

Full and Part Learner Subsidies for Learners aged 19 years and older

Revised April 2011/Version 4

April 2011

Of interest to all providers

Full and Part Learner Subsidies for Learners aged 19 years and older (revised April 2011)

2011/12	Unemployed on active benefits	19-24 year old	Classroom based		Workplace learning Small and Medium Enterprises (SME) Less than 250 employees		Workplace learning Large employer [♠] 250 employees or more	
			25+, without a first Level 2	25+ qualified to Level 2 or above	25+, without a first Level 2	25+ qualified to Level 2 or above	25+, without a first Level 2	25+ qualified to Level 2 or above
Stand alone units	Fully funded	Not funded	Not funded	Not funded	Not funded	Not funded	Not funded	Not funded
Adult Basic Skills (including Functional Skills in Literacy and Numeracy)	Fully funded	Fully funded	Fully funded	Fully funded	Fully funded	Fully funded	Fully funded	Fully funded
ESOL	Fully funded	Co-funded (classroom) Not funded (workplace)	Co-funded	Co-funded	Not funded	Not funded	Not funded	Not funded
Foundation Learning (Entry & Level 1) excluding Skills for Life	Fully funded	Fully funded * (classroom) Fully funded * (vocational Level 1 only, workplace)	Fully funded *	Co-funded	Fully funded * (vocational Level 1 only)	Co-funded (vocational Level 1 only)	Fully funded * (vocational Level 1 only)	Co-funded (vocational Level 1 only)
Full Level 2	Fully funded	Fully funded (for those without a Level 2) Co-funded (with Level 2 or above, classroom) Co-funded (with Level 2 or above, workplace SME only, otherwise not funded in workplace)	Fully funded <i>(co-funded for 24+, from 2012/13)</i>	Co-funded	Fully funded <i>(co-funded for 24+, from 2012/13)</i>	Co-funded	Fully funded <i>(co-funded for 24+, from 2012/13)</i>	Not funded
Other Level 2	Fully funded	Co-funded (classroom) Not funded (workplace)	Co-funded	Co-funded	Not funded	Not funded	Not funded	Not funded

* Fully funded where the learner has not attained Level 2 and learner needs the additional step in order to progress to Level 2, otherwise co-funded

♠ Large employer in the context of eligibility (reduction in funding still applies to employer 1,000 employees or more)

2011/12	Unemployed on active benefits	19-24 year old	Classroom based		Workplace learning Small and Medium Enterprises (SME) Less than 250 employees		Workplace learning Large employer [^] 250 employees or more	
			25+, without a first Level 2	25+ qualified to Level 2 or above	25+, without a first Level 2	25+ qualified to Level 2 or above	25+, without a first Level 2	25+ qualified to Level 2 or above
Full Level 3	Fully funded	Fully funded (for those without a Level 3) Co-funded (with Level 3 or above, classroom) Not funded (with Level 3 or above, workplace)	Fully funded (co-funded for 24+, from 2012/13)	Co-funded	Fully funded (not funded for 24+, from 2012/13)	Not funded	Fully funded (not funded for 24+, from 2012/13)	Not funded
Other Level 3	Fully funded	Co-funded (classroom) Not funded (workplace)	Co-funded	Co-funded	Not funded	Not funded	Not funded	Not funded
Full Level 4	Fully funded	Fully funded (for those without a Level 3) Co-funded (with Level 3 or above, classroom) Not funded (with Level 3 or above, workplace)	Fully funded (co-funded for 24+, from 2012/13)	Co-funded	Fully funded (not funded for 24+, from 2012/13)	Not funded	Fully funded (not funded for 24+, from 2012/13)	Not funded
Apprenticeships (all Levels)	Not funded	Co-funded	Not funded	Not funded	Co-funded	Co-funded	Co-funded	Co-funded

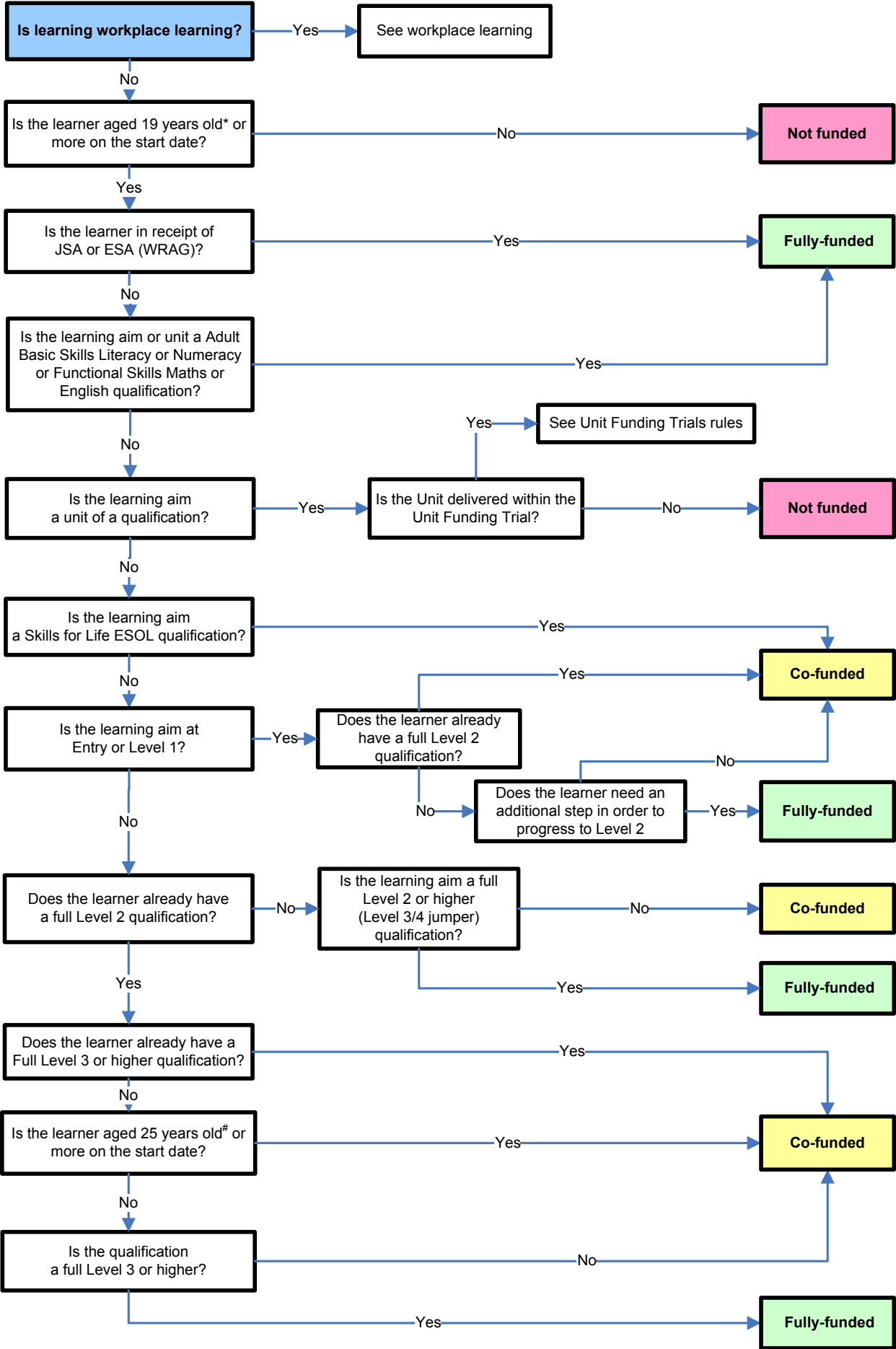
[^] Large employer in the context of eligibility (reduction in funding still applies to employer 1,000 employees or more)

Notes

- Fully funded Entry and Level 1 provision (excluding Skills for Life) is available to learners who have a Level 2 entitlement and learner needs the additional step in order to progress to Level 2, otherwise the provision is co-funded.
- Personal and Social Development aims and Entry Level provision are not available to workplace learning apart from Entry Level Literacy and numeracy.
- Where provision is delivered in the workplace, For example. Apprenticeships, there is an expectation that the employer contributes 50 per cent of the costs
- All Apprenticeship delivery is a mixture of workplace and classroom delivery as specified in the Apprenticeship Framework and cannot be delivered solely in the classroom
- Funding for units of qualifications is also available through the Joint Investment Programme and the Unit Funding Trials for participating colleges and training organisations
- Areas highlighted in **red** are a change from 2010/11
- Areas highlighted in **yellow** are likely to change in 2012/13
- From 2012/13, policies applied to 19-24 year olds in 2011/12, will apply to 19-23 year olds only
- Workplace learning is defined as:
 - a competency aim delivered to employed learner in connection with their occupation or their employers business
 - an Apprenticeship (all levels)
 - Skills for Life aims delivered to an employed learner in their workplace

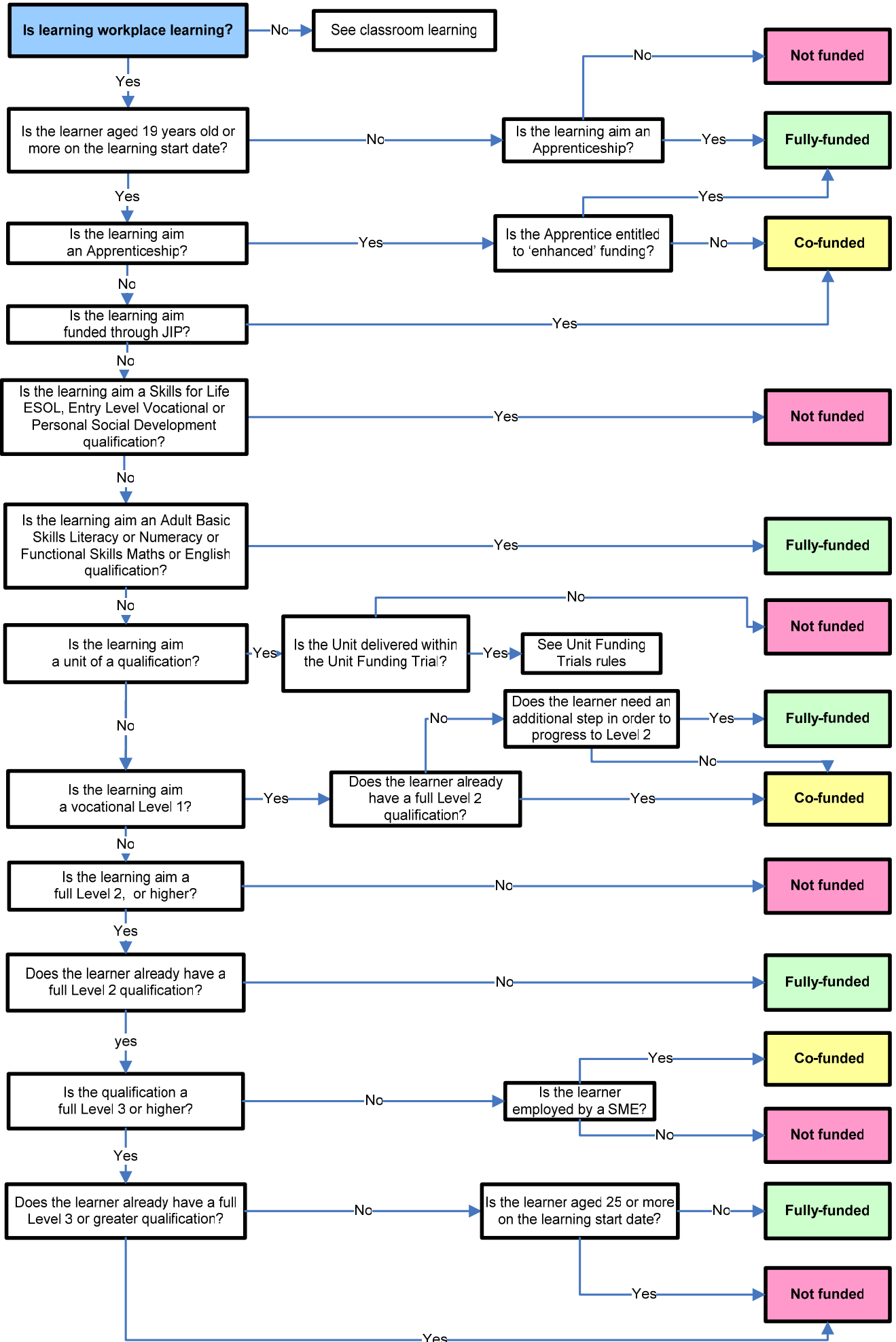
Please note, the table does not reflect the changes to funding eligibility expected in 2013/14, as a result of loans, as this is subject to further consultation. However, it is likely that **all Level 3 and above provision, including Apprenticeships, for those aged 24+** will be funded through loans.

Classroom Learning



* The definition of 19 years of age is based on the learners age as at 31 August in the funding year
 # The definition of 25 years of age is the learner's actual age on the start date of the aim

Workplace Learning



Skills Funding Agency

Cheylesmore House

Quinton Road

Coventry CV1 2WT

T 0845 377 5000

F 024 7682 3675

www.bis.gov.uk/skillsfundingagency



© Skills Funding Agency

Published by the Skills Funding Agency

Extracts from this publication may be reproduced for non-commercial, educational or training purposes on condition that the source is acknowledged and the findings are not misrepresented.

This publication is available in electronic form on the Skills Funding Agency website:

www.bis.gov.uk/skillsfundingagency

If you require this publication in an alternative format or language, please contact the Skills Funding Agency

Help Desk: 081 1 11 11 11 11

11

Skills Funding Agency – P-1100GJ