

**i** For information

**>lsc**

Leading learning and skills

# 16–19 Strategic Analysis for Derby City

**June 2009**

Of interest to Local Authorities and other  
Partners and Stakeholders involved in  
14-19 planning

# 16-19 Strategic Analysis Derby City

15 June 2009

## Table of contents:

<b>Introduction</b> .....	<b>3</b>
<b>Background and issues for consideration</b> .....	<b>5</b>
<b>Part 1 - 16-18 Resident learner participation</b> .....	<b>7</b>
Analysis of participation by learning type 2007/08 .....	7
Further Education (FE) .....	7
Apprenticeships .....	8
School Sixth Forms .....	12
Entry to Employment .....	15
September Guarantee .....	18
Travel to learn patterns .....	19
Further Education .....	19
School Sixth Form .....	21
16-18 Resident Learner Achievement.....	22
FE Achievements .....	22
Apprenticeships Achievement .....	22
School Sixth Forms .....	23
<b>Part 2 - Progress towards PSA targets at 19</b> .....	<b>25</b>
<b>Part 3 - Provision within Derby City</b> .....	<b>28</b>
Further Education providers.....	28
FE Participation .....	28
FE Achievements .....	31
FE Funding.....	32
School Sixth Forms .....	32
School Sixth Form Participation .....	32
School Sixth Form Achievement .....	33
School Sixth Form Funding .....	33
Apprenticeship Providers .....	34
Apprenticeships Participation .....	34
Apprenticeships Achievements .....	37
Apprenticeships Funding .....	39
<b>Part 4 - Area Context</b> .....	<b>40</b>
14-19 Population information .....	40
Employers and Employment in Derby City.....	42
Skills.....	44
Unemployment.....	45
<b>Part 5 - Sub-Regional Group (SRG) overview</b> .....	<b>46</b>

## Introduction

This 16-19 report is the first in a series of three to be published for Local Authorities (LAs) over the next 3 months. The purpose of the reports is to provide, in the Machinery of Government Transition year, sufficient details of 16-19 provision and learners for Local Authorities to be able to:

- a Complement their existing strategic planning for 14-19 in the context of economic and employment information for their area
- b Develop detailed commissioning plans at LA and Strategic Regional Group levels
- c Focus on specific areas for improvement in their planning
- d Understand the provision accessed by their residents
- e Understand the scope and quality of the provision for those learners, wherever they are resident who choose to learn within providers situated within the LA's boundaries.

### **What the Series One report contains.**

Series one report contains sufficient detail of provision accessed by residents to enable points (a), (c) and (d) above. In addition, by its focus on providers it also allows LAs to achieve points (b) and (e) above.

### **Series Two and Three reports**

These reports will provide more detail of specific provision and groups of learners, such as those with Learning Difficulties and/or Disabilities (LDD) and those on Entry to Employment (E2E) programmes. In addition details of the curriculum offered in 16-18 institutions and the characteristics of learners studying those curricula will be provided. It is intended that the series two and three reports will aid LAs in particular in the execution of points (b) and (c) above by increasing their understanding of need and provision. Planned final volumes of learners and funding for 2009/10 for the relevant providers in each Local Authority will also be part of series two reports.

### **Data for the reports**

Where relevant data is published nationally by the Department for Children, Schools and Families, such as that in statistical first reports, or by the Office for National Statistics, this data has been used. Much of the remaining data comes from submissions on the Individual Learner Record (ILR) made by providers to the LSC, from school census data, or from internal LSC systems designed to deal with allocations of funding to providers and measuring targets. Since data comes in at specific times of the year for FE and schools, only whole year data is provided for these types of institutions. This restricts these data sets to 2005/06 to 2007/08. For E2E and Apprenticeships, data arrives monthly, so in-year (2008/09) data is provided in these cases.

In January, 2007, the LSC consulted with the sector on a new funding approach in the document *Delivering World-class Skills in a Demand-led System*. Following this consultation the LSC's funding approach changed significantly for 2008/09. This has had an effect on how the data is collated and aggregated together in

2008/09. Therefore it is urged that when making comparisons across these two years this change is taken into consideration.

**Accessing the reports and information**

The reports will be made available via the LSC's external website. Where information is confidential a separate file will be provided for LAs on disc. From July 2009, an updated data website will be available for LAs.

## Background and issues for consideration

- 1 Employment in Derby City is below regional averages. The level of economic inactivity (22.3%) and unemployment (5.0%) is higher than both that in the region and that in England as a whole.<sup>1</sup> The largest number of employers is to be found in retail, property/business services and construction. Compared to the region as a whole, there are fewer employers in the sectors of transport and public administration. The greatest proportions of employees are to be found in production, health and property/business services. Whilst 14% of the employers in the city are in the retail sector, this sector only employs 9% of the total number of employees. Both of these have seen a reduction since 2008.
- 2 Derby City has a greater proportion of workers employed<sup>2</sup> in the 'Professional Occupations' (14.8%), 'Elementary Occupations' (13.4%) and 'Administration and Secretarial Occupations' (12.9%). The percentage of 'Professional Occupations' and 'Administration and Secretarial Occupations' is above both regional and national averages. There are less people employed as 'Managers' (12.2%) than in East Midlands (15.4%) and England (15.8%).
- 3 In 2007 the levels of qualification in the population<sup>3</sup> in Derby City were below those in the region in general and in England. However, whilst proportions remain below regional and national averages, there have been improvements since 2006. Of the City's population 63% has a Level 2 qualification, 45% a Level 3, and 27% are qualified to Level 4 or above. 21% have qualifications below Level 2 compared to 20% and 19% in East Midlands and England respectively.
- 4 The 14-19 cohort was increasing in Derby City, but has now peaked. Participation in education of 16 and 17 year olds is not a strength in the city. Only 77% were in education and training in 2006 post 16 compared to 82% in England.<sup>4</sup> This proportion has increased by 4% over three years. There are significant differences between participation at 16 and that at 17. Participation fell off 6 percentage points between the ages of 16 and 17 in 2006. This is similar to the national trend.
- 5 Fewer young people choose to learn in School Sixth Forms (SSF) in Derby City than in the region as a whole. A small percentage of those who select school sixth form travel to Derbyshire to study. Participation in both SSF and Apprenticeships has been rising, but during 2009, that in Apprenticeships has fallen off, due largely to the lack of employers offering Apprenticeship places as the economic downturn has begun to bite. Participation in Further Education (FE) showed a small decrease between 2006/07 and 2007/08 but is now increasing again in 2008/09.

---

<sup>1</sup> Annual Population Survey, October 2007-September 2008 downloaded from NOMIS.

<sup>2</sup> Annual Population Survey, July 2007-June 2008 downloaded from NOMIS.

<sup>3</sup> Source: Office of National Statistics - Highest qualification held by population aged 19-59/64

<sup>4</sup> DCSF - Participation in education and WBL of 16 & 17 year olds by LEAs in England

<http://www.dcsf.gov.uk/rsgateway/DB/SFR/s000792/index.shtml>.

- 6 Achievement of Level 2<sup>5</sup> by 16 is in line with England averages. At 64% for Level 2 at 16, Derby City is just below both the England averages (64.8%) but above that of the region (63%). When English and maths are taken into account Derby City (49.3%) is above the both the regional (46.8%) and the England average (47.3%). This is a considerable improvement on the previous year.
- 7 For Level 2 and 3 at 19<sup>6</sup> (PSA Target) the picture is not so strong. Whilst there has been a considerable rise (10.3%) in the proportion of young people who gain a Full Level 2 by 19 over the last five years in the City, which is commensurate with the national change (10.4%), the City is still some 8.9% below England averages. At Level 3, the rate of improvement (8.6%) is better than that nationally (8.2%). However the City is 9.4% below national averages.
- 8 Last year, the quality of provision in FE colleges was rising in Derby City faster than in the rest of the region. However, during 2007/08, the success rate for Levels 2 and 3 were both below regional averages. This is entirely due to a fall in success rates by Derby College.
- 9 For Derby City residents, Advanced Apprenticeship completions<sup>7</sup> rose between 2006/07 (104) and 2007/08 (115). Those in Apprenticeships however, fell from 332 to 267 (-19.6%) over the same period. This is an issue for consideration.

### **Issues for consideration/improvement**

- Participation in education of 16 and 17 year olds need to improve, and the drop out between 16 and 17 needs to change.
- Achievement of Level 2 and Level 3 at 19, although showing improvement over the last five years, needs to improve to be in line with national averages.
- FE success rates at Level 2 and three for 16-18 year olds living in the Local Authority area need improvement.
- The average point score of those learners achieving 'A Level' grades in Derby City is not increasing in line with national or regional changes.
- Apprenticeship Full Framework Completions for Derby City resident learners fell at a much greater rate than those in the region (-19.6% against -7.0%).

---

<sup>5</sup> Source: DCSF School Performance Tables

<sup>6</sup> Source: DCSF – Administrative Data Set 2007/08

<sup>7</sup> Source: Individual Learner Records - WBL AND E2E DRILL DOWNS 2006/07 and 2007/08 (July 2007 and July 2008) Completions data

## Part 1 - 16-18 Resident learner participation

10 This section shows where the young people living within Derby City local authority are learning and highlights any issues relating to demand by residents for learning within the area.

### Analysis of participation by learning type 2007/08

#### Further Education (FE)

**Table 1: East Midlands 16-18 FE learners by LA of residence**

Learner LEA	2006/07 (full year)		2007/08 (full year)		2008/09 (as at March 2009)	
	Learners	% of East Midlands	Learners	% of East Midlands	Learners	% of East Midlands
Derby City	3,401	5.9%	3,575	6.0%	3,406	5.7
Derbyshire	9,644	16.8%	9,708	16.3%	9,746	16.2
Leicester City	6,637	11.5%	6,850	11.5%	7,016	11.7
Leicestershire	6,856	11.9%	7,098	11.9%	6,996	11.6
Lincolnshire	8,144	14.2%	8,400	14.1%	9,011	15.0
Northamptonshire	8,186	14.2%	8,424	14.1%	8,366	13.9
Nottingham City	4,811	8.4%	5,082	8.5%	4,965	8.3
Nottinghamshire	9,336	16.2%	9,702	16.3%	10,136	16.8
Rutland	523	0.9%	562	0.9%	525	0.9
(Unknown based on Postcode)			237	0.4%		
<b>Total East Midlands</b>	<b>57,538</b>	<b>100.0%</b>	<b>59,638</b>	<b>100.0%</b>	<b>60,167</b>	<b>100.0%</b>

Source: 2007/08 ILR F05 returns (FE 0506-0708 Learner Drill down) and 2008/09 ILR F02 return

11 Broadly the 16-18 population resident in Derby city who are engaged in learning in Further Education has remained fairly steady over the last three years. In 2006/07 there were 3,401 learners studying in Further Education. This rose to 3,575 in 2007/08. This was a growth of 5.1 %, which is above the East Midlands figure of 3.6%. In 2007/08, Derby City residents represented 6.0% of all 16-18 year old FE learners within East Midlands.

**Table 2: Derby City 16-18 FE learners by gender**

	Year	Female		Male	
Derby City	2006/07	1,690	49.7%	1,711	50.3%
	2007/08	1,746	48.8%	1,829	51.2%
East Midlands	2006/07	29,226	50.8%	28,312	49.2%
	2007/08	30,217	50.7%	29,421	49.3%

Source: 2007/08 ILR F05 returns (FE 0506-0708 Learner Drill down)

12 Using LSC data returns, the female/male gender split in FE learners in 2006/07 and 2007/08 was 49.7% to 50.3% and 48.8% to 51.2% respectively. This is broadly comparable to the regional averages. The data returns are

comparable with Office of National Statistics (ONS) Mid 2007 Population Estimates which show the 16-18 year old population female/ male split in Derby City was 49.4% to 50.6%.

**Table 3: Derby City 16-18 FE learners by ethnicity**

	Year	Asian		Black		Chinese		Mixed		Other		Unknown		White	
		Count	%	Count	%	Count	%	Count	%	Count	%	Count	%	Count	%
Derby City	2006/07	500	15%	143	4%	8	0%	173	5%	29	1%	32	1%	2,516	74%
	2007/08	474	13%	129	4%	12	0%	209	6%	25	1%	34	1%	2,692	75%
East Midlands	2006/07	4,935	9%	1,769	3%	164	0%	1,781	3%	487	1%	669	1%	47,733	83%
	2007/08	4,973	8%	1,881	3%	174	0%	1,839	3%	471	1%	656	1%	49,644	83%

Source: 2007/08 ILR F05 returns (FE 0506-0708 Learner Drill down)

- 13 LSC data returns show that the white community in Derby City represented 74% and 75% of the population learning in Further Education in 2006/07 and 2007/08 respectively. This is below the East Midlands average of 83%. In 2007/08 the Asian, Mixed and Black communities represented 13%, 6% and 4% of the population.

**Table 4: Derby City 16-18 FE learners by highest level of study**

	Year	Notional Level									
		Entry and Level 1		Level 2		Level 3		Level 4, 5 and Higher		Other (including Mixed)	
Derby City	2006/07	694	20%	1,032	30%	1,672	49%	2	0%	1	0%
	2007/08	859	24%	1,118	31%	1,561	44%	3	0%	34	1%
East Midlands	2006/07	10,785	19%	17,631	31%	28,939	50%	65	0%	118	0%
	2007/08	12,359	21%	17,496	29%	29,556	50%	53	0%	174	0%

Source: 2007/08 ILR F05 returns (FE 0506-0708 Learner Drill down)

- 14 In 2007/08, 44% of 16-18 FE learners resident in Derby City were studying at Level 3. This is below the regional average of 50%. Just under a third of those in learning in FE were studying at Level 2, slightly above the regional average of 29%. The remaining 24% were studying at Entry and Level 1, which is an increase since 2006/07, and above the regional average (21%).

## Apprenticeships

- 15 This section examines the participation of learners living in the Derby City LA area who have undertaken or are undertaking Apprenticeships. The data includes learners who have been funded by East Midlands LSC areas, other LSC areas in England and the National Employer Service. An average of the number of learners undertaking Apprenticeships in a given month over a 12

month period is used to show participation in the 2006/07 and 2007/08 tables.

**Table 5: Resident Learners by LA Level participating on Apprenticeships and proportion within the East Midlands<sup>8</sup>**

Local Authority	2006/07	% of residents as a proportion of East Midlands Apprentices	2007/08	% of residents as a proportion of East Midlands Apprentices
Derby City	832	6.0	843	6.3
Derbyshire	2769	20.1	2657	19.7
Leicester City	519	3.8	477	3.5
Leicestershire	1949	14.1	1899	14.1
Lincolnshire	2128	15.4	2013	14.9
Northamptonshire	2043	14.8	1994	14.8
Nottingham City	755	5.5	774	5.7
Nottinghamshire	2740	19.9	2767	20.5
Rutland	67	0.5	55	0.4
<b>EAST MIDLANDS</b>	<b>13,802</b>	<b>100.0</b>	<b>13,479</b>	<b>100.0</b>

Source: ILR - WBL AND E2E DRILL DOWNS 2006/07 and 2007/08 (July 2007 and July 2008)  
Average in Learning data

**Table 6: 16-18 Apprenticeship Participation by Programme Level, 2006/07 – 2007/08**

Area	Programme Level	2006/07	2007/08	% change 2006/07 - 2007/08
Derby City LA	Apprenticeships	494	506	2.3
	Advanced Apprenticeships	338	337	-0.4
	<b>Total</b>	<b>832</b>	<b>843</b>	<b>1.2</b>
East Midlands	Apprenticeships	8905	8719	-2.1
	Advanced Apprenticeships	4897	4760	-2.8
	<b>Total</b>	<b>13,802</b>	<b>13,479</b>	<b>-2.3</b>

Source: ILR - WBL AND E2E DRILL DOWNS 2006/07 and 2007/08 (July 2007 and July 2008)  
'Average in Learning' data

- 16 Between 2006/07 and 2007/08, there was a slight increase in overall Apprenticeship participation amongst learners resident in Derby City (1.2%) In contrast, participation in the region as a whole decreased (-2.3%).
- 17 More young people were studying an apprenticeship at Level 2 (2.3%) during this period, whilst the region saw a 2.1% decrease.

<sup>8</sup> The data shows an average of learners over a 12 month period undertaking an Apprenticeship

**Table 7: 16-18 Overall Apprenticeship Programme Participation by Gender, 2006/07 – 2007/08**

Area	Gender	2006/07		2007/08	
		Number	%	Number	%
Derby City LA	Female	317	38.1	349	41.5
	Male	515	61.9	493	58.5
	<b>Total</b>	<b>832</b>	<b>100.0</b>	<b>843</b>	<b>100.0</b>
East Midlands	Female	4,958	35.9	4,916	36.5
	Male	8,844	64.1	8,563	63.5
	<b>Total</b>	<b>13,802</b>	<b>100.0</b>	<b>13,479</b>	<b>100.0</b>

Source: ILR - WBL AND E2E DRILL DOWNS 2006/07 and 2007/08 (July 2007 and July 2008)  
'Average in Learning' data

- 18 Compared to the region, there were proportionately more females undertaking Apprenticeships amongst Derby City resident learners in 2006/07 and 2007/08. Between the two years 2006/07 and 2007/08, there has been a growth in the volume of female participation whilst male participation has decreased. This is in line with the regional picture.

**Table 8: 16-18 Overall Apprenticeship Programme Participation by Ethnicity, 2006/07 – 2007/08**

Area	Ethnicity	2006/07		2007/08	
		Number	%	Number	%
Derby City LA	Ethnic Minority	75	9.0	80	9.5
	White	757	91.0	762	90.4
	Not Known	-	-	1	0.1
	<b>Total</b>	<b>832</b>	<b>100.0</b>	<b>843</b>	<b>100.0</b>
East Midlands	Ethnic Minority	420	3.0	472	3.5
	White	13,335	96.6	12,953	96.1
	Not Known	47	0.3	54	0.4
	<b>Total</b>	<b>13,802</b>	<b>100.0</b>	<b>13,479</b>	<b>100.0</b>

Source: ILR - WBL AND E2E DRILL DOWNS 2006/07 and 2007/08 (July 2007 and July 2008)  
'Average in Learning' data

- 19 In 2007/08, 9.5% of those Derby city residents undertaking Apprenticeships were from a minority ethnic background, which is almost three times greater than the proportion at regional level. Like the region there has been a slight increase year on year from 2006/07 to 2007/08.
- 20 Learners on Apprenticeships, as in FE, are asked whether they feel they have a learning difficulty and/or disability and so the numbers shown here and in later tables reflect learners who have self-declared a difficulty or disability.

**Table 9: 16-18 Overall Apprenticeship Programme Participation by Learners with Learning Difficulties and/or Disabilities, 2006/07 – 2007/08**

Local Authority	2006/07				2007/08			
	No Disability/Learning Difficulty	Not Known/Not Provided	Disability / Learning Difficulty Recorded	% with Disability / Learning Difficulty	No Disability / Learning Difficulty	Not Known / Not Provided	Disability / Learning Difficulty Recorded	% with Disability / Learning Difficulty
Derby City LA	793	1	38	4.6%	807	0	36	4.2%
EAST MIDLANDS	12987	53	762	5.5%	12768	65	646	4.8%

Source: ILR - WBL AND E2E DRILL DOWNS 2006/07 and 2007/08 (July 2007 and July 2008)  
'Average in Learning' data

- 21 There has been a marginal decrease in the volume and proportion of learners with a learning disability and/or disability from Derby City undertaking Apprenticeships in 2007/08 since 2006/07. This reflects the reduction in the overall region.

### 2008/09 Data – Period 8 (latest to March 2009)

- 22 Latest information on Apprenticeships is available up to March 2009 in the academic year. The data below provides provisional indications of current participation on the Apprenticeship programme by learners resident in Derby City. Data as at March 2008 for 2007/08 is used to compare the current picture.

**Table 10: 16-18 Apprenticeship Participation, 2008/09**

Area	Programme Level	2007/08 (March 08)	2008/09 (March 09)	2007/8 - 2008/09 Change	
				Number	% Change
Derby City LA	Apprenticeship	495	544	49	9.8
	Advanced Apprenticeship	344	360	16	4.6
	<b>Total</b>	<b>839</b>	<b>903</b>	<b>64</b>	<b>7.7</b>
East Midlands	Apprenticeship	9036	8,577	-459	-5.1
	Advanced Apprenticeship	4990	4,748	-242	-4.9
	<b>Total</b>	<b>14027</b>	<b>13,325</b>	<b>-702</b>	<b>-5.0</b>

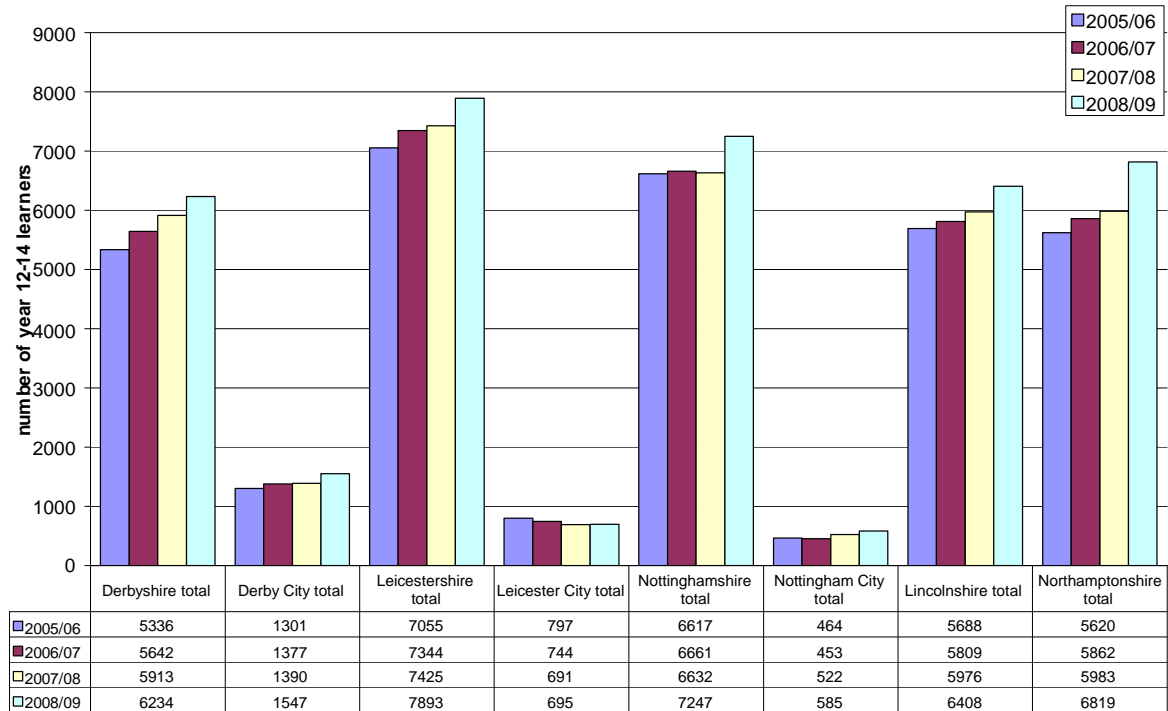
Source: Employer Responsive Drill Downs 2008/09, Period 8 (March 2009), WBL and E2E 2007/08 Period 8 Drill Downs (March 2008)

- 23 Overall, Apprenticeship participation as at the end of March is higher in 2008/09 compared to the same period in 2007/08 amongst learners residing in Derby City (+49 learners, +9.8%). This is in contrast to the region where there has been an overall decrease during the same period. This reflects well on the City and its employers in a time of economic downturn where young people are often the first to find Apprenticeship placements more difficult to access.

## School Sixth Forms

24 This section provides school sixth form participation information in Derby City.

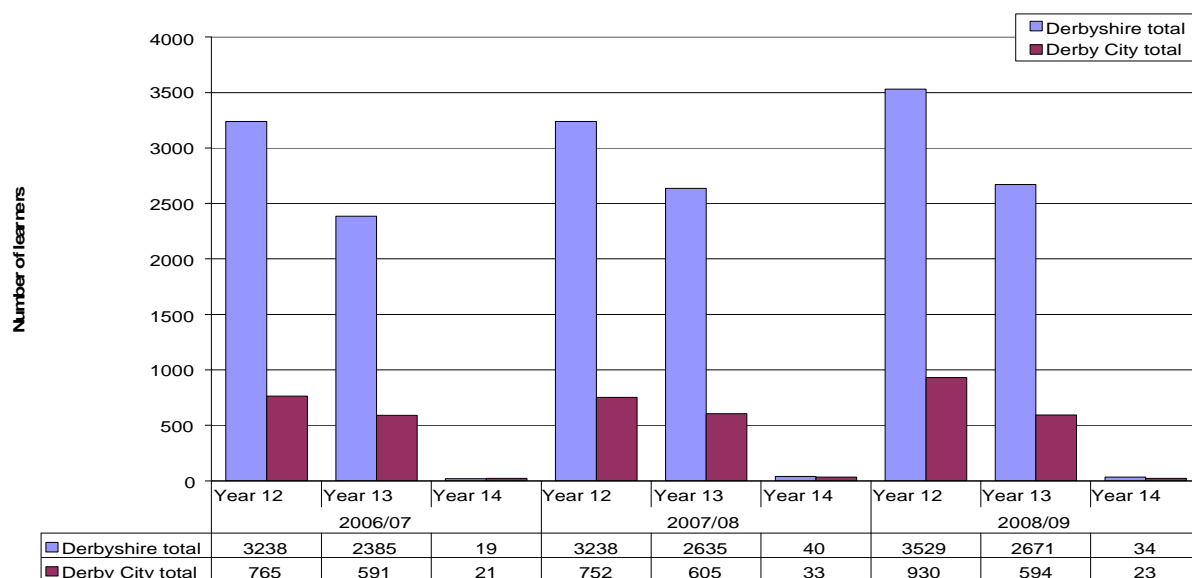
**Figure 1: 16-18 learner numbers in school sixth forms, 2006/07-2008/09**



Source: PLASC, 2006-2008

25 On comparing 2005/06 to 2008/09, there has been an increase of 19% in the Schools Sixth Form population in Derby City.

**Figure 2: Learner numbers in Years 12-14 for Derby City and Derbyshire, 2006/07-2008/09**



26 Similar to previous years, in 2008/09, there was a 36% decrease in learners in the cohort between years twelve and thirteen in Derby City School Sixth Forms. A very small percentage stayed on in learning into year 14.

**Table 11: 16-18 learners attending a Schools Sixth Form funded by the LSC East Midlands: Gender breakdown (% of total group)**

School LA	2007/08 Learners		2008/09 Learners	
	Female %	Male %	Female %	Male %
Derby City	54.5	45.5	54.2	45.8
Leicester City	51.5	48.5	49.4	50.6
Nottingham City	57.3	42.7	56.4	43.6
Nottinghamshire	53.1	46.9	53.3	46.7
Derbyshire	53.4	46.6	53.0	47.0
Leicestershire	52.3	47.7	50.5	49.5
Lincolnshire	53.2	46.8	53.1	46.9
Northamptonshire	53.3	46.7	52.6	47.4
<b>East Midlands</b>	<b>53.1</b>	<b>46.9</b>	<b>52.5</b>	<b>47.5</b>

Source: LSC MI 2007/08 and 2008/09 Schools Sixth Form Analysis

27 The proportion of males and females in school sixth forms in the City has remained static across 2007/08 to 2008/09, with 9% more females than males.

**Table 12: 16-18 learners attending a Schools Sixth Form funded by the LSC East Midlands: Ethnicity breakdown (% of total group)<sup>9</sup>**

LA Area	Year	Any Other	Asian or Asian British	Black or Black British	Chinese	Mixed Heritage	Not Known/Not Provided	White
Derby City	2007/08	0.2	16.0	2.6	1.0	2.5	2.2	75.4
	2008/09	0.7	14.7	2.1	0.8	2.3	1.3	78.1
Leicester City	2007/08	1.0	40.1	5.8	0.0	7.1	0.9	45.1
	2008/09	1.2	38.6	6.4	0.1	5.7	1.9	46.1
Nottingham City	2007/08	0.2	14.5	10.7	1.1	4.5	0.9	68.0
	2008/09	1.0	19.1	8.9	0.5	5.2	0.2	65.1
Nottinghamshire	2007/08	0.4	2.4	0.9	0.6	1.1	0.8	93.9
	2008/09	0.4	2.5	0.8	0.8	1.4	1.4	92.6
Derbyshire	2007/08	0.1	0.9	0.2	0.4	1.2	0.6	96.6
	2008/09	0.2	0.8	0.2	0.3	1.1	0.8	96.5
Leicestershire	2007/08	0.3	12.1	0.5	0.5	2.0	2.0	82.5
	2008/09	0.3	11.8	0.6	0.5	2.2	2.6	82.0
Lincolnshire	2007/08	0.5	1.3	0.6	0.7	1.1	0.9	95.0
	2008/09	0.3	1.1	0.6	0.7	1.1	1.1	95.1
Northamptonshire	2007/08	0.4	4.6	2.3	0.5	2.5	1.5	88.2
	2008/09	0.4	4.6	2.9	0.5	2.7	1.2	87.9
East Midlands	2007/08	0.3	5.9	1.2	0.6	1.8	1.2	89.0
	2008/09	0.4	5.7	1.3	0.6	1.9	1.4	88.7

Source: LSC MI 2007/08 and 2008/09 Schools Sixth Form Analysis

28 Compared to the region as a whole School Sixth Forms in Derby City had a higher proportion of learners from an Asian or Asian British background in 2007/08 and 2008/09 and a commensurably lower white population.

---

<sup>9</sup> Asian or Asian British includes those who are Indian, Pakistani or Bangladeshi or from any other Asian background. Black or Black British includes those with an African or Caribbean heritage or from any other Black background. Mixed heritage includes those who are White and Asian, White and Black African, White and Black Caribbean or from any other Mixed heritage background. White includes those who are White British, White Irish or from any other White background.

**Table 13: 16-18 learners attending a Schools Sixth Form funded by the LSC East Midlands: Special Educational Needs (SEN) (% of total group)**

LA NAME	2007/08 Learners				2008/09 Learners			
	School/ Early Years Action %	School/ Early Years Action + %	Statement %	No SEN %	School/ Early Years Action %	School/ Early Years Action + %	Statement %	No SEN %
Derby City	1.1	0.1	1.0	97.7	4.7	0.7	1.1	93.6
Leicester City	5.6	2.4	0.3	91.7	6.9	3.1	0.7	89.3
Nottingham City	5.6	2.4	0.4	91.5	5.5	2.1	0.3	92.1
Nottinghamshire	4.0	0.5	0.4	95.1	4.8	0.8	0.6	93.8
Derbyshire	1.9	0.8	0.4	96.8	1.5	1.1	0.6	96.9
Leicestershire	1.9	1.0	1.1	96.0	2.4	1.1	1.0	95.5
Lincolnshire	2.5	1.1	0.9	95.4	4.2	1.5	0.9	93.4
Northamptonshire	3.2	0.8	0.8	95.2	5.7	1.2	0.9	92.2
<b>East Midlands</b>	<b>2.8</b>	<b>0.9</b>	<b>0.7</b>	<b>95.6</b>	<b>3.8</b>	<b>1.2</b>	<b>0.8</b>	<b>94.2</b>

Source: LSC MI 2007/08 and 2008/09 Schools Sixth Form Analysis

- 29 Table 13 shows the proportion of 16-18 learners with Special Educational Needs (SEN) attending Schools Sixth Forms across local authority areas in the East Midlands in 2007/8 and 2008/09. The variation in the data is partly a reflection of differing Local Authority policies with regard to learners with Special Educational Needs. Further detailed information about learners with special education needs/learning difficulties and/or disabilities will be provided in the second series report.

### Entry to Employment

- 30 This section provides summary information about learners who have undertaken Entry to Employment (E2E) programmes in 2006/07 and 2007/08.
- 31 More detailed information about the learners in terms of gender, ethnicity and learning difficulties and/or disabilities will be available in the next phase of these reports at the end of June.

**Table 14: E2E trends in Starts, Occupancy\*, and Average Length of Stay 2006/07 – 2007/08: learners living in local authority areas**

2005/06 -2007/08 Summary	2006/07	2007/08	2006/07	2007/08	2006/07	2007/08	2006/07	2007/08
	Starts		Participation (Occupancy)		Total Leavers		Average Stay (weeks)	
DERBY CITY	550	473	196	182	524	431	15.5	16.2
Derbyshire	811	886	286	336	732	804	14.8	16.0
Leicester City	356	401	142	161	337	376	16.3	16.8
Leicestershire	312	380	119	148	318	342	15.1	15.9
Lincolnshire	621	613	272	297	573	553	20.9	19.1
Northamptonshire	711	676	274	287	652	694	17.2	17.9
Nottingham City	314	335	143	178	285	288	21.9	23.5
Nottinghamshire	662	609	323	438	636	552	21.2	24.4
Rutland	7	3	5	7	11	1	22.2	19.3
<b>EAST MIDLANDS</b>	<b>4344</b>	<b>4376</b>	<b>1760</b>	<b>2033</b>	<b>4068</b>	<b>4041</b>	<b>17.8</b>	<b>18.5</b>

Source: ILR - WBL and E2E drill downs 2006/07 – 2007/08. \*Occupancy shows the average number of learners on an E2E programme in one month during a 12 month period.

- 32 Derby City has had a decrease in starts and participation in E2E between 2006/07 and 2007/08. This is in contrast to the overall region picture which has seen an increase.
- 33 However, the average stay in E2E learning (by weeks) has increased marginally during this period. This suggests that the more difficult to reach learners are enrolling on the programme and requiring more support to stay in learning. Nevertheless, the average length of stay in Derby City (16.2 weeks) in 2007/08 was still considerably below that of the region (18.5 weeks). In some part this is due to a high regional average driven up by Nottingham City/Nottinghamshire where the programme provides learning at Level 1 for E2E learners.

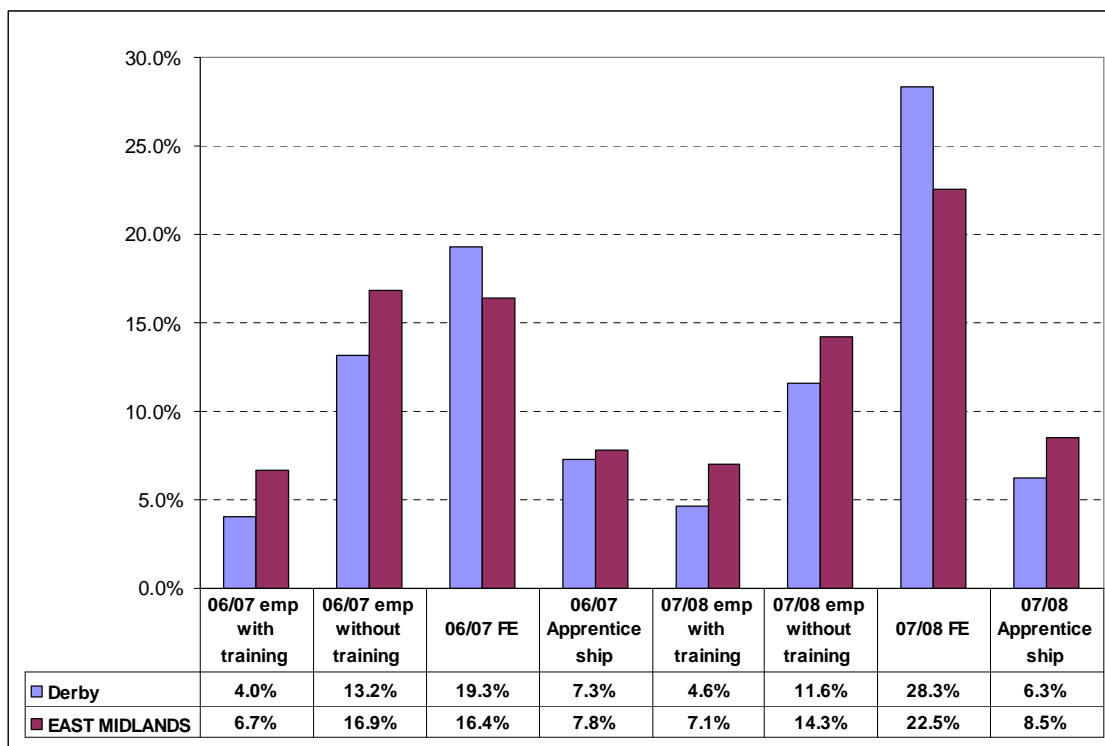
**Table 15: E2E trends in Positive Outcomes: Overall Positive Outcomes, FE and Apprenticeships (App) 2006/07 – 2007/08: learners living in local authority areas**

2006/07 - 2007/08 Summary	Positive outcomes									
	2006/07					2007/08				
	OVERALL	emp with training	emp without training	FE	APP.	OVERALL	emp with training	emp without training	FE	APP.
DERBY CITY	229	21	69	101	38	219	20	50	122	27
Derbyshire	358	39	113	139	67	395	40	108	181	66
Leicester city	162	14	54	49	45	218	16	51	84	67
Leicestershire	162	44	52	44	22	196	27	61	79	29
Lincolnshire	309	77	115	82	35	311	35	120	129	27
Northamptonshire	304	30	137	99	38	350	91	84	126	49
Nottingham City	104	15	29	51	9	124	23	26	58	17
Nottinghamshire	305	32	110	101	62	301	32	76	131	62
Rutland	9	0	7	2	0	1	1	0	0	0
<b>EAST MIDLANDS</b>	<b>1942</b>	<b>272</b>	<b>686</b>	<b>668</b>	<b>316</b>	<b>2115</b>	<b>285</b>	<b>576</b>	<b>910</b>	<b>344</b>

Source: ILR - WBL and E2E drill downs 2006/07 – 2007/08

- 34 A positive outcome from an E2E programme in LSC terms is a learner who progresses to either FE, an Apprenticeship or other employment with training. In LSC terms employment **without** training is not a positive outcome, but for ease of reading the employment without training figures have been included in Table 15 above.
- 35 The number of overall positive outcomes from E2E learning amongst Derby City's residents decreased by 4.4% between 2006/07 and 2007/08. The proportion of Young People progressing into Apprenticeships fell from 17% to 12% over this period, whilst those going into FE rose by 12 percentage points. The proportion of young people leaving the programme to go to a job without training fell by 7 percentage points over this period. In the region the proportion of young people going into Apprenticeships remained static, those going into FE rose by 9 percentage points which was lower than Derby City, and those leaving the programme to go to a job without training fell by 8 percentage points.

**Figure 3: Derby City Learners - E2E trends in Positive Outcomes: Overall Positive Outcomes, FE and Apprenticeships (App) 2006/07 – 2007/08**



Source: ILR - WBL and E2E drill downs 2006/07 – 2007/08

### 2008/09 – Latest position to January 2009

- 36 The table below presents the latest position (to January 2009) on E2E starts by learners living in local authority areas in the region.

**Table 16: 2008/09 latest E2E Learner Starts – Learners Living in the East Midlands (includes provision contracted outside of the region)**

Local Authority Area	2008/09 16-18 E2E Starts - latest to January 2009
Derby City	225
Derbyshire	590
Leicester City	124
Leicestershire	127
Lincolnshire	370
Northamptonshire	341
Nottingham City	202
Nottinghamshire	326
Rutland	4
<b>East Midlands total</b>	<b>2309</b>

Source: ILR - DASH 0809-0809 - E02 - Learner.xls

- 37 More detailed information on the latest picture will be available in the second phase of these reports.

## September Guarantee

**Table 17: September Guarantee status of 16 and 17 year olds in the East Midlands, September 2008**

	Y11 Guarantee				17 year old Guarantee			
	Offer made	Not ready for learning	No offer made	Not recorded	Offer made	Not ready for learning	No offer made	Not recorded
England	94.2%	2.9%	2.7%	0.2%	79.7%	9.6%	7.2%	3.4%
East Midlands	93.4%	5.1%	1.5%	0.0%	78.6%	16.8%	4.6%	0.0%
Derby City	93.0%	5.1%	1.9%	0.0%	78.2%	20.3%	1.5%	0.0%
Derbyshire	89.8%	8.4%	1.8%	0.0%	67.5%	30.7%	1.8%	0.0%
Leicester City	95.3%	3.4%	1.3%	0.0%	87.1%	8.7%	4.2%	0.0%
Leicestershire	95.3%	3.8%	0.8%	0.0%	88.7%	9.4%	1.9%	0.0%
Lincolnshire	94.5%	4.0%	1.5%	0.0%	73.7%	20.7%	5.6%	0.0%
Northamptonshire	92.5%	5.6%	1.9%	0.0%	65.8%	27.8%	6.4%	0.0%
Nottingham City	93.7%	4.1%	2.2%	0.0%	80.0%	13.2%	6.9%	0.0%
Nottinghamshire	93.9%	5.2%	0.9%	0.0%	78.2%	17.7%	4.1%	0.0%
Rutland	95.9%	2.5%	1.7%	0.0%	83.3%	16.7%	0.0%	0.0%

Source: Connexions via Department of Children Schools and Families NCCIS data system

- 38 In September 2008, Derby City achieved offer levels of 93.0% and 78.2% for Year 11 and Year 12 respectively. For the Year 11 guarantee this is 0.4 percentage points (pp) and 1.2 pp below regional and national levels and 7<sup>th</sup> out of 9 LA's within East Midlands. For the Year 12 guarantee this is 0.4 pp and 1.5 pp below regional and national levels and is 5<sup>th</sup> out of 9 LA's within East Midlands.
- 39 For Year 11, of those without an offer, 175 persons were recorded as 'Not ready for formal learning at this time' of which 94 were 'Going into employment without training to NVQ Level 2'. 66 were recorded as 'No offer Made', all due to being 'unable to contact'.

## Travel to learn patterns

### Further Education

- 40 92 per cent of Derby resident 16-18 FE learners were learning at an FE institution within the East Midlands – 82.6 per cent within Derby City institutions. Some 270 residents choose to access FE provision outside of the region. This is usually due to proximity of institutions to the learner's place of residence, or proximity to parental work. In Table 18 below, the small numbers in distant regions – coded in yellow, are accessing provision from an institution whose home region is as indicated. Usually the institution makes local provision available. Learners do not travel to far flung parts of the country.

**Table 18: 16-18 FE learners by LA of residence and region of FE institution, 2007/08**

LA of learner residence	Region of FE institution									Total resident 16-18 learners
	East of England	East Midlands	Greater London	North East	North West	South East	South West	West Midlands	Yorkshire & Humberside	
Derby	4	3,305	3		5	3	4	246	5	3,575
Derbyshire	17	7,921	9	2	879	6	6	617	251	9,708
Leicester	6	6,784	8		10	3	1	32	6	6,850
Leicestershire	13	5,868	7		252	6	15	930	7	7,098
Lincolnshire	461	6,527	78	2	13	20	10	20	1,269	8,400
Northamptonshire	252	7,514	19		68	312	11	235	13	8,424
Nottingham	4	5,052	6		1	2		7	10	5,082
Nottinghamshire	30	9,370	16	2	12	8	13	41	210	9,702
Rutland	10	536			2	3	5	3	3	562
Unknown	7	201	1		8	1		6	13	237

Source: 2007/08 ILR F05 returns (FE 0506-0708 Learner Drill down)

- 41 The majority of Derby resident 16-18 FE learners who learn outside of the East Midlands, go to West Midlands providers to access their learning, primarily Burton College (246 learners)

**Table 19: Derby City and Derbyshire resident learners learning with East Midlands FE providers 2007/08**

LA of provider	Provider Name	Derby City		Derbyshire	
		Learner numbers	%	Learner numbers	%
Derby City	Derby City Council	41	1.1	18	0.2
	Derby College	2,875	80.4	966	10
Derbyshire	Chesterfield College	9	0.3	3,498	36.03
	Derbyshire County Council	3	0.1	282	2.9
	South East Derbyshire College	115	3.2	858	8.8
	Babington Business College Ltd (Derby)			1	0.01
	University of Derby, High Peak College	40	1.1	712	7.3
	Leicester College			5	0.1
Leicester City	Wyggeston and Queen Elizabeth I College			1	0.01
	Brooksby Melton College			1	0.01
Leicestershire	Leicestershire County Council			1	0.01
	Loughborough College	12	0.3	20	0.2
	South Leicestershire College			1	0.01
	Stephenson College	7	0.2	105	1.1
	Boston College			2	0.02
Lincolnshire	Grantham College	2	0.1	1	0.01
	Lincoln College			17	0.2
Northamptonshire	Tresham Institute			2	0.02
Nottingham City	New College, Nottingham	28	0.8	259	2.7
	South Nottingham College	14	0.4	33	0.3
	Castle College, Nottingham	43	1.2	496	5.1
Nottinghamshire	Bilborough College	88	2.5	324	3.3
	North Nottinghamshire College			50	0.5
	West Nottinghamshire College	28	0.8	267	2.8
	Sutton Centre			1	0.01
East Midlands	All providers	3,305	92.4	7,921	81.6

Source: 2007/08 ILR F05 returns (FE 0506-0708 Learner Drill down)

- 42 Only 167 Derby resident learners access their FE learning provision outside the City, some 115 of these at South East Derbyshire College. This is 3% of Derby resident learners, the second highest proportion of Derbyshire 16-18 FE learners at any provider. The highest proportion, 80% of learners, attend Derby College.
- 43 There are other small out flows of learners to other Local Authority areas in the region. The largest is 173 learners from Derby City who travel to institutions in Nottingham City.

## School Sixth Form

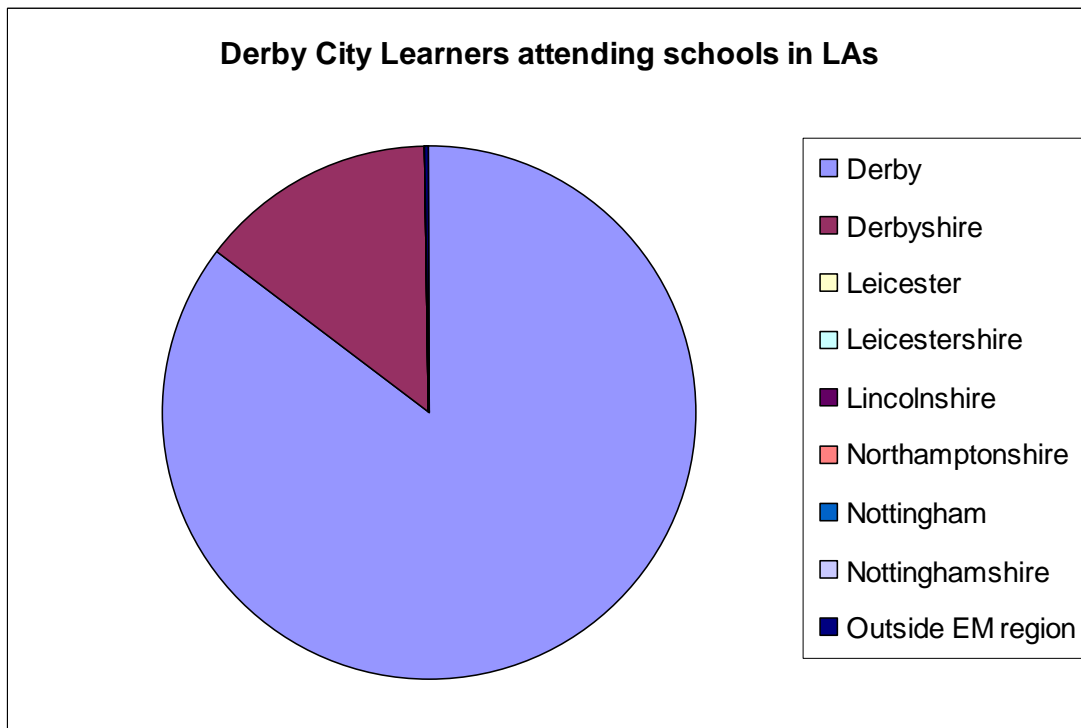
**Table 20: 16-18 School Sixth Form learners by LA of residence, 2008/09**

	Derby City LA		Derbyshire LA	
	Number	%	Number	%
<b>Number of learners resident in LA</b>	<b>1780</b>	100	<b>6558</b>	100
<b>Number of learners travelling to learn in:</b>				
Derby	1518	85.3	299	4.6
Derbyshire	255	14.3	5774	88.0
Leicester	0	0.0	0	0.0
Leicestershire	1	0.1	80	1.2
Lincolnshire	0	0.0	0	0.0
Northamptonshire	0	0.0	1	0.0
Nottingham	2	0.1	13	0.2
Nottinghamshire	1	0.1	190	2.9
Outside EM region	3	0.2	201	3.1

Source: Schools Sixth Form Census 2008/09

- 44 The majority of Schools Sixth Form learners living in Derby City attend a Schools Sixth Form in their locality (85.3%). There were other learners who travelled to Schools Sixth Forms in Derbyshire (255 learners) but there were no other significant outflows to other areas within or outside of the region.

**Figure 4: Schools Sixth Form Learners Travel to Learn patterns, 2008/09**



Source: Schools Sixth Form Census 2008/09

## 16-18 Resident Learner Achievement

### FE Achievements

**Table 21: Aims achieved by learners resident in East Midlands local authorities by level, 2006/07-2007/08**

	2006					2007				
	Full Level 2 aims	% of aims at Full Level 2	Full Level 3 aims	% of aims at Full Level 3	Total aims	Full Level 2 aims	% of aims at Full Level 2	Full Level 3 aims	% of aims at Full Level 3	Total aims
Derby City	465	8.2%	322	5.7%	5,659	516	8.8%	330	5.7%	5,838
Derbyshire	1,643	11.0%	1,205	8.1%	14,956	1,653	10.6%	1,350	8.7%	15,566
Leicestershire	1,014	13.6%	600	8.1%	7,445	1,282	14.6%	973	11.1%	8,804
Leicester City	379	3.4%	120	1.1%	11,263	781	5.5%	403	2.8%	14,153
Northamptonshire	1,220	12.7%	875	9.1%	9,633	1,373	12.7%	1,055	9.8%	10,781
Lincolnshire	1,428	11.6%	960	7.8%	12,327	1,510	11.1%	1,177	8.7%	13,583
Rutland	48	4.8%	45	4.5%	1,006	66	5.1%	66	5.1%	1,303
Nottinghamshire	1,377	9.6%	993	6.9%	14,363	1,661	10.1%	1,190	7.2%	16,484
Nottingham City	602	7.3%	310	3.8%	8,260	634	7.0%	429	4.8%	9,014
East Midlands	8176	9.6%	5,430	6.4%	84,912	9,476	9.9%	6,973	7.3%	95,526

Source: 2007/08 ILR F05 returns (FE 0506-0708 Success rates Drill down)

- 45 Table 21 shows the proportions of curriculum study at different levels taken by Derby City residents. The count is by learning aim. An individual may be studying a range of learning aims at more than one level. So these figures do not equate to learners, but to enrolments at a particular level on a particular course. The count also only relates to those achieving at **Full** Level 2 or 3. There will be a large number of enrolments on courses that are at Level 2 and 3 but where the total of learning aims studied do not amount to a **Full** Level 2 or 3. This explains the relatively low proportions of achievements.

### Apprenticeships Achievement

- 46 Table 22 shows the number of full Apprenticeship Frameworks achieved by Derby City learner residents. In LSC terms, an Apprenticeship is only achieved if the learner leaves with the full framework completed, including all the key skills and technical certificates in that particular framework. Several apprentices achieve only an NVQ, because their employer often does not see the benefit in the learner taking the other elements of the programme. Those learners are not included in the table below.

**Table 22: 16-18 Apprenticeship Framework Completions by Programme Level, 2006/07 – 2007/08**

Year	Programme Level	Derby City	East Midlands
2006/07	Apprenticeship	332	4,777
	Advanced Apprenticeship	104	1,520
	Total	436	6,297
2007/08	Apprenticeship	267	4,443
	Advanced Apprenticeship	115	1,483
	Total	382	5,926
2006/07 - 2007/08 % change	Apprenticeship	-19.6%	<b>-7.0%</b>
	Advanced Apprenticeship	9.5%	<b>-2.4%</b>
	Total	-12.4%	<b>-5.9%</b>

Source: ILR - WBL AND E2E DRILL DOWNS 2006/07 and 2007/08 (July 2007 and July 2008) Completions data

- 47 There has been a reduction in the number of Apprenticeship Frameworks achieved by Derby City resident learners in 2007/08 compared to 2006/07 (-12.4%). This is surprising when the number of young people undertaking an Apprenticeship was basically the same over this period. There was a considerable difference between Levels 2 and 3. Twenty percent fewer young people achieved a full framework in Apprenticeships (Level 2) in 2007/08 than in 2006/07, whereas in Advanced Apprenticeships (Level 3) there was a 10% increase in achievements.
- 48 Derby City compares very favourably with the region in Advanced Apprenticeships. Where the City saw an increase of 10% in achievements of a full framework, the region saw a decrease of 2.4%. The differences in Apprenticeships were however less favourable. The city saw a 20% fall in these compared to a 7% fall in the region. Whilst some of this can be accounted for by a smaller cohort in 2006/07 leading to a smaller potential number of achievements in 2007/08, this is not the full picture and this is an aspect to consider in terms of need for progress.

### School Sixth Forms

- 49 As Table 23 below indicates, there has been a considerable rise in the average point score of those learners achieving A Level grades in Derby City between 2002 and 2006. However, the increase does not compare favourably with either that in the region (30) or nationally (35). Out of the three cities in the region, Derby showed the smallest increase. This is an aspect to consider in terms of need for progress.

**Table 23: Average A-Level point score for candidates and entry by East Midlands local authority**

	Per candidate			Per Entry		
	2002	2006	Difference	2002	2006	Difference
Derby City	237	256.1(r)	19.1	73	77.2(r)	4.2
Derbyshire	265.2	281.8(r)	16.6	75.3	76.9(r)	1.6
Leicester City	211.7	243.4(r)	31.7	67.9	72.8(r)	4.9
Leicestershire	247.8	277.4(r)	29.6	72.9	74.1(r)	1.2
Lincolnshire	275.3	304.6(r)	29.3	76.6	79.1(r)	2.5
Northamptonshire	236.4	268.2(r)	31.8	71.8	75.6(r)	3.8
Nottingham City	222.6	296.2(r)	73.6	70.9	77.1(r)	6.2
Nottinghamshire	234.4	260.3(r)	25.9	69.4	71.4(r)	2
Rutland	..	..(r)	..	..	..(r)	..
East Midlands	245.5	275.8(r)	30.3	72.6	75.4(r)	2.8
England	254.7	289.5(r)	34.8	76	80.2(r)	4.2

Source: DCSF, ([http://www.dcsf.gov.uk/inyourarea/statics/gor\\_E\\_12.shtml](http://www.dcsf.gov.uk/inyourarea/statics/gor_E_12.shtml))

## Part 2 - Progress towards PSA targets at 19

50 The position of learners at age 19 in terms of the PSA target in any local authority is strongly influenced by the achievements in that local authority's schools at 16. These figures are shown in Table 24 below.

**Table 24: GCSE achievements by 15 year old pupils in the East Midlands, 2007/08**

	Number of 15 year old pupils			% achieving 5 A*-C grade GCSEs			% achieving 5 A*-C grades, incl. English and Maths		
	Boys	Girls	Total	Boys	Girls	Total	Boys	Girls	Total
East Midlands	<b>27,381</b>	<b>26,160</b>	<b>53,541</b>	<b>58.4</b>	<b>67.2</b>	<b>62.7</b>	<b>43.2</b>	<b>50.5</b>	<b>46.8</b>
Derby	1,540	1,519	3,059	63.2	63.9	63.6	46.8	51.9	49.3
Derbyshire	4,747	4,614	9,361	57.7	68.1	62.8	44.0	52.4	48.2
Leicester	1,835	1,639	3,474	52.2	58.9	55.3	37.1	42.7	39.7
Leicestershire	3,996	3,707	7,703	59.2	69.8	64.3	48.3	55.3	51.7
Lincolnshire	4,297	4,213	8,510	67.1	74.0	70.5	48.9	55.6	52.2
Northamptonshire	4,321	4,088	8,409	55.0	63.7	59.2	41.1	49.4	45.1
Nottingham	1,444	1,436	2,880	54.5	61.9	58.2	31.6	37.0	34.3
Nottinghamshire	4,963	4,717	9,680	55.5	66.5	60.9	38.9	47.4	43.0
Rutland	238	227	465	69.7	71.8	70.8	58.8	58.6	58.7
England	<b>334,579</b>	<b>319,229</b>	<b>653,808</b>	<b>60.4</b>	<b>69.4</b>	<b>64.8</b>	<b>42.9</b>	<b>51.9</b>	<b>47.3</b>

Source: DCSF, (<http://www.dcsf.gov.uk/rsgateway/DB/SFR/s000826/index.shtml>, Table 18a)

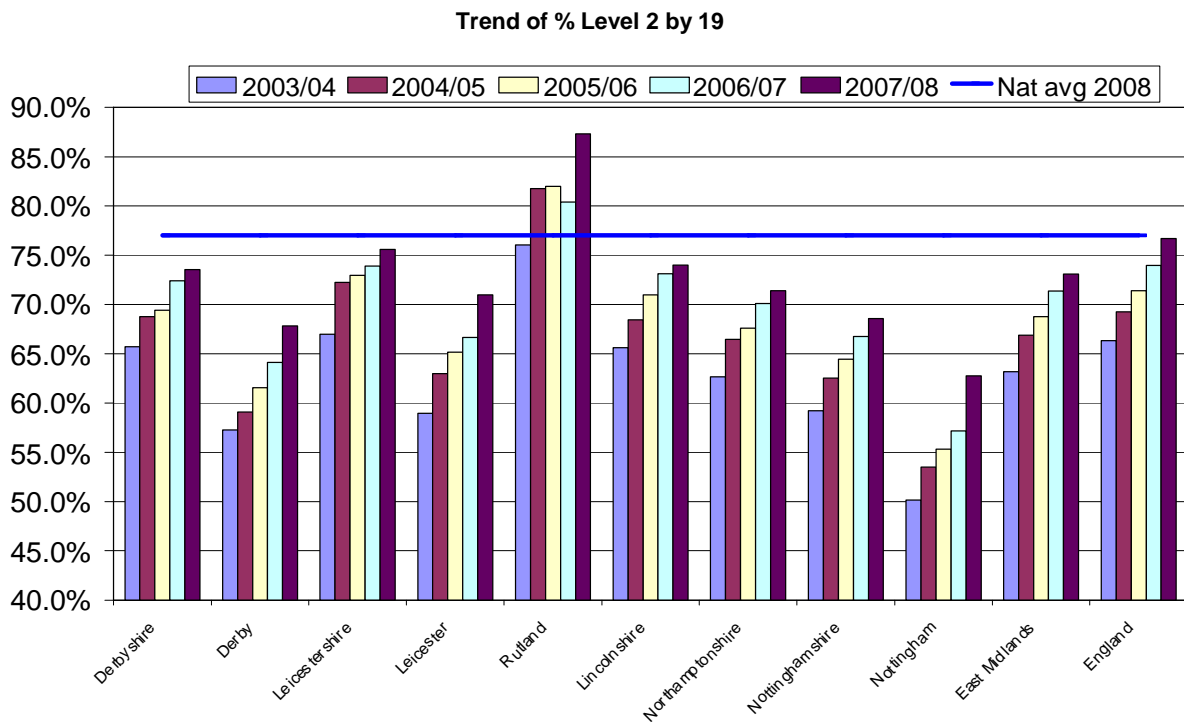
- 51 The proportion of young people in Derby City achieving 5 GCSEs A\*-C (the equivalent of a Level 2) is below the national average (64.8%), but is higher than that in the region (62.7%).
- 52 Achievement by boys remains considerably lower than girls in most areas.
- 53 There has been a considerable rise in the proportion of young people who gain a Full Level 2 by 19 over the last five years in the City. The proportion has risen by 10.3%. This is slightly better than regional averages (10.1%) and almost commensurate with the national change of 10.4%. However, as Figure 5 shows the City is still considerably below the national average.

**Table 25: Progress to PSA target NI 79 – achievement of Level 2 by age 19**

	Aged 19 at the end of 2003/04	Aged 19 at the end of 2004/05	Aged 19 at the end of 2005/06	Aged 19 at the end of 2006/07	Aged 19 at the end of 2007/08	Aged 19 at the end of 2008/09	Aged 19 at the end of 2009/10
<b>LEA Name</b>	<b>by age 19</b>	<b>by age 19</b>	<b>by age 19</b>	<b>by age 19</b>	<b>by age 19</b>	<b>by age 18</b>	<b>by age 17</b>
Derbyshire	65.7%	68.8%	69.4%	72.4%	73.6%	71.7%	65.0%
Derby City	57.3%	59.1%	61.6%	64.1%	67.8%	65.9%	60.3%
Leicestershire	67.0%	72.3%	73.0%	73.9%	75.6%	74.4%	68.4%
Leicester City	58.9%	63.0%	65.2%	66.7%	71.0%	67.6%	63.1%
Rutland	76.0%	81.8%	82.0%	80.4%	87.3%	83.4%	81.3%
Lincolnshire	65.6%	68.4%	71.0%	73.1%	74.0%	73.8%	68.5%
Northamptonshire	62.7%	66.5%	67.6%	70.1%	71.4%	70.8%	62.9%
Nottinghamshire	59.2%	62.5%	64.4%	66.8%	68.6%	66.4%	60.2%
Nottingham City	50.2%	53.5%	55.3%	57.2%	62.8%	59.9%	55.0%
<b>East Midlands</b>	<b>63.2%</b>	<b>66.9%</b>	<b>68.8%</b>	<b>71.4%</b>	<b>73.1%</b>	<b>70.7%</b>	<b>64.3%</b>
<b>England</b>	<b>66.3%</b>	<b>69.2%</b>	<b>71.4%</b>	<b>74.0%</b>	<b>76.7%</b>	<b>74.8%</b>	<b>67.9%</b>

Source: DCSF Website: Level2andlevel3attainmentin each LEAApr2009.xls

**Figure 5: Percentage of young people with a Level 2 by age 19 in the East Midlands**



Source: DCSF Website: Level2andlevel3attainmentin each LEAApr2009.xls

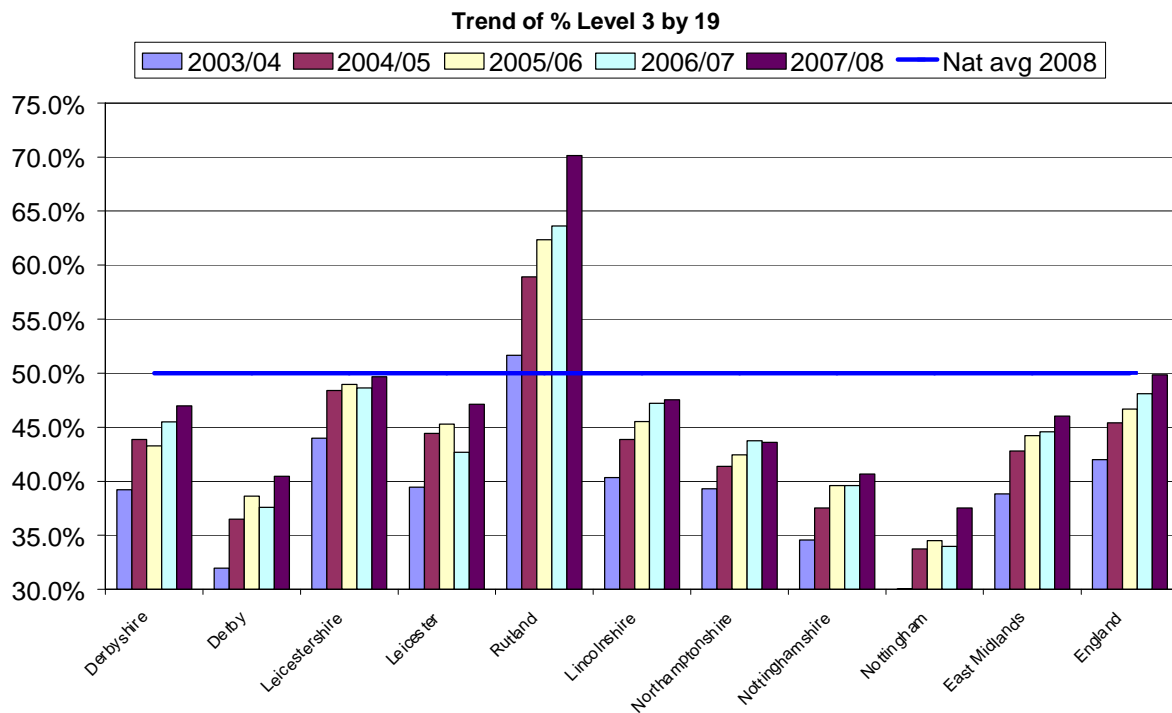
**Table 26: Progress towards PSA target NI 80 – achievement of Level 3 by age 19**

	19 in 2003/04	29 in 2004/05	19 in 2005/06	19 in 2006/07	19 in 2007/08	Aged 19 in 2008/09	Aged 19 in 2009/10
<b>Region</b>	<b>by age 19</b>	<b>by age 19</b>	<b>by age 19</b>	<b>by age 19</b>	<b>by age 19</b>	<b>by age 18</b>	<b>by age 17</b>
Derbyshire	39.2%	43.9%	43.3%	45.5%	47.0%	41.7%	16.8%
Derby	31.9%	36.5%	38.6%	37.6%	40.5%	35.2%	7.5%
Leicestershire	44.0%	48.4%	49.0%	48.6%	49.7%	45.7%	24.0%
Leicester	39.5%	44.4%	45.3%	42.7%	47.1%	37.9%	18.5%
Rutland	51.7%	58.9%	62.4%	63.6%	70.1%	61.2%	13.1%
Lincolnshire	40.3%	43.9%	45.5%	47.2%	47.6%	42.7%	15.8%
Northamptonshire	39.3%	41.4%	42.4%	43.8%	43.6%	40.3%	14.5%
Nottinghamshire	34.6%	37.5%	39.6%	39.6%	40.7%	35.6%	16.1%
Nottingham	30.0%	33.7%	34.5%	34.0%	37.5%	32.7%	12.1%
<b>East Midlands</b>	<b>38.8%</b>	<b>42.8%</b>	<b>44.2%</b>	<b>44.6%</b>	<b>46.0%</b>	<b>40.6%</b>	<b>16.3%</b>
<b>England</b>	<b>42.0%</b>	<b>45.4%</b>	<b>46.7%</b>	<b>48.1%</b>	<b>49.8%</b>	<b>43.4%</b>	<b>16.9%</b>

Source: DCSF Website: Level2andlevel3attainmentin each LEAApr2009.xls

54 There is a similar picture with Level 3 at 19. There has been an 8.6% rise in the proportion of young people who gain a Full Level 3 by 19 over the last five years in the City. This is a better rate of improvement than regional averages (7.2%) and better than the national change of 8.2%. However, as Figure 6 shows, the City is still considerably below the national average.

**Figure 6: Percentage of young people with a Level 3 by age 19 in the East Midlands**



Source: DCSF Website: Level2andlevel3attainmentin each LEAApr2009.xls

## Part 3 - Provision within Derby City

55 This section shows how post-16 providers (excluding those for Apprenticeships) are delivering against their contracts and the quality of their delivery. It is important information for planning the number of commissioned places in 2010/1011, since learning places will need to be planned for all those who choose to learn within the City's institutions.

### Further Education providers

#### FE Participation

56 Eight percent of the region's Further Education learners study within Derby City. Of these, Derby College is responsible for 98% of the provision in FE within the City.

**Table 27: Number of 16-18 FE learners by level for each provider in Derby City, 2006/07-2008/09**

Provider Name	2006/07					2007/08				
	Full Level 2	%	Full Level 3	%	Total Learners	Full Level 2	%	Full Level 3	%	Total Learners
Derby City Council	1	1.4	0	0.0	70	0	0.0	0	0.0	66
Derby College	1,139	26.3	1,166	26.9	4,329	1,091	22.1	1,473	29.8	4,946
Derby City LA Total	1,140	25.9	1,166	26.5	4,399	1,091	21.8	1,473	29.4	5,012
East Midlands Total	12,662	23.7	18,559	34.7	53,446	12,724	22.6	20,188	35.9	56,249

Provider Name	2008/09				
	Full Level 2	%	Full Level 3	%	Total Learners
Derby City Council	0	0.0	0	0.0	124
Derby College	938	23.1	1,707	42.1	4,052
Derby City LA Total	938	22.5	1,707	40.9	4,176
East Midlands Total	12,951	23.1	21,755	38.9	55,980

Sources: FE Learners Full Level 2 and Full Level 3 Drill Down 2005-06 - 2007/08 and 08/09 data - Dashboard 0809-0809 - LR FE - Learner.xls

NB: Total Learners also includes learners who are not undertaking L2/L3 qualifications

57 There was a fall in the proportion of young people studying at Level 2 in FE colleges between 2006/07 and 2007/08, although this has increased slightly in 2008/09 ( year to date figures). Given that the City is below regional and national averages for achievement of Level 2 by 19 (the PSA Target), and that achievement of Level 2 by 16 is also below national and regional averages, this is an area for improvement in the future.

58 By contrast, the proportion of young people taking a Level 3 within the FE system has improved considerably since 2006. There has been a 14.4% increase in this proportion over this time scale. However the 2008/0-9 figures are not final end of year totals and must be viewed with some caution.

**Table 28: Number of 16-18 FE learners by provider in Derby City with a learning difficulty and/or disability (LLDD), 2007/08**

LA	Provider	LLDD	
Derby City	Learner numbers	No.	% of LLDD with each Provider
	Derby City Council	18	27.3
	Derby College	1,280	25.6
<b>Derby City Total</b>		1298	25.6

Source: 2007/08 ILR F05 returns (FE 0506-0708 Learner Drill down)

59 Of the two FE providers in Derby City area, Derby City Council had a higher proportion of learners with learning difficulties and/or disabilities in 2007/08. However, the actual numbers for the city council are very small. By far the greater number of learners choose to attend Derby College.

**Table 29: Numbers of East Midlands 16-18 FE learners by their district of residence by provider in Derby City, 2007/08**

LA of provider		Derby City	Derbyshire	Leicester City	Leicestershire	Lincolnshire	Northamptonshire	Nottingham City	Nottinghamshire	Rutland	blank	Total East Midlands learners	Learners from outside of East Midlands	Full Total of learners
	Derby City Council	41	18						1			60	6	66
	Derby College	2,874	970	26	60	69	6	32	111		11	4,159	787	4,946
Derby City Total		2915	988	26	60	69	6	32	112		11	4219	793	5012

Source: 2007/08 ILR F05 returns (FE 0506-0708 Learner Drill down)

60 In terms of planning places for learning and learners within the City's providers, whilst by far the greatest proportion (58.2%) come from within the city itself, on 2007/08 figures, the Local Authority will need to ensure there are places available for learners from Derbyshire (19.7%), Nottinghamshire (2.2%) and for small numbers of learners from other local authorities, the majority of whom choose to study at Derby College. It is likely that these

choices are made on the basis of curriculum availability as well as travel patterns. More detail on this issue will be provided in the curriculum update of these reports.

**Table 30: Percentage of East Midlands 16-18 FE learners by their district of residence by provider in Derby City, 2007/08**

LA of provider		Derby City	Derbysire	Leicester City	Leicestershire	Lincolnshire	Northamptonshire	Nottingham City	Nottinghamshire	Rutland	blank	Total East Midlands learners	Learners from outside of East Midlands	Full Total of learners
	Derby City Council	62.1	27.3									90.9	9.1	100
	Derby College	58.1	19.6	0.5	1.2	1.4	0.1	0.6	2.2		0.2	84.1	15.9	100
Derby City provider total		58.2	19.7	0.5	1.2	1.4	0.1	0.6	2.2		0.2	84.2	15.8	100

Source: 2007/08 ILR F05 returns (FE 0506-0708 Learner Drill down)

**Table 31: Numbers of 16-18 FE learners by region of residence for providers in Derby City 2007/08**

	Derby City Council		Derby College		Derby City area provider total	
	Number	%	Number	%	Number	%
East of England			29	0.6	29	0.6
East Midlands	60	90.9	4159	84.1	4219	84.2
Greater London			13	0.3	13	0.3
North East			54	1.1	54	1.1
North West			47	1.0	47	0.9
South East			36	0.7	36	0.7
South West			24	0.5	24	0.5
West Midlands	6	9.1	511	10.3	517	10.3
Yorkshire & Humber			64	1.3	64	1.3
Unknown			9	0.2	9	
<b>Total learners</b>	<b>66</b>	<b>100</b>	<b>4946</b>	<b>100</b>	<b>5012</b>	<b>100</b>

Source: 2007/08 ILR F05 returns (FE 0506-0708 Learner Drill down)

## FE Achievements

- 61 Over the last two years, the major FE provider Derby College has made no improvement in its success rates at Level 2 and remains considerably below regional averages. For 2007/08 its position below regional averages worsened. This reflects the smaller proportion of learners studying at Level 2 in the previous year. However, this is still a matter for discussion.
- 62 The picture is similar when the Level 3 position is examined. In 2006/07 Derby college was 6.7% above regional averages at Level 3. In 2007/08 the college's success rates at Level 3 had fallen by 1.2% whilst that in the region had improved by 9.7%. Considering that Derby College is the major FE provider, their figures will need some discussion.

**Table 32: Success rates of Derby City FE providers 2006/07**

	2006/07					
	Full Level 2		Full Level 3		Total	
	Achievements	Success rate	Achievements	Success rate	Achievements	Success rate
Derby City Council	1	100.0%			47	67.1%
Derby College	646	68.8%	373	71.0%	6,534	77.0%
<b>East Midlands average</b>	7,587	69.6%	4,905	64.3%	79,184	75.8%

Source: ILR - EM-FE Success Rates-Detail- 0506-0708.xls

**Table 33: Success rates of Derby City FE providers 2007/08**

	2007/08					
	Full Level 2		Full Level 3		Total	
	Achievements	Success rate	Achievements	Success rate	Achievements	Success rate
Derby City Council					58	80.6%
Derby College	710	68.7%	377	68.8%	7,107	77.2%
<b>East Midlands average</b>	9,050	74.0%	6,638	74.0%	90,116	78.9%

Source: ILR - EM-FE Success Rates-Detail- 0506-0708.xls

## FE Funding

63 In 2008/09, the LSC introduced its new Demand Led Funding methodology and this was applied to the allocations process for funding FE provision in that year. For this reason, direct comparisons are not possible between 2007/08 funding levels and those in 2008/09. Further information about the Demand Led Funding methodology is available via the LSC web site (<http://www.lsc.gov.uk/providers/funding-policy/demand-led-funding/>).

**Table 34: Changes to Funding for 16-18 FE: Derby City**

Provider	2006/07		2007/08		*2008/09
	£	% change from previous year	£	% change from previous year	16-18
Derby City Council	£37,024	-23.30%	£30,610	-17.30%	
Derby College	£16,429,859	12.30%	£18,724,580	14.00%	£18,633,495
Total 16-18 funding in FE for Derby City	£16,466,883	12.10%	£18,755,189	13.90%	£18,633,495

Source: 2007/08 ILR F05 returns (FE 0506-0708 Learner Drill down) & \*2008/09 Funding Allocation

64 16-18 funding in FE for Derby City has increased over the last three years in the order of 12% on average. This has largely been related to increases for Derby College and in particular to changes from part time to full-time provision. Funding for the City Council has fallen year on year, reflecting the changing nature of 16-18 provision and a move by young people to increasing full-time participation.

## School Sixth Forms

### School Sixth Form Participation

**Table 35 - Numbers of Year 12-14 students in Derby City School Sixth Forms, 2005/06-2008/09**

	2005/06	2006/07	2007/08	2008/09
Bemrose Community School	0	0	47	36
Chellaston School	278	317	301	340
Derby Moor Community Sports College	83	69	74	90
Lees Brook Community Sports College	0	0	0	66
Littleover Community School	251	260	238	230
Merrill College	90	121	150	168
Noel-Baker Community School and Language College	150	145	129	148
Saint Benedict Catholic School and Performing Arts College	282	281	274	283
Woodlands Community School	167	184	177	186

Source: School Sixth Form Census Data

## School Sixth Form Achievement

65 Overall the City's average 'A'-Level point score per student has increased over the last three years in a steady fashion, but both the LA average and the LSC averages remain below that of the national figures. The LSC average is boosted by the inclusion of Derby College, where, although its success rates remain below regional averages at Level 3, its average point score per student is within the bottom third of the City's range.

**Table 36: A Level point scores per candidate and per entry by provider in Derby City, 2006-2008<sup>10</sup>**

	Average point score per student			Average point score per examination entry		
	2006	2007	2008	2006	2007	2008
<b>Local Authority Average</b>	<b>647.3</b>	<b>662.5</b>	<b>697.1</b>	<b>203.4</b>	<b>201.6</b>	<b>204.8</b>
<b>LSC Average</b>	<b>697.2</b>	<b>718.2</b>	<b>737.3</b>	<b>202.1</b>	<b>202.4</b>	<b>204.1</b>
<b>England Average</b>	<b>721.5</b>	<b>731.2</b>	<b>740</b>	<b>206.2</b>	<b>207.5</b>	<b>209.4</b>
Bemrose School	<a href="#">N/A</a>	<a href="#">N/A</a>	267.5	<a href="#">N/A</a>	<a href="#">N/A</a>	91.7
Chellaston School	727.6	678.2	771	219.8	210	221.3
<a href="#">Derby College</a>	586.4	636.1	683.6	198.9	195.9	204.1
Derby Grammar School	737.1	861.7	906.7	218.4	225.1	238.8
Derby High School	1037.9	1037.9	1044.5	234.9	232.9	245
Derby Moor Community Sports College	724.8	792.4	826.8	206.4	219.9	213
Landau Forte College	<a href="#">N/A</a>	773.3	743.2	<a href="#">N/A</a>	206.6	210.9
Littleover Community School	752.7	843.7	836.5	208.6	221.1	218.4
Merrill College	422.9	326.9	485	174.1	159.3	171.2
Noel-Baker Community School and Language College	452.1	476.6	422.3	162.7	175.7	169.9
Saint Benedict Catholic School and Performing Arts College	591.8	585.2	599.2	198.7	195.4	177.5
Woodlands School	709.4	701.7	751.6	216	210.4	215.5
<a href="#">The Millennium Centre</a>	745.4	832	834.4	208.1	220.8	217.2

Source: DCSF, (<http://www.dcsf.gov.uk/performance/tables/>).

## School Sixth Form Funding

66 Only 2008/09 funding information is available at this time. More detail, including 2009/10 funding allocations figures will be available in the next phase of the reports.

<sup>10</sup> Derby College scores are included here for ease of reference

**Table 37 - 2008/09 School Sixth Form funding in Derby City**

	2008/09
Provider	£
Bemrose Community School	£207,706
Derby Moor Community Sports College	£345,329
Lees Brook Community Sports College	£346,177
Littleover Community School	£1,198,272
Saint Benedict Catholic School and Performing Arts College	£1,290,102
Chellaston School	£1,466,327
Merrill College	£771,686
Noel Baker Community School and Language College	£575,491
Woodlands Community School	£802,208
<b>Derby City total</b>	<b>£7,003,298</b>

Source: 2008/09 LSC School Sixth Form funding allocations

## **Apprenticeship Providers**

### **Apprenticeships Participation**

67 This section provides information on the number of learners participating on Apprenticeships within the Derbyshire LSC area and the Providers funded to deliver that learning. The data presents detailed information about those Providers that are funded by Derbyshire LSC. However, some of these Providers may not *deliver* the learning in the Derbyshire area and due to the complexities in how this data is constructed it is not possible at this stage to provide a breakdown of the delivery location of each Provider for individual learners.

**Table 38: Number of 16-18 learners undertaking Apprenticeships with Providers funded by Derbyshire LSC, 2007/08**

Providers	2007/08				Total
	Apprenticeship		Advanced Apprenticeship		
	No.	%	No.	%	
Academy Of Hair & Beauty Limited	55	3.1	3	0.3	57
Access Training (East Midlands) Ltd	14	0.8	7	0.9	21
Acorn Training Consultants Limited	13	0.8	9	1.1	23
Babington Business College Limited	94	5.4	20	2.5	114
Burton College	89	5.1	61	7.7	151
Carter & Carter Group Plc	8	0.4	0	0.0	8
Chesterfield College	174		61		234
Dart Limited	0		0		0
Dales Agriculture & Rural Training Limited	63	3.6	13	1.7	77
Derby College	338	19.3	84	10.5	421
Derbyshire And Nottinghamshire Chamber Of Commerce And Industry	98	5.6	41	5.1	138
Heart Of England Training Limited	0	0.0	0	0.0	0
JHP Group Limited	43	2.5	10	1.2	53
Kaplan Financial Limited	0	0.0	0	0.0	0
Mark Bremner	5	0.3	1	0.1	6
Millbrook Management Services Limited	29	1.7	9	1.1	38
National Council On Ageing	63	3.6	11	1.4	74
NLT Training Services Limited	60	3.4	93	11.7	153
Protocol Skills Limited	36	2.0	3	0.3	38
Rathbone Training	39	2.2	0	0.0	39
Rolls-Royce Plc	0	0.0	213	26.9	213
Sheffield Trainers Limited	184	10.5	29	3.6	213
South East Derbyshire College	65	3.7	5	0.6	70
Stephenson College	2	0.1	0	0.0	2
Stubbing Court Training Limited	26	1.5	13	1.6	39
Tamworth And Lichfield College	3	0.2	0	0.0	3
TBG Learning Ltd	24	1.4	7	0.9	31
Training Services 2000 Ltd	60	3.4	50	6.4	110
Triangle Training Ltd	20	1.2	1	0.1	21
University Of Derby	69	3.9	26	3.3	95
VT Training Plc	33	1.9	15	1.8	48
Webs Training Limited	46	2.6	10	1.3	56
<b>Derbyshire LSC totals</b>	<b>1751</b>	<b>100.0</b>	<b>793</b>	<b>100.0</b>	<b>2544</b>

NB: The data shows an average of learners undertaking an Apprenticeship in a given month over a 12 month period. Source: ILR - WBL and E2E 2007/08 Drill Downs, 'In Learning' Data

**Table 39: Number of 16-18 learners undertaking Apprenticeships with Providers funded by Derbyshire LSC, 2008/09**

Providers	2008/09				
	Apprenticeship		Advanced Apprenticeship		Total
	No.	%	No.	%	
Academy Of Hair & Beauty Limited	54	3.3	5	0.6	59
Access Training (East Midlands) Ltd	15	0.9	3	0.4	18
Acorn Training Consultants Limited	10	0.6	5	0.5	15
Babington Business College Limited	79	4.8	24	2.9	103
Burton College	87	5.3	66	7.8	152
Carter & Carter Group Plc		0.0		0.0	
Chesterfield College	160	9.8	43	5.1	203
Dart Limited	53	3.3	13	1.6	67
Dales Agriculture & Rural Training Limited		0.0		0.0	
Derby College	310	18.9	109	12.9	419
Derbyshire And Nottinghamshire Chamber Of Commerce And Industry	92	5.6	42	4.9	134
Heart Of England Training Limited		0.0		0.0	
JHP Group Limited	38	2.3	17	2.0	56
Kaplan Financial Limited	1	0.0	1	0.1	2
Mark Bremner	13	0.8	6	0.7	19
Millbrook Management Services Limited	29	1.8	2	0.3	31
National Council On Ageing	75	4.6	15	1.8	90
NLT Training Services Limited	67	4.1	107	12.7	175
Protocol Skills Limited	23	1.4	2	0.2	25
Rathbone Training		0.0		0.0	
Rolls-Royce Plc	0	0.0	251	29.8	251
Sheffield Trainers Limited	178	10.9	17	2.0	195
South East Derbyshire College	36	2.2	6	0.7	42
Stephenson College	1	0.1	0	0.0	1
Stubbing Court Training Limited	35	2.1	12	1.4	46
Tamworth And Lichfield College	11	0.6	0	0.0	11
TBG Learning Ltd	18	1.1	2	0.2	20
Training Services 2000 Ltd	63	3.9	52	6.2	115
Triangle Training Ltd	71	4.3	4	0.5	75
University Of Derby	75	4.6	32	3.8	108
VT Training Plc		0.0		0.0	
Webs Training Limited	46	2.8	6	0.7	52
<b>Derbyshire LSC totals</b>	<b>1638</b>	<b>100.0</b>	<b>842</b>	<b>100.0</b>	<b>2480</b>

*NB: The data shows an average of learners undertaking an Apprenticeship in a given month over a 12 month period. Source: ILR - Employer Responsive Drill Downs 2008/09, Period 8 (March 2009),*

68 Derby College, Rolls-Royce Plc, Burton College, Sheffield Trainers Limited, NLT Training Services Limited, Training Services 2000 Ltd, Babington Business College Limited, and the University of Derby were amongst some of the largest Providers delivering Apprenticeships funded by Derbyshire LSC. Compared with March in 2008, there has been a decrease in participation in 16-18 Apprenticeships, reflecting the difficult economic conditions and the lack of availability of available employment in the City for Apprentices of this age group.

69 The table below provides a breakdown of Providers funded by Derbyshire LSC in 2007/08 that had learners with learning difficulties and/or disabilities undertaking Apprenticeships. The largest providers (those with >5% of their learners having LDD) are shaded in yellow. In 2007/08 some 5% of Apprentices were identified as having Learning Difficulties/Disabilities.

**Table 40: Number of 16-18 Apprenticeship learners with a learning difficulty and/or disability (LLDD), by Providers funded by Derbyshire LSC, 2007/08**

Provider	2007/08	
	No.	%
Academy Of Hair & Beauty Limited	0	0.0
Access Training (East Midlands) Ltd	4	3.3
Acorn Training Consultants Limited	4	3.3
Babington Business College Limited	7	4.9
Burton College	7	4.8
Carter & Carter Group Plc	1	1.0
Chesterfield College	1	0.7
Dales Agriculture & Rural Training Limited	9	6.8
Derby College	10	7.6
Derbyshire And Nottinghamshire Chamber Of Commerce And Industry	2	1.6
Heart Of England Training Limited	0	0.0
JHP Group Limited	4	3.2
Kaplan Financial Limited	0	0.0
Mark Bremner	1	0.6
Millbrook Management Services Limited	8	5.7
National Council On Ageing	6	4.7
NLT Training Services Limited	1	0.9
Protocol Skills Limited	1	0.4
Rathbone Training	4	3.2
Rolls-Royce Plc	21	15.6
Sheffield Trainers Limited	5	3.5
South East Derbyshire College	0	0.0
Stephenson College	0	0.0
Stubbing Court Training Limited	4	3.2
Tamworth And Lichfield College	0	0.0
TBG Learning Ltd	0	0.0
Training Services 2000 Ltd	15	11.1
Triangle Training Ltd	2	1.5
University Of Derby	8	5.6
VT Training Plc	3	2.1
Webs Training Limited	6	4.7
Derbyshire Total	134	100.0

*NB: The data shows an average of learners undertaking an Apprenticeship in a given month over a 12 month period. Source: Source: WBL and E2E 2007/08 Drill Downs, 'In Learning' Data*

### Apprenticeships Achievements

70 Table 41 presents overall 2007/08 success rates for Apprenticeship delivery by Providers funded by Derbyshire LSC. 72% of the Apprenticeship providers who deliver within Derbyshire have overall success rates above the regional average. These are highlighted in yellow in the table below. Notable

exceptions are Burton College and Derby College, although in the case of the latter this is due to performance in Advanced Apprenticeships. There are a variety of reasons for this, much of which can be attributed to the fact that these figures only reflect the achievement of the full framework. Many learners, with the support of their employer may have chosen only to complete NVQs rather than the full framework.

**Table 41: 2007/08 Apprenticeship Framework Overall Success Rates, Providers funded by Derbyshire LSC**

Provider	Apprenticeships		Advanced Apprenticeships		Overall	
	Frame-works	Overall Success rate	Frame-works	Overall Success rate	Frame-works	Overall Success rate
Academy Of Hair & Beauty Limited	16	62%	4	100%	20	67%
Access Training (East Midlands) Ltd	9	82%	2	50%	11	73%
Acorn Training Consultants Limited	13	87%	7	88%	20	87%
Babington Business College Limited	92	92%	20	87%	112	91%
Burton College	24	49%	17	61%	41	53%
Chesterfield College	99	64%	46	68%	145	65%
Dales Agriculture & Rural Training Limited	35	80%	1	50%	36	78%
Derby College	110	65%	32	56%	142	63%
Derbyshire and Nottinghamshire Chamber Of Commerce And Industry	59	74%	23	70%	82	73%
JHP Group Limited	15	52%	0	0%	15	50%
Millbrook Management Services Limited	22	79%	6	100%	28	82%
National Council On Ageing	36	56%	1	50%	37	56%
NLT Training Services Limited	38	63%	3	60%	41	63%
Omnia Training Limited	1	100%	-	-	1	100%
Protocol Skills Limited	34	69%	0	0%	34	68%
Rathbone Training	27	54%	-	-	27	54%
Rolls-Royce Plc	-	-	33	87%	33	87%
Sheffield Trainers Limited	134	61%	24	65%	158	62%
South East Derbyshire College	30	77%	4	33%	34	67%
Stubbing Court Training Limited	18	72%	3	50%	21	68%
TBG Learning Ltd	17	63%	4	36%	21	55%
Training Services 2000 Ltd	51	94%	25	93%	76	94%
University Of Derby	26	58%	8	67%	34	60%
Webs Training Limited	20	80%	4	67%	24	77%
VT Training Plc	21	54%	5	71%	26	57%
<b>Derbyshire Total</b>	<b>947</b>	<b>68%</b>	<b>272</b>	<b>68%</b>	<b>1,219</b>	<b>68%</b>
<b>East Midlands Total</b>	<b>3,781</b>	<b>64%</b>	<b>952</b>	<b>66%</b>	<b>4,733</b>	<b>65%</b>

Source: ILR - WBL New Measures of Success Rates Drill Downs 2007/08

- 71 Derbyshire LSC's overall success rate in 2007/08 was above the regional average (68% compared to 65%).
- 72 Of those Providers with a higher volume of successful Framework completions, the following had good success rates which were above the local and regional average: Training Services 2000 Ltd (94%); Babington Business College Limited (91%); Dales Agriculture & Rural Training Limited (78%) Derbyshire and Nottinghamshire Chamber of Commerce and Industry (73%) Rolls Royce Plc (87%) and Protocol Skills Ltd (68%).

## Apprenticeships Funding

73 Only 2008/09 funding information is available at this time. More detail, including 2009/10 funding allocations figures will be available in the next phase of the reports.

**Table 42 - 2008/09 Apprenticeship funding in Derbyshire LSC Area**

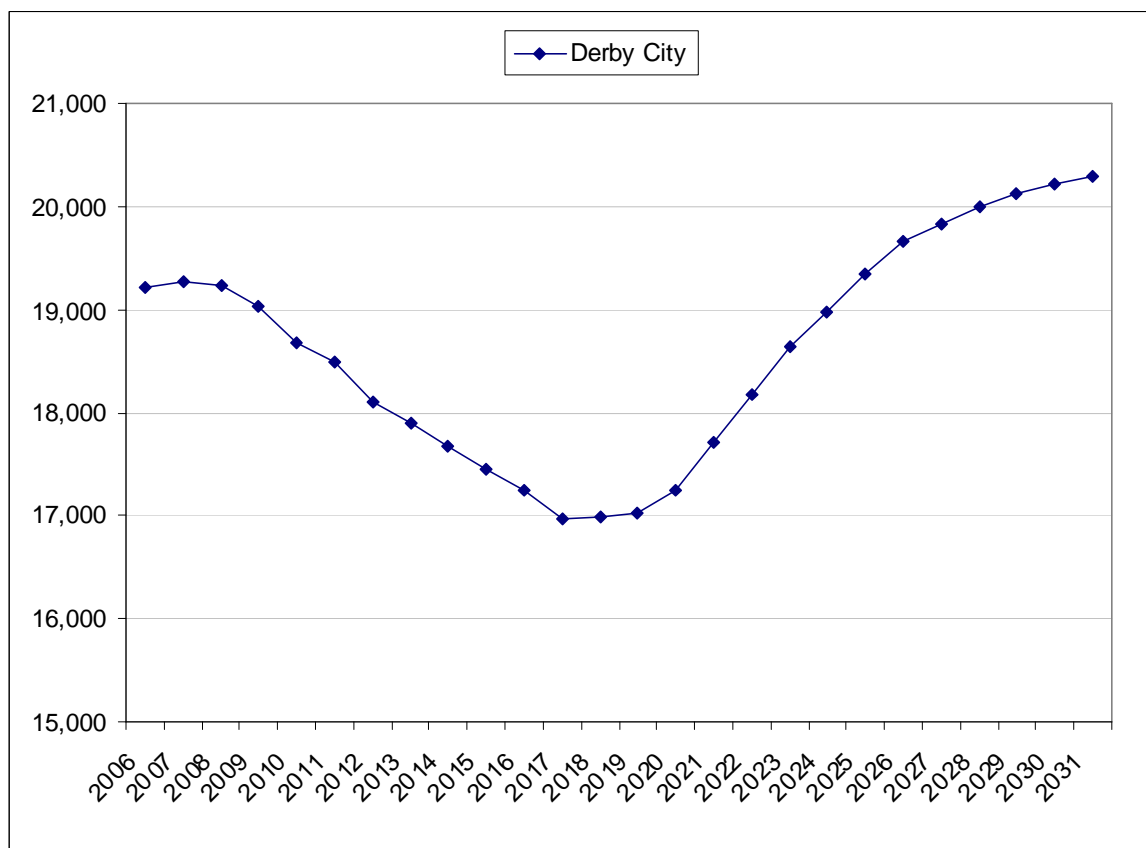
	2008/09
Provider	£
Academy Of Hair & Beauty Limited	£150,004.17
Access Training (East Midlands) Ltd	£70,108.52
Acorn Training Consultants Limited	£122,700.89
Babington Business College Limited	£518,524.51
Burton College	£692,253.24
Chesterfield College	£971,929.15
Dart Limited	£209,710.59
Derby College	£1,405,008.66
Derbyshire And Nottinghamshire Chamber Of Commerce And Industry	£565,979.50
JHP Group Limited	£246,975.30
Kaplan Financial Limited	£73,565.09
Mark Bremner	£75,639.97
Millbrook Management Services Limited	£124,183.78
National Council On Ageing	£421,955.82
NLT Training Services Limited	£672,511.84
Protocol Skills Limited	£188,952.82
Rathbone Training	£159,162.99
Rolls-Royce Plc	£1,240,613.02
Sheffield Trainers Limited	£997,124.77
South East Derbyshire College	£220,226.19
Stephenson College	£112,821.65
Stubbing Court Training Limited	£181,925.04
Tamworth And Lichfield College	£58,394.02
TBG Learning Ltd	£97,865.45
Training Services 2000 Ltd	£603,044.12
Triangle Training Ltd	£417,801.96
University Of Derby	£357,384.46
VT Training Plc	£197,656.20
Webs Training Limited	£348,956.05
West Nottinghamshire College	£313,844.16

*Source: AMPS – Employer Responsive, Original Contract Value. This may differ from final funding for the year as this will depend upon contract performance.*

## Part 4 - Area Context

### 14-19 Population information

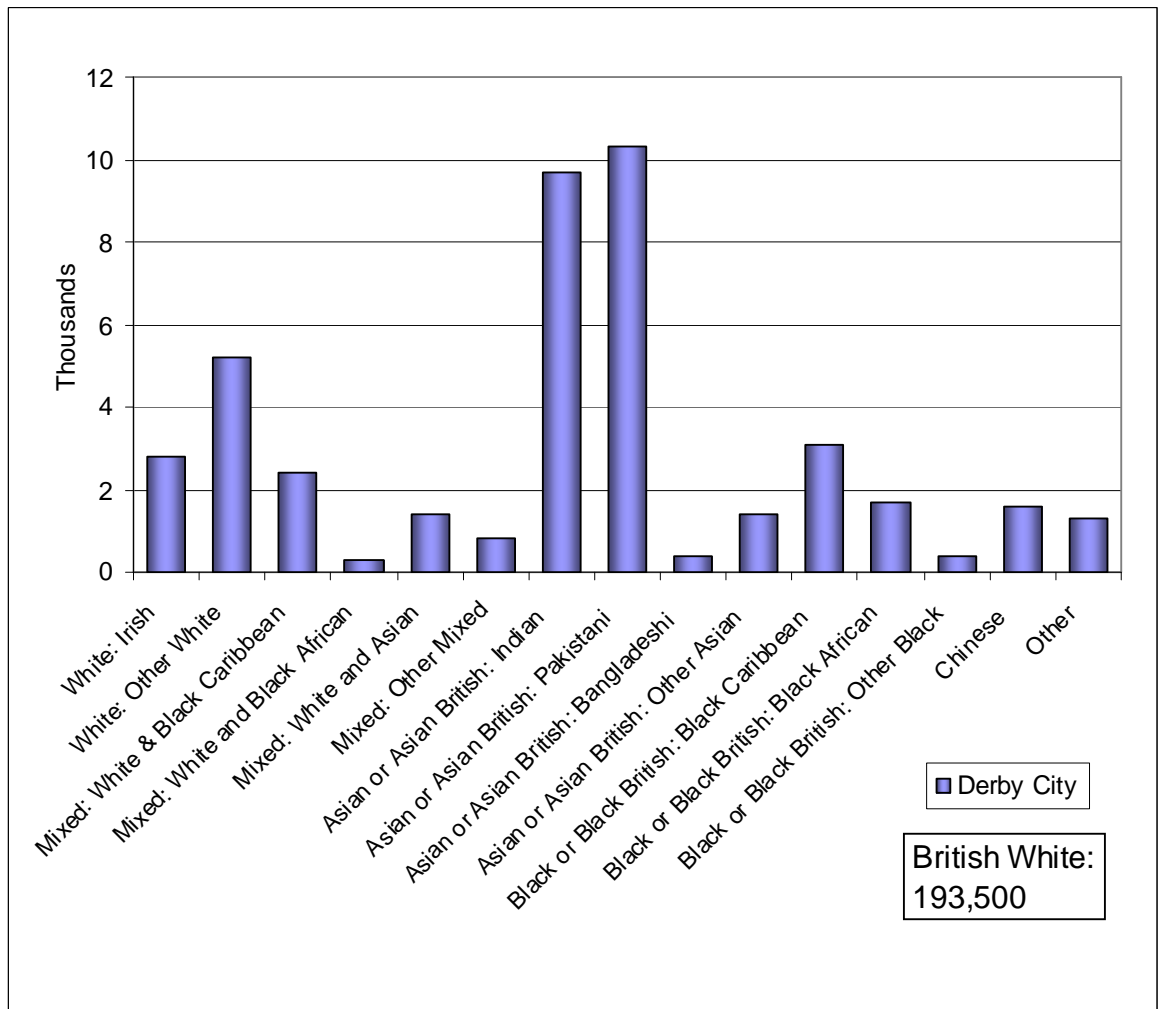
Figure 7: 14-19 population projections for Derby City, 2006-2030



Source: ONS 2006-based population projections

- 74 The 14-19 population level in Derby City peaked between 2006 and 2008 and is now starting the decline which will continue until 2017 in line with national projections. The 2017 level will be around 12% lower than the population at its peak in 2007. After 2017 the population will start to increase again, returning to 2006-08 levels by 2025 and continuing to rise until 2031. This has implications for planning for post-16 provision in the city.

**Figure 8: Estimate of resident population by ethnic group (all ages), 2006**

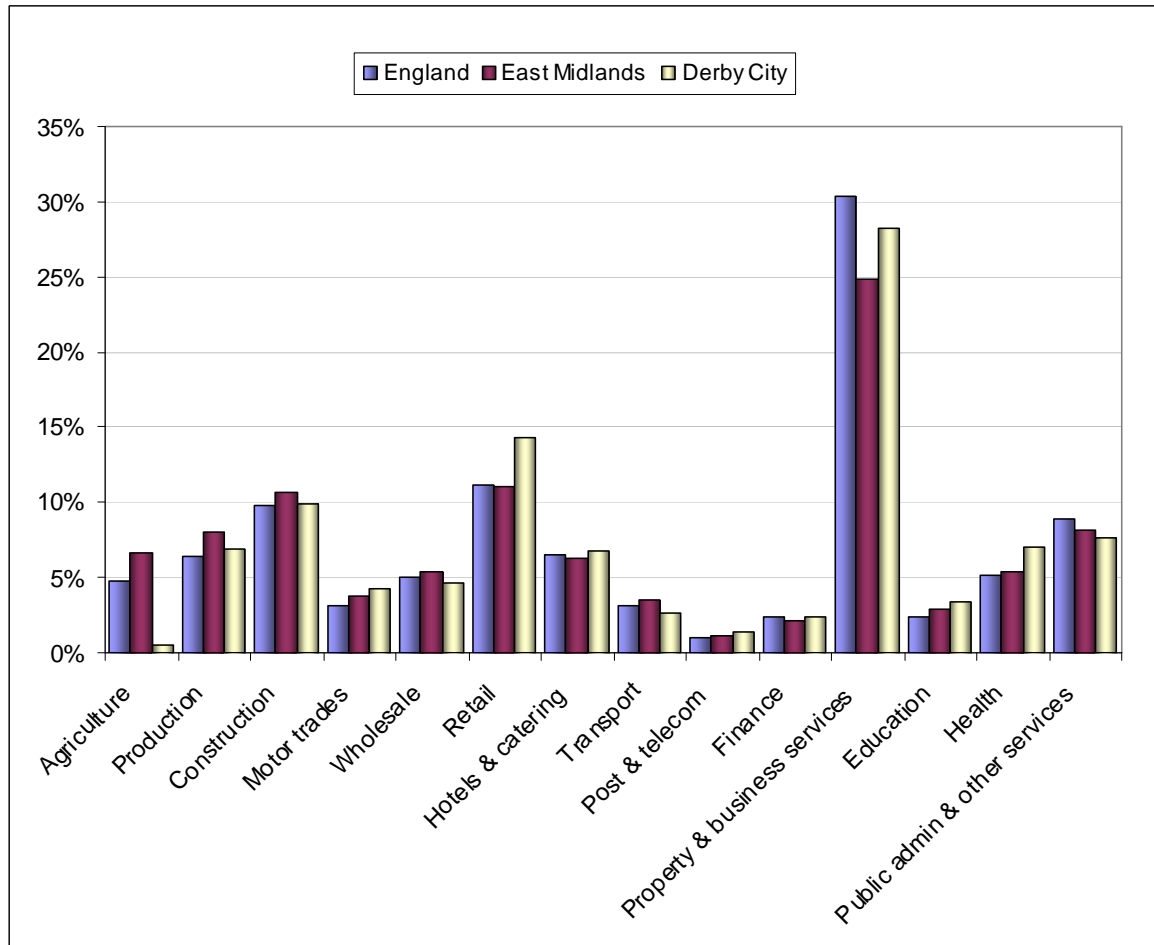


Source: OSN Estimates of resident population by ethnic group (experimental statistics). NB: the chart above does not show the White British Population figures

75 Derby City has a diverse population. The two largest non-white communities in Derby City are Pakistani (4.4%) and Indian (4.1%). Overall 14.7% of the population are non-white. The White British population is the largest group in the City.

## Employers and Employment in Derby City

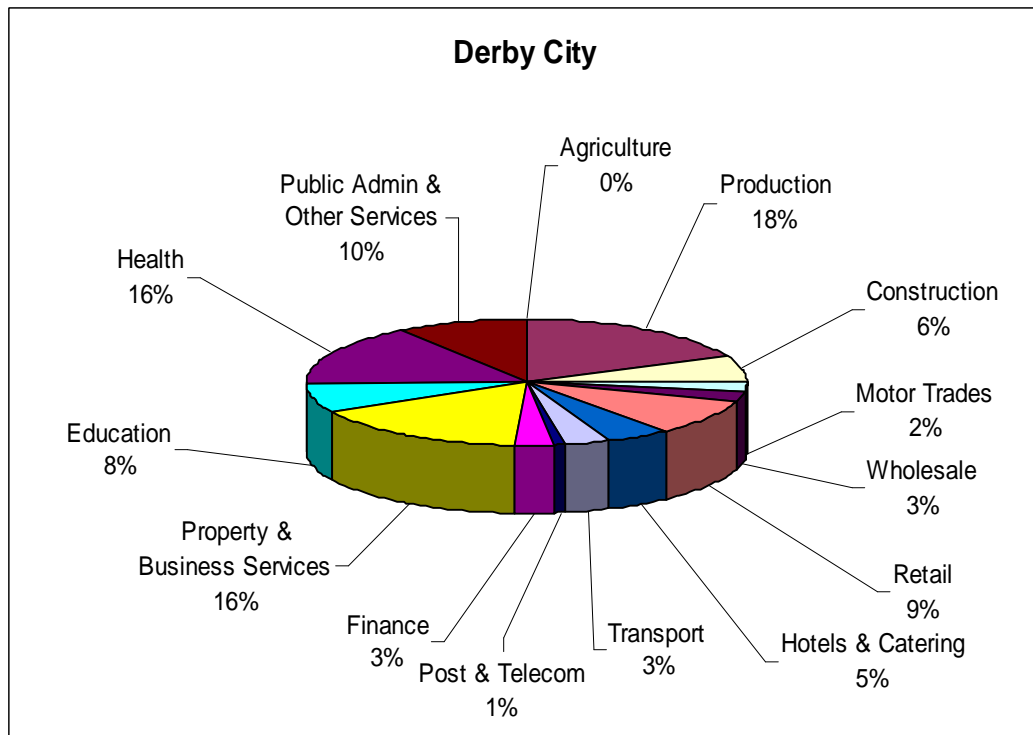
Figure 9: Distribution of business by broad industrial group



Source: Inter Departmental Business Register (IDBR) 2008

- 76 The City has a similar profile to that of the region with larger proportions of businesses in the motor trades, retail, health and property/business services than those in the region. The largest sectors in the City are 'Property & Business Services' (28.2%), 'Retail' (14.3%), and Construction (9.9%). All of these are sectors where the current recession is having an impact, leaving the City vulnerable in terms of the availability of employment for young people leaving school or college without at least a Full Level 2.

**Figure 10: Employees in Derby City by sector, 2007**



Source: *Annual Business Inquiry (ABI)*<sup>11</sup> (2007)

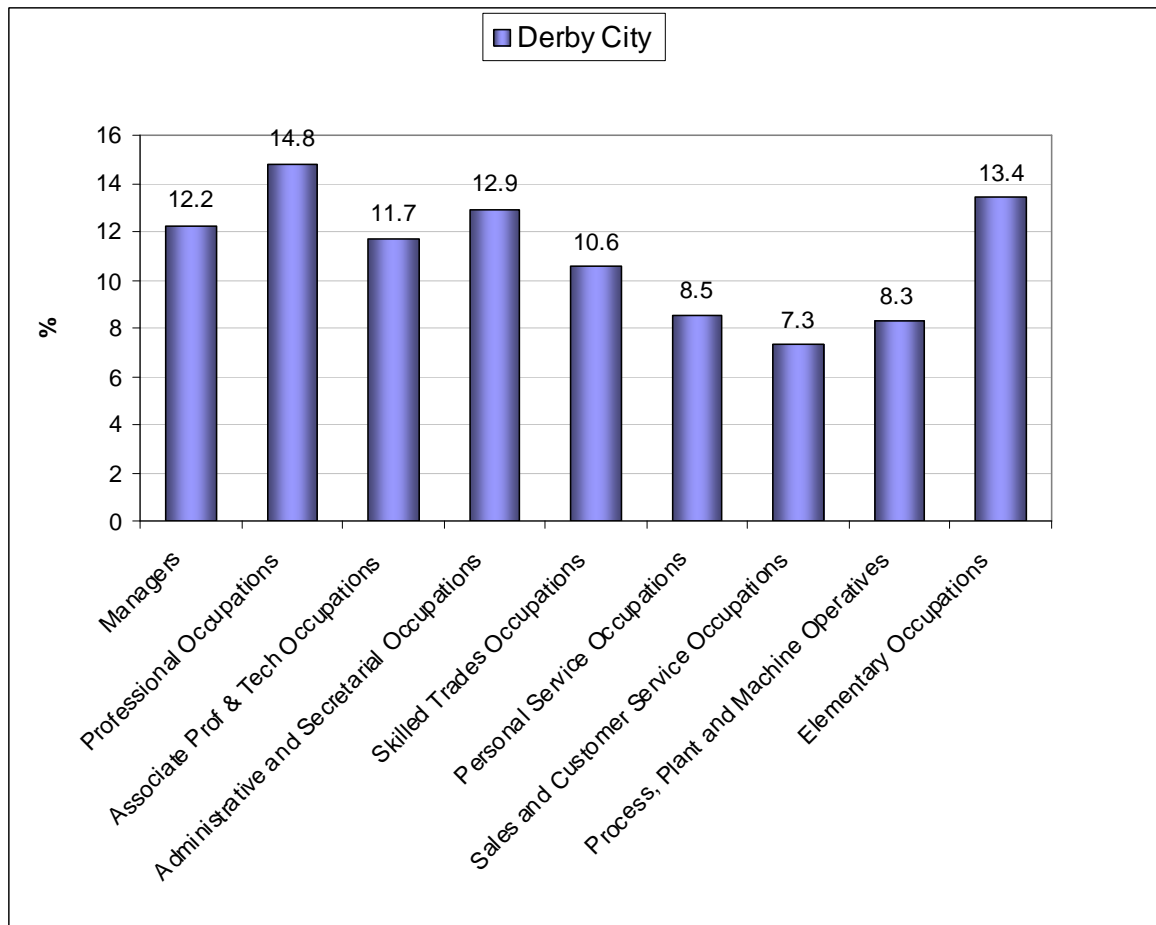
77 The sectors employing the largest numbers of people are 'Production' (18%, 23400 persons), 'Property & Business Services' (16%, 21,000 persons) and 'Health' (16%, 19900 persons). Employment in Health is expected to continue to be buoyant throughout the recession and is an area in which employment for young people could be a major consideration in the near future.

---

<sup>11</sup> The Annual Business Inquiry (ABI) shows the distribution of employees by industry. The ABI is a survey of a sample of businesses within the IDBR. Therefore there are sampling errors as with any survey and results should be viewed as a guide not an absolute. All numbers rounded to nearest 100.

## Skills

Figure 11: Employment by occupation group, 2007/08



Source: Annual Population Survey (APS), July 2007-June 2008

- 78 'Managers', 'Professional Occupations' and 'Associate Professional and Technical' are grouped together as 'Higher Occupations'. 'Administrative and Secretarial', 'Skilled Trades Occupations', 'Personal Service Occupations' and 'Sales and Customer Service Occupations' are grouped together as 'Intermediate Occupations'. 'Process, Plant and Machine Operators' and 'Elementary Occupations' are grouped together as 'Lower Occupations'. Recent and ongoing change is moving away from 'Lower' occupations towards 'Intermediate' and 'Higher' occupations.
- 79 'Professional Occupations' are now the largest single group at 14.8%. 'Higher' occupations have increased to almost the same percentage as Intermediate occupations as 'Lower' occupations continue to fall.

**Table 43: Proportion of 19-59/64 population with qualifications by level, 2007**

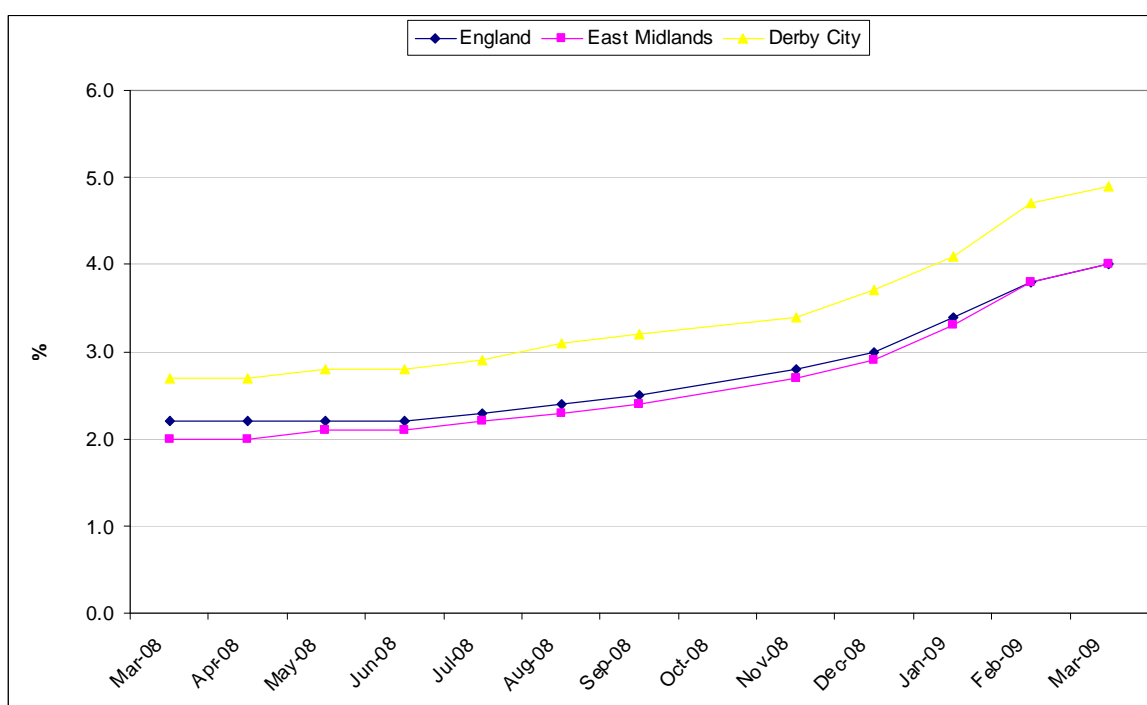
	Qualified to at least Level 4	Qualified to at least Level 3	Qualified to at least Level 2	Qualified lower than Level 2	Number (000s) with a qualification below Level 2	% with no qualification	Number (000s) with no qualification
Derbyshire	27.4%	47.2%	69.3%	18.7%	81	12.0%	52
Derby City	27.1%	44.5%	62.5%	20.5%	28	17.0%	23
East Midlands	27.3%	47.0%	67.2%	19.7%	499	13.1%	331

Source: Annual Population Survey 2007, <http://www.dcsf.gov.uk/rsgateway/DB/STA/t000809/Table1.xls>

80 Derby City compares favourably with the region in terms of the qualification levels of its residents at Level 4. For Levels 2 and 3, the city has a lower proportion qualified at these levels than in the region. 17% of the 19+ population have no qualifications at all, compared to 13% in the region.

## Unemployment

**Figure 12: Job Seekers Allowance Claimants Rates**



Source - Jobcentre Plus via Office of National Statistics (ONS)

81 As a measure of unemployment, Derby City has consistently shown JSA Claimant Rates above National and Regional levels over the last year. The position in March 09 is 4.9%, which is 0.9 percentage points higher than that in the region. Of the three cities, where claimant rates are the highest in the region, Derby is the lowest of the cities. Following a period of step increase between November 2008 and February 2009, March 09 is the first month that has shown a slowing of the rate of increase.

## **Part 5 - Sub-Regional Group (SRG) overview**

- 82 This section is intended to bring together issues from each local authority within the Sub-Regional Group to inform the planning discussions by presenting a more rounded picture.
- 83 Participation in education of 16 and 17 year olds has needs to increase to meet national averages and in line with the raising of the participation age. The drop out between 16 and 17, although a national trend, needs to be addressed to maintain participation levels.
- 84 Achievement at both Level 2 and Level 3 has shown improvement over the last few years, and this rate of increase needs to be maintained to exceed regional and national averages.
- 85 Apprenticeship participation has been decreasing and has been particularly badly affected by the recession. However, completion rates in Derbyshire are good and need to remain so to keep above regional averages. This contrasts with the picture in Derby City where completion rates fell at a much greater rate than regionally.
- 86 There is a similar difference between Derbyshire and Derby City in the average A-Level point score per student. While the average point score per student in Derbyshire has improved significantly to now stand above both regional and national averages, that in Derby City has not increased to the same extent.
- 87 FE success rates at Level 2 and 3 for 16-18 year olds living in the area need improvement.

Learning and Skills Council  
East Midlands

17A Meridian East  
Meridian Business Park  
Leicester, LE19 1UU  
Tel: 0845 019 4170  
Fax: 0116 228 1801

<http://www.lsc.gov.uk/regions/EastMidlands>

© LSC June 2009  
Published by the Learning and Skills Council

Extracts from this publication may be reproduced for non-commercial educational or training purposes on condition that the source is acknowledged and the findings are not misrepresented.

This publication is available in electronic form on the Learning and Skills Council website: [www.lsc.gov.uk](http://www.lsc.gov.uk)

If you require this publication in an alternative format or language, please contact the LSC Help Desk: 0870 900 6800

Publication reference: LSC-P-EM-430000