

**i** For information

**>lsc**

Leading learning and skills

# **16–19 Strategic Analysis for Derbyshire**

**June 2009**

Of interest to Local Authorities and other  
Partners and Stakeholders involved in  
14-19 planning

# 16-19 Strategic Analysis Derbyshire

15 June 2009

## Table of contents:

<b>Introduction</b> .....	<b>3</b>
<b>Background and issues for consideration</b> .....	<b>5</b>
<b>Part 1 - 16-18 Resident learner participation</b> .....	<b>7</b>
Analysis of participation by learning type 2007/08 .....	7
Further Education (FE) .....	7
Apprenticeships .....	8
School Sixth Forms .....	12
Entry to Employment .....	15
September Guarantee .....	18
Travel to learn patterns .....	19
Further Education .....	19
Schools Sixth Forms.....	21
16-18 resident learner achievement.....	23
FE Achievements .....	23
Apprenticeship Framework completions.....	23
School Sixth Forms .....	24
<b>Part 2 - Progress to PSA targets at 19</b> .....	<b>25</b>
<b>Part 3 - Provision within Derbyshire</b> .....	<b>28</b>
Further Education providers.....	28
FE participation .....	28
FE Achievement .....	32
FE funding .....	32
School Sixth Forms .....	33
School Sixth Form Participation .....	33
School Sixth Form achievement.....	34
School Sixth Form funding .....	35
Apprenticeships .....	35
Apprenticeship participation .....	35
Apprenticeship achievement .....	38
Apprenticeship funding .....	40
<b>Part 4 - Area Context</b> .....	<b>41</b>
14-19 Population information .....	41
Employers and Employment in Derbyshire .....	43
Skills.....	45
Unemployment.....	46
<b>Part 5 - Sub-Regional Group (SRG) overview</b> .....	<b>47</b>

## Introduction

This 16-19 report is the first in a series of three to be published for Local Authorities over the next 3 months. The purpose of the reports is to provide, in the Machinery of Government Transition year, sufficient details of 16-19 provision and learners for Local Authorities to be able to:

- a) Complement their existing strategic planning for 14-19 in the context of economic and employment information for their area.
- b) Develop detailed commissioning plans at LA and Strategic Regional Group levels.
- c) Focus on specific areas for improvement in their planning.
- d) Understand the provision accessed by their residents.
- e) Understand the scope and quality of the provision for those learners, wherever they are resident who choose to learn within providers situated within the LA's boundaries.

### What the Series One report contains

Series one report contains sufficient detail of provision accessed by residents to enable points (a), (c) and (d) above. In addition, by its focus on providers it also allows LAs to achieve points (b) and (e) above.

### Series Two and Three reports

These reports will provide more detail of specific provision and groups of learners, such as those with Learning Difficulties and/or Disabilities (LDD) and those on Entry to Employment (E2E) programmes. In addition details of the curriculum offered in 16-18 institutions and the characteristics of learners studying those curricula will be provided. It is intended that the series two and three reports will aid LAs in particular in the execution of points (b) and (c) above by increasing their understanding of need and provision. Planned final volumes of learners and funding for 2009/10 for the relevant providers in each Local Authority will also be part of series two reports.

### Data for the reports

Where relevant data is published nationally by the Department for Children, Schools and Families, such as that in statistical first reports, or by the Office for National Statistics, this data has been used. Much of the remaining data comes from submissions on the Individual Learner Record (ILR) made by providers to the LSC, from school census data, or from internal LSC systems designed to deal with allocations of funding to providers and measuring targets. Since data comes in at specific times of the year for FE and schools, only whole year data is provided for these types of institutions. This restricts these data sets to 2005/06 to 2007/08. For E2E and Apprenticeships, data arrives monthly, so in-year (2008/09) data is provided in these cases.

In January, 2007, the LSC consulted with the sector on a new funding approach in the document *Delivering World-class Skills in a Demand-led System*. Following this consultation the LSC's funding approach changed significantly for 2008/09. This has had an effect on how the data is collated and aggregated together in 2008/09. Therefore it is urged that when making comparisons across these two years this change is taken into consideration.

**Accessing the reports and information**

The reports will be made available via the LSC's external website. Where information is confidential a separate file will be provided for LAs on disc. From July 2009, an updated data website will be available for LAs.

## Background and issues for consideration

- 1 Employment in Derbyshire is above regional averages. The level of economic inactivity (16.7%) and unemployment (4.9%) is lower than both that in the region and that in England as a whole<sup>1</sup>. The largest number of **employers** is to be found in property/business services, construction and retail. Compared to the region as a whole, there is a lower proportion of employers in the sectors of retail and public administration.
- 2 The greatest proportions of **employees** are to be found in production, property and business services, health and education services. Whilst 23.6 % of the employers in the county are in the property and business services sector, this sector only employs 12% of the total number of employees.
- 3 Derbyshire has a slightly greater proportion of workers employed as managers and professional occupations than the regional average. The area also has lower proportions of workers employed in lower order occupations, such as elementary occupations.
- 4 The levels of qualifications in the population are similar to regional averages, with 69% of the population qualified to at least Level 2 and 47% qualified to at least Level 3. Nineteen per cent hold a qualification below Level 2 (20% in the region) and 12% hold not qualifications at all.
- 5 The 14-19 cohort had been increasing in Derbyshire but peaked in 2007. Participation in education and training of 16 and 17 year olds is around the regional average and has remained static over the last three years.<sup>2</sup> In 2006, 78% of 16 and 17 year olds were in education or training post 16 compared to 79% in the East Midlands, and 82% in England. There are significant differences between participation at 16 and that at 17. The level of participation decreased by eight percentage points between the ages of 16 and 17. This is similar to the national trend.
- 6 Participation in school sixth forms in Derbyshire is similar to the regional average, with 29% of 16 and 17 year olds choosing to continue learning in maintained schools. The majority of these learners attend schools within Derbyshire, but several hundred learners travel to Derby City, Derbyshire and outside of the East Midlands. Participation in Apprenticeships had decreased between 2006/07 and 2007/08 but has dropped away more sharply, largely due to the lack of employers offering Apprenticeship places as the economic downturn has begun to bite. Participation in Further Education (FE) has increased slightly over the last three years, and makes up 16% of 16-18 FE learners in the East Midlands.
- 7 Achievement at Level 2 by age 19 is above regional averages but below national ones. In terms of GCSE results, Derbyshire pupils performed in line with the regional average for achievement of five GCSEs grades A\*-C in 2007/08. When English and Maths are included, the Derbyshire figure (48.2%) is several points above both the regional (46.8%) and the national averages (47.3%).

---

<sup>1</sup> Source: Annual Population Survey, October 2007- September 2008, from [www.nomisweb.co.uk](http://www.nomisweb.co.uk) 02 June 2009.

<sup>2</sup> DCSF, SFR 13/2008: Participation in education and WBL of 16 and 17 year olds by LEAs in England

- 8 For Level 3 achievement by 19, Derbyshire (47%) is above the regional figure (46%) but below the national average ((49.8%). Although increases the proportion of young people achieving a Level 3 by 19 slowed in 2005/06, the last two years have shown strong growth.
- 9 In 2007/08, the quality of provision in FE colleges in Derbyshire improved on the previous year but yet all providers were below the regional average success rate. Particular improvement in Derbyshire was seen in improved success rates at Full Level 3 for all providers.
- 10 Apprenticeship completion rates for the Derbyshire LSC area stood above the regional rate in 2007/08 as it had done in the previous two years. Over that period, the rates had increased by 7 percentage points, but this was below the regional rate of increase at 11 percentage points.

**Issues for consideration/improvement:**

- Participation in education of 16 and 17 year olds has been stable, but needs to increase to meet national averages and in line with the raising of the participation age. The drop out between 16 and 17, although a national trend, needs to be addressed to maintain participation levels.
- Achievement at both Level 2 and Level 3 has shown improvement over the last few years, and this rate of increase needs to be maintained for Derbyshire to exceed regional and national averages.
- Apprenticeship participation has been decreasing and has been particularly badly affected by the recession. However, completion rates in Derbyshire are good and need to remain so to keep above regional averages.

## Part 1 - 16-18 Resident learner participation

- 11 This section is intended to show where the young people living within Derbyshire local authority (LA) are learning and to highlight any issues relating to demand for learning within the area.

### Analysis of participation by learning type 2007/08

#### Further Education (FE)

**Table 1: East Midlands 16-18 FE learners by LA of residence**

Learner LEA	2006/07 (full year)		2007/08 (full year)		2008/09 (as at March 2009)	
	Learners	% of East Midlands	Learners	% of East Midlands	Learners	% of East Midlands
Derby City	3,401	5.9%	3,575	6.0%	3,406	5.7
Derbyshire	9,644	16.8%	9,708	16.3%	9,746	16.2
Leicester City	6,637	11.5%	6,850	11.5%	7,016	11.7
Leicestershire	6,856	11.9%	7,098	11.9%	6,996	11.6
Lincolnshire	8,144	14.2%	8,400	14.1%	9,011	15.0
Northamptonshire	8,186	14.2%	8,424	14.1%	8,366	13.9
Nottingham City	4,811	8.4%	5,082	8.5%	4,965	8.3
Nottinghamshire	9,336	16.2%	9,702	16.3%	10,136	16.8
Rutland	523	0.9%	562	0.9%	525	0.9
(Unknown based on Postcode)			237	0.4%		
Total East Midlands	57,538	100.0%	59,638	100.0%	60,167	100.0%

Source: 2007/08 ILR F05 returns (FE 0506-0708 Learner Drill down) and 2008/09 ILR F02 return

- 12 There were 9,644 and 9,708 16-18 year old FE learners in 2006/07 and 2007/08 respectively. This was a growth of 0.7 % between this period, which is considerably lower than the East Midlands figure of 3.6%. In 2007/08, Derbyshire LA residents represented 16.3% of all 16-18 year old FE learners within East Midlands.

**Table 2: Derbyshire 16-18 FE learners by gender**

	Year	Female		Male	
Derbyshire	2006/07	5,000	51.8%	4,644	48.2%
	2007/08	5,037	51.8%	4,671	48.1%
East Midlands	2006/07	29,226	50.8%	28,312	49.2%
	2007/08	30,217	50.7%	29,421	49.3%

Source: 2007/08 ILR F05 returns (FE 0506-0708 Learner Drill down)

- 13 Using LSC data returns, the female/male gender split in FE learners in 2006/07 and 2007/08 was 51.8% to 48.2% and 51.8% to 48.2% respectively. The comparable figures for East Midlands were 50.8% to 49.2% and 50.7% to 49.3% respectively. Using Office of National Statistics (ONS) Mid 2007

Population Estimates the 16-18 year old population female/ male split in Derbyshire was 48.3% to 51.7%.

**Table 3: Derbyshire 16-18 FE learners by ethnicity**

	Year	Asian		Black		Chinese		Mixed		Other		Unknown		White	
Derbyshire	2006/07	79	1%	29	0%	12	0%	99	1%	19	0%	61	1%	9,345	97%
	2007/08	70	1%	28	0%	19	0%	98	1%	23	0%	46	0%	9,424	97%
East Midlands	2006/07	4,935	9%	1,769	3%	164	0%	1,781	3%	487	1%	669	1%	47,733	83%
	2007/08	4,973	8%	1,881	3%	174	0%	1,839	3%	471	1%	656	1%	49,644	83%

Source: 2007/08 ILR F05 returns (FE 0506-0708 Learner Drill down)

- 14 LSC data returns show that the white community in Derbyshire represented 97% of the population in both 2006/07 and 2007/08. This is well above the East Midlands average of 83%. In 2007/08 the Asian and Mixed communities both represented 1% of the population. The England split white to non-white is 88.7% to 11.3%. (ONS MID 2006 Experimental Ethnicity Estimates).

**Table 4: Derbyshire 16-18 FE learners by highest level of study**

	Year	Notional Level									
		Entry and Level 1		Level 2		Level 3		Level 4, 5 and Higher		Other (including Mixed)	
Derbyshire	2006/07	1,542	16%	2,871	30%	5,207	54%	7	0%	17	0%
	2007/08	1,816	19%	2,645	27%	5,219	54%	4	0%	24	0%
East Midlands	2006/07	10,785	19%	17,631	31%	28,939	50%	65	0%	118	0%
	2007/08	12,359	21%	17,496	29%	29,556	50%	53	0%	174	0%

Source: 2007/08 ILR F05 returns (FE 0506-0708 Learner Drill down)

- 15 In 2007/08, more than half of 16-18 FE learners residents in Derbyshire were studying at Level 3, above the regional average of 50%. More than a quarter were studying at Level 2, slightly below the regional average of 29%. The remaining 19% were studying at Entry and Level 1 which has increased since 2006/07.

## Apprenticeships

- 16 This section examines the participation of learners living in the Derbyshire LA area who have undertaken or are undertaking Apprenticeships. The data includes learners who have been funded by East Midlands LSC areas, other LSC areas in England or the National Employer Service. An average of the number of learners undertaking Apprenticeships in a given month over a 12 month period is used to show participation in the 2006/07 and 2007/08 tables.

**Table 5: Resident Learners by LA Level participating on Apprenticeships and proportion within the East Midlands<sup>3</sup>**

Local Authority	2006/07	% East Midlands	2007/08	% East Midlands
Derby City	832	6.0	843	6.3
Derbyshire	2769	20.1	2657	19.7
Leicester City	519	3.8	477	3.5
Leicestershire	1949	14.1	1899	14.1
Lincolnshire	2128	15.4	2013	14.9
Northamptonshire	2043	14.8	1994	14.8
Nottingham City	755	5.5	774	5.7
Nottinghamshire	2740	19.9	2767	20.5
Rutland	67	0.5	55	0.4
<b>EAST MIDLANDS</b>	<b>13,802</b>	<b>100.0</b>	<b>13,479</b>	<b>100.0</b>

Source: ILR - WBL AND E2E DRILL DOWNS 2006/07 and 2007/08 (July 2007 and July 2008)  
 'Average in Learning' data

- 17 Derbyshire LA area has the second highest proportion of resident learners undertaking Apprenticeships in the region compared to other local authority areas (19.7%).

**Table 6: 16-18 Apprenticeship Participation by Programme Level, 2006/07 – 2007/08**

Area	Programme Level	2006/07	2007/08	% change 2006/07 - 2007/08
<b>Derbyshire LA</b>	Apprenticeships	1719	1673	-6.3
	Advanced Apprenticeships	1050	984	-2.7
	<b>Total</b>	<b>2769</b>	<b>2657</b>	<b>-4.0</b>
<b>East Midlands</b>	Apprenticeships	8905	8719	-2.1
	Advanced Apprenticeships	4897	4760	-2.8
	<b>Total</b>	<b>13,802</b>	<b>13,479</b>	<b>-2.3</b>

Source: ILR - WBL AND E2E DRILL DOWNS 2006/07 and 2007/08 (July 2007 and July 2008)  
 'Average in Learning' data

- 18 There has been a reduction in overall Apprenticeship participation in 2007/08 from 2006/07 amongst Derbyshire learner residents (-4%). This decrease was higher than the regional average (-2.3%).
- 19 At the Programme level, both Apprenticeships and Advanced Apprenticeship saw a decline in learner participation, with Apprenticeships having the greatest percentage decrease. Reductions were also evident in the region overall for both Programme levels.

<sup>3</sup> The data shows an average of learners over a 12 month period undertaking an Apprenticeship

**Table 7: 16-18 Overall Apprenticeship Programme Participation by Gender, 2006/07 – 2007/08**

Area	Gender	2006/07		2007/08	
		Number	%	Number	%
Derbyshire LA	Female	966	34.9	923	34.7
	Male	1803	65.1	1734	65.3
	<b>Total</b>	<b>2769</b>	<b>100.0</b>	<b>2657</b>	<b>100.0</b>
East Midlands	Female	4,958	35.9	4,916	36.5
	Male	8,844	64.1	8,563	63.5
	<b>Total</b>	<b>13,802</b>	<b>100.0</b>	<b>13,479</b>	<b>100.0</b>

Source: ILR - WBL AND E2E DRILL DOWNS 2006/07 and 2007/08 (July 2007 and July 2008)  
 'Average in Learning' data

- 20 The proportional gender split between males and females participating on Apprenticeships amongst Derbyshire resident learners was similar to the regional proportion in 2006/07 and 2007/08.

**Table 8: 16-18 Overall Apprenticeship Programme Participation by Ethnicity, 2006/07 – 2007/08**

Area	Ethnicity	2006/07		2007/08	
		Number	%	Number	%
Derbyshire LA	Ethnic Minority	31	1.1	36	1.3
	White	2,731	98.6	2,611	98.3
	Not Known	7	0.2	10	0.4
	<b>Total</b>	<b>2,769</b>	<b>100.0</b>	<b>2,657</b>	<b>100.0</b>
East Midlands	Ethnic Minority	420	3.0	472	3.5
	White	13,335	96.6	12,953	96.1
	Not Known	47	0.3	54	0.4
	<b>Total</b>	<b>13,802</b>	<b>100.0</b>	<b>13,479</b>	<b>100.0</b>

Source: ILR - WBL AND E2E DRILL DOWNS 2006/07 and 2007/08 (July 2007 and July 2008)  
 'Average in Learning' data

- 21 Compared to the regional proportion, there was a lower proportion of minority ethnic individuals living in Derbyshire who were participating on Apprenticeships in 2006/07 and 2007/08.

**Table 9: 16-18 Overall Apprenticeship Programme Participation by Learners with Learning Difficulties and/or Disabilities, 2006/07 – 2007/08**

Local Authority	2006/07				2007/08			
	No Disability/ Learning Difficulty	Not Known/ Not Provided	Disability/ Learning Difficulty Recorded	% with Disability /Learning Difficulty	No Disability/ Learning Difficulty	Not Known/ Not Provided	Disability/ Learning Difficulty Recorded	% with Disability /Learning Difficulty
Derbyshire	2630	14	125	4.5	2543	15	98	3.7
<b>East Midlands</b>	12987	53	762	5.5	12768	65	646	4.8

Source: ILR - WBL AND E2E DRILL DOWNS 2006/07 and 2007/08 (July 2007 and July 2008)  
'Average in Learning' data

- 22 Learners on Apprenticeships, as in FE, are asked whether they feel they have a learning difficulty and/or disability and so the numbers shown here and in later tables reflect learners who have self-declared a difficulty or disability.
- 23 The proportion and volume of learners with a learning disability and/or disability from Derbyshire undertaking Apprenticeships has decreased in 2007/08 from 2006/07. This is a reflection of the overall regional picture.

### 2008/09 Data – Period 8 (latest to March 2009)

- 24 Latest information on Apprenticeships is available up to March 2009 in the academic year. The data below provides provisional indications of current participation on the Apprenticeship programme by learners resident in Derbyshire. Data as at March 2008 for 2007/08 is used to compare the current picture.

**Table 10: 16-18 Apprenticeship Participation, 2008/09**

Area	Programme Level	2007/08 (March 08)	2008/09 (March 09)	2007/8 - 2008/09 Change	
				Number	% Change
Derbyshire LA	Apprenticeship	1736	1,595	-141	-8.1
	Advanced Apprenticeship	1014	971	-43	-4.3
	<b>Total</b>	<b>2,751</b>	<b>2,566</b>	<b>-184</b>	<b>-6.7</b>
East Midlands	Apprenticeship	9036	8,577	-459	-5.1
	Advanced Apprenticeship	4990	4,748	-242	-4.9
	<b>Total</b>	<b>14,027</b>	<b>13,325</b>	<b>-702</b>	<b>-5.0</b>

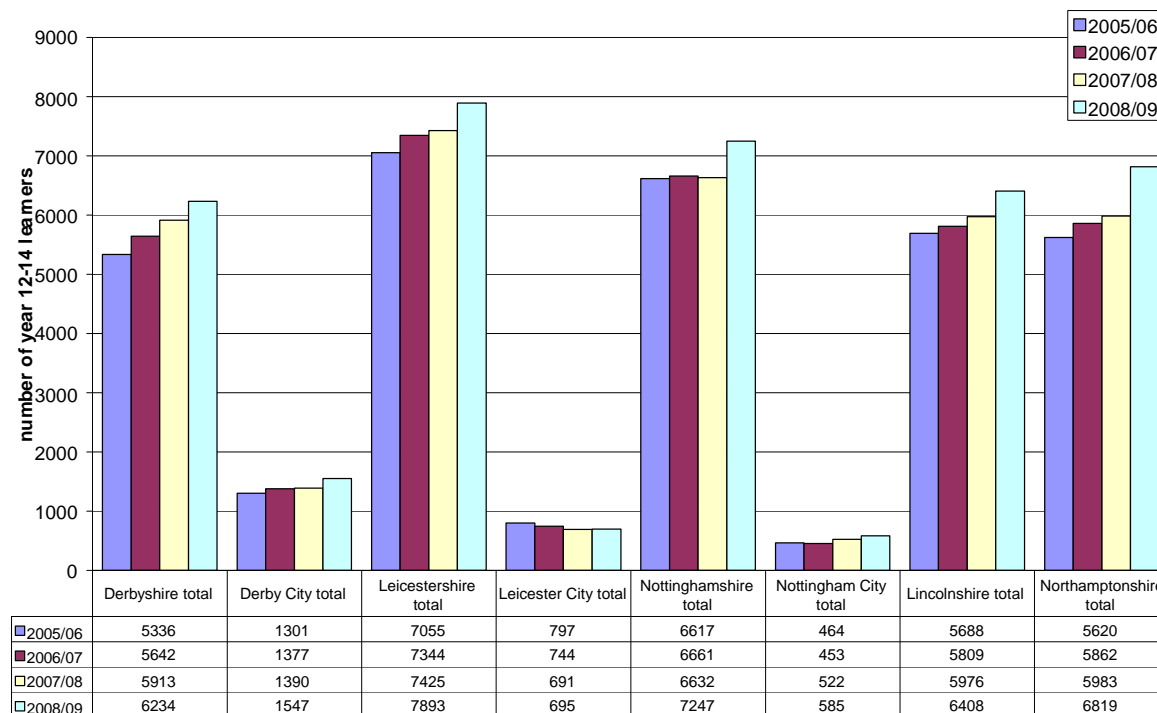
Source: ILR - Employer Responsive Drill Downs 2008/09, Period 8 (March 2009), WBL and E2E 2007/08 Period 8 Drill Downs (March 2008)

- 25 Overall, Apprenticeship participation is currently 6.7% lower in 2008/09 compared to the same period in 2007/08 amongst learners residing in Derbyshire (- 184 learners). This is higher than the regional average. .
- 26 At the Programme Level, a greater reduction has been seen in Apprenticeships (Level 2) than for Advanced Apprenticeships.

## School Sixth Forms

27 There are 26 schools with sixth forms in Derbyshire. 21.6% of the total 16-18 population living in the LA are educated at these institutions<sup>4</sup>. On comparing 2005/06 to 2008/09, there has been an increase of 17% in the Schools Sixth Form population.

**Figure 1: 16-18 learner numbers in school sixth forms, 2006/07-2008/09**

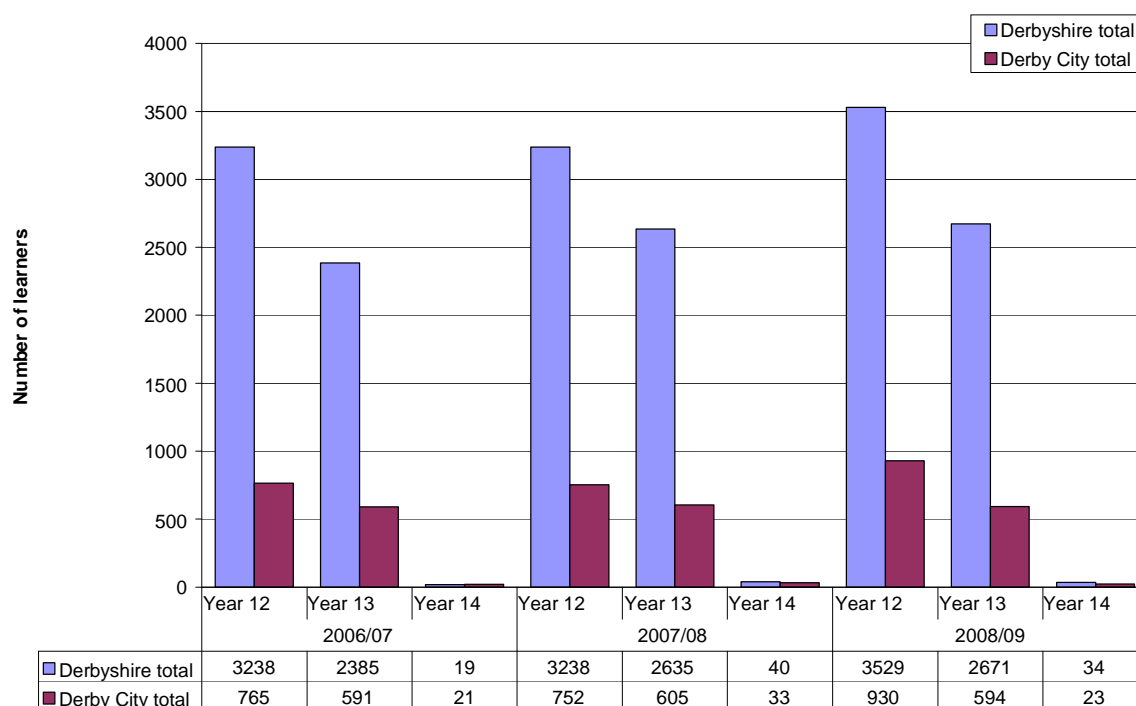


Source: PLASC, 2006-2008

28 Derbyshire saw an increase of 321 learners in Years 12-14 in 2008/09, a 5 per cent increase on 2007/08 numbers. However, this increase was one of the lower rates of increase in the East Midlands.

<sup>4</sup> 16-18 single year mid-2007 population estimates from the Office of National Statistics and the 2008/09 Schools Sixth Form 2008/09 Census data have been used to calculate this figure

**Figure 2: Learner numbers in Years 12-14 for Derbyshire and Derby, 2006/07-2008/09**



Source: PLASC, 2006-2008

- 29 Similar to previous years, in 2008/09, there was a 27% decrease in learners in the cohort between years twelve and thirteen in Derbyshire School Sixth Forms. A very small percentage stayed on in learning into year 14.

**Table 11: 16-18 learners attending a Schools Sixth Form funded by the LSC East Midlands: Gender breakdown (% of total group)**

School LA	2007/08 Learners		2008/09 Learners	
	Female %	Male %	Female %	Male %
Derby City	54.5	45.5	54.2	45.8
Leicester City	51.5	48.5	49.4	50.6
Nottingham City	57.3	42.7	56.4	43.6
Nottinghamshire	53.1	46.9	53.3	46.7
Derbyshire	53.4	46.6	53.0	47.0
Leicestershire	52.3	47.7	50.5	49.5
Lincolnshire	53.2	46.8	53.1	46.9
Northamptonshire	53.3	46.7	52.6	47.4
<b>East Midlands</b>	<b>53.1</b>	<b>46.9</b>	<b>52.5</b>	<b>47.5</b>

Source: LSC MI 2007/08 and 2008/09 Schools Sixth Form Analysis

- 30 The proportional gender split of those attending a Schools Sixth Form in Derbyshire is similar to the region both in 2007/08 and 2008/09, with more females participating than males.

**Table 12: 16-18 learners attending a Schools Sixth Form funded by the LSC East Midlands: Ethnicity breakdown (% of total group)<sup>5</sup>**

LA Area	Year	Any Other	Asian or Asian British	Black or Black British	Chinese	Mixed Heritage	Not Known/Not Provided	White
Derby	2007/08	0.2	16.0	2.6	1.0	2.5	2.2	75.4
	2008/09	0.7	14.7	2.1	0.8	2.3	1.3	78.1
Leicester	2007/08	1.0	40.1	5.8	0.0	7.1	0.9	45.1
	2008/09	1.2	38.6	6.4	0.1	5.7	1.9	46.1
Nottingham	2007/08	0.2	14.5	10.7	1.1	4.5	0.9	68.0
	2008/09	1.0	19.1	8.9	0.5	5.2	0.2	65.1
Nottinghamshire	2007/08	0.4	2.4	0.9	0.6	1.1	0.8	93.9
	2008/09	0.4	2.5	0.8	0.8	1.4	1.4	92.6
Derbyshire	2007/08	0.1	0.9	0.2	0.4	1.2	0.6	96.6
	2008/09	0.2	0.8	0.2	0.3	1.1	0.8	96.5
Leicestershire	2007/08	0.3	12.1	0.5	0.5	2.0	2.0	82.5
	2008/09	0.3	11.8	0.6	0.5	2.2	2.6	82.0
Lincolnshire	2007/08	0.5	1.3	0.6	0.7	1.1	0.9	95.0
	2008/09	0.3	1.1	0.6	0.7	1.1	1.1	95.1
Northamptonshire	2007/08	0.4	4.6	2.3	0.5	2.5	1.5	88.2
	2008/09	0.4	4.6	2.9	0.5	2.7	1.2	87.9
East Midlands	2007/08	0.3	5.9	1.2	0.6	1.8	1.2	89.0
	2008/09	0.4	5.7	1.3	0.6	1.9	1.4	88.7

Source: LSC MI 2007/08 and 2008/09 Schools Sixth Form Analysis

- 31 Compared to the region as a whole, Schools Sixth Forms in Derbyshire had a higher proportion of learners from a White background.

<sup>5</sup> Asian or Asian British includes those who are Indian, Pakistani or Bangladeshi or from any other Asian background. Black or Black British includes those with an African or Caribbean heritage or who are from any other Black background. Mixed heritage includes those who are White and Asian, White and Black African, White and Black Caribbean or those from any other Mixed heritage background. White includes those who are White British, White Irish or from any other White background.

**Table 13: 16-18 learners attending a Schools Sixth Form funded by the LSC East Midlands: Special Educational Needs (SEN) (% of total group)**

LA NAME	2007/08 Learners				2008/09 Learners			
	School/ Early Years Action %	School/ Early Years Action + %	Statement %	No SEN %	School/ Early Years Action %	School/ Early Years Action + %	Statement %	No SEN %
Derby	1.1	0.1	1.0	97.7	4.7	0.7	1.1	93.6
Leicester	5.6	2.4	0.3	91.7	6.9	3.1	0.7	89.3
Nottingham	5.6	2.4	0.4	91.5	5.5	2.1	0.3	92.1
Nottinghamshire	4.0	0.5	0.4	95.1	4.8	0.8	0.6	93.8
Derbyshire	1.9	0.8	0.4	96.8	1.5	1.1	0.6	96.9
Leicestershire	1.9	1.0	1.1	96.0	2.4	1.1	1.0	95.5
Lincolnshire	2.5	1.1	0.9	95.4	4.2	1.5	0.9	93.4
Northamptonshire	3.2	0.8	0.8	95.2	5.7	1.2	0.9	92.2
<b>East Midlands</b>	2.8	0.9	0.7	95.6	3.8	1.2	0.8	94.2

*Source: LSC MI 2007/08 and 2008/09 Schools Sixth Form Analysis*

- 32 Table 13 shows the proportion of 16-18 learners with Special Education Needs (SEN) attending Schools Sixth Forms across local authority areas in the East Midlands in 2007/8 and 2008/09.
- 33 The data reflects a variation of learner proportions with SEN across the different local authority areas partly due to the different policies applied in different localities.
- 34 Further detailed information about learners with special education needs will be provided in a separate report to be published this summer focusing on learners with learning difficulties and/or disabilities.

### **Entry to Employment**

- 35 This section provides summary information about learners who have undertaken E2E learning in 2006/07 and 2007/08. The data is shown by the local authority in which the learner was living in during this period and includes provision contracted outside of the region.
- 36 More detailed information about the learners in terms of gender, ethnicity and learning difficulties and/or disabilities will be available in the next phase of these packs at the end of June.

**Table 14: E2E trends in Starts, Occupancy\*, and Average Length of Stay 2006/07 – 2007/08: learners living in local authority areas**

2005/06 -2007/08 Summary	2006/07	2007/08	2006/07	2007/08	2006/07	2007/08	2006/07	2007/08
	Starts		Participation (Occupancy)*		Total Leavers		Average Stay (weeks)	
Derby City	550	473	196	182	524	431	15.5	16.2
DERBYSHIRE	811	886	286	336	732	804	14.8	16.0
Leicester City	356	401	142	161	337	376	16.3	16.8
Leicestershire	312	380	119	148	318	342	15.1	15.9
Lincolnshire	621	613	272	297	573	553	20.9	19.1
Northamptonshire	711	676	274	287	652	694	17.2	17.9
Nottingham City	314	335	143	178	285	288	21.9	23.5
Nottinghamshire	662	609	323	438	636	552	21.2	24.4
Rutland	7	3	5	7	11	1	22.2	19.3
<b>EAST MIDLANDS</b>	<b>4344</b>	<b>4376</b>	<b>1760</b>	<b>2033</b>	<b>4068</b>	<b>4041</b>	<b>17.8</b>	<b>18.5</b>

Source: ILR - WBL and E2E drill downs 2006/07 – 2007/08. \*Occupancy shows the average number of learners on an E2E programme in one month during a 12 month period.

- 37 Derbyshire has seen an increase in starts and participation in E2E between 2006/07 and 2007/08, which reflects the overall regional increase.
- 38 However, the average stay in E2E learning (by weeks) has increased marginally during this period. This suggests that the more difficult to reach learners are enrolling on the programme and requiring more support to stay in learning. Nevertheless, the average length of stay in Derbyshire (16.0 weeks) in 2007/08 was still considerably below that of the region (18.5 weeks). In some part this is due to a high regional average driven up by Nottingham City/Nottinghamshire where the programme provides learning at Level 1 for E2E learners.

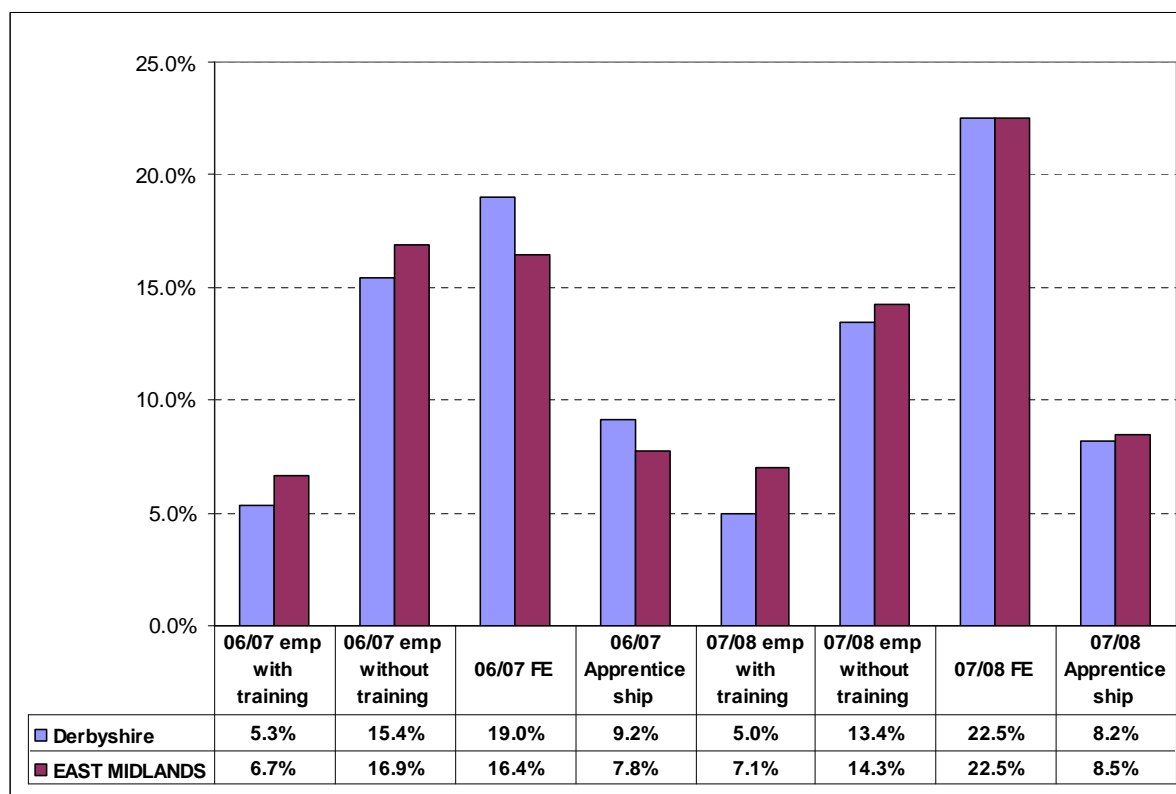
**Table 15: E2E trends in Positive Outcomes: Overall Positive Outcomes, FE and Apprenticeships (App) 2006/07 – 2007/08: learners living in local authority areas**

2006/07 - 2007/08 Summary	Positive outcomes									
	2006/07					2007/08				
	OVERALL	emp WITH training	emp WITHOUT training	FE	APP.	OVERALL	emp WITH training	emp WITHOUT training	FE	APP.
Derby City	229	21	69	101	38	219	20	50	122	27
DERBYSHIRE	358	39	113	139	67	395	40	108	181	66
Leicester city	162	14	54	49	45	218	16	51	84	67
Leicestershire	162	44	52	44	22	196	27	61	79	29
Lincolnshire	309	77	115	82	35	311	35	120	129	27
Northamptonshire	304	30	137	99	38	350	91	84	126	49
Nottingham City	104	15	29	51	9	124	23	26	58	17
Nottinghamshire	305	32	110	101	62	301	32	76	131	62
Rutland	9	0	7	2	0	1	1	0	0	0
<b>EAST MIDLANDS</b>	<b>1942</b>	<b>272</b>	<b>686</b>	<b>668</b>	<b>316</b>	<b>2115</b>	<b>285</b>	<b>576</b>	<b>910</b>	<b>344</b>

Source: ILR - WBL and E2E drill downs 2006/07 – 2007/08

- 39 A positive outcome from an E2E programme in LSC terms is a learner who progresses to either FE, an Apprenticeship or other employment with training. In LSC terms employment **without** training is not a positive outcome, but for ease of reading the employment without training figures have been included in Table 15 above.
- 40 The number of overall positive outcomes from E2E learning amongst Derbyshire's residents increased by 10% between 2006/07 and 2007/08. The proportion of Young People progressing into Apprenticeships fell from 19% to 17% over this period, whilst those going into FE rose by 7 percentage points. The proportion of young people leaving the programme to go to a job without training fell by 4 percentage points over this period. This compares favourably with the region where the proportion of young people going into Apprenticeships remained static, those going into FE rose by 9 percentage points and those leaving the programme to go to a job without training fell by 8 percentage points over this period.

**Figure 3: Derbyshire Learners - E2E trends in Positive Outcomes: Overall Positive Outcomes, FE and Apprenticeships (App) 2006/07 – 2007/08**



Source: ILR - WBL and E2E drill downs 2006/07 – 2007/08

### 2008/09 – Latest position to January 2009

- 41 The table below presents the latest position (to January 2009) on E2E starts by learners living in local authority areas in the region.

**Table 16: 2008/09 latest E2E Learner Starts – Learners Living in the East Midlands (includes provision contracted outside of the region)**

Local Authority Area	2008/09 16-18 E2E Starts - latest to January 2009
Derby City	225
DERBYSHIRE	590
Leicester City	124
Leicestershire	127
Lincolnshire	370
Northamptonshire	341
Nottingham City	202
Nottinghamshire	326
Rutland	4
<b>East Midlands total</b>	<b>2309</b>

Source: ILR - DASH 0809-0809 - E02 - Learner.xls

42 More detailed information on the latest picture will be available in the second phase of these packs.

## September Guarantee

**Table 17: September Guarantee status for Year 11 students, 2008/09**

	Y11 Guarantee			
	Offer made	Not ready for learning	No offer made	Not recorded
England	94.2%	2.9%	2.7%	0.2%
East Midlands	93.4%	5.1%	1.5%	0.0%
Derby City	93.0%	5.1%	1.9%	0.0%
Derbyshire	89.8%	8.4%	1.8%	0.0%
Leicester City	95.3%	3.4%	1.3%	0.0%
Leicestershire	95.3%	3.8%	0.8%	0.0%
Lincolnshire	94.5%	4.0%	1.5%	0.0%
Northamptonshire	92.5%	5.6%	1.9%	0.0%
Nottingham City	93.7%	4.1%	2.2%	0.0%
Nottinghamshire	93.9%	5.2%	0.9%	0.0%
Rutland	95.9%	2.5%	1.7%	0.0%

Source: Connexions via Department of Children Schools and Families NCCIS data system

**Table 18: September Guarantee status for 17 year olds, 2008/09**

	17 year old Guarantee			
	Offer made	Not ready for learning	No offer made	Not recorded
England	79.7%	9.6%	7.2%	3.4%
East Midlands	78.6%	16.8%	4.6%	0.0%
Derby City	78.2%	20.3%	1.5%	0.0%
Derbyshire	67.5%	30.7%	1.8%	0.0%
Leicester City	87.1%	8.7%	4.2%	0.0%
Leicestershire	88.7%	9.4%	1.9%	0.0%
Lincolnshire	73.7%	20.7%	5.6%	0.0%
Northamptonshire	65.8%	27.8%	6.4%	0.0%
Nottingham City	80.0%	13.2%	6.9%	0.0%
Nottinghamshire	78.2%	17.7%	4.1%	0.0%
Rutland	83.3%	16.7%	0.0%	0.0%

Source: Connexions via Department of Children Schools and Families NCCIS data system

- 43 In September 2008 Derbyshire achieved offer levels of 89.8% and 67.5% for Year 11 and Year 12 respectively. For the Year 11 guarantee this is 3.6 percentage points (pp) and 4.4 pp below regional and national levels and 9<sup>th</sup> out of 9 LA's within East Midlands. For the Year 12 guarantee this is 11.1 pp and 12.2 pp below regional and national levels and is 8<sup>th</sup> out of 9 LA's within East Midlands.
- 44 For Year 11, of those without an offer, 673 persons were recorded as 'Not ready for formal learning at this time' of which 492 were 'Going into employment without training to NVQ Level 2'. 148 were recorded as 'No offer Made', all due to being 'unable to contact'.

## Travel to learn patterns

### Further Education

- 45 81.6 per cent of Derbyshire resident 16-18 FE learners were learning at an FE institution within the East Midlands – 55 per cent within Derbyshire institutions. Over 1780 residents access FE provision contracted outside of the East Midlands region. This is usually due to proximity of institutions to the learner's place of residence, or proximity to parental work. In Table 19 the small numbers in distant regions – coded in yellow, are accessing provision from an institution whose home region is as indicated. Usually the institution makes local provision available. Learners do not travel to far flung parts of the country

**Table 19: 16-18 FE learners by LA of residence and region of FE institution, 2007/08**

LA of learner residence	Region of FE institution									Total resident 16-18 learners
	East of England	East Midlands	Greater London	North East	North West	South East	South West	West Midlands	Yorkshire & Humber	
<b>Derby</b>	4	3,305	3		5	3	4	246	5	3,575
<b>Derbyshire</b>	17	7,921	9	2	879	6	6	617	251	9,708
<b>Leicester</b>	6	6,784	8		10	3	1	32	6	6,850
<b>Leicestershire</b>	13	5,868	7		252	6	15	930	7	7,098
<b>Lincolnshire</b>	461	6,527	78	2	13	20	10	20	1,269	8,400
<b>Northamptonshire</b>	252	7,514	19		68	312	11	235	13	8,424
<b>Nottingham</b>	4	5,052	6		1	2		7	10	5,082
<b>Nottinghamshire</b>	30	9,370	16	2	12	8	13	41	210	9,702
<b>Rutland</b>	10	536			2	3	5	3	3	562
<b>Unknown</b>	7	201	1		8	1		6	13	237

Source: 2007/08 ILR F05 returns (FE 0506-0708 Learner Drill down)

- 46 The majority of Derbyshire resident 16-18 FE learners who learn outside of the East Midlands, go to North West providers to access their learning, primarily Cheadle and Marple Sixth Form College (275 learners), Tameside College (145 learners) and Aquinas College (113 learners) and Stockport College of Further Education (87 learners).
- 47 A high number of Derbyshire resident learners access their learning through West Midlands providers, mainly Burton College (533 learners). A further 192 learners leave Derbyshire to go to Sheffield College in Yorkshire and Humber Region.

**Table 20: Derby City and Derbyshire resident learners learning with East Midlands FE providers 2007/08**

LA of provider	Provider Name	Derby City		Derbyshire	
		Learner numbers	%	Learner numbers	%
<b>Derby City</b>	Derby City Council	41	1.1	18	0.2
	Derby College	2,875	80.4	966	10
<b>Derbyshire</b>	Chesterfield College	9	0.3	3,498	36.03
	Derbyshire County Council	3	0.1	282	2.9
	South East Derbyshire College	115	3.2	858	8.8
	Babington Business College Ltd (Derby)			1	0.01
	University of Derby, High Peak College	40	1.1	712	7.3
<b>Leicester City</b>	Leicester College			5	0.1
	Wyggeston and Queen Elizabeth I College			1	0.01
<b>Leicestershire</b>	Brooksby Melton College			1	0.01
	Leicestershire County Council			1	0.01
	Loughborough College	12	0.3	20	0.2
	South Leicestershire College			1	0.01
	Stephenson College	7	0.2	105	1.1
<b>Lincolnshire</b>	Boston College			2	0.02
	Grantham College	2	0.1	1	0.01
	Lincoln College			17	0.2
<b>Northamptonshire</b>	Tresham Institute			2	0.02
<b>Nottingham City</b>	New College, Nottingham	28	0.8	259	2.7
	South Nottingham College	14	0.4	33	0.3
	Castle College, Nottingham	43	1.2	496	5.1
<b>Nottinghamshire</b>	Bilborough College	88	2.5	324	3.3
	North Nottinghamshire College			50	0.5
	West Nottinghamshire College	28	0.8	267	2.8
	Sutton Centre			1	0.01
<b>East Midlands</b>	All providers	3,305	92.4	7,921	81.6

Source: 2007/08 ILR F05 returns (FE 0506-0708 Learner Drill down)

48 Nearly 1000 Derbyshire resident learners access their learning provision in Derby City, some 966 of these at Derby College. This is 10% of Derbyshire resident learners, the second highest proportion of Derbyshire 16-18 FE learners at any provider. The highest proportion, 36% of learners, attend Chesterfield College. There are other small out flows of learners to other Local Authority areas in the region. The largest are 788 learners from Derbyshire who travel to institutions in Nottingham City and a further 642 learners who travel to Nottinghamshire.

### Schools Sixth Forms

49 This section provides travel to learn patterns of School Sixth Form Learners living in Derbyshire. The data has been extracted from the 2008/09 Schools Sixth Form Census.

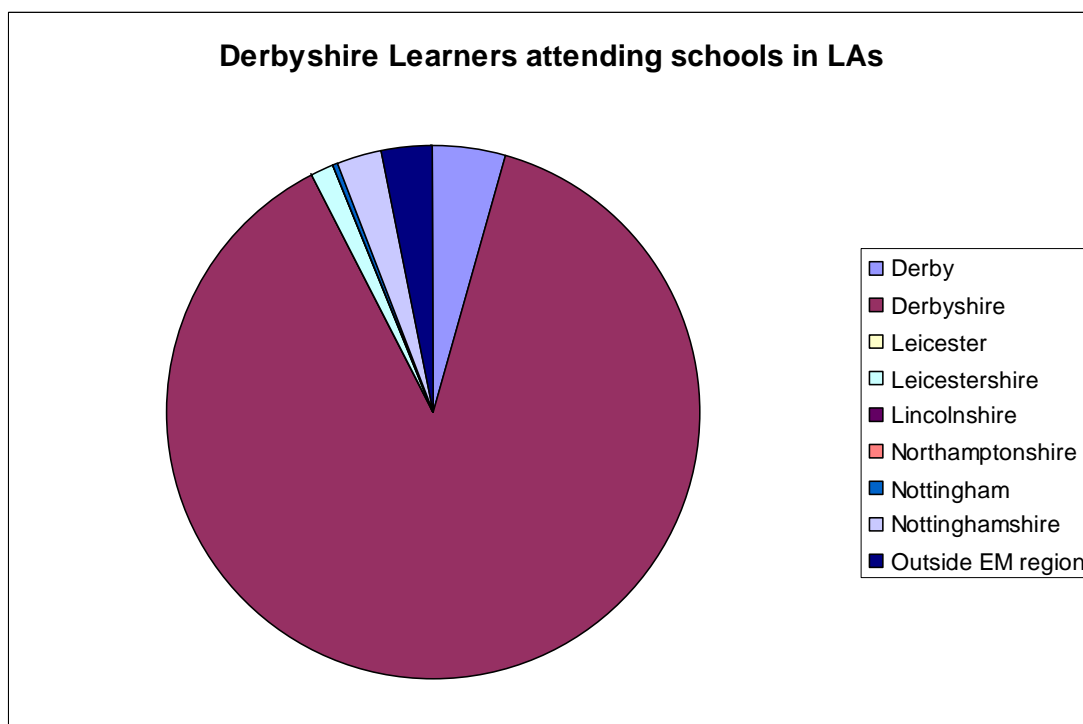
**Table 21: Schools Sixth Form Learners Travel to Learn patterns, 2008/09**

	Derbyshire LA		Derby City LA	
	Number	%	Number	%
<b>Number of learners resident in LA</b>	<b>6558</b>	100	<b>1780</b>	100
<b>Number of learners travelling to learn in:</b>				
<b>Derby</b>	299	4.6	1518	85.3
<b>Derbyshire</b>	5774	88.0	255	14.3
<b>Leicester</b>	0	0.0	0	0.0
<b>Leicestershire</b>	80	1.2	1	0.1
<b>Lincolnshire</b>	0	0.0	0	0.0
<b>Northamptonshire</b>	1	0.0	0	0.0
<b>Nottingham</b>	13	0.2	2	0.1
<b>Nottinghamshire</b>	190	2.9	1	0.1
<b>Outside EM region</b>	201	3.1	3	0.2

Source: Schools Sixth Form Census 2008/09

50 The majority of Schools Sixth Form learners living in Derbyshire attended a Schools Sixth Form in their locality (88%). There were 299 learners who travelled to Derby City Schools Sixth Forms and other small outflows to Nottinghamshire (190 learners) and outside of the region (201 learners).

**Figure 4: Schools Sixth Form Learners Travel to Learn patterns, 2008/09**



Source: Schools Sixth Form Census 2008/09

## 16-18 resident learner achievement

### FE Achievements

**Table 22: Aims achieved by learners resident in East Midlands local authorities by level, 2006/07-2007/08**

	2006					2007				
	Full Level 2 aims	% of aims at Full Level 2	Full Level 3 aims	% of aims at Full Level 3	Total aims	Full Level 2 aims	% of aims at Full Level 2	Full Level 3 aims	% of aims at Full Level 3	Total aims
Leicestershire	1,014	13.6%	600	8.1%	7,445	1,282	14.6%	973	11.1%	8,804
Leicester City	379	3.4%	120	1.1%	11,263	781	5.5%	403	2.8%	14,153
Northamptonshire	1,220	12.7%	875	9.1%	9,633	1,373	12.7%	1,055	9.8%	10,781
Derbyshire	1,643	11.0%	1,205	8.1%	14,956	1,653	10.6%	1,350	8.7%	15,566
Derby City	465	8.2%	322	5.7%	5,659	516	8.8%	330	5.7%	5,838
Lincolnshire	1,428	11.6%	960	7.8%	12,327	1,510	11.1%	1,177	8.7%	13,583
Rutland	48	4.8%	45	4.5%	1,006	66	5.1%	66	5.1%	1,303
Nottinghamshire	1,377	9.6%	993	6.9%	14,363	1,661	10.1%	1,190	7.2%	16,484
Nottingham City	602	7.3%	310	3.8%	8,260	634	7.0%	429	4.8%	9,014
East Midlands	8176	9.6%	5,430	6.4%	84,912	9,476	9.9%	6,973	7.3%	95,526

Source: 2007/08 ILR F05 returns (FE 0506-0708 Success rates Drill down)

51 Table 22 shows the proportions of curriculum study at different levels taken by Derbyshire residents. The count is by learning aim. An individual may be studying a range of learning aims at more than one level. So these figures do not equate to learners, but to enrolments at a particular level on a particular course. The count also only relates to those achieving at **Full** Level 2 or 3. There will be a large number of enrolments on courses that are at Level 2 and 3 but where the total learning aims studied do not amount to a **Full** Level 2 or 3. This explains the relatively low proportions of achievements.

### Apprenticeship Framework completions

52 The table below shows the number of full Apprenticeship Frameworks achieved by Derbyshire learner residents. In LSC terms, an Apprenticeship is only achieved if the learner leaves with the full framework completed, including all the key skills and technical certificates in that particular framework. Several apprentices achieve only an NVQ, because their employer often does not see the benefit in the learner taking the other elements of the programme. Those learners are not included in the table below.

**Table 23: 16-18 Apprenticeship Framework Completions by Achievement and Programme Level, 2006/07 – 2007/08**

Year	Programme Level	Derbyshire	East Midlands
2006/07	Apprenticeship	1012	4,777
	Advanced Apprenticeship	353	1,520
	Total	1365	6,297
2007/08	Apprenticeship	926	4,443
	Advanced Apprenticeship	345	1,483
	Total	1271	5,926
2006/07 - 2007/08 % change	Apprenticeship	-8.5	-7.0
	Advanced Apprenticeship	-2.3	-2.4
	Total	-6.9	-5.9

Source: WBL AND E2E DRILL DOWNS 2006/07 and 2007/08 (July 2007 and July 2008)  
Completions data

- 53 There has been a decrease in the overall number of Apprenticeship Frameworks completed and achieved by Derbyshire resident learners in 2007/08 compared to 2006/07 (-6.9%). This reduction is above the regional average.

### School Sixth Forms

- 54 As Table 24 below indicates, there has been a considerable rise in the average point score of those learners achieving A Level grades in Derbyshire between 2002 and 2006. However, the increase (16.6) does not compare favourably with either that in the region (30) or nationally (35). Out of the nine local authorities in the region, Derbyshire showed the smallest increase. This is an aspect to consider in terms of need for progress.

**Table 24: Average A-Level point score for candidates and entry by East Midlands local authority**

	Per candidate			Per Entry		
	2002	2006	Difference	2002	2006	Difference
Derby LA	237	256.1(r)	19.1	73	77.2(r)	4.2
Derbyshire LA	265.2	281.8(r)	16.6	75.3	76.9(r)	1.6
Leicester LA	211.7	243.4(r)	31.7	67.9	72.8(r)	4.9
Leicestershire LA	247.8	277.4(r)	29.6	72.9	74.1(r)	1.2
Lincolnshire LA	275.3	304.6(r)	29.3	76.6	79.1(r)	2.5
Northamptonshire LA	236.4	268.2(r)	31.8	71.8	75.6(r)	3.8
Nottingham LA	222.6	296.2(r)	73.6	70.9	77.1(r)	6.2
Nottinghamshire LA	234.4	260.3(r)	25.9	69.4	71.4(r)	2
Rutland LA	..	..(r)	..	..	..(r)	..
East Midlands	245.5	275.8(r)	30.3	72.6	75.4(r)	2.8
England	254.7	289.5(r)	34.8	76	80.2(r)	4.2

Source: DCSF, ([http://www.dcsf.gov.uk/inyourarea/statics/gor\\_E\\_12.shtml](http://www.dcsf.gov.uk/inyourarea/statics/gor_E_12.shtml))

## Part 2 - Progress to PSA targets at 19

55 The position of learners at age 19 in terms of the PSA target in any local authority is strongly influenced by the achievements in that local authority's schools at 16. These figures are shown in Table 25.

**Table 25: GCSE achievements by 15 year old pupils in the East Midlands, 2007/08**

	Number of 15 year old pupils			% achieving 5 A*-C grade GCSEs			% achieving 5 A*-C grades, incl. English and Maths		
	Boys	Girls	Total	Boys	Girls	Total	Boys	Girls	Total
<b>East Midlands</b>	<b>27,381</b>	<b>26,160</b>	<b>53,541</b>	<b>58.4</b>	<b>67.2</b>	<b>62.7</b>	<b>43.2</b>	<b>50.5</b>	<b>46.8</b>
<b>Derby</b>	1,540	1,519	3,059	63.2	63.9	63.6	46.8	51.9	49.3
<b>Derbyshire</b>	4,747	4,614	9,361	57.7	68.1	62.8	44.0	52.4	48.2
<b>Leicester</b>	1,835	1,639	3,474	52.2	58.9	55.3	37.1	42.7	39.7
<b>Leicestershire</b>	3,996	3,707	7,703	59.2	69.8	64.3	48.3	55.3	51.7
<b>Lincolnshire</b>	4,297	4,213	8,510	67.1	74.0	70.5	48.9	55.6	52.2
<b>Northamptonshire</b>	4,321	4,088	8,409	55.0	63.7	59.2	41.1	49.4	45.1
<b>Nottingham</b>	1,444	1,436	2,880	54.5	61.9	58.2	31.6	37.0	34.3
<b>Nottinghamshire</b>	4,963	4,717	9,680	55.5	66.5	60.9	38.9	47.4	43.0
<b>Rutland</b>	238	227	465	69.7	71.8	70.8	58.8	58.6	58.7
<b>England</b>	<b>334,579</b>	<b>319,229</b>	<b>653,808</b>	<b>60.4</b>	<b>69.4</b>	<b>64.8</b>	<b>42.9</b>	<b>51.9</b>	<b>47.3</b>

Source: DCSF, (<http://www.dcsf.gov.uk/rsgateway/DB/SFR/s000826/index.shtml>, Table 18a)

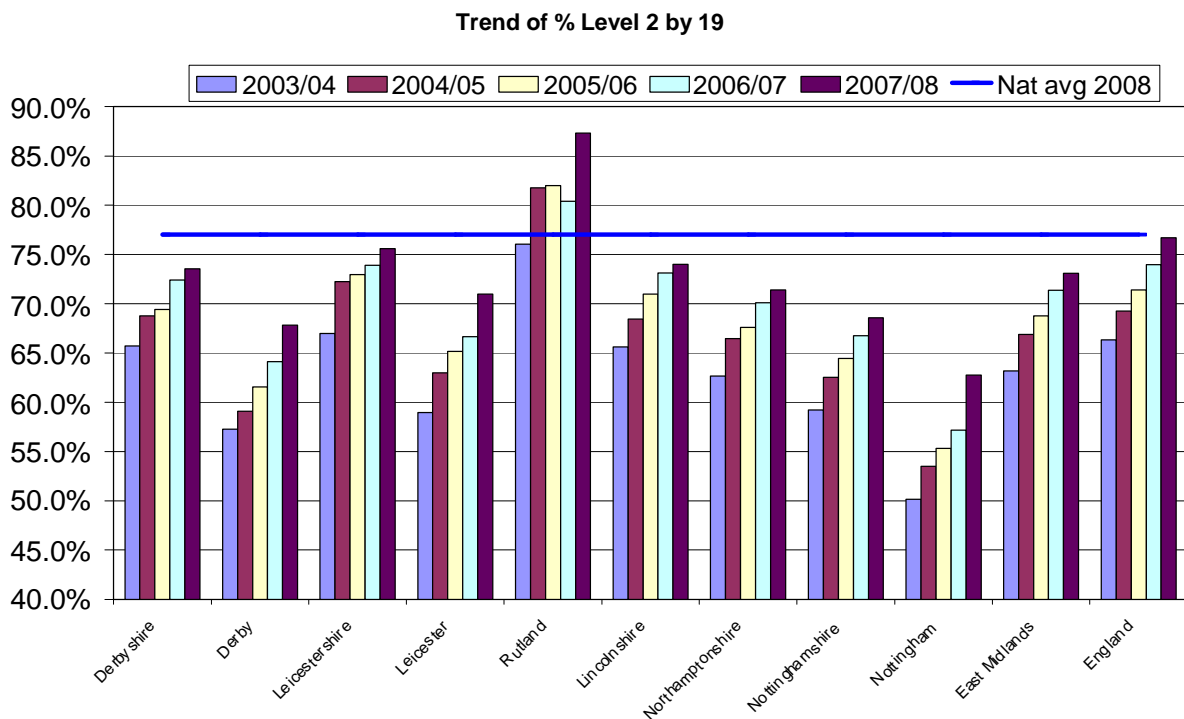
- 56 The proportion of young people in the East Midlands achieving 5 GCSEs A\*-C (the equivalent of a Level 2) remains below the national average. Results vary across the region, with Leicester and Nottingham showing lower levels of achievement.
- 57 Achievement by boys remains considerably lower than girls in most areas.
- 58 There has been a considerable rise in the proportion of young people who gain a Full Level 2 by 19 over the last five years in Derbyshire. The proportion has risen by nearly eight percentage points. This is below both the regional level of increase (10 percentage points) and the national change. However, Derbyshire remains one of the strongest performing areas in the region.

**Table 26: Progress towards PSA target NI 79 – achievement of Level 2 by age 19**

	Aged 19 at the end of 2003/04	Aged 19 at the end of 2004/05	Aged 19 at the end of 2005/06	Aged 19 at the end of 2006/07	Aged 19 at the end of 2007/08	Aged 19 at the end of 2008/09	Aged 19 at the end of 2009/10
LEA Name	by age 19	by age 19	by age 19	by age 19	by age 19	by age 18	by age 17
Derbyshire	65.7%	68.8%	69.4%	72.4%	73.6%	71.7%	65.0%
Derby	57.3%	59.1%	61.6%	64.1%	67.8%	65.9%	60.3%
Leicestershire	67.0%	72.3%	73.0%	73.9%	75.6%	74.4%	68.4%
Leicester	58.9%	63.0%	65.2%	66.7%	71.0%	67.6%	63.1%
Rutland	76.0%	81.8%	82.0%	80.4%	87.3%	83.4%	81.3%
Lincolnshire	65.6%	68.4%	71.0%	73.1%	74.0%	73.8%	68.5%
Northamptonshire	62.7%	66.5%	67.6%	70.1%	71.4%	70.8%	62.9%
Nottinghamshire	59.2%	62.5%	64.4%	66.8%	68.6%	66.4%	60.2%
Nottingham	50.2%	53.5%	55.3%	57.2%	62.8%	59.9%	55.0%
<b>East Midlands</b>	<b>63.2%</b>	<b>66.9%</b>	<b>68.8%</b>	<b>71.4%</b>	<b>73.1%</b>	<b>70.7%</b>	<b>64.3%</b>
<b>England</b>	<b>66.3%</b>	<b>69.2%</b>	<b>71.4%</b>	<b>74.0%</b>	<b>76.7%</b>	<b>74.8%</b>	<b>67.9%</b>

Source: DCSF Website: Level2andlevel3attainmentin each LEAApr2009.xls

**Figure 5: Percentage of young people with a Level 2 by age 19 in the East Midlands**



Source: DCSF Website: Level2andlevel3attainmentin each LEAApr2009.xls

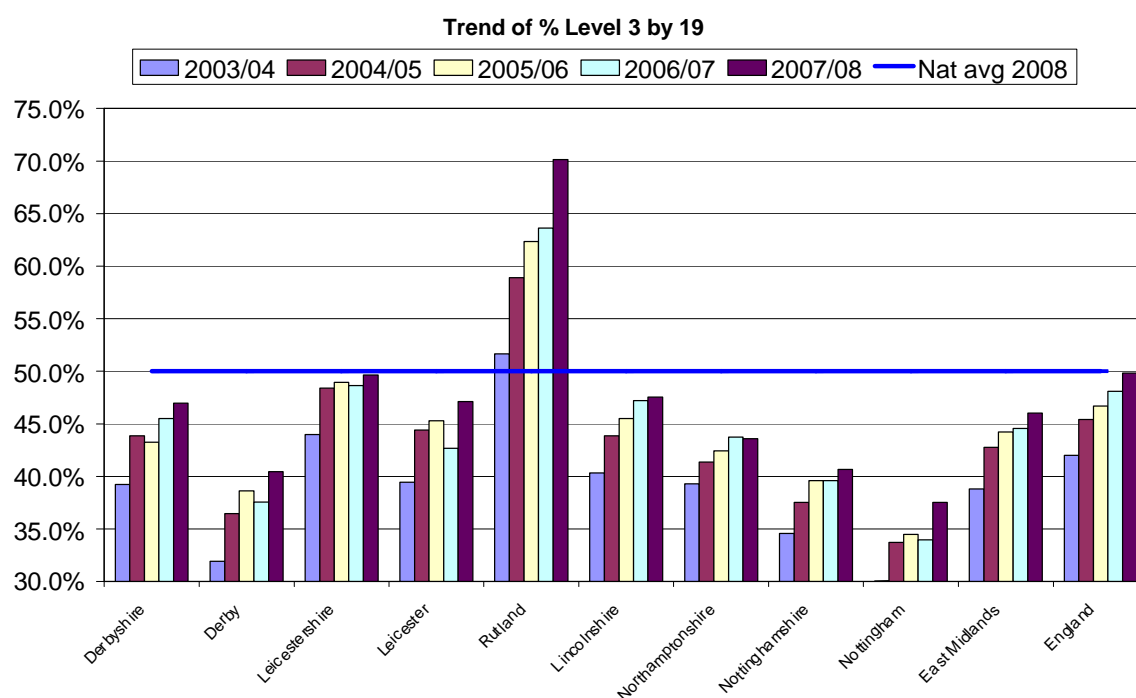
**Table 27: Progress towards PSA target NI 80 – achievement of Level 3 by age 19**

	19 in 2003/04	29 in 2004/05	19 in 2005/06	19 in 2006/07	19 in 2007/08	Aged 19 in 2008/09	Aged 19 in 2009/10
Region	by age 19	by age 19	by age 19	by age 19	by age 19	by age 18	by age 17
Derbyshire	39.2%	43.9%	43.3%	45.5%	47.0%	41.7%	16.8%
Derby	31.9%	36.5%	38.6%	37.6%	40.5%	35.2%	7.5%
Leicestershire	44.0%	48.4%	49.0%	48.6%	49.7%	45.7%	24.0%
Leicester	39.5%	44.4%	45.3%	42.7%	47.1%	37.9%	18.5%
Rutland	51.7%	58.9%	62.4%	63.6%	70.1%	61.2%	13.1%
Lincolnshire	40.3%	43.9%	45.5%	47.2%	47.6%	42.7%	15.8%
Northamptonshire	39.3%	41.4%	42.4%	43.8%	43.6%	40.3%	14.5%
Nottinghamshire	34.6%	37.5%	39.6%	39.6%	40.7%	35.6%	16.1%
Nottingham	30.0%	33.7%	34.5%	34.0%	37.5%	32.7%	12.1%
<b>East Midlands</b>	<b>38.8%</b>	<b>42.8%</b>	<b>44.2%</b>	<b>44.6%</b>	<b>46.0%</b>	<b>40.6%</b>	<b>16.3%</b>
<b>England</b>	<b>42.0%</b>	<b>45.4%</b>	<b>46.7%</b>	<b>48.1%</b>	<b>49.8%</b>	<b>43.4%</b>	<b>16.9%</b>

Source: DCSF Website: Level2andlevel3attainmentin each LEAApr2009.xls

59 There is a similar picture with the achievement of a Full Level 3 by 19. There has been a rise of nearly eight percentage points in the proportion of young people who gain a Full Level 3 qualification by 19 over the last five years in Derbyshire. This is a similar rate of improvement to both the regional (7.2%) and national (8.2%) change. However, as Figure 6 shows, Derbyshire remains below the national average.

**Figure 6: Percentage of young people with a Level 3 by age 19 in the East Midlands**



Source: DCSF Website: Level2andlevel3attainmentin each LEAApr2009.xls

## Part 3 - Provision within Derbyshire

60 This section is intended to show how post-16 providers (excluding those for Apprenticeships) are delivering against their contracts and the quality of their delivery. It is important information for planning the number of commissioned places in 2010/2011 since learning places will need to be planned for all those who choose to learn within Derbyshire's institutions.

### Further Education providers

#### FE participation

**Table 28: Number of 16-18 FE learners by level for each provider in Derbyshire LSC, 2006/07-2008/09**

Provider Name	2006/07					2007/08				
	Full Level 2	%	Full Level 3	%	Total Learners	Full Level 2	%	Full Level 3	%	Total Learners
Chesterfield College	974	27.6	1,360	38.6	3,526	958	25.4	1,600	42.5	3,766
Derbyshire County Council	2	0.7	9	3	300	12	4	19	6.3	301
South East Derbyshire College	354	23.6	489	32.5	1,503	315	28.2	469	41.9	1,118
Babington Business College Ltd (Derby)	4	19	3	14.3	21	2	40	0	0	5
University of Derby	207	26	399	50.2	795	254	28	514	56.7	906
Derbyshire LA Total	1,541	25.1	2,260	36.8	6,145	1,541	25.3	2,602	42.7	6,096
<b>East Midlands Total</b>	<b>12,662</b>	<b>23.7</b>	<b>18,559</b>	<b>34.7</b>	<b>53,446</b>	<b>12,724</b>	<b>22.6</b>	<b>20,188</b>	<b>35.9</b>	<b>56,249</b>

Provider Name	2008/09				
	Full Level 2	%	Full Level 3	%	Total Learners
Chesterfield College	946	24.4	1,749	45.1	3,879
Derbyshire County Council	-	-	-	-	-
South East Derbyshire College	267	28.8	407	43.9	927
Babington Business College Ltd (Derby)	-	-	-	-	-
University of Derby	285	31	495	53.8	920
Derbyshire LA Total	1,498	26.2	2,651	46.3	5,726
<b>East Midlands Total</b>	<b>12,951</b>	<b>23.1</b>	<b>21,755</b>	<b>38.9</b>	<b>55,980</b>

Sources: FE Learners Full Level 2 and Full Level 3 Drill Down 2005-06 - 2007/08 and 08/09 data - Dashboard 0809-0809 - LR FE - Learner.xls NB: Total Learners also includes learners who are not undertaking L2/L3 qualifications

61 Chesterfield College, South East Derbyshire College, and the University of Derby are some of the main FE delivery providers in Derbyshire LA funded by Derbyshire LSC.

62 Across the different Providers, the proportional split between the level of qualifications that learners are undertaking varies both between Providers and from year to year from 2006/07 – 2008/09. Compared to 2006/07, there has however, been an increase in the proportion of Full Level 3 learners in 2007/08 and 2008/09.

**Table 29: Number of 16-18 FE learners by provider in Derbyshire with a learning difficulty and/or disability (LLDD), 2007/08**

LA	Provider	LLDD	
		No.	% of Total Learners by Provider
Derbyshire	<b>Learner numbers</b>		
	Chesterfield College	460	12.2
	Derbyshire County Council	40	13.1
	South East Derbyshire College	143	12.8
	Babington Business College Ltd (Derby)	0	0.0
	University of Derby, High Peak College	150	16.3
<b>Derbyshire total – Overall Providers</b>		<b>2091</b>	<b>34.2%</b>

Source: 2007/08 ILR F05 returns (FE 0506-0708 Learner Drill down)

63 University of Derby, High Peak College had a slightly higher proportion of learners with learning difficulties and/or disabilities in 2007/08 compared to other FE providers in Derbyshire local authority area funded by Derbyshire LSC

**Table 30: Numbers of East Midlands 16-18 FE learners by their district of residence by provider in Derbyshire, 2007/08**

LA of provider	Derby City	Derbyshire	Leicester City	Leicestershire	Lincolnshire	Northamptonshire	Nottingham City	Nottinghamshire	Rutland	blank	Total East Midlands learners	Learners from outside of East Midlands	Full Total of learners
Chesterfield College	9	3,497	0	3	0	0	0	51	0	5	3,565	201	3,766
Derbyshire County Council	2	279	0	1	0	0	0	7	0	2	291	10	301
South East Derbyshire College	114	856	1	0	0	1	12	120	0	10	1,114	4	1,118
Babington Business College Ltd (Derby)	0	1	0	0	0	0	0	0	0	0	1	4	5
University of Derby, High Peak College	40	699	1	0	0	1	0	1	0	0	742	164	906
<b>Derbyshire providers Total</b>	<b>165</b>	<b>5,332</b>	<b>2</b>	<b>4</b>	<b>0</b>	<b>2</b>	<b>12</b>	<b>179</b>	<b>0</b>	<b>17</b>	<b>5713</b>	<b>383</b>	<b>6,096</b>

Source: 2007/08 ILR F05 returns (FE 0506-0708 Learner Drill down)

64 In terms of planning places for learning and learners within Derbyshire's providers, whilst by far the greatest proportion of learners come from within the county itself (87.4% in 2007/08), the Local Authority will need to ensure there are places available for learners from Derby City (2.7%) and Nottinghamshire (2.9%) and for small numbers of learners who come from other local authorities and other regions.

**Table 31: Percentage of East Midlands 16-18 FE learners by their district of residence by provider in Derbyshire, 2007/08**

LA of provider		Derby City	Derbyshire	Leicester City	Leicestershire	Lincolnshire	Northamptonshire	Nottingham City	Nottinghamshire	Rutland	blank	Total East Midlands learners	Learners from outside of East Midlands	Full Total of learners
	<b>Chesterfield College</b>	0.2	92.9		0.1				1.4		0.1	94.7	5.3	100
	<b>Derbyshire County Council</b>	1	92.5		0.3				2.3		0.7	96.7	3.3	100
	<b>South East Derbyshire College</b>	10.3	76.5	0.1			0.1	1.1	10.7		0.9	99.6	0.4	100
	<b>Babington Business College Ltd (Derby)</b>		20									20	80	100
	<b>University of Derby, High Peak College</b>	4.3	77.1	0.1			0.1		0.2			81.9	18.1	100
	<b>Derbyshire provider total</b>	2.7	87.4	0.03	0.1		0.03	0.2	2.9		0.3	93.7	6.3	100

Source: 2007/08 ILR F05 returns (FE 0506-0708 Learner Drill down)

**Table 32: Numbers of 16-18 FE learners by region of residence for providers in Derbyshire 2007/08**

	Chesterfield College		Derbyshire County Council		South East Derbyshire College		Babington Business College Ltd (Derby)		University of Derby, High Peak College		Derbyshire providers total	
	No.	%	No.	%	No.	%	No.	%	No.	%	No.	%
<b>East of England</b>	1	0.03							23	2.5	24	0.4
<b>East Midlands</b>	3,565	94.9	291	96.7	1,114	99.6	1	20.0	742	81.9	5713	93.7
<b>Greater London</b>	1	0.03							2	0.2	3	0.04
<b>North East</b>	1	0.03							1	0.1	2	0.04
<b>North West</b>		0.0	2	0.7					54	6.0	56	0.9
<b>South East</b>	1	0.03							16	1.8	17	0.3
<b>South West</b>									2	0.2	2	0.04
<b>West Midlands</b>	3	0.08	1	0.3	2	0.2	2	40.0	64	7.1	72	1.2
<b>Yorkshire &amp; Humberside</b>	184	4.9	1	0.3	2	0.2	2	40.0	1	0.1	190	3.1
<b>Not known</b>	10	0.3	6	2.0					1	0.1	17	0.3
<b>Total Learners</b>	<b>3,766</b>	<b>100</b>	<b>301</b>	<b>100</b>	<b>1,118</b>	<b>100</b>	<b>5</b>	<b>100</b>	<b>906</b>	<b>100</b>	<b>6096</b>	<b>100</b>

Source: 2007/08 ILR F05 returns (FE 0506-0708 Learner Drill down)

## FE Achievement

**Table 33: 2006/07 and 2007/08, Full Level 2 and Full Level 3 by Provider**

	2006/07					
	Full Level 2		Full Level 3		Total	
	Achievements	Success rate	Achievements	Success rate	Achievements	Success rate
Chesterfield College	629	69.7%	539	69.8%	4,622	75.6%
Derbyshire County Council	0	0.0%	1	14.3%	261	68.1%
South East Derbyshire College	265	69.6%	162	62.8%	2,886	71.9%
University of Derby, High Peak College	195	75.9%	110	59.5%	806	70.5%
East Midlands average	7,587	69.6%	4,905	64.3%	79,184	75.8%

	2007/08					
	Full Level 2		Full Level 3		Total	
	Achievements	Success rate	Achievements	Success rate	Achievements	Success rate
Chesterfield College	680	73.8%	659	74.6%	5,102	76.9%
Derbyshire County Council	1	16.7%	2	22.2%	234	65.5%
South East Derbyshire College	255	70.2%	200	68.7%	2,515	72.1%
University of Derby, High Peak College	195	73.0%	209	72.6%	897	73.5%
East Midlands average	9,050	74.0%	6,638	74.0%	90,116	78.9%

Source: 2007/08 ILR F05 returns (FE 0506-0708 Success rates drill down)

## FE funding

- 65 16 to 18 funding in Derbyshire has been increasing over the past three years. However, in 2008/09 the LSC introduced its new Demand Led Funding methodology and this was applied to the allocations process for funding FE provision in that year. For this reason, direct comparisons are not possible between 2007/08 funding levels and those in 2008/09. Further information about the Demand Led Funding methodology is available via the LSC web site (<http://www.lsc.gov.uk/providers/funding-policy/demand-led-funding/>).

**Table 34: Changes to 16-18 FE Funding: Derbyshire providers**

Provider	2006/07	% change on previous year	2007/08	% change on previous year	2008/09*
Chesterfield College	£15,032,262	4.2	£16,775,367	11.6	£15,899,436
Derbyshire County Council	£121,272	-7.3	£139,216	14.8	£120,111
South East Derbyshire College	£5,712,552	13	£5,337,241	6.6	£4,605,219
University of Derby, High Peak College	£3,260,105	14.0	£3,784,619	16.1	£3,597,515
Derbyshire provider total	£24,126,191	7.3	£26,036,442	7.9	£24,222,281

Source: 2007/08 ILR F05 returns (FE 0506-0708 Learner Drill down);\* LSC 2008/09 16-18 funding allocations

## School Sixth Forms

### School Sixth Form Participation

**Table 35: Numbers of Year 12-14 students in Derbyshire School Sixth Forms, 2005/06-2008/09**

	2005/06	2006/07	2007/08	2008/09
Swanwick Hall School	200	201	224	246
Mortimer Wilson School	68	71	102	121
Tupton Hall School	267	304	341	359
The Long Eaton School	169	158	210	230
Wilsthorne Business and Enterprise College	102	148	138	141
New Mills School and Sixth Form Centre	159	154	183	167
Aldercar Community Language College	0	0	0	86
Eckington School	212	227	226	226
Ilkeston School	112	147	206	170
Kirk Hallam Community Technology College	0	0	0	57
Highfields School	257	242	249	254
Glossopdale Community College	252	284	277	294
Newbold Community School	137	146	166	152
Brookfield Community School	305	308	300	355
Queen Elizabeth's Grammar School	204	201	206	221
Anthony Gell School	111	113	103	109
Dronfield Henry Fanshawe School	341	318	321	330
Buxton Community School	201	196	191	196
Netherthorpe School	215	225	193	246
The Ecclesbourne School	313	332	344	340
Belper School	199	225	255	243
John Port School	316	343	363	339
Heanor Gate Science College	164	205	205	201
Friesland School	161	193	212	235
The Pingle School	166	174	162	176
Lady Manners School	295	310	325	353
St Mary's Catholic High School	249	268	263	263
Mill Hill School	161	149	148	124

Source: School Sixth Form Census Data

## School Sixth Form achievement

**Table 36: A Level point scores per candidate and per entry by provider in Derbyshire, 2006 - 2008**

	Average point score per student			Average point score per examination entry		
	2006	2007	2008	2006	2007	2008
<b>Local Authority Average</b>	<b>714.2</b>	<b>740.1</b>	<b>752.3</b>	<b>201.6</b>	<b>202.7</b>	<b>203.9</b>
<b>LSC Average</b>	<b>697.2</b>	<b>718.2</b>	<b>737.3</b>	<b>202.1</b>	<b>202.4</b>	<b>204.1</b>
<b>England Average</b>	<b>721.5</b>	<b>731.2</b>	<b>740</b>	<b>206.2</b>	<b>207.5</b>	<b>209.4</b>
Abbotsholme School	782	624.4	860.5	197.6	212.1	224.5
Alfreton Grange Arts College	610.4	581.4	700.5	164.2	159.7	179.6
Anthony Gell School	810.8	733	771.2	211	198	209.9
Belper School	734.2	752.3	790.4	197	196.8	192.6
Brookfield Community School	768.2	841.1	790.3	205.1	211.2	205.7
Buxton Community School	739.2	728.4	745.4	211.2	209.1	208.2
Chesterfield College	549.3	613.3	661.7	202.2	203.4	205.6
Dronfield Henry Fanshawe School	766.5	820.5	812.2	188.4	198.2	197.7
The Ecclesbourne School	850.8	872.2	889.9	219.7	226.3	227.9
Eckington School	722	741.2	662.7	187.4	194	174.1
Friesland School	879.2	849.7	922.7	202.8	198.2	204.1
Glossopdale Community College	646.7	608	644	204.8	199.4	200.8
Hearon Gate Science College	778.9	793.8	677.6	198.3	203.2	196.6
Highfields School	872.8	926.2	863.5	217.3	217.1	211.7
Ilkeston School: Specialist Arts College	533.9	524.2	687.1	186.9	184.2	204.6
John Port School	738.7	653.4	670.3	210.3	209.5	214.2
Lady Manners School	822.2	920.5	890.4	200.5	213.4	206.4
The Long Eaton School	715	815.8	815.8	181.2	195.2	172.3
Mill Hill School	715.5	715.7	697.6	188.4	183.4	186.8
Mount St Mary's College	718.9	733.2	692.6	224.4	222	216.3
Netherthorpe School	784.1	746.8	809.7	199.5	190	200.1
New Mills School Business & Enterprise College	593.2	648.2	606.2	184.7	194.8	194.7
Newbold Community School	813.4	844.8	815.7	186.4	194.6	192.2
Ockbrook School	829.8	824.3	947.3	239.5	246.2	252.6
The Pingle School	715.6	703.3	824.4	197.2	187.5	196.7
Queen Elizabeth's Grammar School	890.7	1000	965.3	204.2	220.9	218
Repton School	909.1	933	901.4	242	249.6	246.3
St Mary's Catholic High School	976.9	915	981.3	227.8	217.7	228.9
South East Derbyshire College	547.7	625.4	637.3	188.4	191.1	195.4
Swanwick Hall School	694.3	719.2	684.3	181.2	183.1	169
Trent College	796.8	783.2	823.7	226.6	226.3	235.4
Tupton Hall School	710.1	685	697.9	213.9	206.4	216.7
Wilsthorpe Business and Enterprise College	603.5	642.7	557.4	194.5	188.4	189.2

Source: DCSF, (<http://www.dcsf.gov.uk/performance/tables/>).

## School Sixth Form funding

- 66 Only 2008/09 funding information is available at this time. More detail, including 2009/10 funding allocations figures will be available in the next phase of reports.

**Table 37: 2008/09 School Sixth Form funding in Derbyshire**

School Sixth Form	2008/09 Total funding allocation
Swanwick Hall School	£1,161,377
Alfreton Grange Arts School	£516,384
Tupton Hall School	£1,639,528
The Long Eaton School	£1,042,563
Wilsthorpe Business and Enterprise College	£536,004
New Mills School and Sixth Form Centre	£810,472
Aldercar Community and Language College	£392,334
Eckington School	£1,129,549
Ilkeston School	£847,477
Kirk Hallam Community Technology College	£390,840
Highfields School	£1,231,139
Glossopdale Community College	£1,352,404
Newbold Community School	£869,332
Brookfield Community School	£1,545,725
Queen Elizabeth's Grammar School	£1,027,768
Anthony Gell School	£539,839
Dronfield Henry Fanshawe School	£1,550,594
Buxton Community School	£1,026,150
Netherthorpe School	£968,164
The Ecclesbourne School	£1,633,013
Belper School	£1,238,945
John Port School	£1,499,088
Heanor Gate Science College	£1,106,366
Friesland School	£1,182,211
The Pingle School	£775,827
Lady Manners School	£1,566,464
St Marys Catholic High School	£1,231,735
Mill Hill School	£815,474
<b>Derbyshire Total</b>	<b>£29,626,767</b>

Source: 2008/09 LSC School Sixth Form funding allocations

## Apprenticeships

### Apprenticeship participation

- 67 This section provides information on the number of learners participating on Apprenticeships within the Derbyshire LSC area (including the City) and the Providers funded to deliver that learning. The data presents detailed information about those Providers that are funded by Derbyshire LSC. However, some of these Providers may not *deliver* the learning in the Derbyshire area and due to the complexities in how this data is constructed it is not possible at this stage to provide a breakdown of the delivery location of each Provider for individual learners.

**Table 38: Number of 16-18 learners undertaking Apprenticeships with Providers funded by Derbyshire LSC, 2007/08 and 2008/09**

Providers	2007/08				Total
	Apprenticeship		Advanced Apprenticeship		
	No.	%	No.	%	
Academy Of Hair & Beauty Limited	55	3.1	3	0.3	57
Access Training (East Midlands) Ltd	14	0.8	7	0.9	21
Acorn Training Consultants Limited	13	0.8	9	1.1	23
Babington Business College Limited	94	5.4	20	2.5	114
Burton College	89	5.1	61	7.7	151
Carter & Carter Group Plc	8	0.4	0	0	8
Chesterfield College	174		61		234
Dart Limited	0		0		0
Dales Agriculture & Rural Training Limited	63	3.6	13	1.7	77
Derby College	338	19.3	84	10.5	421
Derbyshire And Nottinghamshire Chamber Of Commerce And Industry	98	5.6	41	5.1	138
Heart Of England Training Limited	0	0	0	0	0
JHP Group Limited	43	2.5	10	1.2	53
Kaplan Financial Limited	0	0	0	0	0
Mark Bremner	5	0.3	1	0.1	6
Millbrook Management Services Limited	29	1.7	9	1.1	38
National Council On Ageing	63	3.6	11	1.4	74
NLT Training Services Limited	60	3.4	93	11.7	153
Protocol Skills Limited	36	2	3	0.3	38
Rathbone Training	39	2.2	0	0	39
Rolls-Royce Plc	0	0	213	26.9	213
Sheffield Trainers Limited	184	10.5	29	3.6	213
South East Derbyshire College	65	3.7	5	0.6	70
Stephenson College	2	0.1	0	0	2
Stubbing Court Training Limited	26	1.5	13	1.6	39
Tamworth And Lichfield College	3	0.2	0	0	3
TBG Learning Ltd	24	1.4	7	0.9	31
Training Services 2000 Ltd	60	3.4	50	6.4	110
Triangle Training Ltd	20	1.2	1	0.1	21
University Of Derby	69	3.9	26	3.3	95
VT Training Plc	33	1.9	15	1.8	48
Webs Training Limited	46	2.6	10	1.3	56
<b>Total</b>	<b>1751</b>	<b>100</b>	<b>793</b>	<b>100</b>	<b>2544</b>

Providers	2008/09				
	Apprenticeship		Advanced Apprenticeship		Total
	No.	%	No.	%	
Academy Of Hair & Beauty Limited	54	3.3	5	0.6	59
Access Training (East Midlands) Ltd	15	0.9	3	0.4	18
Acorn Training Consultants Limited	10	0.6	5	0.5	15
Babington Business College Limited	79	4.8	24	2.9	103
Burton College	87	5.3	66	7.8	152
Carter & Carter Group Plc		0		0	
Chesterfield College	160	9.8	43	5.1	203
Dart Limited	53	3.3	13	1.6	67
Dales Agriculture & Rural Training Limited		0		0	
Derby College	310	18.9	109	12.9	419
Derbyshire And Nottinghamshire Chamber Of Commerce And Industry	92	5.6	42	4.9	134
Heart Of England Training Limited		0		0	
JHP Group Limited	38	2.3	17	2	56
Kaplan Financial Limited	1	0	1	0.1	2
Mark Bremner	13	0.8	6	0.7	19
Millbrook Management Services Limited	29	1.8	2	0.3	31
National Council On Ageing	75	4.6	15	1.8	90
NLT Training Services Limited	67	4.1	107	12.7	175
Protocol Skills Limited	23	1.4	2	0.2	25
Rathbone Training		0		0	
Rolls-Royce Plc	0	0	251	29.8	251
Sheffield Trainers Limited	178	10.9	17	2	195
South East Derbyshire College	36	2.2	6	0.7	42
Stephenson College	1	0.1	0	0	1
Stubbing Court Training Limited	35	2.1	12	1.4	46
Tamworth And Lichfield College	11	0.6	0	0	11
TBG Learning Ltd	18	1.1	2	0.2	20
Training Services 2000 Ltd	63	3.9	52	6.2	115
Triangle Training Ltd	71	4.3	4	0.5	75
University Of Derby	75	4.6	32	3.8	108
VT Training Plc		0		0	
Webs Training Limited	46	2.8	6	0.7	52
<b>Total</b>	<b>1638</b>	<b>100</b>	<b>842</b>	<b>100</b>	<b>2480</b>

Source: ILR - Employer Responsive Drill Downs 2008/09, Period 8 (March 2009), ILR - WBL and E2E 2007/08 Drill Downs, 'In Learning' Data. NB: The data shows an average of learners in a given month over a 12 month period undertaking an Apprenticeship.

68 Derby College, Rolls-Royce Plc, Burton College, Sheffield Trainers Limited, NLT Training Services Limited, Training Services 2000 Ltd, Babington Business College Limited, and the University of Derby were amongst some of the largest Providers delivering Apprenticeships funded by Derbyshire LSC

- 69 The table below provides a breakdown of Providers funded by Derbyshire LSC in 2007/08 that had learners with learning difficulties and/or disabilities undertaking Apprenticeships.

**Table 39: Number of 16-18 Apprenticeship learners with a learning difficulty and/or disability (LLDD), by Providers funded by Derbyshire LSC, 2007/08**

Provider	2007/08 - LLLD	
	No.	%
Academy Of Hair & Beauty Limited	0	0.0
Access Training (East Midlands) Ltd	4	3.3
Acorn Training Consultants Limited	4	3.3
Babington Business College Limited	7	4.9
Burton College	7	4.8
Carter & Carter Group Plc	1	1.0
Chesterfield College	1	0.7
Dales Agriculture & Rural Training Limited	9	6.8
Derby College	10	7.6
Derbyshire And Nottinghamshire Chamber Of Commerce And Industry	2	1.6
Heart Of England Training Limited	0	0.0
JHP Group Limited	4	3.2
Kaplan Financial Limited	0	0.0
Mark Bremner	1	0.6
Millbrook Management Services Limited	8	5.7
National Council On Ageing	6	4.7
NLT Training Services Limited	1	0.9
Protocol Skills Limited	1	0.4
Rathbone Training	4	3.2
Rolls-Royce Plc	21	15.6
Sheffield Trainers Limited	5	3.5
South East Derbyshire College	0	0.0
Stephenson College	0	0.0
Stubbing Court Training Limited	4	3.2
Tamworth And Lichfield College	0	0.0
TBG Learning Ltd	0	0.0
Training Services 2000 Ltd	15	11.1
Triangle Training Ltd	2	1.5
University Of Derby	8	5.6
VT Training Plc	3	2.1
Webs Training Limited	6	4.7
Derbyshire Total	134	100.0

Source: ILR - WBL and E2E 2007/08 Drill Downs, 'In Learning' Data. NB: The data shows an average of learners over a 12 month period undertaking an Apprenticeship

- 70 Providers with a higher proportion of learners with learning difficulties and/or disabilities are: Rolls-Royce Plc; Training Services 2000 Ltd and Derby College.

### Apprenticeship achievement

- 71 The table below presents overall 2007/08 success rates for Apprenticeship delivery by Providers funded by Derbyshire LSC.

**Table 40: 2007/08 Apprenticeship Framework Overall Success Rates, Providers funded by Derbyshire LSC**

Provider	Apprenticeships		Advanced Apprenticeships		Overall	
	Frameworks	Overall Success rate	Frameworks	Overall Success rate	Frameworks	Overall Success rate
Academy Of Hair & Beauty Limited	16	62%	4	100%	20	67%
Access Training (East Midlands) Ltd	9	82%	2	50%	11	73%
Acorn Training Consultants Limited	13	87%	7	88%	20	87%
Babington Business College Limited	92	92%	20	87%	112	91%
Burton College	24	49%	17	61%	41	53%
Chesterfield College	99	64%	46	68%	145	65%
Dales Agriculture & Rural Training Limited	35	80%	1	50%	36	78%
Derby College	110	65%	32	56%	142	63%
Derbyshire and Nottinghamshire Chamber Of Commerce And Industry	59	74%	23	70%	82	73%
JHP Group Limited	15	52%	0	0%	15	50%
Millbrook Management Services Limited	22	79%	6	100%	28	82%
National Council On Ageing	36	56%	1	50%	37	56%
NLT Training Services Limited	38	63%	3	60%	41	63%
Omnia Training Limited	1	100%	-	-	1	100%
Protocol Skills Limited	34	69%	0	0%	34	68%
Rathbone Training	27	54%	-	-	27	54%
Rolls-Royce Plc	-	-	33	87%	33	87%
Sheffield Trainers Limited	134	61%	24	65%	158	62%
South East Derbyshire College	30	77%	4	33%	34	67%
Stubbing Court Training Limited	18	72%	3	50%	21	68%
TBG Learning Ltd	17	63%	4	36%	21	55%
Training Services 2000 Ltd	51	94%	25	93%	76	94%
University Of Derby	26	58%	8	67%	34	60%
Webs Training Limited	20	80%	4	67%	24	77%
VT Training Plc	21	54%	5	71%	26	57%
<b>Derbyshire Total</b>	<b>947</b>	<b>68%</b>	<b>272</b>	<b>68%</b>	<b>1,219</b>	<b>68%</b>
<b>East Midlands Total</b>	<b>3,781</b>	<b>64%</b>	<b>952</b>	<b>66%</b>	<b>4,733</b>	<b>65%</b>

Source: ILR - WBL New Measures of Success Rates Drill Downs 2007/08

- 72 Derbyshire's overall success rate in 2007/08 was above the regional average (68% compared to 65%).
- 73 Of those Providers with a higher volume of successful Framework completions, the following had good success rates which were above both the local and regional average: Training Services 2000 Ltd (94%); Babington Business College Limited (91%); Dales Agriculture & Rural Training Limited (78%) Derbyshire and Nottinghamshire Chamber of Commerce and Industry (73%) Rolls Royce Plc (87%) and Protocol Skills Ltd (68%).

## Apprenticeship funding

**Table 41: Funding for Derbyshire LSC Apprenticeship providers 2008/09**

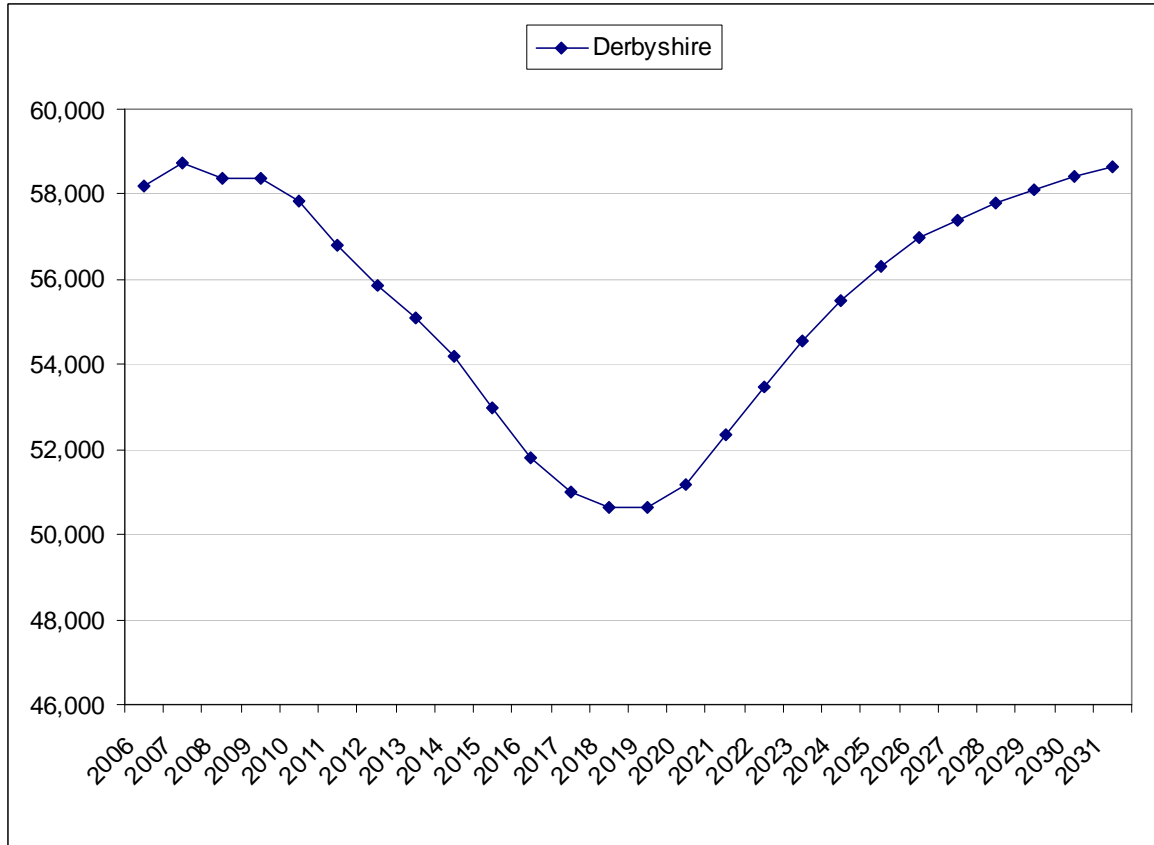
Apprenticeship training providers	Original Contract value 2008/09
Academy Of Hair & Beauty Limited	£150,004.17
Access Training (East Midlands) Ltd	£70,108.52
Acorn Training Consultants Limited	£122,700.89
Babington Business College Limited	£518,524.51
Burton College	£692,253.24
Chesterfield College	£971,929.15
Dart Limited	£209,710.59
Derby College	£1,405,008.66
Derbyshire And Nottinghamshire Chamber Of Commerce And Industry	£565,979.50
JHP Group Limited	£246,975.30
Kaplan Financial Limited	£73,565.09
Mark Bremner	£75,639.97
Millbrook Management Services Limited	£124,183.78
National Council On Ageing	£421,955.82
NLT Training Services Limited	£672,511.84
Protocol Skills Limited	£188,952.82
Rathbone Training	£159,162.99
Rolls-Royce Plc	£1,240,613.02
Sheffield Trainers Limited	£997,124.77
South East Derbyshire College	£220,226.19
Stephenson College	£112,821.65
Stubbing Court Training Limited	£181,925.04
Tamworth And Lichfield College	£58,394.02
TBG Learning Ltd	£97,865.45
Training Services 2000 Ltd	£603,044.12
Triangle Training Ltd	£417,801.96
University Of Derby	£357,384.46
VT Training Plc	£197,656.20
Webs Training Limited	£348,956.05
West Nottinghamshire College	£313,844.16
<b>Derbyshire LSC total</b>	<b>£11,816,823.93</b>

Source: AMPS – Employer Responsive, Original Contract value. This may not be the final funding figure for the year depending on contract performance.

## Part 4 - Area Context

### 14-19 Population information

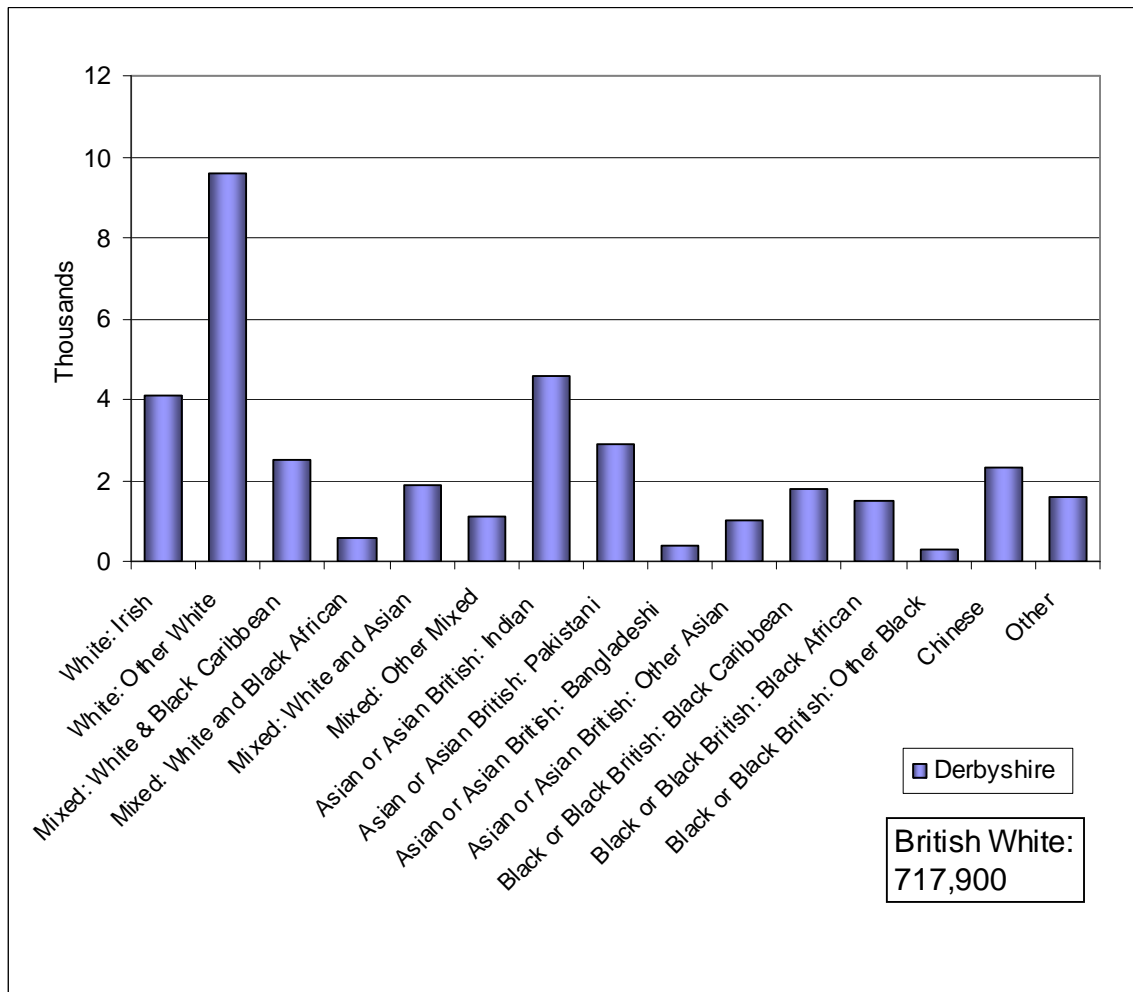
Figure 7:14-19 population projections for Derbyshire, 2006-2030



Source: ONS 2006-based population projections

- 74 From peak levels of 14-19 population in 2006-09, Derbyshire will see a steady decline until 2018-19. The 2018-19 level will be around 13% lower. After 2019 the population will start to increase, returning to 2006-08 levels by 2030-31.

**Figure 8: Estimate of resident population by ethnic group (all ages), 2006**

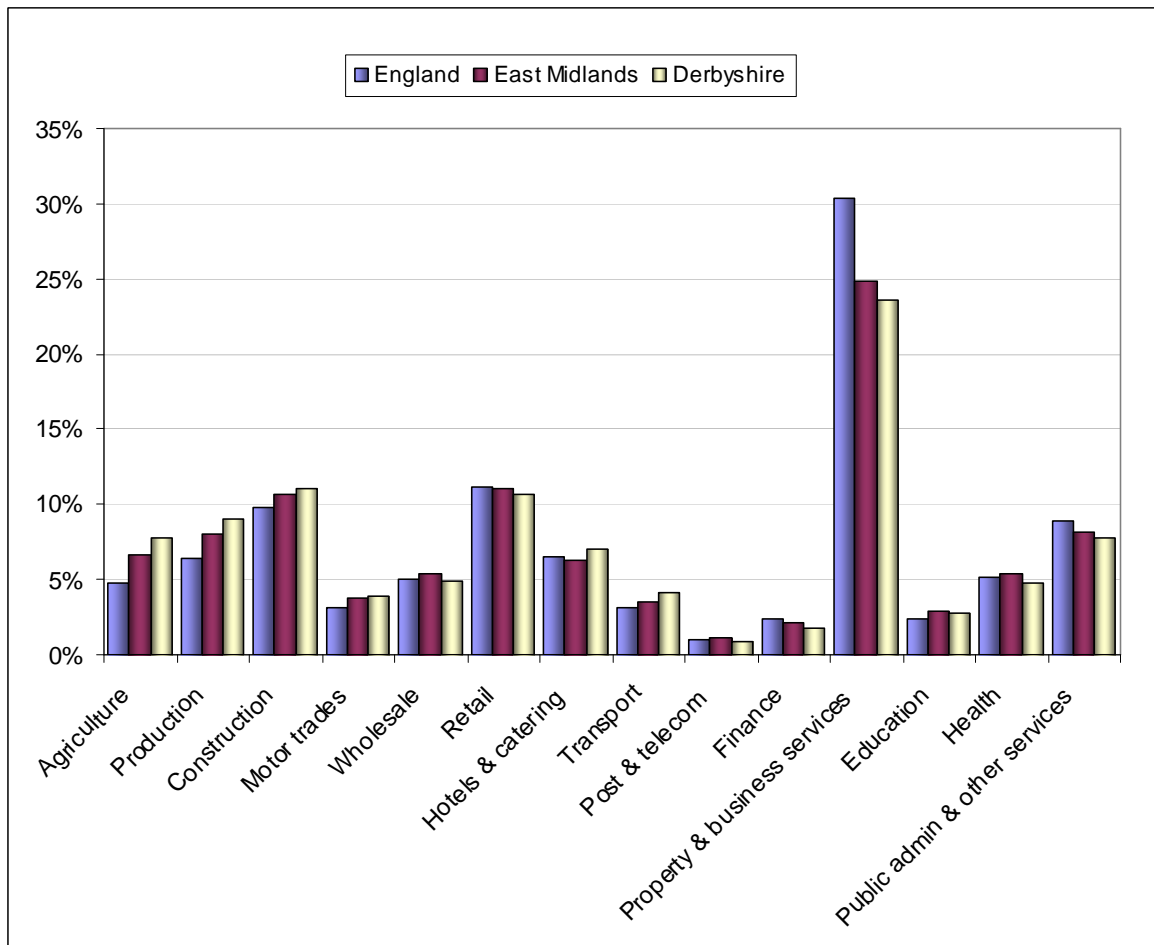


Source: ONS Estimates of resident population by ethnic group (experimental statistics) white British is not shown in the columns above, but the figure is quoted for completeness.

75 White British forms the largest ethnic group in Derbyshire, in total nearly 720,000 people. The two largest non-white communities in Derbyshire are Indian (0.6%) and Pakistani (0.4%). Overall 3.0% of the population are non-white.

## Employers and Employment in Derbyshire

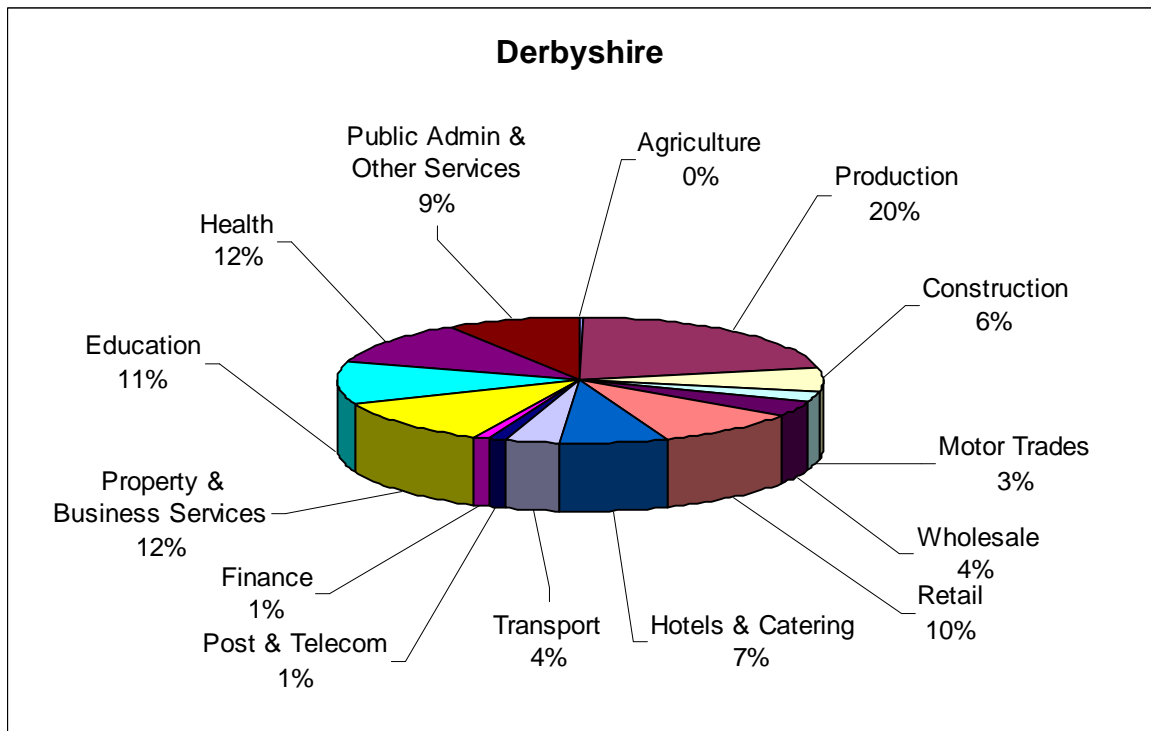
Figure 9: Distribution of business by broad industrial group



Source: Inter Departmental Business Register (IDBR) 2008

- 76 The largest sectors are 'Property & Business Services' (23.6%), 'Construction' (11.0%), and 'Retail' (10.7%), which are broadly in line with East Midlands largest sectors. However the actual percentage for 'Property & Business Services' is 1.2% and 6.7% below Regional and England levels respectively.

**Figure 10: Employees in Derbyshire by sector, 2007**



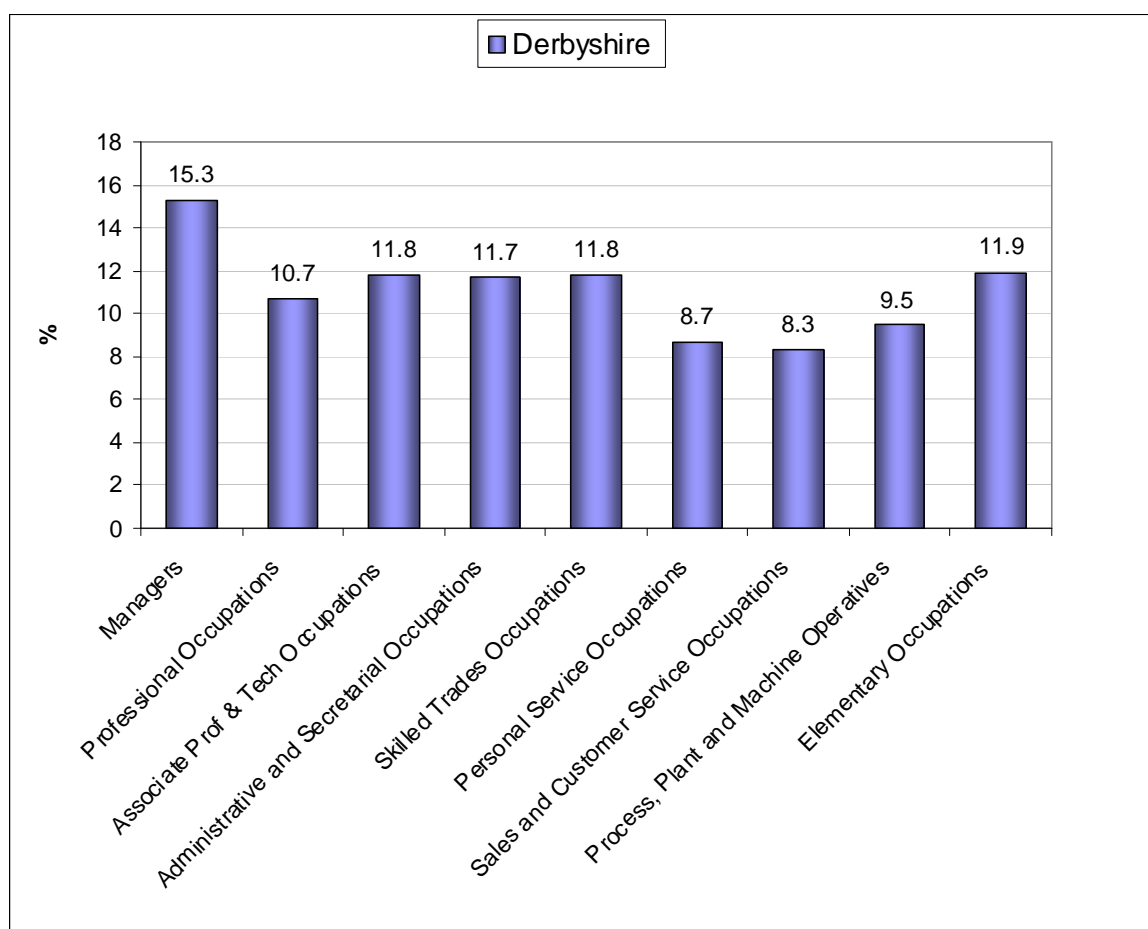
Source: *Annual Business Inquiry (ABI)*<sup>6</sup> (2007)

- 77 The sectors employing the largest numbers of people are 'Production' (20%, 58700 persons), 'Property & Business Services' (12%, 31600 persons), 'Health' (12%, 31600 persons) and 'Education' (11%, 29600 persons).

<sup>6</sup> The Annual Business Inquiry (ABI) shows the distribution of employees by industry. The ABI is a survey of a sample of businesses within the IDBR. Therefore there are sampling errors as with any survey and results should be viewed as a guide not an absolute. All numbers rounded to nearest 100.

## Skills

Figure 11: Employment by occupation group, 2007/08



Source: Annual Population Survey (APS), July 2007-June 2008

- 78 “Managers’, ‘Professional Occupations’ and ‘Associate Professional and Technical’ are grouped together as ‘Higher Occupations’. ‘Administrative and Secretarial’, ‘Skilled Trades Occupations’, ‘Personal Service Occupations’ and ‘Sales and Customer Service Occupations’ are grouped together as ‘Intermediate Occupations’. ‘Process, Plant and Machine Operators’ and ‘Elementary Occupations’ are grouped together as ‘Lower Occupations’. Recent and ongoing change is moving away from ‘Lower’ occupations towards ‘Intermediate’ and ‘Higher’ occupations.
- 79 ‘Managers’ are now the largest single group at 15.3%. Higher occupations have increased to almost the same percentage as Intermediate occupations as ‘Lower’ occupations continue to fall.

**Table 42: Proportion of 19-59/64 population with qualifications by level, 2007**

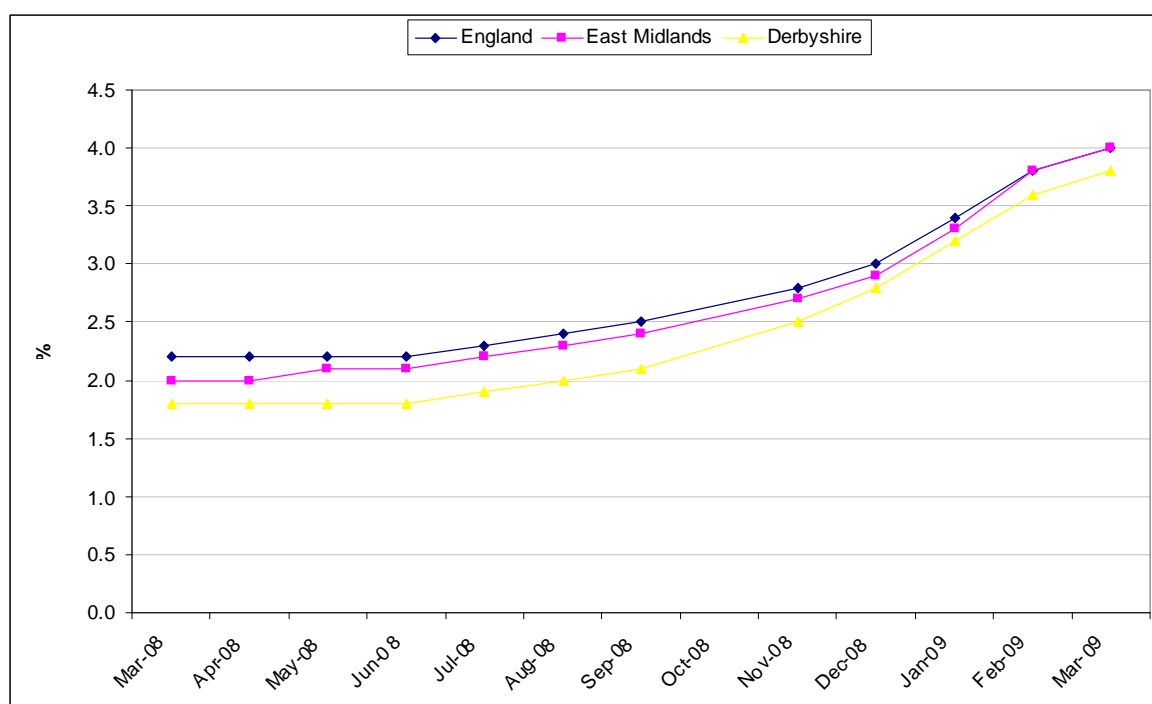
	Qualified to at least Level 4	Qualified to at least Level 3	Qualified to at least Level 2	Qualified lower than Level 2	Number (000s) with a qualification below Level 2	% with no qualifications	Number (000s) with no qualifications
Derbyshire	27.4%	47.2%	69.3%	18.7%	81	12.0%	52
Derby City	27.1%	44.5%	62.5%	20.5%	28	17.0%	23
East Midlands	27.3%	47.0%	67.2%	19.7%	499	13.1%	331

Source: Annual Population Survey 2007, <http://www.dcsf.gov.uk/rsgateway/DB/STA/t000809/Table1.xls>

80 Derbyshire compares favourably with the region in terms of the qualification levels of its residents, particularly those qualified to at least Level 2. Derbyshire also fairs better than the region in the percentage of those with no qualifications (12% against 13.1%).

## Unemployment

**Figure 12: Job Seekers Allowance Claimants Rates**



Source: Jobcentre Plus via Office of National Statistics (ONS)

81 Over the last year Derbyshire has tracked a little below the National and Regional claimant levels. The March 09 figure is 3.8% (representing 17,400 persons).

## **Part 5 - Sub-Regional Group (SRG) overview**

- 82 This section is intended to bring together issues from each local authority within the Sub-Regional Group to inform the planning discussions by presenting a more rounded picture.
- 83 Participation in education of 16 and 17 year olds has needs to increase to meet national averages and in line with the raising of the participation age. The drop out between 16 and 17, although a national trend, needs to be addressed to maintain participation levels.
- 84 Achievement at both Level 2 and Level 3 has shown improvement over the last few years, and this rate of increase needs to be maintained to exceed regional and national averages.
- 85 Apprenticeship participation has been decreasing and has been particularly badly affected by the recession. However, completion rates in Derbyshire are good and need to remain so to keep above regional averages. This contrasts with the picture in Derby City where completion rates fell at a much greater rate than regionally.
- 86 There is a similar difference between Derbyshire and Derby City in the average A-Level point score per student. While the average point score per student in Derbyshire has improved significantly to now stand above both regional and national averages, in Derby City this has not increased to the same extent.
- 87 FE success rates at Level 2 and 3 for 16-18 year olds living in the area need improvement.

Learning and Skills Council  
East Midlands

17A Meridian East  
Meridian Business Park  
Leicester, LE19 1UU

Tel: 0845 019 4170  
Fax: 0116 228 1801

<http://www.lsc.gov.uk/regions/EastMidlands>

© LSC June 2009  
Published by the Learning and Skills Council

Extracts from this publication may be reproduced for non-commercial educational or training purposes on condition that the source is acknowledged and the findings are not misrepresented.

This publication is available in electronic form on the Learning and Skills Council website: [www.lsc.gov.uk](http://www.lsc.gov.uk)

If you require this publication in an alternative format or language, please contact the LSC Help Desk: 0870 900 6800

Publication reference: LSC-P-EM-420000