

i For information

>lsc

Leading learning and skills

16–19 Strategic Analysis for Leicester City

June 2009

Of interest to Local Authorities and other
Partners and Stakeholders involved in
14-19 planning

16-19 Strategic Analysis Leicester City

15 June 2009

Table of Contents:

Introduction	3
Background and issues for consideration.....	5
Part 1 - 16-18 Resident learner participation.....	7
Analysis of participation by learning type 2007/08.....	7
Further Education.....	7
Apprenticeships.....	9
School Sixth Forms	12
Entry to Employment (E2E).....	15
September Guarantee	18
Travel to learn patterns.....	19
Further Education.....	19
Schools Sixth Forms	22
16-18 resident learner achievement	23
FE Achievements.....	23
Apprenticeship Framework Completions.....	24
School Sixth Forms	24
Part 2 - Progress to PSA targets at 19	26
Part 3 - Provision within Leicester City	29
Further Education providers.....	29
FE participation	29
FE Achievements.....	33
FE Funding.....	34
School Sixth Forms.....	35
School Sixth Form participation.....	35
School Sixth Forms Achievement	35
School Sixth Form funding	36
Apprenticeships	37
Apprenticeship participation	37
Apprenticeship achievements	40
Apprenticeship funding.....	41
Part 4 - Area Context.....	42
14-19 Population information	42
Employers and employment in Leicester City	44
Skills	46
Unemployment.....	47
Part 5 - Sub-Regional Group (SRG) overview	48

Introduction

This 16-19 report is the first in a series of three to be published for Local Authorities over the next 3 months. The purpose of the reports is to provide, in the Machinery of Government Transition year, sufficient details of 16-19 provision and learners for Local Authorities to be able to:

- a) complement their existing strategic planning for 14-19 in the context of economic and employment information for their area
- b) develop detailed commissioning plans at LA and Strategic Regional Group levels
- c) Focus on specific areas for improvement in their planning
- d) Understand the provision accessed by their residents
- e) Understand the scope and quality of the provision for those learners, wherever they are resident who choose to learn within providers situated within the LA's boundaries.

What the Series One report contains

Series one report contains sufficient detail of provision accessed by residents to enable points (a), (c) and (d) above. In addition, by its focus on providers it also allows LAs to achieve points (b) and (e) above.

Series Two and Three reports

These reports will provide more detail of specific provision and groups of learners, such as those with Learning Difficulties and/or Disabilities (LDD) and those on Entry to Employment (E2E) programmes. In addition details of the curriculum offered in 16-18 institutions and the characteristics of learners studying those curricula will be provided. It is intended that the series two and three reports will aid LAs in particular in the execution of points (b) and (c) above by increasing their understanding of need and provision. Planned final volumes of learners and funding for 2009/10 for the relevant providers in each Local Authority will also be part of series two reports.

Data for the reports

Where relevant data is published nationally by the Department for Children, Schools and Families, such as that in statistical first reports, or by the Office for National Statistics, this data has been used. Much of the remaining data comes from submissions on the Individual Learner Record (ILR) made by providers to the LSC, from school census data, or from internal LSC systems designed to deal with allocations of funding to providers and measuring targets. Since data comes in at specific times of the year for FE and schools, only whole year data is provided for these types of institutions. This restricts these data sets to 2005/06 to 2007/08. For E2E and Apprenticeships, data arrives monthly, so in-year (2008/09) data is provided in these cases.

In January, 2007, the LSC consulted with the sector on a new funding approach in the document *Delivering World-class Skills in a Demand-led System*. Following this consultation the LSC's funding approach changed significantly for 2008/09. This has had an effect on how the data is collated and aggregated together in

2008/09. Therefore it is urged that when making comparisons across these two years this change is taken into consideration.

Accessing the reports and information

The reports will be made available via the LSC's external website. Where information is confidential a separate file will be provided for LAs on disc. From July 2009, an updated data website will be available for LAs.

Background and issues for consideration

- 1 Employment in Leicester City is below regional averages and is the lowest rate of employment in the region. The level of economic inactivity (27.2%) and unemployment (11.9) are amongst the highest in the region and above the national average.¹ The largest proportion of employers is to be found in property and business services, retail and production. Compared to the region as a whole, there are fewer employers in the sectors of property and business services and construction (see Figure 9). The greatest proportion of employees is to be found in health, production and property and business services. Whilst over 15% of employers in the city are in the retail sector, this sector only employs 8% of the total number of employees.
- 2 Leicester City has a higher proportion of workers employed in process, plant and machine operative occupations and in elementary roles than in the region as whole. There are also slightly smaller proportions of workers employed as managers and professional occupations than the region as a whole.
- 3 The levels of qualification of the working age population (19-59-64) in Leicester City are poorer than those in the region of the region. However, whilst proportions remain below regional and national averages there have been improvements since 2004. 58% of the city's population is qualified to at least Level 2 and 39% Level 3 compared with 67% and 47% respectively for the East Midlands. 21% of Leicester City residents hold a qualification below a Level 2 and a further 21% have no qualifications at all, both figures above the regional average.
- 4 The 14-19 cohort peaked in 2006 and now is forecast to continue to decline until 2016/17. Participation in education and training is strong in the City and is above both regional and national levels. 89% were in education and training in 2006 post 16 compared to 82% nationally. This proportion has remained fairly stable over the past 3 years. There are significant differences between participation at 16 and at 17. Participation fell off by eight percentage points between the ages of 16 and 17 in 2006, similar to the national trend.
- 5 Fewer young people in Leicester City choose to learn in a school sixth form, and the greatest proportion attend learning at Sixth Form Colleges and other FE in the City. Participation in Apprenticeships had been decreasing but figures for 2008/09 so far show a slight increase despite the economic downturn.
- 6 Achievement of Level 2 by 16 is below national and regional averages and is the lowest in the region at 55.3% of 15 year old pupils achieving 5 A*-C grades in 2007/08. The picture is slightly improved when English and Maths are taken into account but Leicester City still shows one of the lowest levels of achievement at 39.7% compared with a regional average of 46.8%.
- 7 For Levels 2 and 3 at 19 (PSA target), Leicester City has shown major improvements in the proportions of young people achieving these qualifications by 19, although the city remains below regional and national

¹ Annual Population Survey October 2007-September 2008

averages. At Level 2, the rate of increase (12.1 percentage points) was above both regional and national rates of change (7 and 8 percentage points respectively). At Level 3, the rate of change was close to the regional rate of change but below national levels. Despite this, the city remains well below the national average for both indicators.

- 8 Last year, the quality of provision in Leicester City remained amongst the best in the region, particularly so for success rates at Level 3.
- 9 Apprenticeship completion rates increased between 2006/07 and 2007/08 at both levels of the programme. This was against the regional trend so shows a particular success in Leicester City.

Issues for consideration/improvement:

- Despite considerable improvements in the achievements of young people at 19, the City remains well below national averages. Maintaining the rate of change will be a challenge, but necessary.
- Participation of young people at 16 and 17 remains strong and provides a good base for the raising of the participation age to 18 legislative changes. However, drop out remains at 17 and this will need to improve.
- FE success rates have improved to be above regional averages and these will need to be maintained across all providers.

Part 1 - 16-18 Resident learner participation

- 10 This section is intended to show where the young people living within Leicester City are learning and to highlight any issues relating to demand for learning within the area.

Analysis of participation by learning type 2007/08

Further Education

Table 1: East Midlands 16-18 FE learners by LA of residence

Learner LEA	2006/07 (full year)		2007/08 (full year)		2008/09 (as at March 2009)	
	Learners	% of East Midlands	Learners	% of East Midlands	Learners	% of East Midlands
Derby City	3,401	5.9%	3,575	6.0%	3,406	5.7
Derbyshire	9,644	16.8%	9,708	16.3%	9,746	16.2
Leicester City	6,637	11.5%	6,850	11.5%	7,016	11.7
Leicestershire	6,856	11.9%	7,098	11.9%	6,996	11.6
Lincolnshire	8,144	14.2%	8,400	14.1%	9,011	15.0
Northamptonshire	8,186	14.2%	8,424	14.1%	8,366	13.9
Nottingham City	4,811	8.4%	5,082	8.5%	4,965	8.3
Nottinghamshire	9,336	16.2%	9,702	16.3%	10,136	16.8
Rutland	523	0.9%	562	0.9%	525	0.9
(Unknown based on Postcode)			237	0.4%		
Total East Midlands	57,538	100.0%	59,638	100.0%	60,167	100.0%

Source: 2007/08 ILR F05 returns (FE 0506-0708 Learner Drill down)

- 11 The 16-18 population resident in Leicester City who are engaged in learning in Further Education has risen steadily over the last three years. In 2006/07 there were 6637 learners studying in Further Education. This rose to 7098 in 2007/08. This was a growth of 6.5 %, which is above the East Midlands figure of 3.6%. In 2007/08, Leicester City residents represented 11.5% of all 16-18 year old FE learners within East Midlands.

Table 2: Leicester City 16-18 FE learners by gender

	Year	Female		Male	
Leicester City	2006/07	3,377	50.9%	3,260	49.1%
	2007/08	3,433	50.1%	3,417	49.9%
East Midlands	2006/07	29,226	50.8%	28,312	49.2%
	2007/08	30,217	50.7%	29,421	49.3%

Source: 2007/08 ILR F05 returns (FE 0506-0708 Learner Drill down)

- 12 Using LSC data returns, the female/male gender split in FE learners in 2006/07 and 2007/08 was 50.9% to 49.1% and 50.1% to 49.9% respectively. This is broadly comparable to the regional averages. The data returns are comparable with Office of National Statistics (ONS) Mid 2007 Population Estimates.

Table 3: Leicester City 16-18 FE learners by ethnicity

	Year	Asian		Black		Chinese		Mixed		Other		Unknown		White	
		Count	%	Count	%	Count	%	Count	%	Count	%	Count	%	Count	%
Leicester City	2006/07	3,111	47%	506	8%	16	0%	316	5%	229	3%	121	2%	2,338	35%
	2007/08	3,083	45%	553	8%	12	0%	334	5%	221	3%	145	2%	2,502	37%
East Midlands	2006/07	4,935	9%	1,769	3%	164	0%	1,781	3%	487	1%	669	1%	47,733	83%
	2007/08	4,973	8%	1,881	3%	174	0%	1,839	3%	471	1%	656	1%	49,644	83%

Source: 2007/08 ILR F05 returns (FE 0506-0708 Learner Drill down)

- 13 LSC data returns show that the white community in Leicester City represented 35% and 37% of the population learning in Further Education in 2006/07 and 2007/08 respectively. This is well below the East Midlands average of 83%. In 2007/08 the Asian, communities represented 45% of the population, which is considerably in excess of the regional average. Leicester City is unique in this respect. The proportions of Mixed and Black learners in FE in 2007/08 are also higher than regional averages.

Table 4: Leicester City 16-18 FE learners by highest level of study

	Year	Notional Level									
		Entry and Level 1		Level 2		Level 3		Level 4, 5 and Higher		Other (including Mixed)	
Leicester City	2006/07	1,143	17%	1,631	25%	3,853	58%	5	0%	5	0%
	2007/08	1,203	18%	1,641	24%	3,991	58%	3	0%	12	0%
East Midlands	2006/07	10,785	19%	17,631	31%	28,939	50%	65	0%	118	0%
	2007/08	12,359	21%	17,496	29%	29,556	50%	53	0%	174	0%

Source: 2007/08 ILR F05 returns (FE 0506-0708 Learner Drill down)

- 14 In 2007/08, 58% of 16-18 FE learners resident in Leicester City were studying at Level 3. This is above the regional average of 50%. Just under a quarter of those in learning in FE were studying at Level 2, slightly below the regional average of 29%. The remaining 18% were studying at Entry and Level 1, which is a small increase since 2006/07, and below the regional average (21%).

Apprenticeships

- 15 This section examines the participation of learners living in the Leicester City LA area who have undertaken or are undertaking Apprenticeships. The data includes learners who have been funded by East Midlands LSC areas, other LSC areas in England or the National Employer Service. An average of the number of learners undertaking Apprenticeships in a given month over a 12 month period is used to show participation in the 2006/07 and 2007/08 tables.

Table 5: Resident Learners by LA Level participating on Apprenticeships and proportion within the East Midlands

Local Authority	2006/07	% East Midlands	2007/08	% East Midlands
Derby City	832	6.0	843	6.3
Derbyshire	2769	20.1	2657	19.7
Leicester City	519	3.8	477	3.5
Leicestershire	1949	14.1	1899	14.1
Lincolnshire	2128	15.4	2013	14.9
Northamptonshire	2043	14.8	1994	14.8
Nottingham City	755	5.5	774	5.7
Nottinghamshire	2740	19.9	2767	20.5
Rutland	67	0.5	55	0.4
EAST MIDLANDS	13,802	100.0	13,479	100.0

Source: ILR - WBL AND E2E DRILL DOWNS 2006/07 and 2007/08 (July 2007 and July 2008)
Starts data

- 16 In 2007/08, 3.5% of the region's Apprenticeship learners lived in Leicester City. Compared to the other two main cities in the region, Nottingham City and Derby City, Leicester has the lowest proportion of resident learners undertaking Apprenticeships.

Table 6: 16-18 Apprenticeship Participation by Programme Level, 2006/07 – 2007/08

Area	Programme Level	2006/07	2007/08	% change 2006/07 - 2007/08
Leicester City	Apprenticeships	382	351	-8.1
	Advanced Apprenticeships	137	126	-8.3
	Total	519	477	-8.2
East Midlands	Apprenticeships	8905	8719	-2.1
	Advanced Apprenticeships	4897	4760	-2.8
	Total	13,802	13,479	-2.3

Source: ILR - WBL AND E2E DRILL DOWNS 2006/07 and 2007/08 (July 2007 and July 2008)
'Average in Learning' data

- 17 Between 2006/07 and 2007/08, there was a reduction in overall Apprenticeship participation amongst learners resident in Leicester City (8.2%). This is considerably greater than that in the region (-2.3%).
- 18 At the Programme level, both Apprenticeships and Advanced Apprenticeship saw a decline in learner participation. Reductions were also evident in the region overall for both Programme levels.

Table 7: 16-18 Overall Apprenticeship Programme Participation by Gender, 2006/07 – 2007/08

Area	Gender	2006/07		2007/08	
		Number	%	Number	%
Leicester City	Female	259	49.9	261	54.7
	Male	260	50.1	216	45.3
	Total	519	100.0	477	100.0
East Midlands	Female	4,958	35.9	4,916	36.5
	Male	8,844	64.1	8,563	63.5
	Total	13,802	100.0	13,479	100.0

Source: ILR - WBL AND E2E DRILL DOWNS 2006/07 and 2007/08 (July 2007 and July 2008)
'Average in Learning' data

- 19 Compared to the region, there were proportionately more females undertaking Apprenticeships amongst Leicester City resident learners in 2006/07 and 2007/08 than in the region as a whole. This was due to a large proportion of females from the area undertaking Apprenticeships related to the Health, Public Services and Care and Retail and Commercial Enterprise sectors.
- 20 Between the two years 2006/07 and 2007/08, there has been a small growth in the volume of female participation whilst male participation has decreased. This is in line with the regional picture.

Table 8: 16-18 Overall Apprenticeship Programme Participation by Ethnicity, 2006/07 – 2007/08

Area	Ethnicity	2006/07		2007/08	
		Number	%	Number	%
Leicester City	Ethnic Minority	84	16.2	94	19.8
	White	433	83.3	381	79.9
	Not Known	3	0.5	2	0.3
	Total	519	100.0	477	100.0
East Midlands	Ethnic Minority	420	3.0	472	3.5
	White	13,335	96.6	12,953	96.1
	Not Known	47	0.3	54	0.4
	Total	13,802	100.0	13,479	100.0

Source: ILR - WBL AND E2E DRILL DOWNS 2006/07 and 2007/08 (July 2007 and July 2008)
'Average in Learning' data

21 In 2007/08, 20% of those Leicester city residents undertaking Apprenticeships were from a minority ethnic background, which is almost five times greater than the proportion at regional level. This reflects the City's high minority ethnic population compared to other areas in the region. Like the region there has been an increase from 2006/07 to 2007/08.

Table 9: 16-18 Overall Apprenticeship Programme Participation by Learners with Learning Difficulties and/or Disabilities, 2006/07 – 2007/08

Local Authority	2006/07				2007/08			
	No Disability/Learning Difficulty	Not Known/Not Provided	Disability/Learning Difficulty Recorded	% with Disability/Learning Difficulty	No Disability/Learning Difficulty	Not Known/Not Provided	Disability/Learning Difficulty Recorded	% with Disability/Learning Difficulty
Leicester City	483	3	33	6.3	447	1	29	6.2
East Midlands	12987	53	762	5.5	12768	65	646	4.8

Source: ILR - WBL AND E2E DRILL DOWNS 2006/07 and 2007/08 (July 2007 and July 2008) 'Average in Learning' data

22 Learners on Apprenticeships, as in FE, are asked whether they feel they have a learning difficulty and/or disability and so the numbers shown here and in later tables reflect learners who have self-declared a difficulty or disability.

23 There has been a marginal decrease in the volume and proportion of learners with a learning disability and/or disability from Leicester City undertaking Apprenticeships in 2007/08 since 2006/07. This is smaller than reduction in the overall region.

2008/09 Data – Period 8 (latest to March 2009)

24 Latest information on Apprenticeships is available up to March 2009 in the academic year. The data below provides provisional indications of current participation on the Apprenticeship programme by learners resident in Nottinghamshire. Data as at March 2008 for 2007/08 is used to compare the current picture.

Table 10: 16-18 Apprenticeship Participation, 2008/09

Area	Programme Level	2007/08 (March 08)	2008/09 (March 09)	2007/8 - 2008/09 Change	
				Number	% Change
Leicester City	Apprenticeship	357	381	24	6.6
	Advanced Apprenticeship	137	130	-8	-5.5
	Total	494	511	16	3.3
East Midlands	Apprenticeship	9036	8,577	-459	-5.1
	Advanced Apprenticeship	4990	4,748	-242	-4.9
	Total	14027	13,325	-702	-5.0

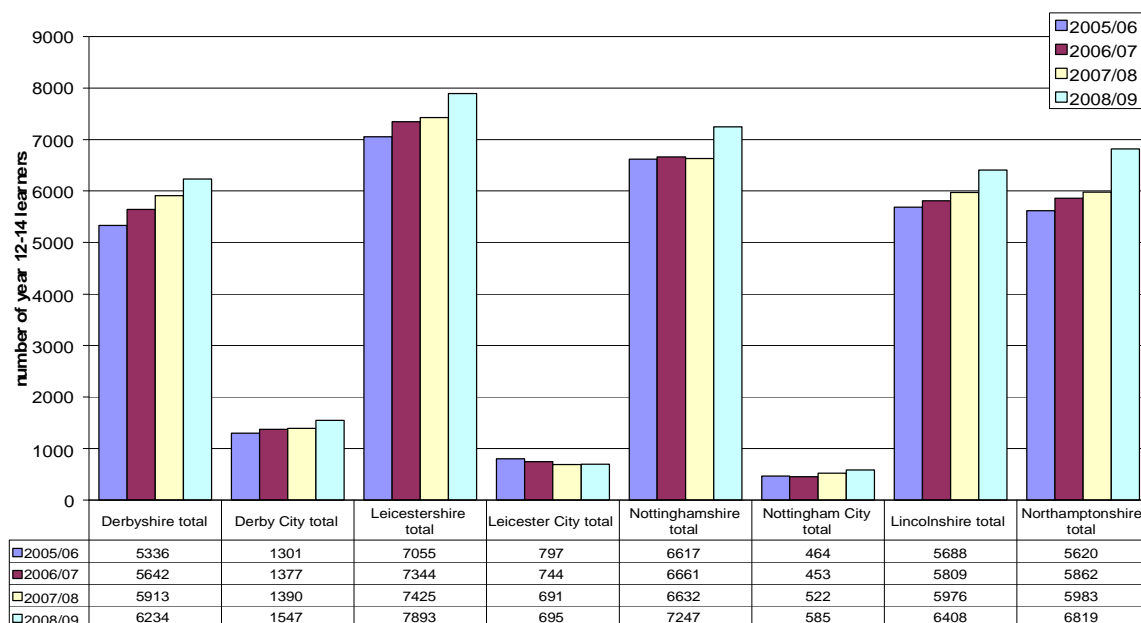
Source: ILR - Employer Responsive Drill Downs 2008/09, Period 8 (March 2009), WBL and E2E 2007/08 Period 8 Drill Downs (March 2008)

- 25 Overall, Apprenticeship participation as at the end of March is marginally higher in 2008/09 compared to the same period in 2007/08 amongst learners residing in Leicester City (+ 16 learners, 3.3%). This is in contrast to the region where there has been an overall decrease during the same period.
- 26 At a Programme Level, there is a slightly lower number of Advanced Apprenticeship participants in 2008/09 than in 2007/08.

School Sixth Forms

- 27 There are 4 schools with sixth forms in Leicester City. 9.6% % of the total 16-18 population living in the LA are educated at these institutions². Over the last 4 years, the school sixth form population has decreased by 13%.
- 28 Leicester City saw very little change in the total number of learners in Years 12-14 in 2008/09 with only a 0.6 per cent increase on 2007/08 numbers. This is the lowest rate of increase in the East Midlands. It is also the only area to show a decrease in the number of school sixth form learners over the past four years.

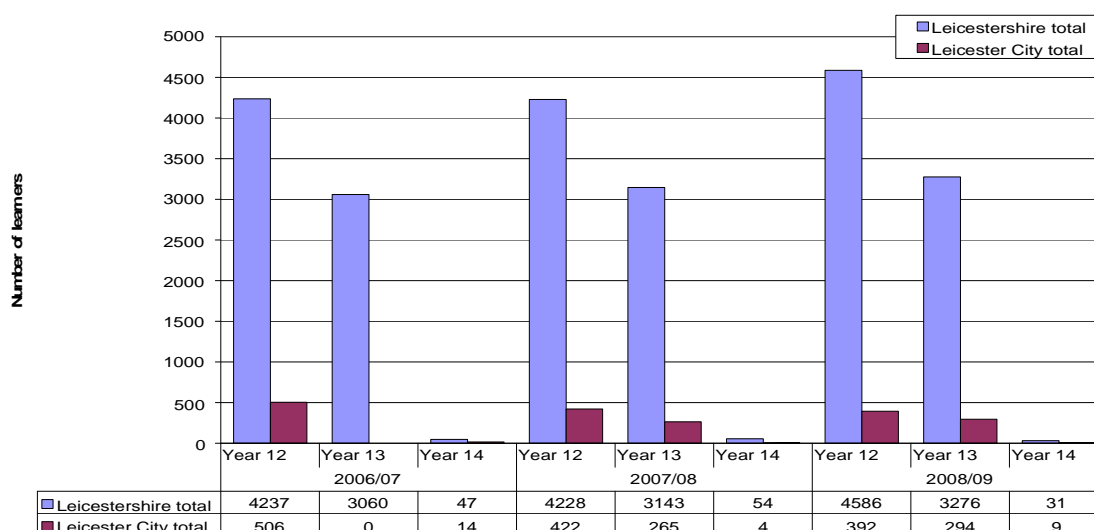
Figure 1: 16-18 learner numbers in school sixth forms, 2006/07-2008/09



Source: PLASC, 2006-2008

² 16-18 single year mid-2007 population estimates from the Office of National Statistics and the 2008/09 Schools Sixth Form 2008/09 Census data have been used to calculate this figure

Figure 2: Learner numbers in Years 12-14 for Leicester City and Leicestershire, 2006/07-2008/09



Source: PLASC, 2006-2008

- 29 Similar to previous years, in 2008/09 there was a 25% decrease in learners in the cohort between years twelve and thirteen in Leicester City School Sixth Forms. A very small percentage stayed on in learning into year 14.

Table 11: 16-18 learners attending a Schools Sixth Form funded by the LSC East Midlands: Gender breakdown (% of total group)

School LA	2007/08 Learners		2008/09 Learners	
	Female %	Male %	Female %	Male %
Derby City	54.5	45.5	54.2	45.8
Leicester City	51.5	48.5	49.4	50.6
Nottingham City	57.3	42.7	56.4	43.6
Nottinghamshire	53.1	46.9	53.3	46.7
Derbyshire	53.4	46.6	53.0	47.0
Leicestershire	52.3	47.7	50.5	49.5
Lincolnshire	53.2	46.8	53.1	46.9
Northamptonshire	53.3	46.7	52.6	47.4
East Midlands	53.1	46.9	52.5	47.5

Source: LSC MI 2007/08 and 2008/09 Schools Sixth Form Analysis

- 30 The proportion of females attending a Schools Sixth Forms in Leicester City is lower than the region as a whole in 2007/08 and 2008/09. In 2008/09, the split was almost 50/50 which is in contrast to the region which has more females than males learning in Schools Sixth Forms.

**Table 12: 16-18 learners attending a Schools Sixth Form funded by the LSC
East Midlands: Ethnicity breakdown (% of total group)³**

LA Area	Year	Any Other	Asian or Asian British	Black or Black British	Chinese	Mixed Heritage	Not Known/Not Provided	White
Derby	2007/08	0.2	16.0	2.6	1.0	2.5	2.2	75.4
	2008/09	0.7	14.7	2.1	0.8	2.3	1.3	78.1
Leicester	2007/08	1.0	40.1	5.8	0.0	7.1	0.9	45.1
	2008/09	1.2	38.6	6.4	0.1	5.7	1.9	46.1
Nottingham	2007/08	0.2	14.5	10.7	1.1	4.5	0.9	68.0
	2008/09	1.0	19.1	8.9	0.5	5.2	0.2	65.1
Nottinghamshire	2007/08	0.4	2.4	0.9	0.6	1.1	0.8	93.9
	2008/09	0.4	2.5	0.8	0.8	1.4	1.4	92.6
Derbyshire	2007/08	0.1	0.9	0.2	0.4	1.2	0.6	96.6
	2008/09	0.2	0.8	0.2	0.3	1.1	0.8	96.5
Leicestershire	2007/08	0.3	12.1	0.5	0.5	2.0	2.0	82.5
	2008/09	0.3	11.8	0.6	0.5	2.2	2.6	82.0
Lincolnshire	2007/08	0.5	1.3	0.6	0.7	1.1	0.9	95.0
	2008/09	0.3	1.1	0.6	0.7	1.1	1.1	95.1
Northamptonshire	2007/08	0.4	4.6	2.3	0.5	2.5	1.5	88.2
	2008/09	0.4	4.6	2.9	0.5	2.7	1.2	87.9
East Midlands	2007/08	0.3	5.9	1.2	0.6	1.8	1.2	89.0
	2008/09	0.4	5.7	1.3	0.6	1.9	1.4	88.7

Source: LSC MI 2007/08 and 2008/09 Schools Sixth Form Analysis

- 31 Compared to the region as a whole, Schools Sixth Forms in Leicester City had a higher proportion of learners from an Asian or Asian British background and from a Mixed Heritage background in 2007/08 and 2008/09. In contrast, there was a considerably lower proportion of those from a White background.

³ Asian or Asian British includes those who are Indian, Pakistani or Bangladeshi or from any other Asian background. Black or Black British includes those with an African or Caribbean heritage or from any other Black background. Mixed heritage includes those who are White and Asian, White and Black African, White and Black Caribbean or from any other Mixed heritage background. White includes those who are White British, White Irish or from any other White background.

Table 13: 16-18 learners attending a Schools Sixth Form funded by the LSC East Midlands: Special Educational Needs (SEN) (% of total group)

LA NAME	2007/08 Learners				2008/09 Learners			
	School/ Early Years Action %	School/ Early Years Action + %	Statement %	No SEN %	School/ Early Years Action %	School/ Early Years Action + %	Statement %	No SEN %
Derby	1.1	0.1	1.0	97.7	4.7	0.7	1.1	93.6
Leicester	5.6	2.4	0.3	91.7	6.9	3.1	0.7	89.3
Nottingham	5.6	2.4	0.4	91.5	5.5	2.1	0.3	92.1
Nottinghamshire	4.0	0.5	0.4	95.1	4.8	0.8	0.6	93.8
Derbyshire	1.9	0.8	0.4	96.8	1.5	1.1	0.6	96.9
Leicestershire	1.9	1.0	1.1	96.0	2.4	1.1	1.0	95.5
Lincolnshire	2.5	1.1	0.9	95.4	4.2	1.5	0.9	93.4
Northamptonshire	3.2	0.8	0.8	95.2	5.7	1.2	0.9	92.2
East Midlands	2.8	0.9	0.7	95.6	3.8	1.2	0.8	94.2

Source: LSC MI 2007/08 and 2008/09 Schools Sixth Form Analysis

- 32 Table 13 shows the proportion of 16-18 learners with Special Educational Needs (SEN) attending Schools Sixth Forms across local authority areas in the East Midlands in 2007/8 and 2008/09.
- 33 The data reflects a variation of learner proportions with SEN across the different local authority areas partly due to the different policies applied in different localities.
- 34 Further detailed information about learners with Special Educational Needs will be provided in a separate report to be published in the next couple months focusing on learners with learning difficulties and/or disabilities.

Entry to Employment (E2E)

- 35 This section provides summary information about learners who have undertaken Entry to Employment (E2E) programmes in 2006/07 and 2007/08.
- 36 More detailed information about the learners in terms of gender, ethnicity and learning difficulties and/or disabilities will be available in the next phase of these reports at the end of June.

**Table 14: E2E trends in Starts, Occupancy*, and Average Length of Stay
2006/07 – 2007/08: learners living in local authority areas**

Local Authority	2006/07	2007/08	2006/07	2007/08	2006/07	2007/08	2006/07	2007/08
	Starts		Participation (Occupancy)		Total Leavers		Average Stay (weeks)	
Derby City	550	473	196	182	524	431	15.5	16.2
Derbyshire	811	886	286	336	732	804	14.8	16.0
LEICESTER CITY	356	401	142	161	337	376	16.3	16.8
Leicestershire	312	380	119	148	318	342	15.1	15.9
Lincolnshire	621	613	272	297	573	553	20.9	19.1
Northamptonshire	711	676	274	287	652	694	17.2	17.9
Nottingham City	314	335	143	178	285	288	21.9	23.5
Nottinghamshire	662	609	323	438	636	552	21.2	24.4
Rutland	7	3	5	7	11	1	22.2	19.3
EAST MIDLANDS	4344	4376	1760	2033	4068	4041	17.8	18.5

Source: ILR - WBL and E2E drill downs 2006/07 – 2007/08. *Occupancy shows the average number of learners on an E2E programme in one month.

- 37 Leicester City has had an increase in starts and participation in E2E between 2006/07 and 2007/08, which reflects the overall regional increase.
- 38 The average stay in E2E learning (by weeks) has increased marginally during this period. This suggests that the more difficult to reach learners are enrolling on the programme and requiring more support to stay in learning. Nevertheless, the average length of stay in Leicester City (16.8 weeks) in 2007/08 was still considerably below that of the region (18.5 weeks). In some part this is due to a high regional average driven up by Nottingham City/Nottinghamshire where the programme provides learning at Level 1 for E2E learners.

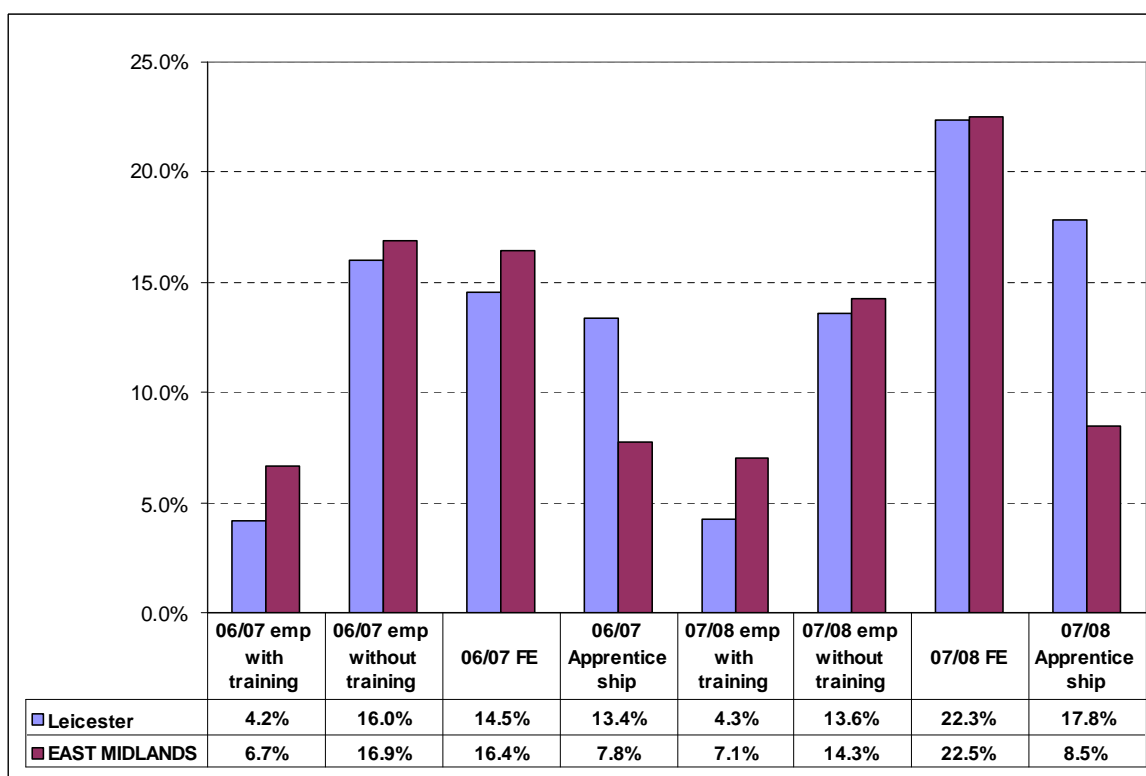
Table 15: E2E trends in Positive Outcomes: Overall Positive Outcomes, FE and Apprenticeships (App) 2006/07 – 2007/08: learners living in local authority areas

Local Authority	Positive outcomes									
	2006/07					2007/08				
	OVERALL	emp WITH training	emp WITHOUT training	FE	APP.	OVERALL	emp WITH training	emp WITHOUT training	FE	APP.
Derby City	229	21	69	101	38	219	20	50	122	27
Derbyshire	358	39	113	139	67	395	40	108	181	66
LEICESTER CITY	162	14	54	49	45	218	16	51	84	67
Leicestershire	162	44	52	44	22	196	27	61	79	29
Lincolnshire	309	77	115	82	35	311	35	120	129	27
Northamptonshire	304	30	137	99	38	350	91	84	126	49
Nottingham City	104	15	29	51	9	124	23	26	58	17
Nottinghamshire	305	32	110	101	62	301	32	76	131	62
Rutland	9	0	7	2	0	1	1	0	0	0
EAST MIDLANDS	1942	272	686	668	316	2115	285	576	910	344

Source: ILR - WBL and E2E drill downs 2006/07 – 2007/08

- 39 A positive outcome from an E2E programme in LSC terms is a learner who progresses to either FE, an Apprenticeship or other employment with training. In LSC terms employment **without** training is not a positive outcome, but for ease of reading the employment without training figures have been included in table 12 above.
- 40 The number of positive outcomes from E2E learning amongst Leicester City's residents has increased by 35% between 2006/07 and 2007/08. The proportion of Young People progressing into Apprenticeships rose from 28% to 31% over this period, and those going into FE rose by 9 percentage points. The proportion of young people leaving the programme to go to a job without training fell by 10 percentage points over this period. This compares favourably with the region where the proportion of young people going into Apprenticeships remained static, those going into FE rose by 9% and those leaving the programme to go to a job without training fell by 8% over this period.

Figure 3: Leicester City Learners - E2E trends in Positive Outcomes: Overall Positive Outcomes, FE and Apprenticeships (App) 2006/07 – 2007/08



Source: ILR - WBL and E2E drill downs 2006/07 – 2007/08

2008/09 – Latest position to January 2009

- 41 Table 16 represents the latest position (to January 2009) on E2E starts by learners living in local authority areas in the region.

Table 16: 2008/09 latest E2E Learner Starts – Learners Living in the East Midlands (includes provision contracted outside of the region)

Local Authority Area	2008/09 16-18 E2E Starts - latest to January 2009
Derby City	225
Derbyshire	590
Leicester City	124
Leicestershire	127
Lincolnshire	370
Northamptonshire	341
Nottingham City	202
Nottinghamshire	326
Rutland	4
East Midlands total	2309

Source: ILR - DASH 0809-0809 - E02 - Learner.xls

42 More detailed information on the latest picture will be available in the second phase of these reports.

September Guarantee

Table 17: September Guarantee status for year 11 students, 2008/09

	Y11 Guarantee			
	Offer made	Not ready for learning	No offer made	Not recorded
England	94.2%	2.9%	2.7%	0.2%
East Midlands	93.4%	5.1%	1.5%	0.0%
Derby City	93.0%	5.1%	1.9%	0.0%
Derbyshire	89.8%	8.4%	1.8%	0.0%
Leicester City	95.3%	3.4%	1.3%	0.0%
Leicestershire	95.3%	3.8%	0.8%	0.0%
Lincolnshire	94.5%	4.0%	1.5%	0.0%
Northamptonshire	92.5%	5.6%	1.9%	0.0%
Nottingham City	93.7%	4.1%	2.2%	0.0%
Nottinghamshire	93.9%	5.2%	0.9%	0.0%
Rutland	95.9%	2.5%	1.7%	0.0%

Source: Connexions via Department of Children Schools and Families NCCIS data system

Table 18: September Guarantee status for 17 year olds, 2008/09

	17 year old Guarantee			
	Offer made	Not ready for learning	No offer made	Not recorded
England	79.7%	9.6%	7.2%	3.4%
East Midlands	78.6%	16.8%	4.6%	0.0%
Derby City	78.2%	20.3%	1.5%	0.0%
Derbyshire	67.5%	30.7%	1.8%	0.0%
Leicester City	87.1%	8.7%	4.2%	0.0%
Leicestershire	88.7%	9.4%	1.9%	0.0%
Lincolnshire	73.7%	20.7%	5.6%	0.0%
Northamptonshire	65.8%	27.8%	6.4%	0.0%
Nottingham City	80.0%	13.2%	6.9%	0.0%
Nottinghamshire	78.2%	17.7%	4.1%	0.0%
Rutland	83.3%	16.7%	0.0%	0.0%

Source: Connexions via Department of Children Schools and Families NCCIS data system

- 43 In September 2008 Leicester City achieved offer levels of 95.3% and 87.1% for Year 11 and Year 12 respectively. For the Year 11 guarantee this is 1.8 percentage points (pp) and 1.1 pp above regional and national levels and joint 2nd out of 9 LA's within East Midlands. For the Year 12 guarantee this is 8.5 pp and 7.4 pp above regional and national levels and is 2nd out of 9 LA's within East Midlands.
- 44 For Year 11, of those without an offer, 127 persons were recorded as 'Not ready for formal learning at this time' of which 49 were 'Going into employment without training to NVQ Level 2'. 50 were recorded as 'No offer Made', with 47 due to being 'unable to contact'.

Travel to learn patterns

Further Education

- 45 99 per cent of Leicester resident 16-18 FE learners were learning at an FE institution within the East Midlands in 2007/08 – 87 per cent within Leicester City institutions. Only 66 residents choose to access FE provision outside of the region, half of these in the West Midlands. This is usually due to proximity of institutions to the learner's place of residence, or proximity to parental work. In Table 19 below, the small numbers in distant regions – coded in yellow - were accessing provision from an institution whose home region is as indicated. Usually the institution makes local provision available. Learners do not travel to far flung parts of the country.

Table 19: 16-18 FE learners by LA of residence and region of FE institution, 2007/08

LA of learner residence	Region of FE institution									Total resident 16-18 learners
	East of England	East Midlands	Greater London	North East	North West	South East	South West	West Midlands	Yorkshire & Humberside	
Derby	4	3,305	3		5	3	4	246	5	3,575
Derbyshire	17	7,921	9	2	879	6	6	617	251	9,708
Leicester	6	6,784	8		10	3	1	32	6	6,850
Leicestershire	13	5,868	7		252	6	15	930	7	7,098
Lincolnshire	461	6,527	78	2	13	20	10	20	1,269	8,400
Northamptonshire	252	7,514	19		68	312	11	235	13	8,424
Nottingham	4	5,052	6		1	2		7	10	5,082
Nottinghamshire	30	9,370	16	2	12	8	13	41	210	9,702
Rutland	10	536			2	3	5	3	3	562
Unknown	7	201	1		8	1		6	13	237

Source: 2007/08 ILR F05 returns (FE 0506-0708 Learner Drill down)

Table 20: Leicester City and Leicestershire 16-18 resident learners learning with East Midlands FE providers, 2007/08

LA of provider	Provider name	Leicester		Leicestershire	
		Learner numbers	%	Learner numbers	%
Derby City	Derby College	26	0.4	60	0.8
Derbyshire	Chesterfield College	3	0.04		
	Derbyshire County Council	1	0.01		
	South East Derbyshire College	1	0.01		
	University of Derby, High Peak College	1	0.01		
Leicester City	Gateway Sixth Form College	1,006	14.7	100	1.4
	Leicester City Council	79	1.2	15	0.2
	Leicester College	2,420	35.3	1,384	17.5
	Regent College	868	12.7	54	0.8
	Wyggeston and Queen Elizabeth I College	1,580	23.1	291	4.1
Leicestershire	Brooksby Melton College	103	1.5	562	7.9
	Leicestershire County Council	3	0.04	110	1.5
	Loughborough College	297	4.3	1,171	16.5
	South Leicestershire College	285	4.2	531	7.5
	Stephenson College	72	1.1	1,205	17
Lincolnshire	Grantham College	1	0.01	79	1.1
	Lincoln College	11	0.2		
	Stamford College	17	0.2		
Northamptonshire	Northampton College	14	0.2		
	Tresham Institute	29	0.4	138	1.9
	Moulton College F.E.C	3	0.04	40	0.6
Nottingham City	New College, Nottingham	4	0.06	33	0.5
	South Nottingham College	15	0.2		
	Castle College, Nottingham	3	0.04	26	0.4
	Bilborough College	3	0.04		
Nottinghamshire	North Nottinghamshire College				
	West Nottinghamshire College	3	0.04	4	0.1
Rutland	Rutland County Council	1	0.01		
East Midlands total		6,784	99.	5,868	82.7

Source: 2007/08 ILR F05 returns (FE 0506-0708 Learner Drill down)

- 46 896 Leicester City resident learners access their FE learning provision outside the city. The greatest proportion of these (85%) chose Leicestershire providers of which Loughborough College and South Leicestershire College are the most popular. The highest proportion, 36% of learners, attend Leicester College and a further 23% attend Wyggeston and Queen Elizabeth I Sixth Form College.
- 47 There are other small out flows of learners to other Local Authority areas in the region. The largest is 29 learners from Leicester City who travel to Tresham Institute in Northamptonshire.

Schools Sixth Forms

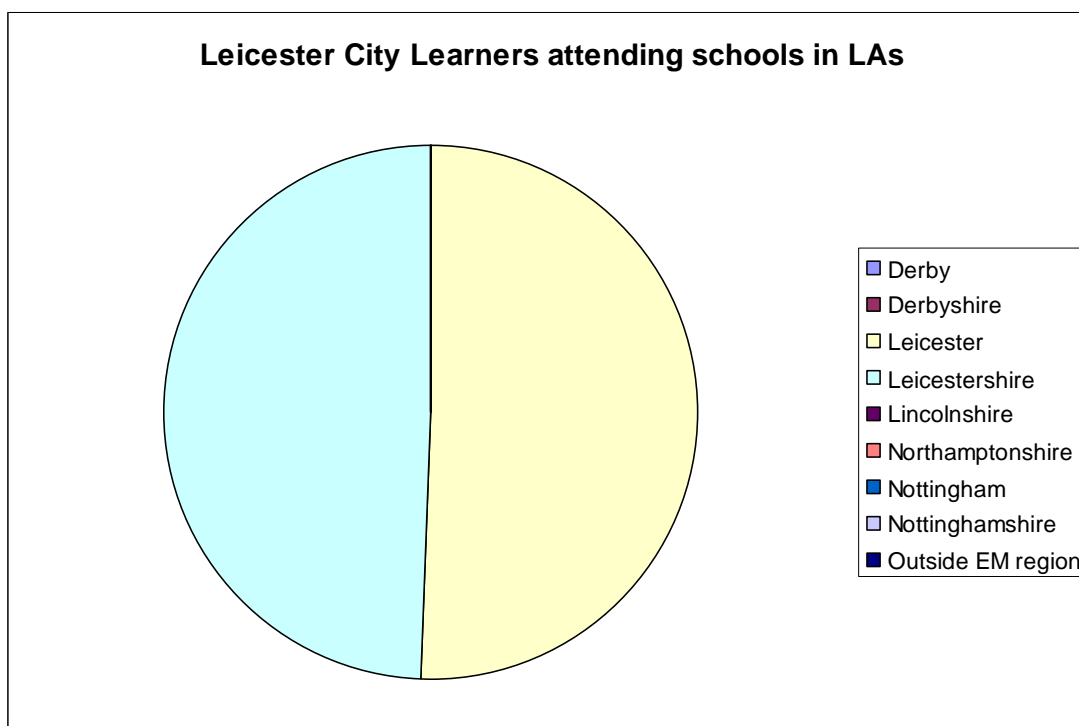
Table 21: Schools Sixth Form Learners Travel to Learn patterns, 2008/09

	Leicester City LA		Leicestershire LA	
	Number	%	Number	%
Number of learners resident in LA	1141	100.0	7384	100.0
Number of learners travelling to learn in:				
Derby	0	0.0	4	0.1
Derbyshire	0	0.0	6	0.1
Leicester	578	50.7	115	1.6
Leicestershire	563	49.3	7122	96.5
Lincolnshire	0	0.0	18	0.2
Northamptonshire	0	0.0	17	0.2
Nottingham	0	0.0	0	0.0
Nottinghamshire	0	0.0	61	0.8
Outside EM region	0	0.0	41	0.6

Source: Schools Sixth Form Census 2008/09

- 48 There is almost a 50/50 split between learners living in Leicester City either attending a Schools Sixth Form in Leicester City or in Leicestershire local authority. In contrast, there was lower outflow of learners living in Leicestershire travelling to a Schools Sixth Form in the City.
- 49 There were also no Leicester City Schools Sixth Form learners that travelled outside of these two areas to attend a Schools Sixth Form.

Figure 4: Schools Sixth Form Learners Travel to Learn patterns, 2008/09



Source: Schools Sixth Form Census 2008/09

16-18 resident learner achievement

FE Achievements

Table 22: Aims achieved by learners resident in East Midlands local authorities by level, 2006/07-2007/08

	2006					2007				
	Full Level 2 aims	% of aims at Full Level 2	Full Level 3 aims	% of aims at Full Level 3	Total aims	Full Level 2 aims	% of aims at Full Level 2	Full Level 3 aims	% of aims at Full Level 3	Total aims
Leicestershire	1,014	13.6%	600	8.1%	7,445	1,282	14.6%	973	11.1%	8,804
Leicester City	379	3.4%	120	1.1%	11,263	781	5.5%	403	2.8%	14,153
Northamptonshire	1,220	12.7%	875	9.1%	9,633	1,373	12.7%	1,055	9.8%	10,781
Derbyshire	1,643	11.0%	1,205	8.1%	14,956	1,653	10.6%	1,350	8.7%	15,566
Derby City	465	8.2%	322	5.7%	5,659	516	8.8%	330	5.7%	5,838
Lincolnshire	1,428	11.6%	960	7.8%	12,327	1,510	11.1%	1,177	8.7%	13,583
Rutland	48	4.8%	45	4.5%	1,006	66	5.1%	66	5.1%	1,303
Nottinghamshire	1,377	9.6%	993	6.9%	14,363	1,661	10.1%	1,190	7.2%	16,484
Nottingham City	602	7.3%	310	3.8%	8,260	634	7.0%	429	4.8%	9,014
East Midlands	8176	9.6%	5,430	6.4%	84,912	9,476	9.9%	6,973	7.3%	95,526

Source: 2007/08 ILR F05 returns (FE 0506-0708 Success rates Drill down)

50 Table 22 shows the proportions of curriculum study at different levels taken by Leicester City residents. The count is by learning aim. An individual may be studying a range of learning aims at more than one level. So these figures

do not equate to learners, but to enrolments at a particular level on a particular course. The count also only relates to those achieving at **Full** Level 2 or 3. There will be a large number of enrolments on courses that are at Level 2 and 3 but where the total learning aims studied do not amount to a **Full** Level 2 or 3. This explains the relatively low proportions of achievements.

Apprenticeship Framework Completions

51 The table below looks at the number of Apprenticeship Frameworks completed and achieved by Leicester City learner residents. In LSC terms, an Apprenticeship is only achieved if the learner leaves with the full framework completed, including all the key skills and technical certificates in that particular framework. Several apprentices achieve only an NVQ, because their employer often does not see the benefit in the learner taking the other elements of the programme. Those learners are not included in the table below.

Table 23: 16-18 Apprenticeship Framework Completions by Achievement and Programme Level, 2006/07 – 2007/08

Year	Programme Level	Leicester City	East Midlands
2006/07	Apprenticeship	193	4,777
	Advanced Apprenticeship	39	1,520
	Total	232	6,297
2007/08	Apprenticeship	203	4,443
	Advanced Apprenticeship	45	1,483
	Total	248	5,926
2006/07 - 2007/08 % change	Apprenticeship	5.2	-7.0
	Advanced Apprenticeship	15.4	-2.4
	Total	6.9	-5.9

Source: ILR - WBL AND E2E DRILL DOWNS 2006/07 and 2007/08 (July 2007 and July 2008) Completions data

52 There has been an increase in the number of Apprenticeship Frameworks achieved by Leicester City resident learners in 2007/08 compared to 2006/07 (6.9%). Both Level 2 and Level 3 Apprenticeships saw rises in their completion rates over the year.

53 Leicester City compares well with the region in Advanced Apprenticeships. Where the City saw an increase of 15.4% in achievements of a full framework, the region saw a decrease of 2.4%. The differences in Apprenticeships were similar, though smaller and again show an increase where the region saw a fall of 7%.

School Sixth Forms

54 As Table 24 below indicates, there has been a considerable rise (31.7) in the average point score of those learners achieving A-Level grades in Leicester

City between 2002 and 2006. The increase compares favourably with that of the region (30) but is lower than that nationally (35).

Table 24: Average A-Level point score for candidates and entry by East Midlands local authority

	Per candidate			Per Entry		
	2002	2006	Difference	2002	2006	Difference
Derby LA	237	256.1(r)	19.1	73	77.2(r)	4.2
Derbyshire LA	265.2	281.8(r)	16.6	75.3	76.9(r)	1.6
Leicester LA	211.7	243.4(r)	31.7	67.9	72.8(r)	4.9
Leicestershire LA	247.8	277.4(r)	29.6	72.9	74.1(r)	1.2
Lincolnshire LA	275.3	304.6(r)	29.3	76.6	79.1(r)	2.5
Northamptonshire LA	236.4	268.2(r)	31.8	71.8	75.6(r)	3.8
Nottingham LA	222.6	296.2(r)	73.6	70.9	77.1(r)	6.2
Nottinghamshire LA	234.4	260.3(r)	25.9	69.4	71.4(r)	2
Rutland LA(r)(r)	..
East Midlands	245.5	275.8(r)	30.3	72.6	75.4(r)	2.8
England	254.7	289.5(r)	34.8	76	80.2(r)	4.2

Source: DCSF, (http://www.dcsf.gov.uk/inyourarea/statics/gor_E_12.shtml)

Part 2 - Progress to PSA targets at 19

55 The position of learners at age 19 in terms of the PSA target in any local authority is strongly influenced by the achievements in that local authority's schools at 16. These figures are shown in Table 25 below.

Table 25: GCSE achievements by 15 year old pupils in the East Midlands, 2007/08

	Number of 15 year old pupils			% achieving 5 A*-C grade GCSEs			% achieving 5 A*-C grades, incl. English and Maths		
	Boys	Girls	Total	Boys	Girls	Total	Boys	Girls	Total
East Midlands	27,381	26,160	53,541	58.4	67.2	62.7	43.2	50.5	46.8
Derby	1,540	1,519	3,059	63.2	63.9	63.6	46.8	51.9	49.3
Derbyshire	4,747	4,614	9,361	57.7	68.1	62.8	44.0	52.4	48.2
Leicester	1,835	1,639	3,474	52.2	58.9	55.3	37.1	42.7	39.7
Leicestershire	3,996	3,707	7,703	59.2	69.8	64.3	48.3	55.3	51.7
Lincolnshire	4,297	4,213	8,510	67.1	74.0	70.5	48.9	55.6	52.2
Northamptonshire	4,321	4,088	8,409	55.0	63.7	59.2	41.1	49.4	45.1
Nottingham	1,444	1,436	2,880	54.5	61.9	58.2	31.6	37.0	34.3
Nottinghamshire	4,963	4,717	9,680	55.5	66.5	60.9	38.9	47.4	43.0
Rutland	238	227	465	69.7	71.8	70.8	58.8	58.6	58.7
England	334,579	319,229	653,808	60.4	69.4	64.8	42.9	51.9	47.3

Source: DCSF, (<http://www.dcsf.gov.uk/rsgateway/DB/SFR/s000826/index.shtml>, Table 18a)

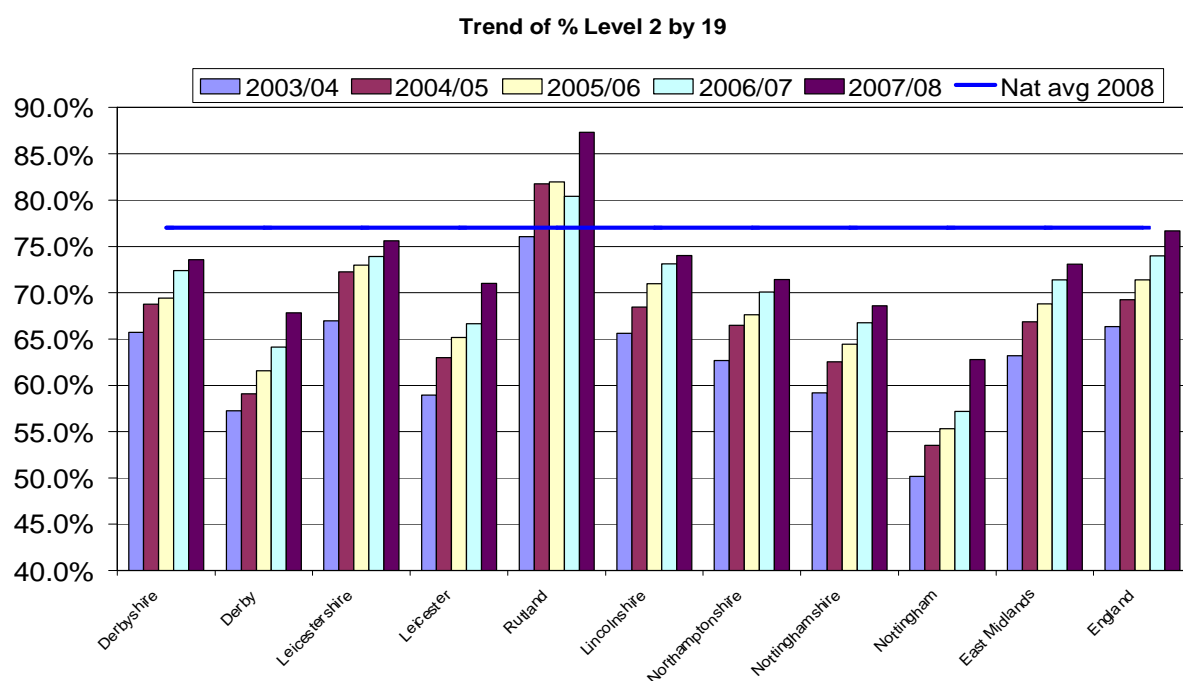
- 56 The proportion of young people in Leicester City achieving 5 GCSEs A*-C (the equivalent of a Level 2) (55.3%) is below both the national average (64.8%), and that of the region (62.7%). It is the lowest in the region and below that of both the other cities. The picture is the same when Full Level 2 with English and Maths is examined.
- 57 Achievement by boys remains considerably lower than girls in most areas.
- 58 There has been a considerable rise in the proportion of young people who gain a Full Level 2 by 19 over the last five years in the City. The proportion has risen by 8.6%. However this rate of change is below both that of the region (10.1%) and national changes of 10.4%. Further, as Figure 4 shows the City is still considerably below the national average.

Table 26: Progress towards PSA target NI 79 – achievement of Level 2 by age 19

	Aged 19 at the end of 2003/04	Aged 19 at the end of 2004/05	Aged 19 at the end of 2005/06	Aged 19 at the end of 2006/07	Aged 19 at the end of 2007/08	Aged 19 at the end of 2008/09	Aged 19 at the end of 2009/10
LEA Name	by age 19	by age 19	by age 19	by age 19	by age 19	by age 18	by age 17
Derbyshire	65.7%	68.8%	69.4%	72.4%	73.6%	71.7%	65.0%
Derby	57.3%	59.1%	61.6%	64.1%	67.8%	65.9%	60.3%
Leicestershire	67.0%	72.3%	73.0%	73.9%	75.6%	74.4%	68.4%
Leicester	58.9%	63.0%	65.2%	66.7%	71.0%	67.6%	63.1%
Rutland	76.0%	81.8%	82.0%	80.4%	87.3%	83.4%	81.3%
Lincolnshire	65.6%	68.4%	71.0%	73.1%	74.0%	73.8%	68.5%
Northamptonshire	62.7%	66.5%	67.6%	70.1%	71.4%	70.8%	62.9%
Nottinghamshire	59.2%	62.5%	64.4%	66.8%	68.6%	66.4%	60.2%
Nottingham	50.2%	53.5%	55.3%	57.2%	62.8%	59.9%	55.0%
East Midlands	63.2%	66.9%	68.8%	71.4%	73.1%	70.7%	64.3%
England	66.3%	69.2%	71.4%	74.0%	76.7%	74.8%	67.9%

Source: DCSF Website: Level2andlevel3attainmentin each LEAApr2009.xls

Figure 5: Trends in Level 2 by 19 by Local Authority learners



Source: DCSF Website: Level2andlevel3attainmentin each LEAApr2009.xls

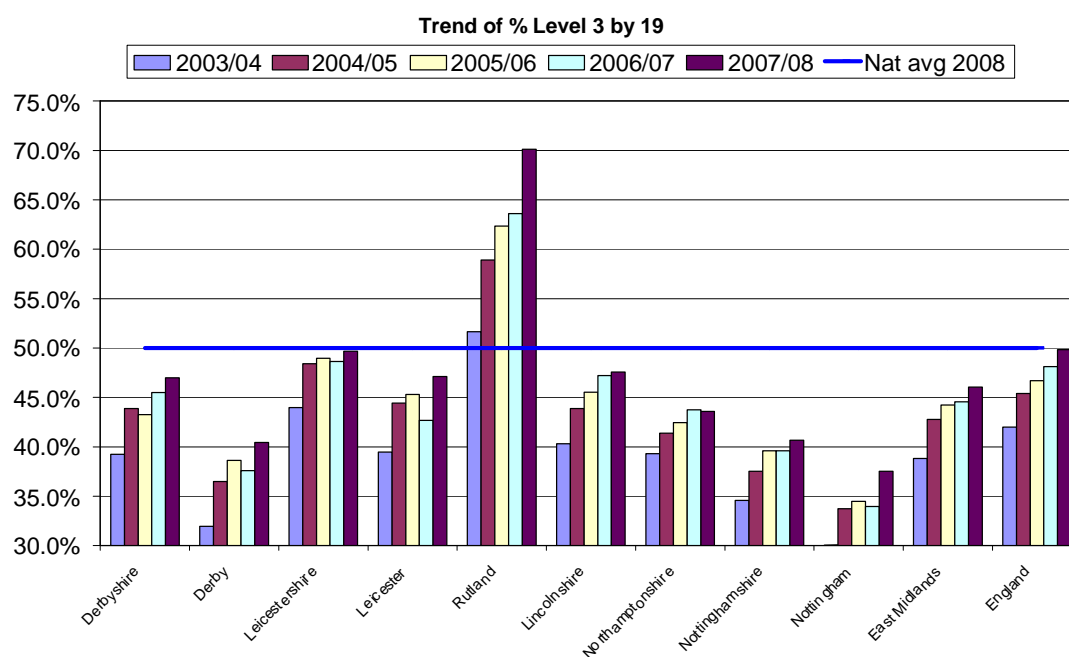
Table 27: Progress towards PSA target NI 80 – achievement of Level 3 by age 19

	19 in 2003/04	29 in 2004/05	19 in 2005/06	19 in 2006/07	19 in 2007/08	Aged 19 in 2008/09	Aged 19 in 2009/10
Region	by age 19	by age 19	by age 19	by age 19	by age 19	by age 18	by age 17
Derbyshire	39.2%	43.9%	43.3%	45.5%	47.0%	41.7%	16.8%
Derby	31.9%	36.5%	38.6%	37.6%	40.5%	35.2%	7.5%
Leicestershire	44.0%	48.4%	49.0%	48.6%	49.7%	45.7%	24.0%
Leicester	39.5%	44.4%	45.3%	42.7%	47.1%	37.9%	18.5%
Rutland	51.7%	58.9%	62.4%	63.6%	70.1%	61.2%	13.1%
Lincolnshire	40.3%	43.9%	45.5%	47.2%	47.6%	42.7%	15.8%
Northamptonshire	39.3%	41.4%	42.4%	43.8%	43.6%	40.3%	14.5%
Nottinghamshire	34.6%	37.5%	39.6%	39.6%	40.7%	35.6%	16.1%
Nottingham	30.0%	33.7%	34.5%	34.0%	37.5%	32.7%	12.1%
East Midlands	38.8%	42.8%	44.2%	44.6%	46.0%	40.6%	16.3%
England	42.0%	45.4%	46.7%	48.1%	49.8%	43.4%	16.9%

Source: DCSF Website: Level2andlevel3attainmentin each LEAApr2009.xls

59 There is a similar picture with Level 3 at 19. There has been a 5.7% rise in the proportion of young people who gain a Full Level 3 by 19 over the last five years in the City. This is a slower rate of improvement than both regional averages (7.2%) and the national change of 8.2%. In addition, as Figure 6 below shows, the City is still considerably below the national average.

Figure 6: Trends in Level 3 by age 19 by Local Authority learners



Source: DCSF Website: Level2andlevel3attainmentin each LEAApr2009.xls

Part 3 - Provision within Leicester City

60 This section shows how post-16 providers (excluding those for Apprenticeships) are delivering against their contracts and the quality of their delivery. It is important information for planning the number of commissioned places in 2010/1011, since learning places will need to be planned for all those who choose to learn within the City's institutions.

Further Education providers

FE participation

61 Fifteen percent of the region's Further Education learners study within Leicester City. Of these, Leicester college is responsible for 48% of the provision in FE within the City and Wyggeston and Queen Elizabeth I College for 23%.

Table 28: Number of 16-18 FE learners by level for each provider in Leicester City, 2006/07

Provider Name	2006/07					2007/08				
	Full Level 2	%	Full Level 3	%	Total Learners	Full Level 2	%	Full Level 3	%	Total Learners
Gateway Sixth Form College	214	18.5	271	23.5	1,155	198	17.7	331	29.6	1,120
Leicester City Council	3	2.1	1	0.7	140	0	0	0	0	101
Leicester College	1,009	26.3	869	22.6	3,842	1,017	25.6	1,078	27.1	3,975
Leicestershire County Council	0	0	0	0	99	1	0.9	0	0	116
Pre-school Learning Alliance	43	64.2	4	6	67	25	59.5	18	42.9	42
Regent College	148	16.8	252	28.6	881	130	14	249	26.9	926
Wyggeston and Queen Elizabeth I College	34	1.8	1,637	88.2	1,857	35	1.8	1,680	87.9	1,911
Leicester City Total	1,451	18	3,034	37.7	8,041	1,406	17.2	3,356	41	8,191
East Midlands Total	12,662	23.7	18,559	34.7	53,446	12,724	22.6	20,188	35.9	56,249

Table 29: Number of 16-18 FE learners by level for each provider in Leicester City, 2007/08

Provider Name	2008/09				
	Full Level 2	%	Full Level 3	%	Total Learners
Gateway Sixth Form College	176	17.1	429	41.8	1,027
Leicester City Council	4	11.8	3	8.8	34
Leicester College	1,147	28.1	1,286	31.5	4,079
Leicestershire County Council	1	2.3	0	0	43
Pre-school Learning Alliance	6	37.5	12	75	16
Regent College	138	11.6	221	18.6	1,186
Wyggeston and Queen Elizabeth I College	37	1.8	1,783	87.8	2,030
Leicester City Total	1,509	17.9	3,734	44.4	8,415
East Midlands Total	12,951	23.1	21,755	38.9	55,980

Sources: FE Learners Full Level 2 and Full Level 3 Drill Down 2005-06 - 2007/08 and 08/09 data - Dashboard 0809-0809 - LR FE - Learner.xls

NB: Total Learners also includes learners who are not undertaking L2/L3 qualifications

- 62 There was a fall in the proportion of young people studying at Level 2 in FE colleges between 2006/07 and 2007/08, although this has increased slightly in 2008/09 (year to date figures). Given that the City is below regional and national averages for achievement of Level 2 by 19 (the PSA Target), and that achievement of Level 2 by 16 is also below national and regional averages, this is an area for improvement in the future.
- 63 By contrast, the proportion of young people taking a Level 3 within the FE system has improved considerably since 2006. There has been a 7% increase in this proportion over this time scale. However the 2008/0-9 figures are not final end of year totals and must be viewed with some caution.

Table 30: Number of 16-18 FE learners with a learning difficulty and/or disability (LLDD) by provider in Leicester City, 2007/08

LA	Provider	LLDD	
Leicester City	Learner numbers	No.	% of LLDD with each Provider
	Gateway Sixth Form College	143	12.8
	Leicester City Council	3	2.9
	Leicester College	575	14.5
	Regent College	200	21.6
	Wyggeston and Queen Elizabeth I College	291	15.2
Leicester City Total – Overall Providers		1730	15.1

Source: 2007/08 ILR F05 returns (FE 0506-0708 Learner Drill down)

- 64 Regent College had the highest proportion of learners with learning difficulties and/or disabilities in 2007/08 compared to other FE providers in Leicester City Local Authority Area funded by Leicestershire LSC. This reflects the work the college has done to improve its attractiveness to such learners. All three sixth form colleges have fairly high proportions of learners with learning difficulties and/or disabilities as a part of their cohorts.

Table 31: Numbers of East Midlands 16-18 FE learners by their district of residence by provider in Leicester City, 2007/08

LA of provider		Derby City	Derbyshire	Leicester City	Leicestershire	Lincolnshire	Northamptonshire	Nottingham City	Nottinghamshire	Rutland	blank	Total East Midlands learners	Learners from outside of East Midlands	Full Total of learners
Leicester City	Gateway Sixth Form College			1,006	100						5	1111	9	1,120
	Leicester City Council			79	15				1			95	7	102
	Leicester College		5	2,420	1,384		8	5	7	13	5	3847	128	3,975
	Regent College			868	54		1				2	925	1	926
	Wyggeston and Queen Elizabeth I College		1	1,580	291	1	4			24	6	1907	4	1,911
Leicester City providers Total			6	5,953	1,844	1	13	5	8	37	18	7885	149	8,034

Source: 2007/08 ILR F05 returns (FE 0506-0708 Learner Drill down)

65 In terms of planning places for learning and learners within the City's providers, whilst by far the greatest proportion (75%) come from within the city itself, on 2007/08 figures, the Local Authority will need to ensure there are places available for learners from Leicestershire (23%) and for small numbers of learners from other local authorities, the majority of whom choose to study at Leicester and Wyggeston and Queen Elizabeth I Colleges. It is likely that these choices are made on the basis of curriculum availability, reputation and travel patterns. More detail on this issue will be provided in the curriculum update of these reports.

Table 32: Percentage of 16-18 FE learners by LA of residence for providers in Leicester City, 2007/08

LA of provider		Derby City	Derbyshire	Leicester City	Leicestershire	Lincolnshire	Northamptonshire	Nottingham City	Nottinghamshire	Rutland	blank	Total East Midlands learners	Learners from outside of East Midlands	Full Total of learners
Leicester City	Gateway Sixth Form College			89.82	8.93							99.20	0.8	100
	Leicester City Council			77.45	14.71							93.14	6.9	100
	Leicester College		0.13	60.88	34.82		0.20	0.13	0.18	0.34	0.13	96.78	3.2	100
	Regent College			93.74	5.83	0.05	0.11					99.89	0.1	100
	Wyggeston and Queen Elizabeth I College		0.05	82.68	15.23		0.21					99.79	0.2	100
Leicester City providers total		0.1	74.1	23	0.01	0.2	0.1	0.1	0.5	0.2	98.1	1.9	100	

Source: 2007/08 ILR F05 returns (FE 0506-0708 Learner Drill down)

Table 33: Numbers of 16-18 FE learners by region of residence for providers in Leicester City 2007/08

	Gateway Sixth Form College		Leicester City Council		Leicester College		Regent College		Wyggeston and Queen Elizabeth I College		Leicester City colleges total	
	No.	%	No.	%	No.	%	No.	%	No.	%	No.	%
East of England					22	0.6			1	0.1	23	0.3
East Midlands	1111	99.2	95	93.1	3847	96.8	925	99.9	1907	99.8	7885	98.1
Greater London	3	0.3			34	0.9					37	0.5
North East					5	0.1					5	0.1
North West					3	0.1			1	0.1	4	0.04
South East					22	0.6					22	0.3
South West					4	0.1					4	0.04
West Midlands					30	0.8					30	0.4
Yorkshire and Humber					3	0.1					3	0.03
Not known	6	0.5	7	6.9	5	0.1	1	0.1	2	0.1	21	0.3
Total learners	1120	100	102	100	3975	100	926	100	1911	100	8034	100

Source: 2007/08 ILR F05 returns (FE 0506-0708 Learner Drill down)

- 66 Leicester College draws learners from the widest geographic range, although only 3.2% of its learners come from outside of the East Midlands. Regent College, Gateway Sixth Form College and Wyggeston and Queen Elizabeth I College draw their learners almost exclusively from the East Midlands.

FE Achievements

- 67 Over the last two years, the FE providers in the city have all made improvement in their overall success rates at Level 2 and with the exception of the City Council and Regent College all are above regional averages. At Level 2, all providers who have Level 2 provision, except Regent College, saw an increase in success rates over the two years.
- 68 The picture is similar when the Level 3 position is examined. All providers with Level 3 provision are above regional averages, in some cases considerably so. All providers saw an increase in success rates.

Table 34: Success rates of Leicester City FE providers 2006/07

Provider	2006/07					
	Full Level 2		Full Level 3		Total	
	Achievements	Success rate	Achievements	Success rate	Achievements	Success rate
Gateway Sixth Form College	150	73.20%	40	65.60%	2,634	73.80%
Leicester City Council	3	42.90%			117	74.10%
Leicester College	616	65.6%	327	66.9%	3710	71.7%
Regent College	167	*	295	*	2,333	78.40%
Wyggeston and Queen Elizabeth I College	33	*	1613	*	6,562	89.20%
East Midlands average	7,587	69.60%	4,905	64.30%	79,184	75.80%

Source: 2007/08 ILR F05 returns (FE 0506-0708 Success rate Drill down). * Full Level 2 and Full Level 3 success rates are unavailable at this time due to data issues. The numbers of aims achieved shown are in-year calculations. This will be updated in the next phase of reporting.

Table 35: Success rates of Leicester City FE providers 2007/08

Provider	2007/08					
	Full Level 2		Full Level 3		Total	
	Achievements	Success rate	Achievements	Success rate	Achievements	Success rate
Gateway Sixth Form College	155	88.60%	60	88.20%	2,604	77.90%
Leicester City Council			0	0.00%	80	68.40%
Leicester College	613	68.20%	493	86.90%	4,435	79.60%
Regent College	149	*	308	*	2,373	76.80%
Wyggeston and Queen Elizabeth I College	33	*	1654	*	6,575	87.80%
East Midlands average	9,050	74.00%	6,638	74.00%	90,116	78.90%

Source: 2007/08 ILR F05 returns (FE 0506-0708 success rate Drill down). * Full Level 2 and Full Level 3 success rates are unavailable at this time due to data issues. The numbers of aims achieved shown are in-year calculations. This will be updated in the next phase of reporting.

FE Funding

69 Sixteen to eighteen funding in FE for Leicester City has increased over the last three years by 7.5%. Only the City Council has seen a year on year fall in its funding, reflecting the changing nature of 16-18 provision and a move by young people to increasing Full time participation in colleges and school sixth forms.

70 In 2008/09, the LSC introduced its new Demand Led Funding methodology and this was applied to the allocations process for funding FE provision in that year. For this reason, direct comparisons are not possible between 2007/08 funding levels and those in 2008/09. Further information about the Demand Led Funding methodology is available via the LSC web site (<http://www.lsc.gov.uk/providers/funding-policy/demand-led-funding/>).

Table 36: Changes to Funding for 16-18 FE: Leicester City

Provider	2006/07	2007/08		2008/09
	16-18	16-18	% change	16-18
Gateway Sixth Form College	£5,386,007	£5,805,068	7.8%	£5,438,910
Leicester City Council	£82,362	£63,315	-23.1%	£30,974
Leicester College	£14,345,950	£15,327,587	6.8%	£15,721,183
Regent College	£3,789,867	£4,328,551	14.2%	£4,523,124
Wyggeston and Queen Elizabeth I College	£8,148,284	£8,464,854	3.9%	£9,097,241
Leicester providers total	£31,572,470	£33,989,374	7.7%	£34,811,432

Source: 2007/08 ILR F05 returns (FE 0506-0708 Learner Drill down). *LSC 2008/09 allocations information

71 Gateway experienced a fall in funding in 2008/09, but this was largely due to growth restrictions due to capacity issues before the new college is built.

School Sixth Forms

School Sixth Form participation

Table 37: Numbers of Year 12-14 students in Leicester City School Sixth Forms, 2005/06-2008/09

	2005/06	2006/07	2007/08	2008/09
New College Leicester	136	63	74	79
The City of Leicester College	343	362	322	325
English Martyrs Catholic School	140	152	144	143
Saint Paul's Catholic School	178	167	151	148

Source: School Sixth Form Census Data

School Sixth Forms Achievement

72 Overall the City's average A-Level point score per student has increased over the last four years in a steady fashion, but both the LA average and the LSC averages remain below that of the national figures. The LSC average is considerably boosted by the inclusion of Wyggeston and Queen Elizabeth Sixth Form College. The other two sixth form colleges have A Level points scores below those of the schools with sixth forms as does Leicester College.

However both the sixth form colleges and Leicester College offer a wider curriculum than A Level at Level 3.

Table 38: A Level point scores per candidate and per entry by provider in Leicester City, 2008⁴

	Average point score per student			Average point score per examination entry		
	2006	2007	2008	2006	2007	2008
Local Authority Average	637.7	672.5	689.8	195.1	200.9	199.6
LSC Average	678.9	710.9	716.8	195.7	200.4	200.2
England Average	721.5	731.2	740	206.2	207.5	209.4
The City of Leicester College (SSF)	614.3	693.9	737.7	192.4	204.6	212.4
English Martyrs Catholic School	754.9	720.3	736.8	202.9	211.7	212
Gateway Sixth Form College	464	492.1	518.7	188.9	185.1	185.6
Leicester College (FE)	551.8	529.7	586.6	198.6	205.9	211
New College Leicester	363.3	<	-	155.7	<	-
Regent College	577.6	605.5	658.3	183.6	183.8	179
Saint Paul's Catholic School	613.3	680.1	681	190.7	203.1	204.4
Wyggeston and Queen Elizabeth I College	772.5	810.9	804.2	198.8	205.4	201.4

Source: DCSF, (<http://www.dcsf.gov.uk/performance/tables/>). < School or college has 10 or fewer students in a particular performance indicator. Results are not shown because of the risk of an individual student's results being identified.

School Sixth Form funding

73 Only 2008/09 funding information is available at this time. More detail, including 2009/10 funding allocations figures will be available in the next phase of the reports

Table 39: 2008/09 School Sixth Form funding in Leicester City

School Sixth Form	2008/09 Total funding allocation
The City of Leicester College	£1,745,019
English Martyrs Catholic School	£635,318
Saint Paul's Catholic School	£673,395
New College Leicester	£380,877
Leicester City total	£3,434,609

Source: 2008/09 LSC School Sixth Form funding allocations

⁴ All FE and SFC providers are included here for ease of reference

Apprenticeships

Apprenticeship participation

74 This section provides information on the number of learners participating on Apprenticeships within the Leicestershire LSC area (including the City) and the providers funded to deliver that learning. The data presents detailed information about those providers that are funded by Leicestershire LSC. However, some of these providers may not *deliver* the learning in the Leicestershire area and due to the complexities in how this data is constructed it is not possible at this stage to provide a breakdown of the delivery location of each Provider for individual learners.

Table 40: Number of 16-18 learners undertaking Apprenticeships with Providers funded by Leicestershire LSC, 2007/08

Providers	2007/08				
	Apprenticeship		Advanced Apprenticeship		Total
	No.	%	No.	%	No
Automotive Transport Training Limited	7	0.4	3	0.3	9
Barbon Limited	7	0.4	1	0.1	8
Brooksby Melton College	104	7.1	37	4.3	141
Carter & Carter Group Plc	26	1.8	0	0.0	26
Constant Browning Edmonds Limited	12	0.8	3	0.3	14
England And Wales Cricket Board Limited	0	0.0	66	7.9	66
Heart Of England Training Limited	150	10.3	20	2.3	170
In Training (ALD) Ltd	27	1.8	1	0.1	27
In Training (CBE) Ltd	3	0.2	1	0.1	4
Institute Of Swimming Limited	0	0.0	190	22.6	190
JHP Group Limited	1	0.1	0	0.0	1
Kaplan Financial Limited	4	0.3	10	1.2	14
Leicester College	228	15.6	104	12.3	331
Leicester City Council					
Leicestershire County Council	12	0.8	4	0.5	16
Leicestershire Engineering Training Group Limited	11	0.7	30	3.5	40
Loughborough College	62	4.3	80	9.5	142
Mardell Associates Limited	2	0.2	9	1.1	12
Mark Bremner	0	0.0	1	0.1	1
Newcastle College Construction Limited					
North Warwickshire And Hinckley College	70	4.8	31	3.7	101
Northampton College					
Potential (2000) Limited	0	0.0	1	0.1	1
Protocol Skills Limited	28	1.9	6	0.7	34
Rathbone Training	52	3.6	1	0.1	53
Slack & Parr Limited	0	0.0	23	2.7	23
South Leicestershire College	86	5.9	71	8.4	157

Starting Off (Kettering) Ltd.					
Stephenson College	398	27.2	80	9.5	478
TBG Learning Ltd	6	0.4	2	0.2	8
TNG Network Limited	16	1.1	10	1.2	26
Triangle Training Ltd	113	7.7	46	5.5	159
VT Training Plc	41	2.8	13	1.5	54
Grand Total	1464	100.0	840	100.0	2304

Providers	2008/09				
	Apprenticeship		Advanced Apprenticeship		Total
		%		%	
	No.	%	No.	%	
Automotive Transport Training Limited	6	0.4	5	0.5	11
Barbon Limited		0.0		0.0	
Brooksby Melton College	126	8.8	27	2.8	153
Carter & Carter Group Plc		0.0		0.0	
Constant Browning Edmonds Limited		0.0		0.0	
England And Wales Cricket Board Limited	0	0.0	71	7.3	71
Heart Of England Training Limited	170	11.9	32	3.3	202
In Training (ALD) Ltd		0.0		0.0	
In Training (CBE) Ltd	8	0.5	4	0.4	12
Institute Of Swimming Limited	0	0.0	258	26.6	258
JHP Group Limited	13	0.9	1	0.1	14
Kaplan Financial Limited	1	0.1	8	0.8	9
Leicester College	184	12.8	93	9.6	277
Leicester City Council	2	0.1	0	0.0	2
Leicestershire County Council	9	0.7	5	0.5	15
Leicestershire Engineering Training Group Limited		0.0		0.0	
Loughborough College	66	4.6	131	13.5	197
Mardell Associates Limited	1	0.1	9	0.9	10
Mark Bremner	3	0.2	2	0.2	6
Newcastle College Construction Limited	56	3.9	0	0.0	56
North Warwickshire And Hinckley College	58	4.0	37	3.8	95
Northampton College	1	0.1	0	0.0	1
Potential (2000) Limited		0.0		0.0	
Protocol Skills Limited	28	1.9	5	0.5	32
Rathbone Training		0.0		0.0	
Slack & Parr Limited	0	0.0	25	2.5	25
South Leicestershire College	79	5.5	100	10.3	179
Starting Off (Kettering) Ltd.	0	0.0	2	0.2	2
Stephenson College	464	32.3	92	9.5	557
TBG Learning Ltd	8	0.5	0	0.0	8
TNG Network Limited	17	1.2	4	0.4	21
Triangle Training Ltd	138	9.6	60	6.2	198
VT Training Plc		0.0		0.0	
Grand Total	1438	100.0	970	100.0	2408

NB: The data shows an average of learners undertaking an Apprenticeship in a given month over a 12 month period. Source: ILR - WBL and E2E 2007/08 Drill Downs, 'In Learning' Data ILR Employer Responsive Drill Downs 2008/09, Period 8 (March 2009)

- 75 Stephenson College, Leicester College, Institute Of Swimming Limited, Heart Of England Training Limited, South Leicestershire College, Loughborough College and Triangle Training LTD and Brooksby Melton College were some of the main Providers delivering Apprenticeships funded by Leicestershire LSC.
- 76 Table 41 provides a breakdown of providers funded by Leicestershire LSC in 2007/08 that had learners with learning difficulties and/or disabilities undertaking Apprenticeships.

Table 41: Number of 16-18 Apprenticeship learners with a learning difficulty and/or disability (LLDD), by Providers funded by Leicestershire LSC, 2007/08

Provider	2007/08 - LLLD	
	No.	%
Automotive Transport Training Limited	0	0
Barbon Limited	2	1.6
Brooksby Melton College	8	5.9
Carter & Carter Group Plc	3	2.4
Constant Browning Edmonds Limited	6	5.0
England And Wales Cricket Board Limited	2	1.6
Heart Of England Training Limited	21	16.4
In Training (ALD) Ltd	2	1.2
In Training (CBE) Ltd	1	1.0
Institute Of Swimming Limited	30	23.7
JHP Group Limited	0	0.0
Kaplan Financial Limited	1	0.7
Leicester College	9	7.0
Leicestershire County Council	0	0.0
Leicestershire Engineering Training Group Limited	3	2.6
Loughborough College	6	5.0
Mardell Associates Limited	2	1.4
Mark Bremner	0	0.0
North Warwickshire And Hinckley College	6	4.7
Potential (2000) Limited	0	0.0
Protocol Skills Limited	3	2.1
Rathbone Training	10	7.7
Slack & Parr Limited	1	0.8
South Leicestershire College	2	1.4
Stephenson College	7	5.3
TBG Learning Ltd	0	0.0
TNG Network Limited	0	0.0
Triangle Training Ltd	1	0.8
VT Training Plc	2	1.6
Leicestershire Total	127	100

Source: ILR - WBL and E2E 2007/08 Drill Downs, 'In Learning' Data. NB: The data shows an average of learners undertaking an Apprenticeship in a given month over a 12 month period

- 77 The Institute of Swimming Limited and the Heart of England Training Limited had a higher proportion of learners with learning difficulties and/or disabilities undertaking Apprenticeships compared to other Providers funded by Leicestershire LSC.

Apprenticeship achievements

78 The table below presents overall 2007/08 success rates for Apprenticeship delivery by Providers funded by Leicestershire LSC.

Table 42: 2007/08 Apprenticeship Framework Overall Success Rates, Providers funded by Leicestershire LSC

PROVIDER	Apprenticeships		Advanced Apprenticeships		Overall	
	Frameworks	Overall Success rate	Frameworks	Overall Success rate	Frameworks	Overall Success rate
Automotive Transport Training Limited	3	38%	3	100%	6	55%
Barbon Limited	8	24%	-	-	8	24%
Brooksby Melton College	55	71%	26	100%	81	78%
Constant Browning Edmonds Limited	7	64%	2	100%	9	69%
Heart Of England Training Limited	98	74%	9	82%	107	75%
Leicester College	81	62%	35	55%	116	60%
Leicestershire County Council	2	67%	8	100%	10	91%
Leicestershire Engineering Training Group Limited	5	16%	4	24%	9	18%
Loughborough College	23	68%	4	50%	27	64%
Mardell Associates Limited	4	80%	6	100%	10	91%
North Warwickshire And Hinckley College	56	79%	5	71%	61	78%
Protocol Skills Limited	16	46%	1	33%	17	45%
Rathbone Training	32	52%	-	-	32	52%
Slack & Parr Limited	-	-	6	86%	6	86%
South Leicestershire College	61	60%	16	84%	77	64%
Stephenson College	108	67%	25	81%	133	69%
TBG Learning Ltd	7	70%	2	50%	9	64%
TNG Network Limited	5	50%	5	71%	10	59%
Triangle Training Ltd	47	77%	5	71%	52	76%
Vt Training Plc	41	68%	3	30%	44	63%
Kaplan Financial Limited	6	100%	11	79%	17	85%
England And Wales Cricket Board Limited	-	-	3	23%	3	23%
In Training (CBE) Ltd	1	100%	-	-	1	100%
Leicestershire Total	666	64%	179	67%	845	64%
East Midlands Total	3,781	64%	952	66%	4,733	65%

Source: ILR - WBL New Measures of Success Rates Drill Downs 2007/08

79 Leicestershire LSC's overall success rate in 2007/08 was slightly below the regional average (64%).

80 Of those Providers with a higher volume of successful Framework completions, the following had good success rates which were above the local and regional average: Brooksby Melton College (78%); Heart Of England Training Limited (75%); North Warwickshire And Hinckley College (78%), Triangle Training Ltd (76%) and Stephenson College (69%).

Apprenticeship funding

Table 43: Funding for Leicestershire LSC Apprenticeship providers 2008/09

Apprenticeship training providers	Original 2008/09 contract value
Automotive Transport Training Limited	£59,160.18
Brooksby Melton College	£583,036.68
England and Wales Cricket Board Limited	£278,061.57
Heart Of England Training Limited	£502,650.81
Institute Of Swimming Limited	£620,912.77
Intraining (CBE) Ltd	£89,667.34
JHP Group Limited	£31,936.36
Kaplan Financial Limited	£73,565.09
Leicester College	£1,328,154.36
Leicestershire County Council	£70,144.61
Loughborough College	£542,067.69
Mardell Associates Limited	£51,517.38
Mark Bremner	£18,342.47
Newcastle College Construction Limited	£272,080.55
North Warwickshire And Hinckley College	£368,075.31
Protocol Skills Limited	£118,093.23
Rathbone Training	£262,400.34
Slack & Parr Limited	£158,029.59
South Leicestershire College	£724,087.01
Stephenson College	£2,623,087.48
TBG Learning Ltd	£45,163.98
TNG Limited	£119,418.50
Triangle Training Ltd	£681,828.19
VT Training Plc	£228,221.59
Leicestershire LSC area total	£9,849,703.08

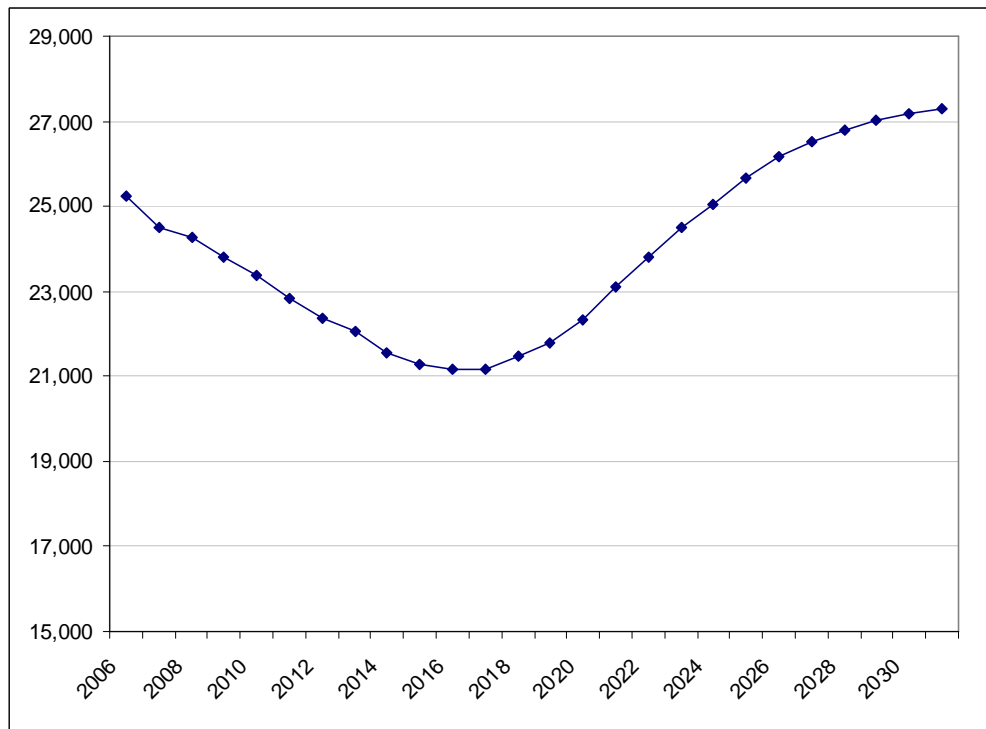
Source: AMPS – Employer Responsive, 2008/09 Original Contract Value. NB: Final year funding may differ from the totals above depending on performance against the contract.

Part 4 - Area Context

81 This section is intended to outline the changes in the 14-19 cohort following the national methodology used by the Office for National Statistics, as well as a very brief overview of the local labour market to give an indication of the demand for learning in the local area.

14-19 Population information

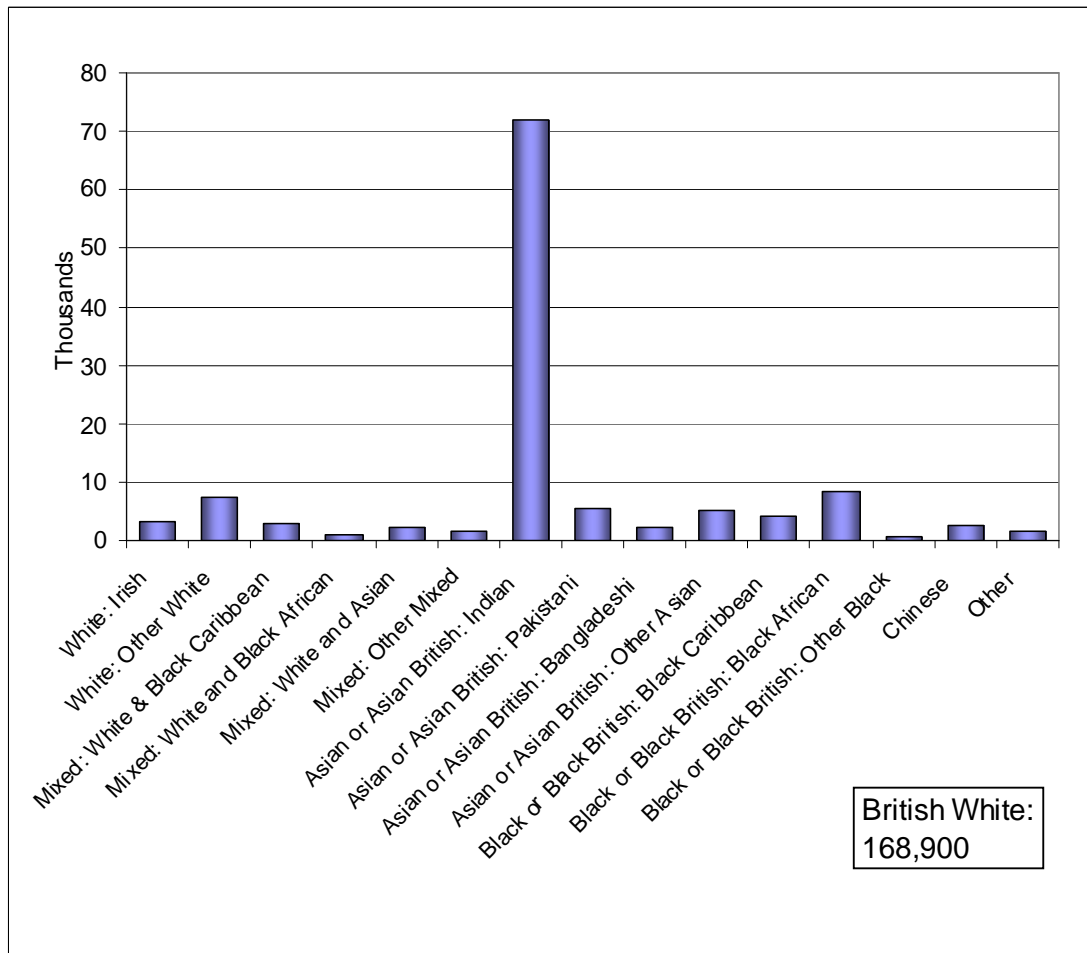
Figure 7: 14-19 population projection for Leicester City, 2006-2030



Source: ONS 2006-based population projections

82 From peak levels of 14-19 population in 2006, Leicester City will see a steady decline until 2016-17. The 2016-17 level will be around 16% lower. After 2017 the population will start to increase, returning to 2006 levels by 2024 and continuing to rise through till 2031 where they are forecast to be 8% above the 2006 level.

Figure 8: Estimate of resident population by ethnic group (all ages), 2006



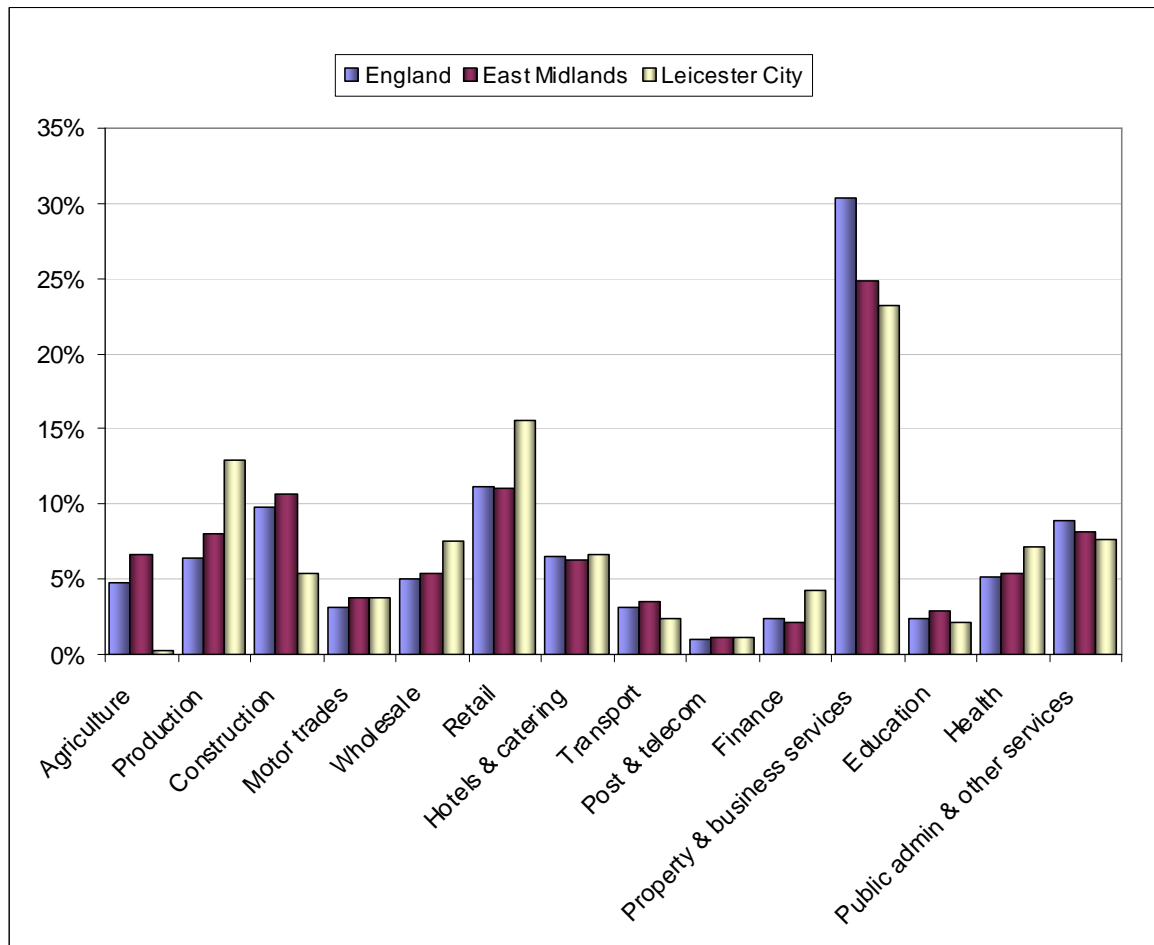
Source: ONS Estimates of resident population by ethnic group (experimental statistics)

83 The largest non-white community in Leicester City is Indian (25%). Overall 38% of the population are non-white.

Employers and employment in Leicester City

84 The largest sectors are 'Property & Business Services' (23.2%), 'Retail' (15.6%), and 'Production' (13.0%). Whilst 'Property & Business Services' and 'Retail' and also the top two sectors in the region, the third placed sector 'Production' (13.0%) is 5.9% and 6.6% higher than Regional and National levels. Construction (5.4%) is around half the levels of both Region and England.

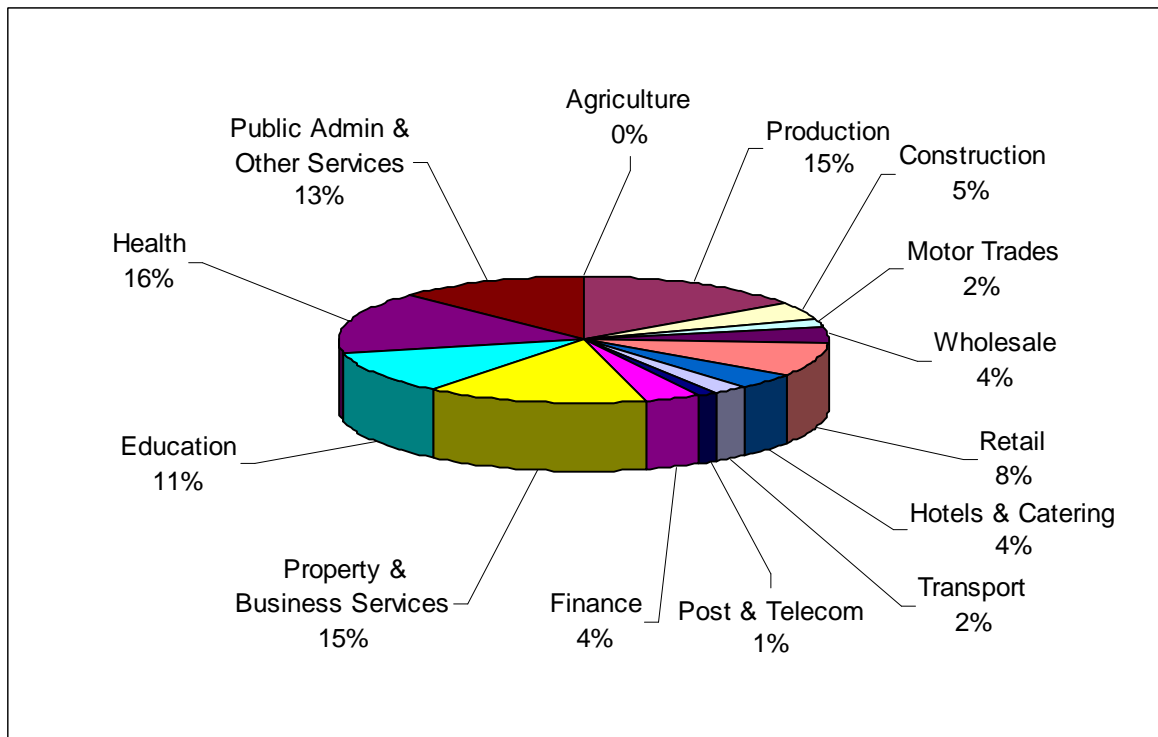
Figure 9: Distribution of businesses by broad industrial group, 2008



Source: Inter-Departmental Business Register (IDBR)

85 The sectors employing the largest numbers of people are 'Health' (20%, 17900 persons), 'Production' (15%, 24700 persons) and 'Property & Business Services' (15%, 23900 persons).

Figure 10: Employees in Leicester City by sector, 2007

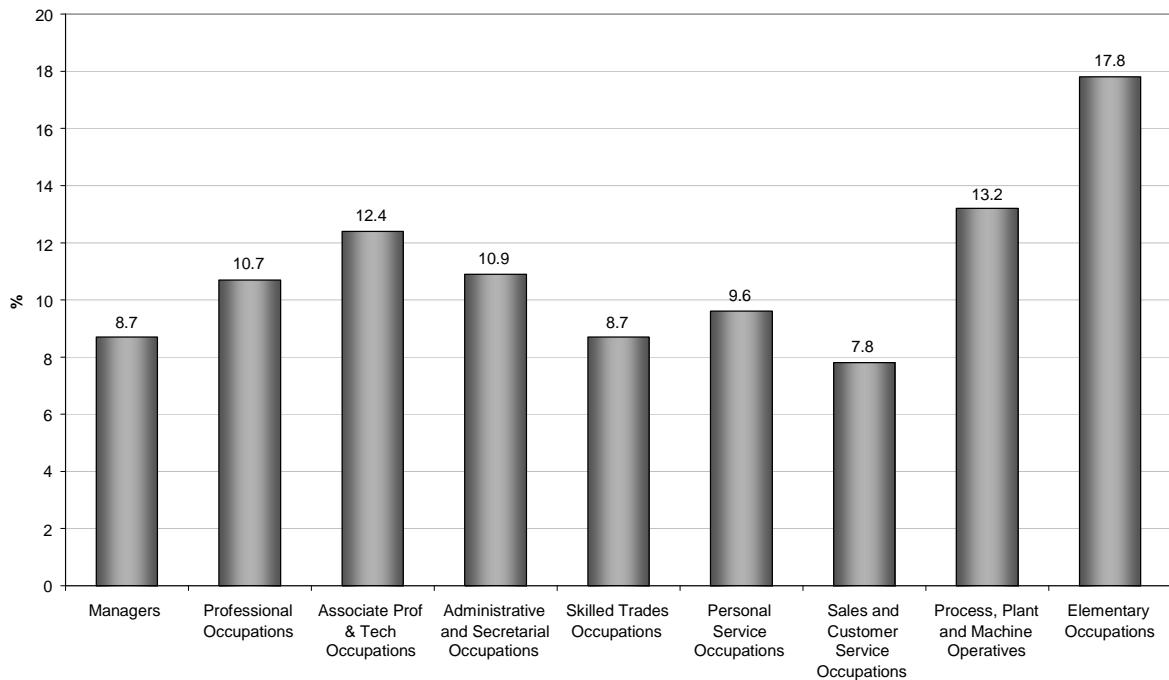


Source: Annual Business Inquiry (ABI), 2007

86 The sectors employing the largest numbers of people are 'Health' (20%, 17900 persons), 'Production' (15%, 24700 persons) and 'Property & Business Services' (15%, 23900 persons).

Skills

Figure 11: Employment by occupation group, 2007/08



Source: Annual Population Survey (APS), July 2007-June 2008

- 87 'Managers', 'Professional Occupations' and 'Associate Professional and Technical' are grouped together as 'Higher Occupations'. 'Administrative and Secretarial', 'Skilled Trades Occupations', 'Personal Service Occupations' and 'Sales and Customer Service Occupations' are grouped together as 'Intermediate Occupations'. 'Process, Plant and Machine Operators' and 'Elementary Occupations' are grouped together as 'Lower Occupations'. Recent and ongoing change is moving away from 'Lower' occupations towards 'Intermediate' and 'Higher' occupations.
- 88 'Elementary Occupations' are the largest single group at 17.8%. 'Intermediate' occupations are the largest combined group and the movement from 'Lower' to 'Higher' occupations is slower in Leicester City than most other areas of the East Midlands.

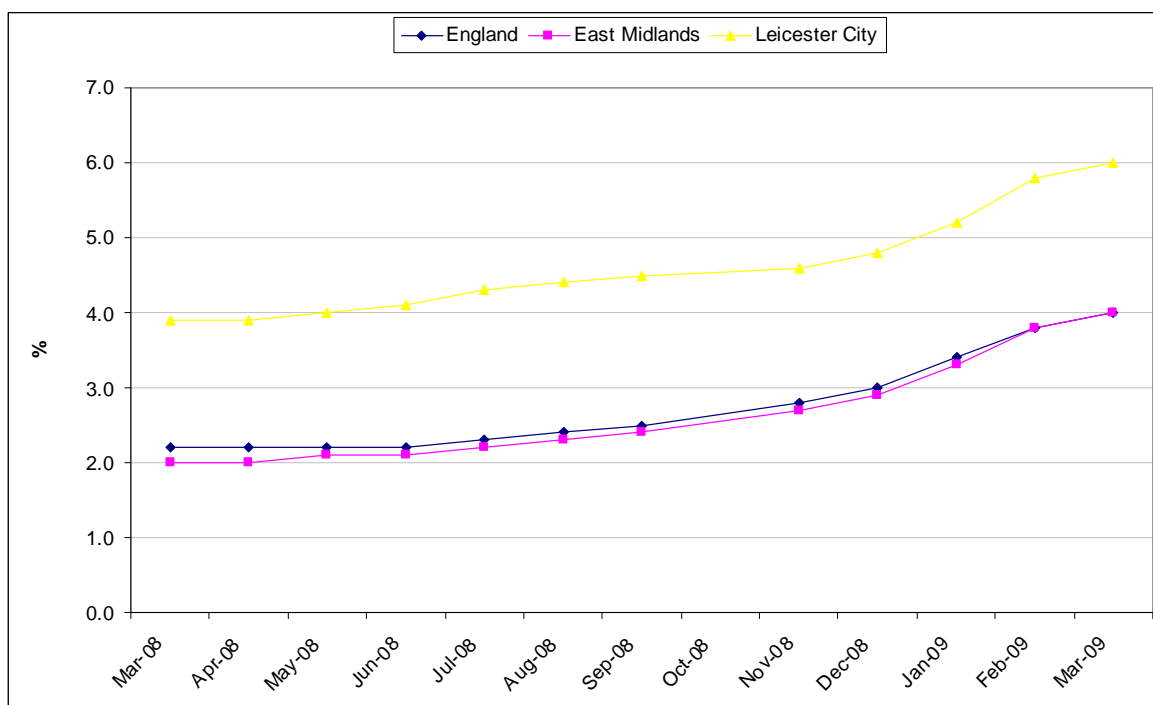
Table 44: Proportion of 19-59/64 population with qualifications by level, 2007

	Qualified to at least Level 4	Qualified to at least Level 3	Qualified to at least Level 2	Qualified lower than Level 2	Number (000s) with a qualification below Level 2	% with no qualifications	Number (000s) with no qualifications
Leicester City	24.0%	39.4%	57.6%	21.0%	36	21.4%	37
Leicestershire	28.9%	50.8%	70.9%	19.4%	72	9.7%	36
East Midlands	27.3%	47.0%	67.2%	19.7%	499	13.1%	331

Source: Annual Population Survey 2007,
<http://www.dcsf.gov.uk/rsgateway/DB/STA/t000809/Table1.xls>

Unemployment

Figure 12: Job Seekers Allowance claimant rate in Leicester City, March 2009



Source: DWP information via ONS Nomis

- 89 Leicester City has consistently shown Claimant Rates above National and Regional levels over the last year. The position in March 09 is 6%, which is 2.0 percentage points higher. Leicester City currently has the highest claimant rate in East Midlands. Following a period of step increase between November 2008 and February 2009, March 09 is the first month that has shown a slowing of the rate of increase.

Part 5 - Sub-Regional Group (SRG) overview

- 90 This section is intended to bring together issues from each local authority within the Sub-Regional Group to inform the planning discussions by presenting a more rounded picture.
- 91 Participation of 16-18 year olds in education and training in both Leicester City and Leicestershire local authorities is good and above the regional average.
- 92 A key issue for all areas is the drop out at 17, which is significant and follows national trends.
- 93 Apprenticeship participation will be an issue in both areas. Participation will be affected by the recession as fewer employers come forward to offer places.
- 94 Achievement at Level 2 and 3 by age 19 is very different between the city and county. While the county has higher proportions of 19 year olds with Level 2 and Level 3 qualifications, the city has shown a faster rate of increase in achievement and has reduced the gap between the two areas.
- 95 The vast majority of Leicester city and Leicestershire 16-18 school sixth form learners access their learning within the SRG area. Very few sixth form learner, mainly from Leicestershire access school sixth form provision in other local authorities.
- 96 For resident FE learners, the majority of 16-18 learners access provision within Leicester and Leicestershire, particularly so for city residents. Leicestershire residents are more likely to access FE in other districts, primarily within the East Midlands.

