

16–19 Strategic Analysis for Leicestershire

June 2009

Of interest to Local Authorities and other
Partners and Stakeholders involved in
14-19 planning

16-19 Strategic Analysis Leicestershire

15 June 2009

Table of contents:

Introduction.....	2
Background and issues for consideration	4
Part 1 - 16-18 Resident learner participation.....	6
Analysis of participation by learning type 2007/08	6
Further Education (FE)	6
Apprenticeships	7
School Sixth Forms	11
Entry to Employment	14
September Guarantee	17
Travel to learn patterns	18
Further Education	18
School Sixth Forms	21
Achievement	22
FE Achievements	22
Apprenticeship completions.....	23
School Sixth Forms	23
Part 2 - Progress to PSA targets at 19.....	25
Part 3 - Provision within Leicestershire.....	28
Further Education providers.....	28
FE participation	28
FE achievements.....	31
FE Funding.....	33
School Sixth Forms	33
School Sixth Forms participation	33
School Sixth Forms achievements	34
School Sixth Form funding	35
Apprenticeships	36
Apprenticeship participation	36
Apprenticeship achievements.....	39
Apprenticeship funding	41
Part 4 - Area Context.....	42
14-19 Population information	42
Employers and Employment in Leicestershire	44
Skills.....	46
Unemployment.....	47
Part 5 - Sub-Regional Group (SRG) overview	48

Introduction

This 16-19 report is the first in a series of three to be published for Local Authorities over the next 3 months. The purpose of the reports is to provide, in the Machinery of Government Transition year, sufficient details of 16-19 provision and learners for Local Authorities to be able to:

- a) Complement their existing strategic planning for 14-19 in the context of economic and employment information for their area.
- b) Develop detailed commissioning plans at LA and Strategic Regional Group levels.
- c) Focus on specific areas for improvement in their planning.
- d) Understand the provision accessed by their residents.
- e) Understand the scope and quality of the provision for those learners, wherever they are resident who choose to learn within providers situated within the LA's boundaries.

What the Series One report contains

Series one report contains sufficient detail of provision accessed by residents to enable points (a), (c) and (d) above. In addition, by its focus on providers it also allows LAs to achieve points (b) and (e) above.

Series Two and Three reports

These reports will provide more detail of specific provision and groups of learners, such as those with Learning Difficulties and/or Disabilities (LDD) and those on Entry to Employment (E2E) programmes. In addition details of the curriculum offered in 16-18 institutions and the characteristics of learners studying those curricula will be provided. It is intended that the series two and three reports will aid LAs in particular in the execution of points (b) and (c) above by increasing their understanding of need and provision. Planned final volumes of learners and funding for 2009/10 for the relevant providers in each Local Authority will also be part of series two reports.

Data for the reports

Where relevant data is published nationally by the Department for Children, Schools and Families, such as that in statistical first reports, or by the Office for National Statistics, this data has been used. Much of the remaining data comes from submissions on the Individual Learner Record (ILR) made by providers to the LSC, from school census data, or from internal LSC systems designed to deal with allocations of funding to providers and measuring targets. Since data comes in at specific times of the year for FE and schools, only whole year data is provided for these types of institutions. This restricts these data sets to 2005/06 to 2007/08. For E2E and Apprenticeships, data arrives monthly, so in-year (2008/09) data is provided in these cases.

In January, 2007, the LSC consulted with the sector on a new funding approach in the document *Delivering World-class Skills in a Demand-led System*. Following this consultation the LSC's funding approach changed significantly for 2008/09. This has had an effect on how the data is collated and aggregated together in 2008/09. Therefore it is urged that when making comparisons across these two years this change is taken into consideration.

Accessing the reports and information

The reports will be made available via the LSC's external website. Where information is confidential a separate file will be provided for LAs on disc. From July 2009, an updated data website will be available for LAs.

Background and issues for consideration

- 1 Employment in Leicestershire is above regional averages. The level of economic inactivity (16.7%) and unemployment (4.2%) is lower than both that in the region and that in England as a whole.¹ The largest number of **employers** is to be found in retail and property/business services, construction and retail. Compared to the region as a whole, there are fewer employers in the sectors of health and public administration. The greatest proportions of **employees** are to be found in production, property/business services and retail.
- 2 Leicestershire is slightly above the region in the proportion of workers employed as managers and in professional occupations than in the region as a whole, and there are less people employed as administrative/secretarial, sales and elementary occupations than in the region.
- 3 The levels of qualification in the population are amongst the highest in the region. 71% of the population has a Level 2 qualification and 51% a Level 3. 29% are qualified to Level 4 or above. 29% of the adult population have qualifications below Level 2 or no qualifications at all. For the East Midlands this is 33%.
- 4 The 14-19 cohort had been increasing in Leicestershire but peaked in 2008/09 and is predicted to decline until 2019 when sharp growth is forecast. Participation in education of 16 and 17 year olds is above regional and national averages - 81% were in education and training post-16 in 2006 compared with 82% in England and 79% in the East Midlands.² There are significant differences between participation at 16 and that at 17. 10% less of 17 year olds (76%) were participating compared with the proportion of 16 year olds (86%). This is similar to the national trend. The trend in participation amongst 17 year olds in Leicestershire is fairly static but remains just above national averages.
- 5 More young people choose to learn in School Sixth Forms (SSF) in Leicestershire than in the region as a whole. A small percentage (4%) of those who select school sixth forms travel into neighbouring districts to attend school sixth forms (mainly Leicester and Nottinghamshire). This appears to reflect convenience of travel patterns rather than issues of quality. Participation in Apprenticeships had decreased slightly between 2006/07 and 2007/08, but has dropped more sharply in 2008/09, largely due to the lack of employers offering Apprenticeship places as the economic downturn has begun to bite. Participation in Further Education (FE) showed a decrease between 2008/09 and 2007/08 but the number of 16-18 learners is still higher than in 2006/07.
- 6 Achievement at Level 2 and Level 3 is above regional averages. At 75.6% for Level 2, Leicestershire is just below the national average of 76.7%. In terms of GCSE results, Leicestershire pupils performed above the regional average for achievement of five GCSEs grades A*-C in 2007/08 and the area is several percentage points above the national average (47.3%) when Maths and English are included in the five (51.7%)

¹ Annual Population Survey October 2007-September 2008

² DCSF, SFR 13/2008: Participation in education and WBL of 16 and 17 year olds by LEAS in England

- 7 For Level 3 the Leicestershire average is even closer to the national average at 49.7% (compared with 49.8%) and is the second highest figure in the region (only Rutland is higher at 70.1%). Increases in the proportion of young people who have gained a Level 3 by the age of 19 has slowed in the last few years, and even showed a decrease in 2006/07.
- 8 In 2007/08, the quality of provision in FE colleges in Leicestershire improved on the previous year, and only one college was slightly below the regional average. At both Full Level 2 and Full Level 3, Leicestershire colleges have shown significant improvements in their success rates also.
- 9 Apprenticeship completion rates rose by 5.6% between 2006/07 and 2007/08. The Advanced Apprenticeship completion rate showed the most improvement in the region, and was above the regional rate of change.

Issues for consideration/improvement:

- Participation in education of 16 and 17 year olds needs to continue to improve in line with the raising of the participation age, and the drop out between 16 and 17 needs to change.
- Achievement at Level 2 and Level 3 has shown improvement but this has slowed in the last two years. This improvement needs to increase again if the area is to remain above regional averages.
- Apprenticeship participation had been decreasing and has been particularly badly affected by the economic downturn. However, the completion rates of Apprenticeships in Leicestershire have improved significantly.

Part 1 - 16-18 Resident learner participation

- 10 This section is intended to show where the young people living within Leicestershire local authority are learning and to highlight any issues relating to demand for learning within the area.

Analysis of participation by learning type 2007/08

Further Education (FE)

Table 1: East Midlands 16-18 FE learners by LA of residence

Learner LEA	2006/07 (full year)		2007/08 (full year)		2008/09 (as at March 2009)	
	Learners	% of East Midlands	Learners	% of East Midlands	Learners	% of East Midlands
Derby City	3,401	5.9%	3,575	6.0%	3,406	5.7
Derbyshire	9,644	16.8%	9,708	16.3%	9,746	16.2
Leicester City	6,637	11.5%	6,850	11.5%	7,016	11.7
Leicestershire	6,856	11.9%	7,098	11.9%	6,996	11.6
Lincolnshire	8,144	14.2%	8,400	14.1%	9,011	15.0
Northamptonshire	8,186	14.2%	8,424	14.1%	8,366	13.9
Nottingham City	4,811	8.4%	5,082	8.5%	4,965	8.3
Nottinghamshire	9,336	16.2%	9,702	16.3%	10,136	16.8
Rutland	523	0.9%	562	0.9%	525	0.9
(Unknown based on Postcode)			237	0.4%		
Total East Midlands	57,538	100.0%	59,638	100.0%	60,167	100.0%

Source: 2007/08 ILR F05 returns (FE 0506-0708 Learner Drill down) and 2008/09 ILR F02 return

- 11 There were 6,856 and 7,098 16-18 year old FE learners in 2006/07 and 2007/08 respectively. This was a growth of 3.5 % between the 2 years, which is on par with the East Midlands figure of 3.6%. In 2007/08, Leicestershire residents represented 11.9% of all 16-18 year old FE learners within East Midlands.

Table 2: Leicestershire 16-18 FE learners by gender

	Year	Female		Male	
Leicestershire	2006/07	3,202	46.7%	3,654	53.3%
	2007/08	3,454	48.7%	3,644	51.3%
East Midlands	2006/07	29,226	50.8%	28,312	49.2%
	2007/08	30,217	50.7%	29,421	49.3%

Source: 2007/08 ILR F05 returns (FE 0506-0708 Learner Drill down)

- 12 Using LSC data returns, the female/male gender split in FE learners in 2006/07 and 2007/08 was 46.7% to 53.3% and 48.7% to 51.3% respectively. The comparable figures for East Midlands were 50.8% to 49.2% and 50.7% to 49.3% respectively. Using Office of National Statistics (ONS) Mid 2007

Population Estimates the 16-18 year old population female/ male split in Leicestershire was 48.1% to 51.9%.

Table 3: Leicestershire 16-18 FE learners by ethnicity

	Year	Asian		Black		Chinese		Mixed		Other		Unknown		White	
Leicestershire	2006/07	350	5%	87	1%	18	0%	176	3%	44	1%	134	2%	6,047	88%
	2007/08	355	5%	89	1%	21	0%	166	2%	59	1%	84	1%	6,324	89%
East Midlands	2006/07	4,935	9%	1,769	3%	164	0%	1,781	3%	487	1%	669	1%	47,733	83%
	2007/08	4,973	8%	1,881	3%	174	0%	1,839	3%	471	1%	656	1%	49,644	83%

Source: 2007/08 ILR F05 returns (FE 0506-0708 Learner Drill down)

- 13 LSC data returns show that the white community in Leicestershire represented 88% and 89% of the population in 2006/07 and 2007/08 respectively. This is above the East Midlands average of 83%. In 2007/08 the Asian and Mixed communities represented 5% and 2% of the population respectively. The England split white to non-white is 88.7% to 11.3%. (ONS MID 2006 Experimental Ethnicity Estimates).

Table 4: Leicestershire 16-18 FE learners by highest level of study

	Year	Notional Level									
		Entry and Level 1		Level 2		Level 3		Level 4, 5 and Higher		Other (including Mixed)	
Leicestershire	2006/07	1,467	21%	2,223	32%	3,157	46%	7	0%	2	0%
	2007/08	1,485	21%	2,278	32%	3,315	47%	7	0%	13	0%
East Midlands	2006/07	10,785	19%	17,631	31%	28,939	50%	65	0%	118	0%
	2007/08	12,359	21%	17,496	29%	29,556	50%	53	0%	174	0%

Source: 2007/08 ILR F05 returns (FE 0506-0708 Learner Drill down)

- 14 In 2007/08, nearly half of 16-18 FE learners resident in Leicestershire were studying at Level 3, slightly below the regional average of 50%. A third were studying at Level 2, slightly above the regional average of 29%. The remaining 21% were studying at Entry and Level 1 and this pattern did not change much between 2006/07 and 2007/08.

Apprenticeships

- 15 This section examines the participation of learners living in the Leicestershire LA area who have undertaken or are undertaking Apprenticeships. The data includes learners who have been funded by East Midlands LSC areas, other LSC areas in England or the National Employer Service. An average of the number of learners undertaking Apprenticeships in a given month over a 12 month period is used to show participation in the 2006/07 and 2007/08 tables.

Table 5: Resident Learners by LA Level participating on Apprenticeships and proportion within the East Midlands

Local Authority	2006/07	% East Midlands	2007/08	% East Midlands
Derby City	832	6.0	843	6.3
Derbyshire	2769	20.1	2657	19.7
Leicester City	519	3.8	477	3.5
Leicestershire	1949	14.1	1899	14.1
Lincolnshire	2128	15.4	2013	14.9
Northamptonshire	2043	14.8	1994	14.8
Nottingham City	755	5.5	774	5.7
Nottinghamshire	2740	19.9	2767	20.5
Rutland	67	0.5	55	0.4
EAST MIDLANDS	13,802	100.0	13,479	100.0

Source: ILR - WBL AND E2E DRILL DOWNS 2006/07 and 2007/08 (July 2007 and July 2008)
 'Average in Learning' data

- 16 As a proportion of the region, 14.1% of resident learners from Leicestershire LA area were undertaking Apprenticeships in 2007/08.

Table 6: 16-18 Apprenticeship Participation by Programme Level, 2006/07 – 2007/08

Area	Programme Level	2006/07	2007/08	% change 2006/07 - 2007/08
Leicestershire LA	Apprenticeships	1199	1157	-3.5
	Advanced Apprenticeships	749	742	-1.0
	Total	1949	1899	-2.5
East Midlands	Apprenticeships	8905	8719	-2.1
	Advanced Apprenticeships	4897	4760	-2.8
	Total	13,802	13,479	-2.3

Source: ILR - WBL AND E2E DRILL DOWNS 2006/07 and 2007/08 (July 2007 and July 2008)
 'Average in Learning' data

- 17 There has been a reduction in overall Apprenticeship participation in 2007/08 from 2006/07 amongst Leicestershire LAs learner residents (-2.5%). This decrease was similar to the regional average.
- 18 At the Programme level, both Apprenticeships and Advanced Apprenticeship saw a decline in learner participation. Reductions were also evident in the region overall for both Programme levels.

Table 7: 16-18 Overall Apprenticeship Programme Participation by Gender, 2006/07 – 2007/08

Area	Gender	2006/07		2007/08	
		Number	%	Number	%
Leicestershire LA	Female	612	31.4	613	32.3
	Male	1336	68.6	1286	67.7
	Total	1949	100.0	1899	100.0
East Midlands	Female	4,958	35.9	4,916	36.5
	Male	8,844	64.1	8,563	63.5
	Total	13,802	100.0	13,479	100.0

Source: ILR - WBL AND E2E DRILL DOWNS 2006/07 and 2007/08 (July 2007 and July 2008)
'Average in Learning' data

- 19 There was a lower proportion of females from Leicestershire LA compared to the region undertaking Apprenticeships.
- 20 The volume of female participation from 2006/07 to 2007/08 has remained stable but male participation has decreased. In contrast, the region has seen a decrease in both males and female participation.

Table 8: 16-18 Overall Apprenticeship Programme Participation by Ethnicity, 2006/07 – 2007/08

Area	Ethnicity	2006/07		2007/08	
		Number	%	Number	%
Leicestershire LA	Ethnic Minority	39	2.0	46	2.4
	White	1,903	97.6	1,849	97.4
	Not Known	7	0.4	4	0.2
	Total	1,949	100.0	1,899	100.0
East Midlands	Ethnic Minority	420	3.0	472	3.5
	White	13,335	96.6	12,953	96.1
	Not Known	47	0.3	54	0.4
	Total	13,802	100.0	13,479	100.0

Source: ILR - WBL AND E2E DRILL DOWNS 2006/07 and 2007/08 (July 2007 and July 2008)
'Average in Learning' data

- 21 Compared to the regional proportion, there was a slightly lower proportion of minority ethnic individuals living in Leicestershire who were participating on Apprenticeships in 2006/07 and 2007/08 reflecting the ethnicity of the local population (see Figure 8).

Table 9: 16-18 Overall Apprenticeship Programme Participation by Learners with Learning Difficulties and/or Disabilities, 2006/07 – 2007/08

Local Authority	2006/07				2007/08			
	No Disability/Learning Difficulty	Not Known/Not Provided	Disability/Learning Difficulty Recorded	% with Disability/Learning Difficulty	No Disability/Learning Difficulty	Not Known/Not Provided	Disability/Learning Difficulty Recorded	% with Disability/Learning Difficulty
Leicestershire	1818	4	126	6.5	1793	7	100	5.2
East Midlands	12987	53	762	5.5	12768	65	646	4.8

Source: ILR - WBL AND E2E DRILL DOWNS 2006/07 and 2007/08 (July 2007 and July 2008)
'Average in Learning' data

- 22 Learners on Apprenticeships, as in FE, are asked whether they feel they have a learning difficulty and/or disability and so the numbers shown here and in later tables reflect learners who have self-declared a difficulty or disability.
- 23 The proportion and volume of learners with a learning disability and/or disability from Leicestershire undertaking Apprenticeships has decreased in 2007/08 from 2006/07. This is a reflection of the overall regional picture.

2008/09 Data – Period 8 (latest to March 2009)

- 24 Latest information on Apprenticeships is available up to March 2009 in the academic year. The data below provides provisional indications of current participation on the Apprenticeship programme by learners resident in Leicestershire. Data as at March 2008 for 2007/08 is used to compare the current picture.

Table 10: 16-18 Apprenticeship Participation, 2008/09

Area	Programme Level	2007/08 (March 08)	2008/09 (March 09)	2007/8 - 2008/09 Change	
				Number	% Change
Leicestershire	Apprenticeship	1233	1,100	-133	-10.8
	Advanced Apprenticeship	784	752	-32	-4.1
	Total	2017	1,852	-165	-8.2
East Midlands	Apprenticeship	9036	8,577	-459	-5.1
	Advanced Apprenticeship	4990	4,748	-242	-4.9
	Total	14027	13,325	-702	-5.0

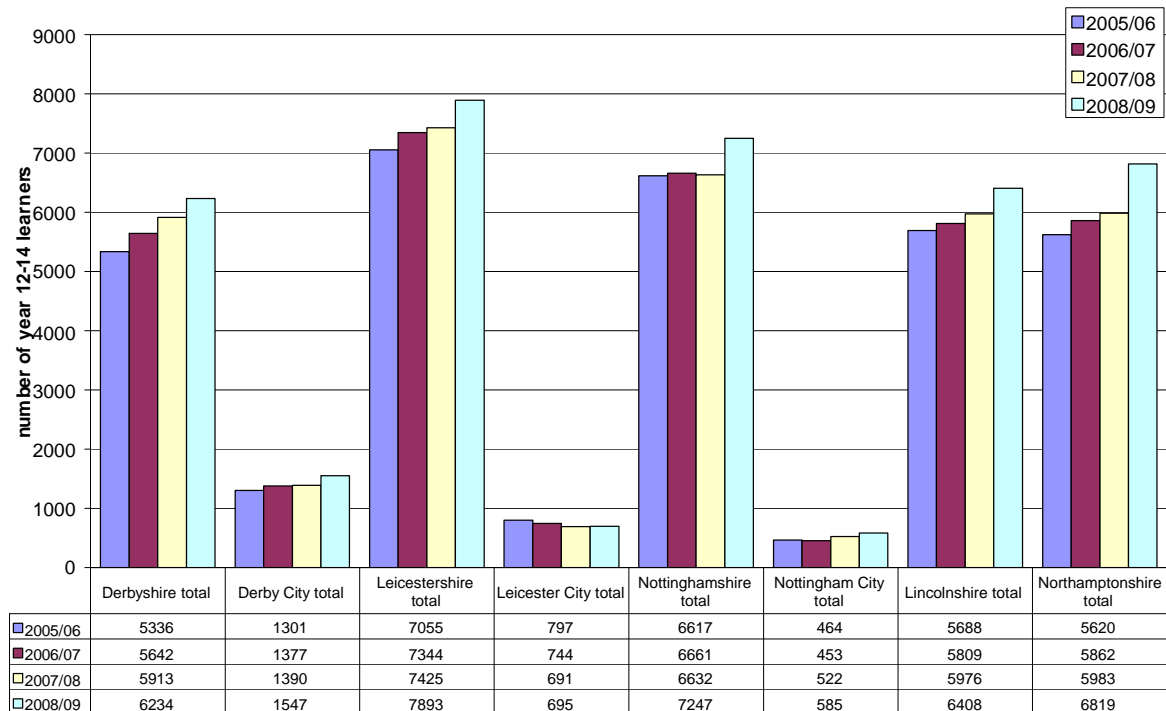
Source: ILR - Employer Responsive Drill Downs 2008/09, Period 8 (March 2009), WBL and E2E 2007/08 Period 8 Drill Downs (March 2008)

- 25 Overall, Apprenticeship participation is currently 8% lower in 2008/09 compared to the same period in 2007/08 amongst learners residing in Leicestershire (-165 learners). This is higher than the regional average. .
- 26 At the Programme Level, a greater reduction has been seen in Apprenticeships (Level 2) than for Advanced Apprenticeships.

School Sixth Forms

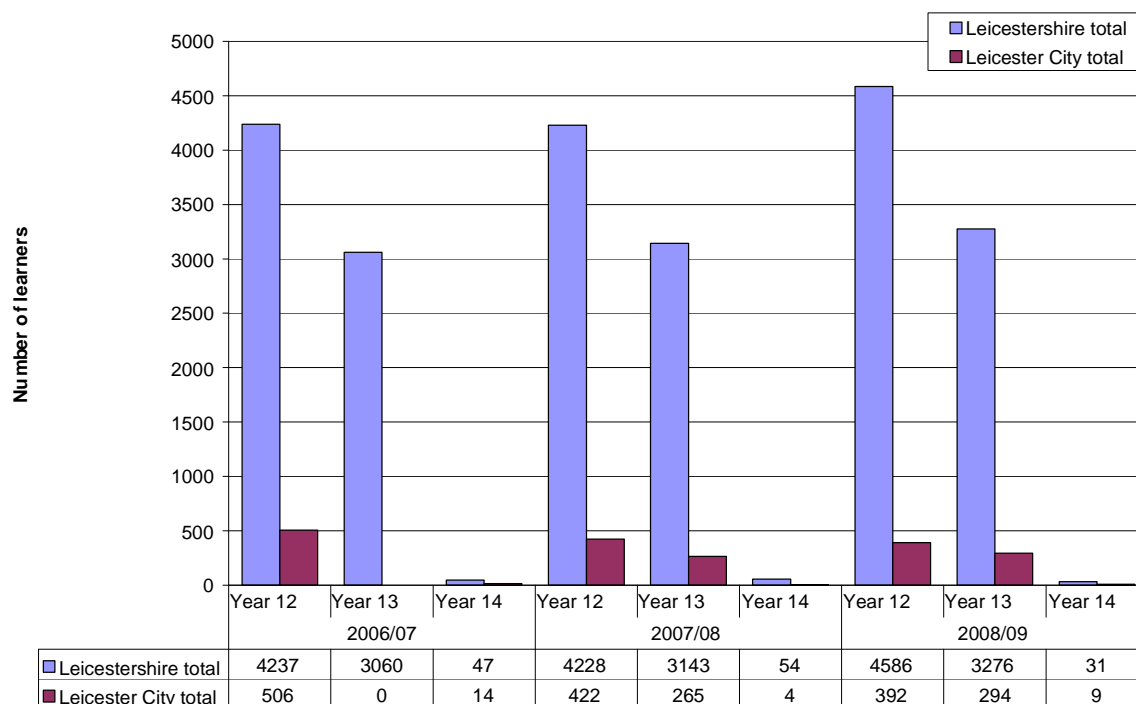
27 There are 18 schools with sixth forms in Leicestershire. 28.6% of the total in learning population in the city learn at these institutions in 2008/09. Over the last 4 years, the school sixth form population has grown by 12%.

Figure 1: 16-18 learner numbers in school sixth forms, 2006/07-2008/09



Source: PLASC, 2006-2008

Figure 2: Learner numbers in Years 12-14 for Leicestershire and Leicester, 2006/07-2008/09



Source: PLASC, 2006-2008

28 There is a 29% decrease in learners in the cohort between years 12 and 13 in Leicestershire School Sixth Forms. A very small percentage stayed on in learning into year 14.

Table 11: 16-18 learners attending a Schools Sixth Form funded by the LSC East Midlands: Gender breakdown (% of total group)

School LA	2007/08 Learners		2008/09 Learners	
	Female %	Male %	Female %	Male %
Derby City	54.5	45.5	54.2	45.8
Leicester City	51.5	48.5	49.4	50.6
Nottingham City	57.3	42.7	56.4	43.6
Nottinghamshire	53.1	46.9	53.3	46.7
Derbyshire	53.4	46.6	53.0	47.0
Leicestershire	52.3	47.7	50.5	49.5
Lincolnshire	53.2	46.8	53.1	46.9
Northamptonshire	53.3	46.7	52.6	47.4
East Midlands	53.1	46.9	52.5	47.5

Source: LSC MI 2007/08 and 2008/09 Schools Sixth Form Analysis

29 The proportional gender split of those attending a Schools Sixth Form in Leicestershire is similar to the region both in 2007/08 with more females participating than males. However, in 2008/09 the proportion in Leicestershire had changed to almost 50/50 split.

Table 12: 16-18 learners attending a Schools Sixth Form funded by the LSC East Midlands: Ethnicity breakdown (% of total group)³

LA Area	Year	Any Other	Asian or Asian British	Black or Black British	Chinese	Mixed Heritage	Not Known/Not Provided	White
Derby	2007/08	0.2	16.0	2.6	1.0	2.5	2.2	75.4
	2008/09	0.7	14.7	2.1	0.8	2.3	1.3	78.1
Leicester	2007/08	1.0	40.1	5.8	0.0	7.1	0.9	45.1
	2008/09	1.2	38.6	6.4	0.1	5.7	1.9	46.1
Nottingham	2007/08	0.2	14.5	10.7	1.1	4.5	0.9	68.0
	2008/09	1.0	19.1	8.9	0.5	5.2	0.2	65.1
Nottinghamshire	2007/08	0.4	2.4	0.9	0.6	1.1	0.8	93.9
	2008/09	0.4	2.5	0.8	0.8	1.4	1.4	92.6
Derbyshire	2007/08	0.1	0.9	0.2	0.4	1.2	0.6	96.6
	2008/09	0.2	0.8	0.2	0.3	1.1	0.8	96.5
Leicestershire	2007/08	0.3	12.1	0.5	0.5	2.0	2.0	82.5
	2008/09	0.3	11.8	0.6	0.5	2.2	2.6	82.0
Lincolnshire	2007/08	0.5	1.3	0.6	0.7	1.1	0.9	95.0
	2008/09	0.3	1.1	0.6	0.7	1.1	1.1	95.1
Northamptonshire	2007/08	0.4	4.6	2.3	0.5	2.5	1.5	88.2
	2008/09	0.4	4.6	2.9	0.5	2.7	1.2	87.9
East Midlands	2007/08	0.3	5.9	1.2	0.6	1.8	1.2	89.0
	2008/09	0.4	5.7	1.3	0.6	1.9	1.4	88.7

Source: LSC MI 2007/08 and 2008/09 Schools Sixth Form Analysis

- 30 Compared to the region as a whole, Schools Sixth Forms in Leicestershire had a higher proportion of learners from an Asian or Asian British background in 2007/08 and 2008/09.

³ Asian or Asian British includes those who are Indian, Pakistani or Bangladeshi or from any other Asian background. Black or Black British includes those with an African or Caribbean heritage or from any other Black background. Mixed heritage includes those who are White and Asian, White and Black African, White and Black Caribbean or from any other Mixed heritage background. White includes those who are White British, White Irish or any other White background.

Table 13: 16-18 learners attending a Schools Sixth Form funded by the LSC East Midlands: Special Educational Needs (SEN) (% of total group)

LA NAME	2007/08 Learners				2008/09 Learners			
	School/Early Years Action %	School/Early Years Action + %	Statement %	No SEN %	School/Early Years Action %	School/Early Years Action + %	Statement %	No SEN %
Derby	1.1	0.1	1.0	97.7	4.7	0.7	1.1	93.6
Leicester	5.6	2.4	0.3	91.7	6.9	3.1	0.7	89.3
Nottingham	5.6	2.4	0.4	91.5	5.5	2.1	0.3	92.1
Nottinghamshire	4.0	0.5	0.4	95.1	4.8	0.8	0.6	93.8
Derbyshire	1.9	0.8	0.4	96.8	1.5	1.1	0.6	96.9
Leicestershire	1.9	1.0	1.1	96.0	2.4	1.1	1.0	95.5
Lincolnshire	2.5	1.1	0.9	95.4	4.2	1.5	0.9	93.4
Northamptonshire	3.2	0.8	0.8	95.2	5.7	1.2	0.9	92.2
East Midlands	2.8	0.9	0.7	95.6	3.8	1.2	0.8	94.2

Source: LSC MI 2007/08 and 2008/09 Schools Sixth Form Analysis

- 31 Table 13 shows the proportion of 16-18 learners with Special Educational Needs (SEN) attending Schools Sixth Forms across local authority areas in the East Midlands in 2007/8 and 2008/09. The variation of proportions of learners with SEN occurs across the different local authority areas partly due to the different policies to statements applied in different localities.
- 32 Further detailed information about learners with Special Educational Needs will be provided in a separate report to be published in the next couple months focusing on learners with learning difficulties and/or disabilities.

Entry to Employment

- 33 This section provides summary information about learners who have undertaken E2E learning in 2006/07 and 2007/08. The data is shown by the local authority in which the learner was living in during this period and also includes provision contracted outside of the region..
- 34 More detailed information about the learners in terms of gender, ethnicity and learning difficulties and/or disabilities will be available in the next phase of these packs at the end of June.

Table 14: E2E trends in Starts, Occupancy*, and Average Length of Stay 2006/07 – 2007/08: learners living in local authority areas

2005/06 -2007/08 Summary	2006/07	2007/08	2006/07	2007/08	2006/07	2007/08	2006/07	2007/08
	Starts		Participation (Occupancy)		Total Leavers		Average Stay (weeks)	
Derby City	550	473	196	182	524	431	15.5	16.2
Derbyshire	811	886	286	336	732	804	14.8	16.0
Leicester City	356	401	142	161	337	376	16.3	16.8
LEICESTERSHIRE	312	380	119	148	318	342	15.1	15.9
Lincolnshire	621	613	272	297	573	553	20.9	19.1
Northamptonshire	711	676	274	287	652	694	17.2	17.9
Nottingham City	314	335	143	178	285	288	21.9	23.5
Nottinghamshire	662	609	323	438	636	552	21.2	24.4
Rutland	7	3	5	7	11	1	22.2	19.3
EAST MIDLANDS	4344	4376	1760	2033	4068	4041	17.8	18.5

Source: ILR - WBL and E2E drill downs 2006/07 – 2007/08. *Occupancy shows the average number of learners on an E2E programme in one month.

- 35 Leicestershire has seen an increase in starts and participation in E2E between 2006/07 and 2007/08, which reflects the overall regional increase.
- 36 However, the average stay in E2E learning (by weeks) has increased marginally during this period. This suggests that the more difficult to reach learners are enrolling on the programme and requiring more support to stay in learning. Nevertheless, the average length of stay in Derby City (16.2 weeks) in 2007/08 was still considerably below that of the region (18.5 weeks). In some part this is due to a high regional average driven up by Nottingham City/Nottinghamshire where the programme provides learning at Level one for E2E learners.

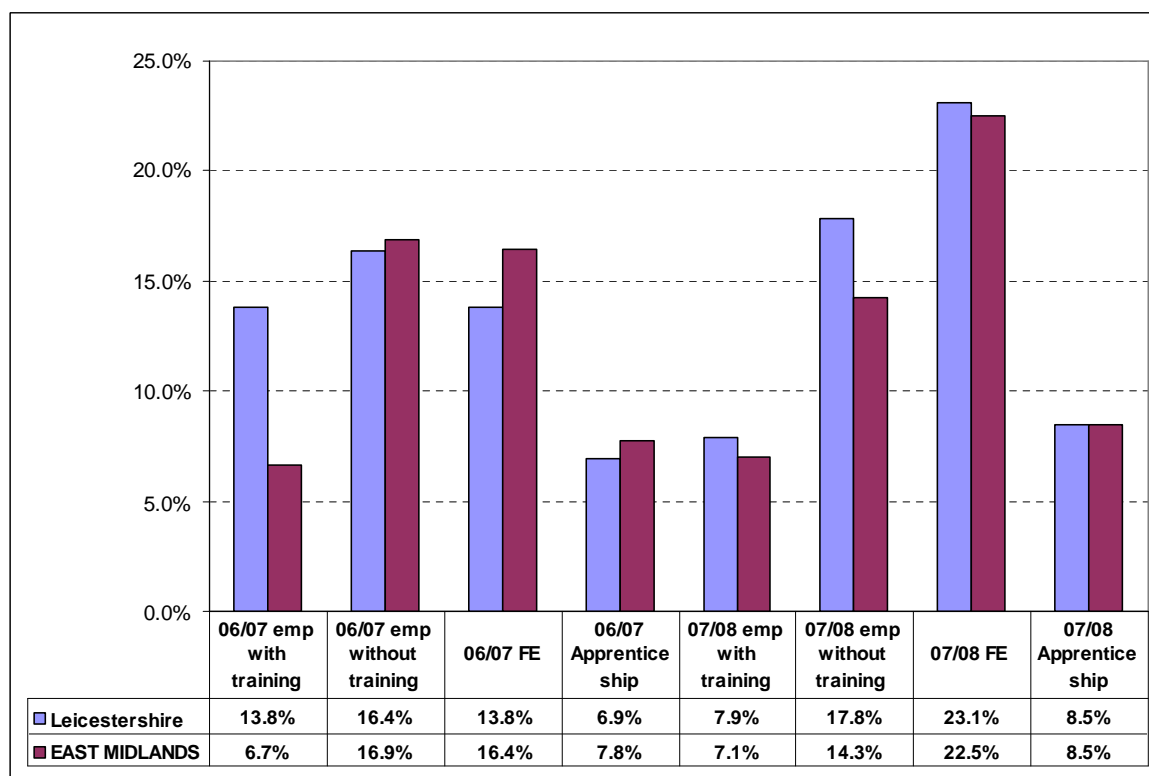
Table 15: E2E trends in Positive Outcomes: Overall Positive Outcomes, FE and Apprenticeships (App) 2006/07 – 2007/08: learners living in local authority areas

2006/07 - 2007/08 Summary	Positive outcomes									
	2006/07					2007/08				
	OVERALL	emp WITH training	emp WITHOUT training	FE	APP.	OVERALL	emp WITH training	emp WITHOUT training	FE	APP.
Derby City	229	21	69	101	38	219	20	50	122	27
Derbyshire	358	39	113	139	67	395	40	108	181	66
Leicester City	162	14	54	49	45	218	16	51	84	67
LEICESTERSHIRE	162	44	52	44	22	196	27	61	79	29
Lincolnshire	309	77	115	82	35	311	35	120	129	27
Northamptonshire	304	30	137	99	38	350	91	84	126	49
Nottingham City	104	15	29	51	9	124	23	26	58	17
Nottinghamshire	305	32	110	101	62	301	32	76	131	62
Rutland	9	0	7	2	0	1	1	0	0	0
EAST MIDLANDS	1942	272	686	668	316	2115	285	576	910	344

Source: ILR - WBL and E2E drill downs 2006/07 – 2007/08

- 37 A positive outcome from an E2E programme in LSC terms is a learner who progresses to either FE, an Apprenticeship or other employment with training. In LSC terms employment **without** training is not a positive outcome, but for ease of reading the employment without training figures have been included in Table 15 above.
- 38 The number of overall positive outcomes from E2E learning amongst Leicestershire's residents increased by 21% between 2006/07 and 2007/08. The proportion of Young People progressing into Apprenticeships increased from 14% to 15% over this period, whilst those going into FE rose by 13 percentage points. The proportion of young people leaving the programme to go to a job without training fell by 1 percentage points over this period. This compares favourably with the region where the proportion of young people going into Apprenticeships remained static, those going into FE rose by 9 percentage points and those leaving the programme to go to a job without training fell by 8 percentage points over this period.

Figure 3: Leicestershire Learners - E2E trends in Positive Outcomes: Overall Positive Outcomes, FE and Apprenticeships (App) 2006/07 – 2007/08



Source: ILR - WBL and E2E drill downs 2006/07 – 2007/08

2008/09 – Latest position to January 2009

- 39 The table below presents the latest position (to January 2009) on E2E starts by learners living in local authority areas in the region.

Table 16: 2008/09 latest E2E Learner Starts – Learners Living in the East Midlands (includes provision contracted outside of the region)

Local Authority Area	2008/09 16-18 E2E Starts - latest to January 2009
Derby City	225
Derbyshire	590
Leicester City	124
Leicestershire	127
Lincolnshire	370
Northamptonshire	341
Nottingham City	202
Nottinghamshire	326
Rutland	4
East Midlands total	2309

Source: ILR - DASH 0809-0809 - E02 - Learner.xls

- 40 More detailed information on the latest picture will be available in the second phase of these packs.

September Guarantee

Table 17: September Guarantee status for Year 11 students, 2008/09

	Y11 Guarantee			
	Offer made	Not ready for learning	No offer made	Not recorded
England	94.2%	2.9%	2.7%	0.2%
East Midlands	93.4%	5.1%	1.5%	0.0%
Derby City	93.0%	5.1%	1.9%	0.0%
Derbyshire	89.8%	8.4%	1.8%	0.0%
Leicester City	95.3%	3.4%	1.3%	0.0%
Leicestershire	95.3%	3.8%	0.8%	0.0%
Lincolnshire	94.5%	4.0%	1.5%	0.0%
Northamptonshire	92.5%	5.6%	1.9%	0.0%
Nottingham City	93.7%	4.1%	2.2%	0.0%
Nottinghamshire	93.9%	5.2%	0.9%	0.0%
Rutland	95.9%	2.5%	1.7%	0.0%

Source: Connexions via Department of Children Schools and Families NCCIS data system

Table 18: September Guarantee status for 17 year olds, 2008/09

	17 year old Guarantee			
	Offer made	Not ready for learning	No offer made	Not recorded
England	79.7%	9.6%	7.2%	3.4%
East Midlands	78.6%	16.8%	4.6%	0.0%
Derby City	78.2%	20.3%	1.5%	0.0%
Derbyshire	67.5%	30.7%	1.8%	0.0%
Leicester City	87.1%	8.7%	4.2%	0.0%
Leicestershire	88.7%	9.4%	1.9%	0.0%
Lincolnshire	73.7%	20.7%	5.6%	0.0%
Northamptonshire	65.8%	27.8%	6.4%	0.0%
Nottingham City	80.0%	13.2%	6.9%	0.0%
Nottinghamshire	78.2%	17.7%	4.1%	0.0%
Rutland	83.3%	16.7%	0.0%	0.0%

Source: Connexions via Department of Children Schools and Families NCCIS data system

- 41 In September 2008 Leicestershire achieved offer levels of 95.3% and 88.7% for Year 11 and Year 12 respectively. For the Year 11 guarantee this is 1.9 percentage points (pp) and 1.2 pp above regional and national levels and joint 2nd out of 9 LA's within East Midlands. For the Year 12 guarantee this is 10.0 pp and 0.9 pp above regional and national levels and is 1st out of 9 LA's within East Midlands.
- 42 For Year 11, of those without an offer, 321 persons were recorded as 'Not ready for formal learning at this time' of which 229 were 'Going into employment without training to NVQ Level 2'. 67 were recorded as 'No offer Made', with 66 due to being 'unable to contact'.

Travel to learn patterns

Further Education

- 43 83% of Leicestershire resident 16-18 FE learners were learning at an FE institution within the East Midlands – 50 per cent within Leicestershire institutions. Over 1200 residents access FE provision contracted outside of the East Midlands region. This is usually due to proximity of institutions to the learner's place of residence, or proximity to parental work.
- 44 In Table 19 below, the small numbers in distant regions – coded in yellow - are accessing provision from an institution whose home region is as indicated. Usually the institution makes local provision available. Learners do not travel to far flung parts of the country.

Table 19: 16-18 FE learners by LA of residence and region of FE institution, 2007/08

LA of learner residence	Region of FE institution									Total resident 16-18 learners
	East of England	East Midlands	Greater London	North East	North West	South East	South West	West Midlands	Yorkshire & Humberside	
Derby	4	3,305	3		5	3	4	246	5	3,575
Derbyshire	17	7,921	9	2	879	6	6	617	251	9,708
Leicester	6	6,784	8		10	3	1	32	6	6,850
Leicestershire	13	5,868	7		252	6	15	930	7	7,098
Lincolnshire	461	6,527	78	2	13	20	10	20	1,269	8,400
Northamptonshire	252	7,514	19		68	312	11	235	13	8,424
Nottingham	4	5,052	6		1	2		7	10	5,082
Nottinghamshire	30	9,370	16	2	12	8	13	41	210	9,702
Rutland	10	536			2	3	5	3	3	562
Unknown	7	201	1		8	1		6	13	237

Source: 2007/08 ILR F05 returns (FE 0506-0708 Learner Drill down)

- 45 The majority of Leicestershire resident 16-18 FE learners who learn outside of the East Midlands, go to the West Midlands to access their learning. Over 720 learners go to North Warwickshire and Hinckley College, 63 go to Burton College, 45 go to Warwickshire College in Royal Leamington Spa and 42 to King Edward VI College in Stourbridge.
- 46 A high number of Leicestershire resident learners access their learning through the City College, Manchester in the North West region. This is due to the fact that this provider delivers provision within the East Midlands.

Table 20: Leicestershire and Leicester resident learners learning with East Midlands FE providers 2007/08

LA of provider	Provider name	Leicester		Leicestershire	
		Learner numbers	%	Learner numbers	%
Derby City	Derby College	26	0.4	60	0.8
Derbyshire	Chesterfield College	3	0.04	-	-
	Derbyshire County Council	1	0.01	-	-
	South East Derbyshire College	1	0.01	-	-
	University of Derby, High Peak College	1	0.01	-	-
Leicester City	Gateway Sixth Form College	1,006	14.7	100	1.4
	Leicester City Council	79	1.2	15	0.2
	Leicester College	2,420	35.3	1,384	17.5
	Regent College	868	12.7	54	0.8
	Wyggeston and Queen Elizabeth I College	1,580	23.1	291	4.1
Leicestershire	Brooksby Melton College	103	1.5	562	7.9
	Leicestershire County Council	3	0.04	110	1.5
	Loughborough College	297	4.3	1,171	16.5
	South Leicestershire College	285	4.2	531	7.5
	Stephenson College	72	1.1	1,205	17
Lincolnshire	Grantham College	1	0.01	79	1.1
	Lincoln College	11	0.2	-	-
	Stamford College	17	0.2	-	-
Northamptonshire	Northampton College	14	0.2	-	-
	Tresham Institute	29	0.4	138	1.9
	Moulton College F.E.C	3	0.04	40	0.6
Nottingham City	New College, Nottingham	4	0.06	33	0.5
	South Nottingham College	15	0.2	-	-
	Castle College, Nottingham	3	0.04	26	0.4
	Bilborough College	3	0.04	-	-
Nottinghamshire	North Nottinghamshire College			-	-
	West Nottinghamshire College	3	0.04	4	0.1
Rutland	Rutland County Council	1	0.01	-	-
East Midlands total		6,784	99.	5,868	82.7

Source: 2007/08 ILR F05 returns (FE 0506-0708 Learner Drill down)

- 47 Over 1800 Leicestershire resident learners access their learning provision in Leicester City, nearly 1400 of these at Leicester College. This is 17.5% of Leicestershire resident learners, the highest proportion of Leicestershire 16-18 FE learners at any provider. There are other small out flows of learners to other Local Authority areas in the region. The largest is 178 learners from Leicestershire who travel to institutions in Northamptonshire. Around 100 learners travel to Nottingham City, and 60 to Derby College.

School Sixth Forms

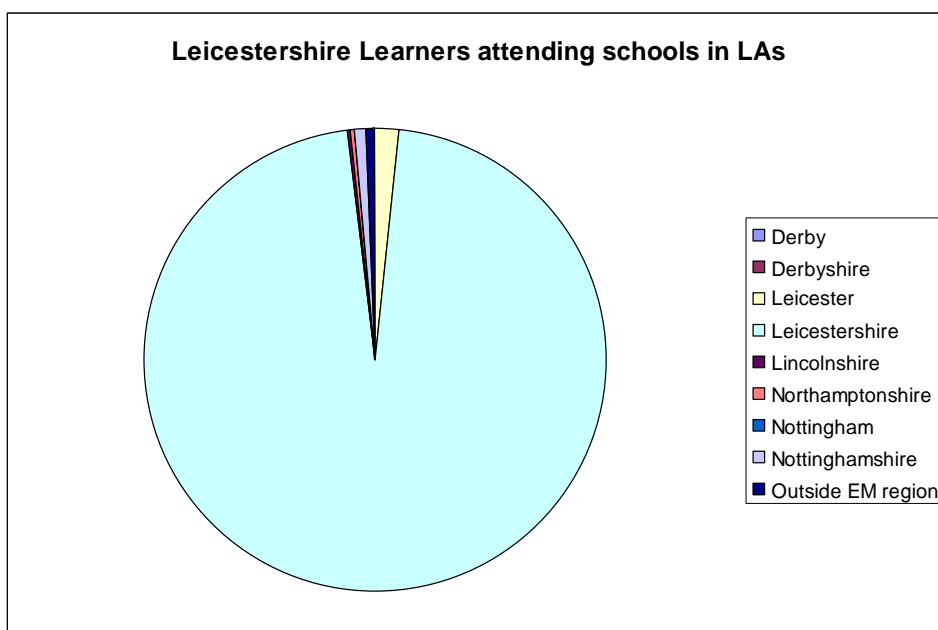
Table 21: Schools Sixth Form Learners travel to learn patterns, 2008/09

	Leicestershire LA		Leicester City LA	
	Number	%	Number	%
Number of learners resident in LA	7384	100.0	1141	100.0
Number of learners travelling to learn in:				
Derby	4	0.1	0	0.0
Derbyshire	6	0.1	0	0.0
Leicester	115	1.6	578	50.7
Leicestershire	7122	96.5	563	49.3
Lincolnshire	18	0.2	0	0.0
Northamptonshire	17	0.2	0	0.0
Nottingham	0	0.0	0	0.0
Nottinghamshire	61	0.8	0	0.0
Outside EM region	41	0.6	0	0.0

Source: Schools Sixth Form Census 2008/09

- 48 The majority of Schools Sixth Form learners living in Leicestershire LA attended a Schools Sixth Form in their locality (96.5%). There were smaller outflows to Schools Sixth Forms in Leicester City (115 learners, 1.6%), Nottinghamshire (61 learners, 0.8%) and to outside of the region (41 learners, 0.6%)

Figure 4: Schools Sixth Form Learners travel to learn patterns, 2008/09



Source: Schools Sixth Form Census 2008/09

Achievement

FE Achievements

Table 22: Aims achieved by 16-18 learners resident in East Midlands local authorities by level, 2006/07-2007/08

	2006					2007				
	Full Level 2 aims	% of aims at Full Level 2	Full Level 3 aims	% of aims at Full Level 3	Total aims	Full Level 2 aims	% of aims at Full Level 2	Full Level 3 aims	% of aims at Full Level 3	Total aims
Leicestershire	1,014	13.6%	600	8.1%	7,445	1,282	14.6%	973	11.1%	8,804
Leicester City	379	3.4%	120	1.1%	11,263	781	5.5%	403	2.8%	14,153
Northamptonshire	1,220	12.7%	875	9.1%	9,633	1,373	12.7%	1,055	9.8%	10,781
Derbyshire	1,643	11.0%	1,205	8.1%	14,956	1,653	10.6%	1,350	8.7%	15,566
Derby City	465	8.2%	322	5.7%	5,659	516	8.8%	330	5.7%	5,838
Lincolnshire	1,428	11.6%	960	7.8%	12,327	1,510	11.1%	1,177	8.7%	13,583
Rutland	48	4.8%	45	4.5%	1,006	66	5.1%	66	5.1%	1,303
Nottinghamshire	1,377	9.6%	993	6.9%	14,363	1,661	10.1%	1,190	7.2%	16,484
Nottingham City	602	7.3%	310	3.8%	8,260	634	7.0%	429	4.8%	9,014
East Midlands	8176	9.6%	5,430	6.4%	84,912	9,476	9.9%	6,973	7.3%	95,526

Source: 2007/08 ILR F05 returns (FE 0506-0708 Success rates Drill down)

49 Table 22 shows the proportions of curriculum study at different levels taken by Leicestershire residents. The count is by learning aim. An individual may be studying a range of learning aims at more than one level. So these figures do not equate to learners, but to enrolments at a particular level on a particular course. The count also only relates to those achieving at **Full Level 2 or 3**. There will be a large number of enrolments on courses that are at Level 2 and 3 but where the total learning aims studied do not amount to a **Full Level 2 or 3**. This explains the relatively low proportions of achievements.

Apprenticeship completions

50 The table below shows the number of full Apprenticeship Frameworks achieved by Leicestershire learner residents. In LSC terms, an Apprenticeship is only achieved if the learner leaves with the full framework completed, including all the key skills and technical certificates in that particular framework. Several apprentices achieve only an NVQ, because their employer often does not see the benefit in the learner taking the other elements of the programme. Those learners are not included in the table below.

Table 23: 16-18 Apprenticeship Framework Completions by Achievement and Programme Level, 2006/07 – 2007/08

Year	Programme Level	Leicestershire	East Midlands
2006/07	Apprenticeship	593	4,777
	Advanced Apprenticeship	203	1,520
	Total	796	6,297
2007/08	Apprenticeship	590	4,443
	Advanced Apprenticeship	210	1,483
	Total	800	5,926
2006/07 - 2007/08 % change	Apprenticeship	-0.5	-7.0
	Advanced Apprenticeship	3.4	-2.4
	Total	0.5	-5.9

Source: ILR - WBL AND E2E DRILL DOWNS 2006/07 and 2007/08 (July 2007 and July 2008)
Completions data

51 There has been a marginal increase in the number of Apprenticeship Frameworks completed and achieved by Leicestershire resident learners in 2007/08 compared to 2006/07 (0.5%). Advanced Apprenticeships have increased slightly. This is in contrast to the regional picture which has seen an overall decrease in successful Framework Completions (-5.9%)

School Sixth Forms

52 Table 24 below indicates, there has been a considerable rise in the average point score of those learners achieving A-Level grades in Leicestershire between 2002 and 2006. However, the increase is below the increase shown in the region (30) and nationally (35). Leicestershire showed the third highest point score for candidates in 2002, and in 2006 this had dropped a place below Lincolnshire, Nottingham City and Derbyshire.

Table 24: Average A-Level point score for candidates and entry by East Midlands local authority

	Per candidate			Per Entry		
	2002	2006	Difference	2002	2006	Difference
Derby LA	237	256.1(r)	19.1	73	77.2(r)	4.2
Derbyshire LA	265.2	281.8(r)	16.6	75.3	76.9(r)	1.6
Leicester LA	211.7	243.4(r)	31.7	67.9	72.8(r)	4.9
Leicestershire LA	247.8	277.4(r)	29.6	72.9	74.1(r)	1.2
Lincolnshire LA	275.3	304.6(r)	29.3	76.6	79.1(r)	2.5
Northamptonshire LA	236.4	268.2(r)	31.8	71.8	75.6(r)	3.8
Nottingham LA	222.6	296.2(r)	73.6	70.9	77.1(r)	6.2
Nottinghamshire LA	234.4	260.3(r)	25.9	69.4	71.4(r)	2
Rutland LA(r)(r)	..
East Midlands	245.5	275.8(r)	30.3	72.6	75.4(r)	2.8
England	254.7	289.5(r)	34.8	76	80.2(r)	4.2

Source: DCSF, (http://www.dcsf.gov.uk/inyourarea/statics/gor_E_12.shtml)

Part 2 - Progress to PSA targets at 19

53 The position of learners at age 19 in terms of the PSA target in any local authority is strongly influenced by the achievements in that local authority's schools at 16. These figures are shown in Table 25 below.

Table 25: GCSE achievements by 15 year old pupils in the East Midlands, 2007/08

	Number of 15 year old pupils			% achieving 5 A*-C grade GCSEs			% achieving 5 A*-C grades, incl. English and Maths		
	Boys	Girls	Total	Boys	Girls	Total	Boys	Girls	Total
East Midlands	27,381	26,160	53,541	58.4	67.2	62.7	43.2	50.5	46.8
Derby	1,540	1,519	3,059	63.2	63.9	63.6	46.8	51.9	49.3
Derbyshire	4,747	4,614	9,361	57.7	68.1	62.8	44.0	52.4	48.2
Leicester	1,835	1,639	3,474	52.2	58.9	55.3	37.1	42.7	39.7
Leicestershire	3,996	3,707	7,703	59.2	69.8	64.3	48.3	55.3	51.7
Lincolnshire	4,297	4,213	8,510	67.1	74.0	70.5	48.9	55.6	52.2
Northamptonshire	4,321	4,088	8,409	55.0	63.7	59.2	41.1	49.4	45.1
Nottingham	1,444	1,436	2,880	54.5	61.9	58.2	31.6	37.0	34.3
Nottinghamshire	4,963	4,717	9,680	55.5	66.5	60.9	38.9	47.4	43.0
Rutland	238	227	465	69.7	71.8	70.8	58.8	58.6	58.7
England	334,579	319,229	653,808	60.4	69.4	64.8	42.9	51.9	47.3

Source: DCSF, (<http://www.dcsf.gov.uk/rsgateway/DB/SFR/s000826/index.shtml>, Table 18a)

54 The proportion of young people in the East Midlands achieving 5 GCSEs A*-C (the equivalent of a Level 2) remains below the national average. Results vary across the region, with Leicester and Nottingham showing lower levels of achievement.

55 Achievement by boys remains considerably lower than girls in most areas.

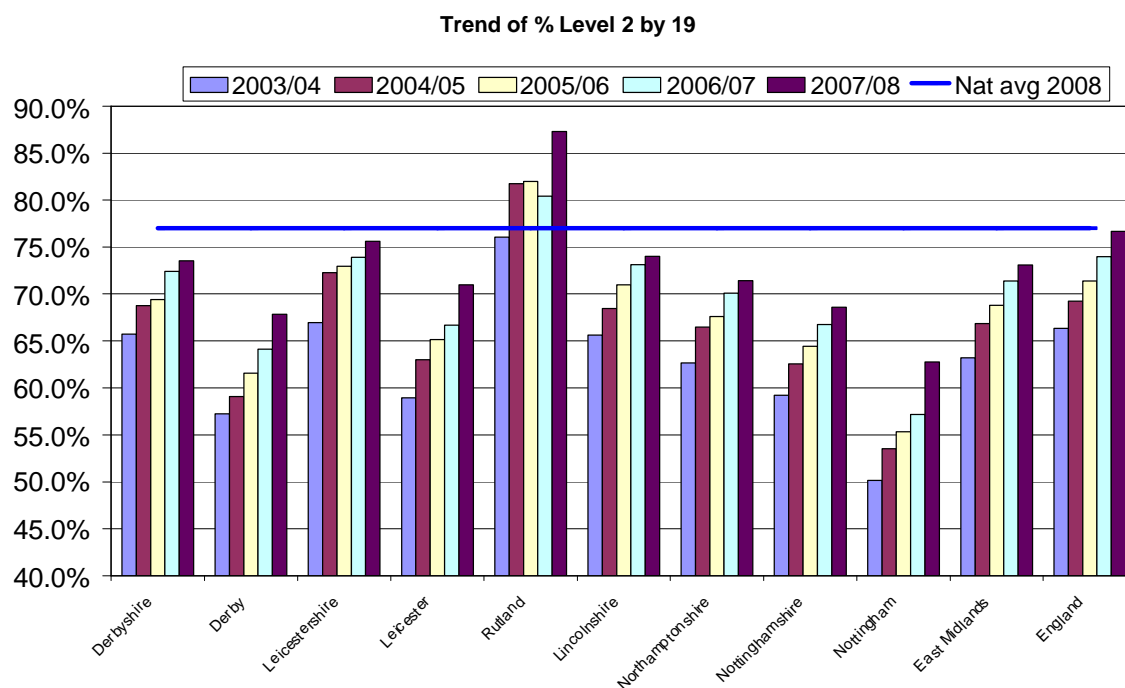
Table 26: Progress towards PSA target NI 79 – achievement of Level 2 by age 19

	Aged 19 at the end of 2003/04	Aged 19 at the end of 2004/05	Aged 19 at the end of 2005/06	Aged 19 at the end of 2006/07	Aged 19 at the end of 2007/08	Aged 19 at the end of 2008/09	Aged 19 at the end of 2009/10
LEA Name	by age 19	by age 19	by age 19	by age 19	by age 19	by age 18	by age 17
Derbyshire	65.7%	68.8%	69.4%	72.4%	73.6%	71.7%	65.0%
Derby	57.3%	59.1%	61.6%	64.1%	67.8%	65.9%	60.3%
Leicestershire	67.0%	72.3%	73.0%	73.9%	75.6%	74.4%	68.4%
Leicester	58.9%	63.0%	65.2%	66.7%	71.0%	67.6%	63.1%
Rutland	76.0%	81.8%	82.0%	80.4%	87.3%	83.4%	81.3%
Lincolnshire	65.6%	68.4%	71.0%	73.1%	74.0%	73.8%	68.5%
Northamptonshire	62.7%	66.5%	67.6%	70.1%	71.4%	70.8%	62.9%
Nottinghamshire	59.2%	62.5%	64.4%	66.8%	68.6%	66.4%	60.2%
Nottingham	50.2%	53.5%	55.3%	57.2%	62.8%	59.9%	55.0%
East Midlands	63.2%	66.9%	68.8%	71.4%	73.1%	70.7%	64.3%
England	66.3%	69.2%	71.4%	74.0%	76.7%	74.8%	67.9%

Source: DCSF Website: Level2andlevel3attainmentin each LEAApr2009.xls

56 There has been a considerable rise in the proportion of young people who gain a Full Level 2 by 19 over the last five years in Leicestershire. The proportion has risen by nearly 9 percentage points. This is below both the regional level of increase (10 percentage points) and the national change. However, Leicestershire remains one of the strongest performing areas in the region.

Figure 5: Percentage of young people with a Level 2 by age 19 in the East Midlands



Source: DCSF Website: *Level2andlevel3attainmentin each LEAApr2009.xls*

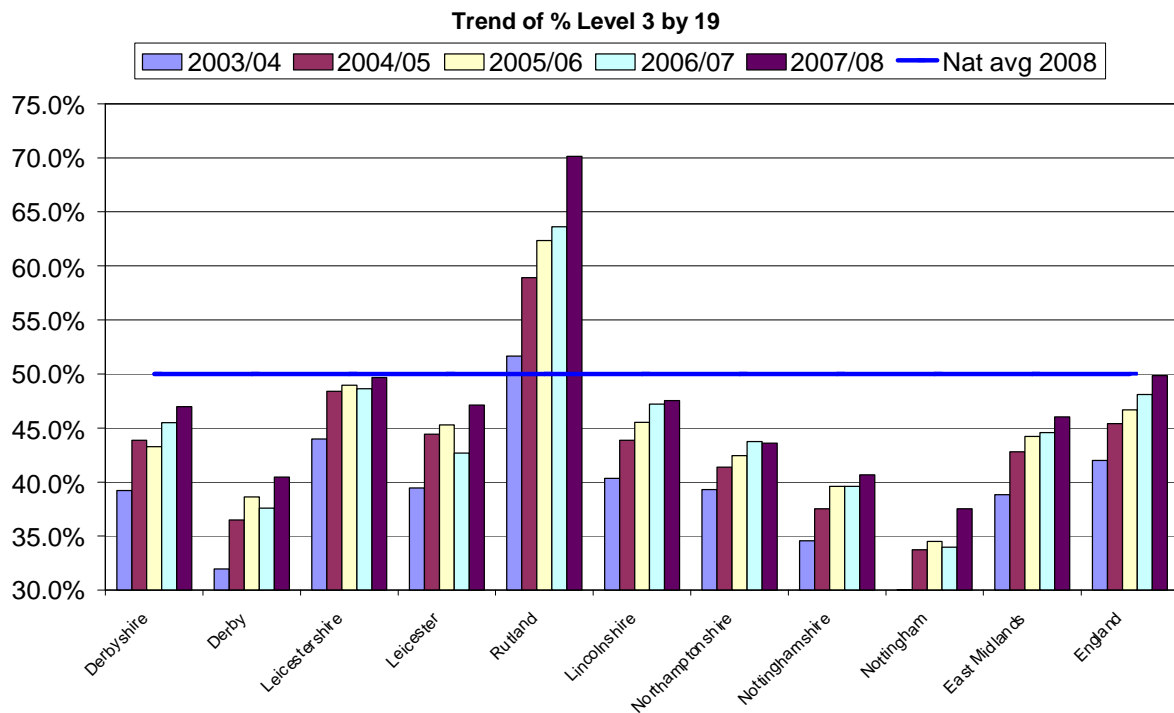
Table 27: Progress towards PSA target NI 80 – achievement of Level 3 by age 19

	19 in 2003/04	29 in 2004/05	19 in 2005/06	19 in 2006/07	19 in 2007/08	Aged 19 in 2008/09	Aged 19 in 2009/10
Region	by age 19	by age 19	by age 19	by age 19	by age 19	by age 18	by age 17
Derbyshire	39.2%	43.9%	43.3%	45.5%	47.0%	41.7%	16.8%
Derby	31.9%	36.5%	38.6%	37.6%	40.5%	35.2%	7.5%
Leicestershire	44.0%	48.4%	49.0%	48.6%	49.7%	45.7%	24.0%
Leicester	39.5%	44.4%	45.3%	42.7%	47.1%	37.9%	18.5%
Rutland	51.7%	58.9%	62.4%	63.6%	70.1%	61.2%	13.1%
Lincolnshire	40.3%	43.9%	45.5%	47.2%	47.6%	42.7%	15.8%
Northamptonshire	39.3%	41.4%	42.4%	43.8%	43.6%	40.3%	14.5%
Nottinghamshire	34.6%	37.5%	39.6%	39.6%	40.7%	35.6%	16.1%
Nottingham	30.0%	33.7%	34.5%	34.0%	37.5%	32.7%	12.1%
East Midlands	38.8%	42.8%	44.2%	44.6%	46.0%	40.6%	16.3%
England	42.0%	45.4%	46.7%	48.1%	49.8%	43.4%	16.9%

Source: DCSF Website: *Level2andlevel3attainmentin each LEAApr2009.xls*

57 There is a similar picture with the achievement of a Full Level 3 by 19. There has been an increase of 5.7 percentage points in the proportion of young people who gain a Full Level 3 by 19 over the last five years in the county. This is below both the regional rate of improvement at regional level (7.2 percentage points) and the national rate (8.2 percentage points). However, as Figure 6 below shows, Leicestershire has amongst the highest levels of achievement for this target in the region, and is only one of two areas to meet or exceed the national average.

Figure 6: Percentage of young people with a Level 3 by age 19 in the East Midlands



Source: DCSF Website: *Level2andlevel3attainmentin each LEApr2009.xls*

Part 3 - Provision within Leicestershire

58 This section is intended to show how post-16 providers (excluding those for Apprenticeships) are delivering against their contracts and the quality of their delivery. It is important information for planning the number of commissioned places in 2010/2011 since learning places will need to be planned for all those who choose to learn within Leicestershire's institutions.

Further Education providers

FE participation

59 In 2008/09, 9% of the region's 16-18 Further Education learners study within Leicestershire. Of these, Loughborough College is responsible for 35% of the provision in FE in the county, with Stephenson College responsible for 25% and Brooksby Melton College responsible for 22%.

Table 28: Number of 16-18 FE learners by level for each provider in Leicestershire LSC, 2006/07-2008/09

Provider Name	2006/07					2007/08				
	Full Level 2	%	Full Level 3	%	Total Learners	Full Level 2	%	Full Level 3	%	Total Learners
Brooksby Melton College	230	27.4	349	41.5	840	258	29.6	320	36.7	873
Loughborough College	407	24.1	585	34.6	1,690	378	22.3	669	39.4	1,697
South Leicestershire College	173	24.3	199	27.9	712	256	29.6	196	22.6	866
Stephenson College	410	38.8	292	27.6	1,058	448	31.5	355	24.9	1,424
Leicestershire LA Total	1,220	28.4	1,425	33.1	4,300	1,340	27.6	1,540	31.7	4,860
East Midlands Total	12,662	23.7	18,559	34.7	53,446	12,724	22.6	20,188	35.9	56,249

Provider Name	2008/09				Total Learners
	Full Level 2	%	Full Level 3	%	
Brooksby Melton College	287	27.1	392	37.0	1,060
Loughborough College	341	20.6	772	46.7	1,653
South Leicestershire College	260	31.5	204	24.7	825
Stephenson College	508	42.8	369	31.1	1,188
Leicestershire LA Total	1,396	29.5	1,737	36.8	4,726
East Midlands Total	12,951	23.1	21,755	38.9	55,980

Sources: FE Learners Full Level 2 and Full Level 3 Drill Down 2005-06 - 2007/08 and 08/09 data - Dashboard 0809-0809 - LR FE - Learner.xls

NB: Total Learners also includes learners who are not undertaking L2/L3 qualifications

60 Across the different Providers, the proportional split between the level of qualifications that Learners are undertaking varies both between Providers

and from year to year from 2006/07 – 2008/09. However, compared to 2006/07, there has been an increase in the proportion of learners undertaking Full Level 3s in 2008/09. However, the 2008/09 figures are not final end of year totals and so must be viewed with some caution.

Table 29: Number of 16-18 FE learners by provider in Leicestershire with a learning difficulty and/or disability (LLDD), 2007/08

LA	Provider	LLDD	
		No.	% of LLDD with each Provider
Leicestershire	Learner numbers		
	Brooksby Melton College	165	18.9
	Leicestershire County Council	12	10.2
	Loughborough College	350	20.6
	South Leicestershire College	335	38.7
	Stephenson College	221	15.5
Leicestershire total – Overall Providers		1083	21.8

Source: 2007/08 ILR F05 returns (FE 0506-0708 Learner Drill down)

- 61 South Leicestershire College had a higher proportion of learners with learning difficulties and/or disabilities in 2007/08 compared to other FE providers in Leicestershire local authority area funded by Leicestershire LSC.
- 62 Table 29 only shows the numbers of learners with a learning difficulty and/or disability in mainstream FE providers. There are a number of learners who access provision at specialist colleges and these providers are based around the region. These learners and providers will be covered in the LLDD report that will be undertaken in Series Two and Three of this reporting process.

Table 30: Numbers of East Midlands 16-18 FE learners by their district of residence by provider in Leicestershire, 2007/08

	Derby City	Derbyshire	Leicester City	Leicestershire	Lincolnshire	Northamptonshire	Nottingham City	Nottinghamshire	Rutland	blank	Total East Midlands learners	Learners from outside of East Midlands	Full Total of learners
Brooksby Melton College		1	103	562	66	2	4	14	40	4	796	77	873
Leicestershire County Council		1	3	110	1	1				1	117	1	118
Loughborough College	12	20	297	1,171	20	15	9	63	3	6	1,616	81	1,697
South Leicestershire College		1	285	531		9		2		3	831	35	866
Stephenson College	7	105	72	1,205		1	2	5		2	1,399	25	1,424
Leicestershire providers total	19	128	760	3579	87	28	15	84	43	16	4759	219	4978

Source: 2007/08 ILR F05 returns (FE 0506-0708 Learner Drill down)

- 63 In terms of planning places for learning and learners within Leicestershire's providers, whilst by far the greatest proportion of learners come from within the county itself (71.9% in 2007/08), the Local Authority will need to ensure there are places available for learners from Leicester City (15.3%) and Derbyshire (2.6%) and for small numbers of learners who come from other local authorities and other regions.
- 64 Brooksby Melton College draws learners from the widest geographic range, including 8.8% of its learners from outside of the East Midlands. South Leicestershire College draws a third of its learners from Leicester City. It is likely that these choices are made on the basis of curriculum availability as well as travel patterns. More detail on this issue will be provided in the curriculum update of these reports.

Table 31: Percentage of East Midlands 16-18 FE learners by their district of residence by provider in Leicestershire, 2007/08

	Derby City	Derbyshire	Leicester City	Leicestershire	Lincolnshire	Northamptonshire	Nottingham City	Nottinghamshire	Rutland	blank	Total East Midlands learners	Learners from outside of East Midlands	Full Total of learners
Brooksby Melton College	0.0%	0.1%	11.8%	64.4%	7.6%	0.2%	0.5%	1.6%	4.6%	0.5%	91.2%	8.8%	100
Leicestershire County Council	0.0%	0.8%	2.5%	93.2%	0.8%	0.8%	0.0%	0.0%	0.0%	0.8%	99.2%	0.8%	100
Loughborough College	0.7%	1.2%	17.5%	69.0%	1.2%	0.9%	0.5%	3.7%	0.2%	0.4%	95.2%	4.8%	100
South Leicestershire College	0.0%	0.1%	32.9%	61.3%	0.0%	1.0%	0.0%	0.2%	0.0%	0.3%	96.0%	4.0%	100
Stephenson College	0.5%	7.4%	5.1%	84.6%	0.0%	0.1%	0.1%	0.4%	0.0%	0.1%	98.2%	1.8%	100
Leicestershire providers total	0.4	2.6%	15.3%	71.9%	1.7%	0.6	0.3%	1.7%	0.8%	0.3%	95.6	4.4%	100

Source: 2007/08 ILR F05 returns (FE 0506-0708 Learner Drill down)

Table 32: Numbers of 16-18 FE learners by region of residence for providers in Leicestershire 2007/08

	Brookby Melton College		Leicestershire County Council		Loughborough College		South Leicestershire College		Stephenson College		Leicestershire colleges total	
	No.	%	No.	%	No.	%	No.	%	No.	%	No.	%
East of England	7	0.8			13	0.7					20	0.4
East Midlands	796	91.2	117	99.2	1616	95.2	831	96.0	1399	98.2	4759	95.6
Greater London	1	0.1			2	0.1	1	0.1	2	0.1	6	0.1
North East	12	1.4									12	0.2
North West	11	1.3			7	0.4			2	0.1	20	0.4
South East	7	0.8			9	0.5	2	0.2			18	0.4
South West	3	0.3			1	0.1					4	0.1
West Midlands	10	1.1			8	0.5			18	1.3	36	0.7
Yorkshire and Humber	21	2.4			10	0.6			2	0.1	33	0.7
Not known			1	0.8	31	1.8	32	3.7	1	0.1	65	1.3
Total learners	873	100	118	100	1697	100	866	100	1424	100	4978	100

Source: 2007/08 ILR F05 returns (FE 0506-0708 Learner Drill down)

FE achievements

- 65 Over the last two years, all FE providers in Leicestershire have made improvements to their overall success rates and most now stand above the regional average.
- 66 Success rates at both Full Level 2 and Full Level 3 have improved significantly, with particular increases at Full Level 3 at Loughborough College, South Leicestershire College and Stephenson College.

Table 33: Success rates of Leicestershire FE providers 2006/7

	2006/07					
	Full Level 2		Full Level 3		Total	
	Achievements	Success rate	Achievements	Success rate	Achievements	Success rate
Brooksby Melton College	146	65.8%	176	79.3%	764	73.6%
Leicestershire County Council					70	61.4%
Loughborough College	429	77.0%	175	58.1%	2,599	74.8%
South Leicestershire College	135	76.7%	85	70.8%	1,450	86.6%
Stephenson College	290	76.7%	106	67.9%	1,165	80.2%
East Midlands average	7,587	69.6%	4,905	64.3%	79,184	75.8%

Source: 2007/08 ILR F05 returns (FE 0506-0708 Success rate Drill Down)

Table 34: Success rates at Leicestershire FE providers 2007/08

	2007/08					
	Full Level 2		Full Level 3		Total	
	Achievements	Success rate	Achievements	Success rate	Achievements	Success rate
Brooksby Melton College	212	88.3%	154	81.5%	714	79.3%
Leicestershire County Council					110	82.1%
Loughborough College	378	76.5%	293	75.3%	2,748	76.7%
South Leicestershire College	192	73.6%	107	82.3%	1,233	87.4%
Stephenson College	319	78.2%	172	78.9%	1,233	84.1%
East Midlands average	9,050	74.0%	6,638	74.0%	90,116	78.9%

Source: 2007/08 ILR F05 returns (FE 0506-0708 Success rate Drill Down)

FE Funding

- 67 Funding for 16-18 learners in FE in Leicestershire has increased over the last three years in the order of 15% on average for the area's providers. Most of the county's providers have seen significant increases in their funding for the 16-18 age group.

Table 35: FE Funding 2006/07-2008/09

Provider	2006/07	% change on previous year	2007/08	% change on previous year	2008/09*
	16-18		16-18		16-18
Brooksby Melton College	£4,179,907	6.1	£4,370,280	4.6	£4,154,634
Leicestershire County Council	£46,732	-20.7	£78,002	66.9	£46,697
Loughborough College	£6,186,176	7.4	£7,071,565	14.3	£6,664,375
South Leicestershire College	£3,150,672	37.3	£3,741,224	18.7	£3,435,415
Stephenson College	£3,829,801	29.9	£4,651,289	21.4	£3,987,487
Leicestershire LA total	£17,393,288	15.9	£19,912,360	14.5	£18,288,608

Source: 2007/08 ILR F05 returns (FE 0506-0708 Learner Drill down). *LSC 2008/09 allocations information

- 68 In 2008/09, the LSC introduced its new Demand Led Funding methodology and this was applied to the allocations process for funding FE provision in that year. For this reason, direct comparisons are not possible between 2007/08 funding levels and those in 2008/09. Further information about the Demand Led Funding methodology is available via the LSC web site (<http://www.lsc.gov.uk/providers/funding-policy/demand-led-funding/>).

School Sixth Forms

School Sixth Forms participation

- 69 Most of the school sixth forms show significant increases in the size of the combined year 12-14 over the last four years, with only two schools showing a decrease. This reflects the growth in the 16-18 population across the region, and in many schools the increase in student numbers between 2007/08 and 2008/09 shows a marked slowing of this trend.

Table 36: numbers of Year 12-14 students in Leicestershire School Sixth Forms, 2005/06-2008/09

	2005/06	2006/07	2007/08	2008/09
King Edward VII Science and Sport College	209	251	265	286
Burleigh Community College	436	379	424	467
The Robert Smyth School	384	428	478	482
King Edward VII School	524	546	488	487
Guthlaxton College	393	385	395	421
Longslade Community College	276	324	310	359
The Beauchamp College	940	1003	1051	1062
Bosworth Community College	349	351	354	407
Wreake Valley Community College	302	357	372	361
Countesthorpe Community College	281	295	292	330
Groby Community College	255	257	252	275
Hind Leys Community College	205	204	214	211
William Bradford Community College	162	157	157	146
John Cleveland College	460	453	437	482
Lutterworth College	680	685	715	750
Rawlins Community College	498	529	463	522
Ashby School	523	522	544	592

Source: School Sixth Form Census Data

School Sixth Forms achievements

- 70 Overall, Leicestershire's average point score per student increased between 2006 and 2007, but there was no change on the figures for 2008. This bucked the LSC area and national trend which showed good improvement. However, the area averages will include the FE providers so does not reflect purely school sixth forms performance.

Table 37: A Level point scores per candidate and per entry by provider in Leicestershire, 2008

	Average point score per student			Average point score per examination entry		
	2006	2007	2008	2006	2007	2008
Local Authority Average	703.2	731.7	731.7	196	200.1	200.5
LSC Average	678.9	710.9	716.8	195.7	200.4	200.2
England Average	721.5	731.2	740	206.2	207.5	209.4
Ashby School	792.7	831.9	882.6	199.6	201.8	208.5
The Beauchamp College	806.7	798	788.8	203.1	201.2	202.6
Bosworth Community College	675	729.6	721.2	186.9	197.5	194.1
Burleigh Community College	703.9	708.4	735.2	192.7	197.2	188.3
Countesthorpe Community College	642.3	692.9	687.3	197.1	201.2	202.5
De Lisle Catholic Science College	904.3	919.1	913.9	214.8	216.7	215.4
Groby Community College	712.7	697.9	686.2	202.2	208.3	206.4
Guthlaxton College	821.2	780.5	746.9	204.4	197.8	196.9
Hind Leys Community College	724.2	830.4	770.9	178.1	194.6	187.7
John Cleveland College	813	831.7	804.7	199.6	202.5	201.2
King Edward VII School	659.8	651	678.3	198.2	197.2	205
King Edward VII Science and Sport College	644.2	631.5	647.6	200.6	192.1	195.6
Longslade Community College	704.3	658.7	787.5	187.6	184.6	188.4
Lutterworth College	739	801.9	786.4	195.2	197.6	198.7
Rawlins Community College	764.6	792.5	800.6	181.7	191.8	189.1
The Robert Smyth School	753	795.2	759.8	196.7	205.7	197.6
William Bradford Community College	679.6	777.3	753	182.3	185.7	177.5
Wreake Valley Community College	657.3	698.9	722.5	181.1	190.8	191.1

Source: DCSF, (<http://www.dcsf.gov.uk/performance/tables/>)

School Sixth Form funding

71 Only 2008/09 funding information is available at this time. More detail, including 2009/10 funding allocations figures will be available in the next phase of the reports.

Table 38: 2008/09 School Sixth Form funding in Leicestershire

School Sixth Form	2008/09 Total funding allocation
King Edward VII Science and Technology College	£1,253,634
Burleigh Community College	£2,365,537
The Robert Smyth School	£2,478,735
King Edward VII School	£2,058,768
Guthlaxton College	£1,952,753
Longslade Community College	£1,795,287
The Beauchamp College	£5,248,631
Bosworth Community College	£1,605,561
Wreake Valley Community College	£1,938,747
Countesthorpe Community College	£1,481,434
Groby Community College	£1,231,376
Hind Leys Community College	£1,036,150
William Bradford Community College	£843,947
John Cleveland College	£2,247,822
Lutterworth College	£3,546,832
Rawlins Community College	£2,455,926
Ashby School	£2,825,953
De Lisle Science College	£956,296
New College Leicester	£380,877
Leicestershire Total	£37,704,267

Source: 2008/09 LSC School Sixth Form funding allocations

Apprenticeships

Apprenticeship participation

72 This section provides information on the number of learners participating on Apprenticeships within the Leicestershire LSC area (including the City) and the providers funded to deliver that learning. The data presents detailed information about those providers that are funded by Leicestershire LSC. However, some of these providers may not *deliver* the learning in the Leicestershire area and due to the complexities in how this data is constructed it is not possible at this stage to provide a breakdown of the delivery location of each Provider for individual learners.

Table 39: Number of 16-18 learners undertaking Apprenticeships with Providers funded by Leicestershire LSC, 2007/08

Providers	2007/08				Total
	Apprenticeship		Advanced Apprenticeship		
	No.	%	No.	%	
Automotive Transport Training Limited	7	0.4	3	0.3	9
Barbon Limited	7	0.4	1	0.1	8
Brooksby Melton College	104	7.1	37	4.3	141
Carter & Carter Group Plc	26	1.8	0	0.0	26
Constant Browning Edmonds Limited	12	0.8	3	0.3	14
England And Wales Cricket Board Limited	0	0.0	66	7.9	66
Heart Of England Training Limited	150	10.3	20	2.3	170
In Training (ALD) Ltd	27	1.8	1	0.1	27
In Training (CBE) Ltd	3	0.2	1	0.1	4
Institute Of Swimming Limited	0	0.0	190	22.6	190
JHP Group Limited	1	0.1	0	0.0	1
Kaplan Financial Limited	4	0.3	10	1.2	14
Leicester College	228	15.6	104	12.3	331
Leicester City Council					
Leicestershire County Council	12	0.8	4	0.5	16
Leicestershire Engineering Training Group Limited	11	0.7	30	3.5	40
Loughborough College	62	4.3	80	9.5	142
Mardell Associates Limited	2	0.2	9	1.1	12
Mark Bremner	0	0.0	1	0.1	1
Newcastle College Construction Limited					
North Warwickshire And Hinckley College	70	4.8	31	3.7	101
Northampton College					
Potential (2000) Limited	0	0.0	1	0.1	1
Protocol Skills Limited	28	1.9	6	0.7	34
Rathbone Training	52	3.6	1	0.1	53
Slack & Parr Limited	0	0.0	23	2.7	23
South Leicestershire College	86	5.9	71	8.4	157
Starting Off (Kettering) Ltd.					
Stephenson College	398	27.2	80	9.5	478
TBG Learning Ltd	6	0.4	2	0.2	8
TNG Network Limited	16	1.1	10	1.2	26
Triangle Training Ltd	113	7.7	46	5.5	159
VT Training Plc	41	2.8	13	1.5	54
Grand Total	1464	100.0	840	100.0	2304

Providers	2008/09				
	Apprenticeship		Advanced Apprenticeship		Total
	No.	%	No.	%	
Automotive Transport Training Limited	6	0.4	5	0.5	11
Barbon Limited		0.0		0.0	
Brooksby Melton College	126	8.8	27	2.8	153
Carter & Carter Group Plc		0.0		0.0	
Constant Browning Edmonds Limited		0.0		0.0	
England And Wales Cricket Board Limited	0	0.0	71	7.3	71
Heart Of England Training Limited	170	11.9	32	3.3	202
In Training (ALD) Ltd		0.0		0.0	
In Training (CBE) Ltd	8	0.5	4	0.4	12
Institute Of Swimming Limited	0	0.0	258	26.6	258
JHP Group Limited	13	0.9	1	0.1	14
Kaplan Financial Limited	1	0.1	8	0.8	9
Leicester College	184	12.8	93	9.6	277
Leicester City Council	2	0.1	0	0.0	2
Leicestershire County Council	9	0.7	5	0.5	15
Leicestershire Engineering Training Group Limited		0.0		0.0	
Loughborough College	66	4.6	131	13.5	197
Mardell Associates Limited	1	0.1	9	0.9	10
Mark Bremner	3	0.2	2	0.2	6
Newcastle College Construction Limited	56	3.9	0	0.0	56
North Warwickshire And Hinckley College	58	4.0	37	3.8	95
Northampton College	1	0.1	0	0.0	1
Potential (2000) Limited		0.0		0.0	
Protocol Skills Limited	28	1.9	5	0.5	32
Rathbone Training		0.0		0.0	
Slack & Parr Limited	0	0.0	25	2.5	25
South Leicestershire College	79	5.5	100	10.3	179
Starting Off (Kettering) Ltd.	0	0.0	2	0.2	2
Stephenson College	464	32.3	92	9.5	557
TBG Learning Ltd	8	0.5	0	0.0	8
TNG Network Limited	17	1.2	4	0.4	21
Triangle Training Ltd	138	9.6	60	6.2	198
VT Training Plc		0.0		0.0	
Grand Total	1438	100.0	970	100.0	2408

NB: The data shows an average of learners undertaking an Apprenticeship in a given month over a 12 month period. Source: ILR - WBL and E2E 2007/08 Drill Downs, 'In Learning' Data ILR Employer Responsive Drill Downs 2008/09, Period 8 (March 2009)

73 Stephenson College, Leicester College, Institute Of Swimming Limited, Heart Of England Training Limited, South Leicestershire College, Loughborough College and Triangle Training LTD and Brooksby Melton College were some of the main Providers delivering Apprenticeships funded by Leicestershire LSC.

- 74 The table below provides a breakdown of Providers funded by Leicestershire LSC in 2007/08 that had learners with learning difficulties and/or disabilities undertaking Apprenticeships.

Table 40: Number of 16-18 Apprenticeship learners with a learning difficulty and/or disability (LLDD), by Providers funded by Leicestershire LSC, 2007/08

Provider	2007/08 - LLLD	
	No.	%
Automotive Transport Training Limited	0	0
Barbon Limited	2	1.6
Brooksby Melton College	8	5.9
Carter & Carter Group Plc	3	2.4
Constant Browning Edmonds Limited	6	5.0
England And Wales Cricket Board Limited	2	1.6
Heart Of England Training Limited	21	16.4
In Training (ALD) Ltd	2	1.2
In Training (CBE) Ltd	1	1.0
Institute Of Swimming Limited	30	23.7
JHP Group Limited	0	0.0
Kaplan Financial Limited	1	0.7
Leicester College	9	7.0
Leicestershire County Council	0	0.0
Leicestershire Engineering Training Group Limited	3	2.6
Loughborough College	6	5.0
Mardell Associates Limited	2	1.4
Mark Bremner	0	0.0
North Warwickshire And Hinckley College	6	4.7
Potential (2000) Limited	0	0.0
Protocol Skills Limited	3	2.1
Rathbone Training	10	7.7
Slack & Parr Limited	1	0.8
South Leicestershire College	2	1.4
Stephenson College	7	5.3
TBG Learning Ltd	0	0.0
TNG Network Limited	0	0.0
Triangle Training Ltd	1	0.8
VT Training Plc	2	1.6
Leicestershire Total	127	100

NB: The data shows an average of learners undertaking an Apprenticeship in a given month over a 12 month period. Source: ILR - WBL and E2E 2007/08 Drill Downs, 'In Learning' Data

- 75 The Institute of Swimming Limited and the Heart of England Training Limited had a higher proportion of learners with learning difficulties and/or disabilities undertaking Apprenticeships compared to other Providers funded by Leicestershire LSC.

Apprenticeship achievements

- 76 The table below presents overall 2007/08 success rates for Apprenticeship delivery by Providers funded by Leicestershire LSC.

Table: 2007/08 Apprenticeship Framework Overall Success Rates, Providers funded by Leicestershire LSC

PROVIDER	Apprenticeships		Advanced Apprenticeships		Overall	
	Frameworks	Overall Success rate	Frameworks	Overall Success rate	Frameworks	Overall Success rate
Automotive Transport Training Limited	3	38%	3	100%	6	55%
Barbon Limited	8	24%	-	-	8	24%
Brooksby Melton College	55	71%	26	100%	81	78%
Constant Browning Edmonds Limited	7	64%	2	100%	9	69%
Heart Of England Training Limited	98	74%	9	82%	107	75%
Leicester College	81	62%	35	55%	116	60%
Leicestershire County Council	2	67%	8	100%	10	91%
Leicestershire Engineering Training Group Limited	5	16%	4	24%	9	18%
Loughborough College	23	68%	4	50%	27	64%
Mardell Associates Limited	4	80%	6	100%	10	91%
North Warwickshire And Hinckley College	56	79%	5	71%	61	78%
Protocol Skills Limited	16	46%	1	33%	17	45%
Rathbone Training	32	52%	-	-	32	52%
Slack & Parr Limited	-	-	6	86%	6	86%
South Leicestershire College	61	60%	16	84%	77	64%
Stephenson College	108	67%	25	81%	133	69%
TBG Learning Ltd	7	70%	2	50%	9	64%
TNG Network Limited	5	50%	5	71%	10	59%
Triangle Training Ltd	47	77%	5	71%	52	76%
Vt Training Plc	41	68%	3	30%	44	63%
Kaplan Financial Limited	6	100%	11	79%	17	85%
England And Wales Cricket Board Limited	-	-	3	23%	3	23%
In Training (CBE) Ltd	1	100%	-	-	1	100%
Leicestershire Total	666	64%	179	67%	845	64%
East Midlands Total	3,781	64%	952	66%	4,733	65%

Source: ILR - WBL New Measures of Success Rates Drill Downs 2007/08

- 77 Leicestershire's overall success rate in 2007/08 was slightly below the regional average (64%).
- 78 Of those Providers with a higher volume of successful Framework completions, the following had good success rates which were above the local and regional average: Brooksby Melton College (78%); Heart Of England Training Limited (75%); North Warwickshire And Hinckley College (78%), Triangle Training Ltd (76%) and Stephenson College (69%).

Apprenticeship funding

Table 41: Funding for Leicestershire LSC Apprenticeship providers 2008/09

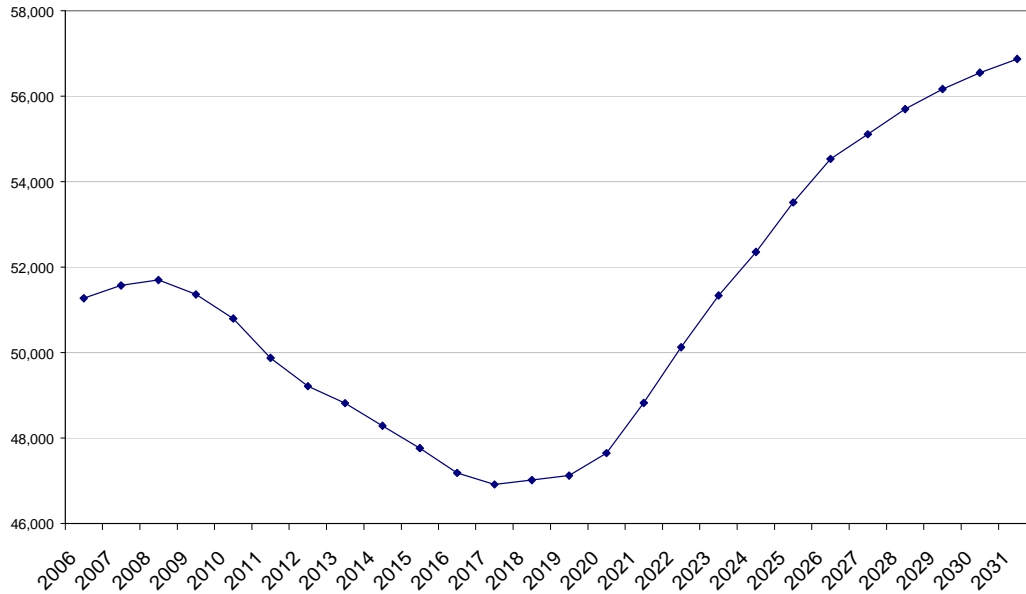
Apprenticeship training providers	Original 2008/09 contract value
Automotive Transport Training Limited	£59,160.18
Brooksby Melton College	£583,036.68
England and Wales Cricket Board Limited	£278,061.57
Heart Of England Training Limited	£502,650.81
Institute Of Swimming Limited	£620,912.77
Intraining (CBE) Ltd	£89,667.34
JHP Group Limited	£31,936.36
Kaplan Financial Limited	£73,565.09
Leicester College	£1,328,154.36
Leicestershire County Council	£70,144.61
Loughborough College	£542,067.69
Mardell Associates Limited	£51,517.38
Mark Bremner	£18,342.47
Newcastle College Construction Limited	£272,080.55
North Warwickshire And Hinckley College	£368,075.31
Protocol Skills Limited	£118,093.23
Rathbone Training	£262,400.34
Slack & Parr Limited	£158,029.59
South Leicestershire College	£724,087.01
Stephenson College	£2,623,087.48
TBG Learning Ltd	£45,163.98
TNG Limited	£119,418.50
Triangle Training Ltd	£681,828.19
VT Training Plc	£228,221.59
Leicestershire LSC area total	£9,849,703.08

Source: AMPS – Employer Responsive, 2008/09 Original Contract Value. NB: Final year funding may differ from the totals above depending on performance against the contract.

Part 4 - Area Context

14-19 Population information

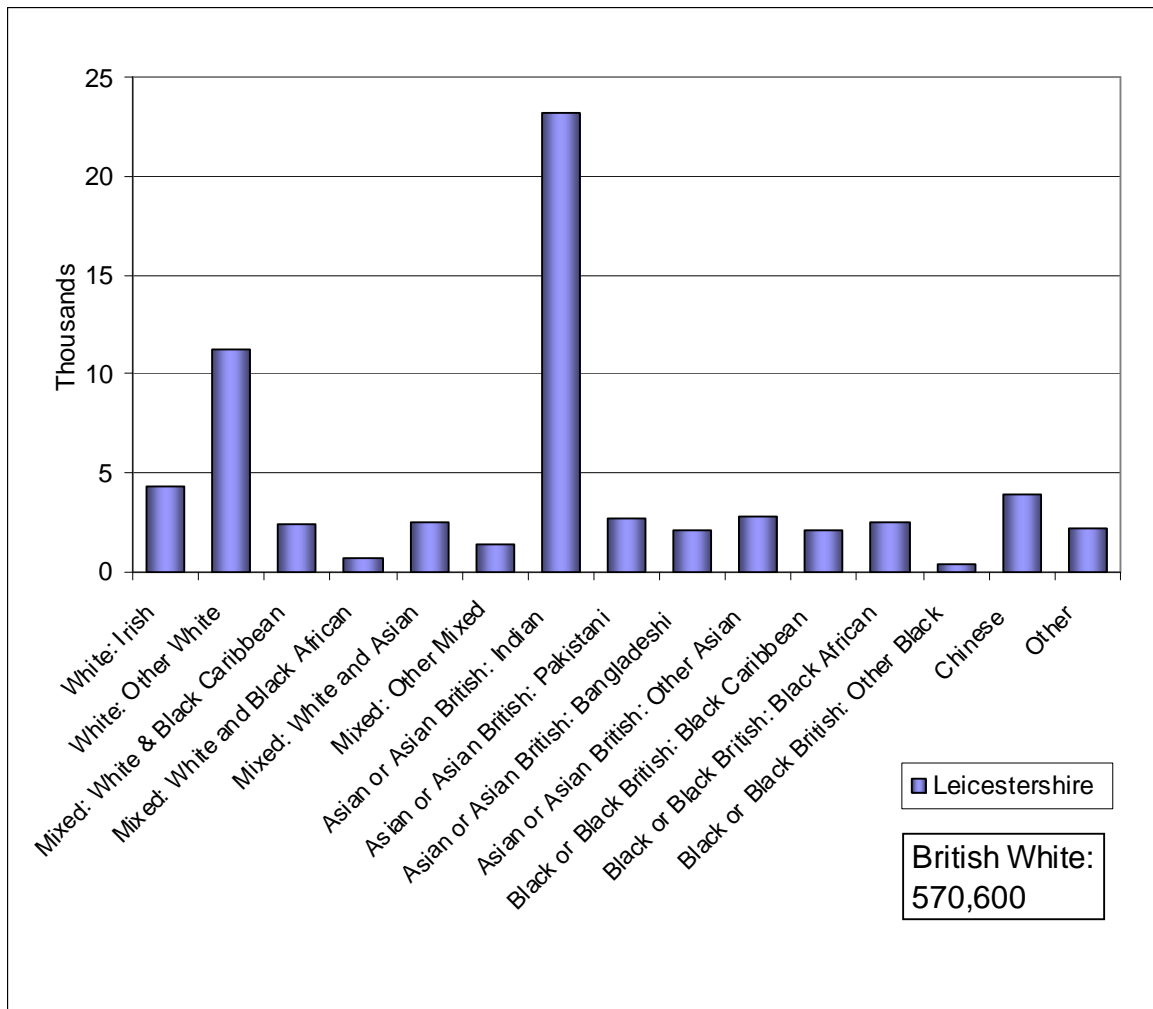
Figure 7:14-19 population projections for Leicestershire, 2006-2030



Source: ONS 2006-based population projections

- 79 From peak levels of 14-19 population in 2008, Leicestershire will see a steady decline until 2017-18. The 2017-18 level will be around 9% lower. After 2018 the population will start to increase, returning to 2008 levels by 2023 and continuing to rise through till 2031 where they are forecast to be 10% above the 2008 level.

Figure 8: Estimate of resident population by ethnic group (all ages), 2006

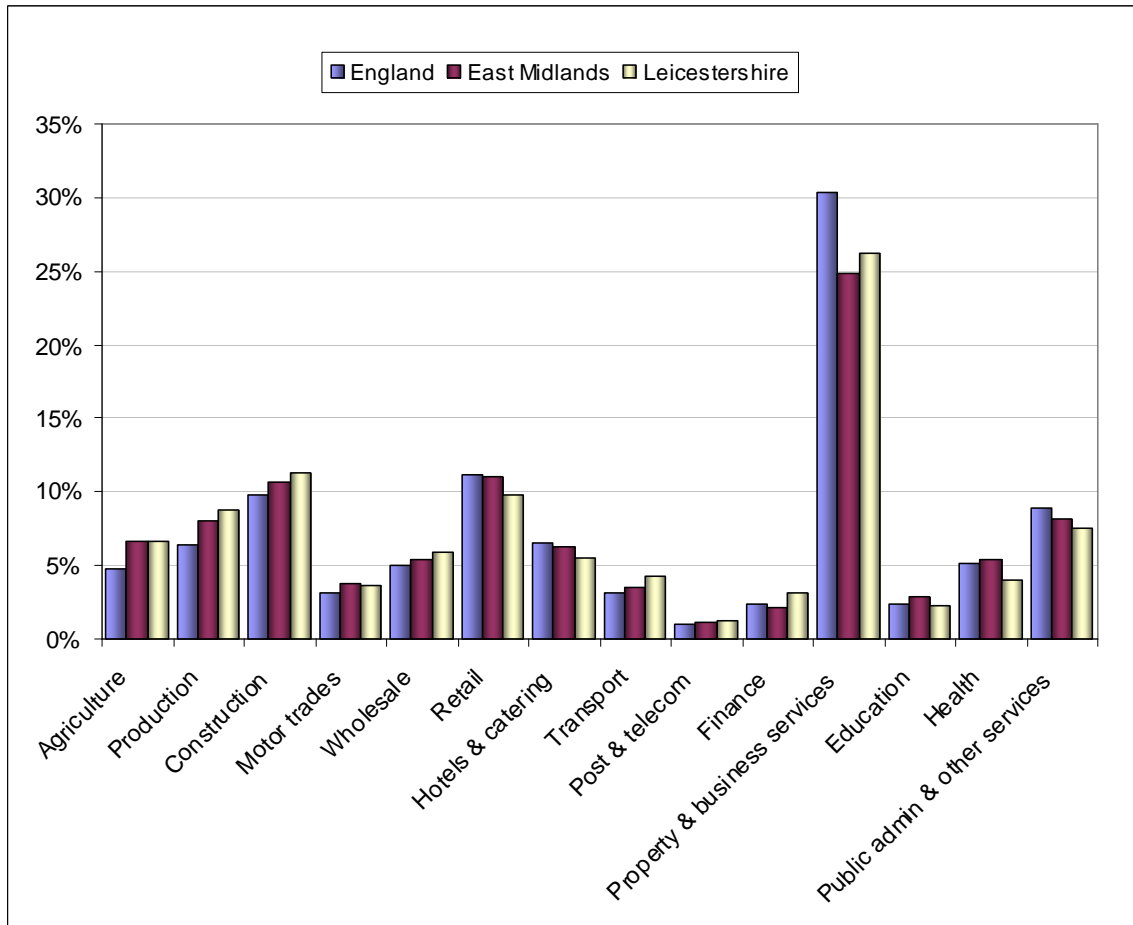


Source: ONS Estimates of resident population by ethnic group (experimental statistics). NB the chart does not show the White British Population figures.

80 The largest non-white community in Leicestershire is Indian (3.7%). Overall 7.7% of the population are non-white.

Employers and Employment in Leicestershire

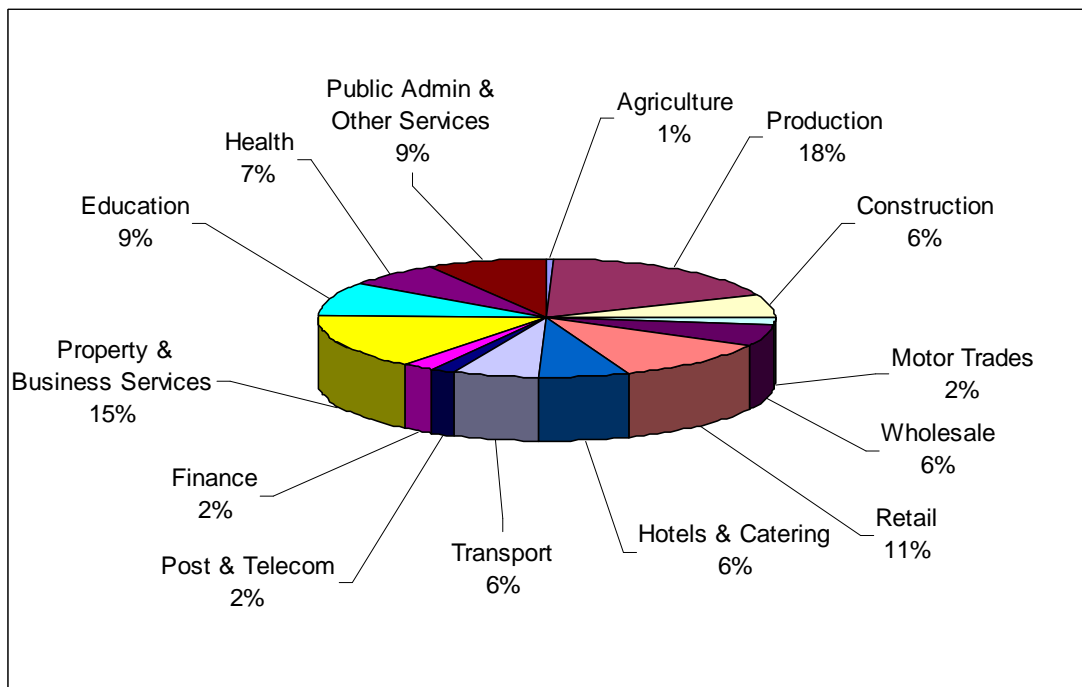
Figure 9: Distribution of business by broad industrial group



Source: Inter Departmental Business Register (IDBR) 2008

- 81 The largest sectors are 'Property & Business Services' (26.2%), 'Construction' (11.2%), and 'Retail' (9.7%), which are broadly in line with East Midlands largest sectors.

Figure 10: Employees in Leicestershire by sector, 2007



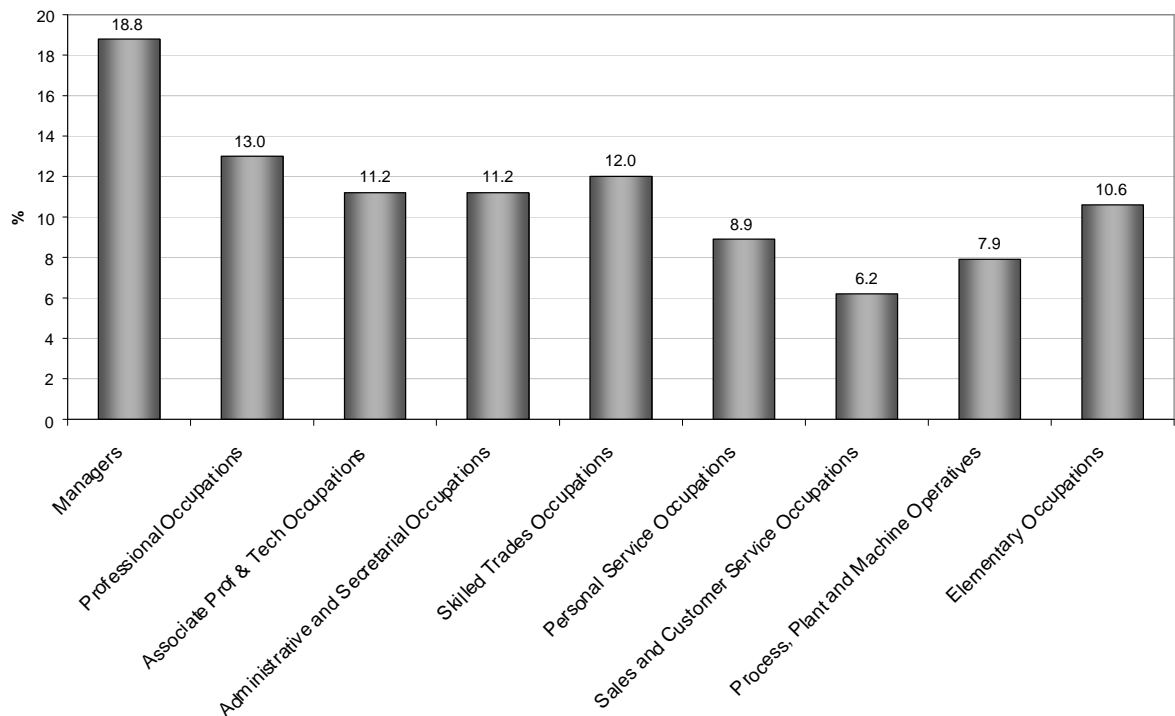
Source: Annual Business Inquiry (ABI)⁴ (2007)

- 82 The sectors employing the largest numbers of people are 'Production' (18%, 49200 persons), 'Property & Business Services' (15%, 41400 persons) and 'Retail' (11%, 31000 persons).

⁴ The Annual Business Inquiry (ABI) shows the distribution of employees by industry. The ABI is a survey of a sample of businesses within the IDBR. Therefore there are sampling errors as with any survey and results should be viewed as a guide not an absolute. All numbers rounded to nearest 100.

Skills

Figure 11: Employment by occupation group, 2007/08



Source: Annual Population Survey (APS), July 2007-June 2008

83 'Managers', 'Professional Occupations' and 'Associate Professional and Technical' are grouped together as 'Higher Occupations'. 'Administrative and Secretarial', 'Skilled Trades Occupations', 'Personal Service Occupations' and 'Sales and Customer Service Occupations' are grouped together as 'Intermediate Occupations'. 'Process, Plant and Machine Operators' and 'Elementary Occupations' are grouped together as 'Lower Occupations'. Recent and ongoing change is moving away from 'Lower' occupations towards 'Intermediate' and 'Higher' occupations.

84 'Managers' are now the largest single group at 18.8%. Higher occupations are now the largest combined group and the movement from 'Lower' to 'Higher' occupations is in the top two Local Authorities in East Midlands.

Table 42: Proportion of 19-59/64 population with qualifications by level, 2007

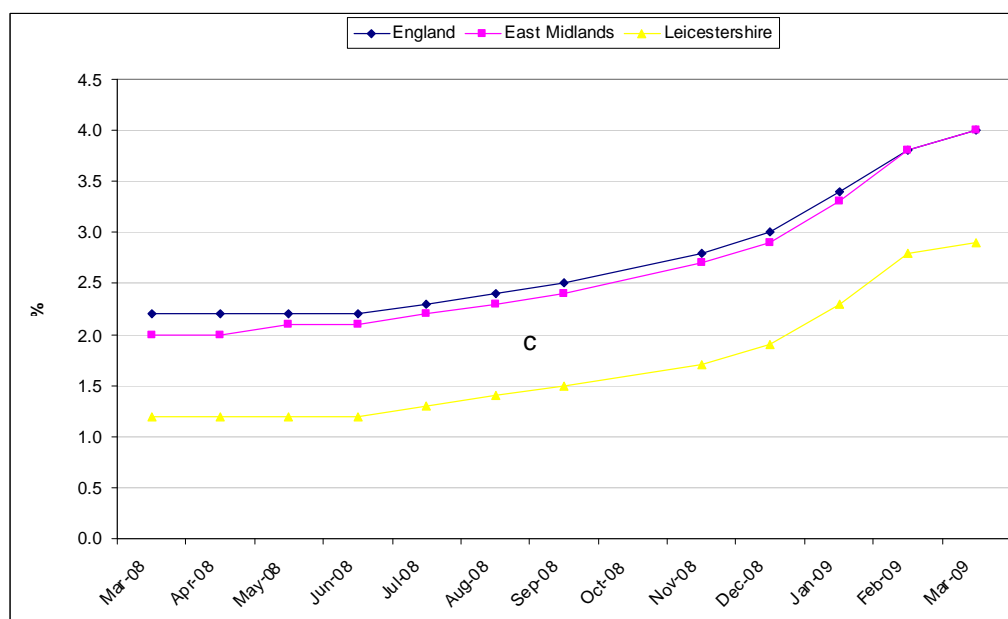
	Qualified to at least Level 4	Qualified to at least Level 3	Qualified to at least Level 2	Qualified lower than Level 2	Number (000s) with a qualification below Level 2	% with no qualifications	Number (000s) with no qualifications
Leicestershire	28.9%	50.8%	70.9%	19.4%	72	9.7%	36
Leicester City	24.0%	39.4%	57.6%	21.0%	36	21.4%	37
East Midlands	27.3%	47.0%	67.2%	19.7%	499	13.1%	331

Source: Annual Population Survey 2007, <http://www.dcsf.gov.uk/rsgateway/DB/STA/t000809/Table1.xls>

85 Leicestershire compares favourably with the region in terms of the qualification levels of its residents, particularly those qualified to at least Level 3 and 2. Leicestershire also has a lower proportion of its working-age population which have no qualifications compared to the regional average (9.7% against 13.1%).

Unemployment

Figure 12: Job Seekers Allowance Claimants Rates



Source: Jobcentre Plus via Office of National Statistics (ONS)

86 Over the last year Leicestershire has tracked around 1% below the National and Regional claimant levels. The March 09 figure is 2.9% (representing 11,600 persons). Currently Leicestershire has the second lowest claimant level in the East Midlands.

Part 5 - Sub-Regional Group (SRG) overview

- 87 This section is intended to bring together issues from each local authority within the Sub-Regional Group to inform the planning discussions by presenting a more rounded picture.
- 88 Participation of 16-18 year olds in education and training in both Leicester City and Leicestershire local authorities is good and above the regional average.
- 89 A key issue for all areas is the drop out at 17, which is significant and follows national trends.
- 90 Apprenticeship participation will be an issue in both areas. Participation will be affected by the recession as fewer employers come forward to offer places.
- 91 Achievement at Level 2 and 3 by age 19 is very different between the city and county. While the county has higher proportions of 19 year olds with Level 2 and Level 3 qualifications, the city has shown a faster rate of increase in achievement and has reduced the gap between the two areas.
- 92 The vast majority of Leicester city and Leicestershire 16-18 school sixth form learners access their learning within the SRG area. Very few sixth form learner, mainly from Leicestershire access school sixth form provision in other local authorities.
- 93 For resident FE learners, the majority of 16-18 learners access provision within Leicester and Leicestershire, particularly so for city residents. Leicestershire residents are more likely to access FE in other districts, primarily within the East Midlands.

