

i For information

>lsc

Leading learning and skills

16–19 Strategic Analysis for Lincolnshire

June 2009

Of interest to Local Authorities and other
Partners and Stakeholders involved in
14-19 planning

16-19 Strategic Analysis Lincolnshire

15 June 2009

Table of contents:

Introduction	3
Background and Issues for Consideration	5
Part 1 - 16-18 Resident learner participation	8
Analysis of participation by learning type 2007/08	8
Further Education (FE)	8
Apprenticeships	10
School Sixth Forms	13
Entry to Employment	16
September Guarantee	19
Travel to learn patterns	20
Further Education	20
Schools Sixth Forms.....	22
16-18 Resident Learner Achievement.....	23
FE Achievements	23
Apprenticeships Framework completions	23
School Sixth Forms	24
Part 2 - Progress to PSA targets at 19	26
Part 3 - Provision within Lincolnshire	29
Further Education Providers	29
FE Participation	29
FE Achievements	32
FE Funding.....	33
School Sixth Forms.....	34
S6F Participation	34
S6F Achievement	35
S6F Funding.....	37
Apprenticeships	38
Apprenticeship Participation	38
Apprenticeship Achievements	40
Apprenticeships: Funding	42
Part 4 - Area Context	43
14-19 Population information	43
Employers and Employment in Lincolnshire	45
Skills.....	47
Unemployment.....	48
Part 5 - Sub-Regional Group (SRG) overview	49

Introduction

This 16-19 report is the first in a series of three to be published for Local Authorities (LAs) over the next 3 months. The purpose of the reports is to provide, in the Machinery of Government Transition year, sufficient details of 16-19 provision and learners for Local Authorities to be able to:

- a) Complement their existing strategic planning for 14-19 in the context of economic and employment information for their area
- b) Develop detailed commissioning plans at LA and Strategic Regional Group levels
- c) Focus on specific areas for improvement in their planning
- d) Understand the provision accessed by their residents
- e) Understand the scope and quality of the provision for those learners, wherever they are resident who choose to learn within providers situated within the LA's boundaries.

What the Series One report contains

Series one report contains sufficient detail of provision accessed by residents to enable points (a), (c) and (d) above. In addition, by its focus on providers it also allows LAs to achieve points (b) and (e) above.

Series Two and Three reports

These reports will provide more detail of specific provision and groups of learners, such as those with Learning Difficulties and/or Disabilities (LDD) and those on Entry to Employment (E2E) programmes. In addition details of the curriculum offered in 16-18 institutions and the characteristics of learners studying those curricula will be provided. It is intended that the series two and three reports will aid LAs in particular in the execution of points (b) and (c) above by increasing their understanding of need and provision. Planned final volumes of learners and funding for 2009/10 for the relevant providers in each Local Authority will also be part of series two reports.

Data for the reports

Where relevant data is published nationally by the Department for Children, Schools and Families, such as that in statistical first reports, or by the Office for National Statistics, this data has been used. Much of the remaining data comes from submissions on the Individual Learner Record (ILR) made by providers to the LSC, from school census data, or from internal LSC systems designed to deal with allocations of funding to providers. Since data comes in at specific times of the year for FE and schools, only whole year data is provided for these types of institutions. This restricts these data sets to 2005/06 to 2007/08. For E2E and Apprenticeships, data arrives monthly, so in-year (2008/09) data is provided in these cases.

In January, 2007, the LSC consulted with the sector on a new funding approach in the document *Delivering World-class Skills in a Demand-led System*. Following this consultation the LSC's funding approach changed significantly for 2008/09. This has had an effect on how the data is collated and aggregated together in 2008/09. Therefore it is urged that when making comparisons across these two years this change is taken into consideration.

Accessing the reports and information

The reports will be made available via the LSC's external website. Where information is confidential a separate file will be provided for LAs on disc. From July 2009, an updated data website will be available for LAs.

Background and Issues for Consideration

- 1 The working-age employment rate in Lincolnshire is above both the regional average (77.3% compared to 76.2%) and the England average (74.5%)¹. The level of economic inactivity (18.1%) is also lower than the region (19.3%) and the national level (21.1%). The unemployment rate (5.5%) was similar to the regional and national averages².

The largest number of **employers** is to be found in 'Property & Business Services' (20.5%), 'Agriculture' (13.7%), and 'Construction' (11.6%). Compared to the region as a whole, Lincolnshire has the highest level of 'Agriculture' units with only Rutland coming close to these levels³.

The greatest proportions of **employees** are to be found in 'Production' (16%), 'Property & Business Services' (13%), 'Health' (13%) and 'Retail' (12%)⁴.

- 2 Reviewing occupations⁵ within Lincolnshire, 'Managers' are now the single largest group at 15.9%. 'Higher' occupations are now approaching the same percentage as 'Intermediate' occupations as the movement from 'Lower' to 'Higher' occupations become more pronounced.
- 3 Vacancy rates and 'Hard to Fill' vacancy rates are higher than those in the East Midlands and both had increased between 2005 and 2007⁶. Skill shortage vacancies had fallen during the same period and were lower than the region as a whole⁷. Employers in Lincolnshire were found to recruit more 17-18 year olds than they would 16 year olds or graduates⁸.
- 4 Compared to the region, Lincolnshire has a lower percentage of its working-age population qualified to at least Level 4 (24.9% against 27.3%) and to at least Level 3 (46% compared to 47%) but a similar proportion qualified to at least Level 2 (67.4% to 67.2%)⁹. A higher percentage in Lincolnshire had qualifications below 2 (22.2% against 19.7%) compared to the region but there was a lower proportion with no qualifications (10.4% against 13.1%).
- 5 Participation¹⁰ in education and training of 16 and 17 year olds combined is 76%, 77% and 77% for 2004, 2005 and 2006 respectively. This was lower than the regional averages over the same three years (77%, 78% and 79%). However, like the region, Lincolnshire was also still below the overall England position during the same period (80%, 81% and 82% respectively).
- 6 Over the three years, participation at 16 has fluctuated (82%, 81% and 83% in 2004, 2005, and 2006 respectively), which was a similar pattern at 17

¹ Annual Population Survey October 2007-September 2008

² Annual Population Survey October 2007-September 2008

³ Inter Departmental Business Register (IDBR) 2008

⁴ Annual Business Inquiry (ABI) 2007

⁵ Annual Population Survey – July 2007 – June 2008

⁶ The National Employer Skills Survey 2007: report of results from the East Midlands (July 2008) (http://readingroom.lsc.gov.uk/lsc/EastMidlands/Regional_NESS_2007_Report_July_08a.pdf)

⁷ See footnote 6

⁸ See footnote 6

⁹ DCSF – Highest qualification held by population aged 19-59/64, 2007

¹⁰ DCSF – Participation in education and WBL of 16 & 17 year olds by LEAs in England

(70%, 73% and 72% respectively). The comparable position for the East Midlands (83% - 16 and 74% -17) and England overall (87% - 16 and 77% - 17) has improved in 2006 compared to previous years.

- 7 From peak levels of 14-19 population in 2007-09, Lincolnshire is projected to see a steady decline until 2018-19. The 2018-19 level is forecasted to be around 8% lower.
- 8 In 2006¹¹, 36% and 3% of 16 year olds studied in Maintained and Independent School Sixth Forms. The percentage in Maintained Schools Sixth Forms is higher than the region (34%) and in England overall (30%). School learner numbers have increased in the last four years by 13%¹².

The number of learner residents from Lincolnshire participating in FE colleges has risen from 2006/07 to 2007/08 (+3.1%). Early indications for 2008/09 show a further increase in learner numbers¹³.

Apprenticeship numbers amongst Lincolnshire's learner residents have decreased between 2006/07 and 2007/08 by 5.4%¹⁴. This is higher than the decrease seen in the region overall (-2.3%). Early 2008/09 data also indicates a decline in numbers compared to the same point in the previous year (-7.2%), which was also above the regional average (-5%)¹⁵.
- 9 Achievement of Level 2¹⁶ at 16 in 2007/08 was 70.5% which was well above the regional and England average (62.7% and 64.8% respectively). When English and Maths are taken into account, Lincolnshire at 52.2% was also below regional and national averages.
- 10 For Levels 2 and 3 at 19¹⁷ (PSA Target), the results for the cohort who are age 19 in 2007/08 was 74% and 48% respectively. For Level 2 this was just above the regional average (73.1%) but below the national average (76.7%). The same picture was apparent for Level 3 (46% and 50% respectively).
- 11 For Level 2, comparing improvements between 2003/04 and 2007/08 Lincolnshire has increased by 8.4 percentage points, whilst the region and England overall has increased by 9.9 and 10.4 percentage points respectively. For Level 3 comparing the same period, Lincolnshire has increased by 7.3 percentage points, which was similar to the improvements seen in the region and England overall (7.2 and 7.8 percentage points respectively).
- 12 In 2007/08¹⁸, the success rates for provision in FE colleges in Lincolnshire's institutions for Full Level 2 (75.5%) were above the regional average (74%), but similar for Full Level 3 (74.3% compared to 74%). The overall success rate for Lincolnshire (75.8%) was 3.1 percentage points below the regional rate. Comparing 2007/08 to the previous year, Lincolnshire's Full Level 2 success rates have improved by 5 percentage points, whilst Full Level 3

¹¹ DCSF – Participation in education and WBL of 16 & 17 year olds by LEAs in England

¹² See paragraph 30 and Figure 1

¹³ See Table 1

¹⁴ See Table 6

¹⁵ See Table 10

¹⁶ DCSF – School Performance Tables 2007/08

¹⁷ Fisher Family Trust matched administrative dataset 2007/08

¹⁸ ILR - FE Success Rates Drill Downs Detail 05/06 - 07/08.xls

rates have improved by 6.3 percentage points. Overall success rates increased by 4.3 percentage points.

In 2007/08¹⁹, 1469 Full Level 2 aims were achieved which is a 15% increase over 2006/07. 1,172 Full Level 3 aims were achieved in 2007/08 which is a 30% increase over 2006/07. Overall 13,127 aims were achieved, a 22% increase since 2006/07²⁰.

- 13 In 2007/08 Lincolnshire and Rutland LSC achieved 494 and 156 Framework Completions in Apprenticeships (A) and Advanced Apprenticeships (AA) respectively²¹. This represented a decrease of -4.6% (A) and an increase of 12.2% (AA). The overall success rate²² in 2007/08 was 66%, which was an increase of 10 percentage point over 2006/07 rates. Lincolnshire was also above the regional overall success rates (65%).

Issues for consideration/improvement

- Participation in education of 16 and 17 year olds needs to continue to improve in line with the raising of the participation age, and the drop out between 16 and 17 needs to change.
- Achievement at Level 2 and Level 3 by 19 has continued to improve year on year and rates are above regional levels. It is vital to sustain this improvement.
- Apprenticeship participation has been decreasing which may be a reflection of the current economic downturn. However, the completion rates for Apprenticeships in Lincolnshire have improved considerably.

¹⁹ See footnote 18

²⁰ ILR FE Success Rates – Detail – 05/06 -07/08 drilldowns.xls

²¹ Source: ILR - WBL New Measures of Success Rates Drill Downs 2007/08

²² Source: ILR - WBL New Measures of Success Rates Drill Downs 2007/08

Part 1 - 16-18 Resident learner participation

- 14 This section shows where the young people living within Lincolnshire local authority are learning and highlights any issues relating to demand by residents for learning within the area.

Analysis of participation by learning type 2007/08

Further Education (FE)

Table 1: East Midlands 16-18 FE learners by LA of residence

Learner LEA	2006/07 (full year)		2007/08 (full year)		2008/09 (as at March 2009)	
	Learners	% of East Midlands	Learners	% of East Midlands	Learners	% of East Midlands
Derby City	3,401	5.9%	3,575	6.0%	3,406	5.7
Derbyshire	9,644	16.8%	9,708	16.3%	9,746	16.2
Leicester City	6,637	11.5%	6,850	11.5%	7,016	11.7
Leicestershire	6,856	11.9%	7,098	11.9%	6,996	11.6
Lincolnshire	8,144	14.2%	8,400	14.1%	9,011	15.0
Northamptonshire	8,186	14.2%	8,424	14.1%	8,366	13.9
Nottingham City	4,811	8.4%	5,082	8.5%	4,965	8.3
Nottinghamshire	9,336	16.2%	9,702	16.3%	10,136	16.8
Rutland	523	0.9%	562	0.9%	525	0.9
(Unknown based on Postcode)			237	0.4%		
Total East Midlands	57,538	100.0%	59,638	100.0%	60,167	100.0%

Source: 2007/08 ILR F05 returns (FE 0506-0708 Learner Drill down) and 2008/09 ILR F02 return

- 15 The 16-18 population resident in Lincolnshire who are engaged in learning in Further Education has grown steadily over the last three years. In 2006/07 there were 8,144 learners studying in Further Education. This rose to 8,400 in 2007/08. This was a growth of 3.1 %, which is below the East Midlands figure of 3.6%. In 2007/08, Lincolnshire residents represented 14.1% of all 16-18 year old FE learners within East Midlands.

Table 2: Lincolnshire 16-18 FE learners by gender

	Year	Female		Male	
Lincolnshire	2006/07	4,265	52.4%	3,879	47.6%
	2007/08	4,342	51.7%	4,058	48.3%
East Midlands	2006/07	29,226	50.8%	28,312	49.2%
	2007/08	30,217	50.7%	29,421	49.3%

Source: 2007/08 ILR F05 returns (FE 0506-0708 Learner Drill down)

- 16 Using LSC data returns, the female/male gender split in FE learners in 2006/07 and 2007/08 was 52.4% to 47.6% and 51.7% to 48.3% respectively. This is broadly comparable to the regional averages. The data returns are

comparable with Office of National Statistics (ONS) Mid 2007 Population Estimates which show the 16-18 year old population female/ male split in Lincolnshire was 48.3% to 51.7%.

Table 3: Lincolnshire 16-18 FE learners by ethnicity

	Year	Asian		Black		Chinese		Mixed		Other		Unknown		White	
Lincolnshire	2006/07	29	0%	30	0%	17	0%	81	1%	28	0%	26	0%	7,933	97%
	2007/08	32	0%	29	0%	15	0%	88	1%	21	0%	76	1%	8,139	97%
East Midlands	2006/07	4,935	9%	1,769	3%	164	0%	1,781	3%	487	1%	669	1%	47,733	83%
	2007/08	4,973	8%	1,881	3%	174	0%	1,839	3%	471	1%	656	1%	49,644	83%

Source: 2007/08 ILR F05 returns (FE 0506-0708 Learner Drill down)

- 17 LSC data returns show that the White community in Lincolnshire represented 97% of the population learning in Further Education in both 2006/07 and 2007/08. This is above the East Midlands average of 83%, but reflects the overall population make-up of the area²³. The England split white to non-white is 88.7% to 11.3% (ONS MID 2006 Experimental Ethnicity Estimates).
- 18 In 2007/08 the largest single ethnic group was the Mixed community representing 1% of the population. This is in contrast to the overall non-white population in the area, which predominantly includes communities from an Indian or Chinese ethnic background²⁴.

Table 4: Lincolnshire 16-18 FE learners by highest level of study

	Year	Notional Level									
		Entry and Level 1		Level 2		Level 3		Level 4, 5 and Higher		Other (including Mixed)	
Lincolnshire	2006/07	1,428	18%	2,501	31%	4,201	52%	9	0%	5	0%
	2007/08	1,583	19%	2,491	30%	4,295	51%	11	0%	20	0%
East Midlands	2006/07	10,785	19%	17,631	31%	28,939	50%	65	0%	118	0%
	2007/08	12,359	21%	17,496	29%	29,556	50%	53	0%	174	0%

Source: 2007/08 ILR F05 returns (FE 0506-0708 Learner Drill down)

- 19 In 2007/08, 51% of 16-18 FE learners resident in Lincolnshire were studying at Level 3, just above the regional average of 50%. 30% of learners were studying at Level 2, which again was marginally above the regional average of 29%. For qualifications at Entry Level and Level 1, on average, more learners in the region overall were studying at this level than in Lincolnshire (21% compared to 19%).

²³ See Figure 8

²⁴ See Figure 8

Apprenticeships

- 20 This section examines the participation of learners living in the Lincolnshire LA area who have undertaken or are undertaking Apprenticeships. The data includes learners who have been funded by East Midlands LSC areas, other LSC areas in England or the National Employer Service. An average of the number of learners undertaking Apprenticeships in a given month over a 12 month period is used to show participation in the 2006/07 and 2007/08 tables.

Table 5: Resident Learners by LA Level participating on Apprenticeships and proportion within the East Midlands

Local Authority	2006/07	% East Midlands	2007/08	% East Midlands
Derby City	832	6.0	843	6.3
Derbyshire	2769	20.1	2657	19.7
Leicester City	519	3.8	477	3.5
Leicestershire	1949	14.1	1899	14.1
Lincolnshire	2128	15.4	2013	14.9
Northamptonshire	2043	14.8	1994	14.8
Nottingham City	755	5.5	774	5.7
Nottinghamshire	2740	19.9	2767	20.5
Rutland	67	0.5	55	0.4
EAST MIDLANDS	13,802	100.0	13,479	100.0

Source: ILR - WBL AND E2E DRILL DOWNS 2006/07 and 2007/08 (July 2007 and July 2008)
Average in Learning data

- 21 As a proportion of the region, 14.9% of resident learners from Lincolnshire LA area were undertaking Apprenticeships in 2007/08.

Table 6: 16-18 Apprenticeship Participation by Programme Level, 2006/07 – 2007/08

Area	Programme Level	2006/07	2007/08	% change 2006/07 - 2007/08
Lincolnshire LA	Apprenticeships	1383	1305	-5.6
	Advanced Apprenticeships	745	708	-5.0
	Total	2128	2013	-5.4
East Midlands	Apprenticeships	8905	8719	-2.1
	Advanced Apprenticeships	4897	4760	-2.8
	Total	13,802	13,479	-2.3

Source: ILR - WBL AND E2E DRILL DOWNS 2006/07 and 2007/08 (July 2007 and July 2008)
'Average in Learning' data

- 22 Between 2006/07 and 2007/08, there was a decrease in overall Apprenticeship participation amongst learners resident in Lincolnshire (-5.4%). This is twice the overall decrease in the region (-2.3%). The reduction was similar in both Apprenticeships and Advanced Apprenticeships.

Table 7: 16-18 Overall Apprenticeship Programme Participation by Gender, 2006/07 – 2007/08

Area	Gender	2006/07		2007/08	
		Number	%	Number	%
Lincolnshire LA	Female	765	36.0	685	34.0
	Male	1363	64.0	1328	66.0
	Total	2128	100.0	2013	100.0
East Midlands	Female	4,958	35.9	4,916	36.5
	Male	8,844	64.1	8,563	63.5
	Total	13,802	100.0	13,479	100.0

Source: ILR - WBL AND E2E DRILL DOWNS 2006/07 and 2007/08 (July 2007 and July 2008)
'Average in Learning' data

- 23 There were proportionately fewer females undertaking Apprenticeships amongst Lincolnshire resident learners in both 2006/07 and 2007/08. Between the two years 2006/07 and 2007/08, there has been a decrease in the volume of both female and male participation. This is in line with the regional picture.

Table 8: 16-18 Overall Apprenticeship Programme Participation by Ethnicity, 2006/07 – 2007/08

Area	Ethnicity	2006/07		2007/08	
		Number	%	Number	%
Lincolnshire LA	Ethnic Minority	15	0.7	18	0.9
	White	2,109	99.1	1,984	98.6
	Not Known	5	0.2	11	0.5
	Total	2,128	100.0	2,013	100.0
East Midlands	Ethnic Minority	420	3.0	472	3.5
	White	13,335	96.6	12,953	96.1
	Not Known	47	0.3	54	0.4
	Total	13,802	100.0	13,479	100.0

Source: ILR - WBL AND E2E DRILL DOWNS 2006/07 and 2007/08 (July 2007 and July 2008)
'Average in Learning' data

- 24 There was a lower proportion of minority ethnic residents from Lincolnshire undertaking an Apprenticeship compared to the regional average in 2006/07 and 2007/08. This is in line with the lower ethnic population mix in Lincolnshire compared to that in the region as a whole. Also, like the region, there was a small increase in participation by this group in 2007/08.
- 25 Learners on Apprenticeships, as in FE, are asked whether they feel they have a learning difficulty and/or disability and so the numbers shown here and in later tables reflect learners who have self-declared a difficulty or disability.

Table 9: 16-18 Overall Apprenticeship Programme Participation by Learners with Learning Difficulties and/or Disabilities (LLDD), 2006/07 – 2007/08

Local Authority	2006/07				2007/08			
	No Disability /Learning Difficulty	Not Known/ Not Provided	Disability/ Learning Difficulty Recorded	% with Disability/ Learning Difficulty	No Disability /Learning Difficulty	Not Known/ Not Provided	Disability/ Learning Difficulty Recorded	% with Disability/ Learning Difficulty
Lincolnshire LA	2,036	10	82	3.9	1,940	14	59	2.9
EAST MIDLANDS	12,987	53	762	5.5	12,768	65	646	4.8

Source: ILR - WBL AND E2E DRILL DOWNS 2006/07 and 2007/08 (July 2007 and July 2008)
'Average in Learning' data

26 There has been a marginal decrease in the volume and proportion of learners with a learning disability and/or disability from Lincolnshire undertaking Apprenticeships in 2007/08 since 2006/07. This reflects the reduction in the overall region. In 2007/08, 3% of learners were recorded as having learning difficulties and/or disabilities.

2008/09 Data – Period 8 (latest to March 2009)

27 Latest information on Apprenticeships is available up to March 2009 in the academic year. The data below provides provisional indications of current participation on the Apprenticeship programme by learners resident in Lincolnshire. Data as at March 2008 for 2007/08 is used to compare the current picture.

Table 10: 16-18 Apprenticeship Participation, 2008/09

Area	Programme Level	2007/08 (March 08)	2008/09 (March 09)	2007/8 - 2008/09 Change	
				Number	% Change
Lincolnshire LA	Apprenticeship	1395	1,314	-81	-5.8
	Advanced Apprenticeship	776	700	-76	-9.8
	Total	2,171	2,014	-157	-7.2
East Midlands	Apprenticeship	9036	8,577	-459	-5.1
	Advanced Apprenticeship	4990	4,748	-242	-4.9
	Total	14,027	13,325	-702	-5.0

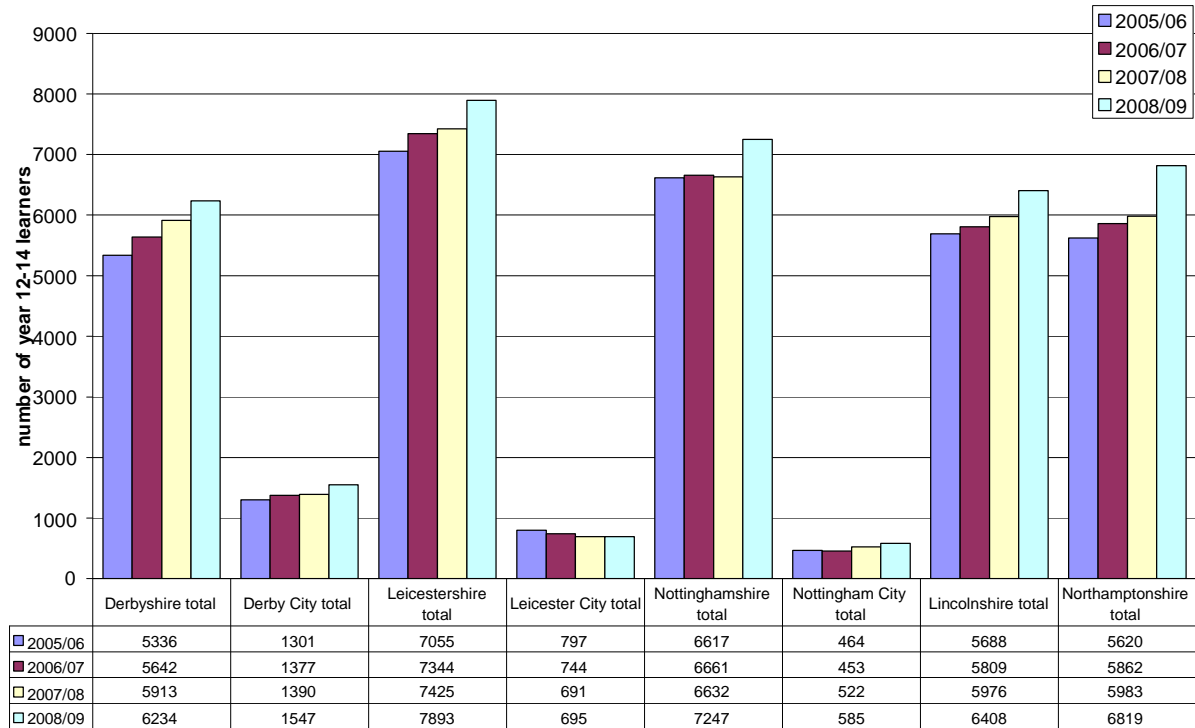
Source: ILR -Employer Responsive Drill Downs 2008/09, Period 8 (March 2009), WBL and E2E 2007/08 Period 8 Drill Downs (March 2008)

28 Overall, Apprenticeship participation as at the end of March is considerably lower in 2008/09 compared to the same period in 2007/08 amongst learners residing in Lincolnshire (-157 learners, -7.2%). This also reflects the regional picture and is an indication of the difficult economic conditions.

School Sixth Forms

29 This section provides Schools Sixth Form learner participation information in Lincolnshire local authority area.

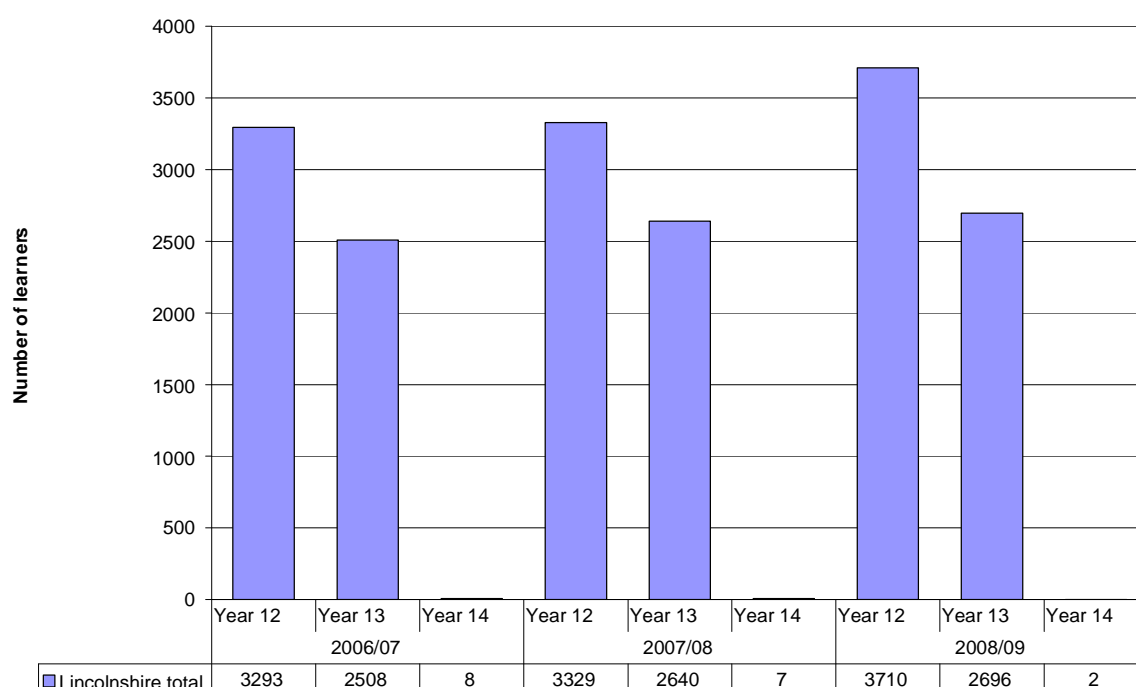
Figure 1: 16-18 learner numbers in school sixth forms, 2006/07-2008/09



Source: PLASC, 2006-2008

- 30 On comparing 2005/06 to 2008/09, there has been an increase of 13% in the Schools Sixth Form population.
- 31 Lincolnshire saw an increase of 432 learners in Years 12-14 in 2008/09, a 7% increase on 2007/08 numbers. However, this increase was one of the lower rates of increase in the East Midlands.

Figure 2: Learner numbers in Years 12-14 for Lincolnshire, 2006/07-2008/09



Source: PLASC, 2006-2008

- 32 Similar to previous years, in 2008/09, there was a 27% decrease in learners in the cohort between years twelve and thirteen in Lincolnshire School Sixth Forms. A very small percentage stayed on in learning into year 14.

Table 11: 16-18 learners attending a Schools Sixth Form funded by the LSC East Midlands: Gender breakdown (% of total group)

School LA	2007/08 Learners		2008/09 Learners	
	Female %	Male %	Female %	Male %
Derby City	54.5	45.5	54.2	45.8
Leicester City	51.5	48.5	49.4	50.6
Nottingham City	57.3	42.7	56.4	43.6
Nottinghamshire	53.1	46.9	53.3	46.7
Derbyshire	53.4	46.6	53.0	47.0
Leicestershire	52.3	47.7	50.5	49.5
Lincolnshire	53.2	46.8	53.1	46.9
Northamptonshire	53.3	46.7	52.6	47.4
East Midlands	53.1	46.9	52.5	47.5

Source: LSC MI 2007/08 and 2008/09 Schools Sixth Form Analysis

- 33 The proportional gender split of those attending a Schools Sixth Form in Lincolnshire is similar to the region both in 2007/08 and 2008/09, with more females participating than males.

**Table 12: 16-18 learners attending a Schools Sixth Form funded by the LSC
East Midlands: Ethnicity breakdown (% of total group)²⁵**

LA Area	Year	Any Other	Asian or Asian British	Black or Black British	Chinese	Mixed Heritage	Not Known/Not Provided	White
Derby	2007/08	0.2	16.0	2.6	1.0	2.5	2.2	75.4
	2008/09	0.7	14.7	2.1	0.8	2.3	1.3	78.1
Leicester	2007/08	1.0	40.1	5.8	0.0	7.1	0.9	45.1
	2008/09	1.2	38.6	6.4	0.1	5.7	1.9	46.1
Nottingham	2007/08	0.2	14.5	10.7	1.1	4.5	0.9	68.0
	2008/09	1.0	19.1	8.9	0.5	5.2	0.2	65.1
Nottinghamshire	2007/08	0.4	2.4	0.9	0.6	1.1	0.8	93.9
	2008/09	0.4	2.5	0.8	0.8	1.4	1.4	92.6
Derbyshire	2007/08	0.1	0.9	0.2	0.4	1.2	0.6	96.6
	2008/09	0.2	0.8	0.2	0.3	1.1	0.8	96.5
Leicestershire	2007/08	0.3	12.1	0.5	0.5	2.0	2.0	82.5
	2008/09	0.3	11.8	0.6	0.5	2.2	2.6	82.0
Lincolnshire	2007/08	0.5	1.3	0.6	0.7	1.1	0.9	95.0
	2008/09	0.3	1.1	0.6	0.7	1.1	1.1	95.1
Northamptonshire	2007/08	0.4	4.6	2.3	0.5	2.5	1.5	88.2
	2008/09	0.4	4.6	2.9	0.5	2.7	1.2	87.9
East Midlands	2007/08	0.3	5.9	1.2	0.6	1.8	1.2	89.0
	2008/09	0.4	5.7	1.3	0.6	1.9	1.4	88.7

Source: LSC MI 2007/08 and 2008/09 Schools Sixth Form Analysis

- 34 Compared to the region as a whole, Schools Sixth Forms in Lincolnshire had a higher proportion of learners from a White background. This matches the overall population make-up of the area.

²⁵ Asian or Asian British includes those who are Indian, Pakistani or Bangladeshi or from any other Asian background. Black or Black British includes those with an African or Caribbean heritage or from any other Black background. Mixed heritage includes those who are White and Asian, White and Black African, White and Black Caribbean or from any other Mixed heritage background. White includes those who are White British, White Irish or from any other White background.

Table 13: 16-18 learners attending a Schools Sixth Form funded by the LSC East Midlands: Special Educational Needs (SEN) (% of total group)

LA NAME	2007/08 Learners				2008/09 Learners			
	School/ Early Years Action %	School/ Early Years Action + %	Statement %	No SEN %	School/ Early Years Action %	School/ Early Years Action + %	Statement %	No SEN %
Derby	1.1	0.1	1.0	97.7	4.7	0.7	1.1	93.6
Leicester	5.6	2.4	0.3	91.7	6.9	3.1	0.7	89.3
Nottingham	5.6	2.4	0.4	91.5	5.5	2.1	0.3	92.1
Nottinghamshire	4.0	0.5	0.4	95.1	4.8	0.8	0.6	93.8
Derbyshire	1.9	0.8	0.4	96.8	1.5	1.1	0.6	96.9
Leicestershire	1.9	1.0	1.1	96.0	2.4	1.1	1.0	95.5
Lincolnshire	2.5	1.1	0.9	95.4	4.2	1.5	0.9	93.4
Northamptonshire	3.2	0.8	0.8	95.2	5.7	1.2	0.9	92.2
East Midlands	2.8	0.9	0.7	95.6	3.8	1.2	0.8	94.2

Source: LSC MI 2007/08 and 2008/09 Schools Sixth Form Analysis

- 35 Table 13 shows the proportion of 16-18 learners with Special Educational Needs (SEN) attending Schools Sixth Forms across local authority areas in the East Midlands in 2007/8 and 2008/09. The variation in the data is partly a reflection of differing Local Authority policies with regard to learners with Special Educational Needs. Further detailed information about learners with Special Educational Needs will be provided in the second series separate report

Entry to Employment

- 36 This section provides summary information about learners who have undertaken Entry to employment (E2E) learning in 2006/07 and 2007/08.
- 37 More detailed information about the learners in terms of gender, ethnicity and learning difficulties and/or disabilities will be available in the next phase of these reports at the end of June.

Table 14: E2E trends in Starts, Occupancy, and Average Length of Stay 2006/07 – 2007/08: learners living in local authority areas

2005/06 -2007/08 Summary	2006/07	2007/08	2006/07	2007/08	2006/07	2007/08	2006/07	2007/08
	Starts		Participation (Occupancy)*		Total Leavers		Average Stay (weeks)	
Derby City	550	473	196	182	524	431	15.5	16.2
Derbyshire	811	886	286	336	732	804	14.8	16.0
Leicester City	356	401	142	161	337	376	16.3	16.8
Leicestershire	312	380	119	148	318	342	15.1	15.9
LINCOLNSHIRE	621	613	272	297	573	553	20.9	19.1
Northamptonshire	711	676	274	287	652	694	17.2	17.9
Nottingham City	314	335	143	178	285	288	21.9	23.5
Nottinghamshire	662	609	323	438	636	552	21.2	24.4
Rutland	7	3	5	7	11	1	22.2	19.3
EAST MIDLANDS	4344	4376	1760	2033	4068	4041	17.8	18.5

Source: ILR - WBL and E2E drill downs 2006/07 – 2007/08. *Occupancy shows the average number of learners on an E2E programme in one month during a 12 month period.

- 38 Lincolnshire has seen a slight decrease in starts but an increase in participation in E2E between 2006/07 and 2007/08. This is in contrast to the overall region picture which has seen an increase in both.
- 39 However, the average stay in E2E learning (by weeks) has decreased marginally during this period. The average length of stay in Lincolnshire (19.1 weeks) in 2007/08 was above still that of the region (18.5 weeks).

Table 15: E2E trends in Positive Outcomes: Overall Positive Outcomes, FE and Apprenticeships (App) 2006/07 – 2007/08: learners living in local authority areas

2006/07 - 2007/08 Summary	Positive outcomes									
	2006/07					2007/08				
	OVERALL	emp WITH training	emp WITHOUT training	FE	APP.	OVERALL	emp WITH training	emp WITHOUT training	FE	APP.
Derby City	229	21	69	101	38	219	20	50	122	27
Derbyshire	358	39	113	139	67	395	40	108	181	66
Leicester City	162	14	54	49	45	218	16	51	84	67
Leicestershire	162	44	52	44	22	196	27	61	79	29
LINCOLNSHIRE	309	77	115	82	35	311	35	120	129	27
Northamptonshire	304	30	137	99	38	350	91	84	126	49
Nottingham City	104	15	29	51	9	124	23	26	58	17
Nottinghamshire	305	32	110	101	62	301	32	76	131	62
Rutland	9	0	7	2	0	1	1	0	0	0
EAST MIDLANDS	1942	272	686	668	316	2115	285	576	910	344

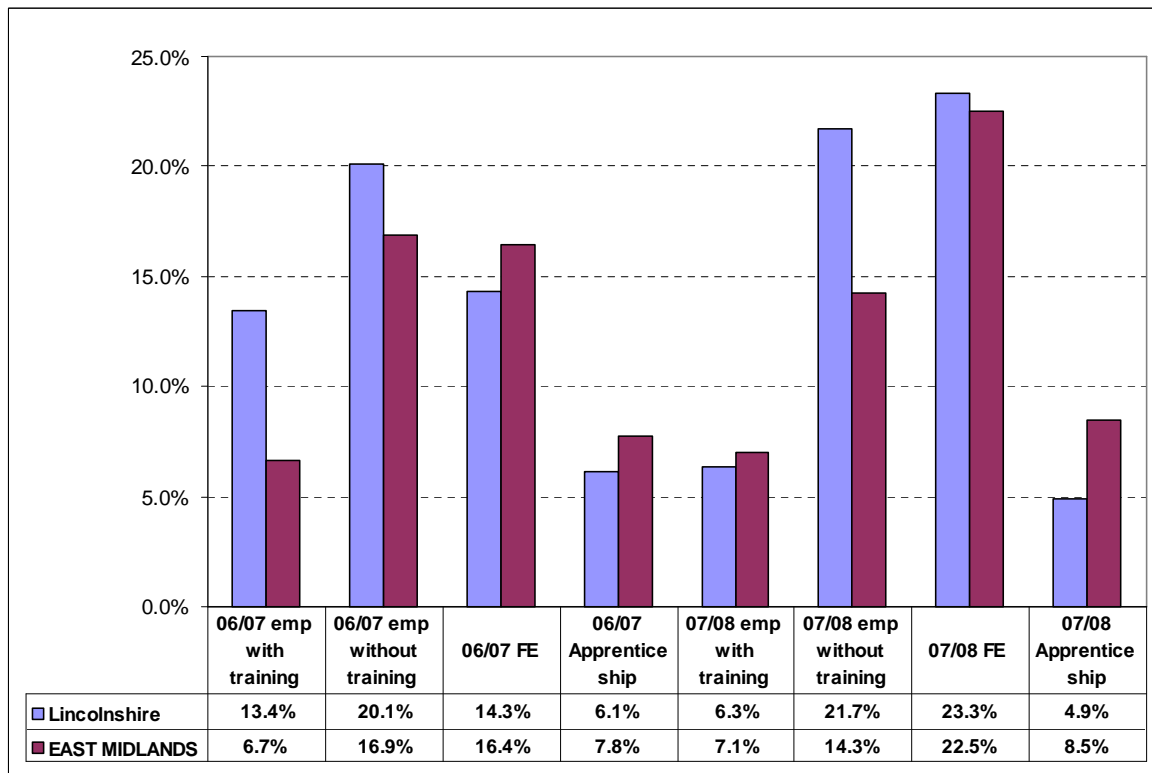
Source: ILR - WBL and E2E drill downs 2006/07 – 2007/08

- 40 A positive outcome from an E2E programme in LSC terms is a learner who progresses to either FE, an Apprenticeship or other employment with training. In LSC terms employment **without** training is not a positive

outcome, but for ease of reading the employment without training figures have been included in table 12 above.

- 41 The number of overall positive outcomes from E2E learning amongst Lincolnshire’s residents increased by 0.6% between 2006/07 and 2007/08 which was considerably lower than the regional average. The proportion of Young People progressing into Apprenticeships decreased from 11% to 9% over this period whilst regional figures remained static, whilst those going into FE rose by 15 percentage points. The proportion of young people leaving the programme to go to a job without training increased by 1 percentage point over this period whereas the regional average fell by 8 percentage points. Lincolnshire compared favourably with the region on outcomes into FE, which rose by 15 percentage points during this period, whilst the region had a 9 percentage point increase.

Figure 3: Lincolnshire Learners - E2E trends in Positive Outcomes: Overall Positive Outcomes, FE and Apprenticeships (App) 2006/07 – 2007/08



Source: ILR - WBL and E2E drill downs 2006/07 – 2007/08

2008/09 Data – Latest position to January 2009

- 42 Table 16 presents the latest position (to January 2009) on E2E starts by learners living in local authority areas in the region.

Table 16: 2008/09 latest E2E Learner Starts – Learners Living in the East Midlands

Local Authority Area	2008/09 16-18 E2E Starts - latest to January 2009
Derby City	225
Derbyshire	590
Leicester City	124
Leicestershire	127
Lincolnshire	370
Northamptonshire	341
Nottingham City	202
Nottinghamshire	326
Rutland	4
East Midlands total	2309

Source: ILR - DASH 0809-0809 - E02 - Learner.xls - NB: data includes provision contracted outside of the region

- 43 More detailed information on the latest picture will be available in series two of these reports.

September Guarantee

- 44 The final 2008/09 September Guarantee national dataset shows that the East Midlands is just 0.8% behind the national average for the Year 11 September Guarantee, placing us sixth out of nine regions. 93.4% of 16 year olds had been offered a place in post-16 education or training. This marks a 6.4% improvement on the regional position in 2007 (87% of learners with an offer).

Table 17 - September Guarantee 2008/09

	Y11 Guarantee				17 year old Guarantee			
	Offer made	Not ready for learning	No offer made	Not recorded	Offer made	Not ready for learning	No offer made	Not recorded
England	94.2%	2.9%	2.7%	0.2%	79.7%	9.6%	7.2%	3.4%
East Midlands	93.4%	5.1%	1.5%	0.0%	78.6%	16.8%	4.6%	0.0%
Derby City	93.0%	5.1%	1.9%	0.0%	78.2%	20.3%	1.5%	0.0%
Derbyshire	89.8%	8.4%	1.8%	0.0%	67.5%	30.7%	1.8%	0.0%
Leicester City	95.3%	3.4%	1.3%	0.0%	87.1%	8.7%	4.2%	0.0%
Leicestershire	95.3%	3.8%	0.8%	0.0%	88.7%	9.4%	1.9%	0.0%
Lincolnshire	94.5%	4.0%	1.5%	0.0%	73.7%	20.7%	5.6%	0.0%
Northamptonshire	92.5%	5.6%	1.9%	0.0%	65.8%	27.8%	6.4%	0.0%
Nottingham City	93.7%	4.1%	2.2%	0.0%	80.0%	13.2%	6.9%	0.0%
Nottinghamshire	93.9%	5.2%	0.9%	0.0%	78.2%	17.7%	4.1%	0.0%
Rutland	95.9%	2.5%	1.7%	0.0%	83.3%	16.7%	0.0%	0.0%

Source: Connexions via Department of Children Schools and Families NCCIS data system

- 45 In September 2008 Lincolnshire achieved offer levels of 94.5% and 73.7% for Year 11 and Year 12 respectively. For the Year 11 guarantee this is 1.1 percentage points and 0.4 percentage points above regional and national levels and 4th out of 9 LA's within East Midlands. For the Year 12 guarantee

this is 4.9 percentage points and 6.0 percentage points below regional and national levels and is 7th out of 9 LA's within East Midlands.

- 46 For Year 11, of those without an offer, 358 persons were recorded as 'Not ready for formal learning at this time' of which 218 were 'Going into employment without training to NVQ Level 2'. 139 were recorded as 'No offer Made', with 54 due to being 'unable to contact' and the remainder shared between 'YP has not applied for learning' and 'Application awaiting outcome'

Travel to learn patterns

Further Education

- 47 78% of Lincolnshire resident 16-18 FE learners were learning at an FE institution within the East Midlands – 74% within Lincolnshire institutions. Nearly 1900 residents access FE provision contracted outside of the region. This is usually due to proximity of institutions to the learner's place of residence, or proximity to parental work. In Table 18 below, the small numbers in distant regions – coded in yellow, are accessing provision from an institution whose home region is as indicated. Usually the institution makes local provision available. Learners do not travel to far flung parts of the country.

Table 18: 16-18 FE learners by LA of residence and region of FE institution, 2007/08

LA of learner residence	Region of FE institution									Total resident 16-18 learners
	East of England	East Midlands	Greater London	North East	North West	South East	South West	West Midlands	Yorkshire & Humberside	
Derby	4	3,305	3		5	3	4	246	5	3,575
Derbyshire	17	7,921	9	2	879	6	6	617	251	9,708
Leicester	6	6,784	8		10	3	1	32	6	6,850
Leicestershire	13	5,868	7		252	6	15	930	7	7,098
Lincolnshire	461	6,527	78	2	13	20	10	20	1,269	8,400
Northamptonshire	252	7,514	19		68	312	11	235	13	8,424
Nottingham	4	5,052	6		1	2		7	10	5,082
Nottinghamshire	30	9,370	16	2	12	8	13	41	210	9,702
Rutland	10	536			2	3	5	3	3	562
Unknown	7	201	1		8	1		6	13	237

Source: 2007/08 ILR F05 returns (FE 0506-0708 Learner Drill down)

- 48 Over 1200 Lincolnshire resident 16-18 FE learners go to the Yorkshire and Humberside region to access their learning. The majority of these learners go to the Grimsby Institute of Further and Higher Education (809 learners).

- 49 There are also high numbers of Lincolnshire resident learners accessing their learning in the East of England region. Over 250 learners go to the College of West Anglia, and a further 178 go to Peterborough Regional College.

Table 19: Lincolnshire and Rutland resident learners learning with East Midlands FE providers 2007/08

		Lincolnshire		Rutland	
		Learner numbers	%	Learner numbers	%
Derby City	Derby College	69	0.8		
Leicester City	Leicester College			13	2.3
	Pre-school Learning Alliance	3	0.04		
	Wyggeston and Queen Elizabeth I College	1	0.01	24	4.3
Leicestershire	Brooksby Melton College	66	0.8	40	7.1
	Leicestershire County Council	1	0.01		
	Loughborough College	20	0.2	3	0.5
Lincolnshire	Boston College	1,602	19.1	2	0.4
	Grantham College	956	11.4	7	1.2
	Lincoln College	2,615	31.1		
	Robert Pattinson School	6	0.1		
	Stamford College	1,018	12.1	228	40.6
Northamptonshire	Northampton College			1	0.2
	Tresham Institute	92	1.1	203	36.1
	Moulton College F.E.C	5	0.1	2	0.4
Nottingham City	New College, Nottingham	16	0.2		
	South Nottingham College	5	0.1		
	Castle College, Nottingham	18	0.2		
Nottinghamshire	North Nottinghamshire College	17	0.2		
	West Nottinghamshire College	10	0.1		
Rutland	Rutland County Council	7	0.1	13	2.3
East Midlands total		6,527	77.7	536	95.4

Source: 2007/08 ILR F05 returns (FE 0506-0708 Learner Drill down)

- 50 Only 330 Lincolnshire resident learners access their FE learning provision outside the County but within the region. This is 5% of Lincolnshire resident learners. The majority go to three colleges: Tresham Institute, Derby College and Brooksby Melton College. This is either for specialist provision, as in the case of Brooksby Melton or proximity for some learners as in the case of Tresham.
- 51 There are other small out flows of learners to other Local Authority areas in the region.

Schools Sixth Forms

52 This section provides travel to learn patterns of School Sixth Form Learners living in Lincolnshire LA. The data has been extracted from the 2008/09 Schools Sixth Form Census.

Table 20: Schools Sixth Form Learners Travel to Learn patterns, 2008/09

	Lincolnshire LA		Rutland LA	
	Number	%	Number	%
Number of learners resident in LA	6607	100.0	62	100.0
Number of learners travelling to learn in:				
Derby	0	0.0	0	0.0
Derbyshire	0	0.0	0	0.0
Leicester	0	0.0	1	1.6
Leicestershire	2	0.0	10	16.1
Lincolnshire	6530	98.8	13	21.0
Northamptonshire	2	0.0	14	22.6
Nottingham	0	0.0	0	0.0
Nottinghamshire	7	0.1	0	0.0
Outside EM region	66	1.0	24	38.7

Source: Schools Sixth Form Census 2008/09

53 The majority of Schools Sixth Form learners living in Lincolnshire LA attended a Schools Sixth Form in their locality (98.8%). Only 1.1% of learners travelled to Schools Sixth Forms outside of the area, including outside of the region (1.0%), in Nottinghamshire (0.1%) and Northamptonshire (0.03%).

Figure 4: Schools Sixth Form Learners Travel to Learn patterns, 2008/09



Source: Schools Sixth Form Census 2008/09

16-18 Resident Learner Achievement

FE Achievements

Table 21: Aims achieved by learners resident in East Midlands local authorities by level, 2006/07-2007/08

	2006					2007				
	Full Level 2 aims	% of aims at Full Level 2	Full Level 3 aims	% of aims at Full Level 3	Total aims	Full Level 2 aims	% of aims at Full Level 2	Full Level 3 aims	% of aims at Full Level 3	Total aims
Leicestershire	1,014	13.6%	600	8.1%	7,445	1,282	14.6%	973	11.1%	8,804
Leicester City	379	3.4%	120	1.1%	11,263	781	5.5%	403	2.8%	14,153
Northamptonshire	1,220	12.7%	875	9.1%	9,633	1,373	12.7%	1,055	9.8%	10,781
Derbyshire	1,643	11.0%	1,205	8.1%	14,956	1,653	10.6%	1,350	8.7%	15,566
Derby City	465	8.2%	322	5.7%	5,659	516	8.8%	330	5.7%	5,838
Lincolnshire	1,428	11.6%	960	7.8%	12,327	1,510	11.1%	1,177	8.7%	13,583
Rutland	48	4.8%	45	4.5%	1,006	66	5.1%	66	5.1%	1,303
Nottinghamshire	1,377	9.6%	993	6.9%	14,363	1,661	10.1%	1,190	7.2%	16,484
Nottingham City	602	7.3%	310	3.8%	8,260	634	7.0%	429	4.8%	9,014
East Midlands	8176	9.6%	5,430	6.4%	84,912	9,476	9.9%	6,973	7.3%	95,526

Source: 2007/08 ILR F05 returns (FE 0506-0708 Success rates Drill down)

- 54 Table 21 shows the proportions of curriculum study at different levels taken by Lincolnshire residents. The count is by learning aim. An individual may be studying a range of learning aims at more than one level. So these figures do not equate to learners, but to enrolments at a particular level on a particular course. The count also only relates to those achieving at **Full** Level 2 or 3. There will be a large number of enrolments on courses that are at Level 2 and 3 but where the total learning aims studied do not amount to a **Full** Level 2 or 3. This explains the relatively low proportions of achievements.

Apprenticeships Framework completions

- 55 Table 22 below shows the number of full Apprenticeship Frameworks achieved by Lincolnshire learner residents. In LSC terms, an Apprenticeship is only achieved if the learner leaves with the full framework completed, including all the key skills and technical certificates in that particular framework. Several apprentices achieve only an NVQ, because their employer often does not see the benefit in the learner taking the other elements of the programme. Those learners are not included in the table below.

Table 22: 16-18 Apprenticeship Framework Completions by Achievement and Programme Level, 2006/07 – 2007/08

Year	Programme Level	Lincolnshire	East Midlands
2006/07	Apprenticeship	722	4,777
	Advanced Apprenticeship	247	1,520
	Total	969	6,297
2007/08	Apprenticeship	627	4,443
	Advanced Apprenticeship	239	1,483
	Total	866	5,926
2006/07 - 2007/08 % change	Apprenticeship	-13.2	-7.0
	Advanced Apprenticeship	-3.2	-2.4
	Total	-10.6	-5.9

Source: ILR WBL AND E2E DRILL DOWNS 2006/07 and 2007/08 (July 2007 and July 2008)
Completions data

- 56 There has been a reduction in the number of Apprenticeship Frameworks achieved by Lincolnshire resident learners in 2007/08 compared to 2006/07 (-10.6%). This is unsurprising considering the fall in the number of learners participating. There was a considerable difference between Levels 2 and 3. Thirteen percent fewer young people achieved a full framework in Apprenticeships (Level 2) in 2007/08 than in 2006/07, whereas in Advanced Apprenticeships (Level 3) the reduction was 3%.
- 57 Overall Lincolnshire does not compare well with the region in Apprenticeships. Where Lincolnshire saw an overall reduction of 11%, this was only 6% in the region. The reduction in Level 2 apprenticeships was almost twice that of the region. Whilst some of this can be accounted for by a smaller cohort in 2006/07 leading to a smaller potential number of achievements in 2007/08, this is not the full picture and this is an aspect to consider in terms of need for progress.

School Sixth Forms

- 58 Table 23 below indicates, there has been a rise in the average point score of those learners achieving A Level grades in Lincolnshire between 2002 and 2006. However, the increase does not compare favourably with either that in the region (30) or nationally (35). This is an aspect to consider in terms of need for progress.

Table 24: Average A-Level point score for candidates and entry by East Midlands local authority

	Per candidate			Per Entry		
	2002	2006	Difference	2002	2006	Difference
Derby City	237	256.1(r)	19.1	73	77.2(r)	4.2
Derbyshire	265.2	281.8(r)	16.6	75.3	76.9(r)	1.6
Leicester City	211.7	243.4(r)	31.7	67.9	72.8(r)	4.9
Leicestershire	247.8	277.4(r)	29.6	72.9	74.1(r)	1.2
Lincolnshire	275.3	304.6(r)	29.3	76.6	79.1(r)	2.5
Northamptonshire	236.4	268.2(r)	31.8	71.8	75.6(r)	3.8
Nottingham City	222.6	296.2(r)	73.6	70.9	77.1(r)	6.2
Nottinghamshire	234.4	260.3(r)	25.9	69.4	71.4(r)	2
Rutland(r)(r)	..
East Midlands	245.5	275.8(r)	30.3	72.6	75.4(r)	2.8
England	254.7	289.5(r)	34.8	76	80.2(r)	4.2

Source: DCSF, (http://www.dcsf.gov.uk/inyourarea/statics/gor_E_12.shtml)

Part 2 - Progress to PSA targets at 19

59 The position of learners at age 19 in terms of the PSA target in any local authority is strongly influenced by the achievements in that local authority's schools at 16. These figures are shown in Table 25 below.

Table 25: GCSE achievements by 15 year old pupils in the East Midlands, 2007/08

	Number of 15 year old pupils			% achieving 5 A*-C grade GCSEs			% achieving 5 A*-C grades, incl. English and Maths		
	Boys	Girls	Total	Boys	Girls	Total	Boys	Girls	Total
Derby	1,540	1,519	3,059	63.2	63.9	63.6	46.8	51.9	49.3
Derbyshire	4,747	4,614	9,361	57.7	68.1	62.8	44.0	52.4	48.2
Leicester	1,835	1,639	3,474	52.2	58.9	55.3	37.1	42.7	39.7
Leicestershire	3,996	3,707	7,703	59.2	69.8	64.3	48.3	55.3	51.7
Lincolnshire	4,297	4,213	8,510	67.1	74.0	70.5	48.9	55.6	52.2
Northamptonshire	4,321	4,088	8,409	55.0	63.7	59.2	41.1	49.4	45.1
Nottingham	1,444	1,436	2,880	54.5	61.9	58.2	31.6	37.0	34.3
Nottinghamshire	4,963	4,717	9,680	55.5	66.5	60.9	38.9	47.4	43.0
Rutland	238	227	465	69.7	71.8	70.8	58.8	58.6	58.7
East Midlands	27,381	26,160	53,541	58.4	67.2	62.7	43.2	50.5	46.8
England	334,579	319,229	653,808	60.4	69.4	64.8	42.9	51.9	47.3

Source: DCSF, (<http://www.dcsf.gov.uk/rsgateway/DB/SFR/s000826/index.shtml>, Table 18a)

- 60 The proportion of young people in the East Midlands achieving 5 GCSEs A*-C (the equivalent of a Level 2) remains below the national average. Achievement by boys remains considerably lower than girls in most areas.
- 61 In Lincolnshire, the percentage of learners achieving 5 or more GCSE A*-C grades was 70.5% in 2007/08. This was well above the regional and England average (62.7% and 64.8% respectively).
- 62 When English and Maths are taken into account, Lincolnshire at 52.2% was also above regional and national averages.

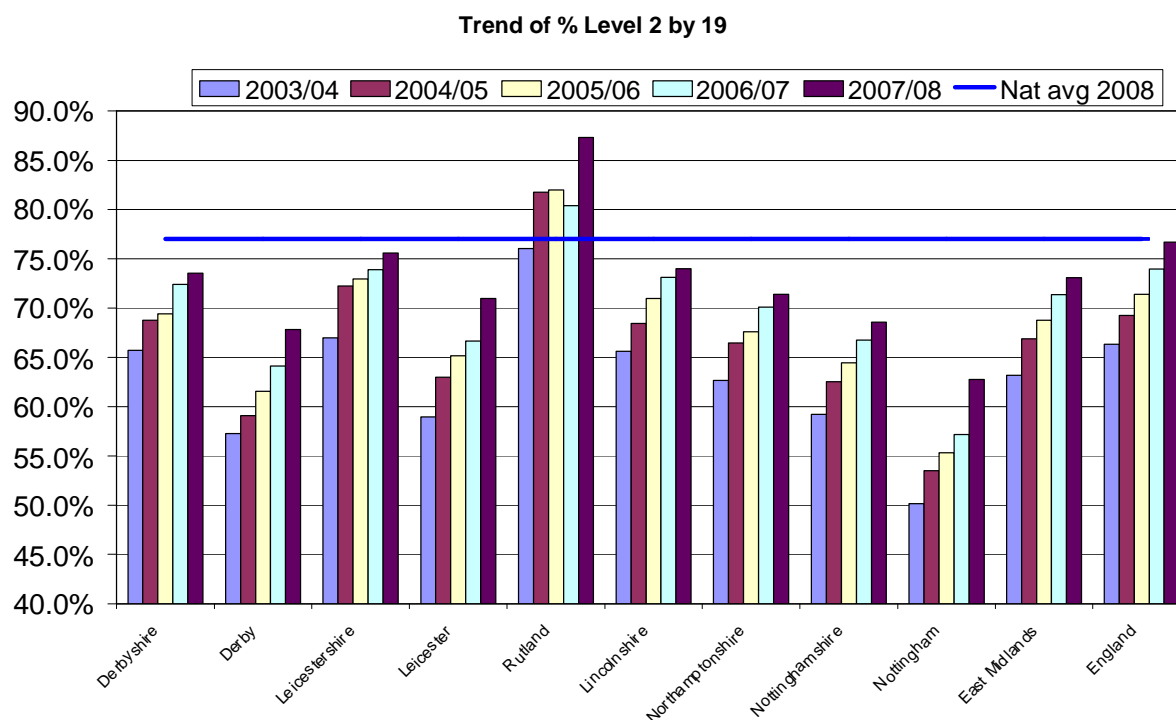
Table 26: Achievement of Level 2 by 19: Lincolnshire. Trend data from 2003/4 to 2008/09

LEA Name	Aged 19 at the end of 2003/04	Aged 19 at the end of 2004/05	Aged 19 at the end of 2005/06	Aged 19 at the end of 2006/07	Aged 19 at the end of 2007/08	Aged 19 at the end of 2008/09	Aged 19 at the end of 2009/10
	by age 19	by age 19	by age 19	by age 19	by age 19	by age 18	by age 17
Derbyshire	65.7%	68.8%	69.4%	72.4%	73.6%	71.7%	65.0%
Derby City	57.3%	59.1%	61.6%	64.1%	67.8%	65.9%	60.3%
Leicestershire	67.0%	72.3%	73.0%	73.9%	75.6%	74.4%	68.4%
Leicester City	58.9%	63.0%	65.2%	66.7%	71.0%	67.6%	63.1%
Rutland	76.0%	81.8%	82.0%	80.4%	87.3%	83.4%	81.3%
Lincolnshire	65.6%	68.4%	71.0%	73.1%	74.0%	73.8%	68.5%
Northamptonshire	62.7%	66.5%	67.6%	70.1%	71.4%	70.8%	62.9%
Nottinghamshire	59.2%	62.5%	64.4%	66.8%	68.6%	66.4%	60.2%
Nottingham City	50.2%	53.5%	55.3%	57.2%	62.8%	59.9%	55.0%
East Midlands	63.2%	66.9%	68.8%	71.4%	73.1%	70.7%	64.3%
England	66.3%	69.2%	71.4%	74.0%	76.7%	74.8%	67.9%

Source: DCSF Website: Level2andlevel3attainmentin each LEAApr2009.xls

63 There has been a considerable rise in the proportion of young people who gain a Full Level 2 by 19 over the last five years in Lincolnshire. The proportion has risen by 8.4 percentage points. This is slightly below regional averages (9.9 percentage points) but considerably below the national change of 10.4 percentage points.

Figure 5: Trends in Level 2 by 19 by Local Authority learners



Source: DCSF Website: Level2andlevel3attainmentin each LEAApr2009.xls

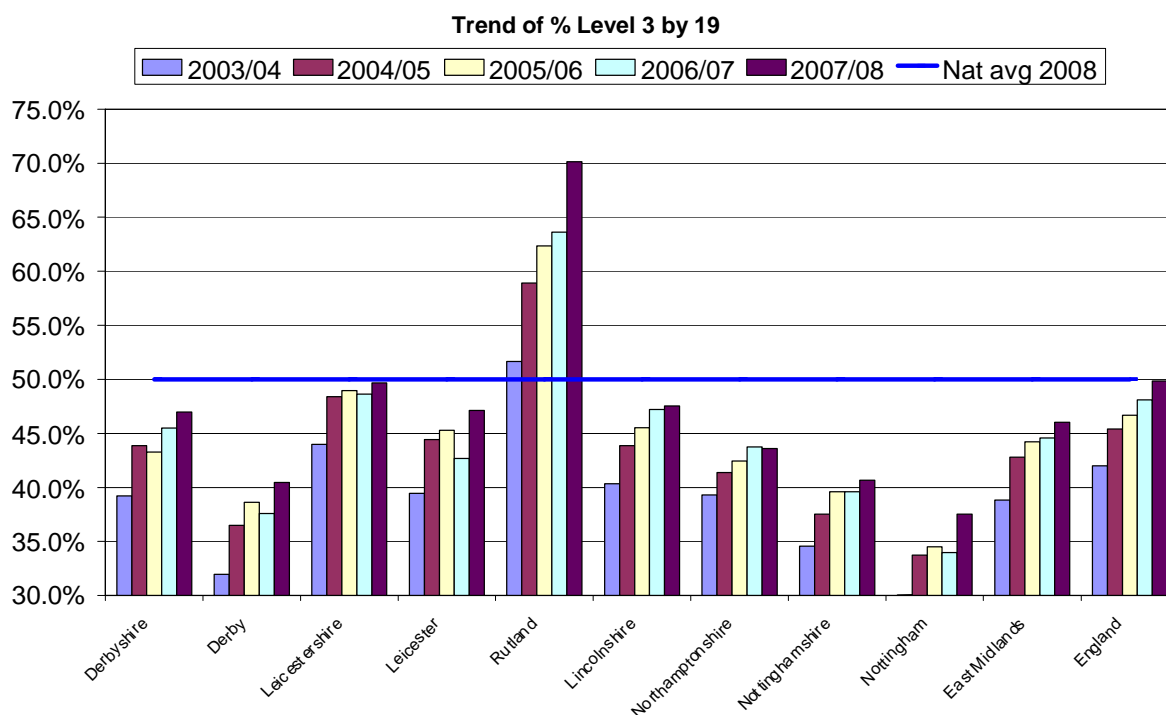
Table 27: Achievement of Level 3 by 19: Lincolnshire. Trend data from 2003/4 to 2008/09

Region	19 in 2003/04	29 in 2004/05	19 in 2005/06	19 in 2006/07	19 in 2007/08	Aged 19 in 2008/09	Aged 19 in 2009/10
	by age 19	by age 19	by age 19	by age 19	by age 19	by age 18	by age 17
Derbyshire	39.2%	43.9%	43.3%	45.5%	47.0%	41.7%	16.8%
Derby	31.9%	36.5%	38.6%	37.6%	40.5%	35.2%	7.5%
Leicestershire	44.0%	48.4%	49.0%	48.6%	49.7%	45.7%	24.0%
Leicester	39.5%	44.4%	45.3%	42.7%	47.1%	37.9%	18.5%
Rutland	51.7%	58.9%	62.4%	63.6%	70.1%	61.2%	13.1%
Lincolnshire	40.3%	43.9%	45.5%	47.2%	47.6%	42.7%	15.8%
Northamptonshire	39.3%	41.4%	42.4%	43.8%	43.6%	40.3%	14.5%
Nottinghamshire	34.6%	37.5%	39.6%	39.6%	40.7%	35.6%	16.1%
Nottingham	30.0%	33.7%	34.5%	34.0%	37.5%	32.7%	12.1%
East Midlands	38.8%	42.8%	44.2%	44.6%	46.0%	40.6%	16.3%
England	42.0%	45.4%	46.7%	48.1%	49.8%	43.4%	16.9%

Source: DCSF Website: Level2andlevel3attainmentin each LEAApr2009.xls

64 There is a similar picture with Level 3 at 19. There has been a 7.6 percentage point rise in the proportion of young people who gain a Full Level 3 by 19 over the last five years in the local authority area. This is a slightly better rate of improvement than regional averages (7.2 percentage points) and below the national change of 7.8 percentage points. However, as **Figure 6** below shows, the County is still below the national average.

Figure 6: Trends in Level 3 by 19 by Local Authority learners



Source: DCSF Website: Level2andlevel3attainmentin each LEAApr2009.xls

Part 3 - Provision within Lincolnshire

65 This section shows how post-16 providers (excluding those for Apprenticeships) are delivering against their contracts and the quality of their delivery. It is important information for planning the number of commissioned places in 2010/1011, since learning places will need to be planned for all those who choose to learn within the County's institutions.

Further Education Providers

FE Participation

66 15% of the region's Further Education learners study within Lincolnshire in 2008/09. Of these, Lincoln College was responsible, in 2008/09 for 44% of the provision in FE within the County.

Table 28: Number of 16-18 FE learners by Level for each provider in Lincolnshire and Rutland LSC, 2006/07-2008/09

Provider Name	2006/07					2007/08				
	Full Level 2	%	Full Level 3	%	Total Learners	Full Level 2	%	Full Level 3	%	Total Learners
Boston College	462	26.7	673	38.8	1,733	427	25.1	586	34.4	1,703
Grantham College	271	24	468	41.5	1,128	258	22.1	501	43	1,166
Lincoln College	670	24.7	1,020	37.6	2,710	886	26.4	1,196	35.6	3,356
Robert Pattinson School	1	14.3	0	0	7	2	28.6	0	0	7
Stamford College	397	27.3	664	45.7	1,454	410	23.7	736	42.5	1,733
Lincolnshire LA Total	1,802	25.6	2,827	40.1	7,048	1,983	24.8	3,022	37.8	7,965
East Midlands Total	12,662	23.7	18,559	34.7	53,446	12,724	22.6	20,188	35.9	56,249

Provider Name	2008/09				
	Full Level 2	%	Full Level 3	%	Total Learners
Boston College	419	24.9	601	35.6	1,686
Grantham College	259	20.6	548	43.7	1,255
Lincoln College	942	25	1,350	35.8	3,769
New College Stamford	451	24	780	41.6	1,876
Robert Pattinson School	-	-	-	-	-
Lincolnshire LA Total	2,071	24.1	3,279	38.1	8,596
East Midlands Total	12,951	23.1	21,755	38.9	55,980

Sources: ILR - FE Learners Full Level 2 and Full Level 3 Drill Down 2005-06 - 2007/08 and 08/09 data - Dashboard 0809-0809 - LR FE - Learner.xls

NB: Total Learners also includes learners who are not undertaking L2/L3 qualifications

- 67 Across the FE providers, the proportional split between the level of qualifications that learners are undertaking varies both between Providers and from year to year from 2006/07 – 2008/09.
- 68 Compared to 2006/07, there has been an increase in the proportion of learners undertaking Full Level 2's and 3's in 2007/08 (10% and 7% respectively). Between 2007/08 and 2008/09 (year to date figures) there was a 4.4% increase in Full Level 2 learner numbers and an 8.5% increase in Full Level 3 numbers. Both of these were above the regional average for the same period (1.8% and 7.8% respectively).

Table 29: Number of 16-18 FE learners by provider in Lincolnshire with a learning difficulty and/or disability (LLDD), 2007/08

LA	Provider	LLDD	
Lincolnshire	Learner numbers	No.	% of LLDD with each Provider
	Boston College	340	20.0
	Grantham College	90	7.7
	Lincoln College	320	9.5
	Robert Pattinson School	1	14.3
	Stamford College	246	14.2
Lincolnshire total – Overall Providers	997	12.5	

Source: 2007/08 ILR F05 returns (FE 0506-0708 Learner Drill down)

- 69 Boston College had the highest proportion of learners with learning difficulties and/or disabilities in 2007/08 compared to other FE providers in Lincolnshire local authority Area.

Table 30: Numbers of East Midlands 16-18 FE learners by their district of residence by provider in Lincolnshire, 2007/08

	Derby City	Derbyshire	Leicester City	Leicestershire	Lincolnshire	Northamptonshire	Nottingham City	Nottinghamshire	Rutland	blank	Total East Midlands learners	Learners from outside of East Midlands	Full Total of learners
Boston College	0	2	0	0	1,602	0	0	0	2	2	1,608	95	1,703
Grantham College	2	1	1	79	956	0	5	68	7	1	1,120	46	1,166
Lincoln College	0	16	0	12	2,604	0	27	645	0	21	3,325	31	3356
Robert Pattinson School	0	0	0	0	6	0	0	0	0	0	6	1	7
Stamford College	0	0	0	17	1,018	53	0	0	228	9	1,325	408	1,733
Totals	2	20	1	107	6197	53	34	719	237	1	7395	581	7965

Source: 2007/08 ILR F05 returns (FE 0506-0708 Learner Drill down)

70 In terms of planning places for learning and learners within the County's providers, whilst by far the greatest proportion (78%) come from within the County itself, on 2007/08 figures, the Local Authority will need to ensure there are places available for learners from Nottinghamshire (9%), from other regions (East of England and Yorkshire and Humberside) and for small numbers of learners from other local authorities, the majority of whom choose to study at Lincoln College, Grantham College or Boston College. It is likely that these choices are made on the basis of curriculum availability as well as travel patterns. More detail on this issue will be provided in the curriculum update of these reports.

Table 31: Percentage of East Midlands 16-18 FE learners by their district of residence by provider in Lincolnshire, 2007/08

	Derby City	Derbyshire	Leicester City	Leicestershire	Lincolnshire	Northamptonshire	Nottingham City	Nottinghamshire	Rutland	blank	Total East Midlands learners	Learners from outside of East Midlands	Full Total of learners
Boston College		0.1			94.1				0.1		94.4	5.6	100
Grantham College	0.2	0.1	0.1	6.8	82		0.4	5.8	0.6	0.1	96.1	3.9	100
Lincoln College		0.5		0.4	77.6		0.8	19.2		0.6	99.1	0.9	100
Robert Pattinson School					85.7						85.7	14.3	100
Stamford College				1	58.7	3.1			13.2		76.5	23.5	100
Lincolnshire provider total	0.02	0.3	0.01	1.3	77.6	0.7	0.4	9.0	3	0.01	92.7	7.3	100

Source: 2007/08 ILR F05 returns (FE 0506-0708 Learner Drill down)

Table 32: Numbers of 16-18 FE learners by region of residence for providers in Lincolnshire 2007/08

	Boston College		Grantham College		Lincoln College		Robert Pattinson School		Stamford College		Lincolnshire providers total	
	No.	%	No.	%	No.	%	No.	%	No.	%	No.	%
East of England	13	0.8	5	0.4	1	0.03		0	398	23.0	417	5.3
East Midlands	1,608	94.4	1,120	96.1	3,325	99.1	6	85.7	1,325	76.5	7384	93.6
Greater London	2	0.1	4	0.3							6	0.1
North East			2	0.2	1	0.03					3	0.03
North West			3	0.3	1	0.03			4	0.2	8	0.1
South East	9	0.5	6	0.5	1	0.03			1	0.1	17	0.3
South West	2	0.1	4	0.3							6	0.1
West Midlands	1	0.1	5	0.4	1	0.03					7	0.1
Yorkshire & Humberside	2	0.1	11	0.9	14	0.4			1	0.1	28	0.4
Unknown	66	3.9	6	0.5	12	0.4	1	14.3	4	0.2	89	1.1
Total Learners	1,703	100.0	1,166	100.0	3,356	100.0	7	100	1,733	100.0	7,965	100.0

Source: 2007/08 ILR F05 returns (FE 0506-0708 Learner Drill down)

FE Achievements

71 Over the last two years, all the FE providers in Lincolnshire saw their success rates rise overall. For Boston College however, the rates at both Level 2 and Level 3 fell between the two years and both Boston and Lincoln Colleges were below regional averages at Level 2 in 2007/08. Boston College is also below the regional average at Level 3. This is a matter for discussion.

Table 33: Success rates of Lincolnshire FE providers 2006/07

	2006/07					
	Full Level 2		Full Level 3		Total	
	Achievements	Success rate	Achievements	Success rate	Achievements	Success rate
Boston College	302	74.9%	207	73.7%	3,014	71.7%
Grantham College	202	61.8%	168	70.9%	2,076	76.1%
Lincoln College	464	68.2%	319	61.2%	3,549	66.2%
Robert Pattinson School					4	57.1%
Stamford College	306	76.7%	207	72.1%	2,139	76.7%
East Midlands average	7,587	69.6%	4,905	64.3%	79,184	75.8%

Source: ILR - EM-FE Success Rates-Detail- 0506-0708.xls

Table 34: Success rates of Lincolnshire FE providers 2007/08.

	2007/08					
	Full Level 2		Full Level 3		Total	
	Achievements	Success rate	Achievements	Success rate	Achievements	Success rate
Boston College	308	72.6%	232	71.8%	3,037	75.1%
Grantham College	279	79.7%	168	74.3%	1,930	81.4%
Lincoln College	620	73.5%	516	74.7%	4,490	72.6%
Robert Pattinson School	261	79.6%	256	76.2%	3,649	77.8%
Stamford College						
East Midlands average	9,050	74.0%	6,638	74.0%	90,116	78.9%

Source: ILR: EM-FE Success Rates-Detail- 0506-0708.xls

FE Funding

- 72 16-18 funding in FE for Lincolnshire has increased over the last three years in the order of 15% (2005-06 – 2007-08) on average although this is inflated by changes to Robert Pattinson School where the numbers are small. Boston College has seen a decrease between 2007/08 and 2006/07. Some of the increase for each provider is determined by the increasing proportion of learners studying full time rather than part time.
- 73 In 2008/09, the LSC introduced its new Demand Led Funding methodology and this was applied to the allocations process for funding FE provision in that year. For this reason, direct comparisons are not possible between 2007/08 funding levels and those in 2008/09. Further information about the Demand Led Funding methodology is available via the LSC web site (<http://www.lsc.gov.uk/providers/funding-policy/demand-led-funding/>).

Table 35: 16-18 FE funding, 2006/07 – 2008/09

Provider	2006/07		2007/08		2008/09
	£	% change from previous year	£	% change from previous year	£
Boston College	£6,966,805	12.3%	£6,790,273	-2.5%	£6,455,315
Grantham College	£4,389,741	2.0%	£4,942,610	12.6%	£4,364,533
Lincoln College	£11,326,182	16.0%	£14,005,730	23.7%	£13,453,842
Robert Pattinson School	£4,738	23.7%	£6,363	34.3%	£2,236
Stamford College	£6,091,783	12.3%	£8,000,745	31.3%	£7,917,857
Lincolnshire total	£28,779,249	12.0%	£33,745,721	17.3%	£32,193,783

Source: 2007/08 ILR F05 returns (FE 0506-0708 Learner Drill down), 2008/09 Funding Allocation information from 'Report Tables.xls'

School Sixth Forms

S6F Participation

Table 36 shows Lincolnshire Schools Sixth Form participation from 2005/06 to 2008/09. Trends are mixed across individual schools.

Table 36: Numbers of Year 12-14 students in Lincolnshire school Sixth Forms, 2005/06-2008/09

	2005/06	2006/07	2007/08	2008/09
The Robert Manning Technology College	174	147	145	143
Kesteven and Grantham Girls' School	260	254	252	266
Kesteven and Sleaford High School	211	210	200	205
The Deepings School	190	200	220	246
Grantham The Walton Girls' High School	0	0	0	16
Boston High School	163	184	216	210
Spalding High School	186	206	235	213
George Farmer Technology and Language College	0	0	8	94
Cordeaux School	48	74	72	89
The Queen Elizabeth's High School, Gainsborough	278	272	274	291
St Clements College	126	103	115	131
Bourne Grammar School	249	234	253	266
Market Rasen De Aston School	227	217	168	177
Spalding Grammar School	309	313	308	300
The Skegness Grammar School	199	198	209	183
Queen Elizabeth's Grammar School	123	125	126	130
The King's School, Grantham	242	241	251	246
Carre's Grammar School	178	188	169	167
The St George's College of Technology	265	292	297	378
The King Edward VI Grammar School, Louth	230	232	213	198
Caistor Grammar School	154	155	168	164
Yarborough School	157	177	150	142
Lincoln Christ's Hospital School	131	160	228	313
Queen Elizabeth's Grammar School, Horncastle	220	225	229	272
North Kesteven School	218	238	248	258
Robert Pattinson School	203	175	217	200
William Farr CofE Comprehensive School	239	237	260	277
The Glead Girls' Technology College	0	0	0	51
Monks' Dyke Technology College	187	185	158	200
Branston Community College	175	176	156	166
St Peter and St Paul, Lincoln's Catholic High School, A Science College	73	98	102	88
The Giles School	106	136	157	131
The Boston Grammar School	167	157	172	197

Source: School Sixth Form Census Data

S6F Achievement

51 Overall the County's average A Level point score per student has increased over the last three years in a steady fashion, and are above the national figures.

Table 37: 'A' Level Achievement in School Sixth Forms: Lincolnshire

	Average point score per student			Average point score per examination entry		
	2006	2007	2008	2006	2007	2008
Local Authority Average	758.3	761.5	775.6	204.9	206.2	208
LSC Average	758.3	761.5	775.6	204.9	206.2	208
England Average	721.5	731.2	740	206.2	207.5	209.4
Boston College	623.8	606.7	600.2	201.4	196	204.1
The Boston Grammar School	898.9	914.1	893.4	202.9	206.9	198.9
Boston High School	775.9	796.2	757.3	195.9	197.9	195.4
Bourne Grammar School	1014.5	1024.1	1037.6	223.1	227.8	225.1
Branston Community College	707.6	731.5	768.7	193.9	199.7	191.3
Caistor Grammar School	1021.5	1055.1	1077.7	231.8	234.5	234.5
Carre's Grammar School	780	785.7	868.2	204.4	205.1	210.1
The City of Lincoln Community College (closed)	405.7	338.5	508.8	158.1	137.8	175.3
Cordeaux School	496.4	587.7	485.2	187.8	182.1	169.3
The Deepings School	854.2	806.3	832.7	195.5	187.6	192.2
George Farmer Technology and Language College	N/A	N/A	-	N/A	N/A	-
The Giles School	693.3	580	690.5	210.7	176.9	213.8
The Gleed Girls' Technology College	N/A	N/A	-	N/A	N/A	-
Grantham College	599.6	635.8	646	192.8	203.9	201.7
Joseph Ruston Technology College (closed)	<	<	<	<	<	<
Kesteven and Grantham Girls' School	924.5	904.9	983.2	214.7	212	224.5
Kesteven and Sleaford High School	890	980.7	913.1	209.1	224.8	211.2
The King Edward VI Grammar School, Louth	749.3	755.6	792.4	213.8	213.1	223.4
The King's School, Grantham	897.5	966.9	964.4	215.5	223.4	227.2
Lincoln Christ's Hospital School	791.8	759.4	728.9	198.4	192.1	198.2
Lincoln College	582.6	625.2	657.2	198.2	201.4	207.7
Lincoln Minster School	720.8	763.3	697.5	218.6	231.7	226.6
Market Rasen De Aston School	624.1	672.3	715.8	197.3	208	205.7
Monks' Dyke Technology College	555.6	541.1	525.2	193.7	193.9	183.8
New College Stamford	573.7	589.9	608.8	192.7	189.3	196.1
North Kesteven School	688.8	716.9	726.8	186.9	203.1	193.9
Priory Academy LSST	Not Applicable. School opened after January 2008					
Priory City of Lincoln Academy	Not Applicable. School opened after January 2008					
The Priory LSST (closed)	919.7	911.5	914.8	211.3	214.3	215.5
Priory Witham Academy	Not Applicable. School opened after January 2008					
Queen Elizabeth's Grammar School	926.6	828	873.3	228.9	218.6	220.9
Queen Elizabeth's Grammar School, Horncastle	893.3	958.8	913.4	217.4	222.1	216
The Queen Elizabeth's High School,	985.1	1016.7	972	229.5	235.2	228.9

Gainsborough						
The Robert Manning Technology College	782.8	771.1	783.9	190.5	186.7	180.5
Robert Pattinson School	688.8	716.9	726.8	186.9	203.1	193.9
St Clements College	764.1	600.3	752.9	225.1	209.7	225
The St George's College of Technology	599.7	610.9	579.1	169.3	169.6	164.6
St Peter and St Paul, Lincoln's Catholic High School, A Science College	402.6	541.8	592.8	154.8	188.1	188.1
The Skegness Grammar School	951.7	931.8	908.4	212.4	210.4	206.4
Spalding Grammar School	839.4	727.8	809.8	215.9	210.1	214.9
Spalding High School	1001.5	972.1	1015.6	223.7	218.3	225
Stamford High School	866.1	825.7	837	239.6	238.7	241.3
Stamford School	824.3	808.7	852	227.4	233.6	238.8
William Farr CofE Comprehensive School	788.8	888.7	923.6	193.2	206	212.1
Yarborough School	757.5	731.3	761.3	189.4	186.2	199.7
North Hykeham Joint Sixth Form	688.8	716.9	726.8	186.9	203.1	193.9
Sleaford Joint Sixth Form	759.1	795.2	774.3	195.3	201.9	195.3

Source: DCSF, (<http://www.dcsf.gov.uk/performance/tables/>) < Results withheld to protect confidentiality.

S6F Funding

74 Only 2008/09 funding information is available at this time. More detail, including 2009/10 funding allocations figures will be available in the next phase of the reports.

Table 38: 2008/09 School Sixth Form funding in Lincolnshire

School Sixth Form	2008/09 Total funding allocation
The Robert Manning Technology College	£736,475
Kesteven and Grantham Girls School	£1,230,800
Kesteven and Sleaford High School	£978,628
The Deepings School	£1,171,097
Grantham the Walton Girls High School	£161,084
Boston High School	£1,203,082
Spalding High School	£1,078,883
George Farmer Technology and Language College	£414,216
Cordeaux School	£454,386
The Queen Elizabeth's High School, Gainsborough	£1,379,807
St Clements College	£670,370
Bourne Grammar School	£1,196,773
Market Rasen De Aston School	£822,288
Spalding Grammar School	£1,406,141
The Skegness Grammar School	£977,326
Queen Elizabeth's Grammar School	£627,412
The King's School, Grantham	£1,199,095
Carre's Grammar School	£867,703
The St George's College of Technology	£1,595,927
The King Edward VI Grammar School, Louth	£1,044,314
Caistor Grammar School	£826,514
Yarborough Grammar School	£748,884
Lincoln Christ's Hospital School	£1,368,593
Queen Elizabeth's Grammar School, Horncastle	£1,206,150
North Kesteven School	£1,305,139
Robert Pattinson School	£1,107,069
William Farr COFE Comprehensive school	£1,283,457
The Glead Girls Technology College	£644,336
Monks' Dyke Technology College	£815,486
Branston Community College	£858,940
St Peter and ST Paul, Lincoln's Catholic High School, a Science College	£577,318
The Giles School	£772,282
The Boston Grammar School	£804,697
Lincolnshire Total	£31,534,674

Source: 2008/09 LSC School Sixth Form funding allocations

Apprenticeships

Apprenticeship Participation

75 This section provides information on the number of learners participating on Apprenticeships within the Lincolnshire and Rutland area and the Providers funded to deliver that learning. The data presents detailed information about those Providers that are funded by Lincolnshire and Rutland LSC. However, some of these Providers may not *deliver* the learning in the Lincolnshire and Rutland area and due to the complexities in how this data is constructed it is not possible at this stage to provide a breakdown of the delivery location of each Provider for individual learners.

Table 39: Number of 16-18 learners undertaking Apprenticeships with Providers funded by Lincolnshire and Rutland LSC, 2007/08

Provider	2007/08				
	Apprenticeship		Advanced Apprenticeship		Total
	No.	%	No.	%	
A4e Ltd	-	-	-	-	-
Boston And South Holland Information Technology Centre	30	3	9	2	40
Boston College	142	14	76	16.6	218
Children's Links	15	1.5	3	0.6	18
Constant Browning Edmonds Limited	5	0.5	2	0.5	7
East Lindsey Information Technology Centre	42	4.2	17	3.6	59
Grantham College	148	14.6	22	4.7	170
Grimsby Institute Of Further And Higher Education	7	0.6	2	0.5	9
In Training (CBE) Ltd	1	0.1	0	0.1	2
Intec Business Colleges Plc	8	0.8	8	1.7	16
Isis Training & Recruitment Limited	65	6.4	23	4.9	88
JHP Group Limited	3	0.3	0	0	3
LAGAT Limited	42	4.1	6	1.3	47
Lincoln City Council	14	1.4	10	2.2	24
Lincoln Academy Ltd	-	-			
Lincoln College	300	29.5	167	36.2	466
Mouchel Business Services Limited	60	5.9	20	4.4	80
New College Stamford	1	0.1	0	0	1
NLT Training Services Limited	1	0.1	2	0.5	3
Protocol Skills Limited	56	5.5	8	1.7	63
Siemens Industrial Turbomachinery Limited	0	0	67	14.5	67
Skegness College Of Vocational Training Limited	13	1.3	5	1.1	18
University Of Lincoln	30	2.9	6	1.3	36
VT Training Plc	34	3.4	8	1.8	43
Grand Total	1016	100	460	100	1476

Table 40: Number of 16-18 learners undertaking Apprenticeships with Providers funded by Lincolnshire and Rutland LSC, 2008/09

Provider	2008/09				Total
	Apprenticeship		Advanced Apprenticeship		
	No.	%	No.	%	
A4e Ltd	1	0.1	0	0	1
Boston And South Holland Information Technology Centre		0		0	
Boston College	138	13.7	86	20.4	224
Children's Links	18	1.8	9	2.1	27
Constant Browning Edmonds Limited		0		0	
East Lindsey Information Technology Centre	45	4.4	15	3.7	60
Grantham College	126	12.6	29	6.9	155
Grimsby Institute Of Further And Higher Education	11	1.1	3	0.7	14
In Training (CBE) Ltd	6	0.6	1	0.3	7
Intec Business Colleges Plc	10	1	2	0.4	12
Isis Training & Recruitment Limited	8	0.7	2	0.4	9
JHP Group Limited	33	3.2	6	1.3	38
LAGAT Limited	26	2.6	4	1	30
Lincoln City Council	-	-	-	-	-
Lincoln Academy Ltd	56	5.5	9	2.2	65
Lincoln College	377	37.6	174	41.3	551
Mouchel Business Services Limited	29	2.9	9	2.2	38
New College Stamford	30	3	4	1	34
NLT Training Services Limited	4	0.4	7	1.6	11
Protocol Skills Limited	49	4.8	8	1.9	56
Siemens Industrial Turbomachinery Limited	0	0	43	10.1	43
Skegness College Of Vocational Training Limited	9	0.9	3	0.7	12
University Of Lincoln	31	3	7	1.6	37
VT Training Plc		0		0	
Grand Total	1004	100	421	100	1425

NB: The data shows an average of learners undertaking an Apprenticeship in a given month over a 12 month period. Source: ILR - WBL and E2E 2007/08 Drill Downs, 'In Learning' Data ILR Employer Responsive Drill Downs 2008/09, Period 8 (March 2009),

76 In 2007/08, Lincoln College, Boston College and Grantham College were some of the main providers of Apprenticeships and Advanced Apprenticeships funded by Lincolnshire and Rutland LSC. The number of apprenticeships has fallen since March 2008, indicating the difficult economic conditions prevailing currently.

Apprenticeships: Participation by Learners with Learning Difficulties and/or Disabilities

77 Table 41 below provides a breakdown of Providers funded by Lincolnshire and Rutland LSC in 2007/08 that had learners with learning difficulties and/or

disabilities undertaking Apprenticeships. The largest providers (those with >5% of their learners having LDD) are shaded in yellow. In 2007/08 some 4.5% of Apprentices were identified as having Learning Difficulties/Disabilities.

Table 41: Number of 16-18 Apprenticeship learners with a learning difficulty and/or disability (LLDD), by Providers funded by Lincolnshire and Rutland LSC, 2007/08

Provider	2007/08 - LLLD	
	No.	%
Boston And South Holland Information Technology Centre	6	14.3
Boston College	3	6.3
Children's Links	0	1.0
Constant Browning Edmonds Limited	2	5.1
East Lindsey Information Technology Centre	2	3.6
Grantham College	7	16.6
Grimsby Institute Of Further And Higher Education	0	0.0
In Training (CBE) Ltd	1	2.6
Intec Business Colleges Plc	1	3.4
Isis Training & Recruitment Limited	1	2.6
JHP Group Limited	0	0.0
LAGAT Limited	1	2.0
Lincoln City Council	0	0.0
Lincoln College	7	15.8
Mouchel Business Services Limited	0	0.0
New College Stamford	0	0.0
NLT Training Services Limited	0	0.0
Protocol Skills Limited	5	11.9
Siemens Industrial Turbomachinery Limited	2	5.7
Skegness College Of Vocational Training Limited	0	0.0
University Of Lincoln	2	5.7
VT Training Plc	1	3.4
Grand Total	42	100.0

NB: The data shows an average of learners undertaking an Apprenticeship in a given month over a 12 month period. Source: ILR - WBL and E2E 2007/08 Drill Downs, 'In Learning' Data

78 Providers with a higher proportion of learners with learning difficulties and/or disabilities were: Lincoln College, Boston and South Holland Information Technology Centre, Grantham College and Protocol Skills Ltd.

Apprenticeship Achievements

79 The table below presents overall 2007/08 success rates for Apprenticeship delivery by Providers funded by Lincolnshire and Rutland LSC. 72% of the Apprenticeship providers who deliver within Lincolnshire and Rutland have overall success rates above the regional average. These are highlighted in yellow in the table below. Notable exceptions are Boston College and Lincoln City Council although in the case of the former this is due to performance in

Apprenticeships. There are a variety of reasons for this, much of which can be attributed to the fact that these figures only reflect the achievement of the full framework. Many learners, with the support of their employer may have chosen only to complete NVQs rather than the full framework

Table 42: 2007/08 Apprenticeship Framework Overall Success Rates, Providers funded by Lincolnshire and Rutland LSC

PROVIDER	Apprenticeships		Advanced Apprenticeships		Overall	
	Frameworks	Overall Success rate	Frameworks	Overall Success rate	Frameworks	Overall Success rate
Boston And South Holland Information Technology Centre	10	83%	6	50%	16	67%
Boston College	72	59%	24	65%	96	60%
Children's Links	6	55%	1	100%	7	58%
Constant Browning Edmonds Limited	8	89%	-	-	8	89%
East Lindsey Information Technology Centre	39	74%	10	77%	49	74%
Grantham College	43	67%	4	100%	47	69%
Intec Business Colleges Plc	4	40%	5	63%	9	50%
Isis Training & Recruitment Limited	48	68%	27	71%	75	69%
LAGAT Limited	36	63%	2	33%	38	60%
Lincoln City Council	0	0%	1	33%	1	20%
Lincoln College	115	67%	49	72%	164	68%
Protocol Skills Limited	42	69%	5	83%	47	70%
Skegness College Of Vocational Training Limited	8	80%	4	57%	12	71%
University Of Lincoln	16	76%	1	100%	17	77%
VT Training Plc	25	64%	7	50%	32	60%
Grimsby Institute Of Further And Higher Education	1	100%	-	-	1	100%
Mouchel Business Services Limited	21	68%	10	77%	31	70%
Lincolnshire and Rutland Total	494	66%	156	68%	650	66%
East Midlands Total	3,781	64%	952	66%	4,733	65%

Source: ILR - WBL New Measures of Success Rates Drill Downs 2007/08

80 Lincolnshire and Rutland's overall success rate in 2007/08 was just above the regional average (66% compared to 65%).

Apprenticeships: Funding

81 Only 2008/09 funding information is available at this time. More detail, including 2009/10 funding allocations figures will be available in the next phase of the reports.

Table 43:2008/09 16-18 Apprenticeship funding, Lincolnshire and Rutland LSC

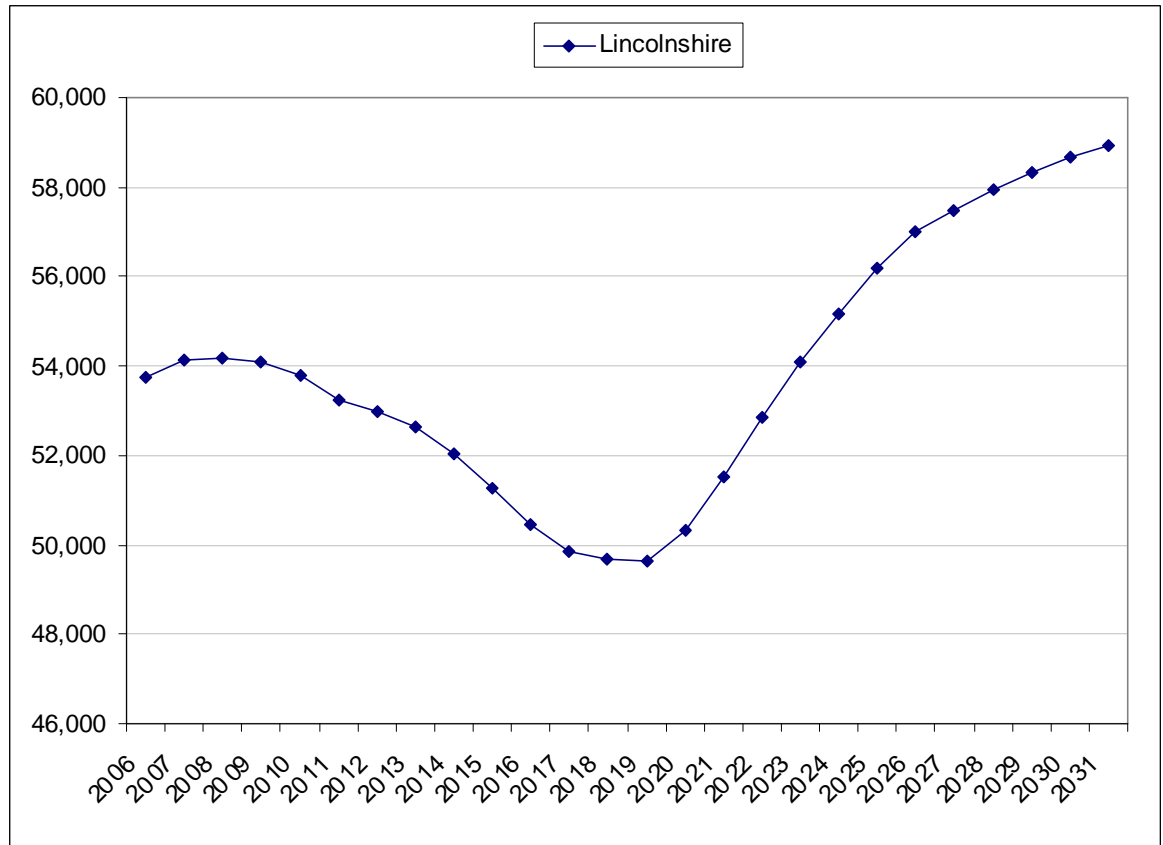
Funding LSC	Provider	Total 2008/09 Allocation (Excl ALS)
Lincolnshire and Rutland	Boston College	£1,064,117.65
	Children's Links	£64,164.91
	East Lindsey Information Technology Centre	£220,785.19
	Grantham College	£773,502.24
	Grimsby Institute Of Further And Higher Education	£122,725.46
	Intec Business Colleges Plc	£72,128.09
	Intraining (CBE) Ltd	£69,769.70
	Isis Training & Recruitment Limited	£434,697.45
	JHP Group Limited	£51,098.93
	LAGAT Limited	£187,874.65
	Lincoln Academy Limited	£434,706.42
	Lincoln College	£1,902,389.90
	Mouchel Business Services Limited	£229,180.94
	New College Stamford	£174,614.80
	NLT Training Services Limited	£53,336.67
	Protocol Skills Limited	£267,679.00
	Siemens Industrial Turbomachinery Limited	£328,892.88
	Skegness College Of Vocational Training Limited	£61,099.24
	University Of Lincoln	£88,749.26
VT Training Plc	£169,131.57	
Lincolnshire and Rutland Total		£6,770,644.95

Source: LSC- Apprenticeships 16-18 Original Profile for 2008/09.xls

Part 4 - Area Context

14-19 Population information

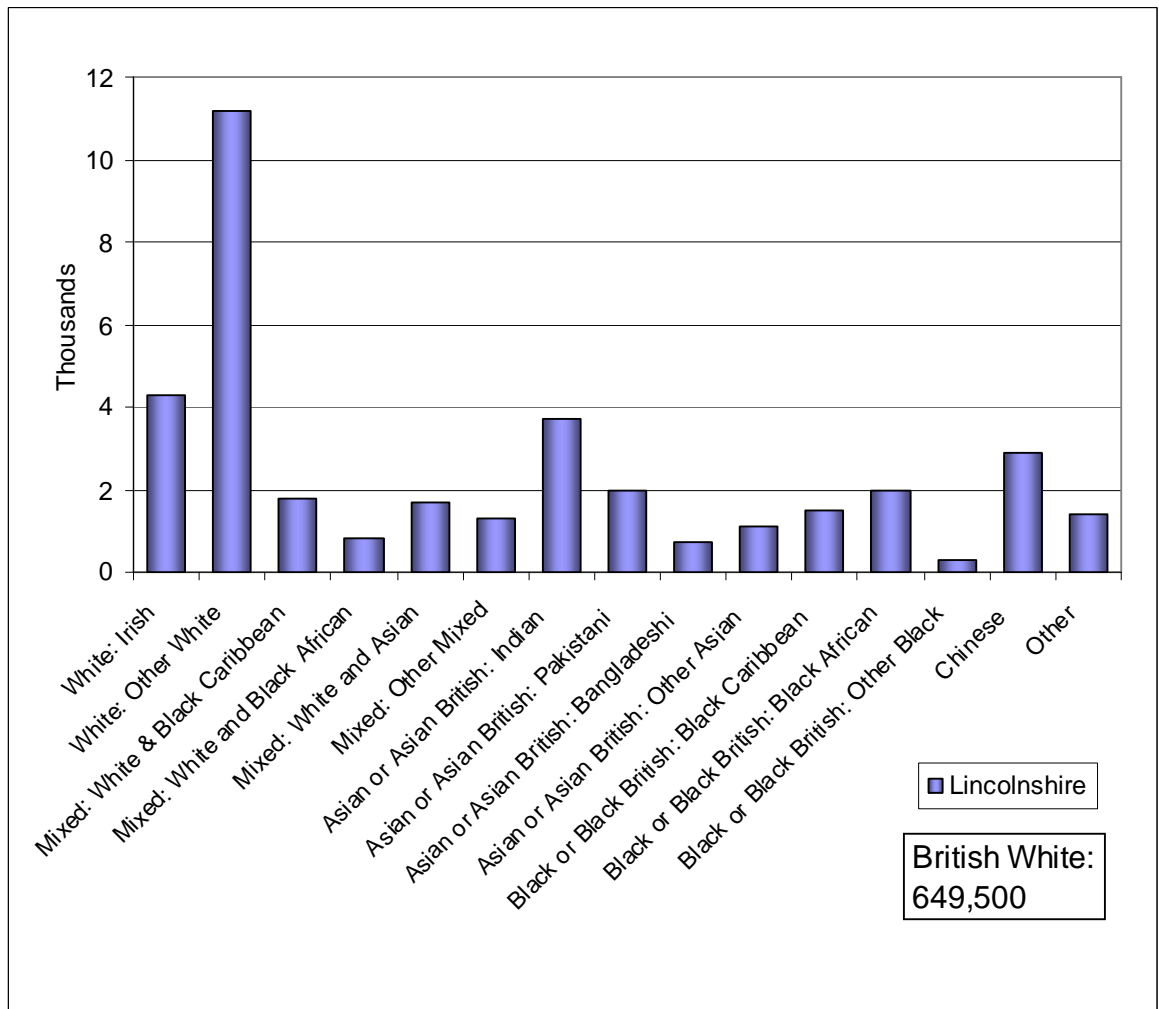
Figure 7:14-19 population projections for Lincolnshire, 2006-2030



Source: ONS 2006-based population projections

- 82 From peak levels of 14-19 population in 2007-09, Lincolnshire will see a steady decline until 2018-19. The 2018-19 level will be around 8% lower. After 2019 the population will start to increase, returning to 2008 levels by 2023 and continuing to rise through till 2031 where they are forecast to be 8.5% above the 2007-09 level.

Figure 8: Estimate of resident population by ethnic group (all ages), 2006

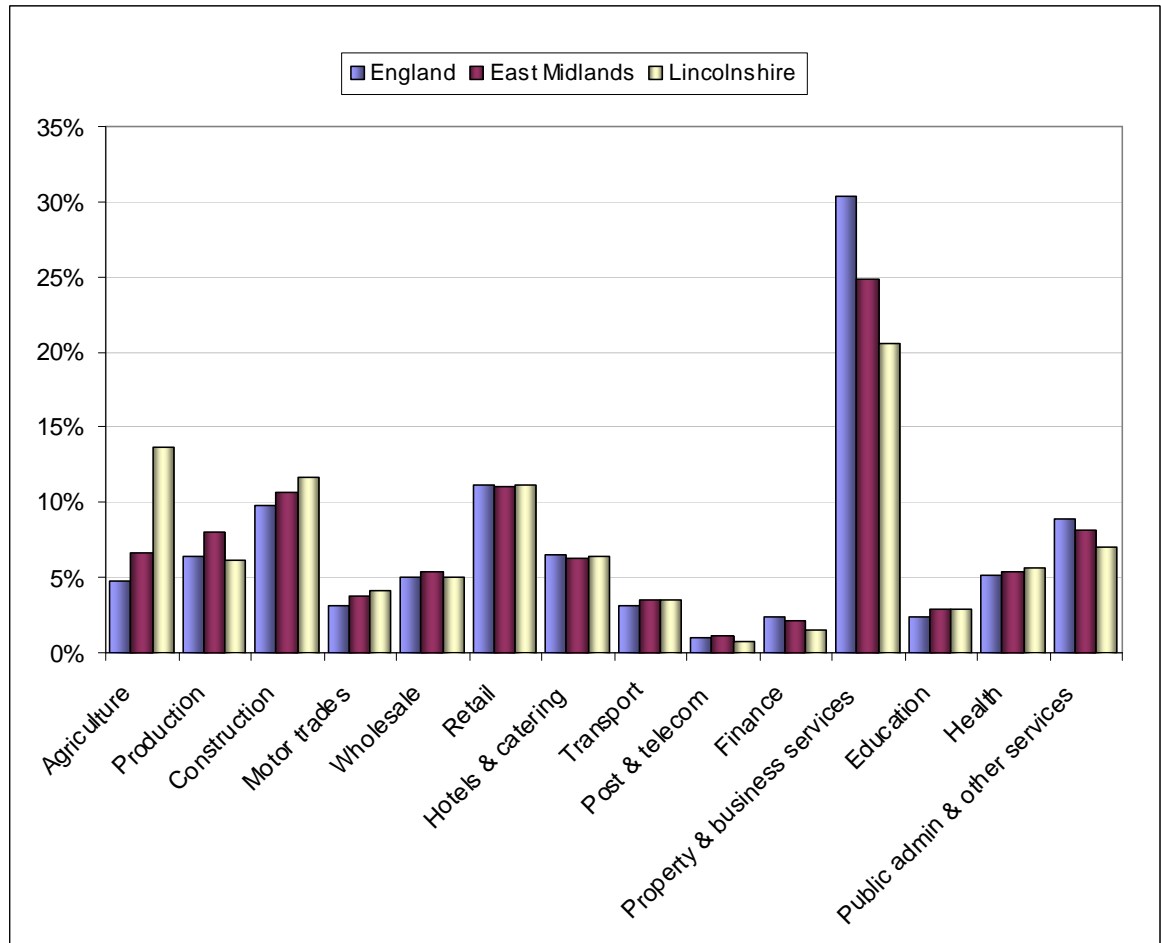


Source: OSN Estimates of resident population by ethnic group (experimental statistics). NB: the chart above does not show the White British population figures

83 Lincolnshire has a high 'Other White' ethnic group within its population (1.6%) followed by the White Irish community (0.6%). The two largest non-white communities in Lincolnshire are Indian (0.5%) and Chinese (0.4%). Overall 3.1% of the population are non-white. The White British population is the largest group in Lincolnshire (95%).

Employers and Employment in Lincolnshire

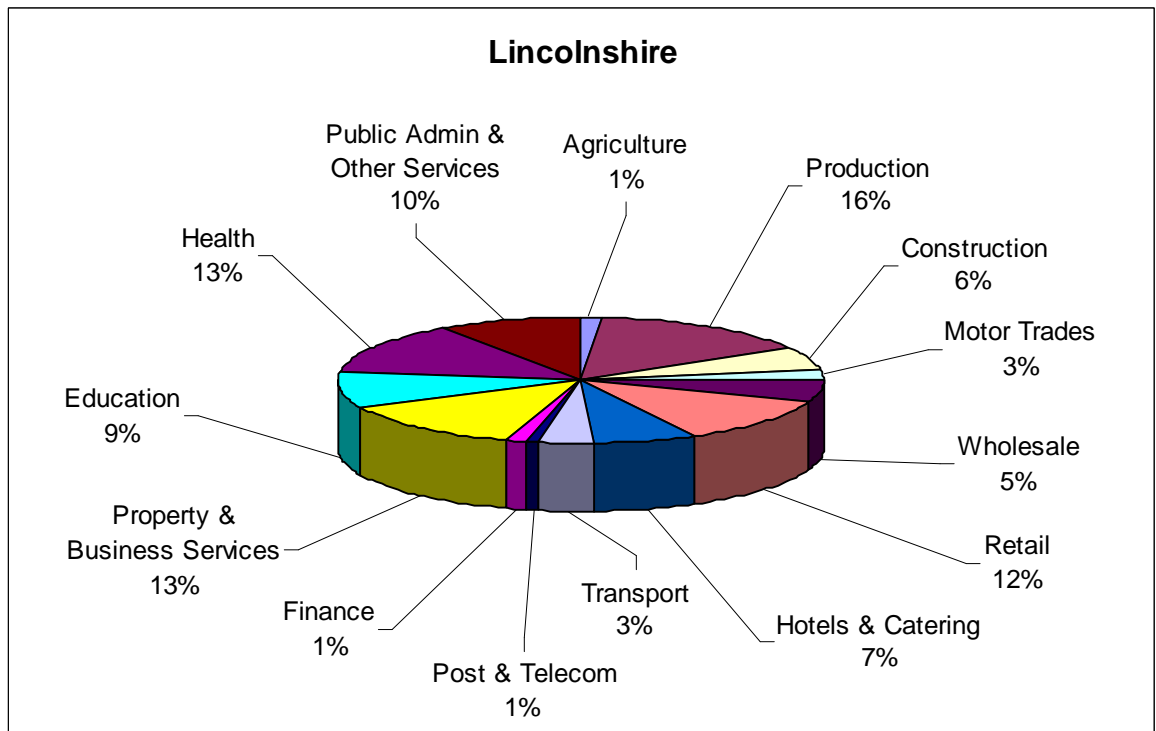
Figure 9: Distribution of business by broad industrial group



Source: Inter Departmental Business Register (IDBR) 2008

- 84 The largest sectors are 'Property & Business Services' (20.5%), 'Agriculture' (13.7%), and Construction (11.6%). Lincolnshire hosts the highest level of 'Agriculture' units in the region with only Rutland coming close to these levels. 'Property & Business Services' as with the Region is the largest sector but is 4.3 pp and 9.8pp below Regional and National levels respectively.

Figure 10: Employees in Lincolnshire by sector, 2007



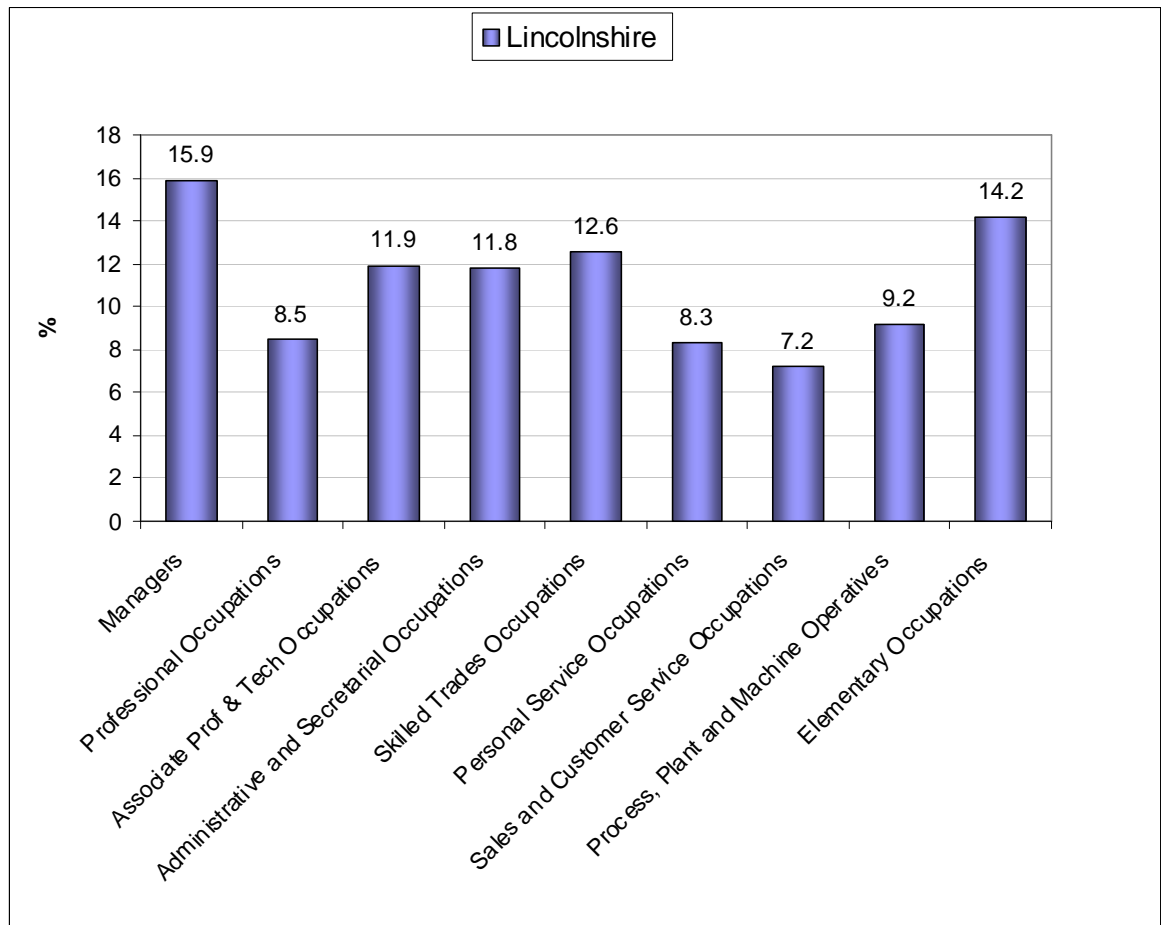
Source: Annual Business Inquiry (ABI)²⁶ (2007)

- 85 The sectors employing the largest numbers of people are 'Production' (16%, 40300 persons), 'Property & Business Services' (13%, 35100 persons), 'Health' (13%, 34900 persons) and 'Retail' (12%, 30900 persons).

²⁶ The Annual Business Inquiry (ABI) shows the distribution of employees by industry. The ABI is a survey of a sample of businesses within the IDBR. Therefore there are sampling errors as with any survey and results should be viewed as a guide not an absolute. All numbers rounded to nearest 100.

Skills

Figure 11: Employment by occupation group, 2007/08



Source: Annual Population Survey (APS), July 2007-June 2008

- 86 'Managers', 'Professional Occupations' and 'Associate Professional and Technical' are grouped together as 'Higher Occupations'. 'Administrative and Secretarial', 'Skilled Trades Occupations', 'Personal Service Occupations' and 'Sales and Customer Service Occupations' are grouped together as 'Intermediate Occupations'. 'Process, Plant and Machine Operators' and 'Elementary Occupations' are grouped together as 'Lower Occupations'. Recent and ongoing change is moving away from 'Lower' occupations towards 'Intermediate' and 'Higher' occupations.
- 87 'Managers' are now the largest single group at 15.9%. 'Higher' occupations are now approaching the same percentage as 'Intermediate' occupations as the movement from 'Lower' to 'Higher' occupations become more pronounced.

Table 44: Proportion of 19-59/64 population with qualifications by level, 2007

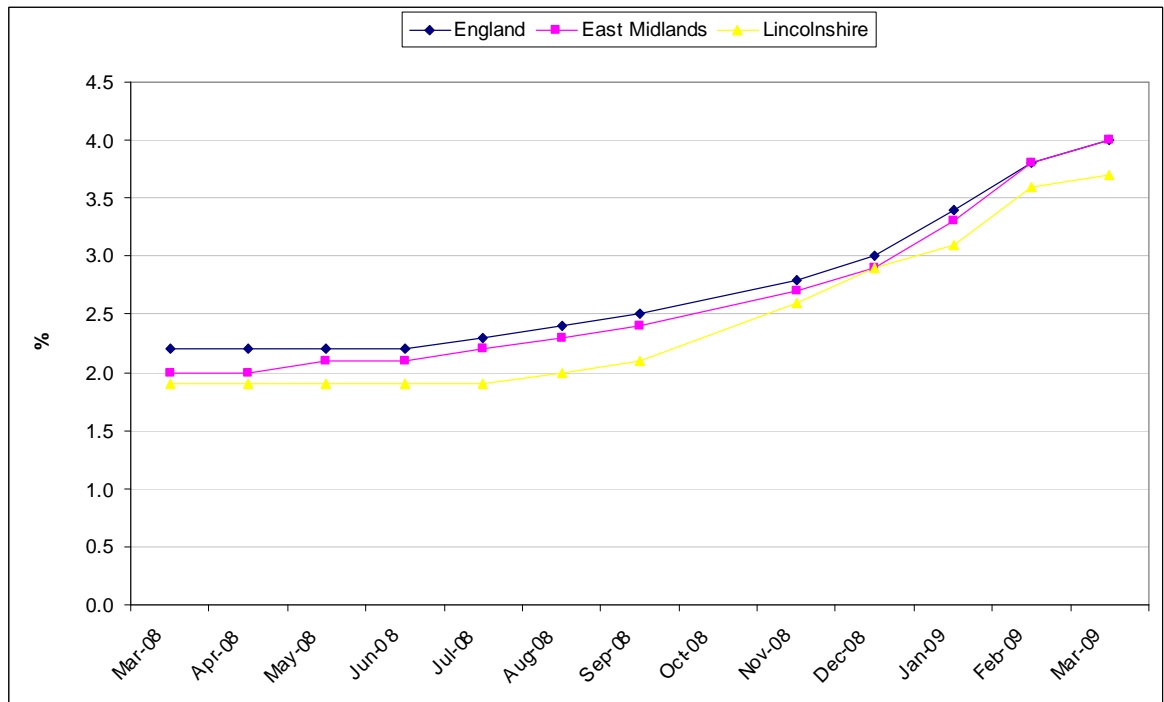
	Qualified to at least Level 4	Qualified to at least Level 3	Qualified to at least Level 2	Qualified lower than Level 2	Number (000s) with a qualification below Level 2	% with no qualifications	Number (000s) with no qualifications
Lincolnshire	24.9%	46.0%	67.4%	22.2%	84	10.4%	40
Rutland	34.1%	56.7%	78.3%	14.1%	3	7.6%	2
East Midlands	27.3%	47.0%	67.2%	19.7%	499	13.1%	331

Source: Annual Population Survey 2007, <http://www.dcsf.gov.uk/rsgateway/DB/STA/t000809/Table1.xls>

88 Lincolnshire has a lower percentage of its working-age population qualified to at least Level 4 or 3 compared to the region, and a similar proportion qualified to at least Level 2. A higher percentage in Lincolnshire had qualifications below 2 (22.2% against 19.7%) compared to the region but there was a lower proportion with no qualifications (10.4% against 13.1%).

Unemployment

Figure 12: Job Seekers Allowance Claimants Rates



Source - Jobcentre Plus via Office of National Statistics (ONS)

89 Over the last year Lincolnshire has tracked a little below the National and Regional claimant levels. The March 09 figure is 3.7% (representing 15,200 persons). After 4 months of continuous growth of claimants March 09 has shown a slowing of increase (0.1 percentage points).

Part 5 - Sub-Regional Group (SRG) overview

- 90 This section is intended to bring together issues from each local authority within the Sub-Regional Group to inform the planning discussions by presenting a more rounded picture.

Lincolnshire and Rutland SRG

- 91 Participation of 16 and 17 year olds in education and training for both Lincolnshire and Rutland were below regional averages. Rutland's participation has declined between 2004 to 2006, whilst Lincolnshire's participation has remained static in 2005 and 2006 following a slight increase from 2004 to 2005. Regional and national levels, by contrast, have increased during this period.
- 92 A key issue for all areas is the drop out at 17, which is currently following national trends.
- 93 Achievement at Level 2 and 3 by 19 in both areas are above regional levels. However, Lincolnshire is below the national average, whilst Rutland is the only area in the region to be above national averages for both Level 2 and 3 by 19.
- 94 Apprenticeship participation will be an issue in both areas. Participation will be affected by the recession as fewer employers come forward to offer places.
- 95 Travel to learn patterns for FE show that Rutland resident learners access their learning mainly within the East Midlands, and primarily in Lincolnshire, Northamptonshire and Leicestershire. The majority of Lincolnshire resident learners access provision within the locality (74%) though a minority do travel to Northamptonshire, Derby City, Leicestershire and other local authorities in the region. Most significant is the numbers accessing FE provision outside of the region (nearly 1900 learners), particularly in Yorkshire and Humberside (almost 1200 learners).
- 96 The majority of Schools Sixth Form learners living in Lincolnshire attended a Schools Sixth Form in their locality (98.8%). Only 1.1% of learners travelled to institutions outside of the area. Rutland school sixth form learners primarily travelled outside of the region (38.7%) or to Northamptonshire (22.6%), Lincolnshire (21%) or Leicestershire (16.1%)

**Learning and Skills Council
East Midlands Regional Office**

17A Meridian East
Meridian Business Park
Leicester, LE19 1UU

Tel: 0845 019 4170
Fax: 0116 228 1801

<http://www.lsc.gov.uk/regions/EastMidlands>

© LSC June 2009
Published by the Learning and Skills Council

Extracts from this publication may be reproduced for non-commercial educational or training purposes on condition that the source is acknowledged and the findings are not misrepresented.

This publication is available in electronic form on the Learning and Skills Council website: www.lsc.gov.uk

If you require this publication in an alternative format or language, please contact the LSC Help Desk: 0870 900 6800

Publication reference: LSC-P-EM-46000