

16–19 Strategic Analysis for Northamptonshire

June 2009

Of interest to Local Authorities and other
Partners and Stakeholders involved in
14-19 planning

16-19 Strategic Analysis Northamptonshire

15 June 2009

Table of contents:

Introduction	3
Background and Issues for Consideration	5
Part 1 - 16-18 Resident learner participation	8
Analysis of participation by learning type 2007/08	8
Further Education (FE)	8
Apprenticeships.....	10
School Sixth Forms	13
Entry to Employment	16
September Guarantee	19
Travel to learn patterns	20
Further Education	20
School Sixth Forms	21
16-18 Resident Learner Achievement.....	23
FE Achievements	23
Apprenticeship Achievement	23
School Sixth Forms	24
Part 2 - Progress to PSA targets at 19	25
Part 3 - Provision within Northamptonshire	29
Further Education providers.....	29
FE Participation	29
FE Achievements	32
FE Funding.....	33
School Sixth Forms	34
S6F Participation	34
S6F Achievement	35
S6F Funding.....	37
Apprenticeship Providers	38
Apprenticeship Participation	38
Apprenticeship Achievement.....	40
Apprenticeship Funding.....	42
Part 4 - Area Context	43
14-19 Population information	43
Employers and Employment in Northamptonshire	45
Skills.....	47
Unemployment.....	48

Introduction

This 16-19 report is the first in a series of three to be published for Local Authorities over the next 3 months. The purpose of the reports is to provide, in the Machinery of Government Transition year, sufficient details of 16-19 provision and learners for Local Authorities to be able to:

- a Complement their existing strategic planning for 14-19 in the context of economic and employment information for their area.
- b Develop detailed commissioning plans at LA and Strategic Regional Group levels.
- c Focus on specific areas for improvement in their planning.
- d Understand the provision accessed by their residents.
- e Understand the scope and quality of the provision for those learners, wherever they are resident who choose to learn within providers situated within the LA's boundaries.

What the Series One report contains

Series one report contains sufficient detail of provision accessed by residents to enable points (a), (c) and (d) above. In addition, by its focus on providers it also allows LAs to achieve points (b) and (e) above.

Series Two and Three reports

These reports will provide more detail of specific provision and groups of learners, such as those with Learning Difficulties and/or Disabilities (LDD) and those on Entry to Employment (E2E) programmes. In addition details of the curriculum offered in 16-18 institutions and the characteristics of learners studying those curricula will be provided. It is intended that the series two and three reports will aid LAs in particular in the execution of points (b) and (c) above by increasing their understanding of need and provision. Planned final volumes of learners and funding for 2009/10 for the relevant providers in each Local Authority will also be part of series two reports.

Data for the reports

Where relevant data is published nationally by the Department for Children, Schools and Families, such as that in statistical first reports, or by the Office for National Statistics, this data has been used. Much of the remaining data comes from submissions on the Individual Learner Record (ILR) made by providers to the LSC, from school census data, or from internal LSC systems designed to deal with allocations of funding to providers and measuring targets. Since data comes in at specific times of the year for FE and schools, only whole year data is provided for these types of institutions. This restricts these data sets to 2005/06 to 2007/08. For E2E and Apprenticeships, data arrives monthly, so in-year (2008/09) data is provided in these cases.

In January, 2007, the LSC consulted with the sector on a new funding approach in the document *Delivering World-class Skills in a Demand-led System*. Following this consultation the LSC's funding approach changed significantly for 2008/09. This has had an effect on how the data is collated and aggregated together in 2008/09. Therefore it is urged that when making comparisons across these two years this change is taken into consideration.

Accessing the reports and information

The reports will be made available via the LSC's external website. Where information is confidential a separate file will be provided for LAs on disc. From July 2009, an updated data website will be available for LAs.

Background and Issues for Consideration

- 1 The working age employment rate¹ in Northamptonshire is 80.1%, which is 4.1 percentage points (pp) above regional averages, and highest in region. The level of economic inactivity (15.7%) and unemployment (4.8%) are better than both that in the region and that in England as a whole.

The largest number of **employers**² is to be found in 'Property & Business Services' (28.4%), 'Construction' (11.3%), 'Retail' (9.2%) and 'Production' (9.2%). The largest variance from the region as a whole can be seen in 'Property & Business Services' (3.6 percentage points {PP}) above, and 'Retail' (1.9 pp) below.

The greatest proportions of **employees**³ are to be found in 'Property and Business Services' (17%) 'Production' (16%), followed by 'Health' and 'Retail' (both at 10%).

- 2 Reviewing occupations⁴ within Northamptonshire, 'Managers' are now the largest single group at 16.4%. Higher occupations are now the largest combined group and the movement from 'Lower' to 'Higher' occupations is in the top half of Local Authorities in East Midlands.

- 3 In 2007 the levels of qualification⁵ in the population in Northamptonshire for 'At Least level 2', 'At least Level 3' and 'At Least Level 4' are 67.4%, 46.1% and 28.6% respectively. For the Level 2 and Level 4 measures Northamptonshire is above the regional average but below the national position. For Level 3 results are below both regional and national averages. Of concern is the fact that rates in 2007 have fallen for all 3 measures -1.5 percentage points (pp), -2.6 pp, and -1.3 pp respectively for 'At Least Level 2', 'At Least Level 3' and 'At Least Level 4'

- 4 Participation⁶ in education and training of 16 and 17 year olds combined is 77%, 76% and 76% for 2004, 2005 and 2006 respectively. This is a concern as the East Midlands average over the same three years was 77%, 78% and 79%. The All England position is even stronger at 80%, 81% and 82%.

Over the three years, participation at 16 has remained fairly static at 81%, with participation at 17 has remained equally static at 71%. The comparable data for East Midlands and All England have shown an improving position reaching 83%/74% and 87%/77% respectively in 2006.

- 5 From peak levels of 14-19 population⁷ in 2007, Northamptonshire will see a steady decline until 2016-17. The 2016-17 level will be around 8% lower. After 2017 the population will start to increase, returning to 2007 levels by

¹ Annual Population Survey – Oct 2007 – Sept 2008

² Inter Departmental Business Register (IDBR) 2008

³ Annual Business Inquiry (ABI) 2007

⁴ Annual Population Survey – Jul 2007 – Jun 2008

⁵ DCSF - Highest qualification held by population aged 19-59/64 2007

⁶ DCSF - Participation in education and WBL of 16 & 17 year olds by LEAs in England

<http://www.dcsf.gov.uk/rsgateway/DB/SFR/s000792/index.shtml>

⁷ Office of National Statistics – Population Projections

2021 and continuing to rise through till 2031 where they are forecast to be 15% above the 2006-07 level.

- 6 In 2006⁸ 38% and 7% of 16 year olds studied in Maintained and Independent School 6th forms respectively. This shows a higher proportion than East Midlands (34% and 5%), and All England (30%, 7%). School learner numbers have been increasing steadily reflecting both population change and the choice of School 6th Form. Early data in 2008/09 indicates a growth of 14% over 2007/08.

FE numbers have risen from 2006/07 to 2007/08 (+3%), with early 2008/09 data indicating a small drop.

Apprenticeships numbers are declining, -2.4% between 2006/07 and 2007/08. Early 2008/09 data indicates a large decline of -9.0% against the previous year.

- 7 Achievement of Level 2⁹ at 16 is 59.2% which is 5.8 percentage points (pp) below the All England average. When English and maths are taken into account Northamptonshire at 45.1% was 2.2 pp below All England levels. Northamptonshire showed good growth between 2006/07 and 2007/08 (4.3 pp), but because their position was already well below the national position they will need to achieve greater improvements than the average in order to close the gap.

- 8 For Levels 2 and 3 at 19¹⁰ (PSA Target) the results for the cohort who reach 19 in 2007/08 was 71.4% and 43.6% respectively. For Level 2 this is -1.7 pp and -5.3 pp below East Midlands and All England averages. For Level 3 this is -2.4 pp and -6.2 pp below East Midlands and All England averages.

For Level 2 comparing improvement between 2003/04 and 2007/08 Northamptonshire has increased by 8.7 pp, however East Midlands and All England averages have increase by 9.9 pp and 10.4 pp respectively. For Level 3 comparing improvement between 2003/04 and 2007/08 Northamptonshire has increased by 4.3 pp, however East Midlands and All England averages have increase by 7.2 pp and 7.8 pp respectively. In order to reduce the gaps to regional and national figures Northamptonshire will need to exceed the future improvement rates in these areas.

- 9 In 2007/08, the success rates¹¹ for provision in FE colleges for Full Level 2 (72.9%), Full Level 3 (74.4%) and Overall (80.7%) was 1.1 pp below, 0.4 pp above and 1.8 pp above East Midlands averages. Comparing 2007/08 success rates to 2006/07, Northamptonshire improved by more than the Regional average for Full Level 2 and Overall, but less than the Region for Full Level 3.

In 2007/08, 1,345 Full Level 2 aims were achieved which is a 12% increase over 2006/07. 1,044 Full Level 3 aims were achieved which is a 22% increase over 2006/07. Overall 11,356 aims were achieved which is an 11% increase over 2006/07.

⁸ DCSF - Participation in education and work based learning (WBL) of 16 and 17 year olds

⁹ DCSF - School Performance Tables

¹⁰ DCSF - Administrative Data Set 2007/08

¹¹ ILR - FE Success Rates Drill Downs Detail 05/06 - 07/08.xls

- 10 In 2007/08 Northamptonshire LSC achieved 681 and 103 Framework Completions¹² in Apprenticeship (A) and Advanced Apprenticeship (AA) respectively. This represented an increase of 9.8% (A) and fall of 18.9% (AA). Overall Success Rate¹³ in 2007/08 was 65% which is at the regional average and represented a 10 percentage point raise over 2006/07.

Issues for consideration/improvement

- Participation¹⁴ in education and training of 16 and 17 year olds is falling behind regional and national averages.
- Level 3 in the population is below both regional and national averages.
- Level 2, 3 & 4 in the population all reduced in last published data (2007).
- Apprenticeship numbers are falling.
- Achievement of Level 2¹⁵ at 16 (both with and without English and Maths) is below All England levels. Whilst Northamptonshire showed good growth between 2006/07 and 2007/08 the gap to England average needs to close.
- Level 2 and Level 3 at 19 years is below regional and national levels.

Note:

The above issues for consideration should be reviewed in the context of the movement of available employment away from elementary occupations towards higher order occupations.

¹² Source: ILR - WBL New Measures of Success Rates Drill Downs 2007/08

¹³ Source: ILR - WBL New Measures of Success Rates Drill Downs 2007/08

¹⁴ DCSF - Participation in education and WBL of 16 & 17 year olds by LEAs in England
<http://www.dcsf.gov.uk/rsgateway/DB/SFR/s000792/index.shtml>

¹⁵ DCSF – School Performance Tables

Part 1 - 16-18 Resident learner participation

11 This section is intended to show where the young people living within Northamptonshire local authority are learning and to highlight any issues relating to demand for learning within the area.

Analysis of participation by learning type 2007/08

Further Education (FE)

Table 1: East Midlands 16-18 FE learners by LA of residence

Learner LEA	2006/07 (full year)		2007/08 (full year)		2008/09 (as at March 2009)	
	Learners	% of East Midlands	Learners	% of East Midlands	Learners	% of East Midlands
Derby City	3,401	5.9%	3,575	6.0%	3,406	5.7%
Derbyshire	9,644	16.8%	9,708	16.3%	9,746	16.2%
Leicester City	6,637	11.5%	6,850	11.5%	7,016	11.7%
Leicestershire	6,856	11.9%	7,098	11.9%	6,996	11.6%
Lincolnshire	8,144	14.2%	8,400	14.1%	9,011	15.0%
Northamptonshire	8,186	14.2%	8,424	14.1%	8,366	13.9%
Nottingham City	4,811	8.4%	5,082	8.5%	4,965	8.3%
Nottinghamshire	9,336	16.2%	9,702	16.3%	10,136	16.8%
Rutland	523	0.9%	562	0.9%	525	0.9%
(Unknown based on Postcode)			237	0.4%		
Total East Midlands	57,538	100.0%	59,638	100.0%	60,167	100.0%

Source: 2007/08 ILR F05 returns (FE 0506-0708 Learner Drill down) and 2008/09 ILR F02 return

12 There were 8,186 and 8,424 16-18 year old FE learners in 2006/07 and 2007/08 respectively. This was a growth of 2.9 % between the 2 years, which is a little below the East Midlands figure of 3.6%. In 2007/08, Northamptonshire residents represented 14.1% of all 16-18 year old FE learners within East Midlands.

Table 2: Northamptonshire 16-18 FE learners by gender

	Year	Female		Male	
Northamptonshire	2006/07	3,976	48.6%	4,210	51.4%
	2007/08	4,152	49.3%	4,272	50.7%
East Midlands	2006/07	29,226	50.8%	28,312	49.2%
	2007/08	30,217	50.7%	29,421	49.3%

Source: 2007/08 ILR F05 returns (FE 0506-0708 Learner Drill down)

13 Using LSC data returns, the female/male gender split in FE learners in 2006/07 and 2007/08 was 48.6% to 51.4% and 49.3% to 50.7% respectively. The comparable figures for East Midlands were 50.8% to 49.2% and 50.7%

to 49.3% respectively. Using Office of National Statistics (ONS) Mid 2007 Population Estimates the 16-18 year old population female/ male split in Northamptonshire was 48.2% to 51.8%.

Table 3: Northamptonshire 16-18 FE learners by ethnicity

	Year	Asian		Black		Chinese		Mixed		Other		Unknown		White	
		Count	%	Count	%	Count	%	Count	%	Count	%	Count	%	Count	%
Northamptonshire	2006/07	207	3%	289	4%	23	0%	260	3%	44	1%	109	1%	7,254	89%
	2007/08	234	3%	331	4%	26	0%	259	3%	35	0%	90	1%	7,449	88%
East Midlands	2006/07	4,935	9%	1,769	3%	164	0%	1,781	3%	487	1%	669	1%	47,733	83%
	2007/08	4,973	8%	1,881	3%	174	0%	1,839	3%	471	1%	656	1%	49,644	83%

Source: 2007/08 ILR F05 returns (FE 0506-0708 Learner Drill down)

- 14 LSC data returns show that the white community in Northamptonshire represented 89% and 88% of the population in 2006/07 and 2007/08 respectively. This is above the East Midlands average of 83%. In 2007/08 the Black, Asian and Mixed communities represented 4%, 3% and 3% of the population respectively. The England split white to non-white is 88.7% to 11.3%. (ONS MID 2006 Experimental Ethnicity Estimates).

Table 4: Northamptonshire 16-18 FE learners by highest level of study

	Year	Notional Level									
		Entry and Level 1		Level 2		Level 3		Level 4, 5 and Higher		Other (including Mixed)	
Northamptonshire	2006/07	1,696	21%	2,847	35%	3,571	44%	17	0%	55	1%
	2007/08	1,972	23%	2,847	34%	3,535	42%	14	0%	56	1%
East Midlands	2006/07	10,785	19%	17,631	31%	28,939	50%	65	0%	118	0%
	2007/08	12,359	21%	17,496	29%	29,556	50%	53	0%	174	0%

Source: 2007/08 ILR F05 returns (FE 0506-0708 Learner Drill down)

- 15 In 2007/08, 42% of 16-18 FE learners resident in Northamptonshire were studying at Level 3, well below the regional average of 50%. A third were studying at Level 2, slightly above the regional average of 29%. The remaining 23% were studying at Entry and Level 1, which is an increase since 2006/07, and above the regional average (21%).

Apprenticeships

16 This section examines the participation of learners living in Northamptonshire LA area who have undertaken or are undertaking Apprenticeships. The data includes learners who have been funded by East Midlands LSC areas, other LSC areas in England and the National Employer Service. An average of the number of learners undertaking Apprenticeships in a given month over a 12 month period is used to show participation in the 2006/07 and 2007/08 tables.

Table 5: Resident Learners by LA Level participating on Apprenticeships and proportion within the East Midlands¹⁶

Local Authority	2006/07	% East Midlands	2007/08	% East Midlands
Derby City	832	6.0	843	6.3
Derbyshire	2769	20.1	2657	19.7
Leicester City	519	3.8	477	3.5
Leicestershire	1949	14.1	1899	14.1
Lincolnshire	2128	15.4	2013	14.9
Northamptonshire	2043	14.8	1994	14.8
Nottingham City	755	5.5	774	5.7
Nottinghamshire	2740	19.9	2767	20.5
Rutland	67	0.5	55	0.4
EAST MIDLANDS	13,802	100.0	13,479	100.0

Source: ILR - WBL AND E2E DRILL DOWNS 2006/07 and 2007/08 (July 2007 and July 2008)
'Average in Learning' data

17 In 2007/08, 14.8% of learners undertaking Apprenticeships from the East Midlands were living in Northamptonshire LA area.

Table 6: 16-18 Apprenticeship Participation by Programme Level, 2006/07 – 2007/08

Area	Programme Level	2006/07	2007/08	% change 2006/07 - 2007/08
Northamptonshire LA	Apprenticeships	1442	1407	-2.4
	Advanced Apprenticeships	601	588	-2.3
	Total	2043	1994	-2.4
East Midlands	Apprenticeships	8905	8719	-2.1
	Advanced Apprenticeships	4897	4760	-2.8
	Total	13,802	13,479	-2.3

Source: ILR- WBL AND E2E DRILL DOWNS 2006/07 and 2007/08 (July 2007 and July 2008)
'Average in Learning' data

¹⁶ The data shows an average of learners over a 12 month period undertaking an Apprenticeship

- 18 As per the region overall, there has been a decrease in overall Apprenticeship participation in 2007/08 from 2006/07 amongst learners resident in Northamptonshire (-2.4%). Reductions were evident at both Programme levels,

Table 7: 16-18 Overall Apprenticeship Programme Participation by Gender, 2006/07 – 2007/08

Area	Gender	2006/07		2007/08	
		Number	%	Number	%
Northamptonshire LA	Female	748	36.6	757	37.9
	Male	1295	63.4	1238	62.1
	Total	2043	100.0	1994	100.0
East Midlands	Female	4,958	35.9	4,916	36.5
	Male	8,844	64.1	8,563	63.5
	Total	13,802	100.0	13,479	100.0

Source: ILR - WBL AND E2E DRILL DOWNS 2006/07 and 2007/08 (July 2007 and July 2008)
'Average in Learning' data

- 19 The proportional gender split between males and females participating on Apprenticeships amongst Northamptonshire resident learners was similar to the regional proportion in 2006/07 and 2007/08.
- 20 There has been a slight growth in the volume of female participation from 2006/07 to 2007/08 whilst male participation has decreased. In contrast, the region has seen a decrease in both male and female participation.

Table 8: 16-18 Overall Apprenticeship Programme Participation by Ethnicity, 2006/07 – 2007/08

Area	Ethnicity	2006/07		2007/08	
		Number	%	Number	%
Northamptonshire LA	Ethnic Minority	58	2.8	62	3.1
	White	1,970	96.4	1,919	96.2
	Not Known	15	0.7	14	0.7
	Total	2,043	100.0	1,994	100.0
East Midlands	Ethnic Minority	420	3.0	472	3.5
	White	13,335	96.6	12,953	96.1
	Not Known	47	0.3	54	0.4
	Total	13,802	100.0	13,479	100.0

Source: ILR - WBL AND E2E DRILL DOWNS 2006/07 and 2007/08 (July 2007 and July 2008)
'Average in Learning' data

- 21 There was a similar proportion of minority ethnic residents from Northamptonshire undertaking an Apprenticeship compared to the regional average in 2006/07 and 2007/08. Also, like the region, there was a small increase in participation by this group in 2007/08.

- 22 Learners on Apprenticeships, as in FE, are asked whether they feel they have a learning difficulty and/or disability and so the numbers shown here and in later tables reflect learners who have self-declared a difficulty or disability.

Table 9: 16-18 Overall Apprenticeship Programme Participation by Learners with Learning Difficulties and/or Disabilities, 2006/07 – 2007/08

Local Authority	2006/07				2007/08			
	No Disability / Learning Difficulty	Not Known / Not Provided	Disability / Learning Difficulty Recorded	% with Disability / Learning Difficulty	No Disability / Learning Difficulty	Not Known / Not Provided	Disability / Learning Difficulty Recorded	% with Disability / Learning Difficulty
Northamptonshire LA	2573	11	156	5.7	2629	19	119	4.3
EAST MIDLANDS	12987	53	762	5.5	12768	65	646	4.8

Source: ILR - WBL AND E2E DRILL DOWNS 2006/07 and 2007/08 (July 2007 and July 2008)
'Average in Learning' data

- 23 The volume and proportion of learners with a learning disability and/or disability from Northamptonshire undertaking Apprenticeships has reduced between 2006/07 and 2007/08. This reduction was mirrored by the overall region.

2008/09 Data – Period 8 (latest to March 2009)

- 24 Latest information on Apprenticeships is available up to March 2009 in the academic year. The data below provides provisional indications of current participation on the Apprenticeship programme by learners resident in Northamptonshire. Data as at March 2008 for 2007/08 is used to compare the current picture.

Table 10: 16-18 Apprenticeship Participation, 2008/09

Area	Programme Level	2007/08 (March 08)	2008/09 (March 09)	2007/8 - 2008/09 Change	
				Number	% Change
Northamptonshire LA	Apprenticeship	1438	1,281	-157	-10.9
	Advanced Apprenticeship	612	585	-27	-4.4
	Total	2050	1,866	-184	-9.0
East Midlands	Apprenticeship	9036	8,577	-459	-5.1
	Advanced Apprenticeship	4990	4,748	-242	-4.9
	Total	14027	13,325	-702	-5.0

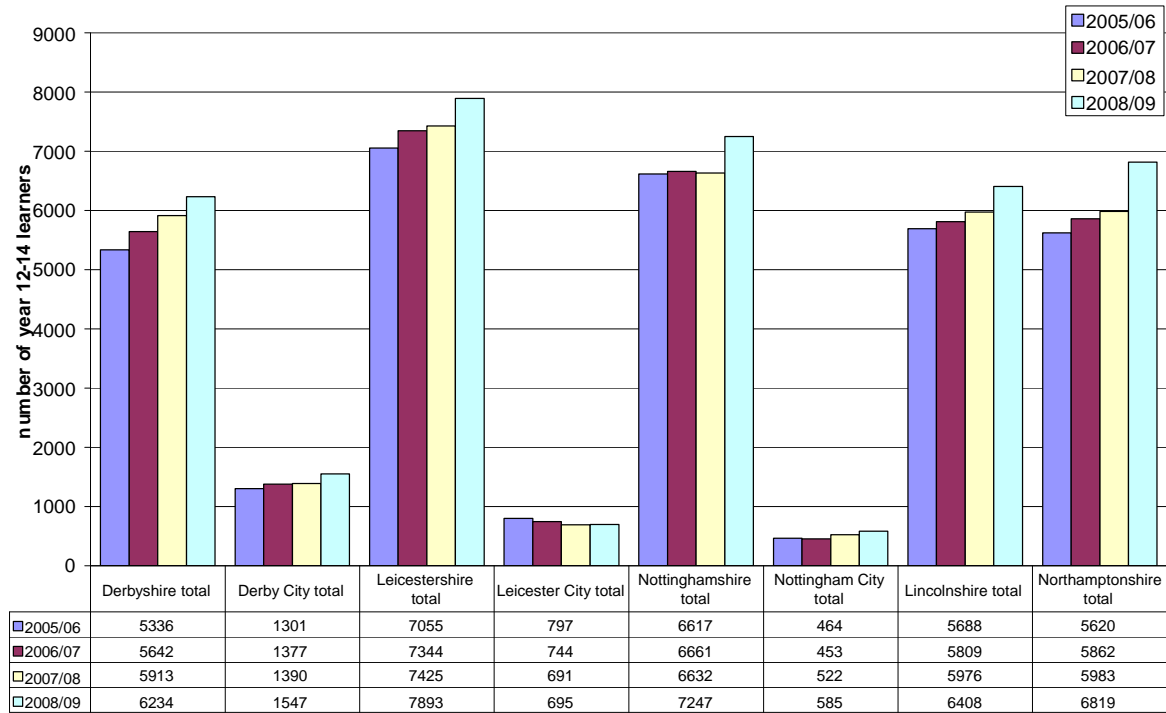
Source: ILR - Employer Responsive Drill Downs 2008/09, Period 8 (March 2009), WBL and E2E 2007/08 Period 8 Drill Downs (March 2008)

- 25 Overall, Apprenticeship participation is currently considerably lower in 2008/09 compared to the same period in 2007/08 amongst learners residing in Northamptonshire (-184 learners, -9%) and in the region (-702 learners, -5%). In Northamptonshire, the reduction was greater in Apprenticeships.

School Sixth Forms

26 This section provides school sixth form participation information in Northamptonshire.

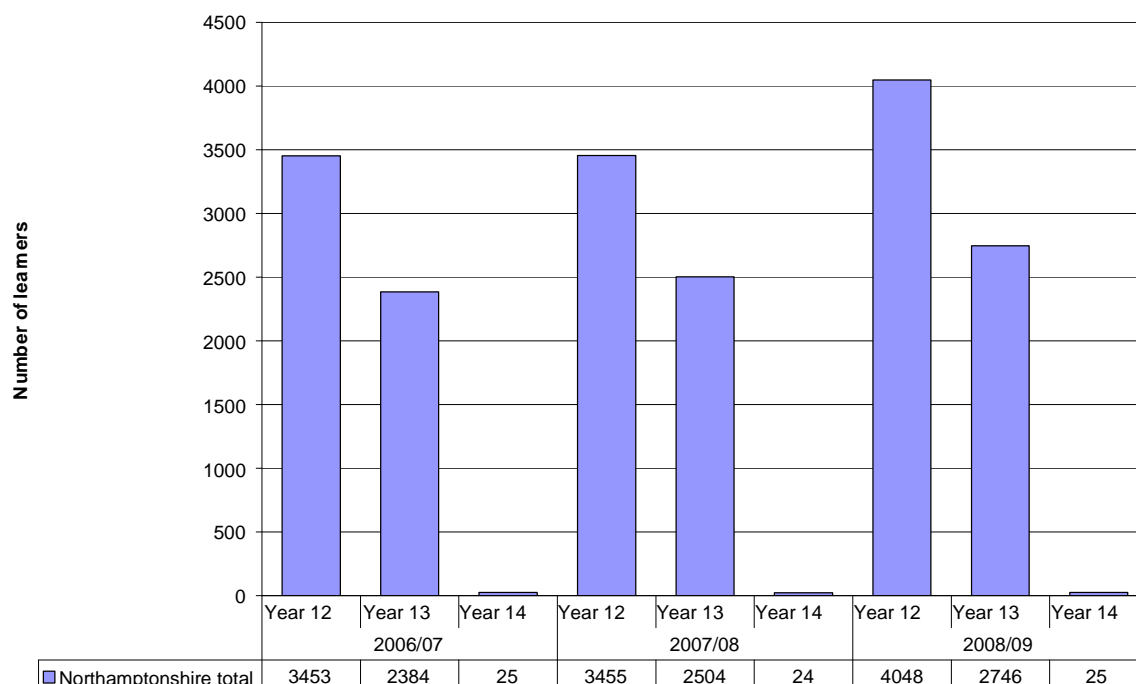
Figure 1: 16-18 learner numbers in school sixth forms, 2006/07-2008/09



Source: PLASC, 2006-2008

- 27 Over the last 4 years, the school sixth form population has grown by 21%.
- 28 Northamptonshire saw an increase of 836 learners in Years 12-14 in 2008/09, a 14 per cent increase on 2007/08 numbers. This was the highest rate of increase in the East Midlands.

Figure 2: Learner numbers in Years 12-14 for Northamptonshire, 2006/07-2008/09



Source: PLASC, 2006-2008

- 29 There is a 32% decrease in learners in the cohort between years twelve and thirteen in Northamptonshire School Sixth Forms. A very small percentage stayed on in learning into year 14.

Table 11: 16-18 learners attending a Schools Sixth Form funded by the LSC East Midlands: Gender breakdown (% of total group)

School LA	2007/08 Learners		2008/09 Learners	
	Female %	Male %	Female %	Male %
Derby City	54.5	45.5	54.2	45.8
Leicester City	51.5	48.5	49.4	50.6
Nottingham City	57.3	42.7	56.4	43.6
Nottinghamshire	53.1	46.9	53.3	46.7
Derbyshire	53.4	46.6	53.0	47.0
Leicestershire	52.3	47.7	50.5	49.5
Lincolnshire	53.2	46.8	53.1	46.9
Northamptonshire	53.3	46.7	52.6	47.4
East Midlands	53.1	46.9	52.5	47.5

Source: LSC MI 2007/08 and 2008/09 Schools Sixth Form Analysis

- 30 The proportional gender split of those attending a Schools Sixth Form in Northamptonshire is similar to the region both in 2007/08 and 2008/09, with more females participating than males.

**Table 12: 16-18 learners attending a Schools Sixth Form funded by the LSC
East Midlands: Ethnicity breakdown (% of total group)¹⁷**

LA Area	Year	Any Other	Asian or Asian British	Black or Black British	Chinese	Mixed Heritage	Not Known/Not Provided	White
Derby	2007/08	0.2	16.0	2.6	1.0	2.5	2.2	75.4
	2008/09	0.7	14.7	2.1	0.8	2.3	1.3	78.1
Leicester	2007/08	1.0	40.1	5.8	0.0	7.1	0.9	45.1
	2008/09	1.2	38.6	6.4	0.1	5.7	1.9	46.1
Nottingham	2007/08	0.2	14.5	10.7	1.1	4.5	0.9	68.0
	2008/09	1.0	19.1	8.9	0.5	5.2	0.2	65.1
Nottinghamshire	2007/08	0.4	2.4	0.9	0.6	1.1	0.8	93.9
	2008/09	0.4	2.5	0.8	0.8	1.4	1.4	92.6
Derbyshire	2007/08	0.1	0.9	0.2	0.4	1.2	0.6	96.6
	2008/09	0.2	0.8	0.2	0.3	1.1	0.8	96.5
Leicestershire	2007/08	0.3	12.1	0.5	0.5	2.0	2.0	82.5
	2008/09	0.3	11.8	0.6	0.5	2.2	2.6	82.0
Lincolnshire	2007/08	0.5	1.3	0.6	0.7	1.1	0.9	95.0
	2008/09	0.3	1.1	0.6	0.7	1.1	1.1	95.1
Northamptonshire	2007/08	0.4	4.6	2.3	0.5	2.5	1.5	88.2
	2008/09	0.4	4.6	2.9	0.5	2.7	1.2	87.9
East Midlands	2007/08	0.3	5.9	1.2	0.6	1.8	1.2	89.0
	2008/09	0.4	5.7	1.3	0.6	1.9	1.4	88.7

Source: LSC MI 2007/08 and 2008/09 Schools Sixth Form Analysis

- 31 Schools Sixth Forms in Northamptonshire had a high proportion of learners from an Asian or Asian British background in 2007/08 and 2008/09 compared to other minority ethnic groups. .

¹⁷ Asian or Asian British includes those who are Indian, Pakistani or Bangladeshi or from any other Asian background. Black or Black British includes those with an African or Caribbean heritage or from any other Black background. Mixed heritage includes those who are White and Asian, White and Black African, White and Black Caribbean or from any other Mixed heritage background. White includes those who are White British, White Irish or from any other White background.

Table 13: 16-18 learners attending a Schools Sixth Form funded by the LSC East Midlands: Special Educational Needs (SEN) (% of total group)

LA NAME	2007/08 Learners				2008/09 Learners			
	School/ Early Years Action %	School/ Early Years Action + %	Statement %	No SEN %	School/ Early Years Action %	School/ Early Years Action + %	Statement %	No SEN %
Derby	1.1	0.1	1.0	97.7	4.7	0.7	1.1	93.6
Leicester	5.6	2.4	0.3	91.7	6.9	3.1	0.7	89.3
Nottingham	5.6	2.4	0.4	91.5	5.5	2.1	0.3	92.1
Nottinghamshire	4.0	0.5	0.4	95.1	4.8	0.8	0.6	93.8
Derbyshire	1.9	0.8	0.4	96.8	1.5	1.1	0.6	96.9
Leicestershire	1.9	1.0	1.1	96.0	2.4	1.1	1.0	95.5
Lincolnshire	2.5	1.1	0.9	95.4	4.2	1.5	0.9	93.4
Northamptonshire	3.2	0.8	0.8	95.2	5.7	1.2	0.9	92.2
East Midlands	2.8	0.9	0.7	95.6	3.8	1.2	0.8	94.2

Source: LSC MI 2007/08 and 2008/09 Schools Sixth Form Analysis

- 32 Table 13 shows the proportion of 16-18 learners with Special Educational Needs (SEN) attending Schools Sixth Forms across local authority areas in the East Midlands in 2007/8 and 2008/09. The data reflects a variation of learner proportions with SEN across the different local authority areas partly due to the different policies applied in different localities. Further detailed information about learners with Special Educational Needs will be provided in a separate report to be published in the summer focusing on learners with learning difficulties and/or disabilities.

Entry to Employment

- 33 This section provides summary information about learners who have undertaken E2E learning in 2006/07 and 2007/08. The data is shown by the local authority in which the learner was living in during this period and also includes provision contracted outside of the region.
- 34 More detailed information about the learners in terms of gender, ethnicity and learning difficulties and/or disabilities will be available in the next phase of these packs at the end of June.

Table 14: E2E trends in Starts, Occupancy, and Average Length of Stay 2006/07 – 2007/08: learners living in local authority areas

2005/06 -2007/08 Summary	2006/07	2007/08	2006/07	2007/08	2006/07	2007/08	2006/07	2007/08
	Starts		Participation* (Occupancy)		Total Leavers		Average Stay (weeks)	
Derby City	550	473	196	182	524	431	15.5	16.2
Derbyshire	811	886	286	336	732	804	14.8	16.0
Leicester City	356	401	142	161	337	376	16.3	16.8
Leicestershire	312	380	119	148	318	342	15.1	15.9
Lincolnshire	621	613	272	297	573	553	20.9	19.1
NORTHAMPTONSHIRE	711	676	274	287	652	694	17.2	17.9
Nottingham City	314	335	143	178	285	288	21.9	23.5
Nottinghamshire	662	609	323	438	636	552	21.2	24.4
Rutland	7	3	5	7	11	1	22.2	19.3
EAST MIDLANDS	4344	4376	1760	2033	4068	4041	17.8	18.5

Source: ILR - WBL and E2E drill downs 2006/07 – 2007/08. *Occupancy shows the average number of learners on an E2E programme in one month during a 12 month period. .

- 35 Northamptonshire has seen a decrease in starts but an increase in participation in E2E between 2006/07 and 2007/08.
- 36 However, the average stay in E2E learning (by weeks) has increased marginally during this period. This suggests that the more difficult to reach learners are enrolling on the programme and requiring more support to stay in learning. Nevertheless, the average length of stay in Northamptonshire (17.9 weeks) in 2007/08 was still below that of the region (18.5 weeks). In some part this is due to a high regional average driven up by Nottingham City/Nottinghamshire where the programme provides learning at level one for E2E learners.

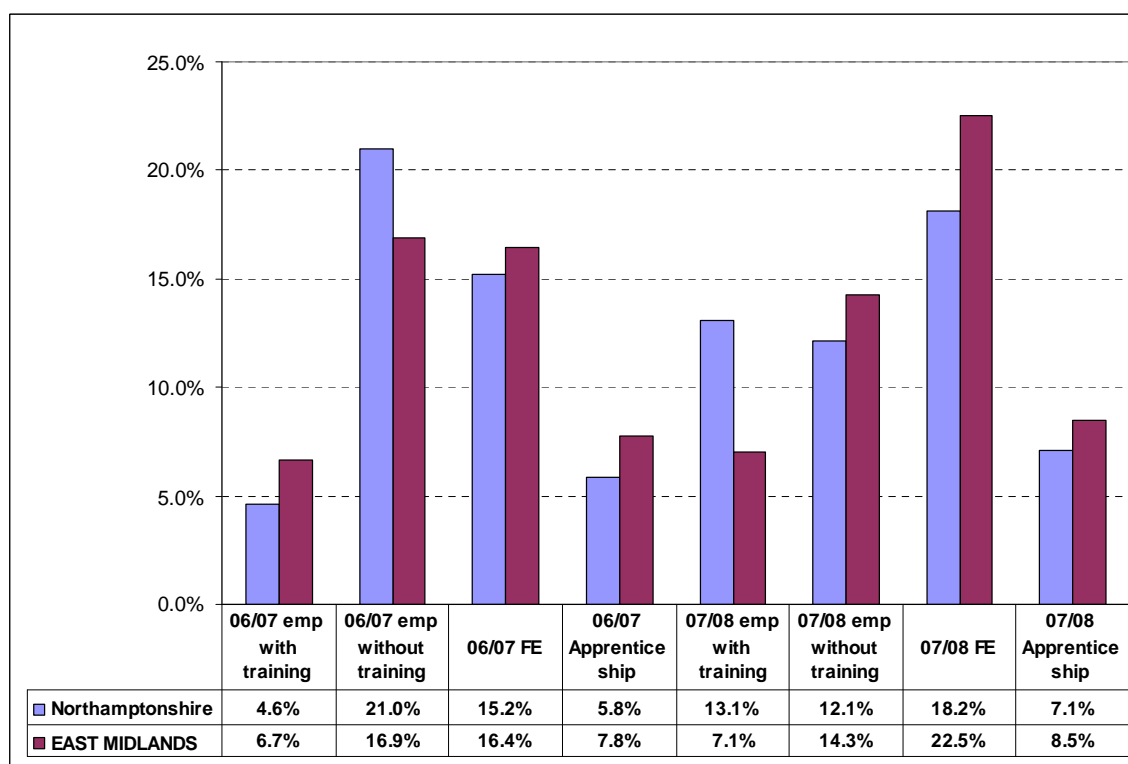
Table 15: E2E trends in Positive Outcomes: Overall Positive Outcomes, FE and Apprenticeships (App) 2006/07 – 2007/08: learners living in local authority areas

2006/07 - 2007/08 Summary	Positive outcomes									
	2006/07					2007/08				
	OVERALL	emp WITH training	emp WITHOUT training	FE	APP.	OVERALL	emp WITH training	emp WITHOUT training	FE	APP.
Derby City	229	21	69	101	38	219	20	50	122	27
Derbyshire	358	39	113	139	67	395	40	108	181	66
Leicester City	162	14	54	49	45	218	16	51	84	67
Leicestershire	162	44	52	44	22	196	27	61	79	29
Lincolnshire	309	77	115	82	35	311	35	120	129	27
NORTHAMPTONSHIRE	304	30	137	99	38	350	91	84	126	49
Nottingham City	104	15	29	51	9	124	23	26	58	17
Nottinghamshire	305	32	110	101	62	301	32	76	131	62
Rutland	9	0	7	2	0	1	1	0	0	0
EAST MIDLANDS	1942	272	686	668	316	2115	285	576	910	344

Source: ILR - WBL and E2E drill downs 2006/07 – 2007/08

- 37 A positive outcome from an E2E programme in LSC terms is a learner who progresses to either FE, Apprenticeship or 'other employment with training'. In LSC terms 'employment **without** training' is not a positive outcome, but for ease of reading the employment without training figures have been included in Table 15 above.
- 38 The number of overall positive outcomes from E2E learning amongst Northamptonshire's residents increased by 15% between 2006/07 and 2007/08. The proportion of Young People progressing into Apprenticeships increased from 13% to 14% over this period, whilst those going into FE rose by 3 percentage points. The proportion of young people leaving the programme to go to a job without training fell by 21 percentage points over this period. This compares favourably with the region where the proportion of young people going into Apprenticeships remained static, those going into FE rose by 9 percentage points and those leaving the programme to go to a job without training fell by 8 percentage points over this period.

Figure 3: Northamptonshire Learners - E2E trends in Positive Outcomes: Overall Positive Outcomes, FE and Apprenticeships (App) 2006/07 – 2007/08



Source: ILR - WBL and E2E drill downs 2006/07 – 2007/08

2008/09 – Latest position to January 2009

- 39 Table 16 presents the latest position (to January 2009) on E2E starts by learners living in local authority areas in the region.

Table 16: 2008/09 latest E2E Learner Starts – Learners Living in the East Midlands (includes provision contracted outside of the region)

Local Authority Area	2008/09 16-18 E2E Starts - latest to January 2009
Derby City	225
Derbyshire	590
Leicester City	124
Leicestershire	127
Lincolnshire	370
Northamptonshire	341
Nottingham City	202
Nottinghamshire	326
Rutland	4
East Midlands total	2309

Source: ILR - DASH 0809-0809 - E02 - Learner.xls

- 40 More detailed information on the latest picture will be available in the second phase of these packs.

September Guarantee

Table 17: September Guarantee status, 2008

	Y11 Guarantee				17 year old Guarantee			
	Offer made	Not ready for learning	No offer made	Not recorded	Offer made	Not ready for learning	No offer made	Not recorded
England	94.2%	2.9%	2.7%	0.2%	79.7%	9.6%	7.2%	3.4%
East Midlands	93.4%	5.1%	1.5%	0.0%	78.6%	16.8%	4.6%	0.0%
Derby City	93.0%	5.1%	1.9%	0.0%	78.2%	20.3%	1.5%	0.0%
Derbyshire	89.8%	8.4%	1.8%	0.0%	67.5%	30.7%	1.8%	0.0%
Leicester City	95.3%	3.4%	1.3%	0.0%	87.1%	8.7%	4.2%	0.0%
Leicestershire	95.3%	3.8%	0.8%	0.0%	88.7%	9.4%	1.9%	0.0%
Lincolnshire	94.5%	4.0%	1.5%	0.0%	73.7%	20.7%	5.6%	0.0%
Northamptonshire	92.5%	5.6%	1.9%	0.0%	65.8%	27.8%	6.4%	0.0%
Nottingham City	93.7%	4.1%	2.2%	0.0%	80.0%	13.2%	6.9%	0.0%
Nottinghamshire	93.9%	5.2%	0.9%	0.0%	78.2%	17.7%	4.1%	0.0%
Rutland	95.9%	2.5%	1.7%	0.0%	83.3%	16.7%	0.0%	0.0%

Source: Connexions via Department of Children Schools and Families NCCIS data system

- 41 In September 2008 Northamptonshire achieved offer levels of 92.5% and 65.8% for Year 11 and Year 12 respectively. For the Year 11 guarantee this is 1.0 percentage points (pp) and 1.7 pp below regional and national levels and 8th out of 9 LA's within East Midlands. For the Year 12 guarantee this is 12.8 pp and 13.9 pp below regional and national levels and is 9th out of 9 LA's within East Midlands.
- 42 For Year 11, of those without an offer 482 persons were recorded as 'Not ready for formal learning at this time' of which 401 were 'Going into employment without training to NVQ Level 2'. 163 were recorded as 'No offer Made', with 68 due to being 'Application awaiting outcome' and 58 being due to 'unable to contact'.

Travel to learn patterns

Further Education

- 43 89 per cent of Northamptonshire resident 16-18 FE learners were learning at an FE institution within the East Midlands. Some 910 residents access FE provision contracted outside of the region. This is usually due to proximity of institutions to the learner's place of residence, or proximity to parental work. In Table 18 below, the small numbers in distant regions – coded in yellow, are accessing provision from an institution whose home region is as indicated. Usually the institution makes local provision available. Learners do not travel to far flung parts of the country.

Table 18: 16-18 FE learners by LA of residence and region of FE institution, 2007/08

LA of learner residence	Region of FE institution									Total resident 16-18 learners
	East of England	East Midlands	Greater London	North East	North West	South East	South West	West Midlands	Yorkshire & Humberside	
Derby	4	3,305	3		5	3	4	246	5	3,575
Derbyshire	17	7,921	9	2	879	6	6	617	251	9,708
Leicester	6	6,784	8		10	3	1	32	6	6,850
Leicestershire	13	5,868	7		252	6	15	930	7	7,098
Lincolnshire	461	6,527	78	2	13	20	10	20	1,269	8,400
Northamptonshire	252	7,514	19		68	312	11	235	13	8,424
Nottingham	4	5,052	6		1	2		7	10	5,082
Nottinghamshire	30	9,370	16	2	12	8	13	41	210	9,702
Rutland	10	536			2	3	5	3	3	562
Unknown	7	201	1		8	1		6	13	237

Source: 2007/08 ILR F05 returns (FE 0506-0708 Learner Drill down)

- 44 Large numbers of Northamptonshire resident 16-18 learners who learn outside of the East Midlands go to the South East region, the East of England and the West Midlands to access their learning. The providers they go to include Bedford College (149 learners) and Peterborough College (52 learners), Oxford and Cherwell Valley College (221 learners) and Milton Keynes College (71) and in the West Midlands Warwickshire College (196 learners).

Table 19: Northamptonshire resident learners learning with East Midlands FE providers 2007/08

	Provider Name	Northamptonshire	
		Learner numbers	%
Derby City	Derby College	6	0.1
Derbyshire	South East Derbyshire College	1	0.01
	University of Derby, High Peak College	1	0.01
Leicester City	Leicester College	8	0.1
	Regent College	1	0.01
	Wyggeston and Queen Elizabeth I College	4	0.05
Leicestershire	Brooksby Melton College	2	0.02
	Leicestershire County Council	1	0.01
	Loughborough College	15	0.2
	South Leicestershire College	9	0.1
	Stephenson College	1	0.01
Lincolnshire	Stamford College	53	0.6
Northamptonshire	Northampton College	3,394	40.3
	Northamptonshire County Council	6	0.1
	Tresham Institute	2,668	31.7
	Moulton College F.E.C	1,334	15.8
Nottingham City	New College, Nottingham	2	0.02
	South Nottingham College	3	0.04
	Castle College, Nottingham	4	0.05
Rutland	Rutland County Council	1	0.01
East Midlands total		7514	89.2

Source: 2007/08 ILR F05 returns (FE 0506-0708 Learner Drill down)

- 45 Only 63 Northamptonshire resident learners access their learning outside of Northamptonshire in the East Midlands – this is less than one per cent of FE resident learners. Over 900 access learning outside of the East Midlands – this is 11 per cent of learners who find it easier to access training outside of the region.

School Sixth Forms

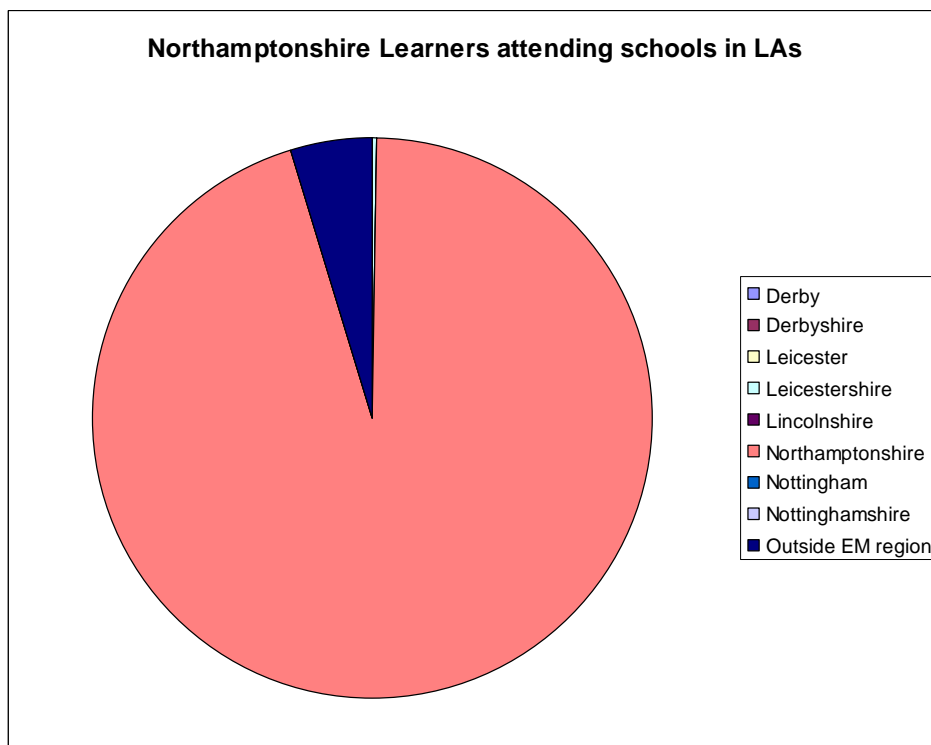
- 46 This section provides travel to learn patterns of School Sixth Form Learners living in Northamptonshire LA. The data has been extracted from the 2008/09 Schools Sixth Form Census.

Table 20: Schools Sixth Form Learners Travel to Learn patterns, 2008/09

	Northamptonshire LA	
	Number	%
Number of learners resident in LA	7430	100
Number of learners travelling to learn in:		
Derby	0	0
Derbyshire	0	0
Leicester	0	0
Leicestershire	22	0.3
Lincolnshire	1	0.0
Northamptonshire	7057	95.0
Nottingham	0	0.0
Nottinghamshire	0	0.0
Outside EM region	350	4.7

Source: Schools Sixth Form Census 2008/09

Figure 4: Schools Sixth Form Learners Travel to Learn patterns, 2008/09



Source: Schools Sixth Form Census 2008/09

18. The majority of Schools Sixth Form learners living in Northamptonshire LA attended a Schools Sixth Form in their locality (95%). Only 5% of learners travelled to Schools Sixth Forms outside of the area, including outside of the region (4.7%) and in Leicestershire (0.3%).

16-18 Resident Learner Achievement

FE Achievements

Table 21: Aims achieved by learners resident in East Midlands local authorities by level, 2006/07-2007/08

	2006					2007				
	Full Level 2 aims	% of aims at Full Level 2	Full Level 3 aims	% of aims at full Level 3	Total aims	Full Level 2 aims	% of aims at Full Level 2	Full Level 3 aims	% of aims at full Level 3	Total aims
Leicestershire	1,014	13.6%	600	8.1%	7,445	1,282	14.6%	973	11.1%	8,804
Leicester City	379	3.4%	120	1.1%	11,263	781	5.5%	403	2.8%	14,153
Northamptonshire	1,220	12.7%	875	9.1%	9,633	1,373	12.7%	1,055	9.8%	10,781
Derbyshire	1,643	11.0%	1,205	8.1%	14,956	1,653	10.6%	1,350	8.7%	15,566
Derby City	465	8.2%	322	5.7%	5,659	516	8.8%	330	5.7%	5,838
Lincolnshire	1,428	11.6%	960	7.8%	12,327	1,510	11.1%	1,177	8.7%	13,583
Rutland	48	4.8%	45	4.5%	1,006	66	5.1%	66	5.1%	1,303
Nottinghamshire	1,377	9.6%	993	6.9%	14,363	1,661	10.1%	1,190	7.2%	16,484
Nottingham City	602	7.3%	310	3.8%	8,260	634	7.0%	429	4.8%	9,014
East Midlands	8176	9.6%	5,430	6.4%	84,912	9,476	9.9%	6,973	7.3%	95,526

Source: 2007/08 ILR F05 returns (FE 0506-0708 Success rates Drill down)

47 Table 21 shows the proportions of curriculum study at different levels taken by Northamptonshire residents. The count is by learning aim. An individual may be studying a range of learning aims at more than one level. So these figures do not equate to learners, but to enrolments at a particular level on a particular course. The count also only relates to those achieving at **Full** Level 2 or 3. There will be a large number of enrolments on courses that are at Level 2 and 3 but where the total learning aims studied do not amount to a **Full** Level 2 or 2. This explains the relatively low proportions of achievements.

Apprenticeship Achievement

48 Table 22 below shows the number of full Apprenticeship Frameworks achieved by Northamptonshire learner residents. In LSC terms, an Apprenticeship is only achieved if the learner leaves with the full framework completed, including all the key skills and technical certificates in that particular framework. Several apprentices achieve only an NVQ, because their employer often does not see the benefit in the learner taking the other elements of the programme. Those learners are not included in the table below.

Table 22: 16-18 Apprenticeship Framework Completions by Achievement and Programme Level, 2006/07 – 2007/08

Year	Programme Level	Northamptonshire	East Midlands
2006/07	Apprenticeship	713	4,777
	Advanced Apprenticeship	205	1,520
	Total	918	6,297
2007/08	Apprenticeship	742	4,443
	Advanced Apprenticeship	160	1,483
	Total	902	5,926
2006/07 - 2007/08 % change	Apprenticeship	4.1	-7.0
	Advanced Apprenticeship	-22.0	-2.4
	Total	-1.7	-5.9

Source: ILR - WBL AND E2E DRILL DOWNS 2006/07 and 2007/08 (July 2007 and July 2008) Completions data

- 49 There has been a reduction in the number of Apprenticeship Frameworks completed and achieved by Northamptonshire resident learners in 2007/08 compared to 2006/07 (-1.7%). The reduction in Advanced Apprenticeships (-22%) contributed to this overall reduction as the number of Apprenticeship completions had actually increased (4.1%).
- 50 This overall reduction was reflected in the East Midlands, though the decrease for Northamptonshire residents was below the regional average.

School Sixth Forms

- 51 Table 23 below indicates, there has been a considerable rise in the average point score of those learners achieving 'A'-Level grades in Northamptonshire between 2002 and 2006. This increase compares favourably with that in the region (30) but was lower than the national increase (35). Out of the nine local authorities, Northamptonshire had the second highest increase in the region.

Table 23: Average A-level point score for candidates and entry by East Midlands local authority

	Per candidate			Per Entry		
	2002	2006	Difference	2002	2006	Difference
Derby LA	237	256.1(r)	19.1	73	77.2(r)	4.2
Derbyshire LA	265.2	281.8(r)	16.6	75.3	76.9(r)	1.6
Leicester LA	211.7	243.4(r)	31.7	67.9	72.8(r)	4.9
Leicestershire LA	247.8	277.4(r)	29.6	72.9	74.1(r)	1.2
Lincolnshire LA	275.3	304.6(r)	29.3	76.6	79.1(r)	2.5
Northamptonshire LA	236.4	268.2(r)	31.8	71.8	75.6(r)	3.8
Nottingham LA	222.6	296.2(r)	73.6	70.9	77.1(r)	6.2
Nottinghamshire	234.4	260.3(r)	25.9	69.4	71.4(r)	2
Rutland LA(r)(r)	..
East Midlands	245.5	275.8(r)	30.3	72.6	75.4(r)	2.8
England	254.7	289.5(r)	34.8	76	80.2(r)	4.2

Source: DCSF, (http://www.dcsf.gov.uk/inyourarea/statics/gor_E_12.shtml)

Part 2 - Progress to PSA targets at 19

52 The position of learners at age 19 in terms of the PSA target in any local authority is strongly influenced by the achievements in that local authority's schools at 16. These figures are shown in Table 24 below.

Table 24: GCSE achievements by 15 year old pupils in the East Midlands, 2007/08

	Number of 15 year old pupils			% achieving 5 A*-C grade GCSEs			% achieving 5 A*-C grades, incl. English and Maths		
	Boys	Girls	Total	Boys	Girls	Total	Boys	Girls	Total
East Midlands	27,381	26,160	53,541	58.4	67.2	62.7	43.2	50.5	46.8
Derby	1,540	1,519	3,059	63.2	63.9	63.6	46.8	51.9	49.3
Derbyshire	4,747	4,614	9,361	57.7	68.1	62.8	44.0	52.4	48.2
Leicester	1,835	1,639	3,474	52.2	58.9	55.3	37.1	42.7	39.7
Leicestershire	3,996	3,707	7,703	59.2	69.8	64.3	48.3	55.3	51.7
Lincolnshire	4,297	4,213	8,510	67.1	74.0	70.5	48.9	55.6	52.2
Northamptonshire	4,321	4,088	8,409	55.0	63.7	59.2	41.1	49.4	45.1
Nottingham	1,444	1,436	2,880	54.5	61.9	58.2	31.6	37.0	34.3
Nottinghamshire	4,963	4,717	9,680	55.5	66.5	60.9	38.9	47.4	43.0
Rutland	238	227	465	69.7	71.8	70.8	58.8	58.6	58.7
England	334,579	319,229	653,808	60.4	69.4	64.8	42.9	51.9	47.3

Source: DCSF, (<http://www.dcsf.gov.uk/rsgateway/DB/SFR/s000826/index.shtml>, Table 18a)

53 The proportion of young people in the East Midlands achieving 5 GCSEs A*-C (the equivalent of a level 2) remains below the national average.

54 Achievement by boys remains considerably lower than girls in most areas.

Table 25: Achievement of Level 2 by age 19: Northamptonshire. Trend data from 2003/4 to 2008/09

	Aged 19 at the end of 2003/04	Aged 19 at the end of 2004/05	Aged 19 at the end of 2005/06	Aged 19 at the end of 2006/07	Aged 19 at the end of 2007/08	Aged 19 at the end of 2008/09	Aged 19 at the end of 2009/10
LEA Name	by age 19	by age 19	by age 19	by age 19	by age 19	by age 18	by age 17
Derbyshire	65.7%	68.8%	69.4%	72.4%	73.6%	71.7%	65.0%
Derby	57.3%	59.1%	61.6%	64.1%	67.8%	65.9%	60.3%
Leicestershire	67.0%	72.3%	73.0%	73.9%	75.6%	74.4%	68.4%
Leicester	58.9%	63.0%	65.2%	66.7%	71.0%	67.6%	63.1%
Rutland	76.0%	81.8%	82.0%	80.4%	87.3%	83.4%	81.3%
Lincolnshire	65.6%	68.4%	71.0%	73.1%	74.0%	73.8%	68.5%
Northamptonshire	62.7%	66.5%	67.6%	70.1%	71.4%	70.8%	62.9%
Nottinghamshire	59.2%	62.5%	64.4%	66.8%	68.6%	66.4%	60.2%
Nottingham	50.2%	53.5%	55.3%	57.2%	62.8%	59.9%	55.0%
East Midlands	63.2%	66.9%	68.8%	71.4%	73.1%	70.7%	64.3%
England	66.3%	69.2%	71.4%	74.0%	76.7%	74.8%	67.9%

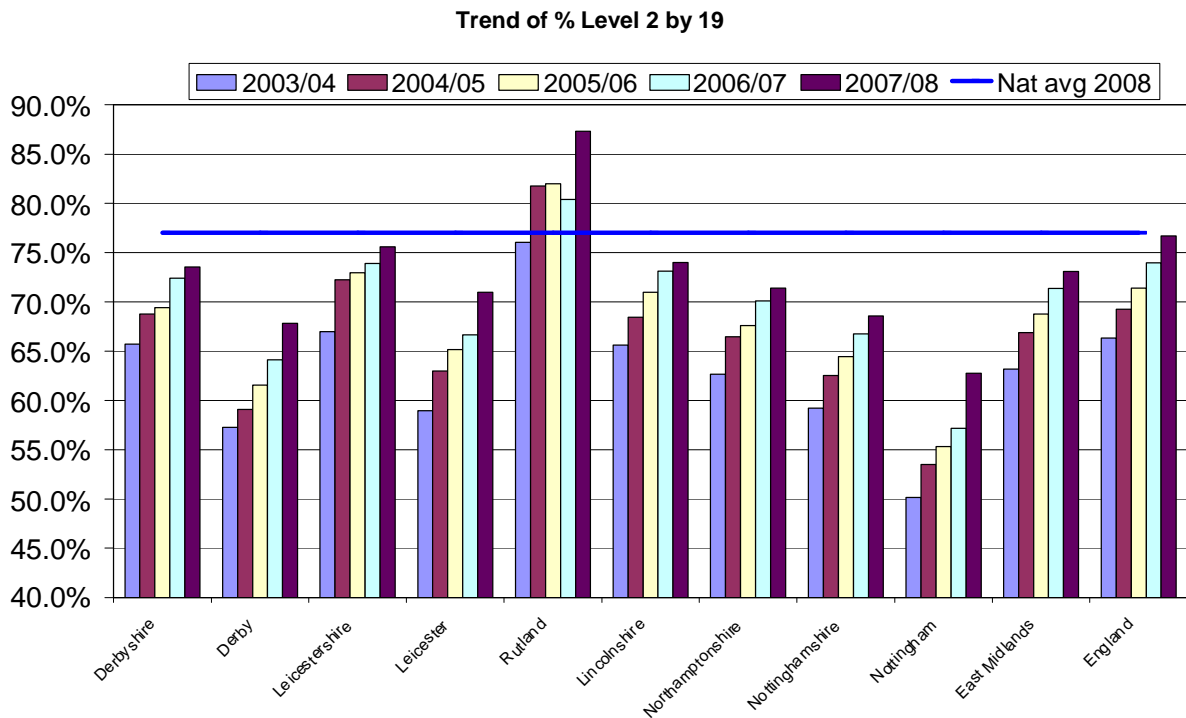
Source: DCSF Website: *Level2andlevel3attainmentin each LEAApr2009.xls*

55 For levels 2 at 19¹⁸ (PSA Target) the results for the cohort who reach 19 in 2007/08 was 71.4%. This is -1.7 pp and -5.3 pp below East Midlands and All England averages.

For Level 2, comparing improvement between 2003/04 and 2007/08, Northamptonshire has increased by 8.7 pp, however East Midlands and All England averages have increase by 8.7 pp and 10.4 pp respectively.

For In order to reduce the gaps to regional and national figures Northamptonshire will need to exceed the future improvement rates in these areas.

Figure 5: Trends in Level 2 by age 19 by Local Authority Learners



Source: DCSF Website: *Level2andlevel3attainmentin each LEAApr2009.xls*

¹⁸ Administrative Data Set 2007/08

Table 26: Achievement Level 3 by age 19: Northamptonshire. Trend data from 2003/04 to 2008/09

	19 in 2003/04	29 in 2004/05	19 in 2005/06	19 in 2006/07	19 in 2007/08	Aged 19 in 2008/09	Aged 19 in 2009/10
Region	by age 19	by age 19	by age 19	by age 19	by age 19	by age 18	by age 17
Derbyshire	39.2%	43.9%	43.3%	45.5%	47.0%	41.7%	16.8%
Derby	31.9%	36.5%	38.6%	37.6%	40.5%	35.2%	7.5%
Leicestershire	44.0%	48.4%	49.0%	48.6%	49.7%	45.7%	24.0%
Leicester	39.5%	44.4%	45.3%	42.7%	47.1%	37.9%	18.5%
Rutland	51.7%	58.9%	62.4%	63.6%	70.1%	61.2%	13.1%
Lincolnshire	40.3%	43.9%	45.5%	47.2%	47.6%	42.7%	15.8%
Northamptonshire	39.3%	41.4%	42.4%	43.8%	43.6%	40.3%	14.5%
Nottinghamshire	34.6%	37.5%	39.6%	39.6%	40.7%	35.6%	16.1%
Nottingham	30.0%	33.7%	34.5%	34.0%	37.5%	32.7%	12.1%
East Midlands	38.8%	42.8%	44.2%	44.6%	46.0%	40.6%	16.3%
England	42.0%	45.4%	46.7%	48.1%	49.8%	43.4%	16.9%

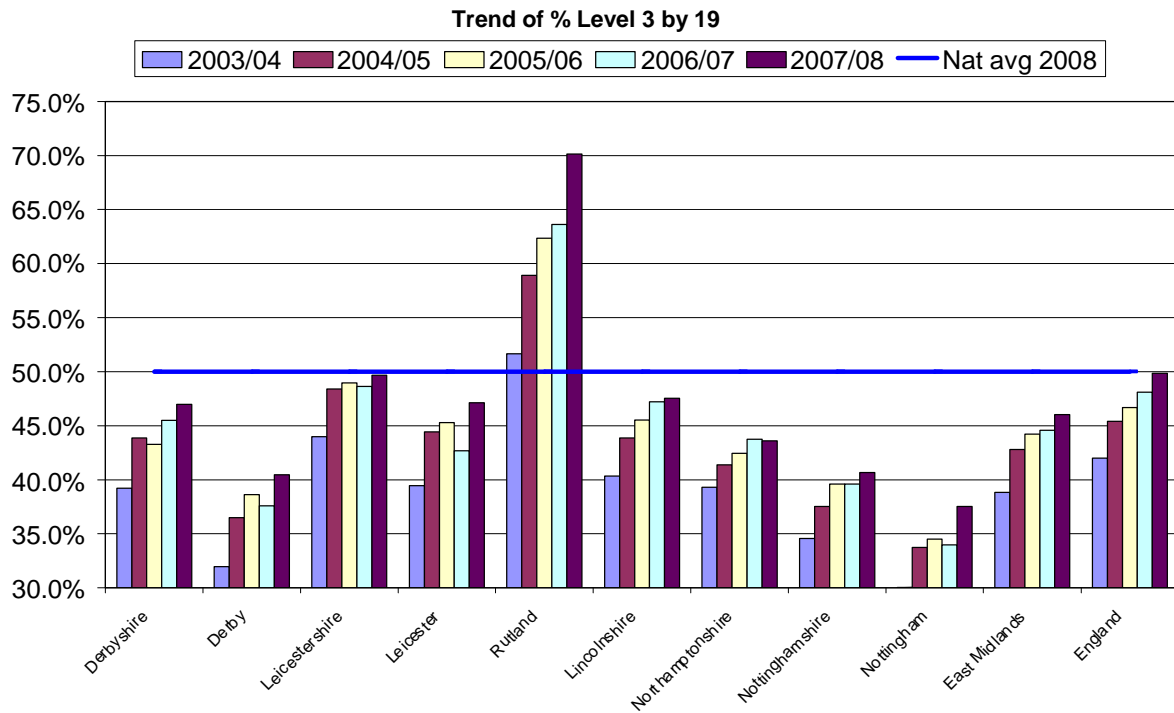
Source: DCSF Website: *Level2andlevel3attainmentin each LEApr2009.xls*

56 For Level 3 at 19¹⁹ (PSA Target) the results for the cohort who reach 19 in 2007/08 was 43.6%. For Level 3 this is -2.4 pp and -6.2 pp below East Midlands and All England averages.

For Level 3, comparing improvement between 2003/04 and 2007/08 Northamptonshire, has increased by 4.3 pp, however East Midlands and All England averages have increase by 7.2 pp and 7.8 pp respectively. In order to reduce the gaps to regional and national figures Northamptonshire will need to exceed the future improvement rates in these areas.

¹⁹ Administrative Data Set 2007/08

Figure 6: Percentage of young people with a Level 3 by age 19 in the East Midlands



Source: DCSF Website: *Level2andlevel3attainmentin each LEAApr2009.xls*

Part 3 - Provision within Northamptonshire

57 This section is intended to show how post-16 providers (excluding those for Apprenticeships) are delivering against their contracts and the quality of their delivery. . It is important information for planning the number of commissioned places in 2010/1011, since learning places will need to be planned for all those who choose to learn within Northamptonshire's institutions.

Further Education providers

FE Participation

Table 27: Number of 16-18 FE learners by level for each provider in Northamptonshire LSC, 2006/07-2008/09

Provider Name	2006/07					2007/08				
	Full Level 2	%	Full Level 3	%	Total Learners	Full Level 2	%	Full Level 3	%	Total Learners
Northampton College	926	25.7	1,399	38.9	3,598	910	25.4	1,298	36.3	3,580
Northamptonshire County Council	-	-	-	-	9	0	0	0	0	6
Tresham Institute	664	22.7	650	22.2	2,927	566	17.6	688	21.3	3,224
Moulton College F.E.C	630	39.1	215	13.3	1,612	695	40.8	324	19	1,703
Northamptonshire Total	2,220	27.3	2,264	27.8	8,146	2,171	25.5	2,310	27.1	8,513
East Midlands Total	12,662	23.7	18,559	34.7	53,446	12,724	22.6	20,188	35.9	56,249

Provider Name	2008/09				
	Full Level 2	%	Full Level 3	%	Total Learners
Northampton College	1,016	27.6	1,160	31.5	3,687
Northamptonshire County Council	-	-	-	-	-
Tresham Institute	556	20.8	464	17.3	2,678
Moulton College F.E.C	614	30.3	374	18.5	2,025
Northamptonshire Total	2,186	26.1	1,998	23.8	8,390
East Midlands Total	12,951	23.1	21,755	38.9	55,980

Sources: FE Learners Full Level 2 and Full Level 3 Drill Down 2005-06 - 2007/08 and 08/09 data - Dashboard 0809-0809 - LR FE - Learner.xls

NB: Total Learners also includes learners who are not undertaking L2/L3 qualifications

- 58 Northampton College, Tresham Institute and Moulton College are the main FE delivery providers funded by Northamptonshire LSC.
- 59 Across the different Providers, the proportional split between the level of qualifications that learners are undertaking varies both between Providers and from year to year from 2006/07 – 2008/09.

Table 28: Number of 16-18 FE learners by provider in Northamptonshire with a learning difficulty and/or disability (LLDD), 2007/08

LA	Provider	LLDD	
Northamptonshire	Learner numbers	No.	% of LLDD with each Provider
	Northampton College	435	12.1
	Northamptonshire County Council	3	50.0
	Tresham Institute	476	14.7
	Moulton College F.E.C	268	15.7
Northamptonshire total – Overall Providers		1,182	13.9

Source: 2007/08 ILR F05 returns (FE 0506-0708 Learner Drill down)

- 60 In terms of volume and proportion, Tresham Institute had a highest proportion of learners with learning difficulties and/or disabilities in 2007/08 compared to other FE providers in Northamptonshire local authority Area funded by Northamptonshire LSC. Northamptonshire FE providers were below the regional average of 16.5%.
- 61 Northamptonshire County Council had a very low volume of learners but 50% were LLDD.

Table 29: Numbers of East Midlands 16-18 FE learners by their district of residence by provider in Northamptonshire, 2007/08

LA of provider		Derby City	Derbyshire	Leicester City	Leicestershire	Lincolnshire	Northamptonshire	Nottingham City	Nottinghamshire	Rutland	blank	Total East Midlands learners	Learners from outside of East Midlands	Full Total of learners
	Northampton College				14		3,393		9	1	23	3,440	140	3,580
	Northamptonshire County Council						6					6	0	6
	Tresham Institute		2	25	137	92	2,667		1	203	28	3,155	69	3,224
	Moulton College F.E.C			3	40	5	1,334	1		2	4	1,389	314	1,703
	Northamptonshire Total		2	28	191	97	7,400	1	10	206	55	7,990	523	8,513

Source: 2007/08 ILR F05 returns (FE 0506-0708 Learner Drill down)

Table 30: Percentage of East Midlands 16-18 FE learners by their district of residence by provider in Northamptonshire, 2007/08

LA of provider		Derby City	Derbyshire	Leicester City	Leicestershire	Lincolnshire	Northamptonshire	Nottingham City	Nottinghamshire	Rutland	blank	Total East Midlands learners	Learners from outside of East Midlands	Full Total of learners
	Northampton College	0.0	0.0	0.0	0.4	0.0	94.8	0.0	0.3	0.0	0.6	96.1	3.9	100.0
	Northamptonshire County Council	0.0	0.0	0.0	0.0	0.0	100.0	0.0	0.0	0.0	0.0	100.0	0.0	100.0
	Tresham Institute	0.0	0.1	0.8	4.2	2.9	82.7	0.0	0.0	6.3	0.9	97.9	2.1	100.0
	Moulton College F.E.C	0.0	0.0	0.2	2.3	0.3	78.3	0.1	0.0	0.1	0.2	81.6	18.4	100.0
	Northamptonshire provider total	0.0	0.0	0.4	2.4	1.1	86.9	0.0	0.1	2.4	0.6	93.9	6.1	100

Source: 2007/08 ILR F05 returns (FE 0506-0708 Learner Drill down)

Table 31: Numbers of 16-18 FE learners by region of residence for providers in Northamptonshire 2007/08

	Northampton College		Northamptonshire County Council		Tresham Institute		Moulton College F.E.C		Northamptonshire provider total	
	No.	%	No.	%	No.	%	No.	%	No.	%
East of England	14	0.4		0.0	29	0.9	81	4.8	124	1.5
East Midlands	3,440	96.1	6	100	3,155	97.9	1,389	81.6	7,990	93.9
Greater London		0.0		0.0	1	0.0	7	0.4	8	0.1
North East		0.0		0.0	1	0.0	1	0.1	2	0.0
North West		0.0		0.0	1	0.0	1	0.1	2	0.0
South East	78	2.2		0.0	13	0.4	205	12.0	296	3.5
South West		0.0		0.0	1	0.0	1	0.1	2	0.0
West Midlands	14	0.4		0.0	3	0.1	6	0.4	23	0.3
Yorkshire & Humberside		0.0		0.0	6	0.2	1	0.1	7	0.1
Unknown	34	0.9			14	0.4	11	0.6	59	0.7
Total Learners	3,580	100	6	100	3224	100	1703	100	8513	100

Source: 2007/08 ILR F05 returns (FE 0506-0708 Learner Drill down)

FE Achievements

Table 32: Success rates of Northamptonshire FE providers 2006/07

	2006/07					
	Full level 2		Full Level 3		Total	
	Achievements	Success rate	Achievements	Success rate	Achievements	Success rate
Moulton College F.E.C	296	70.3%	201	87.0%	2,759	91.9%
Northampton College	514	66.4%	474	64.7%	3,659	69.1%
Northamptonshire County Council					14	87.5%
Tresham Institute	388	67.5%	182	60.9%	3,791	75.1%
East Midlands Average	7,587	69.6%	4,905	64.3%	79,184	75.8%

Source: ILR - EM-FE Success Rates-Detail- 0506-0708.xls

Table 33: Success rates of Northamptonshire FE providers 2007/08

	2007/08					
	Full level 2		Full Level 3		Total	
	Achievements	Success rate	Achievements	Success rate	Achievements	Success rate
Moulton College F.E.C	318	74.1%	289	89.8%	2,867	92.6%
Northampton College	545	71.8%	536	69.6%	3,920	74.8%
Northamptonshire County Council					5	71.4%
Tresham Institute	482	73.3%	219	70.4%	4,564	79.8%
East Midlands Average	9,050	74.0%	6,638	74.0%	90,116	78.9%

Source: ILR - EM-FE Success Rates-Detail- 0506-0708.xls

62 All major FE providers in Northamptonshire have improved 'Full Level 2', 'Full Level 3' and Overall success rates between 2006/07 and 2007/08.

FE Funding

63 In 2008/09, the LSC introduced its new Demand Led Funding methodology and this was applied to the allocations process for funding FE provision in that year. For this reason, direct comparisons are not possible between 2007/08 funding levels and those in 2008/09. Further information about the Demand Led Funding methodology is available via the LSC web site (<http://www.lsc.gov.uk/providers/funding-policy/demand-led-funding/>).

Table 34: Changes to Funding for 16-18 FE

Provider	2006/07		2007/08		*2008/09
	£	% Change from previous year	£	% Change from previous year	£
Northampton College	£13,424,341	6.7%	£13,694,876	2.0%	£14,015,047
Northamptonshire County Council	£4,200	223.3%	£1,093	-74.0%	£0
Tresham Institute	£9,245,132	10.7%	£10,247,698	10.8%	£10,669,818
Moulton College F.E.C	£9,551,573	25.3%	£10,600,467	11.0%	£10,405,670
Northamptonshire LA	£32,225,246	12.8%	£34,544,134	7.2%	£35,090,535

Source: 2007/08 ILR F05 returns (FE 0506-0708 Learner Drill down) & *2008/09 Funding Allocation

School Sixth Forms

S6F Participation

Table 35: Numbers of Year 12-14 students in Northamptonshire School Sixth Forms, 2005/06-2008/09

	2005/06	2006/07	2007/08	2008/09
Sponne School Technology College	199	196	190	198
Caroline Chisholm School	0	0	105	212
Montsaye Community College	138	134	143	162
Huxlow Science College	70	91	76	89
Ise Community College	112	140	121	137
Moulton School and Science College	198	209	222	279
Road School Sports College	214	292	199	172
Wollaston School	184	167	160	164
Kingsbrook School	146	163	158	144
Guilsborough School	254	230	233	217
Campion School	274	277	301	302
Prince William School	266	284	294	292
The Latimer Arts College	160	147	138	154
The Duston School	128	143	172	185
Mereway Community College	140	149	136	182
Kingsthorpe Community College	184	195	196	165
Northampton School for Girls	309	296	320	365
Chenderit School	180	215	249	274
The Ferrers Specialist Arts College	132	147	162	186
The Rushden Community College Specialising in Mathematics and Computing	106	124	115	135
Magdalen College School	254	297	268	295
Bishop Stopford School	365	363	390	390
Thomas Becket Catholic School	125	104	115	140
Southfield School for Girls	136	133	123	147
The Kingswood School	177	183	181	224
Northampton School for Boys	413	422	407	423
Lodge Park Technology College	159	174	182	213
Manor School and Sports College	75	85	135	178
Montagu School	104	89	85	105
Weavers School	78	80	67	82
Sir Christopher Hatton School	158	144	130	127
Wrenn School	182	189	210	254
Weston Favell School				143
Unity College				84

Source: School Sixth Form Census Data

S6F Achievement

Table 36: A Level Achievement in School Sixth Forms: Northamptonshire

	Average point score per student			Average point score per examination entry		
	2006	2007	2008	2006	2007	2008
Local Authority Average	663.7	673	673.3	198.4	198.9	200.1
LSC Average	663.7	673	673.3	198.4	198.9	200.1
England Average	721.5	731.2	740	206.2	207.5	209.4
Abbeyfield School	618	569.3	599.3	175.6	183	182.6
Bishop Stopford School	826.4	750.4	718.5	228.1	217.1	219.6
Bosworth Independent College	875.1	834.3	913.5	239.4	236.3	241.4
Brooke Weston Academy	Not Applicable. School opened after January 2008					
Brooke Weston CTC (closed)	740.1	785	771.6	206.5	207.6	210.6
Campion School	898.6	884.2	899	216.4	210.3	213.5
Caroline Chisholm School	N/A	N/A	-	N/A	N/A	-
Chenderit School	666.3	711.4	689.1	205	209.8	203.3
Corby Business Academy	Not Applicable. School opened after January 2008					
Corby Community College (closed)	<	417	323.1	<	162.5	158.5
Danetre School	N/A	N/A	-	N/A	N/A	-
The Duston School	586.1	604.8	681.5	178.4	183.5	186
The Ferrers Specialist Arts College	887.8	842.5	847.6	203.6	189.6	190.7
Guilsborouh School	729.3	725.5	768.8	207.4	204.6	217.5
Huxlow Science College	748.9	705	761	199.7	180	182.6
Ise Community College	401.5	482.4	507.7	206.7	199.4	186.8
Kingsbrook Specialist Business & Enterprise College	653.8	752.6	609.6	200.6	195.8	185.5
Kingsthorpe College	716.1	654.4	720.6	192.3	174.3	176.1
The Kingswood School	597.6	525.2	565.9	177.2	164.7	187
The Latimer Arts College	709.7	634	633.2	197	182.4	178.6
Lodge Park Technology College	594	686.9	685.1	193.1	181.2	180.3
Magdalen College School	701	660.9	672.4	202.1	196.1	200.5
Manor School and Sports College	762.1	774.2	692.5	184	179.8	174.9
Montagu School	505.4	559.4	668	154.6	172.9	190
Montsaye Community College	651.7	661.9	683.2	203.4	204.3	204.5
Moulton College	442.9	471.9	497.7	191.8	194.2	203.1
Moulton School and Science College	886.4	901.6	795.2	201.9	208.2	195
Northampton Academy	763.2	664.7	713.7	183.8	173	173.1
Northampton College	537.1	576	569.2	191.2	199.1	200.4
Northampton High School	1043.9	1035.8	1021.3	245.6	240.3	243.5
Northampton School for Boys	882.6	1014.5	960.8	219.5	227.1	215.4
Northampton School for Girls	744.2	741.8	764.2	198.9	201.4	202.6
Northamptonshire Grammar School	839.4	902.8	895.5	189.7	220.4	218.9
Oundle School	950.4	968	971.4	248.8	252.9	251.6
Prince William School	707.4	684.4	699.7	210.1	206	212.8
Quinton House School	808.9	<	670.2	205.9	<	171.5
Roade School Sports College	786.6	652	671	190.8	202.9	202.7
The Rushden Community College Specialising in Mathematics and Computing	766.4	802.7	824.1	190	194.4	207.5
Sir Christopher Hatton School	702	708.5	723	208.2	197.3	193.3
Southfield School for Girls	643	704.2	725.7	201.2	211.6	219.3

Sponne School Technology College	716.9	675.9	729.1	210	207.7	215.3
Thomas Becket Catholic School	546.7	469.2	493.6	172.3	147.9	163.9
Tresham Institute	574.9	595.9	560.8	194.6	196.4	195.8
Unity College	<	478.3	542.5	<	168.8	180.8
Weavers School	561.3	550.8	540	168.1	178.6	182.9
Wellingborough School	795.2	795	818.4	230.2	232	230.3
Weston Favell School	596.6	641.8	662.1	161.2	182.8	185.8
Wollaston School	737.3	848.9	874.5	194.8	201.2	208.3
Wren Spinney Community Special School	N/A	N/A	-	N/A	N/A	-
Wrenn School	795.6	814.2	835.4	188.6	189.6	201.6

Source: DCSF School Performance Tables

S6F Funding

- 64 Only 2008/09 funding information is available at this time. More detail, including 2009/10 funding allocations figures will be available in the next phase of the reports.

Table 37: 2008/09 School Sixth Form funding in Northamptonshire

	2008/09
Provider	16-18
Bishop Stopford School	£1,879,595
Campion School	£1,450,374
Caroline Chisholm School	£1,015,520
Chenderit School	£1,271,064
Guilsborough School	£1,173,204
Huxlow Science College	£406,428
Ise Community College	£623,033
Kingsbrook School	£792,340
Kingsthorpe Community College	£1,095,462
Lodge Park Technology College	£1,058,670
Magdalen College School	£1,266,259
Manor School and Sports College	£690,562
Mereway Community College	£599,466
Montagu School	£421,088
Montsaye Community College	£702,354
Moulton School and Community College	£1,045,808
Northampton School for Boys	£1,971,065
Northampton School for Girls	£1,627,114
Prince William School	£1,359,672
Roade School Sports College	£931,336
Sir Christopher Hatton School	£667,146
Southfield School for Girls	£542,377
Sponne School Technology College	£955,815
The Duston School	£942,719
The Ferrers Specialist Arts College	£944,611
The Kingswood School	£1,065,809
The Latimer Arts College	£652,999
The Rushden Community College	£655,577
Thomas Becket Catholic School	£567,808
Unity College	£524,852
Weavers School	£448,933
Weston Favell School	£851,601
Wollaston School	£774,782
Wren School	£1,166,901
Northamptonshire Total	£32,142,344

Source: 2008/09 LSC School Sixth Form funding allocations

Apprenticeship Providers

65 This section provides information on the number of learners participating on Apprenticeships within the Northamptonshire area and the Providers funded to deliver that learning. The data presents detailed information about those Providers that are funded by Northamptonshire LSC. However, some of these Providers may not *deliver* the learning in the Northamptonshire area and due to the complexities in how this data is constructed it is not possible at this stage to provide a breakdown of the delivery location of each Provider for individual learners.

Apprenticeship Participation

Table 38: Number of 16-18 learners undertaking Apprenticeships with Providers funded by Northamptonshire LSC, 2007/08

Providers	2007/08				
	Apprenticeship		Advanced Apprenticeship		Total
	No.	%	No.	%	
A4e Ltd	2	0.1	0	0.1	2
Aston Recruitment & Training Limited	103	8.1	7	2	110
Carter & Carter Group Plc	4	0.3	0	0	4
Constant Browning Edmonds Limited	17	1.3	2	0.6	19
In Training (CBB) Ltd	3	0.2	0	0.1	3
Intec Business Colleges Plc	9	0.7	1	0.2	10
JHP Group Limited	4	0.3	1	0.2	5
Kettering Borough Council	57	4.5	36	10	93
Key Training Limited	26	2	1	0.1	26
Leicestershire Engineering Training Group Limited	1	0.1	0	0	1
Moulton College	326	25.8	82	22.9	409
Northampton College	172	13.6	54	15	226
Northamptonshire Industrial Training Association Limited	40	3.2	40	11.2	80
Protocol Skills Limited	31	2.4	3	0.9	34
Rathbone Training	25	1.9	0	0	25
South Leicestershire College	3	0.2	0	0	3
Starting Off (Kettering) Ltd.	94	7.4	11	3.2	105
TNG Network Limited	9	0.7	5	1.3	14
Tresham Institute	165	13.1	61	17.1	227
Triangle Training Ltd	120	9.5	49	13.7	169
VT Training Plc	47	3.7	4	1.1	51
YMCA Training	7	0.5	1	0.3	8
Provider – Northamptonshire LSC Total	1265	100	359	100	1624

Source: ILR - WBL and E2E 2007/08 Drill Downs, 'In Learning' Data. NB: The data shows an average of learners undertaking an Apprenticeship in a given month over a 12 month period.

Table 39: Number of 16-18 learners undertaking Apprenticeships with Providers funded by Derbyshire LSC, 2007/08

Providers	2008/09				
	Apprenticeship		Advanced Apprenticeship		Total
	No.	%	No.	%	
A4e Ltd	3	0.3	1	0.4	5
Aston Recruitment & Training Limited	100	9.5	7	2.1	107
Carter & Carter Group Plc	-	-	-	-	-
Constant Browning Edmonds Limited	-	-	-	-	-
In Training (CBB) Ltd	6	0.5	1	0.3	7
Intec Business Colleges Plc	8	0.8	2	0.4	10
JHP Group Limited	14	1.4	4	1.2	19
Kettering Borough Council	41	3.9	30	8.4	70
Key Training Limited	17	1.6	1	0.2	18
Leicestershire Engineering Training Group Limited	-	-	-	-	-
Moulton College	286	27.2	76	21.6	362
Northampton College	167	15.8	59	16.8	226
Northamptonshire Industrial Training Association Limited	31	3	32	9.2	64
Protocol Skills Limited	30	2.8	1	0.2	31
Rathbone Training	-	-	-	-	-
South Leicestershire College	-	-	-	-	-
Starting Off (Kettering) Ltd.	74	7.1	8	2.3	82
TNG Network Limited	0	0	2	0.5	2
Tresham Institute	157	14.9	64	18.1	221
Triangle Training Ltd	116	11	60	17.2	176
VT Training Plc	-	-	-	-	-
YMCA Training	3	0.3	4	1.1	7
Provider – Northamptonshire LSC Total	1052	100	352	100	1404

Source: ILR - Employer Responsive Drill Downs 2008/09, Period 8 (March 2009), NB: The data shows an average of learners undertaking an Apprenticeship in a given month over a 12 month period.

66 Moulton College, Northampton College, Tresham Institute and Triangle Training Ltd were some of the main Providers for Apprenticeships funded by Northamptonshire LSC

67 The table below provides a breakdown of Providers funded by Northamptonshire LSC in 2007/08 that had learners with learning difficulties and/or disabilities undertaking Apprenticeships.

Table 40: Number of 16-18 Apprenticeship learners with a learning difficulty and/or disability (LLDD), by Providers funded by Northamptonshire LSC, 2007/08

Provider	2007/08 - LLLD	
	No.	%
A4e Ltd	0	0.0
Aston Recruitment & Training Limited	17	12.1
Carter & Carter Group Plc	0	0.2
Constant Browning Edmonds Limited	6	4.5
In Training (CBE) Ltd	1	1.0
Intec Business Colleges Plc	0	0.0
JHP Group Limited	0	0.0
Kettering Borough Council	8	6.0
Key Training Limited	3	2.3
Leicestershire Engineering Training Group Limited	0	0.0
Moulton College	22	16.1
Northampton College	16	11.5
Northamptonshire Industrial Training Association Limited	11	8.1
Protocol Skills Limited	2	1.1
Rathbone Training	1	1.0
South Leicestershire College	0	0.3
Starting Off (Kettering) Ltd.	16	12.1
TNG Network Limited	0	0.1
Tresham Institute	11	8.1
Triangle Training Ltd	20	14.6
VT Training Plc	1	0.9
YMCA Training	0	0.0
Provider – Northamptonshire LSC Total	136	100.0

Source: Source: ILR - WBL and E2E 2007/08 Drill Downs, 'In Learning' Data

NB: The data shows an average of learners over a 12 month period undertaking an Apprenticeship

68 Providers with the higher proportion of learners with learning difficulties and/or disabilities are: Moulton College, Triangle Training LTD and Starting Off (Kettering) and Aston Recruitment and Training Ltd.

Apprenticeship Achievement

69 The table below presents overall 2007/08 success rates for Apprenticeship delivery by Providers funded by Northamptonshire LSC.

Table 41: 2007/08 Apprenticeship Framework Overall Success Rates, Providers funded by Northamptonshire LSC

PROVIDER	Apprenticeships		Advanced Apprenticeships		Overall	
	Frameworks	Overall Success rate	Frameworks	Overall Success rate	Frameworks	Overall Success rate
Aston Recruitment & Training Limited	61	79%	6	100%	67	81%
Constant Browning Edmonds Limited	10	83%	-	-	10	83%
Intec Business Colleges Plc	7	88%	-	-	7	88%
Kettering Borough Council	34	72%	18	64%	52	69%
Key Training Limited	19	56%	1	100%	20	57%
Leicestershire Engineering Training Group Limited	7	70%	-	-	7	70%
Moulton College	108	64%	13	46%	121	61%
Northampton College	95	60%	17	68%	112	61%
Northamptonshire Industrial Training Association Limited	21	48%	6	60%	27	50%
Protocol Skills Limited	25	64%	0	0%	25	63%
Rathbone Training	6	35%	-	-	6	35%
South Leicestershire College	1	100%	-	-	1	100%
Starting Off (Kettering) Ltd.	80	74%	8	100%	88	76%
TNG Network Limited	6	40%	0	0%	6	33%
Triangle Training Ltd	88	75%	18	78%	106	76%
YMCA Training	11	52%	5	100%	16	62%
VT Training Plc	42	60%	1	13%	43	55%
Tresham Institute	59	67%	10	50%	69	64%
In Training (CBE) Ltd	1	100%	-	-	1	100%
Northamptonshire LSC Total	681	66%	103	62%	784	65%
East Midlands Total	3,781	64%	952	66%	4,733	65%

Source: ILR - WBL New Measures of Success Rates Drill Downs 2007/08

- 70 Northamptonshire's overall success rate in 2007/08 was on par with the regional average (65%).
- 71 Of those Providers with a higher volume of successful Framework completions, the following had good success rates which were above the local and regional average: Aston Recruitment and Training Ltd (81%); Triangle Training Ltd (76%); Starting Off (Kettering) Ltd (76%) and Kettering Borough Council (69%).

Apprenticeship Funding

72 Only 2008/09 funding information is available at this time. More detail, including 2009/10 funding allocations figures will be available in the next phase of the reports.

Table 42: 2008/09 Apprenticeship funding in Northamptonshire

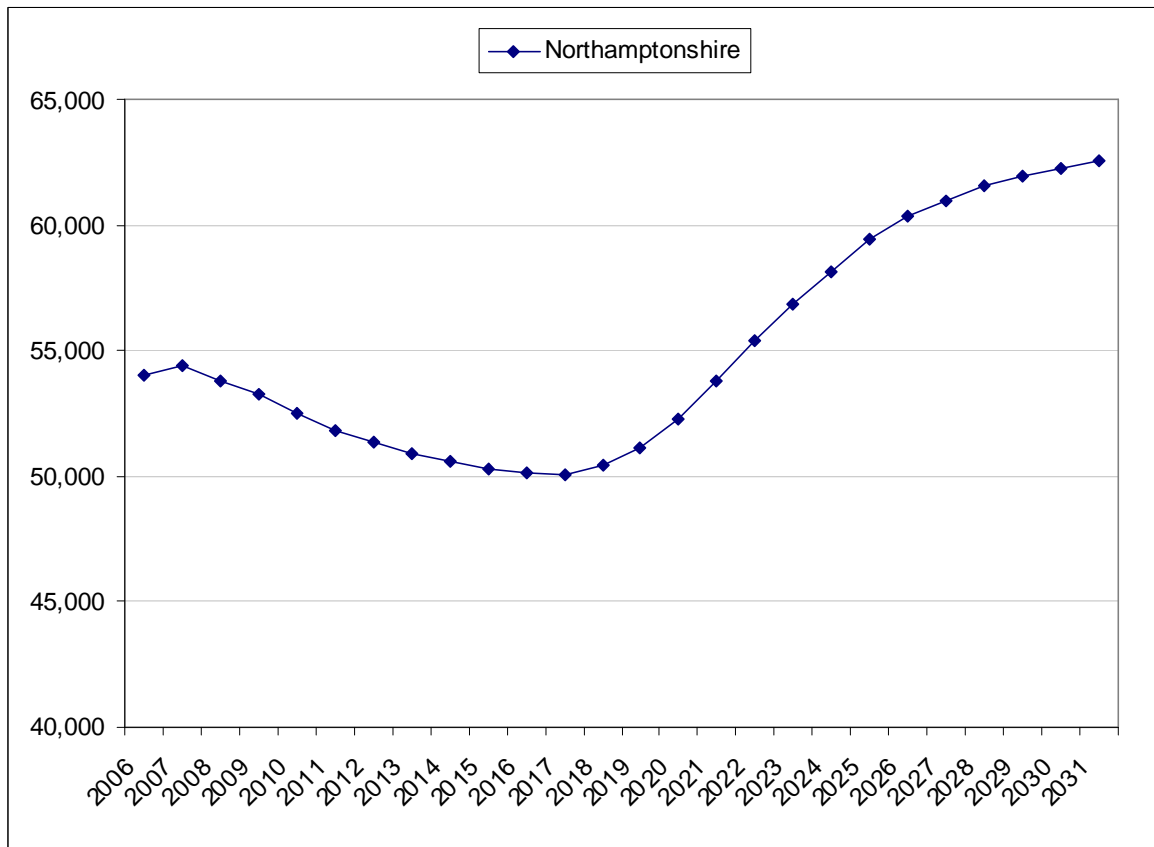
Provider	2008/09
	£
A4E LTD	£58,937.28
Aston Recruitment & Training Limited	£324,095.43
Intec Business Colleges Plc	£48,084.31
Intraining (CBE) Ltd	£98,096.88
JHP Group Limited	£110,714.26
Kettering Borough Council	£338,553.90
Key Training Limited	£140,231.22
Moulton College	£1,291,898.32
Northampton College	£882,711.39
Northamptonshire Industrial Training Association Limited	£418,901.16
Protocol Skills Limited	£192,887.87
Rathbone Training	£96,787.72
South Leicestershire College	£57,576.95
Starting Off (Kettering) Ltd.	£454,534.08
TNG Limited	£17,370.95
TNG Network Limited	£17,370.95
Tresham Institute	£954,213.56
Triangle Training Ltd	£710,842.84
VT Training Plc	£122,261.57
West Nottinghamshire College	£144,128.86
YMCA Training	£64,809.09

Source: 2008/09 LSC Apprenticeship funding allocations

Part 4 - Area Context

14-19 Population information

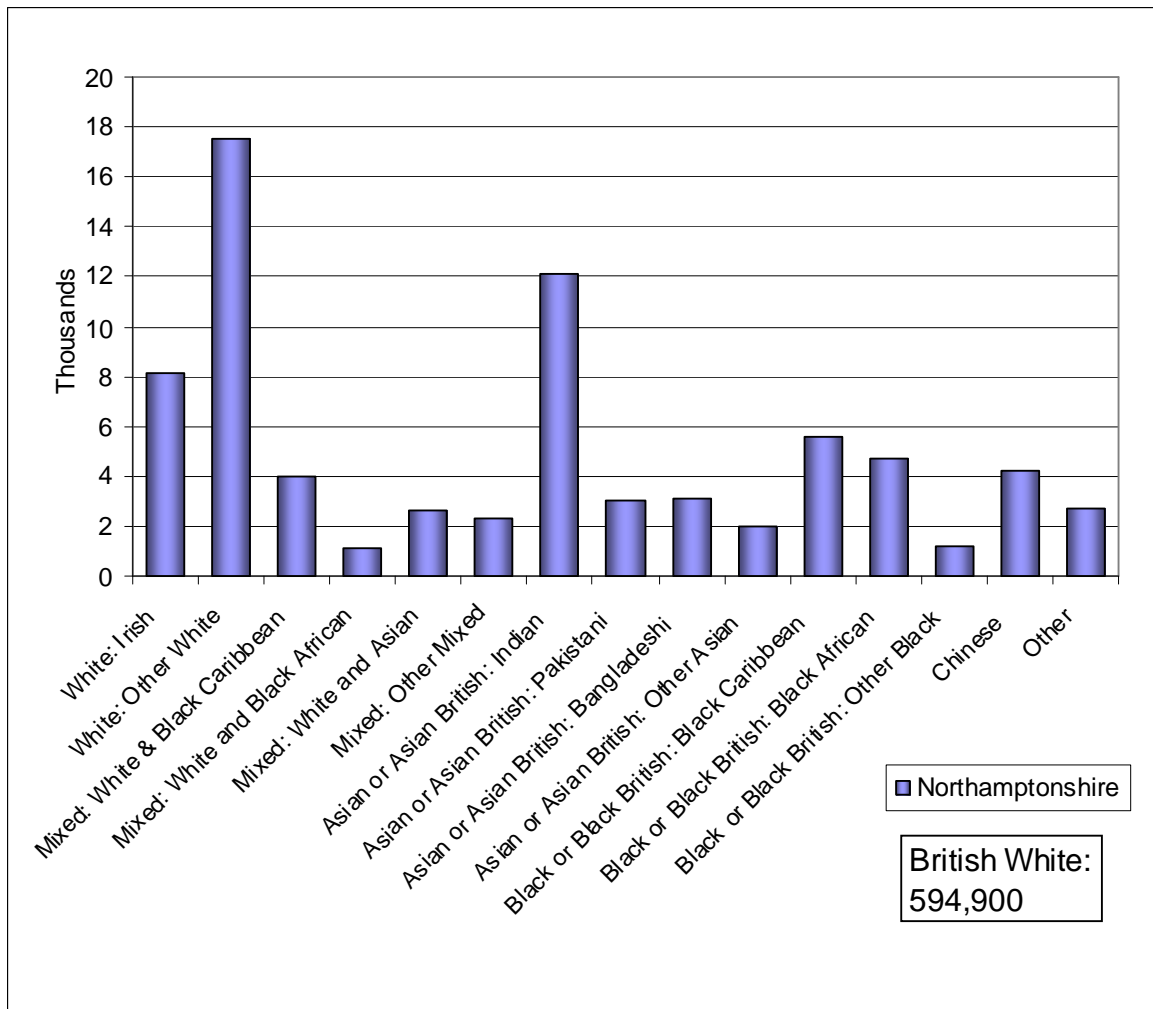
Figure 7: 14-19 population projections for Northamptonshire, 2006-2030



Source: ONS 2006-based population projections

- 73 From peak levels of 14-19 population in 2007, Northamptonshire will see a steady decline until 2016-17. The 2016-17 level will be around 8% lower. After 2017 the population will start to increase, returning to 2007 levels by 2021 and continuing to rise through till 2031 where they are forecast to be 15% above the 2006-07 level.

Figure 8: Estimate of resident population by ethnic group (all ages), 2006

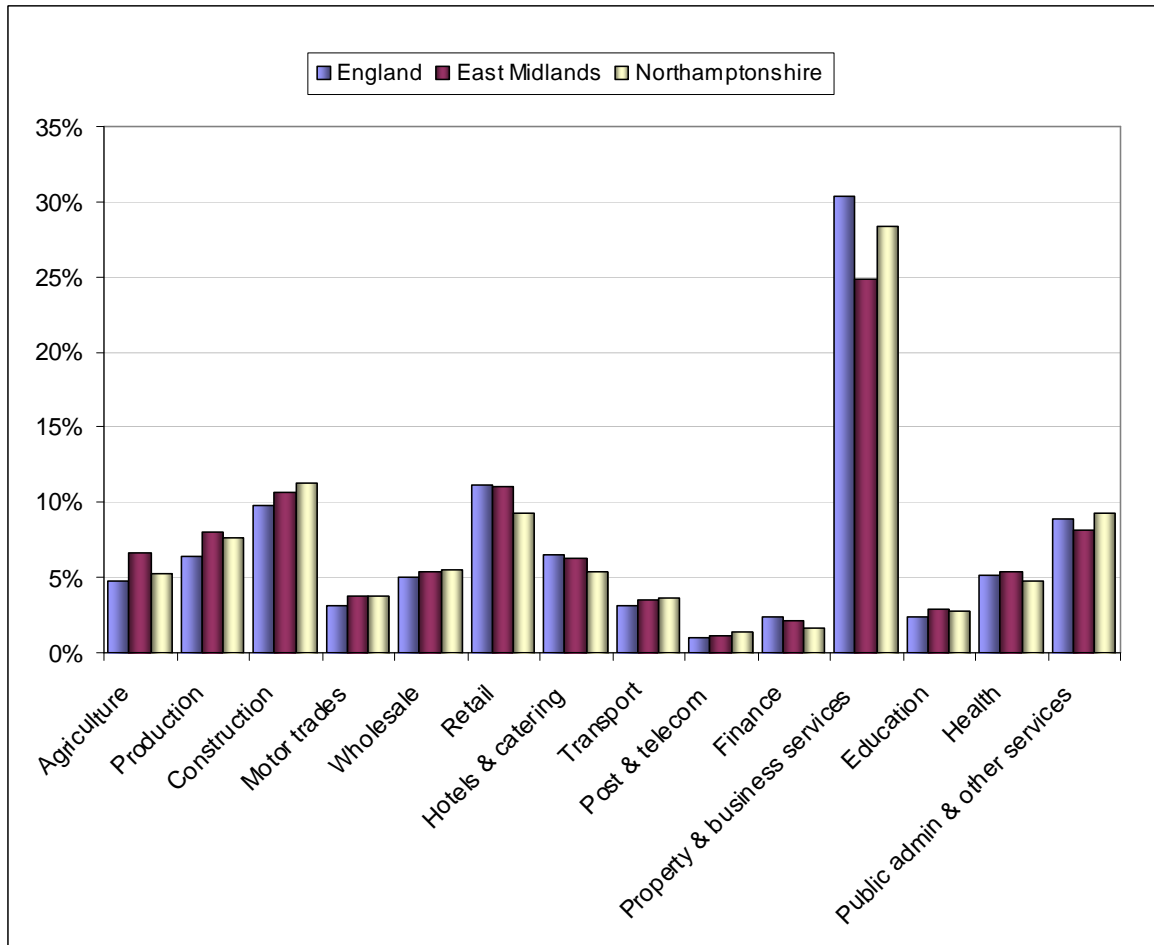


Source: OSN Estimates of resident population by ethnic group (experimental statistics). NB: the chart above does not show the White British Population figures

74 The three largest non-white communities in Northamptonshire are Indian (1.8%), Black Caribbean (0.8%) and Black African (0.7%). Overall 7.3% of the population are non-white. The White British population is the largest group in the City.

Employers and Employment in Northamptonshire

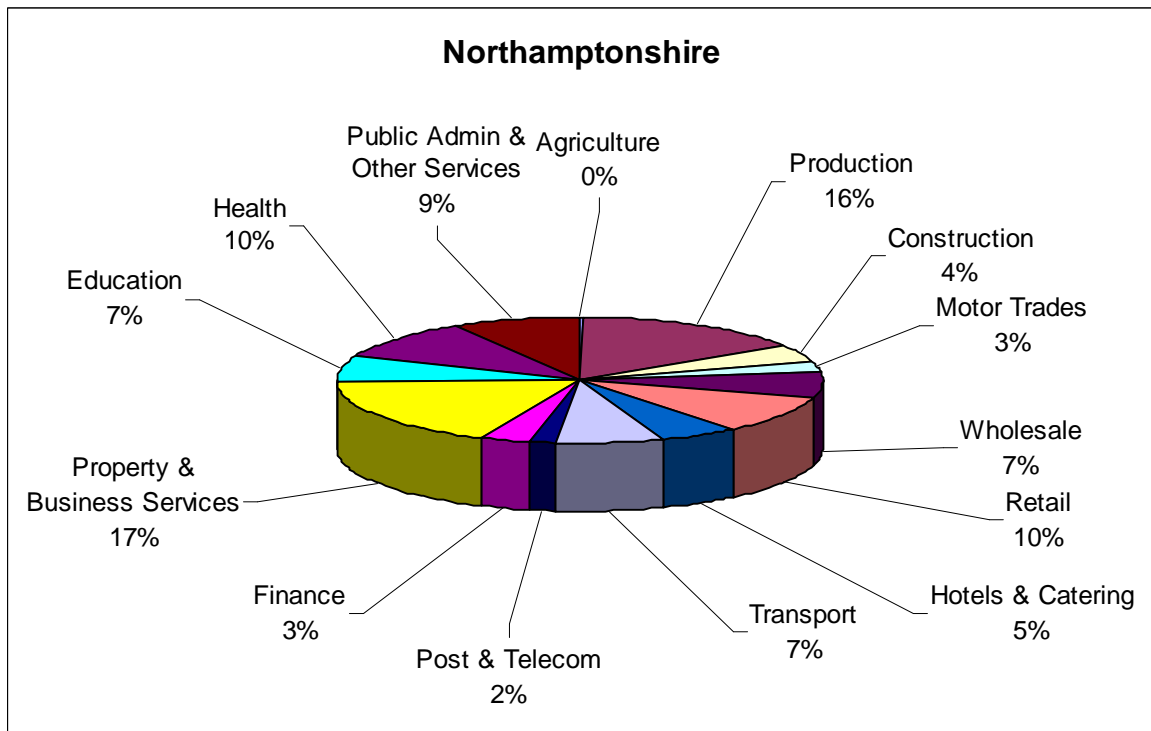
Figure 9: Distribution of business by broad industrial group



Source: Inter Departmental Business Register (IDBR) 2008

- 75 The largest sectors are 'Property & Business Services' (28.4%), 'Construction' (11.3%), and 'Public Admin & Other Services' (9.2%).

Figure 10: Employees in Northamptonshire by sector, 2007



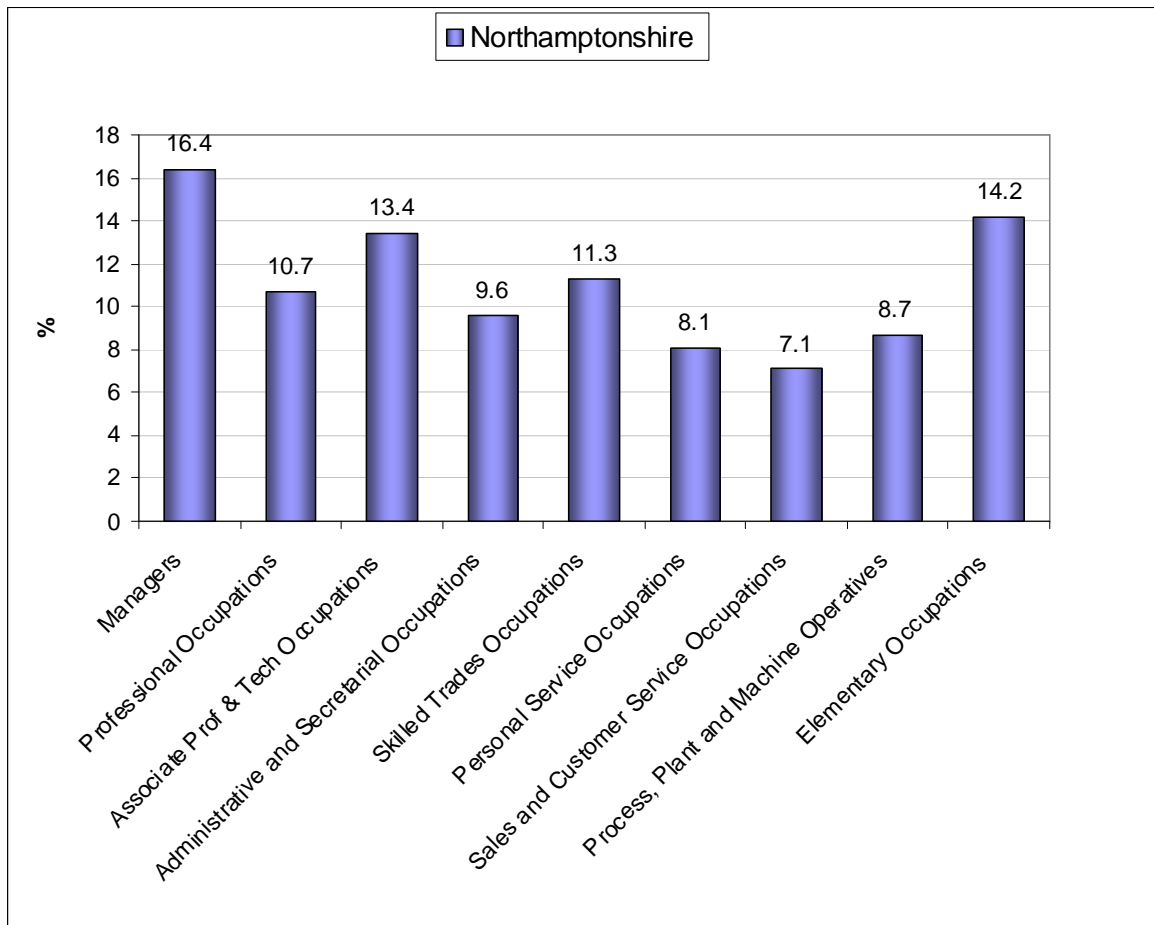
Source: Annual Business Inquiry (ABI)²⁰ (2007)

- 76 The sectors employing the largest numbers of people are 'Property & Business Services' (17%, 55700 persons), 'Production' (16%, 48800 persons), 'Health' (10%, 31800 persons) and 'Retail' (10%, 30700 persons).

²⁰ The Annual Business Inquiry (ABI) shows the distribution of employees by industry. The ABI is a survey of a sample of businesses within the IDBR. Therefore there are sampling errors as with any survey and results should be viewed as a guide not an absolute. All numbers rounded to nearest 100.

Skills

Figure 11: Employment by occupation group, 2007/08



Source: Annual Population Survey (APS), July 2007-June 2008

- 77 'Managers', 'Professional Occupations' and 'Associate Professional and Technical' are grouped together as 'Higher Occupations'. 'Administrative and Secretarial', 'Skilled Trades Occupations', 'Personal Service Occupations' and 'Sales and Customer Service Occupations' are grouped together as 'Intermediate Occupations'. 'Process, Plant and Machine Operators' and 'Elementary Occupations' are grouped together as 'Lower Occupations'. Recent and ongoing change is moving away from 'Lower' occupations towards 'Intermediate' and 'Higher' occupations.
- 78 'Managers' are now the largest single group at 16.4%. Higher occupations are now the largest combined group and the movement from 'Lower' to 'Higher' occupations is in the top half of Local Authorities in East Midlands.

Table 43: Proportion of 19-59/64 population with qualifications by level, 2007

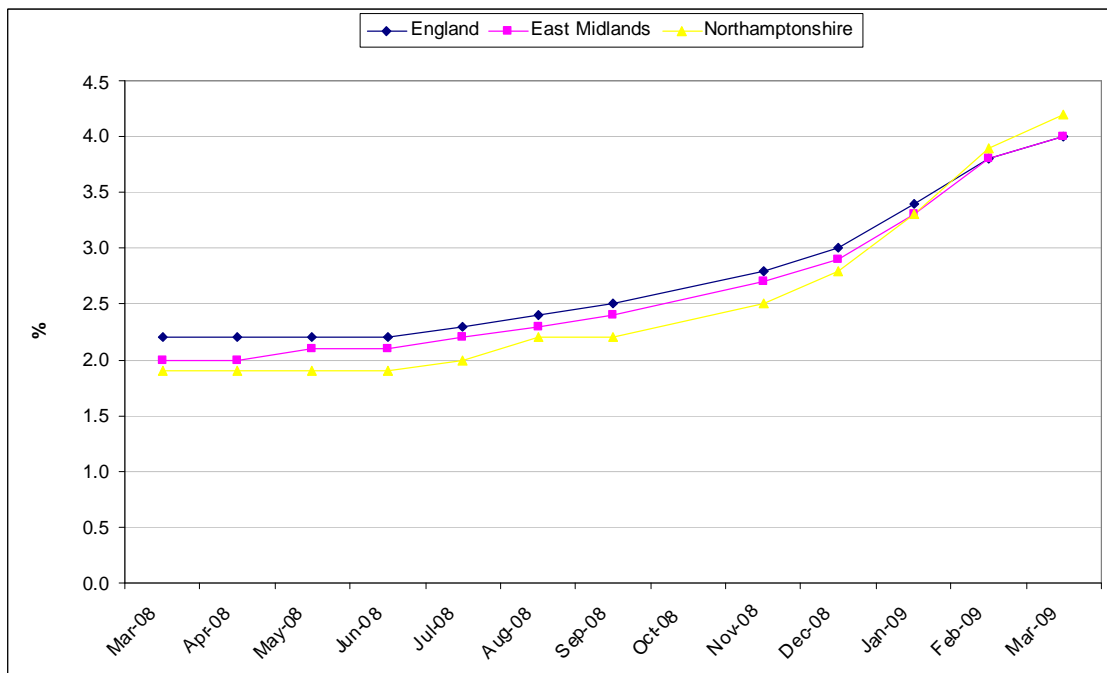
	Qualified to at least Level 4	Qualified to at least level 3	Qualified to at least level 2	Qualified lower than level 2	Number (000s) with a qualification below level 2	% with no qualification	Number (000s) with no qualification
Northamptonshire	28.6%	46.1%	67.4%	18.3%	72	14.3%	56
East Midlands	27.3%	47.0%	67.2%	19.7%	499	13.1%	331

Source: Annual Population Survey 2007, <http://www.dcsf.gov.uk/rsgateway/DB/STA/t000809/Table1.xls>

79 Northamptonshire compares favourably with the region in terms of the qualification levels of its residents, particularly those qualified to at least Level 4. However, compared to the region, Northamptonshire has a higher percentage of working age individuals with no qualifications compared to the region (14.3% against 13.1%).

Unemployment

Figure 12: Job Seekers Allowance Claimants Rates



Source - Jobcentre Plus via Office of National Statistics (ONS)

80 From March 08 to January 09 Northamptonshire has tracked a little below the National and Regional claimant levels. In February 09 Northamptonshire was at National and Regional levels and with the March 09 figure at 4.2% (representing 17,700 persons) is now 0.2 percentage points higher.

**Learning and Skills Council
East Midlands Regional Office**

17A Meridian East
Meridian Business Park
Leicester, LE19 1UU

Tel: 0845 019 4170
Fax: 0116 228 1801

<http://www.lsc.gov.uk/regions/EastMidlands>

© LSC June 2009
Published by the Learning and Skills Council

Extracts from this publication may be reproduced for non-commercial educational or training purposes on condition that the source is acknowledged and the findings are not misrepresented.

This publication is available in electronic form on the Learning and Skills Council website: www.lsc.gov.uk

If you require this publication in an alternative format or language, please contact the LSC Help Desk: 0870 900 6800

Publication reference: LSC-P-EM-470000