

16–19 Strategic Analysis for Nottingham City

June 2009

Of interest to Local Authorities and other
Partners and Stakeholders involved in
14-19 planning

16-19 Strategic Analysis Nottingham City

15 June 2009

Table of contents:

Introduction	3
Background and Issues for Consideration	5
Part 1 - 16-18 Resident learner participation	8
Analysis of participation by learning type 2007/08	8
Further Education (FE)	8
Apprenticeships.....	9
School Sixth Forms	13
Entry to Employment	16
September Guarantee	20
Travel to learn patterns	20
Further Education	20
Schools Sixth Forms.....	23
16-18 Resident Learner Achievement.....	25
FE Achievements	25
Apprenticeships Framework completions	25
School Sixth Forms	26
Part 2 - Progress towards PSA targets at 19	27
Part 3 - Provision within Nottingham City	31
Further Education providers.....	31
FE Achievements	35
FE Funding.....	36
Schools Sixth Forms	36
S6F Participation	36
S6F Achievement	37
S6F Funding.....	38
Apprenticeships	38
Apprenticeships Participation	38
Apprenticeships Achievements	43
Apprenticeships Funding	45
Part 4 - Area Context	46
14-19 Population information	46
Employers and Employment in Nottingham City	48
Skills.....	50
Unemployment.....	51
Part 5 –Sub-Regional Group (SRG) overview	52

Introduction

This 16-19 report is the first in a series of three to be published for Local Authorities (LAs) over the next 3 months. The purpose of the reports is to provide, in the Machinery of Government Transition year, sufficient details of 16-19 provision and learners for Local Authorities to be able to:

- a) Complement their existing strategic planning for 14-19 in the context of economic and employment information for their area.
- b) Develop detailed commissioning plans at LA and Strategic Regional Group levels.
- c) Focus on specific areas for improvement in their planning.
- d) Understand the provision accessed by their residents.
- e) Understand the scope and quality of the provision for those learners, wherever they are resident who choose to learn within providers situated within the LA's boundaries.

What the Series One report contains

Series one report contains sufficient detail of provision accessed by residents to enable points (a), (c) and (d) above. In addition, by its focus on providers it also allows LAs to achieve points (b) and (e) above.

Series Two and Three reports

These reports will provide more detail of specific provision and groups of learners, such as those with Learning Difficulties and/or Disabilities (LDD) and those on Entry to Employment (E2E) programmes. In addition details of the curriculum offered in 16-18 institutions and the characteristics of learners studying those curricula will be provided. It is intended that the series two and three reports will aid LAs in particular in the execution of points (b) and (c) above by increasing their understanding of need and provision. Planned final volumes of learners and funding for 2009/10 for the relevant providers in each Local Authority will also be part of series two reports.

Data for the reports

Where relevant data is published nationally by the Department for Children, Schools and Families, such as that in statistical first reports, or by the Office for National Statistics, this data has been used. Much of the remaining data comes from submissions on the Individual Learner Record (ILR) made by providers to the LSC, from school census data, or from internal LSC systems designed to deal with allocations of funding to providers and measuring targets. Since data comes in at specific times of the year for FE and schools, only whole year data is provided for these types of institutions. This restricts these data sets to 2005/06 to 2007/08. For E2E and Apprenticeships, data arrives monthly, so in-year (2008/09) data is provided in these cases.

In January, 2007, the LSC consulted with the sector on a new funding approach in the document *Delivering World-class Skills in a Demand-led System*. Following this consultation the LSC's funding approach changed significantly for 2008/09. This has had an effect on how the data is collated and aggregated together in

2008/09. Therefore it is urged that when making comparisons across these two years this change is taken into consideration.

Accessing the reports and information

The reports will be made available via the LSC's external website. Where information is confidential a separate file will be provided for LAs on disc. From July 2009, an updated data website will be available for LAs.

Background and Issues for Consideration

- 1 The working-age employment rate in Nottingham City is well below both the regional average (65% compared to 76.2%) and the England average (74.5%)¹. The level of economic inactivity (29.9%) is considerably higher than the region (19.3%) and than the national level (21.1%). The unemployment rate (7.1%) was higher than the regional (5.5%) and national averages (5.6%)².

The largest number of **employers**³ is to be found in 'Property & Business Services' (28.3%), 'Retail' (14.3%), and 'Public Admin and Other Services' (9.4%). 'Property & Business Services' and 'Retail' are larger than the region overall and 'Construction' is at about 2/3rds the regional level.

The greatest proportions of **employees** are to be found in 'Property & Business Services' (26%), 'Public Admin and other Services' (12%), 'Health' (12%) and 'Education' (11%)⁴.

- 2 Reviewing occupations⁵ within Nottingham City, 'Elementary Occupations' are the largest single group at 18.2%. 'Intermediate' occupations are the largest combined group and the movement from 'Lower' to 'Higher' occupations is slower in Nottingham City than most other areas of the East Midlands.
- 3 Overall Nottingham City does not compare well with the region in terms of the qualification levels of its working-age residents. In 2007 the levels of qualifications⁶ in the City for 'At Least Level 2', 'At Least Level 3' and 'At Least Level 4' were 63%, 45.2% and 23.1% respectively. Nottingham City also had a higher working-age population with no qualifications than the region as a whole (17.1% against 13.1%).
- 4 Participation⁷ in education and training of 16 and 17 year olds combined is 75%, 79% and 82% for 2004, 2005 and 2006 respectively. Whilst Nottingham City's averages were lower than the East Midland average in 2004 (77%), in 2005 and 2006 they surpassed the regional averages (78% and 79%). The City in 2006 also matched the overall England position, being only the second local authority in the region to do so, after Leicester City⁸.
- 5 Over the three years, participation at 16 increased considerably between 2004 and 2005 (from 78% to 87%) and fell slightly in 2006 (to 86%). Participation at 17 has increased year on year (71%, 72% and 78% respectively). Both at 16 and 17, Nottingham City was higher than the regional average (83% - 16 and 74% -17). In contrast, whilst the England

¹ Annual Population Survey October 2007-September 2008

² Annual Population Survey October 2007-September 2008

³ Inter Departmental Business Register (IDBR) 2008

⁴ Annual Business Inquiry (ABI) 2007

⁵ Annual Population Survey – July 2007 – June 2008

⁶ DCSF – Highest qualification held by population aged 19-59/64, 2007

⁷ DCSF – Participation in education and WBL of 16 & 17 year olds by LEAs in England

⁸ Leicester City's participation of 16 and 17 year olds in 2006 was 89% - Source: DCSF, Participation in education and WBL of 16 & 17 year olds by LEAs in England

overall participation average at 16 (87%) was slightly higher than Nottingham City's, at 17, the City was higher than the national average of 77%.

6 From peak levels of 14-19 population in 2008, Nottingham City is projected to see a steady decline until 2018. The 2018 level is expected to be around 17.5% lower. After 2018 the population will start to increase, returning to 2008 levels by 2026 and continuing to rise through till 2031 where they are forecast to be 5.5% above the 2008 level.

7 In 2006⁹, 13% and 10% of 16 year olds studied in Maintained¹⁰ and Independent School Sixth Forms¹¹. The percentage in Maintained Schools Sixth Forms is considerably lower than the region (34%) and in England overall (30%). However the percentage attending Independent Schools was higher in the City than in the region (5%) and nationally (7%). Sixth Form School learner numbers have increased in the last four years by 26%¹².

The number of learner residents from Nottingham City participating in FE colleges has risen from 2006/07 to 2007/08 (+5.6%). Early indications for 2008/09 show a slight decline in learner numbers¹³.

Apprenticeship numbers amongst Nottingham City's learner residents have increased slightly; 2.5% between 2006/07 and 2007/08¹⁴. This is in contrast to the regional average which has decreased (-2.3%). However, early 2008/09 data indicates a decline in numbers compared to the same point in the previous year.

8 Achievement of Level 2¹⁵ at 16 in 2007/08 was 58.2% which is below the regional and England average (62.7% and 64.8% respectively). When English and Maths are taken into account the difference increases; Nottingham City at 34.3% was well below the regional and national percentage (46.8% and 47.3% respectively).

9 For Levels 2 and 3 at 19¹⁶ (PSA Target), the results for the cohort who were age 19 in 2007/08 was 62.8% and 37.5% respectively. For Level 2 this was below the regional (73.1%) and national averages (76.7%). The same picture was apparent for Level 3 (46% and 50% respectively).

10 For Level 2 achievements, comparing improvements between 2003/04 and 2007/08 Nottingham City has increased by 12.6 percentage points, whilst the region and England overall has increased by 9.9 and 10.4 percentage points respectively. For Level 3 comparing the same period, Nottingham City has increased by 7.5 percentage points. The improvements seen in the regional and England overall averages were similar (7.2 and 7.8 percentage points respectively).

⁹ DCSF – Participation in education and WBL of 16 & 17 year olds by LEAs in England

¹⁰ Includes all pupils in maintained schools and maintained special schools

¹¹ Includes all pupils in independent schools, non-maintained special schools, city technology colleges, academies and pupil referral units

¹² See paragraph 29 and Figure 1

¹³ See Table 1

¹⁴ See Table 6

¹⁵ DCSF – School Performance Tables 2007/08

¹⁶ Fisher Family Trust matched administrative dataset 2007/08

- 11 In 2007/08¹⁷, the success rates for provision in FE colleges contracted by Nottinghamshire LSC for Full Level 2 (75.2%) was above the regional average (74%), but below for Full Level 3 (70.6% compared to 74%). The overall success rate for Nottinghamshire LSC (79.4%) was 0.5 percentage points above the regional rate. Comparing 2007/08 to the previous year, Nottinghamshire LSC's Full Level 2 success rates have improved by 4.4 percentage points, whilst Full Level 3 rates have improved by 1.9 percentage points. Overall success rates increased by 3 percentage points.

In 2007/08, 2,413 Full Level 2 aims were achieved which is a 15% increase over 2006/07. 1,691 Full Level 3 aims were achieved in 2007/08 which is a 23% increase over 2006/07. Overall 27,588 aims were achieved, a 9% increase since 2006/07¹⁸.

- 12 In 2007/08, Nottinghamshire LSC achieved 993 and 242 Framework Completions¹⁹ in Apprenticeships (A) and Advanced Apprenticeships (AA) respectively. This represented an increase of 3.5% (A) and 35.2% (AA). The overall success rate²⁰ in 2007/08 was 61% which was an increase of 1 percentage point over the 2006/07 rate. However, Nottinghamshire LSC was below the regional overall success rates (65%).

Issues for consideration/improvement

- Participation in education of 16 and 17 year olds needs to continue to improve in line with the raising of the participation age, and the drop out between 16 and 17 needs to change.
- Achievement at Level 2 by 16 has shown improvement in recent years, however further improvement is needed to bring rates closer to regional levels and above.
- Achievement at Level 2 and Level 3 by 19 has shown improvement year on year from 2003/04 to 2007/08. However, levels are currently well below regional rates and need to be improved further to bring them up to regional levels.
- Apprenticeship participation has increased between 2006/07 and 2007/08, though early data in 2008/09 shows a slight decline in numbers which potentially could be a reflection of the current economic downturn. This will require monitoring to ensure that the City can build on its previous improvements to continue to increase participation numbers.

¹⁷ ILR - FE Success Rates Drill Downs Detail 05/06 - 07/08.xls

¹⁸ ILR FE Success Rates – Detail – 05/06 -07/08 drilldowns.xls

¹⁹ Source: ILR - WBL New Measures of Success Rates Drill Downs 2007/08

²⁰ Source: ILR - WBL New Measures of Success Rates Drill Downs 2007/08

Part 1 - 16-18 Resident learner participation

- 13 This section is intended to show where the young people living within Nottingham City local authority are learning and to highlight any issues relating to demand for learning within the area.

Analysis of participation by learning type 2007/08

Further Education (FE)

Table 1: East Midlands 16-18 FE learners by LA of residence

Learner LEA	2006/07 (full year)		2007/08 (full year)		2008/09 (as at March 2009)	
	Learners	% of East Midlands	Learners	% of East Midlands	Learners	% of East Midlands
Derby City	3,401	5.9%	3,575	6.0%	3,406	5.7
Derbyshire	9,644	16.8%	9,708	16.3%	9,746	16.2
Leicester City	6,637	11.5%	6,850	11.5%	7,016	11.7
Leicestershire	6,856	11.9%	7,098	11.9%	6,996	11.6
Lincolnshire	8,144	14.2%	8,400	14.1%	9,011	15.0
Northamptonshire	8,186	14.2%	8,424	14.1%	8,366	13.9
Nottingham City	4,811	8.4%	5,082	8.5%	4,965	8.3
Nottinghamshire	9,336	16.2%	9,702	16.3%	10,136	16.8
Rutland	523	0.9%	562	0.9%	525	0.9
(Unknown based on Postcode)			237	0.4%		
Total East Midlands	57,538	100.0%	59,638	100.0%	60,167	100.0%

Source: 2007/08 ILR F05 returns (FE 0506-0708 Learner Drill down) and 2008/09 ILR F02 return

- 14 Broadly the 16-18 population resident in Nottingham City who are engaged in learning in Further Education has remained fairly steady over the last three years, fluctuating around the 5000 mark. In 2006/07 there were 4,811 learners studying in Further Education. This rose to 5,082 in 2007/08. This was a growth of 5.3 %, which is above the East Midlands figure of 3.6%. In 2007/08, Nottingham City residents represented 8.5% of all 16-18 year old FE learners within East Midlands.

Table 2: Nottingham City 16-18 FE learners by gender

	Year	Female		Male	
	Nottingham City	2006/07	2,504	52.0%	2,307
	2007/08	2,605	51.3%	2,477	48.7%
East Midlands	2006/07	29,226	50.8%	28,312	49.2%
	2007/08	30,217	50.7%	29,421	49.3%

Source: 2007/08 ILR F05 returns (FE 0506-0708 Learner Drill down)

- 15 Using LSC data returns, the female/male gender split in FE learners in 2006/07 and 2007/08 was 52.0% to 48.0% and 51.3% to 48.7% respectively. This is broadly comparable to the regional averages. Using Office of National

Statistics (ONS) Mid 2007 Population Estimates the 16-18 year old population female/ male split in Nottingham City was 49.3% to 50.7%.

Table 3: Nottingham City 16-18 FE learners by ethnicity

	Year	Asian		Black		Chinese		Mixed		Other		Unknown		White	
Nottingham City	2006/07	495	10%	580	12%	28	1%	458	10%	60	1%	62	1%	3,128	65%
	2007/08	530	10%	585	12%	27	1%	454	9%	55	1%	62	1%	3,369	66%
East Midlands	2006/07	4,935	9%	1,769	3%	164	0%	1,781	3%	487	1%	669	1%	47,733	83%
	2007/08	4,973	8%	1,881	3%	174	0%	1,839	3%	471	1%	656	1%	49,644	83%

Source: 2007/08 ILR F05 returns (FE 0506-0708 Learner Drill down)

- 16 LSC data returns show that the white community in Nottingham City represented 65% and 66% of the population learning in Further Education in 2006/07 and 2007/08 respectively. This is well below the East Midlands average of 83%. In 2007/08 The Black, Asian and Mixed communities represented 12%, 10% and 9% of the population.

Table 4: Nottingham City 16-18 FE learners by highest level of study

	Year	Notional Level									
		Entry and Level 1		Level 2		Level 3		Level 4, 5 and Higher		Other (including Mixed)	
Nottingham City	2006/07	1,234	26%	1,435	30%	2,130	44%	3	0%	9	0%
	2007/08	1,390	27%	1,427	28%	2,262	45%	2	0%	1	0%
East Midlands	2006/07	10,785	19%	17,631	31%	28,939	50%	65	0%	118	0%
	2007/08	12,359	21%	17,496	29%	29,556	50%	53	0%	174	0%

Source: 2007/08 ILR F05 returns (FE 0506-0708 Learner Drill down)

- 17 In 2007/08, 45% of 16-18 FE learners resident in Nottingham City were studying at Level 3. This is below the regional average of 50%. Just under a third of those in learning in FE were studying at Level 2, slightly above the regional average of 29%. The remaining 27% were studying at Entry and Level 1, which is a small increase since 2006/07, and above the regional average (21%).

Apprenticeships

- 18 This section examines the participation of learners living in the Nottingham City LA area who have undertaken or are undertaking Apprenticeships. The data includes learners who have been funded by East Midlands LSC areas, other LSC areas in England or the National Employer Service. An average of the number of learners undertaking Apprenticeships in a given month over a

12 month period is used to show participation in the 2006/07 and 2007/08 tables.

Table 5: Resident Learners by LA Level participating on Apprenticeships and proportion within the East Midlands

Local Authority	2006/07	% East Midlands	2007/08	% East Midlands
Derby City	832	6.0	843	6.3
Derbyshire	2769	20.1	2657	19.7
Leicester City	519	3.8	477	3.5
Leicestershire	1949	14.1	1899	14.1
Lincolnshire	2128	15.4	2013	14.9
Northamptonshire	2043	14.8	1994	14.8
Nottingham City	755	5.5	774	5.7
Nottinghamshire	2740	19.9	2767	20.5
Rutland	67	0.5	55	0.4
EAST MIDLANDS	13,802	100.0	13,479	100.0

Source: ILR - WBL AND E2E DRILL DOWNS 2006/07 and 2007/08 (July 2007 and July 2008)
Average in Learning' data

- 19 In 2007/08, 5.7% of learners undertaking Apprenticeships from the East Midlands were living in the Nottingham City LA area.

Table 6: 16-18 Apprenticeship Participation by Programme Level, 2006/07 – 2007/08

Area	Programme Level	2006/07	2007/08	% change 2006/07 - 2007/08
Nottingham City	Apprenticeships	490	508	3.6
	Advanced Apprenticeships	264	266	0.5
	Total	755	774	2.5
East Midlands	Apprenticeships	8905	8719	-2.1
	Advanced Apprenticeships	4897	4760	-2.8
	Total	13,802	13,479	-2.3

Source: ILR - WBL AND E2E DRILL DOWNS 2006/07 and 2007/08 (July 2007 and July 2008)
'Average in Learning' data

- 20 Between 2006/07 and 2007/08, there was a slight increase in overall Apprenticeship participation amongst learners resident in Nottingham City (2.5%). In contrast, participation in the region as a whole decreased (-2.3%).
- 21 More young people were studying an apprenticeship at Level 2 (3.6%) during this period, whilst the region saw a 2.1% decrease. Participation on Advanced Apprenticeships remained stable, unlike the region which saw a reduction (2.8%).

Table 7: 16-18 Overall Apprenticeship Programme Participation by Gender, 2006/07 – 2007/08

Area	Gender	2006/07		2007/08	
		Number	%	Number	%
Nottingham City	Female	312	41.4	322	41.6
	Male	443	58.6	452	58.4
	Total	755	100.0	774	100.0
East Midlands	Female	4,958	35.9	4,916	36.5
	Male	8,844	64.1	8,563	63.5
	Total	13,802	100.0	13,479	100.0

Source: ILR - WBL AND E2E DRILL DOWNS 2006/07 and 2007/08 (July 2007 and July 2008)
'Average in Learning' data

- 22 Compared to the region, there were proportionately more females undertaking Apprenticeships amongst Nottingham City resident learners in 2006/07 and 2007/08. Between the two years 2006/07 and 2007/08, there has been a marginal growth in the volume of female participation whilst male participation has decreased slightly. This is in line with the regional picture.

Table 8: 16-18 Overall Apprenticeship Programme Participation by Ethnicity, 2006/07 – 2007/08

Area	Ethnicity	2006/07		2007/08	
		Number	%	Number	%
Nottingham City	Ethnic Minority	69	9.1	75	9.6
	White	681	90.3	694	89.7
	Not Known	5	0.7	5	0.7
	Total	755	100.0	774	100.0
East Midlands	Ethnic Minority	420	3.0	472	3.5
	White	13,335	96.6	12,953	96.1
	Not Known	47	0.3	54	0.4
	Total	13,802	100.0	13,479	100.0

Source: ILR - WBL AND E2E DRILL DOWNS 2006/07 and 2007/08 (July 2007 and July 2008)
'Average in Learning' data

- 23 In 2007/08, 9.6% of those Nottingham City residents undertaking Apprenticeships were from a minority ethnic background, which is almost three times greater than the proportion at regional level. Like the region there has been a slight increase year on year from 2006/07 to 2007/08.

- 24 Learners on Apprenticeships, as in FE, are asked whether they feel they have a learning difficulty and/or disability and so the numbers shown here and in later tables reflect learners who have self-declared a difficulty or disability.

Table 9: 16-18 Overall Apprenticeship Programme Participation by Learners with Learning Difficulties and/or Disabilities, 2006/07 – 2007/08

Local Authority	2006/07				2007/08			
	No Disability/Learning Difficulty	Not Known/Not Provided	Disability/Learning Difficulty Recorded	% with Disability/Learning Difficulty	No Disability/Learning Difficulty	Not Known/Not Provided	Disability/Learning Difficulty Recorded	% with Disability/Learning Difficulty
Nottingham City	696	1	57	7.6	724	3	47	6.1
EAST MIDLANDS	12987	53	762	5.5	12768	65	646	4.8

Source: ILR - WBL AND E2E DRILL DOWNS 2006/07 and 2007/08 (July 2007 and July 2008) 'Average in Learning' data

- 25 There has been a marginal decrease in the volume and proportion of learners with a learning disability and/or disability from Nottingham City undertaking Apprenticeships in 2007/08 since 2006/07. This reflects the reduction in the overall region.

2008/09 Data – Period 8 (latest to March 2009)

- 26 Latest information on Apprenticeships is available up to March 2009 in the academic year. The data below provides provisional indications of current participation on the Apprenticeship programme by learners resident in Nottingham City. Data as at March 2008 for 2007/08 is used to compare the current picture.

Table 10: 16-18 Apprenticeship Participation, 2008/09

Area	Programme Level	2007/08 (March 08)	2008/09 (March 09)	2007/8 - 2008/09 Change	
				Number	% Change
Nottingham City LA	Apprenticeship	525	489	-36	-6.8
	Advanced Apprenticeship	272	248	-24	-8.8
	Total	797	737	-60	-7.5
East Midlands	Apprenticeship	9036	8,577	-459	-5.1
	Advanced Apprenticeship	4990	4,748	-242	-4.9
	Total	14027	13,325	-702	-5.0

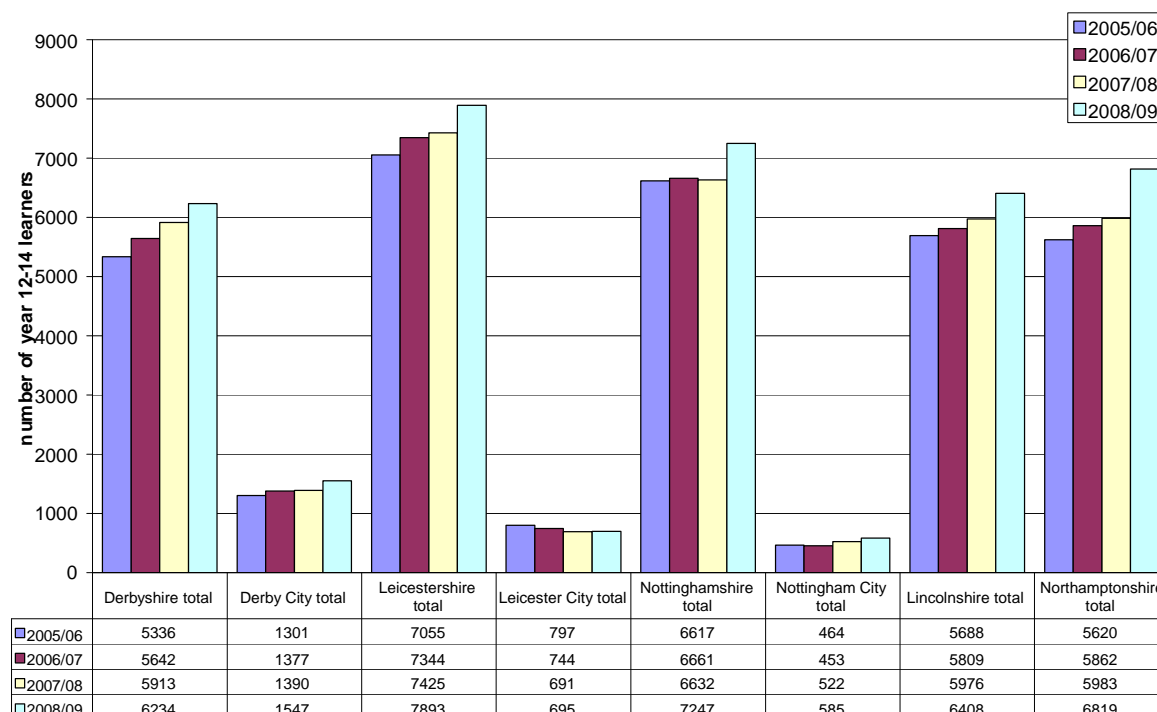
Source: ILR -Employer Responsive Drill Downs 2008/09, Period 8 (March 2009), WBL and E2E 2007/08 Period 8 Drill Downs (March 2008)

27 Overall, Apprenticeship participation as at the end of March is lower in 2008/09 compared to the same period in 2007/08 amongst learners residing in Nottingham City (-60 learners, -7.5%). This overall decrease was reflected in the region as a whole.

School Sixth Forms

28 This section provides Schools Sixth Form learner participation information in Nottingham City local authority area.

Figure 1: 16-18 learner numbers in school sixth forms, 2006/07-2008/09

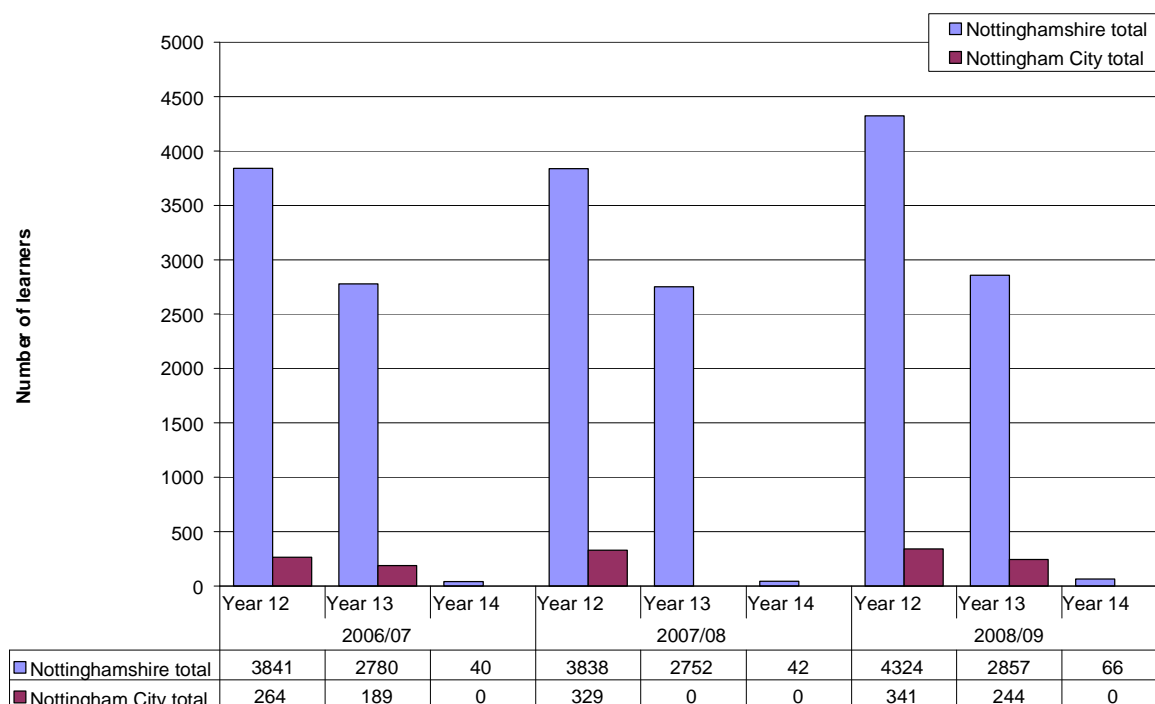


Source: PLASC, 2006-2008

29 Over the last 4 years from 2005/06 to 2008/09, the school sixth form population has grown by 26%.

- 30 Nottingham City saw an increase of 63 learners in Years 12-14 in 2008/09, a 12.1 per cent increase on 2007/08 numbers. This increase was one of the higher rates of increase in the East Midlands.

Figure 2: Learner numbers in Years 12-14 for Nottingham City and Nottinghamshire, 2006/07-2008/09



Source: PLASC, 2006-2008

- 31 Similar to previous years, in 2008/09 there was a 28% decrease in learners in the cohort between years twelve and thirteen in Nottingham City School Sixth Forms. A very small percentage stayed on in learning into year 14.

Table 11: 16-18 learners attending a Schools Sixth Form funded by the LSC East Midlands: Gender breakdown (% of total group)

School LA	2007/08 Learners		2008/09 Learners	
	Female %	Male %	Female %	Male %
Derby City	54.5	45.5	54.2	45.8
Leicester City	51.5	48.5	49.4	50.6
Nottingham City	57.3	42.7	56.4	43.6
Nottinghamshire	53.1	46.9	53.3	46.7
Derbyshire	53.4	46.6	53.0	47.0
Leicestershire	52.3	47.7	50.5	49.5
Lincolnshire	53.2	46.8	53.1	46.9
Northamptonshire	53.3	46.7	52.6	47.4
East Midlands	53.1	46.9	52.5	47.5

Source: LSC MI 2007/08 and 2008/09 Schools Sixth Form Analysis

32 In 2007/08 and 2008/09 there was a higher proportion of females compared to the region as a whole attending a Schools Sixth Form in Nottingham City.

Table 12: 16-18 learners attending a Schools Sixth Form funded by the LSC East Midlands: Ethnicity breakdown (% of total group)²¹

LA Area	Year	Any Other	Asian or Asian British	Black or Black British	Chinese	Mixed Heritage	Not Known/Not Provided	White
Derby	2007/08	0.2	16.0	2.6	1.0	2.5	2.2	75.4
	2008/09	0.7	14.7	2.1	0.8	2.3	1.3	78.1
Leicester	2007/08	1.0	40.1	5.8	0.0	7.1	0.9	45.1
	2008/09	1.2	38.6	6.4	0.1	5.7	1.9	46.1
Nottingham	2007/08	0.2	14.5	10.7	1.1	4.5	0.9	68.0
	2008/09	1.0	19.1	8.9	0.5	5.2	0.2	65.1
Nottinghamshire	2007/08	0.4	2.4	0.9	0.6	1.1	0.8	93.9
	2008/09	0.4	2.5	0.8	0.8	1.4	1.4	92.6
Derbyshire	2007/08	0.1	0.9	0.2	0.4	1.2	0.6	96.6
	2008/09	0.2	0.8	0.2	0.3	1.1	0.8	96.5
Leicestershire	2007/08	0.3	12.1	0.5	0.5	2.0	2.0	82.5
	2008/09	0.3	11.8	0.6	0.5	2.2	2.6	82.0
Lincolnshire	2007/08	0.5	1.3	0.6	0.7	1.1	0.9	95.0
	2008/09	0.3	1.1	0.6	0.7	1.1	1.1	95.1
Northamptonshire	2007/08	0.4	4.6	2.3	0.5	2.5	1.5	88.2
	2008/09	0.4	4.6	2.9	0.5	2.7	1.2	87.9
East Midlands	2007/08	0.3	5.9	1.2	0.6	1.8	1.2	89.0
	2008/09	0.4	5.7	1.3	0.6	1.9	1.4	88.7

Source: LSC MI 2007/08 and 2008/09 Schools Sixth Form Analysis

33 Compared to the region as a whole, Schools Sixth Forms in Nottingham City had a higher proportion of learners from an Asian or Asian British background and Black or Black British background in 2007/08 and 2008/09.

²¹ Asian or Asian British includes those who are Indian, Pakistani or Bangladeshi or from any other Asian background. Black or Black British includes those with an African or Caribbean heritage or from any other Black background. Mixed heritage includes those who are White and Asian, White and Black African, White and Black Caribbean or from any other Mixed heritage background. White includes those who are White British, White Irish or from any other White background.

Table 13: 16-18 learners attending a Schools Sixth Form funded by the LSC East Midlands: Special Educational Needs (SEN) (% of total group)

LA NAME	2007/08 Learners				2008/09 Learners			
	School/ Early Years Action %	School/ Early Years Action + %	Statement %	No SEN %	School/ Early Years Action %	School/ Early Years Action + %	Statement %	No SEN %
Derby	1.1	0.1	1.0	97.7	4.7	0.7	1.1	93.6
Leicester	5.6	2.4	0.3	91.7	6.9	3.1	0.7	89.3
Nottingham	5.6	2.4	0.4	91.5	5.5	2.1	0.3	92.1
Nottinghamshire	4.0	0.5	0.4	95.1	4.8	0.8	0.6	93.8
Derbyshire	1.9	0.8	0.4	96.8	1.5	1.1	0.6	96.9
Leicestershire	1.9	1.0	1.1	96.0	2.4	1.1	1.0	95.5
Lincolnshire	2.5	1.1	0.9	95.4	4.2	1.5	0.9	93.4
Northamptonshire	3.2	0.8	0.8	95.2	5.7	1.2	0.9	92.2
East Midlands	2.8	0.9	0.7	95.6	3.8	1.2	0.8	94.2

Source: LSC MI 2007/08 and 2008/09 Schools Sixth Form Analysis.

- 34 Table 13 shows the proportion of 16-18 learners with Special Educational Needs (SEN) attending Schools Sixth Forms across local authority areas in the East Midlands in 2007/8 and 2008/09. The variation in the data is partly a reflection of differing Local Authority policies with regard to learners with Special Educational Needs. Further detailed information about learners with special education needs will be provided in the second series separate report

Entry to Employment

- 35 This section provides summary information about learners who have undertaken E2E learning in 2006/07 and 2007/08.
- 36 More detailed information about the learners in terms of gender, ethnicity and learning difficulties and/or disabilities will be available in the next phase of these reports at the end of June.

**Table 14: E2E trends in Starts, Occupancy, and Average Length of Stay
2006/07 – 2007/08: learners living in local authority areas**

2005/06 -2007/08 Summary	2006/07	2007/08	2006/07	2007/08	2006/07	2007/08	2006/07	2007/08
	Starts		Participation* (Occupancy)		Total Leavers		Average Stay (weeks)	
Derby City	550	473	196	182	524	431	15.5	16.2
Derbyshire	811	886	286	336	732	804	14.8	16.0
Leicester City	356	401	142	161	337	376	16.3	16.8
Leicestershire	312	380	119	148	318	342	15.1	15.9
Lincolnshire	621	613	272	297	573	553	20.9	19.1
Northamptonshire	711	676	274	287	652	694	17.2	17.9
Nottingham City	314	335	143	178	285	288	21.9	23.5
Nottinghamshire	662	609	323	438	636	552	21.2	24.4
Rutland	7	3	5	7	11	1	22.2	19.3
EAST MIDLANDS	4344	4376	1760	2033	4068	4041	17.8	18.5

Source: ILR - WBL and E2E drill downs 2006/07 – 2007/08. *Occupancy shows the average number of learners on an E2E programme in one month during a 12 month period.

- 37 Nottingham City has seen an increase in starts and in participation in E2E between 2006/07 and 2007/08. This is in line with regional figures.
- 38 The average stay in E2E learning (by weeks) has increased during this period. This suggests that the more difficult to reach learners are enrolling on the programme and requiring more support to stay in learning. The average length of stay in Nottingham City (23.5 weeks) in 2007/08 was considerably above that of the region (18.5 weeks). This is due to the particular programme offered in Nottingham City/Nottinghamshire where the programme provides learning at Level one for E2E learners.

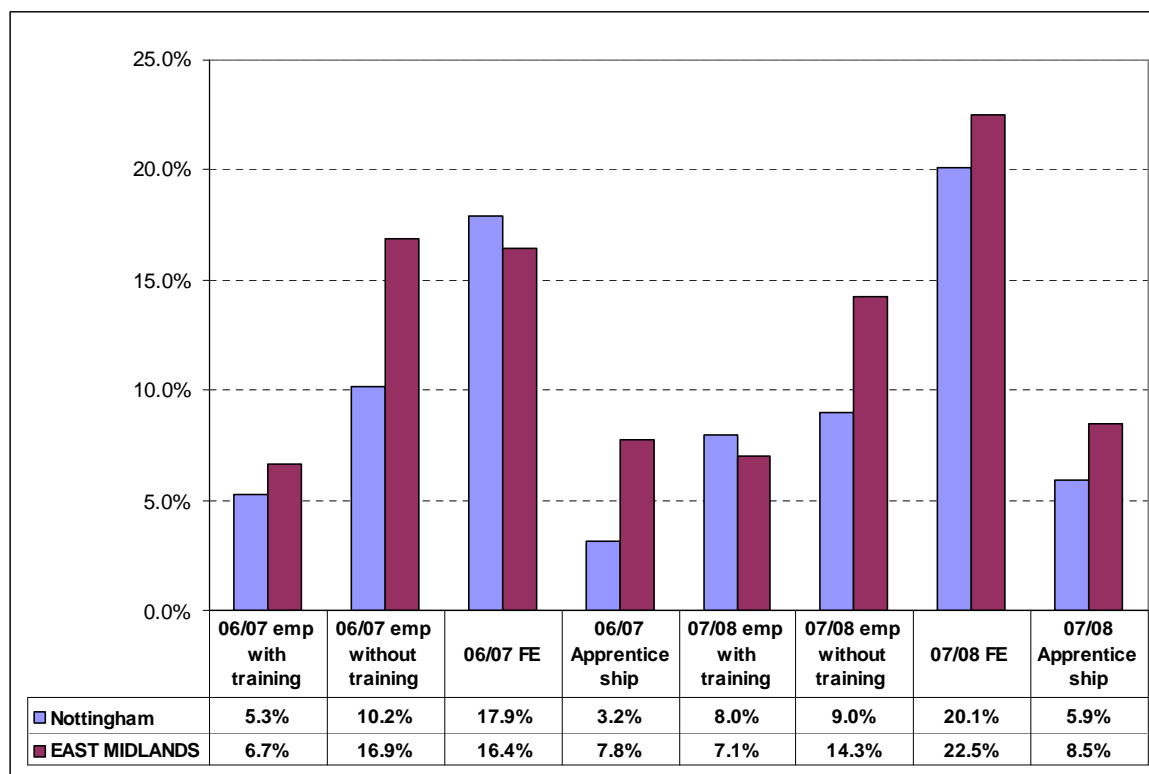
Table 15: E2E trends in Positive Outcomes: Overall Positive Outcomes, FE and Apprenticeships (App) 2006/07 – 2007/08: learners living in local authority areas

2006/07 - 2007/08 Summary	Positive outcomes									
	2006/07					2007/08				
	OVERALL	emp WITH training	emp WITHOUT training	FE	APP.	OVERALL	emp WITH training	emp WITHOUT training	FE	APP.
Derby City	229	21	69	101	38	219	20	50	122	27
Derbyshire	358	39	113	139	67	395	40	108	181	66
Leicester City	162	14	54	49	45	218	16	51	84	67
Leicestershire	162	44	52	44	22	196	27	61	79	29
Lincolnshire	309	77	115	82	35	311	35	120	129	27
Northamptonshire	304	30	137	99	38	350	91	84	126	49
Nottingham City	104	15	29	51	9	124	23	26	58	17
Nottinghamshire	305	32	110	101	62	301	32	76	131	62
Rutland	9	0	7	2	0	1	1	0	0	0
EAST MIDLANDS	1942	272	686	668	316	2115	285	576	910	344

Source: ILR - WBL and E2E drill downs 2006/07 – 2007/08

- 39 A positive outcome from an E2E programme in LSC terms is a learner who progresses to either FE, an Apprenticeship or other employment with training. In LSC terms employment **without** training is not a positive outcome, but for ease of reading the employment without training figures have been included in Table 15 above.
- 40 The number of overall positive outcomes from E2E learning amongst Nottingham City's residents increased by 19% between 2006/07 and 2007/08. The proportion of Young People progressing into Apprenticeships increased from 9% to 14% over this period, whilst those going into FE decreased by 2 percentage points. The proportion of young people leaving the programme to go to a job without training fell by 7 percentage points over this period. This compares favourably with the region where the proportion of young people going into Apprenticeships remained static and those leaving the programme to go to a job without training fell by 8 percentage points over this period. However, unlike the City, the region saw an increase in outcomes to FE during this period (9 percentage points).

Figure 3: Nottingham City Learners - E2E trends in Positive Outcomes: Overall Positive Outcomes, FE and Apprenticeships (App) 2006/07 – 2007/08



Source: ILR - WBL and E2E drill downs 2006/07 – 2007/08

2008/09 – Latest position to January 2009

41 The table below presents the latest position (to January 2009) on E2E starts by learners living in local authority areas in the region.

Table 16: 2008/09 latest E2E Learner Starts – Learners Living in the East Midlands

Local Authority Area	2008/09 16-18 E2E Starts - latest to January 2009
Derby City	225
Derbyshire	590
Leicester City	124
Leicestershire	127
Lincolnshire	370
Northamptonshire	341
Nottingham City	202
Nottinghamshire	326
Rutland	4
East Midlands total	2309

Source: ILR - DASH 0809-0809 - E02 - Learner.xls. NB; data includes provision contracted outside of the region.

- 42 More detailed information on the latest picture will be available in the second in the second phase of these reports.

September Guarantee

- 43 The final 2008/09 September Guarantee national dataset shows that the East Midlands is just 0.8% behind the national average for the Year 11 September Guarantee, placing us sixth out of nine regions. 93.4% of 16 year olds had been offered a place in post-16 education or training. This marks a 6.4% improvement on the regional position in 2007 (87% of learners with an offer).

Table 17 - September Guarantee 2008/09

	Y11 Guarantee				17 year old Guarantee			
	Offer made	Not ready for learning	No offer made	Not recorded	Offer made	Not ready for learning	No offer made	Not recorded
England	94.2%	2.9%	2.7%	0.2%	79.7%	9.6%	7.2%	3.4%
East Midlands	93.4%	5.1%	1.5%	0.0%	78.6%	16.8%	4.6%	0.0%
Derby City	93.0%	5.1%	1.9%	0.0%	78.2%	20.3%	1.5%	0.0%
Derbyshire	89.8%	8.4%	1.8%	0.0%	67.5%	30.7%	1.8%	0.0%
Leicester City	95.3%	3.4%	1.3%	0.0%	87.1%	8.7%	4.2%	0.0%
Leicestershire	95.3%	3.8%	0.8%	0.0%	88.7%	9.4%	1.9%	0.0%
Lincolnshire	94.5%	4.0%	1.5%	0.0%	73.7%	20.7%	5.6%	0.0%
Northamptonshire	92.5%	5.6%	1.9%	0.0%	65.8%	27.8%	6.4%	0.0%
Nottingham City	93.7%	4.1%	2.2%	0.0%	80.0%	13.2%	6.9%	0.0%
Nottinghamshire	93.9%	5.2%	0.9%	0.0%	78.2%	17.7%	4.1%	0.0%
Rutland	95.9%	2.5%	1.7%	0.0%	83.3%	16.7%	0.0%	0.0%

Source: Connexions via Department of Children Schools and Families NCCIS data system

- 44 In September 2008 Nottingham City achieved offer levels of 93.7% and 80.0% for Year 11 and Year 12 respectively. For the Year 11 guarantee this is 0.3 percentage points (pp) above and 0.4 pp below regional and national levels and 6th out of 9 LA's within East Midlands. For the Year 12 guarantee this is 1.3 pp and 0.3 pp above regional and national levels and is 4th out of 9 LA's within East Midlands.
- 45 For Year 11, of those without an offer 163 persons were recorded as 'Not ready for formal learning at this time' of which 97 were 'Going into employment without training to NVQ Level 2'. 87 were recorded as 'No offer Made', with 60 due to being 'YP has not applied for learning'.

Travel to learn patterns

Further Education

- 46 99 per cent of Nottingham resident 16-18 FE learners were learning at an FE institution within the East Midlands – 96 per cent within Nottingham City institutions. Some 30 residents choose to access FE provision outside of the region. This is usually due to proximity of institutions to the learner's place of residence, or proximity to parental work. In Table 18 below, the small

numbers in distant regions – coded in yellow, are accessing provision from an institution whose home region is as indicated. Usually the institution makes local provision available. Learners do not travel to far flung parts of the country.

Table 18: 16-18 FE learners by LA of residence and region of FE institution, 2007/08

LA of learner residence	Region of FE institution									Total resident 16-18 learners
	East of England	East Midlands	Greater London	North East	North West	South East	South West	West Midlands	Yorkshire & Humberside	
Derby	4	3,305	3		5	3	4	246	5	3,575
Derbyshire	17	7,921	9	2	879	6	6	617	251	9,708
Leicester	6	6,784	8		10	3	1	32	6	6,850
Leicestershire	13	5,868	7		252	6	15	930	7	7,098
Lincolnshire	461	6,527	78	2	13	20	10	20	1,269	8,400
Northamptonshire	252	7,514	19		68	312	11	235	13	8,424
Nottingham	4	5,052	6		1	2		7	10	5,082
Nottinghamshire	30	9,370	16	2	12	8	13	41	210	9,702
Rutland	10	536			2	3	5	3	3	562
Unknown	7	201	1		8	1		6	13	237

Source: 2007/08 ILR F05 returns (FE 0506-0708 Learner Drill down)

Table 19: Nottingham City and Nottinghamshire resident learners learning with East Midlands FE providers 2007/08

	Provider Name	Nottingham		Nottinghamshire	
		Learner numbers	%	Learner numbers	%
Derby City	Derby City Council			1	0.0
	Derby College	32	0.6	111	1.1
Derbyshire	Chesterfield College		0.0	51	0.5
Derbyshire	Derbyshire County Council		0.0	7	0.1
	South East Derbyshire College	12	0.2	120	1.2
	University of Derby, High Peak College		0.0	2	0.0
Leicester City	Leicester City Council		0.0	1	0.0
	Leicester College	5	0.1	7	0.1
Leicestershire	Brooksby Melton College	4	0.1	14	0.1
	Loughborough College	9	0.2	63	0.6
	South Leicestershire College		0.0	2	0.0
	Stephenson College	2	0.0	5	0.1
Lincolnshire	Grantham College	5	0.1	68	0.7
	Lincoln College	29	0.6	651	6.7
Northamptonshire	Northampton College		0.0	9	0.1
	Tresham Institute		0.0	1	0.0
	Moulton College F.E.C	1	0.0		0.0
Nottingham City	New College, Nottingham	2,637	51.9	2,134	22.0
	South Nottingham College	686	13.5	744	7.7
	Castle College, Nottingham	1,054	20.7	1,078	11.1
	Bilborough College	517	10.2	789	8.1
Nottinghamshire	North Nottinghamshire College	3	0.1	1,078	11.1
	West Nottinghamshire College	56	1.1	2,332	24.0
	Sutton Centre		0.0	19	0.2
	Dukeries College		0.0	82	0.8
	TNG Options		0.0	1	0.0
East Midlands Total		5,052	99.4	9,370	96.6

Source: 2007/08 ILR F05 returns (FE 0506-0708 Learner Drill down)

- 47 Only 157 Nottingham resident learners access their FE learning provision outside the City but stay in the region, some 56 of these went to West Nottinghamshire College in 2007/08. Lincoln College – at the Newark and Sherwood site attracted 29 learners and 32 learners went to Derby College. There are other small out flows of learners to other Local Authority areas in the region.
- 48 More than half of Nottingham City’s resident learners choose to learn at New College Nottingham (52%).

Schools Sixth Forms

- 49 This section provides travel to learn patterns of School Sixth Form Learners living in Nottingham City LA. The data has been extracted from the 2008/09 Schools Sixth Form Census.

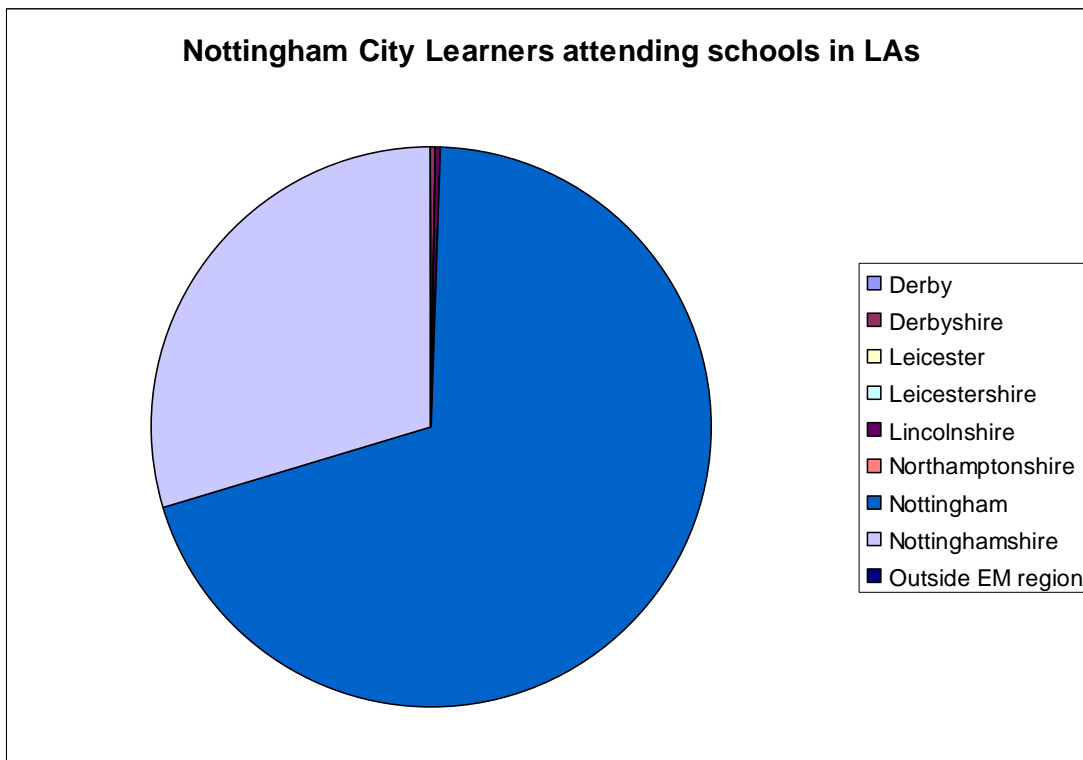
Table 20: Schools Sixth Form Learners Travel to Learn patterns, 2008/09

	Nottingham City LA		Nottinghamshire LA	
	Number	%	Number	%
Number of learners resident in LA	1167	100.0	7283	100
Number of learners travelling to learn in:				
Derby	0	0.0	1	0.0
Derbyshire	3	0.3	55	0.8
Leicester	0	0.0	0	0.0
Leicestershire	0	0.0	7	0.1
Lincolnshire	2	0.2	179	2.5
Northamptonshire	0	0.0	1	0.0
Nottingham	814	69.8	201	2.8
Nottinghamshire	348	29.8	6727	92.4
Outside EM region	0	0.0	112	1.5

Source: Schools Sixth Form Census 2008/09

- 50 The majority of Schools Sixth Form learners living in Nottingham City LA attended a Schools Sixth Form in their locality (69.8%). Just under a third of learners travelled to Schools Sixth Forms in Nottinghamshire (348 learners, 29.8%) but there were no other significant outflows to other areas within or outside of the region.

Figure 4: Schools Sixth Form Learners Travel to Learn patterns, 2008/09



Source: Schools Sixth Form Census 2008/09

16-18 Resident Learner Achievement

FE Achievements

Table 21: Aims achieved by learners resident in East Midlands local authorities by level, 2006/07-2007/08

	2006					2007				
	Full Level 2 aims	% of aims at Full Level 2	Full Level 3 aims	% of aims at Full Level 3	Total aims	Full Level 2 aims	% of aims at Full Level 2	Full Level 3 aims	% of aims at Full Level 3	Total aims
Leicestershire	1,014	13.6%	600	8.1%	7,445	1,282	14.6%	973	11.1%	8,804
Leicester City	379	3.4%	120	1.1%	11,263	781	5.5%	403	2.8%	14,153
Northamptonshire	1,220	12.7%	875	9.1%	9,633	1,373	12.7%	1,055	9.8%	10,781
Derbyshire	1,643	11.0%	1,205	8.1%	14,956	1,653	10.6%	1,350	8.7%	15,566
Derby City	465	8.2%	322	5.7%	5,659	516	8.8%	330	5.7%	5,838
Lincolnshire	1,428	11.6%	960	7.8%	12,327	1,510	11.1%	1,177	8.7%	13,583
Rutland	48	4.8%	45	4.5%	1,006	66	5.1%	66	5.1%	1,303
Nottinghamshire	1,377	9.6%	993	6.9%	14,363	1,661	10.1%	1,190	7.2%	16,484
Nottingham City	602	7.3%	310	3.8%	8,260	634	7.0%	429	4.8%	9,014
East Midlands	8176	9.6%	5,430	6.4%	84,912	9,476	9.9%	6,973	7.3%	95,526

Source: 2007/08 ILR F05 returns (FE 0506-0708 Success rates Drill down)

51 Table 21 shows the proportions of curriculum study at different levels taken by Nottingham City residents. The count is by learning aim. An individual may be studying a range of learning aims at more than one level. So these figures do not equate to learners, but to enrolments at a particular level on a particular course. The count also only relates to those achieving at **Full** Level 2 or 3. There will be a large number of enrolments on courses that are at Level 2 and 3 but where the total learning aims studied do not amount to a **Full** Level 2 or 3. This explains the relatively low proportions of achievements.

Apprenticeships Framework completions

52 Table 22 below shows the number of full Apprenticeship Frameworks achieved by Nottingham City learner residents. In LSC terms, an Apprenticeship is only achieved if the learner leaves with the full framework completed, including all the key skills and technical certificates in that particular framework. Several apprentices achieve only an NVQ, because their employer often does not see the benefit in the learner taking the other elements of the programme. Those learners are not included in the table below.

Table 22: 16-18 Apprenticeship Framework Completions by Programme level 2006/07 – 2007/08

Year	Programme Level	Nottingham City	East Midlands
2006/07	Apprenticeship	252	4,777
	Advanced Apprenticeship	68	1,520
	Total	320	6,297
2007/08	Apprenticeship	241	4,443
	Advanced Apprenticeship	71	1,483
	Total	312	5,926
2006/07 - 2007/08 % change	Apprenticeship	-4.4	-7.0
	Advanced Apprenticeship	4.4	-2.4
	Total	-2.5	-5.9

Source: ILR - WBL AND E2E DRILL DOWNS 2006/07 and 2007/08 (July 2007 and July 2008) Completions data

- 53 There has been a reduction in the number of Apprenticeship Frameworks achieved by Nottingham City resident learners in 2007/08 compared to 2006/07 (-2.5%). This corresponds to the reduction in participation. There was a considerable difference between Levels 2 and 3. Four percent fewer young people achieved a full framework in Apprenticeships (Level 2) in 2007/08 than in 2006/07, whereas in Advanced Apprenticeships (Level 3) there was a 4% increase in achievements. Nottingham City compares very favourably with the region in Advanced apprenticeships. Where the City saw an increase of 4% in achievements of a full framework, the region saw a decrease of 2.4%.

School Sixth Forms

- 54 As Table 23 below indicates, there has been a huge rise in the average point score of those learners achieving A Level grades in Nottingham City (73.6) between 2002 and 2006. This is the largest change in the region and is more than twice the regional (30) and national (35) average change.

Table 23: Average A-Level point score for candidates and entry by East Midlands local authority

	Per candidate			Per Entry		
	2002	2006	Difference	2002	2006	Difference
Derby City	237	256.1(r)	19.1	73	77.2(r)	4.2
Derbyshire	265.2	281.8(r)	16.6	75.3	76.9(r)	1.6
Leicester City	211.7	243.4(r)	31.7	67.9	72.8(r)	4.9
Leicestershire	247.8	277.4(r)	29.6	72.9	74.1(r)	1.2
Lincolnshire	275.3	304.6(r)	29.3	76.6	79.1(r)	2.5
Northamptonshire	236.4	268.2(r)	31.8	71.8	75.6(r)	3.8
Nottingham City	222.6	296.2(r)	73.6	70.9	77.1(r)	6.2
Nottinghamshire	234.4	260.3(r)	25.9	69.4	71.4(r)	2
Rutland(r)(r)	..
East Midlands	245.5	275.8(r)	30.3	72.6	75.4(r)	2.8
England	254.7	289.5(r)	34.8	76	80.2(r)	4.2

Source: DCSF, (http://www.dcsf.gov.uk/inyourarea/statics/gor_E_12.shtml)

Part 2 - Progress towards PSA targets at 19

55 The position of learners at age 19 in terms of the PSA target in any local authority is strongly influenced by the achievements in that local authority's schools at 16. These figures are shown in Table 24 below.

Table 24: GCSE achievements by 15 year old pupils in the East Midlands, 2007/08

	Number of 15 year old pupils			% achieving 5 A*-C grade GCSEs			% achieving 5 A*-C grades, incl. English and Maths		
	Boys	Girls	Total	Boys	Girls	Total	Boys	Girls	Total
Derby City	1,540	1,519	3,059	63.2	63.9	63.6	46.8	51.9	49.3
Derbyshire	4,747	4,614	9,361	57.7	68.1	62.8	44.0	52.4	48.2
Leicester City	1,835	1,639	3,474	52.2	58.9	55.3	37.1	42.7	39.7
Leicestershire	3,996	3,707	7,703	59.2	69.8	64.3	48.3	55.3	51.7
Lincolnshire	4,297	4,213	8,510	67.1	74.0	70.5	48.9	55.6	52.2
Northamptonshire	4,321	4,088	8,409	55.0	63.7	59.2	41.1	49.4	45.1
Nottingham City	1,444	1,436	2,880	54.5	61.9	58.2	31.6	37.0	34.3
Nottinghamshire	4,963	4,717	9,680	55.5	66.5	60.9	38.9	47.4	43.0
Rutland	238	227	465	69.7	71.8	70.8	58.8	58.6	58.7
East Midlands	27,381	26,160	53,541	58.4	67.2	62.7	43.2	50.5	46.8
England	334,579	319,229	653,808	60.4	69.4	64.8	42.9	51.9	47.3

Source: DCSF, (<http://www.dcsf.gov.uk/rsgateway/DB/SFR/s000826/index.shtml>, Table 18a)

- 56 The proportion of young people in Nottingham City (58.2%) achieving 5 GCSEs A*-C (the equivalent of a Level 2) is considerably below both the regional (62.7%) and national average (64.8%). Where Level 2 including English and Maths is examined, this difference increases (34.3% compared 46.8% and 47.3% respectively). However, the City has made considerable improvements in these proportions over the last three years, and remains the most improved Local Authority in the region in this regard.
- 57 Achievement by boys remains considerably lower than girls in most areas.

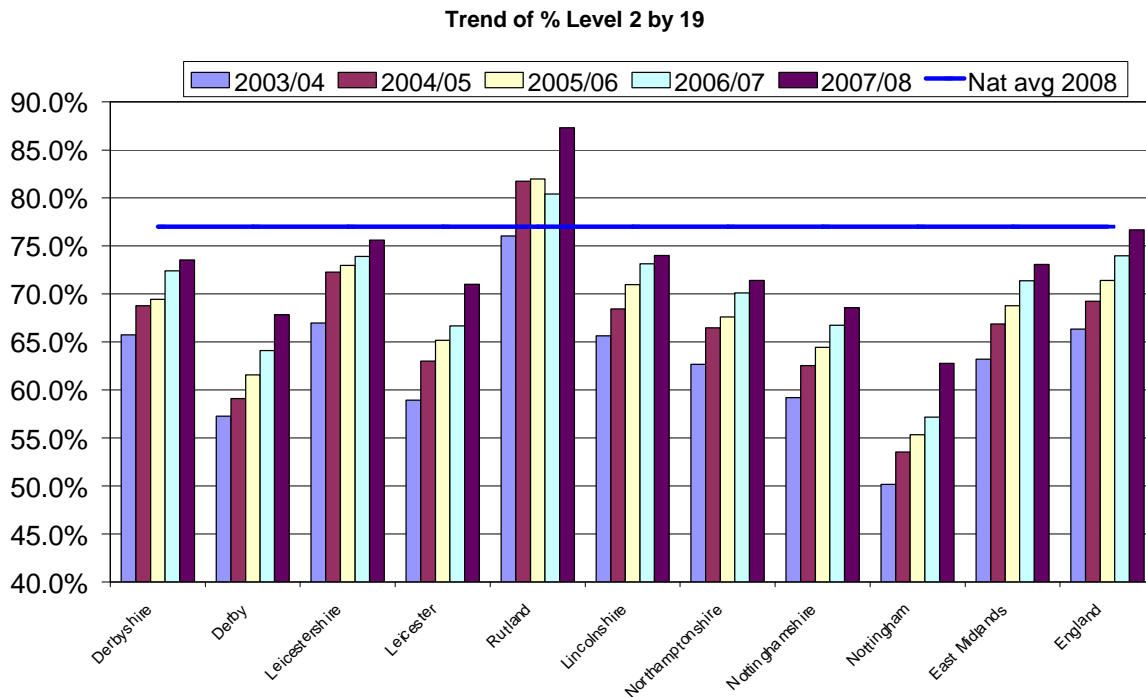
Table 25: Achievement of Level 2 by 19: Nottingham City. Trend data from 2003/4 to 2008/09

	Aged 19 at the end of 2003/04	Aged 19 at the end of 2004/05	Aged 19 at the end of 2005/06	Aged 19 at the end of 2006/07	Aged 19 at the end of 2007/08	Aged 19 at the end of 2008/09	Aged 19 at the end of 2009/10
LEA Name	by age 19	by age 19	by age 19	by age 19	by age 19	by age 18	by age 17
Derbyshire	65.7%	68.8%	69.4%	72.4%	73.6%	71.7%	65.0%
Derby City	57.3%	59.1%	61.6%	64.1%	67.8%	65.9%	60.3%
Leicestershire	67.0%	72.3%	73.0%	73.9%	75.6%	74.4%	68.4%
Leicester City	58.9%	63.0%	65.2%	66.7%	71.0%	67.6%	63.1%
Rutland	76.0%	81.8%	82.0%	80.4%	87.3%	83.4%	81.3%
Lincolnshire	65.6%	68.4%	71.0%	73.1%	74.0%	73.8%	68.5%
Northamptonshire	62.7%	66.5%	67.6%	70.1%	71.4%	70.8%	62.9%
Nottinghamshire	59.2%	62.5%	64.4%	66.8%	68.6%	66.4%	60.2%
Nottingham City	50.2%	53.5%	55.3%	57.2%	62.8%	59.9%	55.0%
East Midlands	63.2%	66.9%	68.8%	71.4%	73.1%	70.7%	64.3%
England	66.3%	69.2%	71.4%	74.0%	76.7%	74.8%	67.9%

Source: DCSF Website: Level2andlevel3attainmentin each LEAApr2009.xls

58 There has been a considerable rise in the proportion of young people who gain a Full Level 2 by 19 over the last five years in the City. The proportion has risen by 12.6 percentage points. This is better than both the regional averages (9.9 percentage points) and those nationally (10.4 percentage points) and reflects the improvements being made in schools in the City.

Figure 5: Trends in Level 2 by 19 by Local Authority Learners



Source: DCSF Website: Level2andlevel3attainmentin each LEAApr2009.xls

59 However, as **Figure 5** above shows the City is still considerably below the national average.

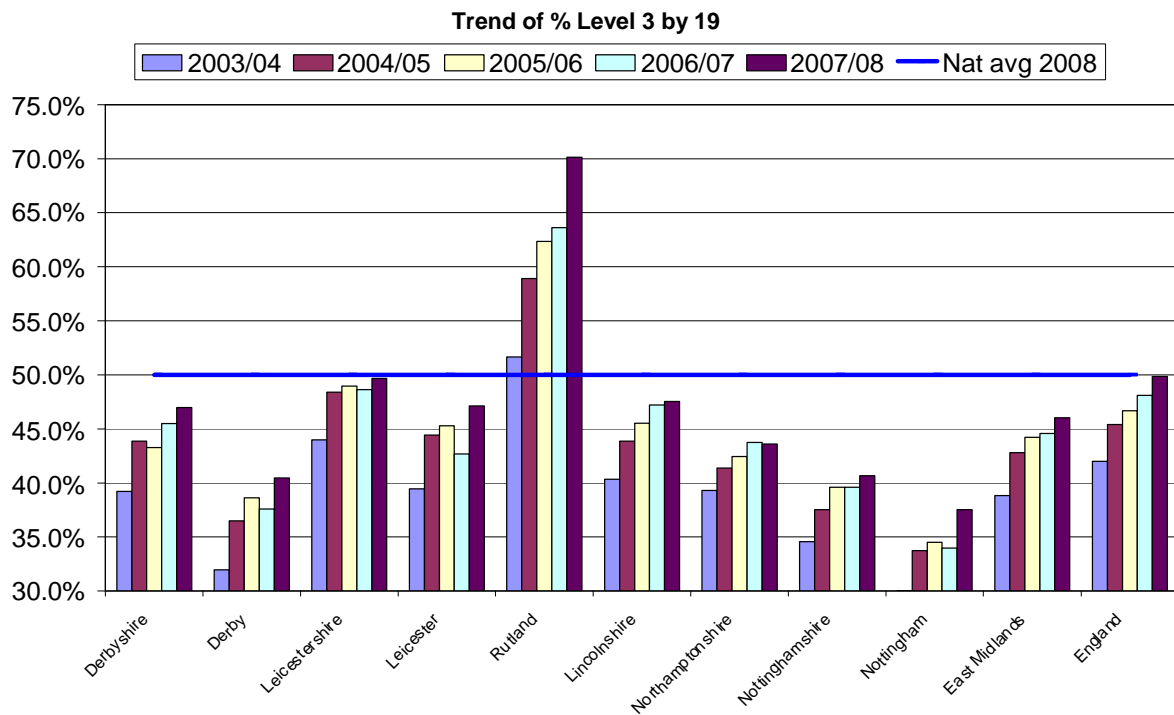
Table 26: Achievement of Level 3 by 19: Nottingham City. Trend data from 2003/4 to 2008/09

Region	19 in 2003/04	29 in 2004/05	19 in 2005/06	19 in 2006/07	19 in 2007/08	Aged 19 in 2008/09	Aged 19 in 2009/10
	by age 19	by age 19	by age 19	by age 19	by age 19	by age 18	by age 17
Derbyshire	39.2%	43.9%	43.3%	45.5%	47.0%	41.7%	16.8%
Derby City	31.9%	36.5%	38.6%	37.6%	40.5%	35.2%	7.5%
Leicestershire	44.0%	48.4%	49.0%	48.6%	49.7%	45.7%	24.0%
Leicester City	39.5%	44.4%	45.3%	42.7%	47.1%	37.9%	18.5%
Rutland	51.7%	58.9%	62.4%	63.6%	70.1%	61.2%	13.1%
Lincolnshire	40.3%	43.9%	45.5%	47.2%	47.6%	42.7%	15.8%
Northamptonshire	39.3%	41.4%	42.4%	43.8%	43.6%	40.3%	14.5%
Nottinghamshire	34.6%	37.5%	39.6%	39.6%	40.7%	35.6%	16.1%
Nottingham City	30.0%	33.7%	34.5%	34.0%	37.5%	32.7%	12.1%
East Midlands	38.8%	42.8%	44.2%	44.6%	46.0%	40.6%	16.3%
England	42.0%	45.4%	46.7%	48.1%	49.8%	43.4%	16.9%

Source: DCSF Website: Level2andlevel3attainmentin each LEAApr2009.xls

60 There is a similar picture with Level 3 at 19. There has been a 7.5 percentage point rise in the proportion of young people who gain a Full Level 3 by 19 over the last five years in the City. This is a similar rate of improvement to the regional averages (7.2 percentage points) and national average (7.8 percentage points) However, as Figure 6 below shows, the City is still considerably below the national average.

Figure 6: Trends in Level 3 by 19 by Local Authority learners



Source: DCSF Website: *Level2andlevel3attainmentin each LEAApr2009.xls*

Part 3 - Provision within Nottingham City

61 This section is intended to show how post-16 providers (excluding those for Apprenticeships) are delivering against their contracts and the quality of their delivery. It is important information for planning the number of commissioned places in 2010/1011, since learning places will need to be planned for all those who choose to learn within the City's institutions.

Further Education providers

FE Participation

62 In 2008/09, twenty percent of the region's Further Education learners studied within Nottingham City. Of these, New College Nottingham is responsible for 44% of the provision in FE within the City.

Table 27: Number of 16-18 FE learners by level for each provider in Nottingham City, 2006/07-2008/09

Provider Name	2006/07					2007/08				
	Full Level 2	%	Full Level 3	%	Total Learners	Full Level 2	%	Full Level 3	%	Total Learners
Billborough College	0	0	1,359	90.1	1,509	0	0	1,571	90.8	1,730
New College, Nottingham	1,171	24.3	1,780	36.9	4,820	1,081	20.9	1,738	33.7	5,163
Nottingham Trent University										
South Nottingham College	257	16.8	528	34.5	1,532	297	19.1	585	37.6	1,557
Castle College, Nottingham	618	21.5	699	24.4	2,870	628	22.5	647	23.2	2,793
Nottingham City LA	2,046	19.1	4,366	40.7	10,731	2,006	17.8	4,541	40.4	11,243
East Midlands Total	12,662	23.7	18,559	34.7	53,446	12,724	22.6	20,188	35.9	56,249

Provider Name	2008/09				
	Full Level 2	%	Full Level 3	%	Total Learners
Bilborough College	0	0	1,571	89.3	1,760
New College, Nottingham	1,109	22.8	1,916	39.4	4,865
Nottingham Trent University	4	2.7	133	89.9	148
South Nottingham College	300	18.8	675	42.3	1,597
Castle College, Nottingham	676	24.4	734	26.5	2,768
Nottingham City LA	2,089	18.8	5,029	45.2	11,138
East Midlands Total	12,951	23.1	21,755	38.9	55,980

Sources: ILR - FE Learners Full Level 2 and Full Level 3 Drill Down 2005-06 - 2007/08 and 08/09 data - Dashboard 0809-0809 - LR FE - Learner.xls

NB: Total Learners also includes learners who are not undertaking L2/L3 qualifications

- 63 There was a fall in the proportion of young people studying at Level 2 in FE colleges between 2006/07 and 2007/08, although this has increased slightly in 2008/09 (year to date figures). Given that the City is below regional and national averages for achievement of Level 2 by 19 (the PSA Target), and that achievement of Level 2 by 16 is also below national and regional averages, this is an area for improvement in the future.
- 64 By contrast, the proportion of young people taking a Level 3 within the FE system has improved considerably since 2006. There has been a 13% increase in this proportion over this time scale. However the 2008/0-9 figures are not final end of year totals and must be viewed with some caution.

Table 28: Number of 16-18 FE learners by provider in Nottingham City with a learning difficulty and/or disability (LLDD), 2007/08

LA	Provider	LLDD	
Nottingham City	Learner numbers	No.	% of LLDD with each Provider
	Bilborough College	286	16.5
	New College, Nottingham	741	14.3
	Castle College, Nottingham	473	16.9
	South Nottingham College	230	14.8
Nottingham City Total – Overall Providers		1730	15.4

Source: 2007/08 ILR F05 returns (FE 0506-0708 Learner Drill down)

- 65 Castle College and Bilborough College had a slightly higher proportion of learners with learning difficulties and/or disabilities in 2007/08 compared to other FE providers in Nottinghamshire Local Authority Area funded by Nottinghamshire LSC

Table 29: Numbers of East Midlands 16-18 FE learners by their district of residence by provider in Nottingham City, 2007/08

LA of provider		Derby City	Derbyshire	Leicester City	Leicestershire	Lincolnshire	Northamptonshire	Nottingham City	Nottinghamshire	Rutland	blank	Total East Midlands learners	Learners from outside of East Midlands	Full Total of learners
Nottingham City	Bilborough College	88	324	0	3	0	0	517	789	0	7	1,728	2	1730
	New College, Nottingham	28	259	4	33	16	2	2,636	2,134	0	19	5,131	32	5163
	South Nottingham College	14	33	0	15	5	3	686	744	0	4	1,504	53	1557
	Castle College, Nottingham	43	496	3	26	18	4	1,054	1,078	0	9	2,731	62	2793
Nottingham City LA total	173	1112	7	77	39	9	4,893	4745	0	39	11,094	149	11243	

Source: 2007/08 ILR F05 returns (FE 0506-0708 Learner Drill down)

66 In terms of planning places for learning and learners within the City's providers, whilst by far the greatest proportion (44%) come from within the City itself, on 2007/08 figures, the Local Authority will need to ensure there are places available for learners from Nottinghamshire (43%), Derbyshire (10%) and for small numbers of learners from other local authorities, the majority of whom choose to study at New College Nottingham and Castle Colleges. It is likely that these choices are made on the basis of curriculum availability as well as travel patterns. More detail on this issue will be provided in the curriculum update of these reports.

Table 30: Percentage of East Midlands 16-18 FE learners by their district of residence by provider in Nottingham City, 2007/08

LA of provider		Derby City	Derbyshire	Leicester City	Leicestershire	Lincolnshire	Northamptonshire	Nottingham City	Nottinghamshire	Rutland	blank	Total East Midlands learners	Learners from outside of East	Full Total of learners
Nottingham City	Bilborough College	5.1	18.8	0.0	0.2	0.0	0.0	29.9	45.7	0.0	0.4	99.9	0.1	100.0
	New College, Nottingham	0.5	5.0	0.1	0.6	0.3	0.0	51.4	41.6	0.0	0.4	99.3	0.6	100.0
	South Nottingham College	0.9	2.2	0.0	1.0	0.3	0.2	45.6	49.5	0.0	0.3	96.6	3.4	100.0
	Castle College, Nottingham	1.6	18.2	0.1	1.0	0.7	0.1	38.6	39.5	0.0	0.3	97.8	2.2	100.0
Nottingham City LA total	1.6	10.0	0.1	0.7	0.4	0.1	44.1	42.8	0.0	0.4	98.7	1.3	100.0	

Source: 2007/08 ILR F05 returns (FE 0506-0708 Learner Drill down)

Table 31: Numbers of 16-18 FE learners by region of residence for providers in Nottingham City, 2007/08

	Bilborough College		New College		South Nottingham College		Castle College		Nottingham City area provider total	
	Number	%	Number	%	Number	%	Number	%	Number	%
East of England	0	0.0%	3	0.1%	2	0.1%	4	0.1%	9	0.1%
East Midlands	1728	99.9%	5131	99.3%	1504	96.6%	2731	97.8%	11094	98.7%
Greater London	1	0.1%	1	0.01%	0	0.0%	3	0.1%	5	0.04%
North East	0	0.0%	0	0.0%	0	0.0%	0	0.0%	0	0.0%
North West	0	0.0%	0	0.0%	0	0.0%	4	0.1%	4	0.04%
South East	0	0.0%	4	0.1%	10	0.6%	2	0.1%	16	0.1%
South West	0	0.0%	3	0.1%	0	0.0%	4	0.1%	7	0.1%
West Midlands	0	0.0%	0	0.0%	10	0.6%	8	0.3%	18	0.2%
Yorkshire & Humber	1	0.1%	7	0.1%	11	0.7%	12	0.4%	31	0.3%
Unknown			14	0.3%	20	1.3%	25	0.9%	59	0.5%
Total learners	1730	100	5163	100	1557	100	2793	100	11243	100

Source: 2007/08 ILR F05 returns (FE 0506-0708 Learner Drill down) - NB: Table 31 does not include learners where their region of residence cannot be determined.

FE Achievements

- 67 From 2006/07 to 2007/08, success rates at Level 2 in all the FE providers in the City have improved, but in 2007/08 those at New College and Castle College were still below regional averages. This is a matter for discussion.
- 68 The picture is not quite as favourable when the Level 3 position is examined. Level 3 success rates at both New College and Castle College fell between 2006/07 and 2007/08 and both remain below regional averages. In the case of Castle College this was by 10 percentage points. These figures will need some discussion.

Table 32: Achievements by provider at Level 2 and 3 2006/07

	2006/07					
	Full Level 2		Full Level 3		Total	
	Achievements	Success rate	Achievements	Success rate	Achievements	Success rate
Bilborough College	-	-	-	-	5,882	87.6%
New College, Nottingham	723	63.8%	475	67.2%	7,489	69.1%
South Nottingham College	195	80.6%	178	68.7%	2,579	79.5%
Castle College, Nottingham	360	67.9%	258	66.2%	3,729	75.3%
East Midlands average	7,587	69.6%	4,905	64.3%	79,184	75.8%

Source: ILR - EM-FE Success Rates-Detail- 0506-0708.xls

Table 33: Achievements by provider at Level 2 and 3 2007/08

	2007/08					
	Full Level 2		Full Level 3		Total	
	Achievements	Success rate	Achievements	Success rate	Achievements	Success rate
Bilborough College	-	-	-	-	6,682	86.3%
New College, Nottingham	710	67.8%	522	67.0%	8,267	74.1%
South Nottingham College	223	81.1%	277	79.1%	2,570	81.7%
Castle College, Nottingham	452	73.7%	312	64.7%	4,062	79.6%
East Midlands average	9,050	74.0%	6,638	74.0%	90,116	78.9%

Source: ILR - EM-FE Success Rates-Detail- 0506-0708.xls

FE Funding

69 16-18 funding in FE for Nottingham City has increased over the last three years. All providers saw an increase between 2006/07 and 2007/08, the largest of which was in Bilborough College. In the General FE colleges, a large proportion of the increase was due to a move by young people to increasing Full time participation.

70 In 2008/09, the LSC introduced its new Demand Led Funding methodology and this was applied to the allocations process for funding FE provision in that year. For this reason, direct comparisons are not possible between 2007/08 funding levels and those in 2008/09. Further information about the Demand Led Funding methodology is available via the LSC web site (<http://www.lsc.gov.uk/providers/funding-policy/demand-led-funding/>).

Table 34: 16-18 FE funding, 2006/07 – 2008/09

Provider	2006/07	% change from previous year	2007/08	% change from previous year	2008/09
	£		£		£
Bilborough College	£6,640,534	11.8%	£7,952,877	19.8%	£8,195,711
New College, Nottingham	£19,998,336	6.7%	£20,868,121	4.3%	£20,200,000
South Nottingham College	£5,642,189	13.5%	£6,259,077	10.9%	£6,314,564
Castle College, Nottingham	£10,787,388	-	£11,571,438	7.3%	£10,310,577
Nottingham City total	£43,068,447	31.7%	£46,651,513	8.3%	£45,020,852

Source: 2007/08 ILR F05 returns (FE 0506-0708 Learner Drill down) 2008/09 Funding Allocation information from 'Report Tables.xls'

Schools Sixth Forms

S6F Participation

71 Table 35 shows Nottinghamshire Schools Sixth Form participation from 2005/06 to 2008/09. Trends are mixed across individual schools.

Table 35: Numbers of Year 12-14 students in Nottinghamshire School Sixth Forms, 2005/06-2008/09

	2005/06	2006/07	2007/08	2008/09
Kirkby College	54	52	52	50
Ashfield Comprehensive School	416	465	510	589
The Manor School	157	148	152	183
Garibaldi College	175	173	176	190
Quarrydale School	88	56	68	86
Sutton Centre Community College	113	137	131	126
The Meden School and Technology College	151	154	135	130
Redhill School	152	163	155	180
Arnold Hill School and Technology College	225	221	235	241
Wheldon School and Sports College	80	81	98	101

Carlton le Willows School	210	215	204	244
Alderman White School and Language College	52	50	34	38
Bramcote Hills Sport and Community College	130	90	73	89
Chilwell School	132	139	127	160
Eastwood Comprehensive School	109	78	127	146
Kimberley Comprehensive School	144	139	134	155
The West Bridgford School	253	261	266	280
Rushcliffe School	167	196	220	244
Valley Comprehensive School	184	175	179	198
Portland School	88	90	85	138
The Grove School	86	104	110	141
Toot Hill School	251	250	247	258
Joseph Whitaker School	182	195	173	182
Colonel Frank Seely Comprehensive School	155	132	132	134
Harry Carlton Comprehensive School	191	195	196	197
Serlby Park A 3-18 Business and Enterprise Learning Community	55	50	36	51
The Holgate Comprehensive School	121	136	137	142
The Dukeries College	121	125	144	152
Dayncourt School Specialist Sports College	135	147	111	107
Tuxford School	230	226	210	219
South Wolds Community School	161	178	159	136
The Elizabethan High School	158	156	158	156
The Brunts School	231	249	226	262
The Queen Elizabeth's (1561) Endowed School	93	108	99	107
Retford Oaks High School	100	83	121	149
Magnus CofE School	132	126	117	123
The Becket School	205	220	229	222
The National School, a CofE Technology College	88	73	93	118
Minster School	336	326	323	388
Christ The King School	95	107	88	77
All Saints RC Comprehensive School	194	183	183	153
George Spencer Foundation School and Technology College	217	209	179	205

Source: Schools Sixth Form Census Data

S6F Achievement

72 Overall the City's average A Level point score per student has increased over the last three years in a steady fashion in two providers - Bilborough College and New College Nottingham. The other providers have seen either a fluctuating picture or a steady decline in the average points score per student. The School Sixth Forms have shown the most unstable picture and this will be an issue that needs discussion.

Table 36: 'A' Level point scores per candidate and per entry by provider in Nottingham City, 2008

	Average point score per student			Average point score per examination entry		
	2006	2007	2008	2006	2007	2008
Local Authority Average	729.6	748.7	777.6	204	204.7	202.7
LSC Average	690.9	709.2	726.7	196.1	198	199.2
England Average	721.5	731.2	740	206.2	207.5	209.4
Bilborough College	918.2	926.9	938.4	207.8	206.2	203.8
Djanogly City Academy Nottingham	382.7	442.9	372.9	155	174.1	180
New College Nottingham	624.3	650.3	673	202.8	205.5	202.7
The Nottingham Bluecoat School and Technology College	771.1	810.8	650.7	194.7	190.6	185.3
The Nottingham Emmanuel School	N/A	N/A	-	N/A	N/A	-
The Trinity Catholic School	752.1	751	740	210.6	212.9	214.3

Source: DCSF, (<http://www.dcsf.gov.uk/performance/tables/>) < Results withheld to protect confidentiality.

S6F Funding

73 Only 2008/09 funding information is available at this time. More detail, including 2009/10 funding allocations figures will be available in the next phase of the reports.

Table 37: 2008/09 School Sixth Form funding in Nottingham City

School Sixth Form	2008/09 Total funding allocation
The Nottingham Emmanuel School	£498,636
The Nottingham Bluecoat School and Technology College	£1,296,852
The Trinity Catholic School	£1,047,087
Nottingham City total	£2,842,575

Source: 2008/09 LSC School Sixth Form funding allocations

Apprenticeships

Apprenticeships Participation

74 This section provides information on the number of learners participating on Apprenticeships within the Nottinghamshire area and the Providers funded to deliver that learning. The data presents detailed information about those providers that are funded by Nottinghamshire LSC. However, some of these providers may not *deliver* the learning in the Nottinghamshire area and due to the complexities in how this data is constructed it is not possible at this stage

to provide a breakdown of the delivery location of each provider for individual learners.

Table 38: Number of 16-18 learners undertaking Apprenticeships with Providers funded by Nottinghamshire LSC, 2007/08

Provider	2007/08				Total
	Apprenticeship		Advanced Apprenticeship		
	No.	%	No.	%	
Access Training (East Midlands) Ltd	63	3.2	34	4.1	97
Anything Random Limited	13	0.6	75	9.1	88
C L G (Great Britain) Limited	8	0.4	0	0	8
Carter & Carter Group Plc	61	3.1	0	0	62
Castle College, Nottingham	24	1.2	41	4.9	65
Charnwood Training Consultants Limited	36	1.8	6	0.7	42
Constant Browning Edmonds Limited	17	0.9	3	0.3	20
Empower Training Services Limited	9	0.4	240	28.8	248
Enterprise & Innovation Zone Limited	2	0.1	0	0	2
Honda Motor Europe Limited					
In Training (CBE) Ltd	2	0.1	1	0.1	2
Intec Business Colleges Plc	11	0.6	3	0.4	14
JHP Group Limited	85	4.3	37	4.4	122
FTC Kaplan Limited	-	-	-	-	-
Kaplan Financial Limited	12	0.6	20	2.3	32
HCTC Limited	-	-	-	-	-
Lincoln College	49	2.5	5	0.5	53
Mark Bremner	-	-	-	-	0
Millbrook Management Services Limited	30	1.6	24	2.8	54
New College, Nottingham	221	11.3	44	5.3	265
Newcastle College Construction Limited					
Newark And Sherwood College	-	-	-	-	0
NHTA Limited	118	6.1	20	2.4	138
North Nottinghamshire College	245	12.6	47	5.7	293
Nottingham Engineering Training Association Limited	-	-	-	-	-
North Warwickshire and Hinckley College	1	0	0	0	1
Nottingham City Council	8	0.4	0	0	8
Nottinghamshire County Council	21	1.1	49	5.9	71
Orient Gold Limited	9	0.5	0	0	9
Positive Outcomes Ltd	72	3.7	33	4	105
Protocol Skills Limited	44	2.2	3	0.3	47
Red Apple Community Trust Limited	2	0.1	0	0	2
Sheffield Trainers Limited	96	4.9	11	1.4	107
South Nottingham College	34	1.7	2	0.2	36
Stephenson College	144	7.4	8	0.9	152
Strategic Training Solutions (Mansfield)	79	4	6	0.7	84

Limited					
The Bassetlaw Training Agency Limited	22	1.1	1	0.2	23
The Hair And Beauty Company (UK) Limited	58	3	8	0.9	66
Toyota(G.B.) Plc					
Triangle Training Ltd	97	5	34	4	131
TWL Training Ltd					
VT Training Plc	48	2.5	23	2.8	72
West Nottinghamshire College	210	10.8	56	6.8	266
Total Nottinghamshire LSC	1951	100	834	100	2785

Source: ILR - WBL and E2E 2007/08 Drill Downs. NB: The data shows an average of learners undertaking an Apprenticeship in a given month over a 12 month period.

Table 39: Number of 16-18 learners undertaking Apprenticeships with Providers funded by Nottinghamshire LSC, 2008/09

Provider	2008/09				Total
	Apprenticeship		Advanced Apprenticeship		
	No.	%	No.	%	
Access Training (East Midlands) Ltd	71	3	37	3.8	108
Anything Random Limited		0		0	0
C L G (Great Britain) Limited	2	0.1	0	0	2
Carter & Carter Group Plc		0		0	0
Castle College, Nottingham	58	2.5	117	12	175
Charnwood Training Consultants Limited	30	1.3	0	0	30
Constant Browning Edmonds Limited		0		0	0
Empower Training Services Limited	6	0.3	244	25	251
Enterprise & Innovation Zone Limited	2	0.1	0	0	2
Honda Motor Europe Limited	95	4	22	2.2	116
In Training (Cbe) Ltd	7	0.3	2	0.2	10
Intec Business Colleges Plc	21	0.9	2	0.2	23
JHP Group Limited	73	3.1	41	4.2	114
FTC Kaplan Limited		0		0	0
Kaplan Financial Limited	9	0.4	18	1.8	27
HCTC Limited		0		0	0
Lincoln College		0		0	0
Mark Bremner	3	0.1	2	0.2	5
Millbrook Management Services Limited	39	1.7	11	1.1	50
New College, Nottingham	215	9.1	42	4.3	257
Newcastle College Construction Limited	88	3.7	1	0.1	89
NHTA Limited	113	4.8	19	2	132
North Nottinghamshire College	200	8.5	65	6.6	264
Nottingham Engineering		0		0	0

Training Association Limited					
North Warwickshire And Hinckley College	2	0.1	0	0	2
Nottingham City Council	7	0.3	0	0	7
Nottinghamshire County Council	20	0.8	41	4.2	61
Orient Gold Limited	202	8.5	8	0.8	209
Positive Outcomes Ltd	94	4	24	2.4	118
Protocol Skills Limited	42	1.8	5	0.5	47
Red Apple Community Trust Limited		0		0	0
Sheffield Trainers Limited	104	4.4	11	1.1	114
South Nottingham College	75	3.2	8	0.8	83
Stephenson College	128	5.4	14	1.5	142
Strategic Training Solutions (Mansfield) Limited	76	3.2	8	0.8	84
The Bassetlaw Training Agency Limited	36	1.5	6	0.6	42
The Hair And Beauty Company (Uk) Limited	63	2.6	6	0.6	69
Toyota(G.B.) Plc	100	4.3	52	5.3	152
Triangle Training Ltd	105	4.4	66	6.8	171
TWL Training Ltd	2	0.1	2	0.2	4
VT Training Plc	-	-	-	-	-
West Nottinghamshire College	272	11.5	103	10.6	375
Total Nottinghamshire LSC	2360	100	976	100	3336

NB: The data shows an average of learners undertaking an Apprenticeship in a given month over a 12 month period. Source: ILR - WBL and E2E 2007/08 Drill Downs, 'In Learning' Data ILR Employer Responsive Drill Downs 2008/09, Period 8 (March 2009)

75 West Nottinghamshire College, North Nottinghamshire College, New College, Nottingham, Orient Gold Limited, Empower Training Services Limited, Castle College, Nottingham, Toyota (G.B.) Plc, Triangle Training Ltd and Stephenson College were some of the main providers delivering Apprenticeships funded by Nottinghamshire LSC. Compared with March in 2008, there has been a increase in participation in 16-18 Apprenticeships. This indicates that despite the difficult economic conditions employers in Nottinghamshire are working to maintain employed places for young people.

Apprenticeships: Participation by Learners with Learning Difficulties and/or Disabilities

76 Table 40 provides a breakdown of providers funded by Nottinghamshire LSC in 2007/08 that had learners with learning difficulties and/or disabilities undertaking Apprenticeships. The largest providers (those with >5% of their learners having LDD) are shaded in yellow. In 2007/08 some 4.5% of Apprentices were identified as having Learning Difficulties/Disabilities.

Table 40: Number of 16-18 Apprenticeship learners with a learning difficulty and/or disability (LLDD), by Providers funded by Nottinghamshire LSC, 2007/08

Provider	2007/08 - LLLD	
	No.	%
Access Training (East Midlands) Ltd	34	21.7
Anything Random Limited	1	0.8
C L G (Great Britain) Limited	3	1.6
Carter & Carter Group Plc	1	0.5
Castle College Nottingham	3	1.8
Charnwood Training Consultants Limited	1	0.7
Constant Browning Edmonds Limited	7	4.2
Empower Training Services Limited	25	15.7
Enterprise & Innovation Zone Limited	0	0
In Training (CBE) Ltd	1	0.3
Intec Business Colleges Plc	0	0
JHP Group Limited	22	13.8
Kaplan Financial Limited	0	0
Lincoln College	2	1
Mark Bremner	0	0
Millbrook Management Services Limited	8	5.1
New College, Nottingham	1	0.3
NHTA Limited	4	2.4
North Nottinghamshire College	6	3.7
North Warwickshire And Hinckley College	0	0
Nottingham City Council	0	0
Nottinghamshire County Council	0	0
Orient Gold Limited	0	0
Positive Outcomes Ltd	0	0
Protocol Skills Limited	1	0.4
Red Apple Community Trust Limited	0	0
Sheffield Trainers Limited	2	1
South Nottingham College	1	0.6
Stephenson College	1	0.6
Strategic Training Solutions (Mansfield) Limited	7	4.5
The Bassetlaw Training Agency Limited	2	1.5
The Hair And Beauty Company (UK) Limited	11	7.2
Triangle Training Ltd	10	6.1
VT Training Plc	2	1.5
West Nottinghamshire College	5	3.2
Nottinghamshire LSC Total	158	100

NB: The data shows an average of learners undertaking an Apprenticeship in a given month over a 12 month period. Source: ILR - WBL and E2E 2007/08 Drill Downs, 'In Learning' Data

- 77 Providers with a higher proportion of learners with learning difficulties and/or disabilities are: Access Training (East Midlands) Ltd, Empower Training Services Limited and JHP Group Limited.

Apprenticeships Achievements

- 78 Table 41 presents overall 2007/08 success rates for Apprenticeship delivery by Providers funded by Nottinghamshire LSC. 41% of Apprenticeship providers who deliver within Nottinghamshire had overall success rates above the regional average. These are highlighted in yellow in the table below. Of the FE Colleges, only West Nottinghamshire College had a success rate above the regional average of 65%. There are a variety of reasons for this, much of which can be attributed to the fact that these figures only reflect the achievement of the full framework. Many learners, with the support of their employer may have chosen only to complete NVQs rather than the full framework. However, the success rates for colleges need careful monitoring.

Table 41: 2007/08 Apprenticeship Framework Overall Success Rates, Providers funded by Nottinghamshire LSC.

PROVIDER	Apprenticeships		Advanced Apprenticeships		Overall	
	Frameworks	Overall Success rate	Frameworks	Overall Success rate	Frameworks	Overall Success rate
Access Training (East Midlands) Ltd	36	59%	18	69%	54	62%
C L G (Great Britain) Limited	6	38%	0	0%	6	35%
Carter & Carter Group Plc	1	100%	-	-	1	100%
Charnwood Training Consultants Limited	53	70%	2	33%	55	67%
Constant Browning Edmonds Limited	30	81%	3	100%	33	83%
Empower Training Services Limited	15	65%	44	67%	59	66%
Intec Business Colleges Plc	9	64%	3	75%	12	67%
JHP Group Limited	62	79%	15	63%	77	75%
Lincoln College	4	44%	1	100%	5	50%
Millbrook Management Services Limited	25	81%	8	67%	33	77%
New College, Nottingham	104	63%	12	67%	116	63%
NHTA Limited	52	63%	5	38%	57	59%
North Nottinghamshire College	101	60%	21	66%	122	61%
Nottingham City Council	-	-	-	-	-	-
Nottinghamshire County Council	7	88%	15	79%	22	81%
Positive Outcomes Ltd	28	55%	11	65%	39	57%

Protocol Skills Limited	35	49%	0	0%	35	48%
Sheffield Trainers Limited	80	54%	6	60%	86	54%
South Nottingham College	14	50%	0	0%	14	47%
Stephenson College	35	34%	7	88%	42	38%
Strategic Training Solutions (Mansfield) Limited	38	50%	3	100%	41	52%
The Bassetlaw Training Agency Limited	3	18%	2	67%	5	25%
The Hair And Beauty Company (UK) Limited	36	68%	4	80%	40	69%
TNG Network Limited	-	-	-	-	-	-
Triangle Training Ltd	53	75%	5	71%	58	74%
West Nottinghamshire College	90	73%	3	38%	93	70%
VT Training Plc	54	58%	9	36%	63	53%
Anything Random Limited	9	50%	22	71%	31	62%
Kaplan Financial Limited	7	88%	21	88%	28	82%
Castle College Nottingham	6	55%	2	100%	8	62%
Nottinghamshire Total	993	60%	242	64%	1,235	61%
East Midlands Total	3,781	64%	952	66%	4,733	65%

Source: ILR - WBL New Measures of Success Rates Drill Downs 2007/08

79 Nottinghamshire's overall success rate in 2007/08 was below the regional average (61% compared to 65%).

Apprenticeships Funding

80 Only 2008/09 funding information is available at this time. More detail, including 2009/10 funding allocations figures will be available in the next phase of the reports.

Table 42:2008/09 16-18 Apprenticeship funding, Nottinghamshire LSC

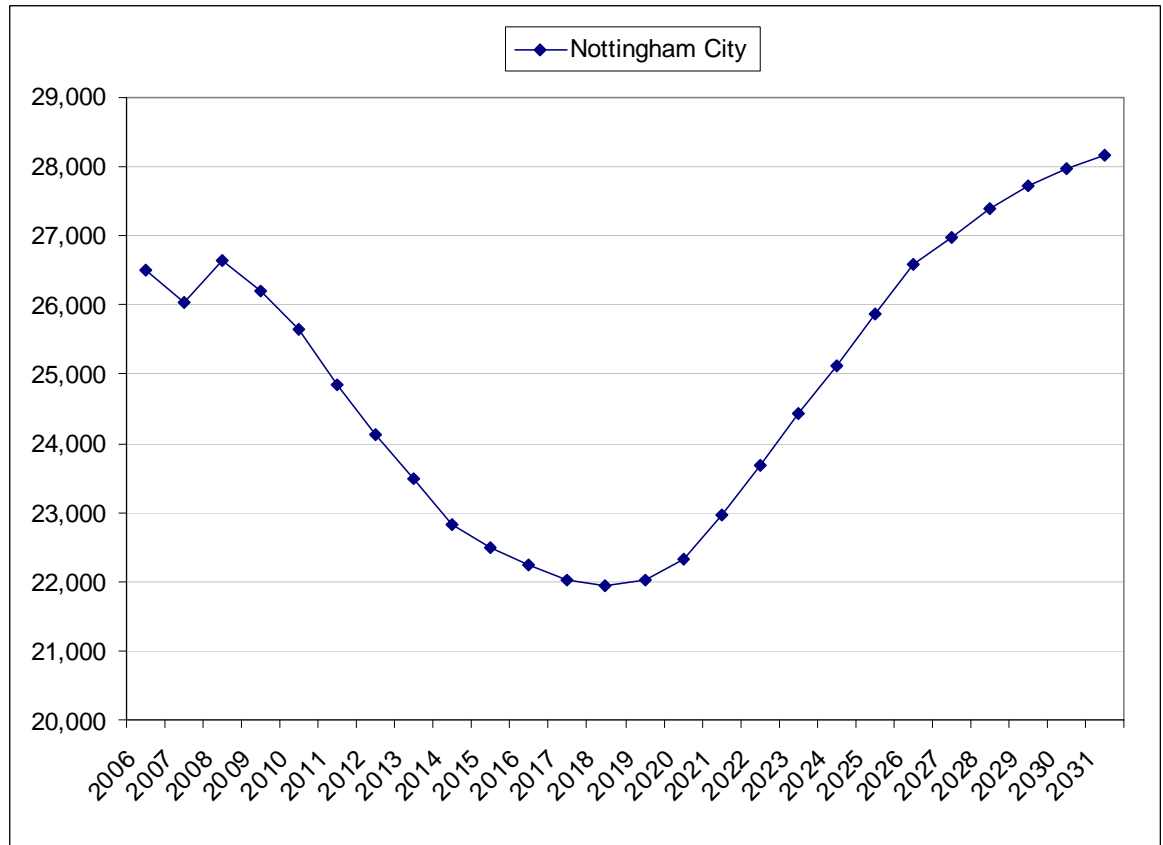
Funding LSC	Provider	Total Allocation 2008/09 (Excl ALS)
Nottinghamshire	Access Training (East Midlands) Ltd	£352,977.99
	Anything Random Limited	£554,011.93
	Castle College Nottingham	£227,310.00
	Charnwood Training Consultants Limited	£230,389.61
	Empower Training Services Limited	£1,250,288.32
	Enterprise & Innovation Zone Limited	£3,658.51
	Honda Motor Europe Limited	£654,998.18
	Intec Business Colleges Plc	£128,229.40
	Intraining (CBE) Ltd	£122,086.76
	JHP Group Limited	£585,143.70
	Kaplan Financial Limited	£138,178.04
	Lincoln College	£230,438.21
	Mark Bremner	£51,265.64
	Millbrook Management Services Limited	£209,943.73
	New College, Nottingham	£1,114,883.48
	Newcastle College Construction Limited	£294,792.28
	NHTA Limited	£276,215.38
	North Nottinghamshire College	£1,039,630.71
	North Warwickshire And Hinckley College	£11,321.31
	Nottingham City Council	£31,632.57
	Nottinghamshire County Council	£130,319.43
	Orient Gold Limited	£5,277.89
	Positive Outcomes Ltd	£347,293.17
	Protocol Skills Limited	£231,219.99
	QDOS Training Limited	£34,979.86
	Red Apple Community Trust Limited	£15,795.67
	Sheffield Trainers Limited	£523,680.92
	South Nottingham College	£99,150.14
	Stephenson College	£714,307.65
	Strategic Training Solutions (Mansfield) Limited	£344,514.03
	The Bassetlaw Training Agency Limited	£59,579.83
The Hair And Beauty Company (Uk) Limited	£280,674.62	
Toyota(G.B.) Plc	£1,552,500.95	
Triangle Training Ltd	£483,475.05	
TWL Training Ltd	£15,801.66	
VT Training Plc	£171,431.37	
West Nottinghamshire College	£1,383,080.21	
Nottinghamshire LSC Total		£13,900,478.19

Source: LSC - Apprenticeships 16-18 Original Profile for 2008/09.xls

Part 4 - Area Context

14-19 Population information

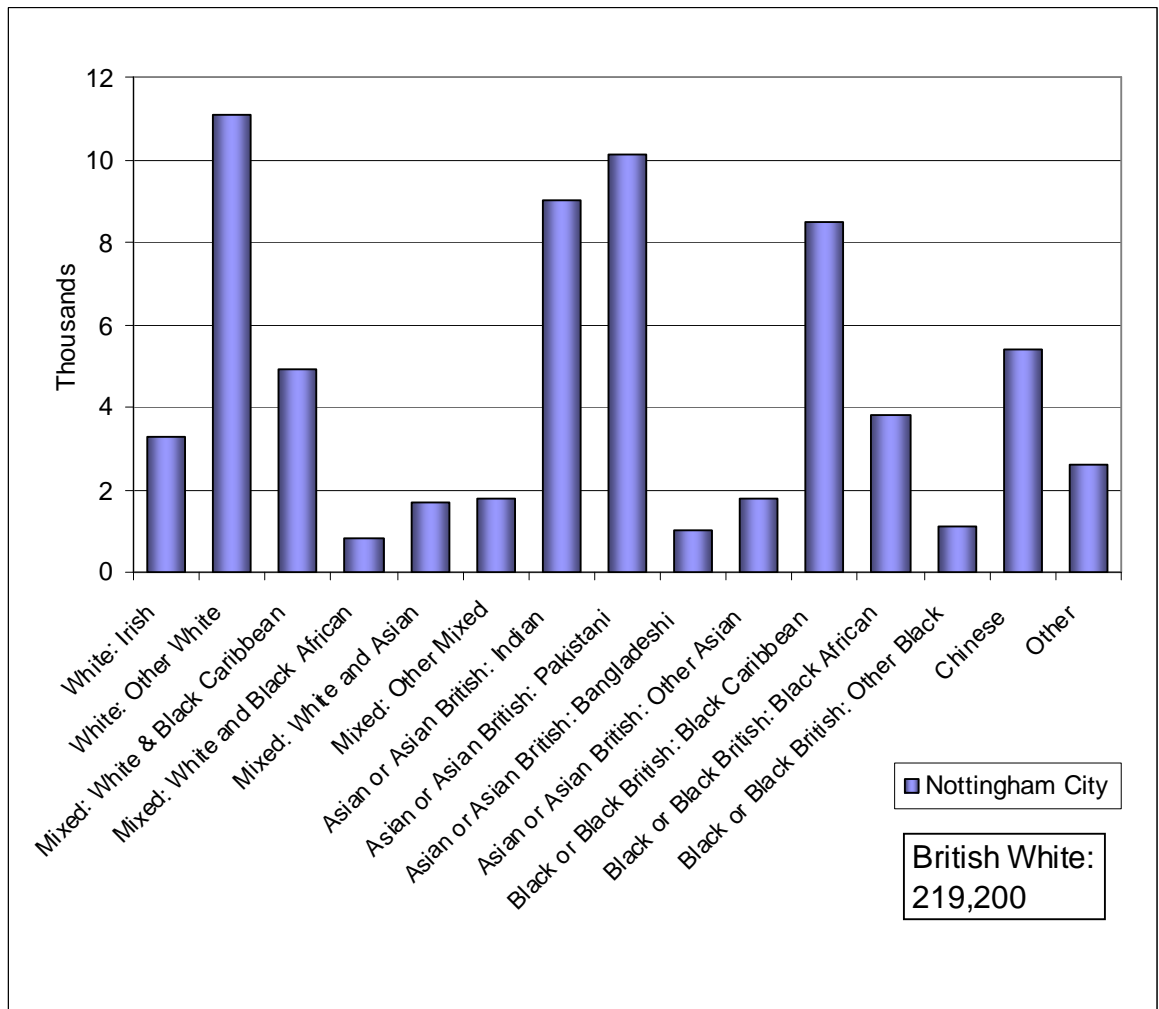
Figure 7: 14-19 population projections for Nottingham City, 2006-2030



Source: ONS 2006-based population projections

- 81 Figure 7 shows that from peak levels of 14-19 population in 2008, Nottingham City will see a steady decline until 2018. The 2018 level will be around 17.5% lower. After 2018 the population will start to increase, returning to 2008 levels by 2026 and continuing to rise through till 2031 where they are forecast to be 5.5% above the 2008 level.

Figure 8: Estimate of resident population by ethnic group (all ages), 2006

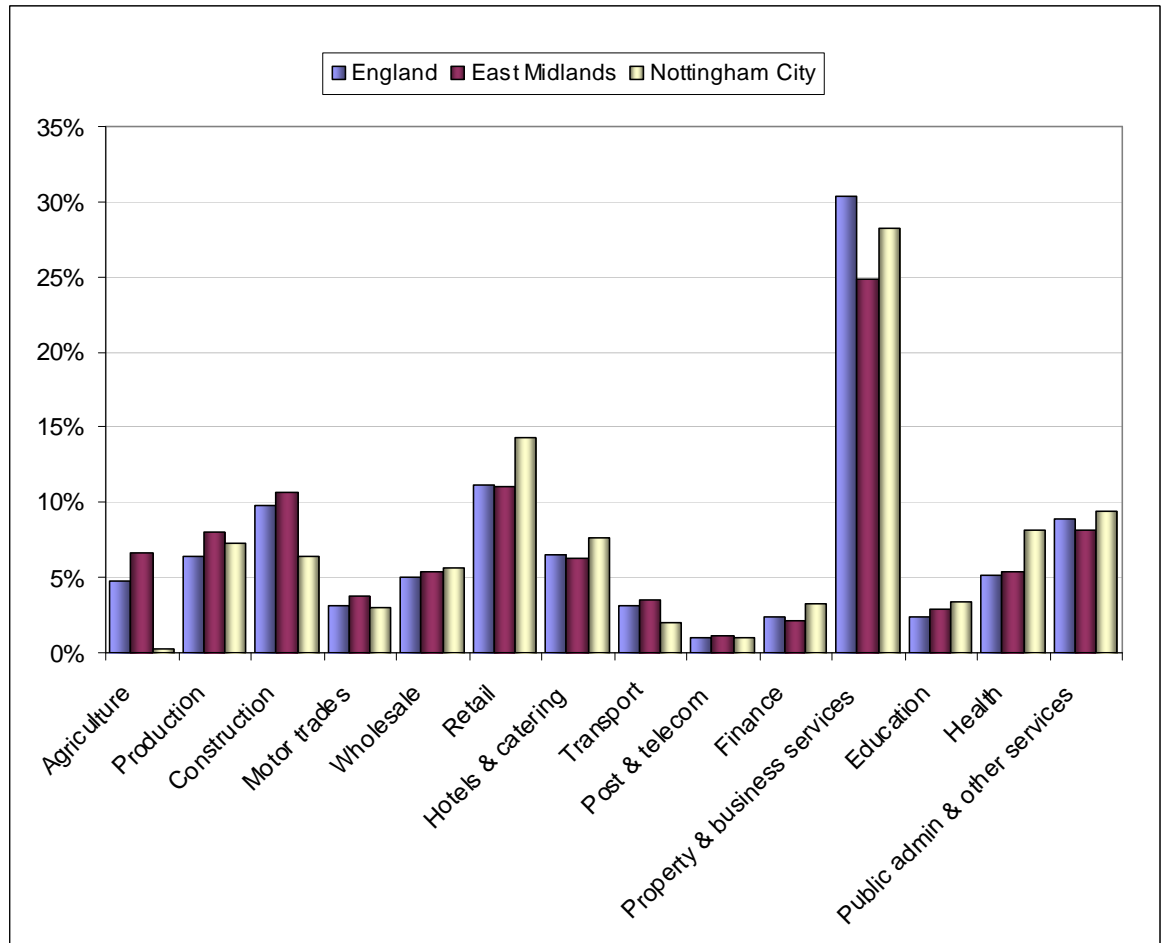


Source: OSN Estimates of resident population by ethnic group (experimental statistics). NB: the chart above does not show the White British population figures

82 Figure 8 shows that the three largest non-white communities in Nottingham City are Pakistani (3.5), Indian (3.1%) and Black Caribbean (1.7%). Overall 18.4% of the population are non-White. The White British population is the largest group in the City.

Employers and Employment in Nottingham City

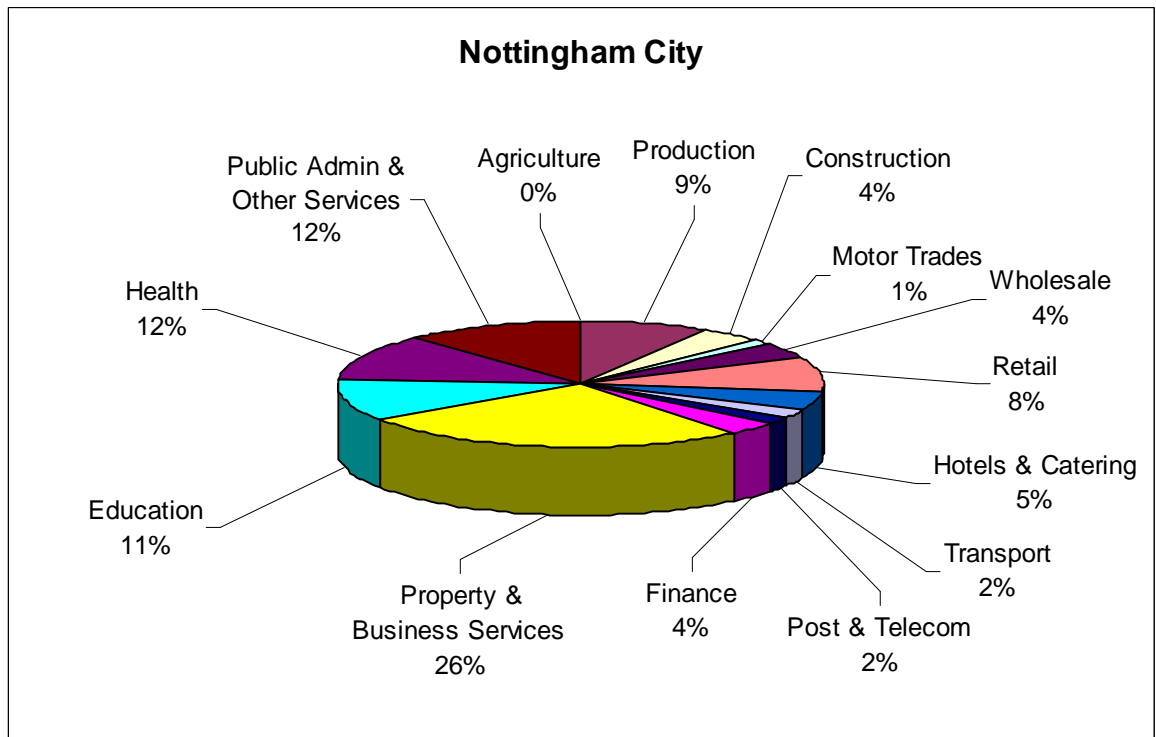
Figure 9: Distribution of business by broad industrial group



Source: Inter Departmental Business Register (IDBR) 2008

- 83 Figure 9 shows that the largest sectors are 'Property & Business Services' (28.3%), 'Retail' (14.3%), and 'Public Admin & Other Services' (9.4%). 'Property & Business Services' and 'Retail' are larger than the regional position and 'Construction' is at about 2/3rds the Regional level.

Figure 10: Employees in Nottingham City by sector, 2007



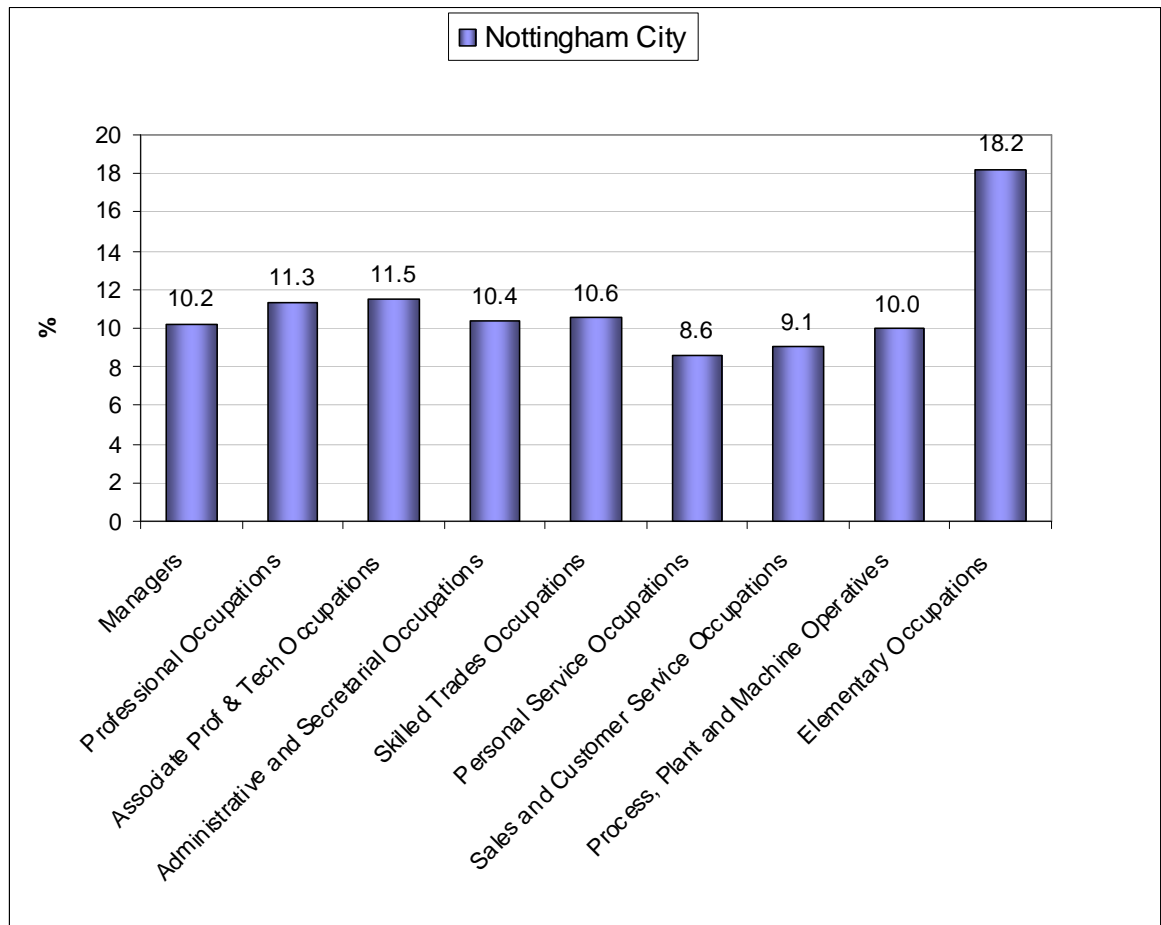
Source: Annual Business Inquiry (ABI)²² (2007)

84 Figure 10 shows the sectors employing the largest numbers of people are 'Property & Business Services' (26%, 48700 persons), 'Public Admin & Other Services' (12%, 21900 persons), 'Health' (12%, 21600 persons) and 'Education' (11%, 20000 persons).

²² The Annual Business Inquiry (ABI) shows the distribution of employees by industry. The ABI is a survey of a sample of businesses within the IDBR. Therefore there are sampling errors as with any survey and results should be viewed as a guide not an absolute. All numbers rounded to nearest 100.

Skills

Figure 11: Employment by occupation group, 2007/08



Source: Annual Population Survey (APS), July 2007-June 2008

85 Figure 11 shows that 'Managers', 'Professional Occupations' and 'Associate Professional and Technical' are grouped together as 'Higher Occupations'. 'Administrative and Secretarial', 'Skilled Trades Occupations', 'Personal Service Occupations' and 'Sales and Customer Service Occupations' are grouped together as 'Intermediate Occupations'. 'Process, Plant and Machine Operators' and 'Elementary Occupations' are grouped together as 'Lower Occupations'. Recent and ongoing change is moving away from 'Lower' occupations towards 'Intermediate' and 'Higher' occupations.

'Elementary Occupations' are the largest single group at 18.2%. 'Intermediate' occupations are the largest combined group and the movement from 'Lower' to 'Higher' occupations is slower in Nottingham City than most other areas of the East Midlands.

Table 43: Proportion of 19-59/64 population with qualifications by level, 2007

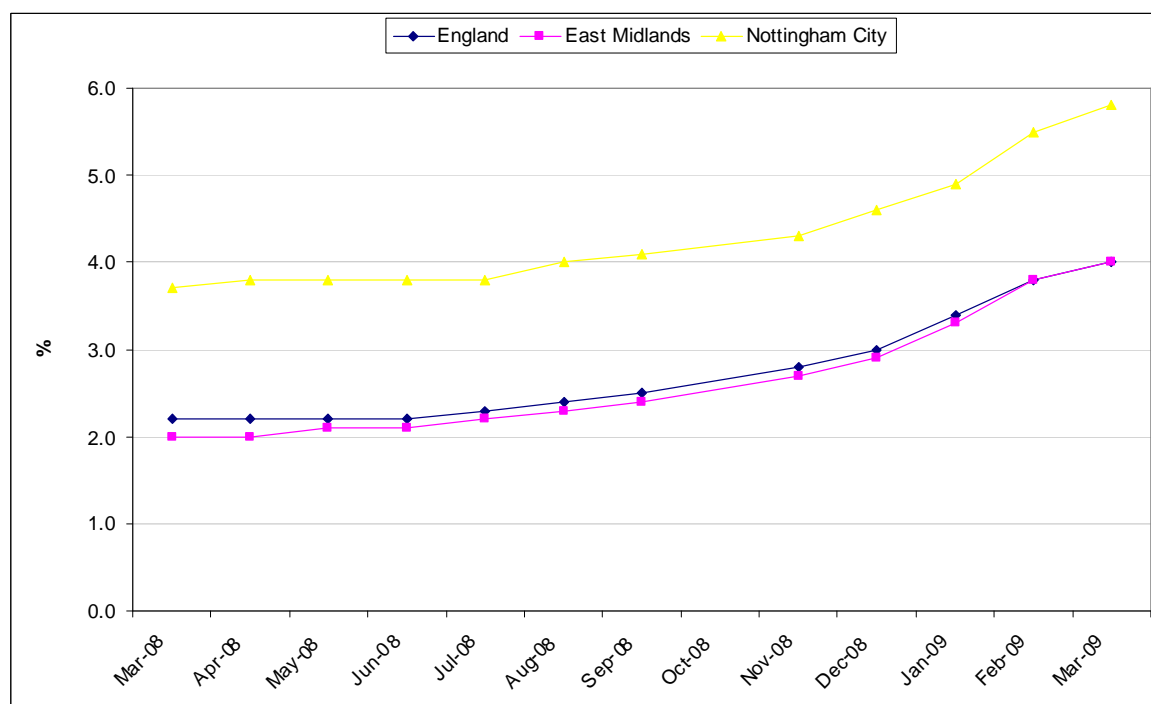
	Qualified to at least Level 4	Qualified to at least Level 3	Qualified to at least Level 2	Qualified lower than Level 2	Number (000s) with a qualification below Level 2	% with no qualifications	Number (000s) with no qualifications
Nottinghamshire	29.3%	49.7%	68.3%	19.5%	85	12.2%	53
Nottingham City	23.1%	45.2%	63.0%	19.9%	37	17.1%	32
East Midlands	27.3%	47.0%	67.2%	19.7%	499	13.1%	331

Source: Annual Population Survey 2007, <http://www.dcsf.gov.uk/rsgateway/DB/STA/t000809/Table1.xls>

86 Overall Nottingham City does not compare well with the region in terms of the qualification levels of its working-age residents. Nottingham City also had a higher working-age population with no qualifications than the region as a whole. (17.1% against 13.1%).

Unemployment

Figure 12: Job Seekers Allowance Claimants Rates



Source - Jobcentre Plus via Office of National Statistics (ONS)

87 Figure 12 shows that Nottingham City has consistently shown Claimant Rates above National and Regional levels over the last year. The position in March 09 is 5.0% (representing 11,500 persons²³), which is 1.8 percentage points higher. Nottingham City currently has the second highest claimant rate in East Midlands with only Leicester City being higher.

²³ Rounded to nearest 100

Part 5 –Sub-Regional Group (SRG) overview

Nottinghamshire and Nottingham City SRG

- 88 This section is intended to bring together issues from each local authority within the Sub-Regional Group to inform the planning discussions by presenting a more rounded picture.
- 89 Participation of 16 and 17 year olds in education and training is good in Nottingham City and was above regional averages in 2006. Nottinghamshire has also improved its participation numbers, and in 2006 was 1 percentage point below that of the region as a whole.
- 90 A key issue for all areas is the drop out at 17, which is currently following national trends.
- 91 Achievement at Level 2 by 16 has improved in recent years in both Nottingham City and Nottinghamshire. However, further improvement is needed to bring rates closer to regional levels and above.
- 92 Achievement at Level 2 and 3 by 19 has improved year on year from 2003/04 to 2007/08 in both the city and the county, though rates are very different for both. Nottinghamshire has a higher proportion of 19 year olds with Level 2 and Level 3 qualifications. However, Nottingham City had a better percentage point increase for achievements at Level 2 between 2003/04 and 2007/08 than Nottinghamshire.
- 93 Apprenticeship participation will be an issue in both areas. Participation will be affected by the recession as fewer employers come forward to offer places.
- 94 The vast majority of Nottingham City and Nottinghamshire 16-18 FE learners access provision within the SRG area, but mainly in Nottingham City's FE institutions. Nottinghamshire also had more learners than the city travelling outside of the local authority area to access provision from neighbouring LAs in the region or outside of the region.
- 95 In the main, Nottingham City and Nottinghamshire 16-18 school sixth form learners accessed learning provision within their respective local authority areas. Very few sixth form learners from Nottingham City accessed school sixth form provision outside of the SRG area though just under a third travelled to the county. In contrast, some Nottinghamshire's school sixth form learners did travel to other areas in the region.

Learning and Skills Council
East Midlands

17A Meridian East
Meridian Business Park
Leicester, LE19 1UU

Tel: 0845 019 4170
Fax: 0116 228 1801

<http://www.lsc.gov.uk/regions/EastMidlands>

© LSC June 2009

Published by the Learning and Skills Council

Extracts from this publication may be reproduced for non-commercial educational or training purposes on condition that the source is acknowledged and the findings are not misrepresented.

This publication is available in electronic form on the Learning and Skills Council website: www.lsc.gov.uk

If you require this publication in an alternative format or language, please contact the LSC Help Desk: 0870 900 6800

Publication reference: LSC-P-EM-500000