

16-19 Strategic Analysis:

Entry to Employment

East Midlands

September 2009

Of interest to Local Authorities and other
Partners and Stakeholders involved in
14-19 planning

16-19 Strategic Analysis: Entry to Employment

September 2009

Table of contents:

Introduction	3
Points and Issues for Consideration	5
Part 1 - 16-18 Resident Learner Activity	7
2006/07 and 2007/08 Participation	7
Starts, Occupancy and Average Length of Stay.....	7
2006/07 and 2007/08 Outcomes.....	8
2008/09 – Participation (Latest position at 1 st February 2009).....	10
Starts.....	10
Learners.....	11
LLDD.....	12
Ethnicity.....	13
2008/09 – Outcomes (Latest position at 1 st February 2009).....	13
Part 2 - Provision within East Midlands.....	16
2006/07 and 2007/08 Summary.....	16
2008/09 Participation (August 2008 – February 2009)	17
Starts.....	17
Learners.....	18
LLDD.....	19
Ethnicity.....	23
Average Length of Stay	27
2008/09 Outcomes	28
2008/09 Funding.....	30

Introduction

This 16-19 E2E update report is part of a series to be published for Local Authorities (LAs) over the period June – September 2009. The purpose of the reports is to provide, in the Machinery of Government Transition year, sufficient details of 16-19 provision and learners for Local Authorities to be able to:

- a Complement their existing strategic planning for 14-19 in the context of economic and employment information for their area
- b Develop detailed commissioning plans at LA and Strategic Regional Group levels
- c Focus on specific areas for improvement in their planning
- d Understand the provision accessed by their residents
- e Understand the scope and quality of the provision for those learners, wherever they are resident who choose to learn within providers situated within the LA's boundaries.

What the Series One report contains.

Series one reports, published June 2009, contained sufficient detail of provision accessed by residents to enable points (a), (c) and (d) above. In addition, by its focus on providers it also allows LAs to achieve points (b) and (e) above.

Series Two and Three reports

These reports will provide more detail of specific provision and groups of learners, such as those with Learning Difficulties and/or Disabilities (LDD) and those on Entry to Employment (E2E) programmes. In addition details of the curriculum offered in 16-18 institutions and the characteristics of learners studying those curricula will be provided. It is intended that the series two and three reports will aid LAs in particular in the execution of points (b) and (c) above by increasing their understanding of need and provision. Planned final volumes of learners and funding for 2009/10 for the relevant providers in each Local Authority will also be part of series three reports.

Data for the reports

Where relevant data is published nationally by the Department for Children, Schools and Families, such as that in statistical first reports, or by the Office for National Statistics, this data has been used. Much of the remaining data comes from submissions on the Individual Learner Record (ILR) made by providers to the LSC, from school census data, or from internal LSC systems designed to deal with allocations of funding to providers and measuring targets. Since data comes in at specific times of the year for FE and schools, only whole year data is provided for these types of institutions. This restricts these data sets to 2005/06 to 2007/08. For Apprenticeships, data arrives monthly, so in-year (2008/09) data is provided in these cases. Whilst E2E has transferred to the FE data return dates in 2008/09 latest in year information has been included. This represents approximately 6 months activity.

In January, 2007, the LSC consulted with the sector on a new funding approach in the document *Delivering World-class Skills in a Demand-led System*. Following this consultation the LSC's funding approach changed significantly for 2008/09. This has had an effect on how the data is collated and aggregated together in 2008/09. Therefore it is urged that when making comparisons across these two years this change is taken into consideration.

Accessing the reports and information

The reports will be made available via the LSC's external website. Where information is confidential a separate file will be provided for LAs on disc. From July 2009, an updated data website will be available for LAs.

Points and Issues for Consideration

- 1 Looking at the ratio of E2E Positive Outcomes to learners who started on the programme (starts) Nottingham City has figures of 33.1% and 37.0% for 2006/07 and 2007/08 respectively which are well below the East Midlands average (44.7% and 48.3%). When making a comparison with the other two cities (Derby and Leicester) we still find that Nottingham City is notably lower (Derby City 41.6% and 46.3%, Leicester City 45.5% and 54.4%)
- 2 Derbyshire providers as shown in Table 12 support 16.1% of LLDD within their E2E programmes. This is about one half of the East Midlands rate. Given that Derbyshire has a third (35.4%) of the region's E2E provision this raises the question of a possible shortfall in provision for LLDD.
- 3 Across the region more males than females are engaged on an Entry to Employment programme. In East Midlands the E2E gender split is 58.8% males to 41.2% female. Nottinghamshire and Leicester City has the highest male proportion at 67.9% and 66.0% respectively. Nottingham City and Northamptonshire have the lowest male proportion at 53.2% and 53.4% respectively. This reflects the fact that more females than males (by 9 percentage points in 2007/08) achieve 5 A*-C grades at GCSEs.
- 4 30.3% of learners have self-declared a disability or learning difficulty. The LA's with the highest proportion of Learners with Learning Difficulty or Disability (LLDD) on the E2E programme are Leicester City (60.9%), Lincolnshire (43.2%) and Nottingham City (37.7%). Those with the lowest proportion of LLDD are Derby City (12.7%) and Derbyshire (17.4%). The range of variance seen across the region is not consistent with the levels of difficulty and disability in the community. ¹
- 5 Review of the distribution of type of positive outcomes raises a number of points:
 - Progress to 'FE, New Deal or other learning at L2 or above' is highest in Derby City and Nottingham City (approaching 50% of all positive outcomes). Is there a difference of approach in these LA's, which leads towards learning at this Level 2 and above, and could this be good practice to be explored by others areas.
 - Progress to 'FE, New Deal or other learning **below** L2' is high (60% of positive outcomes) in Leicestershire. Whilst progression to learning is good, this high proportion to levels below L2 is non-typical.
 - Progress to 'Employment **without** Training at L2 or above' is highest in Lincolnshire (35% of all positive outcomes). Is this due to the nature of the program or the type of employment available in Lincolnshire?
 - Progress to 'Progress to Employment **with** Training at L2 or above' is high in Northamptonshire (20% of all positive outcome). Is there an approach in Northamptonshire that could be of value to other areas?

¹ Percentages in this paragraph exclude Not Known/ Not Provided

- Progress to 'Progress to Apprenticeships, Advanced Apprenticeships or Programme Led Apprenticeships' is high in Leicester City (36% of all positive outcomes). Is there an approach in Leicester City that could be of value to other areas?

Analysis of the ethnic mix of learners undertaking E2E at each provider within the five LSC areas is mixed, with Northamptonshire displaying the most even coverage. Whilst some providers are supporting non white groups at or above the level of these groups in the wider population, some are not. Given that providers often have specific catchment areas, this could lead to a shortfall of E2E for non white groups in some areas. A review of the data for each area (

- 6 Table 17 through Table 21) will provide useful input into the planning process.
- 7 The large number of 'Reason Not Known' especially as recorded for Derbyshire LA learners is a concern as it makes analysis of E2E positive outcomes less reliable.
- 8 Given that Derbyshire LSC contract 35.4% of the total East Midlands E2E provision, and that this provision only supports 16.3% of LLDD, raises a question of a possible shortfall in provision for LLDD.

Part 1 - 16-18 Resident Learner Activity

- 9 This section shows where the young people living within East Midlands local authorities are participating on E2E learning and highlights any issues relating to demand by residents for learning within the area.

2006/07 and 2007/08 Participation

- 10 This section provides summary information about learners who have undertaken Entry to Employment (E2E) programmes in 2006/07 and 2007/08.

Starts, Occupancy and Average Length of Stay

Table 1: E2E trends in Starts, Occupancy*, and Average Length of Stay 2006/07 – 2007/08: learners living in local authority areas

2005/06 -2007/08 Summary	2006/07	2007/08	2006/07	2007/08	2006/07	2007/08	2006/07	2007/08
	Starts		Participation (Occupancy)		Total Leavers		Average Stay (weeks)	
Derby City	550	473	196	182	524	431	15.5	16.2
Derbyshire	811	886	286	336	732	804	14.8	16.0
Leicester City	356	401	142	161	337	376	16.3	16.8
Leicestershire	312	380	119	148	318	342	15.1	15.9
Lincolnshire	621	613	272	297	573	553	20.9	19.1
Northamptonshire	711	676	274	287	652	694	17.2	17.9
Nottingham City	314	335	143	178	285	288	21.9	23.5
Nottinghamshire	662	609	323	438	636	552	21.2	24.4
Rutland	7	3	5	7	11	1	22.2	19.3
EAST MIDLANDS	4344	4376	1760	2033	4068	4041	17.8	18.5

Source: ILR - WBL and E2E drill downs 2006/07 – 2007/08. *Occupancy shows the average number of learners on an E2E programme in one month during a 12 month period.

- 11 The region has seen a 0.7% rise in the number of young people starting an Entry to Employment program between 2006/07 and 2007/08. The largest growth was seen in Leicestershire (21.8%) however this was from a low base in 2006/07. Positive growth was also seen in Leicester City (12.6%), Derbyshire (9.2%) and Nottingham City (6.7%). The largest reduction of starts was seen in Rutland (-57.1%), however this must be viewed in the context of very low numbers and also in the context of very low Not in Employment, Education or Training (NEET) numbers in Rutland. Other reductions were seen in Derby City (-14.0%), Nottinghamshire (-8.0%) and Northamptonshire (-4.9%).
- 12 In the area of participation (measured by occupancy as this gives a measure of ongoing participation not just those starting a programme) there has been an increase of 15.5% in East Midlands between 2006/07 and 2007/08. The largest growth was seen in Nottinghamshire (35.8%), Nottingham City

(24.6%), Leicestershire (24.0%) and Rutland (23.4%). The only area with a reduction in occupancy was (Derby City (-7.3%).

- 13 East Midlands has seen little movement in the number of leavers between 2006/07 and 2007/08 (-0.7%). The largest increases were seen in Leicester City (11.6%) and Derbyshire (9.8%). The largest falls were seen in Rutland (-90.9%, however based on very small numbers), Derby City (-17.7%) and Nottinghamshire (-12.2%).
- 14 Between 2006/07 and 2007/08 there was an increase of 4.2% in the average length of stay on the programme, within the East Midlands. The overall increase in length of stay suggests that the more difficult to reach learners are enrolling on the programme and requiring more support to stay in learning. In 2007/08 the range of length of stay varied between Leicestershire (15.9 weeks) and Nottinghamshire (24.4 weeks). Nottinghamshire and Nottingham City (23.5 weeks) are significantly higher than other areas but this can be explained as their programme includes learning at Level 1 for E2E learners.

2006/07 and 2007/08 Outcomes

Table 2: E2E trends in Positive Outcomes: Overall Positive Outcomes, FE and Apprenticeships (App) 2006/07 – 2007/08: learners living in local authority areas

2006/07 - 2007/08 Summary	Positive outcomes									
	2006/07					2007/08				
	OVERALL	emp with training	emp without training	FE	APP.	OVERALL	emp with training	emp without training	FE	APP.
Derby City	229	21	69	101	38	219	20	50	122	27
Derbyshire	358	39	113	139	67	395	40	108	181	66
Leicester City	162	14	54	49	45	218	16	51	84	67
Leicestershire	162	44	52	44	22	196	27	61	79	29
Lincolnshire	309	77	115	82	35	311	35	120	129	27
Northamptonshire	304	30	137	99	38	350	91	84	126	49
Nottingham City	104	15	29	51	9	124	23	26	58	17
Nottinghamshire	305	32	110	101	62	301	32	76	131	62
Rutland	9	0	7	2	0	1	1	0	0	0
East Midlands	1942	272	686	668	316	2115	285	576	910	344

Source: ILR - WBL and E2E drill downs 2006/07 – 2007/08

- 15 A positive outcome from an E2E programme in LSC terms is a learner who progresses to either FE, an Apprenticeship or other employment with training. Employment without training can be considered a positive outcome for the learner; however employment with training is preferred as it gives a progression path.
- 16 Between 2006/07 and 2007/08 East Midlands has seen a shift away from 'Employment without Training' to 'FE'.

Reviewing

- 17 Table 2 and Figure 1 a more detailed analysis of individual outcomes by LA can be made.

Derby City and Nottingham City have the highest percentage of their positive outcomes into FE (55.7% and 46.8% in 2007/08). All areas except Nottingham City showed strong growth in the number of positive outcomes into FE between 2006/07 and 2007/08. However Nottingham City maintained its already high level.

The growth in outcomes into Apprenticeships was more modest, only 28 more learners. Leicester City (22 learners) and Northamptonshire (11 learners) showed the largest increases, and Derby City (-11 learners) and Lincolnshire (-8 learners) the largest falls. This is disappointing, since one of the most appropriate destinations for leavers from an Entry to Employment programme, as the title suggests, is into Employment with training – an Apprenticeship.

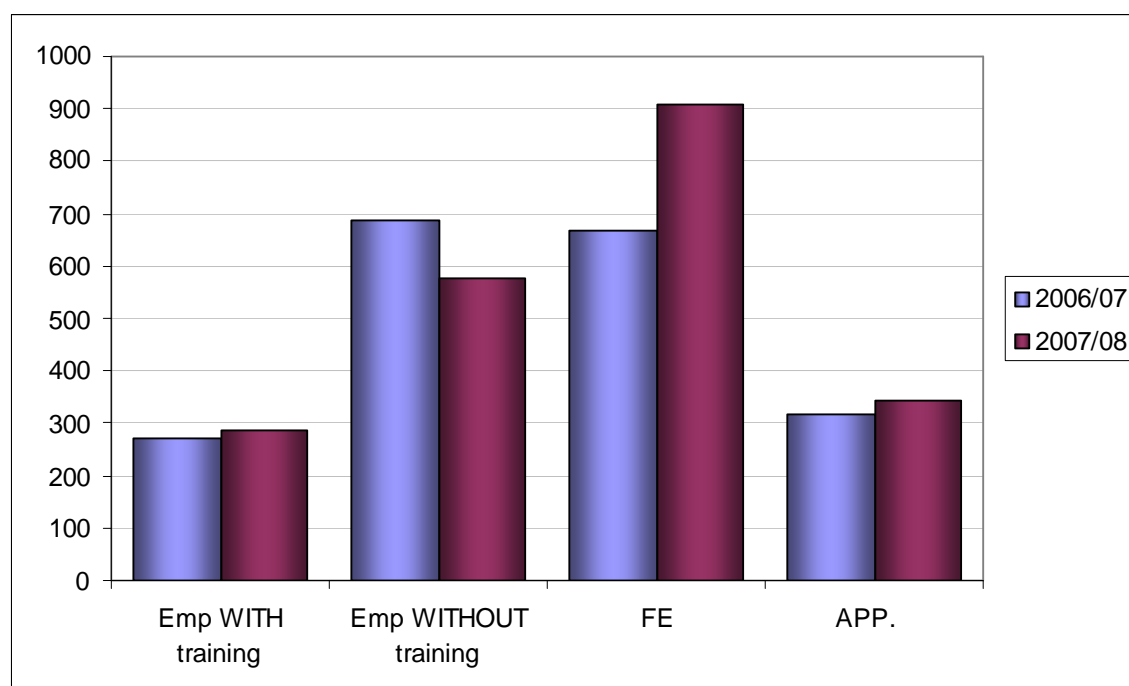
'Employment without Training' has fallen in East Midlands between 2006/07 and 2007/2008. The largest fall was seen in Northamptonshire which reduced from highest in region (137 learners) in 2006/07 to (84 learners) in 2007/08. Other good reductions were seen in Nottinghamshire (-34 learners), Derby City (-19 learners) over the same period. In 2007/08 the largest numbers of E2E learners who moved to an outcome of 'Employment without Training' are residents of Lincolnshire (120), Derbyshire (108), Northamptonshire (84) and Nottinghamshire (76).

- 18 Between 2006/07 and 2007/08 the region has seen an 8.9% increase in Overall Positive Outcomes. The strongest growth was seen in Leicester City (34.6%) followed by Leicestershire (21.0%) and Nottingham City (19.2%). Derby City (-4.4%) and Nottinghamshire (-1.3%) were the only areas showing a fall.

In 2007/08, Derbyshire contributed the largest number (18.7%) of Positive Outcomes to the regional total and maintained their top of table position from the previous year.

The smallest contribution (5.9%) came from Nottingham City. Looking at the ratio of Positive Outcomes to starts Nottingham City has figures of 33.1% and 37.0% for 2006/07 and 2007/08 respectively which are well below the East Midlands average (44.7% and 48.3% respectively). When making a comparison with the other two cities (Derby and Leicester) we still find that Nottingham City is notably lower (Derby City 41.6% and 46.3%, Leicester City 45.5% and 54.4%)

Figure 1: East Midlands – Numbers of Positive Outcomes 2006/07 – 2007/08



Source: ILR - WBL and E2E drill downs 2006/07 – 2007/08

2008/09 – Participation (Latest position at 1st February 2009)

- 19 The data below presents the latest position on E2E learners living in local authority areas in the East Midlands region. Data is from the provider data return which has a census date of 1st February 2009. (This date was the most recent available). This part year data has not been compared to the full year data for 2006/07 and 2007/08.
- 20 As the number of E2E learners residing in Rutland is very small, analytic comment has not been made.

Starts

Table 3: E2E Starts by Learners Resident in the East Midlands (includes provision contracted outside of the region)

Local Authority Area	2008/09 16-18 E2E Starts as at 1 st February 2009	% of East Midlands
Derby City	225	9.7%
Derbyshire	590	25.6%
Leicester City	124	5.4%
Leicestershire	127	5.5%
Lincolnshire	370	16.0%
Northamptonshire	341	14.8%
Nottingham City	202	8.7%
Nottinghamshire	326	14.1%
Rutland	4	0.2%
East Midlands	2309	100.0%

Source: ILR - DASH 0809-0809 - E02 - Learner.xls

- 21 The largest proportion of East Midlands E2E starts reside in Derbyshire (25.6%) as show in Table 3 above. The smallest proportion of starts, reside in Leicester City (5.4%) and Leicestershire (5.5%). The Leicester and Leicestershire figures are concerning, given the increasing NEET figures in all Local Authorities in the region.

Learners

Table 4: E2E Learners Resident in the East Midlands (includes provision contracted outside of the region)

LA	Total - Learners	% of East Midlands
Derby City	407	10.6%
Derbyshire	903	23.6%
Leicester City	238	6.2%
Leicestershire	247	6.5%
Lincolnshire	618	16.2%
Northamptonshire	597	15.6%
Nottingham City	346	9.0%
Nottinghamshire	464	12.1%
Rutland	5	0.1%
East Midlands	3,825	100.0%

Source: ILR DASH0809-0809-LR-E2E-Learner.xls

- 22 Table 4 above demonstrates that the largest proportion of East Midlands E2E learners reside in Derbyshire (23.6%). The smallest proportion of learners reside in Leicester City (6.2%) and Leicestershire (6.5%).

Table 5: E2E for Learners Resident in the East Midlands by Gender (includes provision contracted outside of the region)

LA	Female	Male
Derby City	171	236
Derbyshire	379	524
Leicester City	81	157
Leicestershire	88	159
Lincolnshire	267	351
Northamptonshire	278	319
Nottingham City	162	184
Nottinghamshire	149	315
Rutland	2	3
East Midlands	1,577	2,248

Source: ILR DASH0809-0809-LR-E2E-Learner.xls

- 23 Across the region more males than females are engaged on an Entry to Employment program. In East Midlands the E2E gender split is 58.8% males to 41.2% female. Nottinghamshire and Leicester City has the highest male participation at 67.9% and 66.0% respectively. Nottingham City and Northamptonshire have the lowest male participation at 53.2% and 53.4% respectively.

This reflects the fact that more females than males (by 9 percentage points in 2007/08) achieve 5 A*-C grades at GCSEs.

LLDD

- 24 Learners are categorised as LLDD by data fields within the Individual Learner Record (ILR). There is some variation in completeness of completion and interpretation of these fields so care is needed in interpreting the results.

Table 6: E2E Learners Resident in the East Midlands by Self Declared Disability or Learning Difficulty (includes provision contracted outside of the region)

LA	Not Known / Not Provided	No Learning Difficulty or Disability	Learning Difficulty and/or Disability
Derby City	6	349	52
Derbyshire	52	700	151
Leicester City		90	148
Leicestershire	7	170	70
Lincolnshire	7	346	265
Northamptonshire	11	386	200
Nottingham City	10	207	129
Nottinghamshire	15	323	126
Rutland		1	4
East Midlands	105	2,592	1,128

Source: ILR DASH0809-0809-LR-E2E-Learner.xls

- 25 Table 6 shows that 30.3% of learners have self-declared a disability or learning difficulty. The LA's with the highest proportion of Learners with Learning Difficulty or Disability (LLDD) on the E2E program are Leicester City (62.2%), Lincolnshire (43.4%) and Nottingham City (38.4%). Those with the lowest proportion of LLDD are Derby City (13.0%) and Derbyshire (17.7%). The range of variance seen across the region is not consistent with the levels of difficulties and disabilities in the community.

Note: Percentages in this paragraph exclude Not Known/ Not Provided

Ethnicity

Table 7: E2E Learners Resident in the East Midlands by Ethnicity (includes provision contracted outside of the region)

LA	Asian	Black	Chinese	Mixed	Other	Unknown	White
Derby City	59	23	1	18		5	301
Derbyshire	4	1		10	2	26	860
Leicester City	29	9		22	1		177
Leicestershire		2	1	6	2	5	231
Lincolnshire		4		5		3	606
Northamptonshire	14	30	1	21	1	4	526
Nottingham City	15	28		23		7	273
Nottinghamshire	3	6		10		9	436
Rutland							5
East Midlands	124	103	3	115	6	59	3,415

Source: ILR DASH0809-0809-LR-E2E-Learner.xls

- 26 In Table 7 we see that 89.3% of E2E learners who reside in the East Midlands are white. Whilst not a direct comparison for the same 16-18 age group the 'Population Estimates by Ethnic Group –Mid 2007'² indicates that 90.9% of East Midlands residents in this age group are white. Lincolnshire (98.1%) has the highest percentage, against an all persons estimate of 96.6%. The three cities Derby (74.0%), Leicester (74.4%) and Nottingham (78.9%) have the lowest proportion of white E2E resident learners. The all persons estimate for the three cities is 84.8%, 61.3% and 80.9% respectively.

2008/09 – Outcomes (Latest position at 1st February 2009)

- 27 The recording of outcome categories in 2008/09 has changed and direct comparison to previous years will be difficult. Data includes leavers from E2E in August 2008 (Period 1) through February 2009 (Period 6).

² Source: Office of National Statistics

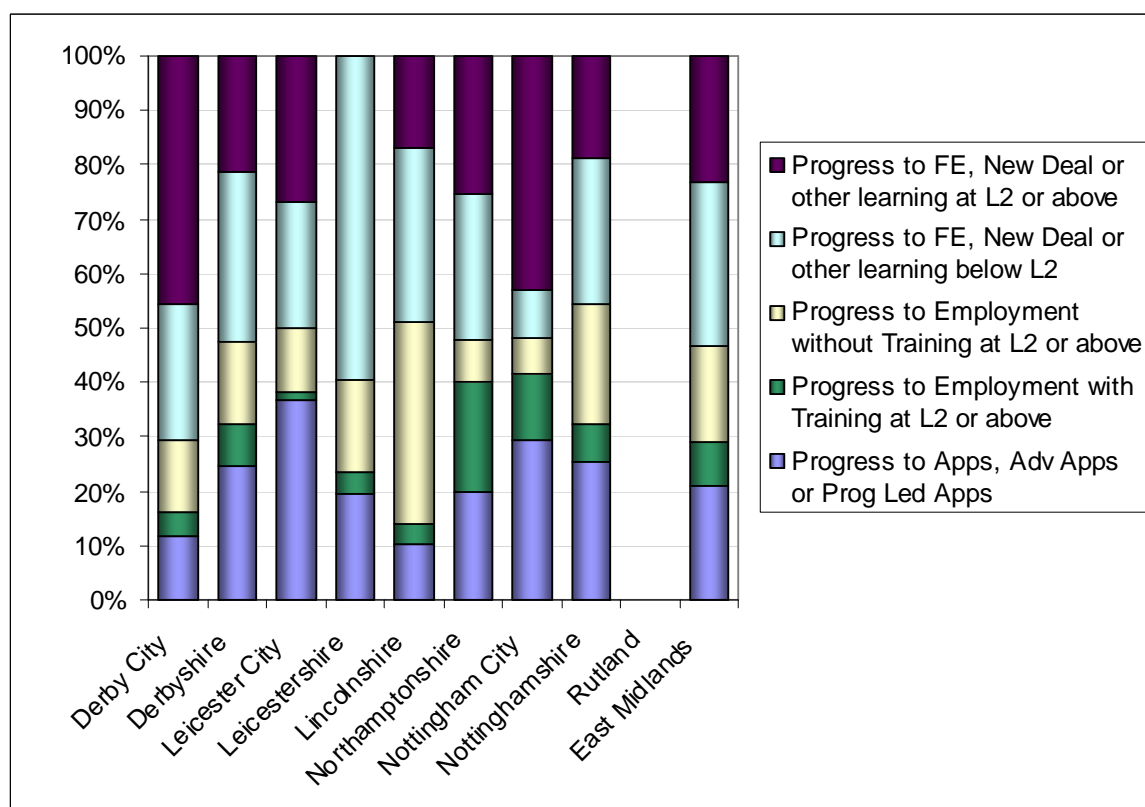
Table 8: E2E Outcomes by Residency

Learners LA	Progress to Apps, Adv Apps or Prog Led Apps	Progress to Employment with Training at L2 or above	Progress to Employment without Training at L2 or above	Progress to FE, New Deal or other learning below L2	Progress to FE, New Deal or other learning at L2 or above	Other	Reason Not Known	Grand Total
Derby City	8	3	9	17	31	90	76	234
Derbyshire	46	14	28	58	40	126	210	522
Leicester City	22	1	7	14	16	39	37	136
Leicestershire	15	3	13	46		55	45	177
Lincolnshire	14	5	50	43	23	131	53	319
Northamptonshire	23	23	9	31	29	110	61	286
Nottingham City	17	7	4	5	25	76	13	147
Nottinghamshire	15	4	13	16	11	89	26	174
Rutland						3		3
East Midlands	160	60	133	230	175	719	521	1,998

Source: Individual Learner Records - LR - 0809 - Learners.xls (L02 Return, March Freeze)

28 Using Table 8 the large number of 'Reason Not Known' especially as recorded for Derbyshire LA learners is a concern as it makes analysis of positive outcomes less reliable.

Figure 2: Distribution between types of Positive Outcome based on residency



Source: Individual Learner Records - LR - 0809 - Learners.xls (L02 Return, March Freeze)

Figure 2 raises a number of points:

- Progress to 'FE, New Deal or other learning at L2 or above' is highest in Derby City and Nottingham City (approaching 50% of all positive outcomes). Is there a difference of approach in these LA's, which leads towards learning at this Level 2 and above, and could this be good practice to be explored by others areas.
- Progress to 'FE, New Deal or other learning below L2' is high (60% of positive outcomes) in Leicestershire. Whilst progression to learning is good, this high proportion to levels below L2 is non typical.
- Progress to 'Employment without Training at L2 or above' is highest in Lincolnshire (35% of all positive outcomes). Is this due to the nature of the program or the type of employment available in Lincolnshire?
- Progress to 'Progress to Employment with Training at L2 or above' is high in Northamptonshire (20% of all positive outcome). Is there an approach in Northamptonshire that could be of value to other areas?
- Progress to 'Progress to Apps, Adv Apps or Prog Led Apps' is high in Leicester City (36% of all positive outcome). Is there an approach in Leicester City that could be of value to other areas?

Part 2 - Provision within East Midlands

29 This section shows E2E activity by provider. The providers have been shown against the LSC area with whom they currently contract as separation at local authority level is currently not possible.

2006/07 and 2007/08 Summary

Table 9: Summary data for 2006/07 and 2007/08

	Derbyshire		Leicestershire		Lincolnshire & Rutland		Northamptonshire		Nottinghamshire		East Midlands	
	2006/07	2007/08	2006/07	2007/08	2006/07	2007/08	2006/07	2007/08	2006/07	2007/08	2006/07	2007/08
Starts	1389	1505	684	811	619	620	731	684	990	931	4413	4551
Occupancy	484	558	267	320	271	315	282	293	479	620	1783	2106
LLDD	116	109	97	145	99	134	66	97	187	282	564	767
%LLDD	24.0	19.5	36.3	45.3	36.5	42.5	23.4	33.1	39.0	45.5	31.6	36.4
Non white	47	50	52	59	4	6	39	46	38	46	180	206
% Non white	9.7	9.0	19.5	18.4	1.5	1.9	13.8	15.7	7.9	7.4	10.1	9.8
Leavers	1283	1340	677	768	559	576	684	750	958	823	4161	4257
Positive Outcomes %	46.3	50.7	48.7	57.4	53.3	55.9	47.4	50.9	43.8	49.7	47.2	52.5
Average stay (weeks)	14.7	15.9	15.8	16.2	21.1	19.3	17.1	18	21.5	24.6	17.7	18.5

Source: Individual Learner Records - LR - 0809 - Learners.xls (L02 Return, March Freeze)

30 In Table 9 we see a 2006/07 and 2007/08 summary of E2E activity by providers contracted in the East Midlands.

In the area of starts East Midlands saw an increase of 3.1% between 2006/07 and 2007/08. The strongest growth was in Leicestershire (18%). Two areas, Northamptonshire and Nottinghamshire, saw a decline in starts of around -6.0%.

Occupancy figures saw a growth of 18.1% in East Midlands. The strongest growth was in Nottinghamshire (29.4%). Derbyshire, Leicestershire and 'Lincolnshire and Rutland' all had good growth (range of 15% to 20%). Northamptonshire growth was smaller at 3.9%.

Considering the proportion of LLDD supported on E2E the East Midlands saw a growth of 4.8 percentage points (203 additional learners). All areas

except Derbyshire (-4.5 percentage points), saw an increase in LLDD representation.

In the area of ethnicity East Midlands maintained its position with around 10% non white representation which is in line with the population average for the region.

The percentage of positive outcomes has increased in all areas between 2006/07 and 2007/08. The average increase for East Midlands is 5.3 percentage points.

- 31 For Average Stay, East Midlands saw an average increase of 0.8 weeks. The largest increase was Nottinghamshire with a change from 21.5 to 24.6. Nottinghamshire remains notably higher than the rest of the region, which reflects its inclusion of NVQ Level 1 qualification within its program.

2008/09 Participation (August 2008 – February 2009)

Starts

Table 10: Starts by Provider by Funding LSC

Provider	Derbyshire	Leicestershire	Lincolnshire and Rutland	Northamptonshire	Nottinghamshire	Grand Total
Academy of Hair & Beauty Ltd	10					10
Access Training (East Midlands) Ltd	12				58	70
Acorn Training Consultants Ltd	34					34
Aston Recruitment & Training Ltd				6		6
C G Partnership (Training Projects) Ltd			28			28
Castle College Nottingham					68	68
Chesterfield College	46					46
Dart Limited	5					5
Derby City Council	7					7
Derby Skillbuild	32					32
Derbyshire and Nottinghamshire Chamber of Commerce and Industry	141					141
Education & Youth Services Limited				93	52	145
Enterprise & Innovation Zone Limited					17	17
Hill Holt Wood			30			30
Intraining (ESD) Ltd	18					18
Isis Training & Recruitment Limited			74			74
JHP Group Limited					15	15
Juniper Training Limited	124					124
Kettering Borough Council				10		10
Key Training Limited				38		38
Leicester College		131				131
Lincoln College			21			21
Lincolnshire County Council			54			54
Millbrook Management Services Limited	4				5	9
Moulton College				15		15
Nacro	31		44			75
National Council On Ageing	45					45

NLT Training Services Limited	18					18
North Nottinghamshire College					70	70
Northampton College				72		72
Northamptonshire Industrial Training Association Ltd				8		8
Nottingham City Council					73	73
Rathbone Training	87	267		66	13	433
Skegness College of Vocational Training Limited			74			74
South East Derbyshire College	151					151
South Nottingham College					24	24
Starting Off (Kettering) Ltd.				15		15
Stephenson College		1			57	58
Strategic Training Solutions (Mansfield) Limited					35	35
Stubbing Court Training Limited	3					3
TBG Learning Ltd	76					76
The Bassetlaw Training Agency Limited					19	19
University of Derby	25					25
West Nottinghamshire College					14	14
YMCA Derbyshire	11					11
YMCA Training			25			25
Grand Total	880	399	350	323	520	2472

Source: Individual Learner Records - LR - 0809 - Learners.xls (L02 Return, March Freeze)

- 32 E2E starts as shown in Table 10 show that 35.6% of East Midlands starts are funded through Derbyshire LSC. Nottinghamshire LSC account for 21% and the remaining three LSC areas share the remaining 43.4%.

Learners

Table 11: Learners by Provider by Funding LSC

Provider	Derbyshire	Leicestershire	Lincolnshire And Rutland	Nottinghamshire	Northamptonshire	Grand Total
Academy of Hair & Beauty Ltd	15					15
Access Training (East Midlands) Ltd	27			111		138
Acorn Training Consultants Ltd	57					57
Aston Recruitment & Training Ltd					12	12
C G Partnership (Training Projects) Ltd			46			46
Castle College Nottingham				115		115
Chesterfield College	49					49
Dart Limited	11					11
Derby City Council	14					14
Derby Skillbuild	62					62
Derbyshire and Nottinghamshire Chamber of Commerce and Industry	248					248
Education & Youth Services Limited				93	165	258
Enterprise & Innovation Zone Limited				20		20
Hill Holt Wood			51			51
Intraining (ESD) Ltd	38					38
Isis Training & Recruitment Limited			117			117
JHP Group Limited				39		39

Juniper Training Limited	181					181
Kettering Borough Council					31	31
Key Training Limited					63	63
Leicester College		240				240
Lincoln College			21			21
Lincolnshire County Council			83			83
Millbrook Management Services Limited	11			14		25
Moulton College					25	25
Nacro	51		83			134
National Council On Ageing	76					76
NLT Training Services Limited	24					24
North Nottinghamshire College				71		71
Northampton College					107	107
Northamptonshire Industrial Training Association Ltd					19	19
Nottingham City Council				135		135
Rathbone Training	161	401		13	110	685
Skegness College of Vocational Training Limited			143			143
South East Derbyshire College	159					159
South Nottingham College				24		24
Starting Off (Kettering) Ltd.					21	21
Stephenson College		1		57		58
Strategic Training Solutions (Mansfield) Limited				66		66
Stubbing Court Training Limited	4					4
TBG Learning Ltd	150					150
The Bassetlaw Training Agency Limited				33		33
Tresham Institute					1	1
University of Derby	38					38
West Nottinghamshire College				14		14
YMCA Derbyshire	41					41
YMCA Training				38		38
Grand Total	1,417	642	582	805	554	4,000

Source: Individual Learner Records - LR - 0809 - Learners.xls (L02 Return, March Freeze)

- 33 E2E provision distribution is shown above in Table 11. The highest proportion of learners are funded through Derbyshire LSC (35.4%) and Nottinghamshire LSC (20.1%). The lowest proportions are funded via Northamptonshire (13.9%), Lincolnshire & Rutland (14.6%) and Leicestershire (16.0%).

LLDD

- 34 In East Midlands 31.7% of E2E provision is undertaken by Learners with Learning Difficulties or Disabilities (LLDD).
- 35 Note: Percentages in this section exclude 'Unknown'.

Table 12: LLDD Learners by Provider and Funded by Derbyshire LSC

Provider	Unknown	No Learning Difficulty or Disability	Learning Difficulty and/or Disability
Academy of Hair & Beauty Limited		13	~
Access Training (East Midlands) Ltd	~	10	13
Acorn Training Consultants Limited		43	14
Chesterfield College	~	35	11
Dart Limited		~	9
Derby City Council		12	~
Derby Skillbuild		54	8
Derbyshire and Nottinghamshire Chamber of Commerce and Industry	~	203	44
Intraining (Esd) Ltd		33	~
Juniper Training Limited	~	165	15
Millbrook Management Services Limited		~	8
Nacro		46	~
National Council on Ageing		66	10
NLT Training Services Limited		24	
Rathbone Training		120	41
South East Derbyshire College	49	108	~
Stubbing Court Training Limited			~
TBG Learning Ltd	~	132	16
University of Derby		29	9
YMCA Derbyshire		38	~
Derbyshire Total	60	1,136	221

Source: Individual Learner Records - LR - 0809 - Learners.xls (L02 Return, March Freeze)

Note: ~ indicates a number of 5 or less which has been suppressed

- 36 Derbyshire providers as shown in Table 12 support 16.3% of LLDD within their E2E program. This is about one half of the East Midlands rate. Derbyshire and Nottinghamshire Chamber of Commerce and Industry (44) and Rathbone (41) have the highest numbers of LLDD. Providers with larger numbers of learners but low numbers of LLDD include Juniper Training Ltd, South East Derbyshire College.

Given that Derbyshire LSC contract 35.4% of the total East Midlands E2E provision, and that this provision only supports 16.3% of LLDD, raises a question of a possible shortfall in provision for LLDD.

Table 13: LLDD Learners by Provider and Funded by Leicestershire LSC

Provider	Unknown	No Learning Difficulty or Disability	Learning Difficulty and/or Disability
Leicester College	7	178	55
Rathbone Training	7	142	252
Stephenson College			~
Leicestershire Total	14	320	308

Source: Individual Learner Records - LR - 0809 - Learners.xls (L02 Return, March Freeze)

Note: ~ indicates a number of 5 or less which has been suppressed

- 37 Leicestershire providers as shown in **Table 13** support 49.0% of LLDD within their E2E program. This is 17.3 percentage points above the East Midlands rate. LLDD are well represented within Leicestershire provision.

Table 14: LLDD Learners by Provider and Funded by Lincolnshire & Rutland LSC

Provider	Unknown	No Learning Difficulty or Disability	Learning Difficulty and/or Disability
C G Partnership (Training Projects) Limited		29	17
Hill Holt Wood	7	40	~
Isis Training & Recruitment Limited		111	6
Lincoln College		13	8
Lincolnshire County Council		38	45
Nacro		50	33
Skegness College of Vocational Training Ltd			143
YMCA Training		37	~
Lincolnshire And Rutland Total	7	318	257

Source: Individual Learner Records - LR - 0809 - Learners.xls (L02 Return, March Freeze)

Note: ~ indicates a number of 5 or less which has been suppressed

- 38 Lincolnshire & Rutland providers as shown in Table 14 support 44.7% of LLDD within their E2E program. This is 13.0 percentage points above the East Midlands rate. All 143 places at Skegness College of Vocational Training Limited are taken by LLDD as are 54.2% of places at Lincolnshire County Council. LLDD is less well represented at Isis Training & Recruitment Limited (5.1%) and Hill Holt Wood (9.1%).

Table 15: LLDD Learners by Provider and Funded by Nottinghamshire LSC

Provider	Unknown	No Learning Difficulty or Disability	Learning Difficulty and/or Disability
Access Training (East Midlands) Ltd	~	58	51
Castle College Nottingham	~	88	23
Education & Youth Services Limited	~	47	45
Enterprise & Innovation Zone Limited		19	~
JHP Group Limited		20	19
Millbrook Management Services Limited		~	12
North Nottinghamshire College	6	60	~
Nottingham City Council	~	95	39
Rathbone Training		7	6
South Nottingham College	~	16	7
Stephenson College	~	26	27
Strategic Training Solutions (Mansfield) Ltd		52	14
The Bassetlaw Training Agency Limited		24	9
West Nottinghamshire College		10	~
Nottinghamshire Total	19	524	262

Source: Individual Learner Records - LR - 0809 - Learners.xls (L02 Return, March Freeze)

Note: ~ indicates a number of 5 or less which has been suppressed

- 39 Nottinghamshire providers as shown in Table 15 support 33.3% of LLDD within their E2E program. This is 1.6 percentage points above the East Midlands rate. Access Training (East Midlands) Ltd (51), Education & Youth Services Limited (45) and Nottingham City Council (39) have the highest numbers of LLDD. Providers with larger numbers of learners but low numbers of LLDD include North Nottinghamshire College.

Table 16: LLDD Learners by Provider and Funded by Northamptonshire LSC

Provider	Unknown	No Learning Difficulty or Disability	Learning Difficulty and/or Disability
Aston Recruitment & Training Limited		10	~
Education & Youth Services Limited	7	63	95
Kettering Borough Council		18	13
Key Training Limited	~	51	11
Moulton College		18	7
Northampton College	~	94	12
Northamptonshire Industrial Training Association Ltd		17	~
Rathbone Training	~	71	38
Starting Off (Kettering) Ltd.		14	7
Tresham Institute		~	
Northamptonshire Total	10	357	187

Source: Individual Learner Records - LR - 0809 - Learners.xls (L02 Return, March Freeze)

Note: ~ indicates a number of 5 or less which has been suppressed

Northamptonshire providers as shown in

- 40 Table 16 support 34.4% of LLDD within their E2E program. This is 2.7 percentage points above the East Midlands rate. Education & Youth Services Limited (95) and Rathbone (38) have the highest numbers of LLDD.

Ethnicity

- 41 In East Midlands 10.9% of E2E provision is for Learners who are Non White as shown on their Individual Learner Record. Whilst not a direct comparison for the same 16-18 age group the 'Population Estimates by Ethnic Group – Mid 2007'³ indicates that 9.1% of all persons in East Midlands are Non White. This suggests the coverage within E2E is in line with the population.

Table 17: Learners by Provider by Ethnicity and Funded by Derbyshire LSC

Provider Name	Unknown	Non-White	White	% Non White
Academy Of Hair & Beauty Limited		~	13	13.3%
Access Training (East Midlands) Ltd	~		23	0.0%
Acorn Training Consultants Limited		~	54	5.3%
Chesterfield College	~	~	47	2.1%
Dart Limited			11	0.0%
Derby City Council		~	12	14.3%
Derby Skillbuild		11	51	17.7%
Derbyshire and Nottinghamshire Chamber of Commerce and Industry		9	239	3.6%
Intraining (Esd) Ltd	~	6	31	16.2%
Juniper Training Limited		10	171	5.5%
Millbrook Management Services Ltd			11	0.0%
Nacro		11	40	21.6%
National Council On Ageing	~	11	61	15.3%
NLT Training Services Limited			24	0.0%
Rathbone Training		38	123	23.6%
South East Derbyshire College		~	155	2.5%
Stubbing Court Training Limited			~	0.0%
TBG Learning Ltd	19	44	87	33.6%
University of Derby	~		36	0.0%
YMCA Derbyshire			41	0.0%
Derbyshire Total	31	152	1,234	11.0%

Source: Individual Learner Records - LR - 0809 - Learners.xls (L02 Return, March Freeze)

Note: ~ indicates a number of 5 or less which has been suppressed

Derbyshire providers as shown in

- 42 Table 17 support 11.0% of non-white learners within their E2E program. This compares well to the 'Population Estimates by Ethnic Group –Mid 2007'⁴ which indicates that 6.2% of all persons in Derbyshire LSC area are Non-

³ Source: Office of National Statistics

⁴ Source: Office of National Statistics

White. Whilst above the average levels of non-white communities, coverage is focused with a limited number of providers. TBG Learning Ltd and Rathbone have the highest proportion of non-white learners. Chesterfield College, South East Derbyshire College and Derbyshire and Nottinghamshire Chamber of Commerce and Industry all have large E2E programs, but are supporting low numbers of non-white groups.

Table 18: Learners by Provider by Ethnicity and Funded by Leicestershire LSC

Provider Name	Unknown	Non-White	White	% Non White
Leicester College	~	18	217	7.7%
Rathbone Training		92	309	22.9%
Stephenson College			~	0.0%
Leicestershire Total	~	110	527	17.3%

Source: Individual Learner Records - LR - 0809 - Learners.xls (L02 Return, March Freeze)

Note: ~ indicates a number of 5 or less which has been suppressed

Leicestershire providers as shown in

- 43 Table 18 support 17.3% of non-white learners within their E2E program. This compares well to the 'Population Estimates by Ethnic Group –Mid 2007'⁵ which indicates that 17.8% of all persons in Leicestershire LSC area are Non-White.
- 44 Rathbone has the highest proportion of non-white learners. Leicester College has a large E2E program but is supporting low numbers of non-white groups compared to the communities found in the city. This is predominantly due to the fact that Rathbone specialises in provision for LLDD learners so they are more suitably placed with this provider than with Leicester College.

Table 19: Learners by Provider by Ethnicity and Funded by Lincolnshire and Rutland LSC

Provider Name	Unknown	Non-White	White	% Non White
C G Partnership (Training Projects) Ltd	~		45	0.0%
Hill Holt Wood	~		50	0.0%
Isis Training & Recruitment Ltd			117	0.0%
Lincoln College			21	0.0%
Lincolnshire County Council		~	79	4.8%
Nacro		~	82	1.2%
Skegness College of Vocational Training Ltd	~	~	140	1.4%
YMCA Training		~	37	2.6%
Lincolnshire and Rutland Total	~	8	571	1.4%

⁵ Source: Office of National Statistics

Source: Individual Learner Records - LR - 0809 - Learners.xls (L02 Return, March Freeze)
 Note: ~ indicates a number of 5 or less which has been suppressed

45 Lincolnshire and Rutland providers as shown in Table 19 support 1.4% of non-white learners within their E2E program. This is under half when compared to the 'Population Estimates by Ethnic Group –Mid 2007'⁶ which indicates that 3.5% of all persons in Lincolnshire & Rutland LSC area are Non White. Lincolnshire County Council has the highest proportion of non-white learners (4.8%). All other providers are only supporting low numbers of non-white groups.

Table 20: Learners by Provider by Ethnicity and Funded by Northamptonshire LSC

Provider Name	Unknown	Non-White	White	% Non White
Aston Recruitment & Training Ltd			12	0.0%
Education & Youth Services Ltd	~	25	138	15.3%
Kettering Borough Council		~	28	9.7%
Key Training Limited		9	54	14.3%
Moulton College		~	23	8.0%
Northampton College		13	94	12.1%
Northamptonshire Industrial Training Association Ltd		~	18	5.3%
Rathbone Training	~	14	95	12.8%
Starting Off (Kettering) Ltd.		~	16	23.8%
Tresham Institute			~	0.0%
Northamptonshire	~	72	479	13.1%

Source: Individual Learner Records - LR - 0809 - Learners.xls (L02 Return, March Freeze)
 Note: ~ indicates a number of 5 or less which has been suppressed

46 Northamptonshire providers as shown in Table 20 support 13.1% of non-white learners within their E2E program. This compares well to the 'Population Estimates by Ethnic Group –Mid 2007'⁷ which indicates that 7.8% of all persons in Northamptonshire LSC area are Non White. Coverage is generally good across providers. Aston Recruitment & Training Ltd and Northamptonshire Industrial Training Association Ltd have the lowest representation of non white groups.

⁶ Source: Office of National Statistics

⁷ Source: Office of National Statistics

Table 21: Learners by Provider by Ethnicity and Funded by Nottinghamshire LSC

Provider Name	Unknown	Non-White	White	% Non White
Access Training (East Midlands) Ltd	~	13	93	12.3%
Castle College Nottingham	~	24	90	21.1%
Education & Youth Services Ltd		~	88	5.4%
Enterprise & Innovation Zone Ltd		~	19	5.0%
Jhp Group Limited		6	33	15.4%
Millbrook Management Services Ltd			14	0.0%
North Nottinghamshire College	~	~	66	0.0%
Nottingham City Council	~	26	105	19.8%
Rathbone Training		~	10	23.1%
South Nottingham College		~	21	12.5%
Stephenson College	~	~	53	5.4%
Strategic Training Solutions (Mansfield) Ltd		~	65	1.5%
The Bassetlaw Training Agency Ltd		~	31	6.1%
West Nottinghamshire College			14	0.0%
Nottinghamshire	16	87	702	11.0%

Source: Individual Learner Records - LR - 0809 - Learners.xls (L02 Return, March Freeze)

Note: ~ indicates a number of 5 or less which has been suppressed

- 47 Nottinghamshire providers as shown in Table 21 support 11.0% of non-white learners within their E2E program. This compares well to the 'Population Estimates by Ethnic Group –Mid 2007'⁸ which indicates that 8.8% of all persons in Nottinghamshire LSC area are Non-White. Castle College Nottingham and Nottingham City Council support the largest numbers of non-white learners within their E2E program. Providers below 6% are under representing the wider community. This may lead to a lack of provision within some parts of the area.

⁸ Source: Office of National Statistics

Average Length of Stay

Table 22: Average Length of Stay (in weeks) by Provider by Contracting LSC

Provider Name	Derbyshire	Nottinghamshire	Lincolnshire and Rutland	Leicestershire	Northamptonshire	Grand Total
Academy of Hair & Beauty Limited	11.9					11.9
Access Training (East Midlands) Ltd	18.7	19.3				19.2
Acorn Training Consultants Limited	18.7					18.7
Aston Recruitment & Training Limited					15.2	15.2
C G Partnership (Training Projects) Limited			15.7			15.7
Castle College Nottingham		11.2				11.2
Chesterfield College	6.3					6.3
Dart Limited	28.2					28.2
Derby City Council	4.0					4.0
Derby Skillbuild	11.6					11.6
Derbyshire and Nottinghamshire Chamber Of Commerce and Industry	17.5					17.5
Education & Youth Services Limited		18.6			18.7	18.6
Enterprise & Innovation Zone Limited		17.7				17.7
Hill Holt Wood			25.4			25.4
Intraining (Esd) Ltd	17.4					17.4
Isis Training & Recruitment Limited			15.2			15.2
JHP Group Limited		14.9				14.9
Juniper Training Limited	12.7					12.7
Kettering Borough Council					16.2	16.2
Key Training Limited					16.6	16.6
Leicester College				16.5		16.5
Lincolnshire County Council			17.3			17.3
Millbrook Management Services Limited	18.0	23.5				21.1
Moulton College					11.6	11.6
Nacro	13.3		17.3			15.7
National Council On Ageing	19.2					19.2
NLT Training Services Limited	15.1					15.1
North Nottinghamshire College		9.5				9.5
Northampton College					12.4	12.4
Northamptonshire Industrial Training Association Ltd					17.3	17.3
Nottingham City Council		20.8				20.8
Rathbone Training	15.5	5.2		15.8	16.4	15.7
Skegness College Of Vocational Training Limited			21.0			21.0
South East Derbyshire College	11.8					11.8
South Nottingham College		9.8				9.8
Starting Off (Kettering) Ltd.					13.5	13.5
Stephenson College		12.0		9.6		11.9
Strategic Training Solutions (Mansfield) Limited		15.7				15.7
Stubbing Court Training Ltd	14.5					14.5
TBG Learning Ltd	13.4					13.4

The Bassetlaw Training Agency Limited		25.3				25.3
Tresham Institute					12.3	12.3
University of Derby	16.0					16.0
West Nottinghamshire College		12.0				12.0
YMCA Derbyshire	13.0					13.0
YMCA Training			15.4			15.4
East Midlands	14.6	17.7	18.2	16.1	15.9	16.0

Source: Individual Learner Records - LR - 0809 - Learners.xls (L02 Return, March Freeze)

- 48 Whilst the data above represents a part year the average length of stay seems to be falling from 2007/08 (full year) levels. It should be noted that Nottinghamshire seems to have fallen from 24.6 to 17.7 weeks, although there is considerable variation between providers. The availability of Pre-E2E programmes and a reduction in the take up of certain courses which historically attracted a longer length of stay in the area, such as Construction, are potential explanations for this change.

2008/09 Outcomes

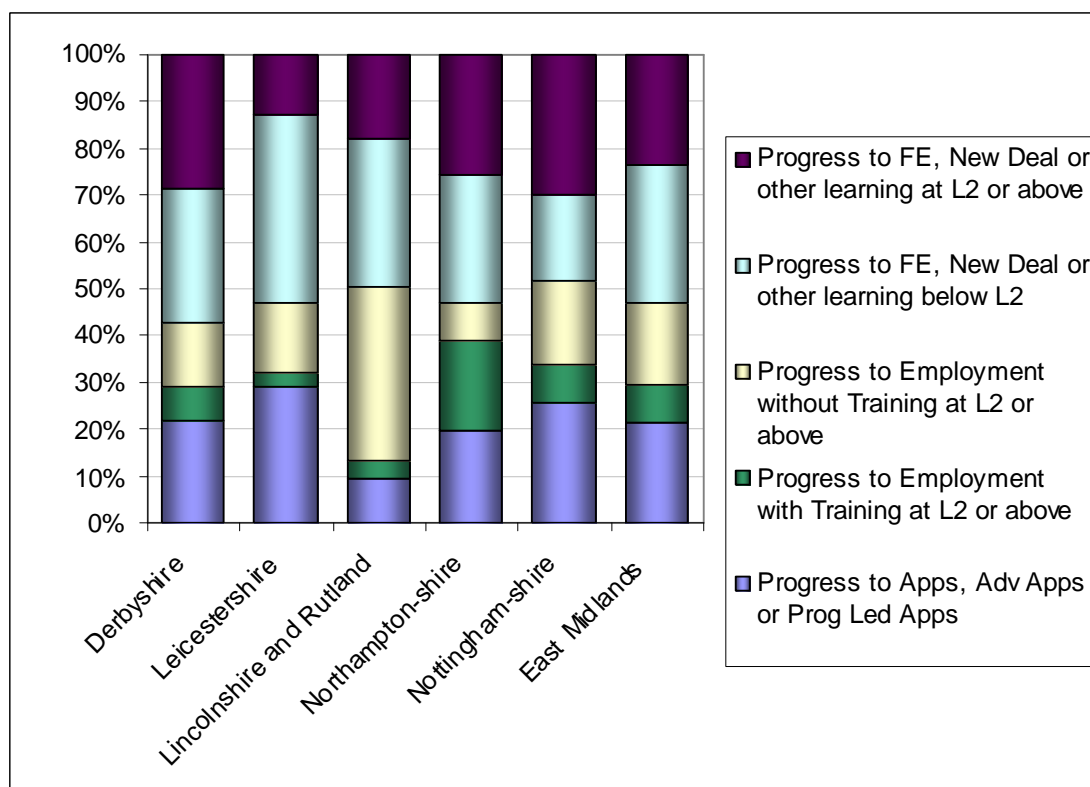
Table 23: E2E Outcomes by Contracting LSC

Contracting LSC	Progress to Apps, Adv Apps or Prog Led Apps	Progress to Employment with Training at L2 or above	Progress to Employment without Training at L2 or above	Progress to FE, New Deal or other learning below L2	Progress to FE, New Deal or other learning at L2 or above	Other	Reason Not Known	Grand Total
Derbyshire	58	20	36	77	76	270	289	826
Leicestershire	45	5	23	62	20	120	106	381
Lincolnshire and Rutland	12	5	47	40	23	117	56	300
Northampton-shire	22	22	9	31	29	116	47	276
Nottingham-shire	32	10	22	23	37	168	22	314
East Midlands	169	62	137	233	185	791	520	2,097

Source: Individual Learner Records - LR - 0809 - Learners.xls (L02 Return, March Freeze)

- 49 Using Table 23 above the large number of 'Reason Not Known' especially as recorded for Derbyshire and Leicestershire LSC learners is a concern as it makes analysis of positive outcomes more difficult and measurement of provider performance less reliable.

Figure 3: Distribution between types of Positive Outcomes



Source: Individual Learner Records - LR - 0809 - Learners.xls (L02 Return, March Freeze)

50 Review of Figure 3 raises a number of points:

- Progress to 'FE, New Deal or other learning at L2 or above' is highest in Derbyshire and Nottinghamshire (30% of all positive outcomes in each area). Is there a difference of approach in these LSC's, which leads towards learning at this Level 2 and above, and could this be good practice to be explored by others areas.
- Progress to 'FE, New Deal or other learning below L2' is high (40% of positive outcomes) in Leicestershire. Whilst progression to learning is good, this high proportion to levels below L2 is non typical.
- Progress to 'Employment without Training at L2 or above' is highest in Lincolnshire & Rutland (36% of all positive outcomes). Is this due to the nature of the program or the type of employment available in Lincolnshire & Rutland?
- Progress to 'Progress to Employment with Training at L2 or above' is high in Northamptonshire (approaching 20% of all positive outcomes in this area). Is there an approach in Northamptonshire that could be of value to other areas?
- Progress to 'Progress to Apps, Adv Apps or Prog Led Apps' is high in Leicestershire (29% of all positive outcomes) and Nottinghamshire (25%). Is there an approach in these areas that could be of value to other areas?

2008/09 Funding

51 This section contains information on funding allocation in 2008/09.

Table 24: E2E Funding in the East Midlands

Provider	LSC contracting area					Total
	Derbyshire	Nottinghamshire	Lincolnshire and Rutland	Leicestershire	Northamptonshire	
Academy Of Hair & Beauty Limited	£ 50,046					£ 50,046
Access Training (East Midlands) Ltd	£ 110,239	£ 304,666				£ 414,904
Acorn Training Consultants Limited	£ 162,541					£ 162,541
Aston Recruitment & Training Limited					£ 31,783	£ 31,783
Burton College	£ 38,049					£ 38,049
C G Partnership (Training Projects) Limited			£ 204,474			£ 204,474
Canto Limited					£ 262,673	£ 262,673
Carter & Carter Employability And Skills Limited	£ 119,547					£ 119,547
Castle College Nottingham		£ 379,307				£ 379,307
Chesterfield College	£ 114,208					£ 114,208
Dales Agriculture & Rural Training Limited	£ 49,272					£ 49,272
Derby City Council	£ 59,044					£ 59,044
Derby Skillbuild	£ 180,275					£ 180,275
Derbyshire And Nottinghamshire Chamber Of Commerce And Industry	£ 747,026					£ 747,026
Derbyshire County Council	£ 170,970					£ 170,970
Education & Youth Services Limited		£ 185,419			£ 523,104	£ 708,523
Enterprise & Innovation Zone Limited		£ 62,581				£ 62,581
Hill Holt Wood			£ 153,021			£ 153,021
ISIS Training & Recruitment Limited			£ 335,560			£ 335,560
JHP Group Limited		£ 125,081				£ 125,081
Juniper Training Limited	£ 422,812					£ 422,812
Kettering Borough Council					£ 169,343	£ 169,343

Key Training Limited					£ 110,394	£ 110,394
Leicester College				£ 944,634		£ 944,634
Lincolnshire County Council			£ 264,065			£ 264,065
Lincolnshire Rural Activities Centre			£ 134,844			£ 134,844
Millbrook Management Services Limited	£ 61,131	£ 57,091				£ 118,222
Moulton College					£ 85,462	£ 85,462
NACRO	£ 230,764		£ 288,989			£ 519,753
National Council On Ageing	£ 209,885					£ 209,885
NLT Training Services Limited	£ 96,180					£ 96,180
North Nottinghamshire College		£ 285,207				£ 285,207
Northampton College					£ 304,848	£ 304,848
Northamptonshire Industrial Training Association Limited					£ 71,369	£ 71,369
Nottingham City Council		£ 414,312				£ 414,312
Nottinghamshire County Council		£ 1,172,766				£ 1,172,766
Rathbone Training	£ 328,188			£ 1,415,137	£ 529,410	£ 2,272,735
Skegness College Of Vocational Training Limited			£ 457,192			£ 457,192
South East Derbyshire College	£ 453,743					£ 453,743
South Nottingham College		£ 158,730				£ 158,730
Starting Off (Kettering) Ltd.					£ 63,672	£ 63,672
Stephenson College		£ 220,082				£ 220,082
Strategic Training Solutions (Mansfield) Limited		£ 181,712				£ 181,712
Stubbing Court Training Limited	£ 15,255					£ 15,255
TBG Learning Ltd	£ 367,012					£ 367,012
The Bassetlaw Training Agency Limited		£ 206,850				£ 206,850
Tresham Institute					£ 255,037	£ 255,037
University Of Derby	£ 78,995					£ 78,995
West Nottinghamshire College		£ 81,012				£ 81,012
YMCA Derbyshire	£ 191,529					£ 191,529
YMCA Training			£ 122,898			£ 122,898
Total	£ 4,256,710	£ 3,834,815	£ 1,961,042	£ 2,359,770	£ 2,407,095	£ 14,819,433

Source: Allocations mail merge v10 18708 Spreadsheet

**Learning and Skills Council
East Midlands Regional Office**

17A Meridian East
Meridian Business Park
Leicester, LE19 1UU

Tel: 0845 019 4170
Fax: 0116 228 1801

<http://www.lsc.gov.uk/regions/EastMidlands>

© LSC September 2009
Published by the Learning and Skills Council

Extracts from this publication may be reproduced for non-commercial educational or training purposes on condition that the source is acknowledged and the findings are not misrepresented.

This publication is available in electronic form on the Learning and Skills Council website: www.lsc.gov.uk

If you require this publication in an alternative format or language, please contact the LSC Help Desk: 0870 900 6800

Publication reference: LSC-P-EM-540000