

Train to Gain Provider Event

Yew Lodge Hotel Kegworth 31 July 2008

WELCOME

LSC EM

AGENDA

- 09:30 Registration and Refreshments All
- 10:00 Welcome & Introductions TB
- 10:10 Performance AB
- 11:00 Increased Flexibilities – Part 1 TB
- 11:30 Break All
- 11:45 Increased Flexibilities – Part 2 TB
- 12:15 Skills Brokerage MS
- Leadership & Management MS
- 12:45 QIA - World Class Skills Programme RB
- 13:15 Closing Remarks TB
- 13:30 Lunch and Networking All

PERFORMANCE

Andrew Barlow

EMLSC

YEAR END TARGETS

- Skills for Life Starts 6649
- Skills for Life Achievements 3949

- Level 2 Starts 30326
- Level 2 Achievements 17765

- Level 3 Starts 2257
- Level 3 Achievements 18

Skills For Life Targets

	Starts	Outcomes
Nottinghamshire	1760	1051
Region	1659	973
Leicestershire	1139	683
Derbyshire	1113	668
Lincolnshire	631	373
Northamptonshire	347	201
Totals	6649	3949

Level 2 Targets

	Starts	Outcomes
Nottinghamshire	8197	4773
Region	7636	4496
Leicestershire	4537	2633
Derbyshire	4427	2633
Lincolnshire	3112	1814
Northamptonshire	2417	1416
Totals	30326	17765



Period 10 Performance

Out of 9 Regions:

👉 Level 2 Starts 20,565

Were 4th now 3rd

👉 Level 2 Outcomes 9,530

Were 3rd now 4th

👉 SfL Starts 2,711

Were 6th now 5th

👉 SfL Outcomes 742

Were 7th now 7th

Period 10 Performance – Some comments

☞ Level 2 Starts

The gap between our regional performance and the national average at the end of May 2008 has increased from 15% to 18% above the national average and our regional position has improved from joint 3rd. to 3rd outright.

☞ Level 2 outcomes

The gap between our regional performance and the national average at the end of May 2008 has improved from 13% to 15% but our regional position has slipped back from joint 3rd to 4th.

Period 10 Performance - Some comments

☞ Skills for Life starts

We have seen a continuation in May of the marked improvement in participation we saw in the last 3 periods and this has seen our regional performance move further in front of the national average. In April we were 7% above the national average and this has increased to 8% in May 2008.

☞ Skills for Life outcomes

The gap between our regional performance and the national average at the end of May 2008 has increased from 8% behind the national average to 9%, but our regional position has remained the same at 7th. On a more positive note our achievement against our YTD profiles has improved from 30% in April to 35% in May 2008.

Performance to Period 10 against contractual volumes



	Profile	Actual
• SFL Starts	5593	2711
• SFL Outcomes	2567	742
• Level 2 Starts	26268	20565
• Level 2 Outcomes	13230	9530

Performance to Period 11

Performance to Period 11 against contractual volumes



	Profile	Actual
• SFL Starts	6030	3270
• SFL Outcomes	2964	944
• Level 2 Starts	29373	24075
• Level 2 Outcomes	15640	11371

Skills For Life – Starts to P11

	Profile	Actual
Northamptonshire	331	418
Region	1651	1355
Derbyshire	1006	612
Nottinghamshire	1365	413
Leicestershire	1049	305
Lincolnshire	555	124
Totals	6030	3270

Skills For Life – Outcomes to P11

	Profile	Actual
Northamptonshire	164	132
Derbyshire	554	263
Region	796	267
Nottinghamshire	668	170
Leicestershire	436	91
Lincolnshire	325	10
Totals	2964	944

Level 2 – Starts to P11

	Profile	Actual
Leicestershire	4252	4490
Derbyshire	4056	3859
Nottinghamshire	7057	6072
Lincolnshire	2910	2205
Northamptonshire	2338	1621
Region	7473	4878
Totals	29373	24075

Level 2 – Outcomes to P11

	Profile	Actual
Derbyshire	2265	2294
Leicestershire	2304	2196
Nottinghamshire	3584	2680
Region	3857	2280
Lincolnshire	1636	907
Northamptonshire	1351	717
Totals	15640	11371

Period 11 Performance v Year End

Require by P12

👉 Level 2 Starts	24075	6251
👉 Level 2 Outcomes	11371	6394
👉 SfL Starts	3270	3379
👉 SfL Outcomes	944	3005

YEAR END TARGETS v FORECASTS

	Forecast	Require by P12
• SFL Starts	3500	121
• SFL Outcomes	1100	156
• Level 2 Starts	27000	2925
• Level 2 Outcomes	15000	3629

TRAIN TO GAIN

Arrangements for 08/09

TRAIN TO GAIN

Significant enhancements to the service - June 08

Update since publication

- Volunteers
- Self-employed
- Employers are now engaged in Local Employment Partnerships – so expect individuals to start pre-employment training leading on to Train to Gain and second level 2s where appropriate
- Sector compacts – first one now agreed SEMTA – focus on regional implementation
- Leadership and management procurement completed
- Large Company Service launched in regions

The Scale of the Challenge – East Midlands

Expected Growth Volumes:

	07/08	08/09
Learners' (000) Total	54160	73069
SfL	2500	6500
Level 2	43430	54000
Level 3	6374	10000
Level 4	-	1069
Foundation Learning Tier	-	1855

Budget

- Regional £91,696,438
- Level 2 £64,602 310
- Level 3 £19,440,273
- SfL £5,392,703

Summary of Significant Changes for 2008/09



- Allow a proportion of economically valuable 'additional' Level 2 qualifications
- Increase Train to Gain funding rates by 9% over 3 years
- Agree and implement six sector compacts by September 2008
- Improve take-up of Level 3
- Clarify public sector eligibility for Train To Gain and drive take up through 'public service skills compacts'
- Improve performance on Skills for Life

☞ **Streamlined procurement and contracting**

- » For this year's OCT – 3 year contracts, extendable to 5
- » Providers who hold an Apprenticeship contract can negotiate to include TTG provision (and vice versa)
- » Providers who don't currently hold a TTG contract and not in a consortium and come to the table with employers will be able to apply for a contract – subject to the normal checks – immediately
- » Able to increase their contracts both in their existing region and across the country
- » A single funding stream for all employer based NVQ provision – including that previously delivered through FE
- » Reduction in the higher/lower funding threshold from 20 to 15 hours

All subject to financial, quality and health and safety approval

Supported by (2):



Refreshed marketing and communications

- » National marketing campaign, supplemented by activity in each region as well as increased sector based activity
- » Enhanced stakeholder communications
- » Enhanced 'delivery chain' communications

👉 Further investment in provider capacity

- » The LSC will work with LSIS and DIUS to shape this investment
- » Build on the QIA commissioned programme World Class Skills – developing responsive provision – delivered by KPMG
- » Will take in to account the findings from the LSCs Supply Chain Review which is due to conclude in July

Training Quality Standard

Communicating a Plan for Growth and the new Flexibilities



- Immediate communications plan – focus on LSC and colleges, training providers and skills brokers
- New ongoing Delivery Chain Communications Plan
- New Stakeholder Plan – focus on opinion formers
- Refreshed August TV and PR campaign
- Development of a new integrated, comprehensive marketing and communications plan – draft with Ministers by the end of July

Communicating a Plan for Growth and the new Flexibilities (2)



- LSC Internal
 - regular internal bulletins to regions and national office functions
 - new intranet site with latest information and documents
- Providers
 - new page for providers on the LSC intranet
 - key documents and information in one place
- Employers
 - New website to be launched in July 2008
- Brokers
 - Regular bulletins and broker website

FUNDING

Funding Formula

$$\begin{aligned} &\text{Standard Learner Numbers (SLN)} \\ &\quad \times \\ &\quad \text{National Rate (NBR)} \\ &\quad \quad \times \\ &\quad \quad \text{Provider Factor (PF)} \\ &\quad \quad \quad + \\ &\quad \quad \quad \text{Additional Learning Support (ALS)} \end{aligned}$$

Funding Formula

75% profile payments

25% on achievement

Funding Rates

👉 Level 2

High Rate SLN = $0.429 \times \text{£}2858.00 = \text{£}1,226$

Low Rate SLN = $0.286 \times \text{£}2858.00 = \text{£}817$

High/low rate differentiator – 15 hours

Funding Rates

👉 Level 3

Fully funded SLN = $0.644 \times \text{£}2858.00 = \text{£}1,840$

Co-funded SLN = $0.429 \times \text{£}2858.00 = \text{£}1,058$

Co-funded assumed 42.5% contribution

Funding Rates

👉 Level 1/Foundation Learning Tier
Same as Level 2

👉 Level 4
Same as level 3

👉 Skills for Life

Fully Funded SLN = $0.18 \times \text{£}2858.00 = \text{£}514$

Maximum Contract Value

- ➡ A combination of funding from three sources
- ➡ Train to Gain negotiated activity with existing providers
- ➡ Train to Gain OCT process
- ➡ Transfer of FE NVQs in the workplace

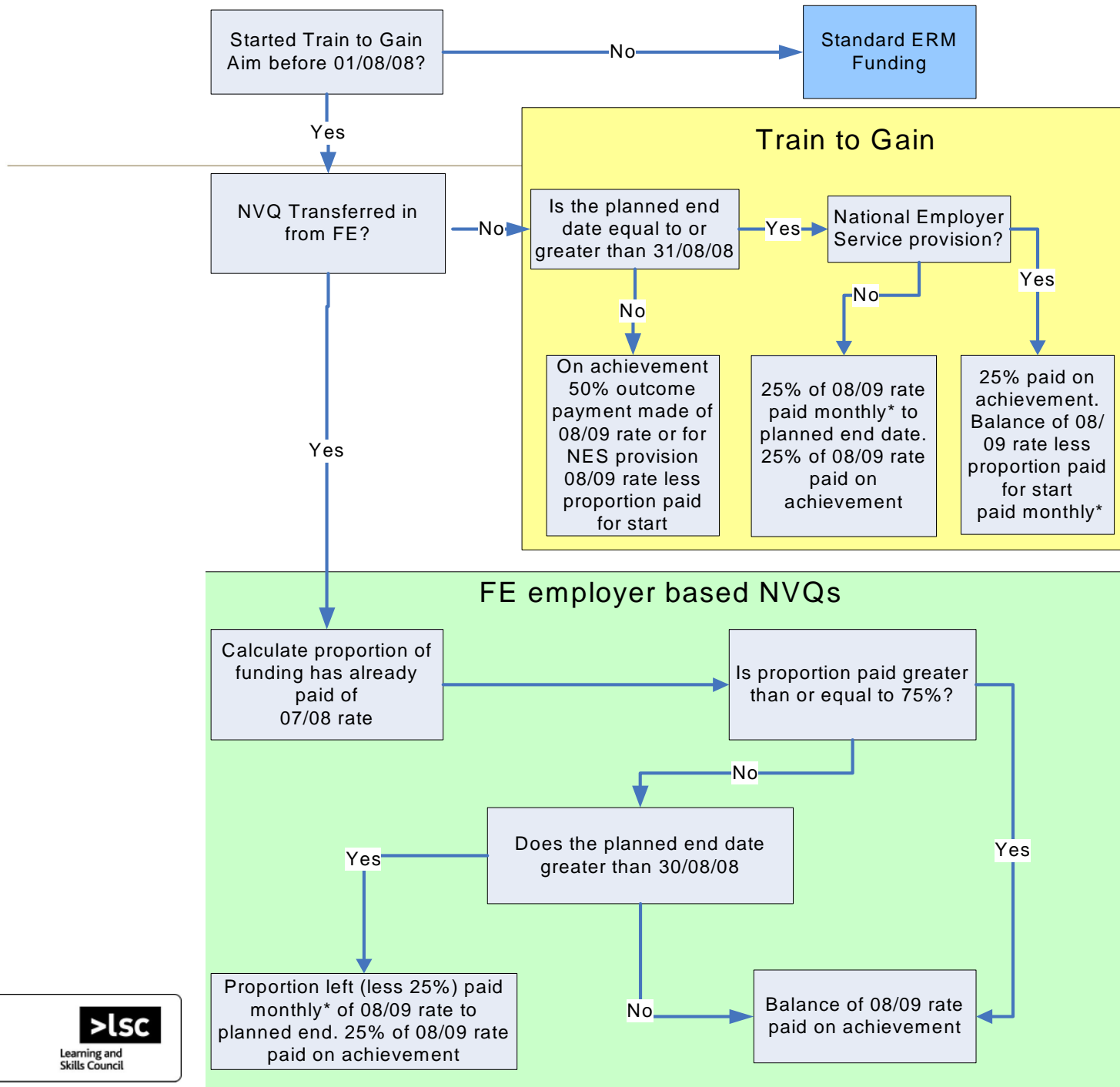
Maximum Contract Value

- ➔ Convert FE Transfer Budget into learner numbers

- ➔ Convert Train to Gain learner numbers into money

FE Transfer

- ☞ 08/09 transitional year
- ☞ Relaxations about “firstness”
- ☞ L2/L3 Volumes based on historic mix
- ☞ L1 volumes based on historic patterns
- ☞ L4 volumes based on historic patterns



Maximum Contract Value

- ➡ Clarified through dialogue meeting
- ➡ One contract. Same rules apply
- ➡ Aggregate targets
- ➡ NOT a guarantee of income
- ➡ Payment based on actuals
- ➡ Contract value can grow/reduce in-year based on performance

Eligibility

Level 2

Qualification	Notes
First full level 2	Fully funded subject to meeting general Train to Gain eligibility rules.
<p>“Additional” full level 2 for those learners who already possess a Level 2 qualification or above</p> <p>An “additional” level 2 may be a second, third or subsequent qualification</p> <p>Up to 30% of Level 2 qualifications delivered through Train to Gain in each LSC Region can be additional Level 2 qualifications.</p> <p>NOTE <i>There are no co-funded Level 2 qualifications within Train to Gain/Employer Responsive Funding in 2008/09.</i></p>	<p>Fully funded subject to meeting general Train to Gain eligibility rules and</p> <p>Is a qualifications as identified by a Sector Skills Council through</p> <ul style="list-style-type: none"> a Sector Compact and/or a Sector Qualification Strategy <p>The balance of first and ‘additional’ Level 2s will be agreed with each college and training provider.</p>

Level 3

Qualification	Notes
First Full Level 3 for learners NOT possessing a first Level 2 qualification or above. (Level 3 Jumpers)	Fully funded at the Level 3 rate subject to meeting general Train to Gain eligibility rules
First Full Level 3 for learners aged 19-25 to commence from Autumn 2008.	Extension of 19-25 Entitlement. Fully funded subject to meeting general Train to Gain eligibility rules.
First Full Level 3 for learners possessing a first Level 2 qualification.	Co-funded at an expected employer contribution of 42.5% subject to meeting general Train to Gain eligibility rules
<p>“Additional” full level 3 for those learners who already possess a Level 3 qualification or above An additional level 3 may be a second, third or subsequent qualification The LSC will support a proportion of ‘additional’ Level 2 and 3 qualifications through compacts. Up to 20% of Level 3 qualifications delivered through Train to Gain in each LSC Region can be additional Level 3 qualifications.</p>	<p>Co-funded at an expected employer contribution of 42.5% subject to meeting general Train to Gain eligibility rules and Is a qualifications as identified by a Sector Skills Council through a Sector Compact and/or a Sector Qualification Strategy The balance of first and ‘additional’ Level 3s will be agreed with each college and training provider.</p>

Level 4/5

Qualification	Notes
<p>First Full Level 4 for learners NOT possessing a first Level 3 qualification or above. (Level 4 Jumpers)</p>	<p>Level 4 Jumpers aged 19-25 will be fully funded as part of the extension of 19-25 Entitlement subject to meeting general Train to Gain eligibility rules.</p> <p>Where learner is aged 25+ co funded at the Level 3 rate with an expected employer contribution of 42.5% subject to meeting general Train to Gain eligibility rules</p>
<p>Level 4/5 Qualifications for any other type of learner.</p>	<p>Only fundable through FE colleges as part of the 08/09 transfer arrangements and is on the agreed list of eligible qualifications negotiated between the FE college and the LSC</p> <p>Co-funded at the Level 3 rate with an expected employer contribution of 42.5% subject to meeting general Train to Gain eligibility rules.</p> <p>Actual levels of activity will be agreed with each college. Future positioning of Level 4/5 funding is currently under review.</p>

Level 1 Foundation Learning Tier

Qualification	Notes
<p>Full Level 1 for learners irrespective of prior qualifications where it supports progression onto a higher level qualification.</p>	<p>Fully funded at the Level 2 rate subject to meeting general Train to Gain eligibility rules.</p> <p>Only fundable through FE colleges as part of the 08/09 transfer arrangements and is on the agreed list of eligible qualifications negotiated between the FE college and the LSC</p> <p>Actual levels of activity will be agreed with each college</p>

Skills for Life

Qualification	Notes
<p>A single full literacy qualifications at Entry Level 1, 2 or 3 and numeracy qualification at entry level, level 1 or level 2 for learners irrespective of prior qualifications</p>	<p>Fully funded subject to meeting general Train to Gain eligibility rules.</p>
<p>ESOL qualifications</p>	<p>Co- funded with an expected contribution of 42.5% subject to meeting general Train to Gain eligibility rules</p>

Other Issues

➡ ESF

➡ Minimum Levels of Performance

➡ ILR Data Submission - 4 working Days after period end date

➡ 11th working day BACS transmission for payment

➡ Profile Payment for first 1/4: 50/25/25

Questions