



Learning and Skills Council
East of England

Felaw Maltings
42 Felaw Street
Ipswich
IP2 8SJ
T 0845 019 4180
F 01473 883090
www.lsc.gov.uk/eastofengland

© LSC February 2009.
Published by the Learning and Skills Council.

Extracts from this publication may be used for non-commercial educational or training purposes, on condition that the source is acknowledged and the findings are not misrepresented.

This document is available in electronic form on the Learning and Skills Council website:
www.lsc.gov.uk/eastofengland

Available in other formats on request.

Correct at time of going to print in February 2009.

Funded by:



Directory of Apprenticeships 2009

East of England

Want good training,
good career prospects and
a good wage?



Take a look at
Apprenticeships.

Funded by:



Contents

Introduction	3
Success stories of real-life apprentices	4 - 5
What's it all about?	6 - 15
Providers	16 - 41
Administration and Human Resources	16
Agriculture and Land Based Services	19
Arts, Creative and Cultural Industries	21
Automotive Industry and Passenger Transport	22
Chemical, Oil and Nuclear Industry	23
Construction	23
Customer Service and Retail	24
Electrical and Engineering	27
Energy/Utilities Industry	31
Financial Service	32
Food and Drink	32
Hair and Beauty	33
Hospitality and Travel	34
Information Technology and Communications	35
Logistics	36
Manufacturing and Processing	37
Marine Industry	38
Property	38
Public Services	39
Sports and Fitness	41
What next?	42 - 43
Contact details	44 - 45
Index	46 - 47

Introduction

Best of both worlds

With an Apprenticeship or Advanced Apprenticeship you can earn while you learn. You'll get high quality on-the-job training and develop your prospects and career. There are more than 180 Apprenticeships available across 80 different sectors. Whoever you are, whoever you want to be... there's an Apprenticeship for you.

What would they lead to?

You'll get a package of qualifications when you finish your Apprenticeship which will be recognised by any employer, anywhere in the country. That means you can change jobs and take your skills and qualifications with you. Apprenticeships are designed with the help of the employers in the industry, so they offer a structured programme that takes you through the skills you need to do a job well. They are also a debt-free option compared to university - and you can go onto university afterwards if you want to.

Tempted?

If you have the dedication to succeed and enjoy learning by doing, then an Apprenticeship could be the start of a successful journey for you.

All apprentices receive a wage of no less than £80 per week and this will rise to £95 from August 2009. However, recent research found that apprentices earn an average of £170 net pay per week.

Apprenticeships are now open to everyone over 16.

Vacancy Matching Service

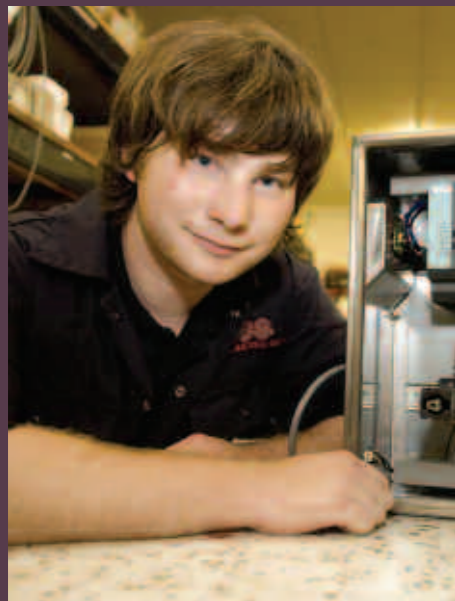
An Apprenticeship vacancy matching service is available via www.apprenticeships.org.uk which will enable you to search for Apprenticeship opportunities by location and occupation and then apply online.

All information here is as complete and accurate as we could make at time of going to print, however details constantly change, so please log onto www.apprenticeships.org.uk or contact your local college or the relevant training provider (see Contact details on pages 44-45) to keep up to date with the latest information.

Remember, if you can't see the Apprenticeship that you want, it is still worth checking with your local college. There may be courses that aren't listed in this directory.



Success stories of real-life apprentices



Jamie Wales

Having overcome dyslexia to achieve distinctions in both his Apprenticeship and Advanced Apprenticeship, Jamie Wales, from Wisbech, has been named as Cambridgeshire's Apprentice of the Year - proving on-the-job training can lead to career success.

Jamie joined the electrical engineering company, TES (Europe) Ltd, based in Wisbech, as a technician apprentice four years ago after finishing school. He found that the combination of on-the-job training combined with a day release to college really suited him. Having worked meticulously to achieve his Advanced Apprenticeship six months earlier than expected the 20-year-old has become a real asset to his company.

Jamie now plans to continue his higher education whilst working at TES by studying for a Higher National Certificate (HNC) in Engineering, again on a day release college course through the College of West Anglia.

Jamie believes that his Apprenticeship training has given him added skills that he might not have been able to achieve in the classroom.

"I have met a broad range of people and now feel comfortable communicating at all levels," he said.

"This has really boosted my confidence and as a result I have got involved in a number of voluntary activities within my local community."



Kane Hughes

After leaving school, Kane Hughes, 18, joined an Association of Accounting Technicians (AAT) course through WS Training. The course led to an Apprenticeship, allowing him to work full-time and gain practical experience while continuing to learn. Kane started working at Mid Suffolk District Council as an apprentice in September 2006. His responsibilities included auditing contracts and system audits, administration and diary management.

Kane said: "I'd always had a real interest in finances so accountancy seemed like the natural choice of career move for me and an Apprenticeship was a direct route to the profession. It was a real benefit being able to work and get a qualification at the same time; it's one of my greatest achievements so far."

In less than two years, Kane has not only completed Levels 2 and 3 of the AAT course, but has also been promoted and is now working at

Customer Service Direct (CSD) as a finance assistant. He is now halfway through achieving the Level 4 standard which will give him another qualification.

Kane has more responsibility in his new role and is enjoying the work. He said: "I work in a section which covers finance for children and young people and offers services to places like children's centres."

Kane plans to complete his Apprenticeship and then go on to further education to become a fully qualified accountant.

Kane says he would encourage anyone interested in getting a kick start to a good career to consider taking part in an Apprenticeship. "The Apprenticeship appealed to me because you can earn money but get a great qualification at the same time. It has given me invaluable practice in the workplace and given me more life experience that will help in my career. It has taught me commitment, maturity and responsibility."



Janet Mansell

Janet Mansell, 20, from Stevenage, Hertfordshire was crowned Advanced Apprentice of the Year in the East of England Apprenticeship Awards 2008. She is completing a Commercial Apprenticeship whilst working at MBDA UK Ltd and has proved a major asset to the company, saving them money by implementing new stock control measures and coming top of her university class.

On a daily basis, Janet is responsible for managing suppliers for her employer. This involves purchasing missile equipment up to the value of £2.5 million. Janet has benefited greatly from her Apprenticeship and in just two years her confidence has grown rapidly due to the endless opportunities provided by the company.

Janet said: "It was a very proud moment for me to win this award. It was a great honour for me but also for the company. It recognises that the MBDA commercial Apprenticeship is amongst the best in the country.

"When I look forward to completion of my programme I know that, if I keep working hard, I will finish with a good degree and be offered a challenging role within MBDA which we, the company and I, know will be the best opportunity for me to continue developing my career.

Janet's employer, MBDA UK, has also been recognised for its successes with Apprenticeships and was highly commended in the Large Employer of the Year category.



Phillip East

A 20-year-old from Aylsham has been named Norfolk's Apprentice of the Year by the Learning and Skills Council (LSC).

Phillip East is a customer service engineer for Openreach, part of the BT Group, and is responsible for the provision and maintenance of local access communications networks within an engineering team. He joined the company from Easton College in 2005, on an Advanced Apprenticeship, which he completed in August 2008.

Phillip said: "Doing the Apprenticeship has allowed me to develop core skills so that I can get better at my job and progress within the company. I've also had fantastic opportunities I otherwise wouldn't have had which have made a huge difference to my confidence and overall ability. I've completed training with the Territorial Army's 81st signal squadron, built a mini-telephone exchange to simulate 999 calls, worked with the Scouts and educated children about the environment."

Phillip has also taken on responsibility for coaching and mentoring other apprentices at Openreach, and has helped with their inductions and organising team events, as well as more routine duties such as carrying out safety and quality checks on their work.

He said: "It's been really rewarding to coach more junior apprentices and be involved in their development. I've also helped them with their training and in learning skills for their job. If they have any issues, it's sometimes easier to talk to someone who has recently been in the same position as them."

While on the course, Phillip has gained a BTEC in Telecommunications and was the first in his team to complete an NVQ in ICT. He is currently working towards a degree in Business Management through the Open University.

He said: "An Apprenticeship is ideal for someone who wants to learn while they earn, get on-the-job training and skills, as well as real future job prospects."

What's it all about?

Whatever you're interested in, there's probably an Apprenticeship for you. Here's an overview of Apprenticeships in the East of England.



Administration and Human Resources

Advice and Guidance

This Apprenticeship covers skills that are transferable across a broad range of sectors - you could find yourself in a building society, advising on financial matters; in a visitor centre, recommending day excursions; or offering advice as a support worker with social services... the possibilities are endless in this growing field.

No matter what type of organisation you work for, you'll learn about its core values, services and procedures, which will help you to assist customers.

Business Administration

The term 'administration' covers roles that involve organising people and resources, including secretaries, administration assistants, data entry clerks and office juniors.

Your exact duties will depend on your employer. It's likely that you'll be working with a team or member of staff to handle various tasks. You may be typing up board meeting documents, putting financial information together in spreadsheets, sending the daily post or faxing and photocopying confidential documents.

Learning and Development/ Direct Training and Support

Learning and development is about helping people learn new skills and improve their existing ones. Some trainers are employed within an organisation to run training programmes for new recruits, or to assess the needs of existing staff and help them to develop their skills.

There are also consultancy companies that offer specialised training programmes, such as computer skills or management techniques.

Management

Management skills are required in all organisations and in many different job roles. A manager needs to make the most of the resources at his or her disposal. You need to be a natural leader and a great motivator.

You will learn about motivating your staff; setting budgets and dealing with money; and creating a strong corporate identity so that people will want to work for the company.

Agriculture and Land Based Services

Agriculture, Crops and Landscape

Agriculture deals with the production and management of primary food groups, from dairy and meat to cereals and vegetables. It also includes non-food crop development, such as those used to make bio-fuel or clothing.

On this Apprenticeship, you'll learn skills like how to prepare and cultivate sites for planting extensive crops; how to operate a tractor with attachments; and how to maintain equipment and machines.

Amenity Horticulture

Amenity horticulture (sometimes called landscaping) covers the design, planning, creation, and maintenance of designed landscapes, both urban and rural.

The nature of your Apprenticeship will depend on your employer - you could find yourself working as a landscaper or gardener, for example.

Animal Care

Work in this industry covers the health, welfare, handling and supervision of small animals - whether that's working in a zoo or wildlife park, or for the RSPCA.

This Apprenticeship is broken down into nine occupational routes: animal care, zoos/wildlife establishments, dog grooming, pet care and retail, boarding, animal welfare, breeding, animal training or open farms. The Advanced Apprenticeship covers the same routes, with the addition of dog/animal warden.

Environmental Conservation

Environmental conservation involves a range of activities, from recycling household waste to habitat management. While green issues play an important role in conservation, it's really a question of using scientific knowledge to achieve solutions that will provide a sustainable environment - the protection of rural and urban landscapes, plants, animals and waterways.

On this Apprenticeship, you'll choose between three routes: environmental conservation; community recycling; or rivers, coasts and waterways.

Equine

Work in the equine industry covers the welfare, supervision and riding of horses. It offers a range of opportunities from livery operations to thoroughbred racehorse training.

Employers include riding schools, livery yards, breeders, trainers and those involved in other equine-related activities like equine massage and dentistry.

Depending on your employer, you could find yourself as a jockey, stable hand, groom, stud assistant or riding instructor. There are plenty of roles away from the stables, too.

Floristry

Floristry involves working with flowers and the design and assembly of floral displays. As well as selling flowers to the general public, florists also cater for large-scale events such as christenings, birthdays, weddings, funerals, sporting events, conferences and state occasions.

Because businesses are small, florists must possess a variety of skills including sales, marketing, promotion, accounts and stock ordering.

Land-Based Service Engineering

Land-based service engineers work to solve problems in the agricultural industry using a combination of scientific, technical and engineering knowledge. They're the people behind the development of farmyard machinery, irrigation systems, industrial-sized greenhouses and forestry equipment.

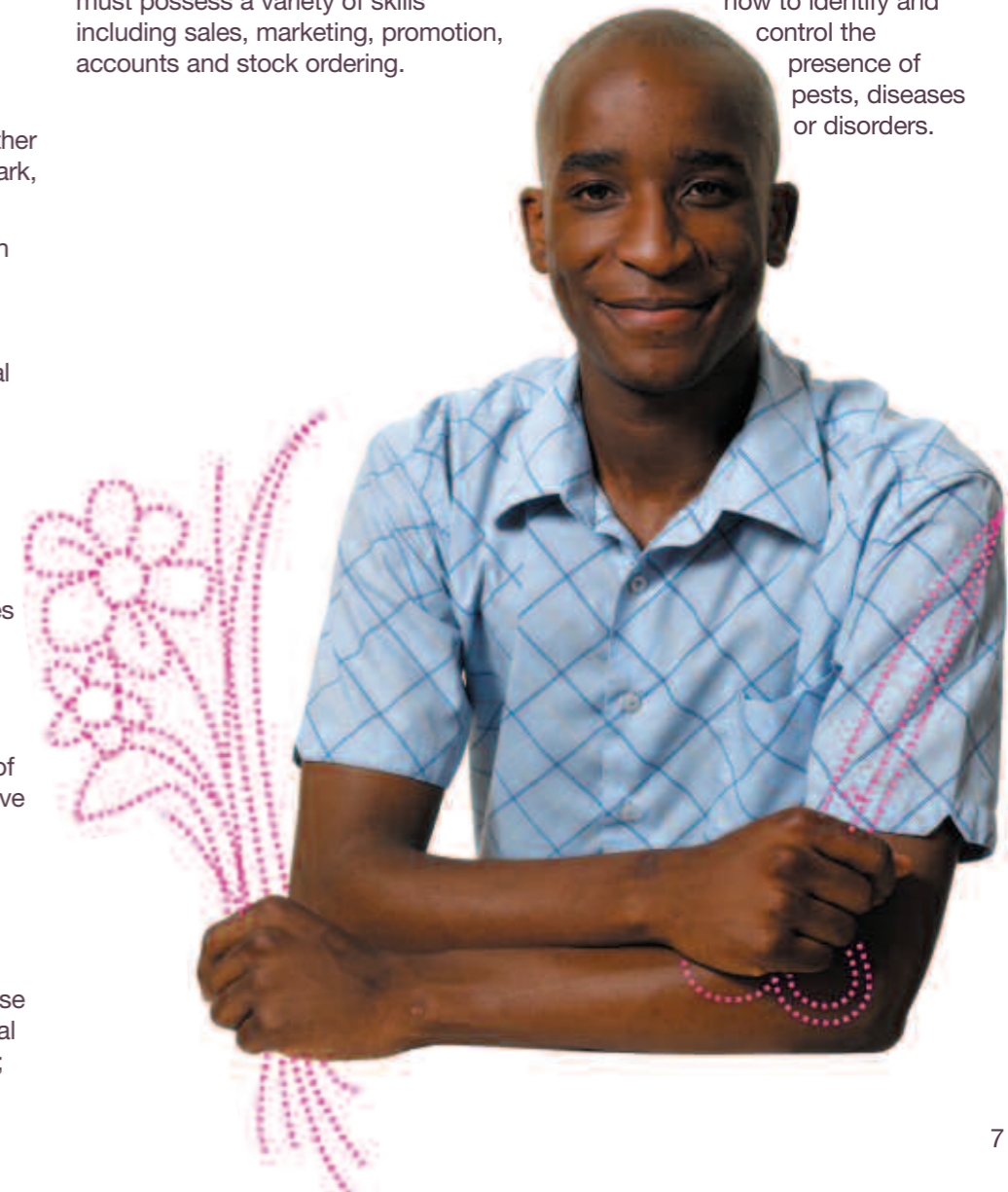
Opportunities in this area include design development, manufacturing, field engineering, service engineering, and sales and marketing.

Production Horticulture

Production horticulture deals with the production of fruit, vegetables, herbs, and plants for local, national and international markets.

Businesses range in size from small private nurseries to large production organisations, covering orchards, specialist farms and greenhouses.

You'll learn how to clear and prepare sites for planting; how to monitor and maintain the growth of crops; and how to identify and control the presence of pests, diseases or disorders.



Veterinary Nursing

Veterinary nurses support veterinary surgeons in providing expert care for sick animals.

In addition, veterinary nurses will carry out a range of diagnostic tests, medical treatments and minor surgical procedures under the supervision of a veterinary surgeon. They also help to educate owners about maintaining the health of their pets.

On this Apprenticeship, you'll probably work with domestic animals such as cats and dogs, although you could be working with horses and farm animals too.

Arts, Creative and Cultural Industries

Creative Apprenticeship

Entry into the creative industries traditionally required a degree, personal contacts or unpaid work. However, the new Creative Apprenticeships provide a cost-effective alternative. From helping to run a record label's office or organising community arts, to managing costumes or running the box office, there are many opportunities.

One key area is live events and promotion. Organising events will feed your creative cravings and test your organisational skills; while devising and implementing promotion ideas requires drive and enthusiasm.

There are also more technical roles. Theatre technicians install and operate sound and lighting equipment, while wardrobe technicians organise performers' costumes.

Automotive Industry and Passenger Transport

Aviation

Airports in the UK require a range of employees - check-in staff, baggage handlers, customer service agents and ramp side operators - to keep things running smoothly on the ground.

Many of the jobs available centre around ground operations. On this Apprenticeship, you could be loading and handling baggage and freight; helping to move an aircraft to the right place for refuelling; checking in passengers; or assisting in airfield maintenance. Ground handling staff are usually employed by an independent company that works across a number of different airlines.

Rail Transport Operations

Rail transport operations involves many things, like driving the trains, operating signals, communicating between stations and trains, assisting passengers, and moving trains into position at stations.

On this Apprenticeship, you'll choose your area of specialisation - shunting (moving trains from place to place), signal operations, control room operations or passenger services. Within each, you'll learn how to develop and maintain working relationships, how to get and give information, and how to work in a safe working environment.

Retail Motor Industry - Vehicle Maintenance and Repair, Body and Paint Operations

Apprentices will choose one of three routes: mechanical, electrical and trim body fitting; body repair; or body finishing. Mechanical, electrical and trim technicians repair moving parts and electronics.

Body repair technicians fix the external body of the car. Body refinishing technicians add the final surface touch by applying primers and paint so everything looks as good as new.

Chemical, Oil and Nuclear Industry

Chemical, Pharmaceutical, Petrochemical Manufacturing and Refining Industries

The chemical, pharmaceutical, petrochemical manufacturing and refining industries produce many of life's necessities. The chemicals industry makes products like pharmaceuticals and soaps.

The petroleum refining industry is responsible for turning crude oil into fuels and lubricants.

On this Apprenticeship, you could be working in a variety of roles. A process operator or technician controls and monitors the systems and machinery. A maintenance technician maintains the equipment. And a laboratory assistant or technician provides analytical support, testing samples. In refinery operations, you monitor and assist in the production of petroleum products.

Construction (Craft)

including Carpentry and Joinery, Painting and Decorating & Bricklaying

Bricklaying

Bricklaying is one of the most popular Apprenticeships in construction.

Bricklayers use a wide range of materials and techniques to construct the walls of different types of buildings. They build brickwork and blockwork that can be covered with plaster, render, or high-quality decorative work. Some bricklayers become experts in restoring old buildings.

As an Apprentice bricklayer, you'll learn various skills and techniques to allow you to build brickwork and blockwork of all shapes and sizes. You'll learn to set walls and buildings following instructions from foremen and architects.

Carpentry and Joinery

Carpenters and joiners are required to build and install a wide range of wood products including doors, windows, floors, walls, staircases and roof trusses. There are several trade opportunities within this field. Site carpentry deals with the installation of floors, doors, windows and roofs on both domestic and commercial buildings. Bench joinery is the production of specialist items such as counters, bespoke kitchens, special windows and staircases.

There are other areas of specialisation, such as shopfitting (the installation of shopfronts and interiors) and formworking (the creation of temporary moulds for large concrete structures).

Construction

Construction is a massive industry where skilled professionals are always in demand.

As a general construction operative, you'll do a bit of everything: prepare construction sites, dig holes for foundations, concrete office blocks, install timber, mix mortar, unload and move materials.

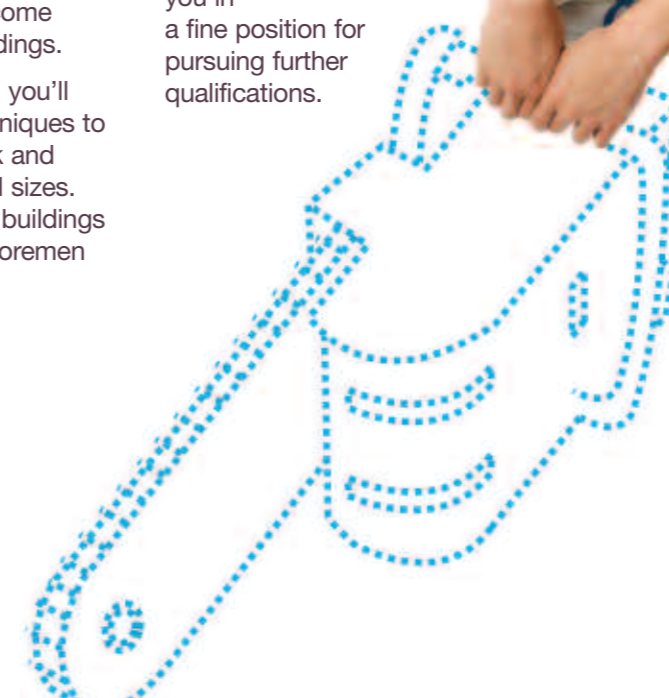
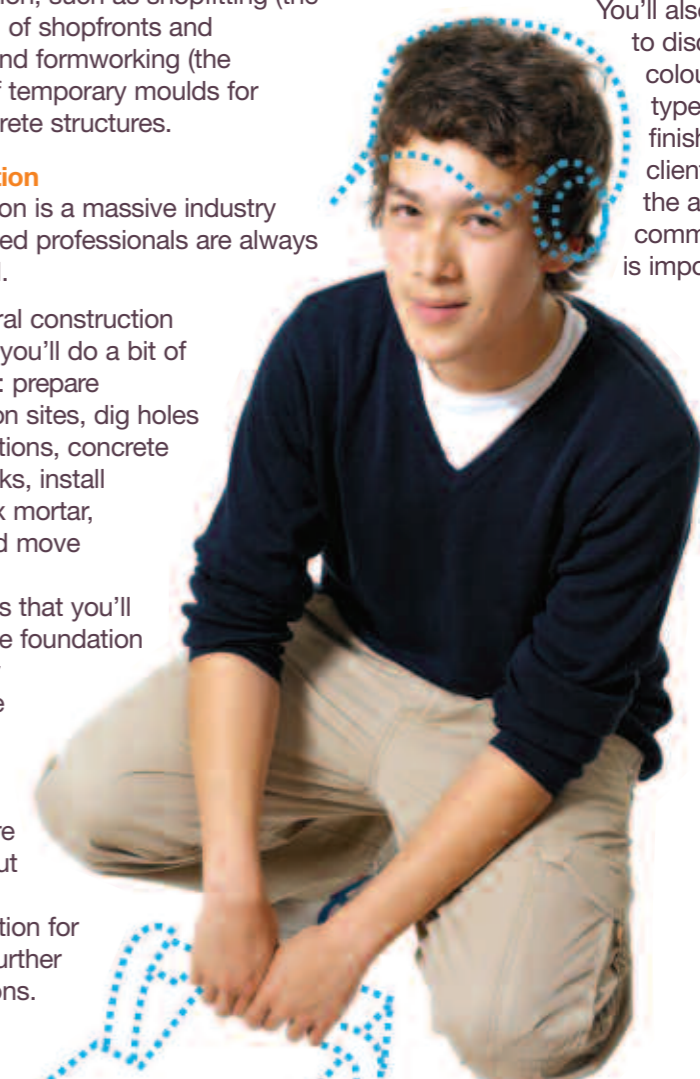
This means that you'll gain a large foundation of industry knowledge that will make employers want to hire you and put you in a fine position for pursuing further qualifications.

Painting and Decorating

Painting and decorating isn't just about decorating a room in a house. You could be painting large structures like road bridges or skillfully applying gold leaf to ornate fixtures in a stately home. This work requires a steady hand, good technique and attention to detail.

As an apprentice painter and decorator, you'll work with a variety of materials like paint, varnishes and wallpaper. You'll prepare surfaces to receive new coatings in both modern and historic buildings.

You'll also need to discuss colours and types of finish with clients, so the ability to communicate is important.





Customer Service

Apprentices will usually work at the front end of an employer's business activities and regularly assist customers. Duties will vary between sectors, but in most cases you'll be making sure that customers are dealt with in a positive, reliable and pleasant way - whether that's by offering advice, answering questions or handling complaints. To properly assist customers, you'll need clear and up-to-date knowledge of your organisation's products and services. You'll also need to be able to communicate with all sorts of people.

Retail

The retail sector is extremely broad, covering market stalls, independent shops, national chains and large superstores. Job roles are varied but the skills gained from this Apprenticeship are transferable to all retail companies.

Your role will depend on your employer, but you could be working on the sales floor of a high street store, assisting customers.

If you prefer staying behind the scenes, then you could work in stock handling, making sure products are received in the right quantities and stored correctly. Creative types could pursue visual merchandising, which deals with window and in-store displays.

Sales and Telesales

Sales people work in a variety of settings - car dealerships, call centres or even working door-to-door to promote products and services, research customer trends and demands, agree prices and get customers to sign contracts.

Ultimately, your goal will be to sell as many of your company's products and services as possible, while taking into consideration the interests of your clients. Customers are important, and you'll have to seek out new customers while still looking after the existing ones.

Customer Service and Retail

Contact Centres

The contact centres industry is one of the fastest growing in the UK, with job opportunities in most urban areas.

On this Apprenticeship you could be working in areas like sales, information retrieval, or account management. No matter where you end up, the same sets of skills will apply: you'll work the phones and computer systems; communicate and listen; solve problems; and work with a team in a fast-paced environment.

Electrical and Engineering

Building Services Engineers

Building services engineers are responsible for the design, installation and maintenance of all sorts of systems in new and existing buildings, including heating, lighting, air conditioning, refrigeration, water supply, lifts and escalators.

These systems are becoming increasingly complex, and engineers must balance the need for a comfortable indoor environment with other issues like safety and energy efficiency.

Their duties can include discussions with clients and architects; preparing designs on computers; estimating costs; supervising installation; and maintenance and repair.

Electrical and Electronic Servicing

Electrical and electronic service engineers specialise in servicing and repairing electrical equipment - from TVs and domestic appliances, to aerial systems in blocks of flats.

Apprentices choose one of three areas of specialisation: signal reception (aerial systems); consumer/commercial electronics (TVs, audio systems and DVD players); or domestic electrical appliances (washing machines, microwaves and refrigerators). Whichever you choose, you'll cover installation, servicing and maintenance procedures.

Electrotechnical

The electrotechnical industry involves the installation, maintenance and repair of electrotechnical equipment - from installing electrical systems inside a new building to maintaining machinery on a production line.

Apprentices specialise in one of four areas: panel building (building control panels for lighting, heating, air conditioning and ventilation systems); motor repair and rewind (finding and fixing faults in machinery); instrumentation (installing and maintaining manufacturing systems); or maintenance (testing and servicing of electromechanical equipment).

Engineering

(including Maintenance)
This diverse field can be divided into seven sub-categories: aerospace, automotive, metals, electrical equipment, electronics, marine maintenance, and mechanical engineering. This Apprenticeship covers a range of NVQs in these sub-sectors.

Engineering apprentices will learn to take on roles in specific areas, which could be anything from assembling car engines to installing telecommunications systems. Most duties will involve the maintenance of equipment and machinery.

Heating, Ventilating, Air Conditioning and Refrigeration

The heating, ventilating, air conditioning and refrigeration industry helps maintain airflow and heat in all sorts of buildings.

This Apprenticeship has several available pathways. Heating and ventilating fitters install and repair heating and ventilating systems. Heating and ventilating welders have the specialist skills to join pipework systems, and ductwork installers install the ventilation systems that either provide clean air to, or extract air from, parts of buildings.

Refrigeration and air conditioning technicians install, service and repair temperature and air quality control systems. Service and maintenance engineers service systems and fix any problems.

Manufacturing

With this Apprenticeship, you will develop skills in a range of activities, including cutting, shaping, building assemblies and processing products. Skills involved could include forming/moulding, finishing and joining, and can relate to products as diverse as footwear and cosmetics.

Mechanical Engineering Services: Plumbing

The plumbing industry is a key part of the UK's construction industry. It's a highly competitive field that employs skilled craftspeople and technicians who work with a wide range of materials and technologies. Plumbers must be familiar with everything from domestic boilers to advanced welding techniques.

From installing sanitation systems and servicing boilers to laying underground drainage pipes, plumbers work for the construction industry as well as for commercial and domestic clients. In recent years, the industry has also been involved with developing environmentally sound technologies like solar water heating and rainwater harvesting.

Retail Motor Industry:

Vehicle Maintenance and Repair
Motor vehicle technicians service, repair and replace parts of all types of vehicles, from mopeds to lorries.

As an apprentice, you could work for a dealership and focus on a particular manufacturer, or work for an independent garage that deals with all different makes. In both, you'll choose your area of specialisation, whether that's motorcycles or vehicle electrical systems. You'll be carrying out routine maintenance and basic repairs, as well as identifying and reporting faults.

Energy/Utilities Industry

Electricity Industry

This Apprenticeship covers three main areas of the electricity industry: generation (power stations and other electricity-generating methods), transmission (the National Grid), and distribution (flowing the electricity from the transmission network).

On the generation pathway of this Apprenticeship, you learn to operate and maintain the equipment that produces electricity; repair faults on machinery; test equipment; and handle the materials used to generate electricity.

In the distribution and transmission pathways, you'd be installing and maintaining the network that supplies electricity to homes and businesses.



Gas Industry

Gas service technicians install, service and repair gas appliances in businesses and homes. They connect appliances to gas supplies and ensure that everything's safe, repairing leaks according to strict safety guidelines.

You'll learn how to install and maintain appliances, working towards CORGI (Council of Registered Gas Installers) registration - a requirement for anyone installing gas appliances. You will also cover systems design and customer service.

Water Industry

The water industry plays an important role in our well-being, the environment and the economy.

There are many pathways for this Apprenticeship. In the mainlaying pathway, you install and maintain the pipes that make up the network; as a servicelayer, you look after the pipes that connect customers to the main. You could be a plant operator, supporting the processes at the treatment plant; or a distribution technician, operating the network.

Financial Service

Accounting

You might be keeping track of one person's finances or a global corporation's, so there's a lot of variety. You could work for any type of business - record companies, major manufacturers, football clubs, charities...

Most apprentices qualify as accounts assistants, credit control clerks, accounts clerks, or finance assistants, who all help accountants to keep financial records and prepare accounts. You'll learn how to balance accounts, process invoices and payments, complete VAT returns and prepare financial reports. Depending on where you work, you could be specialising in one area - like sales - or doing all these tasks and more.

Advising on Financial Products

Independent financial advisers offer general advice, and will scour banks, building societies and other financial institutions to get the best deal for their client.

Financial advisers employed by a specific bank or building society will advise on the products and services offered by their own company.

You'll learn to advise on mortgages, insurance, or other financial matters like pensions and savings. You'll be meeting clients, staying up-to-date with the financial market, negotiating prices and putting together financial plans.

Payroll

Payroll clerks are responsible for figuring out how much employees should get paid by adding up all their overtime, deducting enough to cover tax and national insurance payments, and taking into account things like holiday, sick pay and expenses.

Once that's done, the actual payments need to be made. Most companies pay their employees on the same day, so on one day each month the payroll team must make sure that perhaps thousands of automatic bank transfers are made accurately.

Food and Drink

Food Manufacture

There are lots of different jobs in food manufacture, from quality checkers and bakers to logistics officers and butchers.

On this Apprenticeship, you could specialise in the main operations involved in manufacturing and processing all sorts of food products including brewing and bottling; dairy processing; bakery production; or meat and poultry.

Your programme will involve both on-the-job and off-the-job training which will ensure you have both theoretical and practical skills.

Hair and Beauty

Beauty Therapy (including Nail Services and Spa Therapy)

As an apprentice, you'll assist senior therapists and learn to improve facial skin conditions, wax body hair, spray tan, perform hand and foot treatments, and apply make-up. On the Advanced Apprenticeship, you'll work as a beauty therapist, learning techniques like body massage and electrolysis (permanent body hair removal).

Most therapists are based in salons, though they pop up everywhere from hospitals to cruise liners.

As an apprentice, you'll assist senior nail technicians as well as perform manicures, pedicures, hand and nail treatments, nail extensions and basic nail art techniques. As an advanced apprentice, you'll have the

opportunity to develop specialist skills in creative nail work by planning, designing and creating images for nail art. You'll also learn how to maintain and repair a range of artificial nail systems.

Spa therapists improve people's wellbeing by providing a variety of body treatments, from massages and facials to water treatments and tanning. They can also aid health and fitness by working alongside nutritionists.

This is an Advanced Apprenticeship, so you'll have to first complete a Level 2 NVQ in a related subject (like Beauty Therapy or Nail Services), or show you've got relevant experience.

Hairdressing

This Apprenticeship covers all the basics of hairdressing, plus optional units on skills like promoting products, perming, or relaxing different types of hair.

You'll be working as a salon junior, assisting senior staff while training as a junior stylist. You'll also study hairdressing issues such as hair and skin testing, the effects of chemicals on hair and skin, and the principles of hair colour selection.

Advanced Apprentices take their learning a step further by developing their cutting and colouring skills.

Hospitality and Travel

Hospitality and Catering

This industry spans restaurants, hotels, cafés, pubs, contract caterers, schools, colleges, hospitals and large businesses.

You'll choose one of seven specialisations. On the food and drink service pathway, you'll learn to serve customers, as a waiter or behind the bar. Professional cookery is for those who want to train as chefs, while food processing and cooking deals with large-scale catering for the NHS, Armed Forces, schools and so on.

More interested in the hospitality side? You could take the Front Office pathway and work in a hotel reception area; learn to run a B&B or youth hostel or keep a hotel crisp and clean.

Travel and Tourism Services

On this Apprenticeship, you could be working as a leisure or business travel consultant, maybe in a high street travel agency or a call centre. Using computer systems, you'll help customers make travel plans by checking availability and costs, making bookings and processing payments.

Customer service is crucial: you'll make sure clients are up-to-date with any changes or cancellations, and provide health, passport and visa information.

Information Technology and Communications

IT and Telecomms Professionals

Telecoms covers broadband, mobile phones and satellite communications. On the communication technology pathway of this Apprenticeship you'll learn things like customer care, system security, managing software development and basic IT applications.

IT professionals serve customers in all types of business. You'll study software installation, communication skills and technical fault diagnosis, and gain an IT qualification from a recognised group such as Microsoft or CompTIA.

Logistics

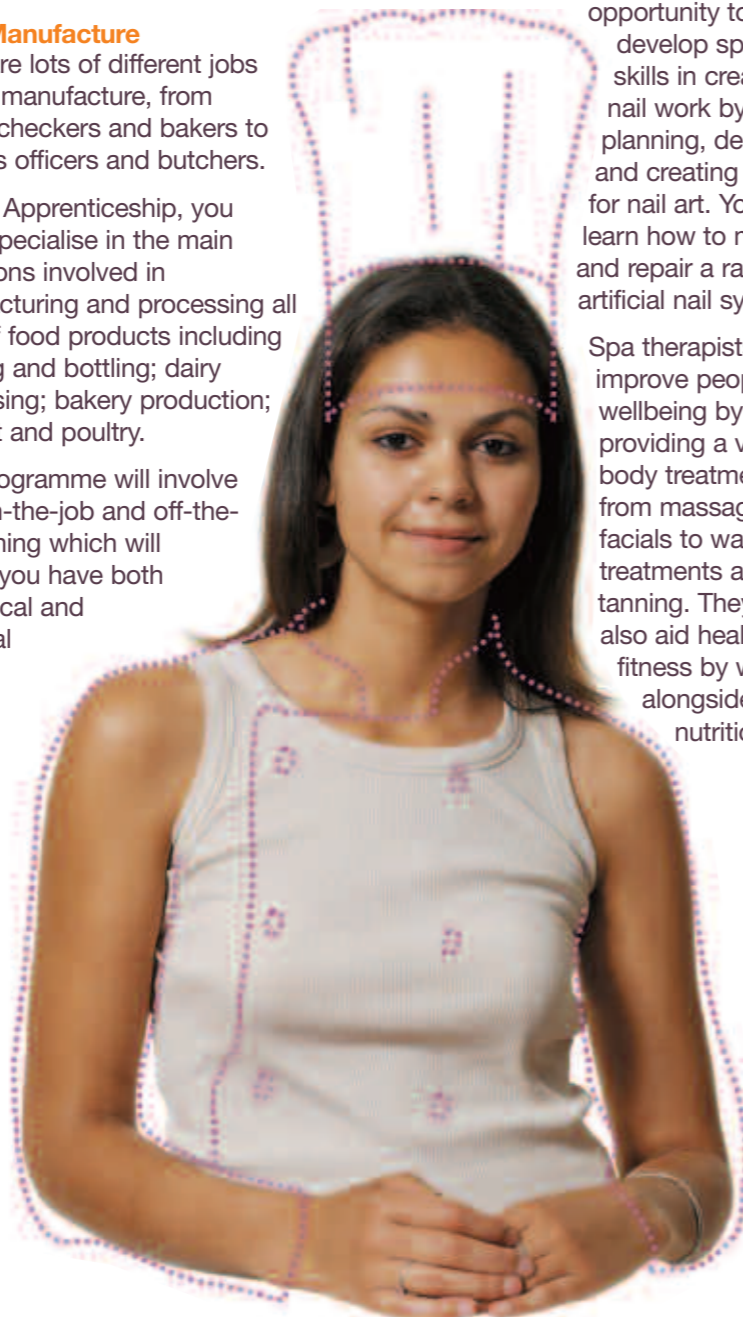
Driving Goods Vehicles

You'll be involved in transporting goods with pick-ups and multi-drop deliveries. Other duties include planning schedules and routes, supervising loading and unloading, completing paperwork and log books - and, of course, lots of driving.

There are also training opportunities for transporting goods like chemicals or hazardous materials that require specialist skills.

Traffic Office

You'll cover the planning, scheduling and routing of things transported over land. Traffic offices oversee the movement of goods and are responsible for making sure that things run smoothly - it's a job that requires serious organisation skills.



Warehousing and Storage

This Apprenticeship deals with the movement and storage of goods, and is an essential part of logistics operations. There's more to this job than just lifting and moving things around. You can get skills in operating specialist machinery to get things onto - and down from - high storage spaces; learn about keeping some goods at low temperatures; and improve your spatial awareness, so that you can quickly and efficiently load objects of different shapes and sizes.

Manufacturing and Processing

Ceramics

Ceramics make up many home items such as mugs, washbasins and toilets, lamps, water filters - even hair straighteners! Ceramic material is also found in cars, and in moulds manufacturing, everything from rubber gloves to balloons. With other important uses in hi-tech industry, ceramic manufacture is constantly experiencing its own technological advances to make the material stronger and more versatile.

You'll learn about different ceramic manufacturing processes and quality assurance. You'll also be learning customer care skills, so you know exactly how to meet a customer's needs.

Coating Operations

Though you can't always see them, coatings are everywhere: on our jackets, walls, cars and computers, to name a few places.

Generally, coatings are broken down into five categories: decorative, industrial, powder coating, printing inks and wall coverings. Depending on which pathway you choose, you could work as a production operative, responsible for operating manufacturing equipment; a quality control operative, assisting in product manufacture and customer queries; or a junior laboratory technician, helping with research and product development.

Furniture Industry

There are three main sectors: domestic, office and contract (furniture for hotels, airports and other large public areas). Some skills - like upholstery, wood machining and product design - are used across all three sectors. Depending on your Apprenticeship pathway, you could learn to produce wood ready for furniture making; install kitchens and bathrooms; or design and make different types of furniture.

Metal Industry

As an apprentice you'll gain a broad understanding of the metals industry by working both in the office and on the shop floor. You'll schedule materials, monitor production processes, work on the floor as a member of a production team, test the quality of products, and learn health and safety practices. As an advanced apprentice, you'll take part in making structural steelwork, including welding and drilling, and get the chance to act as team leader.

Print and Printed Packaging

The print process needs people with knowledge of design, inks, paper, and the printing presses themselves, as well as people to oversee the whole process, check quality, deal with customers and make sure that weekly magazines go to the newsagents on time.

Depending on which pathway you choose in your Apprenticeship, you could find yourself working on the presses; you could be learning about how to bind books or you could be in a design studio, creating images that will eventually be printed.

Signmaking

Signmakers design, make and install all sorts of signs, from those stuck on company entrances to the bands you see around football pitches.

The signmaking process can involve many diverse skills - from graphic design through to electrical engineering - and incorporate materials like vinyl, perspex, plastic, metal and glass.

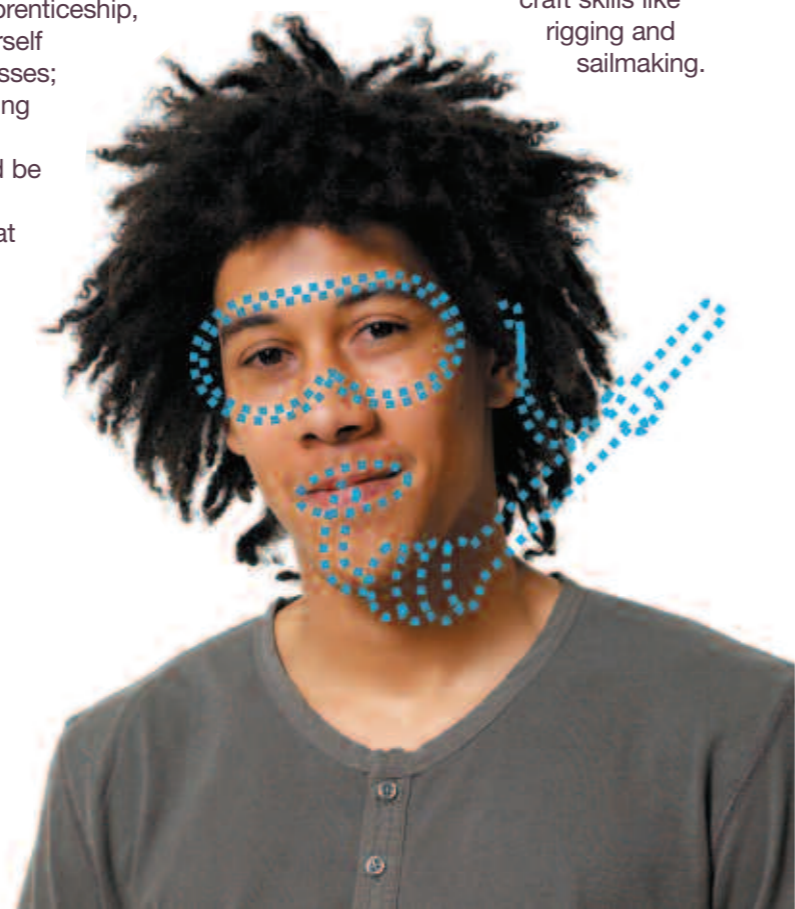
Various methods are used to produce lettering for signs, depending on the project - for example, computer-controlled routers for cutting out moulded glass fibre lettering. Screen-printing may also be used to produce posters, while traditional signwriting could involve designing by hand and painting with special brushes and enamel paint.

Marine Industry

Marine Industry

The marine industry encompasses a wide range of professions. This Apprenticeship has several pathways covering aspects of boat building, maintenance and repair; marine engineering; electrics and electronics; and maintenance.

You could learn a variety of skills and techniques such as carpentry, electrical, plumbing and welding skills as well as more traditional maritime craft skills like rigging and sailmaking.



Property

Cleaning and Support Service Industry

There's a lot more to cleaning than being handy with a mop. As well as working in offices and homes cleaning staff can sometimes work at crime and accident scenes, or for the local government cleaning graffiti from the streets.

They can also take charge of large-scale clean-ups, such as international festival sites or even disaster zones.

Property Services

Property isn't just about a few walls and a roof. There are legal issues to consider - stamp duty, leases etc - and physical issues, like the dangers of building on unsuitable ground.

You're likely to start out helping to advise people on available properties, arrange viewings, help market properties and more.

At the Advanced Apprenticeship level, you may have the choice to train as a surveyor, which is a civil engineering role.

Public Services

Childrens Care, Learning and Development

This Apprenticeship is for people who want to work with children from 0 to 16 (and their families).

The exact nature of your job role will depend on your employer, though you'll be working in a supervised setting. You could learn to keep children safe, methods of play that promote development and learning, and ways to build positive relationships with children. You could also choose to learn about working with children with special needs.

Dental Nursing

Dental nurses support dentists and the other people who look after our teeth.

They provide the essential link between dentist and patient; carrying out duties like sterilising and preparing instruments, mixing materials or carrying out non-clinical tasks like reception duties, meeting and reassuring patients and patient education.

Most dental nurses work in dental surgeries, but you could also work in a hospital, the community, a specialist dental hospital, or even in the armed forces.

Health and Social Care

Health care includes work in hospitals, the community, doctors' surgeries, pharmacies, dental services, opticians and hospices, as well as various private clinics.

You could help patients in hospital wards or their homes - serving food, making and changing beds, ensuring they're comfortable, taking someone's temperature and so on.

Social care involves helping people with a particular need, such as the disabled or elderly. It usually takes place in the home or in residential care homes. Duties could involve anything from helping clients get dressed to driving them around.

Pharmacy Assistants and Technicians

Pharmacy technicians and assistants prepare, supply and dispense medicines and products prescribed for patients under the supervision of a registered pharmacist.

Duties will vary depending on the setting, but may include selling over-the-counter medicines, collecting prescriptions, generating labels, ordering and storing pharmaceutical stock, and providing information on symptoms and products to customers.



Security Services

Opportunities in this sector include security guard operations - static and patrol, reception duties, retail security, or mobile patrol functions. You could also progress into CCTV operations, door supervision, events security, or key holding and response functions.

Sports and Fitness

Active Leisure and Learning

This Apprenticeship contains pathways that cover many aspects of sport and recreation from professional sport to exercise instruction - including work in leisure centres, gyms, swimming pools, stadiums, and private sports clubs, as well as a range of outdoor activities.

If you've got a flair for management and organisation, you could help run a leisure centre both behind the scenes and front of house.



Administration and Human Resources

Advice and Guidance

	Bedfordshire and Luton		Cambridgeshire		Essex		Hertfordshire		Norfolk		Suffolk	
	Apprenticeship	Advanced Apprenticeship	Apprenticeship	Advanced Apprenticeship	Apprenticeship	Advanced Apprenticeship	Apprenticeship	Advanced Apprenticeship	Apprenticeship	Advanced Apprenticeship	Apprenticeship	Advanced Apprenticeship
APEX (Harlow College)					•							
Great Yarmouth College					•	•						
Lifeskills Solutions					•	•						
Oaklands College							•					

Business Administration

	Bedfordshire and Luton		Cambridgeshire		Essex		Hertfordshire		Norfolk		Suffolk	
	Apprenticeship	Advanced Apprenticeship	Apprenticeship	Advanced Apprenticeship	Apprenticeship	Advanced Apprenticeship	Apprenticeship	Advanced Apprenticeship	Apprenticeship	Advanced Apprenticeship	Apprenticeship	Advanced Apprenticeship
A4e Skills	•	•					•	•				
APEX (Harlow College)					•	•						
Badgehurst Training Limited					•	•						
Barnfield College		•										
BCT Consortium					•	•						
Bedford College	•	•										
Bedford Training Group Ltd	•	•										
Boston College			•	•								
Broadland Council Training Services									•	•	•	•
Cambridge Regional College			•	•								
Central Training Group					•	•						
City College Norwich									•	•		
Crown College					•	•						
Dunstable College (Chiltern Business Training)	•	•										
Eclipse Training Ltd	•	•										
Eden Training					•	•						
Great Yarmouth College									•	•	•	•
Hertford Regional College							•	•				
HSBC Bank PLC							•					
Huntingdonshire Regional College	•	•	•	•			•	•				
Inspire Training											•	•
Intraining CBE	•	•	•	•	•	•	•	•	•	•	•	•
ITEC					•							
ITS Training Services	•	•	•	•	•	•	•	•	•	•	•	•
JHP Training Ltd	•	•	•	•	•	•	•	•			•	•
Lifeskills Solutions					•	•						
Lowestoft College										•	•	•
Management and Personnel Services Ltd	•	•	•	•	•	•	•	•				
Mymar Training Ltd	•	•	•	•	•	•	•	•	•	•	•	•
Norfolk Training Services Ltd									•	•		
North Hertfordshire College	•	•	•	•	•	•	•	•				
Oaklands College							•	•				
Otley College					•	•			•	•	•	•
Paston College									•	•		
Peterborough College of Adult Education			•	•								
Peterborough Regional College			•	•								
Poultec Training Limited	•	•	•	•	•	•	•	•	•	•	•	•
Protocol Skills	•	•	•	•	•	•	•	•	•	•	•	•
SEETEC Business Technology Ltd					•	•						
Suffolk New College											•	•
TBG Learning					•	•					•	•
The Chamber	•	•										
The College of West Anglia			•	•					•	•		
Thurrock and Basildon College					•	•						
UK Training and Development							•	•				
VT Training	•	•	•	•	•	•	•	•	•	•	•	•
West Anglia Training Association	•	•	•	•	•	•	•	•	•	•	•	•
West Suffolk College			•	•					•	•	•	•
WS Training			•	•					•	•	•	•
YMCA Training			•	•					•	•	•	•

Learning and Development/
Direct Training and Support

	Bedfordshire and Luton		Cambridgeshire		Essex		Hertfordshire		Norfolk		Suffolk	
	Apprenticeship	Advanced Apprenticeship	Apprenticeship	Advanced Apprenticeship	Apprenticeship	Advanced Apprenticeship	Apprenticeship	Advanced Apprenticeship	Apprenticeship	Advanced Apprenticeship	Apprenticeship	Advanced Apprenticeship
Management and Personnel Services Ltd	•	•	•	•	•	•	•	•				

Management

	Bedfordshire and Luton		Cambridgeshire		Essex		Hertfordshire		Norfolk		Suffolk	
	Apprenticeship	Advanced Apprenticeship	Apprenticeship	Advanced Apprenticeship	Apprenticeship	Advanced Apprenticeship	Apprenticeship	Advanced Apprenticeship	Apprenticeship	Advanced Apprenticeship	Apprenticeship	Advanced Apprenticeship
Anne Clarke Associates Ltd	•	•	•	•	•	•	•	•	•	•	•	•
APEX (Harlow College)					•	•						
BCT Consortium					•	•						
Boston College			•	•								
Central Training Group					•	•						
Huntingdonshire Regional College	•	•	•	•			•	•				
Intraining CBE		•		•						•		•
ITS Training Services	•	•	•	•	•	•	•	•	•	•	•	•
JHP Training Ltd	•	•	•	•	•	•	•	•	•	•	•	•
KEITS	•	•	•	•	•	•	•	•	•	•	•	•
Lifeskills Solutions					•	•						
Management and Personnel Services Ltd	•	•	•	•	•	•	•	•				
Mymar Training Ltd	•	•	•	•	•	•	•	•	•	•	•	•
Norfolk Training Services Ltd									•	•		
North Hertfordshire College	•	•	•	•	•	•	•	•				
Oaklands College							•					
Otley College					•	•			•	•	•	•
Paston College									•	•		
Poultec Training Ltd	•	•	•	•	•	•	•	•	•	•	•	•
Protocol Skills	•	•	•	•	•	•	•	•	•	•	•	•
TBG Learning					•	•					•	•
The Chamber	•											
UK Training and Development							•	•				
VT Training	•	•	•	•	•	•	•	•	•	•	•	•
West Anglia Training Association	•	•	•	•	•	•	•	•	•	•	•	•
WS Training			•	•					•	•	•	•

Agriculture and Land Based Services

Agriculture, Crops and Landscape

	Bedfordshire and Luton		Cambridgeshire		Essex		Hertfordshire		Norfolk		Suffolk	
	Apprenticeship	Advanced Apprenticeship	Apprenticeship	Advanced Apprenticeship	Apprenticeship	Advanced Apprenticeship	Apprenticeship	Advanced Apprenticeship	Apprenticeship	Advanced Apprenticeship	Apprenticeship	Advanced Apprenticeship
Easton College			•	•	•	•			•	•	•	•
Otley College					•	•			•	•	•	•
Poultec Training Ltd	•	•	•	•	•	•	•	•	•	•	•	•
The College of West Anglia			•	•								

Amenity Horticulture

	Bedfordshire and Luton		Cambridgeshire		Essex		Hertfordshire		Norfolk		Suffolk	
	Apprenticeship	Advanced Apprenticeship	Apprenticeship	Advanced Apprenticeship	Apprenticeship	Advanced Apprenticeship	Apprenticeship	Advanced Apprenticeship	Apprenticeship	Advanced Apprenticeship	Apprenticeship	Advanced Apprenticeship
Badgehurst Training Ltd					•							
Easton College			•	•	•	•			•	•	•	•
KEITS	•	•	•	•	•	•	•	•	•	•	•	•
Oaklands College							•					
Otley College					•	•			•	•	•	•
Ridgemon Training	•						•	•				
The College of West Anglia			•	•								

Animal Care

	Bedfordshire and Luton		Cambridgeshire		Essex		Hertfordshire		Norfolk		Suffolk	
	Apprenticeship	Advanced Apprenticeship	Apprenticeship	Advanced Apprenticeship	Apprenticeship	Advanced Apprenticeship	Apprenticeship	Advanced Apprenticeship	Apprenticeship	Advanced Apprenticeship	Apprenticeship	Advanced Apprenticeship
APEX (Harlow College)					•	•						
Badgehurst Training Ltd					•							
Easton College			•	•	•	•			•	•	•	•
KEITS	•	•	•	•	•	•	•	•	•	•	•	•
Otley College					•	•			•	•	•	•
The College of Animal Welfare	•	•	•	•	•	•	•	•	•	•	•	•
The College of West Anglia			•	•								

Environmental Conservation

	Bedfordshire and Luton		Cambridgeshire		Essex		Hertfordshire		Norfolk		Suffolk	
	Apprenticeship	Advanced Apprenticeship	Apprenticeship	Advanced Apprenticeship	Apprenticeship	Advanced Apprenticeship	Apprenticeship	Advanced Apprenticeship	Apprenticeship	Advanced Apprenticeship	Apprenticeship	Advanced Apprenticeship
Easton College			•	•	•	•			•	•	•	•
Oaklands College							•					



Equine

	Bedfordshire and Luton		Cambridgeshire		Essex		Hertfordshire		Norfolk		Suffolk	
	Apprenticeship	Advanced Apprenticeship	Apprenticeship	Advanced Apprenticeship	Apprenticeship	Advanced Apprenticeship	Apprenticeship	Advanced Apprenticeship	Apprenticeship	Advanced Apprenticeship	Apprenticeship	Advanced Apprenticeship
APEX (Harlow College)					•	•						
Badgehurst Training Ltd					•	•						
Broadland Council Training Services									•	•	•	•
Easton College			•	•	•	•			•	•	•	•
KEITS	•	•	•	•	•	•	•	•	•	•	•	•
Oaklands College							•					
Otley College					•	•			•	•	•	•
The British Racing School	•	•	•	•	•	•	•	•	•	•	•	•

Floristry

	Bedfordshire and Luton		Cambridgeshire		Essex		Hertfordshire		Norfolk		Suffolk	
	Apprenticeship	Advanced Apprenticeship	Apprenticeship	Advanced Apprenticeship	Apprenticeship	Advanced Apprenticeship	Apprenticeship	Advanced Apprenticeship	Apprenticeship	Advanced Apprenticeship	Apprenticeship	Advanced Apprenticeship
Badgehurst Training Ltd					•	•						
Easton College			•	•	•	•			•	•	•	•
Great Yarmouth College									•	•	•	•
KEITS	•	•	•	•	•	•	•	•	•	•	•	•
Otley College					•	•			•	•	•	•
The College of West Anglia			•	•								

Land-Based Service Engineering

	Bedfordshire and Luton		Cambridgeshire		Essex		Hertfordshire		Norfolk		Suffolk	
	Apprenticeship	Advanced Apprenticeship	Apprenticeship	Advanced Apprenticeship	Apprenticeship	Advanced Apprenticeship	Apprenticeship	Advanced Apprenticeship	Apprenticeship	Advanced Apprenticeship	Apprenticeship	Advanced Apprenticeship
APEX (Harlow College)					•	•						
Easton College			•	•	•	•			•	•	•	•
Honda Apprenticeship Programme	•	•	•	•	•	•	•	•	•	•	•	•
Huntingdonshire Regional College	•	•	•	•			•	•				
Otley College					•	•			•	•	•	•

Production Horticulture

	Bedfordshire and Luton		Cambridgeshire		Essex		Hertfordshire		Norfolk		Suffolk	
	Apprenticeship	Advanced Apprenticeship	Apprenticeship	Advanced Apprenticeship	Apprenticeship	Advanced Apprenticeship	Apprenticeship	Advanced Apprenticeship	Apprenticeship	Advanced Apprenticeship	Apprenticeship	Advanced Apprenticeship
KEITS	•	•	•	•	•	•	•	•	•	•	•	•
Otley College					•	•			•	•	•	•
The College of West Anglia			•	•								

Veterinary Nursing

	Bedfordshire and Luton		Cambridgeshire		Essex		Hertfordshire		Norfolk		Suffolk	
	Apprenticeship	Advanced Apprenticeship	Apprenticeship	Advanced Apprenticeship	Apprenticeship	Advanced Apprenticeship	Apprenticeship	Advanced Apprenticeship	Apprenticeship	Advanced Apprenticeship	Apprenticeship	Advanced Apprenticeship
APEX (Harlow College)					•	•						
Badgehurst Training Ltd					•	•						
Easton College			•	•	•	•			•	•	•	•
Medivet/Pet Health Education			•	•	•	•	•	•				
The College of Animal Welfare	•	•	•	•	•	•	•	•	•	•	•	•
The College of West Anglia			•	•								

Arts, Creative and Cultural Industries

Creative Apprenticeship

	Bedfordshire and Luton		Cambridgeshire		Essex		Hertfordshire		Norfolk		Suffolk	
	Apprenticeship	Advanced Apprenticeship	Apprenticeship	Advanced Apprenticeship	Apprenticeship	Advanced Apprenticeship	Apprenticeship	Advanced Apprenticeship	Apprenticeship	Advanced Apprenticeship	Apprenticeship	Advanced Apprenticeship
North Hertfordshire College	•	•	•	•	•	•	•	•	•			
Oaklands College							•					



Automotive Industry and Passenger Transport

Aviation

	Bedfordshire and Luton		Cambridgeshire		Essex		Hertfordshire		Norfolk		Suffolk	
	Apprenticeship	Advanced Apprenticeship	Apprenticeship	Advanced Apprenticeship	Apprenticeship	Advanced Apprenticeship	Apprenticeship	Advanced Apprenticeship	Apprenticeship	Advanced Apprenticeship	Apprenticeship	Advanced Apprenticeship
North Hertfordshire College	•	•	•	•	•	•	•	•				

Rail Transport Operations

	Bedfordshire and Luton		Cambridgeshire		Essex		Hertfordshire		Norfolk		Suffolk	
	Apprenticeship	Advanced Apprenticeship	Apprenticeship	Advanced Apprenticeship	Apprenticeship	Advanced Apprenticeship	Apprenticeship	Advanced Apprenticeship	Apprenticeship	Advanced Apprenticeship	Apprenticeship	Advanced Apprenticeship
North Hertfordshire College	•	•	•	•	•	•	•	•				

Retail Motor Industry - Vehicle Maintenance and Repair, Body and Paint Operations

	Bedfordshire and Luton		Cambridgeshire		Essex		Hertfordshire		Norfolk		Suffolk	
	Apprenticeship	Advanced Apprenticeship	Apprenticeship	Advanced Apprenticeship	Apprenticeship	Advanced Apprenticeship	Apprenticeship	Advanced Apprenticeship	Apprenticeship	Advanced Apprenticeship	Apprenticeship	Advanced Apprenticeship
APEX (Harlow College)					•	•						
Barnfield College	•	•										
BCT Consortium					•	•						
Bedford College	•	•										
Bedford Training Group Ltd	•	•										
Cambridge Regional College			•									
Citröen UK Ltd	•											
Ford Motor Company Ltd					•	•						
Great Yarmouth College									•	•	•	•
Hertford Regional College							•	•				
Honda Apprenticeship Programme	•	•	•	•	•	•	•	•	•	•	•	•
Huntingdonshire Regional College	•	•	•	•			•	•				
Jaguar/Land Rover/Volvo Apprenticeships	•	•	•	•	•	•	•	•	•	•	•	•
Lowestoft College									•	•	•	•
Management and Personnel Services Ltd	•	•										
Norfolk Training Services Ltd									•	•		
North Hertfordshire College	•	•	•	•	•	•	•	•				
Otley College					•	•			•	•	•	•
Peterborough College of Adult Education			•	•								
Peterborough Regional College			•	•								
Renault UK Ltd	•	•	•	•	•	•	•	•	•	•	•	•
Skillnet Ltd	•	•	•	•	•	•	•	•	•	•	•	•
Suffolk New College											•	•
The College of North West London							•	•				
The College of West Anglia			•						•	•		
Thurrock and Basildon College					•	•						
Toyota Lexus Academy	•	•	•	•	•	•	•	•	•	•	•	•
West Herts College							•	•				
West Suffolk College			•	•					•	•	•	•

Chemical, Oil and Nuclear Industry

Chemical, Pharmaceutical, Petrochemical Manufacturing and Refining Industries

	Bedfordshire and Luton		Cambridgeshire		Essex		Hertfordshire		Norfolk		Suffolk	
	Apprenticeship	Advanced Apprenticeship	Apprenticeship	Advanced Apprenticeship	Apprenticeship	Advanced Apprenticeship	Apprenticeship	Advanced Apprenticeship	Apprenticeship	Advanced Apprenticeship	Apprenticeship	Advanced Apprenticeship
Management and Personnel Services Ltd	•	•	•	•	•	•	•	•				

Construction

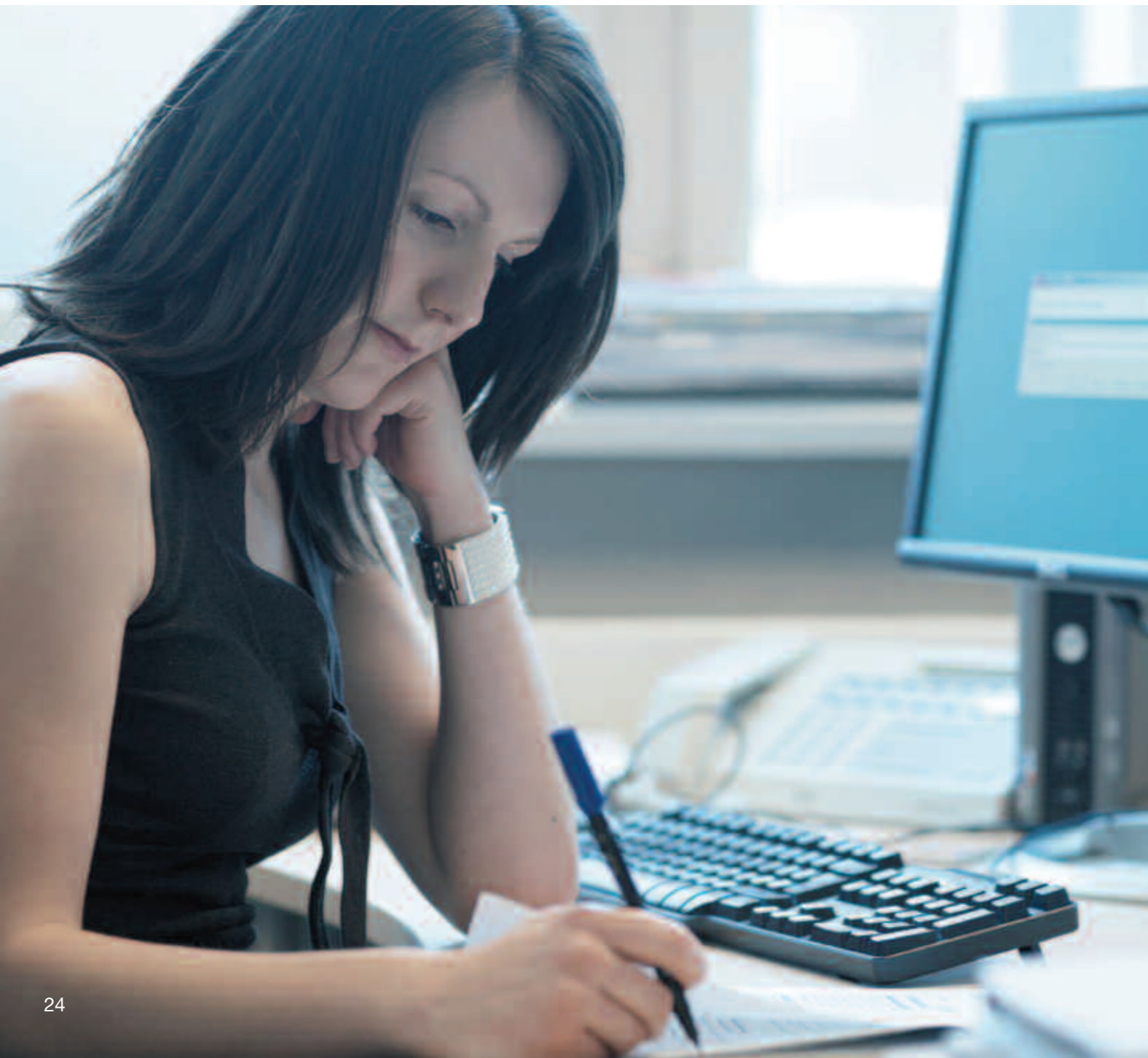
Construction (Craft) including Carpentry, Painting and Decorating and Bricklaying

	Bedfordshire and Luton		Cambridgeshire		Essex		Hertfordshire		Norfolk		Suffolk	
	Apprenticeship	Advanced Apprenticeship	Apprenticeship	Advanced Apprenticeship	Apprenticeship	Advanced Apprenticeship	Apprenticeship	Advanced Apprenticeship	Apprenticeship	Advanced Apprenticeship	Apprenticeship	Advanced Apprenticeship
APEX (Harlow College)					•	•						
Barnfield College	•	•										
BCT Consortium					•	•						
Bedford College	•	•										
Bedford Training Group Ltd	•	•										
Cambridge Regional College			•	•								
City College Norwich									•	•		
Construction Skills	•	•	•	•	•	•	•	•	•	•	•	•
Dunstable College (Chiltern Business Training)	•	•										
Great Yarmouth College									•	•	•	•
Hertford Regional College							•	•				
Huntingdonshire Regional College	•	•	•	•			•	•				
Lowestoft College									•	•	•	•
Norfolk Training Services Ltd									•	•		
North Hertfordshire College	•	•	•	•	•	•	•	•				
Oaklands College							•	•				
Otley College					•	•			•	•	•	•
Peterborough Regional College			•	•								
Prospects College					•	•						
Ridgmond Training	•	•					•	•				
Suffolk New College											•	•
The College of North West London							•	•				
The College of West Anglia			•	•					•	•		
Thurrock and Basildon College					•	•						
West Suffolk College			•	•					•	•	•	•

Customer Service and Retail

Contact Centres

	Bedfordshire and Luton		Cambridgeshire		Essex		Hertfordshire		Norfolk		Suffolk	
	Apprenticeship	Advanced Apprenticeship	Apprenticeship	Advanced Apprenticeship	Apprenticeship	Advanced Apprenticeship	Apprenticeship	Advanced Apprenticeship	Apprenticeship	Advanced Apprenticeship	Apprenticeship	Advanced Apprenticeship
APEX (Harlow College)					•	•						
Cambridge Regional College				•								
Central Training Group					•	•						
Huntingdonshire Regional College	•	•	•	•			•	•				
Intraining CBE	•						•					
Lifeskills Solutions				•	•							
Paston College									•	•		
Poultec Training Ltd	•	•	•	•	•	•	•	•	•	•	•	•
SEETEC Business Technology Ltd					•	•						
VT Training	•		•		•		•		•		•	



Customer Service

	Bedfordshire and Luton		Cambridgeshire		Essex		Hertfordshire		Norfolk		Suffolk	
	Apprenticeship	Advanced Apprenticeship	Apprenticeship	Advanced Apprenticeship	Apprenticeship	Advanced Apprenticeship	Apprenticeship	Advanced Apprenticeship	Apprenticeship	Advanced Apprenticeship	Apprenticeship	Advanced Apprenticeship
A4e Skills	•	•					•	•				
Badgehurst Training Ltd					•	•						
BCT Consortium						•						
Bedford Training Group Ltd	•	•										
Boston College			•	•								
Broadland Council Training Services									•	•	•	•
Cambridge Regional College			•	•								
Central Training Group					•	•						
Crown College					•	•						
Dunstable College (Chiltern Business Training)	•	•										
Eclipse Training Ltd	•	•										
Eden Training					•	•						
Great Yarmouth College									•	•	•	•
Hertford Regional College							•	•				
Huntingdonshire Regional College	•	•	•	•			•	•				
Inspire Training											•	•
Intraining CBE	•	•	•	•	•	•	•	•	•	•	•	•
ITEC					•							
ITS Training Services	•	•	•	•	•	•	•	•	•	•	•	•
Jaguar/Land Rover/Volvo Apprenticeships	•	•	•	•	•	•	•	•	•	•	•	•
JHP Training Ltd			•	•			•	•			•	•
Lifeskills Solutions				•	•							
Lowestoft College									•	•	•	•
Management and Personnel Services Ltd	•	•	•	•	•	•	•	•	•	•	•	•
Mymar Training Ltd	•	•	•	•	•	•	•	•	•	•	•	•
Norfolk Training Services Ltd									•	•		
North Hertfordshire College	•	•	•	•	•	•	•	•				
Norwich Union Insurance									•	•		
Oaklands College							•	•				
Otley College					•	•			•	•	•	•
Paston College									•	•		
Peterborough College of Adult Education			•	•								
Peterborough Regional College			•	•								
Poultec Training Ltd	•	•	•	•	•	•	•	•	•	•	•	•
Protocol Skills	•	•	•	•	•	•	•	•	•	•	•	•
Suffolk New College											•	•
TBG Learning											•	•
The Chamber	•	•										
The College of Animal Welfare	•	•	•	•	•	•	•	•	•	•	•	•
The College of West Anglia			•	•					•	•		
Thurrock and Basildon College					•	•						
UK Training and Development							•	•				
VT Training	•	•	•	•	•	•	•	•	•	•	•	•
West Anglia Training Association	•	•	•	•	•	•	•	•	•	•	•	•
West Herts College							•					
West Suffolk College			•	•					•	•	•	•
Whitbread Group PLC	•	•	•	•	•	•	•	•	•	•	•	•
WS Training			•	•					•	•	•	•
YMCA Training									•	•	•	•

Retail

	Bedfordshire and Luton		Cambridgeshire		Essex		Hertfordshire		Norfolk		Suffolk	
	Apprenticeship	Advanced Apprenticeship	Apprenticeship	Advanced Apprenticeship	Apprenticeship	Advanced Apprenticeship	Apprenticeship	Advanced Apprenticeship	Apprenticeship	Advanced Apprenticeship	Apprenticeship	Advanced Apprenticeship
A4e Skills	•	•					•	•				
BCT Consortium					•							
Bedford Training Group Ltd	•	•										
Boston College			•	•								
Broadland Council Training Services									•	•	•	•
Cambridge Regional College			•	•								
Central Training Group					•	•						
Crown College					•	•						
Dollond and Aitchison	•	•	•	•	•	•	•	•	•	•	•	•
Dunstable College (Chiltern Business Training)	•	•										
East of England Co-operative Society					•	•			•	•	•	•
Great Yarmouth College									•	•	•	•
Hertford Regional College							•	•				
Huntingdonshire Regional College	•	•	•	•			•	•				
Inspire Training											•	•
Intraining CBE	•	•	•	•	•	•	•	•	•	•	•	•
JHP Training Ltd	•	•	•	•	•	•	•	•			•	•
Lifeskills Solutions				•	•							
Lowestoft College									•	•	•	•
Nacro											•	
Norfolk Training Services Ltd									•	•		
Oaklands College							•	•				
Otley College					•	•			•	•	•	•
Paston College									•	•		
Peterborough Regional College			•	•								
Poultec Training Ltd	•	•	•	•	•	•	•	•	•	•	•	•
Protocol Skills	•	•	•	•	•	•		•	•	•	•	•
TBG Learning					•	•					•	•
The College of North West London							•					
The College of West Anglia			•	•					•	•		
Thurrock and Basildon College					•	•			•	•		
VT Training	•	•	•	•	•	•	•	•	•	•	•	•
West Suffolk College			•	•					•	•	•	•
WS Training				•					•	•		
YMCA Training									•	•	•	•

Sales and Telesales

	Bedfordshire and Luton		Cambridgeshire		Essex		Hertfordshire		Norfolk		Suffolk	
	Apprenticeship	Advanced Apprenticeship	Apprenticeship	Advanced Apprenticeship	Apprenticeship	Advanced Apprenticeship	Apprenticeship	Advanced Apprenticeship	Apprenticeship	Advanced Apprenticeship	Apprenticeship	Advanced Apprenticeship
Central Training Group					•	•						
Intraining CBE	•		•		•		•		•			
Lifeskills Solutions				•	•							
WS Training			•	•					•	•	•	•

Electrical and Engineering

Building Services Engineers

	Bedfordshire and Luton		Cambridgeshire		Essex		Hertfordshire		Norfolk		Suffolk	
	Apprenticeship	Advanced Apprenticeship	Apprenticeship	Advanced Apprenticeship	Apprenticeship	Advanced Apprenticeship	Apprenticeship	Advanced Apprenticeship	Apprenticeship	Advanced Apprenticeship	Apprenticeship	Advanced Apprenticeship
Management and Personnel Services Ltd	•	•	•	•	•	•	•	•				
The College of North West London							•	•				
Vogal Training				•								

Electrical and Electronic Servicing

	Bedfordshire and Luton		Cambridgeshire		Essex		Hertfordshire		Norfolk		Suffolk	
	Apprenticeship	Advanced Apprenticeship	Apprenticeship	Advanced Apprenticeship	Apprenticeship	Advanced Apprenticeship	Apprenticeship	Advanced Apprenticeship	Apprenticeship	Advanced Apprenticeship	Apprenticeship	Advanced Apprenticeship
Bedford Training Group Ltd	•	•										
BCT Consortium					•	•						
Cambridge Regional College				•								
Dunstable College (Chiltern Business Training)	•	•										
EAGIT Ltd									•	•	•	•
Great Yarmouth College									•	•	•	•
Huntingdonshire Regional College	•	•	•	•			•	•				
Management and Personnel Services Ltd	•	•	•	•	•	•	•	•				
Prospects College					•	•						
Suffolk New College											•	•
Thames Water		•				•		•				
Thurrock and Basildon College						•						
West Anglia Training Association		•		•		•		•		•		•
West Suffolk College			•	•					•	•	•	•
WS Training			•	•					•	•	•	•





Engineering including Maintenance

	Bedfordshire and Luton		Cambridgeshire		Essex		Hertfordshire		Norfolk		Suffolk	
	Apprenticeship	Advanced Apprenticeship	Apprenticeship	Advanced Apprenticeship	Apprenticeship	Advanced Apprenticeship	Apprenticeship	Advanced Apprenticeship	Apprenticeship	Advanced Apprenticeship	Apprenticeship	Advanced Apprenticeship
APEX (Harlow College)					•	•						
BAM Nuttal Ltd		•		•		•		•				
Barnfield College	•	•										
BCT Consortium					•	•						
Bedford College	•	•										
Bedford Training Group Ltd	•	•										
Cambridge Regional College			•									
Dunstable College (Chiltern Business Training)	•	•										
EAGIT Ltd									•	•	•	•
Great Yarmouth College									•	•	•	•
Huntingdonshire Regional College	•	•	•	•			•	•				
Lowestoft College									•	•	•	•
Management and Personnel Services Ltd	•	•	•	•	•	•	•	•				
Norfolk Training Services									•	•		
Oaklands College							•	•				
Otley College							•	•		•	•	•
Peterborough Regional College				•								
Prospects College							•	•				
RAC Auto Windscreens	•	•	•	•	•	•	•	•	•	•	•	•
Suffolk New College											•	•
Thames Water		•						•				
The College of North West London							•	•				
The College of West Anglia			•	•					•	•		
Thurrock and Basildon College									•			
Vogal Training												
West Anglia Training Association		•		•				•		•		•
West Suffolk College				•					•	•	•	•
WS Training				•					•	•	•	•

Electrotechnical

	Bedfordshire and Luton		Cambridgeshire		Essex		Hertfordshire		Norfolk		Suffolk	
	Apprenticeship	Advanced Apprenticeship	Apprenticeship	Advanced Apprenticeship	Apprenticeship	Advanced Apprenticeship	Apprenticeship	Advanced Apprenticeship	Apprenticeship	Advanced Apprenticeship	Apprenticeship	Advanced Apprenticeship
APEX (Harlow College)					•							
Barnfield College		•										
BCT Consortium						•						
Bedford College	•	•										
Bedford Training Group Ltd	•	•										
Cambridge Regional College				•								
City College Norwich										•		
Dunstable College (Chiltern Business Training)	•	•										
EAGIT Ltd										•	•	•
Great Yarmouth College											•	•
Hertford Regional College							•					
Huntingdonshire Regional College			•	•								
Lowestoft College									•	•	•	•
Management and Personnel Services Ltd	•	•	•	•	•	•	•	•				
North Hertfordshire College	•	•	•	•	•	•	•	•				
Peterborough Regional College			•	•								
Prospects College					•	•						
Suffolk New College											•	•
The College of West Anglia			•	•					•	•		
Vogal Training				•								
West Anglia Training Association		•		•		•			•			•
West Herts College							•					
West Suffolk College				•					•			•



Heating, Ventilating, Air Conditioning and Refrigeration

	Bedfordshire and Luton		Cambridgeshire		Essex		Hertfordshire		Norfolk		Suffolk	
	Apprenticeship	Advanced Apprenticeship	Apprenticeship	Advanced Apprenticeship	Apprenticeship	Advanced Apprenticeship	Apprenticeship	Advanced Apprenticeship	Apprenticeship	Advanced Apprenticeship	Apprenticeship	Advanced Apprenticeship
Cambridge Regional College			•	•								
Huntingdonshire Regional College	•	•	•	•			•	•				
Management and Personnel Services Ltd	•	•	•	•	•	•	•	•				
Otley College					•	•					•	•
Peterborough College of Adult Education			•									
The College of North West London							•					

Manufacturing

	Bedfordshire and Luton		Cambridgeshire		Essex		Hertfordshire		Norfolk		Suffolk	
	Apprenticeship	Advanced Apprenticeship	Apprenticeship	Advanced Apprenticeship	Apprenticeship	Advanced Apprenticeship	Apprenticeship	Advanced Apprenticeship	Apprenticeship	Advanced Apprenticeship	Apprenticeship	Advanced Apprenticeship
APEX (Harlow College)					•	•						
BCT Consortium					•	•						
Bedford Training Group Ltd	•	•										
Cambridge Regional College			•	•								
Dunstable College (Chiltern Business Training)	•	•										
EAGIT Ltd									•	•	•	•
Great Yarmouth College									•	•	•	•
Huntingdonshire Regional College			•	•								
Lowestoft College									•	•	•	•
Management and Personnel Services Ltd	•	•	•	•	•	•	•	•				
Norfolk Training Services Ltd									•	•		
Peterborough Regional College			•	•								
Prospects College					•	•						
Vogal Training			•									
West Anglia Training Association		•	•	•	•	•	•	•	•	•	•	•
West Suffolk College			•	•					•	•	•	•
WS Training			•	•					•	•	•	•

Mechanical Engineering Services: Plumbing

	Bedfordshire and Luton		Cambridgeshire		Essex		Hertfordshire		Norfolk		Suffolk	
	Apprenticeship	Advanced Apprenticeship	Apprenticeship	Advanced Apprenticeship	Apprenticeship	Advanced Apprenticeship	Apprenticeship	Advanced Apprenticeship	Apprenticeship	Advanced Apprenticeship	Apprenticeship	Advanced Apprenticeship
APEX (Harlow College)					•	•						
Barnfield College	•	•										
BCT Consortium					•	•						
Bedford College	•	•										
Bedford Training Group Ltd	•	•										
Cambridge Regional College			•	•								
City College Norwich									•	•		
Dunstable College (Chiltern Business Training)	•											
Great Yarmouth College									•	•	•	•
Hertford Regional College							•					
Huntingdonshire Regional College	•	•	•	•			•	•				
Lowestoft College									•	•	•	•
North Hertfordshire College	•	•	•	•	•	•	•	•				
Oaklands College							•					
Peterborough Regional College			•	•								
The College of North West London							•	•				
The College of West Anglia			•	•					•	•		
West Herts College							•	•				
West Suffolk College			•	•					•	•	•	•



Energy/Utilities Industry

Electricity Industry

	Bedfordshire and Luton		Cambridgeshire		Essex		Hertfordshire		Norfolk		Suffolk	
	Apprenticeship	Advanced Apprenticeship	Apprenticeship	Advanced Apprenticeship	Apprenticeship	Advanced Apprenticeship	Apprenticeship	Advanced Apprenticeship	Apprenticeship	Advanced Apprenticeship	Apprenticeship	Advanced Apprenticeship
EAGIT Ltd									•	•	•	•
National Grid						•		•				

Gas Industry

	Bedfordshire and Luton		Cambridgeshire		Essex		Hertfordshire		Norfolk		Suffolk	
	Apprenticeship	Advanced Apprenticeship	Apprenticeship	Advanced Apprenticeship	Apprenticeship	Advanced Apprenticeship	Apprenticeship	Advanced Apprenticeship	Apprenticeship	Advanced Apprenticeship	Apprenticeship	Advanced Apprenticeship
British Gas Services		•		•		•		•		•		•
EAGIT Ltd									•	•	•	•
National Grid								•		•		
The College of North West London							•					

Water Industry

	Bedfordshire and Luton		Cambridgeshire		Essex		Hertfordshire		Norfolk		Suffolk	
	Apprenticeship	Advanced Apprenticeship	Apprenticeship	Advanced Apprenticeship	Apprenticeship	Advanced Apprenticeship	Apprenticeship	Advanced Apprenticeship	Apprenticeship	Advanced Apprenticeship	Apprenticeship	Advanced Apprenticeship
EAGIT Ltd									•	•	•	•

Financial Service

Accounting

	Bedfordshire and Luton		Cambridgeshire		Essex		Hertfordshire		Norfolk		Suffolk	
	Apprenticeship	Advanced Apprenticeship	Apprenticeship	Advanced Apprenticeship	Apprenticeship	Advanced Apprenticeship	Apprenticeship	Advanced Apprenticeship	Apprenticeship	Advanced Apprenticeship	Apprenticeship	Advanced Apprenticeship
BCT Consortium					•	•						
Boston College			•	•								
City College Norwich									•	•		
Ensors Chartered Accountants											•	•
Hertford Regional College							•	•				
Huntingdonshire Regional College			•	•								
Kaplan Financial			•	•					•	•	•	•
Mymar Training Ltd	•	•	•	•	•	•	•	•	•	•	•	•
North Hertfordshire College	•	•	•	•	•	•	•	•				
Oaklands College							•	•				
SEEVIC					•	•						
Suffolk New College											•	•
West Suffolk College			•	•					•	•	•	•
W S Training				•					•	•		•

Advising on Financial Products

	Bedfordshire and Luton		Cambridgeshire		Essex		Hertfordshire		Norfolk		Suffolk	
	Apprenticeship	Advanced Apprenticeship	Apprenticeship	Advanced Apprenticeship	Apprenticeship	Advanced Apprenticeship	Apprenticeship	Advanced Apprenticeship	Apprenticeship	Advanced Apprenticeship	Apprenticeship	Advanced Apprenticeship
BCT Consortium					•							
Boston College			•	•								
City College Norwich									•	•		
WS Training			•	•					•	•	•	•

Payroll

	Bedfordshire and Luton		Cambridgeshire		Essex		Hertfordshire		Norfolk		Suffolk	
	Apprenticeship	Advanced Apprenticeship	Apprenticeship	Advanced Apprenticeship	Apprenticeship	Advanced Apprenticeship	Apprenticeship	Advanced Apprenticeship	Apprenticeship	Advanced Apprenticeship	Apprenticeship	Advanced Apprenticeship
Huntingdonshire Regional College			•	•								
Mymar Training Ltd	•	•	•	•	•	•	•	•	•	•	•	•

Food and Drink

Food Manufacture

	Bedfordshire and Luton		Cambridgeshire		Essex		Hertfordshire		Norfolk		Suffolk	
	Apprenticeship	Advanced Apprenticeship	Apprenticeship	Advanced Apprenticeship	Apprenticeship	Advanced Apprenticeship	Apprenticeship	Advanced Apprenticeship	Apprenticeship	Advanced Apprenticeship	Apprenticeship	Advanced Apprenticeship
Great Yarmouth College									•	•	•	•
Huntingdonshire Regional College			•	•								
Meat East Anglia Trades (Ipswich) Ltd	•	•	•	•	•	•	•	•	•	•	•	•
Otley College					•	•			•	•	•	•
Poultec Training Ltd	•	•	•	•	•	•	•	•	•	•	•	•
Sainsbury's Supermarkets Ltd	•	•	•	•	•	•	•	•	•	•	•	•
West Anglia Training Association		•		•	•		•		•			•
West Suffolk College			•						•		•	•



Hair and Beauty

Beauty Therapy including Nail Services and Spa Therapy

	Bedfordshire and Luton		Cambridgeshire		Essex		Hertfordshire		Norfolk		Suffolk	
	Apprenticeship	Advanced Apprenticeship	Apprenticeship	Advanced Apprenticeship	Apprenticeship	Advanced Apprenticeship	Apprenticeship	Advanced Apprenticeship	Apprenticeship	Advanced Apprenticeship	Apprenticeship	Advanced Apprenticeship
Huntingdonshire Regional College	•	•	•	•			•	•				

Hairdressing

	Bedfordshire and Luton		Cambridgeshire		Essex		Hertfordshire		Norfolk		Suffolk	
	Apprenticeship	Advanced Apprenticeship	Apprenticeship	Advanced Apprenticeship	Apprenticeship	Advanced Apprenticeship	Apprenticeship	Advanced Apprenticeship	Apprenticeship	Advanced Apprenticeship	Apprenticeship	Advanced Apprenticeship
APEX (Harlow College)					•							
Barnfield College	•	•										
BCT Consortium					•	•						
Bedford College	•	•										
Bedfordshire and Luton Education Business Partnership	•	•										
Cambridge Regional College			•	•								
Central Training Group					•	•						
City College Norwich									•	•		
Dunstable College (Chiltern Business Training)	•	•										
Great Yarmouth College									•	•	•	•
Hertford Regional College							•	•				
Huntingdonshire Regional College	•	•	•	•			•	•				
J & E Training Ltd					•	•						
J O Academy of Hairdressing									•	•	•	•
Lowestoft College									•	•	•	•
North Hertfordshire College	•	•	•	•	•	•	•	•				
Peterborough College of Adult Education			•									
Peterborough Regional College			•	•								
Suffolk New College											•	•
The College of West Anglia			•	•					•	•		
Thurrock and Basildon College					•	•						
UK Training and Development							•	•				
West Herts College							•					
West Suffolk College			•	•					•	•	•	•
WS Training											•	•

Hospitality and Travel

Hospitality and Catering

	Bedfordshire and Luton		Cambridgeshire		Essex		Hertfordshire		Norfolk		Suffolk	
	Apprenticeship	Advanced Apprenticeship	Apprenticeship	Advanced Apprenticeship	Apprenticeship	Advanced Apprenticeship	Apprenticeship	Advanced Apprenticeship	Apprenticeship	Advanced Apprenticeship	Apprenticeship	Advanced Apprenticeship
Anne Clarke Associates Ltd	•	•	•	•	•	•	•	•	•	•	•	•
BCT Consortium						•						
Boston College			•	•								
Cambridge Regional College			•	•								
City College Norwich									•	•		
Great Yarmouth College									•	•	•	•
Huntingdonshire Regional College	•	•	•	•			•	•				
Mymar Training Ltd	•	•	•	•					•	•	•	•
North Hertfordshire College	•	•	•	•	•	•	•	•				
Oaklands College							•					
Otley College					•	•			•	•	•	•
Peterborough College of Adult Education			•									
Peterborough Regional College			•	•								
Poultec Training Limited	•	•	•	•	•	•	•	•	•	•	•	•
Protocol Skills	•	•	•	•	•	•			•	•	•	•
Suffolk New College											•	•
The College of West Anglia			•	•					•	•		
VT Training	•		•		•		•		•		•	
West Herts College							•	•				
West Suffolk College			•	•					•	•	•	•
Whitbread Group PLC	•	•	•	•	•	•	•	•	•	•	•	•

Travel and Tourism Services

	Bedfordshire and Luton		Cambridgeshire		Essex		Hertfordshire		Norfolk		Suffolk	
	Apprenticeship	Advanced Apprenticeship	Apprenticeship	Advanced Apprenticeship	Apprenticeship	Advanced Apprenticeship	Apprenticeship	Advanced Apprenticeship	Apprenticeship	Advanced Apprenticeship	Apprenticeship	Advanced Apprenticeship
TUI Travel PLC	•	•	•	•	•	•	•	•	•	•	•	•

Information Technology and Communications

IT and Telecomms Professionals

	Bedfordshire and Luton		Cambridgeshire		Essex		Hertfordshire		Norfolk		Suffolk	
	Apprenticeship	Advanced Apprenticeship	Apprenticeship	Advanced Apprenticeship	Apprenticeship	Advanced Apprenticeship	Apprenticeship	Advanced Apprenticeship	Apprenticeship	Advanced Apprenticeship	Apprenticeship	Advanced Apprenticeship
Barnfield College		•										
BCT Consortium					•	•						
Cambridge Regional College			•	•								
Huntingdonshire Regional College	•	•	•	•			•	•				
Inspire Training											•	•
Intraining CBE	•		•		•		•		•			
ITEC					•							
Management and Personnel Services Ltd	•	•										
North Hertfordshire College	•	•	•	•	•	•	•	•				
Otley College					•	•			•	•	•	•
Peterborough College of Adult Education			•	•								
Poultec Training Limited	•	•	•	•	•	•	•	•	•	•	•	•
Suffolk New College											•	•
TBG Learning					•	•					•	•
The College of North West London							•	•				
West Suffolk College			•	•					•	•	•	•
Zenos Ltd		•		•					•	•	•	•

IT Users

	Bedfordshire and Luton		Cambridgeshire		Essex		Hertfordshire		Norfolk		Suffolk	
	Apprenticeship	Advanced Apprenticeship	Apprenticeship	Advanced Apprenticeship	Apprenticeship	Advanced Apprenticeship	Apprenticeship	Advanced Apprenticeship	Apprenticeship	Advanced Apprenticeship	Apprenticeship	Advanced Apprenticeship
Bedford Training Group Ltd	•	•										
Dunstable College (Chiltern Business Training)	•	•										
Hertford Regional College							•	•				
Mymar Training Ltd	•	•	•	•	•	•	•	•	•	•	•	•
Norfolk Training Services Ltd									•	•		
Paston College									•	•		
Peterborough Regional College			•	•								
Poultec Training Limited	•	•	•	•	•	•	•	•	•	•	•	•
SEETEC Business Technology Ltd					•	•						
The Chamber	•											
The College of West Anglia			•	•					•	•		
West Anglia Training Association	•	•	•	•	•	•	•	•	•	•	•	•
West Suffolk College			•	•					•	•	•	•
WS Training			•	•					•	•	•	•



Logistics

Driving Goods Vehicles

	Bedfordshire and Luton		Cambridgeshire		Essex		Hertfordshire		Norfolk		Suffolk	
	Apprenticeship	Advanced Apprenticeship	Apprenticeship	Advanced Apprenticeship	Apprenticeship	Advanced Apprenticeship	Apprenticeship	Advanced Apprenticeship	Apprenticeship	Advanced Apprenticeship	Apprenticeship	Advanced Apprenticeship
APEX (Harlow College)					•	•						
Bedford Training Group Ltd	•	•										
Norfolk Training Services Ltd									•	•		
Robert Wiseman Dairies Plc	•	•	•	•			•	•				
WS Training			•	•					•	•	•	•

Traffic Office

	Bedfordshire and Luton		Cambridgeshire		Essex		Hertfordshire		Norfolk		Suffolk	
	Apprenticeship	Advanced Apprenticeship	Apprenticeship	Advanced Apprenticeship	Apprenticeship	Advanced Apprenticeship	Apprenticeship	Advanced Apprenticeship	Apprenticeship	Advanced Apprenticeship	Apprenticeship	Advanced Apprenticeship
BCT Consortium					•	•						
ITS Training Services	•	•	•	•	•	•	•	•	•	•	•	•
WS Training			•	•					•	•	•	•

Warehousing and Storage

	Bedfordshire and Luton		Cambridgeshire		Essex		Hertfordshire		Norfolk		Suffolk	
	Apprenticeship	Advanced Apprenticeship	Apprenticeship	Advanced Apprenticeship	Apprenticeship	Advanced Apprenticeship	Apprenticeship	Advanced Apprenticeship	Apprenticeship	Advanced Apprenticeship	Apprenticeship	Advanced Apprenticeship
APEX (Harlow College)					•	•						
BCT Consortium					•	•						
Bedford Training Group Ltd	•	•										
Broadland Council Training Services									•	•	•	•
Cambridge Regional College			•	•								
Central Training Group					•	•						
Great Yarmouth College									•	•	•	•
Huntingdonshire Regional College	•	•	•	•			•	•				
Intraining CBE	•				•		•		•		•	
ITS Training Services	•	•	•	•	•	•	•	•	•	•	•	•
JHP Training Ltd			•	•			•	•			•	•
Management and Personnel Services Ltd	•	•	•	•	•	•	•	•				
Norfolk Training Services Ltd									•			
Oaklands College							•					
Paston College									•	•		
Protocol Skills					•	•			•	•		
Robert Wiseman Dairies Plc	•		•				•					
SEETEC Business Technology Ltd					•	•						
TBG Learning					•	•					•	•
The College of West Anglia			•	•					•	•		
Thurrock and Basildon College					•	•						
Vogal Training				•								
VT Training	•	•	•	•	•	•	•	•	•	•	•	•
West Anglia Training Association		•	•	•	•	•		•	•	•	•	•
West Suffolk College			•	•					•	•	•	•
WS Training			•	•					•	•	•	•
YMCA Training									•	•	•	•

Manufacturing and Processing

Ceramics

	Bedfordshire and Luton		Cambridgeshire		Essex		Hertfordshire		Norfolk		Suffolk	
	Apprenticeship	Advanced Apprenticeship	Apprenticeship	Advanced Apprenticeship	Apprenticeship	Advanced Apprenticeship	Apprenticeship	Advanced Apprenticeship	Apprenticeship	Advanced Apprenticeship	Apprenticeship	Advanced Apprenticeship
Management and Personnel Services Ltd	•	•	•	•	•	•	•	•				

Coating Operations

	Bedfordshire and Luton		Cambridgeshire		Essex		Hertfordshire		Norfolk		Suffolk	
	Apprenticeship	Advanced Apprenticeship	Apprenticeship	Advanced Apprenticeship	Apprenticeship	Advanced Apprenticeship	Apprenticeship	Advanced Apprenticeship	Apprenticeship	Advanced Apprenticeship	Apprenticeship	Advanced Apprenticeship
West Suffolk College			•	•					•	•	•	•

Furniture Industry

	Bedfordshire and Luton		Cambridgeshire		Essex		Hertfordshire		Norfolk		Suffolk	
	Apprenticeship	Advanced Apprenticeship	Apprenticeship	Advanced Apprenticeship	Apprenticeship	Advanced Apprenticeship	Apprenticeship	Advanced Apprenticeship	Apprenticeship	Advanced Apprenticeship	Apprenticeship	Advanced Apprenticeship
Dunstable College (Chiltern Business Training)	•	•										
Suffolk New College											•	•

Metals Industry

	Bedfordshire and Luton		Cambridgeshire		Essex		Hertfordshire		Norfolk		Suffolk	
	Apprenticeship	Advanced Apprenticeship	Apprenticeship	Advanced Apprenticeship	Apprenticeship	Advanced Apprenticeship	Apprenticeship	Advanced Apprenticeship	Apprenticeship	Advanced Apprenticeship	Apprenticeship	Advanced Apprenticeship
Great Yarmouth College									•	•	•	•
Management and Personnel Services Ltd	•	•	•	•	•	•	•	•				

Print and Printed Packaging

	Bedfordshire and Luton		Cambridgeshire		Essex		Hertfordshire		Norfolk		Suffolk	
	Apprenticeship	Advanced Apprenticeship	Apprenticeship	Advanced Apprenticeship	Apprenticeship	Advanced Apprenticeship	Apprenticeship	Advanced Apprenticeship	Apprenticeship	Advanced Apprenticeship	Apprenticeship	Advanced Apprenticeship
Central Training Group					•	•						
Management and Personnel Services Ltd	•	•	•	•	•	•	•	•				
WS Training									•	•	•	•

Signmaking

	Bedfordshire and Luton		Cambridgeshire		Essex		Hertfordshire		Norfolk		Suffolk	
	Apprenticeship	Advanced Apprenticeship	Apprenticeship	Advanced Apprenticeship	Apprenticeship	Advanced Apprenticeship	Apprenticeship	Advanced Apprenticeship	Apprenticeship	Advanced Apprenticeship	Apprenticeship	Advanced Apprenticeship
Management and Personnel Services Ltd	•	•	•	•	•	•	•	•				

Marine Industry

Marine Industry

	Bedfordshire and Luton		Cambridgeshire		Essex		Hertfordshire		Norfolk		Suffolk	
	Apprenticeship	Advanced Apprenticeship	Apprenticeship	Advanced Apprenticeship	Apprenticeship	Advanced Apprenticeship	Apprenticeship	Advanced Apprenticeship	Apprenticeship	Advanced Apprenticeship	Apprenticeship	Advanced Apprenticeship
EAGIT Ltd									•		•	
Great Yarmouth College									•	•	•	•

Property

Cleaning and Support Service Industry

	Bedfordshire and Luton		Cambridgeshire		Essex		Hertfordshire		Norfolk		Suffolk	
	Apprenticeship	Advanced Apprenticeship	Apprenticeship	Advanced Apprenticeship	Apprenticeship	Advanced Apprenticeship	Apprenticeship	Advanced Apprenticeship	Apprenticeship	Advanced Apprenticeship	Apprenticeship	Advanced Apprenticeship
Bedford Training Group Ltd	•	•										
Huntingdonshire Regional College	•	•	•	•			•	•				
Lifeskills Solutions					•							
Oaklands College							•					
WS Training			•	•					•	•	•	•

Property Services

	Bedfordshire and Luton		Cambridgeshire		Essex		Hertfordshire		Norfolk		Suffolk	
	Apprenticeship	Advanced Apprenticeship	Apprenticeship	Advanced Apprenticeship	Apprenticeship	Advanced Apprenticeship	Apprenticeship	Advanced Apprenticeship	Apprenticeship	Advanced Apprenticeship	Apprenticeship	Advanced Apprenticeship
SEETEC Business Technology Ltd					•	•						

Public Services

Children's Care, Learning and Development

	Bedfordshire and Luton		Cambridgeshire		Essex		Hertfordshire		Norfolk		Suffolk	
	Apprenticeship	Advanced Apprenticeship	Apprenticeship	Advanced Apprenticeship	Apprenticeship	Advanced Apprenticeship	Apprenticeship	Advanced Apprenticeship	Apprenticeship	Advanced Apprenticeship	Apprenticeship	Advanced Apprenticeship
A4e Skills	•	•										
Anne Clarke Associates Ltd	•	•	•	•	•	•	•	•	•	•	•	•
APEX (Harlow College)					•	•						
BCT Consortium					•	•						
Bedford College	•	•										
Bedfordshire and Luton Education Business Partnership	•	•										
Cambridge Regional College			•	•								
City College Norwich									•	•		
Eden Training					•	•						
Hertford Regional College							•	•				
Huntingdonshire Regional College	•	•	•	•			•	•				
JHP Training Ltd	•	•	•	•	•	•	•	•	•	•	•	•
Kidsunlimited	•	•	•	•	•	•	•	•	•	•	•	•
Management and Personnel Services Ltd	•	•	•	•	•	•	•	•				
Mymar Training Ltd	•	•	•	•	•	•	•	•	•		•	
North Hertfordshire College	•	•	•	•	•	•	•	•				
Oaklands College							•	•				
Peterborough College of Adult Education			•	•								
Peterborough Regional College			•	•								
The College of North West London							•					
The College of West Anglia			•	•					•	•		
Vocational Training Services					•	•						
West Suffolk College			•	•					•	•	•	•
YMCA Training			•	•			•	•	•	•	•	•

Dental Nursing

	Bedfordshire and Luton		Cambridgeshire		Essex		Hertfordshire		Norfolk		Suffolk	
	Apprenticeship	Advanced Apprenticeship	Apprenticeship	Advanced Apprenticeship	Apprenticeship	Advanced Apprenticeship	Apprenticeship	Advanced Apprenticeship	Apprenticeship	Advanced Apprenticeship	Apprenticeship	Advanced Apprenticeship
Barnfield College		•										
John G Plummer and Associates										•		
Peterborough College of Adult Education			•									
West Suffolk College				•						•		•



Health and Social Care

	Bedfordshire and Luton		Cambridgeshire		Essex		Hertfordshire		Norfolk		Suffolk	
	Apprenticeship	Advanced Apprenticeship	Apprenticeship	Advanced Apprenticeship	Apprenticeship	Advanced Apprenticeship	Apprenticeship	Advanced Apprenticeship	Apprenticeship	Advanced Apprenticeship	Apprenticeship	Advanced Apprenticeship
A4e Skills	•	•										
Anne Clarke Associates Ltd	•	•	•	•	•	•	•	•	•	•	•	•
APEX (Harlow College)					•	•						
Barnfield College		•										
BCT Consortium					•	•						
Bedford College	•	•										
Cambridge Regional College			•	•								
Care UK PLC			•	•	•	•						
City College Norwich									•	•		
Dunstable College (Chiltern Business Training)	•	•										
Great Yarmouth College									•	•	•	•
JHP Training Ltd	•	•	•	•	•	•	•	•	•	•	•	•
Lifeskills Solutions					•	•						
Management and Personnel Services Ltd	•	•	•	•	•	•	•	•				
North Hertfordshire College	•	•	•	•	•	•	•	•				
Oaklands College							•	•				
Peterborough College of Adult Education			•	•								
TBG Learning					•	•					•	•
The College of West Anglia									•	•		
VT Training	•	•	•	•	•	•	•	•	•	•	•	•
Vocational Training Services					•	•						
West Suffolk College			•	•					•	•	•	•
YMCA Training									•	•	•	•

Pharmacy Assistants and Technicians

	Bedfordshire and Luton		Cambridgeshire		Essex		Hertfordshire		Norfolk		Suffolk	
	Apprenticeship	Advanced Apprenticeship	Apprenticeship	Advanced Apprenticeship	Apprenticeship	Advanced Apprenticeship	Apprenticeship	Advanced Apprenticeship	Apprenticeship	Advanced Apprenticeship	Apprenticeship	Advanced Apprenticeship
West Suffolk College			•	•					•	•	•	•

Security Services

	Bedfordshire and Luton		Cambridgeshire		Essex		Hertfordshire		Norfolk		Suffolk	
	Apprenticeship	Advanced Apprenticeship	Apprenticeship	Advanced Apprenticeship	Apprenticeship	Advanced Apprenticeship	Apprenticeship	Advanced Apprenticeship	Apprenticeship	Advanced Apprenticeship	Apprenticeship	Advanced Apprenticeship
Management and Personnel Services Ltd	•	•	•	•	•	•	•	•				

Sports and Fitness

Active Leisure and Learning

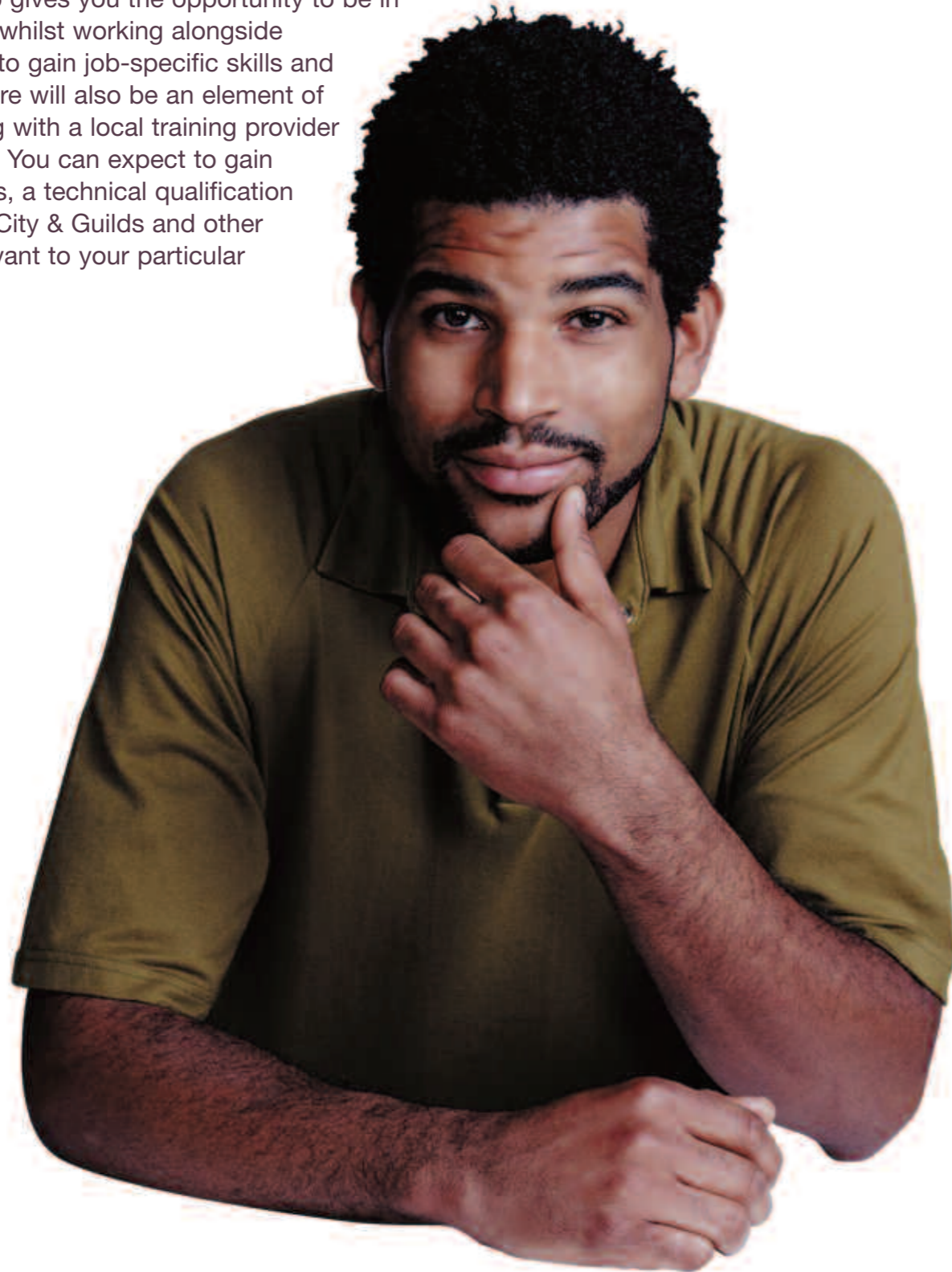
	Bedfordshire and Luton		Cambridgeshire		Essex		Hertfordshire		Norfolk		Suffolk	
	Apprenticeship	Advanced Apprenticeship	Apprenticeship	Advanced Apprenticeship	Apprenticeship	Advanced Apprenticeship	Apprenticeship	Advanced Apprenticeship	Apprenticeship	Advanced Apprenticeship	Apprenticeship	Advanced Apprenticeship
BCT Consortium					•	•						
Cambridge Regional College			•									
City College Norwich									•	•		
Crown College					•	•						
Easton College			•	•	•	•			•	•	•	•
ITS Training Services	•	•	•	•	•	•	•	•	•	•	•	•
North Hertfordshire College	•	•	•	•	•	•	•	•				
Otley College					•	•			•	•	•	•
Rising Stars (Health Clubs) Ltd	•	•	•	•	•	•	•	•	•	•	•	•
SEEVIC					•	•						
The College of West Anglia			•	•					•	•		
VT Training	•	•	•	•	•	•	•	•	•	•	•	•
West Herts College							•	•				
YMCA Training									•	•	•	•



What next?

It is becoming increasingly difficult for those without skills or qualifications to find stable employment.

An Apprenticeship gives you the opportunity to be in paid employment whilst working alongside experienced staff to gain job-specific skills and qualifications. There will also be an element of off-the-job training with a local training provider such as a college. You can expect to gain an NVQ, Key Skills, a technical qualification such as BTEC or City & Guilds and other qualifications relevant to your particular occupation.



To get the ball rolling and find out more

Visit www.apprenticeships.org.uk (home to the online Apprenticeships vacancy matching service) or call the Apprenticeships helpline **08000 150 600**. You'll find more details about the areas of work you are interested in.

You can also seek further information on Apprenticeships through teachers, careers advisers, Connexions and your local college or training provider. If you are already in work ask your employer about Apprenticeships.

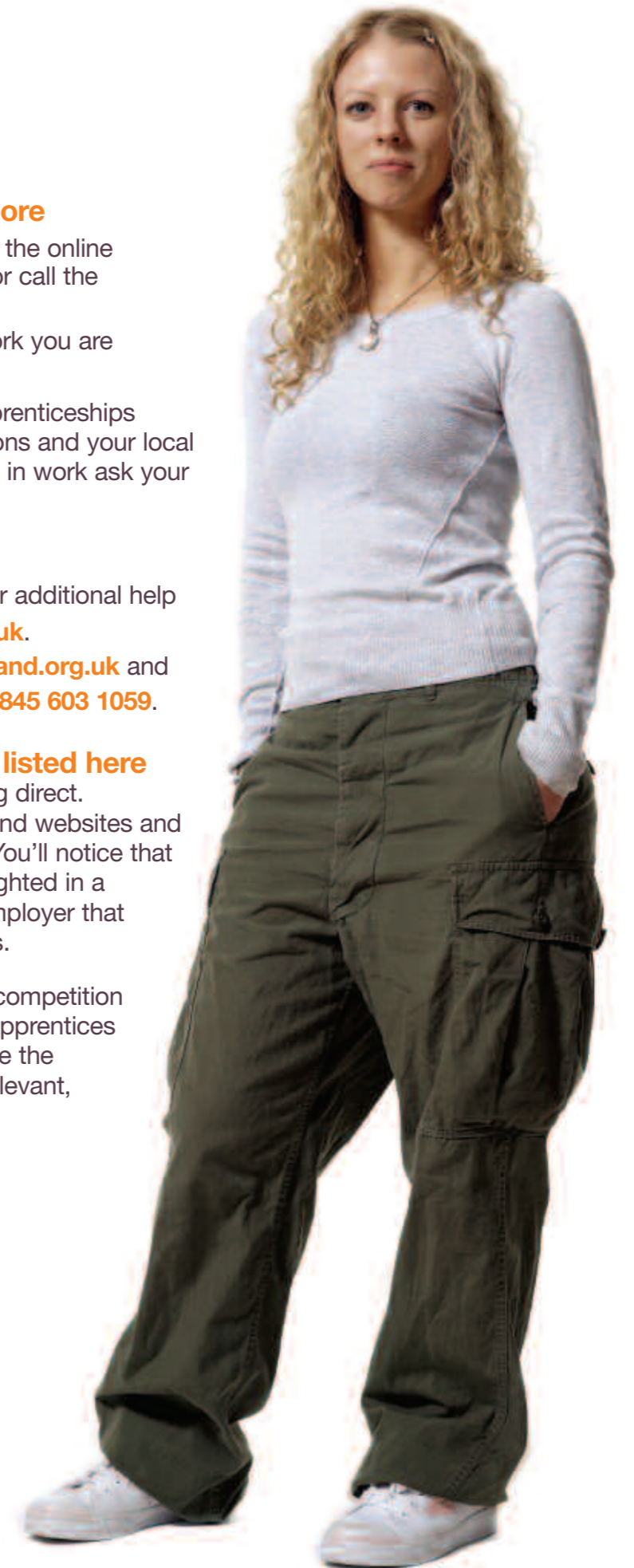
Over 19?

You can contact your local Jobcentre Plus for additional help and advice or visit www.jobcentreplus.gov.uk. Alternatively visit www.nextstep.eastofengland.org.uk and click on the East of England button. Or call **0845 603 1059**.

Go direct to providers or employers listed here

You can apply for an Apprenticeship by going direct. Look up a provider or employer here, you'll find websites and telephone numbers to help get you started. You'll notice that some of the providers in the tables are highlighted in a darker tint, that's to show that they are an employer that only offer Apprenticeships to their employees.

Apprenticeships are not an easy option, the competition for Apprenticeship places is fierce because apprentices and employers know that Apprenticeships are the gold standard for getting the skills that are relevant, appropriate and focused on their success.



Contact details

A4e Skills	0114 223 6653	www.a4eskills.co.uk
Anne Clarke Associates Ltd	01366 389900	www.anneclarkeltd.co.uk
APEX (Harlow College)	01279 868212	www.harlow-college.ac.uk
Badgehurst Training Ltd	01373 891440	www.badgehurst-training.co.uk
BAM Nuttall Ltd	01276 854883	www.bamnuttall.co.uk
Barnfield College	01582 569579	www.barnfield.ac.uk
BCT Consortium	01206 712089	www.bctconsortium.org.uk
Bedford College	01234 291919	www.bedford.ac.uk
Bedfordshire and Luton Education Business Partnership	01525 408080	www.blebp.co.uk
Bedford Training Group Ltd	01234 843804	www.btg.org.uk
British Gas Services	-	www.britishgasacademy.co.uk
Boston College	01205 353030	www.boston.ac.uk
Broadland Council Training Services	01603 788950	www.broadland.gov.uk/bcts
Cambridge Regional College	01223 418200	www.camre.ac.uk
Care UK Plc	01206 752557	www.careuk.com
Central Training Group (The NOVA Partnership)	0800 783 2901	www.centraltraininggroup.com
Citroën UK Ltd	08706 069000 01753 843113	www.citroenapprenticeships.com
City College Norwich	01603 773773	www.ccn.ac.uk
ConstructionSkills	0030 456 5007	www.bconstructive.co.uk
Crown College (The NOVA Partnership)	01702 341169	www.crowncollege.co.uk
Dollond and Aitchison	0121 697 2221	www.danda.co.uk
Dunstable College (Chiltern Business Training)	01582 861607	www.dunstable.ac.uk/chilternbusinesstraining
EAGIT Ltd	01603 401606	www.eagit.org
East of England Co-operative Society	01473 230303	www.eastofengland.coop
Easton College	01603 731200	www.easton-college.ac.uk
Eclipse Training Ltd	01933 358492	www.eclipsetrainingltd.co.uk
Eden Training (The NOVA Partnership)	01702 470210	www.edentraining.co.uk
Ensors Chartered Accountants	01473 220022	www.ensors.co.uk
Ford Motor Company Ltd	01277 253000	www.ford.co.uk
Great Yarmouth College	01493 418418	www.gyc.ac.uk
Hertford Regional College		www.hrc.ac.uk
Broxbourne	01992 411525	
Ware	01992 411834	
Honda Apprenticeship Programme	0870 2411 555	www.hondapeople.co.uk/apprentice
HSBC Bank plc	01788 575090	via Intec Business Colleges: www.getoncourse.net
Huntingdonshire Regional College	01480 379163	www.huntingdon.ac.uk
Inspire Training at Copleston and Holywells Sixth Form	01473 725602	www.copleston.suffolk.sch.uk/inspiretraining.htm
Intraining CBE	01733 558000	www.cbe.co.uk
ITEC Learning Technologies (The NOVA Partnership)	01268 286929	www.iteclearntech.co.uk
ITS Training Services	08456 12 33 44	www.itstraining.co.uk
Jaguar / Land Rover / Volvo Apprenticeships	01926 648107	www.jaguarapprenticeships.com www.landroverapprenticeships.com www.volvocars.co.uk/apprentice
J & E Training Ltd (The NOVA Partnership)	01268 286403	www.j-ettraining.com
JHP Training	0845 603 4053	www.jhptraining.com
J O Academy of Hairdressing Ltd	01603 886969	www.joacademy.co.uk
John G Plummer and Associates	01493 720653	www.plummers.co.uk
Kaplan Financial	0122 341 4514	www.kaplanfinancial.co.uk
KEITS	01923 854586	www.keits.co.uk

Kidsunlimited	0845 365 2191	www.kidsunlimited.co.uk
Lifeskills Solutions Ltd (The NOVA Partnership)	01268 272200	www.lifeskillssolutions.net
Lowestoft College	01502 525172	www.lowestoft.ac.uk
Management and Personnel Services Ltd	01234 436156	www.mapstraining.co.uk
Meat East Anglia Trades (Ipswich) Ltd	01473 270757	www.meatipswich.co.uk
Medivet	01923 470 000	www.phed.co.uk
Mymar Training Ltd	01480 414188	www.mymartraining.co.uk
Nacro	01473 729230	www.nacro.org.uk
National Grid	0845 803 3191	www.nationalgrid.com/freshtalent/apprentice
Norfolk Training Services Ltd	01603 259900	www.norfolktraining.co.uk
North Hertfordshire College	01462 424242	www.nhc.ac.uk
Norwich Union Insurance	01603 622200	www.norwichunion.com
Oaklands College	01727 737000 ext 4695	www.oaklands.ac.uk
Otley College	01473 785543	www.otleycollege.ac.uk
Paston College	01692 402334	www.paston.ac.uk
Peterborough College of Adult Education	01733 555197	www.pals.ac.uk
Peterborough Regional College	01733 762121	www.peterborough.ac.uk
Poultec Training Limited	01362 850983	www.poultec.co.uk
Prospects College (The NOVA Partnership)	0800 389 3589	www.prospectscollege.com
Protocol Skills	01480 432474	www.protocol-skills.co.uk
RAC Auto Windscreens	01246 223000	www.rac.co.uk
Renault UK Ltd	0844 4120034	www.renault.co.uk
Ridgemoor Training	01438 842200	www.ridgemoortraining.org.uk
Rising Stars (Health Clubs) Ltd	01603 819938	www.reachyourfullpotential.co.uk
Robert Wiseman Dairies Plc	01228 517742	www.wiseman-dairies.co.uk
Sainsbury's Supermarkets Limited	0845 603 6290	www.sainsburys.co.uk
SEETEC Business Technology Ltd	01702 201070	www.seetec.co.uk
SEEVIC College (The NOVA Partnership)	01268 756111	www.seevic-college.ac.uk
Skillnet Limited	0208 429 7222	www.skillnet.org.uk
Suffolk New College	01473 255885	www.suffolk.ac.uk
TBG Learning	01206 366341	www.tbglearning.com
Thames Water	0118 373 8000	www.thameswater.co.uk
The British Racing School	01638 665103	www.brs.org.uk
The Chamber	01582 522332	www.chamber-business.com/apprenticeships
The College of Animal Welfare	01480 226180	www.caw.ac.uk
The College of North West London	020 8208 5137	www.cnwl.ac.uk
The College of West Anglia		www.col-westanglia.ac.uk
King's Lynn Campus	01553 815280	
Isle Campus	01945 468328	
Thurrock and Basildon College (The NOVA Partnership)	01268 461647	www.tab.ac.uk
Toyota Lexus Academy	0115 8842868	www.toyota-apprenticeship.co.uk www.lexus-apprenticeship.co.uk
TUI Travel Plc	02476 282887	www.thomson.co.uk/jobs
UK Training and Development	01442 230130	www.uktd.co.uk
Vocational Training Services (The NOVA Partnership)		www.vts.ac.uk
North Essex	01206 763 646	
South Essex	01702 353 557	
Vogal Training	01733 380 929	www.vogaltraining.co.uk
VT Training	01473 744952	www.vtplc.com
West Anglia Training Association	01480 435544	www.wata.co.uk
West Herts College	01923 812034	www.westherts.ac.uk
West Suffolk College	01284 716381	www.westsuffolk.ac.uk
Whitbread Group Plc	-	www.whitbread.co.uk
WS Training	01284 788005	www.wstraining.co.uk
YMCA Training		www.ymcatraining.org.uk
Norfolk	01603 620642	
Cambridgeshire	01223 306604	
Suffolk	01473 406126	
Hertfordshire	01707 351415	
Zenos Ltd	0845 055 6404	www.zenos.com

Index

	Pages
A4e Skills	17, 25, 26, 39, 40
Anne Clarke Associates Ltd	18, 34, 39, 40
APEX (Harlow College)	16, 17, 18, 19, 20, 22, 23, 24, 28, 29, 30, 33, 36, 39, 40
Badgehurst Training Ltd	17, 19, 20, 25
BAM Nuttall Ltd	29
Barnfield College	17, 22, 23, 28, 29, 30, 33, 35, 39, 40
BCT Consortium	17, 18, 22, 23, 25, 26, 27, 28, 29, 30, 32, 33, 34, 35, 36, 39, 40, 41
Bedford College	17, 22, 23, 28, 29, 30, 33, 39, 40
Bedfordshire and Luton Education Business Partnership	33, 39
Bedford Training Group Ltd	17, 22, 23, 25, 26, 27, 28, 29, 30, 35, 36, 38
Boston College	17, 18, 25, 26, 32, 34
Broadland Council Training Services	17, 20, 25, 26, 36
British Gas Services	31
Cambridge Regional College	17, 22, 23, 24, 25, 26, 27, 28, 29, 30, 33, 34, 35, 36, 39, 40, 41
Care UK Plc	40
Central Training Group (The NOVA Partnership)	17, 18, 24, 25, 26, 33, 36, 37
Citroën UK Ltd	22
City College Norwich	17, 23, 28, 30, 32, 33, 34, 39, 40, 41
ConstructionSkills	23
Crown College (The NOVA Partnership)	17, 25, 26, 41
Dollond and Aitchison	26
Dunstable College (Chiltern Business Training)	17, 23, 25, 26, 27, 28, 29, 30, 33, 35, 37, 40
EAGIT Ltd	27, 28, 29, 30, 31, 38
East of England Co-operative Society	26
Easton College	19, 20, 41
Eclipse Training Ltd	17, 25
Eden Training (The NOVA Partnership)	17, 25, 39
Ensors Chartered Accountants	32
Ford Motor Company Ltd	22
Great Yarmouth College	16, 17, 20, 22, 23, 25, 26, 27, 28, 29, 30, 32, 33, 34, 36, 37, 38, 40
Hertford Regional College	17, 22, 23, 25, 26, 28, 30, 32, 33, 35, 39
Honda Apprenticeship Programme	20, 22
HSBC Bank plc	17
Huntingdonshire Regional College	17, 18, 20, 22, 23, 24, 25, 26, 27, 28, 29, 30, 32, 33, 34, 35, 36, 38, 39
Inspire Training at Copleston and Holywells Sixth Form	17, 25, 26, 35
Intraining CBE	17, 18, 24, 25, 26, 35, 36
ITEC Learning Technologies (The NOVA Partnership)	17, 25, 35
ITS Training Services	17, 18, 25, 36, 41
Jaguar / Land Rover / Volvo Apprenticeships	22, 25
J & E Training Ltd (The NOVA Partnership)	33
JHP Training	17, 18, 25, 26, 36, 39, 40
J O Academy of Hairdressing Ltd	33
John G Plummer and Associates	39
Kaplan Financial	32
KEITS	18, 19, 20
Kidsunlimited	39
Lifeskills Solutions Ltd (The NOVA Partnership)	16, 17, 18, 24, 25, 26, 38, 40
Lowestoft College	17, 22, 23, 25, 26, 28, 29, 30, 33

	Pages
Management and Personnel Services Ltd	17, 18, 22, 23, 25, 27, 28, 29, 30, 35, 36, 37, 39, 40
Meat East Anglia Trades (Ipswich) Ltd	32
Medivet	20
Mymar Training Ltd	17, 18, 25, 32, 34, 35, 39
Nacro	26
National Grid	31
Norfolk Training Services Ltd	17, 18, 22, 23, 25, 26, 29, 30, 35, 36
North Hertfordshire College	17, 18, 21, 22, 23, 25, 28, 30, 32, 33, 34, 35, 39, 40, 41
Norwich Union Insurance	25
Oaklands College	16, 17, 18, 19, 20, 21, 23, 25, 26, 29, 30, 32, 34, 36, 38, 39, 40
Otley College	17, 18, 19, 20, 22, 23, 25, 26, 29, 30, 32, 34, 35, 41
Paston College	17, 18, 24, 25, 26, 35, 36
Peterborough College of Adult Education	17, 22, 25, 30, 33, 34, 35, 39, 40
Peterborough Regional College	17, 22, 23, 25, 26, 28, 29, 30, 33, 34, 35, 39
Poultec Training Limited	17, 18, 19, 24, 23, 25, 26, 32, 34, 35
Prospects College (The NOVA Partnership)	23, 27, 28, 29, 30
Protocol Skills	17, 18, 25, 26, 34, 36
RAC Auto Windscreens	29
Renault UK Ltd	22
Ridgmond Training	19, 23
Rising Stars (Health Clubs) Ltd	41
Robert Wiseman Dairies Plc	36
Sainsbury's Supermarkets Limited	32
SEETEC Business Technology Ltd	17, 24, 35, 36, 38
SEEVIC College (The NOVA Partnership)	32, 41
Skillnet Limited	22
Suffolk New College	17, 22, 23, 25, 27, 28, 29, 32, 33, 34, 35, 37
TBG Learning	17, 18, 25, 26, 35, 36, 40
Thames Water	27, 29
The British Racing School	20
The Chamber	17, 18, 25, 35
The College of Animal Welfare	19, 20, 25
The College of North West London	22, 23, 26, 27, 29, 30, 31, 35, 39
The College of West Anglia	17, 19, 20, 22, 23, 25, 26, 27, 28, 29, 30, 33, 35, 34, 36, 39, 40, 41
Thurrock and Basildon College (The NOVA Partnership)	17, 22, 23, 25, 26, 27, 29, 33, 36
Toyota Lexus Academy	22
TUI Travel Plc	34
UK Training and Development	17, 18, 25, 33
Vocational Training Services (The NOVA Partnership)	39, 40
Vogal Training	27, 28, 29, 30, 36
VT Training	17, 18, 24, 25, 26, 34, 36, 40, 41
West Anglia Training Association	17, 25, 27, 28, 29, 30, 32, 35, 36
West Herts College	22, 25, 29, 30, 33, 34, 41
West Suffolk College	17, 22, 23, 25, 26, 27, 28, 29, 30, 32, 33, 34, 35, 36, 37, 39, 40
Whitbread Group Plc	25, 34
WS Training	17, 18, 25, 26, 27, 29, 30, 32, 33, 35, 36, 37, 38
YMCA Training	17, 25, 26, 36, 39, 40, 41
Zenos Ltd	35