

© For information



Leading learning and skills

# FE 16-18 Travel to Learn Patterns

Analysis of 16-18 Travel to Learn patterns for Further Education (FE) providers in the East of England region by Local Authority

Version 1-0

## LSC Suffolk

**June 2008**

Learning and Skills Council  
**East of England**  
Felaw Maltings 42 Felaw Street  
Ipswich IP2 8SJ  
T 0845 019 4180 F 01473 883 090  
[www.lsc.gov.uk](http://www.lsc.gov.uk)

Our world is changing. We all need more skills than ever before. **Our future. It's in our hands.**  
Visit <http://lsc.gov.uk/inourhands> or to speak to an advisor call 0800 011 30 30.

If you are an employer interested in improving the skills of your business, call Train to Gain on 0800 015 55 45 or visit [traintogain.gov.uk](http://traintogain.gov.uk)

## Summary

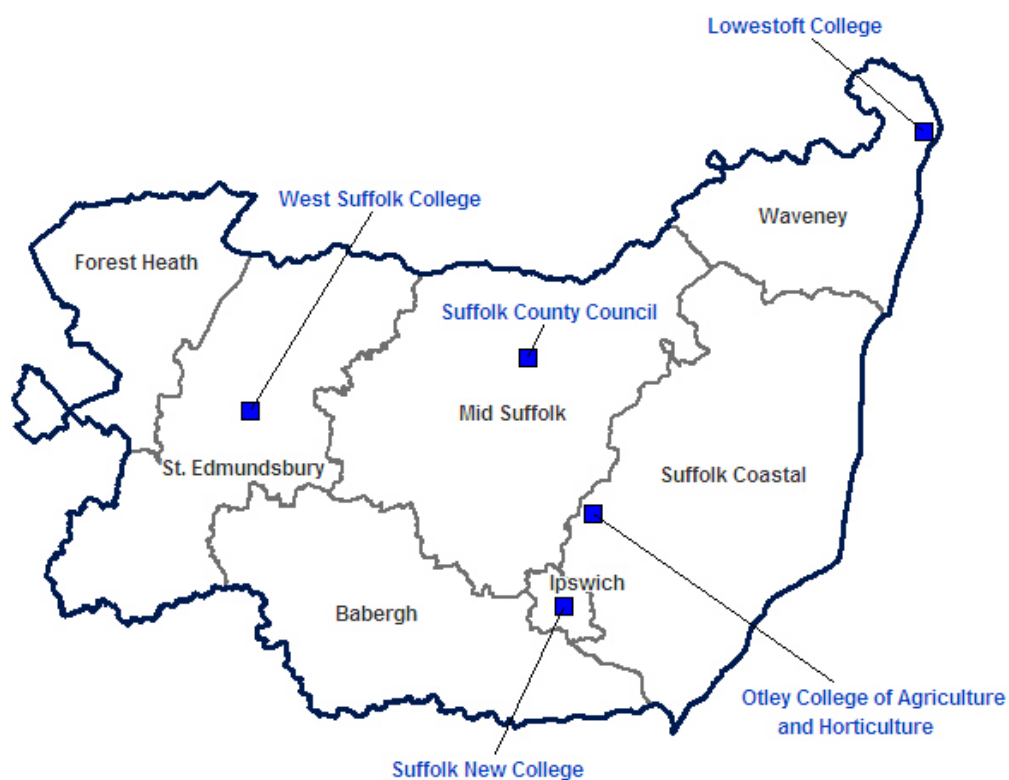
Prepared by	Peps Gharu Brenda Marquiss Anne Ronsky	Data and Analysis Manager Information Advisor Research Assistant
Date	June 2008	version 1-0
Title	Analysis of 16-18 Travel to Learn patterns for Further Education (FE) providers funded by <b>LSC Suffolk</b> by Local Authority.	
Recipients	LSC Area Directors Directors of Children's Services	East of England East of England
Aims	This report provides information on 16-18 Learners: (a) by learners residency accessing LSC funded FE provision by provider (b) from each LA accessing LSC funded FE provision by provider	

## Contents Page

<b>1 FE 16-18 Learners by provider</b>	<b>Page 3-13</b>
Lowestoft College	
Otley College of Agriculture and Horticulture	
Suffolk New College	
Suffolk County Council	
West Suffolk College	
<b>2 FE 16-18 Learners by Local Authority residency</b>	<b>Page 14-33</b>
2.1	LA Bedfordshire
2.2	LA Luton
2.3	LA Cambridgeshire
2.4	LA Peterborough
2.5	LA Essex
2.6	LA Southend-on-Sea
2.7	LA Thurrock
2.8	LA Hertfordshire
2.9	LA Norfolk
2.10	LA Suffolk

# LSC Suffolk

## LSC SUFFOLK



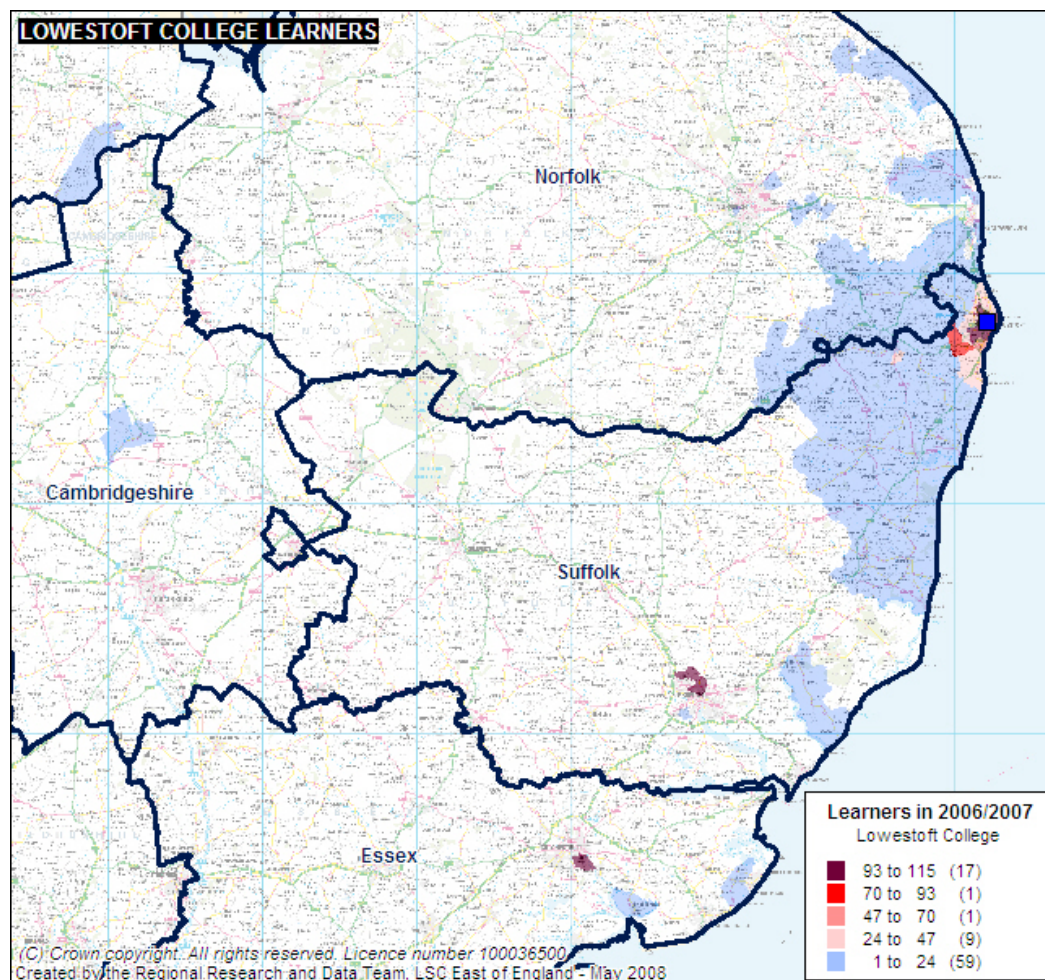
Created by the Regional Research and Data Team, LSC East of England - May 2008  
(C) Crown copyright. All rights reserved. Licence number 100036500

- > Lowestoft College
- > Otley College of Agriculture and Horticulture
- > Suffolk New College
- > Suffolk County Council
- > West Suffolk College

# Lowestoft College

LSC Suffolk  
LA Suffolk

Map 06/07 F05 Distribution of 16-18 FE Learners



**Table 06/07 & 07/08 16-18 FE Learners by district of learner**

District	06/07 F05				07/08 F01			
	Learners		Funding		Learners		Funding	
	numbers	%	£	%	numbers	%	£	%
IPSWICH	1	0%	£738	0%		0%		0%
MID SUFFOLK		0%			1	0%	£7,644	0%
Other	70	6%	£323,527	7%	75	7%	£341,173	7%
ST. EDMUNDSBURY		0%			1	0%	£5,301	0%
SUFFOLK COASTAL	31	3%	£130,127	3%	41	4%	£175,196	4%
WAVENEY	1,005	90%	£4,090,966	89%	1,002	89%	£4,414,690	88%
(blank)	11	1%	£48,552	1%	12	1%	£56,598	1%
<b>Grand Total</b>	<b>1,118</b>	<b>100%</b>	<b>£4,593,910</b>	<b>100%</b>	<b>1,132</b>	<b>100%</b>	<b>£5,000,603</b>	<b>100%</b>

**Table 06/07 & 07/08 16-18 FE Learners by Local Authority of learner**

Local Authority	06/07 F05				07/08 F01			
	Learners		Funding		Learners		Funding	
	numbers	%	£	%	numbers	%	£	%
Birmingham		0.0%		0.0%	1	0.1%	£2,193	0.0%
Essex	4	0.4%	£16,294	0.4%		0.0%		0.0%
Hertfordshire		0.0%		0.0%	1	0.1%	£3,601	0.1%
Kent		0.0%		0.0%	1	0.1%	£4,454	0.1%
Norfolk	63	5.6%	£301,413	6.6%	71	6.3%	£326,498	6.5%
North East Lincolnshire	1	0.1%	£998	0.0%		0.0%		0.0%
Northamptonshire	1	0.1%	£366	0.0%		0.0%		0.0%
Suffolk	1,037	92.8%	£4,221,831	91.9%	1,045	92.3%	£4,602,832	92.0%
Sutton	1	0.1%	£4,456	0.1%		0.0%		0.0%
Waltham Forest		0.0%		0.0%	1	0.1%	£4,426	0.1%
(blank)	11	1.0%	£48,552	1.1%	12	1.1%	£56,598	1.1%
<b>Grand Total</b>	<b>1,118</b>	<b>100.0%</b>	<b>£4,593,910</b>	<b>100.0%</b>	<b>1,132</b>	<b>100.0%</b>	<b>£5,000,603</b>	<b>100.0%</b>

# Otley College of Agriculture and Horticulture

LSC Suffolk  
LA Suffolk

Map 06/07 F05

Distribution of 16-18 FE Learners

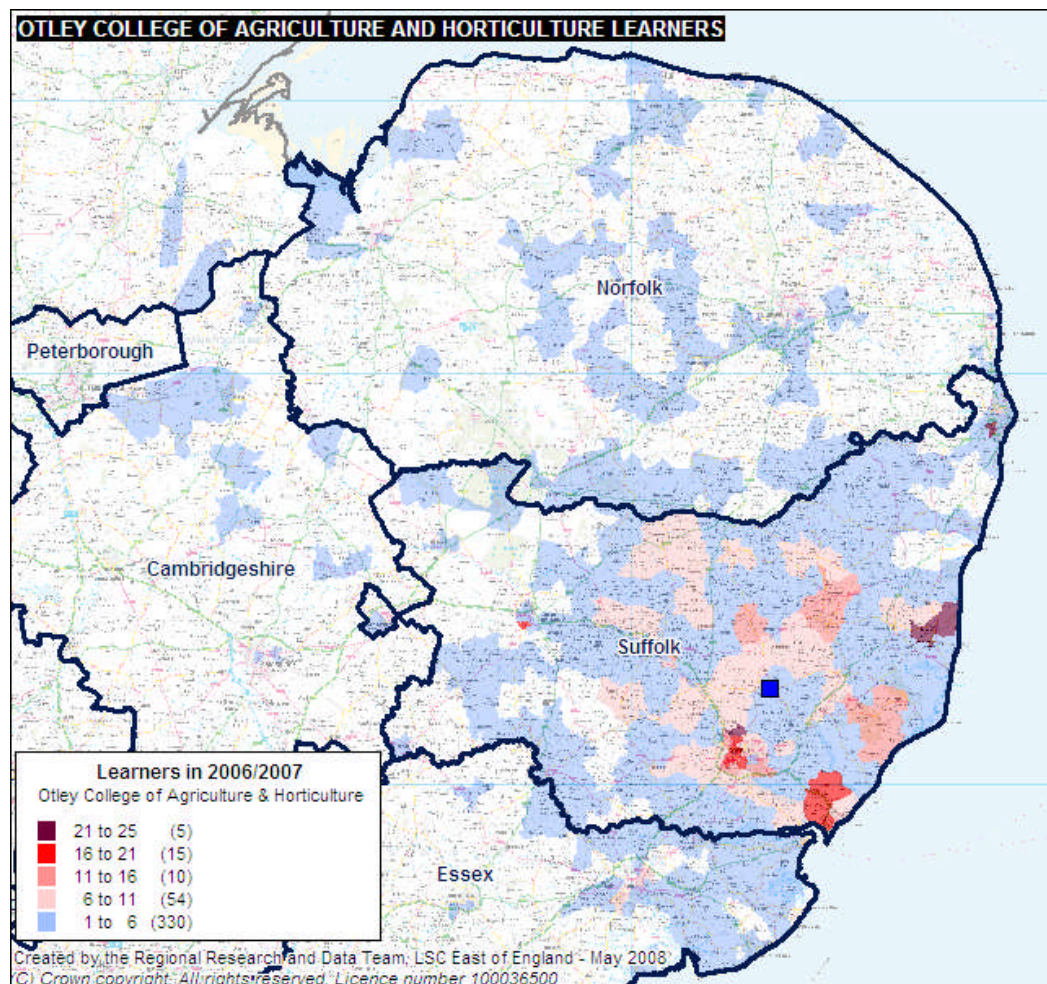


Table 06/07 & 07/08

16-18 FE Learners by district of learner

District	06/07 F05				07/08 F01			
	Learners		Funding		Learners		Funding	
	numbers	%	£	%	numbers	%	£	%
BABERGH	75	8%	£502,522	10%	81	10%	£543,505	10%
FOREST HEATH	4	0%	£45,471	1%	2	0%	£17,080	0%
IPSWICH	208	22%	£1,216,642	24%	167	20%	£1,106,072	19%
MID SUFFOLK	157	17%	£903,946	18%	152	18%	£1,015,824	18%
Other	214	23%	£867,931	17%	189	22%	£1,265,178	22%
ST. EDMUNDSBURY	33	4%	£240,904	5%	34	4%	£269,010	5%
SUFFOLK COASTAL	219	23%	£1,268,698	25%	211	25%	£1,377,633	24%
WAVENEY	24	3%	£106,126	2%	15	2%	£79,564	1%
(blank)	2	0%	£1,072	0%	1	0%	£9,780	0%
<b>Grand Total</b>	<b>936</b>	<b>100%</b>	<b>£5,153,313</b>	<b>100%</b>	<b>852</b>	<b>100%</b>	<b>£5,683,645</b>	<b>100%</b>

**Table 06/07 & 07/08 16-18 FE Learners by Local Authority of learner**

Local Authority	06/07 F05				07/08 F01			
	Learners		Funding		Learners		Funding	
	numbers	%	£	%	numbers	%	£	%
Birmingham		0.0%		0.0%	2	0.2%	£5,198	0.1%
Buckinghamshire	1	0.1%	£8,399	0.2%	1	0.1%	£7,529	0.1%
Cambridgeshire	11	1.2%	£11,191	0.2%	1	0.1%	£6,056	0.1%
Camden		0.0%		0.0%	1	0.1%	£6,957	0.1%
Dorset	1	0.1%	£7,148	0.1%		0.0%		0.0%
Essex	125	13.4%	£761,225	14.8%	170	20.0%	£1,189,279	20.9%
Hertfordshire	1	0.1%	£5,003	0.1%	1	0.1%	£5,578	0.1%
Lincolnshire	1	0.1%	£741	0.0%		0.0%		0.0%
Norfolk	72	7.7%	£71,179	1.4%	12	1.4%	£43,175	0.8%
Peterborough	1	0.1%	£685	0.0%	1	0.1%	£1,406	0.0%
Suffolk	720	76.9%	£4,284,310	83.1%	662	77.7%	£4,408,688	77.6%
Wandsworth	1	0.1%	£2,360	0.0%		0.0%		0.0%
(blank)	2	0.2%	£1,072	0.0%	1	0.1%	£9,780	0.2%
<b>Grand Total</b>	<b>936</b>	<b>100.0%</b>	<b>£5,153,313</b>	<b>100.0%</b>	<b>852</b>	<b>100.0%</b>	<b>£5,683,645</b>	<b>100.0%</b>

# Suffolk New College

LSC Suffolk  
LA Suffolk

Map 06/07 F05

Distribution of 16-18 FE Learners

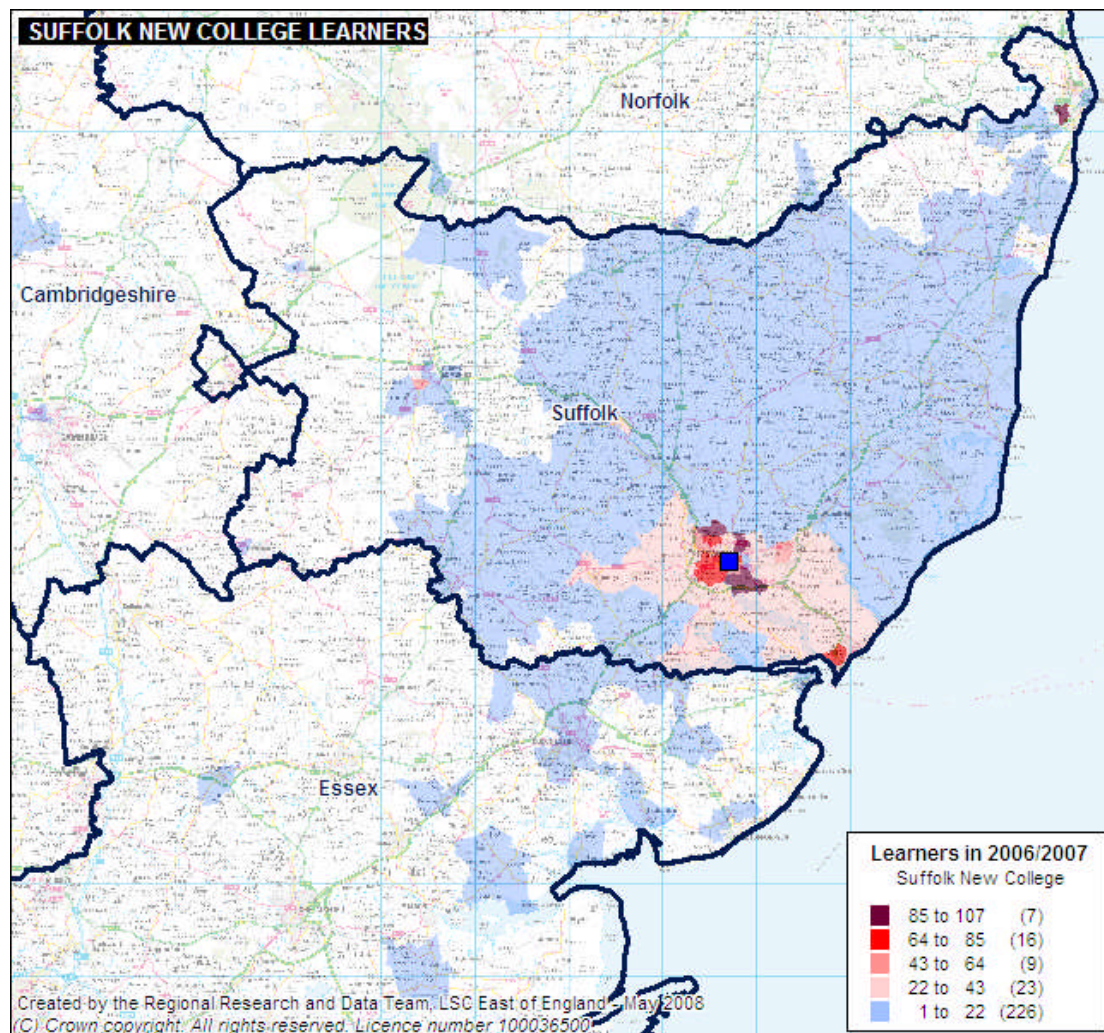


Table 06/07 & 07/08

16-18 FE Learners by district of learner

District	06/07 F05				07/08 F01			
	Learners		Funding		Learners		Funding	
	numbers	%	£	%	numbers	%	£	%
BABERGH	311	13%	£1,285,593	13%	297	12%	£1,307,167	12%
FOREST HEATH	1	0%	£3,912	0%	2	0%	£2,027	0%
IPSWICH	1,118	47%	£4,660,035	47%	1,203	49%	£5,336,189	49%
MID SUFFOLK	239	10%	£1,014,350	10%	256	11%	£1,128,136	10%
Other	73	3%	£310,489	3%	69	3%	£328,298	3%
ST. EDMUNDSBURY	8	0%	£29,361	0%	7	0%	£30,713	0%
SUFFOLK COASTAL	599	25%	£2,471,570	25%	590	24%	£2,654,902	24%
WAVENEY	9	0%	£40,081	0%	7	0%	£33,316	0%
(blank)	9	0%	£45,234	0%	6	0%	£26,953	0%
<b>Grand Total</b>	<b>2,367</b>	<b>100%</b>	<b>£9,860,624</b>	<b>100%</b>	<b>2,437</b>	<b>100%</b>	<b>£10,847,701</b>	<b>100%</b>

**Table 06/07 & 07/08 16-18 FE Learners by Local Authority of learner**

Local Authority	06/07 F05				07/08 F01			
	Learners		Funding		Learners		Funding	
	numbers	%	£	%	numbers	%	£	%
Barking and Dagenham		0.0%		0.0%	1	0.0%	£4,886	0.0%
Barnet	1	0.0%	£1,604	0.0%		0.0%		0.0%
Bedfordshire	3	0.1%	£12,738	0.1%	1	0.0%	£5,754	0.1%
Birmingham	1	0.0%	£4,161	0.0%		0.0%		0.0%
Cambridgeshire		0.0%		0.0%	1	0.0%	£972	0.0%
Cheshire	1	0.0%	£5,694	0.1%		0.0%		0.0%
Cornwall	1	0.0%	£3,478	0.0%	1	0.0%	£1,163	0.0%
East Sussex	1	0.0%	£4,559	0.0%		0.0%		0.0%
Essex	52	2.2%	£220,941	2.2%	48	2.0%	£224,217	2.1%
Havering		0.0%		0.0%	1	0.0%	£5,248	0.0%
Hertfordshire	1	0.0%	£5,060	0.1%	1	0.0%	£5,248	0.0%
Lancashire		0.0%		0.0%	1	0.0%	£8,252	0.1%
Lincolnshire	2	0.1%	£8,503	0.1%	1	0.0%	£4,636	0.0%
Norfolk	4	0.2%	£18,642	0.2%	6	0.2%	£29,378	0.3%
North Yorkshire	1	0.0%	£4,938	0.1%		0.0%		0.0%
Northamptonshire	1	0.0%	£3,879	0.0%	1	0.0%	£5,458	0.1%
Nottinghamshire	1	0.0%	£3,961	0.0%	1	0.0%	£6,383	0.1%
Portsmouth	1	0.0%	£4,701	0.0%		0.0%		0.0%
South Gloucestershire		0.0%		0.0%	1	0.0%	£4,330	0.0%
Suffolk	2,285	96.5%	£9,504,901	96.4%	2,362	96.9%	£10,492,449	96.7%
Surrey	2	0.1%	£7,631	0.1%	2	0.1%	£8,046	0.1%
West Sussex		0.0%		0.0%	1	0.0%	£9,078	0.1%
Wokingham		0.0%		0.0%	1	0.0%	£5,248	0.0%
(blank)	9	0.4%	£45,234	0.5%	6	0.2%	£26,953	0.2%
<b>Grand Total</b>	<b>2,367</b>	<b>100.0%</b>	<b>£9,860,624</b>	<b>100.0%</b>	<b>2,437</b>	<b>100.0%</b>	<b>£10,847,701</b>	<b>100.0%</b>

# Suffolk County Council

LSC Suffolk  
LA Suffolk

Map 06/07 F05

Distribution of 16-18 FE Learners

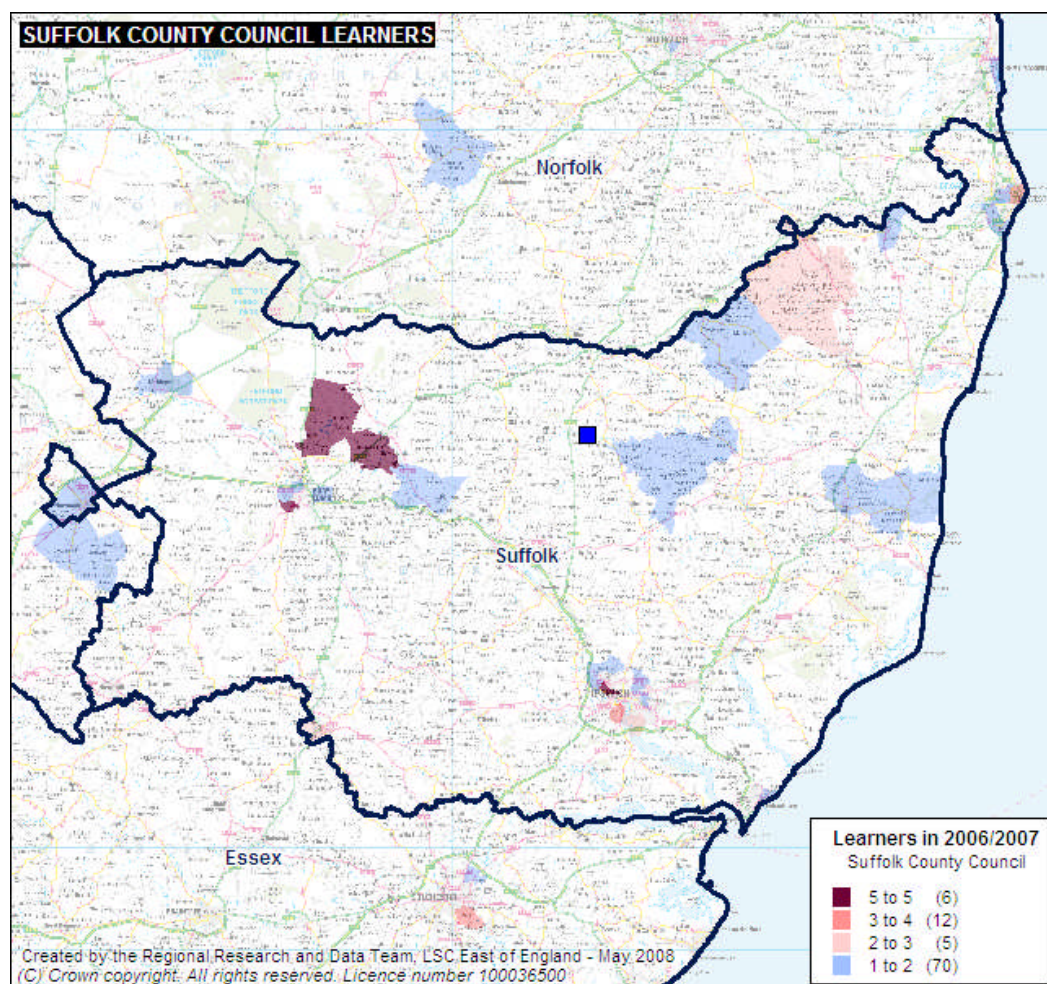


Table 06/07 & 07/08

16-18 FE Learners by district of learner

District	06/07 F05				07/08 F01			
	Learners		Funding		Learners		Funding	
	numbers	%	£	%	numbers	%	£	%
BABERGH	2	4%	£416	2%		0%		0%
FOREST HEATH	5	9%	£1,438	8%		0%		0%
IPSWICH	14	25%	£4,458	24%	2	33%	£931	34%
MID SUFFOLK	3	5%	£843	5%		0%		0%
Other	4	7%	£994	5%	2	33%	£845	31%
ST. EDMUNDSBURY	8	14%	£3,782	20%	1	17%	£427	16%
SUFFOLK COASTAL	3	5%	£1,017	5%		0%		0%
WAVENEY	13	23%	£4,073	22%		0%		0%
(blank)	4	7%	£1,556	8%	1	17%	£509	19%
<b>Grand Total</b>	<b>56</b>	<b>100%</b>	<b>£18,578</b>	<b>100%</b>	<b>6</b>	<b>100%</b>	<b>£2,711</b>	<b>100%</b>

**Table 06/07 & 07/08 16-18 FE Learners by Local Authority of learner**

Local Authority	06/07 F05				07/08 F01			
	Learners		Funding		Learners		Funding	
	numbers	%	£	%	numbers	%	£	%
Bury		0.0%		0.0%	1	16.7%	£427	15.7%
Cambridgeshire	1	1.8%	£196	1.1%		0.0%		0.0%
Flintshire		0.0%		0.0%	1	16.7%	£418	15.4%
Manchester	1	1.8%	£196	1.1%		0.0%		0.0%
Norfolk	1	1.8%	£196	1.1%		0.0%		0.0%
Nottinghamshire	1	1.8%	£408	2.2%		0.0%		0.0%
Suffolk	48	85.7%	£16,027	86.3%	3	50.0%	£1,357	50.1%
(blank)	4	7.1%	£1,556	8.4%	1	16.7%	£509	18.8%
<b>Grand Total</b>	<b>56</b>	<b>100.0%</b>	<b>£18,578</b>	<b>100.0%</b>	<b>6</b>	<b>100.0%</b>	<b>£2,711</b>	<b>100.0%</b>

# West Suffolk College

LSC Suffolk  
LA Suffolk

Map 06/07 F05

Distribution of 16-18 FE Learners

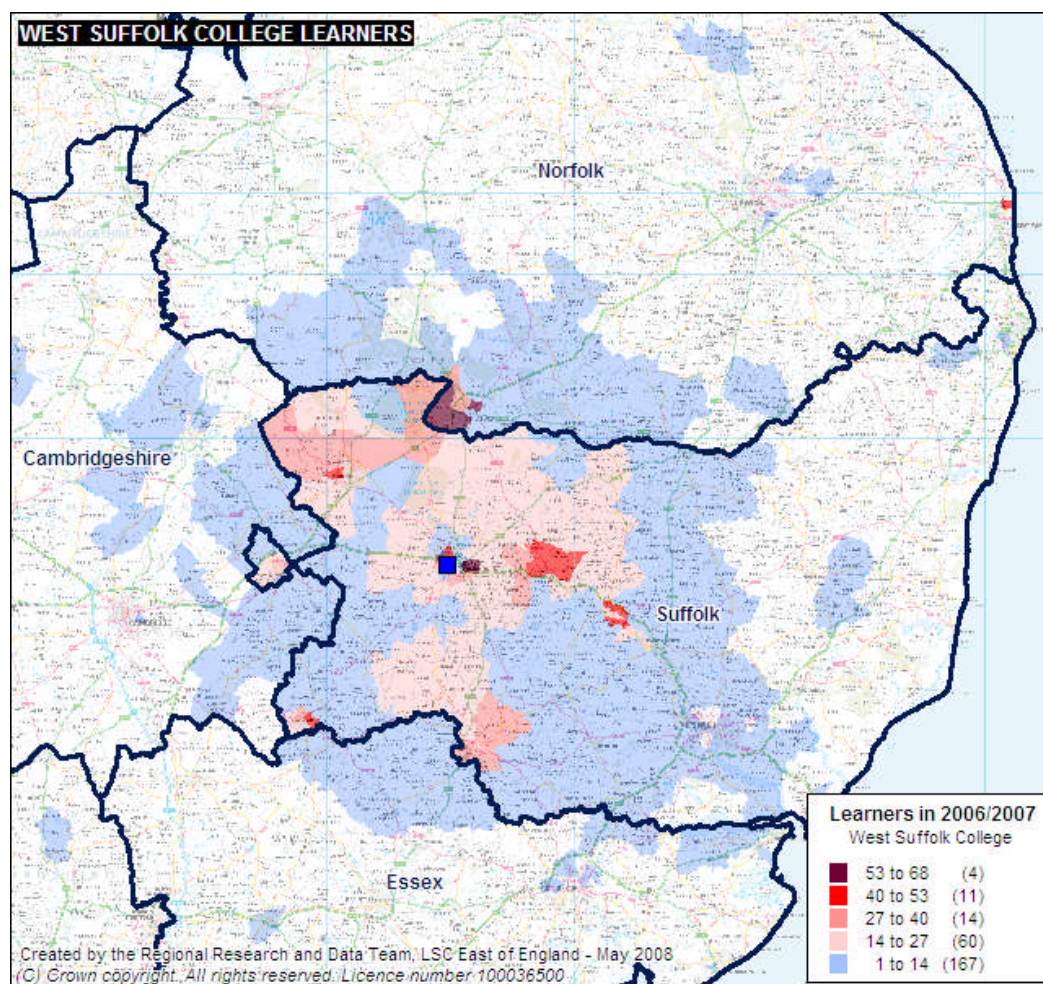


Table 06/07 & 07/08

16-18 FE Learners by district of learner

District	06/07 F05				07/08 F01			
	Learners		Funding		Learners		Funding	
	numbers	%	£	%	numbers	%	£	%
BABERGH	293	15%	£1,265,872	15%	298	15%	£1,305,269	15%
FOREST HEATH	254	13%	£1,074,485	13%	253	13%	£1,181,418	14%
IPSWICH	30	2%	£116,439	1%	15	1%	£74,293	1%
MID SUFFOLK	354	18%	£1,499,571	18%	353	18%	£1,552,941	18%
Other	288	15%	£1,216,745	15%	312	16%	£1,318,879	15%
ST. EDMUNDSBURY	709	36%	£3,048,814	37%	710	36%	£3,113,793	36%
SUFFOLK COASTAL	10	1%	£33,326	0%	7	0%	£20,043	0%
WAVENEY	1	0%	£437	0%		0%		0%
(blank)	12	1%	£60,249	1%	10	1%	£36,980	0%
<b>Grand Total</b>	<b>1,951</b>	<b>100%</b>	<b>£8,315,939</b>	<b>100%</b>	<b>1,958</b>	<b>100%</b>	<b>£8,603,616</b>	<b>100%</b>

**Table 06/07 & 07/08 16-18 FE Learners by Local Authority of learner**

Local Authority	06/07 F05				07/08 F01			
	Learners		Funding		Learners		Funding	
	numbers	%	£	%	numbers	%	£	%
Cambridgeshire	37	1.9%	£118,934	1.4%	52	2.7%	£187,471	2.2%
Derby	1	0.1%	£4,960	0.1%		0.0%		0.0%
Essex	33	1.7%	£121,692	1.5%	21	1.1%	£67,559	0.8%
Havering		0.0%		0.0%	1	0.1%	£5,020	0.1%
Hertfordshire	2	0.1%	£7,333	0.1%	3	0.2%	£5,545	0.1%
Lancashire	1	0.1%	£5,624	0.1%		0.0%		0.0%
Newham	1	0.1%	£4,981	0.1%		0.0%		0.0%
Norfolk	212	10.9%	£948,415	11.4%	234	12.0%	£1,052,831	12.2%
Northamptonshire		0.0%		0.0%	1	0.1%	£453	0.0%
Peterborough	1	0.1%	£4,806	0.1%		0.0%		0.0%
Suffolk	1,651	84.6%	£7,038,944	84.6%	1,636	83.6%	£7,247,757	84.2%
(blank)	12	0.6%	£60,249	0.7%	10	0.5%	£36,980	0.4%
<b>Grand Total</b>	<b>1,951</b>	<b>100.0%</b>	<b>£8,315,939</b>	<b>100.0%</b>	<b>1,958</b>	<b>100.0%</b>	<b>£8,603,616</b>	<b>100.0%</b>

# 2.1 LA Bedfordshire

Table 06/07 & 07/08 16-18 FE Learners by provider

Provider	06/07 F05				07/08 F01			
	Learners		Funding		Learners		Funding	
	numbers	%	£	%	numbers	%	£	%
(blank)		0.0%		0.0%	2	0.0%	£11,356	0.1%
Amersham and Wycombe College	3	0.1%	£15,586	0.1%	4	0.1%	£18,950	0.1%
Aylesbury College	27	0.5%	£80,957	0.5%	25	0.6%	£92,332	0.5%
Barnfield College	611	12.2%	£1,860,366	11.6%	484	11.3%	£1,930,271	10.8%
Bedford College	2,739	54.9%	£7,513,701	46.9%	2,127	49.7%	£8,477,637	47.6%
Bedfordshire County Council	54	1.1%	£18,710	0.1%	19	0.4%	£9,327	0.1%
Bicton College	1	0.0%	£4,694	0.0%		0.0%		0.0%
Bishop Burton College	1	0.0%	£7,506	0.0%		0.0%		0.0%
Bournemouth & Poole College		0.0%		0.0%	1	0.0%	£884	0.0%
Bridgwater College		0.0%		0.0%	10	0.2%	£3,135	0.0%
Brooklands College		0.0%		0.0%	1	0.0%	£4,558	0.0%
Cambridge Regional College	12	0.2%	£37,335	0.2%	7	0.2%	£22,081	0.1%
Capel Manor College	1	0.0%	£689	0.0%		0.0%		0.0%
Central Sussex College	2	0.0%	£16,664	0.1%		0.0%		0.0%
Chesterfield College	1	0.0%	£4,165	0.0%	1	0.0%	£7,887	0.0%
Cirencester College	2	0.0%	£8,448	0.1%		0.0%		0.0%
City and Islington College		0.0%		0.0%	2	0.0%	£7,881	0.0%
City College Brighton and Hove	1	0.0%	£4,211	0.0%		0.0%		0.0%
City of Westminster College		0.0%		0.0%	1	0.0%	£5,282	0.0%
College of North West London		0.0%		0.0%	3	0.1%	£25,622	0.1%
College of West Anglia	6	0.1%	£6,584	0.0%	2	0.0%	£10,523	0.1%
Derby College		0.0%		0.0%	4	0.1%	£4,808	0.0%
Dunstable College	673	13.5%	£2,667,036	16.6%	703	16.4%	£2,890,975	16.2%
Fareham College	1	0.0%	£6,015	0.0%	1	0.0%	£4,115	0.0%
Farnborough College of Technology		0.0%		0.0%	1	0.0%	£3,334	0.0%
Fashion Retail Academy	3	0.1%	£13,947	0.1%	9	0.2%	£41,264	0.2%
Great Yarmouth College of Further Education	1	0.0%	£1,432	0.0%		0.0%		0.0%
Greenwich Community College	1	0.0%	£873	0.0%		0.0%		0.0%
Guildford College of Further and Higher Education	2	0.0%	£15,753	0.1%		0.0%		0.0%
Hadlow College	1	0.0%	£7,465	0.0%		0.0%		0.0%
Harlow College	1	0.0%	£2,459	0.0%		0.0%		0.0%
Harrow College	2	0.0%	£11,019	0.1%		0.0%		0.0%
Hartpury College	2	0.0%	£15,103	0.1%	2	0.0%	£13,526	0.1%
Herefordshire College of Technology	1	0.0%	£7,168	0.0%		0.0%		0.0%
Hertford Regional College	5	0.1%	£7,282	0.0%	1	0.0%	£5,335	0.0%
Highbury College, Portsmouth		0.0%		0.0%	1	0.0%	£188	0.0%
Hills Road Sixth Form College	9	0.2%	£38,887	0.2%	7	0.2%	£33,331	0.2%
Huntingdonshire Regional College	7	0.1%	£12,668	0.1%	5	0.1%	£23,377	0.1%
Kensington and Chelsea College		0.0%		0.0%	2	0.0%	£3,331	0.0%
Kingston College	1	0.0%	£9,139	0.1%		0.0%		0.0%
Lambeth College		0.0%		0.0%	1	0.0%	£5,177	0.0%
Lancaster and Morecambe College	1	0.0%	£254	0.0%		0.0%		0.0%
Leeds College of Art and Design		0.0%		0.0%	1	0.0%	£5,882	0.0%
Leeds College of Building	1	0.0%	£480	0.0%		0.0%		0.0%
Leeds Metropolitan University	1	0.0%	£758	0.0%		0.0%		0.0%
Leicester College		0.0%		0.0%	4	0.1%	£14,280	0.1%
Lewisham College	1	0.0%	£4,882	0.0%		0.0%		0.0%
Lincoln College		0.0%		0.0%	1	0.0%	£5,328	0.0%
London Borough of Hounslow		0.0%		0.0%	1	0.0%	£651	0.0%
Long Road Sixth Form College	5	0.1%	£21,655	0.1%	9	0.2%	£39,653	0.2%
Loughborough College	1	0.0%	£141	0.0%		0.0%		0.0%
Luton Borough Council	2	0.0%	£470	0.0%	3	0.1%	£991	0.0%
Luton Sixth Form College	60	1.2%	£279,363	1.7%	71	1.7%	£318,370	1.8%
Manchester College of Arts and Technology	3	0.1%	£895	0.0%	2	0.0%	£291	0.0%
Mid-Kent College	2	0.0%	£4,676	0.0%		0.0%		0.0%
Milton Keynes College	209	4.2%	£815,746	5.1%	190	4.4%	£923,698	5.2%
Milton Keynes Council	2	0.0%	£1,580	0.0%	2	0.0%	£1,712	0.0%
Moulton College F.E.C	39	0.8%	£272,586	1.7%	39	0.9%	£357,342	2.0%

Provider	06/07 F05				07/08 F01			
	Learners		Funding		Learners		Funding	
	numbers	%	£	%	numbers	%	£	%
Myerscough College		0.0%		0.0%	1	0.0%	£5,770	0.0%
New College, Nottingham	1	0.0%	£5,547	0.0%		0.0%		0.0%
Newbury College	1	0.0%	£1,950	0.0%		0.0%		0.0%
Newcastle-under-Lyme College	3	0.1%	£1,361	0.0%		0.0%		0.0%
North Hertfordshire College	241	4.8%	£963,120	6.0%	263	6.1%	£1,080,915	6.1%
North West Kent College of Technology	1	0.0%	£111	0.0%		0.0%		0.0%
Northampton College	5	0.1%	£16,679	0.1%	10	0.2%	£38,693	0.2%
Oaklands College	27	0.5%	£117,536	0.7%	42	1.0%	£225,500	1.3%
Oxford and Cherwell College	2	0.0%	£6,154	0.0%		0.0%		0.0%
Paston College		0.0%		0.0%	1	0.0%	£3,976	0.0%
Peterborough City Council		0.0%		0.0%	1	0.0%	£174	0.0%
Peterborough Regional College	1	0.0%	£4,124	0.0%	1	0.0%	£2,290	0.0%
Plymouth College of Art and Design		0.0%		0.0%	1	0.0%	£7,066	0.0%
Pre-school Learning Alliance		0.0%		0.0%	1	0.0%	£1,280	0.0%
Preston College		0.0%		0.0%	1	0.0%	£2,527	0.0%
Reaseheath College		0.0%		0.0%	1	0.0%	£5,975	0.0%
Redbridge College	1	0.0%	£4,445	0.0%	1	0.0%	£3,136	0.0%
Richmond upon Thames College	1	0.0%	£4,921	0.0%		0.0%		0.0%
South Birmingham College		0.0%		0.0%	1	0.0%	£6,548	0.0%
South Devon College		0.0%		0.0%	1	0.0%	£4,823	0.0%
South Tyneside College		0.0%		0.0%	1	0.0%	£5,795	0.0%
Southgate College		0.0%		0.0%	1	0.0%	£2,027	0.0%
Sparsholt College, Hampshire	2	0.0%	£13,477	0.1%	1	0.0%	£3,312	0.0%
Stamford College		0.0%		0.0%	1	0.0%	£3,220	0.0%
Stanmore College	2	0.0%	£11,149	0.1%	2	0.0%	£10,741	0.1%
Suffolk College	3	0.1%	£12,738	0.1%	1	0.0%	£5,754	0.0%
Sussex Downs College	1	0.0%	£4,707	0.0%	1	0.0%	£5,635	0.0%
Sutton Coldfield College	1	0.0%	£250	0.0%		0.0%		0.0%
Tresham Institute	2	0.0%	£8,574	0.1%	7	0.2%	£25,431	0.1%
Walsall College of Arts and Technology	1	0.0%	£621	0.0%	1	0.0%	£1,290	0.0%
Warwickshire College, Royal Leamington Spa, Buckly	2	0.0%	£8,752	0.1%	2	0.0%	£1,224	0.0%
West Herts College	11	0.2%	£45,934	0.3%	7	0.2%	£35,811	0.2%
West Nottinghamshire College	1	0.0%	£2,780	0.0%		0.0%		0.0%
Workers' Educational Association	3	0.1%	£1,295	0.0%	2	0.0%	£1,208	0.0%
Writtle College	177	3.5%	£985,038	6.1%	176	4.1%	£983,936	5.5%
Yeovil College		0.0%		0.0%	1	0.0%	£4,993	0.0%
<b>Grand Total</b>	<b>4,988</b>	<b>100.0%</b>	<b>£16,020,607</b>	<b>100.0%</b>	<b>4,279</b>	<b>100.0%</b>	<b>£17,803,737</b>	<b>100.0%</b>

## 2.2 LA Luton

Table 06/07 & 07/08 16-18 FE Learners by provider

Provider	06/07 F05				07/08 F01			
	Learners		Funding		Learners		Funding	
	numbers	%	£	%	numbers	%	£	%
(blank)	1	0.0%	£3,973	0.0%		0.0%		0.0%
Amersham and Wycombe College		0.0%		0.0%	1	0.0%	£3,771	0.0%
Aylesbury College	4	0.1%	£7,058	0.0%	4	0.1%	£7,103	0.0%
Barnet College	3	0.1%	£14,177	0.1%	2	0.0%	£8,347	0.0%
Barnfield College	2,140	44.5%	£8,263,509	42.5%	2,051	43.3%	£8,812,165	42.3%
Bedford College	254	5.3%	£567,199	2.9%	139	2.9%	£630,937	3.0%
Bedfordshire County Council	12	0.2%	£2,853	0.0%	3	0.1%	£2,090	0.0%
Boston College		0.0%		0.0%	1	0.0%	£3,468	0.0%
Bradford College		0.0%		0.0%	1	0.0%	£4,172	0.0%
Capel Manor College	1	0.0%	£7,839	0.0%		0.0%		0.0%
City and Islington College		0.0%		0.0%	1	0.0%	£6,770	0.0%
City of Bristol College	1	0.0%	£226	0.0%		0.0%		0.0%
City of Westminster College	2	0.0%	£9,009	0.0%	1	0.0%	£4,452	0.0%
College of North West London	3	0.1%	£5,875	0.0%	2	0.0%	£9,210	0.0%
Cornwall College	1	0.0%	£337	0.0%		0.0%		0.0%
Croydon College	1	0.0%	£5,363	0.0%		0.0%		0.0%
Derby College	2	0.0%	£1,054	0.0%	1	0.0%	£1,202	0.0%
Dunstable College	348	7.2%	£1,359,248	7.0%	394	8.3%	£1,523,634	7.3%
Ealing , Hammersmith and West London College	3	0.1%	£15,143	0.1%	2	0.0%	£8,512	0.0%
East Durham & Houghall Community College	1	0.0%	£4,909	0.0%		0.0%		0.0%
East Norfolk Sixth Form College		0.0%		0.0%	1	0.0%	£4,907	0.0%
Easton College		0.0%		0.0%	1	0.0%	£8,153	0.0%
Enfield College	2	0.0%	£6,589	0.0%	1	0.0%	£2,904	0.0%
Fareham College	1	0.0%	£1,932	0.0%		0.0%		0.0%
Fashion Retail Academy		0.0%		0.0%	4	0.1%	£16,404	0.1%
Great Yarmouth College of Further Education		0.0%		0.0%	1	0.0%	£4,872	0.0%
Hackney Community College	1	0.0%	£3,257	0.0%		0.0%		0.0%
Harrow College	1	0.0%	£4,545	0.0%		0.0%		0.0%
Hartpury College	2	0.0%	£8,804	0.0%	1	0.0%	£5,851	0.0%
Hertford Regional College	1	0.0%	£5,299	0.0%	1	0.0%	£5,497	0.0%
Kingston College	1	0.0%	£108	0.0%		0.0%		0.0%
Lambeth College	1	0.0%	£270	0.0%		0.0%		0.0%
Loughborough College	1	0.0%	£252	0.0%	3	0.1%	£12,004	0.1%
Luton Borough Council	19	0.4%	£6,577	0.0%	16	0.3%	£7,065	0.0%
Luton Sixth Form College	1,812	37.7%	£8,432,905	43.3%	1,941	40.9%	£8,927,573	42.9%
Merton College	1	0.0%	£6,218	0.0%	1	0.0%	£6,454	0.0%
Milton Keynes College	4	0.1%	£9,059	0.0%	3	0.1%	£9,624	0.0%
Milton Keynes Council		0.0%		0.0%	1	0.0%	£2,004	0.0%
Moulton College F.E.C	1	0.0%	£6,484	0.0%	1	0.0%	£9,760	0.0%
Newcastle College		0.0%		0.0%	1	0.0%	£3,665	0.0%
Newcastle-under-Lyme College	1	0.0%	£213	0.0%		0.0%		0.0%
Newham College of Further Education	1	0.0%	£794	0.0%	1	0.0%	£8,764	0.0%
North Hertfordshire College	75	1.6%	£275,458	1.4%	62	1.3%	£266,328	1.3%
Norwich City College of Further and Higher Education		0.0%		0.0%	1	0.0%	£4,417	0.0%
Oaklands College	56	1.2%	£224,393	1.2%	51	1.1%	£241,711	1.2%
Pershore Group of Colleges	1	0.0%	£8,259	0.0%		0.0%		0.0%
Pre-school Learning Alliance	1	0.0%	£1,234	0.0%		0.0%		0.0%
Preston College		0.0%		0.0%	1	0.0%	£3,847	0.0%
Sheffield College		0.0%		0.0%	1	0.0%	£941	0.0%
Southgate College	1	0.0%	£1,568	0.0%		0.0%		0.0%
Sparsholt College, Hampshire	1	0.0%	£7,220	0.0%	1	0.0%	£7,198	0.0%
St Dominic's Sixth Form College		0.0%		0.0%	2	0.0%	£10,084	0.0%
St Francis Xavier Sixth Form College	1	0.0%	£5,314	0.0%	1	0.0%	£4,345	0.0%
Telford College of Arts and Technology	1	0.0%	£1,854	0.0%		0.0%		0.0%
The Sixth Form College Brooke House	1	0.0%	£4,940	0.0%	1	0.0%	£4,735	0.0%
Warwickshire College, Royal Leamington Spa, Rugby	1	0.0%	£928	0.0%	1	0.0%	£7,917	0.0%
West Herts College	8	0.2%	£20,444	0.1%	6	0.1%	£24,379	0.1%
West Thames College	1	0.0%	£4,089	0.0%		0.0%		0.0%

Provider	06/07 F05				07/08 F01			
	Learners		Funding		Learners		Funding	
	numbers	%	£	%	numbers	%	£	%
Westminster Kingsway College	1	0.0%	£2,421	0.0%		0.0%		0.0%
Workers' Educational Association	2	0.0%	£368	0.0%		0.0%		0.0%
Writtle College	26	0.5%	£137,037	0.7%	31	0.7%	£173,082	0.8%
<b>Grand Total</b>	<b>4,804</b>	<b>100.0%</b>	<b>£19,456,608</b>	<b>100.0%</b>	<b>4,740</b>	<b>100.0%</b>	<b>£20,810,318</b>	<b>100.0%</b>

## 2.3 LA Cambridgeshire

Table 06/07 & 07/08 16-18 FE Learners by provider

Provider	06/07 F05				07/08 F01			
	Learners		Funding		Learners		Funding	
	numbers	%	£	%	numbers	%	£	%
A4E Ltd	1	0.0%		0.0%		0.0%		0.0%
Access to Music	1	0.0%	£5,209			0.0%		0.0%
Askham Bryan College		0.0%		0.0%	1	0.0%	£1,540	0.0%
Barnfield College	3	0.0%	£6,868	0.0%	2	0.0%	£1,522	0.0%
Bedford College	175	1.7%	£460,629	1.3%	123	1.5%	£522,758	1.3%
Bedfordshire County Council		0.0%		0.0%	1	0.0%	£271	0.0%
Boston College		0.0%		0.0%	1	0.0%	£4,444	0.0%
Bournemouth & Poole College		0.0%		0.0%	2	0.0%	£7,938	0.0%
Bridgwater College		0.0%		0.0%	2	0.0%	£7,194	0.0%
Brockenhurst College	1	0.0%	£4,938	0.0%	1	0.0%	£5,466	0.0%
Brooksbys Melton College	1	0.0%	£5,732	0.0%		0.0%		0.0%
Broxtowe College, Nottingham	1	0.0%	£5,524	0.0%		0.0%		0.0%
Bury College		0.0%			2	0.0%	£8,639	0.0%
Cambridge Regional College	3,429	34.1%	£10,795,292	29.3%	2,333	27.5%	£11,879,163	30.7%
Cambridge Women's Resources Centre	1	0.0%	£343	0.0%		0.0%		0.0%
Cambridgeshire County Council	1	0.0%	£1,229	0.0%	1	0.0%	£502	0.0%
Capel Manor College	1	0.0%	£1,378	0.0%	1	0.0%	£3,252	0.0%
Central Sussex College	1	0.0%	£8,332	0.0%		0.0%		0.0%
Chichester College	1	0.0%	£3,377	0.0%		0.0%		0.0%
Cirencester College		0.0%		0.0%	1	0.0%	£4,735	0.0%
City College Brighton and Hove		0.0%		0.0%	1	0.0%	£4,009	0.0%
City of Bath College	2	0.0%	£5,881	0.0%		0.0%		0.0%
City of Bristol College	1	0.0%	£517	0.0%	2	0.0%	£10,077	0.0%
City of Stoke-on-Trent Sixth Form College		0.0%		0.0%	1	0.0%	£4,519	0.0%
Cleveland College of Art and Design	1	0.0%	£5,542	0.0%		0.0%		0.0%
Colchester Institute	1	0.0%	£2,214	0.0%	1	0.0%	£3,879	0.0%
College of North East London	1	0.0%	£614	0.0%		0.0%		0.0%
College of North West London	1	0.0%	£3,829	0.0%		0.0%		0.0%
College of West Anglia	1,047	10.4%	£4,877,317	13.3%	940	11.1%	£4,919,941	12.7%
Cornwall College	2	0.0%	£4,031	0.0%		0.0%		0.0%
Croydon College	1	0.0%	£5,363	0.0%		0.0%		0.0%
Derby College	4	0.0%	£4,923	0.0%		0.0%		0.0%
Doncaster College	1	0.0%	£5,980	0.0%		0.0%		0.0%
Ealing, Hammersmith and West London College		0.0%		0.0%	1	0.0%	£784	0.0%
Easton College		0.0%		0.0%	1	0.0%	£6,029	0.0%
Fashion Retail Academy	1	0.0%	£1,316	0.0%	2	0.0%	£9,291	0.0%
Filton College		0.0%		0.0%	1	0.0%	£5,337	0.0%
Grantham College		0.0%		0.0%	1	0.0%	£4,240	0.0%
Great Yarmouth College of Further Education	1	0.0%	£4,302	0.0%	1	0.0%	£3,886	0.0%
Guildford College of Further and Higher Education	2	0.0%	£18,904	0.1%	1	0.0%	£9,184	0.0%
Hartow College	2	0.0%	£9,457	0.0%		0.0%		0.0%
Hartpury College	1	0.0%	£8,774	0.0%	4	0.0%	£31,196	0.1%
Havering College of Further and Higher Education	1	0.0%	£3,885	0.0%		0.0%		0.0%
Henley College Coventry	1	0.0%	£294	0.0%		0.0%		0.0%
Herefordshire College of Technology	1	0.0%	£7,168	0.0%		0.0%		0.0%
Hertford Regional College	3	0.0%	£6,667	0.0%	3	0.0%	£17,263	0.0%
Hills Road Sixth Form College	1,726	17.1%	£7,265,260	19.8%	1,671	19.7%	£7,528,397	19.4%
Huddersfield New College	1	0.0%	£3,941	0.0%		0.0%		0.0%
Huntingdonshire Regional College	789	7.8%	£2,303,452	6.3%	668	7.9%	£2,413,859	6.2%
Lambeth College		0.0%		0.0%	1	0.0%	£3,510	0.0%
Leeds College of Art and Design	2	0.0%	£9,656	0.0%	2	0.0%	£9,667	0.0%
Leeds College of Music	1	0.0%	£1,601	0.0%		0.0%		0.0%
Leicester College	3	0.0%	£2,801	0.0%	1	0.0%	£1,254	0.0%
Lincoln College		0.0%		0.0%	2	0.0%	£8,240	0.0%
Liverpool Community College	1	0.0%	£1,090	0.0%		0.0%		0.0%
Long Road Sixth Form College	1,837	18.2%	£7,452,384	20.3%	1,786	21.1%	£7,661,297	19.8%
Loughborough College		0.0%		0.0%	1	0.0%	£3,389	0.0%
Manchester College of Arts and Technology	4	0.0%	£562	0.0%	1	0.0%	£1,179	0.0%

Provider	06/07 F05				07/08 F01			
	Learners		Funding		Learners		Funding	
	numbers	%	£	%	numbers	%	£	%
Merton College	2	0.0%	£1,050	0.0%		0.0%		0.0%
Middlesbrough College	1	0.0%	£5,731	0.0%		0.0%		0.0%
Milton Keynes College		0.0%		0.0%	1	0.0%	£4,034	0.0%
Moulton College F.E.C	14	0.1%	£86,631	0.2%	20	0.2%	£124,446	0.3%
New College, Swindon		0.0%		0.0%	1	0.0%	£5,162	0.0%
Newcastle-under-Lyme College	5	0.0%	£1,103	0.0%		0.0%		0.0%
Norfolk County Council	3	0.0%	£308	0.0%		0.0%		0.0%
North Hertfordshire College	16	0.2%	£33,601	0.1%	16	0.2%	£60,429	0.2%
North West Kent College of Technology		0.0%		0.0%	1	0.0%	£215	0.0%
Northampton College	1	0.0%	£1,501	0.0%	1	0.0%	£1,558	0.0%
Northern School of Contemporary Dance	1	0.0%	£3,246	0.0%		0.0%		0.0%
Norwich City College of Further and Higher Education	4	0.0%	£10,921	0.0%	5	0.1%	£20,446	0.1%
Oaklands College	4	0.0%	£23,224	0.1%	1	0.0%	£4,832	0.0%
Otley College of Agriculture and Horticulture	11	0.1%	£11,191	0.0%	1	0.0%	£6,056	0.0%
Oxford and Cherwell College	1	0.0%	£436	0.0%		0.0%		0.0%
Paston College		0.0%		0.0%	1	0.0%	£4,554	0.0%
Peter Symonds' College	1	0.0%	£4,685	0.0%		0.0%		0.0%
Peterborough City Council	42	0.4%	£16,529	0.0%	23	0.3%	£6,400	0.0%
Peterborough Regional College	730	7.3%	£2,578,990	7.0%	630	7.4%	£2,493,561	6.4%
Plumpton College	1	0.0%	£6,775	0.0%	1	0.0%	£7,027	0.0%
Portsmouth College	1	0.0%	£5,230	0.0%		0.0%		0.0%
Preston College		0.0%		0.0%	3	0.0%	£8,735	0.0%
Reaseheath College	5	0.0%	£23,985	0.1%	3	0.0%	£16,599	0.0%
Richmond upon Thames College		0.0%		0.0%	1	0.0%	£1,306	0.0%
Sheffield College		0.0%		0.0%	1	0.0%	£4,890	0.0%
South Downs College	1	0.0%	£5,336	0.0%		0.0%		0.0%
South East Derbyshire College	1	0.0%	£1,862	0.0%		0.0%		0.0%
South East Essex College of Arts and Technology	1	0.0%	£316	0.0%		0.0%		0.0%
South Leicestershire College	1	0.0%	£6,976	0.0%		0.0%		0.0%
Southgate College	2	0.0%	£6,436	0.0%		0.0%		0.0%
Sparsholt College, Hampshire	2	0.0%	£16,653	0.0%	4	0.0%	£18,971	0.0%
Stamford College	61	0.6%	£221,314	0.6%	57	0.7%	£221,126	0.6%
Stoke-on-Trent College	1	0.0%	£178	0.0%		0.0%		0.0%
Strode's College		0.0%		0.0%	1	0.0%	£5,375	0.0%
Suffolk College		0.0%		0.0%	1	0.0%	£972	0.0%
Suffolk County Council	1	0.0%	£196	0.0%		0.0%		0.0%
Sussex Downs College	1	0.0%	£4,412	0.0%		0.0%		0.0%
Telford College of Arts and Technology		0.0%		0.0%	1	0.0%	£1,301	0.0%
Thames Valley University	2	0.0%	£8,074	0.0%		0.0%		0.0%
The London College of Beauty Therapy Ltd	1	0.0%	£2,302	0.0%		0.0%		0.0%
Totton College		0.0%		0.0%	1	0.0%	£3,909	0.0%
Tresham Institute	3	0.0%	£5,871	0.0%	7	0.1%	£9,695	0.0%
Walsall College of Arts and Technology	1	0.0%	£5,674	0.0%		0.0%		0.0%
Warwickshire College, Royal Leamington Spa, Rugby	2	0.0%	£13,418	0.0%	1	0.0%	£6,867	0.0%
West Herts College		0.0%		0.0%	1	0.0%	£4,762	0.0%
West Nottinghamshire College	4	0.0%	£2,495	0.0%	3	0.0%	£3,888	0.0%
West Suffolk College	37	0.4%	£118,934	0.3%	52	0.6%	£187,471	0.5%
Westminster Kingsway College	1	0.0%	£534	0.0%		0.0%		0.0%
Wiltshire College		0.0%		0.0%	1	0.0%	£867	0.0%
Wirral Metropolitan College	2	0.0%	£813	0.0%		0.0%		0.0%
Worcester College of Technology		0.0%		0.0%	1	0.0%	£710	0.0%
Workers' Educational Association	2	0.0%	£286	0.0%		0.0%		0.0%
Writtle College	41	0.4%	£225,204	0.6%	71	0.8%	£385,097	1.0%
Yeovil College	1	0.0%	£4,812	0.0%		0.0%		0.0%
<b>Grand Total</b>	<b>10,068</b>	<b>100.0%</b>	<b>£36,783,811</b>	<b>100.0%</b>	<b>8,476</b>	<b>100.0%</b>	<b>£38,729,113</b>	<b>100.0%</b>

## 2.4 LA Peterborough

**Table 06/07 & 07/08 16-18 FE Learners by provider**

Provider	06/07 F05				07/08 F01			
	Learners		Funding		Learners		Funding	
	numbers	%	£	%	numbers	%	£	%
Barnfield College	2	0.1%	£4,224	0.1%		0.0%		0.0%
Boston College		0.0%		0.0%	3	0.2%	£8,113	0.1%
City of Bristol College		0.0%		0.0%	1	0.1%	£5,039	0.1%
Derby College	1	0.0%	£142	0.0%	3	0.2%	£5,787	0.1%
Fashion Retail Academy		0.0%		0.0%	1	0.1%	£4,101	0.1%
Kingston College	1	0.0%	£5,629	0.1%		0.0%		0.0%
Lambeth College	1	0.0%	£6,554	0.1%		0.0%		0.0%
Loughborough College	5	0.2%	£1,259	0.0%		0.0%		0.0%
Moulton College F.E.C	13	0.6%	£56,120	0.8%	5	0.3%	£38,683	0.5%
Newcastle-under-Lyme College	1	0.0%	£121	0.0%		0.0%		0.0%
Newham College of Further Education		0.0%		0.0%	1	0.1%	£2,026	0.0%
North Hertfordshire College	4	0.2%	£4,798	0.1%	3	0.2%	£7,000	0.1%
Norwich City College of Further and Higher Education	1	0.0%	£5,931	0.1%	1	0.1%	£2,843	0.0%
Pre-school Learning Alliance	3	0.1%	£1,519	0.0%		0.0%		0.0%
Southgate College	1	0.0%	£5,389	0.1%		0.0%		0.0%
Sparsholt College, Hampshire	1	0.0%	£7,194	0.1%	1	0.1%	£4,138	0.1%
Workers' Educational Association	1	0.0%	£388	0.0%		0.0%		0.0%
Writtle College	2	0.1%	£8,175	0.1%	1	0.1%	£6,309	0.1%
Bishop Burton College		0.0%		0.0%	1	0.1%	£6,958	0.1%
Bournemouth & Poole College		0.0%		0.0%	2	0.1%	£5,534	0.1%
Cambridge Regional College	21	1.0%	£69,810	0.9%	2	0.1%	£10,818	0.1%
Chesterfield College	1	0.0%	£1,488	0.0%		0.0%		0.0%
College of West Anglia	69	3.1%	£275,905	3.7%	51	2.6%	£271,303	3.7%
Guildford College of Further and Higher Education	2	0.1%	£12,140	0.2%		0.0%		0.0%
Harlow College		0.0%		0.0%	1	0.1%	£2,752	0.0%
Huntingdonshire Regional College	30	1.4%	£38,180	0.5%	11	0.6%	£25,640	0.3%
Kensington and Chelsea College	1	0.0%	£607	0.0%		0.0%		0.0%
Leeds College of Art and Design	2	0.1%	£11,344	0.2%		0.0%		0.0%
Leeds Metropolitan University	1	0.0%	£436	0.0%		0.0%		0.0%
Long Road Sixth Form College		0.0%		0.0%	1	0.1%	£4,766	0.1%
Manchester College of Arts and Technology		0.0%		0.0%	1	0.1%	£437	0.0%
New College, Nottingham	1	0.0%	£3,154	0.0%		0.0%		0.0%
Northampton College	7	0.3%	£2,472	0.0%	1	0.1%	£827	0.0%
Peterborough City Council	117	5.3%	£63,390	0.9%	33	1.7%	£22,454	0.3%
Peterborough Regional College	1,611	73.3%	£5,620,956	75.6%	1,465	75.4%	£5,506,862	74.6%
Stamford College	276	12.6%	£1,166,481	15.7%	335	17.2%	£1,382,870	18.7%
Tresham Institute	5	0.2%	£9,155	0.1%	8	0.4%	£13,580	0.2%
Colchester Institute	1	0.0%	£4,250	0.1%		0.0%		0.0%
Otley College of Agriculture and Horticulture	1	0.0%	£685	0.0%	1	0.1%	£1,406	0.0%
West Suffolk College	1	0.0%	£4,806	0.1%		0.0%		0.0%
Brooksby Melton College	1	0.0%	£6,683	0.1%	7	0.4%	£31,098	0.4%
Broxtowe College, Nottingham	4	0.2%	£11,346	0.2%	1	0.1%	£2,133	0.0%
Building Crafts College	1	0.0%	£2,414	0.0%		0.0%		0.0%
Reigate College	1	0.0%	£5,356	0.1%		0.0%		0.0%
City College, Manchester		0.0%		0.0%	1	0.1%	£1,272	0.0%
South Nottingham College	2	0.1%	£265	0.0%		0.0%		0.0%
Grantham College	2	0.1%	£507	0.0%	2	0.1%	£3,688	0.0%
University of Derby, High Peak College	1	0.0%	£4,796	0.1%		0.0%		0.0%
Blackburn College	1	0.0%	£5,341	0.1%		0.0%		0.0%
Tameside College	1	0.0%	£1,507	0.0%		0.0%		0.0%
Morley College	1	0.0%	£313	0.0%		0.0%		0.0%
<b>Grand Total</b>	<b>2,199</b>	<b>100.0%</b>	<b>£7,431,232</b>	<b>100.0%</b>	<b>1,944</b>	<b>100.0%</b>	<b>£7,378,436</b>	<b>100.0%</b>

## 2.5 LA Essex

Table 06/07 & 07/08 16-18 FE Learners by provider

Provider	06/07 F05				07/08 F01			
	Learners		Funding		Learners		Funding	
	numbers	%	£	%	numbers	%	£	%
(blank)	2	0.0%	£7,946	0.0%	5	0.0%	£26,461	0.0%
Access to Music	37	0.2%	£179,603	0.2%	29	0.2%	£145,766	0.2%
Amersham and Wycombe College	1	0.0%	£2,055	0.0%		0.0%		0.0%
Barking College	61	0.3%	£186,483	0.2%	72	0.4%	£305,218	0.4%
Barnet College	8	0.0%	£23,748	0.0%	3	0.0%	£9,715	0.0%
Barnfield College	4	0.0%	£2,432	0.0%		0.0%		0.0%
Bedford College	9	0.0%	£7,319	0.0%	10	0.1%	£11,967	0.0%
Bicton College		0.0%		0.0%	1	0.0%	£192	0.0%
Bishop Burton College		0.0%		0.0%	1	0.0%	£6,958	0.0%
Blackburn College	1	0.0%	£7,345	0.0%		0.0%		0.0%
Blackpool and The Fylde College		0.0%		0.0%	1	0.0%	£5,953	0.0%
Boston College		0.0%		0.0%	1	0.0%	£3,753	0.0%
Braintree College	1,359	7.3%	£4,848,557	6.4%	1,057	5.8%	£4,328,961	5.6%
Brockenhurst College		0.0%		0.0%	1	0.0%	£4,359	0.0%
Bromley College of Further and Higher Education	1	0.0%	£4,234	0.0%		0.0%		0.0%
Brooklands College	2	0.0%	£3,344	0.0%	1	0.0%	£5,568	0.0%
Building Crafts College	3	0.0%	£6,303	0.0%	1	0.0%	£1,848	0.0%
Cambridge Regional College	340	1.8%	£1,246,896	1.6%	251	1.4%	£1,300,411	1.7%
Canterbury College		0.0%		0.0%	1	0.0%	£5,061	0.0%
Capel Manor College	29	0.2%	£160,813	0.2%	27	0.1%	£131,135	0.2%
Central Sussex College	2	0.0%	£16,664	0.0%		0.0%		0.0%
Chelmsford College	1,591	8.6%	£6,473,098	8.5%	1,642	9.0%	£6,827,344	8.8%
Chesterfield College	1	0.0%	£486	0.0%		0.0%		0.0%
Chichester College	1	0.0%	£2,129	0.0%	1	0.0%	£872	0.0%
Christ the King Sixth Form College	1	0.0%	£6,128	0.0%	1	0.0%	£5,294	0.0%
City and Islington College	6	0.0%	£17,986	0.0%	6	0.0%	£29,761	0.0%
City College Brighton and Hove	1	0.0%	£5,819	0.0%		0.0%		0.0%
City Literary Institute (The)	5	0.0%	£2,083	0.0%	2	0.0%	£834	0.0%
City of Bath College	2	0.0%	£3,367	0.0%		0.0%		0.0%
City of Bristol College	1	0.0%	£870	0.0%	7	0.0%	£13,954	0.0%
City of Westminster College	13	0.1%	£52,809	0.1%	8	0.0%	£45,408	0.1%
Colchester Institute	2,947	15.8%	£11,813,614	15.5%	2,840	15.6%	£9,759,730	12.6%
College of North East London	16	0.1%	£24,015	0.0%	2	0.0%	£4,097	0.0%
College of North West London	1	0.0%	£1,320	0.0%	2	0.0%	£12,209	0.0%
College of West Anglia	28	0.2%	£49,072	0.1%	32	0.2%	£73,670	0.1%
Cornwall College	2	0.0%	£12,690	0.0%	2	0.0%	£10,021	0.0%
Croydon College	2	0.0%	£5,368	0.0%	4	0.0%	£13,731	0.0%
Derby College	4	0.0%	£4,603	0.0%	3	0.0%	£3,005	0.0%
Ealing, Hammersmith and West London College	4	0.0%	£9,046	0.0%	3	0.0%	£7,112	0.0%
East Berkshire College	1	0.0%	£9,460	0.0%	1	0.0%	£4,850	0.0%
East Durham & Houghall Community College	1	0.0%	£6,575	0.0%		0.0%		0.0%
Easton College	3	0.0%	£29,421	0.0%	1	0.0%	£12,281	0.0%
Enfield College	15	0.1%	£33,369	0.0%	3	0.0%	£10,706	0.0%
Epping Forest College	450	2.4%	£1,734,987	2.3%	467	2.6%	£2,059,836	2.7%
Esher College		0.0%		0.0%	1	0.0%	£5,181	0.0%
Essex County Council	579	3.1%	£344,581	0.5%	433	2.4%	£333,294	0.4%
Fashion Retail Academy	16	0.1%	£73,682	0.1%	31	0.2%	£143,994	0.2%
Filton College	1	0.0%	£5,713	0.0%		0.0%		0.0%
Great Yarmouth College of Further Education	1	0.0%	£141	0.0%		0.0%		0.0%
Greenwich Community College	4	0.0%	£22,731	0.0%	2	0.0%	£11,211	0.0%
Grimsby Institute of Further & Higher Education	1	0.0%	£49	0.0%		0.0%		0.0%
Guildford College of Further and Higher Education	3	0.0%	£23,662	0.0%	3	0.0%	£15,138	0.0%
Hackney Community College	4	0.0%	£14,114	0.0%	4	0.0%	£12,103	0.0%
Hadlow College	2	0.0%	£15,409	0.0%	1	0.0%	£7,031	0.0%
Harlow College	1,852	10.0%	£8,209,886	10.8%	1,903	10.5%	£8,845,786	11.4%
Harrow College	1	0.0%	£480	0.0%		0.0%		0.0%
Hartpury College	4	0.0%	£17,752	0.0%	1	0.0%	£6,038	0.0%
Harving College of Further and Higher Education	183	1.0%	£761,455	1.0%	182	1.0%	£930,572	1.2%

Provider	06/07 F05				07/08 F01			
	Learners		Funding		Learners		Funding	
	numbers	%	£	%	numbers	%	£	%
Havering Sixth Form College	31	0.2%	£152,722	0.2%	21	0.1%	£104,672	0.1%
Henley College Coventry		0.0%		0.0%	2	0.0%	£5,034	0.0%
Herefordshire College of Technology	1	0.0%	£7,007	0.0%	1	0.0%	£6,097	0.0%
Hertford Regional College	261	1.4%	£1,124,093	1.5%	228	1.3%	£1,038,491	1.3%
Hills Road Sixth Form College	23	0.1%	£86,658	0.1%	25	0.1%	£102,279	0.1%
Huntingdonshire Regional College		0.0%		0.0%	1	0.0%	£4,402	0.0%
John Ruskin College	3	0.0%	£6,121	0.0%		0.0%		0.0%
Kensington and Chelsea College	1	0.0%	£1,132	0.0%		0.0%		0.0%
Kingston College	1	0.0%	£6,419	0.0%	1	0.0%	£1,051	0.0%
Lambeth College		0.0%		0.0%	1	0.0%	£3,510	0.0%
Leeds College of Building	1	0.0%	£569	0.0%	2	0.0%	£1,962	0.0%
Leicester College	16	0.1%	£15,465	0.0%	2	0.0%	£1,635	0.0%
Lewisham College		0.0%		0.0%	1	0.0%	£3,982	0.0%
Leyton Sixth Form College	4	0.0%	£14,077	0.0%	5	0.0%	£24,799	0.0%
Lincoln College		0.0%		0.0%	1	0.0%	£5,008	0.0%
London Borough of Havering	1	0.0%	£205	0.0%	1	0.0%	£448	0.0%
London Borough of Redbridge	3	0.0%	£1,380	0.0%	1	0.0%	£255	0.0%
London Borough of Waltham Forest	6	0.0%	£6,699	0.0%	3	0.0%	£2,081	0.0%
Long Road Sixth Form College	44	0.2%	£185,440	0.2%	46	0.3%	£200,716	0.3%
Loughborough College	1	0.0%	£4,245	0.0%	1	0.0%	£4,751	0.0%
Lowestoft College	4	0.0%	£16,294	0.0%		0.0%		0.0%
Manchester College of Arts and Technology	13	0.1%	£4,750	0.0%	8	0.0%	£996	0.0%
Mary Ward Centre	1	0.0%	£539	0.0%		0.0%		0.0%
Matthew Boulton College of Further and Higher Education	1	0.0%	£662	0.0%		0.0%		0.0%
Merton College	5	0.0%	£5,772	0.0%		0.0%		0.0%
Milton Keynes College	29	0.2%		0.0%	22	0.1%		0.0%
Moulton College F.E.C	2	0.0%	£2,568	0.0%	2	0.0%	£9,092	0.0%
New College, Swindon	6	0.0%	£2,328	0.0%		0.0%		0.0%
Newcastle College	1	0.0%	£1,666	0.0%		0.0%		0.0%
Newcastle-under-Lyme College	11	0.1%	£3,822	0.0%		0.0%		0.0%
Newham College of Further Education	33	0.2%	£109,514	0.1%	27	0.1%	£84,330	0.1%
Newham Sixth Form College	3	0.0%	£16,566	0.0%	1	0.0%	£5,934	0.0%
Newham Training and Education Centre	1	0.0%	£301	0.0%		0.0%		0.0%
North Devon College	1	0.0%	£4,326	0.0%	1	0.0%	£4,377	0.0%
North Hertfordshire College	13	0.1%	£16,262	0.0%	6	0.0%	£4,335	0.0%
North West Kent College of Technology	10	0.1%	£14,471	0.0%	3	0.0%	£10,291	0.0%
Northbrook College, Sussex	1	0.0%	£256	0.0%		0.0%		0.0%
Norwich City College of Further and Higher Education	4	0.0%	£16,471	0.0%	4	0.0%	£16,828	0.0%
Oaklands College	5	0.0%	£24,602	0.0%	9	0.0%	£37,471	0.0%
Orpington College of Further Education	3	0.0%	£8,852	0.0%		0.0%		0.0%
Otley College of Agriculture and Horticulture	125	0.7%	£761,225	1.0%	170	0.9%	£1,189,279	1.5%
Oxford and Cherwell College	1	0.0%	£6,501	0.0%	1	0.0%	£6,745	0.0%
Palmer's College	368	2.0%	£1,684,972	2.2%	365	2.0%	£1,669,109	2.2%
Park Lane College	1	0.0%	£3,362	0.0%		0.0%		0.0%
Peter Symonds' College	1	0.0%	£4,795	0.0%		0.0%		0.0%
Peterborough City Council	2	0.0%	£342	0.0%	2	0.0%	£531	0.0%
Plumpton College		0.0%		0.0%	1	0.0%	£4,879	0.0%
Pre-school Learning Alliance	5	0.0%	£2,422	0.0%	2	0.0%	£1,212	0.0%
Preston College		0.0%		0.0%	1	0.0%	£3,978	0.0%
Priestley College		0.0%		0.0%	1	0.0%	£6,652	0.0%
Reaseheath College	3	0.0%	£15,142	0.0%	5	0.0%	£23,776	0.0%
Redbridge College	36	0.2%	£146,534	0.2%	38	0.2%	£143,378	0.2%
Reigate College	1	0.0%	£6,221	0.0%	1	0.0%	£5,727	0.0%
Seevic College	1,934	10.4%	£8,451,656	11.1%	1,998	11.0%	£9,343,388	12.1%
Sheffield College	1	0.0%	£385	0.0%		0.0%		0.0%
Sir George Monoux College	9	0.0%	£40,740	0.1%	9	0.0%	£39,238	0.1%
Sixth Form College, Colchester	2,127	11.4%	£10,519,430	13.8%	2,344	12.9%	£11,672,436	15.1%
South Birmingham College	1	0.0%	£433	0.0%	2	0.0%	£4,970	0.0%
South East Essex College of Arts and Technology	1,986	10.7%	£8,326,713	10.9%	2,156	11.9%	£9,547,531	12.3%
South Kent College	4	0.0%	£1,003	0.0%		0.0%		0.0%
South Thames College	1	0.0%	£5,772	0.0%	1	0.0%	£5,984	0.0%
South Tyneside College	1	0.0%	£685	0.0%		0.0%		0.0%
Southampton City College	1	0.0%	£5,394	0.0%		0.0%		0.0%
Southend on Sea Borough Council	21	0.1%	£10,972	0.0%	8	0.0%	£3,752	0.0%
Southgate College	4	0.0%	£19,875	0.0%	8	0.0%	£34,101	0.0%

Provider	06/07 F05				07/08 F01			
	Learners		Funding		Learners		Funding	
	numbers	%	£	%	numbers	%	£	%
Southwark College		0.0%		0.0%	4	0.0%	£18,177	0.0%
Sparshott College, Hampshire	3	0.0%	£19,203	0.0%	4	0.0%	£22,241	0.0%
St Charles Catholic Sixth Form College	1	0.0%	£5,782	0.0%	1	0.0%	£4,520	0.0%
St Francis Xavier Sixth Form College	1	0.0%	£2,028	0.0%		0.0%		0.0%
St Helens College	1	0.0%	£4,144	0.0%		0.0%		0.0%
Stamford College	1	0.0%	£531	0.0%		0.0%		0.0%
Stoke-on-Trent College	2	0.0%	£4,287	0.0%		0.0%		0.0%
Suffolk College	52	0.3%	£220,941	0.3%	48	0.3%	£224,217	0.3%
Sussex Downs College	1	0.0%	£5,106	0.0%	1	0.0%	£4,652	0.0%
Swindon College		0.0%		0.0%	1	0.0%	£4,309	0.0%
Telford College of Arts and Technology	5	0.0%	£2,614	0.0%	2	0.0%	£1,456	0.0%
Thames Valley University	3	0.0%	£1,636	0.0%	1	0.0%	£2,165	0.0%
The Henley College	1	0.0%	£4,162	0.0%		0.0%		0.0%
The London College of Beauty Therapy Ltd	13	0.1%	£46,518	0.1%	13	0.1%	£56,695	0.1%
The Sixth Form College Brooke House	1	0.0%	£6,155	0.0%		0.0%		0.0%
Thurrock and Basildon College	1,128	6.1%	£4,587,732	6.0%	935	5.1%	£3,539,996	4.6%
Thurrock Council		0.0%		0.0%	1	0.0%	£702	0.0%
Tower Hamlets College	1	0.0%	£5,001	0.0%	2	0.0%	£6,842	0.0%
Tresham Institute	2	0.0%	£11,464	0.0%		0.0%		0.0%
Uxbridge College	1	0.0%	£4,241	0.0%		0.0%		0.0%
Vardean College	1	0.0%	£4,569	0.0%	1	0.0%	£3,506	0.0%
Walford and North Shropshire College	1	0.0%	£300	0.0%		0.0%		0.0%
Waltham Forest College	41	0.2%	£100,678	0.1%	26	0.1%	£113,898	0.1%
Warwickshire College, Royal Leamington Spa, Burbv	5	0.0%	£4,633	0.0%	7	0.0%	£21,404	0.0%
West Cheshire College	1	0.0%	£1,615	0.0%		0.0%		0.0%
West Herts College	1	0.0%	£3,006	0.0%		0.0%		0.0%
West Kent College	4	0.0%	£6,129	0.0%	1	0.0%	£5,071	0.0%
West Suffolk College	33	0.2%	£121,692	0.2%	21	0.1%	£67,559	0.1%
Westminster Kingsway College	25	0.1%	£162,912	0.2%	20	0.1%	£139,047	0.2%
Wigan and Leigh College		0.0%		0.0%	1	0.0%	£4,829	0.0%
Workers' Educational Association	14	0.1%	£3,384	0.0%	6	0.0%	£1,341	0.0%
Writtle College	471	2.5%	£2,437,056	3.2%	479	2.6%	£2,381,749	3.1%
<b>Grand Total</b>	<b>18,597</b>	<b>100.0%</b>	<b>£76,146,054</b>	<b>100.0%</b>	<b>18,164</b>	<b>100.0%</b>	<b>£77,514,254</b>	<b>100.0%</b>

## 2.6 LA Southend-on-Sea

Table 06/07 & 07/08 16-18 FE Learners by provider

Provider	06/07 F05				07/08 F01			
	Learners		Funding		Learners		Funding	
	numbers	%	£	%	numbers	%	£	%
Access to Music	12	0.6%	£51,642	0.7%	21	1.0%	£106,234	1.2%
Bedford College		0.0%		0.0%	1	0.0%	£4,504	0.1%
Bournemouth & Poole College		0.0%		0.0%	2	0.1%	£5,113	0.1%
Chichester College	1	0.0%	£4,308	0.1%	1	0.0%	£3,882	0.0%
City of Bristol College		0.0%		0.0%	1	0.0%	£5,221	0.1%
Colchester Institute	1	0.0%	£803	0.0%	2	0.1%	£7,358	0.1%
College of North West London	1	0.0%	£3,433	0.0%		0.0%		0.0%
College of West Anglia		0.0%		0.0%	1	0.0%	£3,737	0.0%
Cornwall College	1	0.0%	£9,254	0.1%		0.0%		0.0%
Fashion Retail Academy		0.0%		0.0%	1	0.0%	£5,190	0.1%
Guildford College of Further and Higher Education	1	0.0%	£3,151	0.0%		0.0%		0.0%
Havering College of Further and Higher Education	10	0.5%	£42,944	0.6%	4	0.2%	£14,274	0.2%
Lambeth College	1	0.0%	£4,877	0.1%		0.0%		0.0%
Leeds College of Art and Design		0.0%		0.0%	1	0.0%	£5,882	0.1%
Manchester College of Arts and Technology	1	0.0%	£140	0.0%	1	0.0%	£146	0.0%
North Hertfordshire College	2	0.1%	£626	0.0%	1	0.0%	£736	0.0%
North West Kent College of Technology	1	0.0%	£214	0.0%		0.0%		0.0%
Sheffield College	1	0.0%	£5,555	0.1%		0.0%		0.0%
South East Essex College of Arts and Technology	1,322	65.6%	£5,183,188	67.5%	1,406	68.3%	£5,873,636	69.0%
Sparsholt College, Hampshire	1	0.0%	£8,103	0.1%		0.0%		0.0%
Telford College of Arts and Technology	1	0.0%	£385	0.0%		0.0%		0.0%
The London College of Beauty Therapy Ltd	1	0.0%	£2,137	0.0%		0.0%		0.0%
Tresham Institute	1	0.0%	£7,943	0.1%		0.0%		0.0%
West Herts College		0.0%		0.0%	1	0.0%	£4,666	0.1%
Westminster Kingsway College	4	0.2%	£27,613	0.4%	4	0.2%	£27,617	0.3%
Writtle College	11	0.5%	£53,461	0.7%	15	0.7%	£74,304	0.9%
(blank)		0.0%		0.0%	1	0.0%	£5,138	0.1%
Barking College	5	0.2%	£20,359	0.3%	6	0.3%	£16,522	0.2%
Barnet College	2	0.1%	£10,590	0.1%		0.0%		0.0%
Braintree College		0.0%		0.0%	2	0.1%	£5,995	0.1%
Chelmsford College	1	0.0%	£1,409	0.0%	4	0.2%	£16,764	0.2%
City and Islington College	1	0.0%	£4,038	0.1%		0.0%		0.0%
City of Westminster College	1	0.0%	£9,818	0.1%	2	0.1%	£14,274	0.2%
Epping Forest College		0.0%		0.0%	1	0.0%	£1,643	0.0%
Essex County Council	7	0.3%	£3,786	0.0%	9	0.4%	£5,511	0.1%
Greenwich Community College		0.0%		0.0%	1	0.0%	£3,099	0.0%
Hackney Community College	1	0.0%	£3,524	0.0%	1	0.0%	£5,074	0.1%
Havering Sixth Form College	3	0.1%	£15,343	0.2%	1	0.0%	£4,999	0.1%
John Ruskin College		0.0%		0.0%	1	0.0%	£4,945	0.1%
Newham College of Further Education	2	0.1%	£5,761	0.1%	1	0.0%	£1,291	0.0%
Palmer's College		0.0%		0.0%	1	0.0%	£4,346	0.1%
Redbridge College	1	0.0%	£3,067	0.0%	2	0.1%	£6,899	0.1%
Seevic College	416	20.6%	£1,799,693	23.4%	434	21.1%	£2,011,773	23.6%
South Kent College	2	0.1%	£317	0.0%		0.0%		0.0%
South Tyneside College	1	0.0%	£375	0.0%		0.0%		0.0%
Southend on Sea Borough Council	122	6.1%	£61,447	0.8%	71	3.4%	£58,210	0.7%
Thurrock and Basildon College	75	3.7%	£318,386	4.1%	58	2.8%	£205,222	2.4%
West Kent College	1	0.0%	£1,718	0.0%		0.0%		0.0%
West Thames College	1	0.0%	£5,579	0.1%		0.0%		0.0%
Selby College		0.0%		0.0%	1	0.0%	£4,465	0.1%
<b>Grand Total</b>	<b>2,016</b>	<b>100.0%</b>	<b>£7,674,989</b>	<b>100.0%</b>	<b>2,060</b>	<b>100.0%</b>	<b>£8,518,672</b>	<b>100.0%</b>

## 2.7 LA Thurrock

**Table 06/07 & 07/08 16-18 FE Learners by provider**

Provider	06/07 F05				07/08 F01			
	Learners		Funding		Learners		Funding	
	numbers	%	£	%	numbers	%	£	%
Access to Music	6	0.2%	£31,132	0.2%	6	0.2%	£29,309	0.2%
Boston College		0.0%		0.0%	1	0.0%	£5,182	0.0%
Capel Manor College	2	0.1%	£11,903	0.1%	3	0.1%	£22,396	0.2%
Colchester Institute	1	0.0%	£515	0.0%		0.0%		0.0%
College of North East London	1	0.0%	£6,047	0.0%	2	0.1%	£9,749	0.1%
College of North West London		0.0%		0.0%	1	0.0%	£3,893	0.0%
College of West Anglia	2	0.1%	£3,638	0.0%	2	0.1%	£10,583	0.1%
Cornwall College	1	0.0%	£4,024	0.0%		0.0%		0.0%
Derby College		0.0%		0.0%	1	0.0%	£791	0.0%
Ealing , Hammersmith and West London College	2	0.1%	£2,842	0.0%		0.0%		0.0%
Fashion Retail Academy	1	0.0%	£4,999	0.0%		0.0%		0.0%
Hartpury College	1	0.0%	£5,461	0.0%		0.0%		0.0%
Haveing College of Further and Higher Education	73	2.4%	£290,257	2.2%	76	2.5%	£401,965	3.1%
Lincoln College	1	0.0%	£5,681	0.0%	1	0.0%	£5,965	0.0%
Manchester College of Arts and Technology	2	0.1%	£2,424	0.0%	1	0.0%	£2,057	0.0%
Merton College	2	0.1%	£9,803	0.1%		0.0%		0.0%
Newcastle-under-Lyme College	1	0.0%	£122	0.0%		0.0%		0.0%
North Hertfordshire College	2	0.1%	£1,400	0.0%	1	0.0%	£567	0.0%
North West Kent College of Technology	1	0.0%	£552	0.0%	1	0.0%	£5,676	0.0%
Norwich City College of Further and Higher Education	1	0.0%	£6,645	0.1%	1	0.0%	£4,073	0.0%
Oaklands College	2	0.1%	£8,347	0.1%	2	0.1%	£8,654	0.1%
Richmond upon Thames College	1	0.0%	£7,079	0.1%		0.0%		0.0%
South East Essex College of Arts and Technology	66	2.2%	£282,987	2.1%	113	3.8%	£535,009	4.1%
Sparsholt College, Hampshire	1	0.0%	£6,939	0.1%	1	0.0%	£7,198	0.1%
Thames Valley University	1	0.0%	£4,590	0.0%	2	0.1%	£10,802	0.1%
The London College of Beauty Therapy Ltd		0.0%		0.0%	2	0.1%	£9,596	0.1%
Westminster Kingsway College	6	0.2%	£39,590	0.3%	3	0.1%	£24,212	0.2%
Wiltshire College	1	0.0%	£7,532	0.1%	1	0.0%	£3,646	0.0%
Workers' Educational Association	1	0.0%	£751	0.0%		0.0%		0.0%
Writtle College	21	0.7%	£154,134	1.2%	20	0.7%	£100,805	0.8%
Barking College	29	1.0%	£103,960	0.8%	38	1.3%	£172,472	1.3%
Bicton College	1	0.0%	£4,688	0.0%	1	0.0%	£5,197	0.0%
Braintree College	18	0.6%	£32,646	0.2%	4	0.1%	£7,777	0.1%
Bromley College of Further and Higher Education	1	0.0%	£4,331	0.0%	1	0.0%	£4,487	0.0%
Building Crafts College		0.0%		0.0%	1	0.0%	£4,111	0.0%
Chelmsford College	9	0.3%	£32,540	0.2%	4	0.1%	£15,146	0.1%
City and Islington College	2	0.1%	£4,773	0.0%	1	0.0%	£4,183	0.0%
City of Westminster College	1	0.0%	£5,605	0.0%	1	0.0%	£4,721	0.0%
Epping Forest College	1	0.0%	£3,764	0.0%	2	0.1%	£9,149	0.1%
Essex County Council	2	0.1%	£382	0.0%	4	0.1%	£3,435	0.0%
Hackney Community College	1	0.0%	£3,200	0.0%	1	0.0%	£1,314	0.0%
Haveing Sixth Form College	53	1.8%	£241,639	1.8%	55	1.8%	£299,638	2.3%
Kingston College	1	0.0%	£4,207	0.0%		0.0%		0.0%
Lewisham College	1	0.0%	£2,073	0.0%	1	0.0%	£1,773	0.0%
Leyton Sixth Form College	1	0.0%	£4,114	0.0%	2	0.1%	£10,662	0.1%
Newham College of Further Education	14	0.5%	£44,954	0.3%	11	0.4%	£29,025	0.2%
Newham Sixth Form College	4	0.1%	£25,406	0.2%	4	0.1%	£21,235	0.2%
Orpington College of Further Education	1	0.0%	£3,356	0.0%	1	0.0%	£4,598	0.0%
Palmer's College	1,432	47.7%	£6,714,478	50.8%	1,476	49.2%	£6,912,339	52.5%
Redbridge College	5	0.2%	£22,206	0.2%	9	0.3%	£38,815	0.3%
Seevic College	88	2.9%	£358,022	2.7%	107	3.6%	£466,639	3.5%
Sir George Monoux College	2	0.1%	£10,558	0.1%		0.0%		0.0%
South Kent College		0.0%		0.0%	1	0.0%	£3,896	0.0%
South Thames College	1	0.0%	£7,925	0.1%		0.0%		0.0%
St Charles Catholic Sixth Form College		0.0%		0.0%	1	0.0%	£5,626	0.0%
The Sixth Form College Brooke House		0.0%		0.0%	2	0.1%	£6,861	0.1%
Thurrock and Basildon College	1,102	36.7%	£4,633,139	35.1%	1,014	33.8%	£3,894,435	29.6%
Thurrock Council	29	1.0%	£14,267	0.1%	15	0.5%	£9,586	0.1%

Provider	06/07 F05				07/08 F01			
	Learners		Funding		Learners		Funding	
	numbers	%	£	%	numbers	%	£	%
Tower Hamlets College	2	0.1%	£12,346	0.1%	1	0.0%	£5,876	0.0%
Waltham Forest College		0.0%		0.0%	1	0.0%	£3,796	0.0%
St Dominic's Sixth Form College	1	0.0%	£3,977	0.0%		0.0%		0.0%
Berkshire College of Agriculture	1	0.0%	£7,541	0.1%		0.0%		0.0%
York College		0.0%		0.0%	1	0.0%	£9,514	0.1%
South Nottingham College		0.0%		0.0%	1	0.0%	£5,455	0.0%
London Borough of Newham	1	0.0%	£784	0.0%		0.0%		0.0%
<b>Grand Total</b>	<b>3,004</b>	<b>100.0%</b>	<b>£13,206,275</b>	<b>100.0%</b>	<b>3,002</b>	<b>100.0%</b>	<b>£13,163,890</b>	<b>100.0%</b>

## 2.8 LA Hertfordshire

Table 06/07 & 07/08 16-18 FE Learners by provider

Provider	06/07 F05				07/08 F01			
	Learners		Funding		Learners		Funding	
	numbers	%	£	%	numbers	%	£	%
(blank)	4	0.0%	£14,980	0.0%	6	0.1%	£32,773	0.1%
Abingdon and Witney College	2	0.0%	£10,860	0.0%	3	0.0%	£19,836	0.0%
Access to Music	2	0.0%	£6,946	0.0%	3	0.0%	£16,205	0.0%
Alton College	1	0.0%	£988	0.0%		0.0%		0.0%
Amersham and Wycombe College	140	1.4%	£616,949	1.5%	150	1.5%	£731,035	1.6%
Aylesbury College	71	0.7%	£268,406	0.7%	77	0.8%	£334,755	0.7%
Barking College		0.0%		0.0%	1	0.0%	£4,270	0.0%
Barnet College	113	1.2%	£413,008	1.0%	105	1.0%	£423,100	0.9%
Barnfield College	160	1.6%	£457,747	1.1%	116	1.2%	£467,331	1.0%
Barton Peveril College	1	0.0%	£5,824	0.0%		0.0%		0.0%
Bedford College	26	0.3%	£47,368	0.1%	12	0.1%	£51,302	0.1%
Berkshire College of Agriculture	2	0.0%	£6,903	0.0%	1	0.0%	£5,438	0.0%
Bicton College	3	0.0%	£13,574	0.0%	2	0.0%	£13,457	0.0%
Birmingham City Council	1	0.0%	£170	0.0%		0.0%		0.0%
Blackpool and The Fylde College	1	0.0%	£2,008	0.0%		0.0%		0.0%
Blake College		0.0%		0.0%	1	0.0%	£3,074	0.0%
Boston College	1	0.0%	£4,220	0.0%	1	0.0%	£3,752	0.0%
Bournemouth & Poole College	2	0.0%	£2,321	0.0%	2	0.0%	£12,505	0.0%
Braintree College	3	0.0%	£9,430	0.0%	3	0.0%	£4,392	0.0%
Bridgwater College	11	0.1%	£2,814	0.0%		0.0%		0.0%
Brockenhurst College	1	0.0%	£4,514	0.0%	1	0.0%	£3,825	0.0%
Bromley College of Further and Higher Education		0.0%		0.0%	1	0.0%	£7,942	0.0%
Brooklands College	2	0.0%	£11,882	0.0%		0.0%		0.0%
Buckinghamshire County Council	5	0.1%	£2,499	0.0%		0.0%		0.0%
Building Crafts College	1	0.0%	£701	0.0%	1	0.0%	£2,770	0.0%
Cambridge Regional College	253	2.6%	£822,134	2.0%	195	1.9%	£971,799	2.2%
Capel Manor College	55	0.6%	£368,298	0.9%	50	0.5%	£307,991	0.7%
Central Sussex College	2	0.0%	£13,647	0.0%		0.0%		0.0%
Chelmsford College	3	0.0%	£8,809	0.0%	6	0.1%	£22,175	0.0%
Chichester College	1	0.0%	£6,573	0.0%	1	0.0%	£3,486	0.0%
City and Islington College	13	0.1%	£63,230	0.2%	12	0.1%	£59,491	0.1%
City College Brighton and Hove	1	0.0%	£4,211	0.0%	4	0.0%	£19,439	0.0%
City Literary Institute (The)	6	0.1%	£4,822	0.0%	2	0.0%	£585	0.0%
City of Bath College	2	0.0%	£8,503	0.0%		0.0%		0.0%
City of Bristol College	1	0.0%	£231	0.0%	1	0.0%	£234	0.0%
City of Westminster College	9	0.1%	£41,943	0.1%	18	0.2%	£77,970	0.2%
Colchester Institute	3	0.0%	£9,905	0.0%	4	0.0%	£7,409	0.0%
College of North East London	18	0.2%	£68,703	0.2%	9	0.1%	£33,351	0.1%
College of North West London	21	0.2%	£66,407	0.2%	25	0.2%	£103,053	0.2%
College of West Anglia	10	0.1%	£27,468	0.1%	3	0.0%	£9,092	0.0%
Cornwall College	2	0.0%	£5,781	0.0%	2	0.0%	£11,650	0.0%
Croydon College	2	0.0%	£8,576	0.0%	4	0.0%	£17,228	0.0%
Derby College	6	0.1%	£5,802	0.0%	3	0.0%	£3,005	0.0%
Devon County Council	1	0.0%	£135	0.0%		0.0%		0.0%
Doncaster College	1	0.0%	£386	0.0%		0.0%		0.0%
Dunstable College	34	0.3%	£126,113	0.3%	23	0.2%	£84,006	0.2%
Ealing, Hammersmith and West London College	5	0.1%	£26,695	0.1%	7	0.1%	£30,544	0.1%
East Berkshire College	9	0.1%	£53,353	0.1%	5	0.0%	£21,676	0.0%
East Durham & Houghall Community College	5	0.1%	£20,476	0.1%	3	0.0%	£17,708	0.0%
East Norfolk Sixth Form College		0.0%		0.0%	1	0.0%	£4,060	0.0%
Easton College	1	0.0%	£4,644	0.0%	1	0.0%	£7,030	0.0%
Enfield College	41	0.4%	£111,373	0.3%	33	0.3%	£128,521	0.3%
Epping Forest College	5	0.1%	£7,717	0.0%	4	0.0%	£12,316	0.0%
Essex County Council	4	0.0%	£1,545	0.0%		0.0%		0.0%
Fashion Retail Academy	16	0.2%	£73,714	0.2%	20	0.2%	£100,527	0.2%
Filton College	1	0.0%	£4,688	0.0%	2	0.0%	£10,342	0.0%
Greenwich Community College	1	0.0%	£873	0.0%	2	0.0%	£10,418	0.0%
Guildford College of Further and Higher Education	3	0.0%	£27,754	0.1%	2	0.0%	£10,511	0.0%

Provider	06/07 F05				07/08 F01			
	Learners		Funding		Learners		Funding	
	numbers	%	£	%	numbers	%	£	%
Hackney Community College	3	0.0%	£7,455	0.0%	1	0.0%	£5,152	0.0%
Hadlow College	2	0.0%	£3,037	0.0%	2	0.0%	£9,374	0.0%
Harlow College	220	2.3%	£917,291	2.3%	233	2.3%	£1,054,393	2.4%
Harrow College	60	0.6%	£248,730	0.6%	52	0.5%	£235,505	0.5%
Hartpury College	10	0.1%	£56,378	0.1%	4	0.0%	£30,418	0.1%
Havering College of Further and Higher Education	5	0.1%	£18,637	0.0%	1	0.0%	£4,924	0.0%
Herefordshire College of Technology	1	0.0%	£7,068	0.0%	1	0.0%	£1,331	0.0%
Hertford Regional College	1,488	15.2%	£6,661,396	16.4%	1,476	14.8%	£6,603,117	14.8%
Highbury College, Portsmouth	2	0.0%	£717	0.0%		0.0%		0.0%
Hills Road Sixth Form College	38	0.4%	£156,166	0.4%	33	0.3%	£148,237	0.3%
Holy Cross College	1	0.0%	£4,649	0.0%		0.0%		0.0%
Hull College	1	0.0%	£175	0.0%		0.0%		0.0%
Huntingdonshire Regional College	3	0.0%	£5,645	0.0%	1	0.0%	£4,598	0.0%
Isle of Wight College	2	0.0%	£7,803	0.0%	1	0.0%	£5,128	0.0%
John Ruskin College	2	0.0%	£2,380	0.0%	4	0.0%	£6,913	0.0%
Kensington and Chelsea College	3	0.0%	£10,948	0.0%	3	0.0%	£8,413	0.0%
Kingston College	3	0.0%	£839	0.0%		0.0%		0.0%
Kingston Maurward College	1	0.0%	£3,551	0.0%		0.0%		0.0%
Lambeth College	4	0.0%	£16,953	0.0%	5	0.0%	£15,050	0.0%
Leeds College of Art and Design	1	0.0%	£5,672	0.0%	2	0.0%	£11,764	0.0%
Leeds College of Music		0.0%		0.0%	1	0.0%	£5,364	0.0%
Leeds Metropolitan University	1	0.0%	£5,316	0.0%		0.0%		0.0%
Leicester College	9	0.1%	£7,503	0.0%		0.0%		0.0%
Lewisham College	2	0.0%	£9,937	0.0%	1	0.0%	£3,853	0.0%
Leyton Sixth Form College	1	0.0%	£5,038	0.0%	1	0.0%	£4,487	0.0%
Lincoln College	1	0.0%	£383	0.0%	1	0.0%	£4,737	0.0%
Liverpool Community College	1	0.0%	£1,147	0.0%		0.0%		0.0%
London Borough of Bexley	1	0.0%	£642	0.0%		0.0%		0.0%
London Electronics College		0.0%		0.0%	1	0.0%	£4,890	0.0%
Long Road Sixth Form College	41	0.4%	£172,226	0.4%	57	0.6%	£253,969	0.6%
Loughborough College		0.0%		0.0%	1	0.0%	£864	0.0%
Lowestoft College		0.0%		0.0%	1	0.0%	£3,601	0.0%
Luton Borough Council	3	0.0%	£469	0.0%		0.0%		0.0%
Luton Sixth Form College	12	0.1%	£48,273	0.1%	12	0.1%	£54,569	0.1%
Manchester College of Arts and Technology	7	0.1%	£6,224	0.0%	3	0.0%	£2,289	0.0%
Mary Ward Centre		0.0%		0.0%	1	0.0%	£700	0.0%
Matthew Boulton College of Further and Higher Education	1	0.0%	£662	0.0%		0.0%		0.0%
Merton College	23	0.2%	£21,737	0.1%	4	0.0%	£4,543	0.0%
Milton Keynes College	12	0.1%	£55,745	0.1%	13	0.1%	£63,584	0.1%
Moulton College F.E.C	7	0.1%	£33,014	0.1%	6	0.1%	£34,581	0.1%
New College, Swindon	1	0.0%	£123	0.0%		0.0%		0.0%
Newcastle-under-Lyme College	7	0.1%	£853	0.0%	1	0.0%	£592	0.0%
Newham College of Further Education	14	0.1%	£41,370	0.1%	10	0.1%	£28,438	0.1%
North East Worcestershire College	1	0.0%	£4,764	0.0%		0.0%		0.0%
North Hertfordshire College	1,873	19.2%	£6,826,328	16.8%	2,000	20.0%	£7,649,731	17.1%
North Warwickshire & Hinckley College	2	0.0%	£1,943	0.0%	1	0.0%	£4,889	0.0%
North West Kent College of Technology	3	0.0%	£508	0.0%		0.0%		0.0%
Northampton College	1	0.0%	£897	0.0%		0.0%		0.0%
Northbrook College, Sussex	1	0.0%	£256	0.0%		0.0%		0.0%
Northumberland College	1	0.0%	£1,611	0.0%		0.0%		0.0%
Norwich City College of Further and Higher Education		0.0%		0.0%	1	0.0%	£4,417	0.0%
Oaklands College	2,149	22.0%	£9,683,679	23.9%	2,433	24.3%	£12,169,844	27.2%
Orpington College of Further Education	1	0.0%	£3,037	0.0%	1	0.0%	£4,159	0.0%
Otley College of Agriculture and Horticulture	1	0.0%	£5,003	0.0%	1	0.0%	£5,578	0.0%
Oxford and Cherwell College	4	0.0%	£19,169	0.0%	2	0.0%	£10,958	0.0%
Penwith College	1	0.0%	£3,454	0.0%		0.0%		0.0%
Peterborough City Council	1	0.0%	£170	0.0%		0.0%		0.0%
Plumpton College	2	0.0%	£7,207	0.0%	1	0.0%	£5,195	0.0%
Plymouth College of Art and Design		0.0%		0.0%	1	0.0%	£6,315	0.0%
Plymouth College of Further Education	1	0.0%	£3,256	0.0%		0.0%		0.0%
Pre-school Learning Alliance	1	0.0%	£745	0.0%		0.0%		0.0%
Reaseheath College	3	0.0%	£14,391	0.0%	1	0.0%	£3,983	0.0%
Redbridge College		0.0%		0.0%	4	0.0%	£14,196	0.0%
Reigate College		0.0%		0.0%	1	0.0%	£6,681	0.0%
Richmond upon Thames College	1	0.0%	£4,427	0.0%	3	0.0%	£11,984	0.0%

Provider	06/07 F05				07/08 F01			
	Learners		Funding		Learners		Funding	
	numbers	%	£	%	numbers	%	£	%
Salisbury College		0.0%		0.0%	2	0.0%	£4,570	0.0%
Seevic College		0.0%		0.0%	1	0.0%	£547	0.0%
Sheffield College	1	0.0%	£433	0.0%	2	0.0%	£751	0.0%
Sir George Monoux College	4	0.0%	£16,580	0.0%	4	0.0%	£18,640	0.0%
South Cheshire College	1	0.0%	£94	0.0%		0.0%		0.0%
South Devon College		0.0%		0.0%	2	0.0%	£4,797	0.0%
South Kent College	1	0.0%	£159	0.0%	1	0.0%	£164	0.0%
South Thames College	3	0.0%	£11,920	0.0%	4	0.0%	£23,064	0.1%
Southgate College	49	0.5%	£170,311	0.4%	36	0.4%	£120,644	0.3%
Southwark College	2	0.0%	£2,296	0.0%		0.0%		0.0%
Sparsholt College, Hampshire	4	0.0%	£26,804	0.1%	3	0.0%	£13,284	0.0%
St Charles Catholic Sixth Form College	2	0.0%	£12,432	0.0%	1	0.0%	£4,520	0.0%
St Dominic's Sixth Form College	12	0.1%	£56,755	0.1%	9	0.1%	£43,139	0.1%
Stanmore College	44	0.5%	£168,444	0.4%	49	0.5%	£208,446	0.5%
Stoke-on-Trent College	3	0.0%	£3,956	0.0%	1	0.0%	£183	0.0%
Stroud College of Further Education		0.0%		0.0%	1	0.0%	£4,923	0.0%
Suffolk College	1	0.0%	£5,060	0.0%	1	0.0%	£5,248	0.0%
Sussex Downs College		0.0%		0.0%	1	0.0%	£4,679	0.0%
Telford College of Arts and Technology		0.0%		0.0%	1	0.0%	£899	0.0%
Thames Valley University	2	0.0%	£1,233	0.0%		0.0%		0.0%
The Henley College	2	0.0%	£8,214	0.0%	1	0.0%	£3,443	0.0%
The London College of Beauty Therapy Ltd	14	0.1%	£60,470	0.1%	13	0.1%	£58,409	0.1%
The Sixth Form College Brooke House	2	0.0%	£13,849	0.0%	1	0.0%	£6,945	0.0%
Thurrock and Basildon College		0.0%		0.0%	1	0.0%	£1,927	0.0%
Tresham Institute	3	0.0%	£17,545	0.0%		0.0%		0.0%
Truro College	1	0.0%	£1,579	0.0%	3	0.0%	£13,179	0.0%
Uxbridge College	14	0.1%	£58,508	0.1%	16	0.2%	£79,339	0.2%
Walsall College of Arts and Technology	1	0.0%	£2,530	0.0%	1	0.0%	£4,343	0.0%
Waltham Forest College	6	0.1%	£13,990	0.0%	2	0.0%	£6,307	0.0%
Warwickshire College, Royal Leamington Spa, Rushdy	3	0.0%	£8,941	0.0%		0.0%		0.0%
West Herts College	2,335	23.9%	£10,250,222	25.3%	2,432	24.3%	£10,723,039	24.0%
West Nottinghamshire College	1	0.0%	£11,656	0.0%	1	0.0%		0.0%
West Suffolk College	2	0.0%	£7,333	0.0%	3	0.0%	£5,545	0.0%
West Thames College	1	0.0%	£6,354	0.0%		0.0%		0.0%
Westminster Kingsway College	26	0.3%	£131,931	0.3%	15	0.1%	£118,325	0.3%
Weston College	1	0.0%	£253	0.0%		0.0%		0.0%
Wiltshire College	1	0.0%	£274	0.0%		0.0%		0.0%
Wirral Metropolitan College	1	0.0%	£174	0.0%		0.0%		0.0%
Woking College	1	0.0%	£1,811	0.0%		0.0%		0.0%
Woodhouse College	8	0.1%	£31,379	0.1%	14	0.1%	£68,781	0.2%
Worcester College of Technology	1	0.0%	£625	0.0%	1	0.0%	£1,823	0.0%
Workers' Educational Association	4	0.0%	£388	0.0%		0.0%		0.0%
Writtle College	78	0.8%	£451,633	1.1%	69	0.7%	£374,434	0.8%
Yeovil College		0.0%		0.0%	1	0.0%	£4,328	0.0%
<b>Grand Total</b>	<b>9,764</b>	<b>100.0%</b>	<b>£40,581,755</b>	<b>100.0%</b>	<b>10,004</b>	<b>100.0%</b>	<b>£44,665,354</b>	<b>100.0%</b>

## 2.9 LA Norfolk

Table 06/07 & 07/08 16-18 FE Learners by provider

Provider	06/07 F05				07/08 F01			
	Learners		Funding		Learners		Funding	
	numbers	%	£	%	numbers	%	£	%
(blank)	6	0.1%	£23,838	0.1%	1	0.0%	£6,219	0.0%
A4E Ltd	71	0.7%		0.0%	23	0.2%		0.0%
Access to Music	97	0.9%	£451,052	1.1%	116	1.2%	£606,428	1.4%
Barking College	1	0.0%	£5,496	0.0%	1	0.0%	£1,745	0.0%
Barnfield College	1	0.0%	£339	0.0%		0.0%		0.0%
Basingstoke College of Technology		0.0%		0.0%	1	0.0%	£6,357	0.0%
Bedford College	5	0.0%	£9,309	0.0%	4	0.0%	£13,096	0.0%
Berkshire College of Agriculture	1	0.0%	£6,468	0.0%		0.0%		0.0%
Bexley College	1	0.0%	£6,396	0.0%		0.0%		0.0%
Bicton College		0.0%		0.0%	1	0.0%	£196	0.0%
Bishop Burton College		0.0%		0.0%	1	0.0%	£4,336	0.0%
Boston College	1	0.0%	£6,485	0.0%	3	0.0%	£9,393	0.0%
Bournemouth & Poole College		0.0%		0.0%	1	0.0%	£3,401	0.0%
Bridgwater College	1	0.0%	£269	0.0%		0.0%		0.0%
Brockenhurst College		0.0%		0.0%	1	0.0%	£4,956	0.0%
Brooksby Melton College	1	0.0%	£423	0.0%	1	0.0%	£286	0.0%
Broxtowe College, Nottingham	1	0.0%	£5,090	0.0%	2	0.0%	£5,478	0.0%
Buckinghamshire County Council	1	0.0%	£209	0.0%		0.0%		0.0%
Bury College		0.0%		0.0%	1	0.0%	£3,858	0.0%
Calderdale College	1	0.0%	£551	0.0%		0.0%		0.0%
Cambridge Regional College	26	0.2%	£84,319	0.2%	15	0.2%	£74,667	0.2%
Capel Manor College		0.0%		0.0%	1	0.0%	£3,252	0.0%
Central Sussex College	1	0.0%	£9,083	0.0%		0.0%		0.0%
Chesterfield College	1	0.0%	£405	0.0%		0.0%		0.0%
Chichester College	1	0.0%	£256	0.0%		0.0%		0.0%
City of Bristol College	4	0.0%	£6,116	0.0%		0.0%		0.0%
City of Westminster College		0.0%		0.0%	1	0.0%	£1,357	0.0%
Colchester Institute	1	0.0%	£6,834	0.0%		0.0%		0.0%
College of North West London		0.0%		0.0%	1	0.0%	£8,541	0.0%
College of West Anglia	1,887	18.1%	£8,963,407	20.9%	1,828	18.5%	£9,839,413	22.2%
Cornwall College	2	0.0%	£5,819	0.0%		0.0%		0.0%
Derby College	3	0.0%	£1,910	0.0%	2	0.0%	£2,013	0.0%
Doncaster College		0.0%		0.0%	1	0.0%	£4,012	0.0%
East Berkshire College		0.0%		0.0%	1	0.0%	£5,132	0.0%
East Durham & Houghall Community College	1	0.0%	£119	0.0%		0.0%		0.0%
East Norfolk Sixth Form College	1,091	10.5%	£4,800,504	11.2%	1,174	11.9%	£5,483,523	12.4%
East Riding College	1	0.0%	£4,402	0.0%		0.0%		0.0%
Easton College	524	5.0%	£3,016,138	7.0%	611	6.2%	£3,708,502	8.4%
Epping Forest College	1	0.0%	£3,757	0.0%		0.0%		0.0%
Fashion Retail Academy	1	0.0%	£4,999	0.0%	1	0.0%	£4,101	0.0%
Grantham College	1	0.0%	£4,944	0.0%	1	0.0%	£2,210	0.0%
Great Yarmouth College of Further Education	1,322	12.7%	£5,804,139	13.5%	1,204	12.2%	£4,225,773	9.5%
Greenwich Community College	1	0.0%	£6,527	0.0%		0.0%		0.0%
Grimsby Institute of Further & Higher Education	3	0.0%	£378	0.0%	2	0.0%	£371	0.0%
Guildford College of Further and Higher Education		0.0%		0.0%	1	0.0%	£5,582	0.0%
Harlow College	2	0.0%	£10,196	0.0%		0.0%		0.0%
Hartpury College	2	0.0%	£16,136	0.0%		0.0%		0.0%
Henley College Coventry	1	0.0%	£185	0.0%		0.0%		0.0%
Herefordshire College of Technology	1	0.0%	£4,712	0.0%		0.0%		0.0%
Hertford Regional College		0.0%		0.0%	1	0.0%	£1,877	0.0%
Highbury College, Portsmouth	1	0.0%	£5,969	0.0%		0.0%		0.0%
Hills Road Sixth Form College	6	0.1%	£9,496	0.0%	3	0.0%	£13,452	0.0%
Huddersfield New College	1	0.0%	£1,520	0.0%		0.0%		0.0%
Huntingdonshire Regional College	3	0.0%	£30,086	0.1%	1	0.0%	£5,532	0.0%
Kendal College	1	0.0%	£5,843	0.0%		0.0%		0.0%
Lambeth College	1	0.0%	£7,199	0.0%		0.0%		0.0%
Leeds College of Art and Design		0.0%		0.0%	1	0.0%	£6,349	0.0%
Lewisham College	1	0.0%	£780	0.0%		0.0%		0.0%

Provider	06/07 F05				07/08 F01			
	Learners		Funding		Learners		Funding	
	numbers	%	£	%	numbers	%	£	%
Lincoln College	1	0.0%	£6,064	0.0%	3	0.0%	£15,443	0.0%
Long Road Sixth Form College	4	0.0%	£18,268	0.0%	2	0.0%	£9,155	0.0%
Loughborough College	1	0.0%	£713	0.0%	1	0.0%	£4,400	0.0%
Lowestoft College	63	0.6%	£301,413	0.7%	71	0.7%	£326,498	0.7%
Manchester College of Arts and Technology	5	0.0%	£3,347	0.0%	4	0.0%	£2,583	0.0%
Mid-Kent College	1	0.0%	£7,607	0.0%		0.0%		0.0%
Newcastle-under-Lyme College	2	0.0%	£1,239	0.0%		0.0%		0.0%
Newham College of Further Education	1	0.0%	£4,372	0.0%	2	0.0%	£6,217	0.0%
Norfolk County Council	414	4.0%	£164,621	0.4%	186	1.9%	£152,579	0.3%
North Hertfordshire College	9	0.1%	£4,970	0.0%	2	0.0%	£1,134	0.0%
North West Kent College of Technology	1	0.0%	£213	0.0%		0.0%		0.0%
Norwich City College of Further and Higher Education	3,815	36.5%	£15,209,456	35.5%	3,629	36.7%	£15,552,498	35.1%
Oaklands College		0.0%		0.0%	3	0.0%	£8,535	0.0%
Otley College of Agriculture and Horticulture	72	0.7%	£71,179	0.2%	12	0.1%	£43,175	0.1%
Oxford and Cherwell College	1	0.0%	£6,948	0.0%		0.0%		0.0%
Park Lane College	1	0.0%	£1,562	0.0%		0.0%		0.0%
Paston College	648	6.2%	£2,590,970	6.0%	673	6.8%	£2,879,251	6.5%
Pershore Group of Colleges	2	0.0%	£1,476	0.0%		0.0%		0.0%
Peter Symonds' College		0.0%		0.0%	1	0.0%	£4,691	0.0%
Peterborough Regional College	11	0.1%	£33,234	0.1%	7	0.1%	£28,923	0.1%
Queen Mary's College	1	0.0%	£5,603	0.0%		0.0%		0.0%
Reaseheath College	1	0.0%	£2,401	0.0%	3	0.0%	£10,673	0.0%
Salisbury College		0.0%		0.0%	1	0.0%	£4,630	0.0%
Sandwell College	1	0.0%	£1,866	0.0%		0.0%		0.0%
South East Derbyshire College	1	0.0%	£4,739	0.0%		0.0%		0.0%
South Kent College	1	0.0%	£159	0.0%		0.0%		0.0%
South Tyneside College	3	0.0%	£4,587	0.0%	2	0.0%	£5,167	0.0%
Southampton City College		0.0%		0.0%	1	0.0%	£110	0.0%
Southgate College	4	0.0%	£20,342	0.0%	1	0.0%	£384	0.0%
Sparsholt College, Hampshire	3	0.0%	£20,509	0.0%	5	0.1%	£31,891	0.1%
Stafford College	1	0.0%	£386	0.0%		0.0%		0.0%
Suffolk College	4	0.0%	£18,642	0.0%	6	0.1%	£29,378	0.1%
Suffolk County Council	1	0.0%	£196	0.0%		0.0%		0.0%
Sussex Downs College	1	0.0%	£3,699	0.0%		0.0%		0.0%
Tameside College	1	0.0%	£1,507	0.0%		0.0%		0.0%
Thanet College		0.0%		0.0%	1	0.0%	£5,680	0.0%
The Sixth Form College, Solihull	1	0.0%	£4,411	0.0%		0.0%		0.0%
Tresham Institute	2	0.0%	£6,956	0.0%	1	0.0%	£7,192	0.0%
Uxbridge College	1	0.0%	£5,410	0.0%		0.0%		0.0%
Warwickshire College, Royal Leamington Spa, Rugby	4	0.0%	£11,692	0.0%	3	0.0%	£23,652	0.1%
West Nottinghamshire College	14	0.1%	£33,099	0.1%	9	0.1%	£6,798	0.0%
West Suffolk College	212	2.0%	£948,415	2.2%	234	2.4%	£1,052,831	2.4%
Wirral Metropolitan College		0.0%		0.0%	1	0.0%	£217	0.0%
Worcester College of Technology	1	0.0%	£1,251	0.0%		0.0%		0.0%
Workers' Educational Association	42	0.4%	£4,992	0.0%	22	0.2%	£2,364	0.0%
Writtle College	4	0.0%	£20,220	0.0%	4	0.0%	£17,302	0.0%
Wyggeston and Queen Elizabeth I College	1	0.0%	£1,927	0.0%	1	0.0%	£3,448	0.0%
Yeovil College		0.0%		0.0%	1	0.0%	£3,629	0.0%
<b>Grand Total</b>	<b>10,438</b>	<b>100.0%</b>	<b>£42,882,765</b>	<b>100.0%</b>	<b>9,899</b>	<b>100.0%</b>	<b>£44,301,834</b>	<b>100.0%</b>

# 2.10 LA Suffolk

**Table 06/07 & 07/08 16-18 FE Learners by provider**

Provider	06/07 F05				07/08 F01			
	Learners		Funding		Learners		Funding	
	numbers	%	£	%	numbers	%	£	%
(blank)		0.0%		0.0%	1	0.0%	£4,124	0.0%
A4E Ltd	440	5.5%			105	1.4%		0.0%
Access to Music	9	0.1%	£38,203	0.1%	10	0.1%	£50,411	0.1%
Aylesbury College	1	0.0%	£1,752	0.0%		0.0%		0.0%
Barking College	1	0.0%	£2,605	0.0%	1	0.0%	£6,970	0.0%
Bedford College	8	0.1%	£14,789	0.0%	5	0.1%	£11,690	0.0%
Bexhill College	1	0.0%	£4,225	0.0%		0.0%		0.0%
Bishop Burton College		0.0%		0.0%	1	0.0%	£5,469	0.0%
Blackpool and The Fylde College	3	0.0%	£4,874	0.0%	1	0.0%	£1,670	0.0%
Bournemouth & Poole College	1	0.0%	£1,813	0.0%	2	0.0%	£5,923	0.0%
Braintree College	9	0.1%	£36,511	0.1%	7	0.1%	£28,950	0.1%
Bridgwater College		0.0%		0.0%	1	0.0%	£5,431	0.0%
Brooklands College	1	0.0%	£5,367	0.0%		0.0%		0.0%
Brooksbury Melton College	1	0.0%	£6,683	0.0%		0.0%		0.0%
Broxtove College, Nottingham	2	0.0%	£1,435	0.0%		0.0%		0.0%
Cambridge Regional College	251	3.1%	£821,535	2.5%	180	2.4%	£926,971	2.7%
Central Sussex College	2	0.0%	£16,664	0.1%		0.0%		0.0%
Chelmsford College		0.0%		0.0%	2	0.0%	£8,171	0.0%
City and Islington College	1	0.0%	£6,365	0.0%	1	0.0%	£4,183	0.0%
City College Brighton and Hove	3	0.0%	£11,745	0.0%	1	0.0%	£5,493	0.0%
City College, Manchester		0.0%		0.0%	1	0.0%	£4,441	0.0%
City of Bristol College	1	0.0%	£870	0.0%	1	0.0%	£6,020	0.0%
City of Westminster College	1	0.0%	£3,802	0.0%	1	0.0%	£3,943	0.0%
Colchester Institute	194	2.4%	£818,986	2.5%	160	2.1%	£559,987	1.6%
College of West Anglia	74	0.9%	£124,062	0.4%	57	0.8%	£211,850	0.6%
Cornwall College	2	0.0%	£5,104	0.0%		0.0%		0.0%
Derby College	3	0.0%	£3,442	0.0%	4	0.1%	£4,787	0.0%
Doncaster College	1	0.0%	£306	0.0%		0.0%		0.0%
East Berkshire College		0.0%		0.0%	1	0.0%	£449	0.0%
East Norfolk Sixth Form College	196	2.4%	£896,527	2.8%	248	3.3%	£1,147,164	3.3%
East Surrey College	1	0.0%	£7,703	0.0%		0.0%		0.0%
Easton College	34	0.4%	£217,125	0.7%	32	0.4%	£216,780	0.6%
Epping Forest College		0.0%		0.0%	1	0.0%	£4,950	0.0%
Essex County Council	1	0.0%	£142	0.0%	3	0.0%	£2,243	0.0%
Fareham College	1	0.0%	£5,425	0.0%		0.0%		0.0%
Fashion Retail Academy		0.0%		0.0%	2	0.0%	£9,291	0.0%
Godalming College	1	0.0%	£4,968	0.0%		0.0%		0.0%
Grantham College	1	0.0%	£3,389	0.0%		0.0%		0.0%
Great Yarmouth College of Further Education	90	1.1%	£344,111	1.1%	86	1.1%	£281,694	0.8%
Greenwich Community College	1	0.0%	£873	0.0%		0.0%		0.0%
Guildford College of Further and Higher Education		0.0%		0.0%	1	0.0%	£5,869	0.0%
Harlow College	1	0.0%	£2,459	0.0%	2	0.0%	£7,884	0.0%
Hartpury College	6	0.1%	£33,932	0.1%	1	0.0%	£7,877	0.0%
Hastings College of Arts and Technology		0.0%		0.0%	1	0.0%	£5,526	0.0%
Haveing College of Further and Higher Education		0.0%		0.0%	1	0.0%	£4,688	0.0%
Herefordshire College of Technology	1	0.0%	£2,505	0.0%	1	0.0%	£6,097	0.0%
Hertford Regional College	1	0.0%	£4,983	0.0%	1	0.0%	£5,497	0.0%
Hills Road Sixth Form College	51	0.6%	£215,267	0.7%	51	0.7%	£235,223	0.7%
Kingston Maurward College	1	0.0%	£514	0.0%		0.0%		0.0%
Lancaster and Morecambe College		0.0%		0.0%	1	0.0%	£1,658	0.0%
Leeds College of Art and Design	1	0.0%	£5,672	0.0%	2	0.0%	£11,764	0.0%
Leeds College of Music	1	0.0%	£8,332	0.0%		0.0%		0.0%
Leicester College	1	0.0%	£302	0.0%		0.0%		0.0%
Liverpool Community College	1	0.0%	£4,933	0.0%		0.0%		0.0%
Long Road Sixth Form College	68	0.8%	£277,045	0.9%	85	1.1%	£373,452	1.1%
Lowestoft College	1,037	12.9%	£4,221,831	13.0%	1,045	13.9%	£4,602,832	13.4%
Manchester College of Arts and Technology	5	0.1%	£3,989	0.0%	4	0.1%	£583	0.0%
Moulton College F.E.C	3	0.0%	£15,035	0.0%	4	0.1%	£23,722	0.1%

Provider	06/07 F05				07/08 F01			
	Learners		Funding		Learners		Funding	
	numbers	%	£	%	numbers	%	£	%
Myerscough College	2	0.0%	£10,578	0.0%		0.0%		0.0%
Newbury College		0.0%		0.0%	1	0.0%	£6,832	0.0%
Newcastle-under-Lyme College	4	0.0%	£488	0.0%		0.0%		0.0%
Newham College of Further Education	1	0.0%	£4,639	0.0%	2	0.0%	£8,531	0.0%
Norfolk County Council	8	0.1%	£2,072	0.0%	4	0.1%	£9,363	0.0%
North Devon College		0.0%		0.0%	1	0.0%	£17,128	0.0%
North Hertfordshire College	11	0.1%	£3,721	0.0%	3	0.0%	£1,285	0.0%
North West Kent College of Technology	3	0.0%	£1,234	0.0%	2	0.0%	£422	0.0%
Norwich City College of Further and Higher Education	289	3.6%	£1,168,160	3.6%	245	3.3%	£1,038,243	3.0%
Otley College of Agriculture and Horticulture	720	9.0%	£4,284,310	13.2%	662	8.8%	£4,408,688	12.8%
Oxford and Cherwell College	1	0.0%	£6,117	0.0%	2	0.0%	£9,222	0.0%
Paston College	1	0.0%	£4,524	0.0%		0.0%		0.0%
Peterborough City Council	9	0.1%	£6,680	0.0%	5	0.1%	£1,239	0.0%
Peterborough Regional College	2	0.0%	£2,916	0.0%		0.0%		0.0%
Plymouth College of Further Education	3	0.0%	£6,432	0.0%	1	0.0%	£2,510	0.0%
Pre-school Learning Alliance		0.0%		0.0%	1	0.0%	£1,706	0.0%
Preston College		0.0%		0.0%	1	0.0%	£5,607	0.0%
Reaseheath College	2	0.0%	£9,706	0.0%	2	0.0%	£9,067	0.0%
Redbridge College		0.0%		0.0%	4	0.1%	£15,155	0.0%
Sheffield College		0.0%		0.0%	1	0.0%	£827	0.0%
Sixth Form College, Colchester	400	5.0%	£1,910,026	5.9%	429	5.7%	£2,150,242	6.3%
South Tyneside College	5	0.1%	£10,403	0.0%		0.0%		0.0%
South Yorkshire Training Trust	2	0.0%	£5,121	0.0%		0.0%		0.0%
Sparsholt College, Hampshire	6	0.1%	£30,807	0.1%	7	0.1%	£39,908	0.1%
Stamford College	1	0.0%	£7,313	0.0%		0.0%		0.0%
Stroud College of Further Education	1	0.0%	£92	0.0%		0.0%		0.0%
Suffolk College	2,285	28.5%	£9,504,901	29.4%	2,362	31.5%	£10,492,449	30.5%
Suffolk County Council	48	0.6%	£16,027	0.0%	3	0.0%	£1,357	0.0%
Sussex Downs College	2	0.0%	£8,903	0.0%		0.0%		0.0%
Telford College of Arts and Technology	3	0.0%	£2,498	0.0%	1	0.0%	£449	0.0%
Thames Valley University	1	0.0%	£1,794	0.0%	1	0.0%	£4,573	0.0%
The London College of Beauty Therapy Ltd	1	0.0%	£5,063	0.0%		0.0%		0.0%
Thurrock and Basildon College	1	0.0%	£209	0.0%		0.0%		0.0%
Tresham Institute		0.0%		0.0%	1	0.0%	£2,075	0.0%
Walford and North Shropshire College	2	0.0%	£553	0.0%		0.0%		0.0%
Waltham Forest College	1	0.0%	£6,598	0.0%		0.0%		0.0%
Warwickshire College, Royal Leamington Spa, Rugby	7	0.1%	£27,491	0.1%		0.0%		0.0%
West Kent College	1	0.0%	£901	0.0%		0.0%		0.0%
West Nottinghamshire College	1	0.0%	£6,768	0.0%		0.0%		0.0%
West Suffolk College	1,651	20.6%	£7,038,944	21.7%	1,636	21.8%	£7,247,757	21.1%
Wirral Metropolitan College	1	0.0%	£193	0.0%		0.0%		0.0%
Worcester College of Technology	1	0.0%	£1,074	0.0%		0.0%		0.0%
Worcester Sixth Form College	1	0.0%	£3,297	0.0%		0.0%		0.0%
Workers' Educational Association	4	0.0%	£903	0.0%	3	0.0%	£391	0.0%
Writtle College	14	0.2%	£71,451	0.2%	14	0.2%	£71,179	0.2%
Yeovil College		0.0%		0.0%	1	0.0%	£3,602	0.0%
York College	1	0.0%	£936	0.0%		0.0%		0.0%
<b>Grand Total</b>	<b>8,011</b>	<b>100.0%</b>	<b>£32,382,043</b>	<b>100.0%</b>	<b>7,510</b>	<b>100.0%</b>	<b>£34,361,533</b>	<b>100.0%</b>