



Leading learning and skills

**A Baseline Study of
Post 16 Education and Training
in Great Yarmouth and Lowestoft**

DRAFT REPORT

Draft 2 – Published 18th September 2007

NOTES

This report has been prepared by the Learning and Skills Council, with input from local education and training providers from Great Yarmouth and Lowestoft as well as national data sources.

This baseline document is to be regarded as a *draft* and a work in progress. It will therefore be subject to change as further data is collected. This document is for circulation, as an initial discussion and consultation document, only to those education and training providers involved in the initial stages of the post 16 review process. As new data becomes available, this document will be revised.

An attempt has been made to find the most recent data available that can be compared across the review area. In some instances, 2005/6 data is the latest local authority data released as 2006/7 final schools data is awaited and will not be available until late October.

It has not always been possible to source directly comparable data for the two towns and for all learner groups and providers, but an attempt has been made to do so and to represent this fairly and without judgement.

Comments on this document are welcomed and these, together with any additional information should be provided to:

Lynne Tabone
Suffolk Learning and Skills Council
Felaw Maltings
42 Felaw Street
Ipswich IP2 8SJ
Tel: 01473 883061
Email: lynne.tabone@lsc.gov.uk

CONTENTS

	Page
1 The Context for this Report	5
2 The Local Socio-Economic Context	7
2.1. Population Trends	7
2.2. Deprivation	10
2.3. Unemployment	11
2.4. Employment Patterns	12
2.5. New Economic Development Opportunities	13
2.6. Transport Links	14
3 Participation in Education	1155
3.1. Participation of Young People aged 16-18 in Learning	16
3.2. Participation of Adults in Learning	16
4 How Post 16 Education is Organised	18
4.1. Secondary Schools	18
4.2. Independent and Faith Schools	19
4.3. Special Needs Education	19
4.4. 6 th Form Provision	20
4.5. General Further Education Colleges	20
4.6. Training Providers	21
4.7. Adult and Community Learning	22
4.8. Train to Gain	22
5 Current Curriculum Offer – The Educational Landscape	23
5.1. Sixth Form Learner Numbers	23
5.2. The Current Sixth Form Curriculum Offer	23
5.3. Special Schools Curriculum	26
5.4. FE College Learner Numbers	27
5.5. FE Courses	27
5.6. Learner Numbers Accessing Work-Based Learning	29
5.7. The Work-Based Learning Curriculum Offer	30
5.8. The Adult and Community Learning Curriculum Offer	30
6 Learner Mobility	33
6.1. Travel to Learn: Schools	33
6.2. Travel to Learn: FE College	34
6.3. Travel to Learn: E2E Learners	35
7 Learner Outcomes	37
7.1. Schools Data	38
7.2. FE College Achievements	41
7.3. Work-Based Learning Success Rates	42
7.4. Positive Progressions for Entry to Employment	42
7.5. Adult Qualifications	43

	7.6. Skills for Life Qualifications	44
8	APPENDICES	45
	Appendix 1: The Post 16 Review Area & Maps	46
	Appendix 2: Transport Links	48
	Appendix 3: Great Yarmouth and Lowestoft Curriculum Matrix	53

1. THE CONTEXT FOR THIS REPORT

The Learning and Skills Council in the East of England plans to lead a review of Post-16 education and training for the Great Yarmouth and Lowestoft area in partnership with Norfolk and Suffolk County Councils. Through the review the LSC seeks to develop a strategy that will provide the best possible future opportunities for learners of all ages and will enable effective future capital investment, including through the Building Schools for the Future Programme (BSF)¹. For more information about the review please contact:

Lynne Tabone
Learning and Skills Council, Suffolk
Tel: 01473 883061
Email: lynne.tabone@lsc.gov.uk

The area covered by the review comprises the communities of Great Yarmouth & Lowestoft and the immediately surrounding area, plus the strip between the two towns, but *not* the wider rural hinterland served by the three colleges in the area. **Appendix 1** contains review area maps and wards. It is recognised that there is a flow of learners between the towns and hinterland and this will be taken into account in the review and in scoping options resulting from the review.

This report provides baseline data and background information regarding current provision for post 16 education and training in the Great Yarmouth and Lowestoft areas. The purpose of the report is to draw together information from a range of sources to inform the planned review of Post-16 provision across these two areas. The report has been compiled from a range of sources including the Office for National Statistics, local authority data, Connexions, and data held by the LSC as well as information gathered through interviews with providers based in the area.

The objectives of the report are to:

- Provide, in one document, headline information regarding post-16 education and training in the areas of Great Yarmouth and Lowestoft.
- Identify areas that require further investigation and analysis to enable work to be commissioned to gather this additional information.

¹ The Building Schools for the Future (BSF) programme offers an opportunity for the area to transform its education system and move it forward into the 21st century. For the East of Norfolk, this will not come into effect until 2013 with the plan due around 2010. In Suffolk however, it involves some £500-600 million investment in new school buildings. Alongside post 16 projects such as the South West Ipswich and South Suffolk Centre, there is a real opportunity for Suffolk to integrate the 14-19 agenda along with those of Personalisation Skills and Inclusion into one seamless pathway 3-19. Howard Lay has been seconded from one of the county secondary schools to lead on developing the curriculum vision and a BSF Project Director is about to be appointed.

- Provide background information to inform the development of key priorities and future options for the review.

The document is not part of the review process itself and therefore does not seek to make comparisons or judgements relating to providers or the area; neither does it propose future options or recommendations. That is the purpose of the Post 16 Review itself, which will be undertaken in partnership with local providers and stakeholders.

2. THE LOCAL SOCIO-ECONOMIC CONTEXT

Great Yarmouth and Lowestoft are coastal towns located on the East coast of England and sited on opposite sides of the Norfolk/Suffolk border. With Great Yarmouth located in the south eastern tip of Norfolk and Lowestoft in the North eastern tip of Suffolk, the two towns are closer to each other than they are to their respective county capitals of Norwich and Ipswich. The rivers Yare and Waveney and the Norfolk and Suffolk broads further separate Great Yarmouth and Lowestoft from other parts of their counties and limit easy access within the towns. Transport infrastructure is a key, and potentially limiting, issue.

In common with most coastal towns around Britain, tourism continues to be an economically important sector for Great Yarmouth and Lowestoft and the seasonality of work presents significant economic and social challenges.

Both towns have a similar profile of issues, similar populations and economic deprivation factors. They have been designated as an area for joint economic development and some urban regeneration work is currently underway, managed by First East. Other co-located development options are being reviewed by the local councils. The post 16 review also covers both towns because of the co-location and similarity of educational / employment issues.

2.1. Population Trends

Table 1: Predicted population growth in Great Yarmouth and Lowestoft:

Area	2001 Census	2007 (est)	2010 (est)	2015 (est)	2020 (est)
Great Yarmouth Borough (all ages)	90,810	94,600	96,600	100,000	103,500
Great Yarmouth Borough (15-19 years)		5,900	5,800	5,600	5,400
Waveney ² (all ages)	112,342	117,300	120,100	123,900	129,900
Waveney ² (15-19 years)		7,300	7,300	6,900	6,700

Source: These projections were prepared by the Office for National Statistics in 2004

Note: Over half of the Waveney population lives in the Lowestoft area

The rate of population growth in both areas was nearly twice the national average over a 20 year period from 1984 to 2004 (12% as compared to 6.8%), but this has slowed down and, from 1994-2004 has been slower than the rate of growth across

² It was not possible to source Lowestoft-only data. The Suffolk data covers Waveney as a whole.

the East of England as a whole, (4.1% compared to 3.9% across England)³. The data indicates that the population in the review area continues to rise slowly.

2004 mid year population estimates³ show the breakdown of genders in both towns was as follows:

- Great Yarmouth: 47,500 female residents and 44,800 male residents.
- Waveney²: 59,200 female residents and 55,200 male residents

73% of Great Yarmouth Borough's population live in the built up area of Great Yarmouth. 71% of Great Yarmouth wards are classified as urban, 12% as town and fringe and 18% as village⁴.

An Ageing Population

The age structure of the adult population base across both towns is different to that nationally³. Figures indicate that Great Yarmouth have 41% and Lowestoft 42% of their local residents recorded as aged 50 or above, compared with only 34% across England. The older age group is consistent with other coastal areas, which are often preferred as retirement locations.

To illustrate the future trend with regard to the ageing population: in Waveney, assuming working age is from 16 to 64, the working age population at the 2001 Census was 66,328, followed by a decrease in 2005 to 67,900, extrapolating this to 2021 will indicate a working age population of 61,400. The implications of this are an increased demand on public services such as health and social care, with a consequent impact on employment trends for the area.

The above data shows that, although the overall population in the area continues to increase slowly, there has been a net outflow of people in the working age population due to the limited work opportunities within the area and the 16-18 cohort will decline markedly between 2008 and 2018. There is significant regeneration being undertaken through 1st East and a large number of planned homes to be built around Lowestoft, particularly in the Colton Colville area, however this is linked to expansion demand, mainly from those already resident in Waveney and does not indicate any increase in the numbers of young people in the area.

School Populations at Key Stages 3 and 4

Overall, numbers of students in Great Yarmouth and Lowestoft schools, following through from key stage 3 into to key stage 4 from year 9 to year 11, have held relatively stable over the last three years.

³ Source: Mid Year Population Estimates, Office for National Statistics, 2004

⁴ Source: Norfolk County Council, *Deprivation in Norfolk*, 2004

http://www.norfolk.gov.uk/consumption/groups/public/documents/general_resources/ncc038582.pdf

Table 2: The numbers of learners in the 16-19 age group in the high schools in the review area.

	2003/4			2004/5			2005/6		
	KS 3	Key Stage 4		KS 3	Key Stage 4		KS 3	Key Stage 4	
	Y9	Y10	Y11	Y9	Y10	Y11	Y9	Y10	Y11
Caister High School	154	172	144	157	154	160	166	158	155
Cliff Park High School	220	230	218	232	221	229	230	217	219
Flegg High School	190	185	173	176	191	187	215	174	190
Great Yarmouth High School	182	199	185	206	195	179	221	200	175
Lynn Grove High School	219	219	212	240	220	212	222	241	214
Oriel High School	149	153	153	161	140	137	154	157	151
Benjamin Britten High School	232	233	215	238	233	236	239	240	231
The Denes High School	215	227	204	231	210	215	242	229	206
Kirkley Community High School	377	378	366	349	374	383	375	355	365
Sir John Leman High School (Beccles)	366	367	353	336	362	366	375	330	354
TOTALS	2,304	2,363	2,223	2,326	2,274	2,670	2,439	2,301	2,251

Source: Local Authority Data

Note: While the full Sir John Leman High School catchment is not included in review area, the part of the catchment covering Carlton Colville, etc is. The school's data has therefore been added here, although it has not been possible to separate out only the learners in the affected wards.

The increase in housing in the areas to the south of Lowestoft will lead to a rise in the number of learners actually resident within the relevant catchment area, with a resulting change to the schooling required. This is pattern that has been developing for some time.

Ethnicity

Yarmouth's ethnic make-up is 98.6% white with growing Lithuanian, Polish and Portuguese communities as well as an official traveller and gypsy transit site. Black and minority ethnic residents make up 1.4% of the population, mixed race 0.6%, Asian or Asian British 0.4%, Chinese or other 0.2%⁵.

The Waveney area, (which includes Lowestoft) is 97.35% White British. Black and minority ethnic residents make up 2.65% of the population: Black or Black British 0.21%, mixed race 0.53%, Asian or Asian British 0.21%, Chinese or other 0.3%⁵. There is a small but increasing Eastern European migrant population, of which Polish Migrants form the largest group.

⁵ Source: 2001 Census, Office for National Statistics

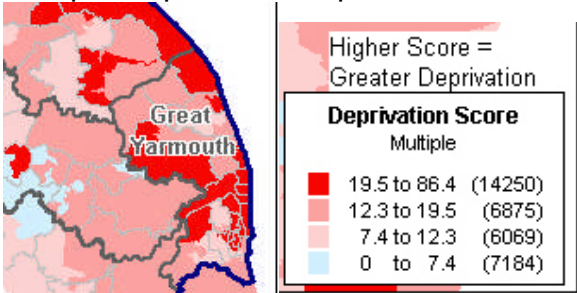
2.2. Deprivation

The Index of Multiple Deprivation (IMD) is a national ranking of all Super Output Areas (SOAs), where a rank of 1 is the most disadvantaged. The index is based on information collected within 7 domains listed below with the different weighting given to each in brackets:

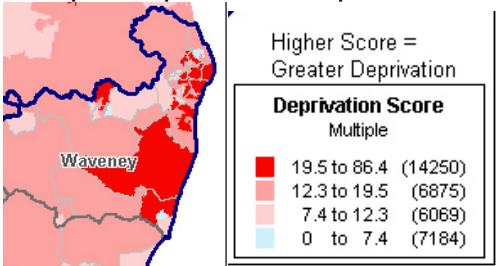
1. Income deprivation (22.5%)
2. Employment deprivation (22.5%)
3. Health deprivation and disability (13.5%)
4. Education, skills and training deprivation (13.5%)
5. Barriers to housing and services (9.3%)
6. Crime (9.3%)
7. Living Environment deprivation (9.3%)

Great Yarmouth is the fifth most deprived area in the country, in terms of social, economic, education and safety factors⁶. The borough comprises the urban area of Great Yarmouth itself, together with 21 surrounding parishes. At the time of the 2001 Census, the borough had an area of 182km² of which 26km² was in the urban area and 156km² in the surrounding parishes.

Multiple Deprivation Map for Great Yarmouth⁶



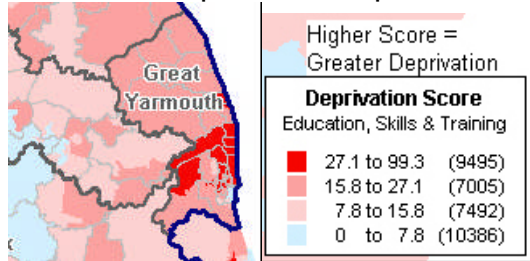
Multiple Deprivation Map for Waveney⁶



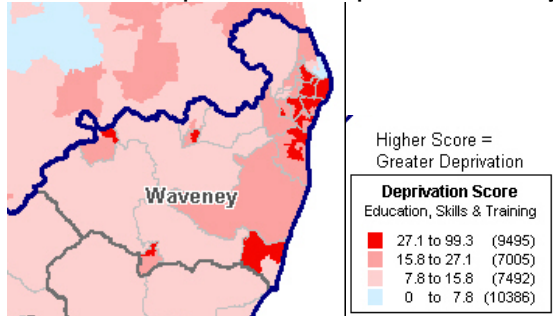
Large areas of Lowestoft show above average levels of deprivation, including 11 SOAs in the 20% most deprived in England⁶. These are mainly concentrated along the seafront to the east, around the town centre. Four wards in Lowestoft have over 10% of the population in receipt of income support and over half of the population (56%) do not have a qualification at Level 2 or above.

⁶ Source: Indices of Multiple Deprivation 2004, Norfolk and Suffolk

Education Deprivation Map for Great Yarmouth⁶



Education Deprivation Map for Waveney⁶



The indicators used to calculate the education score are:

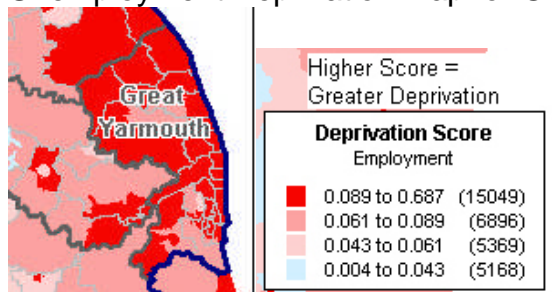
1. Average points score of pupils at Key Stage 2 (end of primary)
2. Average points score of pupils at key stage 3
3. Average points score of pupils at Key stage 4 (GCSE/GNVQ – best of eight results)
4. Proportion of young people not staying on in school or non-advanced further education above 16
5. Secondary school absence rate
6. Proportion of those aged under 21 not entering higher education

In general there is a correlation between high NEET figures (those not in education, employment or training) and areas of multiple disadvantage and poor educational achievement.

2.3. Unemployment

As at June 2006, Great Yarmouth Borough had the highest rate of unemployment both in Norfolk and in the East of England as a whole, standing at 2,276 in total, which is 4.2% of the resident working age population⁷.

Unemployment Deprivation Map for Great Yarmouth⁶



The indicators used to calculate the employment score are:

1. Unemployment Claimant Count (JUVOS) of women aged 18-59 and men aged 18-

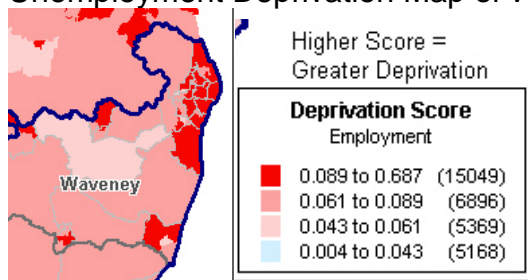
⁷ Source: DWP, NOMIS, June 2006

64;

2. Incapacity benefit claimants women aged 18-59 and men aged 18-64;
3. Severe disablement allowance claimants, women aged 18-59 and men aged 18-64;
4. Participants in New Deal for the 18-24's who are not included in the claimant count;
5. Participants in New Deal for the 25+ who are not included in the claimant count;
6. Participants in new deal for lone parents aged 18 and over.

Waveney's unemployment rate is the second highest in Suffolk (just behind Ipswich) at 2,115 in total, which is 3.3% of the resident working age population⁷. An increasing proportion of these have been out of work for more than two years.

Unemployment Deprivation Map of Waveney⁶



2.4. Employment Patterns

Both Great Yarmouth and Lowestoft offer a high ratio of low-paid, low-skilled and seasonal work due to the nature of the main industries in the area.

The per capita wages for 2005 in Great Yarmouth were £357 per week, in Waveney £362 per week, compared to a regional and national average of £459 and £439 respectively⁸.

Roughly 25% of the working age population across both Great Yarmouth and Waveney is employed in low-skilled professions such as elementary / routine jobs and processes / plant / machine operations⁹.

With regard to broad industrial sectors, Distribution, Retail, Hotels and Restaurants accounted for more than 29% of the jobs in the local economy for Great Yarmouth and 27% for Waveney¹⁰ in 2003. Within this, Tourism alone accounted for 15% of Great Yarmouth's employment (13,700 people and, with 5 million visitors a year, tourism contributes £426m to the local economy) and 10% of Waveney's and the sector grew by nearly 12% for Yarmouth and 10% for Waveney in employment terms between 1999 and 2003⁹.

Public Administration, Education and Health accounted for 30% of Great Yarmouth's employment and 22% of Waveney's over the same period⁹, having expanded by 12% from 199 to 2003.

⁸ Source: Annual Survey of Hours and Earnings, 2005

⁹ Source: Local Area Labour Force Survey, 2004, NOMIS

¹⁰ Source: Annual Business Enquiry Data, 2003

Manufacturing, a key sector for the Waveney economy, accounted for more than 22% of the area's employment. But, employment in manufacturing declined by 9% over the same period⁹.

Port and Marine Activity sectors will increase in the future as the Yarmouth Outer Harbour takes shape, following the decline in activity in this sector experienced over the past eight years.

2.5. New Economic Development Opportunities

The Yarmouth Outer Harbour development will affect all those who live and work in and around Yarmouth. Jobs, learning and skills development opportunities and needs will increase and the Local Strategic Partnership (LSP), Learning Systems Group (LSG) and other local learning and economic forums are looking at plans for the future now this has got the go-ahead. This will be one of the biggest new port developments to go ahead in the UK in recent years. The development will provide deep water facilities capable of taking a new generation of much bigger vessels and will open up new trade possibilities, including the potential for a new North Sea ferry crossing. This will be a significant catalyst in the whole region's economic growth.

Economic analysts also believe a new deepwater port could enable the Eastern region to benefit from a increased wind farm construction, mostly focused on the Greater Wash and Thames Estuary and a convenient distance to Yarmouth.

The East of England is a centre for offshore wind energy, with Lowestoft College focusing on this area. A new Offshore Renewable Energy Centre (a partnership between Suffolk County Council, EEDA, Renewables East and Waveney District Council) has recently been built in Lowestoft and First East are developing a wider 'Power Park' as part of their regeneration of the area.

In the Great Yarmouth area, there are around 350 businesses involved in the energy industry. The Scroby Sands Wind Farm in Norfolk is a 30 Turbine, off-shore wind farm and is currently attracting 2,000 visitors a week. The recently opened Information Centre in Great Yarmouth is an important visitor attraction. Nearby is the Blood Hill Wind Farm, Great Yarmouth, located in West Somerton, which has two onshore wind turbines which provide 1.5 Mega Watts of power and were built in 2000 by Ecotricity. Renewable energy is a new industry set to create a new economy in which Norfolk and Suffolk stand to gain greatly, particularly from offshore wind energy generation. This could bring in millions of pounds of investment contributing to the local economy and could provide thousands of jobs across the region. Offshore wind farms have the potential to rejuvenate the East areas of Norfolk and Suffolk that have recently suffered due to the decline in the fishing and oil and gas industries.

It is estimated that more than £8billion will be invested around the East of England coastline over the next 10 years on offshore renewable energy and the region is

committed to supplying 14% of its power from renewable energy sources by 2010, so there are significant opportunities for the area.

2.6. Transport Links

Direct transport links from Lowestoft to Great Yarmouth are limited. There is no direct rail link, one has to travel into Norwich and out again or change at Reedham / Cantley / Brundall (a journey taking approximately 1.5 hours).

Road travel is a better option with the A12 the main link between the two towns. The A12 connects the East Coast with London and Essex, but is a one-lane road for much of the journey through Suffolk. Between Lowestoft and Great Yarmouth the road is mainly dual carriageway. The other main road connexions are the A47 from Great Yarmouth to Norwich; the A143 Great Yarmouth to Bury St Edmunds, travelling South West and passing through Bungay and close to Beccles; The A146 from Lowestoft to Norwich.

There two bus routes linking the two town centres, with buses leaving half-hourly at peak times and the most direct journey takes approximately 40-45 minutes. This is probably the cheapest and least time-consuming option. However, recent road works in and around Lowestoft have affected travel times.

There are a number of bespoke bus services provided by educational facilities and training providers to transport learners to schools, colleges, etc. in the area.

Appendix 2 has more detail on transport links maps. **Section 6: Learner Mobility** has more information on the flow of learners across the review area

3. PARTICIPATION IN EDUCATION

3.1. Participation of Young People Aged 16-18 Years in Learning

Great Yarmouth

Across Norfolk, around 75% of young people aged 16-18 were engaged in education and training in 2004. This was below the regional average of 79% and the lowest in England (along with Essex). There was also a reduction in the participation in learning between Years 12 and 13, which equated to about 11% (a proportion broadly in line with the East of England region). The take-up of work-based learning opportunities was however slightly above the regional average.

This trend is reflected in Great Yarmouth and is shown in the low numbers of learners achieving Level 2 and Level 3 qualifications and progressing to higher education. Great Yarmouth also has a correspondingly high level of young people not in education employment or training (NEET).

Lowestoft

Historically the participation of young people in education and training after leaving school has been lower in Lowestoft than in Suffolk as a whole and also lower than the England average. However the most recent Connexions activity survey (November 2006) indicates that for the first time participation in Lowestoft is above average levels across Suffolk. This improvement reflects an increase of 5.4% compared with the 2005 activity survey, with more young people continuing their learning either in school sixth forms or in an FE college.

This increase in participation at school and college has resulted in a continuation of the decline in young people Not in Education Employment or Training (NEET) and those in work without training. However the proportion of young people who are in the NEET group remains at the highest level across Suffolk in Lowestoft and is a priority for further focused activity, especially when this data is considered alongside the decline in participation in non-employed government support training (e.g. Entry to Employment). The decline in participation in work-based learning and progression to higher education study in the area are also cause for concern.

An analysis of the activity of different age groups within the 16-18 cohort indicates a marked improvement in the proportion of young people aged 17 years in learning, rising from 69% in 2005 to 80% in 2006. This is as a result of more young people aged 17 years being retained in school sixth form (+5%) and in FE college (+8%) in 2006.

Table 3: Destinations of year 11 learners in Great Yarmouth and Lowestoft Schools 2006

	Lowestoft		Suffolk		Great Yarmouth		Norfolk	
	No	%	No	%	No	%	No	%
1) School sixth form	336	44	3,873	48	12	1	3,018	35
2) FE/Sixth form College	283	37	2,504	31	805	77	3,808	44
3) Full time employment with training	30	3	366	4	74	7	777	8
4) Non employed training (e.g. PLP/E2E)	16	2	109	1	42	4	173	1
5) part time employment and learning less than 16 hours per week with no training	38	5	516	6	10	09	82	0.9
6) Unemployed/not available	51	6	564	7	70	6	576	6
7) no response	5	0.7	190	2	32	3	256	2
TOTAL Year 11 Learners	759		8122		1045		8690	
Numbers in structured learning (rows 1-4 above)	665	88%	6852	84%	933	89%	7776	89%
NEET (young people not in education, employment or training)		11.6%		8.3%		10.2%		7.3%

Source: Norfolk and Suffolk Connexions Destinations Surveys 2006

10.2% of young people living in Yarmouth are registered as NEET¹¹ (not in education, employment or training). The NEET levels in the deprived parts of Great Yarmouth are the worst in Norfolk, reflected in the number of NEET projects underway with Connexions in the area.

3.2. Participation of Adults in Learning

Table 4: Participation of those aged 16-69 in learning

Area	Participating in any learning	Participating in taught learning
Norfolk	63%	41.7%
Suffolk	60.7%	40.6%
National Average	69.1%	47.7%

Source: Annual Population Survey AP05, DfES

Norfolk has the highest percentage of young people in the region following a countable Skills for Life qualification. In terms of adult learners, Norfolk secured a 12% increase in countable qualifications between 2004/05 and 2005/06 (Yarmouth experienced an increase of 4% to 956). The LSC Local Needs Assessment,¹² in January 2007, shows that 18% of the working age population in Great Yarmouth had no qualifications, and only 53.% had qualifications of Level 2 or above. In Waveney, 20% of the working age population had no qualifications, and 72% had

¹¹ Source: Children's Services Norfolk East Area NEET data

¹² Source: LSC Local Needs Assessment Suffolk and Norfolk January 2007

qualifications of Level 2 or above. The proportion of adults qualified at level 2 or above in Lowestoft is the second lowest in Suffolk and is below the England average. The percentage of unqualified inhabitants and those with a highest qualification of Level 1 is particularly high.

There are particular needs for basic skills training in numeracy with 65% of adults in Great Yarmouth and 50% in Waveney having entry level needs in this area. In general entry Level and Level 1 support in Literacy, Numeracy and ESOL is a key priority for Great Yarmouth and Lowestoft, with adult participation being constrained by poor basic skills.

The percentage of those in Lowestoft with higher level qualifications (Level 4/5) is exceptionally low. This could be partly the result of historic low participation rates in learning for young people in the area but is also exacerbated low participation in learning among the adult population.

Table 5: FE Adult Participation over 3 years

It should be noted that this table refers to LSC-funded activity only and does not reflect overall participation. It does not include learning funded through ESF or learner-paid courses.

	04/05 Actual	05/06 Actual	06/07 Planned	Actual Change 04/05 to 05/06		Planned Change 05/06 to 06/07	
				no	%	no	%
Great Yarmouth College	3,984	2,343	2,352	-1,641	-41.19	+9	+0.3
Norfolk	39,826	27,992	23,882	-11834	-29.71	4110	-14.80
Lowestoft College	3,652	2,839	1,359	-813	-28.6	-1,480	-52
Suffolk	27,904	23,258	9,018	-4646	-23.5	14,240	-61
East of England	247,185	194,034	164,054	-53,151	-21.5	-29,980	-15.45

Source: LSC East of England Planning & Performance Sharepoint Site
Note: Final 2005/6 numbers for all of the above will not be available nationally until November

Data for participation in FE among adults in Lowestoft indicates a decline in participation rates between 2005 and 2006. This trend is similar to that across Suffolk and the East of England and reflects a reduction in the availability of funding for adults.

4. HOW POST 16 EDUCATION IS ORGANISED

Post 16 full-time mainstream education in the area covered by this review is provided by a wide range of educational institutions, community organisations and private training providers.

The accessibility of programmes in all of the institutions and services mentioned below is dependent upon effective transport links, which has been mentioned above as an issue for the review area.

4.1. Secondary Schools

There are six 11/12–16 maintained high schools in Great Yarmouth Borough:

- Cliff Park High School (specialist sports status)
- Great Yarmouth High School (special technology college status)
- Oriel High School (maths and computing specialist status)
- Caister High School (specialist arts college status)
- Flegg High School (specialist business and enterprise college status)
- Lynn Grove High School (specialist technology college status)

Norfolk schools have recently gone through a reorganisation consultation and planning process and the agreed changes are currently being implemented. All secondary school in Great Yarmouth Borough will take learners aged from 11 to 16 years from September 2008.

There are three 13-18 maintained high schools in the Lowestoft area:

- Benjamin Britten High School (special vocational and technology status)
- The Denes High School (specialist business and enterprise college status)
- Kirkley Community High School (specialist sports status)

There is also an additional school affected by this review although not actually sited within the boundaries of the review area:

- Sir John Leman High School in Beccles (specialist technology college status)

The catchment area for this school includes parts of the south Lowestoft review area. The review area does not however go out so far as to incorporate Beccles.

It should be noted that a school reorganisation is underway in Suffolk which will change the current three-tier system (5-9 years, 9-13 years and 13-18 years) to a system delineating primary as 5-11 years and secondary as 11-16 (or possibly 18) years. This review will fit into the schedule of those changes

There are formal arrangements in place between Norfolk and Suffolk Local Authorities for children at two Norfolk primary schools on the Waveney border to progress to secondary education in Suffolk - Gillingham Primary School children progress to Beccles High School and children at Earsham Primary progress to Bungay High School. Whilst not directly in the review area, these schools are part of the wider impact area.

There is some other movement across the border in both directions which is not through formal arrangement funded by the responsible county councils. A number of learners from North Suffolk attend schools on the Norfolk side of the border and progress through the Norfolk secondary system and into East Norfolk Sixth Form College.

4.2. Independent Schools and Faith Schools

No information has been included in this report on the structure or curriculum of independent schools or faith schools that might be accessible to learners from the Great Yarmouth and Lowestoft areas.

4.3. Special Needs Education

Special educational needs (SEN) provision across the review area is covered by:

- John Grant Special School in Great Yarmouth (for severe learning difficulties)
- Ashley School
- Warren School (no post 16 provision)

Additionally:

- Great Yarmouth area offers Learning Support Units at Flegg, Caister and Oriel High Schools.
- Brooklands Centre PRU in Gorleston on Sea serves the whole Great Yarmouth borough.
- Old Warren House Pupil Referral Unit serves the Lowestoft area.

Norfolk

Norfolk County Council reviewed its special educational needs provision in 2006 which resulted in a new strategy for SEN for 2007-2010. Work is currently underway to reorganise SEN provision with consultation on the proposals is planned for autumn 2007, with transition arrangements likely to begin in April 2008.

The LSC's Improving Choice Pathfinder has been operating in the region since 2005. This initiative offers young people between the ages 16-25 with complex learning difficulties the opportunity to access further education and work based learning across the county. The programme meets individual learning needs by creating a supported bespoke package of learning, tailored to individual needs and

aspirations. It enables the learner to engage with a variety of providers with progression routes identified. To date, many learners have successfully moved onto mainstream learning programmes and some into employment.

Great Yarmouth College were involved with the Improving Choices pathfinder project and has become a specialist in the area of visually impaired students. The College has investigate the best way to support students with visual impairments in terms of teaching, teaching support, equipment and software and has shared this good practice with other providers.

Suffolk

Suffolk County Council is now embarking on a review of its SEN strategy and this is central to Inclusion, the Every Child Matters agenda and the Children's Act. This review is slightly out of step with the schedule for the Suffolk School Organisational Review (SOR) currently, but will be linked.

The Improving Choice Pathfinder has been operating in Suffolk since 2005. This initiative offers young people between the ages 16-25 with complex learning difficulties the opportunity to access further education and work based learning across the county. The programme meets individual learning needs by creating a supported bespoke package of learning, tailored to individual needs and aspirations. It enables the learner to engage with a variety of providers with progression routes identified. To date, many learners have successfully moved onto mainstream learning programmes and some into employment.

The Improving Choice Pathfinder has been reviewed by external consultants and their report will be available soon.

4.4. Sixth Form Provision

Sixth form learning is provided differently in the two towns:

- **East Norfolk Sixth Form College** in Gorleston draws learners from Great Yarmouth and North Suffolk. Many students from north Suffolk are already in secondary education in Norfolk before transferring to the College.
- The three **Lowestoft schools** have formed a consortium for sixth form education that enables a student to study at their home establishment or at either of the other two 6th form centres. Some analysis of movement between centres is provided later in this report. The three schools publish a joint prospectus called 'Your Future at Lowestoft Sixth' but otherwise are managed and operate independently.

4.5. General Further Education Colleges

Both of the towns in the review area have a general further education college:

- Great Yarmouth College
- Lowestoft College

Both colleges offer a wide range of courses at levels 1, 2 and 3, with a strong vocational focus. Great Yarmouth College has been designated as a Centre Vocational Excellence (COVE) in two areas: Care and Computing. Lowestoft College has been designated as a Centre of Vocational Excellence (COVE) in four areas: Care, Construction, Skills for Energy and Offshore Technology. Great Yarmouth College and Lowestoft College are both partners in University Campus Suffolk, offering progression to higher education programmes.

Note: The educational institutions mentioned above, and in particular the three colleges, attract students from a far wider area than the two towns and their immediate hinterlands.

4.6. Training Providers

There are a number of training providers delivering LSC-funded work-based learning programmes within the review area as follows:.

- YMCA – operating Entry to Employment (E2E) and apprenticeship provision across both Yarmouth and Lowestoft.
- Include – offering E2E provision in Great Yarmouth
- Plummers Training in Caister – offering NVQ 3 in Dental Nursing only
- Education & Youth Services (EYS) – offering E2E provision in Lowestoft.
- Lifeskills Solutions – offering E2E provision in Lowestoft from August 2007.
- CITB – offering apprenticeships in construction skills
- The two FE Colleges also offer apprenticeship provision (levels 2 and 3) in their respective centres and Great Yarmouth College additionally offers E2E provision.

Apprenticeships at level 2 and Advanced Apprenticeships at level 3 take between one and three years to complete and are available in a wide range of industry sectors nationally. These are open to those aged 16-24 and the learner works directly for an employer during the qualification period. Learning is mostly delivered and assessed on-the-job, supported by a training provider or FE College and the qualification is composed of an NVQ and technical Certificate in the specialist area, plus a key skills qualification at the appropriate level. The learning is jointly funded by the LSC and the employer.

Entry to Employment (E2E) is a short programme (average 22 weeks) for young people (aged 16-19) who have left school but are not in education, training or employment or who require some additional support to get the skills they require to move on to a course, job or apprenticeship. It aims to provide learners with the skills they need to enter the workplace and this can involve some vocational training, work tasters, preparation for work or literacy and numeracy support. E2E provision is currently fully funded by the LSC.

4.7. Adult and Community Learning

A wide range of personal and community development courses and learning activities are available to adults in Great Yarmouth and Lowestoft through Adult Education Services, further education colleges and the voluntary and community sector, with Next Step Norfolk and Suffolk providing information, advice and guidance to adults in partnership with providers and agencies.

4.8. Train to Gain

Train to Gain was a new LSC-funded initiative established in 2006 and aimed at training staff within companies, both large and small, nationally. Train to Gain targets have been set at a regional level, but contracted providers were given notional targets by sector and by area. The 2006/7 contract year had a very slow start and there were challenging targets which have largely not yet been met.

The main providers delivering Train to Gain activity in Norfolk are: College for Business Consortium (this consists of seven providers - five Norfolk colleges which include Great Yarmouth College plus two private sector providers), Construction Learning World and Anne Clark Ltd. The regional Train to Gain Team and the Train to Gain Area Board for Norfolk are in the process of analysing data and will be putting a plan in place to improve performance in the region and in Norfolk. There has recently been a good increase in brokerage activity in Norfolk, mirrored by increased brokerage activity actioned in Yarmouth so far this year compared to a slow start in 2006. 36 employers have been engaged this year in Yarmouth through the Home Counties Consultancy and the East of England Brokerage Company with possible recruitment of 111 learners.

Suffolk has one large consortium operating within its boundaries, led by West Suffolk College and linking in the other Suffolk Colleges, plus a number of key training providers. The consortium will achieve about 45% of its learner target for 2006/7, but this level of performance is reflected across the region in a tough start-up year. Not all of the learners/employers engaged through the consortium are based in Suffolk; a significant number are over neighbouring borders. Some other regional consortia are engaging Suffolk learners and employers as part of their overall reach.

Up to the end of July 2007, 335 learners in Great Yarmouth and 340 learners in the Lowestoft area have been funded through Train to Gain. This relates to 132 Great Yarmouth employers and 460 Lowestoft employers engaged in training. The primary sectors in which training has taken place so far are Health & Social Care, Business Administration and Retail & Commercial Enterprises, with some training also in Construction (mainly Lowestoft), Engineering & Manufacturing Technologies and Environment (mainly Great Yarmouth).

5. CURRENT CURRICULUM OFFER

The Education Landscape

The review area offers a broad curriculum to learners of all ages both within the Great Yarmouth and Lowestoft towns and to learners travelling in from the rural hinterland. There are however issues of rurality, transport and special needs which may mean that not all of this provision is easily accessible to all learners across the spectrum and this is something that must be considered in the review.

5.1. Sixth Form Learner Numbers

The table below shows the numbers of learners in sixth form provision across Great Yarmouth and Lowestoft, the distribution of learners and the areas of provision they are accessing.

Table 6: Sixth Form Learner Numbers

Establishment Name	Total Number of Learners	Numbers on AS/A2	Intermediate Vocational	Advanced Vocational	Combination A/AS & Vocational
East Norfolk Sixth Form College	1295 (1277 ft & 18 pt)	Of the full time learners 93 are on level two programmes, 1170 are on level three programmes, 13 are on pre-degree programmes and one student is not classified.			
Benjamin Britten High School	155	133		3	19
The Denes High School	161	138	23		
Kirkley Community High School	240	215	15		10

Source: Post 16 Self Evaluation Proformas

Full time 16-18 learner numbers at East Norfolk Sixth Form College have doubled in the past six years¹³, making it the third fastest growing college in the country over the last 5 years and reflecting the increase in participation rates in Great Yarmouth.

5.2. The Sixth Form Curriculum Offer

The information provided by East Norfolk Sixth Form College and by the Sixth Form Consortium in Lowestoft shows the range of courses available to learners in the areas. There are 47 subjects offered at AS/A2 and a more than 20 vocational and other programmes, plus GCSE options.

¹³ Source: East Norfolk Sixth Form College learner data

Table 7: The curriculum accessible to Great Yarmouth and Lowestoft learners (*In addition, Appendix 3: Great Yarmouth and Lowestoft Curriculum Matrix, shows all sixth form and college provision together*)

Subject Area	East Norfolk Sixth Form College	Lowestoft Sixth Form Consortium
AS/A2 Programmes		
Accounting	√	√
Art (Photography)	√	
Art and Design	√	√
Art & Design History	√	
Biology	√	√
Business Studies	√	√
Chemistry	√	√
Classical Civilisation (AS level only)	√	
Communication studies	√	
Computing	√	
Critical Thinking	√ (from 2007/8)	√
Dance	√	√
Design & Technology – Product Design		√
Drama and Theatre Studies	√	√
Economics	√	√
Electronics	√	√
English Language	√	√
English Literature	√	√
Environmental Science	√	√
Film Studies	√	√
French	√	√
Further Mathematics	√	√
General Studies	√	√
Geography	√	√
Geology	√	
German	√	
Government and Politics	√	√
Graphic design	√	
Health & Social Care	√ (from 2007/8)	√
History	√	
Human Biology	√	√
Information Technology	√	√
Law	√	√
Mathematics	√	√
Media Studies	√	√
Music	√	√
Music Technology	√	√
Performance Studies	√	√
Philosophy	√	√
Physical Education	√	√
Physics	√	√
Psychology	√	√
Religious Studies	√ (AS only)	
Sociology	√	√

Subject Area	East Norfolk Sixth Form College	Lowestoft Sixth Form Consortium
Spanish	√ (from 2007/8)	√
Textile	√	
Three Dimension Art Studies (product design)	√	
Vocational Programmes		
Sport in Society		
Level 2 Programmes		
BTEC First Certificate in Business Studies	√ (from 2007/8)	
BTEC First Certificate in Dance	√ (from 2007/8)	
BTEC First Certificate in Health & Social Care	√ (from 2007/8)	
BTEC First Certificate in IT	√ (from 2007/8)	
BTEC First Certificate in Media	√ (from 2007/8)	
BTEC First Certificate in Performance	√ (from 2007/8)	
BTEC First Certificate in Sport	√ (from 2007/8)	
BTEC First Diploma – Countryside & Environment		√
BTEC First Diploma – IT Practitioners	√	
BTEC First Diploma – Public Services	√	
BTEC First Diploma - Sport	√	√
Level 3 Programmes		
BTEC National Diploma – IT Practitioners	√	
BTEC National Diploma – Public Services	√	
BTEC National Diploma - Sport	√	
BTEC National Award – e-business	√	
BTEC National Certificate – e-business	√	
BTEC National Certificate – Media Studies	√	
OCR National Certificate in Business Studies	√	√
OCR National Diploma in Business Studies	√	√
OCR National Certificate for IT Practitioners	√	√
OCR National Diploma for IT Practitioners	√	√
OCR National Diploma in Media Studies	√	√
Other Courses		
GCSEs: Art Child development Dance English Language English Literature ICT Maths & Maths (Fast Track) Media studies Science	√	
GCSE re-sits: English, Mathematics, Science		√
A+ Computer Maintenance	√	
Adult Literacy / Key Skills Communication	√	
Community Sports Leader Award	√	√
Computer Networking	√	
iMedia (Level 2 and Level 3)	√	
iPro Computer Networking	√	
Leadership and IT	√	

Subject Area	East Norfolk Sixth Form College	Lowestoft Sixth Form Consortium
Money Management	√	
Sport & Society (Assessed by De Montfort University)		√
Sports Performance and Coach Education	√	

Source: East Norfolk Sixth Form College and Lowestoft Sixth Form Consortium

The primarily academic programmes at ENSFC in Norfolk are complemented by the mainly vocational opportunities offered at Great Yarmouth College at levels one, two and three. But there are currently 285 students at ENSFC whose main programme is a BTEC course. The ENSFC timetable allows student programmes to be constructed from courses at all levels and in all areas in almost unlimited combinations.

The three high schools in Lowestoft comprise a sixth form consortium which offers the full curriculum (as above) to all learners. Sophisticated timetabling software helps the consortium to work out curriculum access so that the majority of learners are able to undertake their first choice of study, with access through their local school the first option, but transport provided where this is not possible.

Students are taught in half-day blocks and there is coordinated timetabling across the consortium schools to ensure that it is possible for a student to follow a course in a school other than their home base if that is appropriate. Where students are taught may differ from year to year, depending on the options selected. The three High Schools are linked by the use of a free coach service that operates first thing in the morning, lunchtime and at the end of the school day.

It should be noted that, for all sixth form provision, the development of the 14-19 curriculum and the introduction of specialised diplomas from the 2008/09 academic year may change the curriculum offer to learners in the future. These are still in development, although the Great Yarmouth colleges will not be offering Diplomas for 2008/9.

5.3. Special Schools Curriculum

As limited information was available at the time of compiling this report further research will be undertaken to establish consistent and comparable information on 16-18 learning opportunities for young people with learning difficulties and disabilities across the review area.

Suffolk are currently undertaking an exercise with Connexions looking at destinations for learners with learning difficulties and disabilities across the county, linked also to the requirements of the September Guarantee. The data collected will be analysed to identify gaps in provision so that discussions can take place with providers. This project will be ongoing throughout this academic year.

5.4. FE College Learner Numbers

The table below shows the numbers of learners attending courses at both of the FE colleges for the 2005/6 academic year.

Table 8: FE College learner numbers across the review area

	Learners aged 16-18 in the 2005/6 academic year			Learners aged 19+ in the 2005/6 academic year		
	FTEs	Full-time	Part-time	FTEs	Full-time	Part-time
Great Yarmouth College	1,289	1,213	229	909	291	1,681
Lowestoft College	1,400	967	148	645	312	1,365

Source: Learning & Skills Council, F04 returns data

5.5. FE Courses

The two FE Colleges offer a wide range of vocational courses for learners as the table below shows.

Table 9: Courses offered by the FE Colleges in the review area (*please also see Appendix 3: Great Yarmouth and Lowestoft Curriculum Matrix to view sixth form and college data presented jointly*)

Course Areas	Great Yarmouth College				Lowestoft College			
	L1	L2	L3	L4	L1	L2	L3	L4
Access to Art & Design							√	
Access to Humanities and Social Sciences			√					
Access to Health & Life Sciences							√	
Access to Life Studies			√					
Access to Music			√					
Access to Social Work and Social Care Professions			√				√	
Administration	√		√		√	√	√	
Adult Literacy Support			√			√	√	
Adult Numeracy Support				√			√	
Air Cabin Crew						√		
Animal Care / Management		√	√		√	√	√	
Assessor Award			√				√	
AutoCad			√	√		√	√	
Beauty Therapy		√	√		√	√	√	
Boat Construction						√	√	
Book-keeping	√	√					√	
Business		√			√	√	√	√
Business (Finance)			√			√	√	
Business (Human Resources)			√					
Business (Marketing)			√					
Children's Care, Learning & Development		√	√		√	√	√	

Course Areas	Great Yarmouth College				Lowestoft College			
	L1	L2	L3	L4	L1	L2	L3	L4
Computing / CLAIT / ICT	√	√	√	√	√	√	√	√
Construction		√			√	√	√	
Counselling Skills	√				√			
Counselling and Therapeutic Care				√				
Creative Cutting and Colouring		√				√	√	
Decorative Operations				√				
Design Crafts						√	√	√
Dip into Art Design & Media	√							
Dip Intro to Professional Cookery	√							
Early Years			√			√	√	√
Electrical Equipment						√	√	
Electrical Installation			√			√	√	
Electrical/Electronic Engineering			√			√	√	√
Electronics		√			√	√		
Engineering					√	√	√	√
ESOL	√	√			√	√		
Fashion And Clothing (Textiles)			√					√
Fine Art			√					
Floristry			√					
French		√						
Gardening		√						
GCSE Biology		√						
GCSE English		√				√		
GCSE Environmental Science		√				√		
GCSE Maths		√				√		
Graphic Design			√			√	√	
Hairdressing	√	√	√		√	√	√	
Health & Social Care		√	√	√		√	√	
Holistic Therapies						√	√	
Hospitality / Catering / Food Prep	√	√	√		√	√	√	
ITT							√	√
LV Mechanics	√	√			√	√	√	
Maintenance Engineering			√			√	√	
Marine Engineering		√						
Mechanical Engineering			√	√	√	√	√	√
Media		√	√					
Medical Secretary's Diploma		√						
Motor Vehicle					√	√	√	
Music Practice			√					
Painting and Decorating					√	√	√	
Performing Arts (Acting)		√						
Performing Arts (Music)		√						
Performing Arts (Performing)			√					
Performing Engine Operations	√					√	√	
Photography			√	√				
Plumbing		√			√	√	√	
Pre-Apprenticeship Engineering	√				√	√		
Public Services/Uniformed Services		√	√		√	√	√	

Course Areas	Great Yarmouth College				Lowestoft College			
	L1	L2	L3	L4	L1	L2	L3	L4
Registered Managers Award				√				
Retail Skills	√	√						
Science								√
Spanish	√	√			√			
Sport & Leisure		√	√			√	√	
Supervisory Management							√	√
Teaching Assistants		√	√			√	√	
Textiles			√	√			√	√
Travel and Tourism		√	√		√	√	√	√
Trowel Occupations		√	√		√	√	√	
Welding / Fabrication	√	√			√	√	√	
Wood Machining					√	√		
Wood Occupations		√			√	√	√	

Source: Curriculum Information from Colleges

In addition to the above the two further education colleges offer a wide range of short courses aimed primarily at adults. The above data relates to 2006/7 courses and does not include planned curriculum developments for the 2007-08 academic year.

5.6. Learner Numbers Accessing Work-Based Learning

The table below illustrates the number of Apprenticeship and NVQ learners in the review area over the period from 2004 to 2007.

Table 10: The numbers of learners accessing work-based learning programmes across the review area

	Year	Great Yarmouth Wards	Lowestoft Wards
Apprenticeship	2004/05	275	183
	2005/06	176	191
	2006/07	170	182
Advanced Apprenticeship	2004/05	53	68
	2005/06	51	86
	2006/07	63	73
NVQ Programme	2004/05	18	5
	2005/06	2	1
	2006/07	0	0
Total Starts	2004/05	346	256
	2005/06	229	278
	2006/07	233	255

Table 11: This table provides an overview of E2E learner numbers in the review area:

Year	Great Yarmouth Wards	Lowestoft Wards
2006/07	136	120
2005/06	153	121
2004/05	124	117

Source: Learning & Skills Council Learner Data

5.7. The Work-Based Learning Curriculum Offer

The following table shows the range of work-based learning (WBL) courses offered by providers based in the review area. There are also other providers operating in the two counties, regionally or nationally who also offer additional provision to learners from more remote bases, either supported entirely in the workplace or offering some block release where the learner attends college or a training provider premises for intensive learning.

Table 12: WBL programmes run by local providers

Sector Subject Area	Great Yarmouth College	Lowestoft College	YMCA	Plummers	Include	EYS	CITB
Entry to Employment	√		√		√	√	
Apprenticeships:							
Business Admin & Law	√	√					
Construction and the Built Environment	√	√					√
Engineering and Manufacturing	√	√					
Health, Public Services & Care	√		√	NVQ 3 in Dental Nursing			
Hairdressing	√	√					
Hospitality & Catering	√	√					
Customer Service	√		√				
Retail	√		√				

Source: Learning & Skills Council Records

5.8. Adult and Community Learning Curriculum Great Yarmouth

Adult and Community Learning for Yarmouth is provided through the Adult Education Service, Great Yarmouth College, local community and voluntary organisations and partners, including Higher Education opportunities, Personal and Community Development Learning (PCDL), Wider Family Learning (WFL),

Family Learning (FLNN), Neighbourhood Learning in Deprived Communities (NLDC) and FIRSTSTEPS learning.

Learning centres target groups which include community groups, voluntary organisations and their clients, SureStart families, pupils wishing to access learning materials, asylum seekers, the unemployed, low waged and low skilled. The centres also provide ICT training, family learning activities, support packages for schools curriculum, basic skills programmes and advice about broader curriculum opportunities.

An example of new provision in Great Yarmouth is the Integrated Community Learning project, which involves Norfolk Careers Services, Norfolk Adult Education, Great Yarmouth College, Basic Skills, Norfolk Youth & Community Service and Flegg Neighbourhood Learning Centre. The project aims to establish provision and widen participation through integrated Community Learning Programmes in areas of deprivation by promoting personal and social development, equal opportunities, and by offering Guidance, Information and Advice to residents within those areas.

Great Yarmouth Local Strategic Partnership (LSP) received £4 million from the Governments Neighbourhood Renewal fund (NRF) for the period April 2006 to March 2008, so LSP Theme Forums and their various Sub-Groups were asked to commission projects or activity to address any barriers or any gaps in service for the floor target relevant to them. These are targets set by Government whose purpose is designed to "crank up" the quality of services to an acceptable minimum or "floor" level in Priority Neighbourhoods. Just under 60 new projects were selected, and 90% of the budget has been allocated to date.

A curriculum review of adult provision in Norfolk is being undertaken by the Partnership and the first draft of this is due to be available in October 2007. Data from this will be fed into the review.

Lowestoft

Adult and community learning provision in Suffolk is funded partially by the Learning and Skills Council, part by Suffolk County Council and also through some other funding streams. Learning is accessed through community learning centres and other premises local to learners, for example libraries, community centres, etc.

The curriculum offer includes:

- Skills for Life provision
- Accredited First Steps learning
- ICT
- A wide range of family language and literacy learning and wider families provision
- Parenting courses
- Community development courses
- Information and guidance

- Personal and community development learning (PCDL) (e.g. crafts, languages)
- Passport to Learning.

Examples of recent projects include:

- Neighbourhood Renewal Fund Project – focusing on the super output areas of St Margaret's, Normanston, Harbour, parts of Kirkley and Whitton
- Waveney Learning Community was a testbed learning community funded by Go-East and now receives funding through the LSP
- Library project

We do not currently have information on the number of learners accessing provision in Lowestoft only, however the total number of learners in 2006/7 to date in North Suffolk is 2,199 of which the larger proportion are in Lowestoft.

The Suffolk Adult Learning Partnership has recently been undertaking a review of the adult curriculum in the county and initial findings from this will be available shortly. Information will be extracted from this where it relates to the Lowestoft review area and fed into other curriculum development work being commissioned specifically for this review.

A more detailed paper on the adult offer across the two towns is due to be available this autumn.

6. Learner Mobility

There is significant movement of learners between the Norfolk and Suffolk sides of the border and from the rural hinterland areas for all types of provision. A limited amount of comparative data is available, so this does not allow a *full* evaluation of the extent of the travel of learners for post-16 education. However it was felt that some data would be useful to illustrate the flow of learners.

6.1. Travel to Learn: School

Great Yarmouth Schools

No specific information was available at the time of completing this report on the number of students from the Great Yarmouth schools only, aged 16-18 and resident in Norfolk, who travel to Suffolk secondary schools. It is therefore not possible to provide data similar to that in Tables 12 and 13 and to adequately assess the net effect of migration from one county to another.

However, Table 14 below does provide information on the flow of learners between both towns towards the three colleges.

Lowestoft Schools

Statistics provided by Suffolk Connexions (see Table 12 below) indicate that, during the last three years, between 67 and 97 students per year have left the three Lowestoft high schools to study at either East Norfolk Sixth Form College or Great Yarmouth College

Table 13: The flow of learners from Lowestoft High Schools into colleges in Great Yarmouth

	Great Yarmouth College			East Norfolk 6 th Form College		
	04	05	06	04	05	06
Benjamin Britten High School	11	8	6	21	42	30
The Denes High School	3	6	5	6	5	16
Kirkley Community High School	14	17	8	12	19	25
Total	28	31	19	39	66	71

Source: Suffolk Local Authority

Note: not all students transfer at the end of Year 11.

An analysis of the extent to which Lowestoft High Schools Consortium students from one establishment travel to another establishment in the consortium to study a subject at AS or A2 level, indicates that the number of subjects studied by students at an establishment other than at their home base is approximately equivalent for each of the three schools.

Table 14: The flow of learners between schools in the Lowestoft Sixth Form Consortium, in order to access learning opportunities in the 2006/7 academic year.

Home School	AS	A2	Total for Centre
Benjamin Britten High School	54	49	103
The Denes High School	63	62	125
Kirkley Community High School	69	55	124
Total for Consortium			352

Source: Lowestoft High Schools Consortium

In total there are 352 *instances* in the current school year where a student studies a subject at AS or A2 away from their own school (this is not the number of individual *students* but the number of *occurrences*). The subjects for which students will travel from their base establishment to another establishment to study vary from school to school according to each school's minority specialisms.

6.2. Travel to Learn: FE Colleges

The table below illustrates the extent of travel between the Great Yarmouth and Lowestoft wards for learners attending the two FE Colleges and the Sixth Form College. The 'Other Wards' column covers those travelling from the rural hinterlands, but this cannot currently be split down further.

This shows a broadly equal level of cross-border travel to access provision in either Norfolk or Suffolk. For example, of all learners attending Great Yarmouth College in 2005/6, 72% were from Great Yarmouth wards, 21% came from other wards and only 7% came from Lowestoft wards. A similar split applies to East Norfolk Sixth Form College. For Lowestoft College, the picture is 9% from GY wards, 57% and 34% other wards – whether Norfolk or Suffolk. Being the only college in the North Suffolk area, it attracts learners from a wide rural hinterland within Suffolk.

Table 15: Learners accessing FE provision in Great Yarmouth and Lowestoft

Provider	Year	Home Ward of Learner											
		Great Yarmouth Wards			Lowestoft Wards			Other wards			Total		
		16-18	19+	Total	16-18	19+	Total	16-18	19+	Total	16-18	19+	Total
Great Yarmouth College	2003/4	1029	2988	4017	40	273	313	188	611	799	1257	3872	5129
	2004/5	1072	2733	3805	72	349	421	202	902	1104	1346	3984	5330
	2005/6	1142	1579	2721	74	249	323	229	515	744	1445	2343	3788
	2006/7	1042	1183	2225	65	194	259	234	381	615	1341	1758	3099
East Norfolk Sixth Form College	2003/4	783	432	1215	98	16	114	183	17	200	1064	465	1529
	2004/5	812	420	1232	102	11	113	206	17	223	1120	448	1568
	2005/6	859	428	1287	113	15	128	245	17	262	1217	460	1677
	2006/7	867	96	963	161	2	163	266	5	271	1294	103	1397
Lowestoft College	2003/4	91	199	290	779	1574	2353	241	903	1144	1111	2676	3787
	2004/5	74	367	441	812	2238	3050	245	1048	1293	1131	3653	4784

Home Ward of Learner													
Provider	Year	Great Yarmouth Wards			Lowestoft Wards			Other wards			Total		
		16-18	19+	Total	16-18	19+	Total	16-18	19+	Total	16-18	19+	Total
	2005/6	68	353	421	859	1850	2709	209	636	845	1136	2839	3975
	2006/7	73	159	232	907	842	1749	254	358	612	1234	1359	2593

Source: Learning and Skills Council: ILR data received from education providers September 2007

6.3. Travel to Learn: E2E Learners

The below table shows that travel to access E2E provision is far more limited than where learners are travelling for school or FE provision. Learners are far more likely to attend an E2E programme closer to their home. E2E is however a short programme, with learners usually remaining for an average of 22 weeks only. From the table below, it *could* be assumed that only YMCA has learners travelling across the border, however this provider has a centre in both towns, so there is actually *no* real cross-border travel.

Table 16: Learners accessing E2E provision across both towns 2004-2007

Provider	Year	Learner Numbers	
		Great Yarmouth Wards	Lowestoft Wards
Broadland Council Training Services	2006/07	4	
	2005/06	2	
	2004/05	4	
Great Yarmouth College	2006/07	67	
	2005/06	54	
	2004/05	29	
Include	2006/07	22	
	2005/06	30	
	2004/05	32	
Norfolk Training Services Ltd	2006/07	3	
	2005/06	3	
	2004/05	3	
Norwich City College	2006/07	1	
	2005/06	1	
	2004/05	1	
Paston College	2005/06	1	
YMCA Training	2006/07	39	55
	2005/06	62	77
	2004/05	55	65
Education & Youth Services Ltd	2006/07		57
	2005/06		41
	2004/05		47

Provider	Year	Learner Numbers	
		Great Yarmouth Wards	Lowestoft Wards
NACRO	2006/07		8
	2005/06		3
	2004/05		5
Totals	2006/07	136	120
	2005/06	153	121
	2004/05	124	117

Source: Learning and Skills Council: ILR data received from education providers

7. LEARNER OUTCOMES

This section attempts to look at the data available on the outcomes for learners of all ages across the two towns and to measure how this contrasts with national performance. This will help us to determine, in this review, how current learning opportunities are serving the needs of the local population, where there are issues etc.

Great Yarmouth and Lowestoft are, as demonstrated in Section 2 of this report, areas where there are high levels of multiple deprivation, including education, skills and training deprivation and this is reflected in the outcomes for learners.

The latest data available for schools is for the academic year 2005/6 as 2006/7 data will not be released by the local authority until the end of October.

In **Great Yarmouth**,

- Average participation in learning at ages 16 – 18 (75%) compared to a Norfolk average of 75% and a national average of 77.3% for 2005/6
- At age 16, 10.2% of young people were NEET compared to the Norfolk average of 7.3% Nelson ward in Great Yarmouth has the highest number of NEET young people in the county, and Great Yarmouth wards make up 3 of the top ten wards with the highest number of NEET in the county.
- 39.7% of young people achieve 5 A*-C including Maths and English at GCSE.
- A high A-Level point score which compares well to the national average as can be seen in table 21

According to the latest Suffolk Statistical Review (14-19), **Lowestoft**, as a locality, has:

- Above average participation in learning at age 16-18 (72.4%), compared to the all Suffolk score of 71.1%, but this is still below the national average.
- The highest percentage of NEETs (young people not in education, employment or training) at 11.6% against a Suffolk average of 8.3%.
- The lowest rate of progression into higher education in Suffolk at 39.1% against a Suffolk average of 55.9%.
- The lowest GCSE scores at 5 A*-C including Maths and English at 35.5% against a Suffolk average of 45.9%.
- A low A-Level point score per entry, compared to Suffolk and England.

This illustrates a trend which reflects the deprivation in the review area.

7.1. Schools Data

The table below shows the numbers of students in each of the schools in the Great Yarmouth and Lowestoft review area over the past three academic years. This shows a broadly stable school population in the area over this period.

Table 17: Total Number of pupils in academic years 2004- 2007

School	2004/5	2005/6	2006/7
Caister High School	629	649	648
Cliff Park High School	902	896	888
Flegg High School	767	767	779
Great Yarmouth High School	809	797	758
Lynn Grove High School	892	901	901
Oriel High School	586	603	605
Benjamin Britten High School	847	865	855
The Denes High School	751	783	798
Kirkley Community High School	1,339	1,335	1,315
Sir John Lemman High School	1,360	1,367	1,365
TOTAL	8,882	8,963	9,012

Source: Local Authority Data from Suffolk and Norfolk County Councils

Note: While the full Sir John Lemman High School catchment is not included in review area, the part of the catchment covering Carlton Colville, etc is. The school's data has therefore been added here, although it has not been possible to separate out only the learners in the affected wards.

Of these learners shown in the table above, Table 18 illustrates the numbers who go on to achieve 5 A*-C grade GCSEs.

Table 18: Percentage of students achieving 5 A* to C grades in GCSE, by School

School	2003/4	2004/5	2005/6
Caister High School	42	35	51
Cliff Park High School	43	38	38
Flegg High School	54	58	62
Great Yarmouth High School	39	36	38
Lynn Grove High School	63	76	77
Oriel High School	24	34	28
Norfolk Average			55
Benjamin Britten High School	68	60	61
The Denes High School	37	40	38
Kirkley Community High School	35	43	46
Sir John Lemman High School	54	54	59
Suffolk Average			59
Overall Percentage Achieving Across Review Area	47	49	52
England Average	53.7	56.3	58.5

Source: PLASC. Total includes post 16 for Lowestoft Schools. England average from DCSF School achievement and attainment tables.

Note 1: This is *not* the numbers achieving 5 A*-C grades with Maths and English.

Note 2: While the full Sir John Lemman High School catchment is not included in review area, the part of the catchment covering Carlton Colville, etc is. The school's data has therefore been added here, although it has not been possible to separate out only the learners in the affected wards.

As can be seen from the above, whilst there have been improvements in the review area over the past three years and while some schools are performing above the national average, if we aggregate Great Yarmouth and Lowestoft learner results across the area, the results are below the national average as well as below county averages.

Table 19: Percentage of students achieving 5 A* to C (including English & Maths) at GCSE by home ward

Area	2005/6
Pupils in Great Yarmouth Wards	39.7%
Pupils in Lowestoft Wards	35.5%
Norfolk average ¹⁴	44.5%
Suffolk average	45.9%
England average	45.8%

Once again the attainment of learners across the wards in both towns is below both county averages and the national average in terms of the percentage attaining 5 A*-C grades including English and Maths, which may be reflective of the deprivation issues in the area.

Table 20: Average points score for all learners from Great Yarmouth and Lowestoft schools at GCSE.

School	2003/4	2004/5	2005/6
Caister High School	304	317	366
Cliff Park High School	317	311	303
Flegg High School	345	358	345
Great Yarmouth High School	291	283	271
Lynn Grove High School	419	582	535
Oriel High School	257	268	260
Benjamin Britten High School	418.5	430	419.5
The Denes High School	318.1	332.4	339.6
Kirkley Community High School	293	326.3	353
Sir John Lemman High School	355	358.4	376.7
Norfolk average	327	341	353
Suffolk average	352	362	368
England average	340	355	365

Note 1: Section 96 points, uncapped

¹⁴ Norfolk, Suffolk and England average data sourced from DCSF Achievement and attainment tables http://www.dfes.gov.uk/performance/tables/schools_06/region6.shtml

Note 2: While the full Sir John Lemman High School catchment is not included in review area, the part of the catchment covering Carlton Colville, etc is. The school's data has therefore been added here, although it has not been possible to separate out only the learners in the affected wards.

This reflects the trend shown above in terms of GCSE achievements for the review area and demonstrates (with a few notable exceptions) an overall rate of achievement at GCSE which is currently slightly lower than national averages.

Table 21: Value added data at Key Stages 2 – 4 (based on 5 A*-C performance against Key Stage 2 prior attainment)

School	2003/4	2004/5	2005/6
Caister High School	53	86	51
Cliff Park High School	73	93	92
Flegg High School	56	58	49
Great Yarmouth High School	32	67	52
Lynn Grove High School	41	7	4
Oriel High School	95	65	87
Benjamin Britten High School	5	21	16
The Denes High School	57	64	62
Kirkley Community High School	75	76	74
Sir John Lemman High School	28	46	18

Note 1: FFT percentile rating, 1 = highest rating value added, 100 = lowest rating value added, based on 5 A*-C performance against KS2 prior attainment (FFT "PA" model used)

Note 2: While the full Sir John Lemman High School catchment is not included in review area, the part of the catchment covering Carlton Colville, etc is. The school's data has therefore been added here, although it has not been possible to separate out only the learners in the affected wards.

This demonstrates the wide range of value being added to students across the schools in the review area.

A-Level Results for 2005/6

A-Level results in the review area show a clear differentiation in attainment in the two towns, with Great Yarmouth residents having higher attainment than Lowestoft learners.

Table 22: A-Level results for each institution and for the localities

	A-Level Learners	Average Point Score *	Total Point Score **
Great Yarmouth			
East Norfolk Sixth Form College (Total)	341	200.2	768.8
Great Yarmouth Ward Residents	237	197.6	838.1
Non-Great Yarmouth Ward Residents	104	206	738
Lowestoft			
Benjamin Britten High School	105	175	680
The Denes High School	32	160	508

	A-Level Learners	Average Point Score *	Total Point Score **
Kirkley Community High School	80	186	686
Sir John Leman High School	112	192	776
Overall <i>Lowestoft Ward</i> Learners	175	175.7	660.6
National Average		206	743

* Points Per Entry (ppe)

** Points Per Candidate (ppc)

Note 1: Numbers throughout are in QCA points – a grade A is worth 270 points, a grade B 240 etc down to grade E at 150.

Note 2: While the full Sir John Leman High School catchment is not included in review area, the part of the catchment covering Carlton Colville, etc is. The school's data has therefore been added here, although it has not been possible to separate out only the learners in the affected wards.

What this table demonstrates clearly is that Great Yarmouth learners achieve at almost the national average in terms of their average point score per qualification, and well above the average in terms of overall point score. Looking more closely at differences between the learners that live in the Great Yarmouth wards within the review area and those who live outside, the data shows that those living outside the town do slightly better in terms of their average point score. The difference here is not significant, but the column on the right shows a distinct difference in overall point score which indicates that learners living outside of the review area are undertaking more subjects overall as well as doing slightly better in outcomes terms.

The Lowestoft data demonstrates that learner attainment for those living in the area is significantly below the national average. The total point score for Lowestoft has improved over the past 3 years (with a dip on 2004/5), but this data indicates that, although Lowestoft learners have been increasing the numbers of qualifications taken per learner, outcomes have not increased.

7.2. FE College Achievements

The table below shows FE success rates for the academic year 2005/06 for the three colleges (one sixth form colleges and two FE colleges) in the review area, by ward of learner. 'Success rates' are calculated as the number of qualifications achieved, divided by the number of starters who do not transfer out. It can also be derived by multiplying achievement rate by retention rate¹⁵.

Table 23: FE Success rates in the review area.

Provider	Level	Lowestoft Wards	Great Yarmouth wards	Overall Success Rate
East Norfolk Sixth Form College	Level 2 16-18	85.90%	81.72%	83.29%
	Level 2 19+	66.67%	72.00%	68.97%

¹⁵ Source: LSC Benchmarking data: Success, Retention and Achievement Rates in Further Education Institutions in England

Provider	Level	Lowestoft Wards	Great Yarmouth wards	Overall Success Rate
	Level 3 16-18	79.95%	76.43%	78.60%
	Level 3 19+	33.33%	67.24%	59.72%
Great Yarmouth College	Level 2 16-18	94.12%	65.63%	64.23%
	Level 2 19+	88.24%	70.26%	67.57%
	Level 3 16-18	70.00%	83.40%	68.39%
	Level 3 19+	86.21%	68.60%	67.24%
Lowestoft College	Level 2 16-18	69.09%	69.57%	65.30%
	Level 2 19+	70.72%	77.42%	67.00%
	Level 3 16-18	72.52%	66.67%	67.44%
	Level 3 19+	78.05%	72.57%	73.07%
East of England	Level 2 16-18			72.41%
	Level 2 19+			72.43%
	Level 3 16-18			77.99%
	Level 3 19+			66.45%

Source: Learning and Skills Council Learner Data, September 2007

7.3. Work Based Learning Success Rates

The below table shows a picture of increasing success rates for both NVQ courses and for full apprenticeships over the past three years, for learners living in the wards included in the review area. Success rates are currently well above national minimum levels of performance baselines overall.

Table 24: Success rates for NVQ and apprenticeship learners

	Framework Success Rates			NVQ Success Rates		
	2004/05	2005/06	2006/07 ¹⁶	2004/05	2005/06	2006/07 ¹³
Great Yarmouth wards	37.42%	56.61%	59.13%	47.13%	63.66%	60.75%
Lowestoft wards	44.29%	54.58%	57.52%	57.63%	61.27%	62.88%
All wards within the review	41.56%	55.22%	56.99%	52.30%	61.89%	61.01%
East of England	40.74%	54.51%	62.52%	52.97%	61.48%	68.41%

Source: Learning and Skills Council Learner Data

7.4. Positive Progressions for Entry to Employment

E2E is a programme which, historically, takes a high percentage of learners with low levels of literacy and numeracy achievement. The aim is to provide learners with the input they require in terms of basic skills, employability skills, vocational training and personal and social development in order to help them to progress

¹⁶ The above data for the 2006/7 academic year covers the period up to and including May 2007 only.

into work or further education or training. One of the measures of success for E2E provision is 'positive destinations/progressions', which means that the learner moves on and does not simply return to the NEET category.

As can be seen from the below table, the rate of positive progressions has been moving upward year on year in Great Yarmouth, whereas the picture for Lowestoft has been less positive.

Table 25: E2E Positive Progressions

Year	Destination	Great Yarmouth Wards	Lowestoft Wards
2006/07	Into Apprenticeships	9	8
	Into FE	54	27
	Into Employment	0	0
	Into Employment (with training)	2	1
	Into Employment (without training)	11	24
	Leavers	126	142
	% Positive Progressions	60.32%	42.25%
2005/06	Into Apprenticeships	10	7
	Into FE	44	20
	Into Employment	0	0
	Into Employment (with training)	3	2
	Into Employment (without training)	48	24
	Leavers	193	139
	% Positive Progressions	54.40%	38.13%
2004/05	Into Apprenticeships	10	15
	Into FE	35	23
	Into Employment	29	37
	Into Employment (with training)	0	0
	Into Employment (without training)	0	0
	Leavers	160	168
	% Positive Progressions	46.25%	44.64%

Source: Learning and Skills Council Learner Data

Note: Data for 2006/7 only covers the period to June 2007 (Period 11)

Suffolk is currently launching a review of E2E provision in the county and this will include the E2E provision in Lowestoft. The results of the review (final report due December 2007, with interim report end October) will be fed into this review of post 16 provision.

7.5. Adult Qualifications

The table and graph below compare the levels of qualification held by the working age population (Ages 16-64) in 2005 across the two towns, how this compares to county averages and across England as a whole.

This shows a significant issue in terms of lack of qualifications among adults in Great Yarmouth and Lowestoft and this is a factor which significantly affects access to work, progression and longer terms economic prosperity.

Table 26: Qualification Levels of the Working Age Population

	No qualifications	Qualified to NVQ1 and above	Qualified to NVQ2 and above	Qualified to NVQ3 and above
England	14%	71.1%	62.5%	43.9%
East of England	13%	79%	63%	42%
Norfolk	15%	78%	60%	38%
Great Yarmouth	18%	75%	53%	31%
Suffolk	16%	76%	61%	40%
Waveney	20%	72%	59%	37%

Source: Annual Population Survey, Office for National Statistics (Jan to Dec 2005). Numbers rounded up

7.6. Skills for Life Qualifications

Norfolk has the highest percentage of young people in the region taking Skills for Life qualifications that count towards the PSA targets. In terms of adult learners, Norfolk had secured a 12% increase in countable qualifications from 2004/05 to 2005/06 (Yarmouth experienced an increase of 4% to 956).

The 2006/07 Norfolk plan indicated that 34% of all learners would follow either a full level 2, full level 3 or recognised Skills for Life programme (in Yarmouth this was 32%). It is expected that the 2006/07 outturn will be 37% for Norfolk and 33% for Yarmouth.

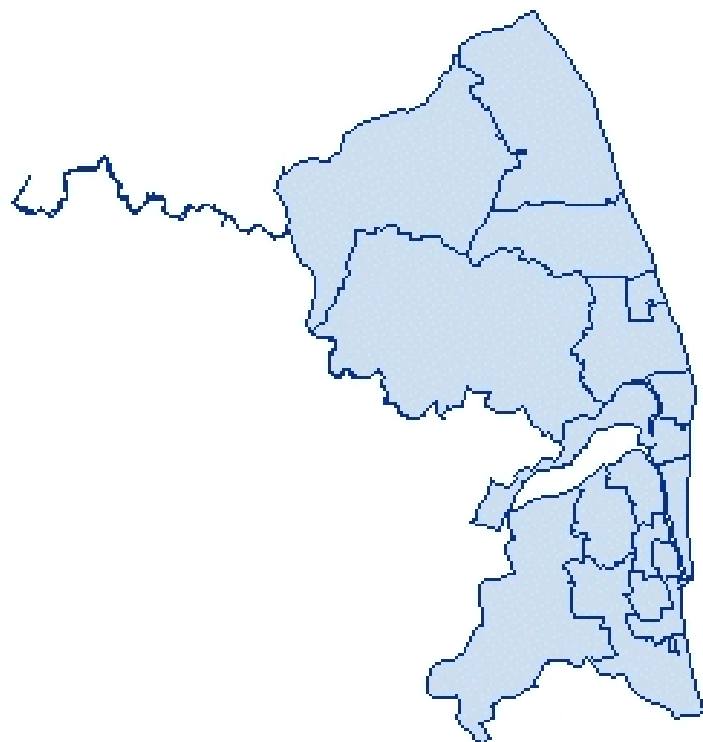
The Suffolk 2006/7 plan provided for 3,496 adults to work towards a Skills for Life qualification, an increase of just under 1,000 from 2004/05. Suffolk also planned to increase the provision that counted towards targets from 42% in 2005/06 to 60% in 2006/07 and increase the rate of learners achieving at least one Skills for Life target aim from 71% in 2005/06 to 80% in 2006/07.

APPENDICES

Appendix 1 - The Review Area (Great Yarmouth)

The wards for the **Great Yarmouth** Borough that are included in the Review area are:

Ashby with Oby
Belton with Browston
Bradwell
Bradwell north
Bradwell south and Hopton
Burgh Castle
Caister North
Caister on Sea
Caister south
Central and Northgate
Claydon
East Flegg
Filby
Fleggburgh
Fleggburgh
Fritton and St Olaves
Gorleston
Hemsby
Hopton on Sea
Lothingland (part also in Lowestoft area)
Magdalen
Martham
Mautby
Nelson
Ormesby
Ormesby St Margaret with Scratby
Repps with Bastwick
Rollesby
Somerton
Southtown and Cobholm
St Andrews
Stokesby with Herringby
West Caister
West Flegg
Winterton on sea
Yarmouth North

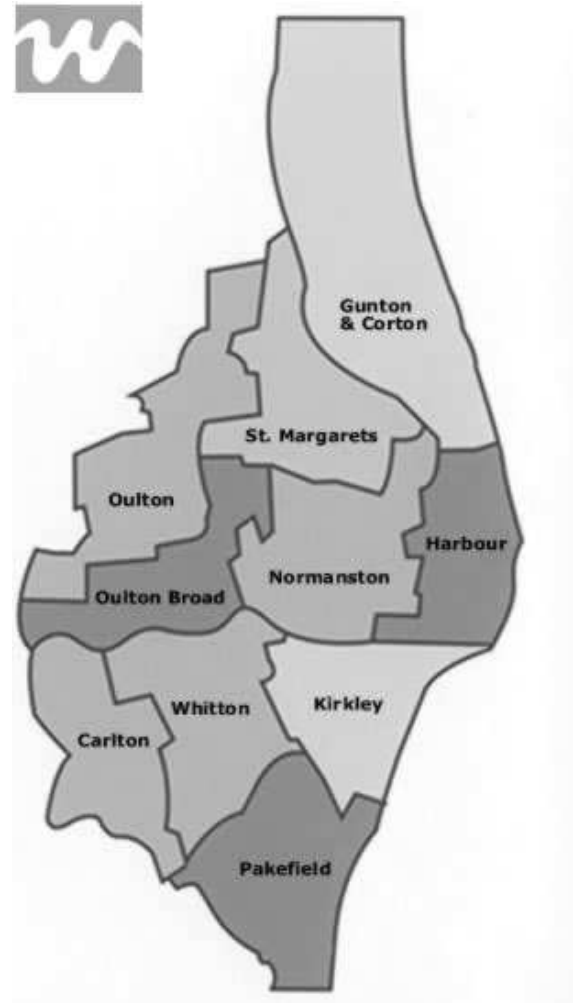


Children's Services in Norfolk is organised into 5 areas, Central, North, South East and West which are subdivided into 13 localities. Great Yarmouth is in the East area but it is not co-terminous with the East area boundary which extends further inland.

Appendix 1 - The Review Area (Lowestoft)

The wards representing the Lowestoft area included in the review are:

Lothingland (part of ward also in Great Yarmouth Borough)
Oulton
Gunton And Corton
Oulton Broad
Carlton
Pakefield
St Margaret's
Normanston
Kirkley
Whitton
Harbour
Kessingland (not shown on map)
Carlton Colville (not shown on map)
Gisleham (not shown on map)



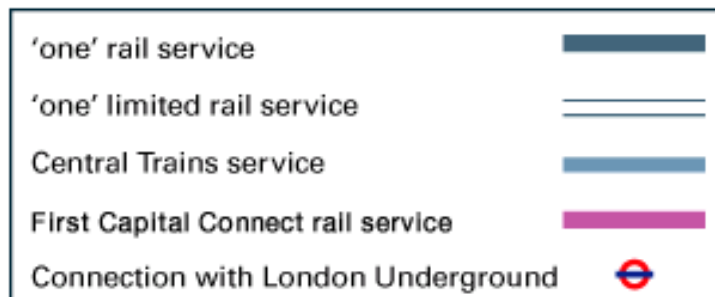
The Suffolk Children's and Young People's services in Suffolk are organised into three areas: Western, Haven Gateway and Waveney. Lowestoft is in the northernmost part of the Waveney area.

APPENDIX 2 – Transport Links

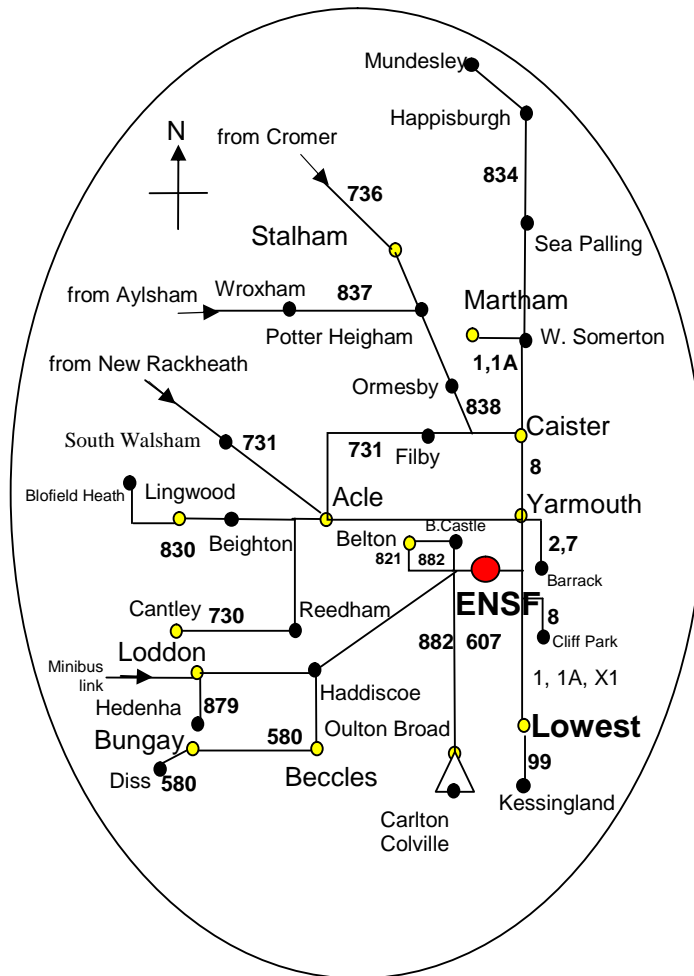
A. Road links between and around Great Yarmouth and Lowestoft



B. Train links between Great Yarmouth and Lowestoft



C. Bus Routes from Great Yarmouth to Lowestoft

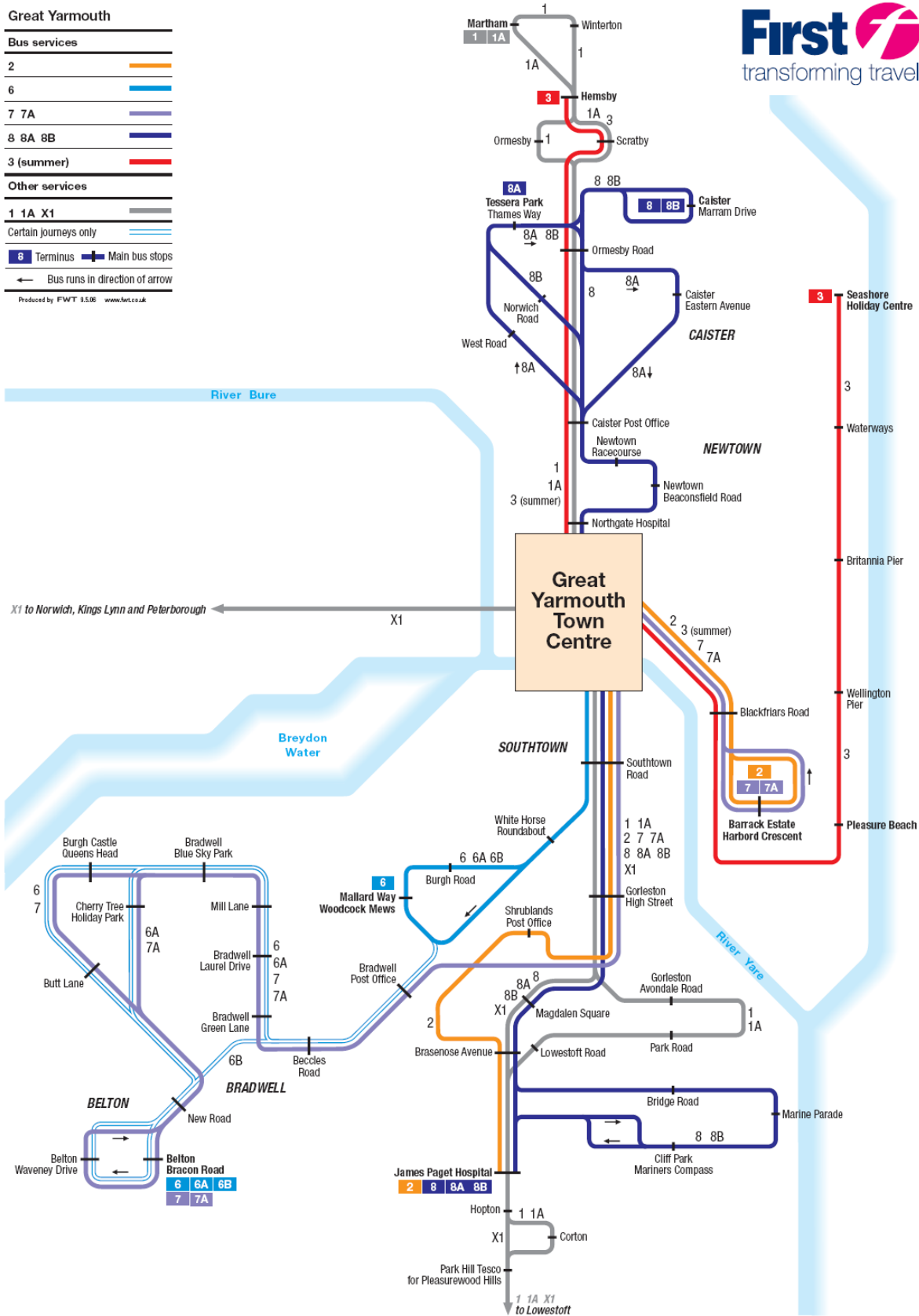


This diagram shows more clearly the bus connections between the colleges and the various feeder school catchments, with a focus on the Norfolk side of the border.

D. Great Yarmouth Bus Routes



Great Yarmouth	
Bus services	
2	
6	
7 7A	
8 8A 8B	
3 (summer)	
Other services	
1 1A X1	
Certain journeys only	
Terminus	Main bus stops
Bus runs in direction of arrow	
<small>Produced by FWT 3.5.06 www.fwt.co.uk</small>	



E. Lowestoft Bus Routes



APPENDIX 3 – Curriculum Matrix

This matrix aims to bring together all of the qualifications delivered in sixth form provision and FE colleges across the area in order to allow a view of where there are pathways for learners and where there might be gaps

This is a work in progress and is still being compiled. It will be available for the event on 2nd October