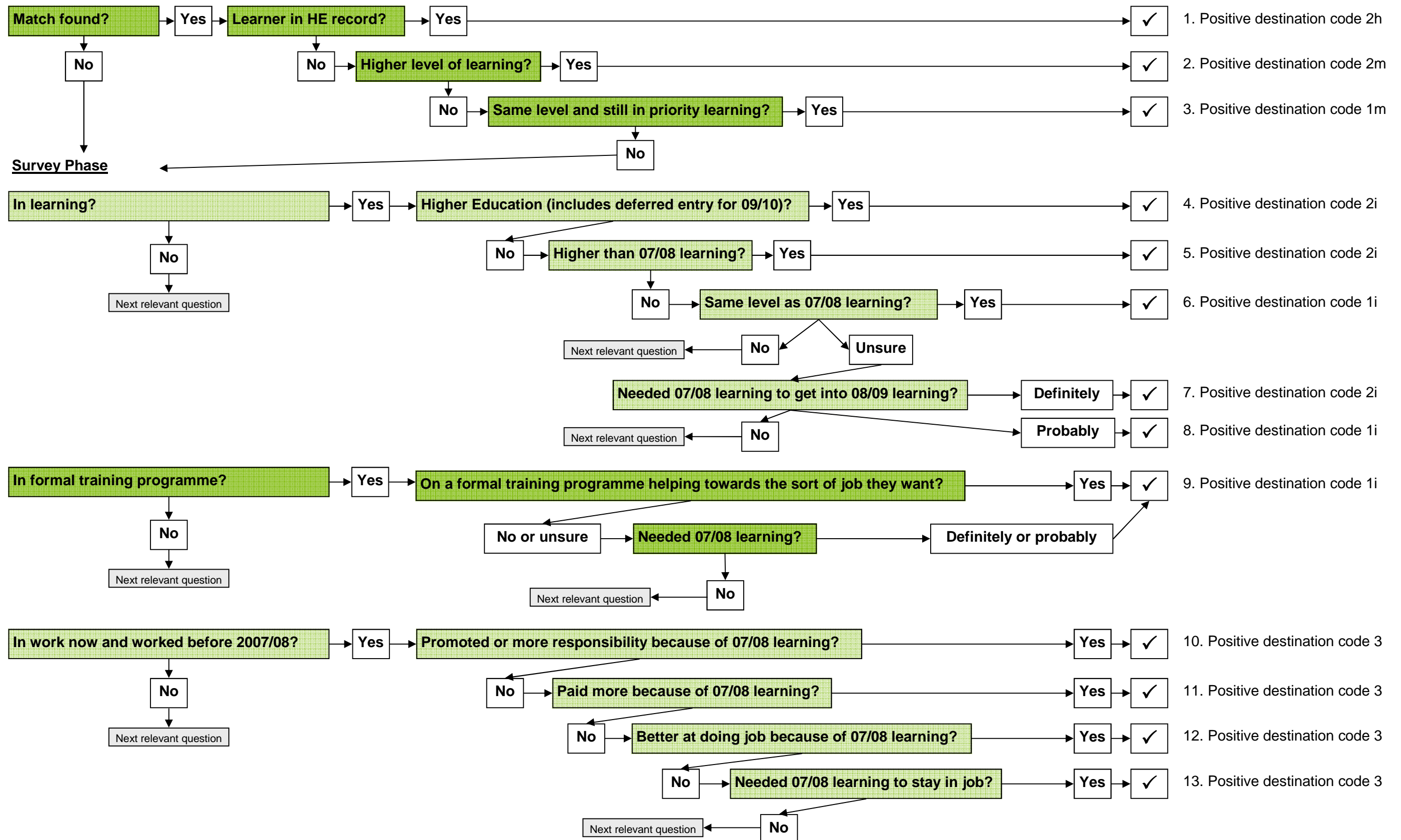


## Framework for Excellence Learner Destinations Measure: Routes to a Positive Destination

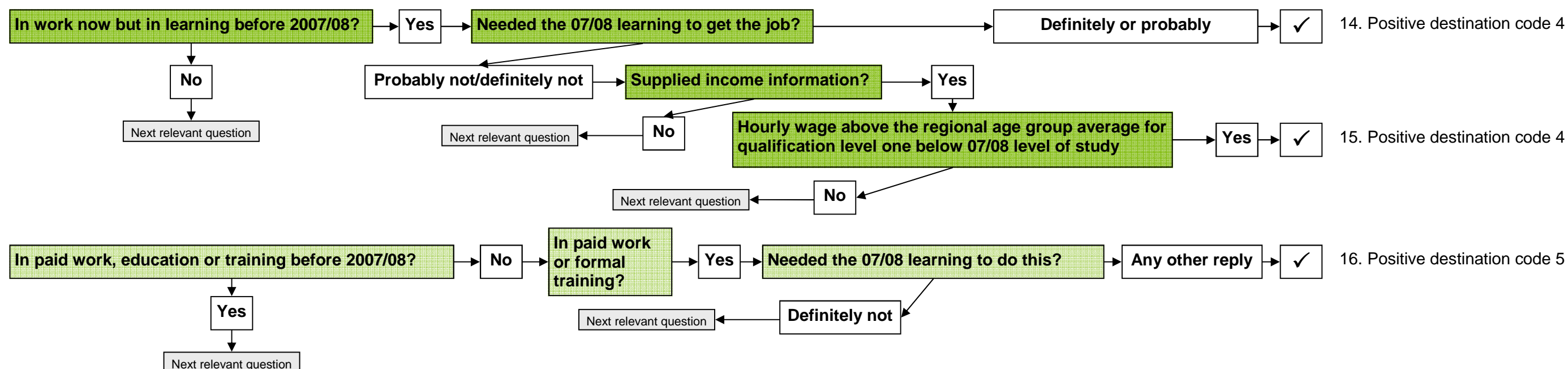
Learners can be deemed to have a positive destination as a result of either data matching or the answers they give during a telephone interview. For the 2009/10 Schools Pilot the telephone interview is replaced by a postal or online survey. There are 16 routes to a positive destination. Once a positive destination has been identified it remains positive regardless of the answers to subsequent questions. This diagram below shows a simplified version of both the questionnaire and the wording of specific questions and is only intended to illustrate the 16 possible routes to a positive destination.

**Matching Phase** (into the 2008/09 ILR, 2009 School Census or 2008/09 HEFCE records)

### The Routes



## Framework for Excellence Learner Destinations Measure: Routes to a Positive Destination (continued)



### Summary of the Routes to a Positive Destination

- |   |  |
|---|--|
| <ol style="list-style-type: none"> <li>1. Learner identified as being in HEFCE-funded learning</li> <li>2. Learner identified in ILR/school sixth form records at a higher level of study</li> <li>3. Learner identified in priority learning at the same level of study</li> <li>4. Learner self-identified in interview as progressing to HE</li> <li>5. Learner self-identified in interview as still in learning at a higher level of study</li> <li>6. Learner self-identified in interview as still in learning at the same level of study</li> <li>7. Learner self-identified in interview as still in learning (2007/08 learning definitely necessary)</li> <li>8. Learner self-identified in interview as still in learning (2007/08 learning probably necessary)</li> </ol> | <ol style="list-style-type: none"> <li>9. Learner self-identified in interview as being on a relevant formal training programme</li> <li>10. Learner self-identified in interview as continuing in employment with a linked promotion</li> <li>11. Learner self-identified in interview as continuing in employment with a linked increase in pay</li> <li>12. Learner self-identified in interview as continuing in employment with a linked increase in skills</li> <li>13. Learner self-identified in interview as continuing in employment with a linked increase in job security</li> <li>14. Learner self-identified in interview as in employment (previously learning) with a positive impact</li> <li>15. Learner's interview responses indicate income above the relevant regional age group average</li> <li>16. Learner self-identified in interview as in employment (not previously working) with a positive impact</li> </ol> |
|---|--|

### Neutral Destinations

Learners who have taken part in the survey but not given answers that trigger any of these sixteen routes to a positive destination are classed as Code 10 (current activity does not meet any of the criteria for a positive destination) unless they have given answers that show they are in one of the following neutral destinations:

- looking after the family/home where no suitable care services are available or affordable;
- in voluntary or unpaid work related to the 2007/08 learning;
- In voluntary or unpaid work linked to the job/career they want;
- temporarily sick, injured or disabled;
- long-term sick or disabled; or
- retired.