

i

For information

LSC Funding Guidance 2008/09

Funding Rates

Version 3

This version is intended to be the final rates document for 2008/09 but the written text remains subject to editing by the Central Office of Information (COI) print design team as part of the LSC printing protocols for final booklet production. The reference number for the final printed booklet will be LSC-P-NAT-080078.

December 2007

Of interest to everyone involved in delivering LSC-funded provision

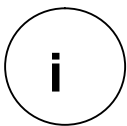
Further information

For further information, please contact the appropriate Learning and Skills Council office. Contact details for each office can be found on the LSC's website (www.lsc.gov.uk).

Learning and Skills Council
National Office
Cheylesmore House
Quinton Road
Coventry CV1 2WT

Tel: 0845 019 4170
Fax: 024 7682 3675

www.lsc.gov.uk



For information

Contents

Executive Summary	4
Version Control	7
Funding Rate Principles	8
National Funding Rate	10
16-18 funding model	13
Adult Learner Responsive funding model	19
Employer Responsive funding model.....	21
Annex A: Listed Funding Values	24
Annex B: Changes to SLN Values	26
Annex C: SLN Values for Diplomas	33
Annex D: Funding Rates for E2E	35
Annex E: Train to Gain Funding Values.....	36
Annex F: Apprenticeship SLN Values and Programme Weightings.....	37
Annex G: Rates Methodology	41
Annex H: Area-costs Uplift by Region	43

Executive Summary

December 2007

Funding Rates

This document forms the first part of LSC Funding Guidance for 2008/09 (referred to here as 'the Guidance') which sets out the Learning and Skills Council's (LSC) approach to, and the authoritative guidance for, the funding of LSC provision in 2008/09. It is a technical reference document, and should be used as a handbook for all LSC programme funding. All colleges, school sixth forms, providers and other organisations that receive funding from the LSC for the provision of education and training are required to comply with the Guidance. It provides the LSC's consolidated funding guidance for 2008/09.

Funding Guidance for 2008/09 will be published as a series of booklets, of which this document is one, in line with the LSC business cycle, which outline the main features of the LSC funding arrangements for 2008/09. Under the main heading *LSC Funding Guidance for 2008/09* each separate document is listed below, and will be available as they are published on the LSC's website (www.lsc.gov.uk/Providers/funding-policy).

- *Funding Rates*
- *Funding Formula*
- *Funding Principles, Rules and Regulations*
- *Learner Eligibility Guidance*
- *ILR Funding Compliance Advice and Audit Guidance for Providers*
- *ILR Funding Claims and Audit Returns*

They will update all the LSC various funding booklets for 2007/08 that applied to Further Education (FE), Work-based Learning (WBL), Train to Gain (TtG) and School Sixth Forms.

These booklets will be available first in draft from the LSC website. It is intended the final printed versions will be distributed to providers in printed format.

This document called *Funding Rates* is set out below.

- **Section 1** provides information on Standard Learner Number (SLN) funding values that apply to all the demand-led funding models
- **Section 2** provides information on the SLN values for 2008/09 under the 16 to 18 funding model.

- **Section 3** provides information on the SLN values for 2008/09 under the Adult Learner Responsive funding model.
- **Section 4** provides information on the SLN values for 2008/09 under the Employer Responsive funding model.
- **Annex A** states the listed SLN values for both the 16 to 18 and Adult Learner Responsive funding models. Some learning aims are commonly delivered in the evening as well as in the daytime. Evening rates existed in the 2007/08 funding approach and continue in the 2008/09 funding approach and are detailed in this annex.
- **Annex B** states the changes to SLN values following the LSC's annual review of guided learning hours. These values apply to both the 16 to 18 and Adult Learner Responsive funding models.
- **Annex C** describes the structure of the SLN values for the new Diplomas.
- **Annex D** sets out the funding values for E2E
- **Annex E** sets out the Train to Gain funding values
- **Annex F** sets out the SLN values and Programme Weightings for Apprenticeships.
- **Annex G** describes the methodology used to assign listed SLN values to qualifications
- **Annex H** sets out the values of the area-costs uplift

The guidance in this document is the definitive LSC guidance and takes precedence over any other separate documents.

Changes to the structure and format of rates in 2008/09

The funding approach has changed significantly in 2008/09, as described in the document *The 16-18, Adult Learner- and Employer-responsive Funding Models* published by the LSC in November 2007.

As a result, the funding rates which have previously been stated by learning aim in pounds, will now be stated in SLN terms. Under the 16-18 and Adult Learner Responsive funding models the rates will be stated in guided learning hours (glh), which are the basis of SLN values using the formula as described in *The 16-18, Adult Learner- and Employer-responsive Funding Models*. In simple terms, the SLN values for individual learning aims are calculated by dividing the glh by 450. Under the Employer Responsive funding model, the rates will be stated directly in terms of SLN values, as glh do not adequately describe this type of delivery.

The funding formula, as described in the *The 16-18, Adult Learner- and Employer-responsive Funding Models* and which will be confirmed in the *Funding Formula* booklet, will then use these SLN values as a basis for determining funding.

Intended recipients

Principals, chief executives, headteachers, directors of childrens' services, heads of providers, heads of sixth forms, finance directors and management information officers of providers delivering post-16 education and training.

Version Control

Version 1 to Version 2

- 1 In Annex B, changes to SLN values, learning aim reference 10026460 has been removed. This learning aim is a skill for life and is therefore unlisted as a policy.
- 2 The national funding rates for 08/09 have been added to Section 1.
- 3 SLN Values have been added for E2E at Annex D.
- 4 SLN Values for Train to Gain have been added at Annex E.
- 5 SLN Values for Apprenticeship elements have been added at Annex F.

Version 2 to Version 3

- 6 Terminology has been clarified to be consistent with the *Funding Formula* booklet
- 7 References to *The 16-18, Adult Learner- and Employer-responsive Funding Models* have been removed now the *Funding Formula* booklet has been published.
- 8 Details of the additional uplift for offenders in the community, introduced in 2007/08, have been added to Section 2.
- 9 In Annex C, the programme weighting of Diplomas has been changed to reflect the structure of the newly accredited qualifications.
- 10 Details of the implementation of the 'Train to gain flexibilities', specifically the 3% rates increase, are included in Section 4.
- 11 Annex F has been updated to show the most likely SLN value for main aims within Apprenticeships, rather than the Apprenticeship Element. This is because the Apprenticeship Element in 08/09 will be paid via the Main Aim, rather than via the Framework Aim, to ensure that the structure of the funding rates for Apprenticeships in 08/09 most closely matches that of 07/08, as agreed between the LSC and the Association of Learning Providers.
- 12 The letter descriptions of programme weighting factors within the Employer Responsive Model have been updated in Annex E. Previously the three main programme weighting factors were A – 1.0, B – 1.25 and C – 1.5. However, Technical Certificates within Apprenticeships use the same programme weightings as the Learner Responsive models (as they did in previous years) - A – 1.0, B – 1.12, C – 1.3, D – 1.6, E – 1.72, F – 1.4 and G – 1.92. To avoid confusion of B and C having different values depending on whether the learning aim is a Technical Certificate or a Main Aim, the three main programme weightings within the Employer Responsive Model are now A – 1.0, J – 1.25 and K – 1.5. Technical Certificates will continue to use the same programme weightings as the Learner Responsive models. This change has no impact on the numeric programme weighting values assigned to particular learning aims as used in the funding calculations.

Section 1

Funding Rate Principles

The Formula

1 The formula that underpins the demand-led funding models has been stated in previous Learning and Skills Council (LSC) consultations and documents and is repeated below.

2 $\text{Funding} = \text{SLN} \times \text{Rate per SLN} \times \text{Provider Factor} + \text{Additional Learning Support}$

3 This document details the SLN values relating to learning aims that are the basis of the SLN calculation. It also details some of the elements of the provider factor that require specific values to be associated with them.

4 The calculation of SLNs, the Provider Factor, Additional Learning Support and Funding is given in the *Funding Formula* booklet.

SLN Values

5 Each learning aim has an SLN Value reflecting the size of the learning aim irrespective of its duration. Learning aims are either funded at a listed SLN Value, or are unlisted.

6 In the 16-18 and Adult Learner Responsive models, listed SLN Values are used where there is a high degree of consistency amongst colleges and providers in the number of glh used to deliver the learning aim.

7 All learning aims within the Employer Responsive funding model are listed, based on the activity costs approach.

8 The national rate applied to the SLN includes a contribution to the overheads of the provider, who needs to prioritise how this will be allocated to competing demands within the organisation.

Listed SLN Values

9 The values for individually-listed learning aims are available for a learner who completes the aim, irrespective of the time taken to complete. The same SLN Value is payable irrespective of the duration of the learning aim.

10 The SLN Values (expressed in terms of glh) for the main individually listed learning aims are set out in Annex A of this Guidance.

11 The SLN Values for all listed learning aims may be found in the Learning Aims Database (LAD). These are stated in either glh or SLN, depending on the funding model. Where the values are expressed in glh, the SLN Values for individual learning aims are then calculated by dividing the glh by 450. Full details of the conversion rate between glh and SLN is described in the booklet *Funding Formula*.

12 An explanation of how learning aims are assigned listed SLN Values under the 16-18 and Adult Learner Responsive models can be found at Annex G of this document.

Unlisted learning aims

13 Under the 16-18 and Adult Learner Responsive models, where the number of glh that colleges and providers use to deliver a learning aim varies significantly, the appropriate SLN Value is determined from the planned glh recorded in the ILR. However, for schools all learning aims are listed, as schools do not return data on glh.

14 Some types of learning aim (such as basic skills) are unlisted due to particular Government and LSC policies.

15 To determine the SLN Value for a particular learning aim that is not individually listed, the provider should determine the total planned glh for the learning aim – this is the number of hours initially planned to deliver the learning aim, and will be recorded in the learning agreement.

16 The conversion between glh and SLN is described in booklet *Funding Formula*.

National Funding Rate

17 The national funding rates for 2008/09 were published by the LSC in December 2008. They are given in the table below:

Table 1: National Funding Rates

Funding Model	National Funding Rate
16-18 Learner Responsive: School Sixth Forms	£2,945
16-18 Learner Responsive: All Other Providers	£2,860
16-18 Apprenticeships	£2,860
Adult Learner-Responsive	£2,775
Employer-Responsive	£2,775

18 The LSC will inform providers of their funding rate per SLN for 2008/09 – either the national rate or a transitional protection rate where appropriate – along with their provider factor and other elements of the funding allocation.

Area-costs uplift

19 Previous research showed that there is a clearly marked difference in relative costs between London and the South East, and the rest of England.

20 There is no change to area costs in 2008/09. Table 2 shows the area-costs uplift for 2008/09.

Table 2: Area-costs uplift 2008/09.

Local LSC region and districts	Uplift 2008/09
London A (Inner London)	20%
London B (Outer London)	12%
Berkshire (fringe and non-fringe)	12%
Crawley	12%
Surrey	12%
Buckinghamshire fringe	10%
Hertfordshire fringe	10%
Buckinghamshire non-fringe	7%
Oxfordshire	7%
Essex fringe	6%
Kent fringe	6%
Bedfordshire	3%
Hertfordshire non-fringe	3%
Hampshire and Isle of Wight	2%
West Sussex non-fringe	1%
Rest of England	0%

21 Further details on area costs are in later sections of this document as applicable to each model. The detailed area cost areas are at Annex H to this document.

Disadvantage uplift

22 Disadvantage uplift affects all three funding models. In all funding models, one part of this is based on the Index of Multiple Deprivation 2004 (IMD2004).

23 In the 16-18 and Learner Responsive models, there are additional categories of disadvantaged learners who qualify for disadvantage uplift independently of IMD2004. These arrangements are described in later sections of this document.

Index of Multiple Deprivation 2004

24 IMD 2004 gives a value of relative deprivation for every lower layer super-output area (SOA) in the country, and is widely used in Government. It is based on income deprivation (22.5 per cent), employment deprivation (22.5 per cent), health

deprivation and disability (13.5 per cent), education, skills and training deprivation (13.5 per cent), barriers to housing and services (9.3 per cent), crime (9.3 per cent) and living environment deprivation (9.3 per cent).

25 The IMD2004-based disadvantage uplift will mean the following.

- a. Funding for learners living in the 27 per cent most deprived super-output areas of the country will be increased for disadvantage.
- b. The funding uplift for these learners ranges from 8-32 per cent, depending on the level of deprivation recorded in IMD 2004.

26 The uplift values for individual postcodes will be published on the LSC website.

Section 2

16-18 funding model

Scope of the model

27 The 16-18 model covers all provision in colleges of further education, independent providers and school sixth forms, for any learner starting a programme who is above the compulsory school leaving age but has not turned 19 on 31 August of the year in which they begin a specific episode of learning. It covers all learners in that age range:

- in school sixth forms
- in colleges and other providers following further education programmes
- taking the new Diplomas age 16-18
- undertaking a Programme-led Apprenticeship (PLA) where the learner has not been enrolled on a full Apprenticeship framework
- participating in Entry to Employment (E2E)
- undertaking progression pathways within the Foundation Learning Tier (FLT)
- undertaking Employed Apprenticeships, for planning and budgeting purposes.

Programme-weighting factors

28 Programme weightings recognise that some programmes are more costly to deliver than others. There are seven programme-weighting factors in the 16-18 model:

Table 3: Programme-weighting factors.

	LSC programme weightings
A	1
B	1.12
C	1.3
D	1.6
E	1.72
Basic skills (F)	1.4
G	1.92 (See paragraphs [51-55] and [72-74])

Area-costs uplift

Area-costs uplift factors for merged institutions and geographically dispersed delivery

29 The area-costs uplift factor may change when institutions merge, or where provision is delivered across a wide geographical area. Where institutions merge, the area-costs uplift will be determined by the geographical location of the headquarters of the merged institution. However, each situation will be treated on its merits to ensure that no unanticipated outcome occurs as a consequence of applying the principle.

30 Where provision is delivered to a wide geographical area, the area-costs uplift will be calculated as a weighted average of the area-costs uplift for each delivery centre.

Disadvantage uplift factor

31 The IMD2004-based disadvantage uplift as described in Section 1 applies to all providers and represents the majority of disadvantage funding. However, providers who return ILR data to the LSC can claim disadvantage uplift for learners in the following categories as an alternative to using IMD2004 for those learners.

32 The following groups of learners are eligible for the disadvantage-uplift factor of 12 per cent:

- a. basic skills learners (refer to the *Funding Principles, Rules and Regulations* document for clarification of when a basic skills learner is entitled to the disadvantage uplift)
- b. those living in hostels and residential centres
- c. those with mental health problems
- d. travellers
- e. those whose statutory education has been interrupted
- f. those in care or who have recently left care
- g. asylum seekers eligible for LSC FE funding according to the *Learner Eligibility Guidance*
- h. refugees
- i. ex-offenders
- j. offenders serving their sentence in the community
- k. full-time carers
- l. those recovering from alcohol or drug dependency
- m. learners funded by the Single Regeneration Budget.

33 A higher disadvantage uplift of 14 per cent may be claimed for the following individuals:

- a. people living in supported accommodation provided by a registered social landlord (RSL) or housing association (HA) registered with the Housing Corporation, or provided by another non-profit-making organisation in a building owned by an RSL or HA
- b. people living in supported accommodation provided by a registered charity
- c. people living in supported accommodation registered with the local authority or National Housing Federation.

34 'Supported accommodation' means foyers, hostels and other forms of managed accommodation providing housing management support to the residents.

35 In addition to the disadvantage uplifts described above, offenders serving their sentence in the community that are studying either an approved Skills for Life qualification (excluding key skills and GCSEs) or a non-approved Entry Level Skills for Life qualification are eligible for an additional disadvantage uplift of 33 per cent. The usual disadvantage uplift factor should be scaled up by this proportion for these learners (i.e. if the disadvantage uplift would otherwise be 12 per cent, then the value should be $1.12 \times 1.33 = 1.4896$). Offenders on day release from Category D prisons are not eligible for the additional uplift.

SLN Values for Specific Learning Aims

36 SLN Values for all learning aims have been considered by the technical sub-group of the LSC's Finance and Funding Board. The group examined data extracted from the individualised learner record (ILR) in 2006/07 and has recommended changes to the SLN Values for all provision funded using the 16-18 model. Of these changes to listed values, 73 learning aims were already listed in 2007/08 and a further 101 learning aims were loadbanded in 2007/08. A final 8 learning aims were listed in 2007/08 but have glh data in 2006/07 that is inconsistent, and some changes have been made to their SLN Values. These changes are detailed in Annex B to this document.

37 In 2008/09, a number of learning aims that were previously loadbanded for FE providers now have listed values. It should be noted by providers that having a listed value simply means that the LSC will apply a standard rate to the learning aim. It does not imply any sort of priority, as it is purely based on consistent glh delivery.

38 Some of these changes demand specific mention:

- a. Evidence shows that GCE AS/A2 and A Level General Studies is delivered in substantially fewer glh than the 2007/08 listed rate would imply. The 2007 review of glh was consistent with the 2006 review which recommended a decrease in the rate, and as a result the rates will be adjusted in 2008/09 in accordance with the statement in the document *Funding Rates – Changes for 2007/08*, published by the LSC in January 2007. GCE AS/A2 Level General Studies is listed at 36 glh in 2008/09. GCE A Level General Studies is listed at 72 glh in 2008/09.
- b. Following the 2007 review of glh, the listed rates for GCE AS/A2 and A Level Critical Thinking are not being adjusted in 2008/09, as the glh is

not sufficiently consistent around the average. As with all other qualifications, the LSC will continue to monitor this on an annual basis.

- c. Evidence shows that Level 3 GNVQ Successors are delivered in substantially fewer glh than the 2007/08 listed rate would imply. Following the 2007 review of glh, and as recommended by the technical sub-group of the LSC's Finance and Funding Board, the Edexcel National Diplomas and OCR Extended National Diplomas are listed at 1080 glh in 2008/09. The change in funding methodology (in particular the removal of the 450-569 glh plateau) goes some way to reducing this impact. The listed rates for Edexcel National Certificates and National Awards and the OCR National Diplomas and National Certificates are not being adjusted in 2008/09.
- d. Evidence shows that Applied GCE AS/A2 and A Levels (single award) are delivered in substantially fewer glh than the 2007/08 listed rate would imply. Following recommendations from the technical sub-group of the LSC's Finance and Funding Board, Applied GCE AS/A2 Levels are listed at 180 glh and Applied GCE A Levels are listed at 360 glh. Double Award Applied GCEs are not affected by this change. This will be subject to further review for 2009/10.

39 Some learning aims are not delivered in consistent glh and have as a result been loadbanded in the past. The notion of loadbanding remains in Demand-led Funding, although there will be no banding of glh. Instead, the learning aims will be unlisted and the SLN Value derived directly from the glh as recorded in the ILR.

40 As described in Section 1 above, listed SLN Values are summarised in the annexes to this document and are recorded in the Learning Aims Database (LAD).

41 Schools do not return data to the LSC using the ILR, rather they return data to the Department of Children, Schools and Families (DCSF) using the Schools Census. The Schools Census does not record glh, and therefore any learning aims that are delivered in schools but which are unlisted for other providers will require a schools' listed SLN Value.

42 The schools' listed SLN Value for learning aims that are unlisted in other providers will be detailed on the LAD.

43 Annex C details the funding arrangements for the new Diplomas.

44 Annex D contains the SLN Values and specific funding arrangements for E2E.

Entitlement

45 The 16-18 entitlement has a listed SLN value of 114 glh. This does not include any SLN Value for Key Skills, which are funded entirely outside of the entitlement from 2008/09.

46 The SLN Value associated with entitlement is included in the learner-level SLN Value before the application of the SLN cap. That is, the sum of the learner's SLN including the entitlement SLN Value will be capped at 1.75 in any one academic year.

Key Skills and Functional Skills

47 Key Skills and Functional Skills are funded separately from the entitlement funding in 2008/09.

48 Each core Key Skill has a listed SLN Value based on 36 glh.

49 Functional Skills are unlisted in 08/09. This is to reflect the varied client group. 16-18 year old learners studying Functional Skills as part of a larger programme are expected to require a similar number of glh as Key Skills. However, adult learners who would have traditionally accessed Skills for Life qualifications will require an individually tailored programme and as a result the glh could be quite varied.

Specialist Colleges

50 The 10 per cent uplift for specialist colleges is removed from 2008/09. The necessary additional costs associated with this type of provision are reflected in the programme weightings, which now include an additional value, as stated in Section 1.

Specialist Resources Programme Weighting

51 During 2007/08, the LSC has met with each group of colleges that are currently eligible for the specialist college factor. The aim of these meetings was to find a more appropriate way of funding the necessary additional costs associated with each of these types of provider.

52 In 2008/09, there will be no specialist college factor in the funding formula. The higher costs that made the specialist college factor necessary will be reflected using programme weightings.

53 For 2008/09, a specialist resources programme weighting will apply to certain qualifications in the agriculture and horticulture sector, for a certain group of providers who prove to have the necessary resources to deliver the qualifications in a specialised way.

54 A new programme weighting factor 'G' will be available. Certain qualifications, identified on the LAD, that currently have a programme weighting of 'E – 1.72' will be assigned the new programme weighting.

55 Providers that have specialist resources, as identified by the LSC's Finance and Funding Board and advised by the relevant Sector Skills Council (SSC), will be funded at the higher programme weighting of 1.92 for these qualifications. Those providers without specialist resources that deliver these qualifications will continue to get the 1.72 programme weighting.

Residential Accommodation for 16-18 year olds

56 The Care Standards Act 2000, and related regulations in 2002, placed further responsibilities on providers offering residential accommodation for learners under the age of 18.

57 Higher costs are associated with complying with the Care Standards regulations. These extra costs apply to young people aged under 18 who are living away from home and where the college is considered 'in loco parentis'.

58 Providers registered with Ofsted for inspection under the Care Standards regulations will be eligible for an additional weighting in their provider factor from 2008/09.

59 This additional uplift will be calculated for those registered providers from the number of LSC funded learners in 'residential accommodation on campus' as recorded in the ILR. Further details will be published in due course.

Section 3

Adult Learner Responsive funding model

Scope of the Model

60 The scope of the Adult Learner Responsive model is the provision that was branded as further education (FE) adult provision in 2007/08, apart from those employer-based national vocational qualifications (NVQs) that were delivered within FE mainstream provision. This employer-based provision, which is out of scope of this model, is included within the employer responsive model.

61 The model covers those learners on eligible provision who are aged 19 or over on 31 August of the funding year in which they start a specific episode of learning. This reflects the definition of age used for the 16-18 model.

62 This model excludes adult safeguarded learning (including that personal and community development learning currently delivered by FE colleges).

Principles

63 The SLN Values in the Adult Learner Responsive model are currently identical to those in the 16-18 model. Therefore the SLN values are not repeated in this section, but providers should refer to the appropriate parts of Section 2.

Tuition Fees

64 The tuition fee assumption will be increased in 2008/09 to 42.5 per cent, as set out in the LSC's Statement of Priorities.

Programme weightings

65 Programme weightings are the same in the Adult Learner Responsive model as in the 16-18 model. Provider should refer to Section 2 for guidance on this.

Area Costs

66 Area costs are the same in the Adult Learner Responsive model as in the 16-18 model. Providers should refer to Section 2 for guidance on this.

Disadvantage

67 Disadvantage is the same in the Adult Learner Responsive model as in the 16-18 model. Providers should refer to Section 2 for guidance on this.

Specific Learning Aims

68 The SLN Values for all learning aims have been considered by the technical sub-group of the LSC's Finance and Funding Board. The group examined data extracted from the individualised learner records (ILR) (F04) in 2006/07 and has recommended changes to the SLN Values for 73 learning aims that are already listed. A further 101 learning aims that were loadbanded in 2007/08 will become listed in 2008/09. A final 8 learning aims were listed in 2007/08 but have glh data in 2006/07 that is inconsistent, and some changes have been made to their SLN Values. These changes are detailed in Annex B to this document.

69 In 2008/09, a number of learning aims that were previously loadbanded have listed SLN Values. It should be noted by providers that having a listed SLN Value simply means that the LSC will apply a standard rate to the learning aim. It does not imply any sort of priority, as it is purely based on consistent glh delivery.

70 Further explanation of some of the most significant of these SLN Value changes is in Section 2.

71 Some learning aims are not delivered in consistent glh and have as a result been loadbanded in the past. The notion of loadbanding remains in Demand-led Funding, although there will be no banding of glh. Instead, the learning aims will be unlisted and the SLN Value derived directly from the glh as recorded in the ILR.

Specialist Resources Programme Weighting

72 As stated in Section 2, for 2008/09, a specialist resources programme weighting will apply to certain qualifications in the agriculture and horticulture sector, for a certain group of providers who prove to have the necessary resources to deliver the qualifications in a specialised way.

73 A new programme weighting factor 'G' will be available. Certain qualifications, as identified on the LAD that currently have a programme weighting of 'E – 1.72' will be assigned the new programme weighting.

74 Providers that have specialist resources, as identified by a sub-group of the LSC's Finance and Funding Board, that deliver these qualifications will be funded with the higher programme weighting of 1.92. Those providers without specialist resources that deliver these qualifications will continue to get the 1.72 programme weighting.

Section 4

Employer Responsive funding model

Scope

75 The scope of the employer-responsive model is the provision that, in 2007/08, was being delivered as Apprenticeships, Train to Gain and national vocational qualifications (NVQs) delivered wholly or partially in the workplace within mainstream further education (FE).

76 Apprenticeships include all ages of Apprenticeships, Advanced Apprenticeships, Higher-level Apprenticeships and Apprenticeships for Adults. They also include Apprentices who are non-employed learners following a full Apprenticeship framework and who were previously funded through Work-based Learning (WBL) in 2007/08. It does not include learners on Programme-led Apprenticeships (PLAs) who were funded through FE in 2007/08, who are funded by the respective 16-18 or adult learner-responsive models in 2008/09.

77 Train to Gain includes all employer-based provision, including all NVQs and Skills for Life delivered on employer premises.

78 FE provision includes all employer-based delivered NVQs at Levels 1 to 4. Some of the FE provision may, in 2007/08, have been branded as Train to Gain 'type A'; however, the defining factor is whether it is delivered to employees either wholly or partially on employer premises. NVQs delivered in the workplace to learners aged 16-18 will remain funded using the 16-18 model. FE NVQ provision delivered wholly on provider premises will be funded by the 16-18 or adult learner-responsive models, as appropriate.

79 The 16-18 Apprenticeship provision will have a separate budget within the employer-responsive model. For 2008/09, the provision will be planned and managed using the 16-18 model, but funding will be calculated and paid using the employer-responsive model.

Train to Gain

80 In 2008/09, we are bringing together the funding for two types of provision, as described in the scope of the Employer Responsive model above:

- a. NVQs delivered wholly or partially in the workplace which were funded through FE in 2007/08
- b. NVQs in the workplace funded through Train to Gain in 2007/08 (including that funded in 2007/08 through the National Employer Service).

81 In 2007/08, slightly different funding rates were paid for this provision, and these will be aligned in 2008/09.

82 In 2007/08, in both FE and Train to Gain there was a higher and lower rate available for this provision. However, the ratio between these is different: in FE, the lower rate is two-thirds of the higher rate, while in Train to Gain the lower rate is half of the higher rate.

83 The LSC commissioned work into the 'activity costs' of Train to Gain provision during 2007, following a similar approach to that adopted previously for Apprenticeships. Based on the recommendations of the first phase of that work, we are rebalancing the lower and higher rates for this provision in 2008/09 so that the lower rate is two-thirds of the higher rate. This will involve a small reduction in the current Train to Gain higher rate and a larger increase in the lower rate to balance the overall costs within the budget available.

84 The SLN Values and programme weightings which will apply to Train to Gain provision in 2008/09 are shown in annex G. The SLN Values given apply whether the provision is fully-funded or co-funded. The rates paid for co-funded provision are adjusted to take into account the assumed employer/learner contribution of 42.5%.

85 The same SLN Values apply to all NVQ provision in 2008/09 delivered through Train to Gain. Further activity costs work is being undertaken, focussed on identifying where cost differences are sufficient to mean that different NVQs should receive different funding rates.

86 An additional uplift of 3 per cent is applied to Train to Gain learning aims as part of the funding formula. This is the implementation of the general rates increase announced as part of the Train to Gain flexibilities.

87 The *Principles, Rules and Regulations* document confirms the basis on which providers should claim the higher and lower values. This is a development of the current approach in Train to Gain.

Apprenticeships

88 The funding values for Apprenticeships in 2007/08 were set as part of an extensive review of the costs of delivery. These will be used as the basis for the 2008/09 values, although these will be expressed in SLN terms for consistency with the funding of other programmes.

89 The SLN Value for the Apprenticeship will be split into three elements:

- a. NVQ/Competence-based element
- b. Technical certificate (depending on Framework)
- c. Key skills (if applicable)

90 The SLN Values for Technical Certificates and Key Skills are set on a consistent basis with the 16-18 and Adult Learner Responsive funding models to ensure consistency of funding. That is, they are based on guided learning hours.

91 The SLN Values for the NVQ/Competence-based element of Apprenticeship frameworks can be found at annex H. These have been calculated to balance the level of funding for a fully-funded apprenticeship to the appropriate financial value, based on the approach used in the activity costs work on Apprenticeships. The starting point has been the 2007/08 rates, but where a rates change was planned for 2008/09 as a result of the final phase of implementation of the activity costs work, this has also been applied. A 1.6% rates increase has been applied in 2008/09, as set out in *Our Statement of Priorities*.

Employer Contributions

92 The same SLN Values will be used for adults as for 16-18. 19+ Apprenticeships are classed as co-funded, which results in reduced funding being paid for this provision in line with the expected employer contributions.

93 Providers are reminded that expected employer contributions in Apprenticeships are not necessarily cash payments, but can be contributions to the delivery of the activity (for example, by use of employers’ own staff, premises, materials and/or equipment in the delivery of the Apprenticeship).

94 The approach for moving the expected employer contribution towards 50 per cent by 2010 that was agreed with the Association of Learning Providers (ALP) will continue in 2008/09. The expected employer contribution will increase from the level in 07/08 to the next anticipated step along the projected trajectory towards 50 per cent (see Table 4).

Table 4: Projected trajectory for increasing the expected employer contribution to 50 per cent.

Academic Year	Expected Employer Contribution
2008/09	42.5%
2009/10	47.5%
2010/11	50%

95 If the expected employer contribution is already greater than 42.5 per cent, it will not be increased until the projected trajectory exceeds it.

96 The expected employer contributions stated above are in terms of the difference between the fully-funded 16-18 rate and the co-funded adult rate. The adult national funding rate (£2,775) is lower than the 16-18 national funding rate (£2,860) and hence the expected employer contribution as a proportion of the adult rate is a lower value. The funding calculations, and hence the values on the Learning Aims Database, are based on the adult rate. In addition, Key Skills had a lower expected employer contribution in 2007/08 than other learning aims and continue to do so in 2008/09.

97 The employer contribution percentage for each learning aim in Apprenticeships can be found on the Learning Aims Database.

Annex A: Listed Funding Values

16-18 and Adult Learner Responsive

Qualification	SLN Value (glh)	Listed Evening Value where applicable (glh)
GCE AS level or A2 level (except General Studies)	150	90
GCE AS level or A2 level in General Studies	36	36
Applied GCE A-Level Double Award (12 units)	900	540
Applied GCE AS-Level or A2-Level Double Award (6 units)	450	270
Applied GCE A-Level (6 units)	360	216
Applied GCE AS-Level or A2-Level (3 units)	180	108
GCSE	100	60
Short-course GCSE	50	30
Applied GCSE	200	120
Key skills qualifications (Application of Number, Communications and ICT)	36	
NVQ (delivered entirely at the provider in at least 450 glh)	520	
Each additional NVQ unit	30 per unit	
International Baccalaureate (Diploma)	1350	
Access to Higher Education (studied in at least 450 glh)	520	
EDEXCEL National Diploma (18 Units)	1080	
EDEXCEL National Certificate (12 Units)	900	
EDEXCEL National Award (6 Units)	450	
Edexcel Level 1 Introductory Diplomas (6 units)	450	
Edexcel Level 2 First Diplomas (6 units)	450	
OCR Level 3 National Extended Diploma (18 units)	1080	
OCR Level 3 National Diploma (12 units)	900	
OCR Level 1, Level 2 and Level 3 National Certificate (6 units)	450	

School sixth forms only:

Qualification	SLN Value (glh)
Edexcel Level 1 Introductory Certificates (3 units)	225
Edexcel Level 2 First Certificates (3 units)	225

Comments

- Entitlement for 16-18 year old learners will be funded at 114 glh (0.253 SLN). This excludes Key Skills, which are funded separately.
- GCE and GCSE double awards are funded at double the standard rate.

Annex B: Changes to SLN Values

16-18 and Adult Learner Responsive

SLN Value changes as a result of the 2007 review of glh

Learning aim reference	Learning aim title	Awarding body	Level	2007/08 equivalent SLN Value (glh)	2008/09 SLN Value (glh)
10061137	Advanced Diploma in Purchasing and Supply	CIPS	5	250	214
10058539	Award for Trade Union Learning Representatives	NOCN	3	90	60
10057821	Award in Circuit Training	YMCA	2	30	25
50016179	Award in Community Sports Leadership	SPORTLUK	2	45	35
10053220	Award in Digital Applications for IT Users	EDEXCEL	1	90	Unlisted
50014365	Award in Risk Assessment Principles and Practice	CIEH	3	20	15
10050000	Award in Speaking and Listening in another Language	ABC	1	40	33
10049770	Award in Using ICT as a Tool for Learning	NOCN	2	90	68
10044152	BTEC Award in Infection Control	EDEXCEL	2	60	35
10041126	BTEC Award in Photography	EDEXCEL	3	120	119
1005523X	BTEC Award in Preparing for Enterprise (Pilot)	EDEXCEL	2	90	72
10025339	BTEC Certificate for Teaching Assistants	EDEXCEL	3	180	135
10041874	BTEC Diploma in Developing Counselling Skills	EDEXCEL	3	300	225
10023951	Certificate for Adult Literacy Subject Support	CG	3	105	87
10023987	Certificate for Adult Numeracy Subject Specialists	CG	4	120	118
10061630	Certificate for Event Stewards	NCFE	2	60	45
10061599	Certificate for Service Sector Receptionists	VTCT	2	120	90
10042210	Certificate for Teaching Assistants	OCR	2	135	Unlisted
10020214	Certificate for Trade Union Health and Safety Representatives	NOCN	3	150	105
10045740	Certificate for Trade Union Representatives	NOCN	3	150	108
10048091	Certificate in Art and Design	NOCN	1	135	Unlisted
10028729	Certificate in Book-keeping	IAB	3	60	48

Learning aim reference	Learning aim title	Awarding body	Level	2007/08 equivalent SLN Value (glh)	2008/09 SLN Value (glh)
10052148	Certificate in Business and Administration (Organisations and People)	EDI	2	135	Unlisted
10010531	Certificate in Career Planning	ASDAN	1	90	165
10016521	Certificate in Citizenship Studies (Entry 3)	OCR	E	55	63
10050784	Certificate in Coaching	FIRST	2	105	89
10058229	Certificate in Coaching	FIRST	3	255	173
10057328	Certificate in Contact Centre Techniques	NCFE	1	90	68
10061423	Certificate in Cosmetic Make-Up	VTCT	2	132	99
10049058	Certificate in Counselling Studies	CPCAB	3	120	96
10018050	Certificate in Credit Management	ICM	3	360	270
10056750	Certificate in Developing Environmental Awareness	OCNW	2	60	45
10035886	Certificate in Developing Personal Health and Fitness	ABC	1	60	Unlisted
1002489X	Certificate in Drug Awareness	NCFE	1	25	17
1003268X	Certificate in ESOL Subject Specialist	CG	4	120	108
1001486X	Certificate in FE Teaching Stage 3	CG	4	165	124
10047542	Certificate in First Aid for those Caring for Children	ASET	2	20	15
50010177	Certificate in French Listening (Preliminary) (Asset Languages)	OCR	1	40	30
50010992	Certificate in French Reading (Preliminary) (Asset Languages)	OCR	1	40	30
10019017	Certificate in Health and Safety in the Workplace	RSPH	1	7	9
1003514X	Certificate in Heating and Ventilation Installation	CG	3	315	403
10018773	Certificate in Housing	CIH	2	120	105
10018219	Certificate in Logistics and Transport	CILTUK	3	240	Unlisted
10061265	Certificate in Nail Technology	VTCT	2	125	89
10063043	Certificate in Occupational Health and Safety	NEBOSH	3	82	90
10045004	Certificate in Paediatric First Aid	FAQ	2	25	19
10021474	Certificate in Personal Safety Awareness	ASET	1	17	Unlisted
10033579	Certificate in Plumbing Studies	CG	3	530	425
10011675	Certificate in Preparation for Employment	OCR	2	55	41
10011687	Certificate in Preparation for Employment	OCR	1	60	45

Learning aim reference	Learning aim title	Awarding body	Level	2007/08 equivalent SLN Value (glh)	2008/09 SLN Value (glh)
10020767	Certificate in Safer Moving and Handling (Including People)	NCFE	2	11	14
10024499	Certificate in Small Animal Care	ABC	2	135	169
10029680	Certificate in Supervising Health and Safety	CIEH	2	35	26
10061605	Certificate in Swedish Massage	VTCT	3	120	90
10034894	Certificate in the Treatment and Management of Injuries in Football	FIRST	2	105	70
10051909	Certificate in The Treatment and Management of Injury in Football	FIRST	3	45	36
10060285	Certificate in Touch-Typing (e-type)	BCS	2	55	41
10016466	Certificate of Competence in Fork Lift Truck Operations	NPTC	2	45	32
10017100	Certificate of Competence in the Safe Use of Mowers	NPTC	2	17	13
50010499	Diploma in Additional Aromatherapy Techniques	VTCT	3	230	173
1006249X	Diploma in Additional Reflexology Techniques	VTCT	3	230	160
50011194	Diploma in Anatomy and Physiology	VTCT	3	210	135
5001044X	Diploma in Aromatherapy	VTCT	3	200	148
5001030X	Diploma in Body Massage	VTCT	3	180	123
10061496	Diploma in Epilation	VTCT	3	160	118
10025881	Diploma in Facial Electrical Treatments	ITEC	3	105	Unlisted
10025728	Diploma in Indian Head Massage	ITEC	3	75	56
50010372	Diploma in Non-Medical Nutritional Advice	VTCT	3	120	82
10062506	Diploma in Reflexology	VTCT	3	200	147
50010335	Diploma in Remedial Massage	VTCT	3	250	170
10062415	Diploma in Sports Massage Therapy	VTCT	3	300	204
10062257	Diploma in Stone Therapy	VTCT	3	230	142
10050346	Diploma in Therapeutic Counselling	CPCAB	4	555	420
00230033	Fitness Instructing (Gym) Certificate	YMCA	2	135	102
10058217	Intermediate Certificate in Personal Finance	IFS	2	90	76
10056464	Intermediate Certificate in Wines and Spirits	WSET	2	16	20
10039351	Professional Diploma in Marketing	CIM	4	285	214

Learning aim reference	Learning aim title	Awarding body	Level	2007/08 equivalent SLN Value (glh)	2008/09 SLN Value (glh)
10019005	Progression Award in Health and Safety in the Workplace	CG	2	120	103
00255092	Progression Award in Nurse Training & Health Studies (Level 2)	OCNW	2	75	56
00259814	Water Regulations	BPEC	1	11	8
00211149	Word Processing (Beginners)	NIAT	X	17	20
10016296	Advanced Certificate in Counselling Skills	AQA	3	Unlisted	150
10007854	Advanced Music Performance	ABRSM	3	Unlisted	87
00228957	Air Fares (Construction) and Ticketing Level 1	WAFT	X	Unlisted	60
1002413X	Award in Assessing Candidates' Performance Through Observation	OCR	3	Unlisted	64
10049940	Award in Speaking and Listening in another Language (Entry 2 and 3)	ABC	E	Unlisted	30
00271413	Book-keeping and Accounts	CG	X	Unlisted	27
10018918	BTEC Certificate in Public Services	EDEXCEL	1	Unlisted	450
10049678	Certificate for Progression	NOCN	2	Unlisted	180
10049642	Certificate for Progression	NOCN	1	Unlisted	150
10049629	Certificate for Progression (Entry 3)	NOCN	E	Unlisted	90
10011651	Certificate in Career Planning	OCR	1	Unlisted	51
10013039	Certificate in Child Development	OCR	E	Unlisted	108
10006503	Certificate in Childminding Practice	CACHE	3	Unlisted	15
10024712	Certificate in Developing Skills for Early Years Practice	NCFE	2	Unlisted	90
10027555	Certificate in Drama (Entry 1, 2 and 3)	WJEC	E	Unlisted	70
10035692	Certificate in Electrotechnical Technology	CG	2	Unlisted	450
10010257	Certificate in English	WJEC	E	Unlisted	96
10010087	Certificate in English A	AQA	E	Unlisted	114
10012503	Certificate in French	OCR	E	Unlisted	60
10010105	Certificate in French A (Entry 2 and 3)	AQA	E	Unlisted	66
10010634	Certificate in History	EDEXCEL	E	Unlisted	120
10055514	Certificate in ICT Skills for Life	CG	E	Unlisted	36
10059386	Certificate in ICT Skills for Life	OCNW	E	Unlisted	30
10012497	Certificate in Information and Communication Technology	OCR	E	Unlisted	60
10036052	Certificate in Life Skills (Entry 1	OCNW	E	Unlisted	468

Learning aim reference	Learning aim title	Awarding body	Level	2007/08 equivalent SLN Value (glh)	2008/09 SLN Value (glh)
	and 2)				
00270781	Certificate in Make-Up and Manicure	VTCT	2	Unlisted	108
10010658	Certificate in Modern Foreign Languages	EDEXCEL	E	Unlisted	64
10015012	Certificate in Music Technology	NCFE	2	Unlisted	150
10022910	Certificate in Personal, Social and Health Education	AQA	E	Unlisted	105
10028985	Certificate in Personnel Practice	CIPD	3	Unlisted	136
10010671	Certificate in Physical Education	AQA	E	Unlisted	72
10022934	Certificate in Preparation for Working Life	AQA	2	Unlisted	48
10023847	Certificate in Science (Single Award)	EDEXCEL	E	Unlisted	54
10025947	Certificate in Site Management	CIOB	4	Unlisted	216
10041151	Certificate in Support Work in Schools (Pilot)	CACHE	2	Unlisted	15
10025431	Certificate in Teaching English to Speakers of Other Languages	TCL	4	Unlisted	130
10031418	Certificate in Teaching Learners with Specific Learning Difficulties (Dyslexia)	OCR	4	Unlisted	90
1001701X	Certificate in Text Processing	OCR	3	Unlisted	60
10037536	Certificate in Travel and Tourism	CG	2	Unlisted	60
1005375X	Certificate in Travel and Tourism	CG	3	Unlisted	60
00276567	Certificate of Achievement in Oral Communication Skills: Pre Entry 2: Access	ESB	E	Unlisted	84
00269180	Certificate of Proficiency	BASSC	X	Unlisted	60
00103800	CG 0220 Amenity Horticulture Phase 2 Common Subjects	CG	2	Unlisted	198
00111513	CG 4351-03 Computer-aided Draughting and Design using AutoCAD - Three-Dimensional Design	CG	2	Unlisted	43
00271126	Chainsaws - Basic Felling Techniques (up to 200mm in diameter)	LANTRA	2	Unlisted	18
00270457	Changeover Core Domestic Gas Safety Assessment	ERS	U	Unlisted	16
00257705	Changeover Domestic Natural Gas safety to Commercial Natural Gas Safety	CITB	3	Unlisted	16
00269203	Cisco Networks Level 2	ASET	2	Unlisted	70
00274656	Computer Aided Engineering Part 2	CG	3	Unlisted	85

Learning aim reference	Learning aim title	Awarding body	Level	2007/08 equivalent SLN Value (glh)	2008/09 SLN Value (glh)
10012540	Construction Award	J505	2	Unlisted	459
00269394	Construction Skills Certification Scheme	CITB	X	Unlisted	36
00270881	Counselling - Level 2 Certificate in Counselling Skills	ABC	2	Unlisted	136
00235130	Customer Care	NCFE	1	Unlisted	30
00270616	Customer Service Quality	ASET	3	Unlisted	30
00114132	Day Skipper Shorebased	RYA	1	Unlisted	50
00274495	Developing Skills in Carpentry and Joinery	ASET	1	Unlisted	36
00270763	Digital Photography (Advanced)	NIAT	X	Unlisted	16
10049654	Diploma for Progression	NOCN	1	Unlisted	244
10024037	Diploma in Aromatherapy	ITEC	3	Unlisted	90
10024025	Diploma in Reflexology	ITEC	3	Unlisted	90
10049964	Double Award in Practical Languages (Entry 2 and 3)	ABC	E	Unlisted	60
00268530	ECDL Advanced - Spreadsheets	BCS	3	Unlisted	36
00272142	Essential Electrics	CITB	X	Unlisted	18
00206793	FA Teaching Certificate	FOOTBALL	1	Unlisted	20
00120417	Fares and Ticketing	IATA	1	Unlisted	60
00269438	Football Academy	ASET	2	Unlisted	166
00253854	Foundation Programme	BICS	1	Unlisted	30
10025467	Graded Examination in Speech	ESB	2	Unlisted	36
00221814	Hairdressing - Foundation Certificate	NCFE	2	Unlisted	90
00263227	Holistic Facial Massage	NCFE	2	Unlisted	60
10007842	Intermediate Music Performance	ABRSM	2	Unlisted	87
00267026	Introductory Certificate in Team Leading	ILM	2	Unlisted	22
00270261	Level 1 National Award in Customer Care	NCFE	1	Unlisted	30
00271547	Level 2 Certificate in Exercise and Fitness Knowledge	YMCA	2	Unlisted	52
00268096	Lip Reading Skills	NOCN	1	Unlisted	60
00284027	MCA Signals	MCA	2	Unlisted	9
00274729	National Award in Conflict Management	ASET	1	Unlisted	30
00274743	National Award in Introduction to Work	ASET	1	Unlisted	30
00112262	National Certificate	NEBDN	3	Unlisted	99
00221980	Photoshop and Digital Imaging Level 1	NCFE	1	Unlisted	20
00117764	Pre-entry Certificate in Newspaper Journalism (20 week postgraduate)	NCTJ	H	Unlisted	324
00262034	Pre-Vocational Certificate	ESB	M	Unlisted	30

Learning aim reference	Learning aim title	Awarding body	Level	2007/08 equivalent SLN Value (glh)	2008/09 SLN Value (glh)
00255114	Progression Award in Combined Studies (Level 3)	OCNW	3	Unlisted	120
10032666	Progression Award in Community Justice	CG	3	Unlisted	210
00271241	Rough Terrain Telescopic Lift Truck (Pallet and Bulk) (up to 9 metres) - 3 day	LANTRA	X	Unlisted	18
00270903	Sage Accounts	ABC	X	Unlisted	24
00271430	Shorthand Speed	CG	X	Unlisted	105
00270077	Single Pitch Award	MLTE	3	Unlisted	21
00255085	START Award in Creative Arts	OCNW	1	Unlisted	20
00255079	START Award in Personal Development	OCNW	1	Unlisted	30
00284058	STCW 95 Basic Training - Fire Prevention and Fire-Fighting	MCA	1	Unlisted	24
00284059	STCW 95 Basic Training - Personal Survival Techniques	MCA	1	Unlisted	9
00284065	STCW 95 Navigation, Radar & ARPA, Simulator - Operation	MCA	3	Unlisted	136
00284076	STCW 95 Training in Advanced Fire-Fighting	MCA	3	Unlisted	28
00270093	Take 5 for Play	SWCPET	E	Unlisted	15
00263312	Testing and Direct Purging of Low Pressure Commercial Pipe Work Not Exceeding IM3 in Volume; mbar Operating Pressure	BPEC	X	Unlisted	12
00271425	Text Production Skills	CG	X	Unlisted	30
00236657	Training for Classroom Assistants	NCFE	2	Unlisted	32
00268126	Visual Arts Programme	NOCN	1	Unlisted	30
00271429	Word Processing Techniques	CG	X	Unlisted	33

Annex C: SLN Values for Diplomas

16-18 and Adult Learner Responsive

1 The following tables give example SLN Values for the component parts of each of the new Diplomas to be introduced in 2008/09. The Diplomas will be funded at component level, however, the Personal Learning and Thinking Skills and the costs of collaboration are not accredited learning and will be funded via the Diploma learning aim code at programme weighting A (1.0).

2 In each example below, the minimum glh for the Additional and Specialist Learning is given as the SLN Value. The actual funding for this element will depend upon the programme of study and the elements studied.

Level 3 Advanced Diploma

Diploma component	SLN value (glh)	SLN
Principal Learning	540	1.200
Extended Project	120	0.267
Additional and Specialist Learning	360	0.800
Personal Learning and Thinking Skills	60	0.133
Costs of collaboration	54	0.120
Total	1134	2.520

Level 3 Progression Diploma

Diploma component	SLN value (glh)	SLN
Principal Learning	540	1.200
Extended Project	120	0.267
Personal Learning and Thinking Skills	60	0.133
Costs of collaboration	36	0.080
Total	756	1.680

Level 2 Higher Diploma

Diploma component	SLN value (glh)	SLN
Principal Learning	420	0.933
Project	60	0.133
Functional Skills - English	36	0.080

Functional Skills - Mathematics	36	0.080
Additional and Specialist Learning	180	0.400
Personal Learning and Thinking Skills	60	0.133
Costs of collaboration/work experience	40	0.089
Total	832	1.849

NB: This example assume the learner has already attained Functional Skills in ICT.

Level 1 Foundation Diploma

Diploma component	SLN value (glh)	SLN
Principal Learning	240	0.533
Project	60	0.133
Functional Skills - English	36	0.080
Functional Skills - ICT	36	0.080
Functional Skills - Mathematics	36	0.080
Additional and Specialist Learning	120	0.267
Personal Learning and Thinking Skills (PLTS)	60	0.133
Costs of collaboration	30	0.067
Total	618	1.373

Programme Weightings for the new Diplomas

The programme weightings for the new Diplomas will be applied to the Principal Learning. All other learning aims will be funded at their prevailing programme weighting. Projects will be funded at a programme weighting of A – 1.0 as they are not subject-specific.

Diploma line	Programme weighting (Level 1)	Programme weighting (Levels 2 & 3)
Construction and the Built Environment	1.3	1.3
Creative and Media	1.3	1.3
Engineering	1.3	1.3
Information Technology	1.12	1.3
Society, Health and Development	1.12	1.12

Annex D: Funding Rates for E2E

16-18 Model

SLN Values

1 The SLN Value for E2E in 2008/09 has been calculated to be as close as possible to the existing E2E rates. They are shown in the table below:

Activity	SLN Value
Weekly value	0.039
Enhanced Bonus	0.063
Basic Bonus	0.031

2 The weekly value is available for all weeks which the learner actually attends. This is defined as in learning at midnight on the Monday of the week. The weekly value includes the 16-18 entitlement, so E2E learners are not eligible for the additional SLN for the entitlement described in paragraphs [45 and 46].

3 Bonuses will be listed on the LAD or claimed through ILR codes so that they can be recorded properly in the ILR data. This means that the Training Providers Statement (TPS) will no longer be needed for E2E.

4 Progression bonuses – It is proposed that progression bonuses will be paid through claims on the ILR. Field A50 codes 20-26 would activate the bonuses.

5 Achievement bonuses – Bonuses for the achievement of qualifications will be claimed through entering codes on the ILR that are to be available on the Learning Aims Database (LAD).

6 A programme weighting of 1.3 will apply to E2E provision. This programme weighting includes the assumption that all learners will require Additional Learning Support. Therefore low level ALS funding (under £5,500) may not be claimed in addition to the E2E weekly funding.

E2E within the Provider Factor

7 The majority of the elements of the provider factor apply to E2E. However, the nature of E2E means that some elements of the provider factor do not apply in the same way as for other learners in the 16-18 model. These are set out below.

8 Success factor – positive progression does not currently influence the success factor, and achievement of qualifications on E2E will not contribute to the provider's success rate because they are not separately recorded. Therefore, qualification and positive progression bonuses continue. To avoid double counting of positive destinations, E2E provision will be ignored in the calculation of the success factor. If the provider only delivers E2E (or the majority of their provision is E2E), then an average will be used, resulting in a success factor of 0.87.

9 The short programme modifier does not apply to E2E, as the weekly SLN values have been set taking into account the length of the programme.

10 The other elements of the provider factor – area costs, programme weightings and disadvantage – apply to E2E as for other 16-18 learner responsive provision.

Annex E: Train to Gain Funding Values

Table E1: Train to Gain SLN Values, 2008/09

Programme	Higher rate	Lower rate
Full Level 2 or below	0.429	0.286
Full Level 3 or above	0.644	0.429
Skills for Life – Literacy and Numeracy*	0.180	
Skills for Life – ESOL*	0.180	

* Skills for Life in Train to Gain are weighted at K – 1.5

The programme-weighting factors for Train to Gain provision are set out in the table below:

Table E2: Programme-weighting factors.

Category	Employer-responsive model programme weighting
A	1
J	1.25
K	1.5

Examples showing how these figures are converted into funding for a range of Train to Gain programmes are shown on the funding policy page of the LSC website.

Annex F: Apprenticeship SLN Values and Programme Weightings

1 The definitive set of listed SLN Values for the Employer Responsive Model is available in the Learning Aims Database (LAD). The LAD contains SLN Values and Programme Weightings for all learning aims within Apprenticeships – Main Aims, Technical Certificates and Key Skills.

2 Listed below are the SLN Values and Programme Weightings assigned to the most common main learning aims in Apprenticeships. The SLN Values stated below carry the funding associated with the NVQ/main aim as well as the Apprenticeship Element.

Code	Framework	Most Likely NVQ3 SLN*	Most Likely NVQ3 PWF*	Most Likely NVQ2 SLN*	Most Likely NVQ2 PWF*
201	Accountancy	1.497	A	1.477	A
231	Active Leisure and Learning	1.216	A	1.095	A
258	Advice and Guidance	1.518	J	0.852	J
101	Agricultural Crops and Livestock	1.518	J	1.151	J
219	Amenity Horticulture	1.18	J	1.182	J
262	Animal Care	1.542	J	1.166	J
210	Apparel	2.35	K	0.624	K
326	Arboriculture	1.647	J	n/a	n/a
203	Arts and Entertainment, Cultural Heritage, Information and Library Services	1.598	J	n/a	n/a
202	Aviation	1.179	K	0.978	K
305	Barbering	1.707	J	1.531	J
279	Beauty Therapy	1.739	J	1.321	J
282	Building Services Engineering Technicians	2.262	K	n/a	n/a
102	Business Administration	1.091	A	0.968	A
228	Carry and Deliver Goods	n/a	n/a	0.979	K
208	Ceramics	2.346	K	n/a	n/a
104	Children's Care Learning and Development	1.214	J	0.919	J
256	Coatings Development Plan	2.659	K	0.673	K
308	Coca Cola	3.817	A	n/a	n/a
232	Communications Technologies (Telecoms)	2.211	K	1.278	K
290	Community Justice	1.438	J	n/a	n/a
116	Construction	0.986	K	1.064	K
293	Contact Centres	1.029	K	0.749	K
250	Cultural Heritage	1.937	A	1.105	A
263	Customer Service	1.432	A	1.069	A

Code	Framework	Most Likely NVQ3 SLN*	Most Likely NVQ3 PWF*	Most Likely NVQ2 SLN*	Most Likely NVQ2 PWF*
315	Dental Nursing	1.456	J	0.9	J
321	Design	2.299	J	0.932	J
295	Driving Goods Vehicles	0.804	K	1.252	K
314	Dry Stone Walling	n/a	n/a	1.132	J
294	Electrical & Electronic Servicing	2.607	K	1.271	K
211	Electricity Industry	2.262	K	1.291	K
105	Electrotechnical	2.166	K	1.043	K
214	Emergency Fire Service Operations	1.492	J	n/a	n/a
106	Engineering	2.257	K	1.333	K
107	Engineering Construction	2.686	K	1.155	K
243	Environmental Conservation	1.605	J	1.198	J
247	Equine Industry	1.554	J	1.119	J
289	Events	1.897	A	1.168	A
299	Farriery	2.26	J	n/a	n/a
284	Fencing	n/a	n/a	1.043	K
244	Floristry	1.534	J	1.166	J
215	Furniture Industry	0.593	K	1.139	K
316	Game and Wildlife Management	1.647	J	1.166	J
265	Gas Industry	2.454	K	1.146	K
217	Hairdressing	1.615	J	1.631	J
236	Health and Social Care	1.173	J	0.928	J
212	Heating, Ventilation, Air Conditioning and Refrigeration	1.077	K	0.98	K
220	Hospitality and Catering	2.189	A	1.511	A
221	Housing	1.348	J	0.901	J
283	Industrial Applications	n/a	n/a	0.67	K
272	Information and Library Services	1.535	J	0.932	J
248	Insurance	2.429	A	1.312	A
259	International Trade and Services	n/a	n/a	1.312	A
292	IT Services and Development	1.51	K	1.338	K
322	IT User	1.404	A	1.397	A
307	Joint Services	2.518	K	n/a	n/a
288	Laboratory Technicians (Generic)	2.499	K	1.112	K
254	Land-based Service Engineering	2.481	K	1.181	K
301	Learning and Development (Direct Training & Support)	2.404	A	n/a	n/a
260	Management	1.833	A	1.123	A
234	Marine Industry	2.437	K	1.155	K
113	Metals Industry	2.128	K	0.681	K
122	Nail Services	1.832	J	1.499	J

Code	Framework	Most Likely NVQ3 SLN*	Most Likely NVQ3 PWF*	Most Likely NVQ2 SLN*	Most Likely NVQ2 PWF*
318	Nail Services	n/a	n/a	1.499	J
298	Oil & Gas Extraction	n/a	n/a	1.535	K
286	Optical	n/a	n/a	0.956	A
306	Optical Advisor	1.405	J	0.867	J
296	Payroll	1.918	A	1.443	A
287	Pharmacy Technicians	1.136	J	0.9	J
251	Photo Imaging	2.417	J	1.014	J
117	Plumbing	1.815	K	0.83	K
111	Polymer Processing and Signmaking	2.128	K	0.681	K
297	Ports Industry	n/a	n/a	1.322	K
227	Print and Printed Packaging	2.358	K	0.56	K
103	Process Technology	2.262	K	1.291	K
281	Procurement	1.831	A	1.165	A
303	Production Horticulture	1.566	J	1.198	J
213	Property Services	1.435	J	0.9	J
313	Public Services	n/a	n/a	0.868	J
278	Rail Transport Engineering	2.475	K	1.291	K
300	Rail Transport Operations	n/a	n/a	1.296	K
112	Retail	1.357	A	1.075	A
310	Road Passenger Transport - Bus and Coach	n/a	n/a	1.296	K
329	Roadside Assistance and Recovery	0.6	K	1.139	K
309	Saddlery	2.333	K	0.469	K
304	Sales and Telesales	2.011	A	1.104	A
229	Sea Fishing	2.705	K	1.322	K
230	Security Industry	2.533	K	0.77	J
280	Signmaking	2.399	K	n/a	n/a
312	Sporting Excellence	1.875	A	n/a	n/a
323	Storage and Warehousing	1.791	A	1.032	A
319	Support Services in Healthcare	n/a	n/a	0.9	J
311	Teaching Assistants	1.884	A	1.072	A
276	Textiles	2.354	K	0.681	K
324	Traffic Office	1.726	A	1.125	A
206	Transport Engineering and Maintenance	2.171	K	1.022	K
115	Travel and Tourism Services Leisure and Business	1.842	A	1.114	A
233	Trees & Timber	n/a	n/a	1.102	J
330	Vehicle Body and Paint Operations	0.942	K	1.087	K
327	Vehicle Fitting	0.6	K	1.139	K
328	Vehicle Maintenance and Repair	0.78	K	1.139	K

Code	Framework	Most Likely NVQ3 SLN*	Most Likely NVQ3 PWF*	Most Likely NVQ2 SLN*	Most Likely NVQ2 PWF*
331	Vehicle Parts Operations	0.931	K	0.959	K
332	Vehicle Sales	1.742	A	1.023	A
317	Veterinary Nursing	1.48	J	0.999	J
277	Water Industry	2.203	K	0.559	K
267	Wholesale, Distribution, Warehousing and Storage	1.711	A	1.012	A

* Some Apprenticeship Frameworks do not have NVQs as Main Aims, for these Frameworks the table above shows the most likely SLN Value and Programme Weighting Factor for the most common Main Aim.

Annex G: Rates Methodology

16-18 and Adult Learner Responsive models

1 The method applied since 2003/04 will essentially be replicated, although funding values will be listed in Standard Learner Numbers (SLN), expressed in terms of guided learning hours (glh) rather than pounds and pence. Learning aims will either be listed (have a standard listed SLN Value) or unlisted (the SLN Value will be taken from providers' planned glh recorded the ILR). In exceptional cases that require prior written LSC approval, learning aims may be funded via field A52 of the ILR (distance learning funding) which will be converted into a glh value. SLN will then be calculated using the methodology described in the document *Funding Formula*.

Listed SLN Values

2 The listed SLN Values table for 2008/09 is published in Annex A of this document. It includes the SLN Values for certain qualification types, such as GCE A-levels and GCSEs.

3 Many other learning aims have listed SLN Values. Listed SLN Values are available in the Learning Aims Database (LAD).

Unlisted qualification types

4 Certain qualification types will not be given a listed SLN Value particularly where they are delivered in a diverse number of glh. In 2008/09, this includes certain Skills for Life learning aims and the Wider Key Skills qualifications.

QCA recommended glh

5 A new learning aim that does not fall into one of the categories above will generally be assigned an SLN Value on the basis of the glh recommended by the awarding body as listed on the National Database of Accredited Qualifications (NDAQ).

6 However, the LSC may decide not to assign an SLN Value on this basis if there are concerns about the robustness of the recommended glh.

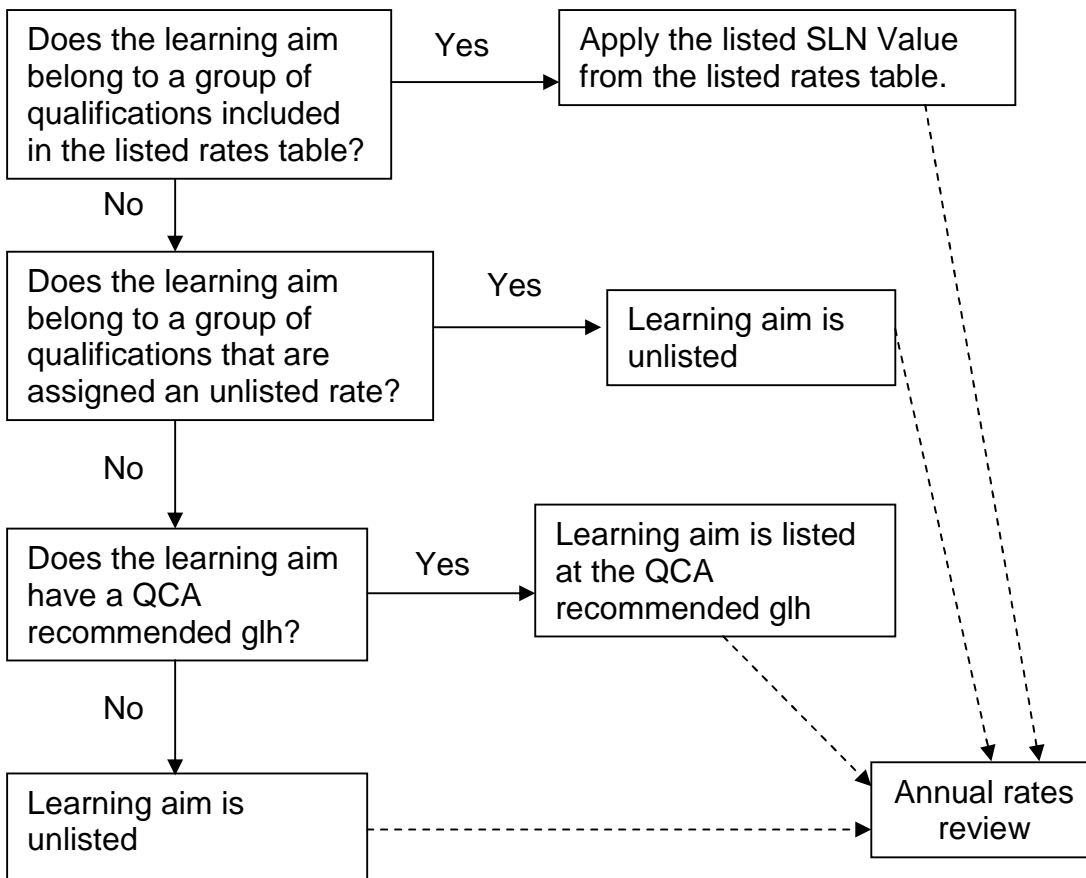
All other learning aims

7 All learning aims not falling into the categories above will be unlisted in the first instance. In the main, these will be learning aims that are not accredited by QCA.

Annual rates review

8 Every autumn, the previous year's ILR data will be reviewed with changes made to the following year's SLN Values for certain individual learning aims. The rate changes for 2008/09 are included in annex B.

Summary of the general process for assigning SLN Values for new learning aims



Employer Responsive model

9 The 'activity costs' method applied since 2006/07 will essentially be replicated, although funding values will be listed in Standard Learner Numbers (SLN) rather than pounds and pence. All learning aims in the Employer Responsive Model are listed (have a standard listed SLN Value).

Listed SLN Values

10 The listed SLN Values tables for 2008/09 are published in this document (in Annex E for Train to Gain and in Annex F for Apprenticeships). They include the SLN Values for all Train to Gain, and for the most popular main learning aims within Apprenticeships for the most popular Frameworks.

11 The definitive set of listed SLN Values for the Employer Responsive Model is available in the Learning Aims Database (LAD).

Annex H: Area-costs Uplift by Region

Table H1: Area-costs uplift by region.

London A 1.20	London B 1.12
Camden	Barking and Dagenham
Greenwich	Bexley
Islington	Havering
Kensington and Chelsea	Redbridge
Lambeth	Barnet
Southwark	Enfield
Westminster	Waltham Forest
Wandsworth	Bromley
Hackney	Croydon
Tower Hamlets	Kingston upon Thames
Lewisham	Merton
Newham	Richmond upon Thames
Haringey	Sutton
Hammersmith	Brent
Fulham	Ealing
	Harrow
	Hillingdon
	Hounslow

Bedfordshire and Hertfordshire Non-fringe 1.03	
Bedfordshire County Council	North Hertfordshire
Bedford	South Bedfordshire
Luton	Stevenage
Mid-Bedfordshire	
Berkshire, Surrey and West Sussex Fringe 1.12	
Surrey County Council	Runnymede
Bracknell Forest	Slough
Crawley	Spelthorne
Elmbridge	Surrey Heath
Epsom and Ewell	Tandridge
Guildford	Waverley
Mole Valley	Windsor and Maidenhead
Reigate and Banstead	Woking
Berkshire Non-fringe 1.12	
Reading	Wokingham
West Berkshire	
Buckinghamshire Non-fringe 1.07	
Aylesbury Vale	Milton Keynes
Wycombe	
Hampshire and Isle of Wight 1.02	
Basingstoke and Deane	Isle of Wight
East Hampshire	New Forest
Eastleigh	Portsmouth
Fareham	Rushmoor

Hampshire and Isle of Wight 1.02 (continued)	
Gosport	Southampton
Hampshire County Council	Test Valley
Hart	Winchester
Havant	
Hertfordshire and Buckinghamshire Fringe 1.10	
Broxbourne	South Buckinghamshire
Chiltern	St Albans
Dacorum	Three Rivers
East Hertfordshire	Watford
Hertsmere	Welwyn Hatfield
Kent and Essex Fringe 1.06	
Basildon	Harlow
Brentwood	Sevenoaks
Dartford	Thurrock
Epping Forest	
Oxfordshire 1.07	
Oxfordshire County Council	West Oxfordshire
Cherwell	Oxford
South Oxfordshire	Vale of White Horse
West Sussex Non-fringe 1.01	
Adur	Arun
Chichester	Horsham
Mid-Sussex	Worthing

December 2007

Published by the Learning and Skills Council

Extracts from this publication may be reproduced for non-commercial educational or training purposes on condition that the source is acknowledged and the findings are not misrepresented.

This publication is available in electronic form on the Learning and Skills Council website:
www.lsc.gov.uk

If you require this publication in an alternative format or language, please contact the LSC Help Desk: 0870 900 6800

Publication reference: LSC-P-NAT-080078DV3