

Release Guide

Patch update to Learner Information Suite 16.02



December 2008

Introduction

A "patch" to the version 16.02 of the Learner Information Suite (LIS) is being released to add some extra functionality to the LIS.

This document highlights the new features and functionality in the patch to Learner Information Suite (LIS) version 16.02. It does not document the whole system.

Installation Instructions

Before you start

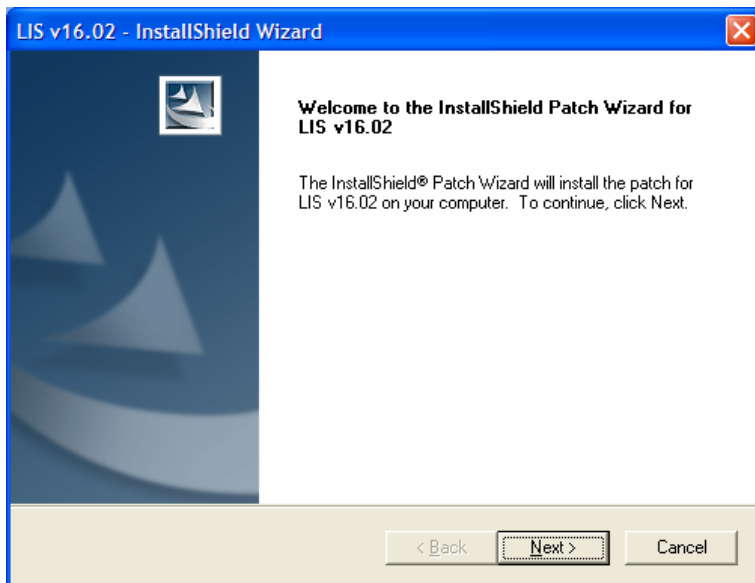
Please note the following

- you must be logged on with Administrator rights before attempting to install the patch.
- this patch is only intended for installation on computers which already have LIS version 16.02 installed. Please make sure this version of LIS is installed before attempting to install the patch.
- installing this patch will overwrite any data currently held in the LIS
- this patch does not use the latest version of the Providers table. You are advised to update this after installing the patch.

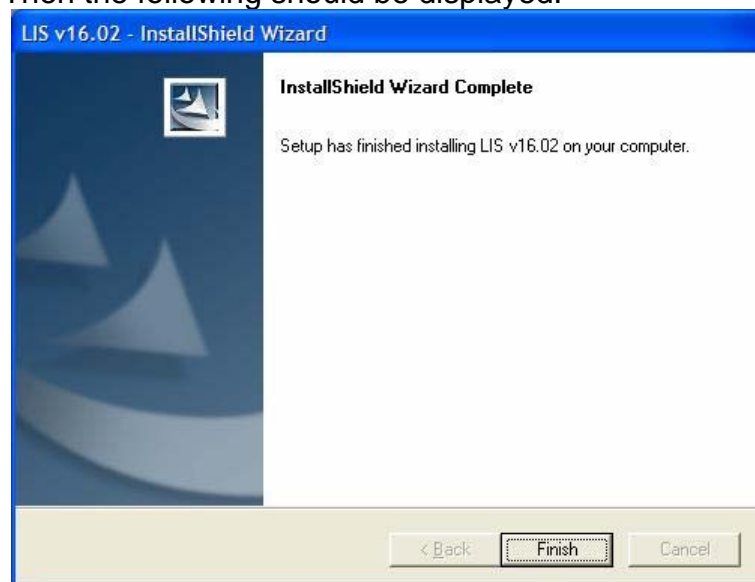
Installing the patch

To install the patch:

- Download the file nat-lissoftware-sw-lis1602_501Patch.zip.
- This contains a single file called "Update.exe" - extract this to a convenient location on your PC.
- Click on Update.exe. This will run an InstallShield program and the following should be displayed:



- Click on Next.
- A progress bar displays as the installation takes place.
- Then the following should be displayed:



- Click on Finish to exit the installer.

New Reports in the 16.02 patch

ILR Actuals by SSoA (Summary Statement of Activity) Category (Learner Responsive)

This report shows a summary of learner responsive data, corresponding to the categories used in the Summary Statements of Activity produced during the funding allocation process.

LR Funding Claim Report

This report summarises Learner Responsive data using categories from the Funding Claim Report described in the "LSC Funding Guidance 2008/09: ILR Funding Claims and Audit Returns" guidance.

Note that this report selects data for part of the year, based on the ILR Collection. If the source ILR file is for collection F01, the report will show data from August to the end of October. For an F02 file, the report shows data from August to the end of January, and an F03 file, data from August to the end of April. Reports for F04 and F05 files will include data for the whole year. This means that this report may show different totals to the other reports (which do not select data on this basis).

LR Funding Included and Excluded by ILR Export

The LIS will calculate Learner Responsive funding for ILR data which is not fully valid, as long as the minimum set of "Funding" validation rules are satisfied. The ILR Export function will only export fully valid ILR data. This means that the ILR Export can exclude some learners which were partially valid and generated funding.

This report shows how much funding is included and excluded by the ILR Export process.

Age Categories in Reports

There are two ways in which reports categorise the age of Learner Responsive provision. Some reports use age based on the ILR Funding Stream field, field A10. Other reports use the age of the learner as at 31 August of the current teaching year.

The differences between these categorisations will come from learners who are Adult (19+) in terms of age, but are still continuing a programme they started when they were aged 18 or under. Such learners are funded using 16-18 funding rates, but the funding comes from the Adult funding budget. Also, Entry to Employment (E2E) learners are always funded from the 16-18 Funding Stream, even if they are 19 or over.

The following reports use the Funding Stream (derived from ILR Field A10) to categorise provision:

- Summary of Learner Responsive Funding
- LR Funding Included and Excluded by ILR Export

The following reports use the age of the learner on 31 August to categorise provision:

- Funding Claim Report
- ILR Actuals by SSoA Category

In addition, the Funding Claim report and SSoA report both have additional sections showing adult learners who are funded from the 16-18 funding stream.

Other Changes to Functionality

Validation Rule Changes

The following validation rules have been corrected in the patch. Previously, they were not reporting errors for some learners or aims that should have been rejected:

- A04_A09_A10_A18_A32_LAD_1
- A04_A09_A10_A18_A32_LAD_2
- A09_A10_LAD_7

Please note that the first two rules have not yet been implemented in the Data Collection portal. This change is planned for a later release of the portal software for 2008/09. The implication is that the portal and LIS will give different answers for some ILR files until this change is made, but by including these changes in this release of LIS, providers should have more opportunity to correct errors in their data.

Filter on Indicative Occupancy List export report

In LIS 16.02, the Indicative Occupancy List export report was filtered by period, but the user could not change the filter for this report. This has been fixed in this patch.

Calculation Errors for A20 and A18

In some circumstances, LIS version 16.02 would generate funding calculation errors if fields A18 or A20 were set to zero. This has been fixed in this patch.

Known Issues with this patch

Funding Claim report prints in Portrait format in certain circumstances

If the Funding Claim report is included as a report to be printed in a Batch Import process, it prints as Portrait rather than Landscape. If the report is exported to PDF format, or printed from Report Manager, it appears correctly.

Providers table is not the latest version

The table of Providers included in the patch is not the latest version. Users are advised to update the LIS again to the latest Provider Data update from the LIS 16.02 web page.

Download and support

Learner Information Suite version 16.02 is available to download from the Data area of the Providers section of the LSC website:

<http://www.lsc.gov.uk/providers/Data/Software/LIS/LIS16-02.htm>

For further advice please seek support from your Partnership Adviser.