

Overview

Train to Gain Funding in LIS 14



Leading learning and skills

Introduction

The Learner Information Suite (LIS) series 14 includes the funding calculation for Train to Gain (TtG) and the TtG Funding Summary report. These notes are intended to briefly explain how the calculation works and explain the figures shown on the report. More detailed documentation is available from the LIS pages of the LSC website.

Train to Gain funding calculation

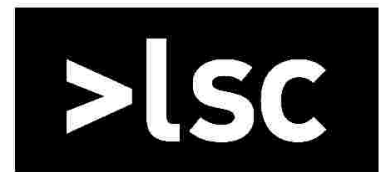
This section should be used to:	Understand the Train to Gain funding calculation in LIS 14.
It applies to:	FE and WBL ILR collections with Train to Gain learners.

1	<p>To run the LIS 14 TtG funding calculation, refer to the LIS14 user guide or quick start. Note that the derived variables calculation needs to be run before TtG funding can be calculated.</p> <p>The funding calculation is described in detail in the document Business Rules for Train to Gain Funding Module 2006/07.</p>
2	<p>Learners may be eligible for TtG funding if they:</p> <ul style="list-style-type: none"> are adult (aged 19 years old or more when the learning starts) do not already have a full level 2 qualification are undertaking a full level 2 or full level 3 or a Skills for Life aim (as indicated by the LAD) start the aim on or after 1 August 2006 (ILR field A27).
3	<p>Where Train to Gain funding is to be claimed for an aim, it should be flagged in the ILR by setting field A10=60. ILR field A18 should be set to 22 or 23, as described in the ILR 2006/07 specification and manuals.</p> <p>Note: Train to Gain 'badged' aims (A10=60 and A46=63) do not have funding calculated by the Train to Gain funding calculation method. They are funded from mainstream funds as per the usual funding calculations. They are out of the scope of this document.</p>
4	<p>For FE, where an aim is flagged as eligible for achievement funding (A39=1) an actual end date (A31) must be entered. For WBL, where an aim is flagged as having been achieved (A35=1) an achievement date (A40) must be entered.</p>
5	<p>The LIS 14 TtG funding calculation will be performed on those ILR records which have not failed the funding rule subset of the validation rules. Note: They might not necessarily have <i>passed</i> all the rules because some rules may not be applicable, for example an FE rule with a WBL file.</p> <p>In particular LIS 14 validation will check that the aim appears in the LAD with a valid TtG status, and is therefore fundable through TtG, and that the ILR fields mentioned above have been populated appropriately.</p> <p>See the validation rules spreadsheet and guidance for further details.</p>
6	<p>The LIS 14 TtG funding calculation works as shown in the flowchart below. Additional explanation is given here:</p> <p>Step 3: The TtG base rates in the LAD are unweighted. They are multiplied by a TtG programme weighting factor during the funding calculation. The weighting factor code is shown in the LAD (currently A=1.0, B=1.25 and C=1.5). There may be two base rates; the first will be used for skills for life aims and for non skills for life aims where A18=22 in the ILR, the second will be used for non skills for life aims where A18=23.</p> <p>Step 4: The area cost factor defaults to 1 unless there is a Provider Train to Gain area cost factor in the LIS Provider table for the given combination of provider and LSC (L01 and L25). For FE the LSC 000 will be used to look up a value.</p> <p>Step 5 and 6: For example, period 1 is 1 August to 31 August, period 12 is 1 July to 31 July, academic year 2006/07 is August 2006 to July 2007.</p>
7	<p>Additional learner support funding is not part of the TtG funding calculation, and is provided as per the usual arrangements with the agreement of the local LSC.</p>

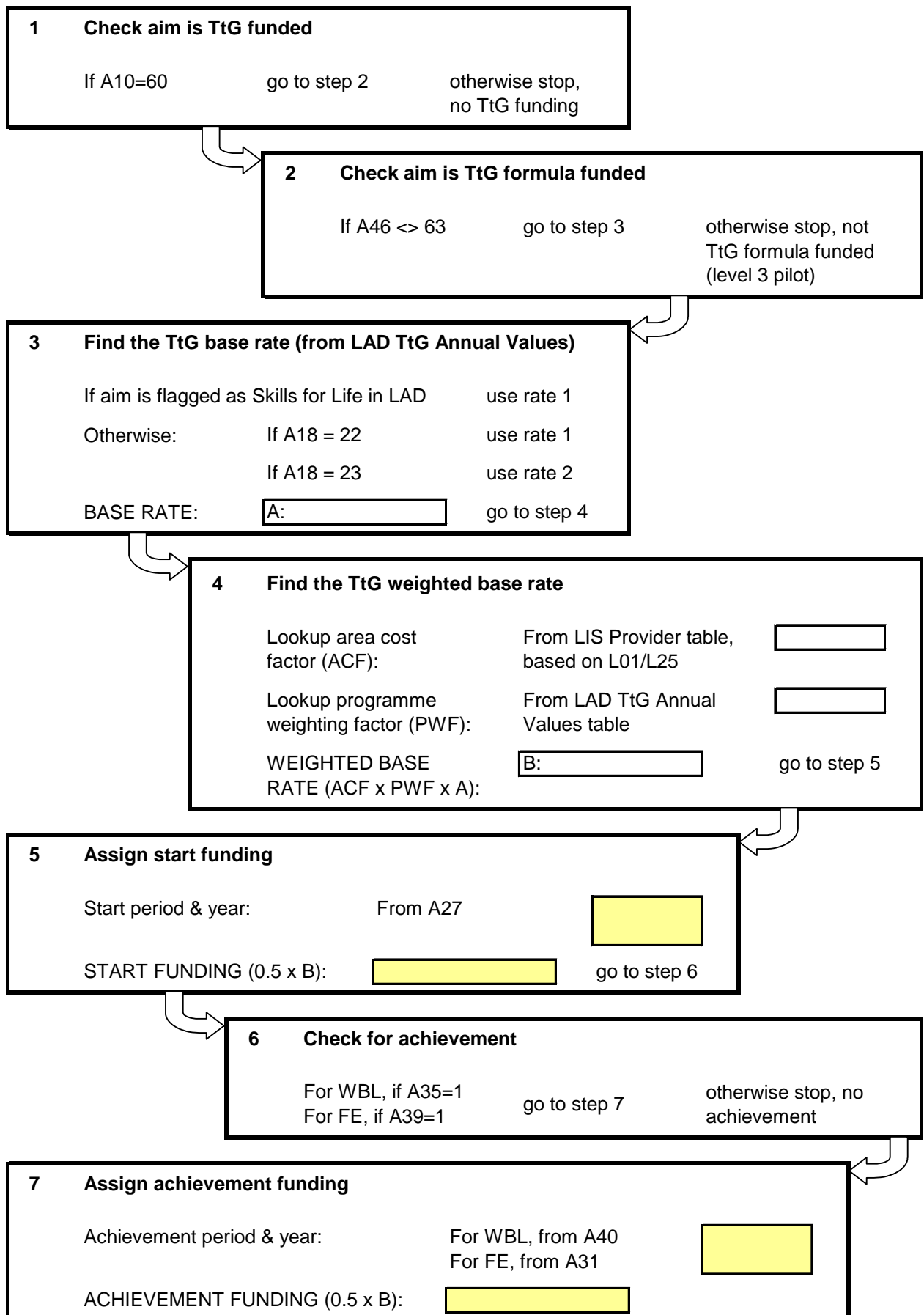
Continued

Overview

Train to Gain Funding in LIS 14



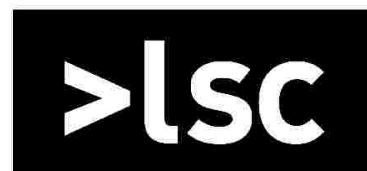
Leading learning and skills



Continued

Overview

Train to Gain Funding in LIS 14



Leading learning and skills

Train to Gain funding summary report

This section should be used to:	Understand the TtG Funding Summary report in LIS 14.
It applies to:	FE and WBL ILR collections with Train to Gain learners.

1	To run the TtG Funding Summary report, refer to the LIS user guide or quick start document . Note: For WBL, use a type A ILR file (year to date) to ensure that funding is shown for all TtG learners and not just those with changes this period.
2	The TtG Funding Summary report shows the number and funding value of Train to Gain starts and achievements within a single period and for the year to date (academic year up to and including the selected period). The figures are displayed for Skills for Life aims, for Full level 2 aims by Sector Subject Area, and totals. The report is described in detail in the document LIS Database, Derived Variables and Report guidance .
3	A period can be selected when the report is run from the Report Manager screen in LIS. Otherwise, for FE the default period is based on the file preparation date in the imported ILR data file. For WBL the default period is the period of the return, for example it would be 1 for a W01 return.
4	If the derived variable and/or TtG funding calculations have not been run a warning is displayed in the report header.
5	For the 'group by LSC' report there will be a separate page for each value of L25. The area cost factor shown in the header will relate to the LSC for that page.

Further information

Train to Gain	Train to Gain website – available at www.traintogain.gov.uk
LAD	Learning Aim Database – available at providers.lsc.gov.uk/lad
ILR 2006/07 Specification	Specification of the Individualised Learner Record Batch Data Capture File for 2006/07 – available from www.lsc.gov.uk/National/Partners/Data/DataCollection/ILR/ILRSpecification/ILRSpec200607
Validation rules	Validation rules (as used in LIS 14) spreadsheet and guidance – available from www.lsc.gov.uk/National/Partners/Data/DataCollection/ILR/ILR0607
LIS 14 user documentation	LIS 14 User Guide, Quick Start and technical documentation – available from www.lsc.gov.uk/National/Partners/Data/ProviderSoftware/LIS/2006-07