



Leading learning and skills

Carlisle Local Area
Analysis of 14-19 Education & Training
Provision

Date

Presented to
By

Welcome

Produced by NW LSC Data & Research Teams

Notes



- Please use this analysis alongside the accompanying data set
- Volumes of Learners, cohort etc are based on Residency unless stated
- Please see the speakers notes for benchmarks with Regional & National statistics where possible
- National data sets have been used where appropriate to ensure consistency – these can be complemented with local data where necessary

Produced by NW LSC Data & Research Teams

Contents



Key issues & priorities

- Policy Context
- Facts & Figures
- Cohort Activity
- Learner Analysis by Route
- Learners with Learning Difficulties & / or Disabilities
- Attainment by Age 19

Produced by NW LSC Data & Research Teams

Key Issues & Priorities



Leading learning and skills

01

Produced by NW LSC Data & Research Teams

Issues & Priorities



Produced by NW LSC Data & Research Teams

Policy Context



Leading learning and skills

02

Produced by NW LSC Data & Research Teams

14-19 Reform

Next Steps



'Our starting point is the concept of a 14-19 entitlement for all young people to the right learning opportunities, & the right support'

- A high quality learning route for every young person that enables them to participate, achieve & progress
- The support to integrate all services for young people so that they can make the most of their opportunities & choices
- Stronger local partnerships & consortia arrangements
- Establishing the right delivery arrangements at a local, regional & national level.

Produced by NW LSC Data & Research Teams

Delivering 14-19 Reform: Next Steps was published in October 2008. In delivering the 14-19 entitlement, the document lays out four priorities:

- A high quality learning route:
- Skills that everyone needs & values
- A clear, streamlined system with choices that all lead to progression
- Personalised teaching & learning on every route
- The right support:
- IAG – having the right support to choose
- Knowing what is on offer
- Support to learn
- Additional personal support
- Strengthening local partnerships:
- Developing the workforce
- Student voice
- Importance of employers & HE as local partners
- The role of 14-19 partnerships
- The right delivery arrangements:
- Local authorities as strategic leaders of 14-19 reform
- Sub regional groupings & the YPLA

From here to entitlement is a self-assessment toolkit for 14-19 partnerships. The toolkit aims to describe what a good 14-19 partnership looks like, to point colleagues in the direction of useful resources & to provide a basis for future action.

14-19 Reform



•Raising the Participation Age

Raising the participation age challenges all of us responsible for young people's futures to raise our game.'

•Learning Routes

'Every young person should have the opportunity to engage in learning that will enable them to participate, achieve & progress'

– Apprenticeships, Diplomas, Foundation Learning Tier, General qualifications

• Impartial Advice & Guidance

'Critical to making the right choices is high quality & impartial IAG'

- September Guarantee
- 14-19 Online Prospectuses
- Common Application Processes

Produced by NW LSC Data & Research Teams

Raising the Participation Age

The Education & Skills Act sets out plans to raise the education participation age to 17 by 2013 & 18 by 2015. Currently, 77% of NW 17 year olds participate in full-time & part-time education & WBL. (DCSF 2006 Participation in education & work based learning (WBL) of 16 & 17 year olds)

Learning Routes

Promoting achievement, valuing success: a strategy for 14-19 qualifications sets out a streamlined set of qualifications that young people, parents, employers & HE recognise & value:

Apprenticeships: an entitlement to a place by 2013 for all 16 year olds suitably qualified

- The Government anticipates that around one in five of all young people will be undertaking an Apprenticeship by 2020 before the academic year in which they turn 18 – *currently 1 in 10 in the NW* (DCSF 2006 Participation in education & WBL of 16 & 17 year olds)

Diplomas: need to ensure sufficient supply through a phased build up to meet the national entitlement in 2013 for all 14-16 year olds to the first 14 Diplomas; & for 16-18 year olds to all 17 Diplomas

FLT: introduced to provide accredited qualifications for young people working at entry level & level 1 to prepare them fully for level 2:

General qualifications – GCSEs, A levels

Young People will be able to choose from any of the 4 routes. There will also be opportunities for personalised learning that will enable young people to progress into one of these 4 routes

IAG

September Guarantee in 2007 = 91.5% in NW, increased to 94.7% in 2008 with extension to 17yo at 76.9%.

Action Plan for the 14-19 Prospectus & Common Application Process published April 2009 sets out the ambition to 2013 for the further development of the 14-19 Prospectus & implementation of the Common Application Process.

LSC Business Cycle and Strategic Analysis



Background & Introduction

- LSC Business Cycle Overview
- The Role of Strategic Analysis
- Issues for commissioning & progress in addressing priorities

Produced by NW LSC Data & Research Teams

What does the Cycle do?

- Acts to translate national, regional & local priorities, into funding & places to meet needs
- Relies on complex national, regional local interactions & dependencies internally to the LSC & externally with delivery partners
- Process is processional but iterative

What are the key roles & responsibilities?

- National: determines priorities, budget lines, funding policy
- Regional: produces strategic analysis, commissioning priorities, models & moderates budgets & provider allocations, procures through OCT
- Local: Reviews provider performance, identifies needs, demands & gaps, commissions through negotiation, identifies gaps for OCT & agrees allocations

Issues & Challenges

- Timescales are derived & driven nationally
- In year performance picture is partial e.g. MLP
- Lack of full year picture of delivery e.g. participation & achievements
- Matching & defining need & actual delivery
- Iterations from indicative to final allocations
- Communication within multiple layers & relationships

Facts & Figures



Leading learning and skills

03

Produced by NW LSC Data & Research Teams

Overview of Carlisle



- Population Aged 16-59/64 is 63,415
- Age 16-18 is 6.6% of the Working Age population
- 10,400 Working Age are economically inactive
- 81.9% are employed
- 76% of 19-59/64 are qualified to Level 2 & above.
- Largest Sectors of Employment are Wholesale & Retail & Health & Social Work.

Produced by NW LSC Data & Research Teams

Data Source

- ONS mid-year population estimates 2007
- Census 2001
- Annual Population Survey July 2007 to June 2008
- Annual Business Inquiry 2007

Why This information Has been Used

- To provide an overview, setting the 14-19 education & training information in the local area context.

Data Analysis

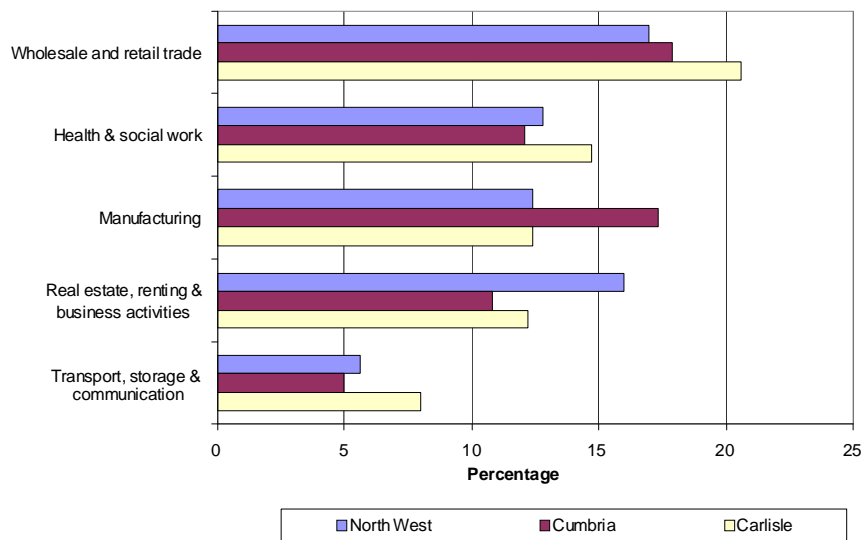
- Note the differences on this slide in the definition of working age – this is due to PSA / LAA targets
- 16-18 Population is proportionally is **slightly lower** than the regional average
- 16.4% are economically inactive, this is **lower** than the regional rate
- **76%** qualified to Level 2 or above is **8.3% points above** the regional rate
- High Employment in **Wholesale & Retail is above** the regional picture

Points to Consider

Are working age qualifications attainment levels reflected in success rates of the young people resident in the area?

Is training provision, within the demand led context, aligned to local industry sectors that employ the most people?

Top 5 Sectors of Employment Carlisle



Source: ABI Employee Analysis, ONS Crown Copyright Reserved

Produced by NW LSC Data & Research Teams

Data Source

Annual Business Inquiry (ABI) 2007; Employee Volumes expressed as a % of area total.

Why This Information has been Used

This data, alongside other employment information, can build a picture of the alignment of education & training provision in a demand led system

Data Analysis

- Highest employment volumes in Carlisle: **Wholesale & Retail Trade** (**11,200** employed), **20.6%** of area total. **Above** Cumbria (17.9%), & the North West (17%) proportions.
- Second highest: **Health & Social Work** **11,200** employed), 14.7% of area total. **Above** Cumbria (12.1%) & North West (12.8%). **Lower** than **Cumbria (17.3%), Manufacturing in Carlisle= 12.4% (6,800)**
- Highest volume increase in employment between 2006 & 2007: **Real Estate, Renting & Business Activities** **+500** jobs (to **6,700** in 2007,) 8.1 per cent rise.
- Largest volume decrease in : **Other Community** **-500** to **2,300** in 2007 (**-17.9%**). **Construction**: **-400** jobs to **2,700** in 2007 (**-12.9%**).

Points to Consider

- The full impact of the recession is yet to be seen.
- What are the implications for education & training provision planning of the reduction in employment in the **Other community & Construction sectors.**
- How aligned to this picture of employment is current education & training provision in the area? – is there a difference in the alignment of FE & WBL?

Local Data

- Local employment data & intelligence, will help to inform the information shown here
- Up to date redundancy data could complement the sectoral employment information in the slide

Young Apprenticeships & Key Stage 4 Engagement Programme



Young Apprenticeships

174 contracted traditional YA places in Cohort 5, across 6 sectors.

137 commissioned places for Cohort 6 across 5 sectors.

Key Stage 4 Engagement Programme

320 places contracted in Phase 3 (2008/09) with a slight decrease to 297 places commissioned in Phase 4 (2009/10).

Produced by NW LSC Data & Research Teams

Cumbria: Young Apprenticeships

Data Source

- The data is taken from the Young Apprenticeship contracts & learner returns which are submitted to the LSC as per the contractual agreement.

Why this information has been used

- Young Apprenticeship Programme is a distinctive offer to those who would benefit from an occupationally specific & work-based learning route leading to a level 2 qualification by 16, the programme is aimed at able students. Young Apprenticeships (YA) were introduced as a pilot scheme in 2004, & the fifth cohort of the programme saw the introduction of Young Apprenticeships with Diplomas, incorporating components from the diploma within the YA qualification.
- Year on year there has been demand for growth, however this has been limited by budget constraints, with demand often exceeding the amount which we can contract for. In cohort 6 the allocation of volumes is based on the 14-16 population size, this was previously provider based. The LSC is currently working with Local Authorities to contract for the sixth cohort of learners.

Data Analysis

- In Cohort 6 Cumbria has commissioned places in the following sectors: Construction (13), Engineering (41), Motor Vehicle (26), Performing Arts (26) & Sports Leadership (31).

Key Stage 4 Programme

Data Source

- The data is taken from the Key Stage 4 contracts & data returns which are submitted to the LSC on a termly basis.

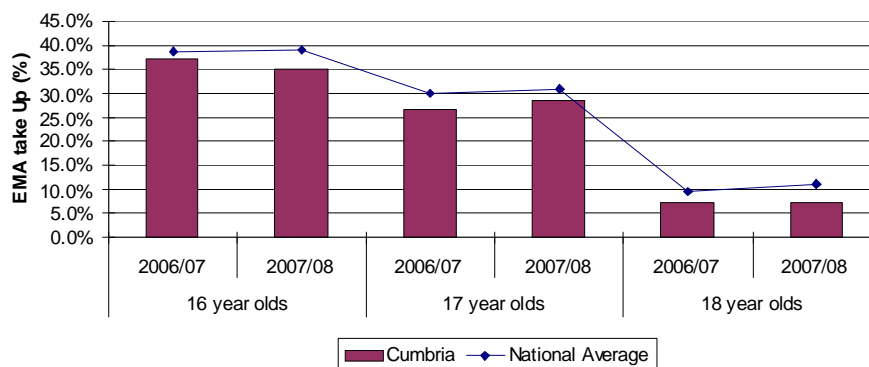
Why this information has been used

- Key Stage 4 Engagement Programme is aimed at maximising participation & achievement of young people who show a lack of interest in education, & who would be motivated by a strong work focused route & a different learning environment. The North West has been running pilots since 2006 & are currently in the process of awarding a fourth year of funding for 2009 start, which is being offered in all Local Authorities.

Cumbria EMA Take-up



EMA take up in 2006/07 and 2007/08 by Age



Source: DCSF website

Produced by NW LSC Data & Research Teams

Education Maintenance Allowance (EMA)

Data Source

The Source of data used is the Learner Support Management Information, this data is Local Authority & Sub National EMA take up in 2008 based on the 16-18 population size (historically based on estimated eligibility of population). This is the latest available data at the time of writing.

Why this information has been used

EMA supports learners from low income household to continue in learning & is an important tool in increasing post-compulsory education, as well as decreasing the number of young people not in education, employment or training (NEET).

Data Analysis

- In 2008 4,697 young people took up EMA, growth of 0.7% from the previous year, increasing at a slower rate than regionally (+4.6%).
- The EMA policy team promote early take up in order to demonstrate positive behaviour associated with receipt of EMA. Early take up is above the regional average, at 60.2% by the end of September.
- 35% of 16 year olds have taken up EMA, below the regional average (44%)
- 28% of 17 year olds have taken up EMA, below the regional average (36%)
- 7% of 18 year olds have taken up EMA, below the regional average (12%), & is the lowest proportionate take up in the North West.

Diplomas



Carlisle Partnership	2008/09	2009/10	2010/11	2011/12 if conditions met
Construction & the Built Environment		Conditions Met		
Creative & Media		Approved		
Engineering		Approved		
Information Technology			Approved	
Society, Health & Development			Conditions Met	
Business Administration & Finance			Approved	
Hair & Beauty		Approved		
Hospitality				
Environmental & Land Based Studies			Approved	
Manufacturing & Product Design				
Public Services				
Retail Business				
Sport & Active Leisure				
Travel & Tourism				

Produced by NW LSC Data & Research Teams

Carlisle Partnership: Diplomas

Data Source

- Data has been taken from the DCSF website (www.dcsf.gov.uk) & is the latest information available at time of publication. Local authorities are likely to hold more up to date information.

Why Information has been used

- Diplomas give students a fully rounded education, combining theoretical & practical learning to equip them for further or higher education & long-term employability. Diplomas will be available as a national entitlement from 2013 in the first fourteen lines for 14-16 year olds, & 17 lines for 16-18 year olds.

Data Analysis

- Carlisle Partnership has been approved to deliver 8 of the 14 Diploma lines.
- 0 Diploma lines were approved for 2008/09 delivery.
- 4 Diploma lines were approved for 2009/10 delivery
- A further 4 more Diploma lines were approved in Gateway 3 for 2010/11 delivery

September Guarantee



	Yr 11 Guarantee (Age 16) (%)				Yr 12 Guarantee (Age 17) (%)			
	Offer Made	Not ready for learning	No offer made	Not recorded	Offer Made	Not ready for learning	No offer made	Not recorded
Cumbria LA	93.6	4.9	1.5	0.0	78.1	17.8	4.0	0.0
Regional Offer	94.7	2.5	2.5	0.2	76.9	12.7	9.6	0.8
National Offer	94.2	2.9	2.7	0.2	79.7	9.6	7.2	3.4

Source: NCCIS Final SG Report 2008/09 (11.12.08)

Produced by NW LSC Data & Research Teams

Data Source

The Source of the cohort data used is NCCIS (National Client Caseload Information Service) – cut off date is 11th December 2008.

Why This Information has been Used

To monitor priorities around reduction of NEET & increasing participation for 16-18 year olds.

16 Year Olds

- Between 2007 & 2008, Cumbria has significantly increased offers by 6.4%, from 87.2% to 93.6%. Although this is closing the gap on National performance (which increased by 3.3%), Cumbria remains below National (94.2%) & is the lowest performing sub region in the NW.
- Cumbria has significantly lower figures for no offer made at 1.5%, comparatively; the National average is 1.2% higher (2.7%). This equates to 100 learners from a cohort of 6,696.
- Cumbria has the highest proportion of young people not ready for formal learning in the NW. The NW average is 2.5% & National figures are 2.9%, however Cumbria is notably higher at 4.9%.
- Of the total not ready for formal learning, 12.7% is due to personal circumstances - lower than national levels of 18.9% & NW of 24.3%.

17 Year Olds

- Offers made (78.1%) are above NW figures (76.9%) but below national (79.7%)
- Those not ready to enter formal learning at 17.8%, is significantly higher than the NW average of 12.7%. When comparing this to the National average of 9.6%, Cumbria is almost double & equates to 278 young people.
- Comparatively, Cumbria has delivered high results for no offer made; 4% is one of the lower LAs in the region. This is at 63 young people from a possible 1559. As the NW average is 9.6%, Cumbria has exceeded delivery.

Care to Learn



- 16% of teenage mothers in Cumbria had taken up Care to Learn funding at August 2008, below the North West average (21%)
- By January in 2009 the take up rate of the scheme had decreased to 14%, below the North West average (18%)

Produced by NW LSC Data & Research Teams

Data Source

The data shows Care to Learn (C2L) take-up against the eligible cohort. The take up is based on the live births of mothers aged under 20 & is adjusted for movement into & out of the area. The data is taken from the LSC intranet.

Why this information has been used

C2L supports young parents who are following any form of publicly-funded learning with the intention that it may lead to progression on to further achievement.

Data Analysis

Take up in the North West region is above the national average which is 16% in August 2008 & 13% in January 2009

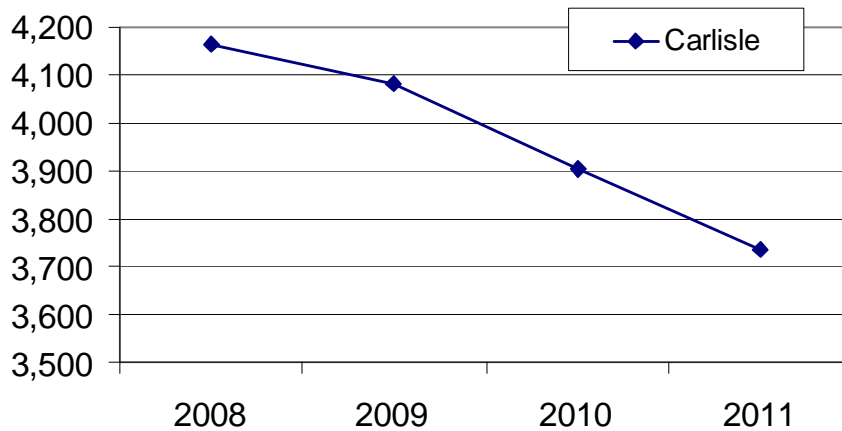
Points to consider

- The C2L data is based on the 2005 live birth rates - however the latest conception rates data shows there has been a decrease in teenage conception rates across the North West since 2005, & therefore teenage live births will also have decreased further than the C2L data suggests.
- Is the high take up of the scheme a positive or negative thing?
 - A high take up suggests that there is good IAG & effective support in place to encourage teenage mothers back into learning.
 - However, high birth rates suggest that teenage pregnancy is an issue & further work is required to raise teenagers aspirations.

16-18 Cohort



16-18 Cohort in Carlisle 2008 to 2011



Source: ONS Sub-national Population Projections based on 2006 mid-year estimates
Produced by NW LSC Data & Research Teams

Data Source

The Source of the cohort data used is the Office For National Statistics, this data is Sub-national Population Projections based on the 2006 mid-year Population Estimates – This is the latest available **forecast** data at the time of writing.

Why This Information has been Used

This slide has been added to highlight the current & forecast size of the 16-18 cohort in the local area, important to inform decisions on commissioning of provision for residents of the area, as well as addressing NEET, & informing discussions with key partners.

The LSC recognises that there are variations between different sources of cohort data, the dataset used here is used nationally to allocate budgets & to set & monitor targets, locally informed cohort data can be very useful to complement this dataset.

Data Analysis

In 2008 the 16-18 cohort in Carlisle was 4,165

By 2011 it is forecast to fall to 3,735 (-430) which is a reduction of 10.3%

The overall Cumbria LSC area Reduction is 7.5%

North West = -8.1%

England = -5.3%

Points to Consider

What are the implications for this reduction on the volumes of provision commissioned for Carlisle's resident young people?

For example: Mix & Balance, with smaller learner volumes are institutions able to offer a full breadth of curriculum?

When placed alongside the travel to learn analysis shown later does the reduction of 430 young people have significant implications for discussions with other local areas?

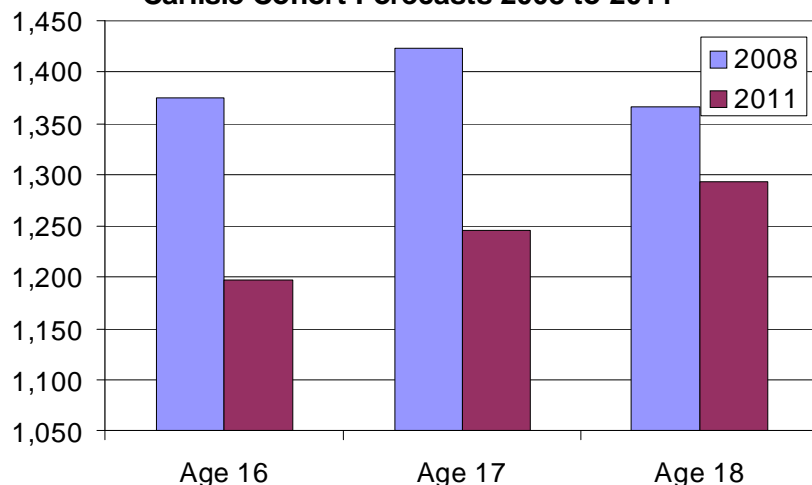
Local Data

If there are significant differences between the national data set used here & local cohort information

16-18 Cohort (2)



Carlisle Cohort Forecasts 2008 to 2011



Source: ONS Sub-national Population Projections based on 2006 mid-year estimates
Produced by NW LSC Data & Research Teams

Data Source

ONS – Sub-national Population Projections based on the 2006 mid year population estimates. – the latest available **forecast** data at the time of writing

Why This Information has been Used

This slide has been included to demonstrate where the reductions in the 16-18 cohort of the area are concentrated – the specific age of the cohort can effect decisions on actions taken around provision, NEET, & delivering the September Guarantee.

Data Analysis

In Carlisle in 2008 the 16-18 cohort comprises:

1,375 age 16,

1,423 age 17

1,367 age 18

The volume of those aged 16 & 17 are forecast to have a similar reduction by 2011 (-178 & -177 or -12.9% & -12.4%).

Points to Consider

Regionally, the NEET rate is higher for those aged 17 than those aged 16 – what are the implications for NEET strategy in the area in light of the reduction of 17 year olds in 2011?

How does the reduction of both 16 & 17 year olds effect the planning of post 16 provision in Carlisle?

The September Guarantee was extended to 17 year olds in 2008 to give those who had enrolled on 1 year or short courses, or who had left their previous activity, a further opportunity to participate. This means that all young people who reached the statutory school leaving age in 2008 or 2009 are entitled to an offer under the Guarantee in 2009. Local authorities are responsible for ensuring that the Guarantee is met. Combined analysis of the data above & what proportion of the cohort are on 1 year short courses may be necessary.

Local Data

As with the previous slide, local cohort information broken down by single age may show discrepancies when compared to the national data set – what are the implications of this? How can this be reconciled to deliver sound planning of training provision for young people resident in the local area?

Cohort Activity

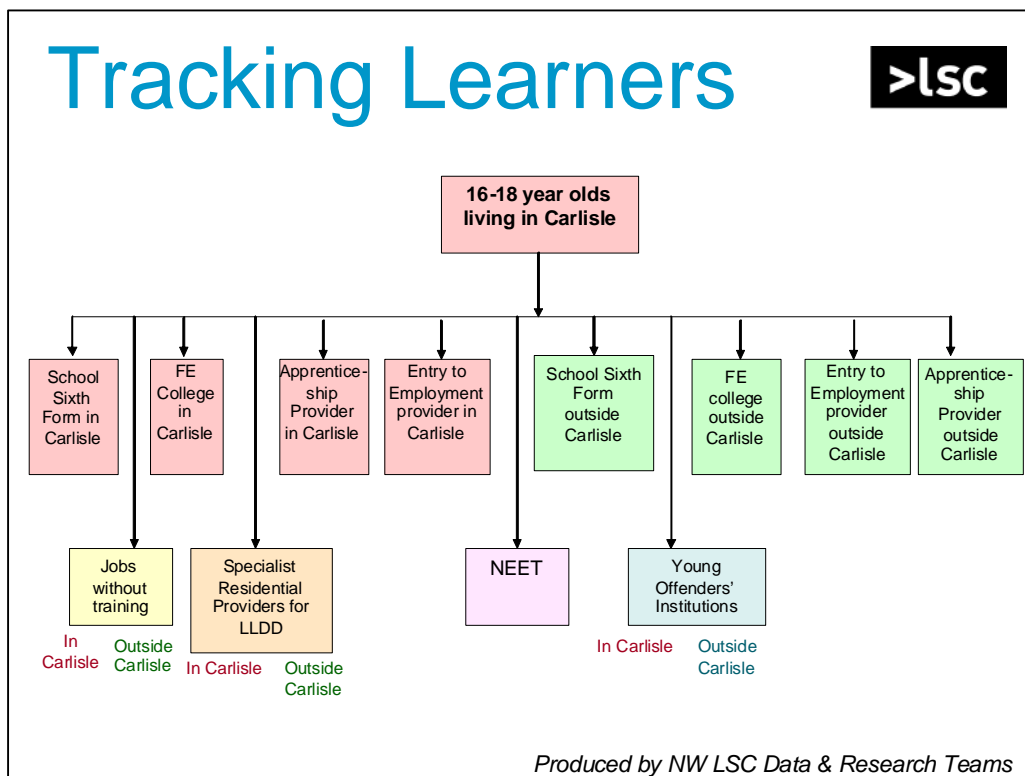


Leading learning and skills

04

Produced by NW LSC Data & Research Teams

Tracking Learners



After the MoG changes are enacted, Cumbria County Council will take responsibility for planning & funding learning opportunities for the cohort of 16-18 year olds resident in Carlisle. This cohort of young people will make decisions not only about what type of learning they want to enter – whether it be academic A levels in a school sixth form, vocational learning in an FE college or a work based opportunity via an Apprenticeship – but also about which organisation they will learn with. Some of these providers will be based within the Carlisle boundary, others will not.

It will be necessary to track the progress of all these young people to ensure they have taken up learning which maximises their chances of success. This will mean that the LA has to have effective working relationships with all of the providers who support young Carlisle residents.

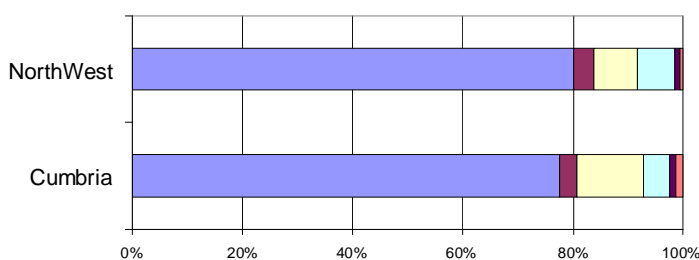
Those who do not take up a learning opportunity – NEETs & those who enter jobs without training – may later return to learning.

Those who do may not stay in learning, but leave to take up work. This age group is mobile & without economic constraints like mortgages.

Year 11 School Leaver Destinations



Year 11 School Leaver Destinations



	Cumbria	NorthWest
No response	1.3%	0.8%
Moved out of contact	1.2%	0.8%
Not Settled in a Full time Activity	4.7%	6.7%
Full Time Employment	12.0%	7.9%
Full Time Training (non emp)	3.1%	3.7%
Within full time education	77.7%	80.2%

Source: Connexions Activity Survey 2008

Produced by NW LSC Data & Research Teams

Data Source

- The source of the data is the Connexions Services Activity Survey 2008, in particular the Year 11 School Leaver Destinations table. The national survey has not yet (as of 30/3/09) been published but the Local Authority level figures have been obtained from the relevant Connexions services.

Why This Information has been used

- This information on school leaver destinations gives a holistic picture of all young persons activity & as such adds to the LSC's own learner data. It is used as an indicator to help plan commissioning & is a key indicator of potential NEET Young People as well as informing the performance of the September Guarantee offer.

Data Analysis

- 80.8%** of young people in **Cumbria** have moved on to full time education or full-time training (not including those receiving training whilst in employment). This is **below** the regional average but the percentage has **increased** since the previous year 2007.
- 12.0%** of young people have moved on to full time employment. This is **above** the regional average.
- 4.7%** of young people are not settled into a full time activity. This is **below** the regional average & the percentage has **decreased** since the previous year 2007.

Points to Consider

- How does the percentage for Not Settled in a Full Time Activity compare to the percentage that have not received an offer under the September Guarantee. Could the September Guarantee performance reduce further those Not Settled.
- How does the percentage for Not Settled in a Full Time Activity compare to the percentage showing as NEET.

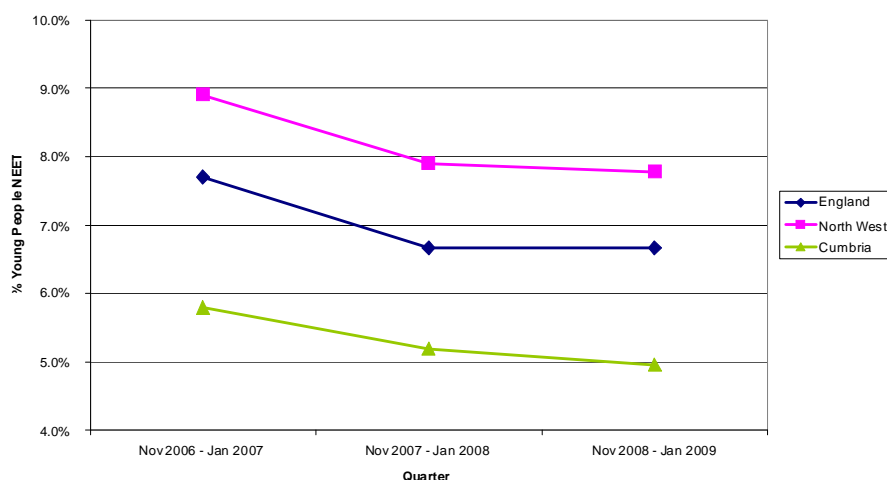
Local Data

- Comparison between this Destination data & NEET data: The part time employment & learning categories which are part of "Not settled – Active" in this Activity Survey would normally be reported in the Learning or Employment EET figures for NEET reporting. Hence some Connexions organisations when they publish this data in their local 'Moving On' report will use NEET categorisation instead.

Not in Education Employment or Training Headline Figures



Annual NEET Using DCSF Version of NCCIS



Source: DCSF NCCIS

Produced by NW LSC Data & Research Teams

Data Source

- NEET figures collated by DCSF on behalf of Connexions services. This version is known as the NCCIS version & looks at destinations of young people. The percentages shown are the adjusted NEET where the NEET figure includes an estimate of how many of those recorded as Not Known are actually NEET

Why This Information has been used

- NEET is a key indicator of potential to engage with learning & as such provides a context for Commissioning
- The 3 month period of November to January is the period chosen to make annual comparisons for this NCCIS version of NEET, e.g. when setting LAA targets & is used by the LSC nationally. Although it is not the version of NEET that the UK wide PSA target 14 is set against, this version has advantages as it is available at Local Authority level, & is updated monthly, not annually & is known as Performance Indicator 117.

Data Analysis

- **5.0%** of young people in **Cumbria** were NEET in the latest annual comparison period available, November 2008 – January 2009
- This has **decreased** by **0.8%** points since the first period November 2006 - January 2007, & is now **2.8%** points **below** the regional average
- **Cumbria** trend of NEET is **improving, but not quite as quickly** in comparison with the Northwest & Nationally

Points to Consider

- Are there good practice examples addressing NEET that have contributed towards this improved performance & can they be shared with other Local Authorities?
- What issues have contributed towards an improving NEET situation, & have measures been taken to reinforce these ?
- Has the economic downturn influenced these figures or are other factors more important
- How does this compare to the National PSA target which is **7.0%** for 2010? (Target taken from NCCIS NEET Tables, indicative 2010 target)

Local Data

- Some Connexions services prefer to use a different measure of NEET using the same NCCIS data. What is shown here is the DCSF preferred measure which the young person is allocated to a LA according to the institution they study at, & only if they are not studying at an institution is their resident LA used. Some Connexions services prefer to use a measure where all young people are recording against their resident LA therefore this is the measure that they share with LAs in their area. There is also a measure that allocates a Young Person to a local authority by using the location of the Connexions Service that they access.

NEET Cohort & Not Known Comparison



January 2009	Adjusted NEET	NEET %	16-18 cohort	16-18s not known	% 16 - 18s not known	% NEET Jan 08	NEET Change Jan 08 - Jan 09
North West	17,909	7.5%	242,974	7,475	3.1%	7.9%	-5.3%
Cumbria Total	805	5.0%	16,354	345	2.1%	5.4%	-7.7%
Barrow	187	6.0%	3,569	147	4.1%	6.2%	-3.2%
North Area	232	4.2%	5,727	68	1.2%	5.1%	-17.6%
Kendal	70	3.5%	2,255	51	2.3%	2.9%	20.7%
Whitehaven	113	6.4%	1,905	32	1.7%	6.7%	-4.5%
Workington	142	5.4%	2,884	46	1.6%	5.1%	5.9%

Source: DCSF NCCIS

Produced by NW LSC Data & Research Teams

Data Source

- The source of this data is the NEET figures collated by DCSF on behalf of Connexions services. This version is known as the NCCIS version & looks at destinations of young people. The figures shown are the adjusted NEET where the NEET figure includes an estimate of how many of those recorded as Not Known are actually NEET. The district level information was sourced from the Connexions service of Cumbria.

Why This Information has been used

- NEET is a key indicator of potential to engage with learning & as such provides a context for Commissioning
- Young people whose activity is Not Known need to be brought into meaningful activity.
- Cohort information shown here is the Cohort starting from school leaving age, so 16 year olds still in education are excluded

Data Analysis

- 2.1%** of young people in **Cumbria** were classified as situation 'Not Known' in January 2009
- This is **below** the regional average
- Cumbria** trend of Not Known is **similar** in comparison with the North West January 2008 to January 2009 months
- The overall NEET situation in Cumbria hides some large differences in trend between the districts. Kendal NEET has increased from 2.9% in January 2008 to 3.5% in January 2009 whereas North Area has decreased from 5.1% to 4.2%; however care must be taken before using these changes to make predictions in the future due to the very small number of young people recorded in some districts.

Points to Consider

- Are there examples of good practice in addressing the number of young people whose situation is Not Known that could have contributed towards this improved performance & can they be shared with other Local Authorities?
- What issues have contributed towards this deteriorating/improving Not Known situation, & have measures been taken to address these ?
- Has the economic downturn influenced these figures or are other factors more important?

Not in Education Employment or Training Age Trend



	Age 16			Age 17			Age 18		
	Jan 09	Jan 08	% change in year	Jan 09	Jan 08	% change in year	Jan 09	Jan 08	% change in year
England	5.4%	5.5%	-2%	6.7%	6.7%	1%	7.4%	7.2%	1%
North West	5.8%	6.3%	-7%	7.5%	7.9%	-5%	8.5%	8.7%	-2%
Cumbria	3.4%	3.6%	-6%	4.3%	4.7%	-9%	6.5%	6.4%	1%

Source: DCSF NCCIS

Produced by NW LSC Data & Research Teams

Data Source

- The source of this data is the NEET figures collated by DCSF on behalf of Connexions services. This version is known as the NCCIS version & looks at destinations of young people. The percentages shown are the adjusted NEET where the NEET figure includes an estimate of how many of those recorded as Not Known are actually NEET

Why This Information has been used

- NEET is a key indicator of potential to engage with learning & as such provides a context for Commissioning
- The age split has been used to point out the changing nature of Young People in NEET. Changes in the mix of ages of young people that are NEET can point to reasons why the headline NEET figure may be changing

Data Analysis

- For January 2009, **Cumbria's** group of NEET young people **has fewer 17 year olds than** the North West average
- Compared to last year, the group of young people whose situation is NEET in **Cumbria** are now **older**
- This trend in change of age is **the same** the region as a whole

Points to Consider

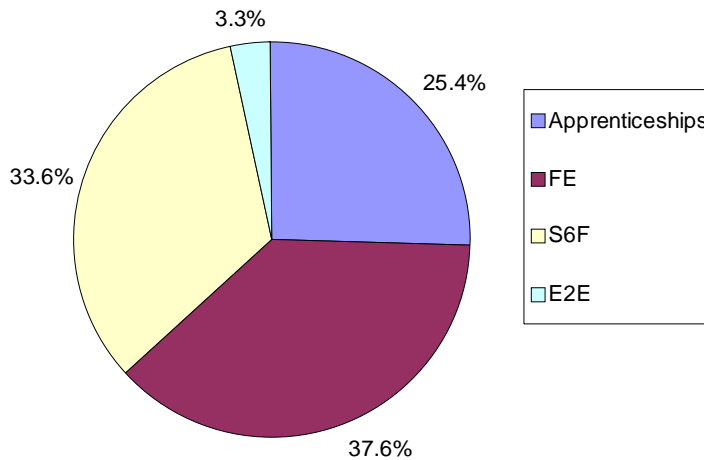
Are the efforts for next years September Guarantee targeted at the age with the highest proportion of NEET?

Is this pattern of NEET age caused by educational or employment factors?

Overall Participation in Learning by Route



Cumbria Overall Participation by Route 2007/08



LSC FE, WBL ILR. School Census Data

Produced by NW LSC Data & Research Teams

Data Source

LSC FE, WBL ILR. ESF Short Record. Schools Census Data
2007/08 Full Academic Year

Why This Information has been Used

To show the balance of activity of young people in the local area across the different routes. The percentages shown are of those who participate, rather than the whole cohort. (i.e. does not include NEET, Employment).

Data Analysis

37.6% of 16-18 learners in the local area study in FE (**5,418**)

Compared to **58.3%** regionally

25.4% of 16-18 learners in the local area have undertaken an apprenticeship (**3,663**)

Compared to **18.3%** regionally

33.6% of 16-18 learners in the local area study in School Sixth Forms (**4,838**)

Compared to **18.2%** regionally

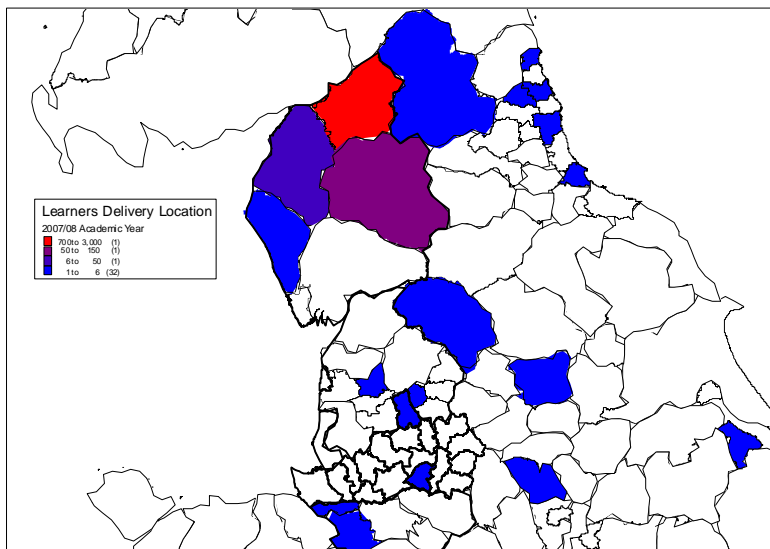
3.3% of 16-18 learners in the local area are engaged with E2E (**479**)

Compared to **5.2%** regionally

Points to Consider

- There are also approximately 430 young people in the North West attending specialist residential provision for Learners with Learning Difficulties & / or Disabilities
- It is not currently possible to attribute young people in Young Offenders institutions to individual local authorities as their home postcode is recorded as that of the institution. However, there are currently 573 learners in young offenders institutions in the North West.
- There are a further **1,305** learners in ESF funded provision in the local area

16-18 Travel to Learn Out-Flows Carlisle Residents



Note: "In-Flow" Learners Travelling into the Local Area Are Highlighted in the Accompanying Data Pack

Source: LSC ILR Data & Schools PLASC 2007/08

Produced by NW LSC Data & Research Teams

Data Source

- Full Year 2007-08 Further Education F05 ILR; Work Based Learning data & School Census data combined.

Why This Information has been used

- This information shows all the Young People engaged in learning described above that are resident in this District/Local Authority & shades the map according to where the physical location of their learning is, excluding where the delivery location is not known. For Work Based Learning, the delivery location is the location of their Employer
- This indicates which local authorities are responsible for the provision accessed by young people who live in **Carlisle**

Data Analysis

- **Eden** is the next most significant Delivery Location outside their resident Local Authority for Young People living in **Carlisle**
- No other districts have any significant numbers of young people from Carlisle studying in
- **93.5%** of Learners engaged in FE funded, WBL or School 6th form learning attend a provider based in their own resident local authority

Points to Consider

Are the numbers of Young People travelling outside of their resident local authority/district significant.

Which providers do these Learners Travel to ?

Local Data

The data shown excludes Learners where delivery location is not known which includes where the postcode given as a delivery location is not recognised.

Learner Analysis By Route



Leading learning and skills

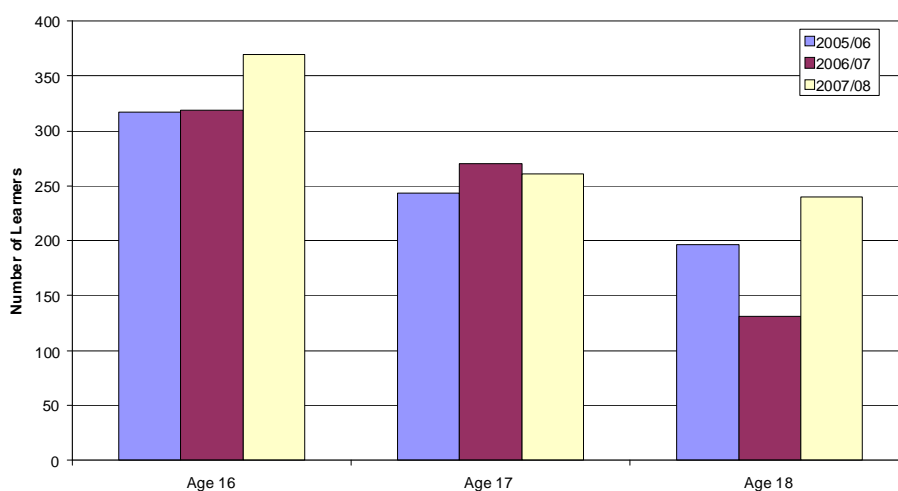
05

Produced by NW LSC Data & Research Teams

16-18 FE Participation



FE Learners by Individual Age Band



Source: FE ILR Final Data Freeze

Produced by NW LSC Data & Research Teams

Data Source

Further Education ILR, final data freeze. Carlisle residents (16-18) accessing FE learning.

Why this information has been used

To indicate the level of participation at age 17 – traditionally there is a decrease in participation at age 17.

Data Analysis

- Participation at age 16 has **increased** by **17%** over the 3 year period – over 50 young people.
- Participation at age 17 has also **increased** by **7%** - over 18 young people, despite a decrease since 2006/07.
- Participation at age 18 has **increased** by **22%**, 44 learners.
- 18 year olds currently account for 28% of 16-18 learners, this is high compared to many areas in the North West. According to population estimates for 2008 18 year olds account for 33% of the cohort.

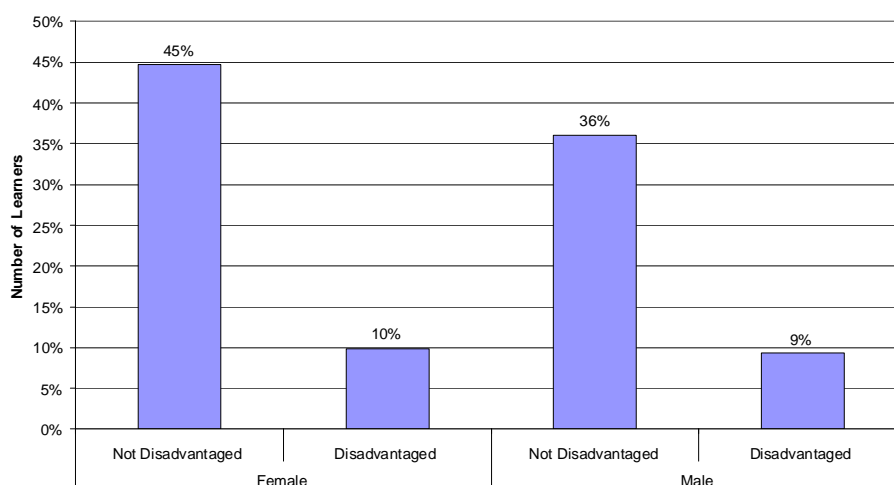
Points to consider

- The number of 17 year olds in learning has decreased since 2006/07, has there been a shift in FE to WBL provision for learners aged 18 or are these young people falling into the NEET category?

16-18 FE Participation



FE Learners by Gender and Disadvantage



Source: FE ILR Final Data Freeze

Produced by NW LSC Data & Research Teams

Data Source

Further Education ILR, final data freeze. Carlisle residents (16-18) accessing FE learning.

Why this information has been used

This information has been included to determine whether there are groups of learners who are currently being under-represented in learning. We need to ensure that all young people – regardless of their gender, race, disability & background - have the opportunities they need to succeed.

Data Analysis

Female learners account for **55%** of the total in learning.

Disadvantaged learners account for **19%** of the total in 2007/08, this figure has **fallen** from 23% in 2005/06.

The number of learners who are not disadvantaged has **increased** by **21%** since 2005/06, whereas participation of disadvantaged learners has **decreased** by **3%**.

LLDD learners account for **9%** of total learners; this is **below** the regional average of 15%.

98% of Carlisle resident learners are from a White background, this corresponds with Census population figures.

Points to Consider

Should the number of disadvantaged learners be decreasing given that the number of learners who aren't disadvantaged is increasing? Disadvantaged learners will be the hardest to engage in learning.

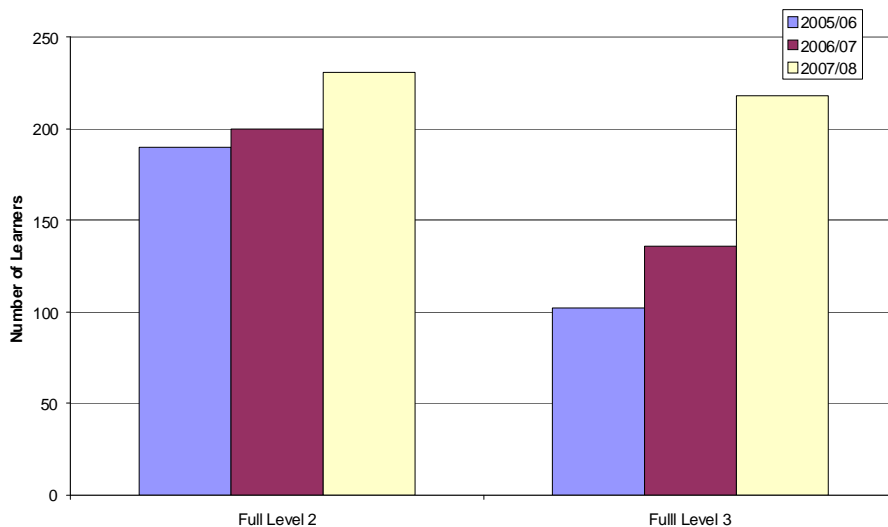
Should there be a greater proportion of LLDD learners? Are these young people accessing WBL or falling into the NEET category?

Has the local population diversified since the Census figures were taken? Is this reflected in learning?

16-18 FE Participation



Full Level 2 and Full Level 3 Participation



Source: FE ILR Final Data Freeze

Produced by NW LSC Data & Research Teams

Data Source

Further Education ILR, final data freeze. Carlisle residents (16-18) accessing FE learning.

Why this information has been used

One of the young people's PSA targets is to increase the proportion of young people achieving Level 2/Level 3 by age 19. The PSA target runs until 2010/11; we are looking for Level 2/3 participation to increase in order to achieve this target – this is to analyse the contribution of FE learning towards this.

Data Analysis

Full Level 2 participation

- **increased** by **5%** (10 learners) between 2005/06 & 2006/07.
- **increased** by **16%** between 2006/07 & 2007/08 (31 learners).
- overall **increase** since 2005/06 was **22%**, this is **higher** than the Cumbria increase of 11%, North West increase of 15% & national increase of 10%.

Full Level 3 participation

- **increased** by **33%** between 2005/06 & 2007/08 (34 learners).
- **increased** by **60%** between 2006/07 & 2007/08 (82 learners).
- overall **increase** since 2005/06 was **114%** (more than double), this is much higher than the 13% increase across Cumbria, 12% across the North West & 10% nationally & is more than double the original figure.

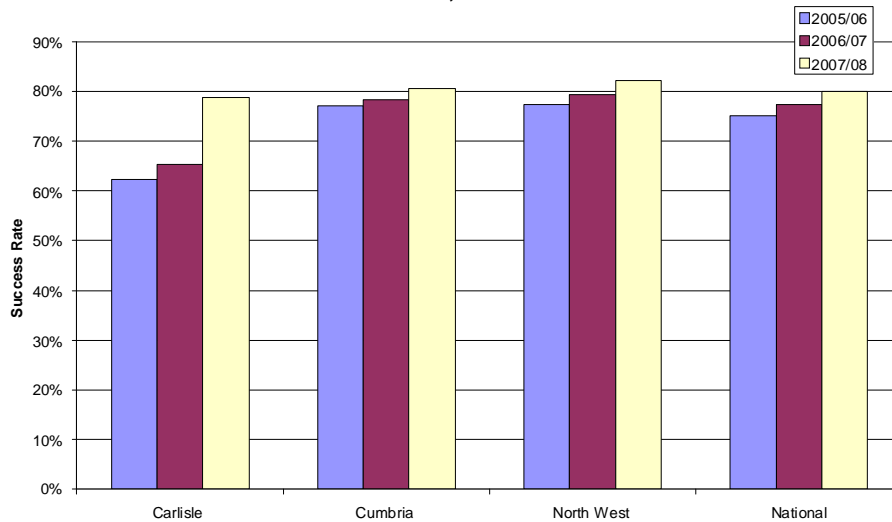
Points to consider

Increases in full Level 2 & full Level 3 learning have been significant in Carlisle.

16-18 FE Participation



FE Success Rates, 2005/06 to 2007/08



Source: FE ILR Final Data Freeze

Produced by NW LSC Data & Research Teams

Data Source

- Further Education Success Rates 2007/08 final freeze, Carlisle residents (16-18) attending FE provision.
- The success rate is defined as the number of learning aims achieved divided by the number of learning aims started.

Why this information has been used

- This data is included to compare how the residents of the area are performing in terms of achievement compared to the North West & Nationally. All learners should have the same opportunities & chance of successfully completing their course.

Data Analysis

- Success rates for Carlisle residents are slightly **lower** than the regional & national averages at 79% compared to 82% & 80% respectively.
- Good progress has been made to increase success rates with a **14% point increase** since 2006/07.
- This rate of improvement is well **above** the level seen nationally & regionally.
- Statistical Neighbours in the NW: not available for Carlisle.
- The 2007/08 success rate for Carlisle residents is **lower** than the rate in Lancashire (84%), but Carlisle has shown a **higher** rate of improvement since 2005/06.

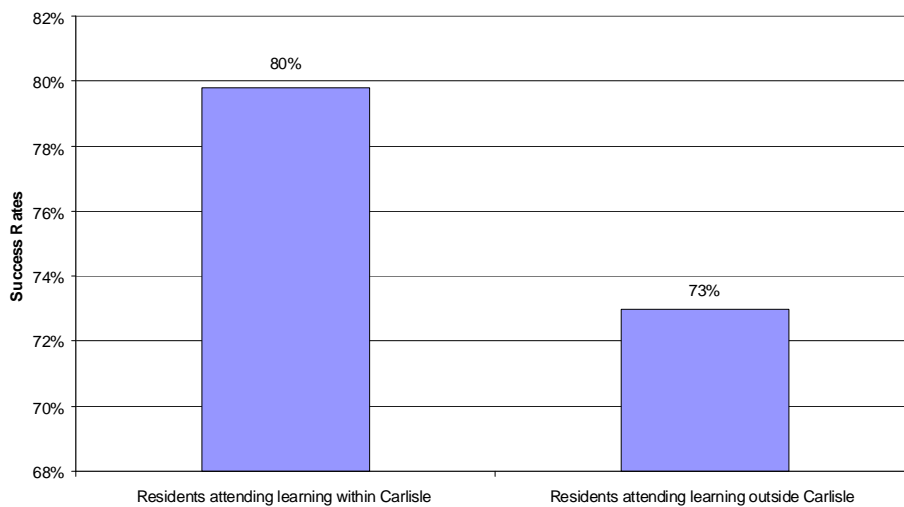
Points to Consider

- Success rates have improved significantly for residents but they are still below the regional average.

16-18 FE Performance



FE Success Rates by Provider Location, 2007/08



Source: FE ILR Final Data Freeze

Produced by NW LSC Data & Research Teams

Data Source

- Further Education Success Rates 2007/08 final freeze, Carlisle residents (16-18) attending FE provision.
- The success rate is defined as the number of learning aims achieved divided by the number of learning aims started.

Why this information has been used

Learners need to have access to good quality training, if learners are travelling a long distance to access provision this may have a detrimental effect on their chances of successfully completing the course.

Data Analysis

- 72% of learners attend learning within Carlisle, 94% of learners access provision within Cumbria.
- Residents travelling outside the area have a **lower** success rate than those staying within Carlisle to access provision – 80% within Carlisle, 73% outside Carlisle in 2007/08.
- Carlisle has 2 FE providers – Carlisle College which is a GFE College, & Cumbria County Council.
- Within Carlisle, residents attending Carlisle College have a success rate of 80%, which is **higher** than the benchmark of 77% for the GFE colleges.
- Residents attending Cumbria County Council have a success rate of 79%, which is **higher** than the provider type benchmark of 69%.

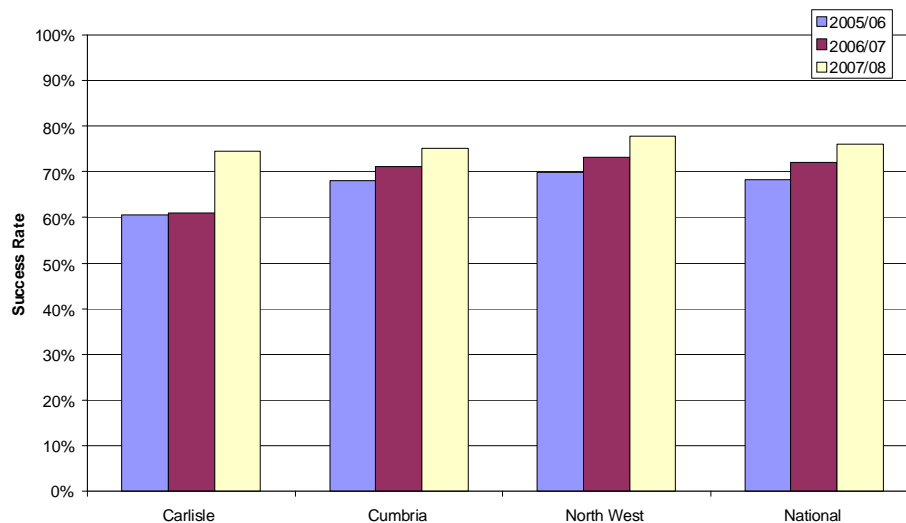
Points to consider

- Provision within Carlisle appears to be high performing.
- The low success rate for learners travelling outside the area to access provision suggests more research may be needed here to identify what courses they are accessing & whether this is available locally.

16-18 FE Performance



FE Long Level 2 Success Rates



Source: FE ILR Final Data Freeze

Produced by NW LSC Data & Research Teams

Data Source

- Further Education Success Rates 2007/08 final freeze.
- The success rate is defined as the number of learning aims achieved divided by the number of learning aims started. Carlisle residents (16-18) attending FE provision.

Why this information has been used

- This data has been included to indicate performance at Level 2 – this is critical to achievement of the LSC's PSA L2/L3 achievement targets.
- **Long qualifications (longer than 24 weeks)** have been included here as not all Level 2 aims are a full Level 2 qualification. Selecting full Level 2 aims only would have excluded many qualifications which have a significant contribution to the number of full Level 2 learners. For example, a GCSE is not a full Level 2 qualification in its own right. However, a learner who is taking 5 GCSEs or more is a full Level 2 learner.

Data Analysis

- Long Level 2 success rates increased from 61% in 05/06 to 74% in 07/08 – an increase of 13% points.
- The success rate for 07/08 is **below** the national & regional averages – 74% compared to 78% for the region & 76% nationally.

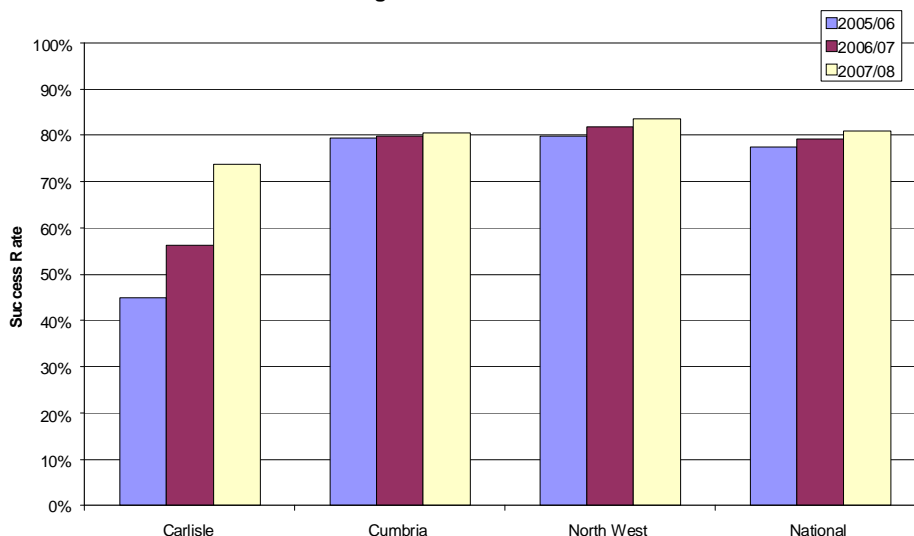
Points to Consider

- Further improvement is needed to raise the area above national & regional benchmarks.

16-18 FE Performance



FE Long Level 3 Success Rates



Source: FE ILR Final Data Freeze

Produced by NW LSC Data & Research Teams

Data Source

- Further Education Success Rates 2007/08 final freeze, Carlisle residents (16-18) attending FE provision.
- The success rate is defined as the number of learning aims achieved divided by the number of learning aims started.

Why this information has been used

- This data has been included to indicate performance at Level 3 – this is critical to achievement of the LSC's PSA L2/L3 achievement targets.
- **Long qualifications (longer than 24 weeks)** have been included here as not all Level 3 aims are a full Level 3 qualification. Selecting full Level 3 aims only would have excluded many qualifications which have a significant contribution to the number of full Level 3 learners. For example, a learner doing A levels may do 3 to become a full Level 3 learner but individually an A level is not a full Level 3 qualification.

Data Analysis

- Long Level 3 success rates are 7% points **lower** than the national average in Carlisle at 74% compared to 81% nationally.
- However, there has been an **increase** of 29% points since 05/06, which is due to large improvements at Carlisle's FE providers.

Points to Consider

- What can be done to further increase success rates as they continue to be below benchmarks?

FE Success Rates by Learner Characteristic



Carlisle

- The overall success rate is **79%**
- The rate of success for females is **78%**
- The rate of success for males is **80%**
- No significant success rate gap between those with and those without a disadvantage

Produced by NW LSC Data & Research Teams

In **Carlisle 857** of young people in FE are White , **10** are from a BME group

The overall 16-18 FE Success Rate for resident of **Carlisle** is **79%** - compared to a regional (NW) rate of 82%.

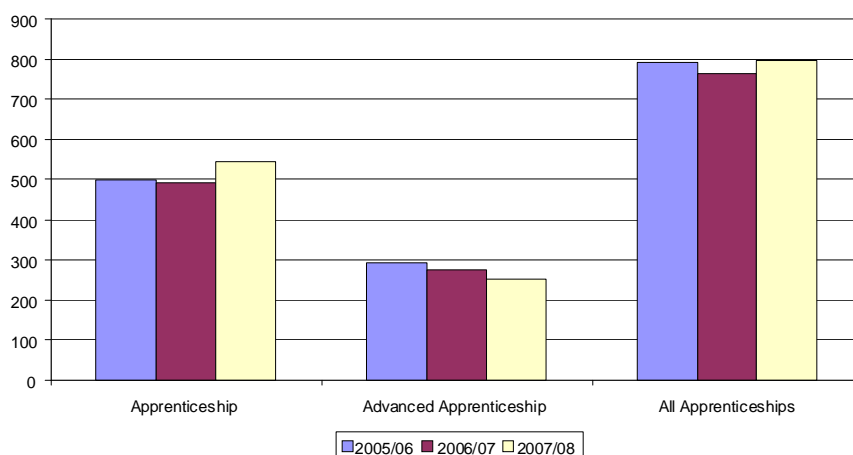
The points made in the slide are a summary of analysis of the data, the accompanying dataset can be used to assess performance by learner characteristic.

In some smaller areas, in terms of FE learner volumes, the number of learners must be used to provide context to the percentage analysis.

Apprenticeships Residency Participation



Participation In Learning 16-18: Carlisle



Source: LSC WBL ILR Data 2005,06, 2006/07, 2007/08 Final Period

Produced by NW LSC Data & Research Teams

Data Source

Work Based Learning ILR data 2005/06, 2006/07 & 2007/08 (Final Period data for each year)

Why This Information has been Used

- To provide a clear view of the 16 to 18 year olds in Carlisle participating in an Apprenticeship Programme. Split shown to highlight Apprenticeships (Level 2) & Advanced Apprenticeships (Level 3), as well as the overall position.
- To meet Demand Led Funding criteria, Participation comprises the carry over from the previous year plus starts, excluding less than 6 week starts, in the relevant year.

Data Analysis

- All Apprenticeships have increased by 1% between 2005/06 & 2007/08
- Apprenticeships (Level 2) have increased by 10% between 2005/06 & 2007/08
- Advanced Apprenticeships (Level 3) have decreased by 14% between 2005/06 & 2007/08

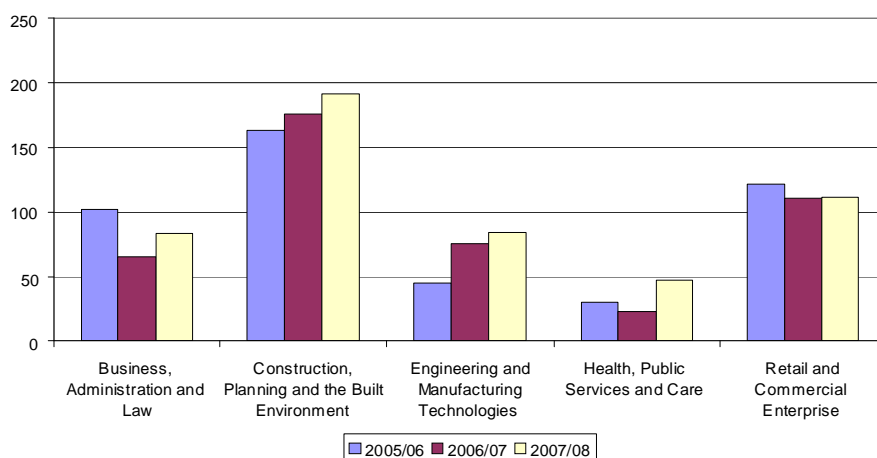
Points to Consider

- Residents in Carlisle account for 21.8% of Cumbria's Apprenticeships.
- Apprenticeships for Cumbria region increased by 1.6% between 2005/06 & 2007/08.
- Advanced Apprenticeships for Cumbria region decreased by 1.8% between 2005/06 & 2007/08.
- Is the reduction in residents attending Advanced Apprenticeships due to an increase in those attending Colleges?

Level 2 Apprenticeships Participation by Sector



Participation at Level 2: Carlisle



Source: LSC WBL ILR Data 2005,06, 2006/07, 2007/08 Final Period

Produced by NW LSC Data & Research Teams

Data Source

Work Based Learning ILR data 2005/06, 2006/07 & 2007/08 (Final Period data for each year)

Why This Information has been Used

- To provide a clear view of the 16 to 18 year olds in Carlisle participating on a Level 2 Apprenticeship Programme by sector.
- Only the Top 5 Participation sectors in Carlisle included in the chart.
- To meet Demand Led Funding criteria, Participation comprises the carry over from the previous year plus starts excluding less than 6 week starts in the relevant year.

Data Analysis

- **Business, Administration & Law** decreased by 19% between 2005/06 & 2007/08
- **Engineering & Manufacturing Technologies** increased by between 2005/06 & 2007/08
- **Health, Public Services & Care** increased significantly by 57% between 2005/06 & 2007/08

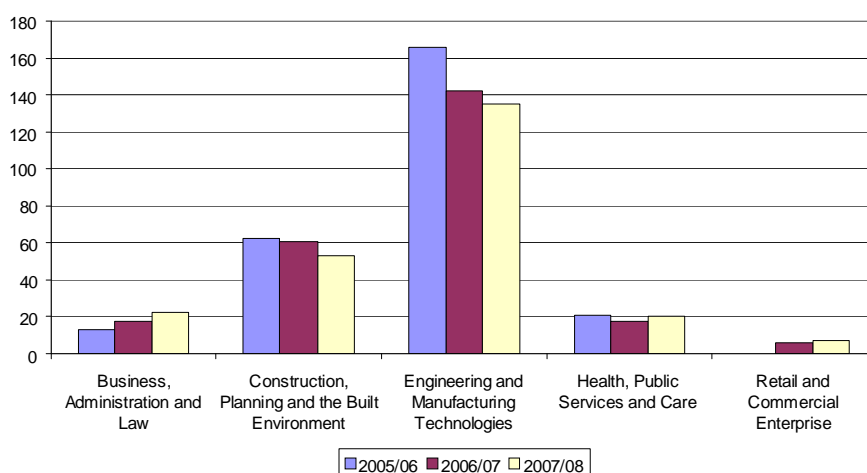
Points to Consider

- The decrease in Business, Administration & Law reflects the Cumbria decrease.
- The increase in Engineering & Manufacturing Technologies is consistent with Cumbria where there has been a 19.9% increase in this sector.
- Health, Public Services & Care reflects the Cumbria 40.9% increase in this sector.

Level 3 Advanced Apprenticeships Participation by Sector



Participation at Level 3: Carlisle



Source: LSC WBL ILR Data 2005,06, 2006/07, 2007/08 Final Period

Produced by NW LSC Data & Research Teams

Data Source

Work Based Learning ILR data 2005/06, 2006/07 & 2007/08 (Final Period data for each year)

Why This Information has been Used

- To provide a clear view of the 16 to 18 year olds in Carlisle participating on a Level 3 Apprenticeship Programme by sector.
- Only the Top 5 Participation sectors in Carlisle included in the chart.
- To meet Demand Led Funding criteria, Participation comprises the carry over from the previous year plus starts excluding less than 6 week starts in the relevant year.

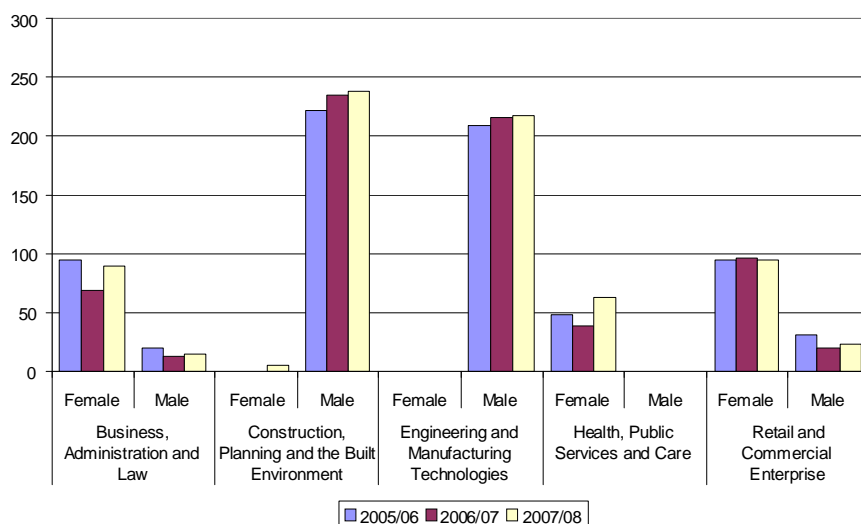
Data Analysis

- **Business, Administration & Law** increased by 69% between 2005/06 & 2007/08
- **Construction, Planning & the Built Environment** decreased by 15% between 2005/06 & 2007/08
- **Engineering & Manufacturing technologies** decreased by 19% between 2005/06 & 2007/08

Points to Consider

- Cumbria's 19.5% reduction in Construction, Planning & the Built Environment is higher than Carlisle's 15% decrease.
- Engineering & Manufacturing Technologies decrease in participation contrasts with Cumbria's 16.3% increase.

Apprenticeships Participation by Gender & Sector



Source: LSC WBL ILR Data 2005,06, 2006/07, 2007/08 Final Period

Produced by NW LSC Data & Research Teams

Data Source

Work Based Learning ILR data 2005/06, 2006/07 & 2007/08 (Final Period data for each year)

Why This Information has been Used

- To provide a clear view of the 16 to 18 year olds in Carlisle participating on an Apprenticeship Programme by sector & gender.
- Only the Top 5 Participation sectors in Carlisle included in the chart.
- To meet Demand Led Funding criteria, Participation comprises the carry over from the previous year plus starts excluding less than 6 week starts in the relevant year.

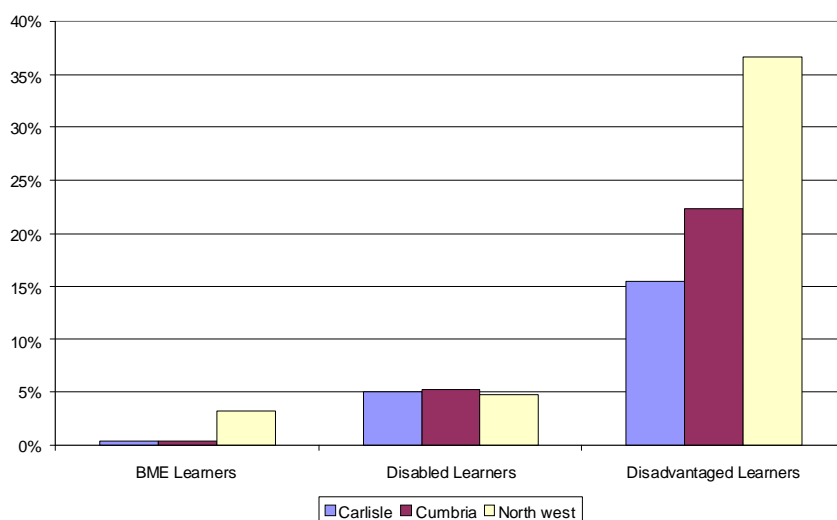
Data Analysis

- **Construction, Planning & the Built Environment** have very low female participation over the 3 years.
- **Engineering & Manufacturing technologies** has low female participation over the 3 years
- **Health, Public Services & Care** has a small increase in female participation over the 3 years.

Points to Consider

- The Female to Male participation ratio is consistent with the Cumbria region.
- A small proportion of Female participation in Construction, Planning & the Built Environment in Cumbria.
- Engineering & Manufacturing Technologies Female to Male participation are consistent with Cumbria.

Apprenticeships Participation by Learner Characteristic



Source: LSC WBL ILR Data 2007/08 Final Period

Produced by NW LSC Data & Research Teams

Data Source

Work Based Learning ILR data 2007/08 (Final Period data)

Why This Information has been Used

- To provide a clear view of the 16 to 18 year olds in Carlisle participating in an Apprenticeship Programme. Split by Ethnicity, Disability & disadvantaged compared by region & North West region.
- To meet Demand Led Funding criteria, Participation comprises the carry over from the previous year plus starts excluding less than 6 week starts in the relevant year.

Data Analysis

- BME learners' participation in Carlisle is 2.6 percentage points below the North West region percentage & consistent with the Cumbria participation percentage of BME learners.
- Disabled learners' participation in Carlisle is consistent with the North West & Cumbria percentage of disabled learners.
- Disadvantaged learners' participation in Carlisle is 22 percentage points below the North West region percentage, & 7 percentage points lower than the Cumbria participation percentage of disadvantaged learners.

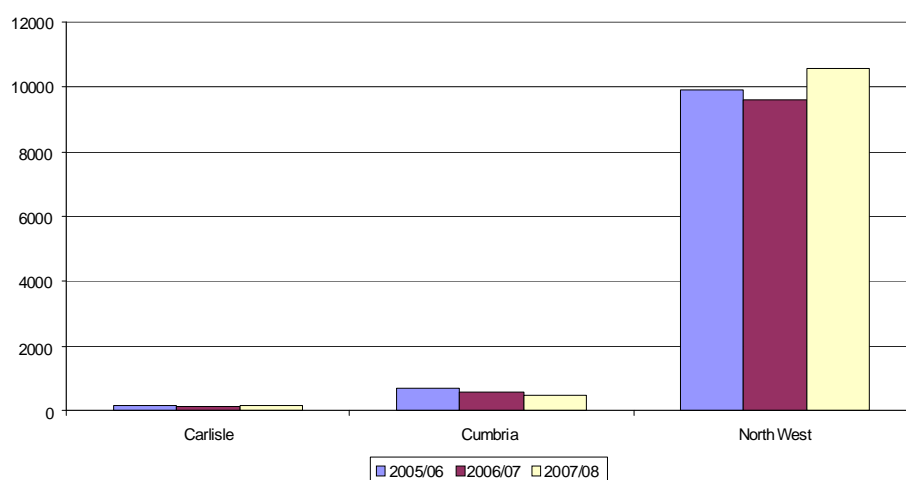
Points to Consider

- Disadvantaged Learner participation has increased 2.4% between 2005/06 & 2007/08.

Entry to Employment (E2E) Residency Participation



Entry to Employment 16-18 Participation



Source: LSC WBL ILR Data 2005,06, 2006/07, 2007/08 Final Period

Produced by NW LSC Data & Research Teams

Data Source

- Work Based Learning ILR data 2005/06, 2006/07 & 2007/08 (Final Period data for each year)

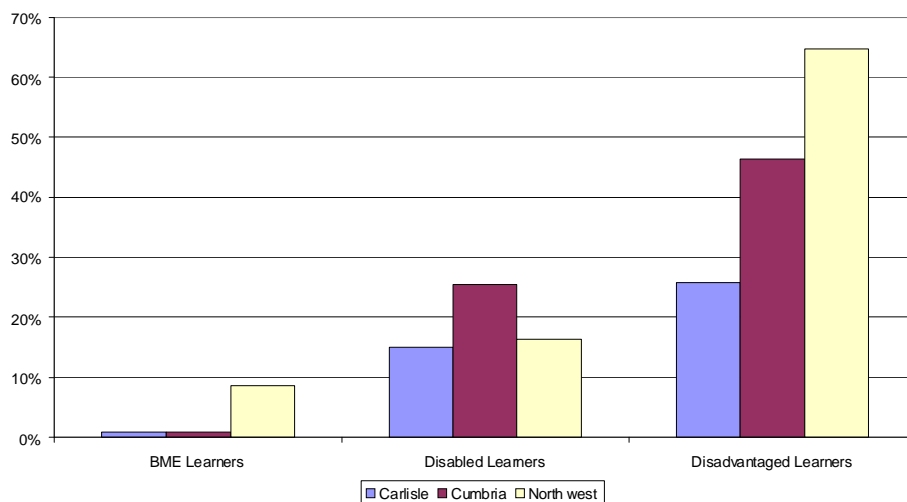
Why This Information has been Used

- To provide a clear view of the 16 to 18 year olds in Carlisle participating in an Entry to Employment Programme. The participation trend is highlighted for Carlisle, Cumbria and the North West region.
- To meet Demand Led Funding criteria, Participation comprises the carry over from the previous year plus starts.

Data Analysis

- Carlisle residents' participation decreased 1.4% between 2005/06 & 2007/08
- Cumbria residents' participation decreased 32.2% between 2005/06 & 2007/08
- North West residents' participation increased slightly by 6.5%

E2E Participation by Learner Characteristic



Source: LSC WBL ILR Data 2005,06, 2006/07, 2007/08 Final Period

Produced by NW LSC Data & Research Teams

Data Source

- Work Based Learning ILR data 2005/06, 2006/07 & 2007/08 (Final Period data for each year)

Why This Information has been Used

- To provide a clear view of the 16 to 18 year olds in Carlisle participating on an Entry to Employment Programme. Split by Ethnicity, Disability & disadvantaged compared to the sub-region & North West region.
- To meet Demand Led Funding criteria, Participation comprises the carry over from the previous year plus starts in the relevant year.

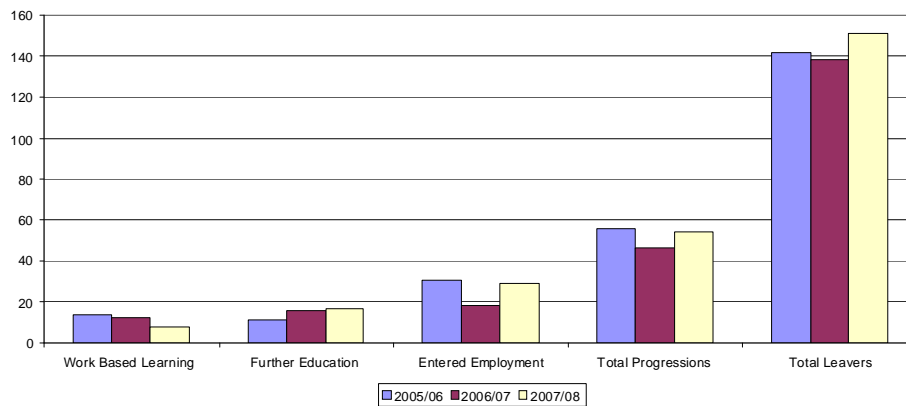
Data Analysis

- BME learners' participation in Carlisle is 7.8 percentage points below the North West region percentage.
- Disabled learners' participation in Carlisle is 1.4 percentage points below the North West region & more than 10 percentage points below Cumbria.
- Disadvantaged learners' participation in Carlisle is 39 percentage points below the North West region & also below the Cumbria region participation percentage of disadvantaged learners.

E2E Progression Outcomes



Entry to Employment 16-18 Progression: Carlisle



Source: LSC WBL ILR Data 2005/06, 2006/07, 2007/08 Final Period

Produced by NW LSC Data & Research Teams

Data Source

- Work Based Learning ILR data 2005/06, 2006/07 & 2007/08 (Final Period data for each year)

Why This Information has been Used

- To analyse the trend of Positive Progressions of learners participating on an Entry to Employment Programme
- Broken down by the Positive progression areas to compare changes in progressions
- Total leavers included to evaluate the success rates for Entry to Employment programmes

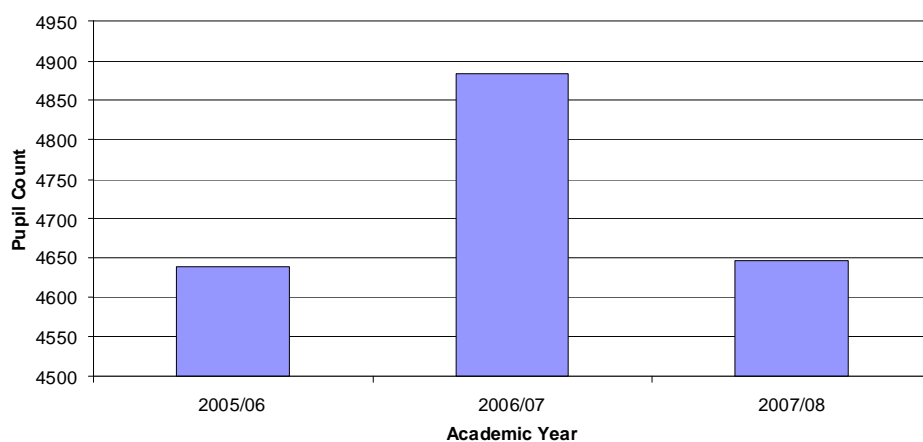
Data Analysis

- 43% decrease in the number of leavers entering Work Based Learning
- 55% increase in the number of leavers entering Further Education
- 6% decrease in the number of leavers entering Employment

Points to Consider

- Overall positive progression rates have decreased from 39% to 36% between 2005/06 & 2007/08

S6F Provider based participation in Cumbria



Source: Schools 6th Form Census Data 2005/06, 2006/07 & 2007/08

Produced by NW LSC Data & Research Teams

Data Source

- Schools 6th Form Census data 2005/06, 2006/07 & 2007/08

Why This Information has been Used

- To show participation in School Sixth forms in the **Cumbria** area

Data Analysis

- School 6th Form learner numbers have **increased by 246 learners in 2006/07 & decreased by 238 learners in 2007/08.**
- The current year figures (2008/09) show **4,510** learners in School Sixth Forms in **Cumbria**, this is an **decrease of 136 learners** since 2007/08.

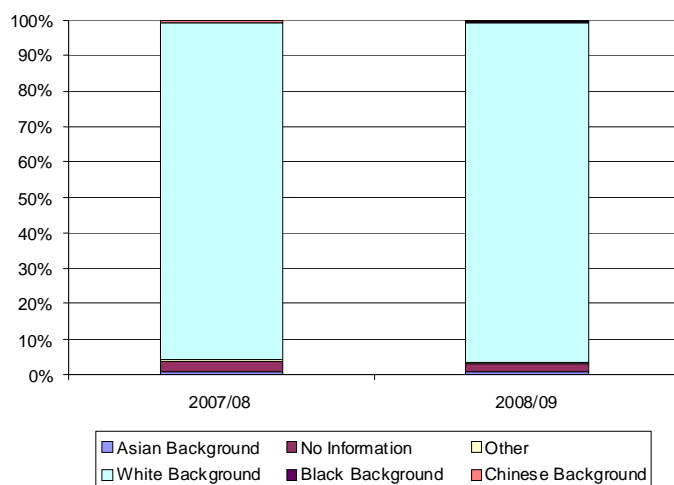
Points to Consider

- The end of academic year 2007/08 saw the **closure/merger** of 4 schools in Cumbria – learners absorbed elsewhere?
- **Cumbria** School Sixth Forms primarily offer a wide range of **GCE A/AS Level** courses & a number of **Level 1, 2 & 3 vocational qualifications.**

Local Data

- Local Authorities may hold extensive information on school 6th Form provision & performance, the information in this section is intended to complement that locally held data.

S6F Participation by Characteristic Cumbria



Source: LSC S6F Data 2007/08 S06 & 2008/09 S02

Produced by NW LSC Data & Research Teams

Data Source

- Schools Sixth Form data 2007/08 & 2008/09 (S06, S02)

Why This Information has been Used

To enable further analysis of the young people attending **Cumbria** School Sixth Forms

Data Analysis

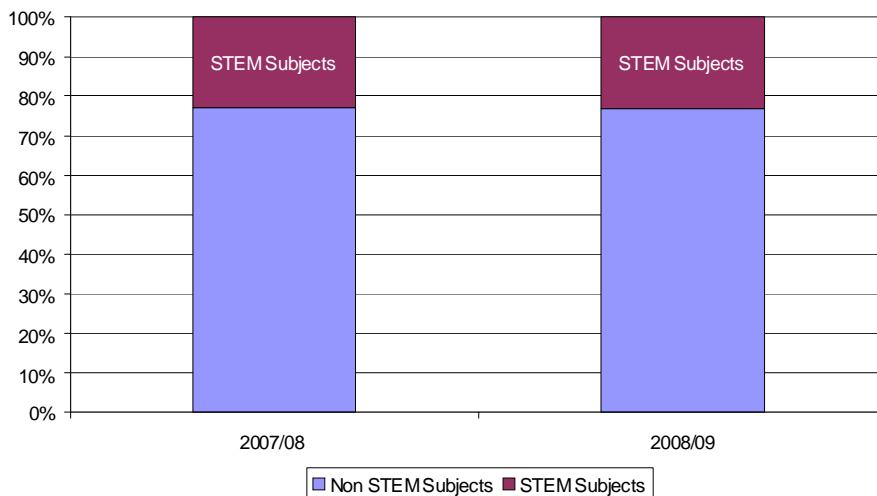
- **5%** of learners in School Sixth Forms in **Cumbria** in 2007/08 were from a minority ethnic group, this **remained the same in 2008/09**.
- The number of learners from **Asian Backgrounds** **increased by 2%** in 2008/09.
- There was a **1% increase in learners from White Backgrounds** in the same period.
- **44%** of learners in School Sixth Forms in **Cumbria** in 2007/08 were Male, this **increased to 45%** in 2008/09.

Points to Consider

- The proportion of learners who are from a minority ethnic group reflective of the local population in **Cumbria**.
- When split by gender there are **45% more females participating than males from White Backgrounds** in 2008/09.
- In contrast there are **100% more females participating than males from Asian Backgrounds** in 2008/09.
- Are young people from disadvantaged backgrounds given sufficient opportunity to succeed through School Sixth Form provision in the area?
- Is the proportion of disabled young people in School Sixth Forms in the area higher or lower than FE institutions?

S6F Participation in STEM Subjects

Cumbria



Source: LSC S6F Data 2007/08 S06 & 2008/09 S02

Produced by NW LSC Data & Research Teams

Data Source

- Schools Sixth Form ILR data 2007/08 & 2008/09 (S06, S02)

Why This Information has been Used

- Increasing participation in Science Technology Engineering & Maths has been identified as a key catalyst for growth in developing industry sectors in England, skilled employees will be in demand in future for these high value added industries. STEM analysis does not include the Social Sciences, they are included with the main body of subjects studied in **Cumbria**.

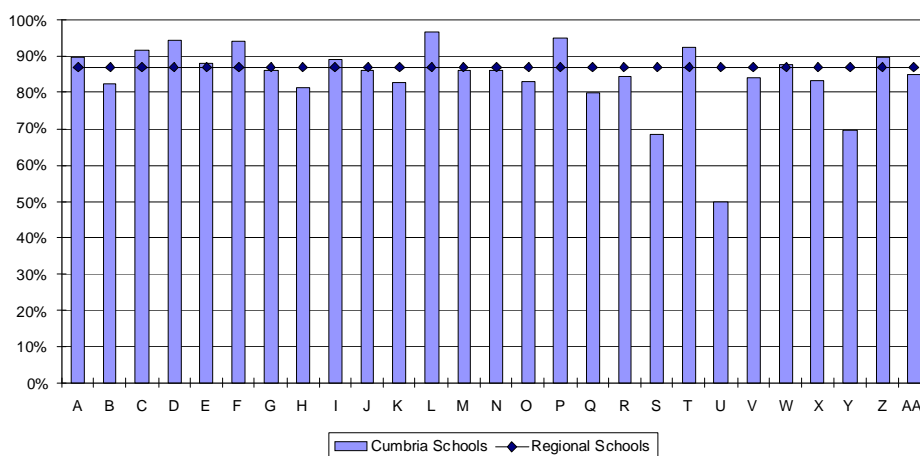
Data Analysis

- Participation in STEM subjects in **Cumbria** has **increased from 5,683 enrolments in 2007/08 to 7547 in 2008/09**.
- Participation in STEM subjects has **increased by 33%** over the last 2 years; however this is **below the regional rate of increase of 53%**.
- STEM subjects make up **23% of total learning aims in 2007/08 & 23% in 2008/08 in Cumbria School Sixth Forms**, this is the **above the regional rate for 2007/08 (21%) & below the regional rate for 2008/09 (24%)**.

Points to Consider

- Could more be done to increase participation in STEM subjects in the area? Or are there examples of good practice that could be shared with the wider sub-regional group?
- The analysis shows that qualifications in **Biology, Chemistry, Mathematics & Physics** have higher volumes of participation than other STEM subjects in **Cumbria**.
- This corresponds with Regional participation patterns for STEM Subjects; **Mathematics, Biology, Chemistry & ICT being the top 4 STEM** Subject areas, & alignment with a key employment sector in Cumbria (Nuclear Industry)
- There has been a marked **increase (58%)** in participation in **Physics** in 2008/09, however this is **below the regional rate of increase of 60%**.
- The main subjects studied by learners in School Sixth forms in **Cumbria** are **Sports Studies, Art & Design, Business Studies & Social Sciences**; this is in alignment with key employment sectors in **Cumbria (Health & Social Work, Wholesale & Retail, Hotels & Restaurants)**

S6F Success Rates Cumbria



Source: LSC Schools Sixth Form ILR data 2007/08 (S06)

Produced by NW LSC Data & Research Teams

Data Source

- Success Rates are derived from the 2007/08 S06 Schools Sixth Form standard file. The success element includes aim types GCE A/AS Level, GCSE, GNVQ/AVCE & International Baccalaureate.
- Year 13 & 14 success element = achieved/starts (Where achieved is outcome achieved & completion status complete). The 2007/08 School Sixth Form success rate = retained rate * year 13 & 14 success element; the Retained rate = $0.5 + 0.5 * (\text{starts} - \text{withdrawals}) / \text{starts}$. Where there are fewer than 20 starts (in both cases) the national rate is used.
- **The letters along the Y axis (A,B,C..) denote the schools in Cumbria in the order they appear in the data sheets.**
- NOTE: At the time of writing LSC data analysts have access to only 2 years' success rates for School Sixth Forms

Why This Information has been Used

To provide information on the quality of School Sixth Form provision in the **Cumbria** area

Data Analysis

- The 2007/08 success rate for School Sixth Forms year 13/14 in **Cumbria is 87%**, this is **equal to the regional average of 87%**
- The average 2007/08 success rate for School Sixth Forms in **Cumbria is 81%**, a decrease of 1% on the 2006/07 Success Rate figure of **82%**.

Points to Consider

- Is a young person more or less likely to succeed in a School Sixth Form in **Cumbria** than elsewhere?
- Is a young person more or less likely to achieve in School Sixth Form provision in **Cumbria** than in other types of training provision available?
- **How wide is the gap in attainment between those who are disadvantaged & those who are not compared to other areas & other types of training provision?**

Local Data

Given that LSC analysts only have access to 2 years comparable success rates for School Sixth Forms, does the Local Authority hold any information that may complement the data used above? That could provide further insight to aid planning.

Skills for Life Enrolments



Leading learning and skills

District Name	Skills for Life type	2005/06	2006/07	2007/08
CARLISLE	Literacy	893	888	892
	Numeracy	881	797	812
	Language	19	*	*
CARLISLE Total		1,793	1,688	1,707

2007/08: FE F05, UFI U05, WBL Period 15, TTG Period 15, ESF SR Period 15, ACL A03
Produced by NW LSC Data & Research Teams

Data Source

2007/08: FE F05, UFI U05, WBL Period 15, TTG Period 15, ESF SR Period 15, ACL A03

Note: Due to data protection, data may not include language enrolments, which are included in the “total” figure

Why this information has been used

To highlight Skills for Life provision being delivered to residents of the local area

Data Analysis

Note: The information here shows aims (enrolments) rather than learner volumes – a learner can undertake multiple learning aims.

In 2007/08:

There were **892** Literacy enrolments, **similar to 2005/06**, compared to the regional decrease of 13.1% over 3 years

There were **812** Numeracy enrolments, **a decrease of 7.8% (-69)** over 3 years, compared to the regional decrease of 14.4%

Learners with Learning Difficulties & / or Disabilities



06

Produced by NW LSC Data & Research Teams

Pupils with SEN in School Sixth Forms (residency based)



Year	Pupils with Statements	School Action	School Action Plus	Area % SEN	Region % SEN	England % SEN
2006/07	22	2	2	8.4%	6.9%	
2007/08	2	2	2	1.5%	4.3%	5.6*
2008/09	3	9	2	3.2%	4%	

Source: PLASC data for 2006/07, 2007/08 & 2008/09 extracted by LSC NW Research Team

* % is for pupils in years 12/13/14, published in http://www.dcsf.gov.uk/rsgateway/DB/SFR/s000794/SFR15_2008_Final.pdf

Produced by NW LSC Data & Research Teams

Data Source

- PLASC Data extracted by LSC

Why this Information has been included

- To quantify the number & share of children in school sixth forms who have special needs
- To identify young people who may be at greater risk of becoming NEET (regional research has demonstrated that young people with LDD make up 1 in 4 of the NEET group; their NEET rate is 25%)

Data Analysis

- The LA area has slightly increasing numbers of children in school sixth forms who are the subjects of Statements of SEN. See the accompanying data pack for each year's cohort of pupils.
- The LA area's share of 16-19 year olds with SEN is lower than the region & lower than England.

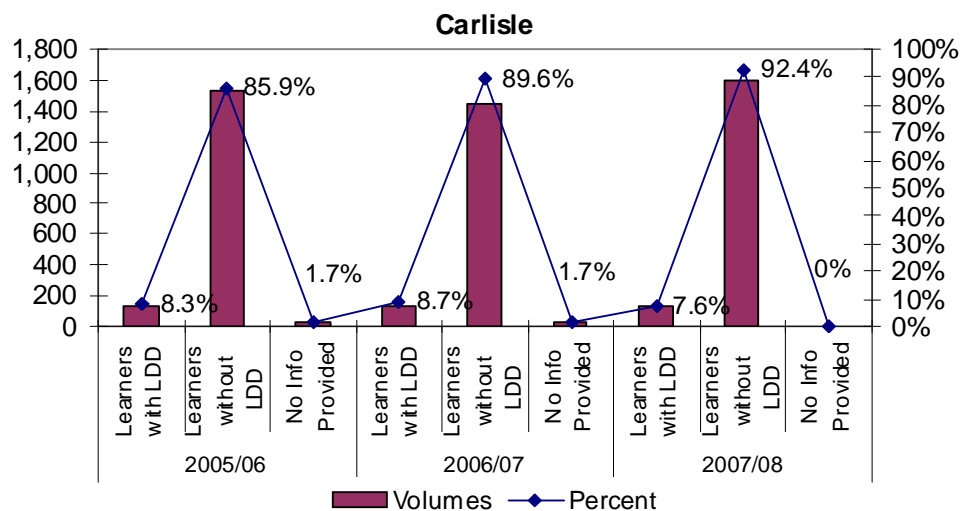
Points to Consider

- National & regional research has identified that the proportion of learners with learning difficulties and/or disabilities is increasing year on year. Government policy is for more of those young learners to participate in mainstream provision, rather than to enter specialist and/or residential provision.
- The regional post-16 learning participation rate for young people with LDD aged 16-18 was estimated at 52.2% in research conducted in 2007, compared to 74.5 per cent for those without LDD. The participation rate for learners with LDD aged 19-25 was 8%, compared to 18%.

Participation by Learners with LDD (residency based)



Leading learning and skills



Source: ILRf05 05/06, 06/07, 07/08. Includes FE, Apprenticeship, and Employment. Produced by LSC Data & Research Teams

Data Source

- Data from individual learner records (ILR), based on the residency of the learner.
- The individualised learning record (ILR) records the learning difficulties/disabilities/health status of learners based on their own self-assessment. The ILR field L14 provides for one of three entries to be made for each learner:
 - 1 Learner considers himself or herself to have a learning difficulty &/or disability &/or health problem
 - 2 Learner does not consider himself or herself to have a learning difficulty &/or disability &/or health problem
 - 9 No information provided by the learner
- It is recognised that many learners for whom information is recorded in this field will not be able to identify themselves as having learning difficulties. This information will be recorded as a result of interviews with learners, their parents, guardians, teachers or advocates.

Why this information has been included

- To identify district participation rates for learners with learning difficulties and/or disabilities & compare them with the regional picture

Data Analysis

- The proportion of Learners with Learning Difficulties and/or Disabilities engaged in learning in Carlisle is not in line with that found in the North West area. (14.2 percent in 2007/08).
- Participation in Apprenticeship is increasing.
- Participation in Entry to Employment is increasing.
- Proportion of LDD students attending FE colleges is below the regional average (14.6% in 2007/08).

Points to Consider

- Is there an annual assessment of the learning needs of those with LDD? If there is, does it identify issues with any particular learning route?
- Needs to be considered alongside success rates for learners with learning difficulties and/or disabilities
- Is the mix of learning difficulties significantly different from the regional picture?

Learners in Independent Specialist Residential Colleges*



Learner LA	2006/2007			2007/2008			2008/2009		
	No of Learners	Total Placement Funding	Total 3rd Party	No of Learners	Total Placement Funding	Total 3rd Party	No of Learners	Total Placement Funding	Total 3rd Party
Cumbria	9	£518,803	£0	10	£671,422	£0	7	£426,141	£0
Unit cost per LA learner	£57,644			£67,142			£60,877		
Unit cost per NW learner	£46,589			£55,028			£55,123 (15% increase from 2006/07)		
Regional 3rd party contributions	£525,272			£587,931			£617,265		

* Residency based data from ISP database

Produced by NW LSC Data & Research Teams

Data Source

- Data from ISP database. Based on residency of the learner.

Why this information has been included

- To identify trends in the numbers of learners with learning difficulties and/or disabilities who have profound & complex needs and who require specialist provision

Data Analysis

- The number of learners in the area with learning difficulties and/or disabilities who have profound & complex needs is decreasing.
- The cost of supporting learners in this provision is decreasing.
- The area trend is different from the regional trend below.
- The unit cost of supporting these learners is higher than the regional unit cost.

Points to Consider

- Whilst participation in mainstream provision is increasing, the number of placements regionally at Independent Specialist Provision (ISP) has remained relatively stable at around 460 between 2005/06 & 2007/08 & then reduced in 2008/09 to 429. However, increasing unit costs mean that the funding requirement has not been reduced.
- Does the area trend reflect regional trends? If not, why not?
- Is there a robust approach to challenging requests for specialist provision that ensures this provision is only available to those who will benefit the most?
- Are there third party contributions (usually from local authorities to cover the Care component of the placement)? If not, why not?

Attainment by Age 19



Leading learning and skills

07

Produced by NW LSC Data & Research Teams

Proportion reaching Level 2 Threshold by Age 19 by Area



Cumbria	2004	2005	2006	2007	2008	2004 to 2008 % Difference
England	66.4%	69.3%	71.4%	73.9%	76.7%	10.3%
North West	63.8%	67.3%	70.1%	72.4%	74.3%	10.5%
Cumbria (LA)	66.4%	69.9%	71.0%	72.9%	74.5%	8.1%

Source: Fisher Family Trust

Produced by NW LSC Data & Research Teams

Please note that the 2008 data has now been added to this slide, but the data analysis below refers to the data for 2004 to 2007.

Data Source

- The national, regional & local figures can be sourced to the Fisher Family Trust matched administrative dataset for 2006/07 (Obtained from the DCSF Research & Statistics Gateway).

Why This Information has been used

- Attainment of a level 2 qualification by age 19 is a key measure of success achieved by the resident young people of an area. Information on progress compared to regional, national, & other statistical benchmarks is essential to inform planning.

Data Analysis

- 72.9% of young people in Cumbria achieved a level 2 by age 19 in 2007. This has increased by 6.5% points since 2004, & this increase is 2.1 percentage points below the regional average.
- Cumbria is 1.1% points above its statistical neighbours in 2007, the gap has narrowed since 2004.
- The achievement gap in 2007 between those who were eligible for free school meals & those who were not was 30% points.
- The rate of increase between attainment at 16 & attainment at 19 is 17.8% points, this is a lower rate of value added than the regional rate.

Points to Consider

- The gap in attainment between those who are eligible for Free School Meals & those who aren't could be an area for further focus in this area – could increased collaborative working with schools help to increase attainment of all groups?
- The national PSA target is potentially very challenging for some LA areas to achieve, how is this viewed in the LA area? Do local targets reflect the national aspiration?

Local Data

- Local colleagues in some areas have identified that there are discrepancies in the different level 2 attainment datasets available to analysts – how can these be used to give a more accurate picture of the locality? – Whilst bearing in mind that the LA is being measured nationally on the data set used in this analysis.

Proportion reaching Level 3 Threshold by Age 19 by Area



Cumbria	2004	2005	2006	2007	2008	2004 to 2008 % Difference
England	42.0%	45.4%	46.6%	48.0%	49.8%	7.8%
North West	38.5%	42.0%	42.9%	44.6%	46.1%	7.6%
Cumbria (LA)	39.9%	44.3%	45.1%	45.9%	48.0%	8.1%

Source: Fisher Family Trust

Produced by NW LSC Data & Research Teams

Please note that the 2008 data has now been added to this slide, but the data analysis below refers to the data for 2004 to 2007.

Data Source

- As with the Level 2 by Age 19 statistics, the national, regional & local figures can be sourced to the Fisher Family Trust matched administrative dataset for 2006/07. (Obtained from the DCSF Research & Statistics Gateway)

Why This Information has been used

- Further to the reasons stated for the use of Level 2 attainment by age 19 statistics, this information is used here as a further key measure of progress.
- As well as being widely viewed as a gateway to higher education, it has been identified that an increasing proportion of employment opportunities in future will require at least a level 3 qualification.

Data Analysis

- 45.9% of young people in Cumbria achieved a level 3 by age 19 in 2007.
- This has increased by 6.0% points since 2004 & is the same as the regional average.
- Cumbria is 1.1% points above its statistical neighbours in 2007, the gap has narrowed since 2004.
- The attainment gap in 2007 between those who were eligible for free school meals & those who were not was 31% points.
- The proportion attaining level 3 by age 19 is 2.1% points below the national rate.

Points to Consider

- Rates of progression to HE are affected strongly by the level of attainment of level 3 – does this have implications for partnership working between schools, post 16 providers & IAG / Connexions services in Cumbria?
- Do the statistics show any trends that could imply that young people from deprived backgrounds are significantly disadvantaged in Cumbria – if so are any actions in place to address this?