

Cumbria Local Authority Area  
Analysis of 14-19 Education & Training  
Provision

Date

Presented to  
By

# Welcome

*Produced by NW LSC Data & Research Teams*

# Notes



- Please use this analysis alongside the accompanying data set
- Volumes of Learners, cohort etc are based on Residency unless stated
- Please see the speakers notes for benchmarks with Regional & National statistics where possible
- National data sets have been used where appropriate to ensure consistency – these can be complemented with local data where necessary

*Produced by NW LSC Data & Research Teams*

# Contents



## Key issues & priorities

- Policy Context
- Facts & Figures
- Cohort Activity
- Learner Analysis by Route
- Learners with Learning Difficulties & / or Disabilities
- Attainment by Age 19

*Produced by NW LSC Data & Research Teams*

# Key Issues & Priorities



Leading learning and skills

# 01

*Produced by NW LSC Data & Research Teams*

# Issues & Priorities



- Improvement at L2@19
- Improvement at L3 @19
- Below average take-up by LLD/D in learning
- Further investigation of lower than average take-up of EMA
- Greater involvement of 16-18 year olds in STEM subjects
- Greater participation of young women in apprenticeships

*Produced by NW LSC Data & Research Teams*

# Policy Context



Leading learning and skills

# 02

*Produced by NW LSC Data & Research Teams*

# 14-19 Reform Next Steps



**'Our starting point is the concept of a 14-19 entitlement for all young people to the right learning opportunities, & the right support'**

- A high quality learning route for every young person that enables them to participate, achieve & progress
- The support to integrate all services for young people so that they can make the most of their opportunities & choices
- Stronger local partnerships & consortia arrangements
- Establishing the right delivery arrangements at a local, regional & national level.

*Produced by NW LSC Data & Research Teams*

*Delivering 14-19 Reform: Next Steps* was published in October 2008. In delivering the 14-19 entitlement, the document lays out four priorities:

#### **A high quality learning route:**

- Skills that everyone needs & values
- A clear, streamlined system with choices that all lead to progression
- Personalised teaching & learning on every route

#### **The right support:**

- IAG – having the right support to choose
- Knowing what is on offer
- Support to learn
- Additional personal support

#### **Strengthening local partnerships:**

- Developing the workforce
- Student voice
- Importance of employers & HE as local partners
- The role of 14-19 partnerships

#### **The right delivery arrangements:**

- Local authorities as strategic leaders of 14-19 reform
- Sub regional groupings & the YPLA
- *From here to entitlement* is a self-assessment toolkit for 14-19 partnerships. The toolkit aims to describe what a good 14-19 partnership looks like, to point colleagues in the direction of useful resources & to provide a basis for future action.

# 14-19 Reform



## •Raising the Participation Age

*'Raising the participation age challenges all of us responsible for young people's futures to raise our game.'*

## •Learning Routes

*'Every young person should have the opportunity to engage in learning that will enable them to participate, achieve & progress'*

– Apprenticeships, Diplomas, Foundation Learning Tier, General qualifications

## • Impartial Advice & Guidance

*'Critical to making the right choices is high quality & impartial IAG'*

- September Guarantee
- 14-19 Online Prospectuses
- Common Application Processes

*Produced by NW LSC Data & Research Teams*

## Raising the Participation Age

The Education & Skills Act sets out plans to raise the education participation age to 17 by 2013 & 18 by 2015.

- Currently, 77% of NW 17 year olds participate in full-time & part-time education & WBL (DCSF 2006 Participation in education & work based learning (WBL) of 16 & 17 year olds)

The children that started yr 7 in September 2008 will be the first to stay in education & training

## Learning Routes

- *Promoting achievement, valuing success: a strategy for 14-19 qualifications* sets out a streamlined set of qualifications that young people, parents, employers & HE recognise & value:

**Apprenticeships:** an entitlement to a place by 2013 for all 16 year olds suitably qualified

- The Government anticipates that around one in five of all young people will be undertaking an Apprenticeship by 2020 before the academic year in which they turn 18 – *currently 1 in 10 in the NW* (DCSF 2006 Participation in education & WBL of 16 & 17 year olds)

**Diplomas:** need to ensure sufficient supply through a phased build up to meet the national entitlement in 2013 for all 14-16 year olds to the first 14 Diplomas; & for 16-18 year olds to all 17 Diplomas

**FLT:** introduced to provide accredited qualifications for young people working at entry level & level 1 to prepare them fully for level 2:

**General qualifications** – GCSEs, A levels

Young People will be able to choose from any of the 4 routes. There will also be opportunities for personalised learning that will enable young people to progress into one of these 4 routes

## IAG

- September Guarantee in 2007 = 91.5% in NW, increased to 94.7% in 2008 with extension to 17yo at 76.9%.
- Action Plan for the 14-19 Prospectus & Common Application Process published April 2009 sets out the ambition to 2013 for the further development of the 14-19 Prospectus & implementation of the Common Application Process.

# LSC Business Cycle and Strategic Analysis



## Background & Introduction

- LSC Business Cycle Overview
- The Role of Strategic Analysis
- Issues for commissioning & progress in addressing priorities

*Produced by NW LSC Data & Research Teams*

### What does the Cycle do?

- Acts to translate national, regional & local priorities, into funding & places to meet needs
- Relies on complex national, regional local interactions & dependencies internally to the LSC & externally with delivery partners
- Process is processional but iterative

### What are the key roles & responsibilities?

- National: determines priorities, budget lines, funding policy
- Regional: produces strategic analysis, commissioning priorities, models & moderates budgets & provider allocations, procures through OCT
- Local: Reviews provider performance, identifies needs, demands & gaps, commissions through negotiation, identifies gaps for OCT & agrees allocations

### Issues & Challenges

- Timescales are derived & driven nationally
- In year performance picture is partial e.g. MLP
- Lack of full year picture of delivery e.g. participation & achievements
- Matching & defining need & actual delivery
- Iterations from indicative to final allocations
- Communication within multiple layers & relationships

# Facts & Figures

>lsc

Leading learning and skills

# 03

*Produced by NW LSC Data & Research Teams*

# Overview of Cumbria LA



- Population Aged 16-59/64 is 296,779
- Age 16-18 is 6.7% of the Working Age population
- 50,800 Working Age are economically inactive
- 80.4% are employed
- 72.2% of 19-59/64 are qualified to Level 2 & above.
- Largest Sectors of Employment are Wholesale & Retail & Manufacturing.

*Produced by NW LSC Data & Research Teams*

## Data Source

- ONS mid-year population estimates 2007
- Census 2001
- Annual Population Survey July 2007 to June 2008
- Annual Business Inquiry 2007

## Why This information Has been Used

- To provide an overview, setting the 14-19 education & training information in the local area context.

## Data Analysis

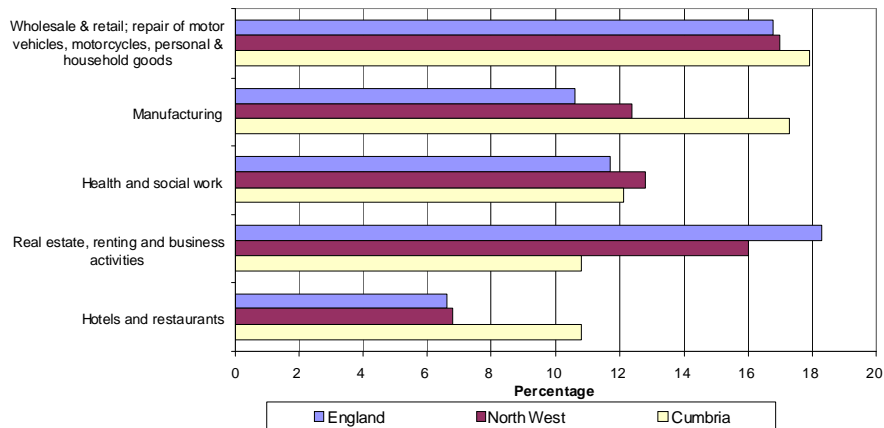
- Note the differences on this slide in the definition of working age – this is due to PSA / LAA targets
- 16-18 Population is proportionally **is same** as the regional average
- 17.2% are economically inactive, this is **lower** than the regional rate
- **72.2%** qualified to Level 2 or above is **4.5% points below** the regional rate
- High Employment in **Wholesale & Retail** is **above** the regional picture

## Points to Consider

Are working age qualifications attainment levels reflected in success rates of the young people resident in the area?

Is training provision, within the demand led context, aligned to local industry sectors that employ the most people?

## Top 5 Sectors of Employment Cumbria



Source: ABI Employee Analysis, ONS Crown Copyright Reserved

Produced by NW LSC Data & Research Teams

### Data Source

Annual Business Inquiry (ABI) 2007; Employee Volumes expressed as a % of area total.

### Why This Information has been Used

This data, alongside other employment information, can build a picture of the alignment of education & training provision in a demand led system

### Data Analysis

- Highest employment volumes in Cumbria: **Wholesale & Retail Trade (38,900 employed)**, **17.9%** of area total. **Above** the North West (17%), & **similar** to the England (16.8%) proportions.
- Second highest: **Manufacturing (37,700 employed)**, 17.3% of area total. **Above** the North West (12.4%) & England (10.6%).
- **Higher than NW & England: Hotel & Restaurants**, in Cumbria = **10.8%** (23,500 employed) compared to the North West (**6.8%**) & England (**6.6%**).
- Highest volume increase in employment between 2006 & 2007: **Manufacturing +1,900 jobs** (to **37,700**) in 2007,) 5.3 per cent rise.
- Largest volume decrease in: **Hotel & Restaurants -1,200 to 23,500** in 2007 (**-4.9%**).
- **Construction: -1,000 jobs to 11,700** in 2007 (**-7.9%**).

### Points to Consider

- The full impact of the recession is yet to be seen
- What are the implications for education & training provision planning of the reduction in
- employment in **Hotel & Restaurants & Manufacturing**.
- How aligned to this picture of employment is current education & training provision in the area? – is there a difference in the alignment of FE & WBL?

### Local Data

- Local employment data & intelligence, will help to inform the information shown here
- Up to date redundancy data could complement the sectoral employment information in the slide

# Young Apprenticeships & Key Stage 4 Engagement Programme



## Young Apprenticeships

**174 contracted traditional YA places in Cohort 5, across 6 sectors.**

**137 commissioned places for Cohort 6 across 5 sectors.**

## Key Stage 4 Engagement Programme

**320 places contracted in Phase 3 (2008/09) with a slight decrease to 297 places commissioned in Phase 4 (2009/10).**

*Produced by NW LSC Data & Research Teams*

## Cumbria: Young Apprenticeships

### Data Source

- The data is taken from the Young Apprenticeship contracts & learner returns which are submitted to the LSC as per the contractual agreement.

### Why this information has been used

- Young Apprenticeship Programme is a distinctive offer to those who would benefit from an occupationally specific & work-based learning route leading to a level 2 qualification by 16, the programme is aimed at able students. Young Apprenticeships (YA) were introduced as a pilot scheme in 2004, & the fifth cohort of the programme saw the introduction of Young Apprenticeships with Diplomas, incorporating components from the diploma within the YA qualification.
- Year on year there has been demand for growth; however this has been limited by budget constraints, with demand often exceeding the amount which we can contract for. In cohort 6 the allocation of volumes is based on the 14-16 population size, this was previously provider based. The LSC is currently working with Local Authorities (LAs) to contract for the sixth cohort of learners.

### Data Analysis

- In Cohort 6 Cumbria has commissioned places in the following sectors: Construction (13), Engineering (41), Motor Vehicle (26), Performing Arts (26) & Sports Leadership (31).

## Key Stage 4 Programme

### Data Source

- The data is taken from the Key Stage 4 contracts & data returns which are submitted to the LSC on a termly basis.

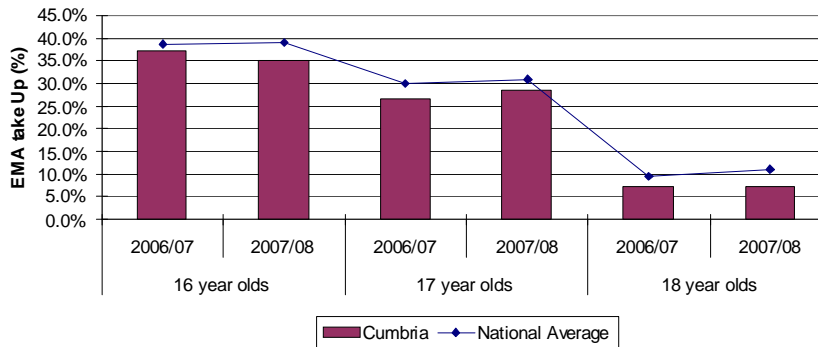
### Why this information has been used

- Key Stage 4 Engagement Programme is aimed at maximising participation & achievement of young people who show a lack of interest in education, & who would be motivated by a strong work focused route & a different learning environment. The North West has been running pilots since 2006 & is currently in the process of awarding a fourth year of funding for 2009 start, which is being offered in all LAs.

# Cumbria EMA Take-up



EMA take up in 2006/07 and 2007/08 by Age



Source: DCSF website

Produced by NW LSC Data & Research Teams

## Education Maintenance Allowance (EMA)

### Data Source

- The Source of data used is the Learner Support Management Information; this data is Local Authority & Sub National EMA take up in 2008 based on the 16-18 population size (historically based on estimated eligibility of population). This is the latest available data at the time of writing.

### Why this information has been used

- EMA supports learners from low income household to continue in learning & is an important tool in increasing post-compulsory education, as well as decreasing the number of young people not in education, employment or training (NEET).

### Data Analysis

- In 2008 4,697 young people took up EMA, growth of 0.7% from the previous year, increasing at a slower rate than regionally (+4.6%).
- The EMA policy team promote early take up in order to demonstrate positive behaviour associated with receipt of EMA. Early take up is above the regional average, at 60.2% by the end of September.
- 35% of 16 year olds have taken up EMA, below the regional average (44%)
- 28% of 17 year olds have taken up EMA, below the regional average (36%)
- 7% of 18 year olds have taken up EMA, below the regional average (12%), & is the lowest proportionate take up in the North West.

# Diplomas



Cumbria LA	2008/09					2009/10					2010/11					2011/12 if conditions met				
	West Cumbria	Furness	Eden	South Lakes	Carlisle	West Cumbria	Furness	Eden	South Lakes	Carlisle	West Cumbria	Furness	Eden	South Lakes	Carlisle	West Cumbria	Furness	Eden	South Lakes	Carlisle
Construction & the Built	Approved									Conditions Met										
Creative & Media	Approved																			
Engineering	Approved					Conditions Met				Approved										
Information Technology	Approved																			
Society, Health & Development	Approved																			Conditions Met
Business Administration & Finance										Approved										
Hair & Beauty																				
Hospitality																				
Environmental & Land Based																				
Manufacturing & Product Design																				
Public Services																				
Retail Business																				Subject to conditions
Sport & Active Leisure										Approved										
Travel & Tourism										Approved										

Produced by NW LSC Data & Research Teams

## Cumbria LA: Diplomas

- Please note: Local Authorities are likely to hold more up to date information

## Data Source

- Data has been taken from the DCSF website (www.dcsf.gov.uk) & is the latest information available at time of publication.

## Why Information has been used

- Diplomas give students a fully rounded education, combining theoretical & practical learning to equip them for further or higher education & long-term employability. Diplomas will be available as a national entitlement from 2013 in the first fourteen lines for 14-16 year olds, & 17 lines for 16-18 year olds.

## Data Analysis

- Cumbria LA has been approved to deliver 13 of the 14 Diploma Lines.
- Cumbria has not yet been approved to deliver Retail Business Diploma Lines.
- Further breakdown by district area can be found on the relevant slides

# September Guarantee



	Yr 11 Guarantee (Age 16) (%)				Yr 12 Guarantee (Age 17) (%)			
	Offer Made	Not ready for learning	No offer made	Not recorded	Offer Made	Not ready for learning	No offer made	Not recorded
<b>Cumbria LA</b>	93.6	4.9	1.5	0.0	78.1	17.8	4.0	0.0
<b>Regional Offer</b>	94.7	2.5	2.5	0.2	76.9	12.7	9.6	0.8
<b>National Offer</b>	94.2	2.9	2.7	0.2	79.7	9.6	7.2	3.4

Source: NCCIS Final SG Report 2008/09 (11.12.08)

*Produced by NW LSC Data & Research Teams*

## Data Source

- The Source of the cohort data used is NCCIS (National Client Caseload Information Service) – cut off date is 11th December 2008.

## Why This Information has been Used

- To monitor priorities around reduction of NEET & increasing participation for 16-18 year olds.

### 16 Year Olds

- Between 2007 & 2008, Cumbria has significantly increased offers by 6.4%, from 87.2% to 93.6%. Although this is closing the gap on National performance (which increased by 3.3%), Cumbria remains below National (94.2%) & is the lowest performing sub region in the NW.
- Cumbria has significantly lower figures for no offer made at 1.5%, comparatively; the National average is 1.2% higher (2.7%). This equates to 100 learners from a cohort of 6,696.
- As a LA, Cumbria has the highest proportion of learners not ready for formal learning in the NW. The NW average is 2.5% & National figures are 2.9%, however Cumbria is notably higher at 4.9%.
- Of the total not ready for formal learning, 12.7% is due to personal circumstances. Lower than national levels of 18.9% & NW of 24.3%.

### 17 Year Olds

- Offers made (78.1%) are above NW figures (76.9%) but below national (79.7%)
- Those not ready to enter formal learning at 17.8%, is significantly higher than the NW average of 12.7%. When comparing this to the National average of 9.6%, Cumbria is almost double & equates to 278 learners.
- Comparatively, Cumbria has delivered high results for no offer made; 4% is one of the lower LAs in the region. This is at 63 learners from a possible 1559. As the NW average is 9.6%, Cumbria has exceeded delivery.

# Care to Learn



- 16% of teenage mothers in Cumbria had taken up Care to Learn funding at August 2008, below the North West average (21%)
- By January in 2009 the take up rate of the scheme had decreased to 14%, below the North West average (18%)

*Produced by NW LSC Data & Research Teams*

## **Data Source**

- The data shows Care to Learn (C2L) take-up against the eligible cohort. The take up is based on the live births of mothers aged under 20 & is adjusted for movement into & out of the area. The data is taken from the LSC intranet.

## **Why this information has been used**

- C2L supports young parents who are following any form of publicly-funded learning with the intention that it may lead to progression on to further achievement.

## **Data Analysis**

- Take up in the North West region is above the national average which is 16% in August 2008 & 13% in January 2009

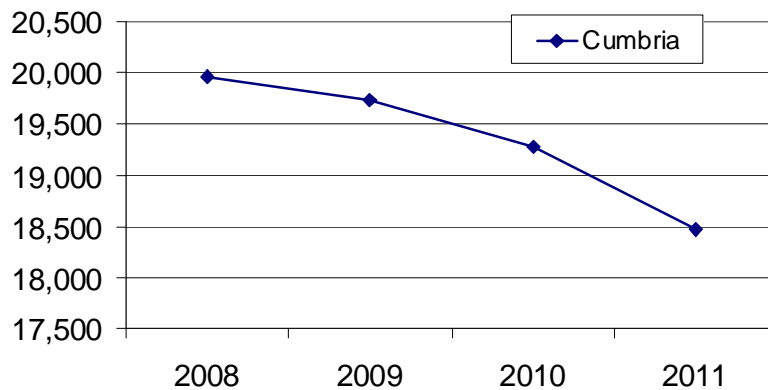
## **Points to consider**

- The C2L data is based on the 2005 live birth rates- however the latest conception rates data shows there has been a decrease in teenage conception rates across the North West since 2005, & therefore teenage live births will also have decreased further than the C2L data suggests.
- Is the high take up of the scheme a positive or negative thing?
  - A high take up suggests that there is good IAG & effective support in place to encourage teenage mothers back into learning.
  - However, high birth rates suggest that teenage pregnancy is an issue & further work is required to raise teenagers' aspirations.

# 16-18 Cohort



16-18 Cohort in Cumbria 2008 to 2011



Source: ONS Sub-national Population Projections based on 2006 mid-year estimates

Produced by NW LSC Data & Research Teams

## Data Source

- The Source of the cohort data used is the Office For National Statistics, this data is Sub-national Population Projections based on the 2006 mid-year Population Estimates – This is the latest available **forecast** data at the time of writing.

## Why This Information has been Used

- This slide has been added to highlight the current & forecast size of the 16-18 cohort in the local area, important to inform decisions on commissioning of provision for residents of the area, as well as addressing NEET, & informing discussions with key partners.
- The LSC recognises that there are variations between different sources of cohort data, the dataset used here is used nationally to allocate budgets & to set & monitor targets, locally informed cohort data can be very useful to complement this dataset.

## Data Analysis

- In 2008 the 16-18 cohort in Cumbria was 19,964
- By 2011 it is forecast to fall to 18,475 (-1,489) which is a reduction of 7.5%
- North West = -8.1%
- England = -5.3%

## Points to Consider

- What are the implications for this reduction on the volumes of provision commissioned for Cumbria's resident young people?
- For example: Mix & Balance, with smaller learner volumes are institutions able to offer a full breadth of curriculum?
- When placed alongside the travel to learn analysis shown later does the reduction of 1,489 young people have significant implications for discussions with other local areas?

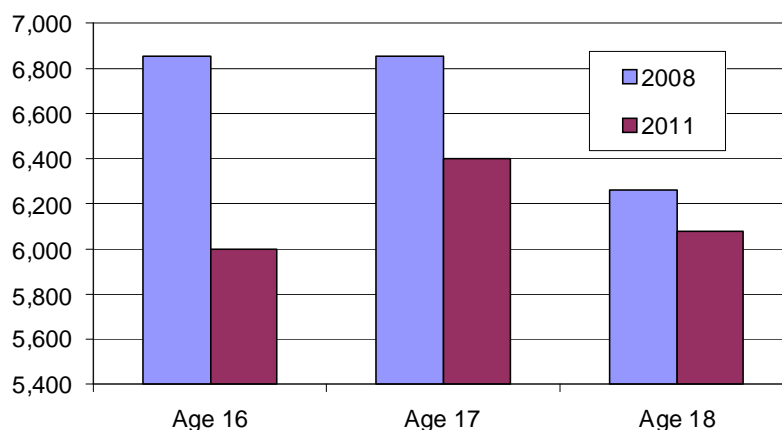
## Local Data

- If there are significant differences between the national data set used here & local cohort information – what impact will this have on planning & resource allocation?

# 16-18 Cohort (2)



Cumbria LA Cohort Forecasts 2008 to 2011



Source: ONS Sub-national Population Projections based on 2006 mid-year estimates

Produced by NW LSC Data & Research Teams

## Data Source

- ONS – Sub-national Population Projections based on the 2006 mid year population estimates. – the latest available **forecast** data at the time of writing

## Why This Information has been Used

- This slide has been included to demonstrate where the reductions in the 16-18 cohort of the area are concentrated – the specific age of the cohort can effect decisions on actions taken around provision, NEET, & delivering the September Guarantee.

## Data Analysis

- In Cumbria in 2008 the 16-18 cohort comprises: 6,851 age 16, 6,855 age 17 & 6,258 age 18
- The volume of those aged 16 is forecast to have the highest reduction by 2011 (-850 or -12.4%).
- The volume of 17 year olds is expected to reduce by 458.

## Points to Consider

- What are the implications on the planning of post-16 education & training provision in Cumbria of the large reduction in the number of 16 year olds?
- Regionally, the NEET rate is higher for those aged 17 than those aged 16 – what are the implications for NEET strategy in the area in light of the large reduction of 17 year olds in 2011? Does this enable greater targeting within the NEET group?
- The September Guarantee was extended to 17 year olds in 2008 to give those who had enrolled on 1 year or short courses, or who had left their previous activity, a further opportunity to participate. This means that all young people who reached the statutory school leaving age in 2008 or 2009 are entitled to an offer under the Guarantee in 2009. Local authorities are responsible for ensuring that the Guarantee is met. Combined analysis of the data above & what proportion of the cohort are on 1 year short courses may be necessary.

## Local Data

- As with the previous slide, local cohort information broken down by single age may show discrepancies when compared to the national data set – what are the implications of this? How can this be reconciled to deliver sound planning of training provision for young people resident in the local area?

# Cohort Activity

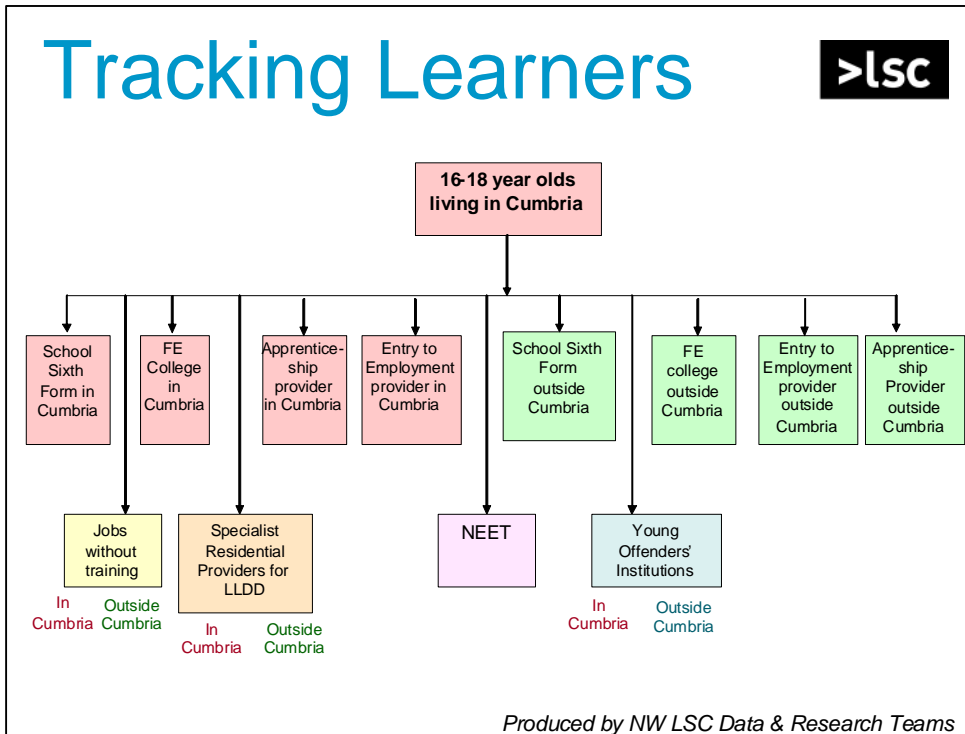


Leading learning and skills

# 04

*Produced by NW LSC Data & Research Teams*

# Tracking Learners

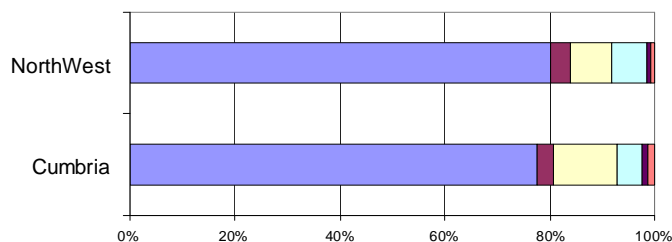


- After the MoG changes are enacted, Cumbria County Council will take responsibility for planning & funding learning opportunities for the cohort of 16-18 year olds resident in Cumbria. This cohort of young people will make decisions not only about what type of learning they want to enter – whether it be academic A levels in a school sixth form, vocational learning in an FE college or a work based opportunity via an Apprenticeship – but also about which organisation they will learn with. Some of these providers will be based within the Cumbria boundary, others will not.
- It will be necessary to track the progress of all these young people to ensure they have taken up learning which maximises their chances of success. This will mean that the LA has to have effective working relationships with all of the providers who support young Cumbria residents.
- Those who do not take up a learning opportunity – NEETs & those who enter jobs without training – may later return to learning.
- Those who do may not stay in learning, but leave to take up work. This age group is mobile & without economic constraints like mortgages.

# Year 11 School Leaver Destinations



Year 11 School Leaver Destinations



	Cumbria	NorthWest
No response	1.3%	0.8%
Moved out of contact	1.2%	0.8%
Not Settled in a Full time Activity	4.7%	6.7%
Full Time Employment	12.0%	7.9%
Full Time Training (non emp)	3.1%	3.7%
Within full time education	77.7%	80.2%

Source: Connexions Activity Survey 2008

Produced by NW LSC Data & Research Teams

## Data Source

- The source of the data is the Connexions Services Activity Survey 2008, in particular the Year 11 School Leaver Destinations table. The national survey has not yet (as of 30/3/09) been published but the Local Authority level figures have been obtained from the relevant Connexions services.

## Why This Information has been used

- This information on school leaver destinations gives a holistic picture of all young people's activity & as such adds to the LSC's own learner data. It is used as an indicator to help plan commissioning & is a key indicator of potential NEET Young People as well as informing the performance of the September Guarantee offer.

## Data Analysis

- 80.8%** of young people in **Cumbria** have moved on to full time education or full-time training (not including those receiving training whilst in employment). This is **below** the regional average but the percentage has **increased** since the previous year 2007.
- 12.0%** of young people have moved on to full time employment. This is **above** the regional average.
- 4.7%** of young people are not settled into a full time activity. This is **below** the regional average & the percentage has **decreased** since the previous year 2007.

## Points to Consider

- How does the percentage for Not Settled in a Full Time Activity compare to the percentage that have not received an offer under the September Guarantee. Could the September Guarantee performance reduce further those Not Settled?
- How does the percentage for Not Settled in a Full Time Activity compare to the percentage showing as NEET.

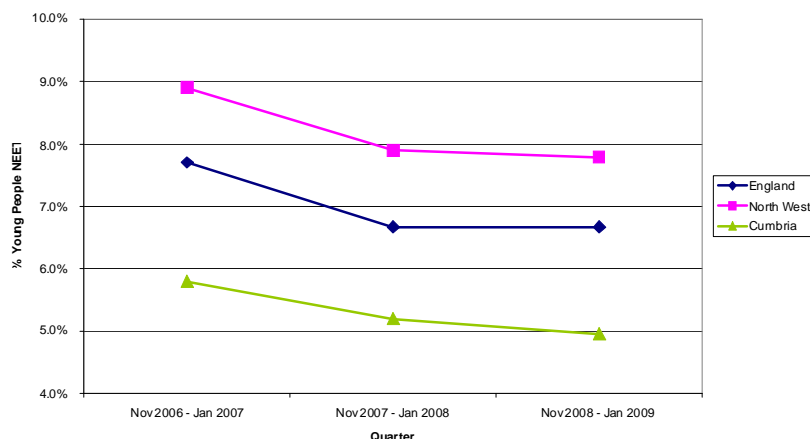
## Local Data

- Comparison between this Destination data & NEET data: The part time employment & learning categories which are part of "Not settled – Active" in this Activity Survey would normally be reported in the Learning or Employment EET figures for NEET reporting. Hence some Connexions organisations when they publish this data in their local 'Moving On' report will use NEET categorisation instead.

# Not in Education Employment or Training Headline Figures



Annual NEET Using DCSF Version of NCCIS



Source: DCSF NCCIS

Produced by NW LSC Data & Research Teams

## Data Source

- NEET figures collated by DCSF on behalf of Connexions services. This version is known as the NCCIS version & looks at destinations of young people. The percentages shown are the adjusted NEET where the NEET figure includes an estimate of how many of those recorded as Not Known are actually NEET

## Why This Information has been used

- NEET is a key indicator of potential to engage with learning & as such provides a context for Commissioning
- This 3 month period of November to January is the period chosen to make annual comparisons for this NCCIS version of NEET, for example when setting Local Area Agreement targets. Although it is not the version of NEET that the UK wide PSA target 14 is set against, this version of NEET has advantages in that it is available at Local Authority (LA) level & is updated monthly as opposed to annually. It is known as Performance Indicator 117. This is the version of NEET that the LSC uses nationally

## Data Analysis

- 5.0%** of young people in Cumbria were NEET in the latest annual comparison period available, November 2008 – January 2009
- This has **decreased** by **0.8%** points since the first period November 2006 -January 2007, & is now **2.8%** points **below** the regional average
- Cumbria** trend of NEET is **slightly deteriorating** in comparison with the Northwest & Nationally

## Points to Consider

- Are there examples of good practice in addressing NEET that could have contributed towards this improved performance & can they be shared with other LAs?
- What issues have contributed towards this improving NEET situation, & have measures been taken to reinforce these ?
- Has the economic downturn influenced these figures or are other factors more important?
- How does this compare to the National PSA target which is 7.0% for 2010? (Target taken from NCCIS NEET Tables, indicative 2010 target)

## Local Data

- Some Connexions services prefer to use a different measure of NEET using the same NCCIS data. What is shown here is the DCSF preferred measure which allocates the young person to the LA of their institution, & only if they are not studying at an institution is their resident LA used. Some Connexions services prefer to use a measure where all young people are recorded against their resident LA, therefore this is the measure they share with LAs in their area. There is also a measure that allocates a Young Person to a LA by using the location of the Connexions Service that they access.

# NEET Cohort & Not Known Comparison



January 2009	Adjusted NEET	NEET %	16-18 cohort	16-18s not known	% 16-18s not known	% NEET Jan 08	NEET Change Jan 08 - Jan 09
North West	17,909	7.5%	242,974	7,475	3.1%	7.9%	-5.3%
Cumbria Total	805	5.0%	16,354	345	2.1%	5.4%	-7.7%
Barrow	187	6.0%	3,569	147	4.1%	6.2%	-3.2%
North Area	232	4.2%	5,727	68	1.2%	5.1%	-17.6%
Kendal	70	3.5%	2,255	51	2.3%	2.9%	20.7%
Whitehaven	113	6.4%	1,905	32	1.7%	6.7%	-4.5%
Workington	142	5.4%	2,884	46	1.6%	5.1%	5.9%

Source: DCSF NCCIS

Produced by NW LSC Data & Research Teams

## Data Source

- NEET figures collated by DCSF on behalf of Connexions services. This version is known as the NCCIS version & looks at destinations of young people. The figures shown are the adjusted NEET where the NEET figure includes an estimate of how many of those recorded as Not Known are actually NEET. The district level information was sourced from the Connexions service of Cumbria.

## Why This Information has been used

- NEET is a key indicator of potential to engage with learning & as such provides a context for Commissioning
- Young people whose activity is Not Known is an area that needs to be addressed in order to bring young people into meaningful activity.
- Cohort information shown here is the Cohort starting from school leaving age, so 16 year olds still in education are excluded

## Data Analysis

- **2.1%** of young people in **Cumbria** were classified as situation 'Not Known' in January 2009. This is **below** the regional average
- **Cumbria** trend of Not Known is **similar** in comparison with the North West January 2008 to January 2009 months
- The overall NEET situation in Cumbria hides some large differences in trend between the districts. Kendal NEET has increased from 2.9% in January 2008 to 3.5% in January 2009 whereas North Area has decreased from 5.1% to 4.2%; however care must be taken before using these changes to make predictions in the future due to the very small number of young people recorded in some districts.

## Points to Consider

- Are there examples of good practice in addressing the number of young people whose situation is Not Known that could have contributed towards this improved performance & can they be shared with other Local Authorities?
- What issues have contributed towards this deteriorating/improving Not Known situation, & have measures been taken to address these ?
- Has the economic downturn influenced these figures or are other factors more important?

## Not in Education Employment or Training Age Trend



	Age 16			Age 17			Age 18		
	Jan 09	Jan 08	% change in year	Jan 09	Jan 08	% change in year	Jan 09	Jan 08	% change in year
England	5.4%	5.5%	-2%	6.7%	6.7%	1%	7.4%	7.2%	1%
North West	5.8%	6.3%	-7%	7.5%	7.9%	-5%	8.5%	8.7%	-2%
Cumbria	3.4%	3.6%	-6%	4.3%	4.7%	-9%	6.5%	6.4%	1%

Source: DCSF NCCIS

*Produced by NW LSC Data & Research Teams*

### Data Source

- NEET figures collated by DCSF on behalf of Connexions services. This version is known as the NCCIS version & looks at destinations of young people. The percentages shown are the adjusted NEET where the NEET figure includes an estimate of how many of those recorded as Not Known are actually NEET

### Why This Information has been used

- NEET is a key indicator of potential to engage with learning & as such provides a context for Commissioning
- The age split has been used to point out the changing nature of Young People in NEET. Changes in the mix of ages of young people that are NEET can point to reasons why the headline NEET figure may be changing

### Data Analysis

- For January 2009, **Cumbria's** group of NEET young people **has fewer 17 year olds than** the Northwest average
- Compared to last year, the group of young people whose situation is NEET in **Cumbria** are now **older**
- This trend in change of age is **the same** the region as a whole

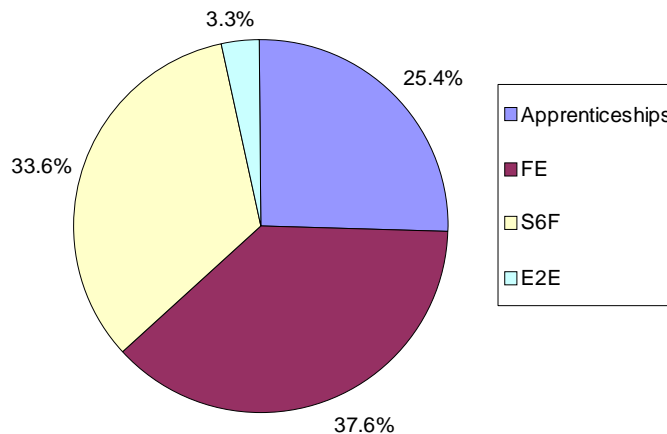
### Points to Consider

- Are the efforts for next year's September Guarantee targeted at the age with the highest proportion of NEET?
- Is this pattern of NEET age caused by educational or employment factors ?

# Overall Participation by Route



Cumbria Overall Participation by Route 2007/08



LSC FE, WBL ILR. School Census Data

Produced by NW LSC Data & Research Teams

## Data Source

- LSC FE, WBL ILR. ESF Short Record. Schools Census Data
- 2007/08 Full Academic Year

## Why This Information has been Used

- To show the balance of activity of young people in the local area across the different routes. The percentages shown are of those who participate, rather than the whole cohort. (i.e. does not include NEET, Employment).

## Data Analysis

- **37.6%** of 16-18 learners in the local area study in FE (**5,418**)  
Compared to **58.3%** regionally
- **25.4%** of 16-18 learners in the local area have undertaken an apprenticeship (**3,663**)  
Compared to **18.3%** regionally
- **33.6%** of 16-18 learners in the local area study in School Sixth Forms (**4,838**)  
Compared to **18.2%** regionally
- **3.3%** of 16-18 learners in the local area are engaged with E2E (**479**)  
Compared to **5.2%** regionally

## Points to Consider

- There are also approximately 430 young people in the North West attending specialist residential provision for Learners with Learning Difficulties & / or Disabilities
- It is not currently possible to attribute young people in Young Offenders institutions to individual local authorities as their home postcode is recorded as that of the institution. However, there are currently 573 learners in young offenders' institutions in the North West.
- There are a further **1,305** learners in ESF funded provision in the local area

# Learner Analysis By Route

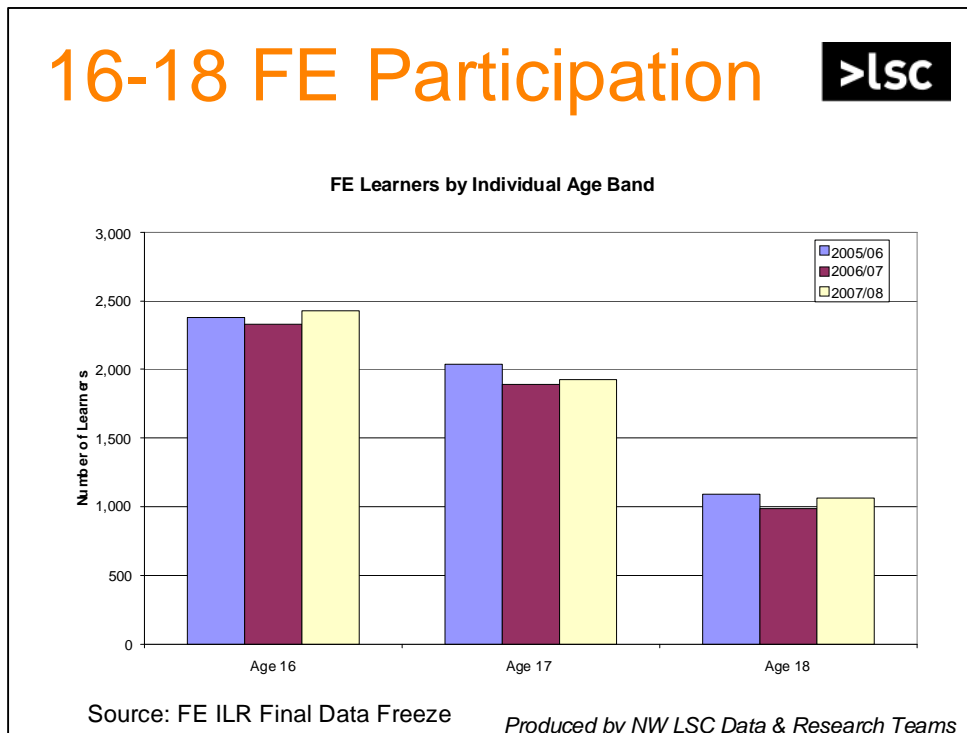


Leading learning and skills

# 05

*Produced by NW LSC Data & Research Teams*

# 16-18 FE Participation



## Data Source

- Further Education ILR, final data freeze. Cumbria residents (16-18) accessing FE learning.

## Why this information has been used

- To indicate the level of participation at age 17 – traditionally there is a decrease in participation at age 17.

## Data Analysis

- Participation at age 16 has **increased** by **2%** over the 3 year period – over 50 young people.
- Participation at age 17 has **decreased** by **5%**, 109 young people.
- Participation at age 18 has **decreased** by **2%**, 23 young people.
- 18 year olds currently account for 20% of 16-18 learners. According to population estimates for 2008 18 year olds account for **31%** of the cohort.

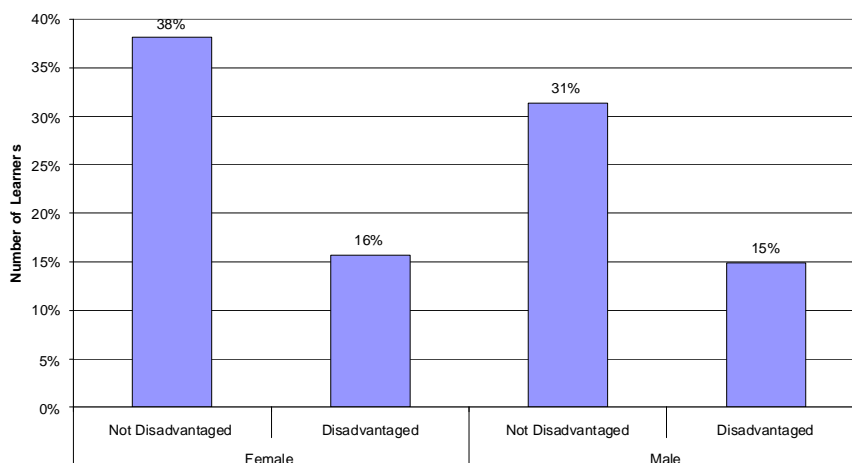
## Points to consider

- The proportion of 18 year olds in learning appears to be low compared to the cohort.
- The number of 17 & 18 year olds in learning is decreasing, has there been a shift in FE to WBL/E2E provision or are these learners falling into the NEET category?

# 16-18 FE Participation



FE Learners by Gender and Disadvantage



Source: FE ILR Final Data Freeze

Produced by NW LSC Data & Research Teams

## Data Source

- Further Education ILR, final data freeze. Cumbria residents (16-18) accessing FE learning.

## Why this information has been used

- This information has been included to determine whether there are groups of learners who are currently being under-represented in learning. We need to ensure that all young people – regardless of their gender, race, disability & background - have the opportunities they need to succeed.

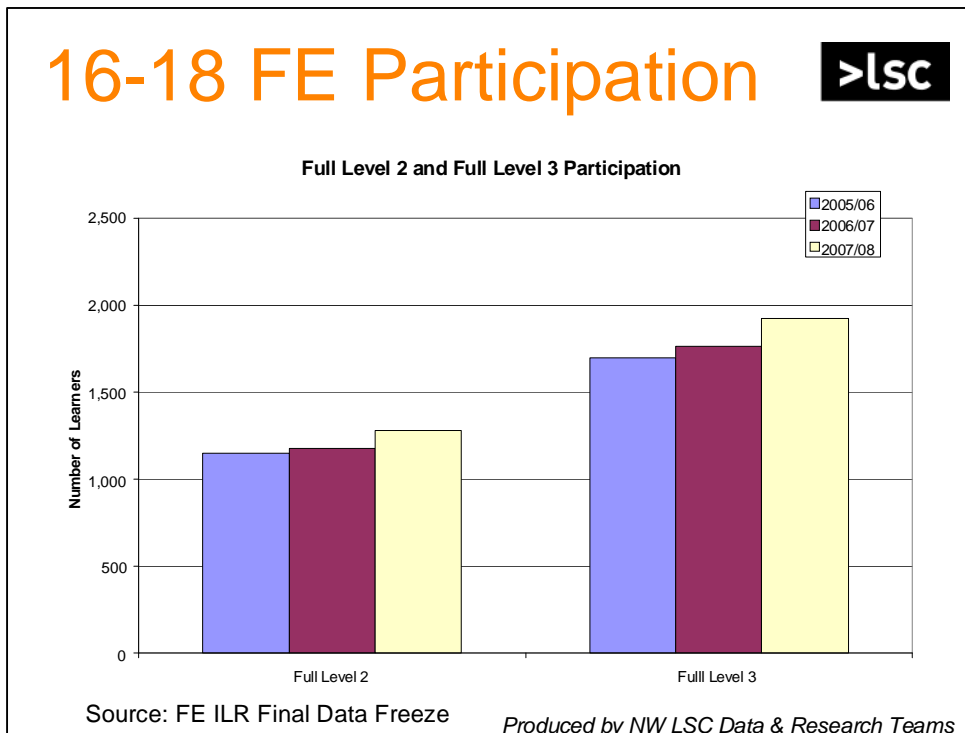
## Data Analysis

- Female learners account for 51% of the total in learning.
- Disadvantaged learners account for 31% of the total in 2007/08, this figure has stayed constant since 2005/06.
- Male learners who are disadvantaged are least likely to participate in FE learning.
- There is a higher proportion of disadvantaged males in learning than disadvantaged females – 29% of females are disadvantaged whereas 32% of males are disadvantaged.
- LLDD learners account for only 12% of total learners; this is below the regional average of 15%.
- 98% of learners are from a White background – an increase of 1% since 2005/06. These learners have been removed from the chart to focus on the detailed ethnic categories. 1% of learners have not declared their ethnicity.
- Indian, Other Asian & Pakistani are the largest ethnic groups engaged in learning, but at less than 0.5% this is a very small proportion of learners & reflects the fact that the local cohort across Cumbria as a whole is not very diverse. However, this may not be the case locally & the more detailed analyses by district in Cumbria may show local differences.

## Points to Consider

- Should the number of learners who are not disadvantaged be increasing as quickly as the disadvantaged given that they account for 70% of learners?
- Should there be a greater proportion of LLDD learners? Are these learners accessing WBL or falling in to the NEET category?
- Has the local population diversified since the Census figures were taken? Is this reflected in learning?

# 16-18 FE Participation



## Data Source

- Further Education ILR, final data freeze. Cumbria residents (16-18) accessing FE learning.

## Why this information has been used

- One of the young people's PSA targets is to increase the proportion of young people achieving Level 2/Level 3 by age 19. The PSA target runs until 2010/11; we are looking for Level 2/3 participation to increase in order to achieve this target – this is to analyse the contribution of FE learning towards this.

## Data Analysis

Despite the fluctuations in total learner numbers good progress has been made to increase the number of FL2 & FL3 learners.

### Full Level 2 participation

- **increased** by **2%** (27 learners) between 2005/06 & 2006/07.
- **increased** by **8%** between 2006/07 & 2007/08 (100 learners).
- overall **increase** since 2005/06 was **11%**, this is **lower** than the North West increase of 13% but is **above** the national increase of 10%.

### Full Level 3 participation

- **increased** by **4%** between 2005/06 & 2007/08 (67 learners).
- **increased** by **9%** between 2006/07 & 2007/08 (157 learners).
- overall **increase** since 2005/06 was **13%**, this is higher than the 11% increase across the North West & 10% nationally.

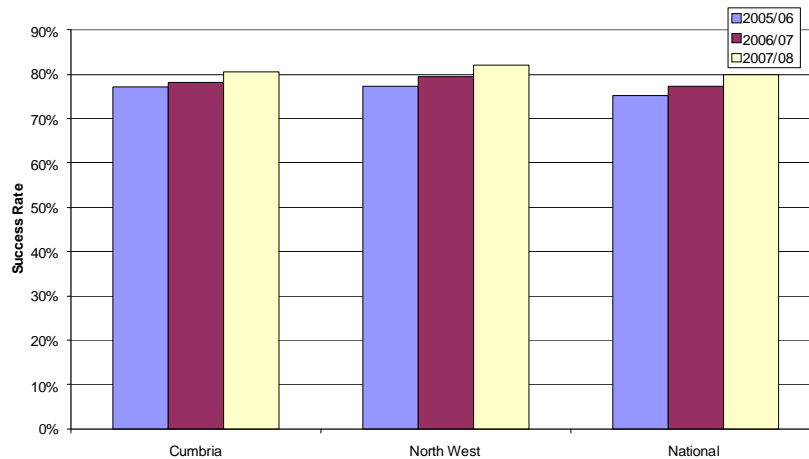
## Points to consider

- Good progress has been made at the Cumbria LSC level however, further analysis is needed to show whether this is reflected across all districts.

# 16-18 FE Performance



FE Success Rates, 2005/06 to 2007/08



Source: FE ILR Final Data Freeze

Produced by NW LSC Data & Research Teams

## Data Source

- Further Education Success Rates 2007/08 final freeze, Cumbria residents (16-18) attending FE provision.
- The success rate is defined as the number of learning aims achieved divided by the number of learning aims started.

## Why this information has been used

- This data is included to compare how the residents of the area are performing in terms of achievement compared to the North West & Nationally. All learners should have the same opportunities & chance of successfully completing their course.

## Data Analysis

- Success rates for Cumbria residents (81%) are very slightly **below** the regional average of 82% & above the national average of 80% in 2007/08.
- They have **improved** consistently between the years & are 4% points higher than in 2005/06. However, this rate of improvement is slightly **below** the regional & national rate of 5% points.
- Statistical Neighbours in the NW: Lancashire. The 2007/08 success rate for Cumbria residents is **below** the rate for Lancashire – 81% compared to 84% for Lancs.

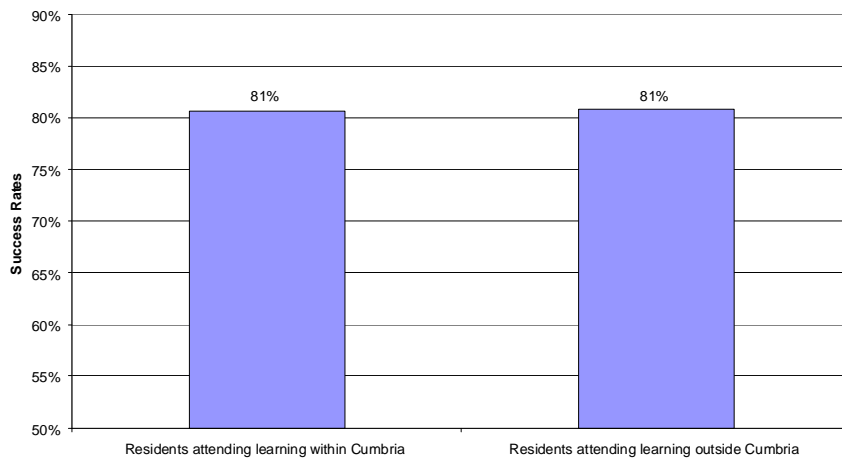
## Points to Consider

- Further analysis is needed to show whether there are particular providers who are affecting the success rates.

# 16-18 FE Performance



FE Success Rates by Provider Location, 2007/08



Source: FE ILR Final Data Freeze

Produced by NW LSC Data & Research Teams

## Data Source

- Further Education Success Rates 2007/08 final freeze, Cumbria residents (16-18) attending FE provision.
- The success rate is defined as the number of learning aims achieved divided by the number of learning aims started.

## Why this information has been used

- Learners need to have access to good quality training, if learners are travelling a long distance to access provision this may have a detrimental effect on their chances of successfully completing the course.

## Data Analysis

- 92% of learners attend learning within Cumbria.
- Residents of Cumbria have the same chance of success whether they stay within Cumbria to access provision or travel outside.
- With the majority of learners accessing provision within Cumbria it makes sense to focus on those providers to increase success rates.
- Cumbria has 7 providers – Barrow-in-Furness Sixth Form College, a sixth form college; Carlisle College, Furness College, Kendal College, & Lakes College West Cumbria – all GFE Colleges; University of Cumbria, Higher Education Organisation; & Cumbria County Council.
- Barrow-in-Furness College has the highest success rate for Cumbria residents in 07/08 at 83%, however, this is 2% points below the national benchmark for Sixth Form Colleges (85%). All other colleges are above national benchmarks for their provider type.

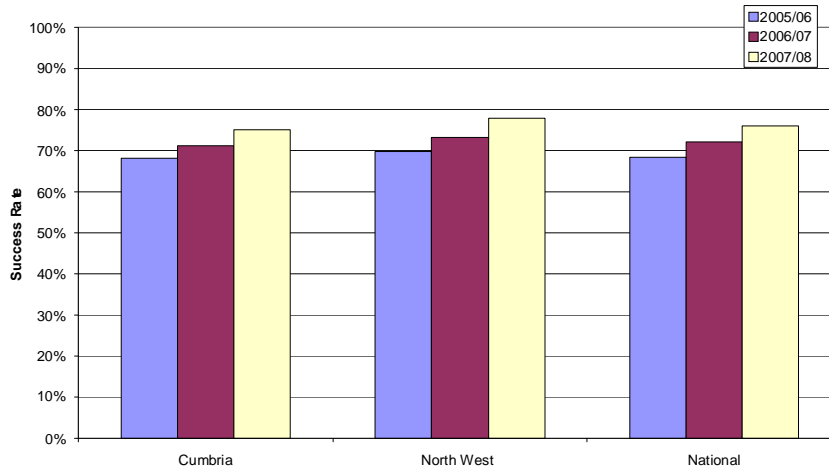
## Points to consider

- Further analysis is needed to show whether the high success rates are reflected across all districts.

# 16-18 FE Performance



FE Long Level 2 Success Rates



Source: FE ILR Final Data Freeze

Produced by NW LSC Data & Research Teams

## Data Source

- Further Education Success Rates 2007/08 final freeze
- The success rate is defined as the number of learning aims achieved divided by the number of learning aims started. Cumbria residents (16-18) attending FE provision.

## Why this information has been used

- This data has been included to indicate performance at Level 2 – this is critical to achievement of the LSC's PSA L2/L3 achievement targets.
- **Long qualifications (longer than 24 weeks)** have been included here as not all Level 2 aims are a full Level 2 qualification. Selecting full Level 2 aims only would have excluded many qualifications which have a significant contribution to the number of full Level 2 learners. For example, a GCSE is not a full Level 2 qualification in its own right. However, a learner who is taking 5 GCSEs or more is a full Level 2 learner.

## Data Analysis

- Long Level 2 success rates **increased** from 68% in 05/06 to 75% in 07/08 – an increase of 7% points.
- The success rate for 07/08 is **below** the national & regional averages – 75% compared to 78% for the region & 76% nationally.

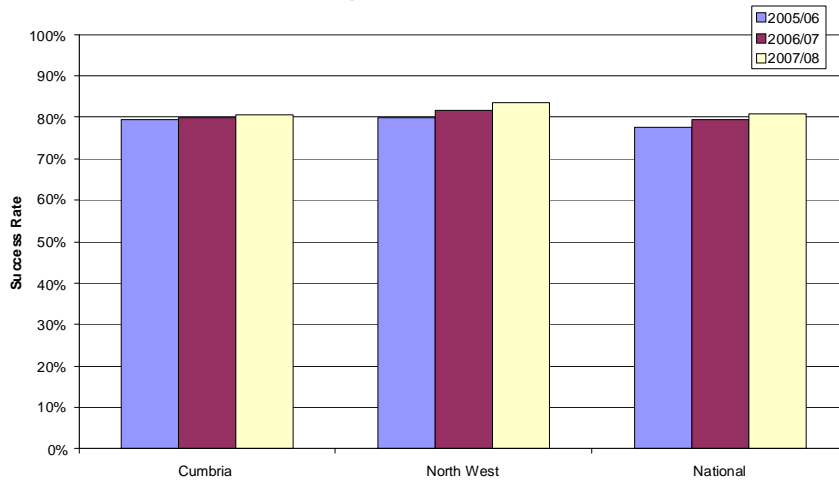
## Points to Consider

- Data at provider level show long Level 2 success rates could be improved at Kendal College & Cumbria County Council.

# 16-18 FE Performance



FE Long Level 3 Success Rates



Source: FE ILR Final Data Freeze

Produced by NW LSC Data & Research Teams

## Data Source

- Further Education Success Rates 2007/08 final freeze, Cumbria residents (16-18) attending FE provision.
- The success rate is defined as the number of learning aims achieved divided by the number of learning aims started.

## Why this information has been used

- This data has been included to indicate performance at Level 3 – this is critical to achievement of the LSC's PSA L2/L3 achievement targets.
- **Long qualifications (longer than 24 weeks)** have been included here as not all Level 3 aims are a full Level 3 qualification. Selecting full Level 3 aims only would have excluded many qualifications which have a significant contribution to the number of full Level 3 learners. For example, a learner doing A levels may do 3 to become a full Level 3 learner but individually an A level is not a full Level 3 qualification.

## Data Analysis

- Increases are not as significant for long Level 3 courses.
- Long Level 3 success rates are 1% point lower than the national average in Cumbria at 80% compared to 81% nationally.
- This is also below the regional average of 84%.
- Success rates have increased by 1% point since 2005/06, regionally there was an increase of 5% points.

## Points to Consider

- The rate at which success rates are increasing is below the national & regional averages so this needs to be addressed to ensure that Cumbria does not fall behind in future years.

## FE Success Rates by Learner Characteristic



### Cumbria LA

- The overall success rate is **81%**
- There is no significant gender gap
- The success rate gap between those with and those without a disadvantage is slightly wider for females (-5% points)

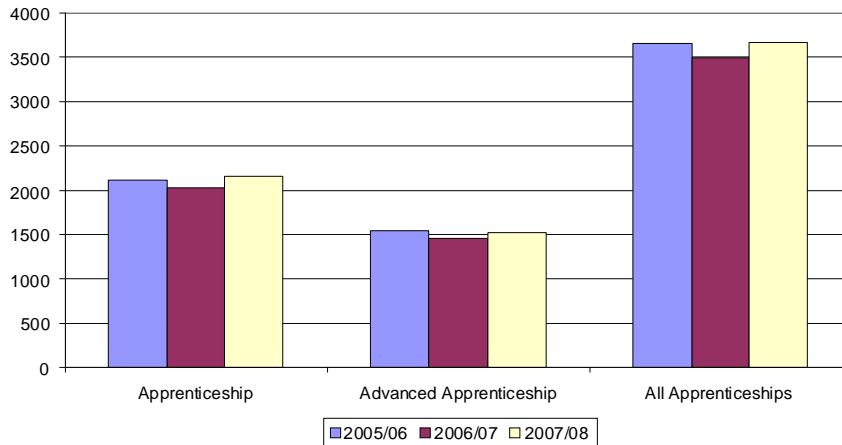
*Produced by NW LSC Data & Research Teams*

- In Cumbria 5,311 young people in FE are White. 59 are from a BME group
- The overall 16-18 FE Success Rate for resident of Cumbria is 81% - compared to a regional (NW) rate of 82%.
- The points made in the slide are a summary of analysis of the data, the accompanying dataset can be used to assess performance by learner characteristic.
- In some smaller areas, in terms of FE learner volumes, the number of learners must be used to provide context to the percentage analysis.

# Apprenticeship Residency Participation



## Participation In Learning 16-18: Cumbria



Source: LSC WBL ILR Data 2005/06, 2006/07, 2007/08 Final Period

Produced by NW LSC Data & Research Teams

### Data Source

- Work Based Learning ILR data 2005/06, 2006/07 & 2007/08 (Final Period data for each year)

### Why This Information has been Used

- To provide a clear view of the 16 to 18 year olds in Cumbria participating in an Apprenticeship Programme. Split shown to highlight Apprenticeships (Level 2) & Advanced Apprenticeships (Level 3), as well as the overall position.
- To meet Demand Led Funding criteria, Participation comprises the carry over from the previous year plus starts excluding less than 6 week starts in the relevant year.

### Data Analysis

- All Apprenticeships have increased by 0.1% between 2005/06 & 2007/08
- Apprenticeships (Level 2) have increased by 1.6% between 2005/06 & 2007/08
- Advanced Apprenticeships (Level 3) have decreased by 1.8% between 2005/06 & 2007/08

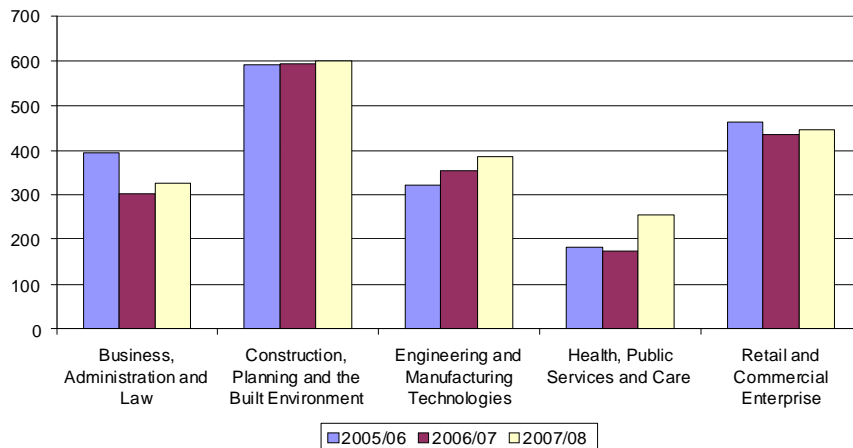
### Points to Consider

- Residents in Cumbria account for 9.8% of the North West's Apprenticeships.
- Apprenticeships in the North West decreased by 5.6% between 2005/06 & 2007/08.
- Advanced Apprenticeships in the North West decreased by 2.4% between 2005/06 & 2007/08.

# Apprenticeship Level 2 Participation by Sector



Participation at Level 2: Cumbria



Source: LSC WBL ILR Data 2005/06, 2006/07, 2007/08 Final Period

Produced by NW LSC Data & Research Teams

## Data Source

- Work Based Learning ILR data 2005/06, 2006/07 & 2007/08 (Final Period data for each year)

## Why This Information has been Used

- To provide a clear view of the 16 to 18 year olds in Cumbria participating on a Level 2 Apprenticeship Programme by sector.
- Only the Top 5 Participation sectors in Cumbria included in the chart.
- To meet Demand Led Funding criteria, Participation comprises of the carry over from the previous year plus starts excluding less than 6 week starts in the relevant year.

## Data Analysis

- Business, Administration & Law significantly decreased by 17.7% between 2005/06 & 2007/08
- Engineering & Manufacturing Technologies increased by 19.9% between 2005/06 & 2007/08
- Health, Public Services & Care increased by 40.9% between 2005/06 & 2007/08

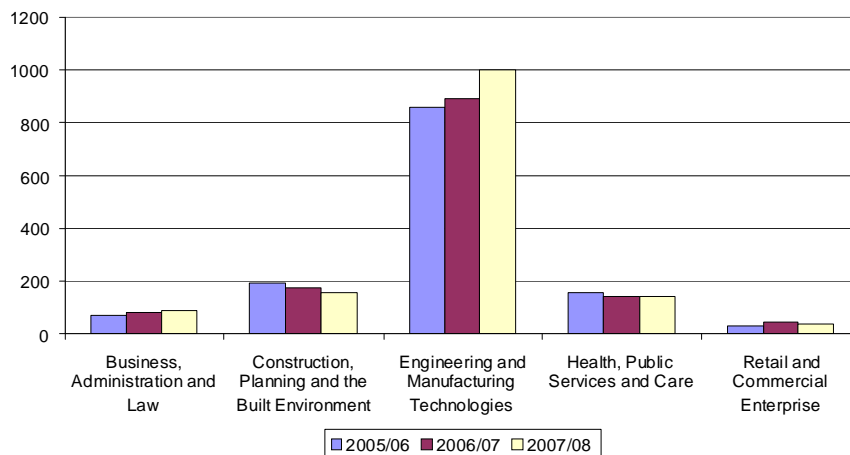
## Points to Consider

- The decrease in Business, Administration & Law is reflected by a decrease in this sector in the North West.
- The increase in Engineering & Manufacturing Technologies is not consistent with the North West where there has been a 4% decrease in this sector.
- Health, Public Services & Care is not consistent with the North West's 13% decrease in this sector.

# Apprenticeship Level 3 Participation by Sector



Participation at Level 3: Cumbria



Source: LSC WBL ILR Data 2005,06, 2006/07, 2007/08 Final Period

Produced by NW LSC Data & Research Teams

## Data Source

- Work Based Learning ILR data 2005/06, 2006/07 & 2007/08 (Final Period data for each year)

## Why This Information has been Used

- To provide a clear view of the 16 to 18 year olds in Cumbria participating on a Level 3 Apprenticeship Programme by sector.
- Only the Top 5 Participation sectors in Cumbria included in the chart.
- To meet Demand Led Funding criteria, Participation comprises the carry over from the previous year plus starts excluding less than 6 week starts in the relevant year.

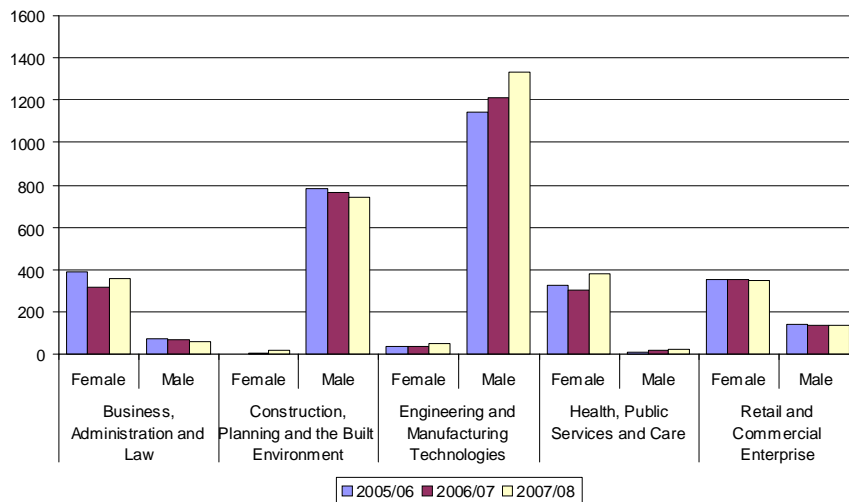
## Data Analysis

- Construction, Planning & the Built Environment decreased by 19.5% between 2005/06 & 2007/08
- Engineering & Manufacturing technologies increased by 16.3% between 2005/06 & 2007/08

## Points to Consider

- North West's 21% reduction in Construction, Planning & the Built Environment is consistent with the area's decrease.
- Engineering & Manufacturing Technologies increase in participation is reflective of the Cumbria region's 13% increase.

# Apprenticeship Participation by Gender & Sector



Source: LSC WBL ILR Data 2005,06, 2006/07, 2007/08 Final Period

Produced by NW LSC Data & Research Teams

## Data Source

- Work Based Learning ILR data 2005/06, 2006/07 & 2007/08 (Final Period data for each year)

## Why This Information has been Used

- To provide a clear view of the 16 to 18 year olds in Cumbria participating on an Apprenticeship Programme by sector & gender.
- Only the Top 5 Participation sectors in Cumbria included in the chart.
- To meet Demand Led Funding criteria, Participation comprises the carry over from the previous year plus starts excluding less than 6 week starts in the relevant year.

## Data Analysis

- Construction, Planning & the Built Environment has low female participation over the 3 years.
- Engineering & Manufacturing Technologies' female participation has increased 50% over the 3 years.
- Health, Public Services & Care has had low male participation over the 3 years.

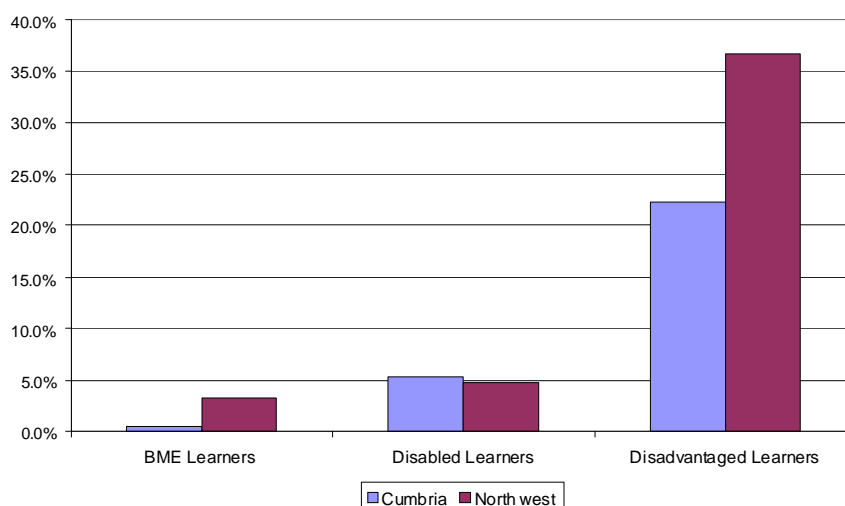
## Points to Consider

- The Female to Male participation ratio & reduction in participation is consistent with the North West.

## Apprenticeship Participation by Learner Characteristic



Leading learning and skills



Source: LSC WBL ILR Data 2007/08 Final Period

Produced by NW LSC Data & Research Teams

### Data Source

Work Based Learning ILR data 2007/08 (Final Period data)

### Why This Information has been Used

- To provide a clear view of the 16 to 18 year olds in Cumbria participating in an Apprenticeship Programme. Split by Ethnicity, Disability & disadvantaged compared by region & North West region.
- To meet Demand Led Funding criteria, Participation comprises the carry over from the previous year plus starts excluding less than 6 week starts in the relevant year.

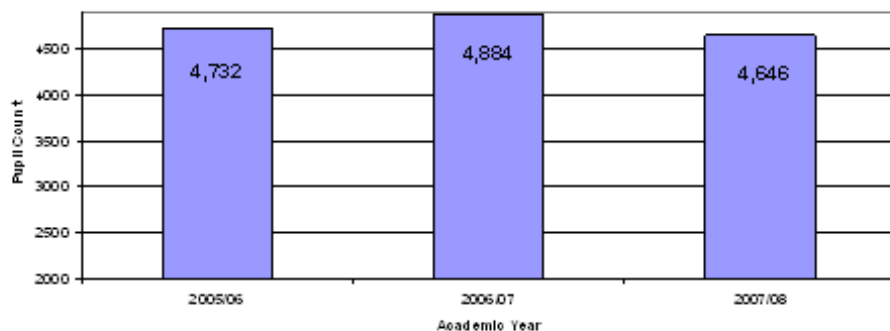
### Data Analysis

- BME learners' participation in Cumbria is 2.9 percentage points below the North West region participation percentage of BME learners.
- Disabled learners participation in Cumbria is slightly above the North West region participation percentage of disabled learners.
- Disadvantaged learners' participation in Cumbria 14.3 percentage points lower than the North West region participation percentage of disadvantaged learners.

### Points to Consider

- BME Learner participation has increased 27.3% between 2005/06 & 2007/08.
- Disabled Learner participation has increased 6.6% between 2005/06 & 2007/08.
- Disadvantaged Learner participation has decreased 7.9% between 2005/06 & 2007/08.

## S6F Provider based Participation: Cumbria



Source: Schools 6<sup>th</sup> Form Census Data 2005/06, 2006/07 & 2007/08

Produced by NW LSC Data & Research Teams

### Data Source

- Schools 6<sup>th</sup> Form Census data 2005/06, 2006/07 & 2007/08

### Why This Information has been Used

- To show participation in School Sixth forms in the Cumbria area

### Data Analysis

- School 6<sup>th</sup> Form learner numbers have **increased** by 246 learners in 2006/07 & **decreased** by 238 learners in 2007/08.
- The current year figures (2008/09) show 4,510 learners in School Sixth Forms in Cumbria, this is a **decrease** of 136 learners since 2007/08.

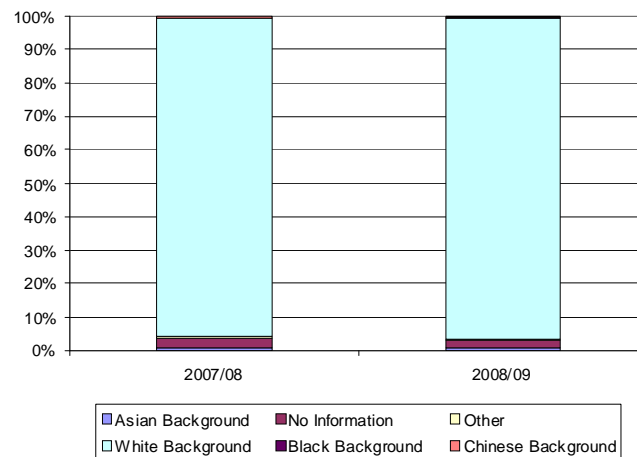
### Points to Consider

- The end of academic year 2007/08 saw the **closure/merger** of 4 schools in Cumbria – learners absorbed elsewhere?
- Cumbria School Sixth Forms primarily offer a wide range of GCE A/AS Level courses & a number of Level 1, 2 & 3 vocational qualifications.

### Local Data

- Local Authorities may hold extensive information on school 6<sup>th</sup> Form provision & performance, the information in this section is intended to complement that locally held data.

## S6F Participation by Characteristic Cumbria



Source: LSC S6F Data 2007/08 S06 & 2008/09 S02

Produced by NW LSC Data & Research Teams

### Data Source

- Schools Sixth Form data 2007/08 & 2008/09 (S06, S02)

### Why This Information has been Used

To enable further analysis of the young people attending **Cumbria** School Sixth Forms

### Data Analysis

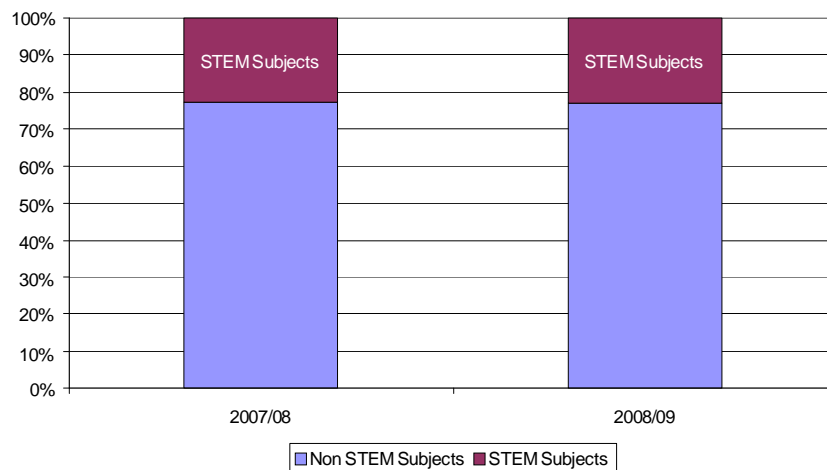
- 5%** of learners in School Sixth Forms in **Cumbria** in 2007/08 were from a minority ethnic group, this **remained the same in 2008/09**.
- The number of learners from **Asian Backgrounds increased by 2%** in 2008/09.
- There was a **1% increase in learners from White Backgrounds** in the same period.
- 44%** of learners in School Sixth Forms in **Cumbria** in 2007/08 were Male, this **increased to 45%** in 2008/09.

### Points to Consider

- The proportion of learners who are from a minority ethnic group is reflective of the local population in **Cumbria**.
- When split by gender there are **45% more females participating than males from White Backgrounds** in 2008/09.
- In contrast there are **100% more females participating than males from Asian Backgrounds** in 2008/09.
- Are young people from disadvantaged backgrounds given sufficient opportunity to succeed through School Sixth Form provision in the area?
- Is the proportion of disabled young people in School Sixth Forms in the area higher or lower than FE institutions?

## S6F Participation in STEM Subjects

### Cumbria



Source: LSC S6F Data 2007/08 S06 & 2008/09 S02

Produced by NW LSC Data & Research Teams

#### Data Source

- Schools Sixth Form ILR data 2007/08 & 2008/09 (S06, S02)

#### Why This Information has been Used

- Increasing participation in Science Technology Engineering & Maths has been identified as a key catalyst for growth in developing industry sectors in England, skilled employees will be in demand in future for these high value added industries. STEM analysis does not include the Social Sciences, they are included with the main body of subjects studied in **Cumbria**.

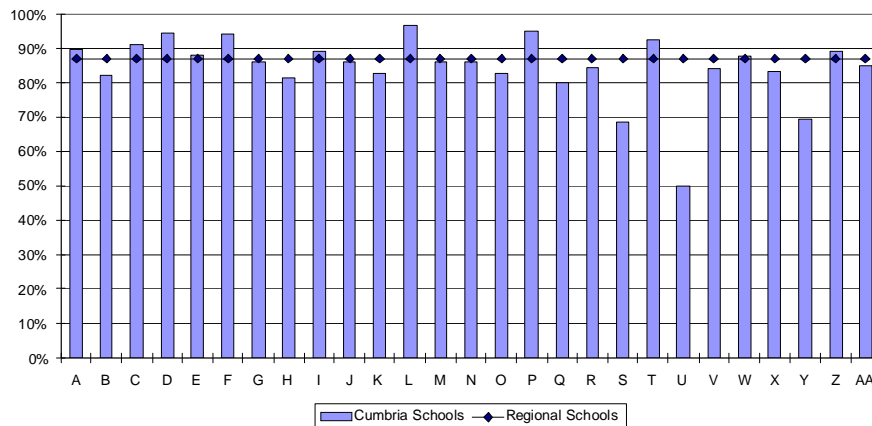
#### Data Analysis

- Participation in STEM subjects in **Cumbria** has **increased from 5683 enrolments in 2007/08 to 7547 in 2008/09**.
- Participation in STEM subjects has **increased by 33%** over the last 2 years; however this is **below the regional rate of increase of 53%**.
- STEM subjects make up **23% of total learning aims in 2007/08 & 23% in 2008/08** in **Cumbria** School Sixth Forms, this is the **above the regional rate for 2007/08 (21%) & below the regional rate for 2008/09 (24%)**.

#### Points to Consider

- Could more be done to increase participation in STEM subjects in the area? Or are there examples of good practice that could be shared with the wider sub-regional group?
- The analysis shows that qualifications in **Biology, Chemistry, Mathematics & Physics** have higher volumes of participation than other STEM subjects in **Cumbria**.
- This corresponds with Regional participation patterns for STEM Subjects; **Mathematics, Biology, Chemistry & ICT being the top 4 STEM** Subject areas, & alignment with key employment sectors in Cumbria (Nuclear Industry)
- There has been a marked **increase (58%)** in participation in **Physics** in 2008/09; however this is **below the regional rate of increase of 60%**.
- The main subjects studied by learners in School Sixth forms in **Cumbria** are **Sports Studies, Art & Design, Business Studies & Social Sciences**; this is in alignment with key employment sectors in **Cumbria (Health & Social Work, Wholesale & Retail, Hotels & Restaurants)**

# S6F Success Rates Cumbria



Source: LSC Schools Sixth Form ILR data 2007/08 (S06)

Produced by NW LSC Data & Research Teams

## Data Source

- Success Rates are derived from the 2007/08 S06 Schools Sixth Form standard file. The success element includes aim types GCE A/AS Level, GCSE, GNVQ/AVCE & International Baccalaureate.
- Year 13 & 14 success element = achieved/starts (Where achieved is outcome achieved & completion status complete). The 2007/08 School Sixth Form success rate = retained rate \* year 13 & 14 success element; the Retained rate =  $0.5 + 0.5 * (\text{starts} - \text{withdrawals}) / \text{starts}$ . Where there are fewer than 20 starts (in both cases) the national rate is used.
- **The letters along the Y axis (A, B, C...) denote the schools in the Cumbria Region in the order they appear in the data sheets.**
- NOTE: At the time of writing LSC data analysts have access to only 2 years' success rates for School Sixth Forms

## Why This Information has been Used

- To provide information on the quality of School Sixth Form provision in the Cumbria area

## Data Analysis

- The 2007/08 success rate for School Sixth Forms year 13/14 in **Cumbria is 87%**, this is **equal to regional average of 87%**
- The average 2007/08 success rate for School Sixth Forms in **Cumbria is 81%** this is **decreased by 1%** on the 2006/07 Success Rate figure of **82%**.

## Points to Consider

- Is a young person more or less likely to succeed in a School Sixth Form in **Cumbria** than elsewhere?
- Is a young person more or less likely to achieve in School Sixth Form provision in **Cumbria** than in other types of training provision available?

## Local Data

- Given that LSC analysts only have access to 2 years comparable success rates for School Sixth Forms, does the Local Authority hold any information that may complement the data used above? That could provide further insight to aid planning.

# Learners with Learning Difficulties & / or Disabilities



Leading learning and skills

# 06

*Produced by NW LSC Data & Research Teams*

## Pupils with SEN in School Sixth Forms (residency based)



Year	Pupils with Statements	School Action	School Action Plus	Area % SEN	Region % SEN	England % SEN
2006/07	50	20	6	3.7%	6.9%	
2007/08	10	22	12	2%	4.3%	5.6%*
2008/09	4	38	9	2.6%	4%	

Source: PLASC data for 2006/07, 2007/08 & 2008/09 extracted by LSC NW Research Team

\* % is for pupils in years 12/13/14, published in [http://www.dcsf.gov.uk/rsgateway/DB/SEF/s000794/SEF15\\_2008\\_Final.pdf](http://www.dcsf.gov.uk/rsgateway/DB/SEF/s000794/SEF15_2008_Final.pdf)

*Produced by NW LSC Data & Research Teams*

### Data Source

- PLASC Data extracted by LSC

### Why this Information has been included

- To quantify the number & share of children in school sixth forms who have special needs
- To identify young people who may be at greater risk of becoming NEET (regional research has demonstrated that young people with LDD make up 1 in 4 of the NEET group; their NEET rate is 25%)

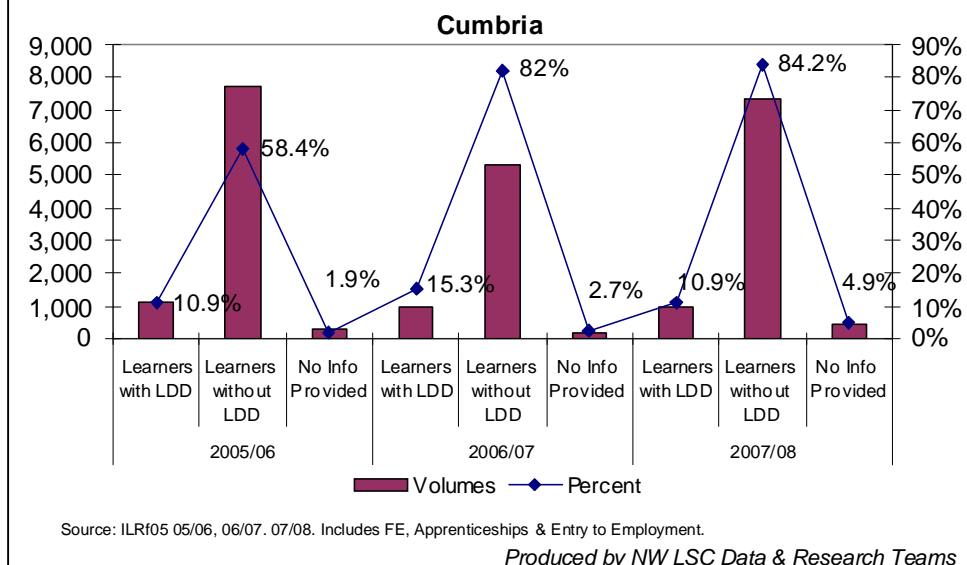
### Data Analysis

- The LA area has decreasing numbers of children in school sixth forms who are the subjects of Statements of SEN. See the accompanying data pack for each year's cohort of pupils.
- The LA area's share of 16-19 year olds with SEN is lower than the region & lower than England.

### Points to Consider

- National & regional research has identified that the proportion of learners with learning difficulties and/or disabilities is increasing year on year. Government policy is for more of those young learners to participate in mainstream provision, rather than to enter specialist and/or residential provision.
- The regional post-16 learning participation rate for young people with LDD aged 16-18 was estimated at 52.2% in research conducted in 2007, compared to 74.5 per cent for those without LDD. The participation rate for learners with LDD aged 19-25 was 8%, compared to 18%.

# Participation by Learners with LDD (residency based)



## Data Source

- Data from individual learner records (ILR), based on the residency of the learner.
- The individualised learning record (ILR) records the learning difficulties/disabilities/health status of learners based on their own self-assessment. The ILR field L14 provides for one of three entries to be made for each learner:
  - Learner considers himself or herself to have a learning difficulty &/or disability &/or health problem
  - Learner does not consider himself or herself to have a learning difficulty &/or disability &/or health problem
  - No information provided by the learner
- It is recognised that many learners for whom information is recorded in this field will not be able to identify themselves as having learning difficulties. This information will be recorded as a result of interviews with learners, their parents, guardians, teachers or advocates.

## Why this information has been included

- To identify district participation rates for learners with learning difficulties and/or disabilities & compare them with the regional picture

## Data Analysis

- The proportion of Learners with Learning Difficulties and/or Disabilities engaged in learning in Area is not in line with that found in the North West area. (14.2 percent in 2007/08).
- Participation in Apprenticeship is decreasing slightly. This may suggest a lack of suitable opportunities for LDD students who wish to learn in the work place.
- Participation in Entry to Employment is decreasing. This may suggest a lack of suitable opportunities for LDD students.
- Proportion of LDD students attending FE colleges is below the regional average (which was 14.6% in 2007/08).

## Points to Consider

- Is there an annual assessment of the learning needs of those with LDD? If there is, does it identify issues with any particular learning route?
- Needs to be considered alongside success rates for learners with learning difficulties and/or disabilities
- Is the mix of learning difficulties significantly different from the regional picture?

# Learners in Independent Specialist Residential Colleges



Leading learning and skills

Learner LA	2006/2007			2007/2008			2008/2009		
	No of Learners	Total Placement Funding	Total 3rd Party	No of Learners	Total Placement Funding	Total 3rd Party	No of Learners	Total Placement Funding	Total 3rd Party
Cumbria County Council	35	£1,651,075	£0	37	£2,071,996	£0	38	£2,230,346	£0
Unit cost per LA learner	£47,173			£55,999			£58,693		
Unit cost per NW learner	£46,589			£55,028			£55,123		
Regional 3rd party contributions	£525,272			£587,931			£617,265		

\* Residency based data from ISP database, extracted by NW LSC Research & Data team.

*Produced by NW LSC Data & Research Teams*

## Data Source

- Data from ISP database. Based on residency of the learner.

## Why this information has been included

- To identify trends in the numbers of learners with learning difficulties and/or disabilities who have profound & complex needs & who require specialist provision

## Data Analysis

- The number of learners in the area with learning difficulties and/or disabilities who have profound & complex needs is increasing.
- The cost of supporting learners in this provision is increasing.
- The area trend is similar to the regional trend below.
- The unit cost of supporting these learners is higher than the regional unit cost.

## Points to Consider

- Whilst participation in mainstream provision is increasing, the number of placements regionally at Independent Specialist Provision (ISP) has remained relatively stable at around 460 between 2005/06 & 2007/08 & then reduced in 2008/09 to 429. However, increasing unit costs mean that the funding requirement has not been reduced.
- Does the area trend reflect regional trends? If not, why not?
- Is there a robust approach to challenging requests for specialist provision that ensures this provision is only available to those who will benefit the most?
- Are there third party contributions (usually from local authorities to cover the Care component of the placement)? If not, why not?

# Attainment by Age 19



Leading learning and skills

# 07

*Produced by NW LSC Data & Research Teams*

## Proportion reaching Level 2 Threshold by Age 19 by Area



Cumbria	2004	2005	2006	2007	2008	2004 to 2008 % Difference
England	66.4%	69.3%	71.4%	73.9%	76.7%	10.3%
North West	63.8%	67.3%	70.1%	72.4%	74.3%	10.5%
Cumbria (LA)	66.4%	69.9%	71.0%	72.9%	74%	7.6%

Source: Fisher Family Trust

Produced by NW LSC Data & Research Teams

Please note that the 2008 data has now been added to this slide, but the data analysis below refers to the data for 2004 to 2007.

### Data Source

- The national, regional & local figures can be sourced to the Fisher Family Trust matched administrative dataset for 2006/07 (Obtained from the DCSF Research & Statistics Gateway).

### Why This Information has been used

- Attainment of a level 2 qualification by age 19 is a key measure of success achieved by the resident young people of an area. Information on progress compared to regional, national, & other statistical benchmarks is essential to inform planning.

### Data Analysis

- 72.9% of young people in Cumbria achieved a level 2 by age 19 in 2007.
- This has increased by 6.5% points since 2004.
- Cumbria is 1.1% points above its statistical neighbours in 2007; the gap has narrowed since 2004.
- The achievement gap in 2007 between those who were eligible for free school meals & those who were not was 30% points.
- The rate of increase between attainment at 16 & attainment at 19 is 17.8% points; this is a lower rate of value added than the regional rate.

### Points to Consider

- The gap in attainment between those who are eligible for Free School Meals & those who aren't could be an area for further focus in this area – could increased collaborative working with schools help to increase attainment of all groups?
- The national PSA target is potentially very challenging for some LA areas to achieve, how is this viewed in the LA area? Do local targets reflect the national aspiration?

### Local Data

- Local colleagues in some areas have identified that there are discrepancies in the different level 2 attainment datasets available to analysts – how can these be used to give a more accurate picture of the locality? – Whilst bearing in mind that the LA is being measured nationally on the data set used in this analysis.

## Proportion reaching Level 3 Threshold by Age 19 by Area



Cumbria	2004	2005	2006	2007	2008	2004 to 2008 % Difference
England	42.0%	45.4%	46.6%	48.0%	49.8%	7.8%
North West	38.5%	42.0%	42.9%	44.6%	46.1%	7.6%
Cumbria (LA)	39.9%	44.3%	45.1%	45.9%	48%	8.1%

Source: Fisher Family Trust

Produced by NW LSC Data & Research Teams

Please note that the 2008 data has now been added to this slide, but the data analysis below refers to the data for 2004 to 2007.

### Data Source

- As with the Level 2 by Age 19 statistics, the national, regional & local figures can be sourced to the Fisher Family Trust matched administrative dataset for 2006/07. (Obtained from the DCSF Research & Statistics Gateway)

### Why This Information has been used

- Further to the reasons stated for the use of Level 2 attainment by age 19 statistics, this information is used here as a further key measure of progress.
- As well as being widely viewed as a gateway to higher education, it has been identified that an increasing proportion of employment opportunities in future will require at least a level 3 qualification.

### Data Analysis

- 45.9% of young people in Cumbria achieved a level 3 by age 19 in 2007.
- This has widened by 6.0% points since 2004.
- Cumbria is 1.1% points above its statistical neighbours in 2007; the gap has narrowed since 2004.
- The attainment gap in 2007 between those who were eligible for free school meals & those who were not was 31% points.
- The proportion attaining level 3 by age 19 is 2.1% points below the national rate.

### Points to Consider

- Rates of progression to HE are affected strongly by the level of attainment of level 3 – does this have implications for partnership working between schools, post 16 providers & IAG / Connexions services in Cumbria?
- Do the statistics show any trends that could imply that young people from deprived backgrounds are significantly disadvantaged in Cumbria – if so are any actions in place to address this?