

# 16-18 FE in the South West



Leading learning and skills

October 2008

## Information Service

**Purpose:** This document forms the '16-18 FE' section of the South West Strategic Analysis 2008. The Strategic Analysis is the annual 'stock-take' analysis and considers labour market intelligence, performance information and Government policy to develop a full strategic picture of current education and training marketplace. The analysis is supported by national skills research (including Skills in England Report 2007, National Employer Skills Survey and Working Futures). The stock-take provides the intelligence to confirm our strategies and priorities.

**Theme:** 16-18 FE

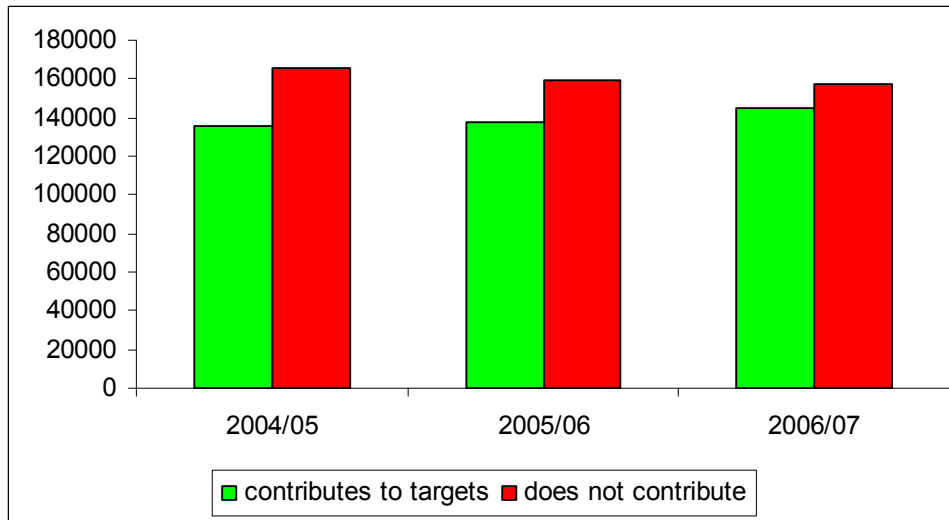
**Origin:** Faith Graham, Research Team, Learning, Planning and Performance Directorate, South West Regional Office

**Issue:** 1

**Review:** Revision of data to be completed August 2009

## 16-18 yr old FE enrolments

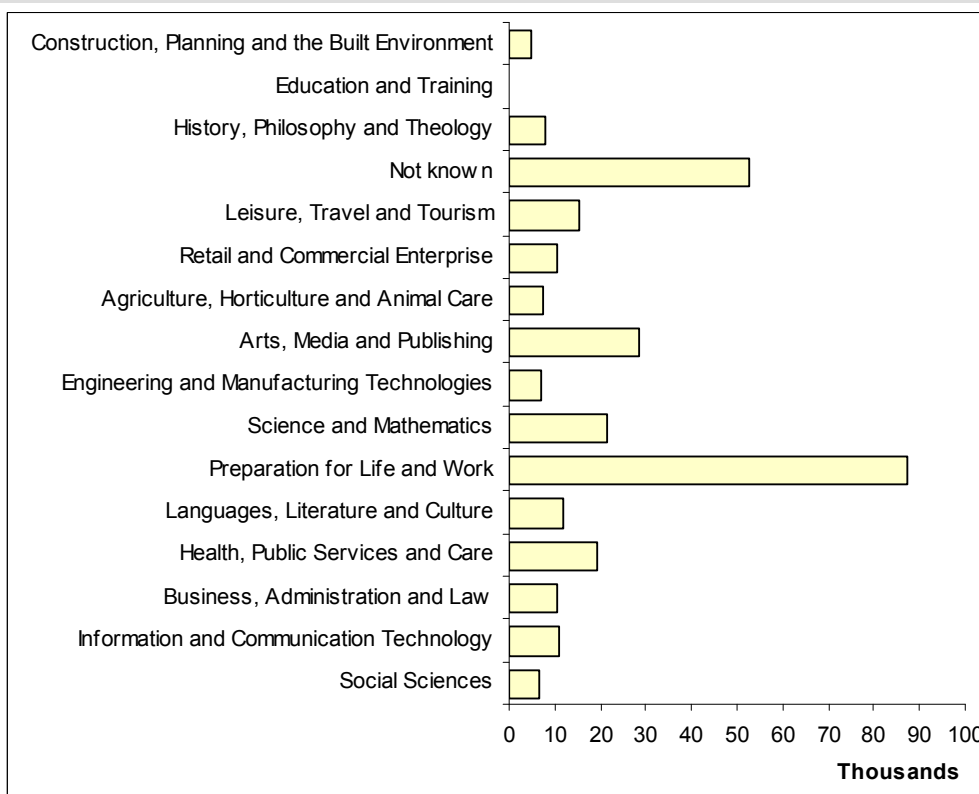
Figure 1: FE enrolments by South West resident 16-18 year olds



Source: ILR F05 – 2004/05, 2005/06, 2006/07

- > The largest classification of FE enrolments by SW resident 16-18 year olds was in level 3 provision which counts directly towards targets, with 27% of the total. 6% of provision is level 2 [directly contributing]. A further 19% of enrolments is at levels 2 or 3 but makes no direct contribution to targets. Skills for Life [target] provision accounted for 15% of enrolments, with this figure growing by 12% over three years. In combination, the enrolments which count directly towards achievement targets contribute just short of half of all enrolments - this figure has grown by 7% over three years. The category with the fastest rate of growth is level 2 provision which counts towards targets, which has grown by one fifth over three years.
- > 19% of enrolments were at unclassified levels - this proportion rose by 3% over the period in question.

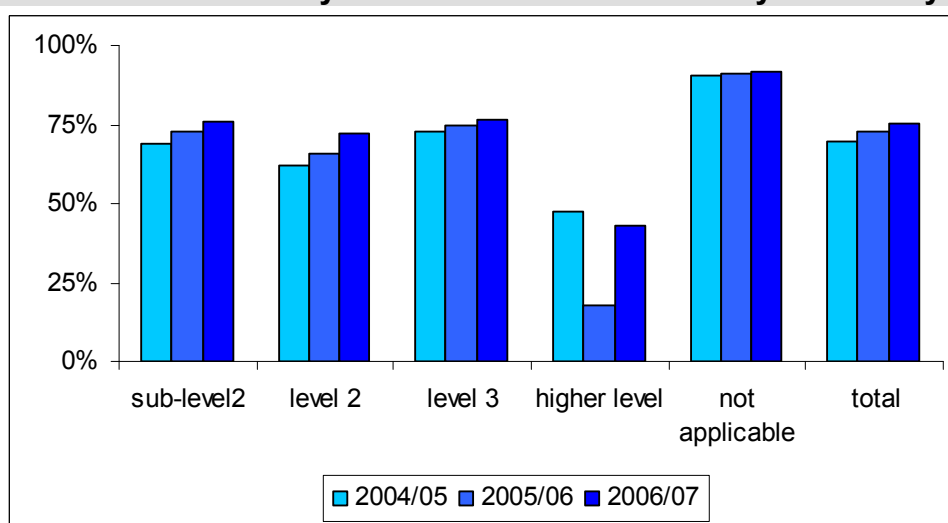
**Figure 2: FE enrolments by South West resident 16-18 year olds by SSA, 2006/07**



Source: ILR F05 – 2004/05, 2005/06, 2006/07

- > The number of 16-18 FE enrolments by learners from the South West remained static between 2004/05 and 2006/07, standing at 303,000.
- > Preparation for life & work was the largest category, accounting for 29% of total enrolments. This group was responsible for the largest volume of reductions. Large volumes of reduction were also recorded for sector subject areas including Health, public services & care; Information & communication technology and Social sciences. Balancing increases in volume were recorded for Construction, planning & the built environment; History, philosophy & theology and leisure, travel & tourism.
- > The greatest proportions of increase were measured for Education & training and for Construction, planning & the built environment.
- > 17% of enrolments were in the 'not known category'. This proportion grew by 19% over the period in question.

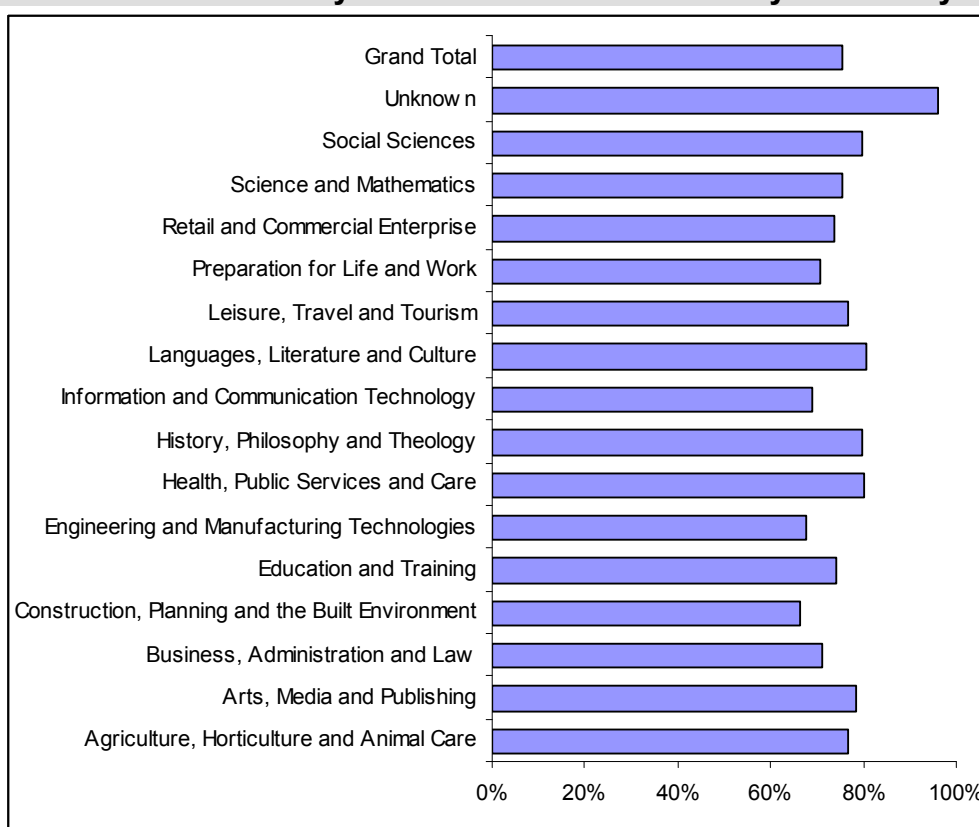
**Figure 3: FE success rates by South West resident 16-18 year olds by level**



Source: ILR F05 – 2004/05, 2005/06, 2006/07

- > FE 16-18 success rates are rising steadily in the region.
- > There has been an overall increase of 6% between 2004/05 and 2006/07.
- > Improvement has been achieved at all levels apart from 4+, although the number of learners is so small that average rates are unreliable.
- > The fastest growth has been at level 2, where an increase of 10% has been achieved.

**Figure 4: FE success rates by South West resident 16-18 year olds by SSA**



Source: ILR F05 – 2004/05, 2005/06, 2006/07

- > Of the known SSAs, Languages, literature & culture and Health, public services & care recorded the highest 16-18 success rates with more than 80%.
- > The lowest success rates were in Construction, planning & the built environment and Engineering & manufacturing technologies [66.6% and 67.6% respectively].
- > The overall success rate was just over 75%.

## Annex

**Table A1: FE enrolments by South West resident 16-18 year olds**

Qualification type	2004/05	2005/06	2006/07
Foundation Tier	48185	44791	42563
Level 2 Directly Contributes	14979	16606	18012
Level 2 Not Directly Contributes	43237	36533	36807
Level 3 Directly Contributes	78881	77733	80643
Level 3 Not Directly Contributes	20248	18985	19955
Level 4	113	59	74
Level not Classified	48158	53196	56550
Skills for Life - Non Acc	5840	5289	1545
Skills for Life - Target	41503	43321	46377
<b>Grand Total</b>	<b>301144</b>	<b>296513</b>	<b>302526</b>
contributes to targets	135363	137660	145032
does not contribute	165781	158853	157494

**Table A2: FE enrolments by South West resident 16-18 year olds by SSA**

SSA Tier 1	2004/05	2005/06	2006/07
Social Sciences	7974	6210	6651
Information and Communication Technology	12626	11053	10932
Business, Administration and Law	11716	10320	10731
Health, Public Services and Care	20710	20598	19228
Languages, Literature and Culture	12506	11793	11695
Preparation for Life and Work	92189	87039	87496
Science and Mathematics	22041	21092	21390
Engineering and Manufacturing Technologies	6856	7003	6803
Arts, Media and Publishing	28397	27869	28435
Agriculture, Horticulture and Animal Care	7180	6972	7388
Retail and Commercial Enterprise	10140	10291	10564
Leisure, Travel and Tourism	13801	14017	15240
Not known	44167	49504	52579
History, Philosophy and Theology	6670	8300	8051
Education and Training	324	401	412
Construction, Planning and the Built Environment	3840	4051	4931
Not Applicable	7		
<b>Grand Total</b>	<b>301144</b>	<b>296513</b>	<b>302526</b>

**Table A3: FE success rates by South West resident 16-18 year olds by level**

Level	2004/05	2005/06	2006/07
Foundation Learning Tier	68.89%	73.06%	76.17%
level 2	61.78%	65.71%	72.17%
level 3	72.95%	74.77%	76.52%
higher level	47.22%	17.65%	42.86%
not applicable	90.19%	91.00%	91.98%
<b>Grand Total</b>	<b>69.59%</b>	<b>72.47%</b>	<b>75.43%</b>

**Table A4: FE success rates by South West resident 16-18 year olds by SSA**

SSA Tier1	2004/05	2005/06	2006/07
Agriculture, Horticulture and Animal Care	59.58%	74.44%	76.89%
Arts, Media and Publishing	74.16%	74.72%	78.46%
Business, Administration and Law	67.56%	69.85%	71.18%
Construction, Planning and the Built Environment	55.67%	63.43%	66.58%
Education and Training	60.97%	59.72%	74.10%
Engineering and Manufacturing Technologies	64.46%	67.06%	67.63%
Health, Public Services and Care	76.74%	78.34%	80.06%
History, Philosophy and Theology	68.57%	70.49%	79.84%
Information and Communication Technology	57.35%	62.37%	68.94%
Languages, Literature and Culture	75.84%	77.91%	80.70%
Leisure, Travel and Tourism	69.37%	72.61%	76.55%
Preparation for Life and Work	64.19%	68.26%	70.72%
Retail and Commercial Enterprise	63.77%	70.60%	73.80%
Science and Mathematics	71.41%	72.07%	75.29%
Social Sciences	78.73%	79.69%	79.88%
Unknown	92.50%	95.61%	96.21%
Not Applicable			100.00%
<b>Grand Total</b>	<b>69.59%</b>	<b>72.47%</b>	<b>75.43%</b>

**Creator** Pete Gisborne  
**Job title** Regional Research Manager  
**Email** Pete.gisborne@lsc.gov.uk  
**Phone** 0117 372 6458  
**Date created** October 2008  
**Document ref.** G:\Shared\Research\strategic analysis 08\yp participation\Strategic Analysis 2008 - Young people participation report-oct2008.doc  
**LSC office** **LSC South West Region**  
Regional Office  
St Lawrence House 29-31 Broad Street Bristol BS1 2HF  
T 0117 372 6401 F 0117 372 6433 [www.lsc.gov.uk](http://www.lsc.gov.uk)