

Apprenticeship supply in the South West



Leading learning and skills

October 2008

Information Service

Purpose: This document forms the 'Apprenticeship supply' section of the South West Strategic Analysis 2008. The Strategic Analysis is the annual 'stock-take' analysis and considers labour market intelligence, performance information and Government policy to develop a full strategic picture of current education and training marketplace. The analysis is supported by national skills research (including Skills in England Report 2007, National Employer Skills Survey and Working Futures). The stock-take provides the intelligence to confirm our strategies and priorities.

Theme: Apprenticeship supply

Origin: Pete Gisborne, Regional Research Manager, Learning, Planning and Performance Directorate, South West Regional Office

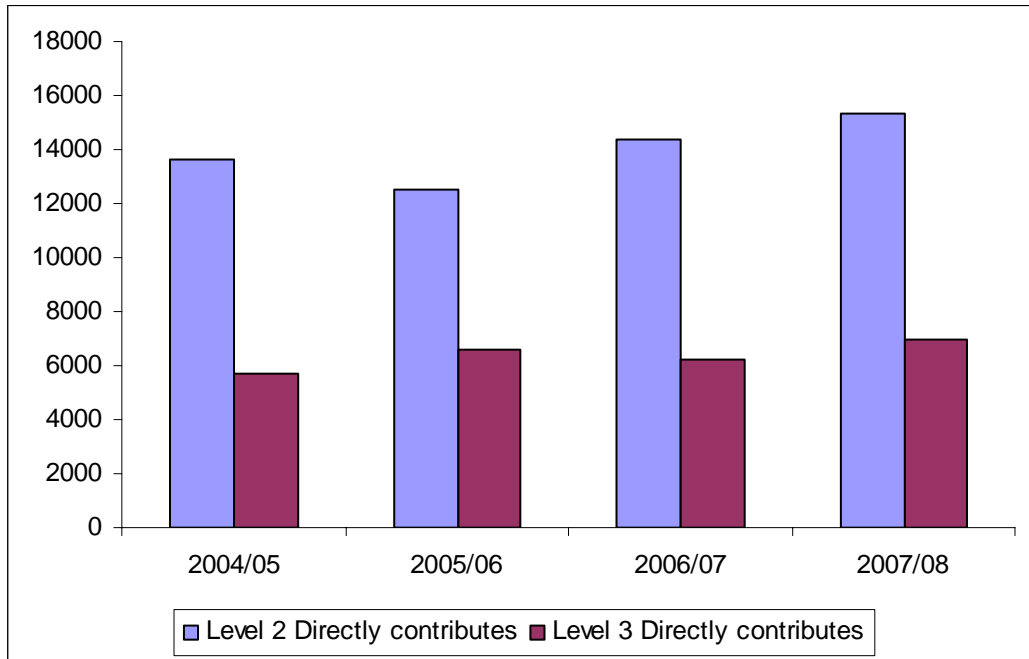
Issue: 1

Review: Revision of data to be completed August 2009

Contents

Figure 1: South West residents starting apprenticeships	3
Figure 2: Home local authorities of South West apprentices, 2007/08.....	4
Figure 3: Change in number of Work based Learning starts, 2004/05 to 2007/08 ..	4
Figure 4: Number of South West residents starting apprenticeships, by age.....	5
Figure 5: Apprenticeship starts by age, 2007/08.....	6
Figure 6: South West residents starting apprenticeships by SSA, 2007/08	6
Figure 7: South West residents starting apprenticeships by largest four SSAs (subdivided), 2007/08	7
Table 1: South West apprenticeship provision management by SSA tier 1, 2007/08	8
Table 2: South West apprenticeship provision management by SSA tier 2, 2007/08	8
Figure 8: All ages apprenticeships framework success rates.....	9
Figure 9: Number of 16-18 year old South West residents starting apprenticeships by level.....	10
Table 3: Number of 16-18 year old South West residents starting apprenticeships by SSA.....	10

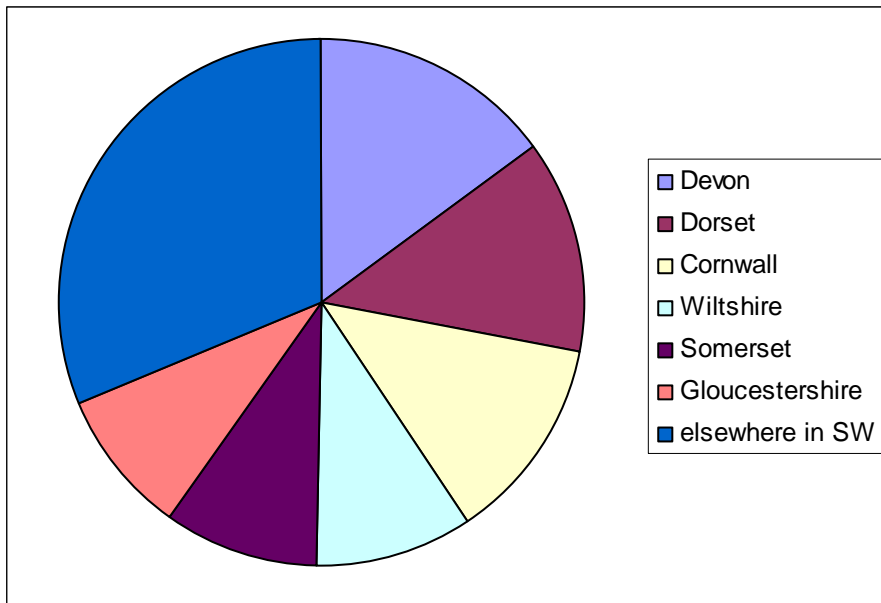
Figure 1: South West residents starting apprenticeships



Source: WbL ILR P12 2004/05, WbL ILR P12 2005/06, WbL ILR P12 2006/07, WbL ILR P10 2007/08

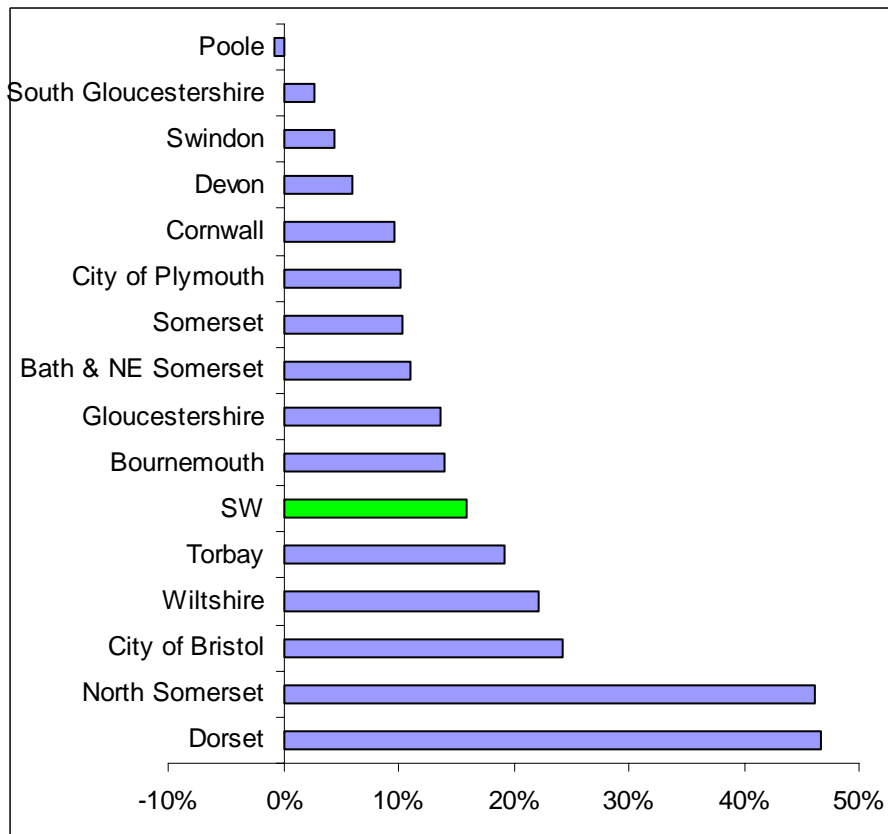
- > There were 22,355 starts on Apprenticeships in the SW region in 2007/08, up by 3,100 [or 16%] since 2004/05.
- > Seven starts out of ten were at level 2, this proportion having fallen slightly in recent years.
- > The biggest volume of growth [1,800] was at level 2, whereas the fastest rate of growth [23%] was at level 3.

Figure 2: Home local authorities of South West apprentices, 2007/08



Source: WbL ILR P12 2004/05, WbL ILR P12 2005/06, WbL ILR P12 2006/07, WbL ILR P10 2007/08

Figure 3: Change in number of Work based Learning starts, 2004/05 to 2007/08

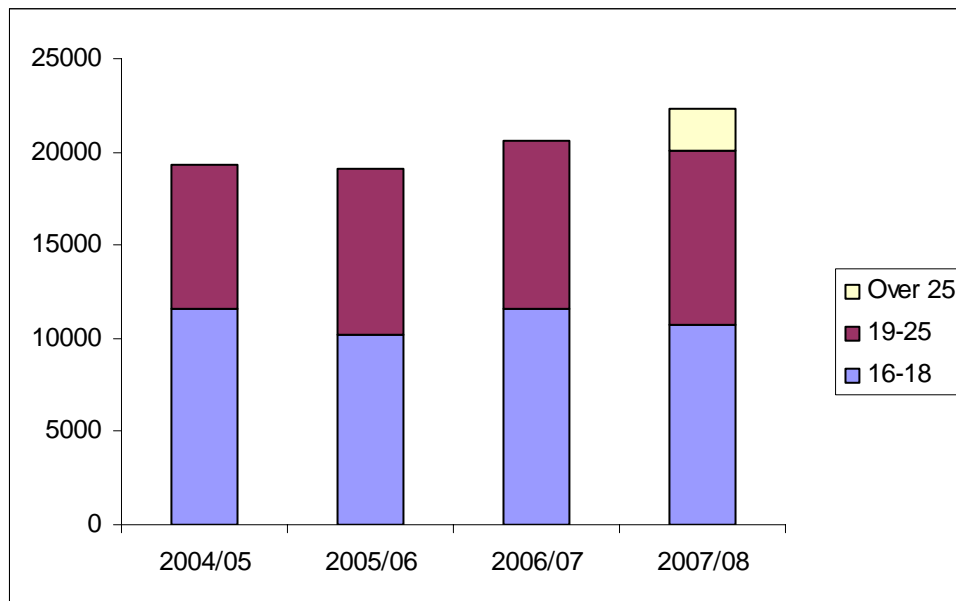


Source: WbL ILR P12 2004/05, WbL ILR P10 2007/08

- > There is great variation between the numbers of starts generated by different parts of the region. For example, Devon generates seven times as many starts as B&NES, although it has only four times the population.
- > Around 1/4 of LA areas account for around 1/2 of starts. These are:

- Devon 15%
 - Dorset 13%
 - Cornwall 13%
 - Wiltshire 10%
- > There is a wide range of growth rates in the region, with Dorset and North Somerset both recording growth rates of 25% or greater over the four years in question, whereas Poole's recorded a slight reduction over the same period.
- > Dorset in particular recorded fast growth, with an increase of 900 over the time period.

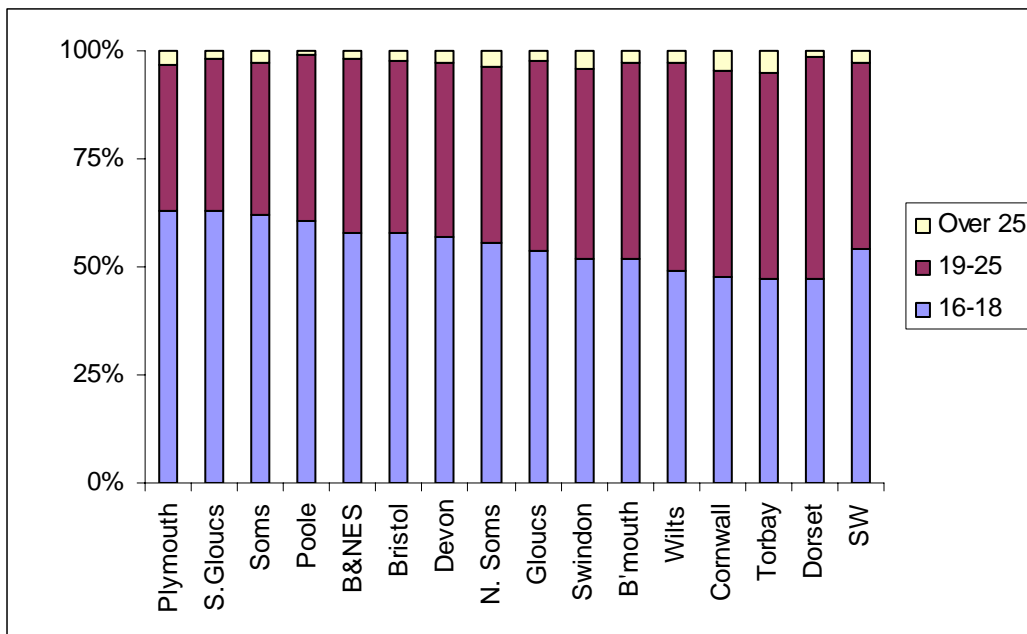
Figure 4: Number of South West residents starting apprenticeships, by age



Source: WbL ILR P12 2004/05, WbL ILR P12 2005/06, WbL ILR P12 2006/07, WbL ILR P10 2007/08

- > The 10% increase in Apprenticeship starts has been driven by growth in the 19-24 age group, and latterly, in the 25+ group.

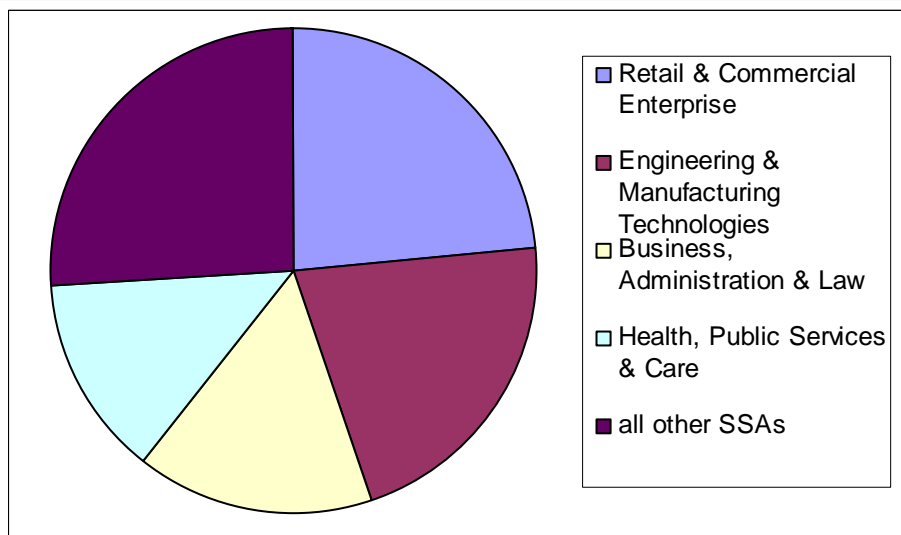
Figure 5: Apprenticeship starts by age, 2007/08



Source: WbL ILR P10 2007/08

- > Just over half of apprenticeship starts made by SW residents are in the 16-18 category. There is considerable in-region variation around this average, however, with almost two thirds of starts being by 16-18 year olds in Plymouth and South Gloucestershire, and less than half in Dorset and Torbay.

Figure 6: South West residents starting apprenticeships by SSA, 2007/08

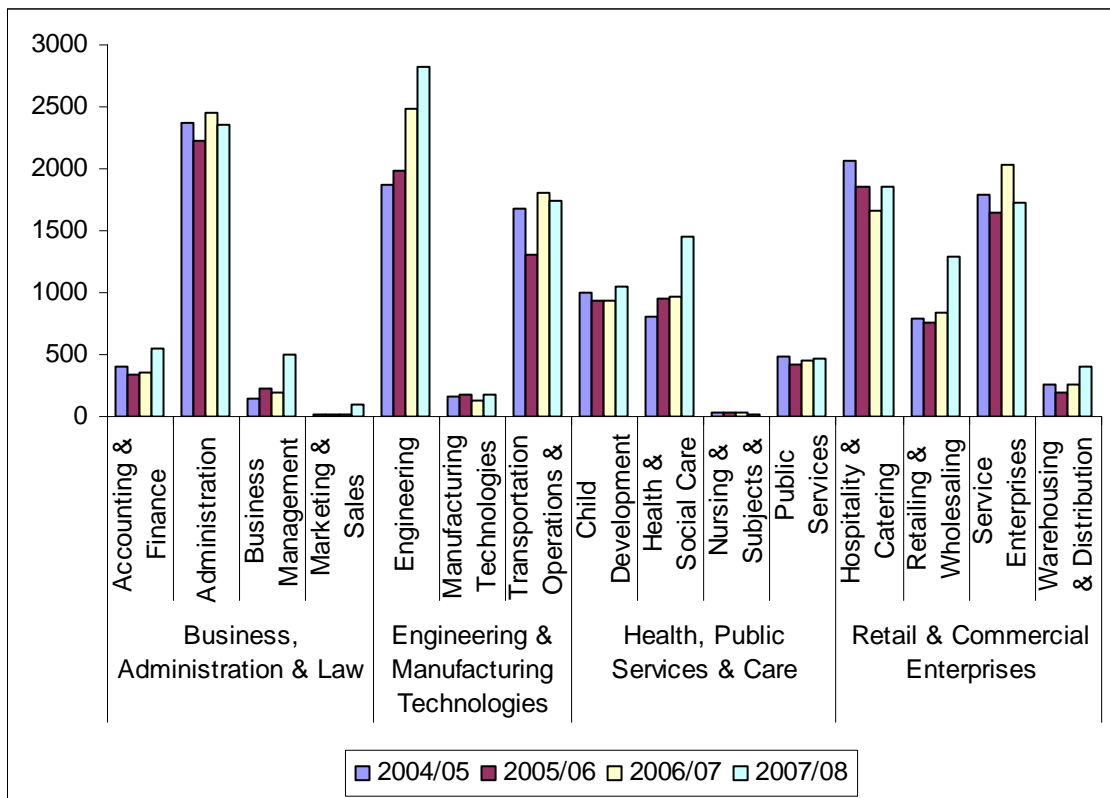


Source: WbL ILR P10 2007/08

- > Four [1st tier] Sector subject areas account for three quarters of starts. These are:
 - o Retail & Commercial Enterprise 24%
 - o Engineering & Manufacturing Technology 21%
 - o Business Administration & Law 16%
 - o Health, Public Services & Care 13%.
- > Six SSAs account for less than 5% of starts.

- > There is wide variation in the volumes and rates of growth recorded for different SSAs, with Engineering & Manufacturing Technology growing by 1,000 [28%] whilst Arts, Media & Publishing fell by 50, or 7%.

Figure 7: South West residents starting apprenticeships by largest four SSAs (subdivided), 2007/08



Source: WbL ILR P12 2004/05, WbL ILR P12 2005/06, WbL ILR P12 2006/07, WbL ILR P10 2007/08

- > Important sub-divisions of the largest 4 SSAs are:
 - > Business, Administration & Law.
 - > Two thirds of starts in this SSA are in Administration, which is static.
 - > Engineering & Manufacturing Technologies.
 - > This SSA is dominated by Engineering [which is growing at around 12% per year] and Transportation operations & maintenance, which is static.
 - > Health, public services & care.
 - > This SSA is largely composed of Child development & well-being [which is static] and Health & Social care, which is growing fast.
 - > Retail & Commercial Enterprises.
 - > This SSA is roughly evenly split between Hospitality & catering and Service enterprises [both of which are static] and Retailing & wholesaling, which is growing fast.

- > There are more starts on level 2 provision than on level 3 provision in all the SSAs listed in this section.

Table 1: South West apprenticeship provision management by SSA tier 1, 2007/08

SSA Tier 1	SW LLSC	other LLSC	NES	not known
Agriculture, Horticulture and Animal Care	486	199	0	0
Arts, Media and Publishing	1	0	3	0
Business, Administration and Law	2008	1029	351	109
Construction, Planning and the Built Environment	1893	38	993	0
Education and Training	65	0	0	0
Engineering and Manufacturing Technologies	2552	630	1562	2
Health, Public Services and Care	1801	637	541	16
Information and Communication Technology	159	45	859	4
Leisure, Travel and Tourism	219	241	204	0
Retail and Commercial Enterprise	2367	2268	622	15
Not defined	236	118	81	1
Grand Total	11787	5205	5216	147

Source: WbL ILR P10 2007/08

Table 2: South West apprenticeship provision management by SSA tier 2, 2007/08

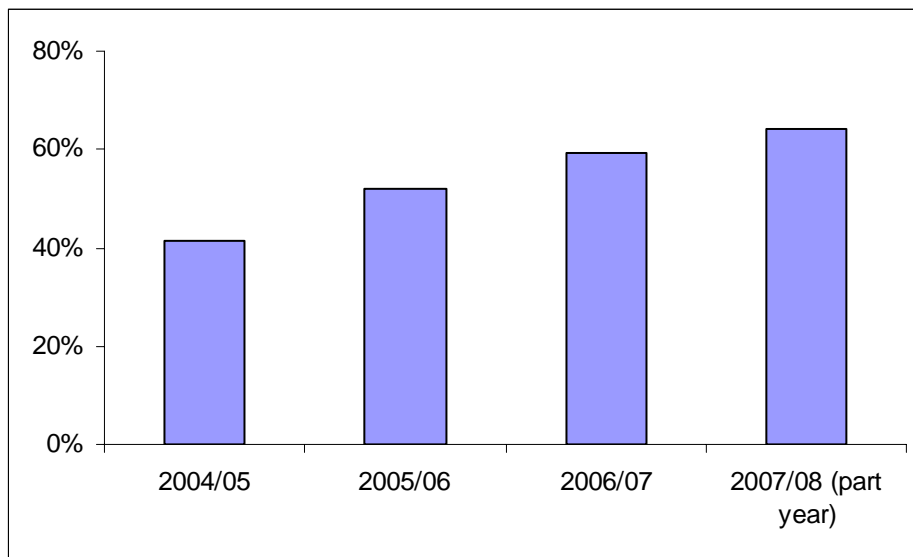
SSA Tier 2	SW LLSC	other LLSC	NES	not known
Building and Construction	1893	38	993	0
Engineering	1500	103	1220	0
Administration	1219	831	265	34
Hospitality and Catering	660	1021	174	0
Transportation Operations and Maintenance	900	516	320	2
Service Enterprises	1369	328	24	0
Health and Social Care	1017	345	73	16
Retailing and Wholesaling	244	904	135	7
Child Development and Well Being	762	291	0	0
ICT Practitioners	55	35	859	0
Sport, Leisure and Recreation	219	231	139	0
Accounting and Finance	507	43	0	0
Business Management	281	150	42	29
Public Services	0	0	468	0
Not defined	236	118	81	1
Warehousing and Distribution	94	15	289	8
Animal Care and Veterinary Science	178	173	0	0
Manufacturing Technologies	152	11	22	0
Agriculture	159	2	0	0
Horticulture and Forestry	138	23	0	0
ICT for Users	104	10	0	4
Marketing and Sales	1	5	44	46
Travel and Tourism	0	10	65	0
Direct Learning Support	65	0	0	0
Nursing and Subjects and Vocations Allied to Medicine	22	1	0	0
Environmental Conservation	11	1	0	0

Crafts, Creative Arts and Design	1	0	3	0
Grand Total	11787	5205	5216	147

Source: WbL ILR P10 2007/08

- > Around a quarter of apprenticeship provision in the South West is managed from a local part of the LSC that is outside the region. A further quarter is managed by the National Employer Service.
- > Between a third and a half of starts in the region's two largest second tier SSAs [Engineering and construction] are managed by the National Employer Service.

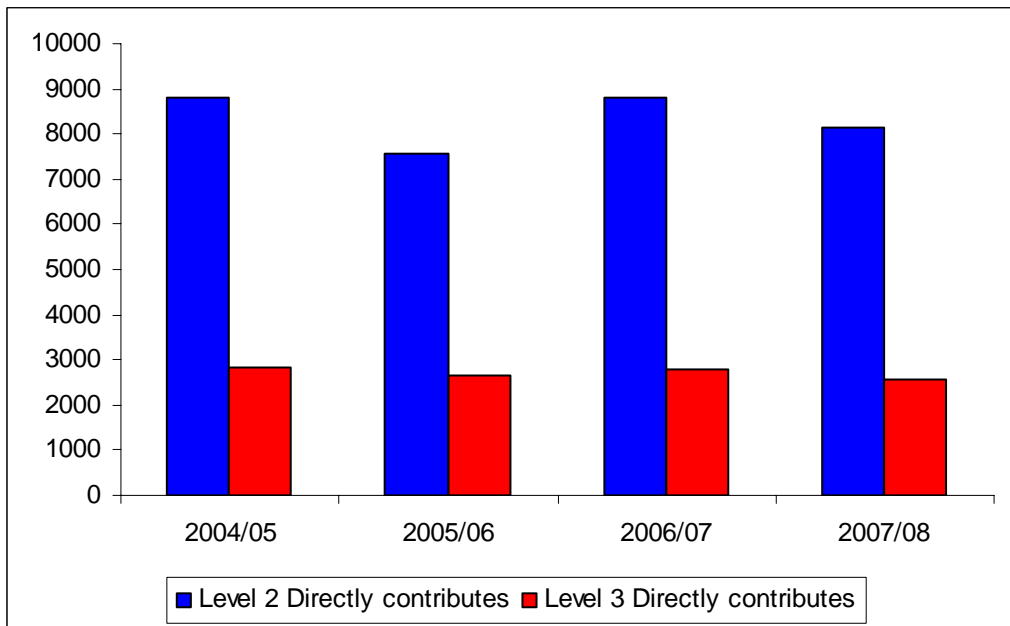
Figure 8: All ages apprenticeships framework success rates



Source: WbL ILR P12 2004/05, WbL ILR P12 2005/06, WbL ILR P12 2006/07, WbL ILR P10 2007/08

- > Since 2004/05, apprenticeship framework success rate trends increased by more than 20 percentage points.

Figure 9: Number of 16-18 year old South West residents starting apprenticeships by level



Source: WbL ILR P12 2004/05, WbL ILR P12 2005/06, WbL ILR P12 2006/07, WbL ILR P10 2007/08

- > The total number of 16-18 residents starting apprenticeships fell by 900 [or 8%] between 2004/05 and 2007/08.
- > The fastest rate of reduction was at level 3.
- > Around three quarters of starts were at level 2.

Table 3: Number of 16-18 year old South West residents starting apprenticeships by SSA

SSA Tier 1	2004/05	2005/06	2006/07	2007/08
Agriculture, Horticulture and Animal Care	492	404	497	450
Arts, Media and Publishing	26	16	6	3
Business, Administration and Law	1337	1237	1225	1122
Construction, Planning and the Built Environment	1872	1319	2324	1942
Education and Training	4	6	6	16
Engineering and Manufacturing Technologies	2784	2451	2886	2877
Health, Public Services and Care	1197	1082	1051	990
Information and Communication Technology	494	706	462	334
Leisure, Travel and Tourism	309	269	277	296
Preparation for Life and Work	17	0	0	0
Retail and Commercial Enterprise	2835	2486	2743	2488
Science and Mathematics	0			
Not defined	238	235	162	184
Grand Total	11605	10211	11639	10702

Source: WbL ILR P12 2004/05, WbL ILR P12 2005/06, WbL ILR P12 2006/07, WbL ILR P10 2007/08

- > In terms of sector subject area, three [1st tier] SSAs [Engineering & manufacturing technology, Construction, planning & the built environment and Retail & commercial enterprise] account for over two thirds of all starts by SW resident 16-18 year olds.

- > The greatest volume of increase between 2004/05 and 2007/08 was in Construction, planning & the built environment; and the greatest decrease in Retail and commercial enterprise.

Creator Pete Gisborne
Job title Research Team
Email Pete.gisborne@lsc.gov.uk
Phone 0117 372 6458
Date created October 2008
Document ref. G:\Shared\Research\strategic analysis 08\yp participation\Strategic Analysis 2008 - Young people participation report-oct2008.doc
LSC office **LSC South West Region**
Regional Office
St Lawrence House 29-31 Broad Street Bristol BS1 2HF
T 0117 372 6401 **F** 0117 372 6433 **www.lsc.gov.uk**