

FE success rates

October 2008



Leading learning and skills

Information Service

Purpose: This document forms the 'FE success rates' section of the South West Strategic Analysis 2008. The Strategic Analysis is the annual 'stock-take' analysis and considers labour market intelligence, performance information and Government policy to develop a full strategic picture of current education and training marketplace. The analysis is supported by national skills research (including Skills in England Report 2007, National Employer Skills Survey and Working Futures). The stock-take provides the intelligence to confirm our strategies and priorities.

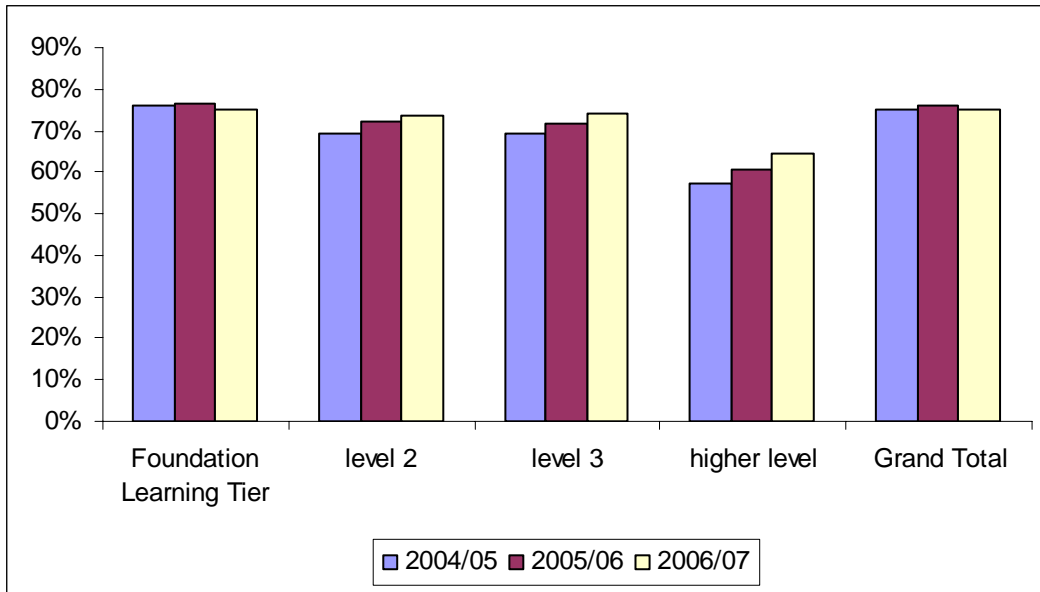
Theme: FE success rates

Origin: Pete Gisborne, Regional Research Manager, Learning, Planning and Performance Directorate, South West Regional Office

Issue: 1

Review: Revision of data to be completed August 2009

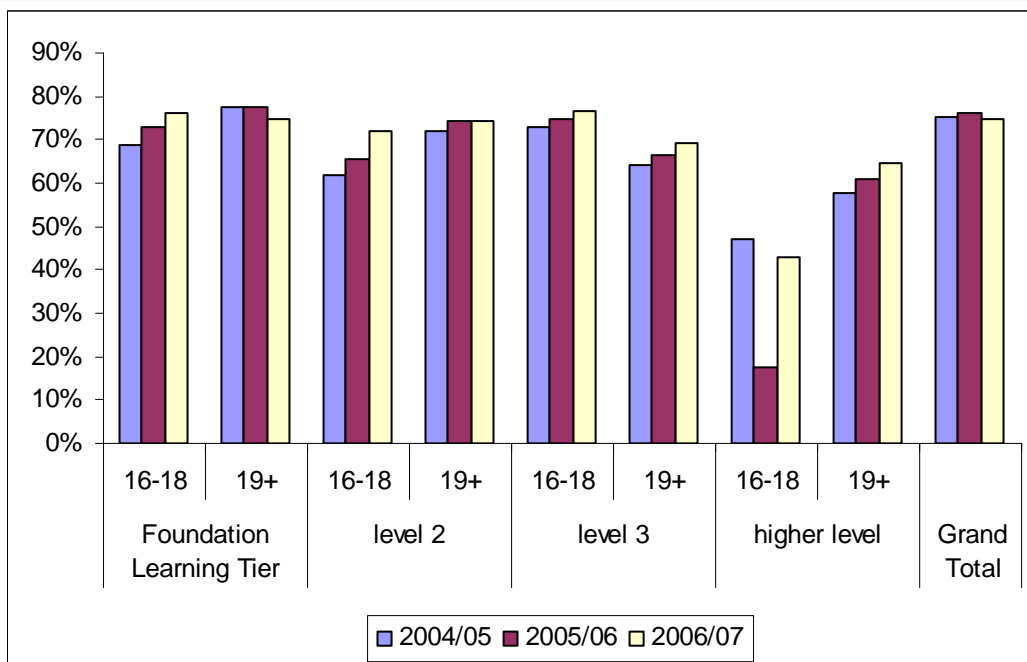
Figure 1: Overall FE success rates for SW providers



Source: ILR F05 2004/05, ILR F05 2005/06, ILR F05 2006/07

- > Overall FE success rates have remained largely static between 2004 and 2007.
- > However, this is largely due to a decrease in success rates for the foundation learning tier.
- > Increases of 4%, 5% and 7% have been achieved for provision at levels 2, 3 and higher.
- > Success rates are highest for foundation level provision and lowest for provision at levels higher than level 3.

Figure 2: FE success rates for SW providers, by age



Source: ILR F05 2004/05, ILR F05 2005/06, ILR F05 2006/07

- > When age-bands are considered, the increase in success rate has been fastest for level 2 at age 16-18, where a 10% increase has been achieved. The increase for adults at the same level has been more modest at 2%.
- > A decrease in success rate has only been observed for the adults on foundation learning tier provision and young people on level 4+ provision, neither of which contribute significantly to the LSC's PSA targets.
- > There is considerable in-region variation in FE success rates. 16-18 success rates are higher and increasing faster than the national average in Torbay, Bristol and S Gloucestershire. They are lower and increasing more slowly in Bath & NE Somerset, Poole and Swindon, although when only levels 2 and 3 are considered, there is an upward trend in each of these areas.
- > Adult success rates vary similarly, with S Gloucestershire, Torbay and Swindon having rates which are above, and growing faster than the regional average. Adult rates in Plymouth, N Somerset and Poole are below the regional average and are rising at a slower rate. If provision other than that at levels 2 & 3 is excluded, Plymouth shows an increasing adult success rate.

Annex

Table A1: Overall FE success rates for SW providers

Level	2004/05	2005/06	2006/07
Foundation Learning Tier	75.9%	76.6%	75.0%
level 2	69.3%	72.0%	73.6%
level 3	69.3%	71.8%	74.2%
higher level	57.5%	60.6%	64.6%
Grand Total	75.0%	76.2%	74.8%

Source: ILR F05 2004/05, ILR F05 2005/06, ILR F05 2006/07

Table A2: FE success rates for SW providers by age

Level	Age	2004/05	2005/06	2006/07
Foundation Learning Tier	16-18	68.9%	73.1%	76.2%
	19+	77.4%	77.5%	74.6%
level 2	16-18	61.8%	65.7%	72.2%
	19+	72.1%	74.5%	74.3%
level 3	16-18	72.9%	74.8%	76.5%
	19+	64.1%	66.6%	69.4%
higher level	16-18	47.2%	17.6%	42.9%
	19+	57.6%	60.9%	64.7%
Grand Total		75.0%	76.2%	74.8%

Source: ILR F05 2004/05, ILR F05 2005/06, ILR F05 2006/07

Table A3: FE success rates for SW providers by age and local authority area

Age Band	Authority	2004/05	2005/06	2006/07
16-18	Bath and NE Somerset	68.7%	67.5%	69.1%
	Bournemouth			
	City of Bristol	67.3%	69.4%	77.1%
	Cornwall	72.0%	74.1%	76.4%
	Devon	69.4%	71.8%	74.6%
	Dorset	59.8%	67.7%	73.5%
	Gloucestershire	72.2%	72.8%	74.3%
	North Somerset	70.3%	69.8%	75.1%
	Plymouth	70.4%	72.3%	75.5%
	Poole	64.9%	67.7%	68.4%
	Somerset	76.1%	79.2%	81.3%
	South Gloucestershire	63.6%	67.1%	77.0%
	Swindon	66.1%	70.1%	69.4%
	Torbay	68.0%	77.4%	78.5%
Wiltshire	64.0%	68.8%	70.6%	
16-18 Total		69.6%	72.5%	75.4%
19+	Bath and NE Somerset	70.1%	74.3%	72.0%
	Bournemouth			
	City of Bristol	76.3%	78.2%	72.9%
	Cornwall	80.5%	81.7%	75.9%
	Devon	68.8%	70.7%	70.0%
	Dorset	74.3%	73.6%	74.6%
	Gloucestershire	79.2%	81.4%	74.4%
	North Somerset	79.3%	81.8%	73.2%
	Plymouth	78.4%	77.8%	72.2%
	Poole	78.7%	72.8%	73.2%
	Somerset	79.9%	81.3%	79.0%
	South Gloucestershire	71.6%	67.6%	80.3%
	Swindon	78.3%	78.0%	78.8%
	Torbay	76.0%	82.1%	81.4%
Wiltshire	71.9%	71.5%	70.9%	
19+ Total		77.0%	77.9%	74.5%
Grand Total		75.0%	76.2%	74.8%

Source: ILR F05 2004/05, ILR F05 2005/06, ILR F05 2006/07

Creator Pete Gisborne
Job title Regional Research Manager
Email Pete.gisborne@lsc.gov.uk
Phone 0117 372 6458
Date created October 2008
Document ref. G:\Shared\Research\strategic analysis 08\yp participation\Strategic Analysis 2008 - Young people participation report-oct2008.doc
LSC office **LSC South West Region**
Regional Office
St Lawrence House 29-31 Broad Street Bristol BS1 2HF
T 0117 372 6401 **F** 0117 372 6433 **www.lsc.gov.uk**