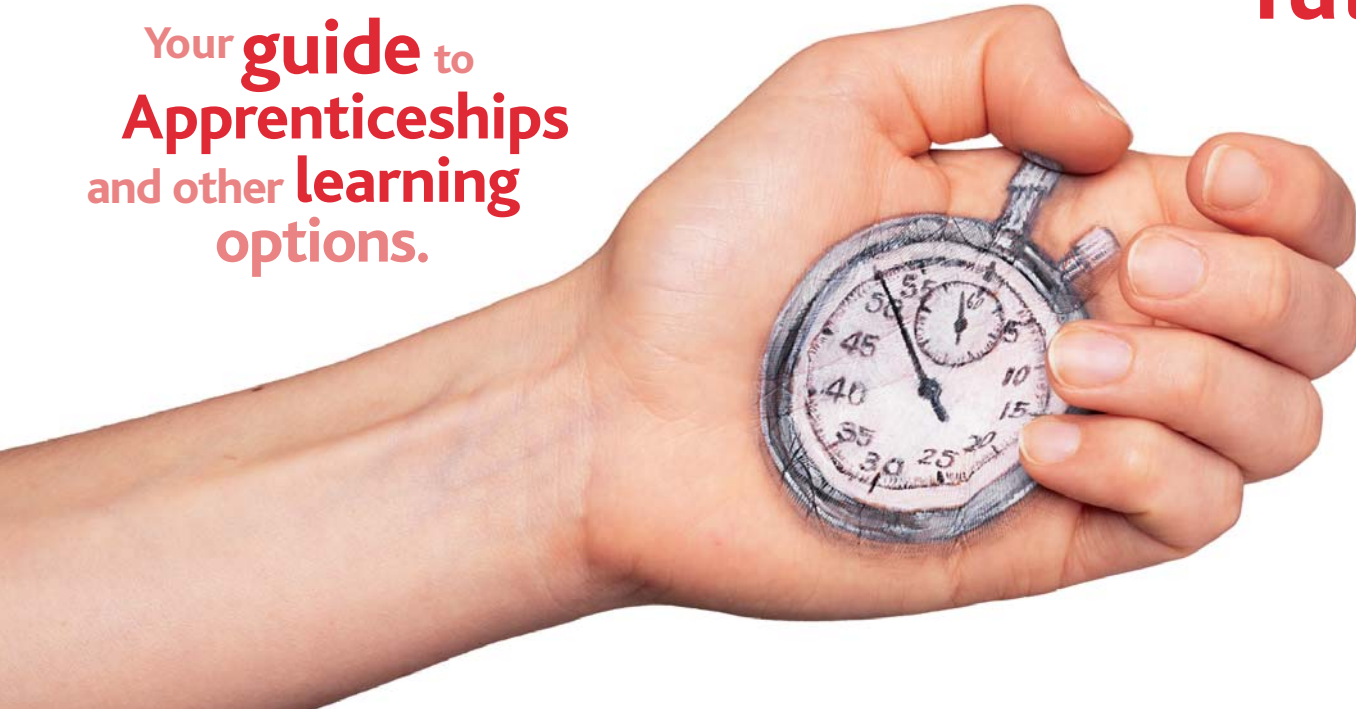


Our  
future.  
It's in  
our hands.

# Steps to Success 2008

Now's the time  
to **think** about your  
**future**

Your **guide** to  
**Apprenticeships**  
and other **learning**  
**options.**



# Welcome

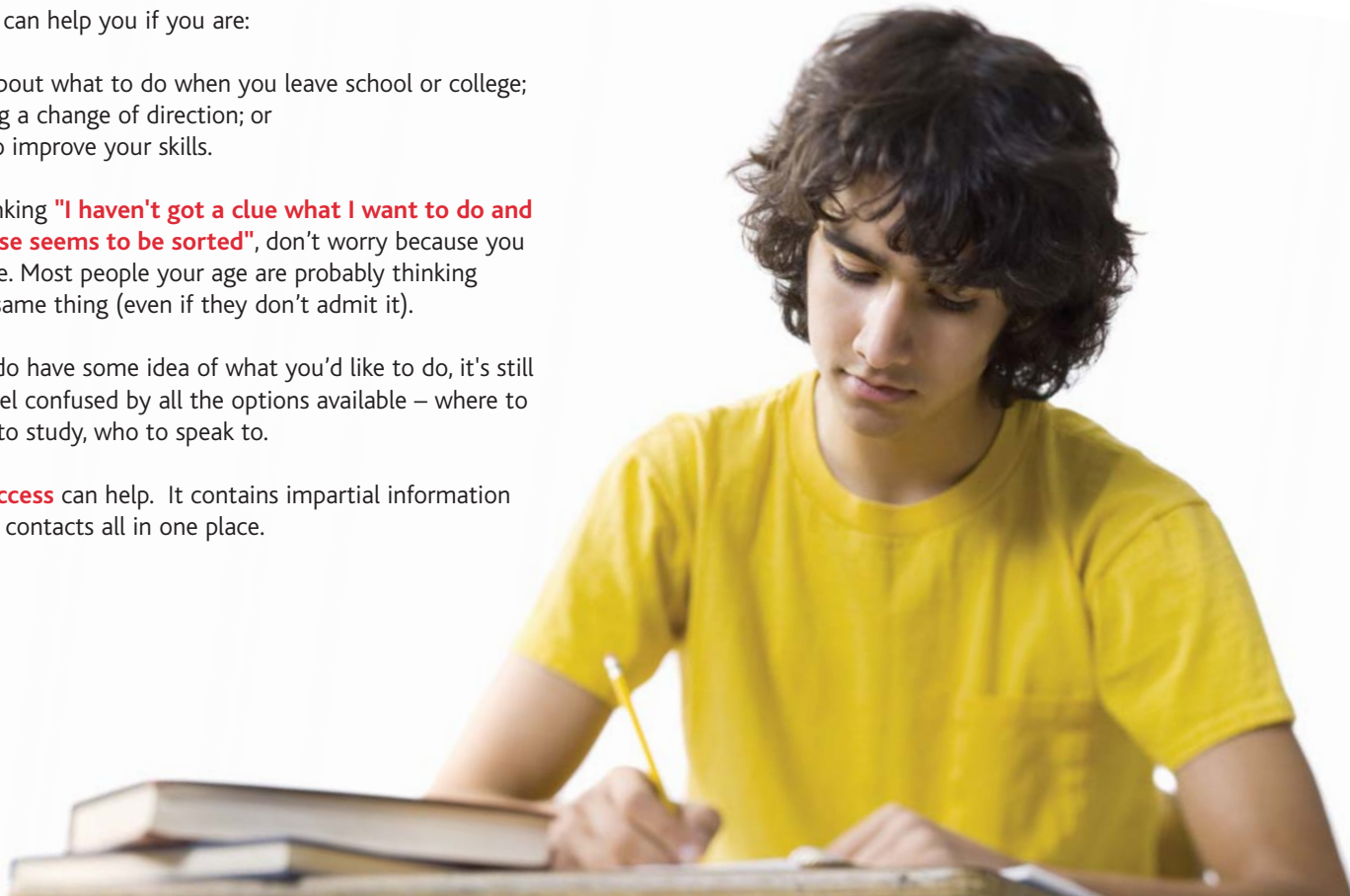
This booklet can help you if you are:

- thinking about what to do when you leave school or college;
- considering a change of direction; or
- wanting to improve your skills.

If you're thinking "**I haven't got a clue what I want to do and everyone else seems to be sorted**", don't worry because you are not alone. Most people your age are probably thinking exactly the same thing (even if they don't admit it).

Even if you do have some idea of what you'd like to do, it's still normal to feel confused by all the options available – where to study, what to study, who to speak to.

**Steps to Success** can help. It contains impartial information and relevant contacts all in one place.



# Contents

## Step 1: Planning Your Future

The Choices

Which Career?

Staying in Learning

04

04

05

05

## Step 2: Deciding What and Where to Learn

14-19 Area Prospectuses

Types of Qualifications

- AS and A-Levels

- Apprenticeships

- Entry to Employment (e2e)

- GCSEs

- National Vocational Qualifications (NVQs)

- The Diploma

- Vocationally Related Qualifications (VRQs)

Qualification Levels

06

06

07

07

08

09

10

11

12

13

14

## Step 3: Financial Help

Education Maintenance Allowance (EMA)

Learner Support Funds

National Minimum Wage

Care to Learn

15

15

15

16

16

## Step 4: Getting Advice

Connexions

nextstep

Other Sources of Advice

18

18

19

19

## Step 5: Getting Started

Contact Details

- e2e Work-based Learning Providers

- Further Education Colleges

- Independent Specialist Colleges

- School Sixth Forms

- Independent Schools

- Sixth Form Colleges

- Apprenticeship Work-based Learning Providers

23

23

23

26

27

28

33

35

36

## Learning Opportunities

43

# Step 1: Planning Your Future

Don't panic! Planning your future might sound scary but it doesn't have to be. The best place to start is to ask yourself a few questions.

## Start with school/college

- How do/did you feel about your time at school/college?
- What subjects are/were you good at?
- What subjects do/did you enjoy most?
- What projects and assignments are you proud of?
- Do you like learning new things?
- Do you like learning by studying or by doing?

## Now think about your personality

- What are your strengths?
- Do you get on well with people?
- Are you practical?
- Do you work better on your own or in a team?

These questions should give you a better idea about the kind of person you are and the kind of things you like doing. This will be useful when you start to think about what you might want to do in the future.

## The Choices

It might help to think about your future choices after school/college as being in two broad areas:

- Carry on studying or training full-time.
- Start work with training.

Whatever path you choose might depend on how you answered the earlier questions. If you want to carry on with your education full-time, you need to think about the different options that are available to you – the types of courses on offer and where you would like to go to study them. There's more about these options later in the booklet.

If you decide to get a job then consider one where you'll get further training and qualifications (such as an Apprenticeship). Research shows that the more qualifications you have, the more money you are likely to earn in the future.

### Information Point

For help to identify your skills and find out what jobs might interest you go to:

[www.learn-direct-advice.co.uk/helpwithyourcareer/skills](http://www.learn-direct-advice.co.uk/helpwithyourcareer/skills)



## Which Career?

There's nothing wrong with carrying on with your education just because you haven't decided what kind of work you want to do yet. But sooner or later you will have to consider which career path you would like to follow. You're likely to spend a large part of your life at work, so it's a good idea to start finding out about different types of jobs.

Some careers are really tough to get into, so being realistic is important. Sport and music, along with careers like acting and modelling, are professions where only the most talented succeed.


Think about jobs that interest you. Do you have a particular career in mind? And if so, do you know what qualifications, skills or experience will you need?

If you're not sure what you want to do, good places to start are:

### Information Point

For information and resources about career options go to:  
[www.connexions-direct.com](http://www.connexions-direct.com)

To find out about specific jobs, qualifications, skills, working hours and salaries for different careers go to:  
[www.connexions-direct.com/jobs4u](http://www.connexions-direct.com/jobs4u)



## Staying in Learning

It's worth bearing in mind just how important a good education is. What you do at this stage of your life can affect you later on.

Today, everyone needs a minimum set of qualifications to get on in life. With five GCSEs at grade A\* – C, an Apprenticeship, or equivalent qualification, you are more likely to get a better job and earn more. Without this minimum set of qualifications your options in life may be more limited. For example, did you know that:

- Those without the minimum set of qualifications are more likely to be unemployed.
- By 2010 very few jobs will be open to those without the minimum set of qualifications.
- You could miss out on up to £4,000 extra salary a year if you do not have the minimum set of qualifications.

### Information Point

For information about learning go to:  
[www.lsc.gov.uk/inourhands](http://www.lsc.gov.uk/inourhands)



# Step 2: Deciding What and Where to Learn

After following Step 1 – Planning Your Future, you should have:

- An idea of the type of person you are.
- Some ideas of the type of career you'd like to follow.
- An understanding of how having a good education can really help you get on in life.

This section is about what and where you can learn.

## 14-19 Area Prospectuses

Choosing which subjects and qualifications to study can seem daunting. But don't panic! There's lots of information and advice to help you choose what's right for you.

One of the best places to start is your local 14-19 Area Prospectus, where you can find out about all the courses and qualifications available in your area. The table opposite lists the website addresses of all the North East 14-19 Area Prospectuses.

Area	Prospectus Website Address
Darlington	<a href="http://www.futures4meindarlington.com">www.futures4meindarlington.com</a>
Durham	<a href="http://www.help4teens.co.uk">www.help4teens.co.uk</a>
Gateshead	<a href="http://www.logicat16.co.uk">www.logicat16.co.uk</a>
Hartlepool	<a href="http://www.pools1419.net">www.pools1419.net</a>
Middlesbrough	<a href="http://www.next4me.co.uk">www.next4me.co.uk</a>
Newcastle upon Tyne	<a href="http://www.cap1419.co.uk/newcastle">www.cap1419.co.uk/newcastle</a>
Northumberland	<a href="http://www.cap1419.co.uk/northumberland">www.cap1419.co.uk/northumberland</a>
North Tyneside	<a href="http://www.get-it-sorted.org.uk">www.get-it-sorted.org.uk</a>
Redcar and Cleveland	<a href="http://rc.futures4me.co.uk">http://rc.futures4me.co.uk</a>
South Tyneside	<a href="http://www.cap1419.co.uk/southtyneside">www.cap1419.co.uk/southtyneside</a>
Stockton-on-Tees	<a href="http://www.stockton.1419.org.uk">www.stockton.1419.org.uk</a>
Sunderland	<a href="http://www.sun1419.net">www.sun1419.net</a>

### Information Point

To access all the 14-19 Area Prospectuses go to:

[www.dcsf.gov.uk/prospectus](http://www.dcsf.gov.uk/prospectus)



## Types of Qualifications

There are lots of different types of qualifications you can do and places where you can study. You may even be able to study at a combination of different locations. Each one is different, so you will need to decide which you think would suit you best.

The tables that follow give you an overview of some of the main qualifications available, where they can be studied and where they could lead.

Qualification	What are they?	Where can I study?	Where can I get more information?	Where it can lead
AS and A-Levels	<ul style="list-style-type: none"> <li>• Courses where a single subject is studied in depth.</li> <li>• Most involve a combination of exams and coursework.</li> <li>• Also available in applied subjects e.g. engineering and health and social care.</li> <li>• Three or four AS subjects are usually taken in the first year and three carried on as A2 subjects in the second year.</li> <li>• Optional extended project available from September 2008.</li> </ul>	<ul style="list-style-type: none"> <li>• Further education college</li> <li>• School sixth form</li> <li>• Sixth form college</li> <li>• Work-based learning provider (A-Levels in applied subjects)</li> </ul>	<ul style="list-style-type: none"> <li>• 14-19 Area Prospectus – see page 06</li> <li>• <a href="http://www.connexions-direct.com">www.connexions-direct.com</a></li> </ul>	<ul style="list-style-type: none"> <li>• Higher education</li> <li>• Employment</li> </ul>

Qualification	What are they?	Where can I study?	Where can I get more information?	Where it can lead
Apprenticeships	<ul style="list-style-type: none"> <li>• Combine work with study so you can earn while you learn.</li> <li>• Two levels available – an Apprenticeship (equivalent to five good GCSEs) and an Advanced Apprenticeship (equivalent to two A-Levels).</li> <li>• Include an NVQ; Key Skills e.g. working with others, problem solving and communications and a Technical Certificate.</li> <li>• Available in a wide range of occupational areas.</li> <li>• Usually take between one and two years to complete.</li> <li>• High demand for places, so apply as early as possible.</li> </ul>	<ul style="list-style-type: none"> <li>• Further education college</li> <li>• Work-based learning provider</li> </ul>	<ul style="list-style-type: none"> <li>• 14-19 Area Prospectus – see page 06</li> <li>• <a href="http://www.apprenticeships.org.uk">www.apprenticeships.org.uk</a></li> <li>• <a href="http://www.connexions-direct.com">www.connexions-direct.com</a></li> </ul>	<ul style="list-style-type: none"> <li>• Higher education</li> </ul>

Qualification	What are they?	Where can I study?	Where can I get more information?	Where it can lead
<b>Entry to Employment (e2e)</b>	<ul style="list-style-type: none"> <li>• A flexible learning programme tailored to individual needs.</li> <li>• Develop the skills needed to progress onto an Apprenticeship, college, or employment with training.</li> <li>• Opportunity to learn in three core areas; basic and key skills, vocational development and personal and social development.</li> <li>• Includes work experience and also qualifications up to NVQ Level 1.</li> </ul>	<ul style="list-style-type: none"> <li>• Work-based learning provider</li> </ul>	<ul style="list-style-type: none"> <li>• 14-19 Area Prospectus – see page 06</li> <li>• <a href="http://www.connexions-direct.com">www.connexions-direct.com</a></li> </ul>	<ul style="list-style-type: none"> <li>• Apprenticeships</li> <li>• Further education</li> <li>• Employment</li> </ul>

Qualification	What are they?	Where can I study?	Where can I get more information?	Where it can lead
GCSEs	<ul style="list-style-type: none"> <li>• Usually taken at age 16 and studied over two years.</li> <li>• Cover a wide range of academic and vocational subjects.</li> <li>• Employers, universities and some colleges usually expect an applicant to have high grades (A* – C) in at least five of these.</li> <li>• Also available in a short course version – which usually take half the time to complete and count as half a GCSE.</li> </ul>	<ul style="list-style-type: none"> <li>• Further education college</li> <li>• School sixth form</li> <li>• Sixth form college</li> </ul>	<ul style="list-style-type: none"> <li>• 14-19 Area Prospectus – see page 06</li> <li>• <a href="http://www.connexions-direct.com">www.connexions-direct.com</a></li> </ul>	<ul style="list-style-type: none"> <li>• Apprenticeships</li> <li>• Further education</li> <li>• Employment</li> </ul>

Qualification	What are they?	Where can I study?	Where can I get more information?	Where it can lead
National Vocational Qualifications (NVQs)	<ul style="list-style-type: none"> <li>• Work-related qualifications which provide practical skills and knowledge in a specific industry.</li> <li>• Available in a wide range of occupational areas.</li> <li>• Five levels available depending on experience and qualifications.</li> <li>• Each level is divided into units of competence that cover different aspects of work.</li> </ul>	<ul style="list-style-type: none"> <li>• Further education college</li> <li>• Work-based learning provider</li> </ul>	<ul style="list-style-type: none"> <li>• 14-19 Area Prospectus – see page 06</li> <li>• <a href="http://www.connexions-direct.com">www.connexions-direct.com</a></li> </ul>	<ul style="list-style-type: none"> <li>• Apprenticeships</li> <li>• Further education</li> <li>• Higher education</li> <li>• Employment</li> </ul>

Qualification	What are they?	Where can I study?	Where can I get more information?	Where it can lead
<b>The Diploma</b>	<ul style="list-style-type: none"> <li>• A mixture of theoretical and practical learning.</li> <li>• An alternative to the GCSE or A-level route.</li> <li>• Can be started in years 10 and 12 or above.</li> <li>• Four different levels – Foundation, Higher, Advanced and a Progression Diploma.</li> <li>• The first five subject areas will be available in some areas from September 2008.</li> <li>• Will generally take two years if studied full-time.</li> </ul>	<ul style="list-style-type: none"> <li>• School sixth form</li> <li>• Sixth form college</li> <li>• Further education college</li> <li>• Work-based learning provider</li> </ul>	<ul style="list-style-type: none"> <li>• 14-19 Area Prospectus – see page 06</li> <li>• <a href="http://www.direct.gov.uk/diplomas">www.direct.gov.uk/diplomas</a></li> </ul>	<ul style="list-style-type: none"> <li>• Apprenticeships</li> <li>• Further education</li> <li>• Higher education</li> <li>• Employment</li> </ul>

Qualification	What are they?	Where can I study?	Where can I get more information?	Where it can lead
<b>Vocationally Related Qualifications (VRQs)</b>	<ul style="list-style-type: none"> <li>• Work-related qualifications that provide skills and knowledge in a wide range of vocational areas.</li> <li>• Vary in level and length.</li> <li>• Available from different awarding bodies e.g. City and Guilds, Edexcel and OCR.</li> <li>• Made up of units and modules assessed through practical assignments.</li> </ul>	<ul style="list-style-type: none"> <li>• Further education college</li> <li>• School sixth form</li> <li>• Sixth form college</li> <li>• Work-based learning provider</li> </ul>	<ul style="list-style-type: none"> <li>• 14-19 Area Prospectus – see page 06</li> <li>• <a href="http://www.connexions-direct.com">www.connexions-direct.com</a></li> </ul>	<ul style="list-style-type: none"> <li>• Apprenticeships</li> <li>• Further education</li> <li>• Higher education</li> <li>• Employment</li> </ul>

## Qualification Levels

With so many different qualifications available it can be difficult to understand how they relate to each other. Qualifications at the same level recognise similar degrees of knowledge, skills and understanding – even though the subjects

studied may be different. The higher the level, the more advanced the qualification is. See the table below to find out the level of the different qualifications mentioned in this guide.

Qualification Level	Entry Level	Level 1	Level 2	Level 3	Level 4+
Examples of qualifications at this level	<ul style="list-style-type: none"> <li>e2e – Entry Level qualifications taken as part of an e2e programme</li> <li>Entry Level certificates at Levels 1, 2 or 3</li> </ul>	<ul style="list-style-type: none"> <li>Foundation Diploma</li> <li>e2e – Level 1 qualifications taken as part of an e2e programme</li> <li>5 GCSEs at grades D – G</li> <li>NVQ Level 1</li> <li>VRQ Level 1</li> </ul>	<ul style="list-style-type: none"> <li>Apprenticeship</li> <li>Higher Diploma</li> <li>5 GCSEs at grades A* – C</li> <li>NVQ Level 2</li> <li>VRQ Level 2</li> </ul>	<ul style="list-style-type: none"> <li>Advanced Apprenticeship</li> <li>2 A-levels</li> <li>Advanced Diploma</li> <li>NVQ Level 3</li> <li>VRQ Level 3</li> </ul>	<ul style="list-style-type: none"> <li>Higher National Certificates (HNC)</li> <li>Higher National Diploma (HND)</li> <li>Degree</li> <li>Foundation Degree</li> <li>NVQ Levels 4 and 5</li> <li>Postgraduate Qualifications</li> </ul>

# Step 3: Financial Help

## Education Maintenance Allowance (EMA)

If you are aged between 16 and 18 and stay in learning, you may be eligible to receive up to £30 per week. It's called the Education Maintenance Allowance, or EMA for short.

The money which EMA could give you means you'll be able to concentrate on enjoying your course without worrying so much about money. Bonus payments are also available if you make good progress.

The course can be up to a Level 3 at school sixth form, sixth form college, further education college, a Programme-led Apprenticeship (this is when you're on an Apprenticeship but you're not yet employed) or an e2e programme.

If you start an e2e programme on or after 30th June 2008, you will be entitled to £30 per week EMA regardless of your annual household income. For all other types of courses the exact weekly amount you'll receive will depend on your annual household income which must be below £30,810 (this level may change in April 2008).

### Information Point

For information about EMA call 0808 10 16219 or go to:  
[www.direct.gov.uk/ema](http://www.direct.gov.uk/ema)

## Learner Support Funds

Discretionary Learner Support Funds are available in colleges and sixth forms to help with learning costs. The funds can be used to help with:

- Financial hardship and emergencies.
- Childcare costs.
- Accommodation costs, if your course is too far away for you to travel everyday.
- Travel costs to attend your course or training.
- Essential course-related equipment, such as books, equipment and field trips.

### Information Point

For more information about Learner Support Funds go to:  
[www.direct.gov.uk/moneytolearn](http://www.direct.gov.uk/moneytolearn)

## Care to Learn

If you are a young parent, Care to Learn can help pay for your childcare and travel costs while you're learning.

The subject or course you take is entirely up to you and you can choose whether you want to learn at a school, college or with a work-based learning provider.

### Information Point

For information about Care to Learn call 0845 600 2809 or go to: [www.direct.gov.uk/moneytolearn](http://www.direct.gov.uk/moneytolearn)

## National Minimum Wage

If you are employed how much you get paid will depend on your employer. However, there is a National Minimum Wage which your employer has a legal duty to pay you.



## National Minimum Wage Structure

### Aged 16-17 – Young Worker's Rate

£3.40 per hour from 1 October 2007

### Aged 18-21 – Development Rate

£4.60 per hour from 1 October 2007

### Aged 22 and over – Main Rate

£5.52 per hour from 1 October 2007

#### Information Point

For information on the National Minimum Wage call 0845 6000 678 or go to: [www.direct.gov.uk/pay](http://www.direct.gov.uk/pay)



- Apprentices under the age of 19, or over 19 and in the first 12 months of their Apprenticeship are exempt from the National Minimum Wage. However, your employer must pay you at least £80 a week.



# Step 4: Getting Advice

## Connexions

If you would like more advice on learning and careers, you can speak to a Connexions Personal Adviser (PA).

You can contact Connexions PAs in local Connexions Centres, at your local school or college and at local community and youth groups.

Visit [www.connexions-direct.com](http://www.connexions-direct.com), freephone **0808 0013219** or contact your local office (see below) to make an appointment.

### Connexions Centres in **County Durham**

There are centres in Bishop Auckland, Chester-le-Street, Consett, Durham, Peterlee, Seaham and Stanley.

Visit [www.help4teens.co.uk](http://www.help4teens.co.uk) for individual centre contact details and opening times.

### Connexions Centres in **Northumberland**

There are centres in Alnwick, Amble, Ashington, Bedlington, Berwick-upon-Tweed, Blyth, Cramlington, Hexham, Morpeth and Prudhoe.

Visit [www.connexions-northumberland.org.uk](http://www.connexions-northumberland.org.uk) for individual centre contact details and opening times.

### Connexions Centres in **Tees Valley**

There are centres in Darlington, Hartlepool, Middlesbrough, Redcar and Stockton.

Visit [www.connexions-direct.com](http://www.connexions-direct.com) for individual centre contact details and opening times.

### Connexions Centres in **Tyne and Wear**

There are centres in Gateshead, Houghton-le-Spring, Newcastle, North Shields, South Shields, Sunderland and Washington.

Visit [www.connexions-tw.co.uk](http://www.connexions-tw.co.uk) for individual centre contact details and opening times.

## nextstep

nextstep offers information on learning and work to all adults aged 20 and over. Whether you want to improve your career prospects, get a qualification or just make the most of your job – nextstep can help.

nextstep advisers can help you discover your learning needs, tell you about what support is available and help you decide which training is best for you.

For more information visit [www.nextstep.org.uk](http://www.nextstep.org.uk), or contact one of the following local offices:

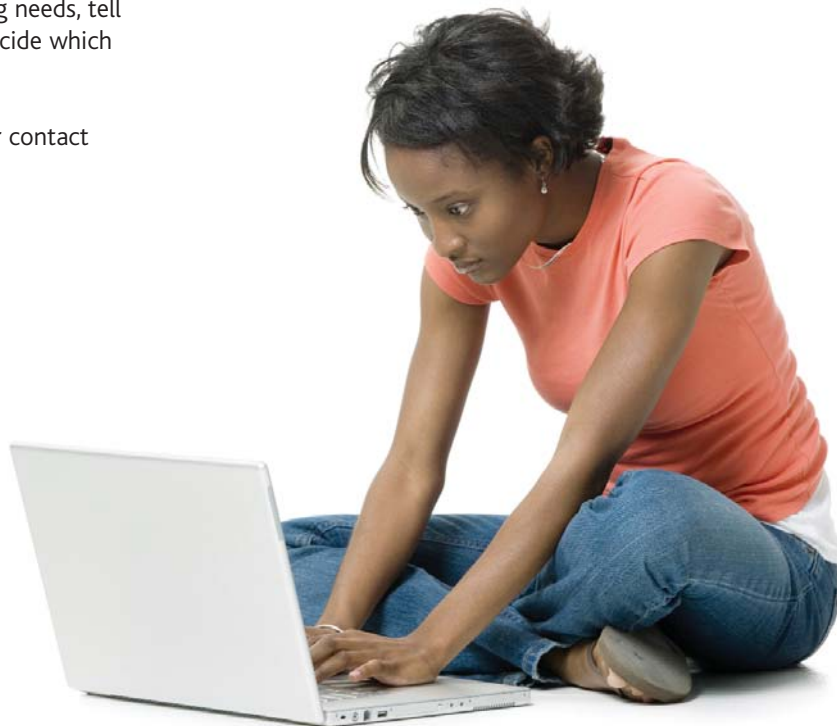
**County Durham** Tel: 01388 776911  
[www.nextstepcountydurham.org.uk](http://www.nextstepcountydurham.org.uk)

**Northumberland** Tel: 0800 0730708  
[www.nextstepnorthumberland.org.uk](http://www.nextstepnorthumberland.org.uk)

**Tees Valley** Tel: 01642 358099  
[www.nextstepte山谷.org.uk](http://www.nextstepte山谷.org.uk)

**Tyne and Wear** Tel: 0800 0730708  
[www.nextsteptyneandwear.org.uk](http://www.nextsteptyneandwear.org.uk)

If you are aged 19 or over, you may be eligible to receive an Adult Learning Grant of up to £30 a week to help with the cost of studying. To find out more about this and other financial support that may be available speak to your nextstep adviser or visit [www.direct.gov.uk/adultlearning](http://www.direct.gov.uk/adultlearning)



## Other Sources of Advice

As well as Connexions, you should also:

- Talk to your parents.
- Talk to your friends.
- Talk to your teachers, particularly your careers teacher.
- Visit your school careers library.
- Do your own research – some useful websites are listed in this section.

### Job Hunting and Current Vacancies

#### Jobcentre Plus

[www.jobcentreplus.gov.uk](http://www.jobcentreplus.gov.uk)

#### Jobs North East

[www.jobsnortheast.co.uk](http://www.jobsnortheast.co.uk)

#### Monster

[www.monster.co.uk](http://www.monster.co.uk)

#### Reed

[www.reed.co.uk](http://www.reed.co.uk)



## **Careers Information**

### **Apprenticeships**

[www.apprenticeships.org.uk](http://www.apprenticeships.org.uk)

### **Connexions Direct**

[www.connexions-direct.com](http://www.connexions-direct.com)

### **Connexions Durham**

[www.help4teens.org](http://www.help4teens.org)

### **Connexions Northumberland**

[www.connexions-northumberland.org.uk](http://www.connexions-northumberland.org.uk)

### **Connexions Tees Valley**

[www.connexions-direct.com](http://www.connexions-direct.com)

### **Connexions Tyne and Wear**

[www.connexions-tw.co.uk](http://www.connexions-tw.co.uk)

### **jobs4u careers database**

[www.connexions-direct.com/jobs4u](http://www.connexions-direct.com/jobs4u)

### **learndirect**

[www.learndirect-advice.co.uk](http://www.learndirect-advice.co.uk)

### **LSC Skills Campaign**

[www.lsc.gov.uk/inourhands](http://www.lsc.gov.uk/inourhands)

## **Higher Education**

### **Aim Higher**

[www.aimhigher.ac.uk](http://www.aimhigher.ac.uk)

### **Durham University**

[www.dur.ac.uk](http://www.dur.ac.uk)

### **Newcastle University**

[www.newcastle.ac.uk](http://www.newcastle.ac.uk)

### **Northumbria University**

[www.northumbria.ac.uk](http://www.northumbria.ac.uk)

### **University of Sunderland**

[www.sunderland.ac.uk](http://www.sunderland.ac.uk)

### **University of Teesside**

[www.tees.ac.uk](http://www.tees.ac.uk)

### **UCAS**

[wwwucas.ac.uk](http://wwwucas.ac.uk)

## Course Listings

### 14-19 Area Prospectus

See page 6

### learndirect

[www.learndirect.co.uk](http://www.learndirect.co.uk)

## Learner Finance

### Directgov

[www.direct.gov.uk/studentfinance](http://www.direct.gov.uk/studentfinance)

[www.direct.gov.uk/moneytolearn](http://www.direct.gov.uk/moneytolearn)

### EMA

[www.direct.gov.uk/ema](http://www.direct.gov.uk/ema)

## Self-Employment Help and Advice

### Prince's Trust

[www.princes-trust.org.uk](http://www.princes-trust.org.uk)

## Working Overseas

### UK NARIC

[www.naric.org.uk](http://www.naric.org.uk)

## Equality

### Directgov

[www.direct.gov.uk](http://www.direct.gov.uk)

### Equality North East

[www.equality-ne.co.uk](http://www.equality-ne.co.uk)

### Skill: National Bureau for Students with Disabilities

[www.skill.org.uk](http://www.skill.org.uk)

### Transition Information Network

[www.after16.org.uk](http://www.after16.org.uk)

# Step 5: Getting Started

This section gives contact details for the schools, colleges and work-based learning providers in the North East region that offer learning opportunities to people over the age of 16.

To find out about the full range of courses and qualifications they each offer, you should refer to your local 14-19 Area Prospectus, see page 06, or contact the organisation directly.

## Contact Details

### e2e Work-based Learning Providers

County Durham		
Bishop Auckland College	01388 443000	<a href="http://www.bacoll.ac.uk">www.bacoll.ac.uk</a>
CFBT Include	01388 776993	<a href="http://www.cfbt.com/inclusion/includehome.aspx">www.cfbt.com/inclusion/includehome.aspx</a>
Derwentside College	01207 585900	<a href="http://www.derwentside.ac.uk">www.derwentside.ac.uk</a>
Developing Initiatives for Support in the Community (DISC)	01325 313888	<a href="http://www.disc-vol.org.uk">www.disc-vol.org.uk</a>
East Durham and Houghall Community College	0191 5860030	<a href="http://www.edhcc.ac.uk">www.edhcc.ac.uk</a>
New College Durham	0191 3754000	<a href="http://www.newdur.ac.uk">www.newdur.ac.uk</a>
S & D Training	01388 777648	<a href="http://www.sdtraining-ltd.com">www.sdtraining-ltd.com</a>
Sedgefield Borough Council	01388 816166	<a href="http://www.sedgefield.gov.uk">www.sedgefield.gov.uk</a>
Skill Training	01207 231293	<a href="http://www.skilltraining.uk.com">www.skilltraining.uk.com</a>
Springboard Training	0191 5185020	<a href="http://www.springboard-ne.org">www.springboard-ne.org</a>

## Northumberland

Azure Charitable Enterprises	01670 717106	<a href="http://www.azure-charitable.co.uk">www.azure-charitable.co.uk</a>
B-Skill Ltd	0191 4250238	<a href="http://www.b-skill.co.uk">www.b-skill.co.uk</a>
Buzz Learning	01670 852244	<a href="http://www.buzzlearning.co.uk">www.buzzlearning.co.uk</a>
CSV (part of Springboard Sunderland Trust)	01670 54444	<a href="http://www.csv.org.uk">www.csv.org.uk</a> & <a href="http://www.springboard-ne.org">www.springboard-ne.org</a>
Igen: Future Pathways	01665 713561/ 07919921590	<a href="http://www.igengroup.co.uk">www.igengroup.co.uk</a>
Northumberland County Council (Northumberland Training Agency)	01670 359959	<a href="http://www.northumberland.gov.uk/nta">www.northumberland.gov.uk/nta</a>
Rathbone	0191 2345566	<a href="http://www.rathboneuk.org">www.rathboneuk.org</a>

## Tyne and Wear

Barnardos Palmersville Training (e2e in North Tyneside)	0191 2701133	<a href="http://www.palmersvilletraining.co.uk">www.palmersvilletraining.co.uk</a>
B-Skill Ltd (e2e in South Tyneside)	0191 4250238	<a href="http://www.b-skill.co.uk">www.b-skill.co.uk</a>
Oakfield Solutions (e2e in Newcastle)	0191 2133670	<a href="http://www.newcastle.e2e-tw.co.uk">www.newcastle.e2e-tw.co.uk</a>
Rathbone (e2e in Gateshead)	0191 2345566	<a href="http://www.rathboneuk.org">www.rathboneuk.org</a>
Springboard Sunderland Trust (e2e in Sunderland)	0191 5640291	<a href="http://www.springboard-ne.org">www.springboard-ne.org</a>

Tees Valley		
Accent Community Partnership	01642 226548	<a href="http://www.accentgroup.org">www.accentgroup.org</a>
Darlington Borough Council Training Centre	01325 388123	<a href="http://www.darlington.gov.uk">www.darlington.gov.uk</a>
Darlington College	01325 503050	<a href="http://www.darlington.ac.uk">www.darlington.ac.uk</a>
Education and Youth Services Ltd	01342 466372	<a href="http://www.eysuk.org.uk">www.eysuk.org.uk</a>
Five Lamps Organisation	01642 628191	<a href="http://www.fivelamps.org.uk">www.fivelamps.org.uk</a>
Football First	01642 451824	<a href="http://www.mfcic.co.uk">www.mfcic.co.uk</a>
Hartlepool College of Further Education	01429 295111	<a href="http://www.hartlepoolfe.ac.uk">www.hartlepoolfe.ac.uk</a>
JHP Training	01429 860211	<a href="http://www.jhp-group.com">www.jhp-group.com</a>
Middlesbrough Borough Council	01642 201922	<a href="http://www.middlesbrough.gov.uk">www.middlesbrough.gov.uk</a>
NACRO	01642 615554	<a href="http://www.nacro.org.uk">www.nacro.org.uk</a>
Redcar and Cleveland Borough Council	01287 644206	<a href="http://www.redcar-cleveland.gov.uk">www.redcar-cleveland.gov.uk</a>
Redcar and Cleveland College	01642 473132	<a href="http://www.cleveland.ac.uk">www.cleveland.ac.uk</a>
Safe in Tees Valley	01642 226411	<a href="http://www.safeinteesvalley.org">www.safeinteesvalley.org</a>
Shape Training (Cleveland Youth Association)	01642 282222	<a href="http://www.shapetraining.co.uk">www.shapetraining.co.uk</a>
Stockton on Tees Borough Council	01642 527573	<a href="http://www.stockton.gov.uk">www.stockton.gov.uk</a>
Stockton Riverside College	01642 865400	<a href="http://www.stockton.ac.uk">www.stockton.ac.uk</a>

## Further Education Colleges

County Durham		
Bishop Auckland College	01388 443000	<a href="http://www.bacoll.ac.uk">www.bacoll.ac.uk</a>
Derwentside College	01207 585900	<a href="http://www.derwentside.ac.uk">www.derwentside.ac.uk</a>
East Durham and Houghall Community College	0191 5182222	<a href="http://www.edhcc.ac.uk">www.edhcc.ac.uk</a>
New College Durham	0191 3754000	<a href="http://www.newdur.ac.uk">www.newdur.ac.uk</a>
Northumberland		
Northumberland College	01670 841200	<a href="http://www.northland.ac.uk">www.northland.ac.uk</a>
Tees Valley		
Cleveland College of Art and Design	01642 288000	<a href="http://www.ccad.ac.uk">www.ccad.ac.uk</a>
Darlington College	01325 503050	<a href="http://www.darlington.ac.uk">www.darlington.ac.uk</a>
Hartlepool College of Further Education	01429 295000	<a href="http://www.hartlepoolfe.ac.uk">www.hartlepoolfe.ac.uk</a>
Middlesbrough College	01642 333333	<a href="http://www.mbro.ac.uk">www.mbro.ac.uk</a>
Redcar and Cleveland College	01642 473132	<a href="http://www.cleveland.ac.uk">www.cleveland.ac.uk</a>
Stockton Riverside College	01642 865400	<a href="http://www.stockton.ac.uk">www.stockton.ac.uk</a>

Tyne and Wear		
City of Sunderland College	0191 5116060	<a href="http://www.citysun.ac.uk">www.citysun.ac.uk</a>
Gateshead College	0191 4900300	<a href="http://www.gateshead.ac.uk">www.gateshead.ac.uk</a>
Newcastle College	0191 2004000	<a href="http://www.ncl-coll.ac.uk">www.ncl-coll.ac.uk</a>
South Tyneside College	0191 4273500	<a href="http://www.stc.ac.uk">www.stc.ac.uk</a>
Tyne Metropolitan College	0191 2295000	<a href="http://www.tynemet.ac.uk">www.tynemet.ac.uk</a>

### Independent Specialist Colleges

Northumberland		
Dilston College	01434 632692	<a href="http://www.dilstoncollege.com">www.dilstoncollege.com</a>

Tyne and Wear		
ESPA Colleges	0191 5102611	<a href="http://www.espa.org.uk">www.espa.org.uk</a>
Northern Counties College	0191 2815821	<a href="http://www.percyhedley.org.uk/ncc">www.percyhedley.org.uk/ncc</a>
Thornbeck College (Tyne & Wear Autistic Society)	0191 5102038	<a href="http://www.tawas.org.uk">www.tawas.org.uk</a>

\* Referrals to independent specialist colleges must be made through the Connexions service.

## School Sixth Forms

County Durham		
Durham Gilesgate Sports College and Sixth Form Centre	0191 3847505	<a href="http://www.dgsc.org.uk">www.dgsc.org.uk</a>
Durham Johnston Comprehensive School	0191 3843887	<a href="http://www.durham-johnston.durham.sch.uk">www.durham-johnston.durham.sch.uk</a>
Ferryhill Business and Enterprise College	01740 651554	<a href="http://www.ferryhill.durham.sch.uk">www.ferryhill.durham.sch.uk</a>
Framwellgate School Durham	0191 3866628	<a href="http://www.fram.durham.sch.uk">www.fram.durham.sch.uk</a>
King James I Community College	01388 603388	<a href="http://atschool.eduweb.co.uk/kjames.durham">http://atschool.eduweb.co.uk/kjames.durham</a>
Park View Community School	0191 3882248	<a href="http://www.parkview.org.uk">www.parkview.org.uk</a>
Roseberry Sports & Community College	0191 3700300	<a href="http://www.roseberry.durham.sch.uk">www.roseberry.durham.sch.uk</a>
Sedgefield Community College	01740 625300	<a href="http://www.sedgefieldcommunitycollege.co.uk">www.sedgefieldcommunitycollege.co.uk</a>
Spennymoor School	01388 815634	<a href="http://www.spennymoorschool.com">www.spennymoorschool.com</a>
St Bede's Catholic Comprehensive School	0191 5862291	<a href="http://www.st-bedes.durham.sch.uk">www.st-bedes.durham.sch.uk</a>
St Bede's Catholic Comprehensive School & Sixth Form College	01207 520424	<a href="http://www.stbedes.durham.sch.uk">www.stbedes.durham.sch.uk</a>
St Johns R C Comprehensive School	01388 603246	<a href="http://www.stjohnsrc.org.uk">www.stjohnsrc.org.uk</a>
St Leonard's R C Comprehensive School	0191 3848575	<a href="http://www.st-leonards.durham.sch.uk">www.st-leonards.durham.sch.uk</a>
Teesdale School Science College and Sixth Form Centre	01833 638166	<a href="http://www.teesdaleschool.co.uk">www.teesdaleschool.co.uk</a>
The Hermitage School	0191 3887161	<a href="http://www.thehermitage-lc.net">www.thehermitage-lc.net</a>

**County Durham (continued)**

Wellfield Community School	01429 838413	<a href="http://www.wellfield.durham.sch.uk">www.wellfield.durham.sch.uk</a>
Wolsingham School and Community College	01388 527302	<a href="http://www.wolsinghamcollege.durham.sch.uk">www.wolsinghamcollege.durham.sch.uk</a>
Woodham Community Technology College	01325 300328	<a href="http://www.woodham.durham.sch.uk">www.woodham.durham.sch.uk</a>

**Northumberland**

Ashington Community High School	01670 812166	<a href="http://www.ashingtonhigh.northumberland.sch.uk">www.ashingtonhigh.northumberland.sch.uk</a>
Astley Community High School	0191 2371505	<a href="http://www.astley.northumberland.sch.uk">www.astley.northumberland.sch.uk</a>
Bedlingtonshire Community High School	01670 822625	<a href="http://www.bedlingtonshire.northumberland.sch.uk">www.bedlingtonshire.northumberland.sch.uk</a>
Berwick Community High School	01289 305083	<a href="http://www.berwickhighschool.co.uk">www.berwickhighschool.co.uk</a>
Blyth Community College	01670 798100	<a href="http://www.bcc.uk.com">www.bcc.uk.com</a>
Coquet High School	01665 710636	<a href="http://www.coqueths.org">www.coqueths.org</a>
Cramlington Community High School	01670 712311	<a href="http://www.cchsonline.co.uk">www.cchsonline.co.uk</a>
Haydon Bridge Community High School & Sports College	01434 684422	<a href="http://www.haydonbridge.high.co.uk">www.haydonbridge.high.co.uk</a>
Hirst High Technology College	01670 816111	<a href="http://www.hirsthigh.org.uk">www.hirsthigh.org.uk</a>
Ponteland Community High School	01661 824711	<a href="http://www.pchs.northumberland.sch.uk">www.pchs.northumberland.sch.uk</a>
Prudhoe Community High School	01661 832486	<a href="http://www.pchs.org.uk">www.pchs.org.uk</a>

### Northumberland (continued)

Queen Elizabeth High School	01434 610300	<a href="http://www.qehs.net">www.qehs.net</a>
St Benet Biscop Catholic High School	01670 822795	<a href="http://www.st-benetbiscop.org.uk">www.st-benetbiscop.org.uk</a>
The Duchess's Community High School	01665 602166	<a href="http://www.duchess-alnwick.org.uk">www.duchess-alnwick.org.uk</a>
The King Edward VI School	01670 515415	<a href="http://www.kevi.info">www.kevi.info</a>

### Tyne and Wear

All Saints College	0191 2677036	<a href="http://www.allsaints.newcastle.sch.uk">www.allsaints.newcastle.sch.uk</a>
Benfield School	0191 2656091	<a href="http://www.benfield-school.co.uk">www.benfield-school.co.uk</a>
Burnside Business and Enterprise College	0191 2598500	<a href="http://www.burnside.n-tyneside.sch.uk">www.burnside.n-tyneside.sch.uk</a>
Cardinal Hume Catholic School	0191 4877638	<a href="http://www.cardinalhume.com">www.cardinalhume.com</a>
Churchill Community College	0191 2347200	<a href="http://www.churchillcommunitycollege.org">www.churchillcommunitycollege.org</a>
George Stephenson High School	0191 2008347	<a href="http://www.gshs.org.uk">www.gshs.org.uk</a>
Gosforth High School	0191 2851000	<a href="http://www.gosforthhigh.newcastle.sch.uk">www.gosforthhigh.newcastle.sch.uk</a>
Heaton Manor School	0191 2818486	<a href="http://www.heatonmanor.newcastle.sch.uk">www.heatonmanor.newcastle.sch.uk</a>
Heworth Grange Comprehensive School	0191 4212244	<a href="http://www.heworthgrange.org.uk">www.heworthgrange.org.uk</a>
Hookergate School	01207 542862	<a href="http://www.hookergate.gateshead.sch.uk">www.hookergate.gateshead.sch.uk</a>

## Tyne and Wear (continued)

Joseph Swan School	0191 4422000	<a href="http://www.josephswan.org.uk">www.josephswan.org.uk</a>
Kenton School	0191 2142200	<a href="http://www.kenton.newcastle.sch.uk">www.kenton.newcastle.sch.uk</a>
Longbenton Community College	0191 2007474	<a href="http://www.longbenton.org.uk">www.longbenton.org.uk</a>
Lord Lawson of Beamish School	0191 4334026	<a href="http://www.lordlawson.org.uk">www.lordlawson.org.uk</a>
Monkseaton Community High School	0191 2979700	<a href="http://www.monkseaton.org.uk">www.monkseaton.org.uk</a>
Ryton Comprehensive School	0191 4132113	<a href="http://www.rytoncomprehensive.co.uk">www.rytoncomprehensive.co.uk</a>
Sacred Heart High School	0191 2747373	<a href="http://www.sacredhearhighschool.org.uk">www.sacredhearhighschool.org.uk</a>
Seaton Burn Community College	0191 2361700	----
St Aidan's Catholic School	0191 5536073	<a href="http://www.sunderlandschools.org/staidans">www.sunderlandschools.org/staidans</a>
St Anthony's Girls' School	0191 5537700	<a href="http://www.st-anthonys-uk.org">www.st-anthonys-uk.org</a>
St Cuthberts High School	0191 2744510	<a href="http://www.st-cuthbertshigh.newcastle.sch.uk">www.st-cuthbertshigh.newcastle.sch.uk</a>
St Joseph's R C Comprehensive School	0844 4772500	<a href="http://www.stjosephs.s-tyneside.sch.uk">www.stjosephs.s-tyneside.sch.uk</a>
St Mary's R C Comprehensive School	0191 2668813	<a href="http://www.stmonline.net">www.stmonline.net</a>
St Robert of Newminster Catholic School & Sixth Form College	0191 2193810	<a href="http://www.strobertofnewminster.co.uk">www.strobertofnewminster.co.uk</a>
St Thomas More School	0191 4990111	<a href="http://www.stthomasmore.org.uk">www.stthomasmore.org.uk</a>
St Thomas More R C High School	0191 2588340	<a href="http://www.stmschool.org.uk">www.stmschool.org.uk</a>

### Tyne and Wear (continued)

Walbottle Campus Technology College	0191 2678221	<a href="http://www.walbottlecampus.newcastle.sch.uk">www.walbottlecampus.newcastle.sch.uk</a>
Walker Technology College	0191 2620911	<a href="http://www.walker.newcastle.sch.uk">www.walker.newcastle.sch.uk</a>
West Gate Community College	0191 2410200	<a href="http://www.westgate.newcastle.sch.uk">www.westgate.newcastle.sch.uk</a>
Whickham School	0191 4960026	<a href="http://www.whickhamschool.org">www.whickhamschool.org</a>
Whitley Bay High School	0191 2008800	<a href="http://www.whitleybayhighschool.org">www.whitleybayhighschool.org</a>

### Tees Valley

Carmel R C College	01325 254525	<a href="http://www.carmel.org.uk">www.carmel.org.uk</a>
Conyers School	01642 783253	<a href="http://www.conyers.stockton.sch.uk">www.conyers.stockton.sch.uk</a>
Egglescliffe School	01642 352570	<a href="http://www.egglescliffe.org.uk">www.egglescliffe.org.uk</a>
English Martyrs School and Sixth Form College	01429 273790	<a href="http://www.ems.hartlepool.sch.uk">www.ems.hartlepool.sch.uk</a>

## Independent Schools

County Durham		
Barnard Castle School	01833 690222	<a href="http://www.barnardcastleschool.org.uk">www.barnardcastleschool.org.uk</a>
Durham High School for Girls	0191 3843226	<a href="http://www.dhsfg.org.uk">www.dhsfg.org.uk</a>
Durham School	0191 3864783	<a href="http://www.durhamschool.co.uk">www.durhamschool.co.uk</a>

Northumberland		
Longridge Towers School	01289 307584	<a href="http://www.lts.org.uk">www.lts.org.uk</a>

Tyne and Wear		
Argyle House School	0191 5100726	<a href="http://www.argylehouseschool.co.uk">www.argylehouseschool.co.uk</a>
Central Newcastle High School	0191 2811768	<a href="http://www.newcastlehigh.gdst.net">www.newcastlehigh.gdst.net</a>
Dame Allan's Schools	0191 2750608	<a href="http://www.dameallans.co.uk">www.dameallans.co.uk</a>
Emmanuel College	0191 460 2099	<a href="http://www.emmanuelctc.org.uk">www.emmanuelctc.org.uk</a>
Grindon Hall Christian School	0191 5344444	<a href="http://www.grindonhall.com">www.grindonhall.com</a>
La Sagesse School	0191 2813474	<a href="http://www.lasagesse.org.uk">www.lasagesse.org.uk</a>
Newcastle upon Tyne Church High School	0191 2814306	<a href="http://www.churchhigh.com">www.churchhigh.com</a>

### Tyne and Wear (continued)

Royal Grammar School	0191 2815711	<a href="http://www.rgs.newcastle.sch.uk">www.rgs.newcastle.sch.uk</a>
Sunderland High School	0191 5674984	<a href="http://www.sunderlandhigh.co.uk">www.sunderlandhigh.co.uk</a>
The King's School	0191 2585995	<a href="http://www.kings-tyemouth.org.uk">www.kings-tyemouth.org.uk</a>
Westfield School	0191 2553980	<a href="http://www.westfield.newcastle.sch.uk">www.westfield.newcastle.sch.uk</a>

### Tees Valley

Hurworth House School	01325 720645	<a href="http://www.hurworthhouse.co.uk">www.hurworthhouse.co.uk</a>
Macmillan Academy	01642 800800	<a href="http://www.macmillan-academy.org.uk">www.macmillan-academy.org.uk</a>
Polam Hall School	01325 463383	<a href="http://www.polamhall.com">www.polamhall.com</a>
Teesside Preparatory & High School	01642 782095	<a href="http://www.teessidehigh.co.uk">www.teessidehigh.co.uk</a>
The King's Academy	01642 577577	<a href="http://www.emmanuelctc.org.uk">www.emmanuelctc.org.uk</a>
Yarm School	01642 786023	<a href="http://www.yarmschool.org">www.yarmschool.org</a>

## Sixth Form Colleges

Tees Valley		
Bede College	01642 808285	<a href="http://www.bede.ac.uk">www.bede.ac.uk</a>
Hartlepool Sixth Form College	01429 294444	<a href="http://www.hpoolsfc.ac.uk">www.hpoolsfc.ac.uk</a>
Prior Pursglove College	01287 280800	<a href="http://www.pursglove.ac.uk">www.pursglove.ac.uk</a>
Queen Elizabeth Sixth Form College	01325 461315	<a href="http://www.qeliz.ac.uk">www.qeliz.ac.uk</a>
St Mary's College	01642 814680	<a href="http://www.stmarys-sfc.ac.uk">www.stmarys-sfc.ac.uk</a>
Stockton Sixth Form College	01642 612611	<a href="http://www.stocktonsf.ac.uk">www.stocktonsf.ac.uk</a>

Tyne and Wear		
Bede Sixth Form Academy	0191 511 6300	<a href="http://www.citysun.ac.uk">www.citysun.ac.uk</a>
Usworth Sixth Form College	0191 511 6260	<a href="http://www.usworthsixthformcollege.ac.uk">www.usworthsixthformcollege.ac.uk</a>
St Peter's Sixth Form College	0191 511 6260	<a href="http://www.stpeterssixthformcollege.ac.uk">www.stpeterssixthformcollege.ac.uk</a>

## Apprenticeship Work-based Learning Providers

Here are contact details for the Apprenticeship work-based learning providers in the region. A list of the main occupational areas they each deliver is shown in the pull-out matrix in the back inside cover of this publication.

Learning Provider		
Access Training	0191 4874454	<a href="http://www.accesstraining.org">www.accesstraining.org</a>
Askham Bryan College	01904 772211	<a href="http://www.askham-bryan.ac.uk">www.askham-bryan.ac.uk</a>
Barnardos Palmersville Training	0191 2701133	<a href="http://www.palmersvilletraining.co.uk">www.palmersvilletraining.co.uk</a>
BEST	01753 531188	<a href="http://www.best-ltd.co.uk">www.best-ltd.co.uk</a>
Bishop Auckland College	01388 443000	<a href="http://www.bacoll.ac.uk">www.bacoll.ac.uk</a>
BL Hairdressing	0191 2619636	<a href="http://www.blhairdressing.co.uk">www.blhairdressing.co.uk</a>
British Print Industry Federation	01676 526056	<a href="http://www.britishprint.com">www.britishprint.com</a>
Carillion Construction (Gateshead)	0191 4699857	<a href="http://www.carillionplc.com">www.carillionplc.com</a>
Carillion Construction (Middlesbrough)	01642 245982	<a href="http://www.carillionplc.com">www.carillionplc.com</a>
Carillion Construction (North Shields)	0191 2961788	<a href="http://www.carillionplc.com">www.carillionplc.com</a>
Carillion Construction (Sunderland)	0191 5654940	<a href="http://www.carillionplc.com">www.carillionplc.com</a>
Carter and Carter Group	0870 6061936	<a href="http://www.carterandcartergroup.com">www.carterandcartergroup.com</a>

Learning Provider		
City of Sunderland ITEC	0191 5492842	<a href="http://www.sunderlanditec.com">www.sunderlanditec.com</a>
City of Sunderland Riverside Training	0191 5496511	<a href="http://www.sunderland.gov.uk/riversidettraining">www.sunderland.gov.uk/riversidettraining</a>
ConstructionSkills	0191 5163900	<a href="http://www.bconstructive.co.uk">www.bconstructive.co.uk</a>
Contemporary Education	01642 255035	<a href="http://www.contemporarysalons.com">www.contemporarysalons.com</a>
Darlington Borough Council	01325 388121	<a href="http://www.darlington.gov.uk">www.darlington.gov.uk</a>
Derwentside College	01207 585900	<a href="http://www.derwentside.ac.uk">www.derwentside.ac.uk</a>
Develop Training Ltd	0870 2404039	<a href="http://www.developtraining.co.uk">www.developtraining.co.uk</a>
Durham Business Club	0191 3884488	<a href="http://www.durhambusinessclub.co.uk">www.durhambusinessclub.co.uk</a>
Durham University	0191 3341649	<a href="http://www.dur.ac.uk/hr/training/apprenticeships">www.dur.ac.uk/hr/training/apprenticeships</a>
East Durham and Houghall Community College	0191 5188259/ 0191 3754712	<a href="http://www.edhcc.ac.uk">www.edhcc.ac.uk</a>
ETEC (Sunderland) Ltd	0191 5656414	<a href="http://www.etec.org.uk">www.etec.org.uk</a>
Future Strategies Consulting	0191 2628029	<a href="http://www.futurestrategies.co.uk">www.futurestrategies.co.uk</a>
Gateshead College (Apprenticeship Unit)	0191 4904636	<a href="http://www.gateshead.ac.uk">www.gateshead.ac.uk</a>
General Physics (UK)	0191 4914419	<a href="http://www.gpworldwide.com">www.gpworldwide.com</a>
HABIT Ltd	0191 5678685	<a href="http://www.habitr.com">www.habitr.com</a>
Hartlepool College of Further Education	01429 295000	<a href="http://www.hartlepoolfe.ac.uk">www.hartlepoolfe.ac.uk</a>

Learning Provider		
INTEC Business Colleges	01788 575090	<a href="http://www.getoncourse.net">www.getoncourse.net</a>
ITEC North East (County Durham)	01325 320052	<a href="http://www.itecne.co.uk">www.itecne.co.uk</a>
ITEC North East (Tees Valley)	01642 232550	<a href="http://www.itecne.co.uk">www.itecne.co.uk</a>
ITEC North East (Tyne and Wear)	0191 4913316	<a href="http://www.itecne.co.uk">www.itecne.co.uk</a>
JHP Training	01429 860211	<a href="http://www.jhptraining.com">www.jhptraining.com</a>
JTL	0800 0852308	<a href="http://www.jtltraining.com">www.jtltraining.com</a>
Kaplan Financial	0191 2329365	<a href="http://www.kaplanfinancial.co.uk">www.kaplanfinancial.co.uk</a>
Key Training (County Durham)	0191 3840187	<a href="http://www.keytraining.co.uk">www.keytraining.co.uk</a>
Key Training (Tyne and Wear)	0191 2618906	<a href="http://www.keytraining.co.uk">www.keytraining.co.uk</a>
MetTECH UK	0191 4280552	<a href="http://www.mettech.co.uk">www.mettech.co.uk</a>
Middlesbrough College	01642 298998	<a href="http://www.mbro.ac.uk">www.mbro.ac.uk</a>
Middlesbrough Council Work Based Learning Team	01642 201922	<a href="http://www.middlesbrough.gov.uk/apprentices">www.middlesbrough.gov.uk/apprentices</a>
Middlesbrough Council (For Business Administration Apprenticeships only)	01642 729678	<a href="http://www.middlesbrough.gov.uk">www.middlesbrough.gov.uk</a>
Milltech	0191 5100414	<a href="http://www.milltech-ltd.co.uk">www.milltech-ltd.co.uk</a>
Mobile Care Qualifications	0191 2653003	<a href="http://www.mcq.co.uk">www.mcq.co.uk</a>
NACRO	0191 2658164	<a href="http://www.nacro.org.uk">www.nacro.org.uk</a>

Learning Provider		
NEETA	0191 4900092	<a href="http://www.neeta-ltd.co.uk">www.neeta-ltd.co.uk</a>
NETA	01642 616936	<a href="http://www.neta.co.uk">www.neta.co.uk</a>
Newcastle College	0191 2004000	<a href="http://www.ncl-coll.ac.uk">www.ncl-coll.ac.uk</a>
New College Durham	0191 3754000	<a href="http://www.newdur.ac.uk">www.newdur.ac.uk</a>
Northern Rock	0191 2795761	<a href="http://www.northernrock.co.uk">www.northernrock.co.uk</a>
Northern & Yorkshire NHS Assessment Centre	01642 624073	-----
Northumberland College	01670 841200	<a href="http://www.northland.ac.uk">www.northland.ac.uk</a>
Northumberland Training Agency	01670 534530	<a href="http://www.northumberland.gov.uk/nta">www.northumberland.gov.uk/nta</a>
Northumbrian Trust Day Nurseries	01642 224450	<a href="http://www.rainbowtrainingcentre.co.uk">www.rainbowtrainingcentre.co.uk</a>
North East Chamber of Commerce (North of Region)	0191 5109090	<a href="http://www.necc.co.uk">www.necc.co.uk</a>
North East Chamber of Commerce (South of Region)	01642 655500	<a href="http://www.necc.co.uk">www.necc.co.uk</a>
North Tees & Hartlepool NHS Trust	01642 383255	<a href="http://www.northteesandhartlepool.nhs.uk">www.northteesandhartlepool.nhs.uk</a>
North Tyneside Training Services	0191 2006505	-----
Protocol Skills	0191 3783930	<a href="http://www.protocol-skills.co.uk">www.protocol-skills.co.uk</a>
Rathbone (Gateshead)	0191 4954830	<a href="http://www.rathboneuk.org">www.rathboneuk.org</a>
Rathbone (Newcastle)	0191 2345566	<a href="http://www.rathboneuk.org">www.rathboneuk.org</a>

Learning Provider		
Redcar and Cleveland College	01642 473132	<a href="http://www.cleveland.ac.uk">www.cleveland.ac.uk</a>
Rolls-Royce North East Training	0191 2565385	<a href="http://www.rrnetc.co.uk">www.rrnetc.co.uk</a>
S & D Training Ltd	01388 777648	<a href="http://www.sdtraining-ltd.com">www.sdtraining-ltd.com</a>
Saks and Midaswell Training	01642 224853	<a href="http://www.midaswelltraining.co.uk">www.midaswelltraining.co.uk</a>
Sedgefield Borough Council	01388 824084	<a href="http://www.sedgefield.gov.uk">www.sedgefield.gov.uk</a>
SETA Ltd	0191 4162860	<a href="http://www.seta.co.uk">www.seta.co.uk</a>
Shape Training	01642 282222	<a href="http://www.shapetraining.co.uk">www.shapetraining.co.uk</a>
Skill Training	01207 231293	<a href="http://www.skilltraining.uk.com">www.skilltraining.uk.com</a>
South Tees Hospitals NHS Trust	01642 854744	<a href="http://www.southtees.nhs.uk">www.southtees.nhs.uk</a>
South Tyneside College	0191 4273910	<a href="http://www.stc.ac.uk">www.stc.ac.uk</a>
Springboard Hartlepool	01429 287075	<a href="http://www.springboard-ne.org">www.springboard-ne.org</a>
Springboard Sunderland Trust (County Durham)	0191 5185020	<a href="http://www.springboard-ne.org">www.springboard-ne.org</a>
Springboard Sunderland Trust (Tyne and Wear)	0191 5155300	<a href="http://www.springboard-ne.org">www.springboard-ne.org</a>
Stockton Borough Council	01642 528261	<a href="http://www.stockton.gov.uk">www.stockton.gov.uk</a>
Stockton Riverside College	01642 865400	<a href="http://www.stockton.ac.uk">www.stockton.ac.uk</a>
Support Training	0191 4250238	<a href="http://www.support-training.co.uk">www.support-training.co.uk</a>

Learning Provider		
SW Durham Training	01325 313194	<a href="http://www.swdt.co.uk">www.swdt.co.uk</a>
TDR Training	0191 4911505	<a href="http://www.tdrtraining.co.uk">www.tdrtraining.co.uk</a>
TEAM Wearside	0191 5142799	<a href="http://www.teamwearside.co.uk">www.teamwearside.co.uk</a>
TTE Management Technical Training	01642 462266	<a href="http://www.tte.co.uk">www.tte.co.uk</a>
Tyne Metropolitan College	0191 2295000	<a href="http://www.tynemet.ac.uk">www.tynemet.ac.uk</a>
Tyne North Training	0191 2626860	<a href="http://www.tynenorthtraining.co.uk">www.tynenorthtraining.co.uk</a>
Tyneside Training Services	0191 2862919	<a href="http://www.tynesidetrainingservices.co.uk">www.tynesidetrainingservices.co.uk</a>
VT Training	0191 2567722	<a href="http://www.vtplc.com">www.vtplc.com</a>
Zodiac Training	0845 3308184	<a href="http://www.zodiactraining.co.uk">www.zodiactraining.co.uk</a>



# Learning Opportunities

Matrices of Apprenticeships and Advanced Apprenticeships

Learning Providers	Vocational Subject Areas													
	Agriculture, Horticulture and Environmental	Animal Care	Business Administration and Professional	Construction	Customer Service, Retailing and Warehousing	Engineering	Hair and Beauty	Health, Care and Public Services	Hospitality	IT Services and Development	Management	Manufacturing	Sport, Recreation and Travel	Transportation
Access Training			●		●	●					●	●		
Askham Bryan College	● ●	●												
Barnardo's Palmersville Training	●		●	●	●	●	●		●					
Best				● ● ● ●		● ● ● ●								
Bishop Auckland College			●	●		●		●	●	●			●	
BL Hairdressing							● ● ● ●							
British Print Industry Federation												● ● ● ●		
Carillion Construction				● ● ● ●										
Carter and Carter Group				●		●						●		
City of Sunderland ITEC			●		●				●					●
City of Sunderland Riverside Training	●			●		●								
ConstructionSkills				● ● ● ●										
Contemporary Education							●							
Darlington Borough Council			●	●		●		●						
Darlington College				●		●	●	●	●					
Derwentside College			●			●		●	●					
Develop Training						● ●								
Durham Business Club			●		●		●							
Durham University	●													
East Durham and Houghall Community College	●	●	●	●	●	●	●							
ETEC			●	●						●				●
FTC Kaplan			●											
Future Strategies Consulting								●	●					
Gateshead College			●	●		●	●		●			●	●	●
General Physics					●	● ●					●	● ●		
HABIT							●							
Hartlepool College of Further Education			●	●		●	●	●	●	●	●			
INTEC Business Colleges			●			●				●				
ITEC North East			● ● ●		● ● ● ●	● ● ● ●	●			● ● ● ●				
JHP Training			●		●			●	● ●		●			
Key Training			●	●	●	●				● ● ●	●			
MetTECH UK			●	●	●	●						●		
Middlesbrough College			●	●		●	●		●				●	
Middlesbrough Council	●		●			●		●						
Milltech			●		●	●								
Mobile Care Qualifications									●				●	
NACRO		●				●							●	
NEETA	●						●							
NETA					●	●								
New College Durham			●	●		●	●							
Newcastle College	●	●	●	●	●	●	●	●	●	●	●	●	●	●
North East Chamber of Commerce	●		● ● ● ●	● ● ● ●	● ● ● ●	● ● ● ●		●	● ● ● ●	● ● ● ●	●	● ● ● ●	●	
North Tyneside Training Services			●	●										
Northern Rock			●		●									
Northumberland College	●	●	●	●	●	●	●	●		●		●	●	
Northumberland Training Agency			●	●	●			●		●			●	
Northumbrian Trust Day Nurseries								●						
Protocol Skills			● ● ● ●		● ● ● ●				● ● ● ●		● ● ● ●			
Rathbone Training				●		●								
Redcar and Cleveland College			●	●			●			●				
Rolls-Royce North East Training						●						●		
S & D Training	●		●	●	●									
Saks & Midaswell Training							●							
Sedgefield Borough Council			●	●	●									
Shape Training								●	●					
Skill Training				●		●								
South Tees Hospitals NHS Trust			●					●						
South Tyneside College			●	●		●	●		●				●	
Springboard	● ● ●		● ● ●		●	●		●	● ● ●	●		● ●		
Stockton Borough Council	●		●	●				●	●					
Stockton Riverside College				●				●						
Support Training			●		●						●			
SW Durham Training			●	●	●	●	●			●	●	●	●	
TDR Training						●	●					●	●	
Team Wearside					●				●	●				
TTE Management Technical Training						●						●		
Tyne Metropolitan College								●	●					
Tyne North Training						●						●		
Tyneside Training Services				●		●								●
VT Training			● ● ● ●		● ● ● ●	● ● ● ●		● ● ● ●	● ● ● ●		● ● ● ●	● ● ● ●		
Zodiac Training			● ● ● ●		● ● ● ●	● ● ● ●		● ● ● ●	● ● ● ●	● ● ● ●	● ● ● ●	● ● ● ●		

# Apprenticeships Level 2

**Matrix of Apprenticeship Learning Provision**

Use the dot matrix to find the Apprenticeship subjects you are interested in and which learning providers deliver them. The colour-coded dots show the geographical areas covered by each learning provider and relate to the following:

● County Durham   
 ● Northumberland   
 ● Tees Valley   
 ● Tyne and Wear

Contact details for all the learning providers listed can be found on pages 36 to 41 of Steps to Success.

Learning Providers	Vocational Subject Areas													
	Agriculture, Horticulture and Environmental	Animal Care	Business Administration and Professional	Construction	Customer Service, Retailing and Warehousing	Engineering	Hair and Beauty	Health, Care and Public Services	Hospitality	IT Services and Development	Learning and Development	Management	Manufacturing	Sport, Recreation and Travel
Access Training			●		●	●						●		
Askham Bryan College	● ●	●												
Best				● ● ● ●		● ● ● ●								
Bishop Auckland College			●	●		●		●	●	●				
BL Hairdressing							● ● ● ●							
British Print Industry Federation													● ● ● ●	
Carillion Construction				● ● ● ●										
Carter and Carter Group													●	
City of Sunderland ITEC			●			●				●				●
City of Sunderland Riverside Training						●								
ConstructionSkills				● ● ● ●										
Contemporary Education							●							
Darlington Borough Council			●	●		●		●						
Darlington College				● ●		●		●	●					
Derwentside College			●	●		●	●	●	●					
Develop Training														
Durham Business Club			●		●		●							
Durham University			●	●		●				●			●	
East Durham and Houghall Community College	●		●		●	●	●							
EETEC			●		●					●				●
Future Strategies Consulting								●	●					
Gateshead College			●		●			●						●
General Physics					● ● ●									
HABIT								●						
Hartlepool College of Further Education			●	●		●	●	●		●	●			
INTEC Business Colleges			●			●						●		
ITEC North East			● ● ●		● ● ●		●			● ● ●				
JHP Training			●		●			● ● ●		●		●		
JTL Training				● ● ● ●		● ● ● ●								
Kaplan Financial			●											
Key Training			●		●	●				●	●	●	●	
MetTECH UK			●		●	●								
Middlesbrough College			●	●		●	●		●					
Middlesbrough Council	●		●					●						
Milltech			●			●								
Mobile Care Qualifications									●					
NEETA							●							
NETA						●								
New College Durham			●	●		●								
Newcastle College		●	●		●	●	●		●	●				
North East Chamber of Commerce	●		● ● ● ●	● ●	● ● ● ●	● ● ● ●	● ● ● ●	● ● ●	● ● ●	● ● ● ●		●	● ● ● ●	
North Tees & Hartlepool NHS Trust			●					●						
North Tyneside Training Services			●		●									
Northern & Yorkshire NHS Assessment Centre					●									
Northern Rock			●			●								
Northumberland College	●		●	●	●	●	●	●		●				●
Northumberland Training Agency			●	●	●					●				●
Northumbrian Trust Day Nurseries								●						
Protocol Skills			● ● ● ●		● ● ● ●				● ● ● ●					
Redcar and Cleveland College			●	●			●			●				
Rolls-Royce North East Training						●							●	
S & D Training	●		●		●									
Saks & Midaswell Training							●							
Sedgefield Borough Council			●	●	●									
SETA						●								
Shape Training								●	●					
Skill Training				●		●								
South Tees Hospitals NHS Trust			●					●						
South Tyneside College			●				●		●					
Springboard			● ● ●					●	● ● ●				● ●	
Stockton Borough Council			●	●				●	●					
Stockton Riverside College			●					●						
Support Training			●			●						●		
SW Durham Training			● ●		● ●	● ●				● ●	● ●	● ●	● ●	
TDR Training						● ●								
Team Wearside										●				
TTE Management Technical Training						●							●	
Tyne North Training						●								
Tyneside Training Services						●								
VT Training			● ● ● ●		● ● ● ●			● ● ● ●	● ● ● ●					
Zodiac Training			● ● ● ●		● ● ● ●			● ● ● ●				● ● ● ●		

# Advanced Apprenticeships Level 3

**Matrix of Advanced Apprenticeship Learning Provision**

Use the dot matrix to find the Advanced Apprenticeship subjects you are interested in and which learning providers deliver them. The colour-coded dots show the geographical areas covered by each learning provider and relate to the following:

● County Durham   
 ● Northumberland   
 ● Tees Valley   
 ● Tyne and Wear

Contact details for all the learning providers listed can be found on pages 36 to 41 of Steps to Success.

**Learning and Skills Council  
North East**

Moongate House  
5th Avenue Business Park  
Team Valley  
Gateshead  
Tyne and Wear  
NE11 OHF

T 0845 0194181  
F 0191 4926398  
[www.lsc.gov.uk](http://www.lsc.gov.uk)

Published by the Learning and Skills Council – February 2008.

Extracts from this publication may be used for non-commercial educational or training purposes, on condition that the source is acknowledged and the findings are not misrepresented. This document is available in electronic form on the Learning and Skills Council website: [www.lsc.gov.uk](http://www.lsc.gov.uk).

Available in other formats on request.

Publication enquiries: 0845 019 4181  
Publication reference: LSC-P-NER-080001

Funded by:



Leading learning and skills