

“ we help  
create a  
trained and  
qualified  
workforce ”

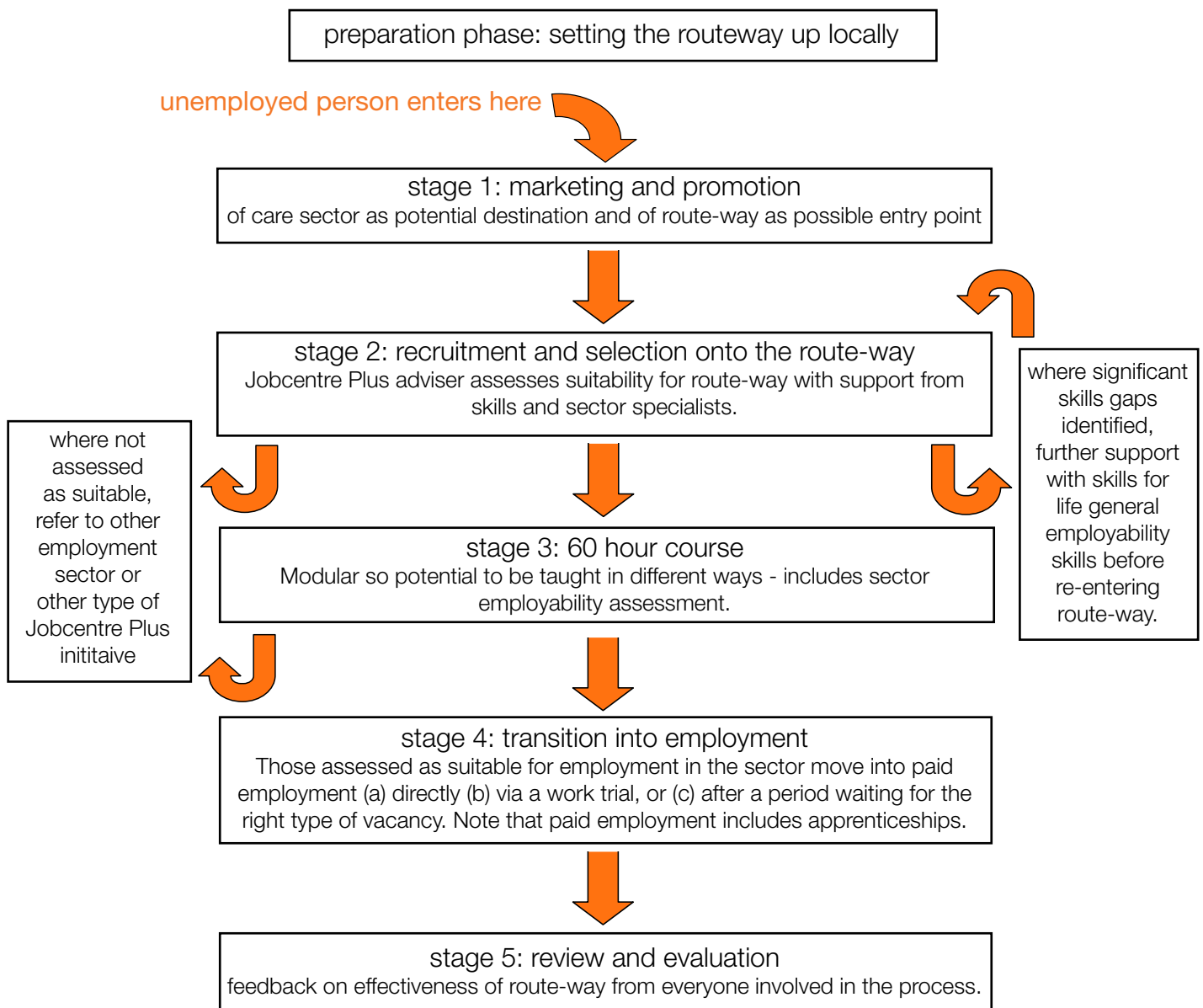
**sector route-way for adult social care**

**guidance for partners**



## what is the sector route-way for adult social care?

- The sector route-way is a form of support that Jobcentre Plus can offer to unemployed people to give them the skills and confidence to move into entry level jobs in the adult social care sector.
- A key part of the route-way is a 60 hour full time training course that gives learners a good idea of what it would be like to work in adult social care, and at the same time helps them to develop the skills they need to get started.
- Throughout the 60 hour course, learners will develop their communication and employability skills, and learn about the values and principles that are central to all types of work in the social care sector. They will also learn about the different types of job opportunities and career development options that are available, hopefully getting a real feel for the social care sector by the time they complete the course.
- The learning outcomes of the course are linked directly to the Common Induction Standards and work is already underway to present the route-way course as Foundation Learning units within the Qualification and Credit Framework.
- The diagram below gives an overview of the five stages of the route-way:



## what is the three-way partnership and why is it so important?

- The sector route-way for social care will only work if it is delivered by an effective district or regional partnership.
- As you will see from the diagram on the last page of this leaflet, every Jobcentre Plus customer that enters the route-way can expect to have a named contact from each of the three partners:
  - Jobcentre Plus (this could vary according to local arrangements but could be a personal advisor, account manager, care sector champion etc.)
  - The care sector (including social care employers, care ambassadors, care partnerships etc.)
  - Skills providers (including independent training providers, FE colleges, assessors, Skills for Life specialists etc.)
- Jobcentre Plus will be responsible for setting up these local partnerships and making sure that all the practical arrangements are in place.
- The care sector specialist will provide sector expertise to the potential recruit and to the other two partners. Sector specialists could be drawn from various sources and we expect arrangements to vary from one region to another according to local resources. Sector specialists can help Jobcentre Plus with recruitment by promoting the sector at recruitment events and by supporting personal advisers when they are checking the suitability of potential recruits. They can also help the skills development specialist by arranging guest speakers for the course and supporting in-course assessment.
- The skills development and assessment specialist is likely to be one of the route-way course tutors, but arrangements may again vary due to local resources. The skills specialist will focus on the development needs of the Jobcentre Plus customer, making sure that they have a Skills for Life assessment before starting the course and that they do not begin unless that are able to manage and benefit from level 1 learning. This partner will also be responsible for advising on next steps for the Jobcentre Plus customer after the end of course assessment.

**Named recruitment specialist from Jobcentre Plus**

potential recruit

**Named care sector specialist**

**Named skills provider**

## how will the care sector route-way help social care employers recruit and retain skilled staff?

- By promoting the care sector as a positive career choice to unemployed Jobcentre Plus customers.
- By identifying suitable applicants for care sector vacancies and helping them to become 'job-ready'.
- By providing easier access to employer support initiatives such as recruitment subsidies and apprenticeship programmes.
- By providing sector-specific pre-employment training at no cost to the employer.
- By delivering training that is directly linked to the Common Induction Standards and designed to help with the induction process.
- By delivering training that will be presented for accreditation on the Qualification and Credit Framework.
- By developing productive working partnerships between a range of different organisations at local level.

Skills for Care  
Albion Court  
5 Albion Place  
Leeds  
LS1 6JL

telephone 0113 245 1716  
fax 0113 243 6417  
email [info@skillsforcare.org.uk](mailto:info@skillsforcare.org.uk)  
web [www.skillsforcare.org.uk](http://www.skillsforcare.org.uk)