

16-19 Overview

Somerset

Theme 1:

Understanding the learning landscape

A high level overview of programmes being delivered for 16-19 residents, travel to learn patterns and provision accessed by learners with Learning Difficulties and/or Disabilities (LDD).

May 2011

Released (Version 2)

Note:

This document has been prepared by the Young People's Learning Agency as one of three individual 16-19 overviews, covering the following themes:

- Understanding the learning landscape (April 2011)
- Attainment and progression (May 2011)
- Participation of young people (June 2011)

These overviews are provided as part of a suite of data and information to the post 16 sector including local authorities, Academies, schools, colleges and other providers of education and training as well as wider partners working to meet the needs of all young people.

 For information

Key Messages for Somerset

- Resident learner numbers have increased overall; 16-19 Apprenticeship starts are above the statistical neighbour average; the number of further education [FE] learning aims, although the largest in the South West, have decreased over the last three years; while school sixth form [SSF] learning aims have increased.
- Excluding Preparation for Life & Work, Science & Mathematics has consistently been the most popular subject area, accounting for 15% of 2009/10 learning aims.
- Within FE, Agriculture, Horticulture & Animal Care learning aims have more than doubled between 2007/08 and 2009/10, whilst Information & Communication Technology learning aims have decreased by over 40%.
- Somerset's travel to learn patterns are dominated by FE colleges. Somerset is a steady net importer of learners to FE colleges and a net exporter of learners to SSFs.
- 65 Somerset residents with learning difficulties and/or disabilities were at independent specialist providers at the start of 2010/11; between 2005/06 and 2009/10 the number increased from 29 to 74.
- Somerset is noteworthy for its larger proportion of learners with statements of special educational need than with School Action Plus.

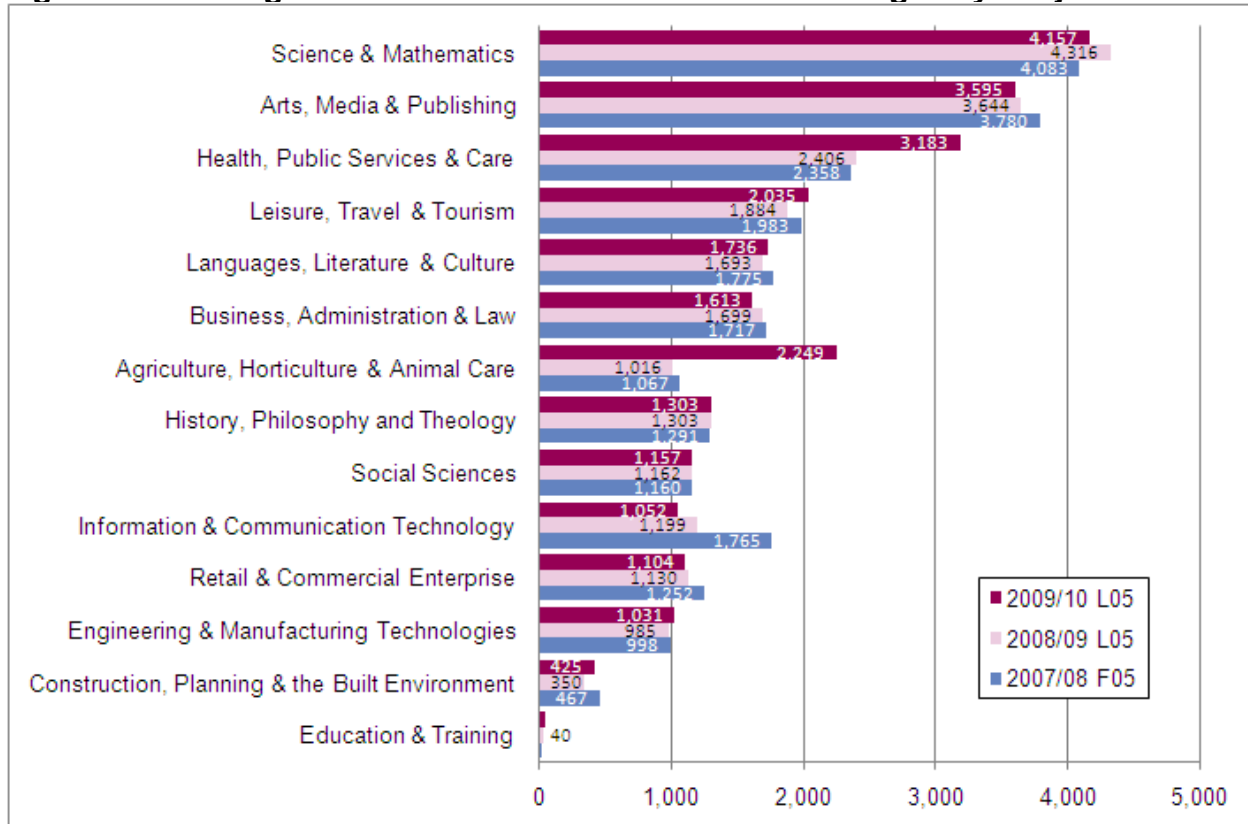
What programmes are being delivered for 16-19 residents?

1. Overall, 16-19 resident learner numbers have increased within Somerset. The 2009/10 full year figures show there are:
 - 9,950 in FE and sixth form colleges;
 - 2,191 in SSFs and Academies [resident learners in maintained schools with sixth forms have increased by over 14% between 2007/08 and 2009/10, the second largest increase within the South West];
 - 1,322 who started an Apprenticeship [16-19 Apprenticeship starts in 2010/11, totalling 775, are above the statistical neighbour average of 569];
 - 259 learners undertaking Entry to Employment provision [E2E];
 - 21 undertaking a combination of FE and E2E provision; and
 - in addition, initial 2010/11 data shows 70 resident learners undertaking Foundation Learning [FL], the second largest number within the South West, and 772 resident learners undertaking a combination of FE and FL - the largest number within the South West.
2. Although Somerset has the largest number of FE learning aims within the South West, this has decreased by more than 3% over the last three years to 35,071 in 2009/10. This is larger than the 1% South West regional decrease.
 - The split of FE participation by level within Somerset is 33% at entry or Level 1, 22% at Level 2 and 45% at Level 3 or higher. The national average split is 20% entry or Level 1, 24% at Level 2 and 50% at Level 3.
 - Somerset has seen large fluctuations in learning aims: Level 1 aims have increased by over 70% between 2007/08 and 2009/10 [the largest increase within the South West]; Level 2 aims have decreased by over 28% [the second largest decrease within the South West]; and Level 3 aims have decreased by nearly 14% [the largest decrease within the South West].
 - Preparation for Life & Work¹ accounts for nearly 30% of FE learning aims.
 - Agriculture, Horticulture & Animal Care learning aims have more than doubled between 2007/08 and 2009/10; Health, Public Services & Care learning aims

¹ Excluded from Figure 1 to illustrate numbers across the other subjects

have increased by over a third over the same period; whilst Information & Communication technology learning aims have decreased by over 40% over these three years.

Figure 1: Learning aims studied in FE and sixth form colleges by subject²



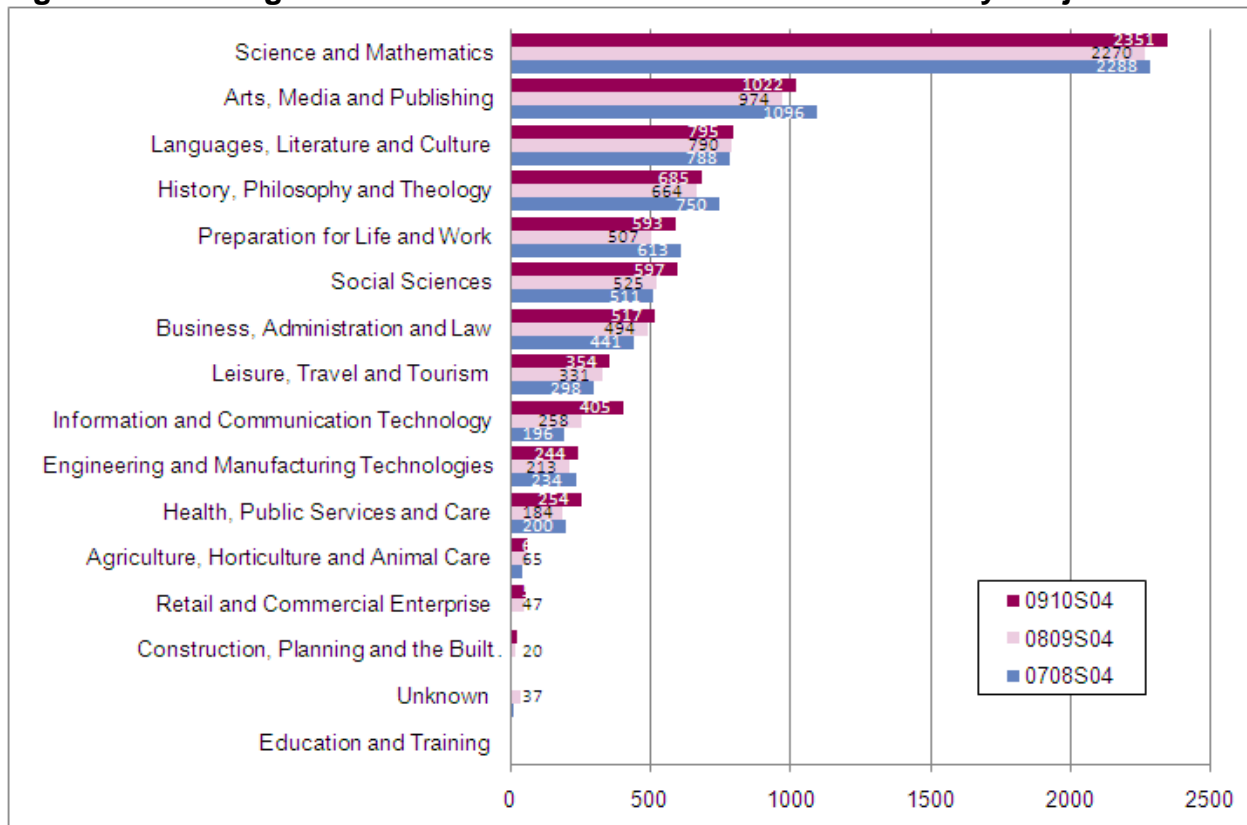
Source: ILR [Note Enrolments not learner numbers, a young person can enrol on a number of learning aims]

3. There has been a 6.5% increase in learning aims undertaken in SSFs and Academies over the last three years compared to a South West regional average increase of 10%.

- Although not exceptional, over 80% [6,391] of the 7,959 learning aims studied by residents in SSFs and Academies in 2009/10 are in A or AS levels and over 90% [7,184] of the learning aims studied are at Level 3 or equivalent. Initial figures for 2010/11 show a similar picture.
- Science & Mathematics has consistently been the most popular subject area, accounting for nearly 30% of 2009/10 learning aims.
- SSF and Academy learning aims in Information & Communication technology have more than doubled between 2007/08 and 2009/10; Agriculture, Horticulture & Animal Care learning aims have increased by nearly 50%; and Health, Public Services & Care learning aims have increased by over a quarter over the same period.

² Excludes E2E provision

Figure 2: Learning aims studied in sixth forms and Academies by subject³



Source: School Summer Census (Note learning aims not learner numbers; a young person can study a number of learning aims)

4. The most popular Apprenticeship frameworks undertaken by 16-19 residents in 2009/10 and 2010/11 (year to date – period 3) are shown below in Figure 3.

Figure 3: Top 10 Apprenticeship Frameworks by sector [16-19 Starts]

Framework	2009/10 Full Year	Framework	2010/11 (Period 3) Year to Date
Hairdressing	128	Hairdressing	129
Vehicle Maintenance & Repair	123	Construction	89
Construction	115	Engineering	71
Engineering	112	Vehicle Maintenance & Repair	67
Business Administration	108	Business Administration	59
Child Care Learning & Develop	102	Child Care Learning & Develop	58
Hospitality & Catering	88	MES Plumbing	45
Health & Social Care	69	Hospitality & Catering	32
MES Plumbing	61	Electrotechnical	28
Retail	60	Health & Social Care	25

Source: Apprenticeships Quarterly MI report, Quarter 1 2010/11, National Apprenticeship Service

Are there any notable travel to learn patterns?

5. Somerset’s travel to learn patterns are dominated by FE colleges and are characterised by relatively large flows to and from neighbouring areas. Overall, Somerset is a net importer of learners to FE colleges, with almost 500 more learners travelling in than travelling out.

³ Academies data correct as of 16/2/11

- Somerset’s most notable exports of learners to FE colleges are to City of Bath College, Norton Radstock College, Weston College and Wiltshire College [largely the Trowbridge site].
 - There is a no overall trend in the number of learners exported to non-Somerset FE colleges, although the number going to Weston College is increasing rapidly [+56%].
 - The number of imports to Somerset FE colleges is relatively large, and is static over time. The largest flows are of learners from North Somerset going to Bridgwater College, from Devon going to Richard Huish College and from Dorset going to Yeovil College.
 - Around seven learners in ten travelling into Somerset FE colleges do so for Level 3 courses. The equivalent proportion for those travelling to FE colleges out of Somerset is slightly smaller, at 65%. There is wide variation in this proportion between colleges, ranging from 100% at Richard Huish College to 55% at Yeovil College for the former category, and from 78% at Weston College to 30% at Norton Radstock College for the latter.
6. Somerset is a net exporter of learners to SSFs and almost all cross-border travel to SSFs is for Level 3 courses.
- At less than 100, the number of learners from outside Somerset travelling to the county’s SSFs is small, and static over time.
 - At around 350, there is no overall trend in the number of learners travelling out of Somerset to SSFs. In this category, the main flows are to The Gryphon School [Sherborne, Dorset] and to Writhlington School [Radstock, Bath & North East Somerset], both of which are noteworthy for their relatively fast rate of increase.
7. It is impossible to reach meaningful conclusions about travel to learn patterns for learners on Apprenticeships because of the complexities of residence, provider and employer locations.

Figure 4: Travel to Learn Patterns for FE & sixth form colleges and SSFs & Academies

FE & sixth form colleges	B&NES	Devon	Dorset	N Soms	other SW	other non-SW
Travelling in	62	437	289	321	62	39
Travelling out	244	69	37	162	56	40

SSFs & Academies	B&NES	Dorset	N Soms	Wilts	other SW	other non-SW
Travelling in	11	8	16	19	13	8
Travelling out	109	181	*	28	5	7

Source: ILR 2009/10 L05 and School Summer Census 2009/10 (highlights in/out flows for Somerset)
 Provision delivery location has been used for the FE and sixth form colleges table. The institution location has been used for the school sixth form and Academies table.

NOTE: Cells containing * have been suppressed as value is less than five.

What is the nature of provision accessed by learners with learning difficulties and/or disabilities (LDD)?

8. In 2009/10, 21% of 16-19 Somerset residents at FE or sixth form colleges self-declare as having LDD. This proportion has increased by one percentage point from 2007/08.

9. The number of learners aged 19-24 who are in receipt of Additional Learner Support [ALS] over £5,500⁴ in FE and sixth form colleges has risen from 48 in 2007/08 to 68 in 2009/10.
10. In 2009/10, 43% of all learning aims studied by 16-19 learners with LDD at FE or sixth form colleges are in Preparation for Life & Work, compared to just over a quarter for non-LDD learners. This is a smaller proportion than regionally [48%] or nationally [47%] and has increased by two percentage points from 2007/08. Almost seven in ten of all aims studied by 19-24 learners in receipt of more than £5,500 ALS are in Preparation for Life & Work.
11. A larger proportion of 16-19 LDD learners at FE or sixth form colleges study sub-Level 3 aims [69%] in 2009/10 than non-LDD learners [50%]. 90% of learning aims being studied by 19-24 year olds are below Level 2, compared to 86% nationally and 88% regionally.
12. In 2009/10, 3.2% of 16-19 year olds at SSFs or Academies have School Action, 0.3% have School Action Plus and 0.5% have a statement of special educational need [SEN]. Somerset is noteworthy for its larger proportion of learners with statements of SEN than with School Action Plus.
13. A larger proportion of Level 3 learning aims is studied by learners with no measure of SEN [92%] in 2009/10, than by those with School Action [89%], School Action Plus [88%] or statements of SEN [88%].
14. There are 65 Somerset residents at independent specialist providers [ISPs] at the start of 2010/11. Between 2005/06 and 2009/10 the number has increased from 29 to 74.
15. Eighty six per cent of Somerset's ISP learners attend South West providers, with 58% attending providers within the local authority boundary.

For further information please contact:
Regional Strategic Analysis Team (South West)
St Lawrence House
29-31 Broad Street
Bristol
BS1 2HF

T: 0117 372 6458
Pete.gisborne@ypla.gov.uk

Contact the National Apprenticeship Service (NAS) for information on the Apprenticeships Quarterly MI Reports. Please also refer to the [Statistical First Release](#).

⁴ The YPLA funds learners aged 19-24 who are in receipt of Additional Learner Support over £5,500.